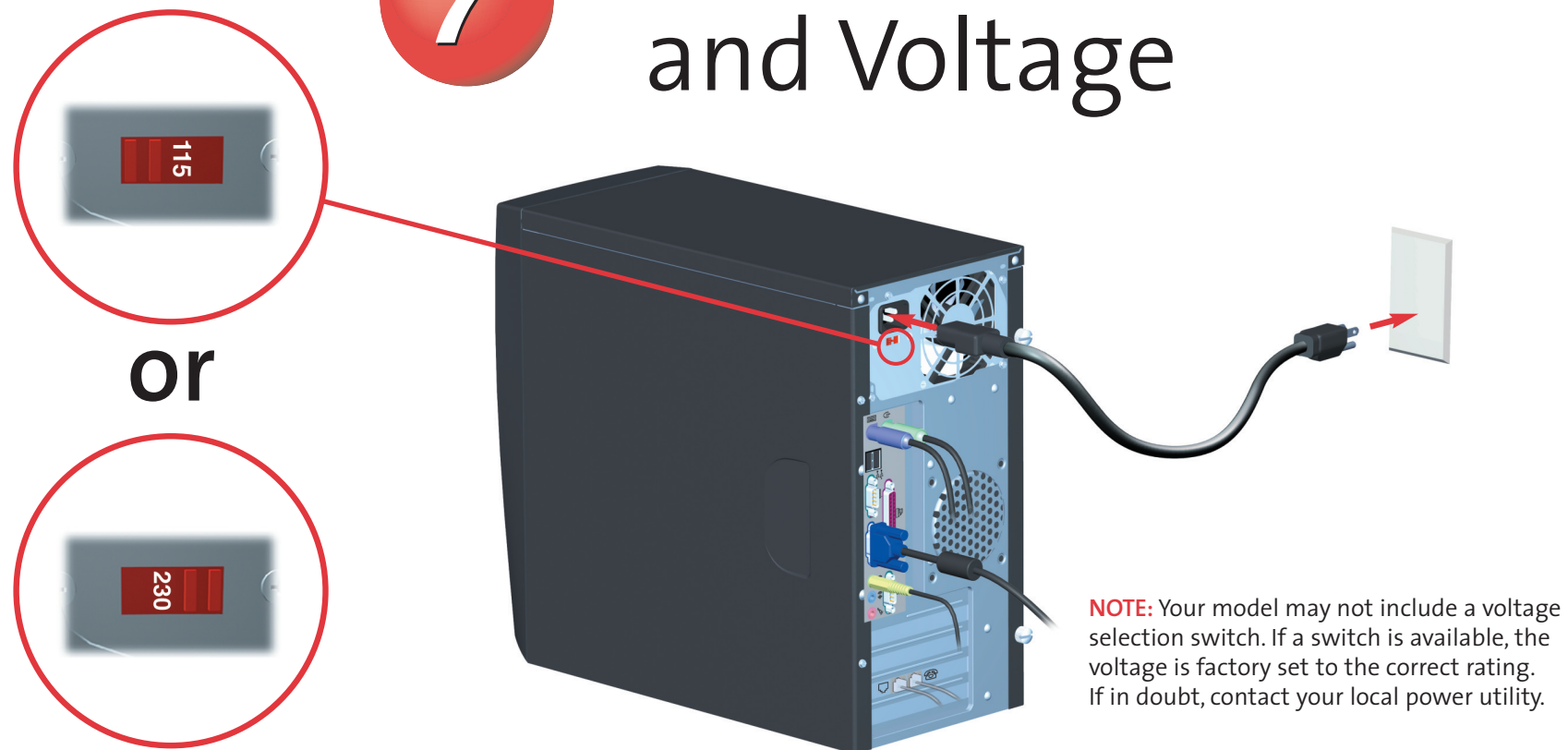


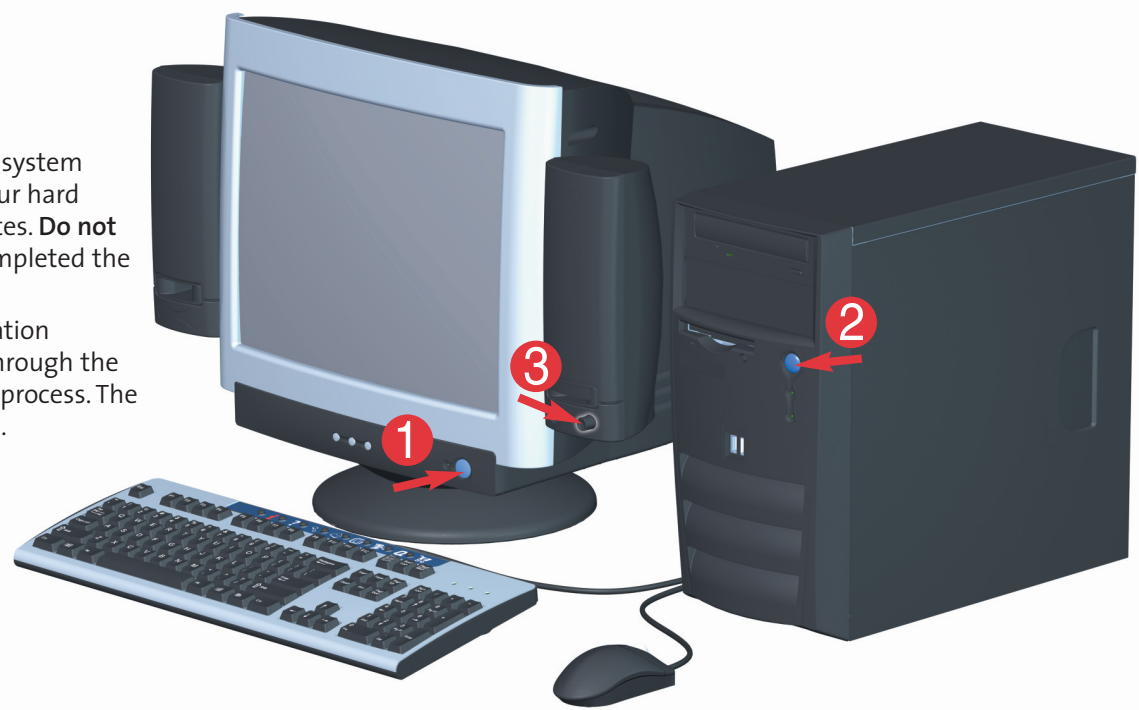
## 7 Power and Voltage



## 8 Start Up

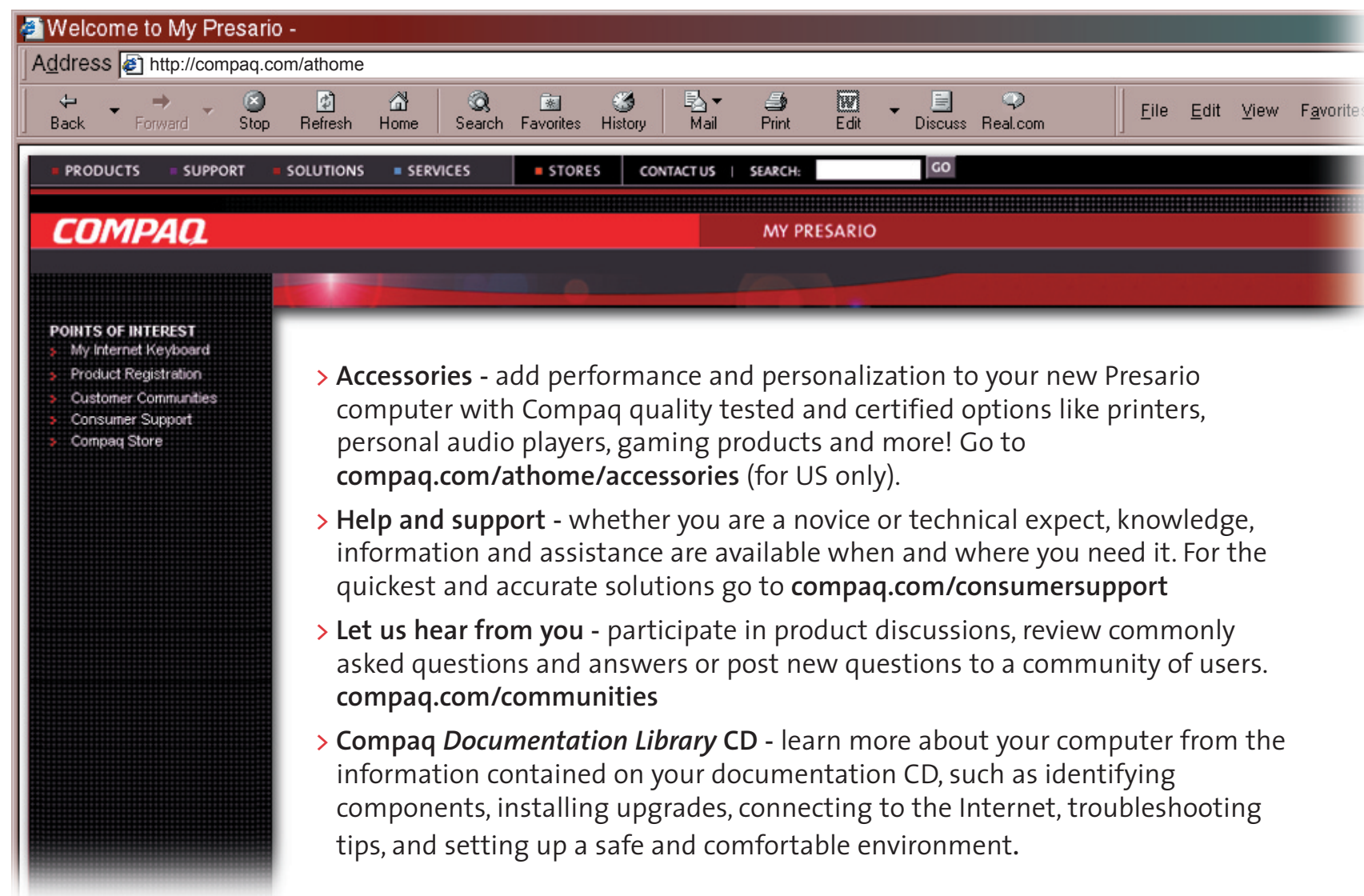
**IMPORTANT:** When the computer starts, the system automatically converts the file system on your hard drive. The conversion may take several minutes. **Do not stop the process.** When the conversion is completed the computer will restart.

When prompted, begin your product registration process. Online instructions will guide you through the registration and preinstalled software setup process. The setup time varies by computer configuration.



The rating label on the device shows which FCC class (A or B) the equipment falls into. Class B devices have an FCC logo or FCC ID on the label. Class A devices do not have an FCC ID or logo on the label. Once the class of the device is determined, refer to the corresponding statement. For complete details, read the *Safety and Regulatory Information* guide contained on the *Documentation Library* CD.

## Compaq features



[compaq.com/athome](http://compaq.com/athome)

©2002 Compaq Information Technologies Group, L.P. COMPAQ, Compaq, the Compaq logo and Presario are trademarks of Compaq Information Technologies Group, L.P. in the United States and other countries. All other product names mentioned herein may be trademarks of their respective companies. Nothing herein should be construed as constituting an additional warranty. Second Edition May 2002.



274893-002

Presario 4000 Series

## Quick Setup



**COMPAQ**

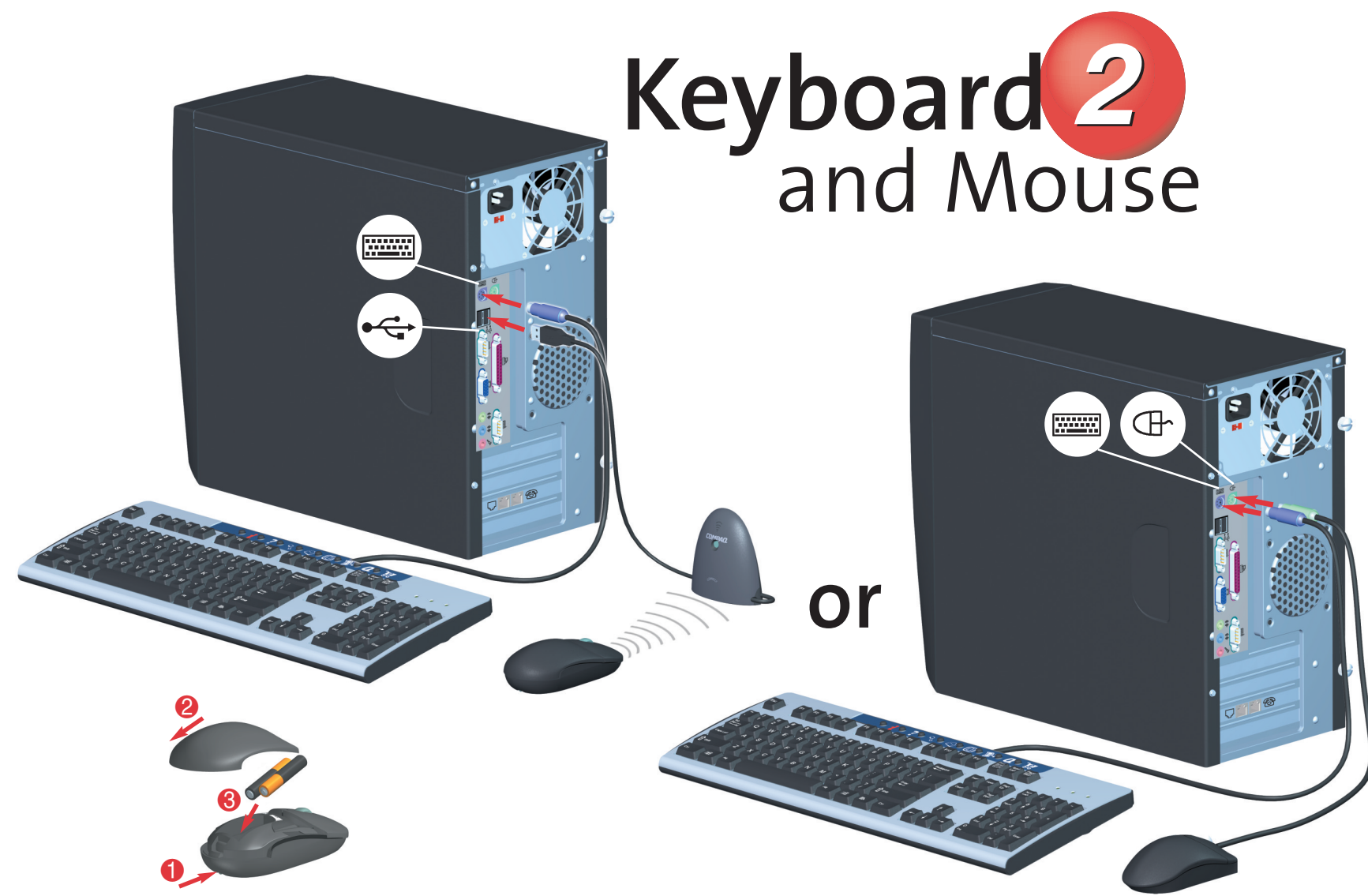


# 1 Unpacking and Contents

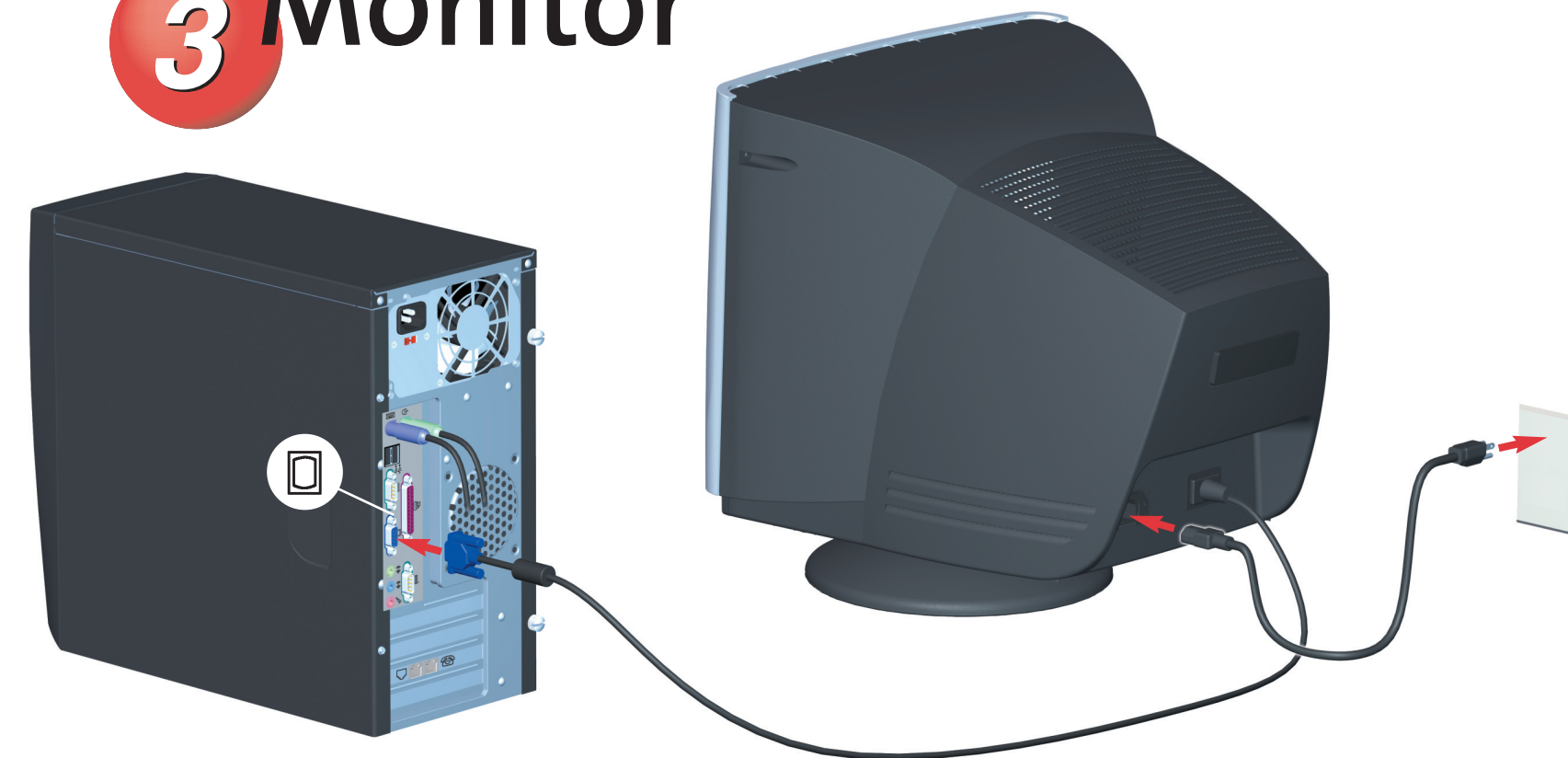


**NOTE:** Connectors may vary by model. Printers, network connectivity, and other accessories should be connected only after computer setup and registration are complete.

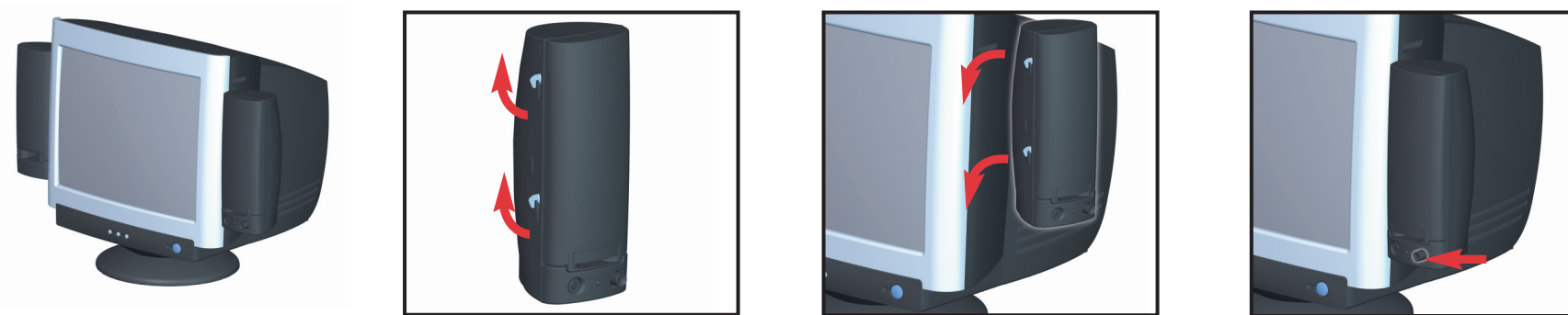
## 2 Keyboard and Mouse



## 3 Monitor

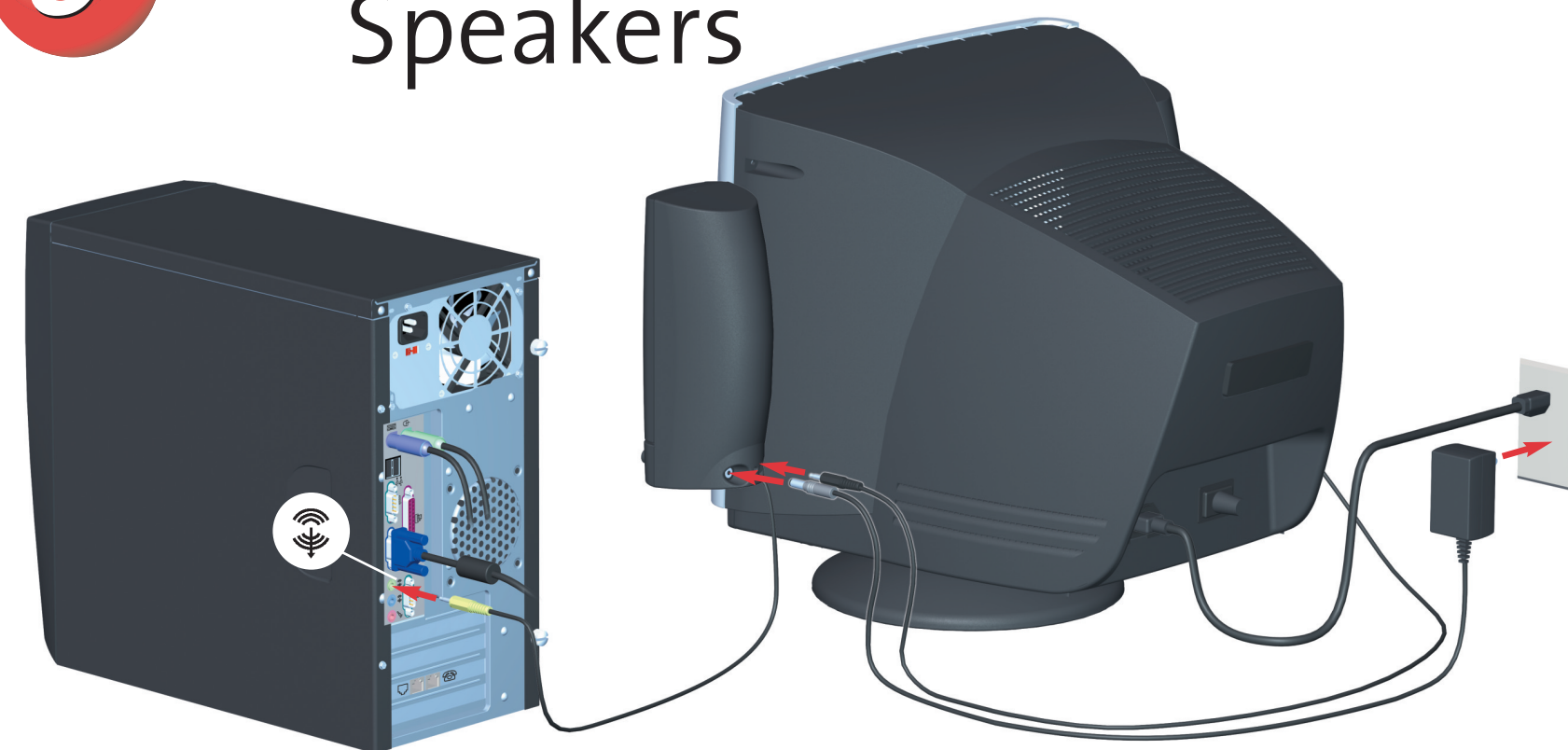


## 4 Attaching Speakers



**NOTE:** To install other types of speakers that were purchased with your computer, follow the instructions provided with the speakers. An AC adapter may be included with some speaker sets. Powered speakers (included in Compaq FS and MV series monitors) are required.

## 5 Connecting Speakers



## 6 Modem

