

Compaq Notebook Series

Getting Started

compaq.com

N1000/1500



271247-001



COMPAQ



Getting Started

Compaq Notebook Series

Document Part Number: 271247-001

June 2002

This guide explains how to set up your hardware and software, begin using the notebook, troubleshoot problems, and contact Compaq if you need assistance. The last chapter introduces you to the exterior features of the notebook.

© 2002 Compaq Information Technologies Group, L.P.

Compaq, the Compaq logo, Evo, and Presario are trademarks of Compaq Information Technologies Group, L.P. in the U.S. and/or other countries. Microsoft and Windows are trademarks of Microsoft Corporation in the U.S. and/or other countries. All other product names mentioned herein may be trademarks of their respective companies.

Compaq shall not be liable for technical or editorial errors or omissions contained herein. The information is provided "as is" without warranty of any kind and is subject to change without notice. The warranties for Compaq products are set forth in the express limited warranty statements accompanying such products. Nothing herein should be construed as constituting an additional warranty.

Getting Started

First Edition June 2002

Reference Number: N1000/1500

Document Part Number: 271247-001

Using This Guide

This preface explains how to interpret the symbols, text styles, and paths in your notebook documentation.

Warnings, Cautions and Notes

Warnings and cautions contain important information that can protect you, your work, and your system.

Notes contain additional information about a topic. Some notes provide basic information for inexperienced users. Others provide technical information for advanced users.

The following icons identify warnings, cautions, and notes.



WARNING: The information in a warning protects against bodily harm or loss of life.



CAUTION: The information in a caution protects against damage to your work, your notebook, or an optional external device.



The information in a note provides supplementary information for inexperienced or advanced users.

Text Styles

Some text in your notebook documentation is styled typographically to help you interpret the information it contains. For example, keyboard keys are styled like this: **shift** key. Buttons that display on the screen are styled like this: Next button.

The following table identifies and explains the text styles used in your notebook documentation.

| Style | Explanation |
|-------------------------|---|
| keys | <p>Identifies a key, such as the enter key, on the notebook keyboard or on an optional external keyboard.</p> <p>A plus sign (+) between 2 or more keys indicates that they are a key combination. To use most key combinations:</p> <ul style="list-style-type: none">■ Briefly press the first key, then briefly press each succeeding key.or■ Press and hold the first key, press and hold each succeeding key, then release all the keys simultaneously. <p>Unless you are instructed to do so, do not press the keys in a key combination simultaneously.</p> |
| commands | <p>Identifies characters you are asked to type. For example, to visit the Compaq Web site, you would type <code>http://www.compaq.com</code> into the address field on your Web browser.</p> |
| Initial Capital Letters | <p>Identifies words that appear on the screen. For example, in a procedure for displaying an icon on the taskbar, you might be asked to select a Show Icon On The Taskbar check box.</p> |

Paths

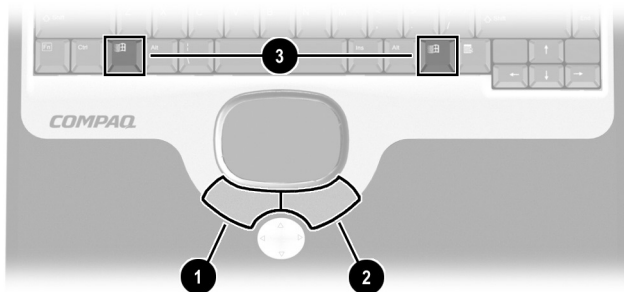
Following a Path

Many instructions in documentation direct you to locations within the operating system, an application, or a utility where you can select settings. The greater than symbol (>) is used to direct you from destination to destination along the path to the settings.

As you follow paths, do nothing at each destination along the way except select the next destination. The paths in your notebook documentation:

- Explain whether to look for an icon, a tab, or a button on the screen. Tabs are displayed along the top edge of individual windows.
- Are based on the notebook pointing device functions set at the factory:
 - To select, press the left TouchPad button ❶ once.
 - To double-click, press the left TouchPad button twice.
 - To right-click, press the right TouchPad button ❷ once.

Most paths to Windows destinations begin with “Start >.” To select Start (and display the Windows Start menu), select the Start button in the lower left corner of your screen or press either of the **Microsoft logo** keys ❸ on the keyboard.



Identifying TouchPad buttons and the Microsoft logo keys

Choosing a Path

Your notebook documentation provides paths for 3 operating systems.

- Follow the Windows 2000 Professional paths if:
 - ❑ The notebook is running Windows 2000 Professional.
 - or
 - ❑ The notebook is running Windows XP Home or Windows XP Professional in Classic view.
- Follow the Windows XP Home or Windows XP Professional paths if the notebook is running Windows XP Home or Windows XP Professional in Category view.

As installed, Windows XP Home and Windows XP Professional run in Category view. To compare Category view with Classic view or to select either view:

1. Right-click the Start button > Properties > Start Menu tab.
2. Select the Classic or Category radio button. (The views are displayed in the illustration on the Start Menu tab.)
3. Follow the instructions on the screen.

Contents

Using This Guide

1 Setting Up the Notebook

| | |
|---|-----|
| Setting Up the Hardware | 1-1 |
| Installing the Battery Pack | 1-2 |
| Connecting the Notebook to External Power | 1-3 |
| Opening the Notebook | 1-4 |
| Turning On the Notebook | 1-5 |
| Setting Up the Software | 1-6 |
| Turning Off the Notebook | 1-7 |
| Using the Notebook Safely | 1-8 |

2 Beginning to Use the Notebook

| | |
|---|-----|
| Selecting Regional Settings | 2-1 |
| Selecting Screen Settings | 2-1 |
| Protecting the Notebook Against Viruses | 2-2 |
| Installing Optional Software | 2-3 |
| Accessing Notebook Documentation | 2-5 |
| Opening the Documentation Library CD | 2-6 |
| Using the Documentation Library CD | 2-7 |
| Selecting a Guide | 2-7 |
| Finding a Topic Within a Guide | 2-8 |

3 Troubleshooting

| | |
|--|-----|
| Quick Solutions Checklist | 3-2 |
| Is the Notebook Receiving Power? | 3-2 |
| Is the Notebook Turned On? | 3-3 |
| Is the Notebook in Standby or Hibernation? | 3-3 |
| Is the Notebook Overheated? | 3-4 |
| Is the System Unresponsive? | 3-4 |
| Is an External Device Not Working? | 3-5 |
| Are You Using All Available Documentation? | 3-5 |
| Is Software Functioning Abnormally? | 3-6 |
| Contacting Compaq | 3-7 |
| Preparing to Call Technical Support | 3-7 |
| Taking the Notebook to a Service Provider | 3-8 |

4 Identifying External Hardware

| | |
|---|------|
| Display Components | 4-1 |
| Pointing Device Components | 4-2 |
| TouchPad Models | 4-2 |
| Dual Device Models | 4-3 |
| Top Components | 4-4 |
| Power Lights | 4-4 |
| Keyboard and Drive Lights | 4-5 |
| Power and Volume Controls | 4-6 |
| Easy Access Buttons and Keyboard Keys | 4-7 |
| Function and Keypad Keys | 4-8 |
| Front Panel Components | 4-9 |
| Rear Panel Components | 4-10 |
| Connectors | 4-10 |
| Vents and Jacks | 4-11 |
| Left Side Components | 4-12 |
| Right Side Components | 4-13 |

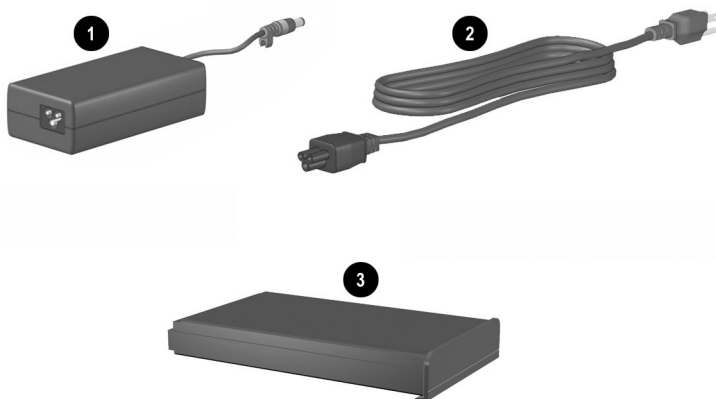
| | |
|--|------|
| Underside Components | 4–14 |
| Memory and Mini PCI Compartments | 4–14 |
| Docking Components | 4–15 |
| Labels. | 4–16 |
| Additional Standard Components | 4–17 |
| Documentation and Restore CDs | 4–17 |
| Cord and Cables. | 4–18 |
| Adapters and Accessories | 4–19 |

Index

Setting Up the Notebook

Setting Up the Hardware

To set up the notebook for the first time, you will need the notebook, the AC Adapter ❶, the power cord ❷, and the battery pack ❸. During the hardware setup, you will: install the battery pack, connect the computer to external power, open the display, and turn on the notebook.

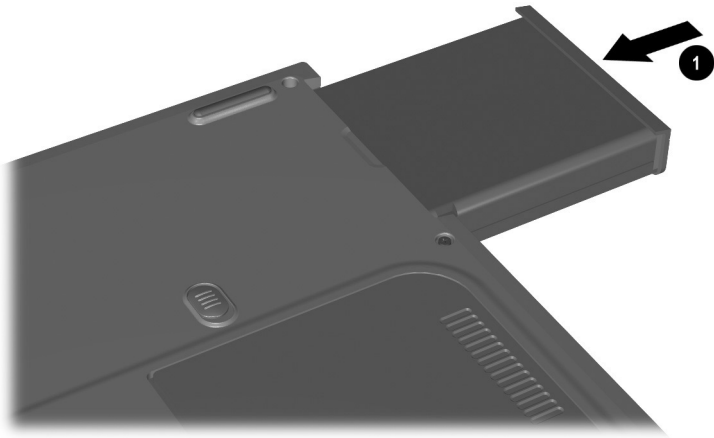


Identifying the AC Adapter, the power cord, and the battery pack (AC Adapters and power cords vary by region.)

Installing the Battery Pack

To install the battery pack:

1. Place the notebook upside down on a flat surface, preferably on top of a clean cloth.
2. Slide the battery pack **1** into the battery compartment until it clicks into place. The battery will install only one way.



Installing the battery pack

Connecting the Notebook to External Power



CAUTION: To prevent file corruption and to be sure that the correct drivers load, do not turn on the notebook for the first time while it is docked in an optional port replicator.

To connect the notebook to external power:

1. Place the notebook on a flat surface near an electrical outlet.
2. Plug the AC Adapter cable into the DC power connector ❶.
3. Plug the power cord into the AC Adapter ❷ and into an electrical outlet ❸.

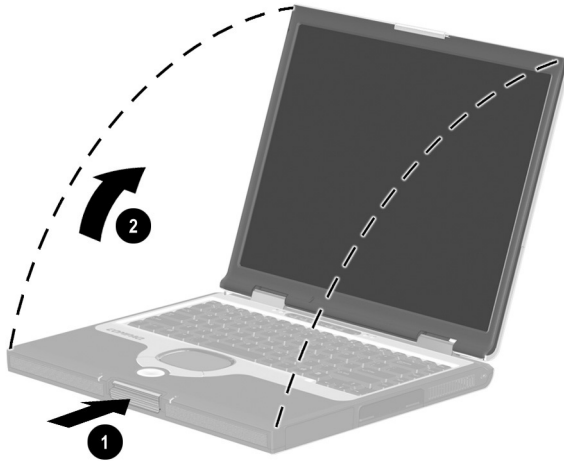
When the notebook receives AC power, the AC Adapter light ❹ turns on.



Connecting the notebook to external power (AC Adapters, power cords, and electrical outlets vary by region.)

Opening the Notebook

To open the notebook, briefly press the display release latch **1** as you raise the display **2**.

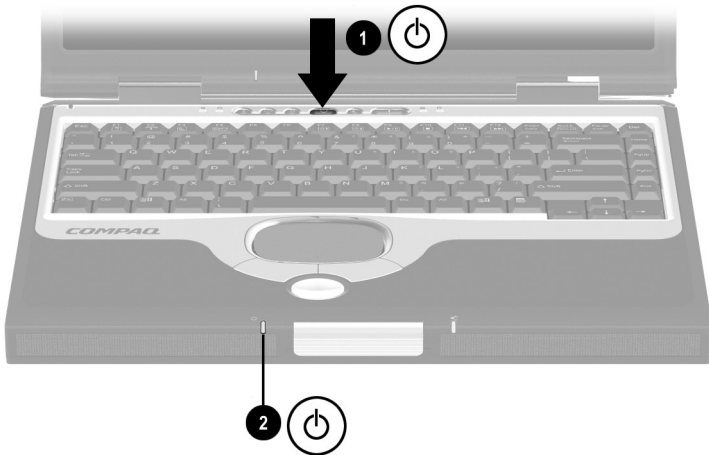


Opening the notebook

Turning On the Notebook

To turn on the notebook, briefly press the power button **1**. When the notebook is on, the power/standby light **2** turns on, and you are prompted to begin software setup.

If the notebook does not turn on, refer in this guide to Chapter 3.



Turning on the notebook

Setting Up the Software

A prompt to set up the software is displayed on the screen when the notebook is turned on for the first time.

Before responding to the prompt and proceeding through the online instructions, read the following caution and other installation information.



CAUTION: To prevent file corruption and be sure that the correct device drivers install, during software setup:

- Do not unplug the notebook from the electrical outlet.
 - Do not shut down the notebook.
 - Do not remove or insert a drive.
-
- Once you begin the software setup, you must complete the entire process without interruption. Setup time varies.
 - If you are prompted to select a language, choose carefully. The languages that you do not choose are deleted from the system and cannot be restored during the installation.
 - When you are prompted to accept the End User License Agreement, you must choose Accept to continue the software setup.

Turning Off the Notebook

Whenever possible, shut down the notebook by following the Windows shut down procedure provided below for your operating system. For information about using these procedures, see the section to “Paths” in the introduction “Using This Guide.”

To shut down the notebook using a Windows shutdown procedure:

■ **In Windows 2000 Professional:**

1. Select Start > Shut Down.
2. Select and hold the down arrow beside the What Do You Want the Computer To Do drop-down list until Shut Down is displayed.
3. Select the OK button.

■ **In Windows XP Home or Windows XP Professional,** select Start > Turn Off Computer button > Turn Off button.

If the notebook does not respond to a Windows shutdown procedure, see Chapter 3, “Troubleshooting,” in this guide, in the section “Is the System Unresponsive?”

Using the Notebook Safely

To protect the notebook from the power surges that may be caused by an uncertain power supply or an electrical storm:

- Plug the notebook power cord into an optional, high-quality surge protector.
- Provide surge protection on the cable that connects the modem to the telephone line.
- During an electrical storm, run the notebook on battery power or shut down the notebook and disconnect the power cord.

Surge protectors are available from most computer or electronics retailers.

To learn more about protecting yourself, your work, and your notebook from electrical and other risks:

- Read the following warning.
- Read the ergonomic and safety information included with the notebook.



WARNING: This is a Class B digital device, pursuant to Part 15 of the FCC Rules. For more Class B information, refer on the *Documentation Library* CD to *Regulatory and Safety Notices*. To reduce the risk of personal injury, electric shock, fire, or damage to the equipment:

- Do not disable the power cord grounding plug. It is an important safety feature.
 - Plug the equipment into a grounded (earthed) electrical outlet that is easily accessible at all times.
 - Disconnect power from the equipment by unplugging the power cord from the electrical outlet.
 - Do not place anything on power cords or cables. Arrange them so that no one may accidentally step on or trip over them.
 - Do not pull on a cord or cable. When unplugging a cord from an electrical outlet, grasp the cord by the plug.
 - Disconnect the modem from a telephone line when you are not using it, and do not use the modem during an electrical storm.
-

Beginning to Use the Notebook

Selecting Regional Settings

Keyboard language and other regional preferences, such as time, date, and currency format, are set in the operating system.

To access regional settings:

- **In Windows 2000 Professional**, select Start > Settings > Control Panel > Regional Options.
- **In Windows XP Home or Windows XP Professional**, select Start > Control Panel > Date, Time, Language and Regional Options.

For information about selecting regional settings, open the Regional Options window, then use context-sensitive Help. To use context-sensitive Help, select the question mark button in the upper right corner of the window, then select an item. A definition, explanation, or procedure is displayed.

Selecting Screen Settings

If you would like to see more items on your screen or to see the items on your screen displayed larger, change the screen resolution setting in your operating system.

To access the screen resolution setting:

- **In Windows 2000 Professional**, select Start > Settings > Control Panel > Display > Settings tab.
- **In Windows XP Home or Windows XP Professional**, select Start > Control Panel > Appearance and Themes icon > Change The Screen Resolution task > Settings tab.

To change the screen resolution setting, which is called the *screen area* setting in Windows 2000 Professional:

1. Press and hold down the left TouchPad button as you move the slider on the Settings tab. The image on the monitor illustrated above the slide bar changes as you move the slide bar.
2. When the image on the illustrated monitor is the image you would like to use on the notebook, select the OK button, then follow the instructions on the screen.

For information about setting other screen preferences in the Display Properties window, use context-sensitive Help. To use context-sensitive Help, select the question mark button in the upper right corner of the window, then select an item. A definition, explanation, or procedure is displayed.

Protecting the Notebook Against Viruses

When you use the notebook for email, network, or Internet access, you expose the notebook to computer viruses. Computer viruses can disable the operating system, your applications, or your utilities or cause them to function abnormally.

Antivirus software can detect most viruses, destroy them, and, in most cases, repair any damage they have caused.

Compaq strongly recommends that you install optional antivirus software before using the modem or a network connection. Antivirus software is available from most computer or electronics retailers.

Installing Optional Software

Step-by-step instructions for installing and using many of the applications and utilities included with the notebook are provided on the *Documentation Library* CD included with the notebook. Instructions for using the CD are provided next in this guide.

If you prefer to install optional software now, without referring to the *Documentation Library* CD, the following information may be helpful:



CAUTION: To prevent file corruption, ensure that the correct drivers are installed and install software only when the notebook is connected to external power through the AC Adapter. (Do not install software while the notebook is docked in an optional port replicator or while the notebook is running on battery power.) During the installation:

- Do not unplug the notebook from external power.
 - Do not shut down the notebook.
 - Do not remove or insert a drive.
-
- To install an application or a utility from a CD, refer to the documentation included with the CD. In most cases, installation instructions are included in the CD package or are displayed on the screen when the CD is inserted.
 - To install a preloaded Compaq utility:
 - **In Windows XP Professional**, select Start > Setup Compaq Software icon, then follow the instructions on the screen.

❑ **In Windows 2000 Professional and Windows XP Home:**

- ◆ If the Setup Compaq Software icon is displayed on the Desktop, select the icon, then follow the instructions on the screen.
- ◆ If the Setup Up Compaq Software icon does not display on the Desktop, select Start > Run. Then:

- ❖ **In Windows 2000 Professional**, on the command line, type:

```
c:\cpqapps\setup.exe preload /s
```

The Setup Compaq Software icon is displayed on the Desktop. Select the icon, then follow the instructions on the screen.

- ❖ **In Windows XP Home**, on the command line, type:

```
c:\cpqapps\setup.exe preload programs /s
```

The Setup Compaq Software icon is displayed in the All Programs menu. Select Start > All Programs, then follow the instructions on the screen.

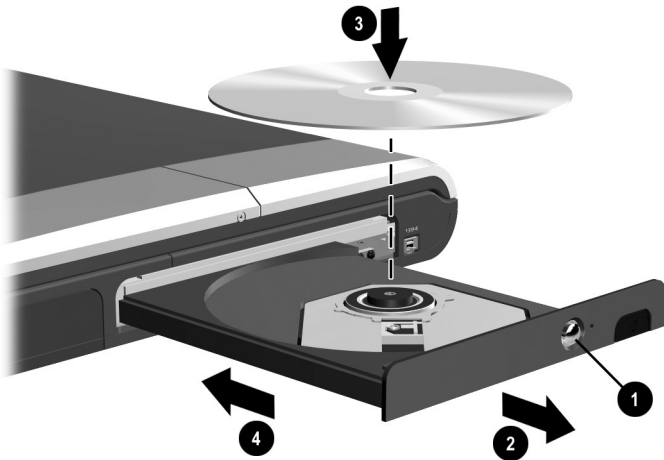
- To view the descriptions and space requirements of preloaded Compaq utilities without installing them, select the Setup Compaq Software icon, then select the Next button. After viewing the utility information, select the Cancel button.

Accessing Notebook Documentation

Information about using the notebook can be found on the *Documentation Library* CD supplied with the notebook.

To insert the *Documentation Library* CD:

1. Make sure that the notebook is on.
2. Press the media release button ❶ on the drive bezel to release the media tray, then pull the tray outward until it is fully extended ❷.
3. Holding the CD by the edges, position the CD in the tray with the label side up. If the tray is not fully extended, the CD may need to be tilted to be inserted.
4. Gently press the CD onto the spindle ❸ until it snaps into place.
5. Push the media tray back in until it closes with a click.



Inserting the Documentation Library CD into a CD drive

Opening the Documentation Library CD

Displaying the Documentation Library Menu

When the *Documentation Library* CD is inserted into a drive and if autorun is enabled on the notebook, the CD menu is displayed on the screen after a pause of up to several seconds.

If autorun is disabled and the menu is not displayed, you can display the menu manually:

1. Select Start > Run.
2. In the Open field, type:
explorer x:
(where X is your CD drive designation).
3. Select the file that includes an .exe extension, for example, Filename.exe.
4. Select the OK button.



A drive designation is a letter of the alphabet that the notebook uses to identify a drive. To display the drive designation of your CD drive, double-click the My Computer icon on the desktop.

Responding to an Acrobat Reader Prompt

Adobe Acrobat Reader is an application that displays the notebook documentation on the screen.

If messages about Acrobat Reader are displayed on the screen as you open the *Documentation Library* CD:

- Choose to install Acrobat Reader.
- Choose to accept the Acrobat Reader license agreement.

Using the Documentation Library CD

This section describes how to select a guide and find a specific topic within a guide.

For information about using documentation symbols, text styles, and paths, see the introduction in this guide, “Using This Guide.”

Selecting a Guide

Information about the notebook is provided in the 7 guides described in the following table.

| For Information About These Topics | Select This Guide |
|---|-----------------------------|
| <ul style="list-style-type: none">■ Using the external hardware features identified in Chapter 4 of this guide.■ Running the notebook on a battery pack.■ Upgrading memory.■ Power and environmental specifications. | <i>Hardware Guide</i> |
| <ul style="list-style-type: none">■ Playing, creating, or copying CDs or DVDs.■ Using Standby and Hibernation and selecting power preferences.■ Using security features, such as passwords, to protect against unauthorized access to the notebook.■ Updating or restoring Compaq software.■ Using the MultiBoot, Compaq Diagnostics, and Computer Setup utilities. | <i>Software Guide</i> |
| <ul style="list-style-type: none">■ Using the modem.■ Using a network connection. | <i>Modem and Networking</i> |

Continued

Selecting a Guide, *continued*

| For Information About These Topics | Select This Guide |
|---|---|
| <ul style="list-style-type: none">■ Using modem AT commands.■ Accessing the command sets for your notebook. | <i>Modem Command Guidelines (Advanced Users Only)</i> |
| <ul style="list-style-type: none">■ Caring for the notebook and drives.■ Preparing the notebook for transport.■ Traveling with the notebook (including air and international travel). | <i>Maintenance, Shipping and Travel</i> |
| <ul style="list-style-type: none">■ Solving notebook problems yourself.■ Getting help from Compaq. | <i>Troubleshooting</i> |
| <ul style="list-style-type: none">■ Governmental approvals and safety information.■ Protecting the notebook from static electricity. | <i>Regulatory and Safety Notices</i> |

Finding a Topic Within a Guide

To find specific information within a guide:

- Use the bookmarks or search features in Acrobat Reader.
 - ❑ Select any plus sign (+) in the left pane of the Acrobat Reader window to display subheadings.
 - ❑ Select Edit > Find or Edit > Search to search quickly for a topic. Select the Help button for additional information on Acrobat Reader search, navigation, or print topics.
- Use the Index in this guide.
 - ❑ Indexes list specific items under group headings, such as “light,” which may be helpful if you do not know the name of an item.
 - ❑ Index listings direct you to the first page of a topic. You may find more information about the topic by scrolling through a few of the pages that follow.

Troubleshooting

To solve a problem:

1. Refer to the “Quick Solutions Checklist,” next in this chapter.
2. Refer to the *Troubleshooting* guide on the *Documentation Library* CD.
3. If the problem persists, refer to the last section in this chapter, “Contacting Compaq.”

Quick Solutions Checklist

Is the Notebook Receiving Power?

If the AC Adapter light is off and the notebook cannot be turned on, adequate power may not be available to the notebook.

- If the notebook is running on battery power or is connected to an external power source other than an electrical outlet, connect the notebook to an electrical outlet using the AC Adapter.
- Make sure the power cord and AC Adapter cable connections are secure.
- Verify that the electrical outlet is providing adequate power by plugging another electrical device into the outlet.

When the AC Adapter light turns on, the notebook is receiving adequate power.



If the notebook turns on when connected to external power but not when running on battery power, recharge the battery pack. For more information about running the notebook on battery power, see the *Hardware Guide*, “Battery Packs” section, on the *Documentation Library CD*.



Identifying the AC Adapter light

Is the Notebook Turned On?

If the power/standby **1** light is off, the notebook may not be turned on. To turn on the notebook, briefly press the power button **2**. If the power/standby light is on, the notebook is turned on.



Identifying the power/standby light and the power button

Is the Notebook in Standby or Hibernation?

Standby and Hibernation are energy-saving features that may initiate while the notebook is turned on but not in use.

- When Hibernation is initiated, the power/standby light **1** turns off and the notebook saves your work to the hard drive, then shuts down. To exit Hibernation, briefly press the power button **2**.
- When Standby is initiated, the power/standby light **1** blinks and the notebook saves your work in random access memory (RAM), then clears the screen. To exit Standby, briefly press the power button **2**.

For more information about Standby and Hibernation, see the *Software Guide*, “Power” section, on the *Documentation Library* CD.

Is the Notebook Overheated?

It is normal for the notebook to feel warm to the touch while it is in use. But if the notebook feels *extremely* warm, it may be overheating because a vent is blocked. Overheating can cause the notebook to become unresponsive. Vents are on the rear panel and left side of the notebook.

If you suspect that overheating could be causing the problem, allow the notebook to cool to room temperature. Then:

- Use the notebook on a hard surface, not on a soft surface. A rug, pillow, or thick clothing could block the underside vent.
- Be sure that the rear panel and left side vents are not blocked by hard surfaces, such as an adjoining optional printer, or by fabrics such as bedding or thick or loose clothing.

Is the System Unresponsive?

If the system has stopped responding and you are unable to use normal Windows shut down procedures:

1. Press **ctrl+alt+delete**. Then:
 - ❑ **In Windows 2000 Professional**, select the Shut Down button, press the down arrow beside the What Do You Want The Computer To Do field until Restart or Shut Down is displayed, then select the OK button.
 - ❑ **In Windows XP Home or Windows XP Professional**, select the Turn Off Computer button, then select the Turn Off button.
2. If you are unable to shut down the notebook with **ctrl+alt+delete**, press and hold the power button for 4 seconds.
3. If you are unable to turn off the notebook with the power button, disconnect the notebook from external power and remove the battery pack.

Is an External Device Not Working?

If an external device does not function as expected:

- Turn on the device as instructed in the device documentation. Some devices, such as external monitors, printers, and devices connected to the parallel connector, must be turned on before the notebook is turned on.
- Verify that:
 - ❑ All device connections are secure.
 - ❑ The device is receiving electrical power.
 - ❑ The correct device drivers are installed.
- Install the latest available system ROM. For instructions, see the *Software Guide*, “Software Updates and Restorations” section, on the *Documentation Library* CD.

Are You Using All Available Documentation?

To access the current procedures for using the hardware and software on your notebook:

- See Chapter 2, “Beginning to Use the Notebook,” in this guide for information about using the *Documentation Library* CD. The CD provides information about Compaq hardware and software and about connecting or installing optional devices or software.
- See Windows Help for information about the operating system. To access Windows Help, select Start > Help. For more information, which is available in limited languages, visit the Microsoft Web site at:
<http://www.microsoft.com>
- Refer to Help within most applications and utilities for information about using a specific application or utility. To access Help, open the software, then select the Help option. The Help option is often a button or menu item that is labeled “Help” or identified with a question mark icon.

Is Software Functioning Abnormally?

If your software becomes unresponsive or seems abnormal:

- Restart the notebook.
- Run a virus scan.

When you use the notebook for email, network, or Internet access, you expose the notebook to computer viruses. Computer viruses can disable the operating system, your applications, or your utilities or cause them to function abnormally.

Antivirus software can detect most viruses, destroy them, and, in most cases, repair any damage they have caused.

Optional antivirus software is available from most computer or electronics retailers. For information about running a virus scan, refer to the documentation included with the antivirus software.

- Reinstall the software.
 - To reinstall the operating system or a Compaq application or utility, follow the instructions with the Restore CDs included with the notebook. For more information about the Restore CDs, see the *Software Guide*, “Restoring Software” section, on the *Documentation Library CD*.
 - To reinstall software that was not preloaded or preinstalled, follow the instructions in the documentation included with the software.



CAUTION: To prevent file corruption and ensure that the correct drivers are installed, reinstall software only when the notebook is connected to external power through the AC Adapter. (Do not restore software while the notebook is docked in an optional port replicator or while the notebook is running on battery power.) During the reinstallation:

- Do not unplug the notebook from external power.
 - Do not shut down the notebook.
 - Do not remove or insert a drive.
-

Contacting Compaq

If the troubleshooting suggestions earlier in this chapter have not helped you solve the problem, you may need to contact Compaq.

- If the notebook is connected to the Internet, visit the Compaq Web site.
 - For home, home office, and small business support, type the following in your Web browser address field:
<http://www.compaq.com/consumersupport>
This area of the Compaq Web site is available in English worldwide. Other languages are offered in some regions.
 - For commercial business support in English only, visit:
<http://www.compaq.com/support>
- If the notebook is not connected to the Internet, refer to the *Worldwide Telephone Numbers* booklet, included with the notebook, to contact a support technician or a Compaq authorized dealer, reseller, or service provider.

Preparing to Call Technical Support

To provide the fastest possible resolution of your problem, have the following items available when you call:

- The notebook.
- Serial number and model description, which are provided on the serial number label on the underside of the notebook.
- Purchase date on the invoice.
- Conditions under which the problem occurred.
- Error messages that have been displayed.

- Operating system version number and registration number.
To display the operating system version number and registration number:
 - **In Windows 2000 Professional**, select Start > Settings > Control Panel > System > General tab.
 - **In Windows XP Home or Windows XP Professional**, select Start > Control Panel > Performance and Maintenance > System > General tab.
- Brand and model of an optional printer.
- Reports from any tests you have run in Compaq Diagnostics. For information about using Compaq Diagnostics to report configuration or diagnostic information, see the *Software Guide*, “Setup and Diagnostic Utilities” section, on the *Documentation Library CD*.

Taking the Notebook to a Service Provider

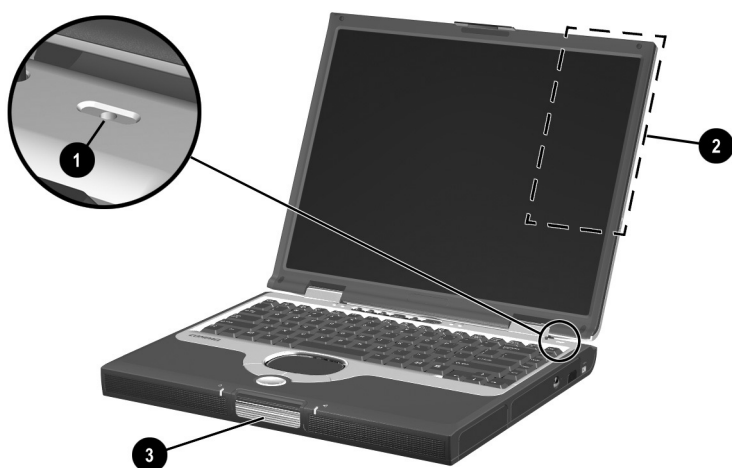
In addition to providing the items listed in the preceding section, “Preparing to Call Technical Support,” be sure to:

- Delete all passwords,
or
- Disclose all passwords to the service provider.

For information about using passwords, see the *Software Guide*, “Security” section, on the *Documentation Library CD*.

Identifying External Hardware

Display Components

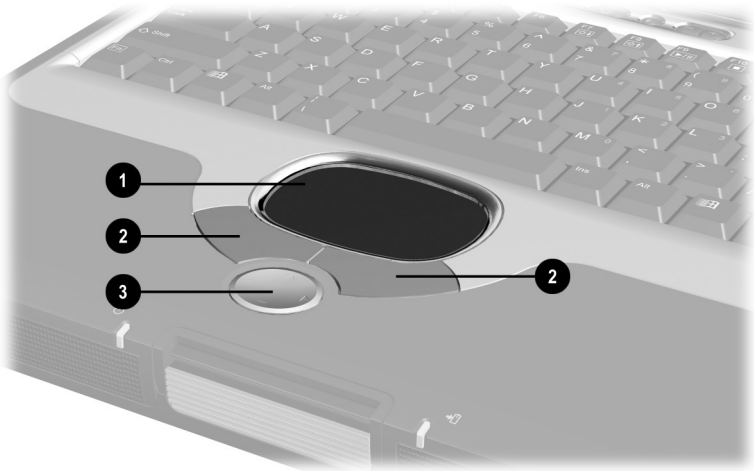


Display Components

| | | |
|---|-----------------------|---|
| ❶ | Microphone | Inputs single-channel sound. |
| ❷ | Optional MultiPort | Supports an optional USB-enabled wireless device such as a Bluetooth MultiPort, 802.11b Wireless LAN MultiPort, and future wireless technologies. |
| ❸ | Display release latch | Opens the notebook. |

Pointing Device Components

TouchPad Models

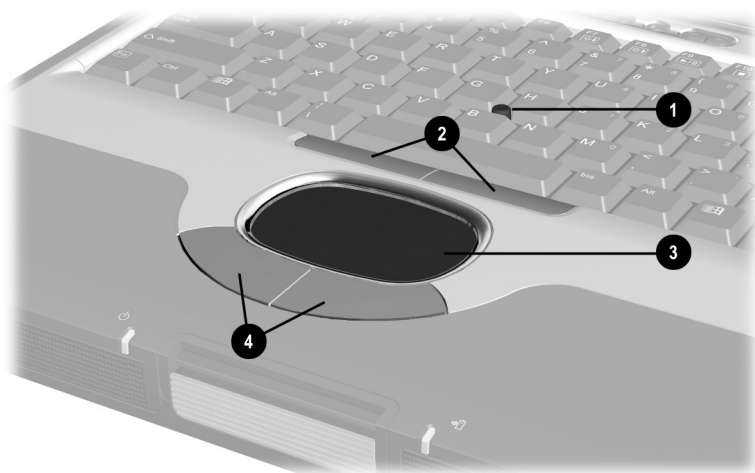


Pointing Device Components: TouchPad Models

| | | |
|---|---------------------------------|---|
| ❶ | TouchPad | Moves the cursor. Can be set to perform additional mouse functions such as scroll, select, and double-click.* |
| ❷ | Left and right TouchPad buttons | Function like the left and right buttons on an external mouse. |
| ❸ | Scroll button | Scrolls up, down, left, or right through most application and Internet browser windows. |

*For information about modifying pointing device functions, see the *Hardware Guide*, Chapter 2, “Pointing Devices and Keyboard,” in the section “Setting Pointing Device Preferences” on the *Documentation Library CD*.

Dual Device Models



Pointing Device Components: Dual Device Models

| | | |
|---|---------------------------------------|--|
| ❶ | Pointing stick | Moves the cursor and selects and activates items on the screen. |
| ❷ | Left and right pointing-stick buttons | Function like the left and right buttons on an external mouse. |
| ❸ | TouchPad | Moves the pointer. Can be set to perform additional mouse functions such as scroll, select, and double-click.* |
| ❹ | Left and right TouchPad buttons | Function like the left and right buttons on an external mouse. |

*For information about modifying pointing device functions, see the *Hardware Guide*, Chapter 2, “Pointing Devices and Keyboard,” in the section “Setting Pointing Device Preferences” on the *Documentation Library CD*.

Top Components

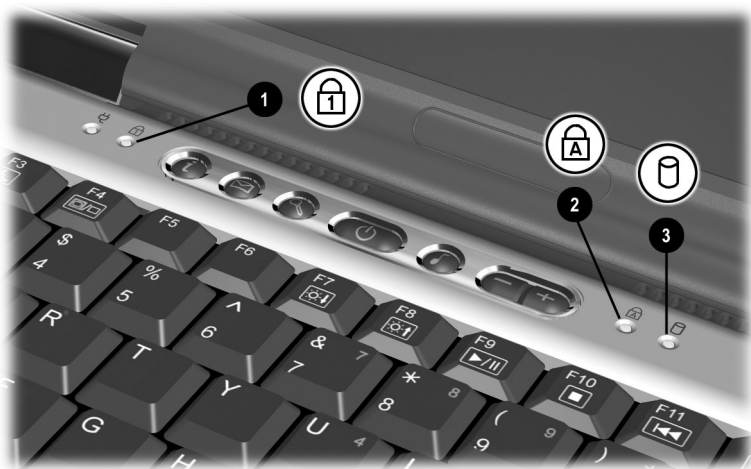
Power Lights



Top Components: Power Lights

| | | |
|---|---------------------|--|
| 1 | AC Adapter light | On: AC power is being supplied through the AC Adapter. |
| 2 | Power/standby light | On: Power is turned on. Blinking: Notebook is in Standby. |
| 3 | Battery light | On: A battery pack is charging. Blinking: A battery pack that is the only available power source has reached a low-battery condition. |

Keyboard and Drive Lights



Top Components: Keyboard and Drive Lights

| | | |
|---|--|---|
| ① | Num lock light | On: Num lock is on or the internal keypad is on.* |
| ② | Caps lock light | On: Caps lock is on. |
| ③ | IDE (Integrated Drive Electronics) drive light | On: The hard drive, CD, or DVD drive is being accessed. |

*For information about using num lock, the internal keypad, or an external keypad, see the *Hardware Guide*, Chapter 2, “Pointing Devices and Keyboard,” in the section “Keypads” on the *Documentation Library CD*.

Power and Volume Controls

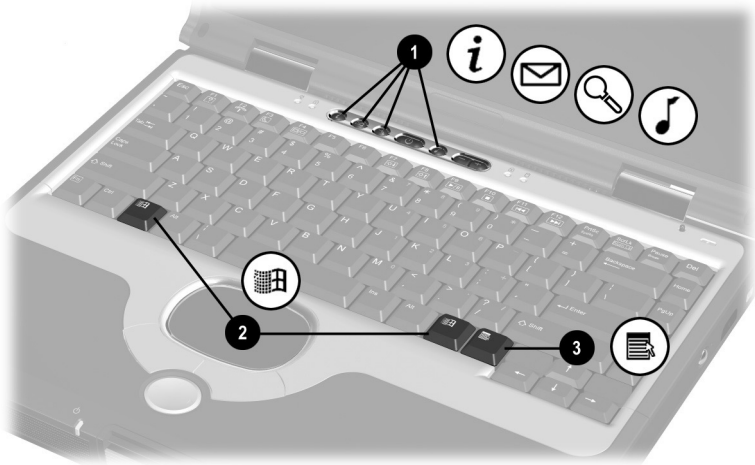


Top Components: Power and Volume Controls

- | | | |
|----------|--------------------|--|
| 1 | Power button* | When the notebook is: <ul style="list-style-type: none">■ Off, briefly press to turn on the notebook.■ On, briefly press to initiate Hibernation.■ In Standby, briefly press to exit Standby.■ In Hibernation, briefly press to exit Hibernation. If the system has stopped responding and Windows shutdown procedures cannot be used, press and hold for 4 seconds to turn off the notebook. |
| 2 | Volume buttons (2) | Adjust, mute, or restore system volume. To mute or restore volume, press both volume buttons at the same time. |
| 3 | Display switch* | Turns off the notebook display if the notebook is closed while it is on. |

*This table describes default settings. For information about changing the function of the power button, display switch, or **Fn+F3** hotkeys, see the *Software Guide*, "Power" chapter on the *Documentation Library CD*.

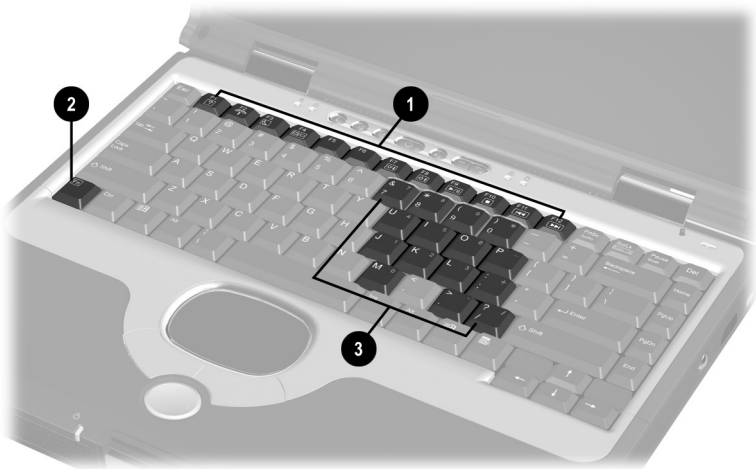
Easy Access Buttons and Keyboard Keys



Top Components: Easy Access Buttons and Keyboard Keys

- | | |
|----------------------------------|---|
| <p>❶ Easy Access Buttons (4)</p> | <p>Provide quick access to Internet or network destinations, or to software applications or data files on a drive. The icon on each button represents the default destination. Buttons can be programmed to different destinations.</p> |
| <p>❷ Microsoft logo keys (2)</p> | <p>Display Windows Start menu.</p> |
| <p>❸ Applications key</p> | <p>Displays shortcut menu for item beneath the pointer.</p> |
-

Function and Keypad Keys

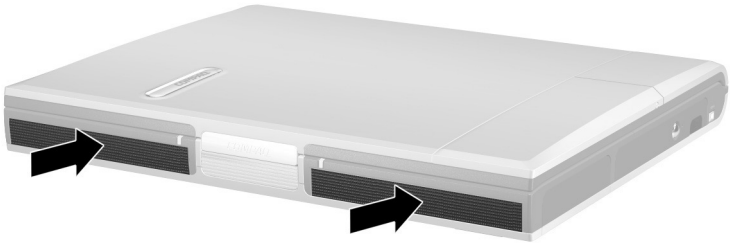


Top Components: Function and Keypad Keys

- | | |
|----------------------|---|
| ① Function keys (12) | Perform system and application tasks. For example, in Windows and many applications, pressing F1 opens a Help file. When combined with the Fn key, the function keys F2 through F4 and F7 through F12 perform additional tasks as hotkeys.* |
| ② Fn key | Combines with other keys to perform system tasks. For example, pressing the Fn+F7 hotkeys decreases screen brightness and pressing the Fn+F8 hotkeys increases screen brightness. |
| ③ Keypad keys (15)* | Can be used like the keys on an external numeric keypad. |

*For more information about using hotkeys or keypad keys, see the *Hardware Guide*, Chapter 2, “Pointing Devices and Keyboard,” on the *Documentation Library CD*.”

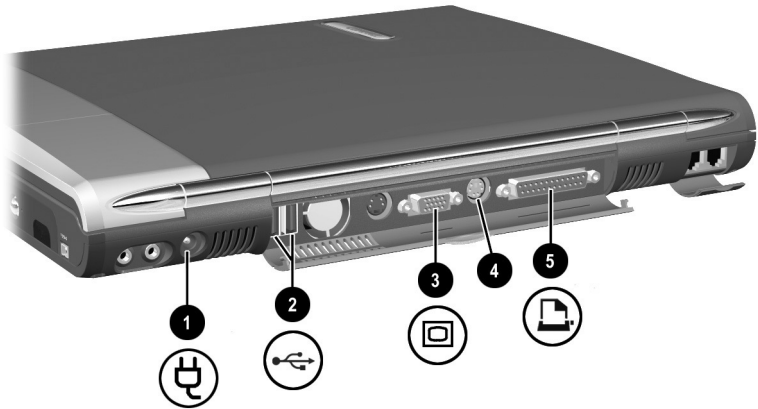
Front Panel Components



| Front Panel Components | |
|------------------------|-----------------------|
| Stereo speakers (2) | Produce stereo sound. |

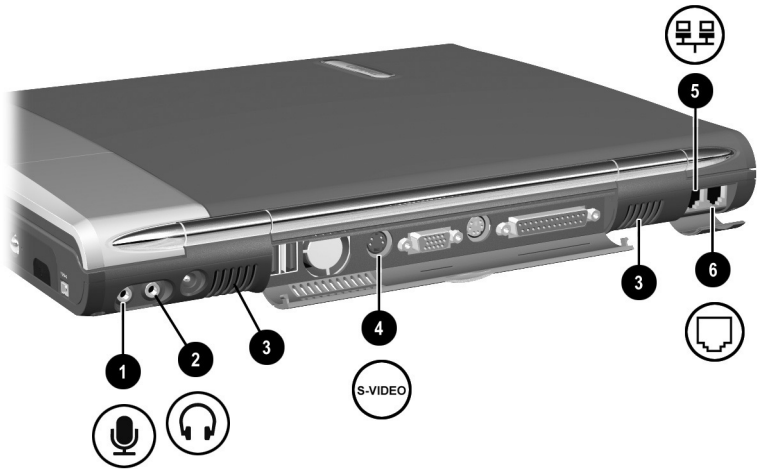
Rear Panel Components

Connectors



| Rear Panel Components: Connectors | | |
|--|----------------------------|--|
| ❶ | DC power connector | Connects an AC Adapter. |
| ❷ | USB connectors (2) | Connect optional USB devices. |
| ❸ | External monitor connector | Connects an optional external monitor or overhead projector. |
| ❹ | Keyboard/mouse connector | Connects an optional PS/2 keyboard or mouse. |
| ❺ | Parallel connector | Connects an optional parallel device such as a printer. |

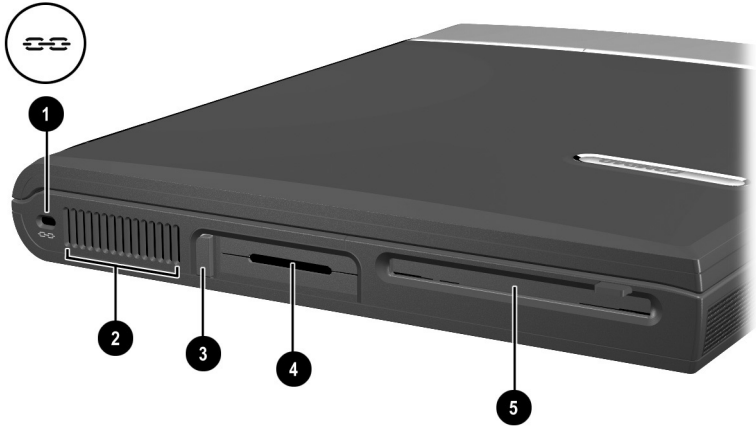
Vents and Jacks



Rear Panel Components: Vents and Jacks

| | | |
|---|----------------------|--|
| ❶ | Microphone jack | Connects an optional single-sound channel microphone. |
| ❷ | Audio-out jack | Connects optional headphones, a headset, or powered stereo speakers. Also connects the audio function of an audio/video device such as a television or VCR. |
| ❸ | Vents for fan (2) | Internal fan and vents allows airflow to cool internal components. <div style="display: flex; align-items: center;"> <div style="margin-right: 10px;">△</div> <p>To prevent overheating, do not obstruct the vent. Do not allow a hard surface, such as an adjoining optional printer, or a fabric, such as bedding or clothing, to block airflow.</p> </div> |
| ❹ | S-video-out jack | Connects an optional S-video device such as a television, VCR, or camcorder. |
| ❺ | RJ-45 network jack | Connects a network cable. A network cable is included with select models. |
| ❻ | RJ-11 telephone jack | Connects the modem cable. |

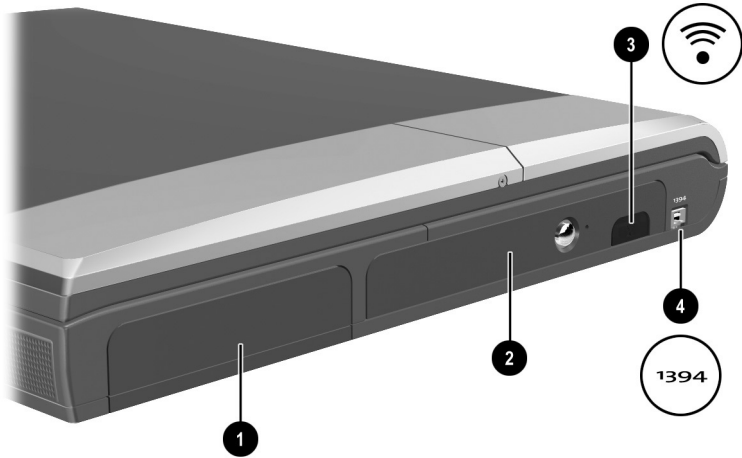
Left Side Components



Left Side Components

| | | |
|---|----------------------|--|
| ① | Security cable slot | Attaches an optional security cable to the notebook. |
| ② | Vent | Allows airflow to cool internal components. ⚠ To prevent overheating, do not obstruct the vent. Do not allow a hard surface, such as an adjoining optional printer, or a fabric, such as bedding or clothing, to block airflow. |
| ③ | PC Card eject button | Ejects an optional PC Card from the PC Card slot. |
| ④ | PC Card slot | Supports an optional Type I or Type II 32-bit (CardBus) or 16-bit PC Card. |
| ⑤ | Diskette drive | Provides a slot for a standard 3.5-in. diskette. |

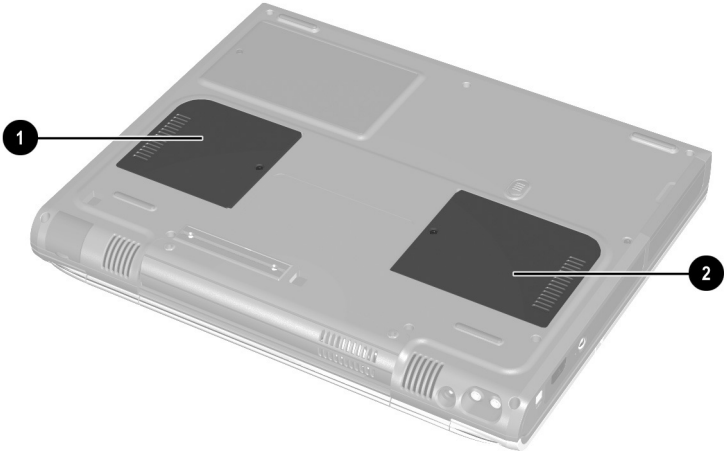
Right Side Components



| Right Side Components | | |
|-----------------------|-------------------|---|
| 1 | Battery bay | Holds the battery pack. |
| 2 | Optical drive bay | Holds CD-ROM, CD-RW, DVD, or DVD/CD-RW drives. |
| 3 | Infrared port | Provides wireless communication between the notebook and an optional IrDA-compliant device. |
| 4 | 1394 Connector | Connects an optional 1394 device. |

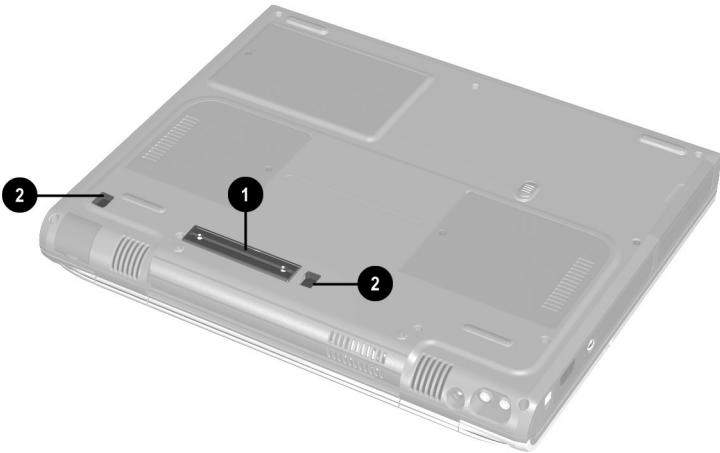
Underside Components

Memory and Mini PCI Compartments



| Underside Components: Memory and Mini PCI Compartments | | |
|---|--|--|
| ❶ | Mini PCI (Peripheral Component Interconnect) compartment | Supports an optional mini PCI board such as a modem board. (A modem board is included with some notebook models.) |
| ❷ | Memory compartment | Contains 2 memory slots for PC2100-compliant memory boards. As shipped, the memory compartment may contain 1 or 2 memory boards. |

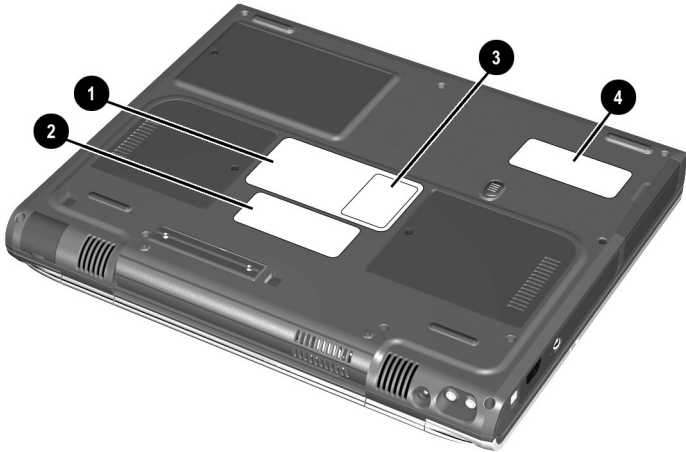
Docking Components



Underside Components: Docking Components

- | | |
|------------------------------|---|
| ❶ Docking connector | Connects the notebook to an optional port replicator. The docking connector has a plastic cover that must be opened before docking. |
| ❷ Docking latch recesses (2) | Help secure the notebook to a port replicator. |
-

Labels



Underside Components: Labels

| | | |
|---|--|---|
| ① | System label | Provides regulatory information about the notebook. |
| ② | Microsoft Certificate of Authenticity label | Contains your Product Key number. You may need this information to update or troubleshoot the operating system. |
| ③ | Optional MultiPort agency approvals label (models that ship with a wireless device only) | Lists the countries in which this optional wireless device has been approved for use. You may need this information to use the wireless device while traveling. |
| ④ | Serial number | Identifies the notebook. You will need this number if you call Compaq customer support or download software from the Compaq Web site. |

 The appearance and position of labels vary by model.

Additional Standard Components

The components included with the notebook vary by geographical region and the notebook hardware ordered. The following illustrations and tables identify the standard external components included with most notebook models.



These illustrations do not include printed documentation, supplementary software, or drives.

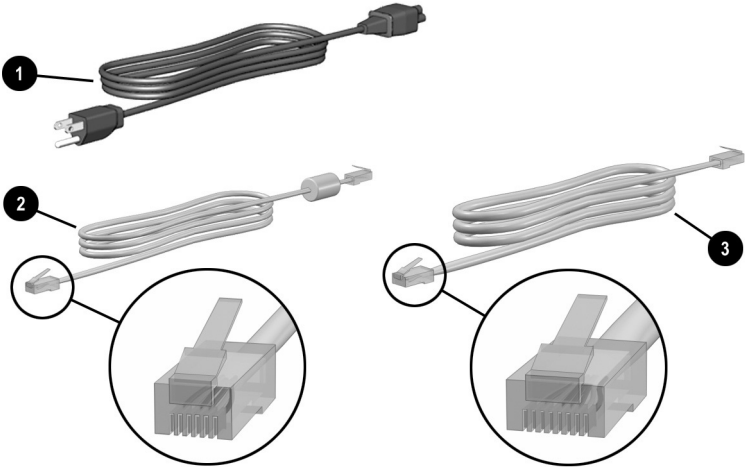
Documentation and Restore CDs





Additional Standard Components: Documentation and Restore CDs

| | |
|--|---|
| <p>① <i>Documentation Library CD</i></p> | <p>Includes the following guides:</p> <ul style="list-style-type: none"> ■ <i>Hardware Guide</i> ■ <i>Software Guide</i> ■ <i>Modem and Networking</i> ■ <i>Modem Command Guidelines (Advanced Users Only)</i> ■ <i>Lucent/Agere Command Set</i> ■ <i>Conexant Command Set</i> ■ <i>Maintenance, Shipping and Travel</i> ■ <i>Troubleshooting</i> ■ <i>Regulatory and Safety Notices</i> |
| <p>② <i>Restore CDs</i></p> | <p>Allow you to reinstall the software preinstalled on the notebook.</p> |

Cord and Cables

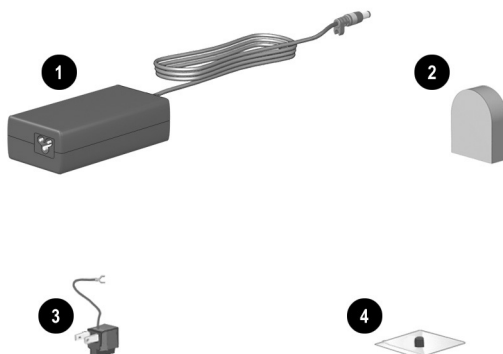


Additional Standard Components: Cord and Cables

- | | |
|--------------------------------------|--|
| ① Power cord* | Connects the AC Adapter to an AC electrical outlet. |
| ② Modem cable | Connects the modem to an RJ-11 telephone jack or to a country-specific modem adapter.  The modem cable has a 6-pin, RJ-11 telephone connector at each end. |
| ③ Network cable (select models only) | Connects the notebook to an Ethernet network jack.  The network cable has an 8-pin, RJ-45 network connector at each end. |

*Power cords vary in appearance by region.

Adapters and Accessories



Additional Standard Components: Adapters and Accessories

| | | |
|---|---|---|
| ① | AC Adapter* | Converts AC power to DC power. |
| ② | Country-specific modem adapter (included by region as required) | Adapts the modem cable to a non-RJ-11 telephone jack. |
| ③ | Japan-specific outlet adapter (Japan only) | Connects the AC Adapter to a 2-prong electrical outlet. |
| ④ | Spare pointing stick cap (dual device models only) | Replaces a worn pointing stick cap. |

*AC Adapters vary in appearance by region.

Index

A

AC Adapter

- connecting 1–2, 1–3
- identifying 4–19
- light 4–4
- troubleshooting 3–2

Acrobat Reader

- installing 2–6
- using 2–8

adapter

- for AC power cord. *See* AC Adapter

- for connecting AC Adapter to electrical outlet (Japan only) 4–19

- for connecting notebook to AC power 1–2, 1–3
- for modem 4–19

airflow vent 4–12

application key 4–7

applications. *See* software

audio-out jack 4–11

autorun 2–6

B

battery

- power 1–8

battery bay 4–13

battery light 4–4

button(s)

- Easy Access 4–7
- PC Card eject 4–12
- power 4–6
- volume 4–6
- See also* key(s); latch(es); switch, display

C

cable

- AC Adapter 1–2, 1–3
- DC (optional) 4–10
- modem 4–11, 4–18
- modem vs. network 4–18
- network 4–11, 4–18
- surge protection 1–8

camcorder (optional)

- troubleshooting 3–5

cap, replacement pointing stick 4–19

caps lock light 4–5

CD drive (optional)

- IDE drive light 4–5
- inserting 2–5

CD(s)

- displaying contents of 2–6
- Restore 3–6

Compaq customer support

- contacting Compaq 3–7
- notebook documentation 2–8
- troubleshooting 3–1

- Compaq utilities, installing 2–3
 - See also* software
- Compaq Web site 3–7
- compartment
 - memory 4–14
 - mini PCI (peripheral component interconnect) 4–14
 - See also* battery bay
- connector(s)
 - 1394 device (optional) 4–13
 - AC Adapter 4–18
 - audio-out 4–11
 - DC power 1–2, 1–3, 4–10
 - docking 4–15
 - external monitor 4–10
 - keyboard/mouse 4–10
 - microphone 4–11
 - modem cable 4–11
 - network cable 4–11
 - parallel 4–10
 - S-video-out 4–11
 - USB 4–10
 - See also* port(s)
- cord, power 4–18
 - connecting 1–2, 1–3
 - surge protection 1–8
 - troubleshooting 3–2
 - See also* cable
- country-specific modem adapter 4–19
- currency formats, setting 2–1

- customer support
 - accessing application Help files 3–5
 - accessing Windows Help files 3–5
 - contacting Compaq 3–7
 - notebook documentation 2–8
 - troubleshooting 3–1

D

- date, setting 2–1
- DC cable (optional) 4–10
- DC power connector 4–10
 - connecting AC Adapter to 1–2, 1–3
- devices, external (optional)
 - troubleshooting 3–5
- diskette drive (optional) 4–12
 - See also* drives
- display
 - closing notebook 4–6
 - opening 1–4
- display components 4–1
- display switch 4–6
- display, internal
 - release latch 4–1
 - See also* monitor, external (optional)
- docking base (optional)
 - using during initial setup 1–3
 - using while installing software 2–3
- docking components
 - connector 4–15
 - latch 4–15

Documentation Library CD 4–17
 displaying contents of 2–6
 finding information within a
 guide 2–8
 selecting a guide 2–7

drive light 4–5

drives

designations 2–6
 diskette 4–12
 inserting or removing while
 installing software 1–6

DVD drive (optional)

IDE drive light 4–5

E

Easy Access buttons 4–7

electrical storm, safety issues 1–8

End User License Agreement 1–6

external hardware

adapters and accessories 4–19
 cords and cables 4–18
 display components 4–1
 front components 4–9
 left side components 4–12
 pointing device components
 (dual device models) 4–3
 pointing device components
 (TouchPad models) 4–2
 rear panel components 4–10 to
 4–11
 right side components 4–13

top components 4–4 to 4–8

keyboard and drive lights
 4–5

power lights 4–4

underside components 4–14 to
 4–16

external monitor connector 4–10

F

fan vents 4–11

FCC (Federal Communications
 Commission) 1–8

function keys (F1, F2, etc.) 4–8

H

hard drive

IDE drive light 4–5

Hardware Guide 2–7

Hibernation

described 3–3

exiting 3–3, 4–6

initiating 4–6

I

IDE (Integrated Drive Electronics)
 light 4–5

identifying components

adapters and accessories 4–19

cords and cables 4–18

display 4–1

documentation and restore CDs
 4–17

front 4–9

left side 4–12

pointing device (dual device
 models) 4–3

- pointing device (TouchPad models) 4-2
- rear panel 4-10 to 4-11
- right side 4-13
- top 4-4 to 4-8
- underside 4-14 to 4-16
- infrared port 4-13
- internal fan vent 4-11

J

- Japan-specific outlet adapter 4-19

K

- key(s)
 - function (F1, F2, etc.) 4-8
 - keypad 4-8
 - Microsoft logo 4-7
 - Windows application 4-7
 - See also* button(s); latch(es); switch, display
- keyboard language 2-1
- keyboard lights 4-5
- keyboard/mouse connector 4-10
- keypad keys 4-8

L

- label
 - Certificate of Authenticity 4-16
 - MultiPort agency approvals 4-16
 - serial number 4-16
 - system 4-16
- language
 - choosing during setup 1-6
 - selecting keyboard 2-1

- latch(es)
 - display release 4-1
 - docking 4-15
- light
 - AC Adapter 4-4
 - battery 4-4
 - caps lock 4-5
 - drive 4-5
 - keyboard 4-5
 - power 4-4
 - power/standby 4-4

M

- Maintenance, Shipping and Travel* guide 2-8, 4-17
- memory
 - compartment 4-14
- microphone jack 4-11
- microphone, internal 4-1
- Microsoft logo keys 4-7
- mini PCI (peripheral component interconnect) compartment 4-14
- modem
 - cable 4-18
 - country-specific, adapter 4-19
 - Modem and Networking* guide 2-7, 4-17
 - Modem Command Guidelines (Advanced Users Only)* 2-8, 4-17
 - surge protection 1-8
- monitor, external (optional)
 - external monitor connector 4-10
 - troubleshooting 3-5

-
- MultiPort (optional)
 - location of 4-1
 - MultiPort agency approvals label 4-16
 - N**
 - network
 - cable 4-11, 4-18
 - Modem and Networking* guide 4-17
 - surge protection 1-8
 - number(s)
 - Product Key 4-16
 - serial 4-16
 - O**
 - opening the notebook 1-4
 - operating system
 - Product Key number 4-16
 - optical drive bay 4-13
 - overhead projector (optional)
 - external monitor connector 4-10
 - troubleshooting 3-5
 - P**
 - parallel connector
 - identifying 4-10
 - troubleshooting 3-5
 - passwords 3-8
 - PC Card
 - eject button 4-12
 - slot 4-12
 - phone numbers, Compaq 3-7
 - pointing device(s)
 - dual device model components 4-3
 - replacement pointing stick cap 4-19
 - TouchPad model components 4-2
 - port replicator (optional)
 - docking connector 4-15
 - using during initial setup 1-3
 - using while installing software 2-3
 - port(s)
 - infrared 4-13
 - power button 4-6
 - power connector, DC 4-10
 - connecting AC Adapter to 1-2, 1-3
 - power cord 4-18
 - connecting 1-2, 1-3
 - surge protection 1-8
 - troubleshooting 3-2
 - power surges 1-8
 - power/standby light 4-4
 - troubleshooting 3-3
 - printer (optional) 3-5
 - Product Key number 4-16
 - projector, overhead
 - troubleshooting 3-5
 - projector, overhead. *See* overhead projector (optional)
 - R**
 - RAM (Random Access Memory) 3-3
 - regional settings 2-1
 - regulatory information
 - Class B designation (FCC) 4-17
-

Regulatory and Safety Notices
guide 2–8
system label 4–16
release latch for internal display
4–1
resolution, setting screen 2–1
Restore CDs 3–6, 4–17
RJ-11 telephone jack
identifying 4–11
modem cable 4–18
RJ-45 network jack
identifying 4–11
network cable 4–18

S

screen area setting (Windows 2000 Professional) 2–2
screen resolution, setting 2–1
security cable (optional) slot 4–12
serial number 4–16
Setup Compaq Software icon 2–3
shutdown, Windows 1–7
slot(s)
PC Card 4–12
security cable (optional) 4–12
software
accessing Help files in 3–5
Acrobat Reader 2–6
antivirus 2–2
installing optional 2–3
regional settings 2–1
reinstalling 3–6
screen resolution settings 2–1
setting up 1–6
Software Guide 4–17
speakers, internal stereo 4–9

Standby
described 3–3
exiting 3–3, 4–6
power/standby light 4–4
stereo speakers 4–9
surge protection 1–8
S-video devices (optional)
connector 4–11
switch, display 4–6
system label 4–16

T

technical support
accessing application Help files
3–5
accessing Windows Help files
3–5
contacting Compaq 3–7
notebook documentation 2–8
troubleshooting 3–1
telephone (RJ-11) jack
identifying 4–11
modem cable 4–18
telephone numbers, Compaq 3–7
television (optional)
troubleshooting 3–5
1394 connector 4–13
time, setting 2–1
traveling with the notebook
Maintenance, Shipping and Travel guide 2–8, 4–17
MultiPort agency approvals
label 4–16
troubleshooting
computer viruses 3–6
contacting Compaq 3–7

- external device problems 3–5
- Hibernation or Standby
 - problems 3–3
- overheating problems 3–4
- power problems 3–2
- Quick Solutions checklist 3–2
- response problems 3–4
- software problems 3–6
- Troubleshooting* guide 2–8, 4–17
- turning off the notebook
 - emergency procedures 3–4
 - standard procedures 1–7
- turning on the notebook
 - standard procedure 1–5
 - troubleshooting 3–2

U

USB

- connectors 4–10

utilities, Compaq

- displaying descriptions of 2–3
- installing 2–3
- reinstalling 3–6

See also software

V

VCR (optional)

- troubleshooting 3–5

vent(s)

- airflow 4–12
- fan 4–11
- troubleshooting 3–4

viruses, computer

- protecting against 2–2
- troubleshooting 3–6

volume buttons 4–6

W

Web site

- Compaq 3–7
- Microsoft 3–5

Windows

- Help files 3–5
- regional settings 2–1
- screen resolution settings 2–1
- shut down procedures 1–7

Windows application key 4–7

Worldwide Telephone Numbers

- booklet 3–7