

hp deskjet 900c series Printer Network Guide for Windows

English



Acknowledgments

Microsoft, MS, MS-DOS, and Windows are registered trademarks of Microsoft Corporation (U.S. patent numbers 4955066 and 4974159).

MMX and Pentium are U.S. registered trademarks of Intel Corporation.

Novell and NetWare are registered trademarks of Novell, Inc.

TrueType is a U.S. trademark of Apple Computer, Inc.

Notice

The information contained in this document is subject to change without notice.

Hewlett-Packard Company makes no warranty of any kind with regard to this material, including, but not limited to, the implied warranties of merchantability and fitness for a particular purpose.

Hewlett-Packard shall not be liable for any errors or for incidental or consequential damages in connection with the furnishing, performance, or use of this material.

All rights reserved. Reproduction, adaptation, or translation of this manual is prohibited without prior written permission of Hewlett-Packard Company, except as allowed under the copyright laws.

No part of this document may be photocopied, reproduced, or translated to another language without the prior written consent of Hewlett-Packard Company.

Edition 1, July, 2000

© Copyright Hewlett-Packard Company 2000

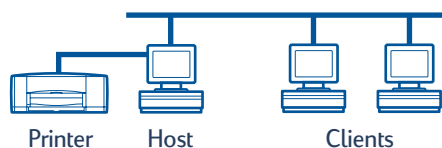
Table of Contents

1	Using Your Printer on a Network	
	Setting Up Your Printer	2
2	Locally Shared Printer Connection	
	Setting Up a Locally Shared Printer	5
	Operating Systems for the Locally Shared Connection	6
	Setting Up Windows 95 and 98 Hosts	6
	Setting Up Windows 2000 Hosts	8
	Setting Up Windows NT 4.0 Hosts	10
	Setting Up Windows for Workgroups 3.11 Hosts	12
	Installing Printer Software on Each Client Computer	13
	Option 1: Point and Print Installation	13
	Option 2: Add Printer Installation	14
	Option 3: Windows for Workgroups 3.11 Installation	16
3	Peer-to-Peer Connection	
	Setting Up a Peer-to-Peer Printer Connection	17
	Operating Systems for the Peer-to-Peer Connection	18
	Installing Printer Software on Each of the Clients	18
	Windows 95 and 98 Client Computers	18
	Windows 2000 Client Computers	19
	Windows NT 4.0 Client Computers	20
4	Client Server Network Connection	
	Operating Systems for the Client Server Connection	21
	Windows Terminal Server	21
	Setting Up a Client Server in Windows 2000 or NT 4.0	22
	Setting Up a Client Server in NetWare	23
5	Using Your Printer Software	
	Finding the HP Printer Properties in Windows 95, 98, 2000 or NT 4.0	25
	HP Printer Properties	25
	HP DeskJet Toolbox	26
	Windows for Workgroups 3.11	26
	Appendix	
	Language Codes	27
	Windows 95, 98, 2000, and NT 4.0	27
	Windows for Workgroups 3.11 Clients	27

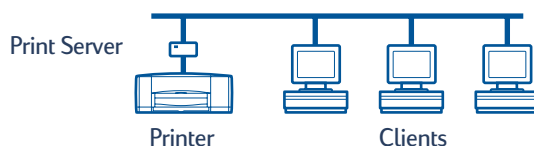
Using Your Printer on a Network

Your HP DeskJet Printer can be shared over a network in three different ways:

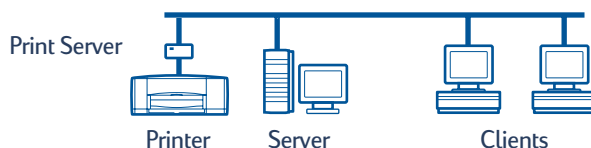
- **Locally Shared:** Share your printer from a network-connected computer by enabling printer sharing on your computer. See “Locally Shared Printer Connection” on page 5.



- **Peer-to-Peer:** Connect your printer to a network via an HP JetDirect External Print Server. See “Peer-to-Peer Connection” on page 17.



- **Client Server Network Connection:** Connect your printer to a network via an HP JetDirect External Print Server. Clients print through a Windows NT, Windows 2000 or NetWare server. See “Client Server Network Connection” on page 21.

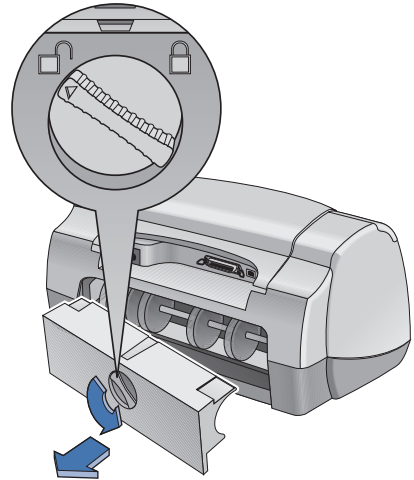


Setting Up Your Printer

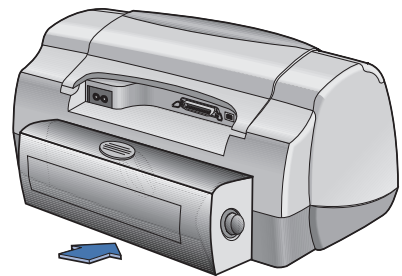
To share your printer on a network, you must connect the printer to your network using one of the methods listed on page 1. Before you set up your printer, check that your computer is fully set up, operational, and meets the minimum system requirements listed in “System Requirements” in your electronic *User's Guide*. To set up your printer:

1 Attach Automatic Two-Sided Printing Module.

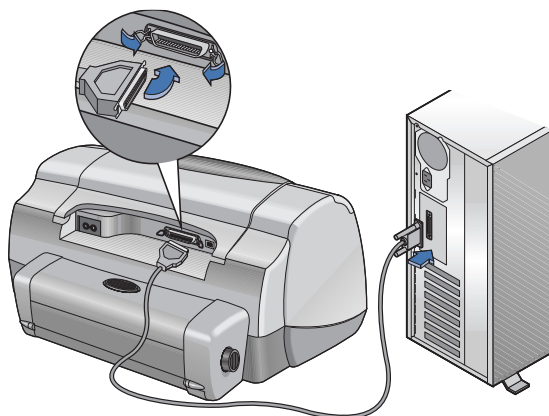
- a Turn knob on printer's Rear Access Door counter-clockwise and remove door.



- b Insert module into back of printer.

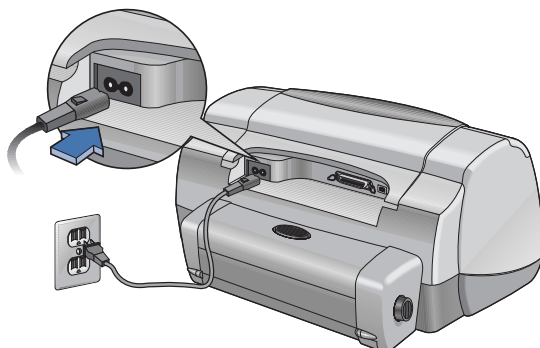


2 Connect Parallel Cable to Host Computer or an HP JetDirect External Print Server.

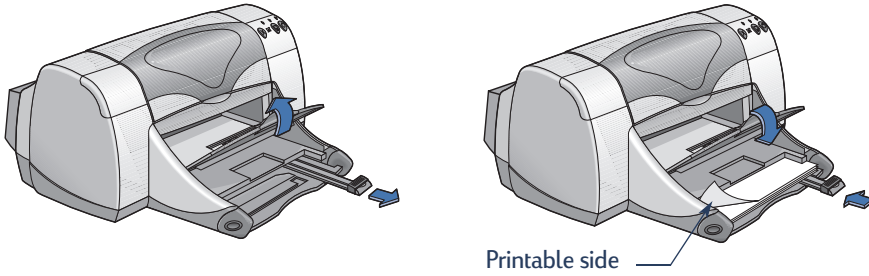


- **Locally Shared:** Connect your printer to the parallel port of the host computer. See “Locally Shared Printer Connection” on page 5 for details.
- **Peer-to-Peer:** Connect your printer to the parallel port of an HP JetDirect External Print Server on your network. See “Peer-to-Peer Connection” on page 17 for details, and consult your print server documentation for help setting up the print server.
- **Client Server Network Connection:** Connect your printer to the parallel port of an HP JetDirect External Print Server, and share the printer from a Windows NT, Windows 2000 or NetWare server on your network. See “Client Server Network Connection” on page 21 for details.


3 Plug in Electrical Power Cord.

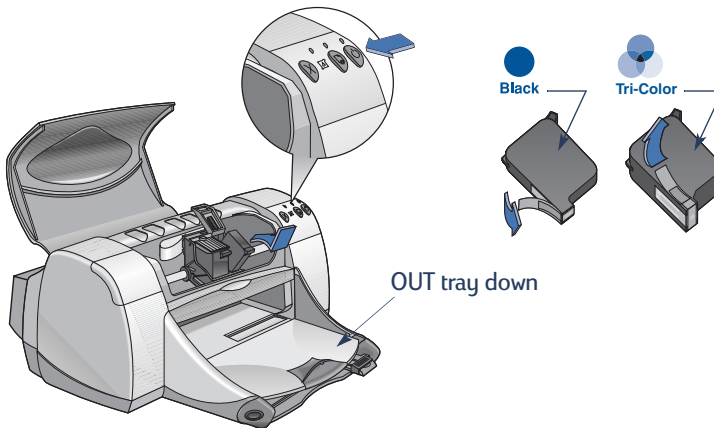


4 Load White Paper.



5 Insert Print Cartridges.

- a Make sure OUT tray is down and press Power Button  to turn printer on.
- b Open top cover and raise cradle latch.
- c Remove vinyl tape from print cartridges.
Do NOT touch or remove copper strip on print cartridges.
- d Push print cartridge straight down into print cartridge cradle.
- e Close latch and then close top cover.
A calibration page will print.



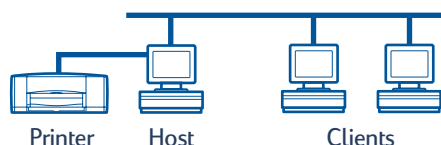
Note: The part numbers for your two print cartridges are:

- Black HP 51645 Series or HP No. 45
- Tri-Color HP C6578 Series or HP No. 78

Locally Shared Printer Connection

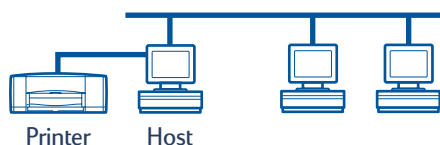
In the locally shared configuration, the printer is connected directly to the parallel or USB port of a selected computer that functions as a host to other computers on the network. To locally share your printer, the printer software must be installed on the host computer and on each client computer.

Note: USB is only supported in Windows 98 and 2000.



Setting Up a Locally Shared Printer

- 1 Set up the printer. See “Setting Up Your Printer” on page 2.



Note: For best results, do not install any parallel connected devices, such as a scanner or tape backup system, between the printer and computer.

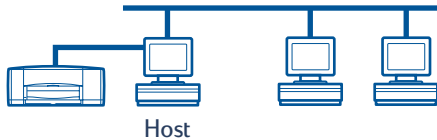
- 2 Install the printer software on the host computer, and share your printer on the network. See the section “Operating Systems for the Locally Shared Connection” on page 6 to find instructions for your operating system.
- 3 Install the printer software on each of the client computers. See the section “Operating Systems for the Locally Shared Connection” on page 6 to find instructions for your operating system.

Operating Systems for the Locally Shared Connection

Installation instructions for the supported operating systems can be found on:

Operating System	Host	Client
Windows 95 and 98	See page 6	See page 13
Windows 2000	See page 8	See page 13
Windows NT 4.0	See page 10	See page 13
Windows for Workgroups 3.11	See page 12	See page 16

Setting Up Windows 95 and 98 Hosts



Preparing Your Computer to Share Your Printer on the Network

- 1 Turn on the host computer.
- 2 Click **Start** → **Settings** → **Control Panel**.
- 3 In the Control Panel, double-click **Network**.
- 4 Click the **File and Print Sharing** button.
- 5 Click to select **I want to be able to allow others to print to my printer(s)**.
- 6 Click **OK**, and then click **OK** to close the Network dialog box. If prompted, restart Windows.

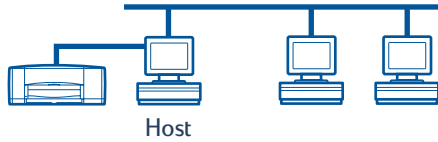
Installing Printer Software on a Windows 95 or 98 Host

- 1 Click **Start** → **Settings** → **Printers**.
- 2 Double-click **Add Printer**, and then click **Next**.
- 3 Choose **Local Printer** as the printer connection, and then click **Next**.
- 4 Click the **Have Disk** button, and insert the hp deskjet 900c series printer software CD into your CD-ROM drive.
- 5 In the **Install From Disk** dialog box, click **Browse**, then move to the hp9x01.inf file in the folder for your language and the Windows 95/98 operating system. See the language code chart on page 27.
Example: To select the hp9x01.inf file for the English language and the Windows 95 or 98 operating system, move to `enu\driver\win9x_me\hp9x01.inf`.
- 6 Click **OK**, and then click **OK** to close the **Install From Disk** dialog box.
- 7 Click **Next**.
- 8 Select the printer port from the **Available ports** list (LPT1 is recommended), and then click **Next**.
- 9 Accept the default name for your printer (recommended) or enter a new name. To use this printer as your default printer, click **Yes**; otherwise click **No**.
- 10 Click **Finish**.

Sharing Your Printer on the Network

- 1 Select **Start** → **Settings** → **Printers** from the Taskbar.
- 2 Right-click the hp deskjet 900c series printer icon and choose **Sharing** from the shortcut menu.
- 3 Select **Shared As** and enter the name you want to use for your printer on the network. If you want to restrict access to your printer, enter a password in the Password box; users will need to enter this password in order to use your printer.
Note: See your Windows 95 or 98 documentation for more information about sharing your printer.
- 4 Click **OK**.
- 5 If a password was set, retype it and click **OK**.

Setting Up Windows 2000 Hosts



Installing Printer Software on a Windows 2000 Host

- 1 Turn on the host computer.
- 2 Click **Start** → **Settings** → **Printers**.
- 3 Double-click **Add Printer**, and then click **Next**.
- 4 Choose **Local printer** as the printer connection, and then click **Next**.
- 5 Select a printer port in the **Use the following port** list (**LPT1** is recommended), and then click **Next**.
- 6 Click the **Have disk** button.
- 7 Insert the hp deskjet 900c series printer software CD into your CD-ROM drive.
- 8 Click **Browse**.
- 9 Move to the hp2k01.inf file in the folder for your language and the Windows 2000 operating system. See the language code chart on page 27.

Example: To select the hp2k01.inf file for the English language and the Windows 2000 operating system, move to **enu\driver\win_2k\hp2k01.inf**.

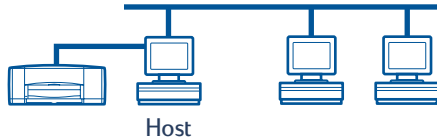
- 10 Click **Open**, and then click **OK** to close the **Install From Disk** dialog box.
- 11 Click **Next**.
- 12 Accept the default name for your printer (recommended) or enter a new name. To use this printer as your default printer, click **Yes**; otherwise click **No**.
- 13 Click **Next**.

- 14 Click **Share as** and type the name you want to use for your printer on the network.
- 15 Click **Next**.
- 16 Type the location of your printer and any additional comments (optional), and then click **Next**.
- 17 To print a test page, click **Yes**; otherwise click **No**. Click **Next**.
- 18 Click **Finish**.

Note: You can copy Windows 95 or 98 printer software to your host to allow for a Point and Print installation of printer software on Windows 95 and 98 client computers. Click **Start → Settings → Printers**. Right-click the printer icon and choose **Properties**. Click the **Sharing** tab, and then click **Shared as**. Click **Additional Drivers**. In the **Additional Drivers** list, click a driver. Click **OK** and then follow the instructions that appear on your screen.

An alternate driver is not needed for a Point and Print installation on a Windows NT 4.0 client.

Setting Up Windows NT 4.0 Hosts



Installing Printer Software on a Windows NT 4.0 Host

Note: To install the printer software on a Windows NT 4.0 system, you must have administrator privileges to the host computer.

- 1 Turn on the host computer.
- 2 Click **Start** → **Settings** → **Printers**.
- 3 Double-click **Add Printer**.
- 4 Choose **My Computer** as the printer connection, and then click **Next**.
- 5 Select a printer port from the **Available ports** list (**LPT1** is recommended), then click **Next**.
- 6 Click the **Have Disk** button, and insert the hp deskjet 900c series printer software CD into your CD-ROM drive.
- 7 In the **Install From Disk** dialog box, click **Browse**, then move to the hpfnt01.inf file in the folder for your language and the Windows NT 4.0 operating system. See the language code chart on page 27.

Example: To select the hpfnt01.inf file for the English language and the Windows NT 4.0 operating system, move to `enu\driver\win_nt\hpfnt01.inf`.

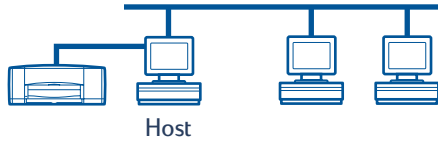
- 8 Click **Open**, and then click **OK**.
- 9 Click **Next**.
- 10 Accept the default name for your printer (recommended) or enter a new name, and then click **Next**.

- 11 Click **Shared** and enter a share name for the printer.
- 12 To print a test page, click **Yes**; otherwise click **No**. Click **Finish**.

Note: You can copy Windows 95 or 98 printer software to your host to allow for a Point and Print installation of printer software on Windows 95 or 98 client computers. Click **Start** → **Settings** → **Printers**. Right-click the printer icon and choose **Properties**. Click the **Sharing** tab, and then click **Shared**. In the **Alternate Drivers** list, click a driver. Click **OK** and then follow the instructions that appear on your screen.

An alternate driver is not needed for a Point and Print installation on a Windows 2000 client.

Setting Up Windows for Workgroups 3.11 Hosts



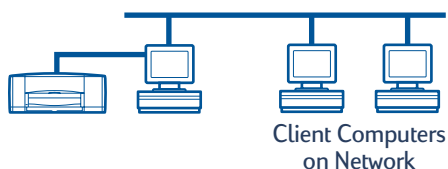
Installing Printer Software on the Windows for Workgroups 3.11 Host

- 1 Turn on the host computer.
- 2 Close any virus protection programs or other software programs that are running on the computer.
- 3 Insert the hp deskjet 900c series printer software CD into your CD-ROM drive, and select **File → Run** in the File Manager.
- 4 If your CD-ROM drive is drive D, enter **D:\setup.exe**. Otherwise, enter **[Your drive letter]:\setup.exe**.
- 5 Click **OK**.
- 6 Follow the on-screen instructions to install your printer software.

Sharing Your Printer on the Network

- 1 Go to the **Main Program Group**, and double-click **Print Manager**.
- 2 Select the hp deskjet 900c series printer icon, and choose **Share This Printer As** from the **Printer** menu.
- 3 Choose your printer from the **Printer** pop-up menu.
- 4 Enter a Share Name for your printer.

Installing Printer Software on Each Client Computer



Important Make sure you have installed printer software on the host and shared the printer before you install printer software on a client computer.

When you are installing the software for a locally shared printer on a client computer, you have three options:

- **Point and Print Installation** (see page 13): This option is quicker than the Add Printer Installation. It is supported by Windows 95, 98, 2000, and NT.
- **Add Printer Installation** (see page 14): This option takes more time than the Point and Print installation. It is supported by Windows 95, 98, 2000, and NT.
- **Windows for Workgroups 3.11 Installation** (see page 16): This option installs printer software using the setup.exe file.

Option 1: Point and Print Installation

Note: If your host computer is a Windows NT 4.0 or 2000 server, and you installed printer software for other Windows operating systems on it (see the note on pages 9 and 11), you can use Point and Print to install printer software on client computers running Windows 95, 98, 2000, or NT 4.0, directly from the host.

- 1 Go to the Windows desktop.
- 2 Double-click the **Network Neighborhood** icon.
- 3 Double-click the icon for the computer on which the printer is installed.
- 4 Right-click the printer icon and choose **Install**. The **Add Printer Wizard** dialog box appears.
- 5 If you want to print from MS-DOS based programs, click **Yes**.
- 6 Click **Next**.
- 7 Accept the default printer name (recommended) or type a new name.
- 8 To use this printer as your default printer, click **Yes**; otherwise click **No**.
- 9 Click **Next**.

10 To print a test page, click **Yes**; otherwise click **No**.

11 Click **Finish**.

Note: For additional Point and Print installation options, see your Windows 95, 98, 2000, or Windows NT 4.0 documentation.

Option 2: Add Printer Installation

Installing Printer Software on Windows 95 or 98 Clients

1 Click **Start** → **Settings** → **Printers**.

2 Double-click **Add Printer**, then click **Next**.

3 Choose **Network printer** as the printer connection, then click **Next**.

4 Click **Browse**. Double-click the host computer on which the printer is installed, and then click the printer. Click **OK**, and then click **Next**.

or

Enter the path or queue name of the printer, and then click **Next**. For example, type:
\\HostComputerName\PrinterName or \\ServerName\QueueName.

5 Click the **Have Disk** button, and insert the hp deskjet 900c series printer software CD into your CD-ROM drive.

6 In the **Install From Disk** dialog box, click **Browse**, then move to the hp9x01.inf file in the folder for your language and the Windows 95/98 operating system. See the language code chart on page 27.

Example: To select the hp9x01.inf file for the English language and the Windows 95 or 98 operating system, move to `enu\driver\win9x_me\hp9x01.inf`.

7 Click **OK**, and then click **OK** to close the **Install From Disk** dialog box.

8 Click **Next**.

9 Accept the default name for your printer (recommended) or type a new name.

10 Click **Finish**.

Installing Printer Software on Windows 2000 Clients

- 1 Click **Start** → **Settings** → **Printers**.
- 2 Double-click **Add Printer**.
- 3 Click **Next**.
- 4 Choose **Network printer** as the printer connection, and then click **Next**.
- 5 Click **Type the printer name**, or click **Next** to browse for a printer.

Note: You can also locate a printer by searching in the Directory or connecting to a printer on the Internet or your intranet. For more information on these options, see the Microsoft documentation for Windows 2000.

- 6 Click **Next** to browse for the printer.
- 7 In the **Shared printers** box, double-click the host computer on which the printer is installed, and then click the printer. Click **Next**.
- 8 To use this printer as your default printer, click **Yes**; otherwise click **No**.
- 9 Click **Next**.
- 10 Click **Finish**.

Installing Printer Software on Windows NT 4.0 Clients

Note: To install the printer software on a Windows NT 4.0 system, you must have administrator privileges for the host computer.

- 1 Click **Start** → **Settings** → **Printers**.
- 2 Double-click **Add Printer**, then click **Next**.
- 3 Choose **Network printer server** as the printer connection, then click **Next**.
- 4 Browse the **Shared Printers** list box to locate the host computer and printer.

or

Enter the path or queue name of the printer. For example, type:

`\\HostComputerName\PrinterName` or `\\ServerName\QueueName`

Note: If the host computer is a Windows 95 or 98 computer, you will need to install the printer software from the printer software CD.

- 5 To use this printer as your default printer, click **Yes**; otherwise click **No**.
- 6 Click **Next**, and then click **Finish**.
- 7 If prompted, restart Windows.

Option 3: Windows for Workgroups 3.11 Installation

- 1 Insert the **hp deskjet 900c series** printer software CD into your CD-ROM drive and select **Run** from the **Program Manager File** menu.
- 2 If your CD-ROM drive is drive D, enter **D:\setup.exe**, and click **OK**. Otherwise, enter **[Your drive letter]:\setup.exe**, and click **OK**.
- 3 When prompted for the printer name and port, select the LPT1 port.
- 4 Click **OK** and complete the installation.
- 5 If prompted, restart Windows.
- 6 Double-click **Printers** from the **Control Panel**.
- 7 Select the hp deskjet 900c series printer and click **Connect**.
- 8 Choose the port to which the printer is connected.
- 9 Click **Network**, then browse to the queue name or share name of the server. To set up the printer as a permanent network printer on your system, check the **Permanent** box.
- 10 Click **Connect**.

Peer-to-Peer Connection

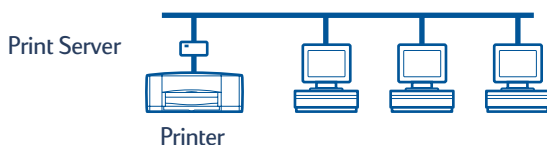
In a peer-to-peer direct network configuration, the printer is directly connected to the network via an HP JetDirect External Print Server, and each computer on the network sends print jobs directly to the HP JetDirect External Print Server.



Setting Up a Peer-to-Peer Printer Connection

- 1 Set up the printer.

See “Setting Up Your Printer” on page 2. In step 2, connect the printer to the HP JetDirect External Print Server with a parallel cable.



- 2 Set up the HP JetDirect External Print Server.

Install and configure the HP JetDirect External Print Server according to the instructions provided with the print server.

- 3 Install the hp deskjet 900c series printer software on each client computer. See the section “Operating Systems for the Peer-to-Peer Connection” on page 18 to find instructions for your operating system.

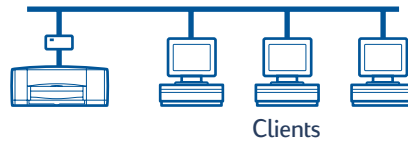
Operating Systems for the Peer-to-Peer Connection

Installation instructions for the supported operating systems can be found on:

Operating System	Page
Windows 95 and 98	18
Windows 2000	19
Windows NT 4.0	20

Note: If the Add Printer Installation starts up automatically, begin with step 4 of the appropriate section.

Installing Printer Software on Each of the Clients



Windows 95 and 98 Client Computers

- 1 Install the HP JetDirect port software on each client according to the instructions included with the print server.
- 2 Click **Start** → **Settings** → **Printers**.
- 3 Double-click **Add Printer**.
- 4 Click **Next**.
- 5 Choose **Local Printer** as the printer connection, and then click **Next**.
- 6 Click the **Have Disk** button, and insert the hp deskjet 900c series printer software CD into your CD-ROM drive.
- 7 In the **Install From Disk** dialog box, click **Browse**, then move to the hp9x01.inf file in the folder for your language and the Windows 95/98 operating system. See the language code chart on page 27.

Example: To select the hp9x01.inf file for the English language and the Windows 95 or 98 operating system, move to `enu\driver\win9x_me\hp9x01.inf`.

- 8 Click **OK**, and then click **OK** to close the **Install From Disk** dialog box.
- 9 Click **Next**.

- 10 Select the printer port, from the **Available ports** list, that you configured when you set up the HP JetDirect External Print Server, and then click **Next**.
- 11 Accept the default name for your printer (recommended) or enter a new name. To use this printer as your default printer, click **Yes**; otherwise click **No**.
- 12 Click **Finish** to complete the installation of the hp deskjet printer software.

Windows 2000 Client Computers

- 1 Install the HP JetDirect port software on each client according to the instructions included with the print server.
- 2 Click **Start** → **Settings** → **Printers**.
- 3 Double-click **Add Printer**.
- 4 Click **Next**.
- 5 Choose **Local printer** as the printer connection, and then click **Next**.
- 6 Select the printer port, from the **Use the following port** list, that you configured when you set up the HP JetDirect External Print Server, and then click **Next**.
- 7 Click the **Have disk** button.
- 8 Insert the hp deskjet 900c series printer software CD into your CD-ROM drive.
- 9 Click **Browse**.
- 10 Move to the hpf2k01.inf file in the folder for your language and the Windows 2000 operating system. See the language code chart on page 27.
Example: To select the hpf2k01.inf file for the English language and the Windows 2000 operating system, move to **enu\driver\win_2k\hpf2k01.inf**.
- 11 Click **Open**, and then click **OK** to close the **Install From Disk** dialog box.
- 12 Click **Next**.
- 13 Accept the default name for your printer (recommended) or enter a new name. To use this printer as your default printer, click **Yes**; otherwise click **No**.
- 14 Click **Next**.

- 15 Click **Next**.
- 16 Type the location of your printer and any additional comments (optional), and then click **Next**.
- 17 To print a test page, click **Yes**; otherwise click **No**. Click **Next**.
- 18 Click **Finish**.

Windows NT 4.0 Client Computers

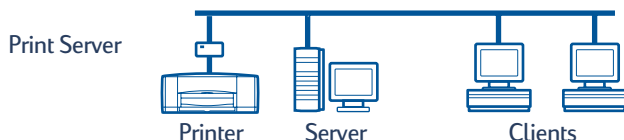
- 1 Install the HP JetDirect port software on each client according to the instructions included with the print server.
- 2 Click **Start** → **Settings** → **Printers**.
- 3 Double-click **Add Printer**.
- 4 Choose **My Computer** as the printer connection, and then click **Next**.
- 5 Select the printer port, from the **Available ports** list, that you configured when you set up the HP JetDirect External Print Server, and then click **Next**.
- 6 Click the **Have Disk** button, and insert the hp deskjet 900c series printer software CD into your CD-ROM drive.
- 7 In the **Install From Disk** dialog box, click **Browse**, then move to the hpfn01.inf file in the folder for your language and the Windows NT 4.0 operating system. See the language code chart on page 27.

Example: To select the hpfn01.inf file for the English language and the Windows NT 4.0 operating system, move to `enu\driver\win_nt\hpfn01.inf`.

- 8 Click **Open**, and then click **OK**.
- 9 Click **Next**.
- 10 Accept the default name for your printer (recommended) or enter a new name, and then click **Next**.
- 11 To print a test page, click **Yes**; otherwise click **No**.
- 12 Click **Finish**.

Client Server Network Connection

In the client server connection, you connect your hp deskjet 900c series printer to the network with an HP JetDirect External Print Server. Clients print to the Windows 2000, NT, or NetWare server that is serviced by the HP JetDirect External Print Server.



Operating Systems for the Client Server Connection

Installation instructions for the supported operating systems can be found on:

Server Operating System	Page
Windows 2000	22
Windows NT 4.0	22
NetWare	23

Client Operating System	Page
Windows 95 or 98	13
Windows 2000	13
Windows NT 4.0	13
Windows for Workgroups 3.11	16

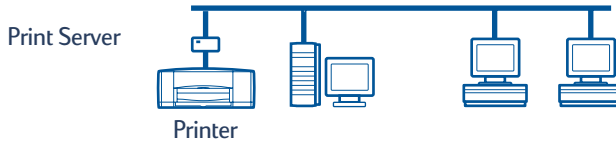
Windows Terminal Server

Windows Terminal Server is supported in Windows 2000 on the hp deskjet 990c series printer through the Add Printer installation path for printer software. For the latest version of the printer software, go to the HP web site at <http://www.hp.com>. For more information, see the Microsoft documentation for Windows Terminal Server.

Setting Up a Client Server in Windows 2000 or NT 4.0

- 1 Set up the printer.

See “Setting Up Your Printer” on page 2. In step 2, connect the printer to the HP JetDirect External Print Server with a parallel cable.

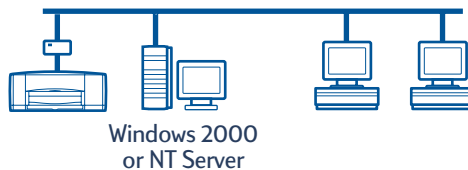


- 2 Set up the HP JetDirect External Print Server.

Install and configure the HP JetDirect External Print Server according to the instructions provided with the print server.

- 3 **Windows 2000 Server:** Install the printer software on the Windows 2000 server and share your printer on the network. See “Installing Printer Software on a Windows 2000 Host” on page 8. In step 5, select the port you configured when you set up the HP JetDirect External Print Server.

Windows NT 4.0 Server: Install the printer software on the Windows NT 4.0 server and share your printer on the network. See “Installing Printer Software on a Windows NT 4.0 Host” on page 10. In step 5, select the port you configured when you set up the HP JetDirect External Print Server.



- 4 Install the printer software on each of the client computers. See “Installing Printer Software on Each Client Computer” on page 13.



Setting Up a Client Server in NetWare

- Refer to the Novell documentation or web site for NetWare printer installation methods and NetWare client software.
- See the documentation that came with your HP JetDirect External Print Server.
- Go to the HP web site at <http://www.hp.com>, and navigate to the network printing site, for information on setting up an HP JetDirect External Print Server in a NetWare environment and for additional network printing information.
- You can copy your hp deskjet 900c series printer software to a NetWare drive. See the language code table on page 27 to help you select which languages and operating systems you should copy.

This page left intentionally blank.

Using Your Printer Software

Use your printer software to control how and what you print through the HP Printer Properties dialog box. In addition, using the HP DeskJet Toolbox, you can maintain your printer and access an electronic copy of the *User's Guide*.

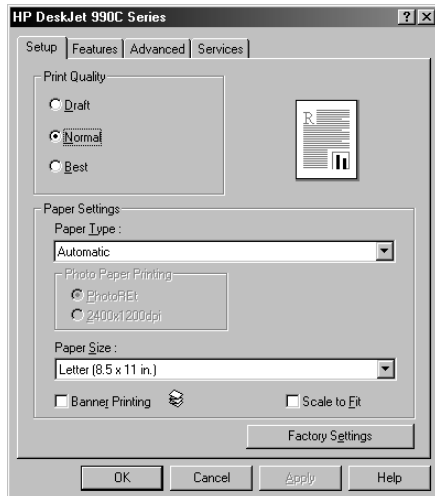
Finding the HP Printer Properties in Windows 95, 98, 2000 or NT 4.0

- 1 From your software program, click **File** → **Print**. Your software program opens a Print dialog box.
- 2 From the **Print** dialog box, click **Properties**. The HP Printer Properties dialog box opens.

HP Printer Properties

In the HP Printer Properties dialog box, print quality, paper size and type are just a few of the options available to you at the click of your mouse.

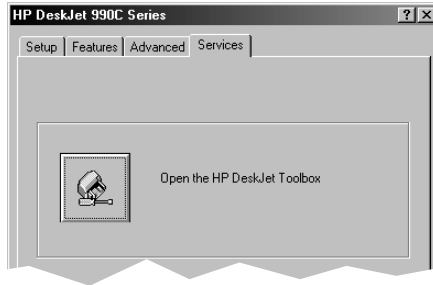
You can right-click any item in the HP Printer Properties dialog box to view help information related to that item.



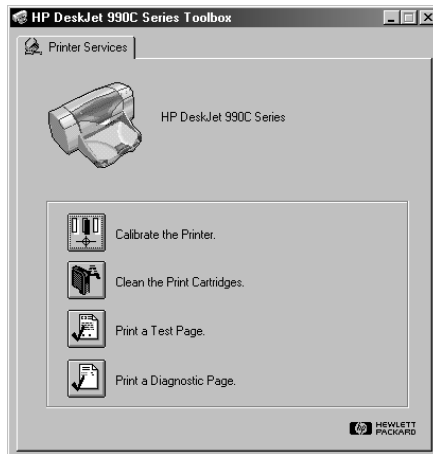
HP DeskJet Toolbox

When you install your printer on a network, your HP Printer Properties dialog box has a Services tab that enables you to access your HP DeskJet Toolbox.

Click the **Services** tab, and then click the **Open the HP DeskJet Toolbox** button to display the HP Toolbox.



In the Printer Services tab of the Toolbox, you can perform printer maintenance services.



You can right-click any item in the Toolbox to view help information related to that item.

Windows for Workgroups 3.11

See “How to Print in Windows 3.1x” in your electronic *User’s Guide* for information on printer software in the Windows 3.1x and Windows for Workgroups 3.11 environments.

Appendix

Language Codes

Windows 95, 98, 2000, and NT 4.0

If you are doing an “add printer” installation, you need to navigate to the INF file in the folder for your language and computer’s operating system.

- Windows 95, 98:
[CD drive letter]:\[language code]\driver\win9x_me\hpf9x01.inf
- Windows 2000:
[CD drive letter]:\[language code]\driver\win_2k\hpf2k01.inf
- Windows NT:
[CD drive letter]:\[language code]\driver\win_nt\hpfnt01.inf

Windows for Workgroups 3.11 Clients

If you want to copy the Windows for Workgroups 3.11 printer software to a shared network resource for later installation from the network to the client, copy the following files:

[CD Drive Letter]:\[language code]\31*.*

Find the language code for your operating system’s language in the table below.

Language	Language code
Bahasa Indonesia	bin
Bulgaria	bul
Chinese, Simplified	chs
Chinese, Traditional	cht
Czech	csy
Danish	dan
Dutch	nld
English	enu
Finnish	fin
French	fra
German	deu
Hungarian	hun

Language	Language code
Italian	ita
Japanese	jpn
Kazakh	kzh
Korean	kor
Norwegian	non
Polish	plk
Portuguese	ptb
Russian	rus
Spanish	esm
Swedish	svc
Thai	tha

Index

A

- Add Printer Installation 13
 - Windows 2000 15
 - Windows 95/98 14
 - Windows for Workgroups 3.11 16
 - Windows NT 4.0 15
- Automatic Two-Sided Printing Module 2

C

- Cartridges 4
- Client Server Connection 21
 - NetWare 23
 - Operating Systems 21
 - Windows 2000/NT 4.0 22
- Clients
 - Locally Shared 13
 - NetWare Client Server 23
 - Peer-to-Peer 18
 - Windows 2000 Client Server 22
 - Windows NT 4.0 Client Server 22

H

- HP DeskJet Toolbox 25, 26
- HP JetDirect Print Server 1, 17, 22
- hpf2k01.inf
 - Windows 2000 8, 19
- hpf9x01.inf
 - Windows 95/98 7, 14, 18
- hpfnt01.inf
 - Windows NT 4.0 10, 20

I

- Inserting Print Cartridges 4
- Installing
 - Automatic Two-Sided Printing Module 2
 - Your Printer 2
- Installing Printer Software
 - NetWare Server 23
 - Windows 2000 Client 13, 15, 19
 - Windows 2000 Host 8
 - Windows 2000 Server 22
 - Windows 95/98 Client 13, 14, 18
 - Windows 95/98 Host 6
 - Windows for Workgroups 3.11
 - Client 16
 - Windows for Workgroups 3.11 Host 12
 - Windows NT 4.0 Client 13, 15, 20
 - Windows NT 4.0 Host 10
 - Windows NT 4.0 Server 22

L

- Language Codes 7, 8, 10, 14, 18, 19, 20, 27
- Locally Shared Printer Connection 5
 - Client Software 13
 - Operating Systems 6
 - Setting Up 5
 - Windows 2000 Hosts 8
 - Windows 95/98 Hosts 6
 - Windows for Workgroups 3.11 Hosts 12
 - Windows NT 4.0 Hosts 10
- LPT1
 - Windows 2000 8
 - Windows 95/98 7
 - Windows NT 10

N

- Network Connection 1
 - Client Server 1, 21
 - Local 1, 5
 - Peer-to-Peer 1, 17
- Novell Netware 1, 21, 23

O

- Operating Systems
 - Client Server Connection 21
 - Local Printer Connection 6
 - Peer-to-Peer Connection 18

P

- Paper, loading 4
- Parallel Cable, connecting 2
- Peer-to-Peer Connection 17
 - Client Software 18
 - Operating Systems 18
 - Setting Up 17
- Point and Print Installation
 - Windows 95/98/2000 13
 - Windows NT 4.0 13
- Print Cartridges 4
- Print Server, *see* HP JetDirect Print Server
- Printer
 - Properties 25
 - Setup Tab 25
 - Software, using 25
- Printer Software, *see* Installing Printer Software
- Properties, Printer 25

S

- Setting Up Your Printer 2
 - Locally Shared 5

- Netware Client Server 23
- Peer-to-Peer 17
- Windows 2000/NT 4.0 Client Server 22
- Sharing Your Printer 1
 - Locally 1, 5
 - Windows 2000 Host 9
 - Windows 95/98 Host 6, 7
 - Windows for Workgroups 3.11 Host 12
 - Windows NT 4.0 Host 10

T

- Toolbox 25, 26

W

- Windows 2000
 - Installing Client Software 13, 15, 19
 - Installing Host Software 8
 - Installing Server Software 22
- Windows 95/98
 - Installing Client Software 13, 14, 18
 - Installing Host Software 7
 - Preparing Your Computer to Share Your Printer 6
 - Sharing Your Printer 7
- Windows for Workgroups 3.11
 - Installing Client Software 16
 - Installing Host Software 12
 - Sharing Your Printer 12
- Windows NT 4.0
 - Installing Client Software 13, 15, 20
 - Installing Host Software 10
 - Installing Server Software 22
- Windows Terminal Server 21