

quick help toc

- **learn to print**
- **printing on paper and other media**
- **special features**
- **product maintenance**
- **solve a problem**
- **product specifications**

quick help

hp deskjet 995c series

table of contents

learn to print	1
introducing the hp deskjet 995c series printer	2
terms and conventions	3
notices and acknowledgments	5
learning about printer features	6
using paper trays	10
setting printing margins	12
printing with the hp deskjet printer	13
using the taskbar icon	15
printing on paper and other media	19
envelopes	20
transparencies	24
labels	26
business cards, index cards, and other small media	28
photographs	30
greeting cards	33
posters	36
banners	38
iron-on transfers	41
manual two-sided printing	43
special features	47
Bluetooth wireless communications feature	48
infrared printing feature	49
automatic two-sided printing module	55
automatic paper-type sensor	58

product maintenance 61

print cartridge status light 62
replacing print cartridges 65
automatically cleaning print cartridges 68
manually cleaning print cartridges 69
cleaning the printer case. 72
refilling print cartridges. 73
maintaining print cartridges 74
print cartridge part numbers 75
the hp deskjet toolbox 76

solve a problem 77

printer lights are flashing 78
printer is not printing 80
printer is too slow 84
problems with printouts. 87
problems with the infrared printing feature 91
problems with the automatic two-sided printing module 93
problems with the automatic paper-type sensor 99
problems with the Bluetooth wireless communications feature 101

product specifications 103

product specifications for the hp deskjet 995c series printer 104
Bluetooth wireless communications feature specifications 109
infrared printing specifications. 110
automatic two-sided printing module specifications 111
minimum printing margins. 114
system requirements 116

index. 117

learn to print

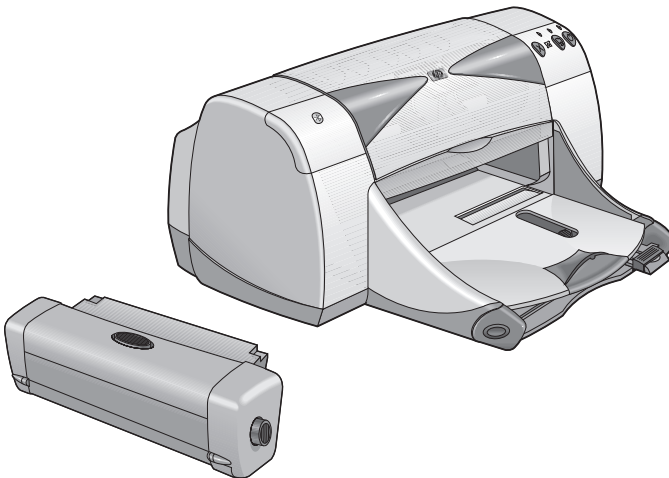
- **introducing the hp deskjet 995c series printer**
- **terms and conventions**
- **notices and acknowledgments**
- **learning about printer features**
- **using paper trays**
- **setting printing margins**
- **printing with the hp deskjet printer**
- **using the taskbar icon**

introducing the hp deskjet 995c series printer

Congratulations! You have purchased an HP Deskjet printer which is equipped with several new features:

- Advanced Bluetooth™ wireless communications feature allows you to print with a wide range of productivity tools without a cable connection
- Infrared printing feature allows you to print information from devices other than your desktop computer
- Increased print speeds up to 17 pages per minute for black text and 13 pages per minute for text containing color graphics
- Greater flexibility in printing two-sided documents using the Automatic Two-Sided Printing Module
- Better print performance using the Automatic Paper-Type Sensor
- Excellent photo quality through HP's PhotoREt III, ColorSmart III printing technology

HP Deskjet printers are designed to help you get the best results for your printing needs. Read about these and other features in the following sections.



terms and conventions

The following terms and word conventions are used in *quick help*.

terms

The HP Deskjet 995c series printers are referred to as **HP Deskjet 9xx** or **HP Deskjet**.

symbols

The > symbol guides you through a series of software steps.
For example:

Click **Start** > **Programs** > **hp deskjet 9xx series** > **hp deskjet 9xx series Toolbox** to open the HP Deskjet Toolbox.

cautions and warnings

A **Caution** indicates possible damage to the HP Deskjet printer or to other equipment. For example:

Caution! Do not touch the print cartridge ink nozzles or copper contacts. Touching these parts will result in clogs, ink failure, and bad electrical connections.

A **Warning** indicates possible harm to yourself or to others.
For example:



Warning! Keep print cartridges out of the reach of children.

icons

A **Note** icon indicates that additional information is provided. For example:



For best results use HP products.

A **Mouse** icon indicates that additional information is available through the **What's This?** help feature.



To find more information about options on each tab screen, point to an option and click the right mouse button to display the **What's This?** dialog box. Click **What's This?** to view more information about the selected option.

notices and acknowledgments

hewlett-packard company notices

The information contained in this document is subject to change without notice.

Hewlett-Packard (HP) makes no warranty of any kind with regard to this material including, but not limited to, the implied warranties of merchantability and fitness for a particular purpose.

Hewlett-Packard shall not be liable for any errors or for incidental or consequential damages in connection with the furnishing, performance, or use of this material.

All rights reserved. Reproduction, adaptation, or translation of this material is prohibited without prior written permission of Hewlett-Packard, except as allowed under copyright laws.

acknowledgments

Microsoft, MS, MS-DOS, and Windows are registered trademarks of Microsoft Corporation.

Bluetooth trademarks are owned by Telefonaktiebolaget L M Ericsson, Sweden.

Pentium is a U.S. registered trademark of Intel Corporation.

TrueType is a U.S. trademark of Apple Computer, Inc.

Adobe and Acrobat are trademarks of Adobe Systems Incorporated.

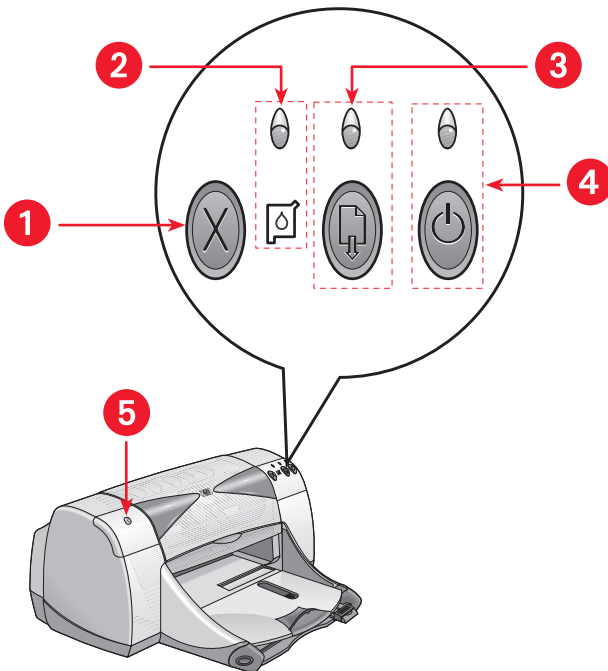
Palm, Palm III, Palm V, and Palm VII are trademarks of Palm, Inc.

Copyright 2001 Hewlett-Packard Company

learning about printer features

buttons and lights

The HP Deskjet printer buttons let you turn the printer on and off, cancel a print job, or resume printing. The lights give you visual cues about the state of the printer.



1. Cancel button
2. Print Cartridge Status symbol and light
3. Resume button and light
4. Power button and light
5. Bluetooth wireless connection status light

cancel button

Pressing this button cancels the current print job.

print cartridge status symbol and light

The light above the Print Cartridge Status symbol flashes when you need to check the status of the print cartridges.

resume button and light

The light above the Resume button flashes when an action is required such as loading paper or clearing a paper jam. When the problem is fixed, press the Resume button to continue printing.

power button and light

The Power button turns the printer on and off. It takes approximately five seconds for the printer to turn on after pressing the Power button. The green light above the Power button flashes when printing is in progress.

Caution! Always use the Power button on the front of the printer to turn the printer on and off. Using a power strip, surge protector, or a wall-mounted switch to turn the printer on and off may cause premature printer failure.

Bluetooth wireless connection status light

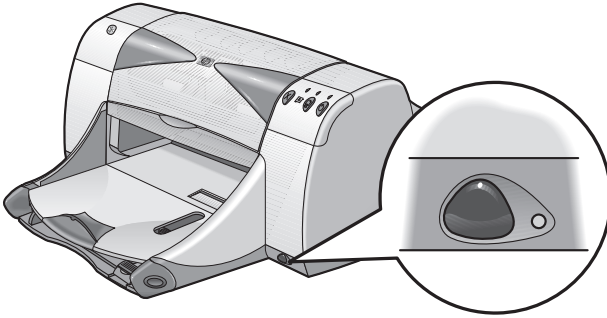
For more information about your printer's Bluetooth wireless communications feature, visit HP's Website at <http://www.hp.com>. Click **drivers**, type **995c** in the **enter product name and number** box, and then press **Enter**.

paper trays

The printer has an In tray and an Out tray. Place paper or other media in the In tray for printing. Printed pages are deposited in the Out tray.

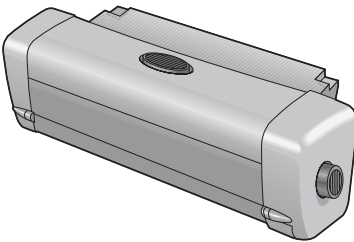
infrared lens

The HP Deskjet printer has a special Infrared (Ir) lens. The Infrared lens allows printing from an infrared sending device such as a Palm Pilot, laptop, or notebook computer.



automatic two-sided printing module

The Automatic Two-Sided Printing Module is a special hardware feature that enables the printer to automatically print on both sides of the page. If this feature is not included with your printer, it can be purchased separately.



manual two-sided printing

Manual Two-Sided Printing is a feature that enables the printer to print both sides of a page using the Rear Access Door.

automatic paper-type sensor

The Automatic Paper-Type Sensor automatically determines the correct paper type for most paper or media placed in the printer's In tray. This feature, particularly when used with HP paper and media, assists in obtaining the best printing results. The feature can be used with both HP and non-HP media; however, it is optimized for HP media. Because Automatic is the default printer setting, the printer is able to quickly select the appropriate paper type.

Bluetooth wireless communications

The HP Deskjet printer is equipped with Bluetooth wireless technology which allows the printer to interact with a range of productivity tools without the need for a cable connection.

For more information about your printer's Bluetooth wireless communications feature, visit HP's Website at <http://www.hp.com>. Click **drivers**, type **995c** in the **enter product name and number** box, and then press **Enter**.

See also:

infrared printing feature

automatic two-sided printing module

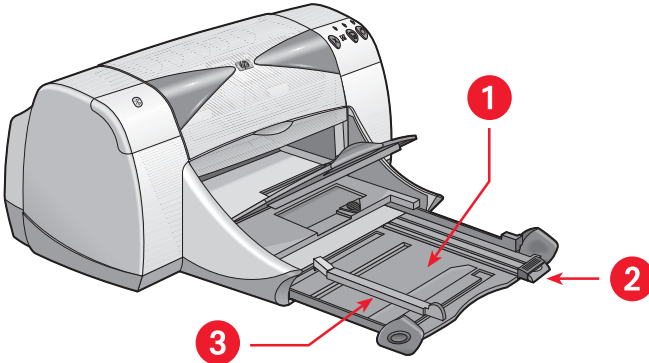
manual two-sided printing

automatic paper-type sensor

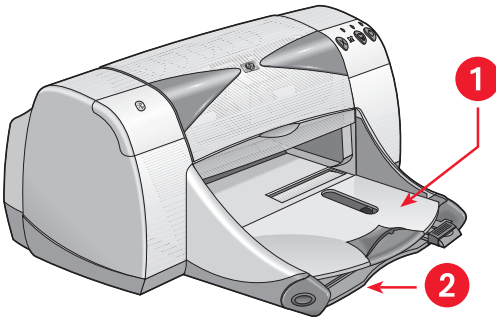
using paper trays

in tray

The In tray holds paper or other media to be printed.



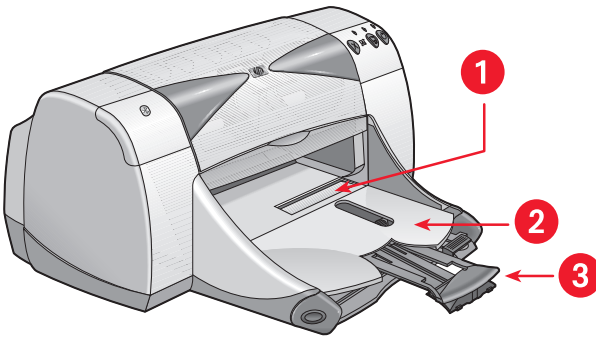
1. In tray pulled out 2. Paper length guide 3. Paper width guide



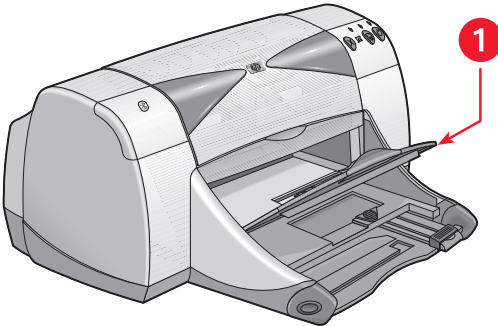
1. Out tray 2. In tray pushed in

out tray

Change the position of the Out tray for different printing needs.



1. Single envelope slot 2. Out tray down 3. Out tray extension



1. Out tray up

Out tray down - Leave the tray in the down position for most types of printing and single envelope printing.

Out tray extension - Pull the tray extension out when printing a large number of pages. Also extend the tray when you are printing in draft mode to prevent the paper from falling out of the tray. When the print job finishes, push the tray extension back into its storage slot.

Out tray up - Place the tray in the up position to properly load banner paper. It must remain in the up position to print banners.



Do not use the Out tray extension with legal-sized paper. It may cause a paper jam.

setting printing margins

The printer cannot print outside a designated area of the page so your document content must be contained within the printable area. Follow these instructions to set printing margins:

1. Open the file you want to print.
2. Use one of the following methods to display the hp deskjet 9xx series screen:
 - Click **File** > **Print**, then select **Properties**.
 - Click **File** > **Print Setup**, then select **Properties**.
 - Click **File** > **Print** > **Setup**, then select **Properties**.

The option selected varies depending on the software program being used.

The hp deskjet 9xx series screen appears displaying three tab options: Setup, Features, and Advanced.

3. Select the **Setup** tab, then select **User Defined Paper Size** in the Paper Size option.

The User Defined Paper Size dialog box appears.

4. Select the appropriate width and length settings.
Paper width must be between 77 and 215 mm (3 x 8.5 in) and paper length must be between 127 and 356 mm (5 x 14 in).
5. Click **OK** to return to the Setup screen.
6. Click **Apply**, then click **OK** to accept the new settings.
7. Click **OK** to print.

See also:

minimum printing margins

printing with the hp deskjet printer

The printer is controlled by software installed on the computer. The printer software, also called a printer driver, provides dialog boxes to communicate print requests to the printer.

printing in Windows 95, 98, Me, 2000, and NT 4.0

Follow these instructions to print in Windows 95, 98, Me, 2000, and NT 4.0:

1. Open the file you want to print.
2. Use one of the following methods to display the hp deskjet 9xx series screen:
 - Click **File > Print**, then select **Properties**.
 - Click **File > Print Setup**, then select **Properties**.
 - Click **File > Print > Setup**, then select **Properties**.

The option selected varies depending on the software program you are using.

The hp deskjet 9xx series screen appears displaying three tab options: Setup, Features, and Advanced.

3. Select the **Setup** tab to choose print quality options, paper type, paper size, and photo paper printing.
4. Select the **Features** tab to choose page orientation, two-sided printing, multiple pages per sheet, and poster printing.

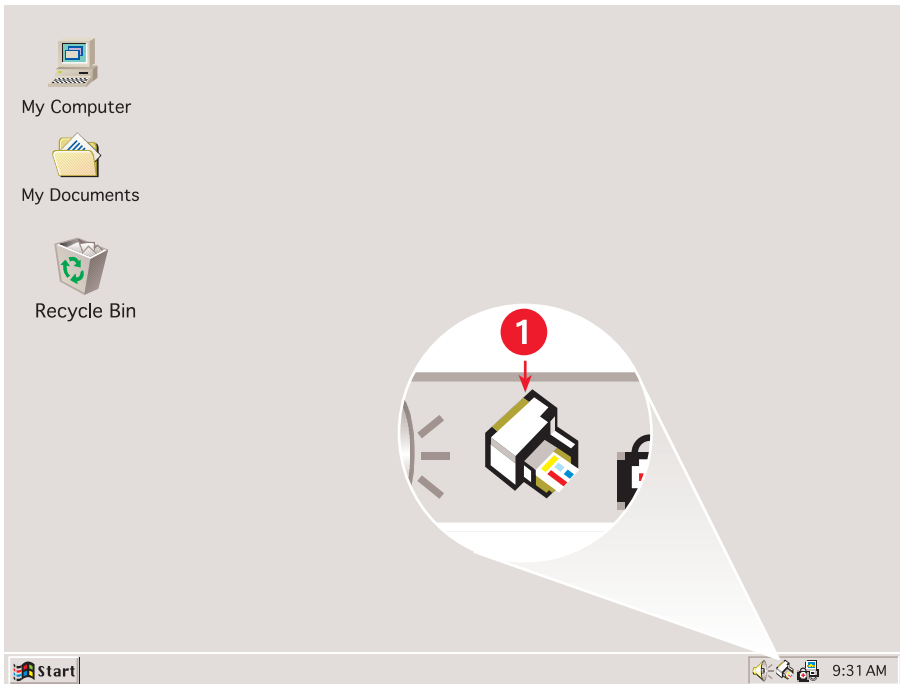
5. Select the **Advanced** tab to choose color options for text, ink volume, print speed (Low Memory Mode), and to make color and contrast adjustments.
6. Click **OK** to return to the Print or Print Setup screen.
7. Click **OK** to print.



To find more information about the options on each tab screen, point to an option and click the right mouse button to display the **What's This?** dialog box. Select **What's This?** to view more information about the selected option.

using the taskbar icon

The Printer Settings taskbar icon allows you to determine the status of the print cartridges and to adjust print settings such as default print quality and automatic two-sided printing.



1. Printer Settings taskbar icon

opening the printer properties dialog box

1. Double-click the **Printer Settings** taskbar icon.
The Printer Properties dialog box appears.
2. Select the available print options in the hp deskjet 9xx series screen.
3. Click **OK**.

locating the warning message indicator

The Printer Settings taskbar icon appears at the end of the taskbar. The color and appearance of the icon indicate the status of warning messages.

- When the icon is blinking and outlined in yellow, unread warning messages have been issued.
- When the icon is no longer blinking but still outlined in yellow, previously read warning messages are pending.
- When the icon is no longer outlined in yellow, warning issues are resolved.

displaying print cartridge warning messages

1. Select the **Printer Settings** taskbar icon to open the Default Print Settings dialog box.
2. Click the **Warning Information** button.
The hp deskjet Toolbox is opened.
3. Select the **Warning Information** tab to view warning messages about the print cartridge.
4. Click **Close** in the top right corner of the Toolbox to exit.

changing print options in the default print settings dialog box

1. Click the **Printer Settings** taskbar icon.
The Default Print Settings dialog box appears. It allows you to change the default print quality and turn on automatic two-sided printing.
2. Select the following options:
 - **Print Quality:** **Draft**, **Normal**, or **Best**
 - **Automatic Two-Sided Printing:** If appropriate

3. Click anywhere outside the dialog box.

A dialog box appears advising that the selections made determine what print settings the printer will use when printing. If you don't want to see this dialog box again, select **Don't show me this message again**.

4. Click **OK**.

using printer settings taskbar icon shortcuts

1. Right click the **Printer Settings** taskbar icon.

A shortcut menu appears displaying the names of installed printers. A check mark appears next to the selected printer. You can select another printer from the menu to change the default printer.

2. Choose one of these options:

- **Change Default Print Settings** to open the Default Print Settings dialog box.
- Click **Open Toolbox** to open the hp deskjet Toolbox.
- Click **Exit** to turn off the **Printer Settings** taskbar icon.

See also:

replacing print cartridges

the hp deskjet toolbox

printing on paper and other media

- envelopes
- transparencies
- labels
- business cards, index cards, and other small media
- photographs
- greeting cards
- posters
- banners
- iron-on transfers
- manual two-sided printing

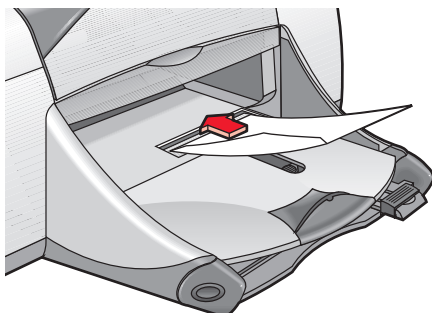
envelopes

Print a single envelope using the envelope slot, or print a stack of envelopes using the In tray.

printing a single envelope

preparing to print

1. Place the envelope—with the flap side on the left and facing up—into the single envelope slot.
2. Push the envelope forward until it stops.



printing an envelope

If your software program includes an envelope-printing feature, do not follow these instructions. Follow the instructions provided by the software program.

1. Open the file you want to print.
2. Use one of the following methods to display the hp deskjet 9xx series screen:
 - Click **File > Print**, then select **Properties**.
 - Click **File > Print Setup**, then select **Properties**.
 - Click **File > Print > Setup**, then select **Properties**.

The option selected varies depending on the software program being used.

The hp deskjet 9xx series screen appears displaying three tab options: Setup, Features, and Advanced.

3. Select the **Setup** tab, then choose the following:
 - **Print Quality:** **Normal**
 - **Paper Type:** **Automatic** or **Plain Paper**
 - **Paper Size:** Appropriate envelope size
4. Select the **Features** tab, then choose the following:
 - **Orientation:** Appropriate envelope orientation
 - **Two-Sided Printing:** Unchecked
5. Click **OK** to return to the Print or Print Setup screen.
6. Click **OK** to print.

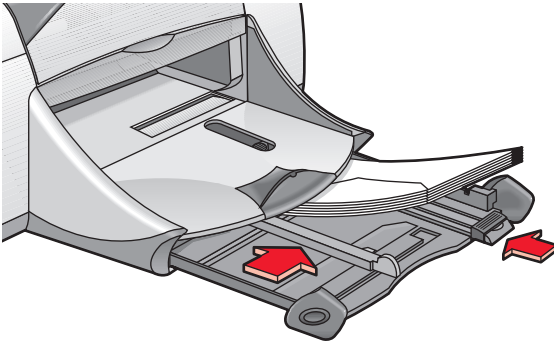
printing guidelines

- Verify that the Out tray is in the down position.
- Avoid using envelopes that have clasps or windows.
- Avoid using envelopes that are shiny or embossed, envelopes with thick, irregular, or curled edges, or envelopes that are wrinkled, torn, or otherwise damaged.

printing multiple envelopes

preparing to print

1. Pull out the In tray.
2. Slide out both paper guides and remove all paper from the tray.
3. Place no more than 15 envelopes—with the flap side on the left and facing up—in the tray.
4. Push the envelopes forward until they stop.
5. Slide the paper guides snugly against the edges of the envelopes. Slide the tray forward until it stops.



printing the envelopes

If your software program includes an envelope-printing feature, do not follow these instructions. Follow the instructions provided by the software program.

1. Open the file you want to print.
2. Use one of the following methods to display the hp deskjet 9xx series screen:
 - Click **File > Print**, then select **Properties**.
 - Click **File > Print Setup**, then select **Properties**.
 - Click **File > Print > Setup**, then select **Properties**.

The option selected varies depending on the software program you are using.

The hp deskjet 9xx series screen appears displaying three tab options: Setup, Features, and Advanced.

3. Select the **Setup** tab, then choose the following:
 - **Print Quality:** **Normal**
 - **Paper Type:** **Automatic** or **Plain Paper**
 - **Paper Size:** Appropriate envelope size
4. Select the **Features** tab, then choose the following:
 - **Orientation:** Appropriate envelope orientation
 - **Two-Sided Printing:** Unchecked
5. Click **OK** to return to the Print or Print Setup screen.
6. Click **OK** to print.

printing guidelines

- Never place more than 15 envelopes in the In tray at one time.
- Align the envelope edges before inserting them.
- Avoid using envelopes that have clasps or windows.
- Avoid using envelopes that are shiny or embossed, envelopes with thick, irregular, or curled edges, or envelopes that are wrinkled, torn, or otherwise damaged.

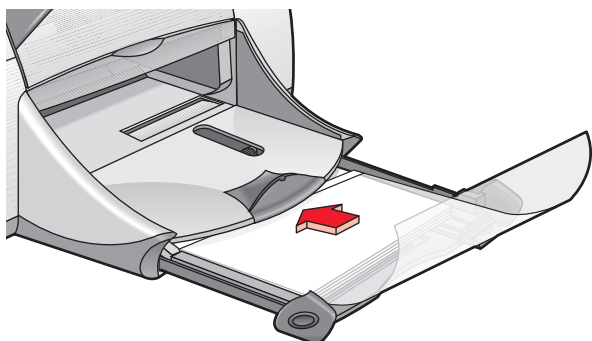


For best results use HP products.

transparencies

preparing to print

1. Pull out the In tray.
2. Slide out both paper guides and remove all paper from the tray.
3. Fan the edges of the transparency sheets to separate them, then align the edges.
4. Place no more than 30 transparency sheets in the tray with the rough side down and the adhesive strip toward the printer.



5. Push the transparencies forward until they stop.
6. Slide the paper guides snugly against the transparency paper and slide the tray forward until it stops.

printing transparencies

1. Open the file you want to print.
2. Use one of the following methods to display the hp deskjet 9xx series screen:
 - Click **File > Print**, then select **Properties**.
 - Click **File > Print Setup**, then select **Properties**.
 - Click **File > Print > Setup**, then select **Properties**.

The option selected varies depending on the software program you are using.

The hp deskjet 9xx series screen appears displaying three tab options: Setup, Features, and Advanced.

3. Select the **Setup** tab, then choose the following:
 - **Print Quality:** **Draft**, **Normal**, or **Best**
 - **Paper Type:** **Automatic**, or appropriate transparency paper
 - **Paper Size:** Appropriate size
4. Select the **Features** tab, then choose the following:
 - **Orientation:** Appropriate orientation
 - **Two-Sided Printing:** Unchecked
5. Click **OK** to return to the Print or Print Setup screen.
6. Click **OK** to print.

The printer waits for transparencies to dry before releasing them to the Out tray.

printing guidelines

For best results use **hp premium inkjet transparency film**.

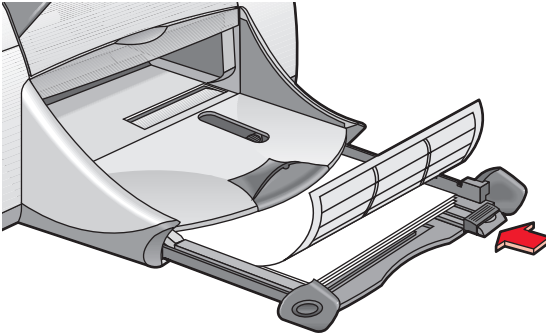


For best results use HP products.

labels

preparing to print

1. Pull out the In tray.
2. Slide out both paper guides and remove all paper from the tray.
3. Fan the edges of the label sheets to separate them, then align the label edges.
4. Load no more than 20 label sheets—label side down—in the tray.
5. Slide the paper guides snugly against the sheets and push in the tray.



printing labels

1. Open the file you want to print.
2. Use one of the following methods to display the hp deskjet 9xx series screen:
 - Click **File** > **Print**, then select **Properties**.
 - Click **File** > **Print Setup**, then select **Properties**.
 - Click **File** > **Print** > **Setup**, then select **Properties**.

The option selected varies depending on the software program you are using.

The hp deskjet 9xx series screen appears displaying three tab options: Setup, Features, and Advanced.

3. Select the **Setup** tab, then choose the following:
 - **Print Quality:** **Normal**
 - **Paper Type:** **Automatic**, or the appropriate paper type
 - **Paper Size:** Choose **A4** or **Letter (8.5 x 11 in)**
4. Select the **Features** tab, then choose the following:
 - **Orientation:** Appropriate orientation
 - **Two-Sided Printing:** Unchecked
5. Click **OK** to return to the Print or Print Setup screen.
6. Click **OK** to print.

printing guidelines

- Use only paper labels that are designed specifically for inkjet printers.
- Never place more than 20 sheets of labels in the In tray at one time.
- Use only full sheets of labels.
- Make sure the sheets are not sticky, wrinkled, or pulling away from the protective backing.
- Do not use plastic or clear labels. The ink will not dry when used with these labels.

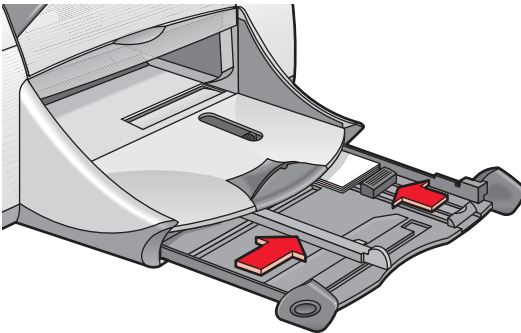


For best results use HP products.

business cards, index cards, and other small media

preparing to print

1. Pull out the In tray, then raise the Out tray.
2. Slide out both paper guides and remove all paper from the tray.
3. Align the media edges.
4. Place no more than 45 cards or other small media in the tray.
5. Push the cards or media forward until they stop, then lower the Out tray.
6. Slide the paper length guides snugly against the edges of the media.
7. Slide the colored fine length guide snugly against the media.
8. Slide the paper width guides snugly against the media.



9. Push in the In tray.

printing business cards, index cards, and other small media

1. Open the file you want to print.
2. Use one of the following methods to display the hp deskjet 9xx series screen:
 - Click **File > Print**, then select **Properties**.
 - Click **File > Print Setup**, then select **Properties**.
 - Click **File > Print > Setup**, then select **Properties**.

The option selected varies depending on the software program you are using.

The hp deskjet 9xx series screen appears displaying three tab options: Setup, Features, and Advanced.

3. Select the **Setup** tab, then choose the following:
 - **Print Quality:** **Draft**, **Normal**, or **Best**
 - **Paper Type:** **Automatic** or the appropriate paper type
 - **Paper Size:** Appropriate size
4. Select the **Features** tab, then choose the following:
 - **Orientation:** Appropriate orientation
 - **Two-Sided Printing:** Unchecked
5. Click **OK** to return to the Print or Print Setup screen.
6. Click **OK** to print.

printing guidelines

If an **out of paper** message appears, verify the media is positioned properly in the In tray.

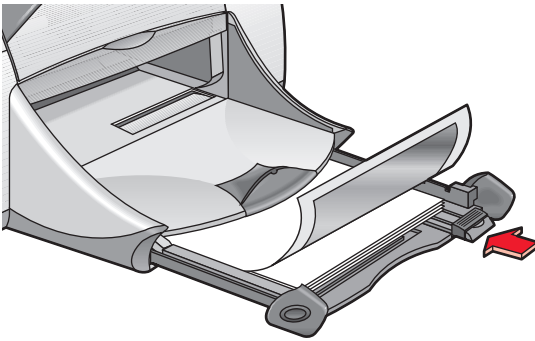


For best results use HP products.

photographs

preparing to print

1. Pull out the In tray.
2. Slide out both paper guides and remove all paper from the tray.
3. Fan the edges of the photo paper to separate them, then align the photo paper edges.
4. Place no more than 20 sheets of photo paper—print side down—in the tray.
5. Slide the paper guides snugly against the edges of the photo paper and slide in the tray.



printing photographs

1. Open the file you want to print.
2. Use one of the following methods to display the hp deskjet 9xx series screen:
 - Click **File > Print**, then select **Properties**.
 - Click **File > Print Setup**, then select **Properties**.
 - Click **File > Print > Setup**, then select **Properties**.

The option selected varies depending on the software program you are using.

The hp deskjet 9xx series screen appears displaying three tab options: Setup, Features, and Advanced.

3. Select the **Setup** tab, then choose the following:
 - **Paper Type:** **Automatic** or the appropriate paper type
 - **Photo Paper Printing:**
 - **PhotoREt** for best print speed and quality, or
 - **2400 x 1200 dpi** for source images greater than 600 dpi (requires 400 MB or more hard disk space and takes longer to print)
 - **Paper Size:** Appropriate paper size
4. Select the **Features** tab, then choose the following:
 - **Orientation:** Appropriate orientation
 - **Two-Sided Printing:** Unchecked
5. Click **OK** to return to the Print or Print Setup screen.
6. Click **OK** to print.

printing guidelines

- Use **hp premium plus photo paper** or **hp premium photo paper** for best results.
- Take a digital picture, scan a photo, or have your local camera shop provide an electronic file of the photo. The photo must be in an electronic format (digital) before it can be printed.
- Use PhotoREt for most photo paper printing.
- Select the paper type then select the appropriate paper size from the pull-down menu.



For best results use HP products.

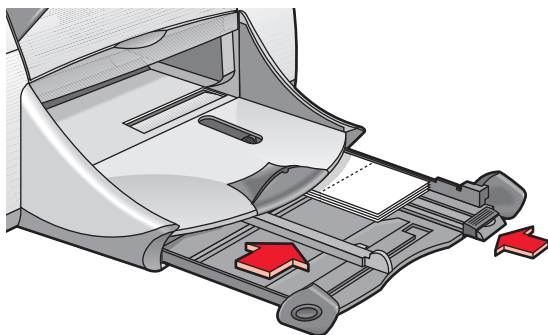
See also:

problems with printouts

greeting cards

preparing to print

1. Pull out the In tray, then raise the Out tray.
2. Slide out both paper guides and remove all paper from the tray.
3. Fan the edges of the greeting cards to separate them.
4. Align the edges of the cards, then place no more than 5 cards in the tray.
5. Push the cards forward until they stop, then lower the Out tray.
6. Slide the paper guides snugly against the edges of the cards and slide in the tray.



printing greeting cards

1. Open the file you want to print.
2. Use one of the following methods to display the hp deskjet 9xx series screen:
 - Click **File > Print**, then select **Properties**.
 - Click **File > Print Setup**, then select **Properties**.
 - Click **File > Print > Setup**, then select **Properties**.

The option selected varies depending on the software program you are using.

The hp deskjet 9xx series screen appears displaying three tab options: Setup, Features, and Advanced.

3. Select the **Setup** tab, then choose the following:
 - **Paper Type:** **Automatic** or the appropriate greeting card type
 - **Print Quality:** **Normal** or **Best**
 - **Paper Size:** Appropriate card size
4. Select the **Features** tab, then choose the following:
 - **Orientation:** Appropriate orientation
 - **Two-Sided Printing:** If appropriate
5. Click **OK** to return to the Print or Print Setup screen.
6. Click **OK** to print.

printing guidelines

- Unfold pre-folded cards, then place them in the In tray.
- If an **out of paper** message appears, verify the media is positioned properly in the In tray.



For best results use HP products.

See also:

manual two-sided printing

posters

preparing to print

1. Pull out the In tray.
2. Slide out both paper guides and remove all paper from the tray.
3. Fan the edges of the sheets to separate them, then align the edges.
4. Place the paper in the tray.
5. Slide the paper guides snugly against the paper and slide in the tray.

printing posters

1. Open the file you want to print.
2. Use one of the following methods to display the hp deskjet 9xx series screen:
 - Click **File > Print**, then select **Properties**.
 - Click **File > Print Setup**, then select **Properties**.
 - Click **File > Print > Setup**, then select **Properties**.

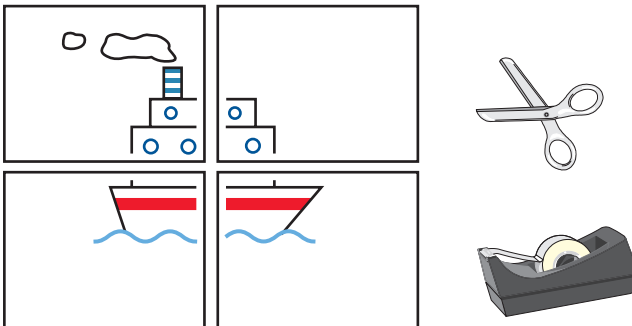
The option selected varies depending on the software program you are using.

The hp deskjet 9xx series screen appears displaying three tab options: Setup, Features, and Advanced.

3. Select the **Setup** tab, then choose the following:
 - **Paper Type:** **Automatic** or **Plain Paper**
 - **Print Quality:** **Normal**
 - **Paper Size:** Appropriate size
4. Select the **Features** tab, then choose the following:
 - **Orientation:** Appropriate orientation
 - **Poster Printing:** Select this option then select **2x2**, **3x3**, or **4x4**
 - **Two-Sided Printing:** Unchecked
5. Click **OK** to return to the Print or Print Setup screen.
6. Click **OK** to print.

printing guidelines

Trim the edges on the sheets and tape the sheets together after printing.

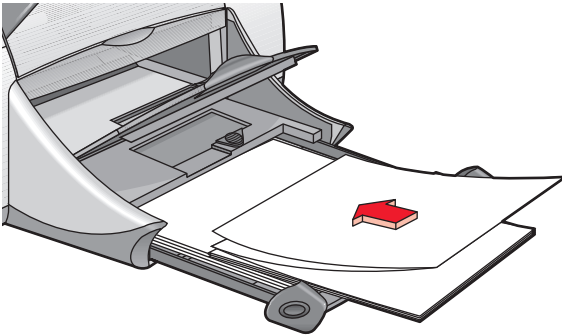


For best results use HP products.

banners

preparing to print

1. Pull out the In tray.
2. Slide out both paper guides and remove all paper from the tray.
3. Raise the Out tray and slide the paper guides snugly against the paper. Leave the Out tray up.
4. Select up to 20 sheets of banner paper. Remove and discard any perforated strips.
5. Place the banner paper in the In tray with the unattached edge of the paper facing the printer.
6. Push in the tray.



printing banners

1. Open the file you want to print.
2. Use one of the following methods to display the hp deskjet 9xx series screen:
 - Click **File > Print**, then select **Properties**.
 - Click **File > Print Setup**, then select **Properties**.
 - Click **File > Print > Setup**, then select **Properties**.

The option selected varies depending on the software program you are using.

The hp deskjet 9xx series screen appears displaying three tab options: Setup, Features, and Advanced.

3. Select the **Setup** tab, then choose the following:
 - **Banner Printing:** Select this box
 - **Paper Type:** **hp banner paper**
 - **Print Quality:** **Normal**
 - **Paper Size:** **Banner [A4 (210 x 297 mm)]** or **Banner [Letter (8.5 x 11 in)]**
4. Select the **Features** tab, then choose the following:
 - **Orientation:** Appropriate orientation
 - **Two-Sided Printing:** Unchecked
5. Click **OK** to return to the Print or Print Setup screen.
6. Click **OK** to print.

printing guidelines

- Use **hp banner paper** for best results.
- See the HP Deskjet 9xx Series Printer *release notes* for specific printing information.



For best results use HP products.

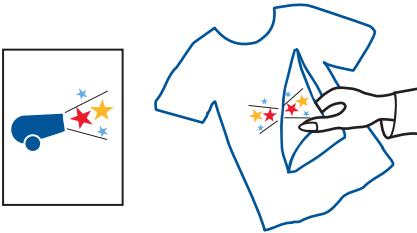
See *also*:

problems with printouts

iron-on transfers

preparing to print

1. Pull out the In tray.
2. Slide out both paper guides and remove all paper from the tray.
3. Fan the edges of the iron-on transfer paper to separate them, then align the edges.
4. Place the iron-on transfer paper in the tray with the printable side down.
5. Slide the paper guides snugly against the transfer paper and push in the tray.



printing iron-on transfers

1. Open the file you want to print.
2. Use one of the following methods to display the hp deskjet 9xx series screen:
 - Click **File** > **Print**, then select **Properties**.
 - Click **File** > **Print Setup**, then select **Properties**.
 - Click **File** > **Print** > **Setup**, then select **Properties**.

The option selected varies depending on the software program you are using.

The hp deskjet 9xx series screen appears displaying three tab options: Setup, Features, and Advanced.

3. Select the **Setup** tab, then choose the following:
 - **Paper type:** **Automatic** or **hp iron-on t-shirt transfers**
 - **Print Quality:** **Normal** or **Best**
 - **Paper Size:** **A4 (210 x 297 mm)** or **Letter (8.5 x 11 in)**
4. Select the **Features** tab, then choose the following:
 - **Orientation:** **Mirror Image**
 - **Two-Sided Printing:** Unchecked
5. Click **OK** to return to the Print or Print Setup screen.
6. Click **OK** to print.

printing guidelines

- Remember that when printing a document with a mirror-image, the text and pictures are horizontally reversed from what you see on the computer screen.
- Use **hp iron-on t-shirt transfer paper** for best results.



For best results use HP products.

manual two-sided printing

preparing to print

1. Pull out the In tray.
2. Remove all paper from the Out tray.
3. Place paper in the In tray.
4. Slide the paper guides snugly against the edges of the paper.
5. Push in the tray.

printing manually

1. Open the file you want to print.
2. Use one of the following methods to display the hp deskjet 9xx series screen:
 - Click **File > Print**, then select **Properties**.
 - Click **File > Print Setup**, then select **Properties**.
 - Click **File > Print > Setup**, then select **Properties**.

The option selected varies depending on the software program you are using.

The hp deskjet 9xx series screen appears displaying three tab options: Setup, Features, and Advanced.

3. Select the **Setup** tab, then choose the following:
 - **Print Quality**: Appropriate print quality
 - **Paper Type**: **Automatic** or appropriate paper type
 - **Paper Size**: Appropriate size

4. Select the **Features** tab, then choose the following:

- **Orientation:** Appropriate orientation
- **Two-Sided Printing:** Check this box

The Two-Sided Printing Margin dialog box appears.

a. Select the appropriate page content option, then click **OK** to return to the Features screen.

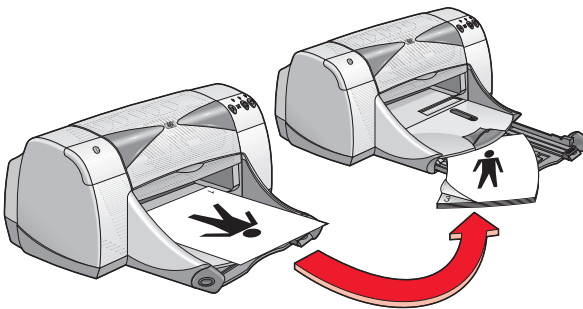
b. Select **Book** or **Tablet**.

c. Deselect the **Automatic** option.

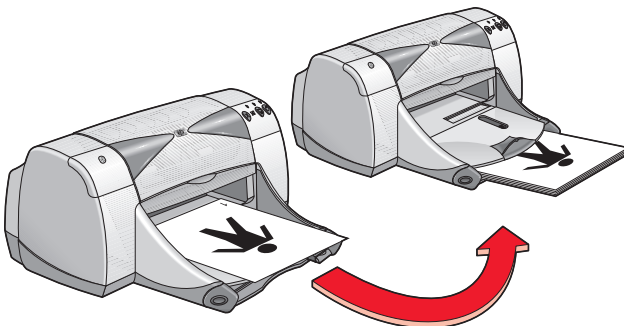
5. Click **OK** to return to the Print or Print Setup screen.

6. Click **OK** to print.

Follow the instructions displayed on your screen when prompted to reload the paper.



Book binding



Tablet binding

7. Click **Continue** when the paper is properly reloaded.

printing guidelines

- Print two-sided documents using one of the following methods:
 - Use the Rear Access Door for manual two-sided printing.
 - Use the Automatic Two-Sided Printing Module.
- The printer automatically prints odd-numbered pages first. Once the odd-numbered pages are printed, a message appears prompting you to reload the paper so that the even-numbered pages can be printed.



For best results use HP products.

See also:

automatic two-sided printing module

special features

- **Bluetooth wireless communications feature**
- **infrared printing feature**
- **automatic two-sided printing module**
- **automatic paper-type sensor**

Bluetooth wireless communications feature

For more information about your printer's Bluetooth wireless communications feature, visit HP's Website at <http://www.hp.com>. Click **drivers**, type **995c** in the **enter product name and number** box, and then press **Enter**.

infrared printing feature

infrared printing with a laptop or notebook computer

setting up the laptop or notebook in Windows 98

If the operating system you are using is Windows 98, the computer's BIOS settings may need to be reconfigured for infrared printing. Use one of the following methods to locate instructions for configuring the laptop or notebook:

- See the instructions that came with the laptop or notebook.
 - Log onto the laptop manufacturer's Website or contact its customer support.
 - Log onto the Infrared Data Association (IrDA) website at: <http://www.irda.org>.
1. Click **Start** > **Settings** > **Control Panel**.
The Control Panel screen appears.
 2. Do one of the following:
 - Double-click the **Infrared** icon.
 - Click the **Infrared** icon at the end of the taskbar if it is displayed.
 3. Select the **Options** tab.
 4. Select the **Enable infrared communications** box.
 5. Click **OK**.

printing in Windows 98

1. Locate the infrared lens on the laptop or notebook.
See the computer's operating manual for the location of the infrared lens.
2. Align the computer's infrared lens with the printer's infrared lens.
The computer should be positioned no more than one meter (three feet) from the printer and within a 30-degree total angle from the printer's infrared lens.

3. Remove any obstacles between the two devices.
The infrared light begins to blink when the devices are correctly aligned.
4. Send a file to print following normal print procedures.
The infrared light on the printer displays a solid beam during the transfer process. When printing is complete, the light begins to blink.
If the Infrared Monitor is displayed, the Status tab indicates the progress of the infrared activity as the printer receives and prints the file.



If the laptop or notebook is moved out of range of the printer's infrared lens at any time during the printing process, the infrared light turns off and the printer stops printing. Realign the devices within 3-30 seconds, and the print job will resume.

selecting the printer in Windows 2000

1. Click **Start** > **Settings** > **Printers** to open the Printers window.
2. Right-click **hp deskjet 9xx series printer** to view the shortcut menu.
3. Select **Properties**.
4. Select the **Ports** tab.
5. Select **IR Local Port**.
6. Click **OK**.

printing in Windows 2000

1. Locate the infrared lens on the laptop or notebook.
See the computer's operating manual for the location of the infrared lens.
2. Align the computer's infrared lens with the printer's infrared lens.
The computer should be positioned no more than one meter (three feet) from the printer and within a 30-degree total angle from the printer's infrared lens.
3. Remove any obstacles between the two devices.
The infrared light begins to blink when the devices are correctly aligned.

4. Send a file to print following normal print procedures.

The infrared light on the printer displays a solid beam during the transfer process. When printing is complete, the light begins to blink.

If the Infrared Monitor is displayed, the Status tab indicates the progress of the infrared activity as the printer receives and prints the file.



If the laptop or notebook is moved out of range of the printer's infrared lens at any time during the printing process, the infrared light turns off and the printer stops printing. Realign the devices within 3-30 seconds, and the print job will resume.

displaying the infrared icon on the taskbar

The infrared icon appears on the taskbar after you configure your laptop or notebook for infrared printing. If the icon does not appear, follow these instructions to turn it on:

1. Click **Start > Settings > Control Panel**.
2. Double-click the **Infrared** icon.
The Infrared Monitor dialog box is displayed.
3. Select the **Preferences** tab.
4. Click the **Display the Infrared Monitor icon on the taskbar** box.
5. Click **OK**.

infrared printing with a Palm Pilot

1. Locate the infrared lens on the Palm Pilot.
2. Align the Palm Pilot's infrared lens with the printer's infrared lens.
The Palm Pilot should be positioned no more than one meter (three feet) from the printer and within a 30-degree total angle from the printer's infrared lens.
3. Remove any obstacles between the Palm Pilot and printer.

4. Do one of the following:

- Use the **Beam** command to print a single calendar appointment, one or more business cards, to-do list items, or memos.
- Use the **Print** command to send one or more items such as calendar appointments, email messages, phone lists, or to-do lists to the printer.

The infrared light projects a solid beam on the printer during the information transfer process. When the information transfer is complete, the light turns off.



Printing, rather than beaming, requires a printing program which enhances the appearance of your printed information. Follow the specific procedures provided by the printing program when printing.

infrared printing with an hp photosmart digital camera

1. Locate the infrared lens on the digital camera.

See the camera's operating manual for the location of the infrared lens.

2. Align the camera's infrared lens with the printer's infrared lens.

The camera should be positioned no more than one meter (three feet) from the printer and within a 30-degree total angle from the printer's infrared lens.

3. Remove any obstacles between the camera and printer.

4. Send a photo to print following normal sending or sharing procedures of the camera. See the camera's operating manual for instructions.

The infrared light projects a solid beam on the printer during the information transfer process. When the information transfer is completed, the light turns off.

infrared printing with a Windows CE device

1. Locate the infrared lens on the Windows CE device.
See the device's operating manual for the location of the infrared lens.
2. Align the infrared lens on the Windows CE device with the printer's infrared lens.
The Windows CE device should be positioned no more than one meter (three feet) from the printer and within a 30-degree total angle from the printer's infrared lens.
3. Remove any obstacles between the CE device and the printer.
4. Open the file you want to print.
5. Use one of the following methods to display the hp deskjet 9xx series screen:
 - Click **File > Print**, then select **Properties**.
 - Click **File > Print Setup**, then select **Properties**.
 - Click **File > Print > Setup**, then select **Properties**.

The option selected varies depending on the software program you are using.

The hp deskjet 9xx series screen appears displaying three tab options: Setup, Features, and Advanced.

6. Choose one of the following options in the Printer box:

- **PCL inkjet**
- **JetSend**

7. Select **IRDA** in the Port box.

8. Click **OK**.

The infrared light projects a solid beam on the printer during the information transfer process. When information transfer is complete, the light turns off.

For information on using Calibre's PrintConnect Suite with your printer, click [here](#).

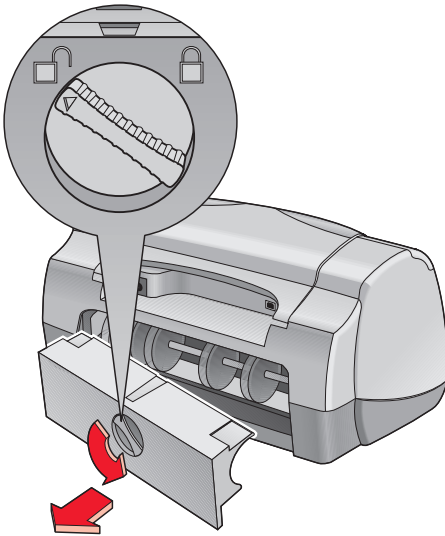
For information on using IS/Complete's IrPrint with your printer, click [here](#).

For information on using HP's JetSend with your printer, click [here](#).

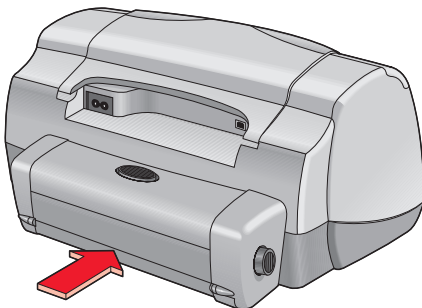
automatic two-sided printing module

installing the automatic two-sided printing module

1. Turn the latch counter-clockwise on the printer's Rear Access Door and remove the door.



2. Insert the module in the back of the printer.



preparing to print

1. Pull out the In tray.
2. Slide out both paper guides and remove all paper from the tray.
3. Place one of the following paper types in the tray:
 - hp plain paper
 - hp bright white inkjet paper
 - hp premium inkjet heavyweight paper
 - hp felt-textured greeting card paper
 - hp professional brochure paper, glossy or matte
 - hp photo quality inkjet paper, semi-gloss or matte



Not all paper types, weights, and sizes can be used with the Automatic Two-Sided Printing Module. Use one of the paper types listed above when using the Automatic Two-Sided Printing Module.

4. Push the paper forward until it stops.
5. Slide the paper guides snugly against the edges of the paper and push in the In tray.

printing with the automatic two-sided printing module

1. Open the file you want to print.
2. Use one of the following methods to display the hp deskjet 9xx series screen:
 - Click **File > Print**, then select **Properties**.
 - Click **File > Print Setup**, then select **Properties**.
 - Click **File > Print > Setup**, then select **Properties**.

The option selected varies depending on the software program you are using.

The hp deskjet 9xx series screen appears displaying three tab options: Setup, Features, and Advanced.

3. Select the **Features** tab, then choose the following:
 - **Orientation**: Appropriate orientation
 - **Two-Sided Printing**: Check this boxThe Two-Sided Printing Margin dialog box appears.
 - a. Select the appropriate page content option, then click **OK** to return to the Features screen.
 - b. Select **Book** or **Tablet**.
 - c. Select the **Automatic** option.
4. Click **OK** to return to the Print or Print Setup screen.
5. Click **OK** to print.

The printer pauses while the first side of the printed page dries. Once dry, the other side of the page is printed and released into the Out tray.

See also:

automatic two-sided printing module specifications

automatic paper-type sensor

The Automatic Paper-Type Sensor automatically determines the correct paper type for most paper or media placed in the In tray. This feature, particularly when using HP paper and media, provides the best printing results.

using the automatic paper-type sensor

1. Open the file you want to print.
2. Use one of the following methods to display the hp deskjet 9xx series screen:
 - Click **File** > **Print**, then select **Properties**.
 - Click **File** > **Print Setup**, then select **Properties**.
 - Click **File** > **Print** > **Setup**, then select **Properties**.

The option selected varies depending on the software program you are using.

The hp deskjet 9xx series screen appears displaying three tab options: Setup, Features, and Advanced.

3. Select the **Setup** tab then choose the following:
 - **Print Quality:** Appropriate option
 - **Paper Type:** **Automatic**
 - **Paper Size:** Appropriate size
4. Click **OK** to return to the Print or Print Setup screen.
5. Click **OK** to print.

An blue optical sensor light scans the first page one or more times to determine the best paper type setting. Once determined, the page is printed.



The Automatic Paper-Type Sensor works best with HP media so your printer can quickly select the appropriate paper type.

turning off the automatic paper-type sensor

1. Open the file you want to print.
2. Use one of the following methods to display the hp deskjet 9xx series screen:
 - Click **File > Print**, then select **Properties**.
 - Click **File > Print Setup**, then select **Properties**.
 - Click **File > Print > Setup**, then select **Properties**.

The option selected varies depending on the software program you are using.

The hp deskjet 9xx series screen appears displaying three tab options: Setup, Features, and Advanced.

3. Select the **Setup** tab, then select any paper type *other than Automatic*.
4. Click **OK** to return to the Print or Print Setup screen.
5. Click **OK** to print.

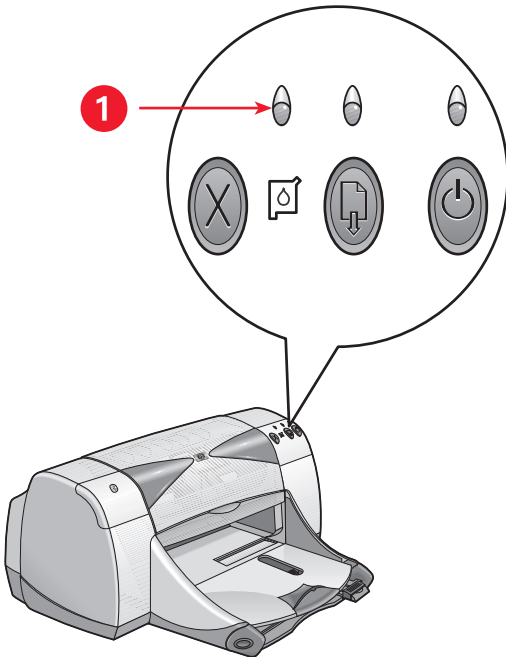
product maintenance

- **print cartridge status light**
- **replacing print cartridges**
- **automatically cleaning print cartridges**
- **manually cleaning print cartridges**
- **cleaning the printer case**
- **refilling print cartridges**
- **maintaining print cartridges**
- **print cartridge part numbers**
- **the hp deskjet toolbox**

print cartridge status light

understanding the print cartridge status light

The Print Cartridge Status light flashes when one or both of the print cartridges are low on ink, improperly installed, or malfunctioning. This light also flashes if the wrong print cartridge type is used.

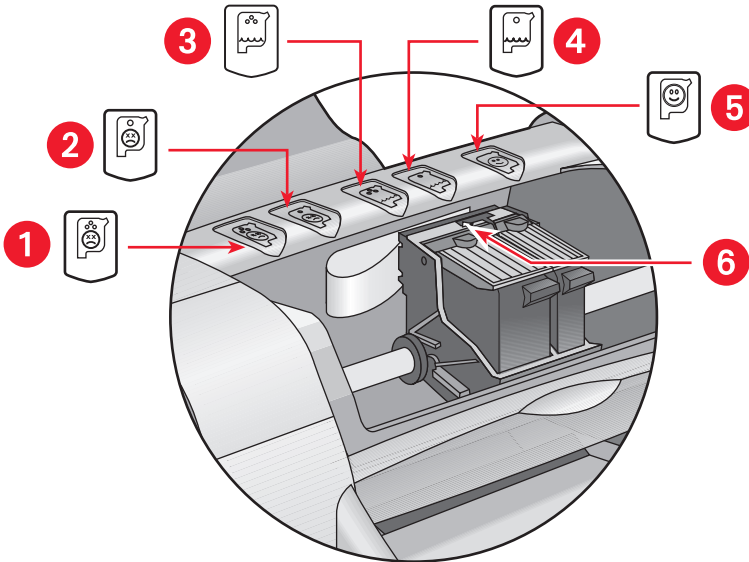


1. Print Cartridge Status light

If the ink level is low in a print cartridge, the Print Cartridge Status light stops flashing when the printer's top cover is opened. If the problem is not related to low ink, the light continues to flash after the cover is opened.

checking the print cartridge status

Open the printer's top cover when the Print Cartridge Status light flashes. The yellow arrow on the print cartridge cradle points to one of five Print Cartridge Status icons revealing the exact nature of the problem.



1. Color cartridge problem icon
2. Black cartridge problem icon
3. Color cartridge low-ink icon
4. Black cartridge low-ink icon
5. Cartridges OK icon
6. Yellow indicator arrow

troubleshooting problems with the color or black print cartridge

If the yellow arrow points to a print cartridge problem icon, the print cartridge is either missing, improperly installed, defective, or is the wrong print cartridge for the printer. To correct the problem:

1. Insert the proper print cartridge if one is missing.
The printer needs both a black print cartridge and a color print cartridge.
2. Remove and reinsert the print cartridge if both print cartridges are installed.

3. Verify that the correct print cartridges are installed if there is still a problem.
4. Replace the cartridges if the problem persists.

solving problems with low ink

If the arrow points to the color or the black low ink icon, replace the relevant print cartridge.

verifying that the problem is solved

If the arrow points to the print cartridge OK icon, both print cartridges are operational and the problem is solved.

replacing print cartridges

Before buying replacement print cartridges, verify the correct part numbers.

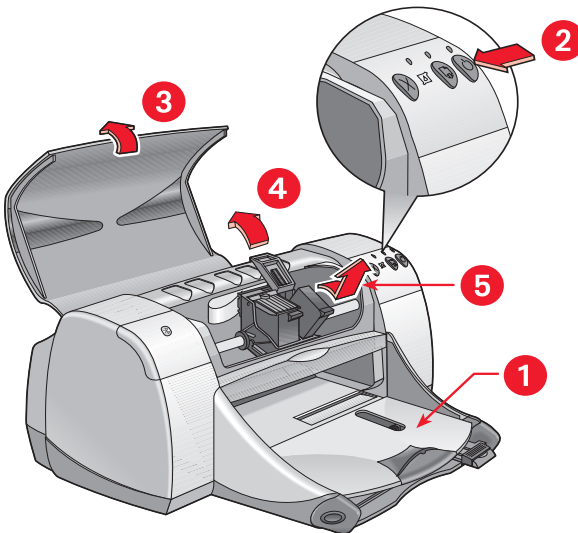
When a print cartridge is empty, leave the empty print cartridge in the print cartridge cradle until it is replaced. The printer requires both print cartridges.



Warning! Keep both new and used print cartridges out of the reach of children.

To replace a print cartridge:

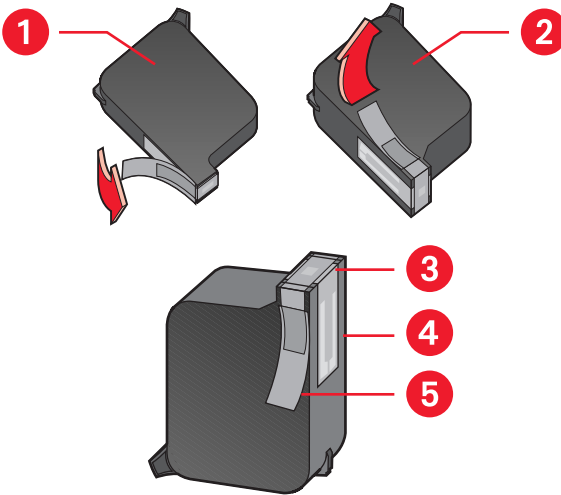
1. Verify that the Out tray is down.
2. Press the **Power** button to turn on the printer.
3. Open the top cover.
The cradle moves to the center of the printer.
4. Raise the cradle latch.
5. Lift the print cartridge out of the print cartridge cradle and discard it.



1. Out tray (in down position)
2. Press Power button
3. Open top cover
4. Raise cradle latch
5. Lift out cartridge

6. Remove the replacement print cartridge from its packaging and carefully remove the protective vinyl tape.

Caution! Do not touch the print cartridge ink nozzles or copper contacts. Touching these parts will result in clogs, ink failure, and bad electrical connections. In addition, do not remove the copper strips. They are required electrical contacts.



1. Black cartridge 2. Color cartridge 3. Ink nozzles 4. Copper contacts—Do not touch or remove the copper contacts 5. Protective vinyl tape—Remove only the protective vinyl tape

7. Insert the print cartridge firmly into the cradle.

8. Secure the cradle latch.

You hear a click when the latch is fully secured.

9. Close the top cover.

- A calibration page prints. The printer generates a calibration page to test print quality each time a print cartridge is installed.
- If you are in the middle of printing and stop to change a print cartridge, the calibration page prints after the print job is complete.

If the Print Cartridge Status light continues to blink after installing a new print cartridge, check the part number on the cartridge to make sure the correct cartridge is installed.

See also:

print cartridge part numbers

automatically cleaning print cartridges

If your printed pages are missing lines or dots, or if they contain ink streaks, the print cartridges need to be cleaned.

Print cartridges are cleaned automatically using the following procedure:

1. Open the hp deskjet toolbox.
2. Select **Clean the Print Cartridges** and follow the on-screen directions.



If you have questions about the cleaning feature, point to the Clean the Print Cartridge option and click the right mouse button to display the **What's This?** dialog box. Click **What's This?** for more information.

If your printouts are still missing lines or dots after cleaning, the ink level may be low in the print cartridge. If so, one or both print cartridges may need to be replaced.

If ink streaks still appear on your printouts after cleaning, the print cartridges and print cartridge cradle may need to be cleaned manually.



Only clean print cartridges when it is necessary. Unnecessary cleaning wastes ink and shortens the life of the cartridge.

See also:

the hp deskjet toolbox
replacing print cartridges
cleaning the printer case

manually cleaning print cartridges

If the printer is used in a dusty environment, a small amount of debris may accumulate inside the case. This debris can include dust, hair, carpet, or clothing fibers. When it gets on the print cartridges and cradle, it can cause ink streaks and smudges on printed pages. Ink streaking is easily corrected by manually cleaning the cartridges and cradle.

gathering cleaning supplies

You will need the following items to clean the print cartridges and cradle:

- Distilled or bottled water. Tap water contains contaminants that damage print cartridges.
- Cotton swabs or other soft, lint-free material that will not stick to the cartridges.

Be careful not to get ink on your hands or clothing as you clean.

preparing to clean

Remove the print cartridges from the printer before cleaning.

1. Press the **Power** button to turn on the printer; raise the top cover. The print cartridges move to the center of the printer.
2. Disconnect the power cord from the back of the printer.
3. Remove the print cartridges and place them on a piece of paper with the ink nozzle plate facing up.

See the illustration in "Cleaning the Print Cartridges and Print Cartridge Cradle" for the location of the ink nozzle plate.

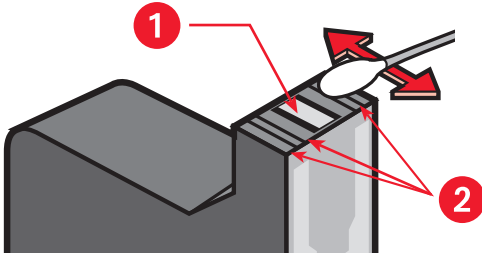
Do not leave the cartridges outside the printer for more than 30 minutes.

Caution! Do not touch the print cartridge ink nozzles or copper contacts. Do not remove the copper strips.

cleaning the print cartridges and print cartridge cradle

1. Dip the end of a clean cotton swab into the distilled water and remove any excess water.
2. Clean the face and edges of the first print cartridge with the swab, as shown in the following illustration.

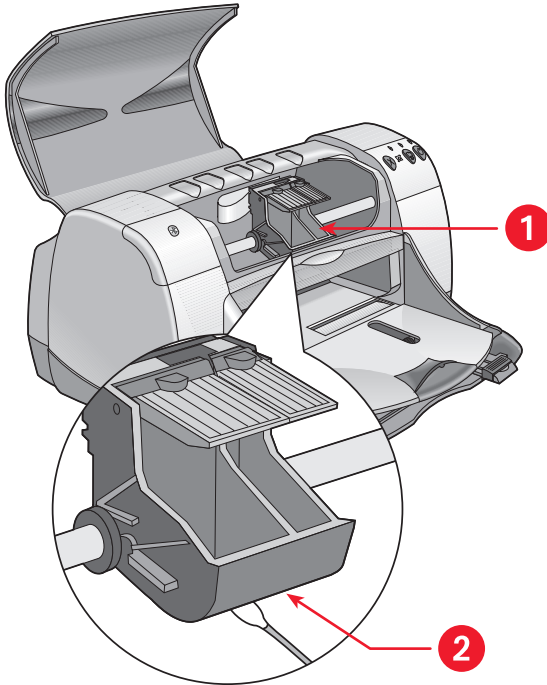
Do Not wipe the nozzle plate.



1. Nozzle plate 2. Clean these areas

3. Inspect the face and edges of the print cartridge for fibers. Repeat steps 1 and 2 above if fibers are still present.
4. Repeat the cleaning process for the other print cartridge.

5. Wipe the underside of the print cartridge cradle walls using clean, moistened cotton swabs.
Repeat this process until no ink residue appears on a clean swab.



1. Print cartridge cradle 2. Cradle wall

6. Reinsert the print cartridges and close the printer's top cover.
7. Reconnect the power cord to the back of the printer.
8. Print a test page from the HP Deskjet Toolbox by selecting **Print a Test Page**.
9. Repeat the cleaning procedure if smeared ink still appears on the printouts.

See also:
the [hp deskjet toolbox](#)

cleaning the printer case

The printer ejects ink onto paper in a fine mist, and small amounts of ink may be deposited on the printer case over time. Follow these guidelines when cleaning the outside of the printer:

- Use a soft damp cloth to remove dust, smudges, stains, and spilled ink from the printer case exterior. Use water only. Do not use household cleaners or detergents.
- Do not clean the printer's interior. Keep all liquids away from the interior.
- Do not lubricate the rod on which the print cartridge cradle moves. It is normal to hear noise as the cradle moves back and forth on the rod when the printer is new. The noise decreases with use.



The printer should be handled and stored in an upright, level position for maximum performance and reliability.

refilling print cartridges

Do not refill HP print cartridges. Refilling print cartridges causes the electronic and mechanical components of the print cartridge to exceed their normal life cycle. It also creates many potential problems, such as:

- **Poor print quality.** Non-HP inks can contain elements that clog the cartridge nozzles and cause inconsistent print quality. Non-HP inks can also contain elements that corrode the cartridges' electrical components, resulting in poor printouts.
- **Potential damage.** Ink from a refilled cartridge can leak onto the electrical components in the printer. This can cause severe printer damage, resulting in downtime and repair costs.

Caution! Damage that results from modifying or refilling HP print cartridges is specifically excluded from the HP printer's warranty coverage.

To get the best performance from your printer, Hewlett-Packard recommends using only genuine factory-filled HP print cartridges.

See also:

print cartridge part numbers

maintaining print cartridges

The following tips will help maintain HP print cartridges and ensure consistent print quality:

- Keep all print cartridges in their sealed packages until they are needed. Print cartridges should be stored at room temperature (60–78 degrees F or 16–27 degrees C).
- If print cartridges have been removed from their sealed packages and not used, store the cartridges in an airtight plastic container. Store print cartridges with the nozzle-side up. Do not allow anything to touch the nozzles.
- If the vinyl tape has been removed from the print cartridge, do not attempt to reattach it. Reattaching the tape will damage the print cartridge.
- Once print cartridges are installed in the printer, leave them in the print cartridge cradle unless they are being manually cleaned. This prevents ink from evaporating or clogging the print cartridges.

Caution! Do not unplug the printer until printing is complete and the print cartridge cradle returns to the home position on the right side of the printer. Print cartridges dry out if not stored in the home position.

print cartridge part numbers

When replacing print cartridges for the HP Deskjet 9xx series printer, buy print cartridges with the following part numbers:

- **Black:** HP 516**45**A Series or HP No. 45
- **Tri-color:** HP C65**78**D Series or HP No. 78
- **Large Tri-color:** HP C65**78**A Series or HP No. 78

the hp deskjet toolbox

Windows 95, 98, Me, 2000, and NT 4.0

The HP Deskjet Toolbox contains a number of useful tools to calibrate the printer, clean the print cartridges, print a test page, and print a diagnostics page.

To open the HP Deskjet Toolbox:

- Click **Start > Programs > hp deskjet 9xx series > hp deskjet 9xx series Toolbox.**

OR

- Right-click the Printer Settings Taskbar icon and select **Open Toolbox.**



To find out more about HP Deskjet Toolbox utilities, open the Toolbox, point to an option, and click the right mouse button to display the **What's This?** dialog box. Click **What's This?** for information about the tool selected.

solve a problem

- printer lights are flashing
- printer is not printing
- printer is too slow
- problems with printouts
- problems with the infrared printing feature
- problems with the automatic two-sided printing module
- problems with the automatic paper-type sensor
- problems with the Bluetooth wireless communications feature

printer lights are flashing

Flashing lights indicate the printer status.

power light

The printer may be receiving data and is preparing to print. The light stops flashing when the printer has finished receiving data.

resume light

printer may be out of paper

1. Place paper in the In tray.
2. Press the **Resume** button on the front of the printer.

a paper jam occurs when the rear access door is used

1. Remove the paper from the In and Out trays.
2. Press the **Resume** button.
If you are printing labels verify that a label did not get stuck while going through the printer.
3. Print the document if the paper jam is cleared.
If the paper jam did not clear, proceed to step 4.
4. Open and remove the Rear Access Door.
5. Remove the paper jam from the printer.
6. Replace and close the Rear Access Door.
7. Press the **Resume** button.

manually printing the first side of a two-sided document

1. Follow the onscreen instructions for inserting the paper to print the second side.
2. Press the **Resume** button.

print cartridge light

- The top cover is open. Close the top cover.
- There may be a problem with one of the print cartridges.

all lights are flashing

The printer may need to be restarted.

1. Press the **Power** button to turn off the printer.
2. Press the **Power** button to turn on the printer.
Proceed to step 3 if the lights continue to flash.
3. Press the **Power** button to turn off the printer.
4. Disconnect the printer from the power source.
5. Reconnect the printer to the power source.
6. Press the **Power** button to turn on the printer.

Bluetooth wireless connection status light

For more information about your printer's Bluetooth wireless communications feature, visit HP's Website at: <http://www.hp.com>. Click **drivers**, type **995c** in the **enter product name and number** box, and then press **Enter**.

See also:

print cartridge status light

*If you continue to have problems, contact **HP Customer Care**.*

printer is not printing

paper does not come out of the printer

Follow these instructions to correct the problem.

check the printer

Verify the following:

1. The printer is connected to the power source.
2. The cable connections are secure.
3. The printer is turned on.
4. The media is correctly placed in the In tray.
5. The printer's top cover is closed.
6. The Rear Access Door is attached.

check the printer lights

1. Lift the printer cover to verify that the print cartridges are properly installed if the Print Cartridge Status light is blinking.
2. If the **Power** light is blinking, the printer is in the process of printing.
3. If the **Resume** light is blinking, press the **Resume** button.

reinstall the printer software

See the *quick start* setup poster for more information.

error messages appear when using a USB connection

the error message "there was an error writing to lpt1" appears

You may not have plugged in the USB cable before installing the software.

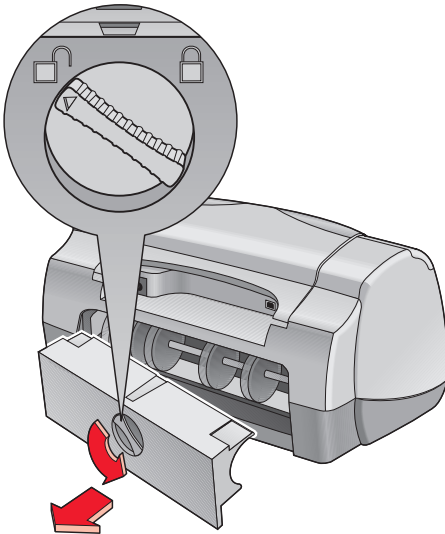
1. Disconnect the USB cable from the printer.
2. Insert the printer software CD into the computer.
3. Click **Start** > **Run**.
4. Browse the CD, select **Setup**, then click **Open**.
The setup.exe file appears in the Open dialog box.
5. Click **OK**.
6. Select the **Remove hp deskjet 9xx series software** option to remove the software.
7. Connect the USB cable to the printer.
The USB installation screen appears.
8. Install the USB software.
See the *quick reference guide* or *quick start setup poster* for more information.

the error message "there was an error writing to <name of USB port>" appears

The printer may not be receiving correct data from the other USB device or hub. Connect the printer directly to the USB port on the computer.

paper jams when using the rear access door

1. Remove the paper from the In and Out trays.
2. Press the **Resume** button on the front of the printer.
3. If you are printing labels, verify that a label did not become detached from the label sheet while passing through the printer.
4. Print the document if the paper jam is cleared.
Proceed to step 5 if the paper jam is not cleared.
5. Open the Rear Access Door by turning the latch counterclockwise and removing the door.



6. Remove the paper jam, then replace the Rear Access Door.
7. Print the document.

printer does not turn on

The printer may have drawn too much power.

1. Disconnect the power cord from the printer.
2. Wait approximately 10 seconds.
3. Reconnect the power cord to the printer.
4. Press the **Power** button to turn on the printer.

See also:

printing with the hp deskjet printer

*If you continue to have problems, contact **HP Customer Care**.*

printer is too slow

The print speed and overall performance of the printer can be affected by several variables.

computer does not meet system requirements

1. Verify the computer's RAM and processor speed.
See "Product Specifications" for more information.
2. Close all unnecessary software programs.
Too many software programs may be running at the same time.
3. Increase space on the hard drive.
If your computer has less than 100 MB available on the hard drive, the printer processing time will be longer.

printer software is outdated

1. Verify the printer driver being used.
2. Log onto HP's Website to download the most recent software updates for the printer. See the *quick reference guide* for Website information.

complex documents, graphics, or photographs are printing

Documents containing graphics or photographs print slower than text documents. To increase printing speed, try the following options:

- To use less computer memory, select the **Advanced** tab on the hp deskjet 9xx series screen, then select the **Low Memory Mode** option.
- If the printer is operating at 2400 x 1200 dpi, select the **Setup** tab and select the **PhotoREt** option instead of 2400 x 1200.

conflicting USB cable connections

A printing conflict may arise when the printer and several USB devices are attached to a hub. There are two methods for solving the conflict:

- Attach the printer's USB cable directly to the computer instead of a hub
- When the printer is attached to a hub, do not use other USB devices also attached to the hub while printing

automatic paper type option is enabled

When the Automatic option is enabled, the printer takes a few seconds to scan the first page of the print job. This is done to determine the appropriate paper type. To increase the print speed, turn off the Automatic Paper-Type Sensor.

turning off the automatic paper-type sensor

1. Use one of the following methods to display the hp deskjet 9xx series screen:

- Click **File > Print**, then select **Properties**.
- Click **File > Print Setup**, then select **Properties**.
- Click **File > Print > Setup**, then select **Properties**.

The option selected varies depending on the software program you are using.

The hp deskjet 9xx series screen appears displaying three tab options: Setup, Features, and Advanced.

2. Select the **Setup** tab.

3. To increase print speed, choose a specific paper type.

The Automatic Paper-Type Option is deselected.

See also:

[printing with the hp deskjet printer](#)

[the hp deskjet toolbox](#)

[product specifications for the hp deskjet 995c series printer](#)

[automatic paper-type sensor](#)

*If you continue to have problems, contact **HP Customer Care**.*

problems with printouts

blank pages are printing

The printer may process pages containing no text or images if:

- One or both print cartridges is empty
- The vinyl tape is not removed from the print cartridge
- A fax is being printed

check the print cartridges

1. Raise the printer's top cover to view the Print Cartridge Status icons.
2. Replace the print cartridge if it is empty.
3. Remove the protective piece of vinyl tape if it is still attached to the print cartridge.

save a facsimile (fax) file in graphic format

1. Save the fax in a graphic format with a .tiff file name extension.
2. Copy and insert the graphic in a word processing document.
3. Save the document.
4. Print the document in the word processing program.

document is printed off-center or at an angle

1. Verify that the paper is correctly placed in the In tray.
2. Verify that the paper guides fit snugly against the paper.
3. Reprint the document.

parts of the document are missing or printed in the wrong place

Follow these instructions to reset paper orientation, page size, print margins, and other options:

1. Use one of the following methods to display the hp deskjet 9xx series screen:
 - Click **File > Print**, then select **Properties**.
 - Click **File > Print Setup**, then select **Properties**.
 - Click **File > Print > Setup**, then select **Properties**.

The option selected varies depending on the software program you are using.

The hp deskjet 9xx series screen appears displaying three tab options: Setup, Features, and Advanced.

2. Select the **Features** tab, then choose the following options:
 - **Orientation**: Appropriate orientation
 - **Poster Printing**: Deselect **Poster Printing** if appropriate
3. Select the **Setup** tab then verify that the appropriate paper size is selected.
4. Verify that the margins are set within the printable area.
5. Select **Scale to Fit** on the Setup tab screen to verify that the text and graphics are correctly scaled.

printout does not reflect new print settings

The printer's default settings may differ from the software application's print settings. Select the appropriate print settings within the application.

photos are not printing correctly

1. Confirm that the photo media is placed in the In tray with the print side down.
2. Slide the paper forward until it stops.
3. Slide the paper guides snugly against the paper and push in the tray.
4. Use one of the following methods to display the hp deskjet 9xx series screen:
 - Click **File** > **Print**, then select **Properties**.
 - Click **File** > **Print Setup**, then select **Properties**.
 - Click **File** > **Print** > **Setup**, then select **Properties**.

The option selected varies depending on the software program you are using.

The hp deskjet 9xx series screen appears displaying three tab options: Setup, Features, and Advanced.

5. Select the **Setup** tab, then choose the following options:
 - **Paper Type:** an **hp photo paper**
 - **Paper Size:** Appropriate size
 - **Print Quality:** **Best**
6. Click **Apply** > **OK** to return to the Print or Print Setup screen.
7. Click **OK** to reprint the photo.

banners are not printing correctly

1. Verify that the Out tray is raised.
2. Verify that **Banner** is selected on the Setup tab.
3. Verify the paper position and type:
 - Unfold and refold the paper when several sheets feed into the printer at once.
 - Confirm that the unattached edge of the banner paper stack is facing the printer.
 - Verify that the correct paper for banner printing is used.
4. Confirm that the printer software is operating correctly if gaps appear on the ends of the sheets when printing.
 - Click **Start > Programs > hp deskjet 9xx series** to view *release notes*.
 - Choose **A4** or **Letter (8.5 x 11 in)**.

See also:

replacing print cartridges

minimum printing margins

*If you continue to have problems, contact **HP Customer Care**.*

problems with the infrared printing feature

infrared icon is not displayed

Correct the problem by performing one or more of these options:

- Follow the instructions that came with the laptop or notebook to configure it for infrared printing.
- Log on to the laptop or notebook manufacturer's Website or contact the support telephone number.
- Log on to the Infrared Data Association (IrDA) website at:
<http://www.irda.org>.
- Download the infrared driver from the Microsoft Windows 98/2000 software CD or from the Microsoft Website at:
<http://www.microsoft.com>.

infrared light is flashing

The flashing infrared light is not a signal that something is wrong with the infrared print feature. It confirms that a connection has been established between the printer and the laptop or notebook.

printer stopped printing

If the device is moved out of range of the printer's infrared lens, the infrared light turns off and the printer stops printing. Realign both devices within 30 seconds and the print job will resume.

printer is taking too long to print

Position the device closer to the printer's infrared lens and verify the following:

1. An infrared port is selected on the laptop or notebook.
2. The device and the printer are correctly aligned.
3. The device is IrDA-compliant.
Look for an IrDA symbol or see the device's user guide for information.
4. There is no bright light shining directly into either devices' infrared lens.

printer prints only a single calendar appointment

The Palm Pilot may not have an enhanced printing application installed. You must install an enhanced printing application to print more than one calendar appointment at a time.



An enhanced printing application may not be available in your region.

See also:

infrared printing feature

*If you continue to have problems, contact **HP Customer Care**.*

problems with the automatic two-sided printing module

binding margin is in the wrong place

You may have chosen an incorrect paper orientation.

1. Use one of the following methods to display the hp deskjet 9xx series screen:
 - Click **File > Print**, then select **Properties**.
 - Click **File > Print Setup**, then select **Properties**.
 - Click **File > Print > Setup**, then select **Properties**.

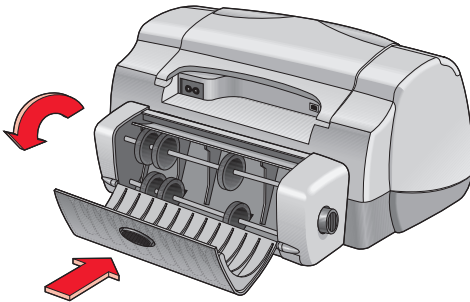
The option selected varies depending on the software program you are using.

The hp deskjet 9xx series screen appears displaying three tab options: Setup, Features, and Advanced.

2. Select the **Features** tab.
3. Verify that either **Book** or **Tablet** is selected.
4. Click **Apply**.
5. Click **OK** to return to the Print or Print Setup screen.
6. Click **OK** to print the document.

paper jams occur inside the automatic two-sided printing module

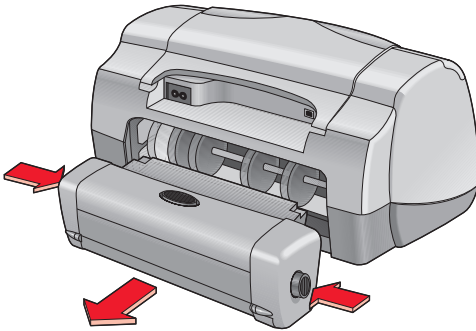
1. Remove the paper from the In and Out trays.
2. Press the **Resume** button on the front of the printer.
Proceed to step 3 if the paper jam is not cleared.
3. Turn off the printer.
4. Press the button on top of the Automatic Two-Sided Printing Module and lower the access door.



5. Remove the paper jam from the module and close the access door.
6. Turn on the printer.
7. Reprint the document.

paper jams occur in the printer when the automatic two-sided printing module is attached

1. Remove the paper from the In and Out trays.
2. Press the **Resume** button on the front of the printer.
Proceed to step 3 if the paper jam is not cleared.
3. Turn off the printer.
4. Simultaneously press the release buttons located on each side of the Automatic Two-Sided Printing Module.
5. Remove the module.



6. Remove the paper jam and replace the module.
7. Turn on the printer.
8. Reprint the document.

automatic option for two-sided printing is missing in the features tab

The Automatic Two-Sided Printing Module may not be enabled in the Toolbox. Follow these instructions to correct the problem.

selecting automatic two-sided printing module

1. Click **Start > Programs > hp deskjet 9xx series > hp deskjet 9xx series Toolbox**.
2. Select the **Configuration** tab.
3. Select **Automatic Two-Sided Printing Module**.
4. Click **Apply**, then exit the Toolbox.

printing with the automatic two-sided printing module

1. Open the file you want to print.
2. Use one of the following methods to display the hp deskjet 9xx series screen:
 - Click **File > Print**, then click **Properties**.
 - Click **File > Print Setup**, then click **Properties**.
 - Click **File > Print > Setup**, then click **Properties**.

The option selected varies depending on the software program you are using.

The hp deskjet 9xx series screen appears displaying three tab options: Setup, Features, and Advanced.

3. Select the **Features** tab and select **Two-sided printing**.

The Two-Sided Printing Margin dialog box appears.

- Select the appropriate page content option and click **OK**.
 - Select **Book** or **Tablet** as the page orientation.
 - Select **Automatic**.
4. Click **OK** to return to the Print or Print Setup screen.
 5. Click **OK** to print.

automatic option for two-sided printing cannot be selected in the features tab

An unsupported paper type or size may be selected in the Setup tab.

1. Open the file you want to print.
2. Use one of the following methods to display the hp deskjet 9xx series screen:
 - Click **File > Print**, then select **Properties**.
 - Click **File > Print Setup**, then select **Properties**.
 - Click **File > Print > Setup**, then select **Properties**.

The option selected varies depending on the software program you are using.

The hp deskjet 9xx series screen appears displaying three tab options: Setup, Features, and Advanced.

3. Select the **Setup** tab.
4. Verify that a paper type and size supported by the Automatic Two-Sided printing Module is selected.

paper size changes when the automatic two-sided printing option is selected in the features tab

The paper size selected in the Setup tab is not supported by the Automatic Two-Sided Printing Module.

1. Use one of the following methods to display the hp deskjet 9xx series screen:
 - Click **File > Print**, then click **Properties**.
 - Click **File > Print Setup**, then click **Properties**.
 - Click **File > Print > Setup**, then click **Properties**.

The option selected varies depending on the software program you are using.

The hp deskjet 9xx series screen appears displaying three tab options: Setup, Features, and Advanced.

2. Click the **Setup** tab.
3. Verify that a paper size supported by the Automatic Two-Sided printing module is selected.

only one side of the page prints when the automatic two-sided printing option is selected

Use the following solutions:

- Print the document using the manual two-sided printing feature.
- Use a media type supported by the Automatic Two-Sided Printing Module.
- Use a media size supported by the Automatic Two-Sided Printing Module.

See also:

automatic two-sided printing module
manual two-sided printing

*If you continue to have problems, contact **HP Customer Care**.*

problems with the automatic paper-type sensor

print quality is different when the automatic option is selected

The print quality is automatically set to Normal when the Automatic Paper-Type Option is selected. The print quality may improve when a specific paper type is selected. Follow these instructions to select a specific paper type:

1. Use one of the following methods to display the hp deskjet 9xx series screen:
 - Click **File** > **Print**, then select **Properties**.
 - Click **File** > **Print Setup**, then select **Properties**.
 - Click **File** > **Print** > **Setup**, then select **Properties**.

The option selected varies depending on the software program you are using.

The hp deskjet 9xx series screen appears displaying three tab options: Setup, Features, and Advanced.

2. Select the **Setup** tab, then select any paper type *other than Automatic*.
3. Click **OK** to return to the Print or Print Setup screen.
4. Click **OK** to print.

optimal paper mode is not used when the automatic option is selected

1. Verify that the paper is free of scratches or wrinkles.
The Automatic Paper-Type Sensor is less accurate if the paper is damaged.
2. Manually select the appropriate paper type.
The Automatic Paper-Type Sensor sets the paper type to Plain Paper if you are using one of these media types:
 - Letterhead paper
 - Stationery that has a printed pattern on the top edge of the paper
 - Dark colored paper
 - Paper containing metallic fibers

printer ejects the paper

The printer may have been placed in direct sunlight which can affect the Automatic Paper-Type Sensor. Move the printer away from direct sunlight.

See also:

automatic paper-type sensor

*If you continue to have problems, contact **HP Customer Care**.*

problems with the Bluetooth wireless communications feature

For more information about your printer's Bluetooth wireless communications feature, visit HP's Website at: <http://www.hp.com>. Click **drivers**, type **995c** in the **enter product name and number** box, and then press **Enter**.

product specifications

- **product specifications for the hp deskjet 995c series printer**
- **Bluetooth wireless communications feature specifications**
- **infrared printing specifications**
- **automatic two-sided printing module specifications**
- **minimum printing margins**
- **system requirements**

product specifications for the hp deskjet 995c series printer

hp deskjet 995c model no. C8925A

black text print speed

Draft: Up to 17 pages per minute

mixed text with color graphics print speed

Draft: Up to 13 pages per minute

black truetype text resolution (depending on paper type)

Draft: 300 x 300 dpi

Normal: 600 x 600 dpi

Best: 600 x 600 dpi

color resolution (depending on paper type)

Draft: 300 x 300 dpi + PhotoREt

Normal: 600 x 600 dpi + PhotoREt

Best: 600 x 600 dpi + PhotoREt

photo paper printing resolution

PhotoREt

2400 x 1200 dpi

print technology

Drop-on-Demand thermal inkjet printing

software compatibility

MS Windows compatible (95, 98, Me, 2000, and NT 4.0)

duty cycle

5,000 pages per month

memory

8MB built-in RAM

8MB, 96 MHz processor

buttons/lights

Cancel Button

Print Cartridge Status Light

Resume Button and Light

Power Button and Light

Infrared Light

Bluetooth Wireless Connection Status Light (Visit HP's Website to see product specification information for HP Deskjet's Bluetooth wireless communications feature)

i/o interface

Universal Serial Bus 2.0

IrDA version 1.1, 4 MBps

Bluetooth wireless communications (Visit HP's Website to see product specification information for HP Deskjet's Bluetooth wireless communications feature)

dimensions

With Automatic Two-Sided Printing Module:

440 mm wide x 196 mm high x 435 mm deep

17.32 in wide x 7.72 in high x 17.13 in deep

weight

With Automatic Two-Sided Printing Module:

6.65 kg (14.65 lb) without print cartridges

Without Automatic Two-Sided Printing Module:

5.85 kg (12.9 lb) without print cartridges

operating environment

Maximum operating conditions:

Temperature: 41 to 104 degree F, 5 to 40 degrees C
Humidity: 15 to 80 percent RH non condensing

Recommended operating conditions for best print quality:

Temperature: 59 to 95 degrees F or 15 to 35 degrees C
Humidity: 20 to 80 percent RH non condensing

Storage conditions:

Temperature: -40 to 140 degrees F, -40 to 60 degrees C

power consumption

2 watts maximum when off
4 watts average non-printing
40 watts average when printing

power requirements

Input Voltage: 100 to 240 Vac ($\pm 10\%$)
Input Frequency: 50/60 Hz (+3 Hz)
Accommodates the worldwide range of AC line voltages and frequencies.

declared noise emissions in accordance with ISO 9296

Sound power level, LWAd (1B = 10 dB):

6 dB in normal mode

Sound pressure level, LpAm (bystander positions):

49 dB in normal mode

alignment

Skew:

± 0.152 mm/mm (0.006 in/in) on plain paper
 ± 0.254 mm/mm (0.010 in/in) on HP transparency films

media weight

Paper:

U.S. Letter: 60 to 90 g/m² (16 to 24 lb)

Legal: 75 to 90 g/m² (20 to 24 lb)

Envelopes: 75 to 90 g/m² (20 to 24 lb)

Cards: Up to 200 g/m² (110 lb index max)

Banner paper: 60 to 90 g/m² (16 to 24 lb)

media handling

Sheets: up to 150

Banners: up to 20 sheets

Envelopes: up to 15

Cards: up to 45 cards

Greeting cards: up to 5 cards

Transparencies: up to 30

Labels: up to 20 sheets of labels (use only U.S. Letter- or A4-sized sheets)

Photo paper: up to 20 sheets

Out tray capacity:

Draft: up to 35 sheets

Normal: up to 50 sheets

Best: up to 50 sheets

media size

Paper:

U.S. Letter: 216 x 279 mm (8.5 x 11 in)

Legal: 216 x 356 mm (8.5 x 14 in)

Executive: 184 x 279 mm (7.25 x 10.5 in)

A4: 210 x 297 mm

A5: 148 x 210 mm

B5-JIS: 182 x 257 mm

User Defined:

Width: 77 to 216 mm (3.0 to 8.5 in)

Length: 127 to 356 mm (5.0 to 14 in)

Banner:

U.S. Letter: 216 x 279 mm (8.5 x 11 in)
A4: 210 x 297 mm

Envelopes:

U.S. No. 10: 105 x 241 mm (4.3 x 9.5 in)
Invitation A2: 111 x 146 mm (4.37 x 5.75 in)
DL: 220 x 110 mm
C6: 114 x 162 mm

Index/Greeting Cards:

76 x 127 mm (3 x 5 in)
102 x 152 mm (4 x 6 in)
127 x 203 mm (5 x 8 in)

AG: 105 x 148.5 mm

Hagaki: 100 x 148 mm

Labels:

U.S. Letter: 216 x 279 mm (8.5 x 11 in)
A4: 210 x 297 mm

Transparencies:

U.S. Letter: 216 x 279 mm (8.5 x 11 in)
A4: 210 x 297 mm

Photo (with tear-off tab): 102 x 152 mm (4 x 6 in)

print cartridges

Black: HP 516**45**A Series or HP No. 45

Tri-color: HP C65**78**D Series or HP No. 78

Large Tri-color: HP C65**78**A Series or HP No. 78

Bluetooth wireless communications feature specifications

For more information about your printer's Bluetooth wireless communications feature, visit HP's Website at: <http://www.hp.com>. Click **drivers**, type **995c** in the **enter product name and number** box, and then press **Enter**.

infrared printing specifications

range

1 meter (3 feet)
30 degree cone

supported operating systems

Some operating systems supported by infrared technology include:

Windows 2000
Windows 98
Windows CE
Palm

supported devices

Some of the devices supported by infrared technology include:

Laptop or notebook computer with infrared capability (including the hp omnibook)

Some personal digital assistants (including the Palm product line)

Some Windows CE devices (including the hp jornada)

Digital cameras with infrared capability and the JetSend program (including the hp photosmart)

Cellular phones with infrared capability

supported protocols

IrLPT
JetSend
OBEX

automatic two-sided printing module specifications

Automatic Two-Sided Printing Module model no. C6463A

duty cycle

5,000 sides of pages per month

dimensions

324 mm (12.75 in) long x 133 mm (5.25 in) wide x 111 mm (4.37 in) high

weight

0.79 kg (1.75 lbs)

declared noise emissions in accordance with ISO 9296

Sound power level, LWAd (1B = 10 dB):

6.1 dB in normal mode

Sound pressure level, LpAm (bystander positions):

48 dB in normal mode

media weight

U.S. Letter and A4 paper: 60 to 90 g/m² (16 to 24 lb)

Cards: up to 160 g/m² (90 lb index maximum)

minimum printing margins

Letter and Executive:

Left and right margins: 6.4 mm (0.25 in)
Top and bottom margins: 11.7 mm (0.46 in)

A4:

Left and right margins: 3.4 mm (0.134 in)
Top and bottom margins: 11.7 mm (0.46 in)

A5, B5, 5 x 8 in Card, and User Defined Size:

Left and right margins: 3.17 mm (0.125 in)
Top and bottom margins: 11.7 mm (0.46 in)

media size

Paper:

U.S. Letter: 216 x 279 mm (8.5 x 11 in)
Executive: 184 x 279 mm (7.25 x 10.5 in)
A4: 210 x 297 mm
A5: 148 x 210 mm
B5: 182 x 257 mm

Cards:

127 x 203 mm (5 x 8 in)

User Defined Size:

Minimum
100 mm x 148 mm (3.94 x 5.83 in)

Maximum
216 mm x 297 mm (8.5 x 11.7 in)

media type

HP plain paper or hp bright white inkjet paper:

Letter-size, 500 sheets C1824A

A4-size, 500 sheets C1825A

Letter-size, 250 sheets C5976B

A4-size, 250 sheets C5977B

HP photo quality inkjet paper, matte finish:

Letter-size, 100 sheets C7007A

HP photo quality inkjet paper, semi gloss:

Letter-size, 25 sheets C6983A

A4-size, 25 sheets (Europe) C6984A

A4-size, 25 sheets (Asia) C7006A

HP premium inkjet heavyweight paper:

A4-size, 100 sheets C1853A

HP felt-textured greeting card paper, ivory/half-fold:

Letter-size, 20 sheets and 20 envelopes C6828A

HP professional brochure & flyer paper, two-sided gloss:

Letter-size, 50 sheets C6817A

A4-size, 50 sheets (Europe) C6816A

A4-size, 50 sheets (Asia) C6819A

HP professional brochure & flyer paper, two-sided, matte finish:

Letter-size, 50 sheets C6955A

minimum printing margins

See the printing margin settings for the following media types:

A4 paper

Left and Right Margins: 3.4 mm (0.134 in)

Top Margin: 1.8 mm (0.07 in)

Bottom Margin: 11.7 mm (0.46 in)

letter, legal, and executive paper

Left and Right Margins: 6.4 mm (0.25 in)

Top Margin: 1.8 mm (0.07 in)

Bottom Margin: 11.7 mm (0.46 in)

A5, B5, and user defined paper

Left and Right Margins: 3.2 mm (0.125 in)

Top Margin: 1.8 mm (.07 in)

Bottom Margin: 11.7 mm (0.46 in)

cards (3 x 5 in, 4 x 6, 5 x 8, and A6)

Left and Right Margins: 3.2 mm (0.125 in)

Top Margin: 1.8 mm (0.07 in)

Bottom Margin: 11.7 mm (0.46 in)

Hagaki postcards

Left and Right Margins: 3.2 mm (0.125 in)

Top Margin: 1.8 mm (0.07 in)

Bottom Margin: 11.7 mm (0.46 in)

envelopes

Left and Right Margins: 3.2 mm (0.125 in)

Top Margin: 1.8 mm (0.07 in)

Bottom Margin: 11.7 mm (0.46 in)

banners - A4 (210 x 297 mm [8.27 x 11.7 in])

Left and Right Margins: 3.4 mm (0.134 in)

Top Margin: 0.0 mm (0.00 in)

Bottom Margin: 0.0 mm (0.00 in)

banners - letter (216 x 279 mm [8.5 x 11 in])

Left and Right Margins: 6.4 mm (0.25 in)

Top Margin: 0.0 mm (0.00 in)

Bottom Margin: 0.0 mm (0.00 in)

photo with tear-off tab

Left and Right Margins: 3.2 mm (0.125 in)

Top Margin: 3.2 mm (0.125 in)

Bottom Margin: 3.2 mm (0.125 in)

system requirements

Your computer should meet the following requirements:

Microsoft Windows 2000

Minimum Processor Speed: Pentium 133 MHz
Required RAM: 64 MB
Required Free Hard Disk Space: 40 MB*

Microsoft Windows Me

Minimum Processor Speed: Pentium 150 MHz
Required RAM: 32 MB
Required Free Hard Disk Space: 40 MB*

Microsoft Windows 95, 98, or NT 4.0

Minimum Processor Speed: Pentium 66 MHz
Required RAM: 32 MB
Required Free Hard Disk Space: 40 MB*

* If you are printing photographs, you must have at least 100 MB free hard disk space. If you are printing at 2400 x 1200 dpi, you must have at least 400 MB free hard disk space.

index

a

- alignment **106**
- Automatic default printer setting **9**
- Automatic Paper-Type Sensor **2, 9, 58**
 - disabling **59, 86**
 - print quality **99**
 - printing problems **100**
 - problems **99**
 - troubleshooting **86**
- Automatic Two-Sided Printing Module **2, 8, 16, 56**
 - only one page prints **98**
 - option cannot be enabled **97**
 - paper size changes **98**
 - printing problems **93**
 - specifications **111**
 - supported paper types **56**

b

- banner paper **39, 40**
- banner printing **11**
- banner printing problems **90**
- banners
 - printing **39**
- binding
 - book **44**
 - tablet **44**
- blank pages printing **87**
- Bluetooth wireless feature **2, 7, 9, 48**
 - Bluetooth connection status light **79**
 - problems with **101**
 - specifications **109**
- book binding **44**
- built-in memory **105**
- business card printing **28**
- buttons **105**
 - Cancel **6**
 - Power **7**
 - Resume **7**

c

- calibrating printer **76**
- calibration page **67**
- cleaning print cartridge **76**
 - automatic **68**
 - manual **69**
- cleaning printer case **72**
- color
 - adjustments **14**
- color graphics **104**
- ColorSmart III **2**

d

- damage to printer **66, 73**
- default printer setting
 - Automatic **9**
- diagnostics page **76**
- digital photos **32**
- dimensions **105**
- duty cycle **104**

e

- envelope printing **11**
 - guidelines **21, 23**
 - multiple **22**
 - single **20**
- error writing to LPT1 **81**
- error writing to USB port **81**

f

- flashing lights **78, 80**
 - all lights flashing **79**
 - Power light **78**
 - Print Cartridge light **79**
 - Resume light **78**

g

- greeting card printing **33**
- greeting cards
 - printing
 - guidelines **35**

h

- hard disk space **116**
- HP Deskjet printer features **2**
- HP Deskjet Toolbox **76**
 - opening **76**
 - utilities **76**
- Windows 95, 98, Me, 2000, NT4 **76**
- HP photo paper **31, 32**

i

- In tray **7, 10**
 - index card printing **28**
 - Infrared icon **49**
 - infrared lens **8, 49, 50**
 - infrared light **49, 50**
 - Infrared Monitor **50**
 - infrared printing **2, 49**
 - delayed printing **92**
 - in Windows 2000 **50**
 - in Windows 98 **49**
 - IrLPT **110**
 - JetSend option **54**
 - OBEX **110**
 - PCL inkjet option **54**
 - problems **91**
 - specifications **110**
 - status **50**
 - supported devices **110**
 - supported operating systems **110**
 - supported protocols **110**
 - with HP PhotoSmart Digital Camera **52**
 - positioning devices **52**
 - with laptop **49**
 - displaying icon on taskbar **51**
 - positioning devices **50**
 - with notebook **49**
 - with Palm Pilot **51**
 - beaming **52**
 - positioning devices **51**
 - with Windows CE device **53**
 - positioning devices **53**
- ink streaks **68, 69**

- installing automatic two-sided printing module
 - automatic two-sided printing module **55**
- IrDA **49, 91**
- iron-on transfer printing **41**
 - guidelines **42**

l

- label printing **26**
 - guidelines **27**
- lights **105**
 - Bluetooth connection **7**
 - flashing **78, 80, 91**
 - Power **7**
 - Print Cartridge Status **6, 62, 63, 67**
 - Resume **7**
- Low Memory Mode **14, 85**

m

- manual two-sided printing **8, 43**
 - guidelines **45**
 - margins **114**
 - banners **115**
 - cards **114**
 - envelopes **114**
 - paper **114**
 - photo paper with tear-off tab **115**
 - postcards **114**
 - setting **12**
 - media sizes **107**
 - media weight **107**
 - memory **105**
 - minimum printing margins **12, 114**
 - mirror image **42**
 - missing lines or dots **68**
 - mouse icon **4**
- ## **n**
- noise emissions **106**
 - note icon **4**

o

operating environment **106**
Out tray **7, 11**
Out tray extension **11**

p

page orientation **13**
paper alignment **106**
paper capacity **107**
paper does not come out of printer **80**
paper jams **78, 82**
 clearing **78**
 in Automatic Two-Sided Printing
 Module **94**
 in Rear Access Door **82**
paper sizes **107**
paper trays **7, 10**
 In tray **10**
 Out tray **11**
 Out tray extension **11**
paper types **107**
 determining automatically **58**
part of document missing **88**
photo paper **31**
photo paper printing resolution **104**
photograph printing **30**
 guidelines **32**
PhotoREt **2, 31, 32, 85, 104**
photos printing incorrectly **89**
poster printing **36**
 guidelines **37**
power consumption **106**
print cartridge
 checking status **63**
 cleaning **76**
 automatic **68**
 manual **69**
 cleaning debris **69**
 copper contacts **66**
 defective **63**
 improper installation **63**
 ink nozzle plate **69**
 ink nozzles **66**
 low ink **62, 64**
 maintaining **74**
 missing **63**
 part numbers **75**
 refilling **73**
 warranty exclusion **73**
 removing debris **70**
 replacing **65, 87**
 status **63**
 status icons **63**
 storing **74**
 troubleshooting problems with **63**
 warning messages **16**
 when to clean **68**
print cartridge cradle **65**
 cleaning **71**
Print Cartridge Status icons **63**
Print Cartridge Status light **62, 63, 67**
print properties **13**
print quality **16**
print settings **16**
 default **9, 16, 17**
 Default Print Settings taskbar icon **16**
print speed **2, 84, 104**
 black text **104**
 mixed text with color graphics **104**
print technology **104**
printable area **12, 114**
printer
 cleaning cartridges **69**
 cleaning case **72**
 damage to **73**
 dimensions **105**
 I/O interface **105**
 media sizes **107**
 media types **107**
 media weight **107**
 minimum printing margins **114**
 noise emissions **106**
 operating conditions **106**
 operating environment **106**
 paper alignment **106**
 paper capacity **107**
 paper sizes **107**
 power consumption **106**

- print cartridge cradle noise **72**
- setting printing margins **12**
- voltage **106**
- weight **105**
- printer does not turn on **83**
- printer driver **13**
- printer features **6**
- printer maintenance
 - HP Deskjet Toolbox **76**
- printer memory **105**
- printer not printing **80**
- Printer Properties
 - Advanced tab
 - Windows 95, 98, Me, 2000, NT4 **14**
 - Features tab
 - Windows 95, 98, Me, 2000, NT4 **13**
 - Setup tab
 - Windows 95, 98, Me, 2000, NT **13**
- Printer Properties dialog box **15**
- Printer Settings taskbar icon **15, 16**
- printer software **13**
- printer specifications **104**
- printer status
 - flashing lights **78**
- printer too slow **84**
- printing
 - automatic two-sided **57**
 - banners **39**
 - guidelines **40**
 - business cards **28**
 - guidelines **29**
 - envelopes
 - guidelines **21, 23**
 - multiple **22**
 - single **20**
 - stack **22**
 - greeting cards **33**
 - guidelines **35**
 - index cards **28**
 - guidelines **29**
 - iron-on transfers **41**
 - guidelines **42**

- labels **26**
 - guidelines **26, 27**
- manual two-sided **43**
 - guidelines **45**
- mirror image **42**
- photographs **30**
 - guidelines **32**
- posters **36**
 - guidelines **37**
- small media **28**
 - guidelines **29**
- transparencies **24**
 - guidelines **25**
- Windows 95, 98, Me, 2000, NT4 **13**
- printing margins **12, 114**
 - minimum **114**
 - setting **12, 114**
- printing speed
 - increasing **31, 32**
- printing test page **71**
- printout problems **87**

r

- Rear Access Door **8, 45, 78**
- refilling print cartridge **73**
- restarting printer
 - when to restart **79**

s

- setting **12**
- Setup tab **13**
- shortcuts
 - taskbar icon **17**
- small media printing **28**
- software compatibility **104**
- specifications **104**
 - Automatic Two-Sided Printing Module **111**
 - infrared printing **110**
 - minimum printing margins **114**
 - print cartridges **108**
 - printer **104**
 - system requirements **116**
- stack of envelopes **22**

- surge protector **7**
- symbols **3**
- system requirements **116**
 - Windows 2000 **116**
 - Windows 95, 98, Me, NT, Windows requirements **116**

f

- tablet binding **44**
- taskbar icon **15**
 - shortcuts **17**
- text resolution **104**
- Toolbox **76**
 - opening **76**
 - utilities **76**
 - Windows 95, 98, Me, 2000, NT4 **76**
- transparency printing **24**
 - guidelines **25**
- troubleshooting
 - automatic paper option **86**
 - Automatic Paper-Type Sensor problems **99**
 - Automatic Two-Sided Printing Module
 - cannot enable option **97**
 - only one page prints **98**
 - paper size changes **98**
 - Automatic Two-Sided Printing Module problems **93**
 - banner printing problems **90**
 - blank pages printing **87**
 - complex documents **85**
 - document printing at angle **87**
 - error writing to LPT1 **81**
 - error writing to USB port **81**
 - flashing lights **78, 80**
 - infrared light flashing **91**
 - infrared printing problems **91**
 - new print setting not shown **88**
 - paper does not come out of printer **80**
 - paper ejected **100**
 - paper jams **78, 82, 94**

- part of document missing **88**
- photos printing incorrectly **89**
- print cartridges **87**
- printer does not turn on **83**
- printer not printing **80**
- printer too slow **84**
- printout problems **87**
- USB connection problems **81, 85**

- two-sided printing **13**
 - automatic **8, 15, 56**
 - noise emissions **111**
 - paper types **111**
 - printing margins **112**
 - specifications **111**
 - manual **8, 43**

U

- USB connection problems **81, 85**

W

- warning messages **3, 16**
- warnings
 - print cartridge **16**
- warnings icon **3**
- What's This? help feature **4, 14**