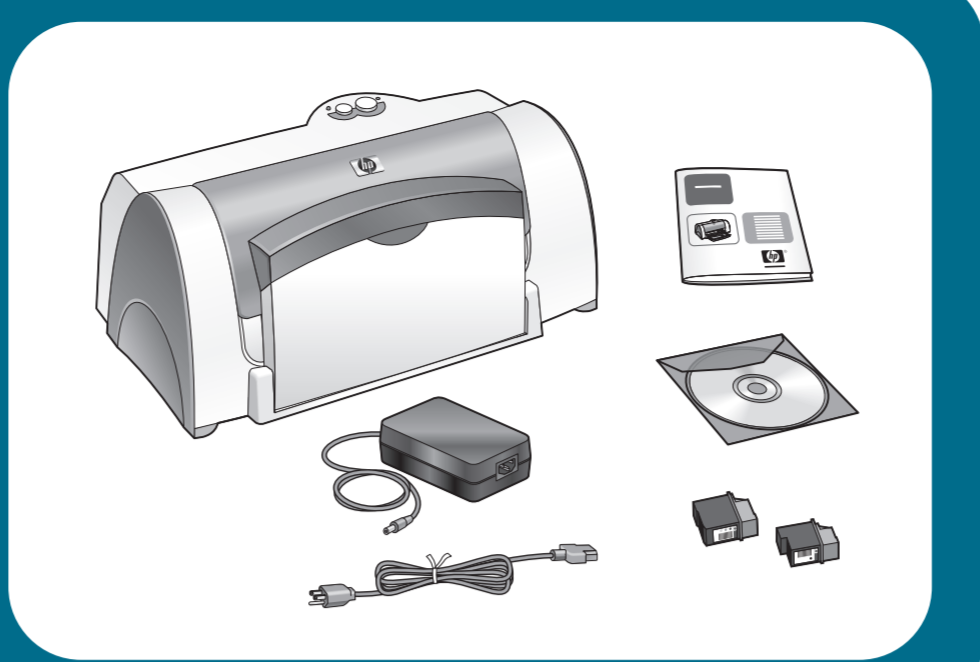


quick start démarrage rapide

hp deskjet 656c series

Windows

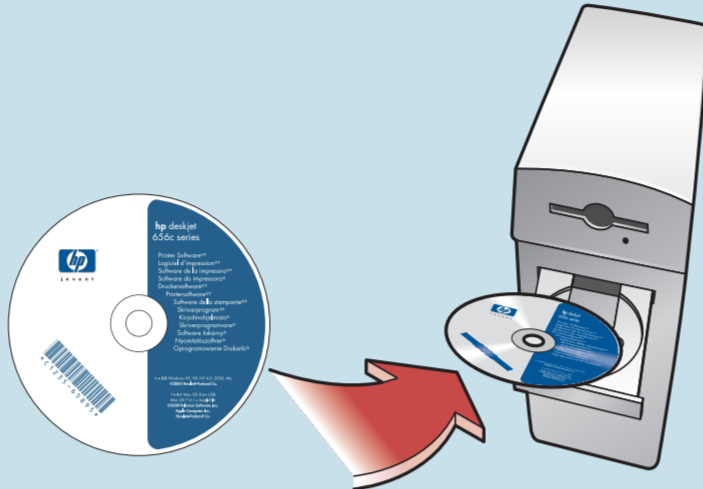


recommended setup
configuration recommandée

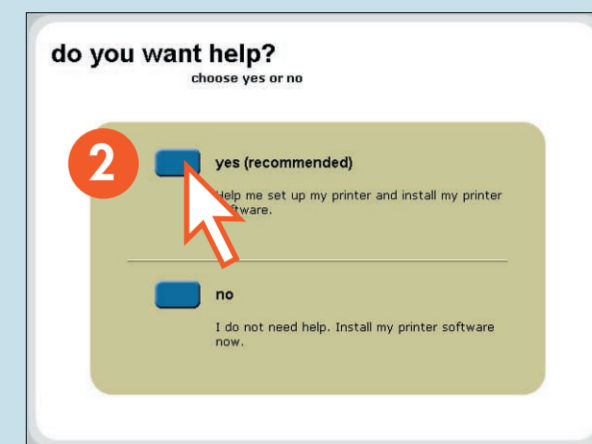
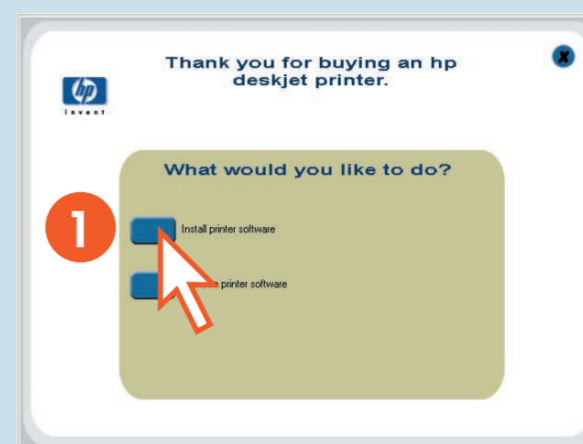
OR
OU

alternate setup
autre configuration

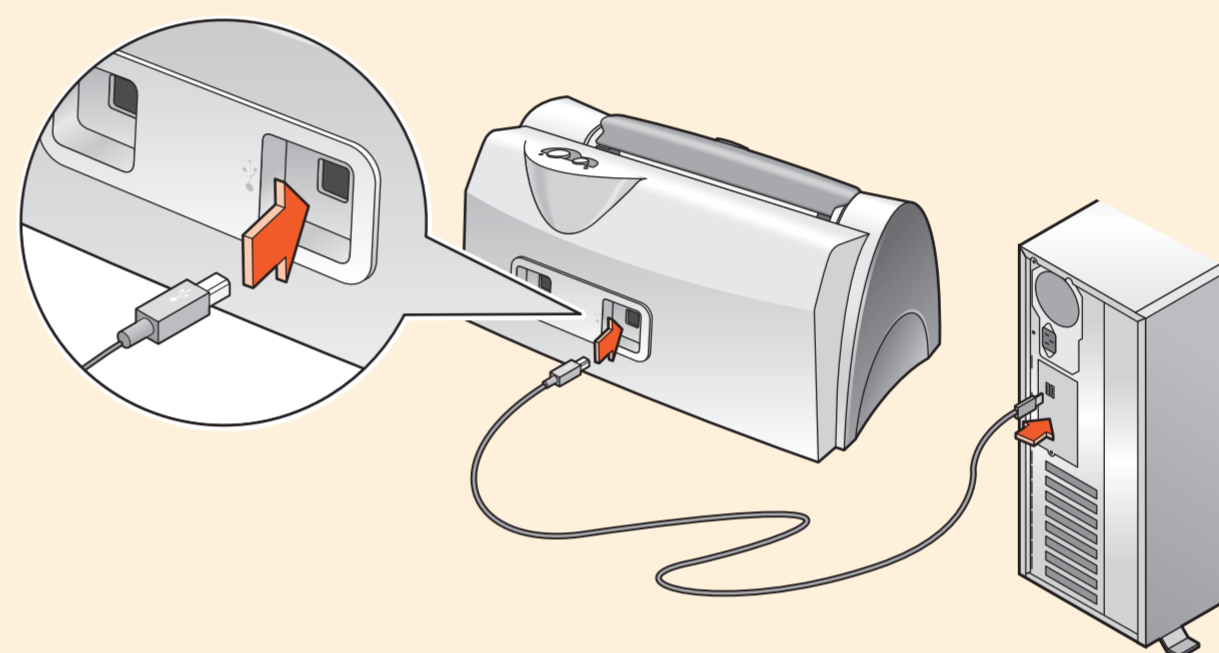
1 Insert CD.
Insérez le CD.



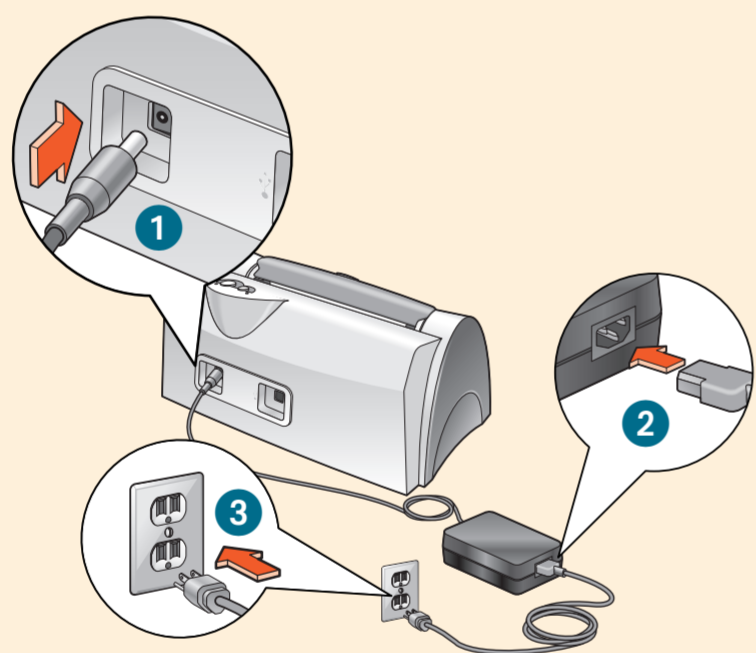
2 Follow instructions.
Suivez les instructions.



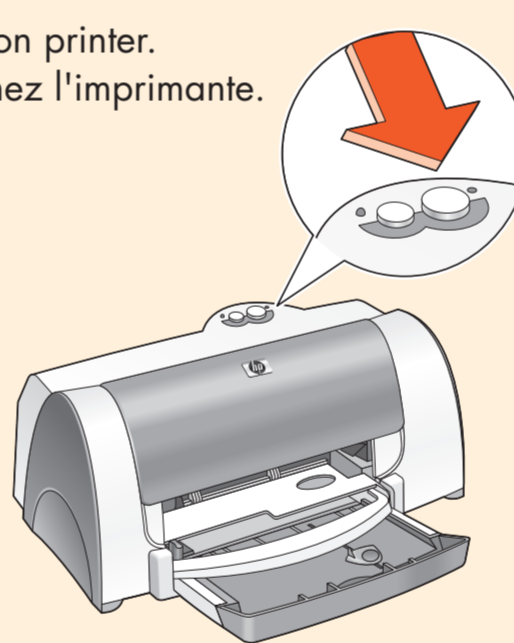
1 Connect USB cable.
Connectez le câble USB.



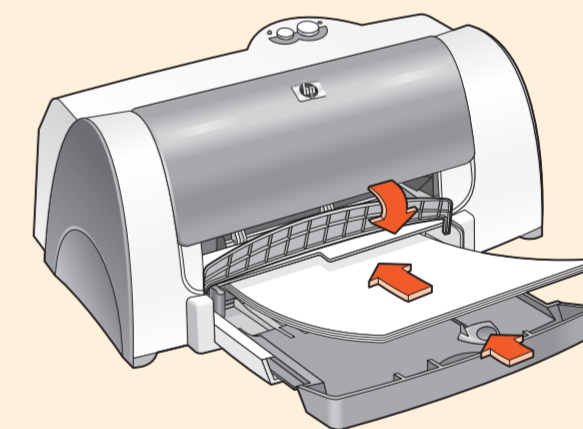
2 Plug in power cord.
Branchez le câble d'alimentation.



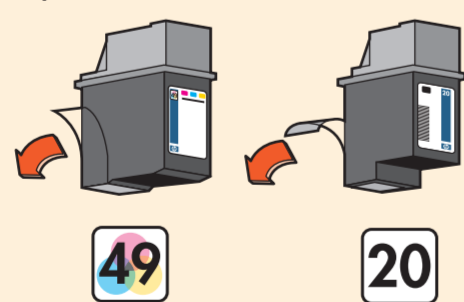
Turn on printer.
Allumez l'imprimante.



3 Load white paper.
Chargez des feuilles de papier vierge.

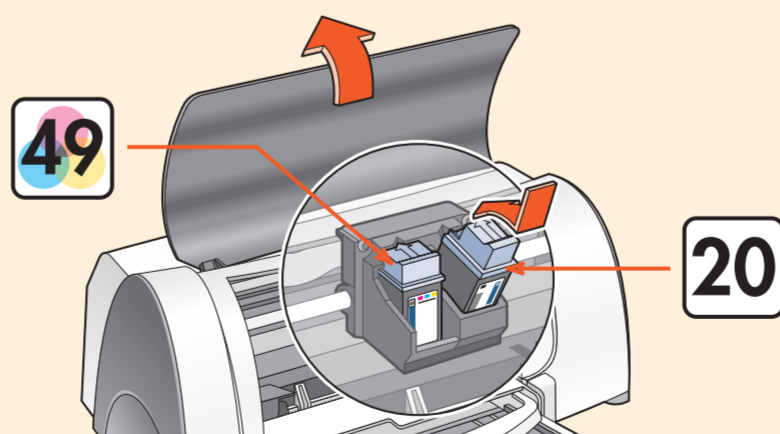


4 Remove vinyl tape.
Retirez la bande en vinyle.

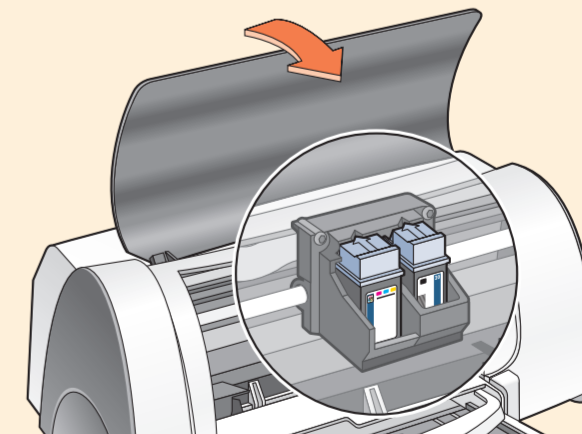


Do not touch or remove copper strip.
Veuillez ne pas toucher ni retirer la bande en cuivre.

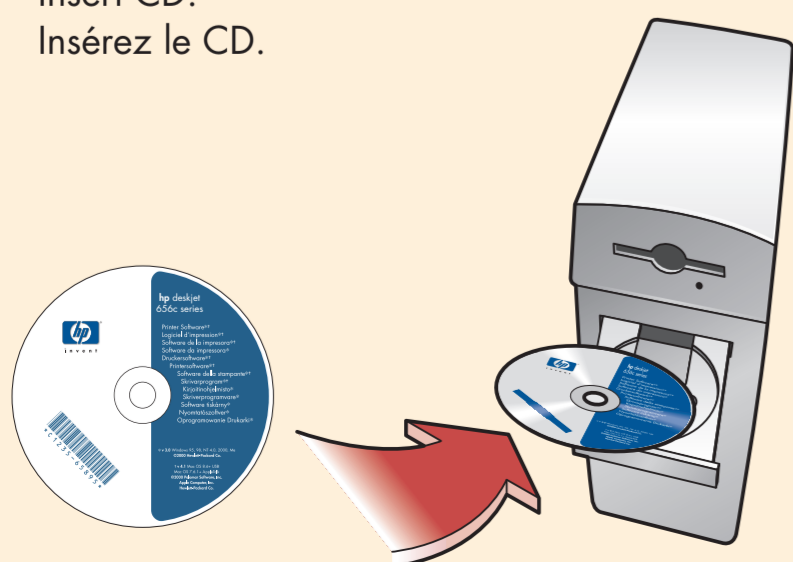
5 Open top cover, then insert print cartridges.
Ouvrez le capot supérieur, puis insérez les cartouches d'impression.



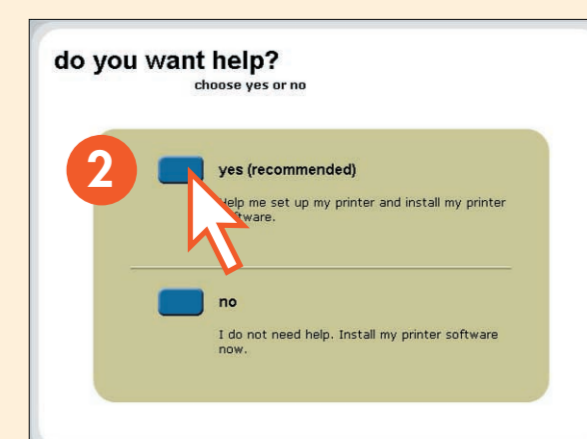
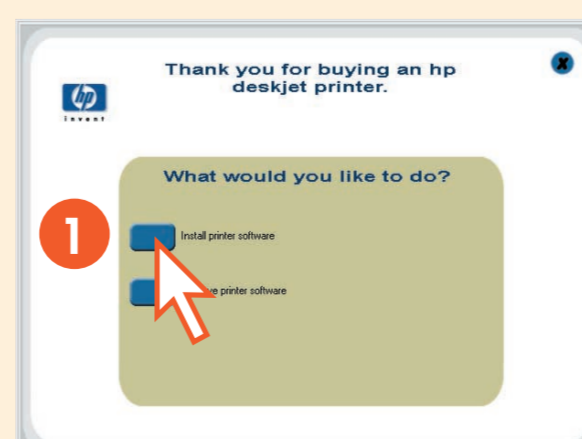
Close top cover.
Refermez le capot supérieur.



6 Insert CD.
Insérez le CD.

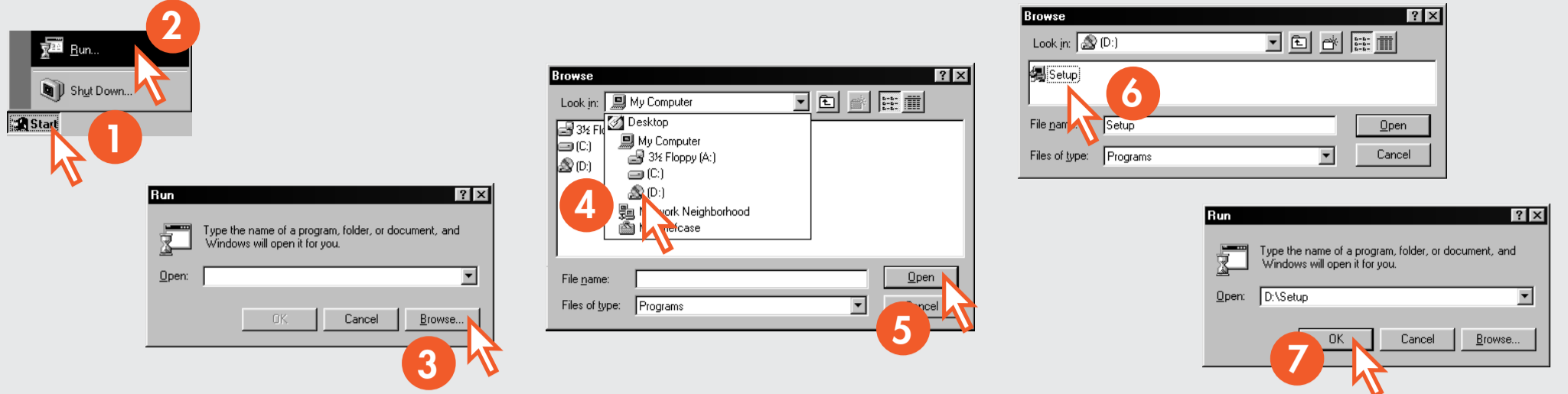


7 Follow on-screen instructions.
Suivez les instructions à l'écran.



troubleshooting dépannage

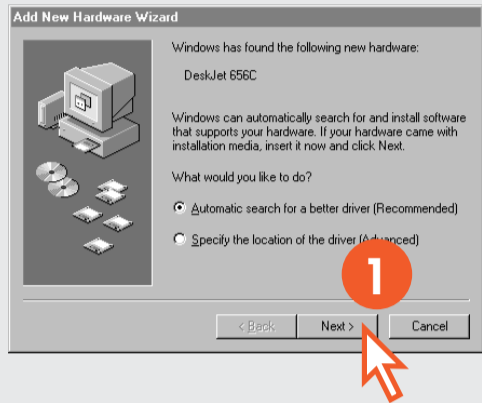
No screens? Do the following.
Aucun écran? Procédez comme suit :



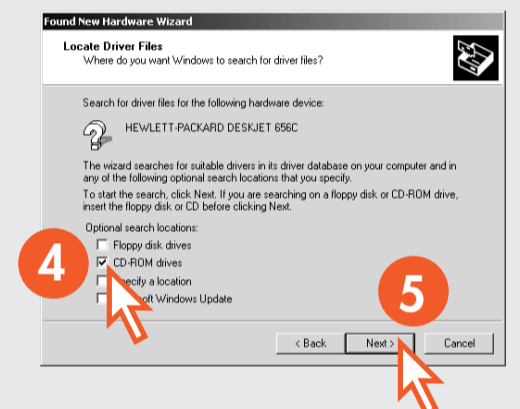
Wizard screens?
Select your operating system and follow the steps.

Écrans Assistant?
Sélectionnez le système d'exploitation et suivez la procédure.

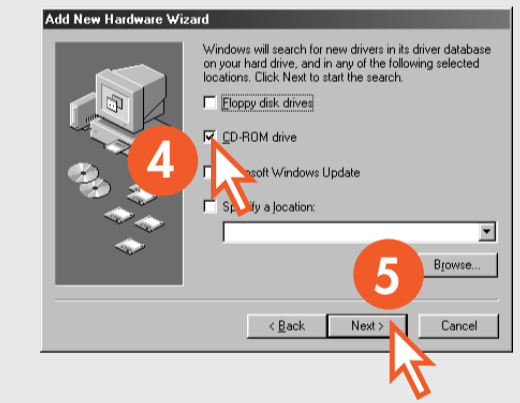
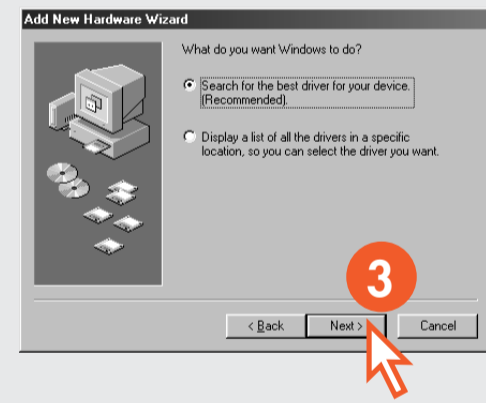
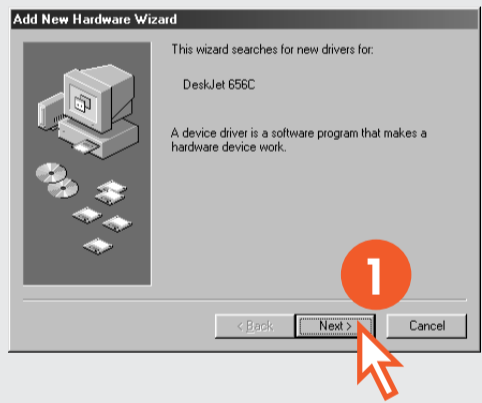
Windows Me



Windows 2000



Windows 98

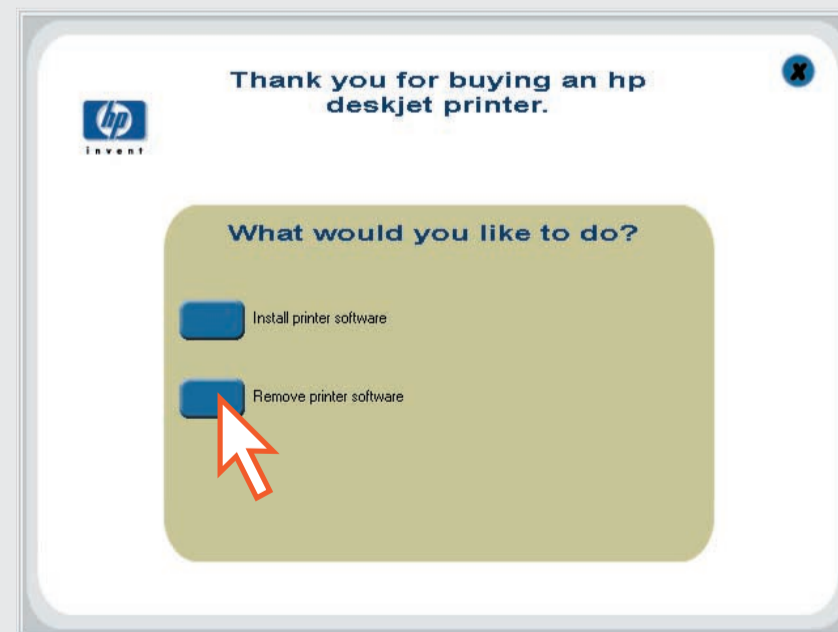


Nothing works? Do the following:

- 1 Remove hp printer software CD from computer.
- 2 Disconnect cable and power cord from printer.
- 3 Reinsert hp printer software CD into computer.
- 4 Click **Remove printer software** (see screen).
- 5 Return to step 1 on the other side of this poster to setup your printer.

Rien ne fonctionne? Procédez comme suit :

- 1 Retirez de l'ordinateur le CD du logiciel d'impression hp.
- 2 Déconnectez tous les câbles (câble d'alimentation compris) de l'imprimante.
- 3 Réintroduisez le CD du logiciel d'impression hp dans l'ordinateur.
- 4 Cliquez sur l'option de suppression du logiciel d'impression (voir écran).
- 5 Retournez à l'étape 1 (de l'autre côté de ce poster) pour configurer l'imprimante.



Need more help?
Encore besoin d'aide?



www.hp.com/go/support

