

# completing Bluetooth installation

## before using this guide...

Verify that you have done the following:

- set up the printer
- installed a 3Com Bluetooth PC card in your laptop
- know the location of the hp995k.inf file for your language.



# completing Bluetooth installation

## to find the hpf995k.inf file:

- On the dj995 CD, the hpf995k.inf file is under <language abbreviation>/drivers/win2k\_xp. For example, the English hpf995k.inf file is under enu/drivers/win2k\_xp/hpf995k.inf.
- For additional questions on the location of the dj995 driver and hpf995k.inf file, please see your System Administrator.



# completing Bluetooth installation

## open the 3Com Bluetooth Connection Manager

1. Click **Start > Programs > 3Com Mobile > Bluetooth Connection Manager**.

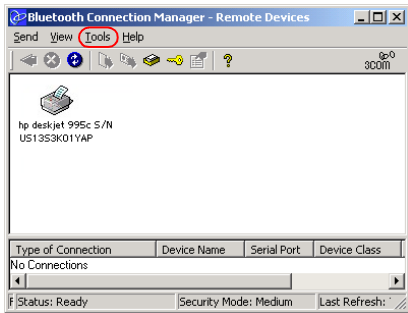
The Bluetooth Connection Manager opens.

Step 1 of 17



# completing Bluetooth installation

## open the Bluetooth COM Ports box



2. Click Tools > Com Port.

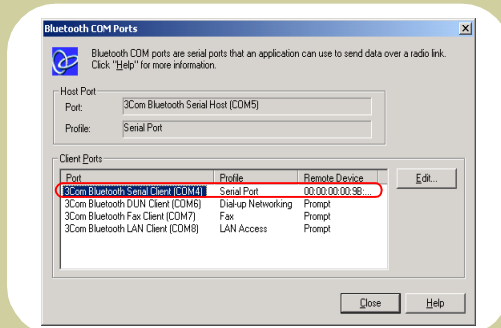
The Bluetooth COM Ports dialog box opens.

Step 2 of 17



# completing Bluetooth installation

## note the Bluetooth COM port



3. Note the 3Com Bluetooth Serial Client COM port.

In this example the COM port is COM4.

Step 3 of 17



# completing Bluetooth installation

## open the printers folder

4. Click **Start** > **Settings** > **Printers**.

The Printers folder opens.

Step 4 of 17



# completing Bluetooth installation

## open the add printer wizard

5. Double-click the Add Printer icon.

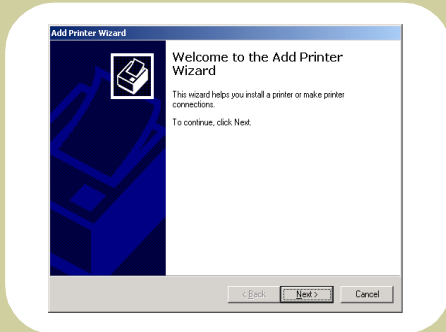
The Add Print dialog box opens.

Step 5 of 17



# completing Bluetooth installation

## Add Printer Wizard



6. Click **Next >** on the Welcome to the Add Printer Wizard screen.

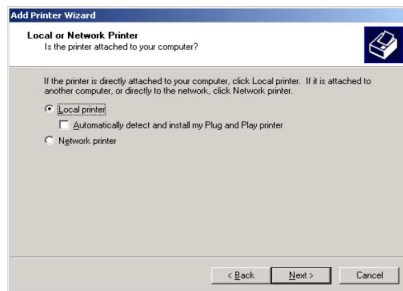
Step 6 of 17





# completing Bluetooth installation

## select local printer



7. Select **Local printer** in the Local or Network Printer dialog box.

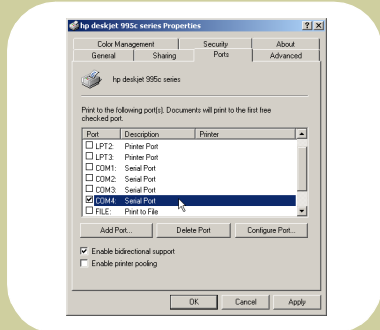
Make sure automatically detect and install my Plug and Play printer is not selected.

Step 7 of 17



# completing Bluetooth installation

## select the Bluetooth port



8. Select the Bluetooth wireless COM port that you noted in step 3.

In this example, the Bluetooth wireless COM port is COM4. The port may be different on your computer.

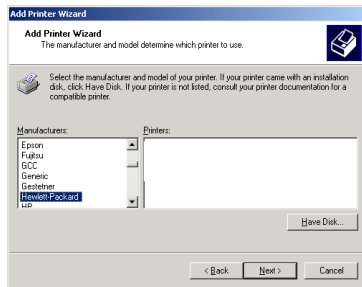
Be sure to select the COM port noted in step 3.

Step 8 of 17



# completing Bluetooth installation

click have disk



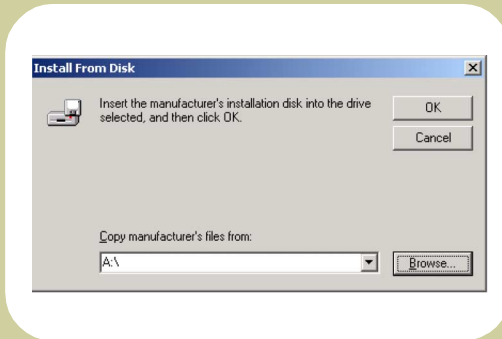
9. Click the **Have Disk** button and then click **Next**.

Step 9 of 17



# completing Bluetooth installation

**click browse**



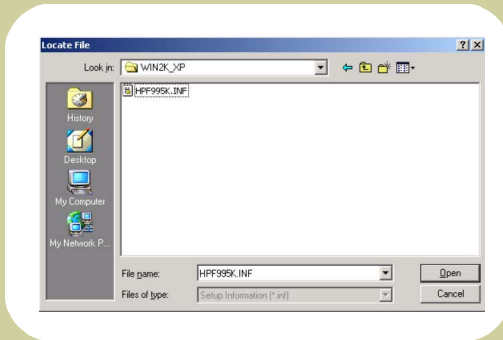
10. **Browse** to the hpf995k.inf file in your desired language.

Step 10 of 17



# completing Bluetooth installation

## highlight the hpf995k.inf file



11. Highlight the hpf995k.inf file and click Open.

Step 11 of 17



# completing Bluetooth installation

## close the install from disk screen

12. Click **OK** to close the Install from Disk dialog box.

Step 12 of 17



# completing Bluetooth installation

## follow screen directions

13. Click **Next** > to follow the screen directions for naming the printer and sharing the printer.

When you are asked if you want to print a test page, click **No**.

Step 13 of 17



# completing Bluetooth installation

## complete the driver installation



14. Click Finish to complete the driver installation.

Please wait while files are copied to your system.

Note: Do not cancel the installation.

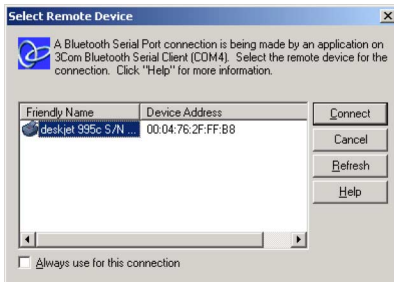
Step 14 of 17





# completing Bluetooth installation

## select remote device



15. If you are prompted to select a remote device **highlight the dj995** and click **Connect**.

Step 15 of 17



# completing Bluetooth installation

## hint: select the right dj995



16. If there are several dj995 printers, **press the cancel (X) button** for 2 seconds to print a Bluetooth diagnostic page.

Match the serial number on the diagnostic page with the serial number on the *Select Remote Device* screen.

Step 16 of 17



# completing Bluetooth installation

## congratulations—installation complete

17. Test the printer's Bluetooth wireless printing feature by printing a small document.

For printing instructions, go to HP's Bluetooth wireless printing Website, then download the document *Bluetooth wireless printing: hp deskjet 995c series printer*.

 Return to HP's Bluetooth wireless printing Website

Step 17 of 17

