

hp custom quilt label kit

getting started

contents

introduction	.3
let's get started	.4
installing and starting the program	.4
installing the program on your computer	.4
running the program from the CD-ROM	.6
overview of the program	.6
choosing a template	.6
overview of main window	.8
getting help	.9
online help	.9
contacting hp customer care	.10
hp support web sites	.10
hp support email	.10
hp support by phone	.11
quilting web site	.11
creating a story label	.12
selecting a template	.12
adding borders	.12
adding images and clip art	.14

adding text	15
saving your label	17
printing your label	17
creating a matching gift card	18
step 1: create the front and back of your gift card	18
selecting a template	18
adding backgrounds	19
adding images	20
adding text	21
saving the front and back of your gift card	22
step 2: create the inside of your gift card	22
selecting a template	22
adding backgrounds	22
adding clip art	23
adding text	24
saving the inside of your gift card	25
printing your gift card	25
advanced creativity	27

introduction

As you complete each priceless quilt, a story is waiting to be told. You've invested so much of yourself, your time, and your creativity. How can you ensure that your quilt's history is told and remembered as it's passed from hand to hand? And if you're giving your quilt as a gift, how can you make the presentation even more impressive and meaningful?

The HP Custom Quilt Label Kit is the perfect solution, allowing you to create one-of-a-kind, professional-quality labels for your quilt to ensure that its story is told and its quilter is remembered. And, as a perfect companion to each quilt, you can make a coordinated, high-quality gift card conveniently and economically.

The HP Custom Quilt Label Kit contains:

- **A variety of layouts for Story Labels and Made-By Labels**

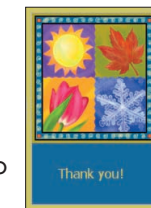
Story Labels are 8 1/2" x 11" labels for sharing a story, poem, verse from a song, or the fascinating details of your quilt. For example, is it for a particular occasion? Does the fabric you've selected have special meaning? How did you piece it together?



Made-By Labels are smaller-sized labels (four labels on an 8 1/2" x 11" sheet) that contain essential information like your name, the date the quilt was completed, and the occasion. They can also include your photograph.



- **Easy-to-use layouts for gift cards** that match the labels and add a truly unique touch to a quilt that you're presenting as a gift.
- **Hundreds of high-quality images and clip art** for use in your labels and gift cards. Images, phrases, clip art, borders, and backgrounds are grouped into various "themes" to help narrow your search for appropriate artwork and phrases.
- **Carefully crafted phrases** for expressing your thoughts in Story Labels or gift cards.



let's get started

To learn the basics of using the HP Custom Quilt Label Kit, spend a few minutes following our instructions and creating the projects in this guide. This is the fastest way to become acquainted with the software so you can start creating your own designs right away! Here's what you'll do:

1. Install and start the program.
2. Get an overview of the program's features.
3. Create your first designs:
 - First you'll make a Story Label.
 - Then you'll make a matching gift card.
4. Explore other creative ideas for using the HP Custom Quilt Label Kit and your printer in your next quilting projects.

Note: Screen captures of the HP Custom Quilt Label Kit shown in this booklet are from the Microsoft® Windows® XP operating system. While the screens you see may look different on your computer, the functionality of the program works just the same. Please follow our instructions exactly, even if the screens you see look slightly different.

installing and starting the program

You have two options for installing the program:

- Install it on your computer.
- Don't install it on your computer, but run it from the CD-ROM. (This is particularly useful if you have limited space on your hard drive.)

Below are instructions for installing and starting the program using each option.

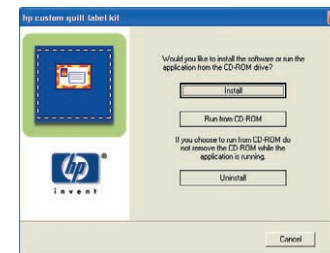
installing the program on your computer

Windows

1. Insert the CD into your CD-ROM drive. Setup starts automatically.

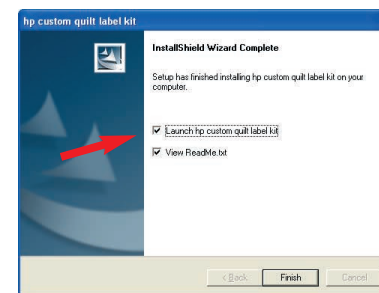
Note: If Setup does not start automatically, open Windows Explorer, locate and double-click the letter for your CD-ROM drive, then double-click **Setup.exe**.

2. Click **Install** and follow the on-screen instructions to install the program.
3. If prompted, restart your computer.



When installation is complete, you see a window similar to this one.

4. Make sure **Launch hp custom quilt label kit** is selected.
5. Keep the View ReadMe.txt option selected if you'd like to read last-minute notes about the program.
6. Click **Finish**.



Macintosh

1. Insert the CD into your CD-ROM drive.

Note: If the installer does not start automatically, double-click the **hp custom quilt label kit** CD icon on your desktop. Then double-click the installer icon.

2. Click **Install**. Follow the on-screen instructions to install the program.
3. If prompted, restart your computer.

running the program from the CD-ROM

Windows

1. Insert the CD into your CD-ROM drive. Setup starts automatically.

Note: If Setup does not start automatically, open Windows Explorer, locate and double-click the letter for your CD-ROM drive, then double-click **Setup.exe**.

2. Click **Run from CD-ROM**.

Macintosh

1. Insert the CD into your CD-ROM drive.

Note: If the installer does not start automatically, double-click the **hp custom quilt label kit** CD icon on your desktop. Then double-click the installer icon.

2. Click **Run from CD-ROM**.

To start the HP Custom Quilt Label Kit in the future:

Windows

1. Click the **Start** button.
2. Select **All Programs**.
3. Select **hp custom quilt label kit**.
4. Select **hp custom quilt label kit** again.

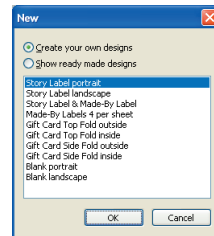


Macintosh

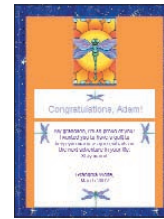
1. Locate the folder where you installed the software.
2. Double-click the **hp custom quilt label kit** icon.

overview of the program choosing a template

When you start the program, you can select from a variety of blank templates or ready-made designs for your labels and gift cards. Ready-made designs are an excellent, inspiring starting point.



We've shown some of the ready-made designs below, along with descriptive names of the templates we used, so you can find the template that best suits your interests.



Story Label portrait



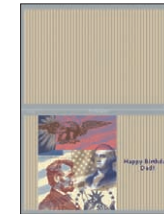
Story Label landscape



Story & Made-By Label



Made-By Labels 4 per sheet



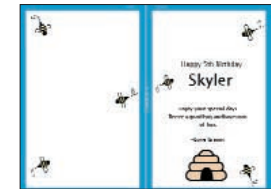
Gift Card Top Fold outside



Gift Card Top Fold inside

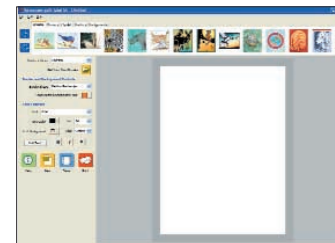


Gift Card Side Fold outside

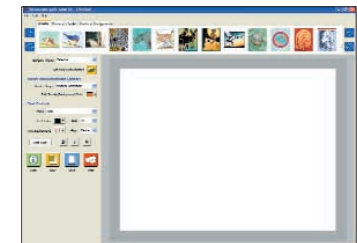


Gift Card Side Fold inside

We've also included blank templates:



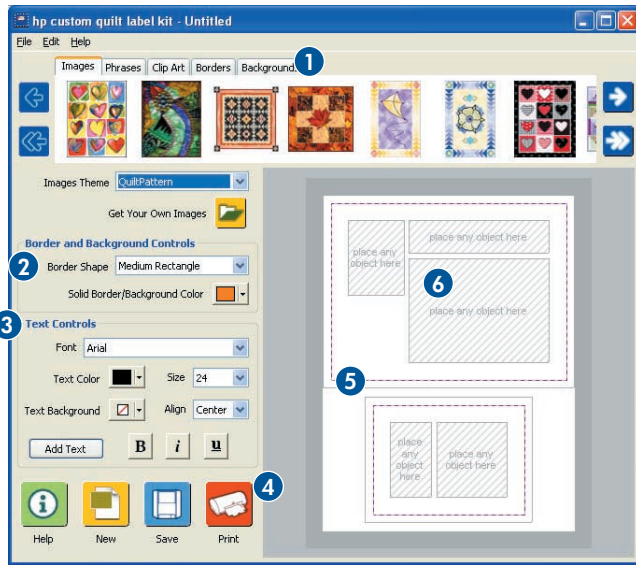
Blank portrait



Blank landscape

overview of main window

The main window displays the most common features in convenient locations so you can quickly start creating designs.




1. **Tabs:** Contain images, phrases, clip art, borders, and backgrounds for use in your label or gift card designs.
2. **Border and Background Controls:** Allow you to change the look of borders (e.g., thick oval or thin rectangle) or backgrounds (e.g., color). Borders and backgrounds are the same design, but borders are cut out in the center to create a frame effect.
3. **Text Controls:** Allow you to add new text and change the look of your text (e.g., font, color, and alignment).
4. **Icon Bar:** Lets you quickly get help, create a new design, save your design, or print your design.

5. **Work Area:** This is where you will add images and text to create your labels, gift cards, and custom designs. This area is a scaled representation of your printable page. Objects will print larger than they're shown.
6. **Placeholders:** Drag and drop images, phrases, clip art, borders, and backgrounds into these boxes.

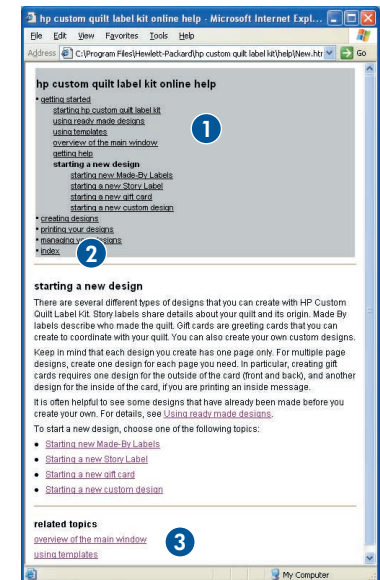
getting help

online help

The online help contains step-by-step instructions for creating Made-By Labels, Story Labels, and gift cards. It also explains how to make your own fabric sheets, how to print your designs, and more. You can access the online help in two ways:

- From the **Help** menu, choose **Help**.
- Click the **Help** button. 

1. **Contents:** Displays in the gray box at the top of each help page. Click a title to view its help page. The title of the current help page appears in bold within the list of available topics.
2. **Index:** Displays when you click Index in the Table of Contents. Click the item you're looking for from the alphabetical list of topics.
3. **Related topics:** Displays at the bottom of many help pages. Click a topic in the list to view information that is related to the current help page.



contacting hp customer care

The HP Customer Care Center provides expert advice on using and solving problems with your HP Custom Quilt Label Kit software.

HP's Customer Care support process works most effectively if you look for assistance in the following order:

1. Use the online help.
2. For information regarding your printer, refer to your printer's documentation and support process.
3. Use the Internet any time of the day to access HP e-support:
 - Check HP's Web support pages for product help.
 - Send HP an email.
4. Contact HP Customer Care by phone during regular business hours.

Note: Support for HP Custom Quilt Label Kit is provided only in English.

hp support web sites

If you have access to the Internet, you can obtain a wide variety of usage tips and support information about your software, as well as support for any HP product.

- For the HP Custom Quilt Label Kit support page, go to welcome.hp.com/country/us/eng/support.htm and click "**printing**" in the **Software** list.
- For support on any HP product, visit the HP Web site for the latest support information at www.hp.com/support.

hp support email

One-to-one email gives direct answers to your questions from an HP support technician. Email support is a great way to ask technical questions or obtain answers that are tailored to your specific need. Enter your question on a Web form and receive an email reply. You can find links to the email Web form on the HP quilting and support Web sites.

hp support by phone

Within the free support period, HP provides telephone support free of charge. However, standard phone company charges apply.

Before placing a call for help, remember to try one of the other free support options listed above and to visit www.hp.com/go/quilting. If the problem is not solved using the above options, call an HP Customer Care service technician while you are in front of your computer. For faster service, please be prepared to provide information about what has been tried to solve the problem, as well as the following:

- The computer's operating system and your printer manufacturer and model number, if your problem is a printing issue.
- Messages displayed around the time the situation occurred.
- Has this happened before? Can it be re-created?

When you're ready, contact the HP Customer Care Center at (208) 323-2551 and say "HP Custom Quilt Label Kit" when prompted for your complete product name.


Note: Support for HP Custom Quilt Label Kit is provided only in English.

quilting web site

Visit the online HP quilting community and get free project ideas with instructions, templates, patterns, expert tips, supply lists, and more:

www.hp.com/go/quilting




tip:

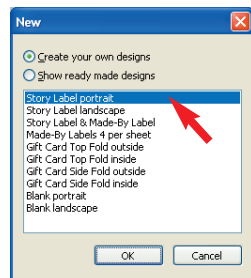
Remember, online help is a great place to go if you have questions not covered in this guide. Just click the **Help**  button.

creating a story label

Let's create this Story Label.

selecting a template

1. To start the HP Custom Quilt Label Kit, follow the instructions on page 6. If the program is already open, click the **New** button. 
2. In the next screen, select **Story Label portrait** and click **OK**. You see the selected template in the work area on the right.
3. Click this box in the upper right corner to maximize your work space. This will make the window larger.
 - Windows: 
 - Macintosh: Or, click and drag the bottom right corner of the window down and to the right.



tip:

You can easily add your own image or photo for use as a border or a background. This is a great way to personalize your design!

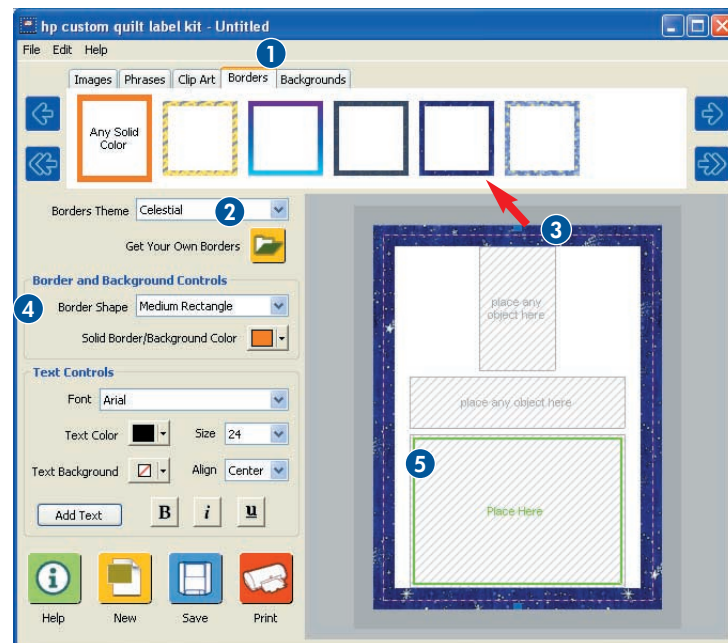
Imagine that you have a photo of pansies from your garden that you would like to use as a border for your label.

1. Just click the **Borders** or **Backgrounds** tab.
2. Click **Get Your Own Borders** or **Backgrounds**.
3. Bring the photo into the HP Custom Quilt label Kit. Give it a try!

adding borders

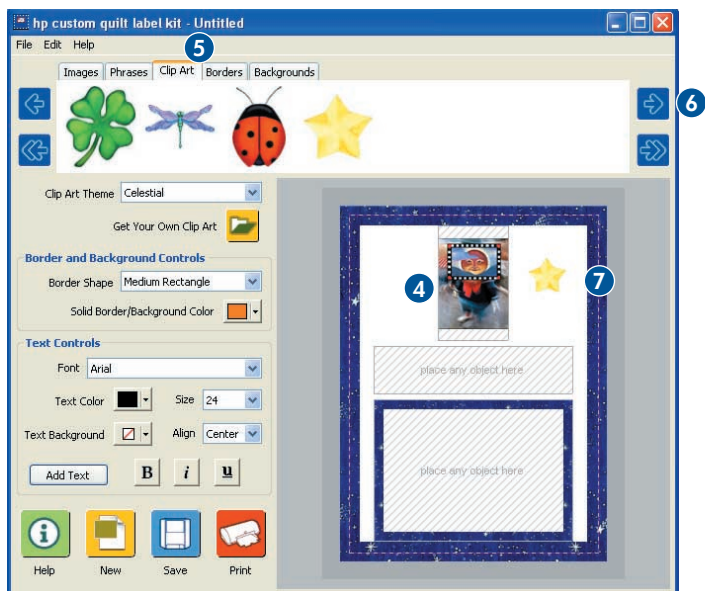
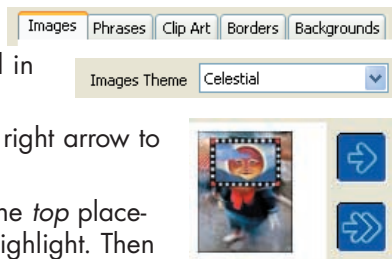
Borders are a nice way to add pizzazz to your designs. You can add borders to the edge of your design, or to a specific placeholder—for example, to frame a photo.

1. Click the **Borders** tab.
2. From the **Borders Theme** list, select **Celestial**.
3. Click on the blue stars border and it will fill the entire area around the label.
4. From the **Border Shape** list, select **Medium Rectangle**.
5. Again in the **Borders** tab, click and drag the dark blue stars border to the bottom placeholder until you see a green highlight. Then release the mouse button.



adding images and clip art

1. Click the **Images** tab.
2. Make sure **Celestial** is selected in the **Images Theme** list.
3. Click repeatedly on the single right arrow to find the image shown here.
4. Click and drag the image to the *top* placeholder until you see a green highlight. Then release the mouse button.
5. Click the **Clip Art** tab.
6. Use the single right arrow to find the yellow star image.
7. Click and drag the star into the space to the right of the image you placed in Step 4. Then release the mouse button.
8. Click once on the star to select it. Use the resizing handles on the outer corners to make the star slightly smaller.
9. Click and drag the resized star to position it as shown. Then release the mouse button.



tip:

Notice the dashed line around the outside edges of the template. This is a 1/4" seam allowance, which you can use as a guide as you're placing objects.

The dashed line will be printed so you can use it as a guide for folding and sewing the fabric. You can turn the seam allowance on or off by right-clicking (Windows) or CTRL-clicking (Macintosh) in the template and selecting **Seam Allowance**.

adding text

Now, let's add text to your label.

1. Click the **Add Text** button in the Text Controls area. A text box appears.
2. Type, **"To Dad, our astronomy buff. This quilt was made especially for you. Sweet Dreams August 2002."**
3. In the Text Controls area, make these changes:
 - Font: **Arial**
 - Text Color: **Blue**
 - Size: **24**
4. Click anywhere outside the text box. Then, click and drag the text box into the bottom placeholder until you see a green highlight. Release the mouse button.


tip:

Consider including these details in your quilt's Story Label:

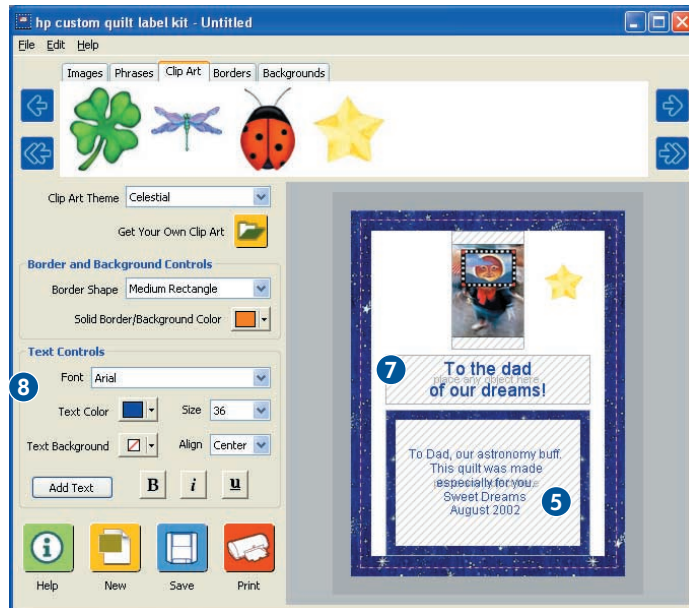
- How long did it take to make?
- When will it be given?
- To whom will it be given?
- Is it for a particular occasion?
- Does the fabric you've used have special meaning?
- What pattern have you used?
- Why have you chosen this color scheme?
- What special meaning does it hold for you?

tip:


Changes you make in the Text Controls area apply to the entire text box. Create separate text boxes to vary the text styles.

- Click and drag the text box until you see the resizing handles. Then use the resizing handles to make the text fit inside the border, as shown.
- Click the **Add Text** button.  A new text box appears.
- Type **"To the dad of our dreams!"**
- In the Text Controls area, make these changes:
 - Font: **Arial**
 - Text Color: **Blue**
 - Size: **36**
- Click anywhere outside the text box. Then, click and drag the text box into the middle placeholder until you see a green highlight. Release the mouse button.

Your Story Label is completed!




saving your label

- Click the **Save** button. 
- Create a new folder on your hard drive and name it, **"My Labels and Cards."**
- For a file name, use **"astronomy story label."**
- Click **Save**.

tip:

Here's a quick overview of how to print and apply your label:

Step 1: Print the label on a specially treated fabric sheet, which goes right into your printer.

You can purchase the sheets, or make your own using your favorite cotton fabric. Making your own fabric sheets requires some planning and time. But it can be easy, fun, and economical. To learn more, click the **Help** button, click **"printing your designs,"** and then click **"using fabric sheets."** 

Step 2: Remove the backing from the sheet.

Step 3: Rinse the fabric sheet in water to remove any excess ink following the manufacturer's recommendations.


Step 4: Cut out the fabric label and sew it onto your quilt.

printing your label


Note: Before printing, review the detailed tips and instructions in the online topic called **"printing your designs."** Exactly how you make selections for printing depends on your printer and the type of media you are printing on. Refer to your printer's help for more information.

1. Load plain paper into the paper tray of your inkjet printer first to test the results. Then print on fabric sheets when you're ready.
2. Follow these steps:

Windows

- a. Click the **Print** button. 
 - b. Click the **Change Settings** button.
 - c. Click the **Properties** button.
 - d. Select the options for **Best** print quality and **Plain Paper**. Click **OK** to begin printing.
3. Now you can cut out your label and sew it onto your quilt.

Macintosh


- a. In the **File** menu, select **Page Setup**.
- b. If given the options, select **Best** print quality and **Plain Paper**. Mac OS X users, be sure to select your printer from the **Format For** list. Click **OK**.
- c. Click the **Print** button. 
- d. Click the **Print Now** button.

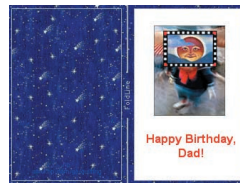
creating a matching gift card

You'll be creating a two-sided gift card: one side will be the outside and the other the inside. These are two separate designs using the HP Custom Quilt Label Kit.

step 1: create the front and back of your gift card

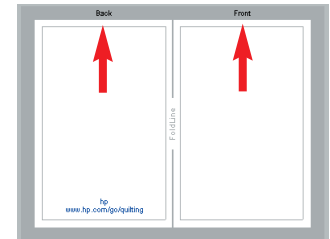
selecting a template

1. To start the HP Custom Quilt Label Kit, follow the instructions on page 6. If the program is already open, click the **New** button. 



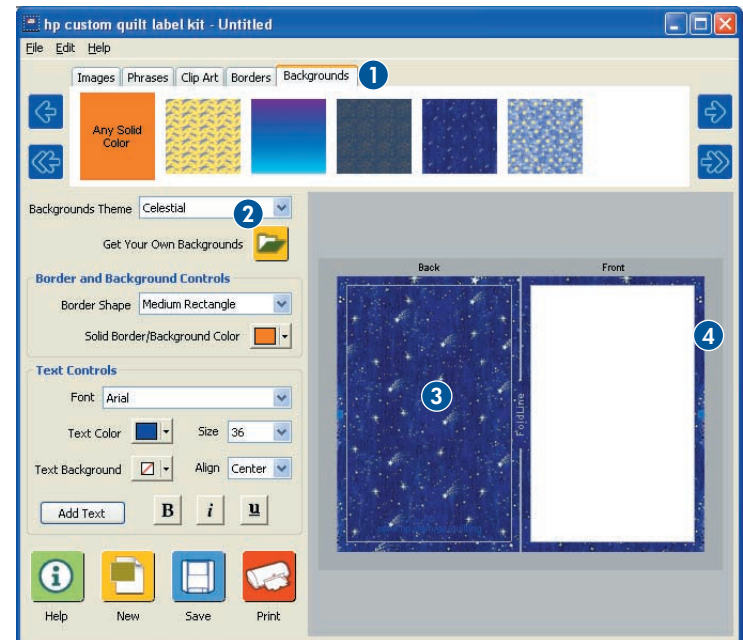
2. In the next screen, select **Gift Card Side Fold outside** and click **OK**.

You see the selected template in the design area. Notice the labels for the Back and Front of the card.



adding backgrounds

1. Click the **Backgrounds** tab.
2. From the **Backgrounds Theme** list, select **Celestial**.
3. Click and drag the dark blue stars background to the left (back) side of the card until you see a green highlight. Then release the mouse button.
4. Click the blue stars background and it will fill the entire area around the card.



adding images

1. Click the **Images** tab.
2. From the **Images Theme** list, select **Celestial**.
3. Click and drag the image shown to the right (front) side of the card until you see a green highlight. Then release the mouse button.
4. Use the resizing handles on the outer corners of the image to resize it, as shown.




adding text

Now, let's add text to the front of your card.

1. Click the **Add Text** button. A text box appears.
2. Type, "**Happy Birthday, Dad!**"
3. In the Text Controls area, make these settings:
 - Font: **Arial**
 - Text Color: **Red**
 - Size: **36**
 - Align: **Center**
 - Click the **B** (bold) button
4. Click anywhere outside the text box. Then, click and drag the text box under the image until you see a green highlight. Release the mouse button.
5. Click the text box and use the left and right resizing handles to make the text fit inside the border, as shown.



saving the front and back of your gift card


1. Click the **Save** button. 
2. Go to the folder you created earlier called "My Labels and Cards."
3. For a file name, use "astronomy card outside."
4. Click **Save**.

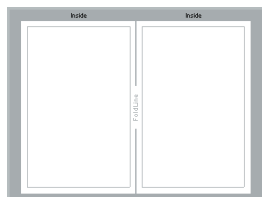
tip:

In the future, you can open a saved design in the HP Custom Quilt Label Kit by selecting **Open** in the **File** menu, locating your saved design, selecting it, and clicking **Open**.

step 2: create the inside of your gift card

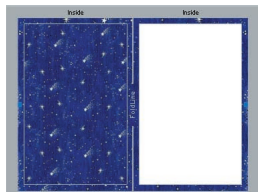
selecting a template

1. To start the HP Custom Quilt Label Kit, follow the instructions on page 6. If the program is already open, click the **New** button. 
2. In the next screen, select **Gift Card Side Fold inside** and click **OK**. You see the selected template in the work area on the right.



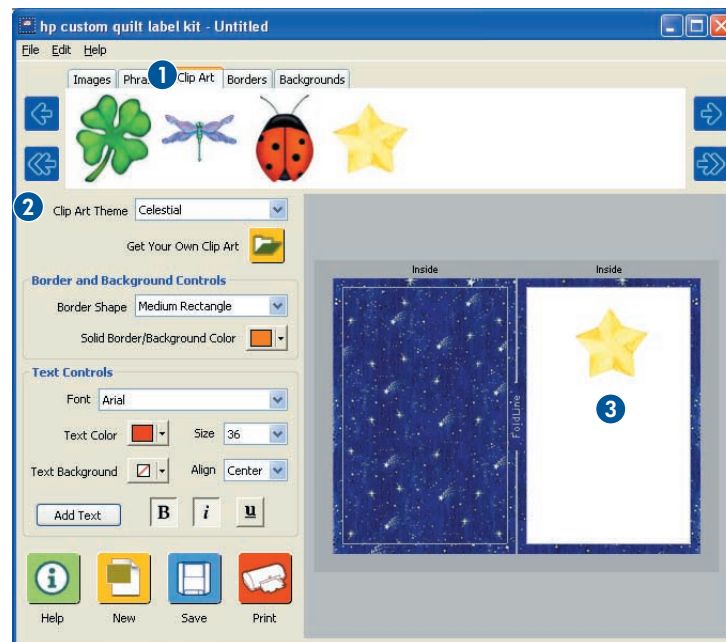
adding backgrounds

Follow the steps on page 19 to add backgrounds to the inside of your card to look like this:



adding clip art

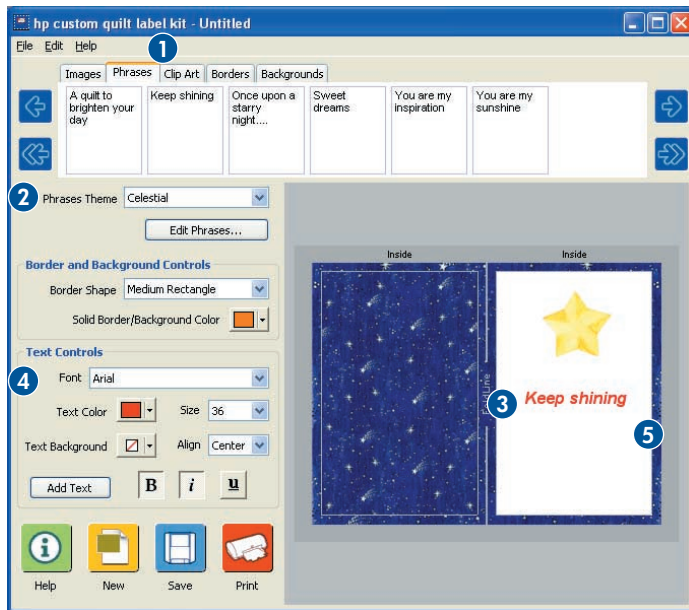
1. Click the **Clip Art** tab.
2. From the **Clip Art Theme** list, select **Celestial**.
3. Click and drag the star to the right side of the card until you see a green highlight. Then release the mouse button. Position it as shown.




adding text

Now, let's add text to the inside of your card using a phrase.

1. Click the **Phrases** tab.
2. From the **Phrases Theme** list, select **Celestial**.
3. Click and drag the "Keep Shining" phrase into the right side of the card until you see a green highlight. Then release the mouse button.
4. In the Text Controls area, make these changes:
 - Font: **Arial**
 - Text Color: **Red**
 - Size: **36**
 - Align: **Center**
 - Click the **B** (bold) and **i** (italics) buttons.
5. Click the text box and use the left and right resizing handles to make the text fit inside the border, as shown.



saving the inside of your gift card

1. Click the **Save** button. 
2. Go to the folder you created earlier called "My Labels and Cards."
3. For a file name, use "astronomy card inside."
4. Click **Save**.

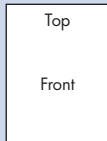
printing your gift card

How you print your gift card depends on what type of gift card you have created.

- For our example, we created a **two-sided gift card**. For two-sided cards, you print the front and back of the card on one side of the paper. Then you put that paper back into the printer to print the message on the inside of the card.
- **One-sided gift cards** are printed on the front and back only, with one pass through the printer. The inside is left blank, allowing you to write your personal message.

tip:

To learn how to feed paper in your printer so it prints on the correct side and with the correct orientation, use a blank sheet of plain paper and write, "Top" and "Front" on it as shown here:




Now place this sheet into the printer paper tray and print the outside of the card. Note the locations of your writing relative to the printed output. Then, insert the sheet into the paper tray again and print on the inside of the card.

step 1: printing the front and back of your gift card

Note: Follow these instructions even if your printer has a duplex (2-sided) printing option. Before printing, review the detailed tips and instructions in the online topic called "**printing your designs.**" Exactly how you make selections for printing depends on your printer and the type of media you are printing on. Refer to your printer's help for more information.

1. Load plain paper into the paper tray of your inkjet printer first to test the results. Then print on card stock or other paper for your gift card when you're ready.
2. Open the design for the outside of your gift card. (The file name for our project is **astronomy card outside.soq**.)
3. Follow these steps:

Windows

- a. Click the **Print** button. 
- b. Click the **Change Settings** button.
- c. Click the **Properties** button.
- d. Select the options for **Best** print quality and **Greeting Card** paper, if available. Click **OK**. Click **OK** again to begin printing.

Macintosh

- a. In the **File** menu, select **Page Setup**.
- b. If given the options, select **Best** print quality and **Greeting Card** paper, if available. Mac OS X users, be sure to select your printer from the **Format For** list. Click **OK**.
- c. Click the **Print** button. 
- d. Click the **Print Now** button.

Note: If the colors aren't quite right, try experimenting with other print settings until you find the ones that work best with your printer.

4. When you take the paper out of the printer, allow the ink to dry completely before touching it or printing the inside of your card.

step 2: printing the inside of the gift card

1. Open the design for the inside of the gift card. (The file name for our project is **astronomy card inside.soq**.)
2. Place the printed card in the paper tray. The proper placement in the paper tray depends on your printer. For printers where you load paper in the front, insert the paper with the already printed side up.
3. Repeat the steps above to print the inside of the gift card.
4. Now you can use a pen to sign your gift card.

advanced creativity

Now that you've learned all the basics, imagine what more you can do with the HP Custom Quilt Label Kit, your printer, and fabric sheets!

Here are some other ideas for inspiration:

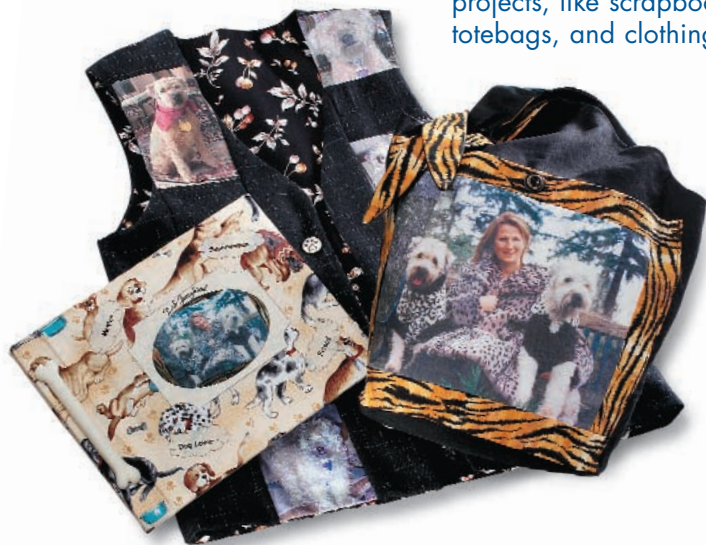
Recall images of family vacations and tell their stories on the back side of washable placemats for your dining table.



Make milestone events even more special with matching keepsake quilts, Story Labels, and gift cards.

advanced creativity

Print your favorite photos of your furry friends on fabric sheets to create theme projects, like scrapbooks, totebags, and clothing.



Print custom pictures and text onto fabric sheets and sew the label onto doggy raincoats or bandannas.



advanced creativity



Bring your flower garden indoors by taking digital photos or scanning dried flowers and using them in your quilting projects, like these decorative throw pillows and sachets.



Design your own fabric sheets to create these soft, sculptured chickens—use beads and yarn to create a whimsical string of chickens or use them individually as pin cushions.

advanced creativity

Replace ordinary framed photos with window pane quilts—a unique way to capture priceless childhood moments.



advanced creativity



Celebrate and share your family's ancestry through one-of-a-kind genealogy quilts using scanned photographs.

advanced creativity



Colorize a digital photo using an image editing tool to create vibrant, artistic quilts.

tip:

Take a moment to visit the online HP quilting community for more unique project ideas!

www.hp.com/go/quilting