

table of contents

notices

[notices and acknowledgements](#)

[terms and conventions](#)

[accessibility](#)

special features

getting started

[printer features](#)

[buttons and lights](#)

[paper trays](#)

[250-sheet plain paper tray](#)

[print cartridges](#)

[automatic paper-type sensor](#)

[two-sided printing accessory \(duplexer\)](#)

[connectivity](#)

printing

[print settings](#)

[advanced features](#)

[print status box](#)

[printing a document](#)

[changing default settings](#)

[printing digital photographs](#)

[two-sided printing](#)

[using the automatic paper-type sensor](#)

[selecting between paper trays](#)
[printing on a different first page](#)
[printing a screen image](#)
[watermarks](#)
[plain paper](#)
[envelopes](#)
[transparencies](#)
[labels](#)
[index cards and other small media](#)
[photographs](#)
[greeting cards](#)
[posters](#)
[banners](#)
[iron-on transfers](#)

maintenance

[replacing print cartridges](#)
[calibrating print cartridges](#)
[automatically cleaning print cartridges](#)
[manually cleaning print cartridges](#)
[maintaining print cartridges](#)
[maintaining the printer body](#)
[refilling print cartridges](#)
[removing ink from skin and clothing](#)
[tools](#)

troubleshooting

[checking the print cartridge status](#)
[printer is not printing](#)
[problems with printouts](#)

[printer lights are flashing or on](#)

[printer is too slow](#)

[two-sided printing problems](#)

specifications

[printer specifications](#)

[two-sided printing accessory \(duplexer\) specifications](#)

[250-sheet plain paper tray specifications](#)

[minimum system requirements](#)

[environmental statement](#)

[print cartridge recovery](#)

[limited warranty](#)

[regulatory notices](#)

index

notices

- [notices and acknowledgements](#)
- [terms and conventions](#)
- [accessibility](#)

notices and acknowledgements

hewlett-packard company notices

The information contained in this document is subject to change without notice.

Hewlett-Packard (HP) makes no warranty of any kind with regard to this material including, but not limited to, the implied warranties of merchantability and fitness for a particular purpose.

Hewlett-Packard shall not be liable for any errors or for incidental or consequential damages in connection with the furnishing, performance, or use of this material.

All rights reserved. Reproduction, adaptation, or translation of this material is prohibited without prior written permission of Hewlett-Packard, except as allowed under copyright laws.

acknowledgments

Microsoft, MS, MS-DOS, Windows, and XP are registered trademarks of Microsoft Corporation.

TrueType is a U.S. trademark of Apple Computer, Inc.

Adobe and Acrobat are trademarks of Adobe Systems Incorporated.

Copyright 2002 Hewlett-Packard Company

terms and conventions

The following terms and conventions are used in the *user's guide*.

terms

HP Deskjet printers may be referred to as the **HP printer** or **printer**.

symbols

The > symbol guides you through a series of software steps. For example:

Click **File** > **Print**.

cautions and warnings

A **Caution** indicates possible damage to the HP Deskjet printer or to other equipment. For example:

Caution! Do not touch the print cartridge ink nozzles or copper contacts. Touching these parts will result in clogs, ink failure, and bad electrical connections.

A **Warning** indicates possible harm to yourself or to others. For example:



Warning! Keep both new and used print cartridges out of the reach of children.

icons

A **Note** icon indicates that additional information is provided. For example:



For great results use HP products.

A **Mouse** icon indicates that additional information is available through the **What's This?** help feature. For example:



To find more information about options on each tab screen, point to an option and click the right mouse button to display the **What's This?** dialog box. Click **What's This?** to view more information about the selected option.

A **Printing Instructions** icon indicates that a description of print options is available in the *user's guide*. For example:



For a description of available print options, see [print settings](#).

accessibility

Your HP printer provides a number of features that make it accessible for people with disabilities.

visual

The printer software is accessible for users with visual impairments or low vision through the use of Windows accessibility options and features. It also supports most assistive technology such as screen readers, Braille readers, and voice-to-text applications. For users who are color blind, colored buttons and tabs used in the software and on the HP printer have simple text or icon labels that convey the appropriate action.

mobility

For users with mobility impairments, the printer software functions can be executed through keyboard commands. The software also supports Windows accessibility options such as StickyKeys, ToggleKeys, FilterKeys, and MouseKeys. The printer doors, buttons, paper trays, and paper guides can be operated by users with limited strength and reach.

support

For more details about the accessibility of this product and HP's commitment to product accessibility:

- visit HP's Web site at <http://www.hp.com/accessibility>
- email accessibility@hp.com

special features

Congratulations! The hp deskjet 6120 series printer is equipped with several exciting features:

4800 optimized dpi* and PhotoREt: HP's high-resolution printing and expert color science produce outstanding photo quality.

HP's exclusive automatic two-sided printing (duplexer): Save paper by using the automatic [duplexer](#) to print on both sides of the paper, and, because it is automatic, the printer does all the work.

[250-Sheet Plain Paper Tray accessory:](#) Add or change paper less often. This optional tray increases paper capacity to 400 sheets or allows the printer to hold two different paper types at the same time.

long-lasting ink supply: Print more pages with the 42 ml. black print cartridge and optional 38 ml. tri-color print cartridge.

[Automatic Paper-Type Sensor:](#) Printing is automatically optimized for the type of paper — plain, coated, transparency, or photo papers. This eliminates the need to change paper types in the printer driver.

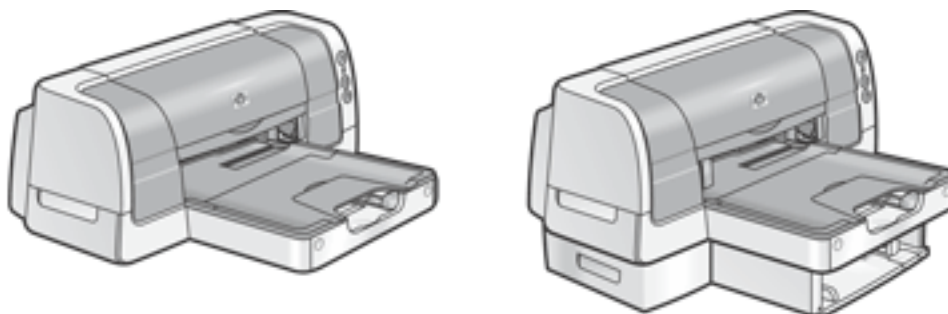
print cancel button: Save paper and ink by cancelling print jobs quickly and easily — just press the **X** button on the printer.

cover page printing: With a 250-Sheet Plain Paper Tray accessory, click the [Use Different First Page](#) button to pick the first page from one tray and the remaining pages from the other. Use this feature to print on letterhead or a cover page for a report.

print screen button: Easily print the content of the computer screen with a push of the Print Screen button on the computer keyboard.

printer assistant: Learn more about the printer features, access printer documentation and electronic support, or update the driver software from the printer assistant icon on the desktop.

*4800 x 1200 optimized dpi color printing on premium photo papers with 1200 x 1200 input dpi.

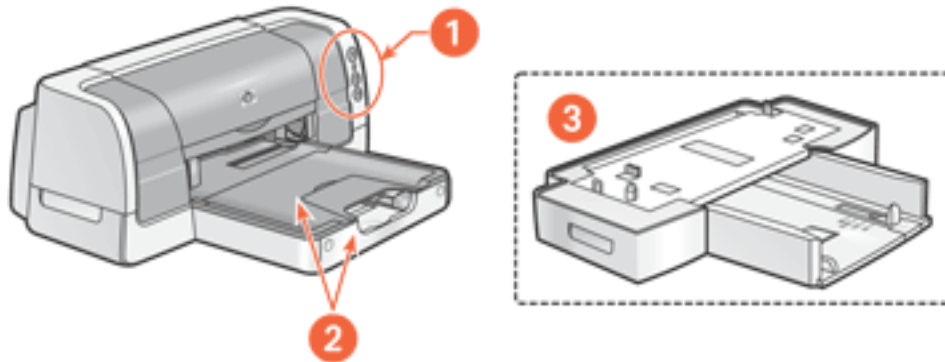


getting started

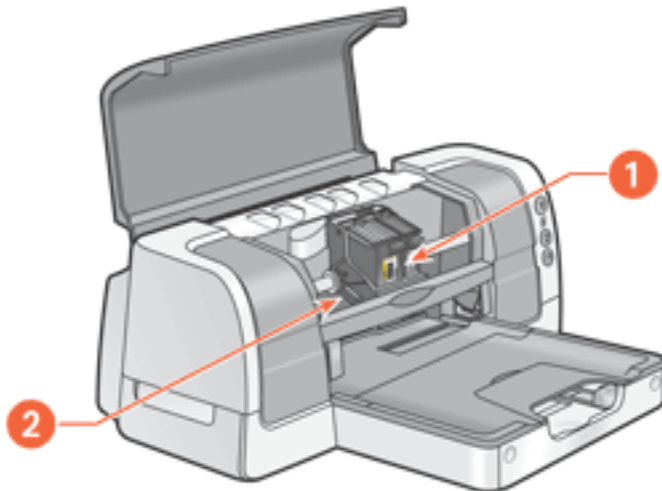
- [printer features](#)
- [buttons and lights](#)
- [paper trays](#)
- [250-sheet plain paper tray](#)
- [print cartridges](#)
- [automatic paper-type sensor](#)
- [two-sided printing accessory \(duplexer\)](#)
- [connectivity](#)

printer features

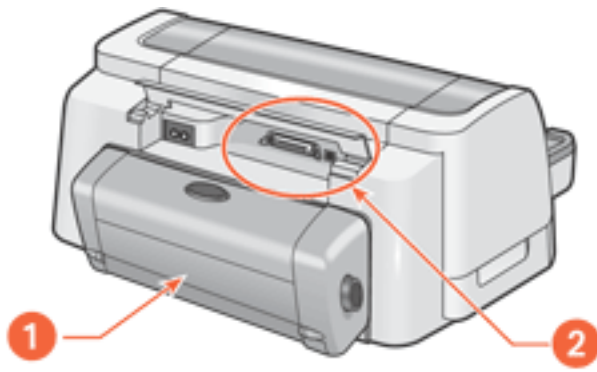
The printer has several features to make printing easier and more efficient.



1. [buttons and lights](#)
2. [In tray and Out tray](#)
3. [250-Sheet Plain Paper Tray](#)



1. [print cartridges](#)
2. [Automatic Paper-Type Sensor](#)

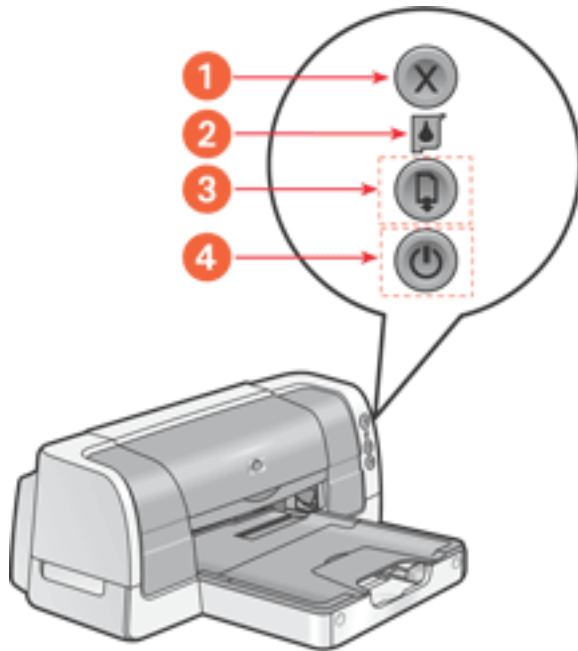


1. [Two-Sided Printing Accessory \(duplexer\)](#)

2. [connectivity](#)

buttons and lights

The printer buttons let you turn the printer on and off, cancel a print job, or resume printing. The lights give you visual cues about the status of the printer.



1. cancel button 2. print cartridge status light 3. resume button and light 4. power button and light

cancel button

Pressing the Cancel button cancels the current print job.

print cartridge status symbol and light

The [Print Cartridge Status light](#) turns on or flashes when a print cartridge needs service or the printer top cover is open.

resume button and light

The Resume light flashes when an action is required such as loading paper or clearing a paper jam. When the problem is solved, press the Resume button to continue printing.

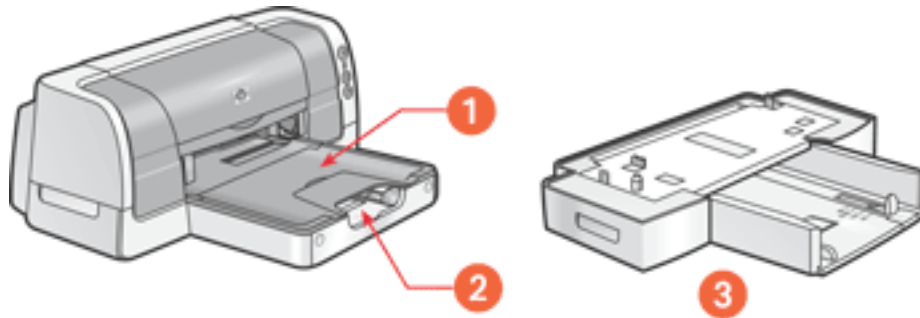
power button and light

The Power button turns the printer on and off. It may take a few seconds for the printer to turn on after pressing the Power button. The Power light flashes when the printer is processing.

Caution! Always use the Power button on the front of the printer to turn the printer on and off. Using a power strip, surge protector, or a wall-mounted switch to turn the printer on and off may cause printer failure.

paper trays

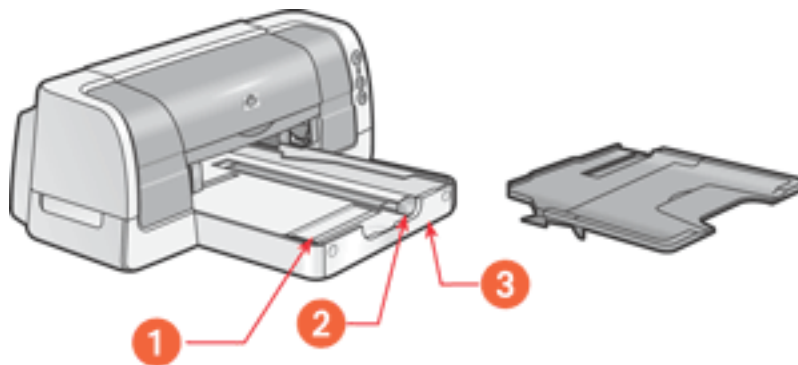
The printer has two paper trays: an In tray and an Out tray. An optional [250-Sheet Plain Paper Tray](#) may be included with your printer. If it is not included, it can be purchased separately from an authorized HP dealer.



1. out tray 2. in tray 3. 250-sheet plain paper tray

In tray

The In tray holds paper or other media to be printed. The length and width guides adjust to the size of the media being used. The In tray door flips down for printing legal paper.



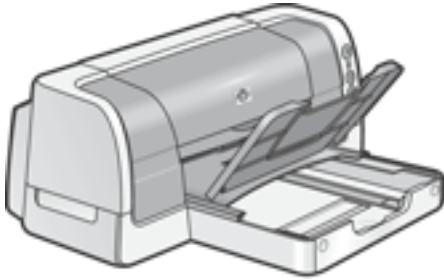
1. paper width guide 2. paper length guide 3. in tray door

To load a specific media type, see [printing](#).

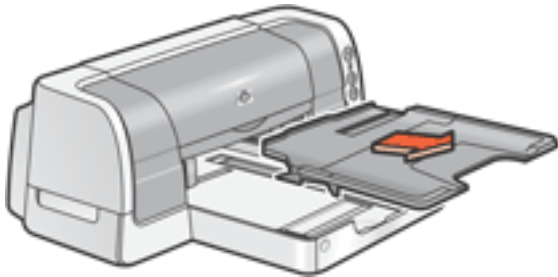
Out tray

Printed pages are deposited in the Out tray.

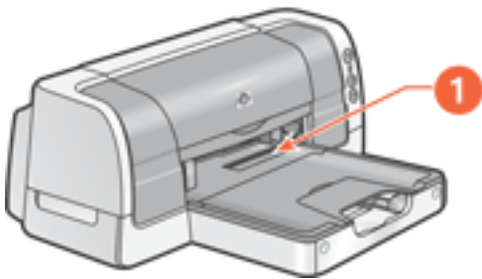
Raise the Out tray to load most paper sizes.



Remove the Out tray to load small media other than single envelopes and single cards.

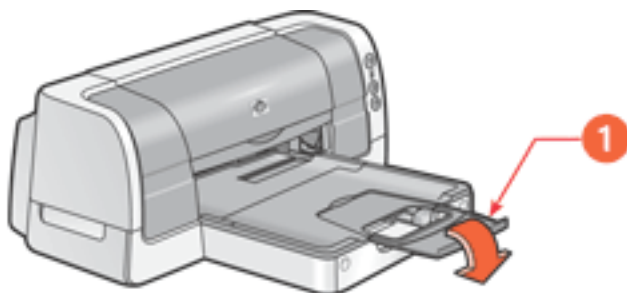


The Out tray has a slot for single envelope and single card printing.



1. single envelope slot

Flip down the Out tray extension to prevent the paper from falling off the tray.



1. out tray extension

250-sheet plain paper tray

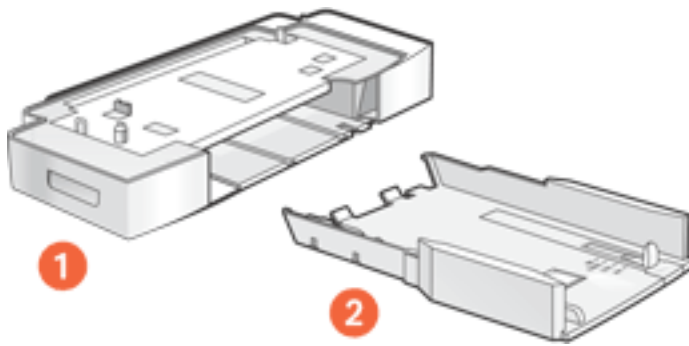


An optional 250-Sheet Plain Paper Tray may be included with your printer. If it is not included, it can be purchased separately from an authorized HP dealer.

The [duplexer](#) must be attached to the printer in order for the printer to use the 250-Sheet Plain Paper Tray. If the duplexer is not attached to the printer, then use the [In tray](#) for printing.

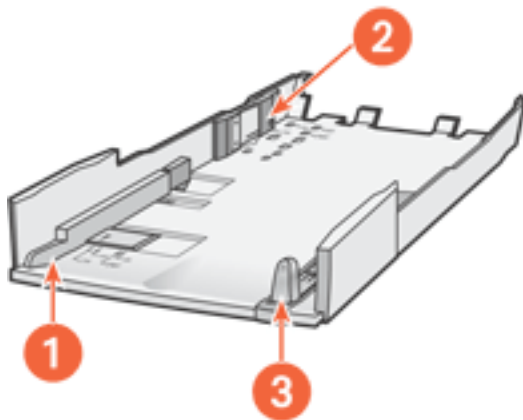
250-sheet plain paper tray description

The 250-Sheet Plain Paper Tray has two parts.



1. base 2. lower tray

The lower tray has three size adjustments.



1. paper width guide 2. paper width fence 3. paper length guide



When changing the paper size in the 250-Sheet Plain Paper Tray, you must set all three size adjustments.

installing the 250-sheet plain paper tray

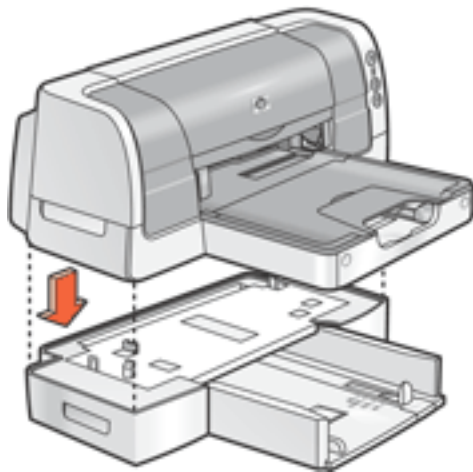


Install the [duplexer](#) before installing the 250-Sheet Plain Paper Tray. The duplexer must be attached to the printer in order for the printer to use the 250-Sheet Plain Paper Tray.

The printer sits on top of the 250-Sheet Plain Paper Tray.

Follow these steps to install the 250-Sheet Plain Paper Tray.

1. Turn off the printer.
2. Place the 250-Sheet Plain Paper Tray in the final location for the printer.
3. Carefully lift the printer and orient it above the 250-Sheet Plain Paper Tray.



4. Gently place the printer on top of the 250-Sheet Plain Paper Tray.

preparing to print with the 250-sheet plain paper tray

Preparing to print with the 250-Sheet Plain Paper Tray involves these steps:

- [set the paper size](#)
- [load paper in the tray](#)



The [Automatic Paper-Type Sensor](#) is not available when printing from the 250-Sheet Plain Paper Tray.

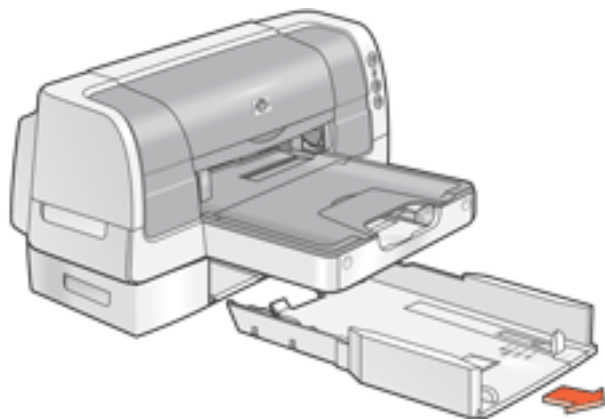
set the paper size

The 250-Sheet Plain Paper Tray can hold Letter, A4, Legal, Executive, and B5 sized paper.

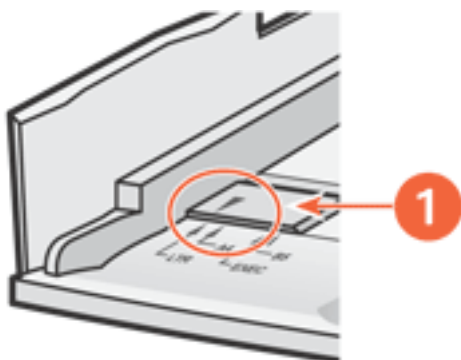
To set the paper size, you must set all three size adjustments located on the lower tray.

Follow these steps to set the paper size in the 250-Sheet Plain Paper Tray:

1. Remove the lower tray from the base.



2. Slide the paper width guide until the arrow is even with the correct setting.

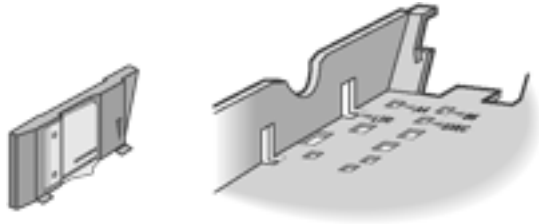


1. align the arrows

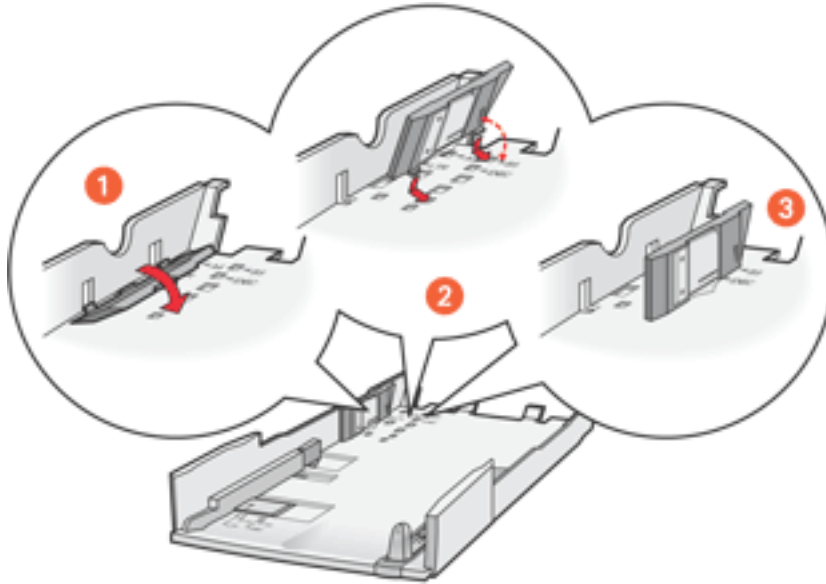


Set the width to **LTR** to use legal-sized paper.

3. Set the paper width fence by carefully snapping it into the slots for the paper size.

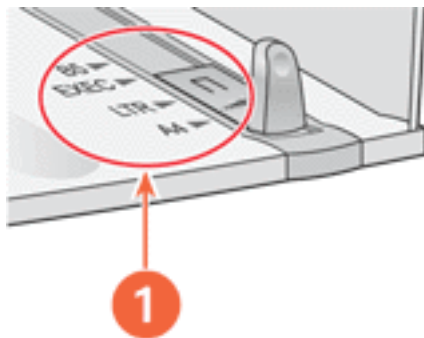


The slots for letter width paper are in the sides of the lower tray. Set the width to **LTR** to use legal-sized paper.



1. tilt the fence forward 2. insert the fence into the appropriate slots 3. tilt the fence back until it snaps into place

4. Set the paper length guide by pulling it until the arrow lines up with the paper size.



1. align the arrows



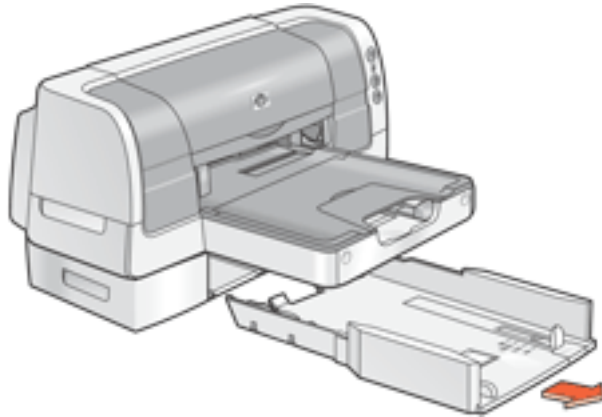
For legal-sized paper, pull the length guide out beyond the edge of the tray, load the paper, then slide the length guide against the edge of the paper.

load paper in the tray

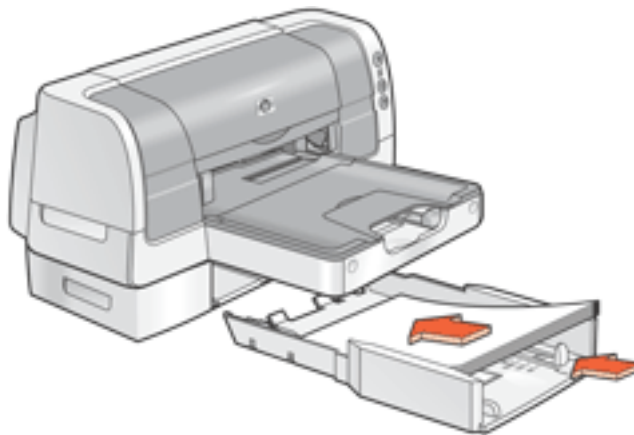
If you are using a paper size different than the paper size last used in the 250-Sheet Plain Paper Tray, then you must [set the paper size](#).

Follow these steps to load paper:

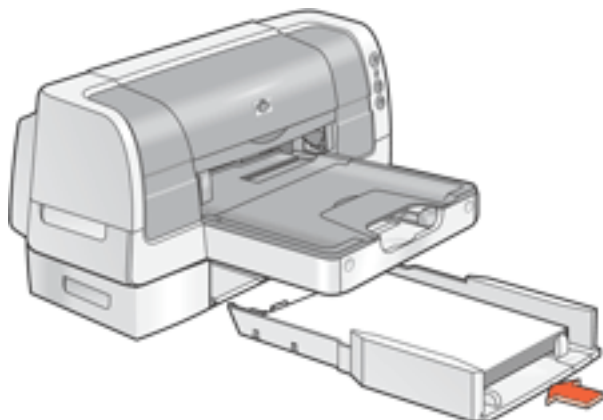
1. If necessary, remove the lower tray from the base.



2. Insert the paper into the lower tray.



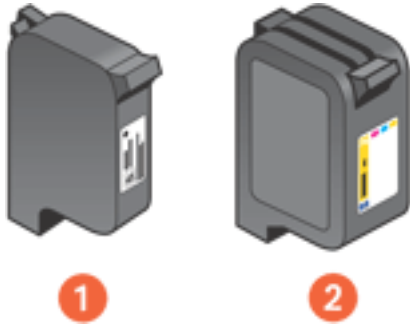
3. Insert the lower tray into the base until it snaps into place.



print cartridges

The following print cartridges can be used with the printer:

- black print cartridge
- tri-color print cartridge



1. black print cartridge 2. tri-color print cartridge

print cartridge selection

print cartridge	selection number	product number
black	45	hp 51645
tri-color	78	hp c6578

For installation instructions, see [replacing print cartridges](#).

For storage instructions, see [maintaining print cartridges](#).

For recycling instructions, see [print cartridge recovery](#).



For print cartridge ink capacity, see the information included in the print cartridge packaging.

automatic paper-type sensor

The Automatic Paper-Type Sensor provides better printing results, particularly when used with HP paper and media.

When the Automatic Paper-Type Sensor is engaged, the printer scans the first page of a document with a blue optical sensor light to determine the best paper type setting. Once determined, the page is printed.

For more information, see [using the automatic paper type sensor](#).

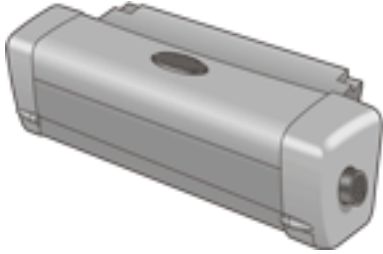


The Automatic Paper-Type Sensor is not available to be used for documents printed in **Draft** mode or from the [250-Sheet Plain Paper Tray](#).

Caution! Do not place the printer in direct sunlight. Direct sunlight can interfere with the Automatic Paper-Type Sensor.

two-sided printing accessory (duplexer)

The duplexer is a special hardware feature that enables the printer to automatically print on both sides of a page.



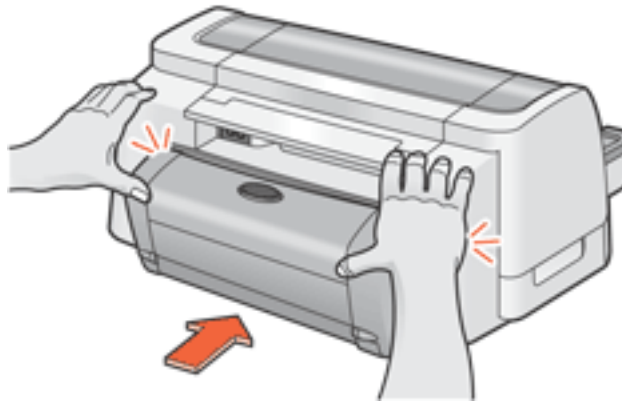
installing the duplexer

1. Push the two latch handles on the printer's Rear Access Door toward each other, then remove the door.



Caution! Do not discard the Rear Access Door. In order to print, the duplexer or the Rear Access Door must be attached to the printer.

2. Insert the duplexer in the back of the printer until both sides snap into place.



Do not press the buttons on either side of the duplexer when installing it in the printer. Use these buttons only when removing the duplexer from the printer.

printing with the duplexer

For instructions on printing two-sided documents with the duplexer, see [two-sided printing](#).

supported paper types

The duplexer only works with certain media types. For a list of supported media types, see [two-sided printing accessory specifications](#).

connectivity

The printer offers a number of options for connectivity, including:

- [USB](#)
- [parallel](#)
- [network](#)

USB

The printer connects to the computer with a USB cable. Your computer must be running a Microsoft Windows 98, Me, 2000, and/or XP operating system to use a USB cable.



For instructions on connecting the printer with a USB cable, see the *setup* poster that came with the printer.

parallel

The printer can connect to your computer with a parallel cable.



For instructions on connecting with a parallel cable, see the *setup* poster that came with the printer.

network

external wired network connection

- The printer can be connected directly to a computer on the network.

For instructions on connecting the printer directly to a computer on the network, use the printer software CD and follow the *onscreen network setup* instructions.

- The printer can be connected to a network with an HP JetDirect Print Server.

For instructions on connecting the printer to a network with an HP JetDirect Print Server, use the printer software CD and documentation that came with the HP JetDirect Print Server.

To view available wired networking documentation, click [here](#).

external wireless network connection

The printer can be connected to a network with an HP JetDirect Wireless Print Server.

For instructions on connecting the printer to a network with an HP JetDirect Print Server, use the printer software CD and documentation that came with the HP JetDirect Print Server.

To view available wireless networking documentation, click [here](#).

printing

Click the following topic below to view an explanation of the printer software:

- [print settings](#)
- [advanced features](#)
- [print status box](#)

Click the appropriate topic below to view instructions on printing functions:

- [printing a document](#)
- [changing default settings](#)
- [printing digital photographs](#)
- [two-sided printing](#)
- [using the automatic paper-type sensor](#)
- [selecting between paper trays](#)
- [printing on a different first page](#)
- [printing a screen image](#)
- [watermarks](#)

Click the appropriate topic below to view instructions for printing:

- [plain paper](#)
- [envelopes](#)
- [transparencies](#)
- [labels](#)
- [index cards and other small media](#)
- [photographs](#)
- [greeting cards](#)
- [posters](#)
- [banners](#)
- [iron-on transfers](#)

print settings

The printer is controlled by software installed on your computer. Use the printer software, known as the *printer driver*, to change the print settings for a document.

To change printer settings, open the Printer Properties dialog box.

opening the printer properties dialog box

Follow these steps to open the Printer Properties dialog box:

1. Open the file you want to print.
2. Follow one of these paths to select the Printer Properties dialog box, depending on the software program you are using:
 - Click **File** > **Print**, then select **Properties**.
 - Click **File** > **Print Setup**, then select **Properties**.
 - Click **File** > **Print** > **Setup**, then select **Properties**.

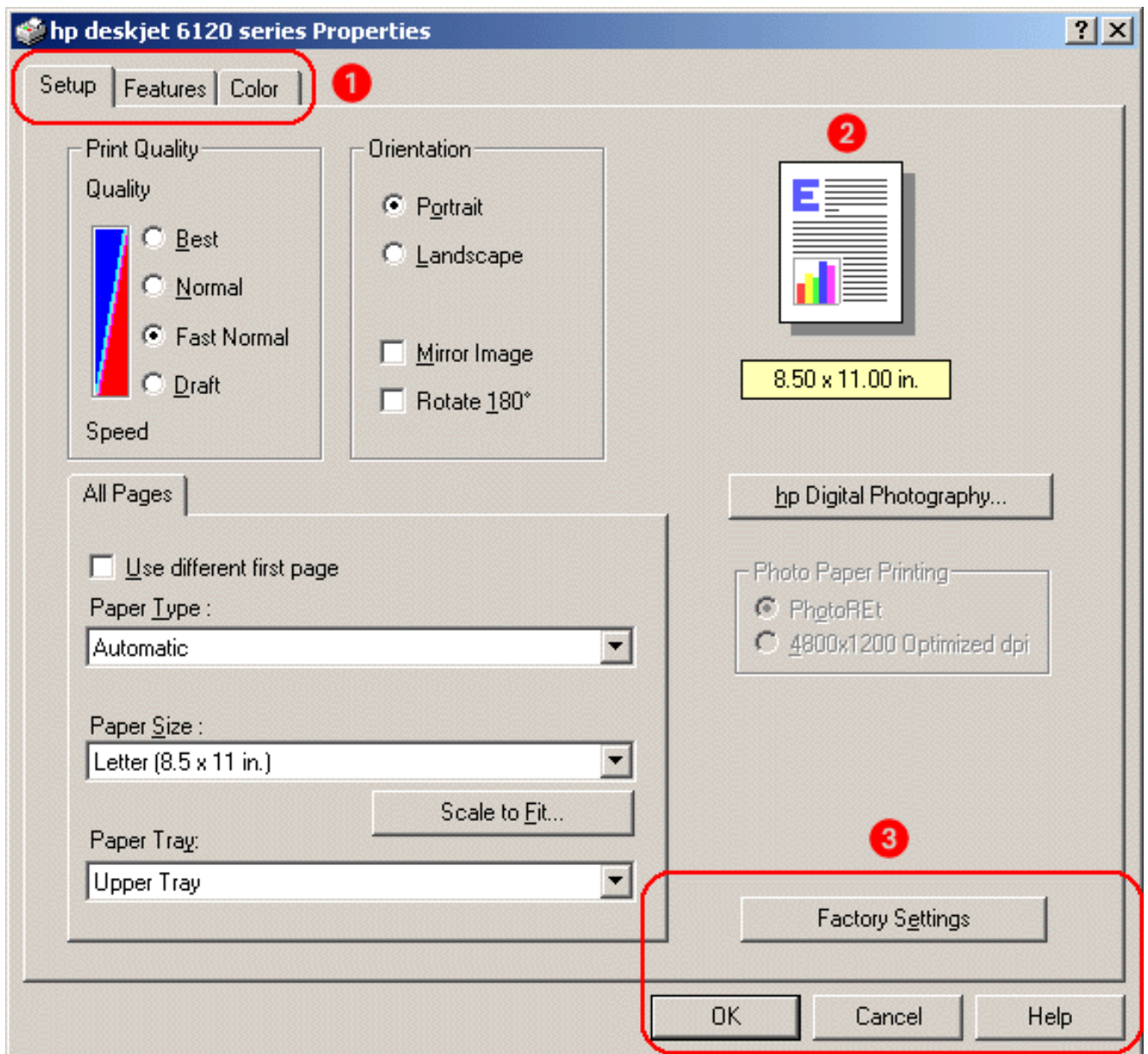
The Printer Properties dialog box appears.

using the printer properties dialog box

The Printer Properties dialog box has several tools to make it easy to use.

In addition to the tabs shown below, the Printer Properties dialog box may also have a Services tab. See [tools](#) for further information.

The Printer Properties dialog box has the following tabs and buttons:



1. **Tabs:** Click a tab to see its contents. To see a description of a specific tab, see [Setup](#), [Features](#), and [Color](#).



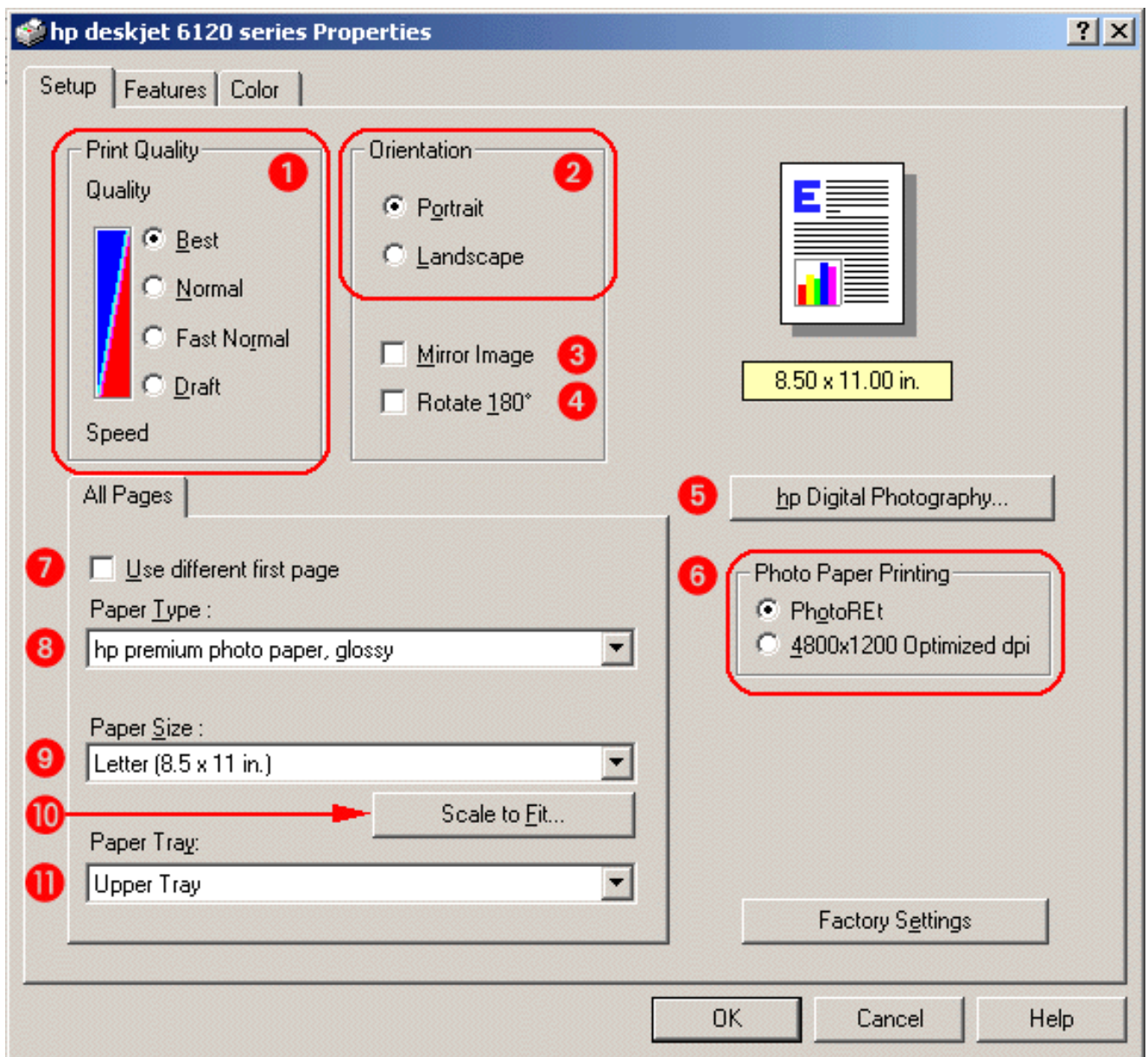
To find more information about options on each tab screen, point to an option and click the right mouse button to display the What's This? dialog box. Click What's This? to view more information about the selected option.

2. **Preview:** Shows how changes to the print settings affect the document.
3. **Buttons:**
 - o **OK:** Saves and applies settings
 - o **Cancel:** Closes the dialog box without saving the new settings
 - o **Help:** Opens online help
 - o **Factory Settings:** Restores default print settings

The Printer Properties dialog box may display an Apply button. The Apply button saves changes to settings without closing the dialog box.

setup tab

The Setup tab allows you to set these options:

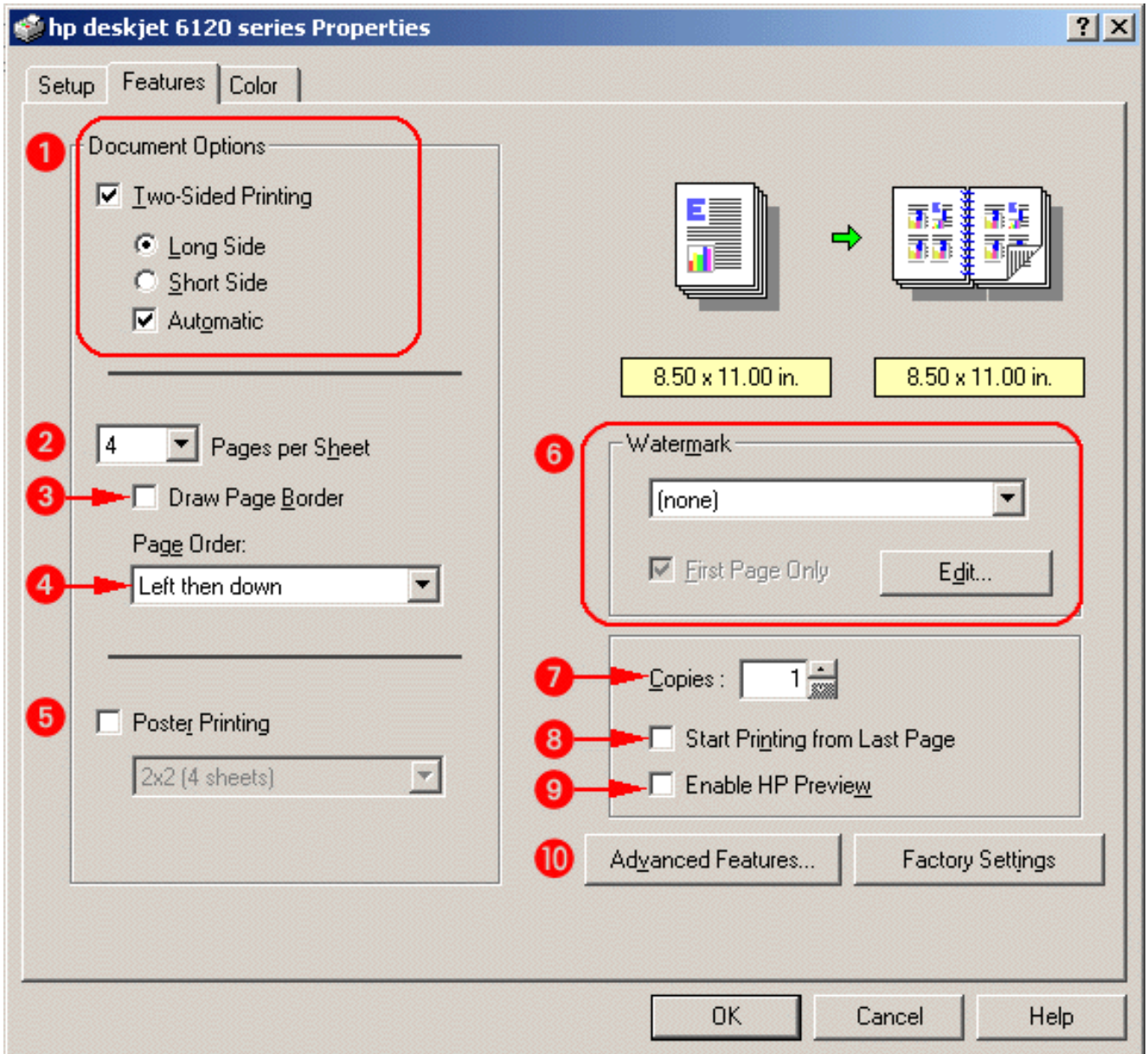


1. **Print Quality:** Quality of printout. There are four options to choose from: **Best**, **Normal**, **Fast Normal**, and **Draft**. Best provides the best print quality at the slowest printing speed. The print speed increases and the print quality lessens with Normal, Fast Normal, and Draft. Draft provides draft quality at the fastest printing speed.
2. **Orientation:** Page layout.
3. **Mirror Image:** Reverses the printed image left to right. This feature is useful when printing [iron-on transfers](#).
4. **Rotate 180°:** Rotates the printed image 180° top to bottom. This feature is not available for most paper types.
5. **hp Digital Photography:** See [printing digital photographs](#).

6. **Photo Paper Printing:** Quality of graphic printing on certain papers, such as HP photo papers.
7. **Use different first page:** Use this feature for printing cover pages or letterhead. See [printing on a different first page](#).
8. **Paper Type:** Type of paper used. **Automatic** enables the [automatic paper-type sensor](#), unless the print quality is set to **Draft** or the printer is printing from the [lower tray](#).
9. **Paper Size:** Size of paper used.
10. **Scale to Fit:** Size of text and images on a page.
11. **Paper Tray:** [Select between paper trays](#):
 - **Upper Tray:** Prints from the [upper tray](#).
 - **Lower Tray:** Prints from the [lower tray](#).
 - **Automatic: upper or lower tray:** Prints from the lower tray if the upper tray is empty.

features tab

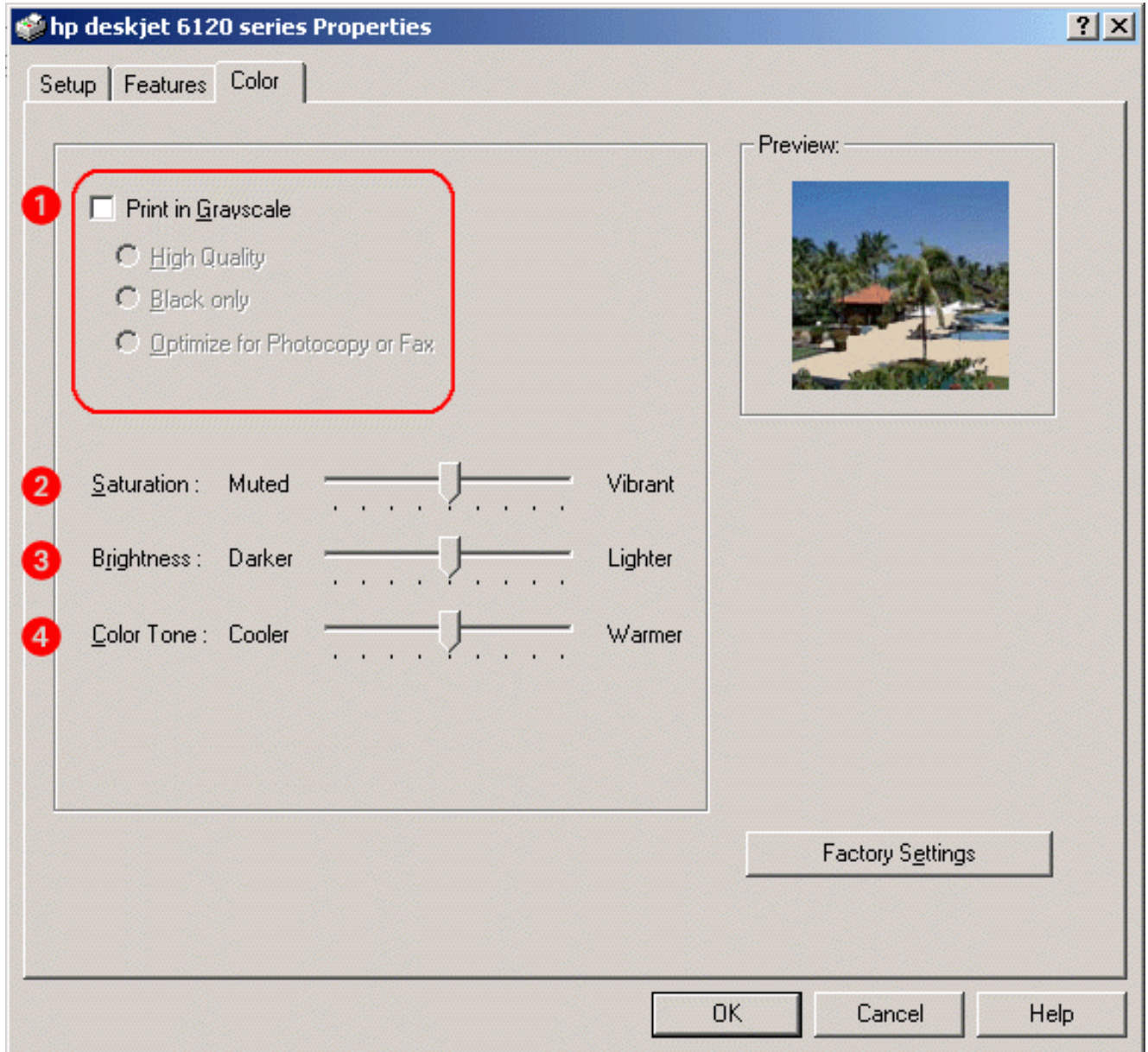
The Features tab allows you to set these options:



1. **Two-Sided Printing:** See [two-sided printing](#).
2. **Pages per Sheet:** Number of pages printed on each sheet of paper.
3. **Draw Page Border:** Place a border around each page.
4. **Page Order:** Order in which multiple pages appear on a single sheet of paper.
5. **Poster Printing:** Number of paper sheets used to print a poster.
6. **Watermark:** See [watermarks](#).
7. **Copies:** Number of copies printed.
8. **Start Printing from Last Page:** Multiple page document is in readable order when printing is complete.
9. **Enable HP Preview:** View the layout of a document before it prints.
10. **Advanced Features:** See [advanced features](#).

color tab

The Color tab allows you to set these options:



1. **Print in Grayscale:** Print in shades of gray.
2. **Saturation:** Intensity of printed colors.
3. **Brightness:** Lightness or darkness of printed colors.
4. **Color Tone:** Warmth or coolness of printed colors.

advanced features

Printing photographs, transparencies, or documents with graphics may require you to set several options in the Advanced Features dialog box.

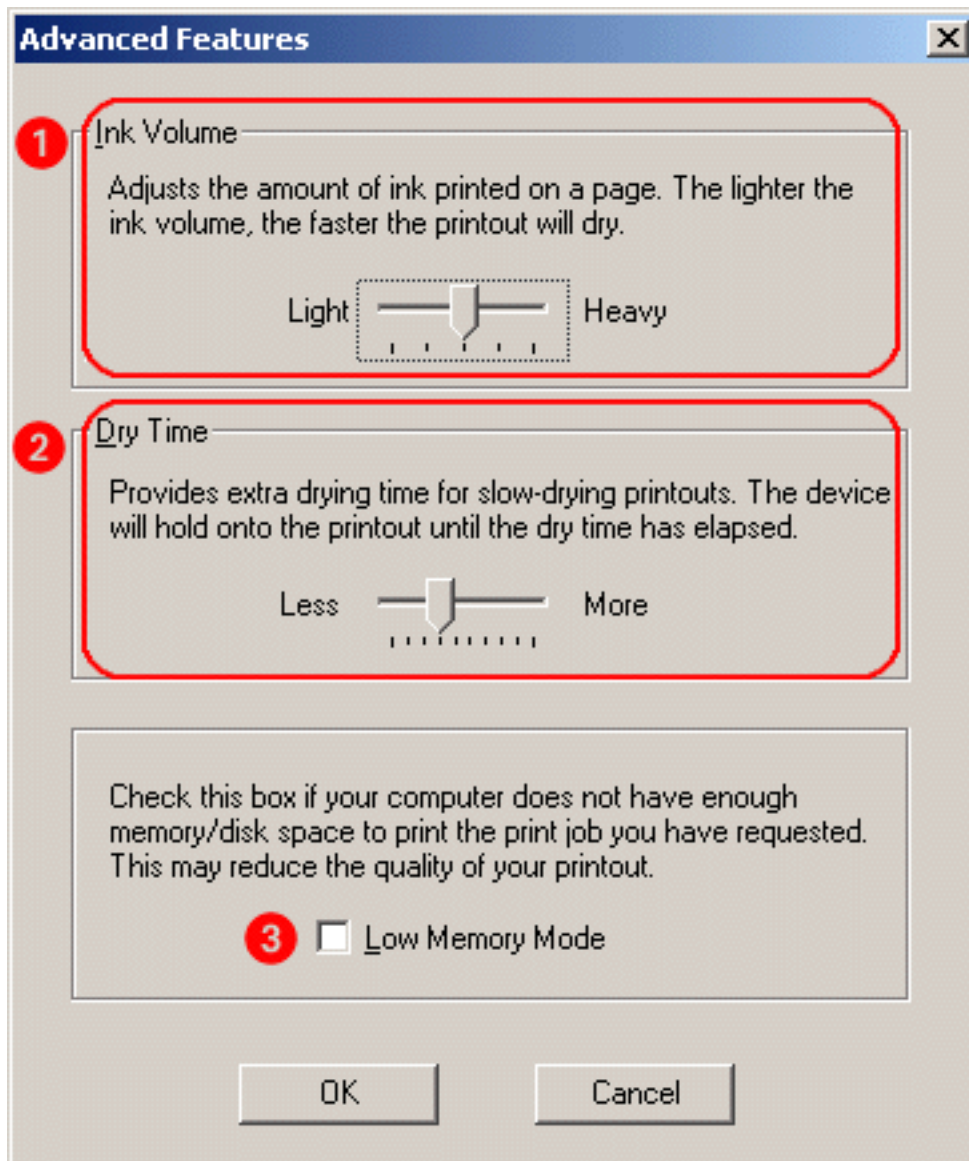
accessing the advanced features dialog box

Follow these steps to access the Advanced Features dialog box:

1. Open the **Printer Properties** dialog box.
2. Click the **Features** tab, then click the **Advanced Features** button.

using the advanced features dialog box

Use the Advanced Features dialog box to set these options:



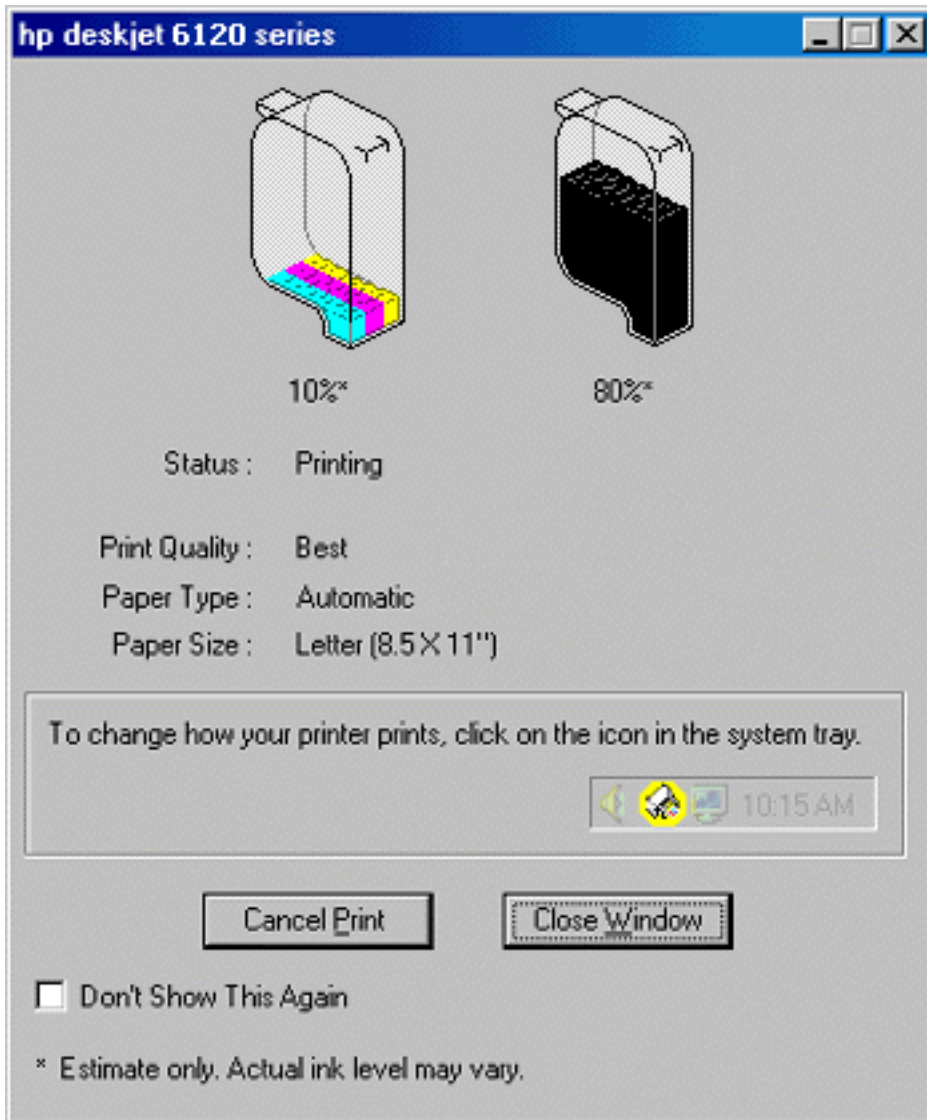
1. **Ink Volume:** Select this feature to lessen or increase the amount of ink used to print a document.
2. **Dry Time:** Select this feature to increase the time the printer holds a document after printing if the ink on your printed document smears.
3. **Low Memory Mode:** Select this option to allow the draft to be printed if your computer does not have enough memory or disk space to print a document.



Using Low Memory Mode may reduce the quality of your printout.

print status box

The Print Status box appears on the taskbar each time the printer prints a file. Click the taskbar button to maximize the Print Status box.



The following items are displayed:

- **Ink Level:** Estimated ink level of each print cartridge
- **Status:** Status of the print job
- **Print Quality:** **Draft**, **Fast Normal**, **Normal**, or **Best**
- **Paper Type:** Type of paper selected
- **Paper Size:** Size of paper selected

To change the print options, click the [taskbar icon](#).

To cancel a print job, click **Cancel Print**.

To close the Print Status box, click **Close Window**.

printing a document

Follow these instructions to print a document or change your print settings:

1. Open the file you want to print.
2. Follow one of these paths to open the Printer Properties dialog box:
 - Click **File** > **Print**, then select **Properties**.
 - Click **File** > **Print Setup**, then select **Properties**.
 - Click **File** > **Print** > **Setup**, then select **Properties**.

The Printer Properties dialog box appears.

3. Select the **Setup** tab to choose print quality, orientation, paper-type, and paper tray options, and access HP Digital Photography options.
4. Select the **Features** tab to choose two-sided printing, pages per sheet, number of copies printed, print order, poster printing, watermark printing, and to open the Advanced Features dialog box.
5. Select the **Color** tab to make color and contrast adjustments.
6. Click **OK** to return to the Print or Print Setup screen.



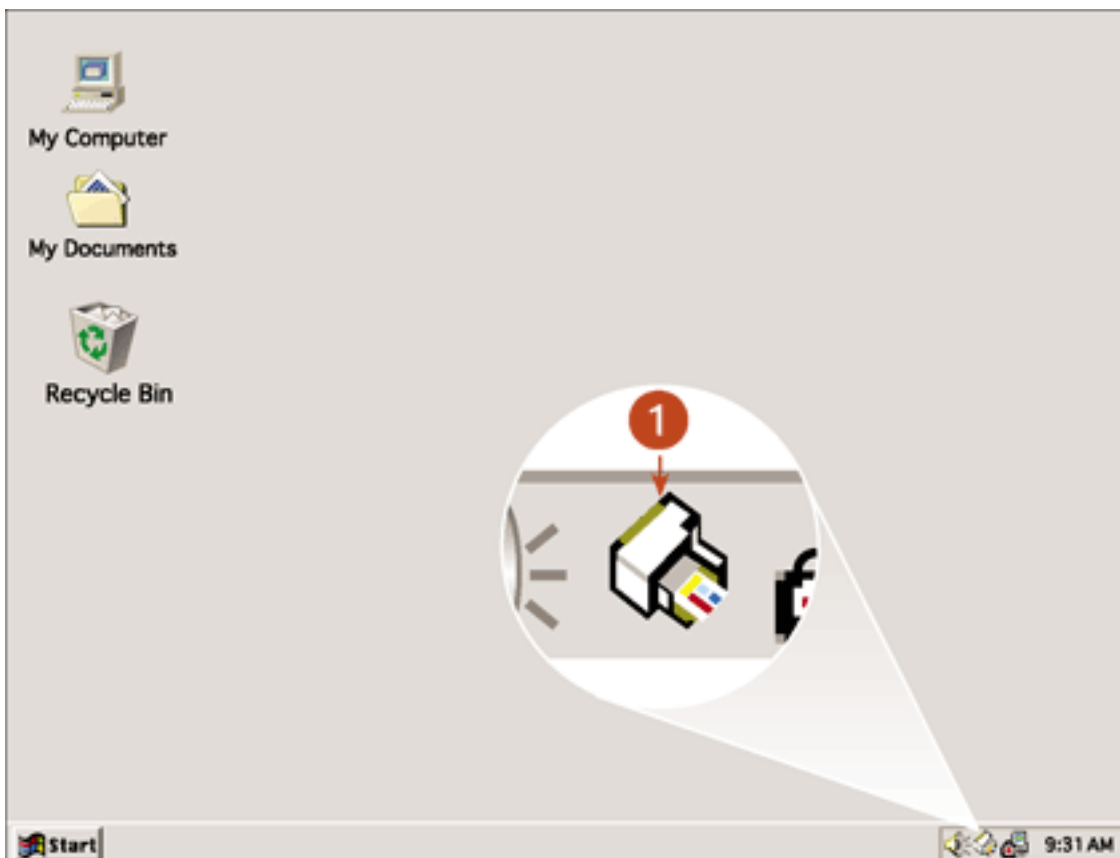
The Printer Properties dialog box may also display the Apply button. The Apply button saves changes to settings without closing the dialog box.

7. Click **OK** to print.

changing default settings

taskbar icon

The taskbar icon lets you change the default print settings. Default print settings apply to all documents you print with the printer.



1. taskbar icon

changing printer settings

1. Right-click the **taskbar icon**.



When you right-click the taskbar icon, a list of hp printers installed on the computer appears. If necessary, select the printer for which you want to change the default settings. Then right-click the **taskbar icon** again.

2. Select **Change Default Print Settings**.

The Printer Properties dialog box appears.

3. Select the print properties you wish to use for the default print settings.

4. Click **OK**.

A dialog box appears stating that the new settings will be used every time you print. If you do not want to see this dialog box again, select **Don't show me this message again**.

5. Click **OK** to save the new default print settings.

These settings will remain in effect unless you change the default print settings again.

turning off the taskbar icon

1. Right-click the **taskbar icon**.

The taskbar shortcut menu screen appears.

2. Select **Exit** to turn off the taskbar icon.

turning on the taskbar icon

Click **Start > Programs > Hewlett-Packard > [hp deskjet series] > taskbar icon**. The taskbar appears automatically whenever you restart your computer.



For a description of available print options, see [print settings](#).

printing digital photographs

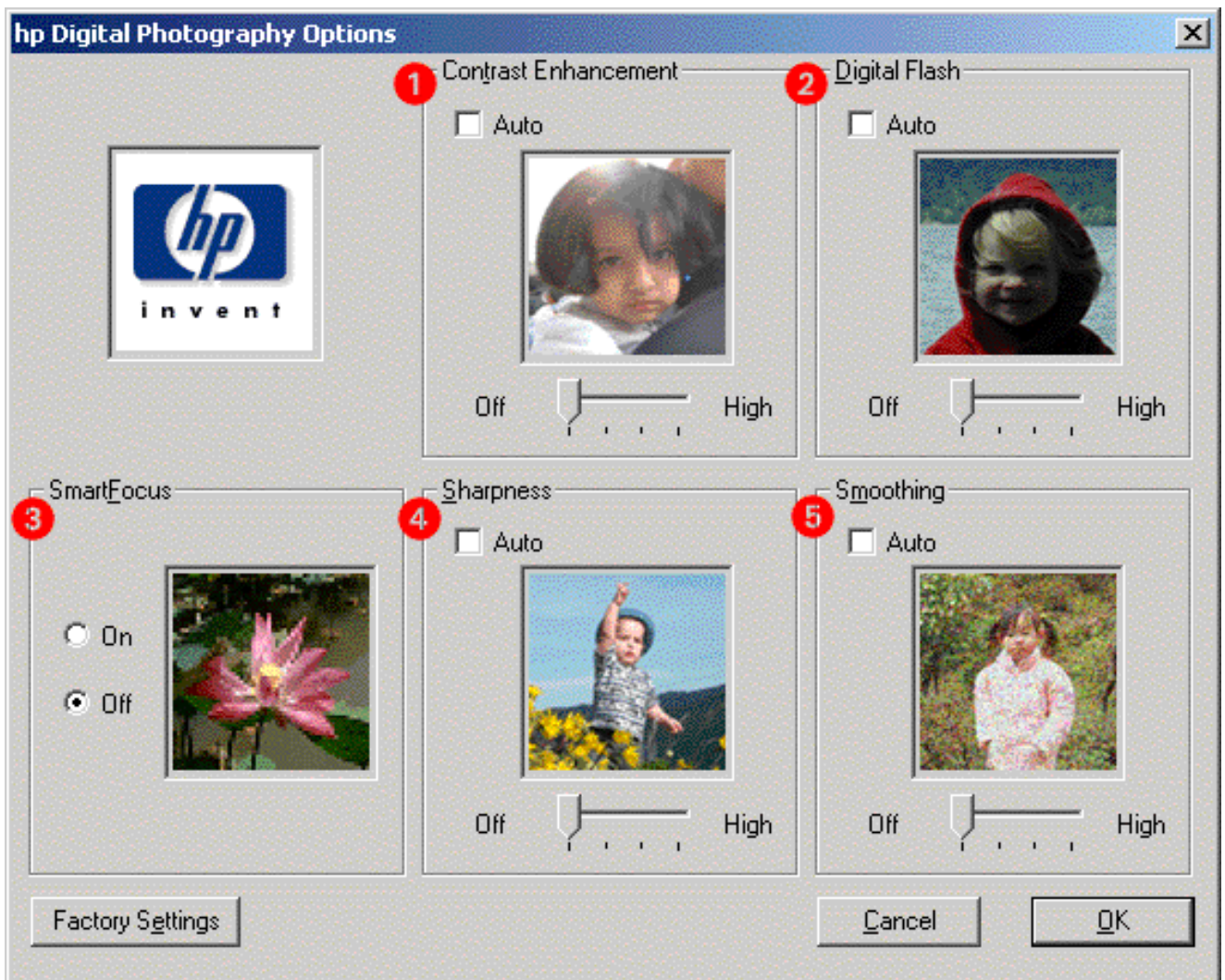
The printer has several features to improve the print quality of your digital photographs. These features are found in the hp Digital Photography Options dialog box.

To access these options:

1. Open the [Printer Properties](#) dialog box.
2. Click the **Setup** tab, then click the **hp Digital Photography** button.

using the hp digital photography options dialog box

Use the hp Digital Photography Options dialog box to set these options:



1. **Contrast Enhancement:** Adjust contrast to preference. Click **Auto** to allow the printer driver to automatically balance contrast.
2. **Digital Flash:** Lighten dark images. Click **Auto** to allow the printer driver to automatically balance lightness and darkness.

3. **SmartFocus:** Click **On** to allow the printer driver to automatically focus images.
4. **Sharpness:** Adjust image sharpness to preference. Click **Auto** to allow the printer driver to automatically balance sharpness.
5. **Smoothing:** Adjust distortion to preference. Click **Auto** to allow the printer driver to automatically balance smoothing.

two-sided printing

Use one of the following methods to print two-sided documents:

- [automatic two-sided printing](#)
- [manual two-sided printing](#)

automatic two-sided printing

To print two-sided documents automatically, the [duplexer](#) must be attached to the printer.

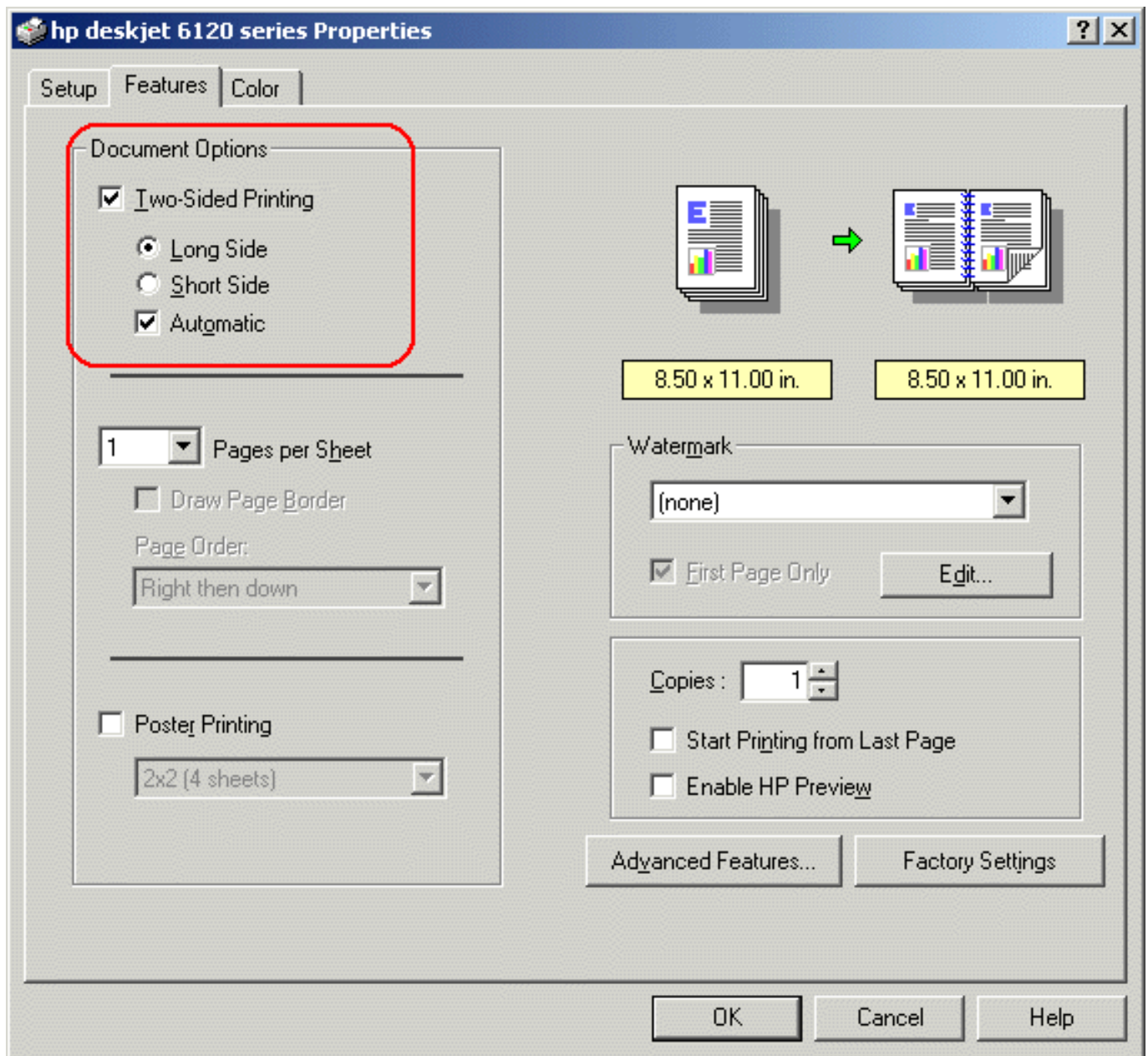
The duplexer only works with certain media types. For a list of supported media types, see [two-sided printing accessory specifications](#).

If you want to print a two-sided document on a media type not supported by the duplexer, see [manual two-sided printing](#).

printing instructions

Follow these instructions to print a two-sided document:

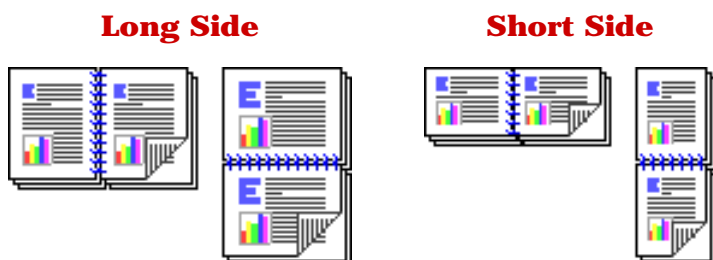
1. Open the [Printer Properties](#) dialog box, then select the **Features** tab.



2. Check **Two-Sided Printing**.

The Two-Sided Printing Margin dialog box appears.

3. Select the appropriate page content option, then click **OK** to return to the Features tab.
4. Select one of the binding options:



5. Select the **Automatic** box.
6. Change any other desired print settings, then click **OK**.

When the first side prints, the printer pauses while the first side of the printed page dries. Once dry, the second side of the page is printed and released.

For a description of the duplexer, see [two-sided printing accessory \(duplexer\)](#).

manual two-sided printing

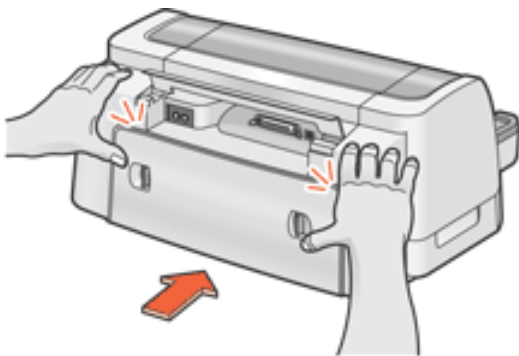
Use the manual two-sided printing feature if:

- The [duplexer](#) is not attached to the printer
- You want to print a two-sided document on a media type the duplexer does not support

rear access door

If the duplexer is not attached to the printer, the printer cannot feed paper unless the Rear Access Door is attached.

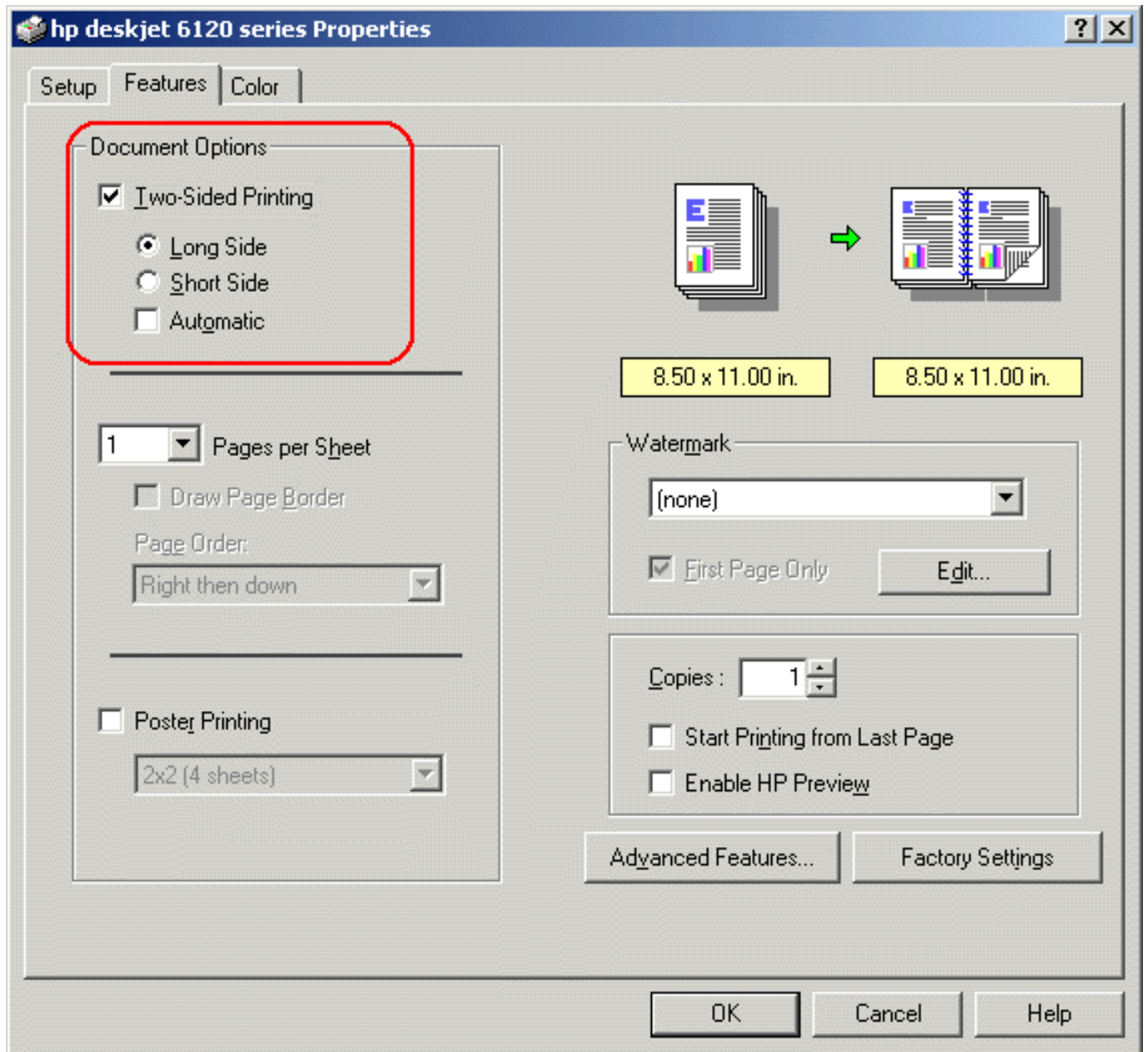
Push the Rear Access Door into place.



printing instructions

Follow these instructions to print a two-sided document manually:

1. Open the [Printer Properties](#) dialog box, then select the **Features** tab.



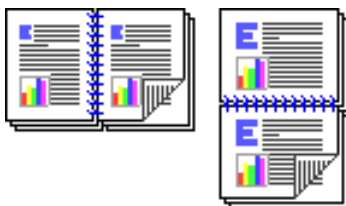
2. Check **Two-Sided Printing**.

If the Two-Sided Printing Margin dialog box appears, click **Cancel**.

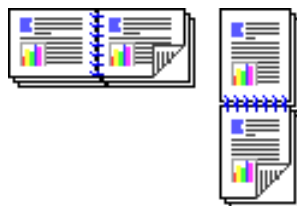
3. Deselect the **Automatic** box.

4. Select one of the binding options:

Long Side



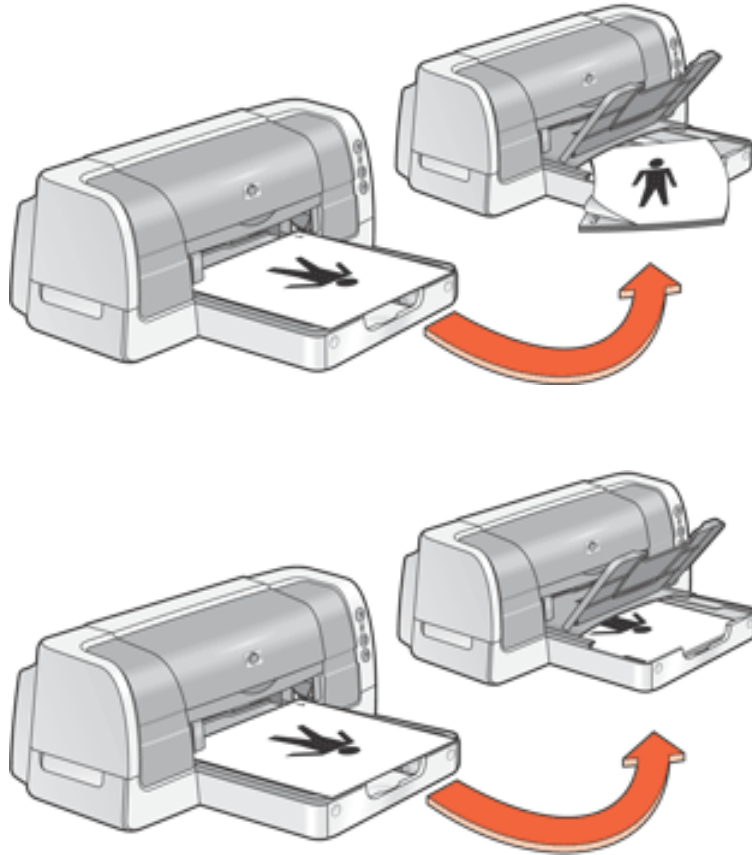
Short Side



5. Change any other desired print settings, then click **OK**.

The printer automatically prints odd-numbered pages first. Once the odd-numbered pages are printed, a message appears prompting you to reload the paper so that the even-numbered pages can be printed.

6. Reload the paper, then click **Continue**.



using the automatic paper-type sensor

availability

The Automatic Paper-Type Sensor is available to be used for documents printed from the [upper tray](#) in any print quality mode other than **Draft**.

The Automatic Paper-Type Sensor is not operational for documents printed in **Draft** mode or from the [250-Sheet Plain Paper Tray](#).

turning on the automatic paper-type sensor

Open the [Printer Properties](#) dialog box and select the following options:

tab	setting
Setup	Paper Type: Automatic Print Quality: Best, Normal, or Fast Normal Paper Tray: Upper or Automatic



If **Automatic** is selected as the paper tray, verify that the upper paper tray contains paper. If the upper tray is empty, the Automatic Paper-Type Sensor is not operational for that print job.

turning off the automatic paper-type sensor

Open the [Printer Properties](#) dialog box and select one of the following options:

tab	setting
Setup	Paper Type: Any paper type <i>other than</i> Automatic —or— Print Quality: Draft —or— Paper Tray: Lower (if using the 250-Sheet Plain Paper Tray)

For a description of the Automatic Paper-Type Sensor, see [automatic paper-type sensor](#).

selecting between paper trays

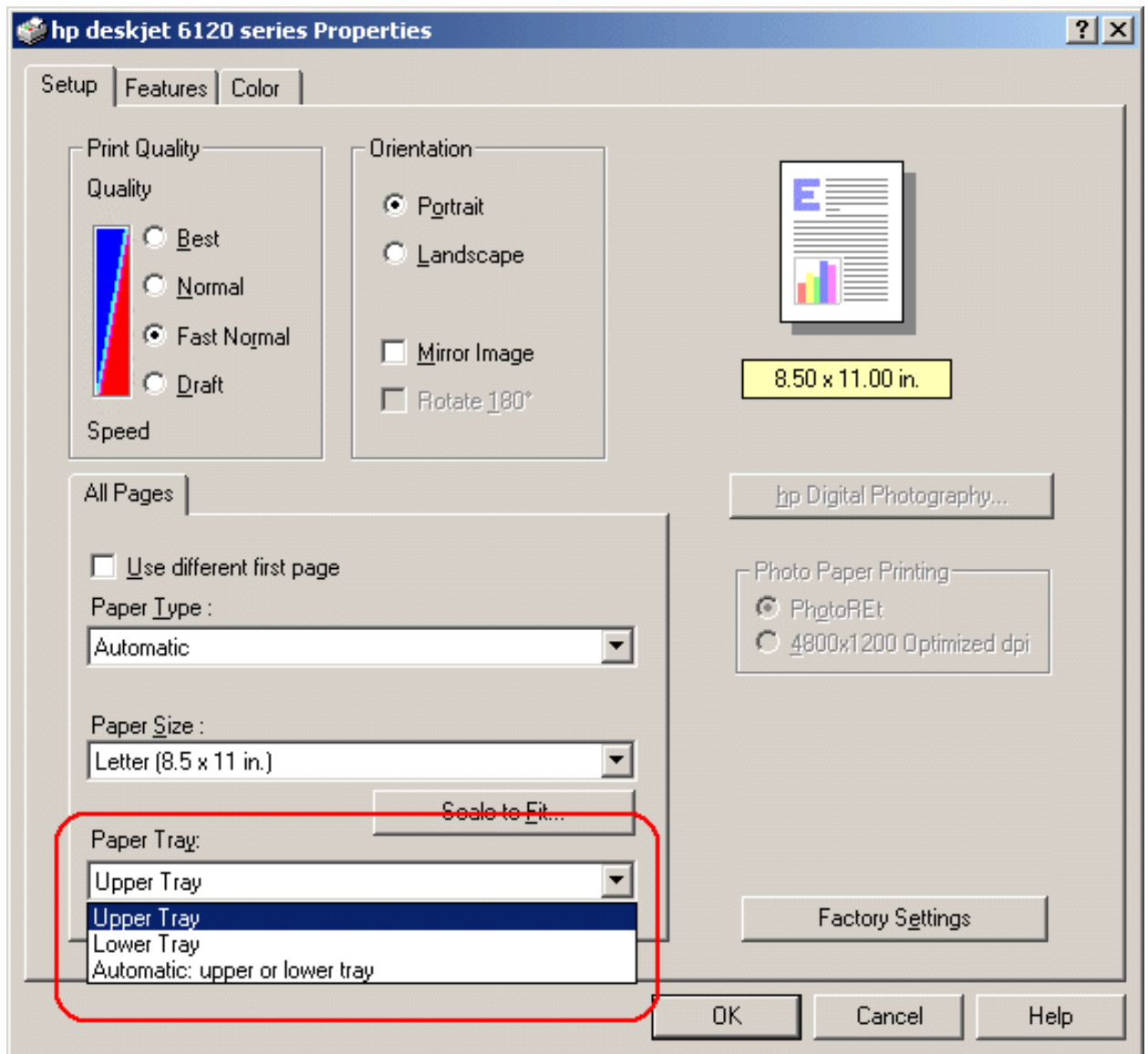
The 250-Sheet Plain Paper Tray may be included with your printer. The 250-Sheet Plain Paper Tray can be purchased separately from an authorized HP dealer.

For a description of the 250-Sheet Plain Paper Tray, see [250-sheet plain paper tray](#).

printing instructions

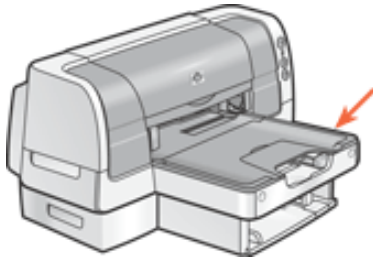
Follow these steps to select between the paper trays.

1. Open the [Printer Properties](#) dialog box.

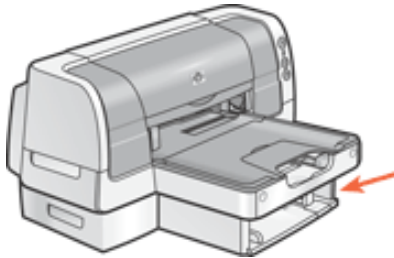


2. Select one of the following options in the **Paper Tray** box:

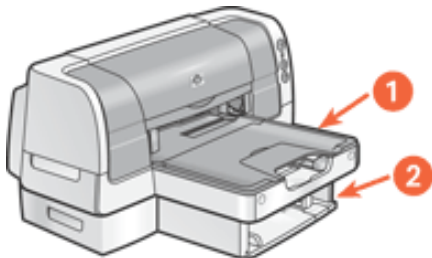
- **Upper Tray:** Prints from the [In tray](#). If the In tray is empty, an **Out of Paper** message appears.



- **Lower Tray:** Prints from the [250-Sheet Plain Paper Tray](#). If the lower tray is empty, an **Out of Paper** message appears.



- **Automatic: upper or lower tray:** Prints from the [In tray](#). If the In tray is empty, the printer prints from the [250-Sheet Plain Paper Tray](#). If the lower tray is empty, an **Out of Paper** message appears.



3. Change any other desired print settings, then click **OK**.

printing on a different first page

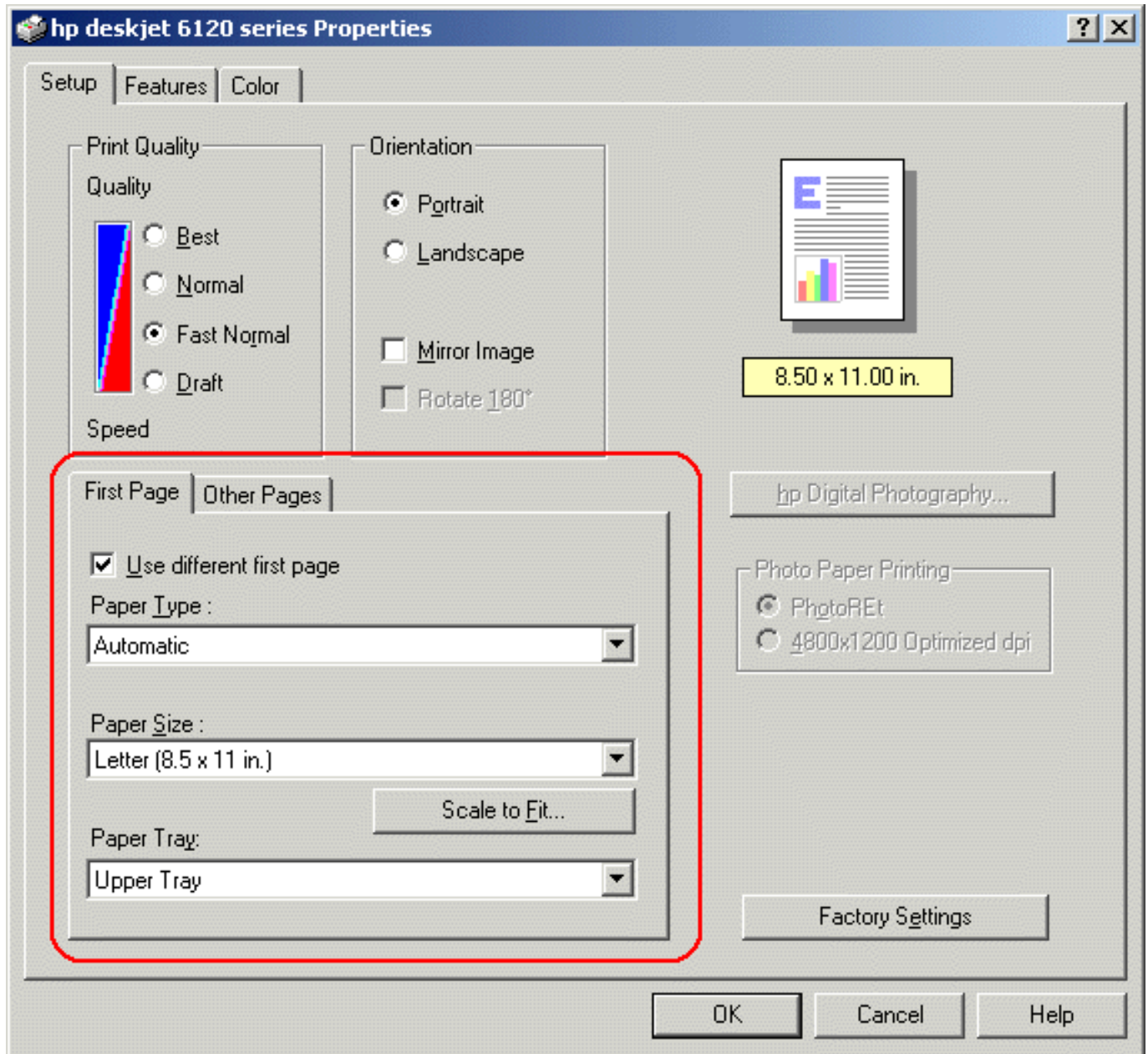
The *Use different first page* feature prints the first page of a multi-page document on a different paper-type than is used for the rest of the document.

Follow these steps to print with the *Use different first page* feature:

1. Follow the appropriate instructions for loading paper:
 - **if the 250-Sheet Plain Paper tray is being used...**
Load the paper for the first page in the [In tray](#), then load plain paper in the [lower tray](#).
 - **if the 250-Sheet Plain Paper tray is not being used...**
Load the paper for the bulk of the document in the [In tray](#), then load the paper for the first page on top of the paper stack in the In tray.

For instructions on loading a specific paper-type, click [here](#), then select the appropriate paper-type.

2. Open the [Printer Properties](#) dialog box.



3. Click the **Use different first page** checkbox.
4. Select the paper-type and paper size for the first page.
5. Select **Upper** in the Paper Tray box.
6. Click the **Other Pages** tab.
7. Select **Upper** or **Lower** in the Paper Tray box.
8. Select any other desired [print settings](#), then click **OK**.



Do not print the document in reverse order (last page first).

printing a screen image

The HP Print Screen Utility* allows you to print a screen image displayed on the computer monitor. It works when your HP deskjet printer is selected as the default printer.

**This option may not be active or available depending on printer installation.*

printing guidelines

Use either letter-sized or A4-sized paper to print the image.

print screen button

- Press the **Print Screen** button on the keyboard to print a screen.
—or—
- Press the **Alt** and the **Print Screen** button on the keyboard at the same time to print an active application window.

configuring the hp print screen utility

Access the HP Print Screen Utility configuration window from **Start > Programs > Hewlett-Packard > [hp deskjet printer] > hp print screen**.

Use the configuration window to set up various options for the HP Print Screen Utility:

- **Unload/Load HP Print Screen** activates or deactivates the utility.
- **Start with Windows** determines whether the HP Print Screen Utility launches automatically when Windows is started.
- **Capture screen** performs the same action as if the **Print Screen** button on the keyboard were pressed.
- **Orientation** toggles between landscape and portrait mode.

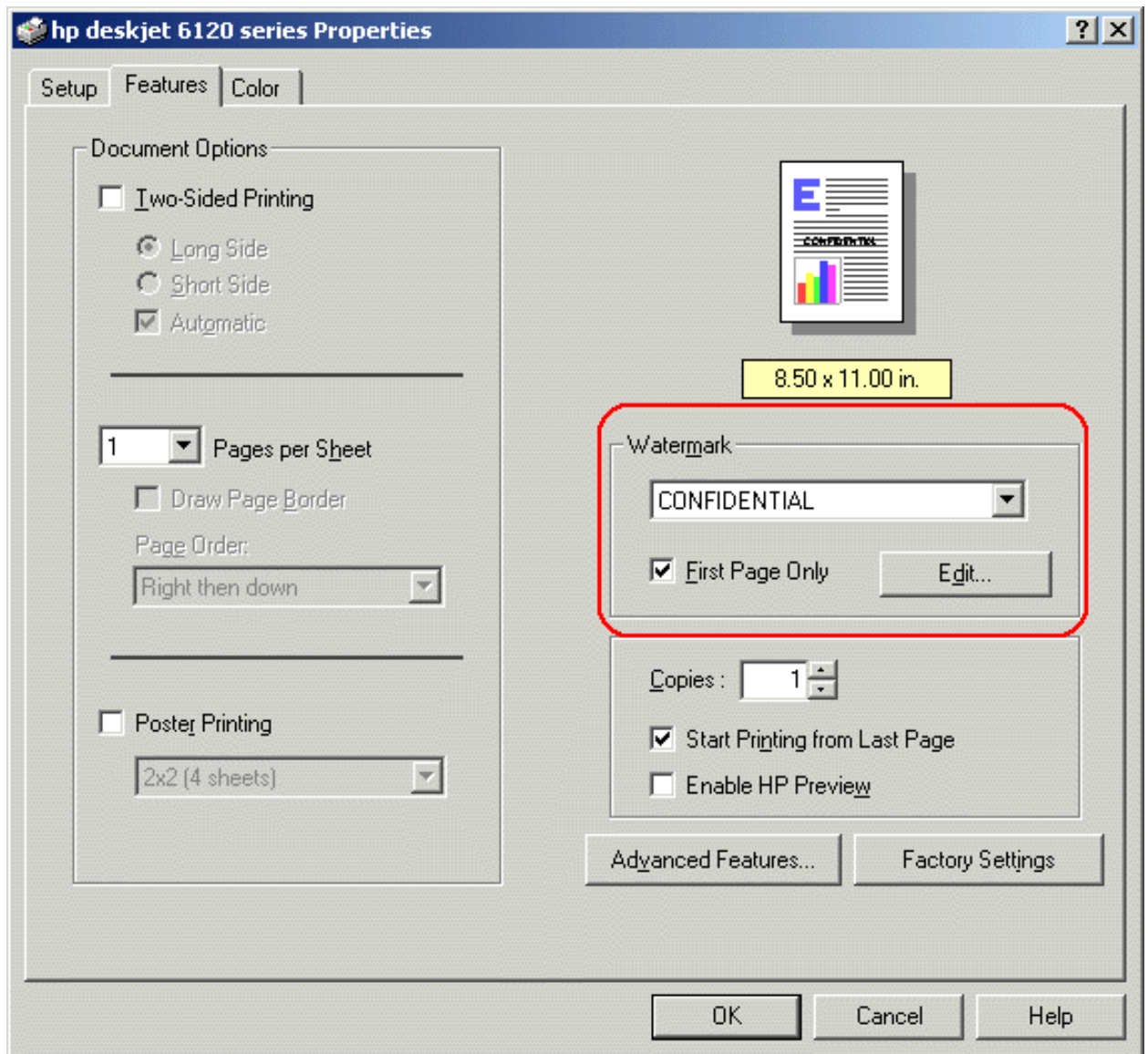
watermarks

Watermarks appear as background printing on documents.

applying an existing watermark to a document

Follow these steps to apply an existing watermark to a document:

1. Open the [Printer Properties](#) dialog box.
2. Click the **Features** tab.



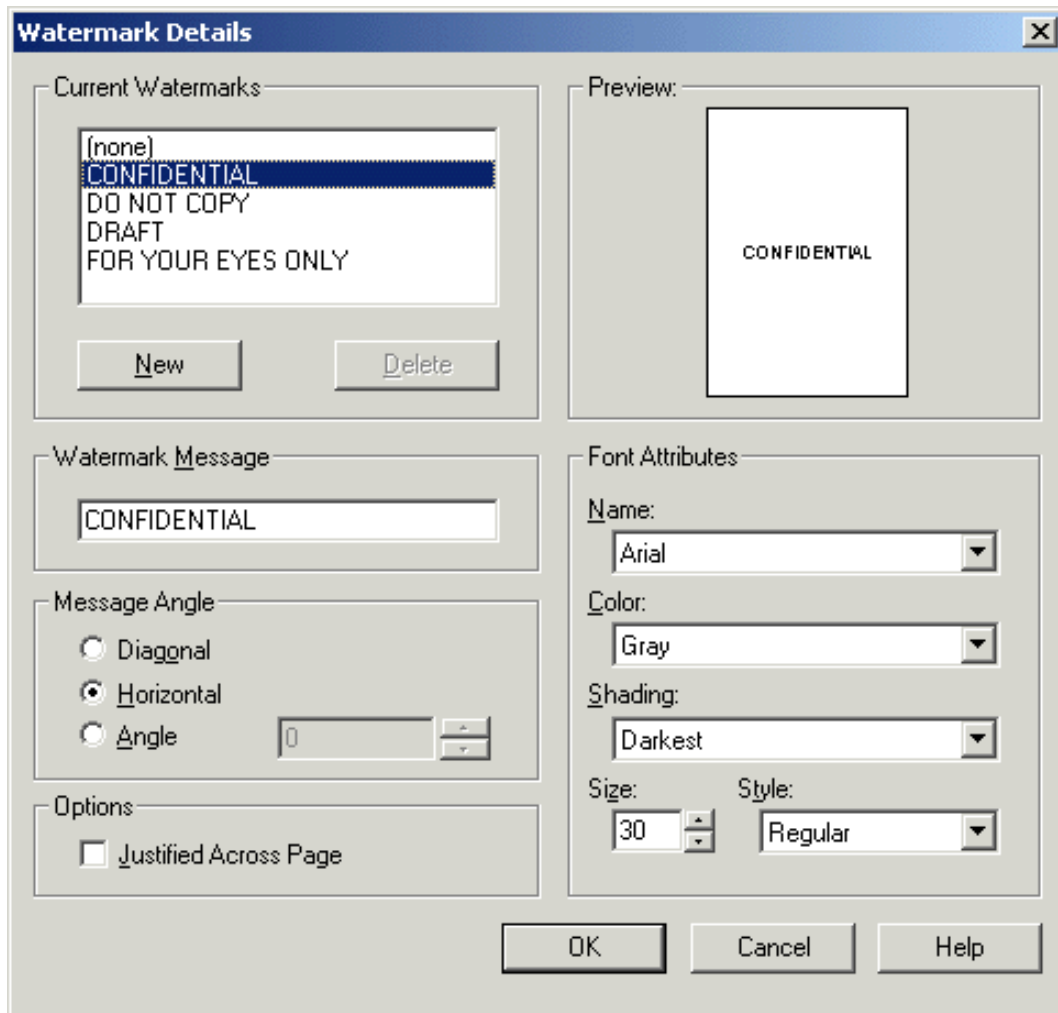
3. Select the watermark you want from the list.
4. Do one of the following:
 - o If you want the watermark to appear on the first page only, select **First Page Only**.
 - o If you want the watermark to appear on all printed pages, leave **First Page Only** unchecked.
5. Print the document according to the instructions for the [paper type](#).

creating or changing a watermark

Follow these steps to create or change a watermark:

1. Open the [Printer Properties](#) dialog box.
2. Click the **Features** tab.
3. Click the **Edit** button.

The Watermark Details dialog box appears.



4. Do one of the following:
 - o Select an existing watermark to change
 - or—
 - o Click the **New** button
5. Create or change the watermark message, message angle, and font attributes you want.
6. After you have set the watermark details, click **OK**.
7. [Apply](#) the watermark.

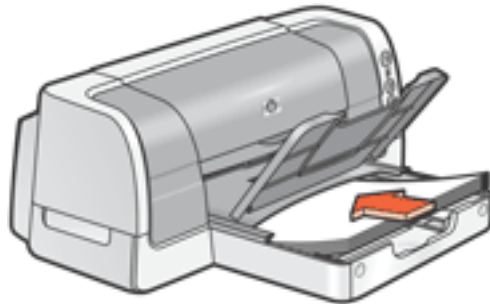


To find more information about options on each tab screen, point to an option and click the right mouse button to display the What's This? dialog box. Click **What's This?** to view more information about the selected option.

plain paper

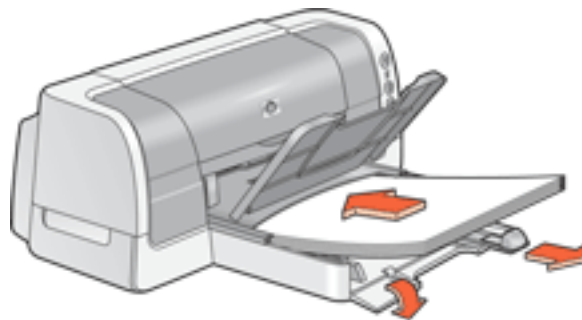
preparing to print

1. Raise the Out tray.
2. Slide out both paper guides.
3. Do one of the following:
 - For **letter**, **executive**, and **B5** sized paper, place up to 150 sheets of paper in the In tray.



—or—

- For **legal-sized** and **A4** paper, flip down the In tray door, pull out the paper length guide, then place up to 150 sheets of paper in the In tray.



4. Slide the paper guides *firmly* against the paper.
5. Lower the Out tray.



Plain paper can also be printed from the [250-Sheet Plain Paper Tray](#).

printing on plain paper

1. Open the [Printer Properties](#) dialog box, then select the following setting:

tab	setting
Setup	Paper Type: Automatic or Plain Paper Paper Tray: Upper, Lower, or Automatic

2. Select any other desired print settings.
3. After you have selected the print settings, click **OK**.



For a description of available print options, see [print settings](#).

envelopes

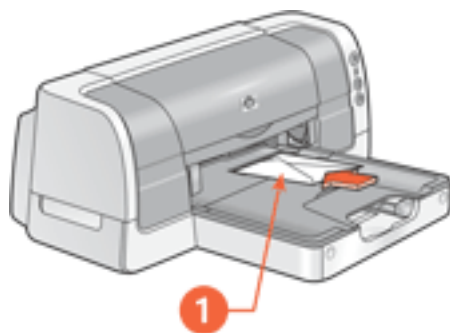
Print a single envelope using the envelope slot, or print multiple envelopes using the [In tray](#).

printing guidelines

- Never place more than 22 envelopes in the In tray at one time.
- Avoid using envelopes that have clasps or windows.
- Avoid using envelopes that are shiny or embossed; envelopes with thick, irregular, or curled edges; or envelopes that are wrinkled, torn, or otherwise damaged.
- Align the envelope edges before inserting them in the In tray.

preparing to print a single envelope

1. Place the envelope with the flap side on the left and facing up into the single envelope slot.
2. Push the envelope forward until it stops.

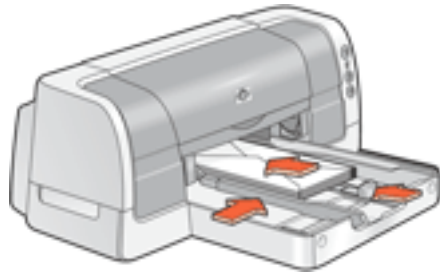


1. flap

preparing to print multiple envelopes

1. Remove the Out tray.
2. Slide out both paper guides, then remove all paper from the In tray.
3. Place no more than 22 envelopes with the flap side on the left and facing up in the In tray.

4. Push the envelopes forward until they stop.
5. Slide the paper guides *firmly* against the edges of the envelopes.



6. Replace the Out tray.

printing the envelopes



If your software program includes an envelope-printing feature, follow the instructions provided with the software program. Otherwise, follow the instructions below.

1. Open the [Printer Properties](#) dialog box, then select the following settings:

tab	setting
Setup	Paper Type: Automatic or Plain Paper Paper Size: Appropriate envelope size Orientation: Appropriate envelope orientation Paper Tray: Upper

2. Select any other desired print settings, then click **OK**.



For a description of available print options, see [print settings](#).

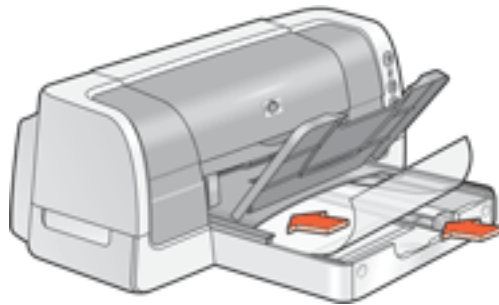
transparencies

printing guidelines

For great results use **hp premium inkjet transparency film**.

preparing to print

1. Raise the Out tray.
2. Slide out both paper guides, then remove all paper from the In tray.
3. Fan the edges of the transparency sheets to separate them, then align the edges.
4. Place no more than 30 transparency sheets in the In tray with the rough side down and the adhesive strip toward the printer.



5. Carefully push the transparencies forward until they stop so that none of the adhesive strips catch on one another.
6. Slide the paper guides *firmly* against the transparency sheets.
7. Lower the Out tray.

printing transparencies

1. Open the [Printer Properties](#) dialog box, then select the following setting:

tab	setting
Setup	Paper Type: Automatic or appropriate transparency film Paper Tray: Upper

2. Select any other desired print settings, then click **OK**.



For a description of available print options, see [print settings](#).

The printer may wait for transparencies to dry before releasing them to the Out tray.

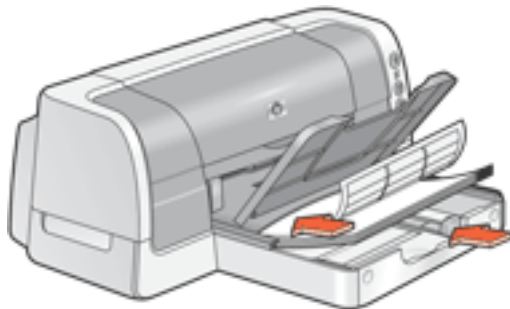
labels

printing guidelines

- Use only paper labels that are designed specifically for inkjet printers.
- Use only full sheets of labels.
- Use only US Letter-sized or A4-sized sheets of labels.
- Verify that the labels are not sticky, wrinkled, or pulling away from the protective backing.
- Do not use plastic or clear labels. The ink will not dry on these labels.
- Never place more than 30 sheets of labels in the In tray at one time.

preparing to print

1. Raise the Out tray.
2. Slide out both paper guides, then remove all paper from the In tray.
3. Fan the edges of the label sheets to separate them, then align the label edges.
4. Load no more than 30 label sheets — label side down — in the In tray.
5. Slide the paper guides *firmly* against the sheets.



6. Lower the Out tray.

printing labels



If your software program includes a label printing feature, follow the instructions provided with the software program. Otherwise, follow the instructions below.

1. Open the [Printer Properties](#) dialog box, then select the following settings:

tab	setting
Setup	Paper Type: Automatic or the appropriate paper type Paper Size: A4 (210 x 297 mm) or Letter (8.5 x 11 in) Orientation: Appropriate orientation Paper Tray: Upper
Features	Two-Sided Printing: Unchecked

2. Select any other desired print settings, then click **OK**.



For a description of available print options, see [print settings](#).

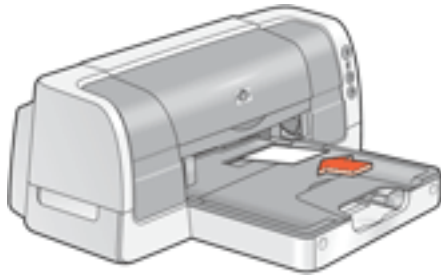
index cards and other small media

printing guidelines

Use only cards and small media that meet the printer's paper size specifications. For the printer's paper size specifications, see [size specifications](#).

preparing to print a single index card

1. Place the card into the single envelope slot.
2. Push the card forward until it stops.

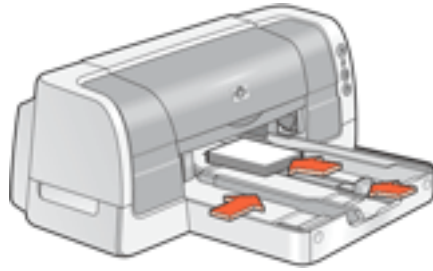


If printing on a card smaller than 4 in. x 6 in., load the card in the In tray rather than the single envelope slot.

preparing to print multiple index cards and other small media

1. Remove the Out tray.
2. Slide out both paper guides, then remove all paper from the In tray.
3. Align the card edges.
4. Place no more than 60 cards in the In tray.
5. Push the cards forward until they stop.
6. Slide the paper width guide *firmly* against the edges of the cards.

- Slide the paper length guide all the way in, then slide the fine length guide *firmly* against the cards.



- Replace the Out tray.

printing index cards and other small media



If your software program includes a card printing feature, follow the instructions provided by the software program. Otherwise, follow the instructions below.

- Open the [Printer Properties](#) dialog box, then select the following setting:

tab	setting
Setup	Paper Type: Automatic or Plain Paper Paper Size: Appropriate card size Orientation: Appropriate orientation Paper Tray: Upper
Features	Two-Sided Printing: Deselected for cards smaller than 4 in. x 6 in.

- Select any other desired print settings, then click **OK**.



For a description of available print options, see [print settings](#).

If an **out of paper** message appears, verify the cards are positioned properly in the paper tray.

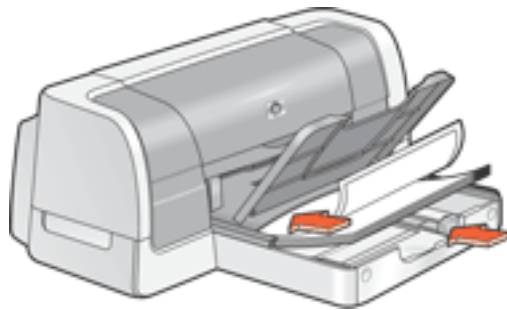
photographs

printing guidelines

- The photo must be in an electronic format (digital) before it can be printed. Take a digital picture, scan a photo, or have your local camera shop provide an electronic file of the photo.
- For best print quality use a High Resolution print setting and set the [HP Digital Photography options](#).
- Use hp photo papers for great results.

preparing to print

1. Raise the Out tray.
2. Slide out both paper guides, then remove all paper from the In tray.
3. Fan the edges of the photo paper to separate them, then align the photo paper edges.
4. Place no more than 50 sheets of photo paper—printable side down—in the In tray.
5. Slide the paper guides *firmly* against the edges of the photo paper.



6. Lower the Out tray.

printing photographs

1. Open the [Printer Properties](#) dialog box, then select the following setting:

tab	setting
Setup	Print Quality: Best Paper Type: Automatic or the appropriate photo paper type Photo Paper Printing: <ul style="list-style-type: none">○ PhotoREt for best print speed and quality, or○ 4800 x 1200 optimized color dpi on premium inkjet photo papers, 1200 x 1200 input dpi and 400 MB or more available hard disk space. Paper Size: Appropriate paper size Paper Tray: Upper hp Digital Photography: If desired for photo enhancement options
Features	Two-Sided Printing: Deselected

2. Select any other desired print settings, then click **OK**.



For a description of available print options, see [print settings](#).

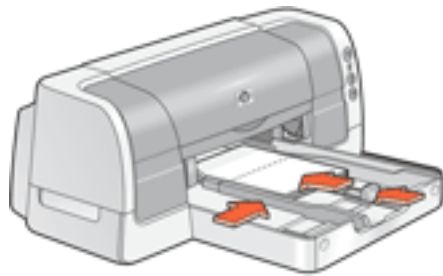
greeting cards

printing guidelines

- Unfold pre-folded cards, then place them in the In tray.
- If an **out of paper** message appears, verify that the cards are positioned properly in the In tray.
- For great results, use hp greeting card paper.

preparing to print

1. Remove the Out tray.
2. Slide out both paper guides, then remove all paper from the In tray.
3. Fan the edges of the greeting cards to separate them.
4. Align the edges of the cards, then place no more than 5 cards in the In tray.
5. Push the cards forward until they stop.
6. Slide the paper width guide *firmly* against the edges of the cards.
7. Slide the paper length guide all the way in, then slide the fine length guide *firmly* against the cards.



8. Replace the Out tray.

printing greeting cards



If your software program includes a greeting card printing feature, follow the instructions provided with the software program. Otherwise, follow the instructions below.

1. Open the [Printer Properties](#) dialog box, then select the following settings:

tab	setting
Setup	Paper Type: Automatic or appropriate greeting card paper Paper Size: Appropriate paper size Paper Tray: Upper
Features	Two-Sided Printing: Select if you want to use this feature

2. Select any other desired print settings, then click **OK**.



For a description of available print options, see [print settings](#).

posters

preparing to print

1. Raise the Out tray.
2. Slide out both paper guides, then remove all paper from the In tray.
3. Fan the edges of the sheets to separate them, then align the edges.
4. Place the paper in the In tray.
5. Slide the paper guides *firmly* against the paper.
6. Lower the Out tray.



Posters can be printed on plain paper from the [250-Sheet Plain Paper Tray](#).

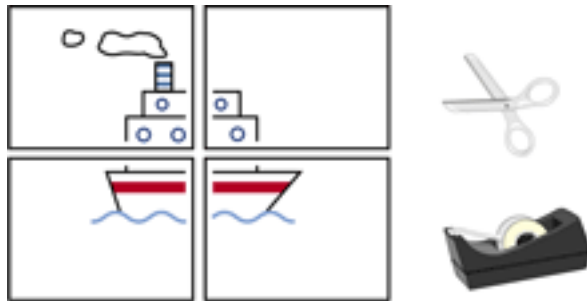
printing posters

1. Open the [Printer Properties](#) dialog box, then select the following setting:

tab	setting
Setup	Paper Type: Automatic or Plain Paper Paper Size: Appropriate size Orientation: Appropriate orientation Paper Tray: Upper , Lower , or Automatic
Features	Poster Printing: Select this option, then select 2x2 , 3x3 , or 4x4

2. Select any other desired print settings, then click **OK**.

3. After the poster has printed, trim the edges on the sheets, then tape the sheets together.



For a description of available print options, see [print settings](#).

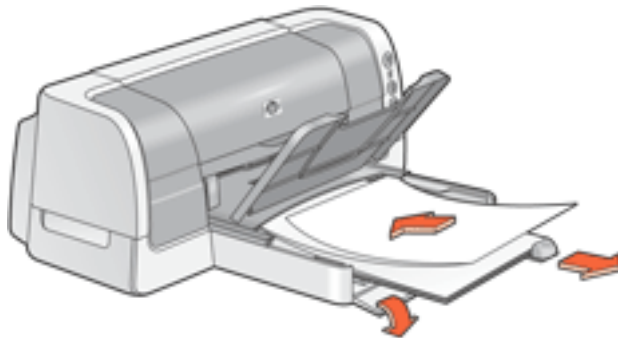
banners

printing guidelines

- See the printer *release notes* for specific printing information.
- Use hp banner paper for great results.

preparing to print

1. Raise the Out tray.
2. Slide out both paper guides, then remove all paper from the In tray.
3. Select up to 20 sheets of banner paper. Remove and discard any perforated strips.
4. Place the banner paper in the In tray with the unattached edge of the paper facing the printer.



5. Slide the paper guides *firmly* against the paper.
6. Lower the Out tray, then verify that the Out tray extension is not extended.



Do not extend the Out tray extension when printing banners.

printing banners



If your software program includes a banner printing feature, follow the instructions provided with the software program. Otherwise, follow the instructions below.

1. Open the [Printer Properties](#) dialog box, then select the following setting:

tab	setting
Setup	Paper Type: hp banner paper or other banner paper Paper Size: Banner [A4 (210 x 297 mm)] or Banner [Letter (8.5 x 11 in.)] Paper Tray: Upper

2. Select any other desired print settings, then click **OK**.



For a description of available print options, see [print settings](#).

iron-on transfers

printing guidelines

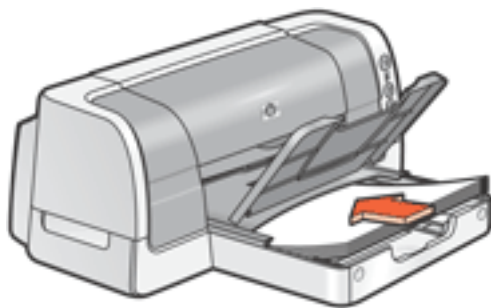
- When printing a document with a mirror-image, the text and pictures are horizontally reversed from what appears on the computer screen.



- Use hp iron-on t-shirt transfer paper for great results.

preparing to print

1. Raise the Out tray.
2. Slide out both paper guides, then remove all paper from the In tray.
3. Fan the edges of the iron-on transfer paper to separate them, then align the edges.



4. Place the iron-on transfer paper in the In tray with the printable side down.
5. Slide the paper guides *firmly* against the transfer paper.
6. Lower the Out tray.

printing iron-on transfers



If your software program includes an iron-on transfer printing feature, follow the instructions provided with the software program. Otherwise, follow the instructions below.

1. Open the [Printer Properties](#) dialog box, then select the following setting:

tab	setting
Setup	<p>Paper Type: Automatic or hp iron-on t-shirt transfers</p> <p>Print Quality: Normal or Best</p> <p>Paper Size: A4 (210 x 297 mm) or Letter (8.5 x 11 in.)</p> <p>Orientation: Click Mirror Image</p> <p>Paper Tray: Upper</p>

2. Select any other desired print settings, then click **OK**.



For a description of available print options, see [print settings](#).

maintenance

- [replacing print cartridges](#)
- [calibrating print cartridges](#)
- [automatically cleaning print cartridges](#)
- [manually cleaning print cartridges](#)
- [maintaining print cartridges](#)
- [maintaining the printer body](#)
- [refilling print cartridges](#)
- [removing ink from skin and clothing](#)
- [tools](#)

replacing print cartridges

Before buying replacement print cartridges, verify the correct [part numbers](#).

When a print cartridge is empty, leave the empty print cartridge in the print cartridge cradle until it is replaced. The printer requires both print cartridges to operate.



Warning! Keep both new and used print cartridges out of the reach of children.

To replace a print cartridge:

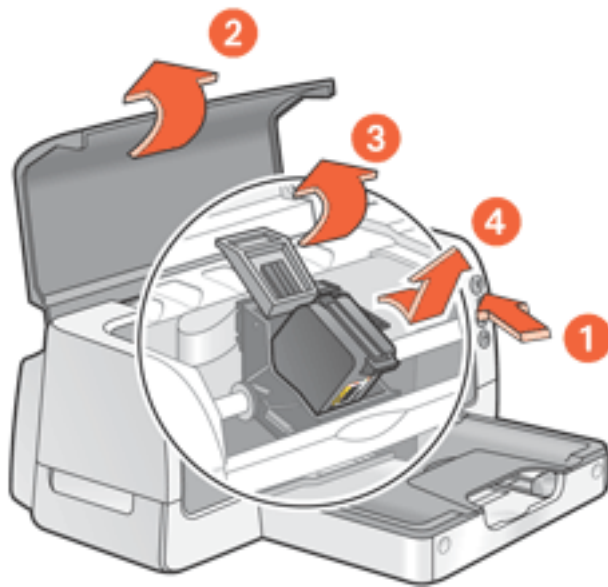
1. Press the **Power** button to turn on the printer.

2. Open the top cover.

The cradle moves to the center of the printer.

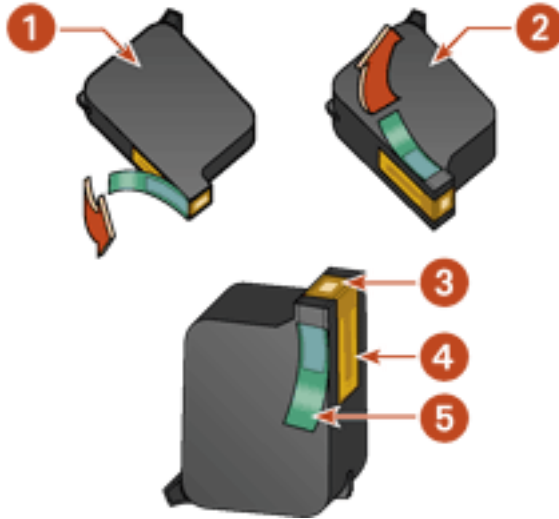
3. Raise the cradle latch.

4. Lift the print cartridge out of the print cartridge cradle to remove. See [print cartridge recovery](#) for information about HP's empty print cartridge return and recycle program.



1. press the power button 2. open top cover 3. raise cradle latch 4. lift print cartridge out of cradle

5. Remove the replacement print cartridge from its packaging and carefully remove the plastic tape.



1. black cartridge 2. color cartridge 3. ink nozzles 4. copper contacts 5. plastic tape

Caution! Do not touch the print cartridge ink nozzles or copper contacts. Touching these parts will result in clogs, ink failure, and bad electrical connections. Do not remove the copper strips. They are required electrical contacts.



1. copper contacts

6. Push the print cartridge firmly into the cradle.
7. Secure the cradle latch.
8. Close the top cover.

A [calibration page](#) prints to align the print cartridges.

Caution! If you are in the middle of printing, and you change a print cartridge, your current print job may be cancelled.

If the Print Cartridge Status light continues to blink after installing a new print cartridge, verify the part number on the cartridge matches one of the part numbers shown [here](#).

For information on how to recycle an empty print cartridge, see [print cartridge recovery](#).

calibrating print cartridges

After you install a print cartridge, the printer automatically calibrates the print cartridges to ensure the best print quality. However, if the black and color print cartridges become misaligned during the course of printing, you may wish to manually calibrate the cartridges.

The instructions for calibrating the print cartridges vary according to how the printer was installed on your computer.

To view the correct instructions, answer the following question:

Does this icon appear on your computer's desktop?



- [Yes](#) (use Utilities in printer assistant)
- [No](#) (use printer properties)



If the **Yes** option does not work, double-click the **printer assistant** icon on your computer's desktop, then click **Utilities**.

calibrating using printer properties

To calibrate print cartridges from printer properties:

1. Open [Printer Properties](#).
2. Select the **Services** tab.
3. Click the **Open the HP Toolbox** button.
4. Click **Calibrate the Device**, then follow the onscreen instructions.

automatically cleaning print cartridges

If your printed pages are missing lines or dots or if streaks appear, the print cartridges need to be cleaned.

The instructions for cleaning the print cartridges vary according to how the printer was installed on your computer. To view the correct instructions, answer the following question:

Does this icon appear on your computer's desktop?



- [Yes](#) (use Utilities in printer assistant)
- [No](#) (use printer properties)



If the **Yes** option does not work, double-click the **printer assistant** icon on your computer's desktop, then click **Utilities**.

cleaning using printer properties

To clean the print cartridges from printer properties:

1. Open [Printer Properties](#).
2. Select the **Services** tab.
3. Click the **Open the HP Toolbox** button.
4. Click **Clean the Print Cartridges**, then follow the onscreen instructions.

If your printouts are still missing lines or dots after cleaning, a print cartridge may be low on ink. If so, one or both print cartridges may need to be replaced.

manually cleaning print cartridges

If the printer is used in a dusty environment, a small amount of debris may accumulate inside the case. This debris can include dust, hair, carpet, or clothing fibers. When debris gets on the print cartridges and print cartridge cradle, it can cause ink streaks and smudges on printed pages. Ink streaking is easily corrected by manually cleaning the cartridges and cradle.

gathering cleaning supplies

You will need the following items to clean the print cartridges and cradle:

- Distilled water
- Cotton swabs or other soft, lint-free material that will not stick to the cartridges

Be careful not to get [ink on your hands or clothing](#) as you clean.

preparing to clean

1. Press the **Power** button to turn on the printer, then raise the top cover.
The cradle moves to the center of the printer.
2. Disconnect the power cord from the back of the printer.
3. Remove the print cartridges and place them on a piece of paper with the nozzle plate facing up.

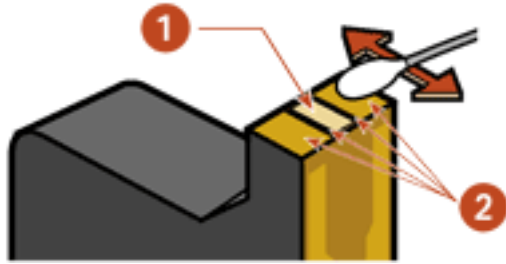
Caution! Do not leave the cartridges outside the printer for more than 30 minutes.

Caution! Do not touch the print cartridge ink nozzles or copper contacts. Touching these parts will result in clogs, ink failure, and bad electrical connections. Do not remove the copper strips. They are required electrical contacts.

cleaning the print cartridges and print cartridge cradle

1. Lightly moisten a cotton swab with distilled water.
2. Clean the face and edges of the first print cartridge with the swab, as shown in the following illustration.

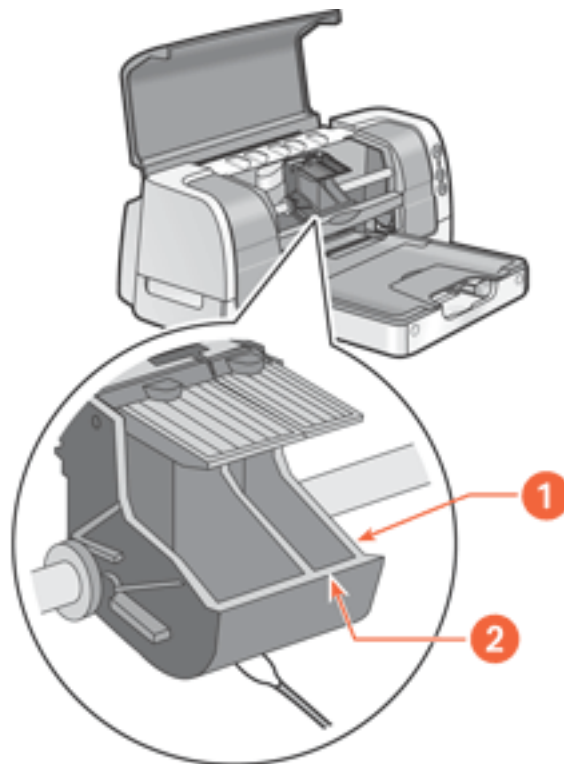
Do not wipe the nozzle plate.



1. nozzle plate 2. face and edges of print cartridge

3. Inspect the face and edges of the print cartridge for fibers.
Repeat steps 1 and 2 above if fibers are still present.
4. Repeat steps 1 through 3 for the second print cartridge.
5. Wipe the underside of the print cartridge cradle walls using clean, moistened cotton swabs.

Repeat this process until no ink residue appears on a clean swab.



1. print cartridge cradle 2. print cartridge cradle walls

6. Insert the print cartridges and close the printer's top cover.
7. Connect the power cord to the back of the printer.

A [calibration page](#) prints to align the print cartridges.

Repeat the cleaning procedure if ink streaks continue to appear on printed pages.

maintaining print cartridges

The following suggestions will help maintain HP print cartridges and ensure consistent print quality:

- Keep all print cartridges in their sealed packages in an upright position until they are needed. Print cartridges should be stored at room temperature (60–78 degrees F or 15.6–26.6 degrees C).
- Do not remove the plastic tape covering the ink nozzles until you are ready to install the print cartridge in the printer. If the plastic tape has been removed from the print cartridge, do not attempt to reattach it. Reattaching the tape damages the ink nozzles.
- If print cartridges are removed from their sealed containers, store them in an airtight container. For best results, store the black cartridge with the nozzle side up and the color cartridge with the nozzle side down. Do not allow anything to touch the nozzle plate.
- Once the print cartridges are installed in the printer, do not remove them unless they need to be manually cleaned. This prevents ink from evaporating or clogging the print cartridges.
- Do not unplug the printer until printing is complete and the printer is turned off. Use the Power button to turn off the printer.

maintaining the printer body

printer case exterior

Follow these guidelines when cleaning the outside of the printer:

- Use distilled water only. Do not use household cleaners or detergents.
- Use a soft, damp cloth to remove dust, smudges, stains, and spilled ink from the exterior of the printer case.

printer interior

Caution! Do not clean the printer's interior. Keep all liquids out of the interior.

print cradle rod

Do not lubricate the rod on which the print cradle moves. It is normal to hear noise when the printer is new.

handling and storage

Handle and store the printer in an upright, level position for maximum performance and reliability.

refilling print cartridges



To get the best performance from your HP printer, use only genuine, factory-filled HP print cartridges.

Caution! Damage that is directly attributable to modified or refilled HP print cartridges is specifically excluded from the HP printer's warranty coverage.

removing ink from skin and clothing

Follow these steps to remove ink from skin and clothing:

to remove ink from...	do this...
skin	Wash the affected area with an abrasive soap.
white fabric	Wash the fabric in cold water using chlorine bleach.
color fabric	Wash the fabric in cold water using sudsy ammonia.

Caution! Always use cold water to remove ink from fabric. Warm or hot water may set the ink color into the fabric.

tools

The printer software contains a number of useful tools to enhance the printer's performance.

To access the tools, answer the following question:

Does this icon appear on your computer's desktop?



- [Yes](#) (use Utilities in printer assistant)
- [No](#) (use printer properties)



If the **Yes** option does not work, double-click the **printer assistant** icon on your computer's desktop, then click **Utilities**.

using the printer properties

accessing the printer properties

1. Open the [Printer Properties](#) dialog box.
2. Click the **Services** tab. If you do not see the Services tab, then use [Utilities](#).
3. Click the **Open the HP Toolbox** button.

using the hp toolbox

The hp toolbox has these tabs:

- Device Services
- Estimated Ink Level
- Configuration

device services

The following tools are available on the Device Services tab:

- **Calibrate the Device:** Calibrates the print cartridges.
- **Clean the Print Cartridges:** Cleans the print cartridges.
- **Print a Test Page:** Print a test page to see if the printer can receive data.
- **Print a Diagnostic Page:** Print a diagnostic page when the HP Customer Care Center requests it.

estimated ink level

The following tools are available on the Estimated Ink Level tab:

- **Ink Levels:** Approximate ink level for each print cartridge.
- **Ordering Button:** Access button to HP online ordering (not available in all countries/regions).

configuration

The following tools are available on the Configuration tab:

- **Accessories:** Activate the Automatic Two-Sided Printing Module if it is installed on the printer.
- **Messages:** Configure software messages.

troubleshooting

Click the topic below that best describes the problem:

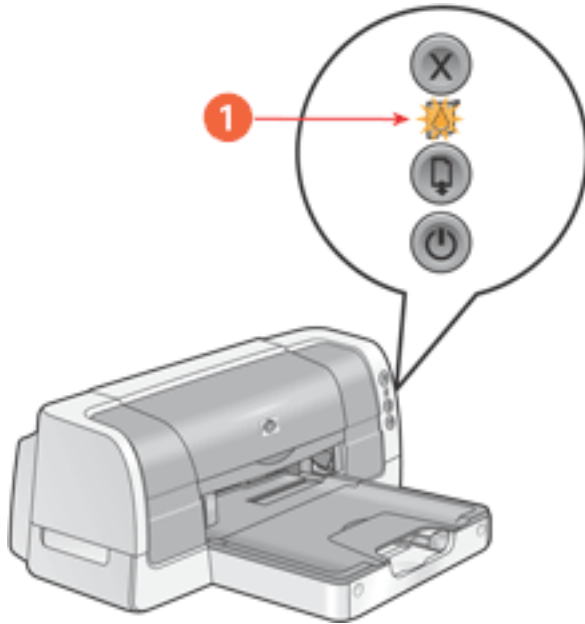
- [checking the print cartridge status](#)
- [printer is not printing](#)
- [problems with printouts](#)
- [printer lights are flashing or on](#)
- [printer is too slow](#)
- [two-sided printing problems](#)

If you continue to have problems after investigating the above topics, see [support](#).

checking the print cartridge status

understanding the print cartridge status light

The Print Cartridge Status light flashes when one or both of the print cartridges are low on ink, improperly installed, missing, or malfunctioning. This light also flashes if the wrong print cartridge type is used.

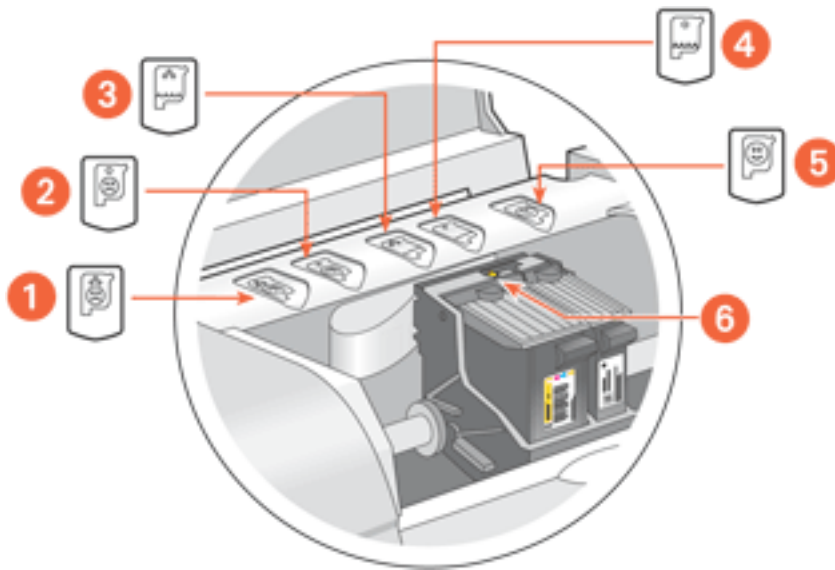


1. print cartridge status light

If the ink level is low in a print cartridge, the Print Cartridge Status light stops flashing when the printer's top cover is opened or the printer is printing. If the problem is not related to low ink, the light continues to flash after the cover is opened.

checking the print cartridge status






Open the printer's top cover. The arrow on the top of the print cartridge cradle points to one of five Print Cartridge Status icons revealing the status of the print cartridge.



1. tri-color cartridge problem icon 2. black cartridge problem icon 3. tri-color cartridge low-ink icon 4. black cartridge low-ink icon 5. cartridges OK icon 6. indicator arrow

troubleshooting problems with the tri-color or black print cartridge

If the arrow points to a print cartridge problem icon, the print cartridge is either missing, improperly installed, defective, or is the wrong print cartridge for the printer. Perform the following tasks to correct the problem:

icon	meaning	solution
	Tri-color print cartridge is defective or not the right part number .	<ol style="list-style-type: none">1. Remove and reinsert the print cartridge.2. If there is still a problem, verify that the correct print cartridge is installed. See print cartridges for part numbers.3. Replace the print cartridge if the problem persists. See replacing print cartridges for directions.
	Black print cartridge is defective or not the right part number .	
	Tri-color print cartridge is low on ink.	Replace the print cartridge .
	Black print cartridge is low on ink.	
	Print cartridges are functioning normally.	

verifying that the problem is solved

When you close the printer's top cover, the green light will be on with no flashing lights.

printer is not printing

verify the following

- The printer is connected to the power source.
- The cable connections are secure.
- The printer is turned on.
- The media is correctly placed in the [In tray](#) or [lower tray](#).
- The printer's top cover is closed.
- The [duplexer](#) or Rear Access Door is attached.
- The print cartridges are correctly installed. For installation instructions, see [replacing print cartridges](#).

check the printer lights

- If the **Power** light is blinking, the printer is in the process of printing.
- If the **Resume** light is blinking, press the **Resume** button.
- If the **Print Cartridge Status** light is blinking, see [checking the print cartridge status](#).
- If all lights are blinking, see [all lights are flashing](#).

select a topic below

If the printer still does not print, select the topic below that best describes the problem:

- [paper problems](#)
- [printer does not turn on](#)
- [USB problems](#)

paper problems

Click the topic below that best describes the problem:

- [paper jam](#)
- [out of paper](#)
- [will not feed paper](#)

paper jam

Caution! Do not remove a paper jam by pulling paper from the front of the printer. Doing so could damage the printer.

Follow each of these steps until the paper jam is cleared.

empty and reload the paper trays

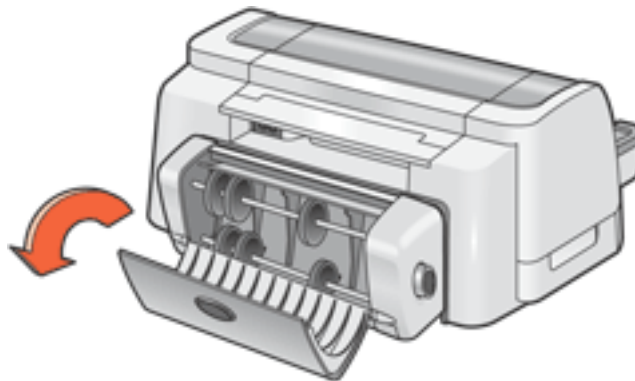
1. Remove the paper from the In and Out trays.

If you are printing labels, verify that a label did not become detached from the label sheet while passing through the printer.

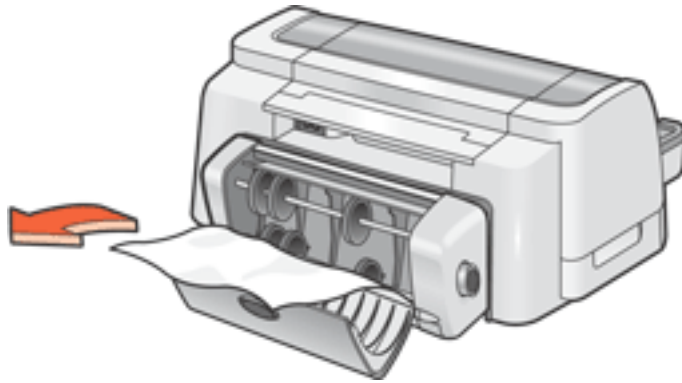
2. Reload the In tray.
3. Press the **Resume** button.

if the paper jam is not removed, empty the duplexer

1. Turn off the printer.
2. Press the button on top of the [duplexer](#), then lower the duplexer door.



3. Remove any paper from the duplexer.



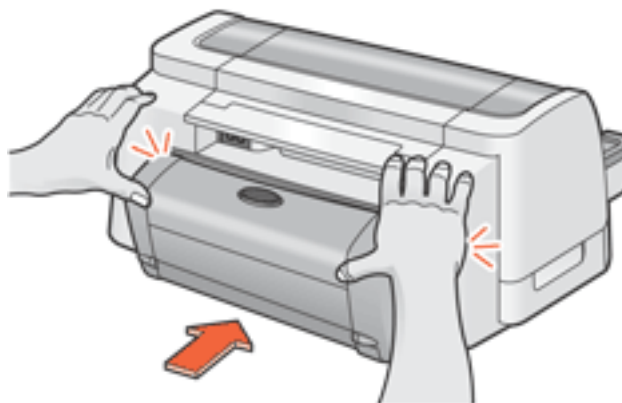
4. Close the duplexer door until it snaps shut.
5. Turn on the printer.
6. Reprint the document.

if the paper jam is not removed, clear paper from the printer body

1. Turn off the printer.
2. Press the buttons on the left and right sides of the duplexer, then remove the unit from the printer.

If the Rear Access Door is attached to the printer, push the two latch handles toward each other, then remove the door.

3. Remove any paper in the printer.
4. Push the duplexer into the printer until it snaps into place.



If using the Rear Access Door, push the door into the printer until it snaps into place.

5. Turn on the printer.
6. Reprint the document.

out of paper

if the In tray or lower tray contains paper

1. Slide the paper forward until it stops.
2. Adjust the length guide so that it touches the paper stack.
3. Press the **Resume** button.

if the In tray or lower tray is empty

1. Load paper in the tray.
2. Press the **Resume** button.

will not feed paper

if the In tray or lower tray contains paper

Try one or more of the following:

- Reduce the number of sheets in the paper tray.
- Remove and reload the paper tray.
- Use a different type of paper.

printer does not turn on

1. Disconnect the power cord from the printer.
2. Wait approximately 10 seconds.
3. Reconnect the power cord to the printer.
4. Press the **Power** button to turn on the printer.

USB problems

the error message "there was an error writing to LPT1" appears

The USB cable may not have been attached before installing the software. [Uninstall](#), then reinstall, the software.

To uninstall the software:

- Click [here](#).

—or—

- Click **Start > Programs > Hewlett-Packard > [hp deskjet] > uninstall software**, then follow the onscreen instructions.

the error message "there was an error writing to <name of USB port>" appears

The printer may not be receiving correct data from another USB device or the hub. Connect the printer directly to the USB port on the computer.

there are conflicting USB cable connections

A printing conflict may arise when the printer and several USB devices are attached to a hub. There are two methods for resolving the conflict:

- Attach the printer's USB cable directly to the computer.

—or—

- If the printer is attached to a hub, do not use other USB devices attached to the hub while printing.

problems with printouts

Click the topic below that best describes the problem:

- [print quality is poor](#)
- [text and images are misaligned](#)
- [document is printed off-center or at an angle](#)
- [parts of the document are missing or printed in the wrong place](#)
- [printout does not reflect new print settings](#)
- [photos are not printing correctly](#)
- [banner does not print correctly](#)
- [blank pages print](#)

print quality is poor

- [print is faded](#)
- [missing lines or dots](#)
- [too much or too little ink appears on the page](#)

print is faded

1. Check the [status of the print cartridges](#). If a print cartridge is low on ink, consider [replacing the print cartridge](#).
2. Verify that the plastic tape has been removed from both print cartridges.

missing lines or dots

If your printed pages are missing lines or dots, or if streaks appear, the print cartridges may need to be cleaned.

For cleaning instructions, see [automatically cleaning print cartridges](#).

too much or too little ink appears on the page

Do the following:

- **Extend the dry time**
 1. Open the [Printer Properties](#) dialog box.
 2. Select the **Features** tab, then click the **Advanced Features** button.
 3. Slide the **Dry Time slider** towards **More**.
 4. Click **OK** twice.
- **Select a paper type**
 1. Open the [Printer Properties](#) dialog box.
 2. Select the **Setup** tab, then select the appropriate paper type.
 3. Click **OK**.

text and images are misaligned

If the text and images on your printouts are misaligned, then [calibrate](#) the printer.

document is printed off-center or at an angle

1. Verify that the paper is correctly placed in the In tray or the [lower tray](#).
2. Verify that the paper guides fit *firmly* against the paper.
3. Reprint the document.

parts of the document are missing or printed in the wrong place

Open the [Printer Properties](#) dialog box and verify the following options:

tab	setting
Setup	Orientation: Verify the appropriate orientation Paper Size: Verify the appropriate paper size and margins Scale to Fit: Select to scale text and graphics to fit on the paper
Features	Poster Printing: Deselect this option if not printing a poster

printout does not reflect selected print settings

Some software applications allow you to set certain print settings, such as the print order.

The software application's print settings may differ from the print settings specified on the [Printer Properties](#) dialog box.

Change the appropriate print settings within the software application to match the settings on the Printer Properties dialog box.

photos are not printing correctly

1. Verify that the photo media is placed in the In tray with the print side down.
2. Slide the paper forward until it stops.
3. Slide the paper guides *firmly* against the paper.
4. Check the [status of the print cartridges](#).

check the printer properties

Open the [Printer Properties](#) dialog box and verify the following options:

tab	setting
Setup	Print Quality: Best Paper Type: An hp photo paper Paper Size: Appropriate paper size

banner does not print correctly

check the paper tray

- Unfold and refold the paper when several sheets feed into the printer at once.
- Confirm that the unattached edge of the banner paper stack is on top and facing the printer.
- Verify that the correct paper for banner printing is used.
- Verify that the [Out tray extension](#) is not extended.

check the printer properties

Open the [Printer Properties](#) dialog box and verify the following options:

tab	setting
Setup	Paper Type: Special Papers , then select hp banner paper Paper Size: Appropriate banner paper

check the software

- Verify that the software application you are using prints banners. Not all software applications print banners.
- If gaps appear at the ends of the sheets, verify that the printer software is operating correctly.
- Click **Start** > **Programs** > **Hewlett-Packard** > [**hp deskjet series**] > **release notes** to view *release notes* for known software issues.

blank pages print or color is missing from printout

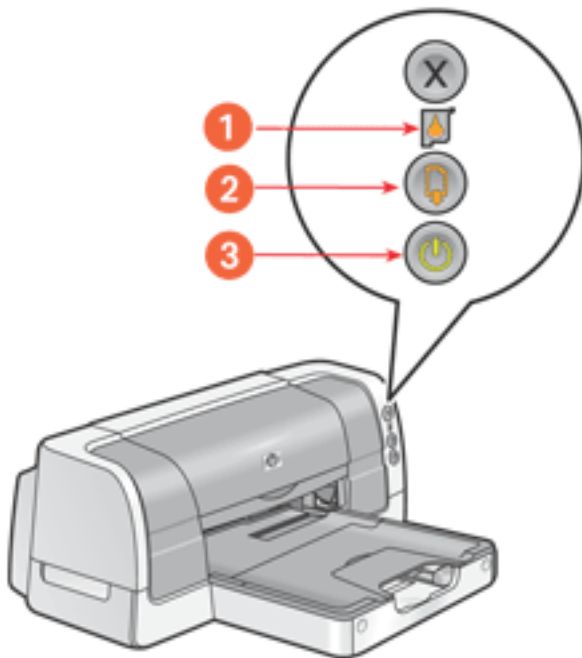
- The protective piece of plastic tape may still be attached to the print cartridges. Verify that the plastic tape has been removed from the print cartridges.
- The print cartridges may be out of ink. Replace one or both empty print cartridges.
- The printer may be in direct sunlight. Direct sunlight can adversely affect the Automatic Paper-Type Sensor. Move the printer out of direct sunlight, or open the [Printer Properties](#) dialog box and select a paper-type other than **Automatic**.

printer lights are on or flashing

- [what the flashing lights indicate](#)
- [print cartridge status light is on or flashing](#)
- [resume light is flashing](#)
- [power light is flashing](#)
- [all lights are flashing](#)

what the lights indicate

Printer lights that are on or flashing indicate the printer status.



1. print cartridge status light 2. resume light 3. power light

print cartridge status light is on or flashing

the top cover is open

Close the top cover.

there may be a problem with a print cartridge

- Verify that the [correct print cartridges](#) are installed.
- [Check if a print cartridge](#) is low on ink or improperly installed.

resume light is flashing

the printer may be out of paper

1. Place paper in the In tray or the [lower tray](#).
2. Press the **Resume** button on the front of the printer.

there may be a paper jam

Follow these instructions [to clear a paper jam](#).

the printer may be ready to print the second side of a two-sided document

1. Follow the onscreen instructions for printing the second side.
These instructions appear when you [manually print](#) a two-sided document.
2. Press the **Resume** button.

power light is flashing

the printer is preparing to print

The light stops flashing when the printer has received all data.

all lights are flashing

the printer may need to be restarted

1. Press the **Power** button to turn off the printer, then press the **Power** button to restart the printer.
Proceed to step 2 if the lights continue to flash.
2. Press the **Power** button to turn off the printer.
3. Disconnect the printer from the power source.
4. Reconnect the printer to the power source.
5. Press the **Power** button to turn on the printer.

printer is too slow

Several variables can slow the printer's performance. Click the topic below that best describes the printing conditions:

- [multiple software applications are open](#)
- [complex documents, graphics, or photographs are printing](#)
- [automatic paper-type option is enabled](#)
- [two-sided documents are printing](#)

If none of the above topics describes the printer's performance, then review the following:

- [printer driver is outdated](#)
- [computer does not meet system requirements](#)

multiple software applications are open

If too many software applications are open, the printer cannot print at its optimum speed.

Close all unnecessary software applications, then print the document again.

complex documents, graphics, or photographs are printing

Documents containing graphics or photographs print slower than text documents.

1. Open the [Printer Properties](#) dialog box.
2. On the **Setup** tab, select **PhotoREt**.
3. Reprint the document.
4. If the document still prints too slowly, then open the [Printer Properties](#) dialog box.
5. Click the **Features** tab, then click the **Advanced Features** button.
6. Select the **Low Memory Mode** option.
7. Reprint the document.



Print quality may be reduced if you use Low Memory Mode.

automatic paper-type option is enabled

When the automatic paper-type option is enabled, it takes a few seconds for the printer to scan the first page of the print job to determine the appropriate paper type.

To increase the print speed, turn off the Automatic Paper-Type Sensor.

For instructions on turning off the Automatic Paper-Type Sensor, see [using the automatic paper-type sensor](#).

two-sided documents are printing

Printing two-sided documents takes more time than printing single-sided documents.

printer driver is outdated

An outdated printer driver may be installed.

For information about updating the printer driver, click [here](#).

computer does not meet system requirements

1. Verify that the computer's hard disk space, RAM, and processor speed meet system requirements.

For more information, see [system requirements](#).

2. Increase free space on the hard drive.

If your computer does not have enough RAM, or a large amount of free space on the hard drive, the printer processing time will be longer.

two-sided printing problems

Select the topic that best describes the problem:

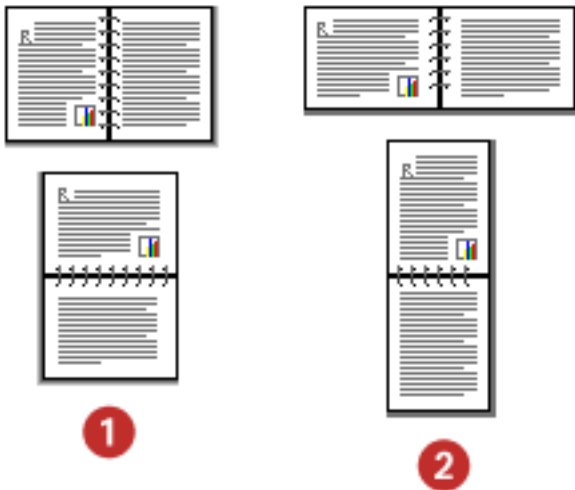
- [binding margin is in the wrong place](#)
- [only one side of the page prints when the two-sided printing option is selected](#)
- [paper jam occurs inside the duplexer](#)
- [automatic option for two-sided printing cannot be selected in the Features tab](#)

binding margin is in the wrong place

You may have chosen an incorrect paper orientation.

On the **Features** tab of the [Printer Properties](#) dialog box, verify that:

- **Long Side** is selected for binding along the long sides
- **Short Side** is selected for binding along the short sides



1. long-side binding 2. short-side binding

only one side of the page prints when the two-sided printing option is selected

Use the following solutions:

- Use a [media type and media size](#) supported by the duplexer.
- Print the document using the [manual two-sided printing](#) feature.

paper jam occurs inside the [duplexer](#)

Follow the instructions for clearing a paper jam in the [printer is not printing](#) section.

automatic option for two-sided printing cannot be selected in the Features tab

The printer driver may not be configured to use the [duplexer](#).

Follow these steps to configure the printer driver to use the duplexer:

1. Open the [Configuration](#) dialog box in Printer Assistant, then click the **configure button**.
2. Click the **Automatic Two-Sided Printing Accessory** check box.
3. Click the **Apply** button.
4. Close the **Configuration** dialog box.
5. Open the [Printer Properties](#) dialog box, then select the **Features** tab.

The Automatic option now appears beneath the Two-Sided Printing option.

specifications

- [printer specifications](#)
- [two-sided printing accessory \(duplexer\) specifications](#)
- [250-sheet plain paper tray specifications](#)
- [minimum system requirements](#)
- [environmental statement](#)
- [print cartridge recovery](#)
- [limited warranty](#)
- [regulatory notices](#)

printer specifications

hp deskjet 6120 series printer

model number: c8954a, c8954b

black text print speed *

Draft: Up to 20 pages per minute

Fast Normal: Up to 11 pages per minute

Normal: Up to 7 pages per minute

Best: Up to 1.4 page per minute

mixed text with color graphics print speed*

Draft: Up to 13 pages per minute

Fast Normal: Up to 6.9 pages per minute

Normal: Up to 5 pages per minute

Best: Up to 1.2 page per minute

*These are approximate figures. Exact speed varies with system configuration, software program, and document complexity.

black text resolution (depending on paper type)

Plain Paper/Draft: 600 x 300 dpi

Plain Paper/Fast Normal: 300 x 600 dpi

Plain Paper/Normal: 600 x 600 dpi

Inkjet Paper/Best: 600 x 600 dpi

color printing resolution (depending on paper type)

Plain Paper/Draft: 600 x 300 dpi

Plain Paper/Fast Normal: 300 x 600 dpi

Plain Paper/Normal: Color Layering 1200 x 600 dpi

Photo Paper/Best: PhotoREt or 4800 x 1200 optimized dpi color printing on premium photo papers; 1200 x 1200 input dpi

print technology

Drop-on-demand thermal inkjet printing

software compatibility

MS Windows compatible (95, 98, Me, 2000, NT 4.0 (SP 6 or higher), and XP)

Limited MS Windows 3.1 and DOS support

duty cycle

5000 pages per month

memory

8 MB built-in RAM

processor

96 MHz processor

buttons and lights

Cancel button

Print Cartridge Status light

Resume button and light

Power button and light

i/o interface

Centronics Parallel, IEEE 1284 Compliant

Universal Serial Bus (USB) 2.0 Full Speed compatible

printer dimensions

454 mm wide x 184.2 mm high x 378.8 mm deep

printer weight

5.03 kg (13.48 lb)

operating environment

Maximum operating conditions:

Temperature: 41 to 104 degrees F, 5 to 40 degrees C

Humidity: 15 to 80 percent RH non-condensing

Recommended operating conditions for best print quality:

Temperature: 59 to 95 degrees F or 15 to 35 degrees C

Humidity: 20 to 80 percent RH non-condensing

Storage conditions:

Temperature: -40 to 140 degrees F, -40 to 60 degrees C

power consumption

The default activation period for power saving mode is less than 5 minutes.

1.5 watts maximum when off

2.5 watts maximum when not printing

35 watts average when printing

power requirements

Input Voltage: 100 to 240 VAC ($\pm 10\%$)

Input Frequency: 50/60 Hz (± 3 Hz)

Accommodates the worldwide range of AC line voltages and frequencies.

declared noise emissions in accordance with ISO 9296

Best Mode:

Sound power level, LWAd: 5.5 Bels (A) [55 dB (A)]

Sound pressure level, LpAm (bystander positions): 42 dB (A)

Fast Normal Mode:

Sound power level, LWAd: 6.4 Bels(A) [64 dB (A)]

Sound pressure level, LpAm (bystander positions): 51 dB (A)

alignment

Skew:

± .006 mm/mm (.006 in/in) on plain paper and special paper

± .010 mm/mm (.010 in/in) on HP transparency films

± .012 mm/mm (.012 in/in) on envelopes, cards, and card-sized photo paper

Vertical:

± .003 mm/mm (.003 in/in) on plain paper and special paper

± .005 mm/mm (.005 in/in) on HP transparency films

media weights (printer only)

Paper:

U.S. Letter 60 to 90 g/m² (16 to 24 lb)

Legal 75 to 90 g/m² (20 to 24 lb)

Envelopes: 75 to 90 g/m² (20 to 24 lb)

Cards: Up to 200 g/m² (110 lb index max)

Photo: Up to 263.6 g/m² (145 lb)

Continuous (Banner) Paper: 60 to 90 g/m² (16 to 24 lb)

media handling

In tray capacity:

Plain paper sheets: Up to 150

Envelopes: Up to 22

Cards: Up to 60

Greeting cards: Up to 5

Labels: Up to 30 (use only U.S. Letter or A4-sized sheets)

Photo paper: Up to 50

Transparencies: Up to 30

Out tray capacity:

Plain Paper sheets: Up to 50

Envelopes: Up to 10

Cards: Up to 10

Greeting cards: Up to 30

Labels: Up to 20

Photo paper: Up to 30

Transparencies: Up to 30

media size

U.S. Letter 216 x 279 mm (8.5 x 11 in)

Legal 216 x 356 mm (8.5 x 14 in)

Executive 184 x 267 mm (7.25 x 10.5 in)

A4 210 x 297 mm

A5 148 x 210 mm

B5 182 x 257 mm

Envelopes:

U.S. No. 10 105 x 241 mm (4.12 x 9.5 in)

Invitation A2 111 x 146 mm (4.38 x 5.75 in)

DL 110 x 220 mm (4.33 x 8.66 in)

C6 114 x 162 mm (4.49 x 6.38in)

Index/Greeting Cards:

76 x 127 mm (3 x 5 in)

102 x 152 mm (4 x 6 in)

127 x 203 mm (5 x 8 in)

A6 Cards: 105 x 148.5 mm

Custom Size:

Width 77 to 216 mm (3.0 to 8.5 in)

Length 127 to 356 mm (5.0 to 14 in)

Labels:

U.S. Letter 216 x 279 mm (8.5 x 11 in)

A4 210 x 297 mm

Transparencies:

U.S. Letter 216 x 279 mm (8.5 x 11 in)

A4 210 x 297 mm

Photo (with tear-off tab):

102 x 152 mm (4 x 6 in)

print cartridges

Black: selection number 45, part number hp 51645

Tri-Color: selection number 78, part number hp c6578

two-sided printing accessory (duplexer) specifications

hp two-sided printing accessory

model no. c8955a

duty cycle

5000 pages per month

dimensions

Printer with duplexer

454 mm wide x 184.2 mm high x 440.3 mm deep

weight

Printer with duplexer and print cartridges

5.53 kg (14.82 lb)

declared noise emissions in accordance with ISO 9296

Best Mode:

Sound power level, LWAd with duplexer: 5.5 Bels(A) [55 dB (A)]

Sound pressure level, LpAm (bystander positions) with duplexer: 42 dB (A)

Fast Normal Mode:

Sound power level, LWAd with duplexer: 6.1 Bels(A) [61 dB (A)]

Sound pressure level, LpAm (bystander positions) with duplexer: 48 dB (A)

media weight

Paper: 60 to 90 g/m² (16 to 24 lb)

Cards: up to 160 g/m² (90 lb index maximum)

alignment

Skew:

± .009 mm/mm (.009 in/in) on plain paper and special paper with duplexer (2nd side)

± .012 mm/mm (.012 in/in) on cards (2nd side)

media size

Paper:

U.S. Letter: 216 x 279 mm (8.5 x 11 in)

Executive: 184 x 267 mm (7.25 x 10.5 in)

A4: 210 x 297 mm

A5: 148 x 210 mm

B5: 182 x 257 mm

Cards:

127 x 203 mm (5 x 8 in)

102 x 152 mm (4 x 6 in)

A6 105 x 148.5 mm

media type

hp plain paper or hp bright white inkjet paper

hp photo quality inkjet paper, matte finish

hp photo quality inkjet paper, semi gloss

hp premium inkjet heavyweight paper

hp felt-textured greeting card paper, ivory/half-fold

hp professional brochure & flyer paper, two-sided gloss

hp professional brochure & flyer paper, two-sided, matte finish

250-sheet plain paper tray specifications

hp 250-sheet plain paper tray

model no. pt 8956

duty cycle

5000 pages per month

dimensions

454 mm wide x 62 mm high x 440.3 mm deep

weight

Printer with 250-Sheet Plain Paper Tray, duplexer, and print cartridges installed

7.26 kg (19.44 lb)

media capacity

Plain Paper: 250 sheets

media weight

Letter/A4 Paper: 60 to 105 g/m² (16 to 28 lb)

Legal Paper: 75 to 105 g/m² (20 to 28 lb)

media size

Paper:

U.S. Letter: 216 x 279 mm (8.5 x 11 in)

U.S. Legal: 216 x 356 mm (8.5 x 14 in)

Executive: 184 x 267 mm (7.25 x 10.5 in)

A4: 210 x 297 mm

B5: 182 x 257 mm

minimum system requirements

Your computer must meet the following minimum requirements to use the printer:

Microsoft Windows XP

Minimum Processor Speed: Pentium 233 MHz

Required RAM: 128 MB

Required Free Hard Disk Space: 40 MB*

Microsoft Windows NT 4.0 (SP 6 or higher) or 2000

Minimum Processor Speed: Pentium 133 MHz

Required RAM: 64 MB

Required Free Hard Disk Space: 40 MB*

Microsoft Windows 95, 98, or Me

Minimum Processor Speed: Pentium 150 MHz

Required RAM: 32 MB

Required Free Hard Disk Space: 40 MB*

* If you are printing photographs or are printing at 4800 x 1200 Optimized dpi, you must have a large amount of free hard disk space available.

environmental statement

Hewlett-Packard continuously improves the design processes of its deskjet printers to minimize the negative impact on the office environment and on the communities where printers are manufactured, shipped, and used.

reduction and elimination

Paper use: The printer's automatic two-sided printing capability reduces paper usage and the resulting demands on natural resources. This printer is suited for the use of recycled papers in accordance with DIN 19 309.

Recycled paper: All paper documentation for this printer is printed on chlorine-free recycled paper.

Ozone: Ozone-depleting chemicals such as CFCs have been eliminated from Hewlett-Packard's manufacturing processes.

recycling

Design for recycling has been incorporated into this printer. The number of materials has been kept to a minimum while ensuring proper functionality and reliability. Dissimilar materials have been designed to separate easily. Fasteners and other connections are easy to locate, access, and remove using common tools. High priority parts have been designed to access quickly for efficient disassembly and repair.

Printer packaging: The packaging materials for this printer have been selected to provide maximum protection for the least cost possible, while attempting to minimize environmental impact and facilitate recycling. The rugged design of the HP Deskjet printer assists in minimizing both packaging materials and damage rates.

Plastic parts: All major plastics and plastic parts are marked according to international standards. All plastic parts used in the printer housing and chassis are technically recyclable and all use a single polymer.

Product longevity: To ensure the longevity of your HP Deskjet printer, HP provides the following:

- **Extended warranty:** See [limited warranty](#).
- **Replacement parts and consumables** are available for three (3) years after production has stopped (five (5) years in Germany).
- **Product take-back:** To return this product to HP at the end of its useful life, go to www.hp.com/go/recycle. To return empty print cartridges to HP, see [hp print cartridge recovery program](#).

energy consumption

This printer was designed with energy conservation in mind. This printer averages 2.5 watts in stand-by mode. Not only does this save natural resources, but it also saves money without affecting the high performance of the printer.

This product qualifies for the ENERGY STAR® Program (U.S. and Japan). ENERGY STAR is a voluntary program established to encourage the development of energy-efficient office products.



ENERGY STAR is a US registered service mark of the USEPA. As an ENERGY STAR partner, Hewlett-Packard Company has determined that this product meets ENERGY STAR Guidelines for energy efficiency.

Energy consumption in off-mode: When the printer is off, a minimal amount of energy is still being consumed. Energy consumption can be prevented by turning the printer power off, then disconnecting the end of the printer power cord from the electrical source.

print cartridge recovery

Customers interested in recycling their genuine HP print cartridges can participate in HP's empty print cartridge return and recycle program. HP offers this program in the United States, Puerto Rico, France, Germany, and Singapore, more countries than any other print cartridge manufacturer in the world. This program is provided as a free service to HP customers as an environmentally sound solution for these products at end-of-life.

To participate, simply request postage-paid return envelopes or bulk boxes via the Web at www.hp.com/go/recycle. Customers will be asked for their name, phone number, address, and how many bulk boxes or envelopes they would like. Postage-paid envelopes and/or bulk boxes will be shipped within two days.

Because HP's unique recycling processes are very sensitive to material contamination, we cannot take back and recycle cartridges from other manufacturers. The end products of the recycling process are used in the manufacture of new products, and HP must ensure the composition of the material is consistent. To do that, we recycle only HP original cartridges. This program does not extend to refilled cartridges.

Returned cartridges are separated for purification into raw materials for use in other industries to manufacture new products. Examples of products made from recycled HP print cartridge materials include automobile parts, trays used in microchip fabrication processes, copper wire, steel plates, and the precious materials used in electronics. Depending on the model, HP is able to recycle up to 65% of the print cartridge by weight. The remaining parts that cannot be recycled (ink, foam and composite parts) are disposed of in an environmentally responsible manner.

limited warranty

region	software	printer
North America (including Canada)	90 days	1 year
Asia Pacific	90 days	1 year
Europe	90 days	1 year
Latin America	90 days	1 year

extent of limited warranty

Hewlett-Packard (HP) warrants to the end-user customer that the HP products specified above will be free from defects in materials and workmanship for the duration specified above, which duration begins on the date of purchase by the customer. Customer is responsible for maintaining proof of date of purchase.

1. For software products, HP's limited warranty applies only to a failure to execute programming instructions. HP does not warrant that the operation of any product will be uninterrupted or error free.
2. HP's limited warranty covers only those defects which arise as a result of normal use of the product, and do not apply to any:
 - Improper or inadequate maintenance or modification;
 - Software, interfacing, media, parts, or supplies not provided or supported by HP; or
 - Operation outside the product's specifications.
3. For HP printer products, the use of a non-HP ink cartridge or a refilled ink cartridge does not affect either the warranty to the customer or any HP support contract with the customer. However, if printer failure or damage is attributable to the use of a non-HP or refilled ink cartridge, HP will charge its standard time and materials charges to service the printer for the particular failure or damage.
4. If HP receives, during the applicable warranty period, notice of a defect in any software, media, or ink cartridge covered by HP's warranty, HP shall replace the defective product. If HP receives notice of a defect in any hardware product covered by HP's warranty during the applicable warranty period, HP shall either repair or replace the defective product at HP's option.

5. If HP is unable to repair or replace, as applicable, a defective product covered by HP's warranty, HP shall, within a reasonable time after being notified of the defect, refund the purchase price of the product.
6. HP shall have no obligation to repair, replace, or refund until the customer returns the defective product to HP.
7. Any replacement product may be either new or like-new, provided that it has functionality at least equal to that of the product being replaced.
8. HP's limited warranty is valid in any country where the covered HP product is distributed by HP except for the Middle-East, Africa, Argentina, Brazil, Mexico, Venezuela, and France's "Departements D'Outre-Mer"; for those excepted areas, the warranty is valid only in the country of purchase. Contracts for additional warranty services, such as on-site service, may be available from any authorized HP service facility where the product is distributed by HP or by an authorized importer.
9. Any applicable print cartridge warranty shall not apply to HP print cartridges that have been refilled, remanufactured, refurbished, misused, or tampered with in any way.

limitations of warranty

1. TO THE EXTENT ALLOWED BY LOCAL LAW, NEITHER HP NOR ITS THIRD-PARTY SUPPLIERS MAKE ANY OTHER WARRANTY OR CONDITION OF ANY KIND, WHETHER EXPRESS OR IMPLIED, WITH RESPECT TO THE HP PRODUCTS, AND SPECIFICALLY DISCLAIM THE IMPLIED WARRANTIES OR CONDITIONS OF MERCHANTABILITY, SATISFACTORY QUALITY, AND FITNESS FOR A PARTICULAR PURPOSE.

limitations of liability

1. To the extent allowed by local law, the remedies provided in this Warranty Statement are the customer's sole and exclusive remedies.
2. TO THE EXTENT ALLOWED BY LOCAL LAW, EXCEPT FOR THE OBLIGATIONS SPECIFICALLY SET FORTH IN THIS WARRANTY STATEMENT, IN NO EVENT WILL HP OR ITS THIRD-PARTY SUPPLIERS BE LIABLE FOR DIRECT, INDIRECT, SPECIAL, INCIDENTAL, OR CONSEQUENTIAL DAMAGES, WHETHER BASED ON CONTRACT, TORT, OR ANY OTHER LEGAL THEORY AND WHETHER ADVISED OF THE POSSIBILITY OF SUCH DAMAGES.

local law

1. This Warranty Statement gives the customer specific legal rights. The customer may also have other rights which vary from state to state in the United States, from province to province in Canada, and from country to country elsewhere in the world.
2. To the extent that this Warranty Statement is inconsistent with local law, this Warranty Statement shall be deemed modified to be consistent with such local law. Under such local law, certain disclaimers and limitations of this Warranty Statement may not apply to the customer. For example, some states in the United States, as well as some governments outside the United States (including provinces in Canada), may:
 - Preclude the disclaimers and limitations in this Warranty Statement from limiting the statutory rights of a consumer (e.g., the United Kingdom);
 - Otherwise restrict the ability of a manufacturer to enforce such disclaimers or limitations; or
 - Grant the customer additional warranty rights, specify the duration of implied warranties which the manufacturer cannot disclaim, or not allow limitations on the duration of implied warranties.
3. **FOR CONSUMER TRANSACTIONS IN AUSTRALIA AND NEW ZEALAND, THE TERMS IN THIS WARRANTY STATEMENT, EXCEPT TO THE EXTENT LAWFULLY PERMITTED, DO NOT EXCLUDE, RESTRICT, OR MODIFY, AND ARE IN ADDITION TO, THE MANDATORY STATUTORY RIGHTS APPLICABLE TO THE SALE OF HP PRODUCTS TO SUCH CUSTOMERS.**

warranty upgrade options

After the free phone support period, contact your HP dealer or call the support phone number for your country/region to discover the available support options.

regulatory notices

hewlett-packard company

This device complies with part 15 of the FCC Rules. Operation is subject to the following two conditions:

- This device may not cause harmful interference, and
- This device must accept any interference received, including interference that may cause undesired operation.

Pursuant to part 15.21 of the FCC Rules, any changes or modifications to this equipment not expressly approved by Hewlett-Packard Company may cause harmful interference, and void your authority to operate this equipment. Use of a shielded data cable is required to comply with the Class B limits of part 15 of the FCC Rules.

For further information, contact:

Hewlett-Packard Company

Manager of Corporate Product Regulations

3000 Hanover Street

Palo Alto, CA 94304

(605) 857-1501

note

This equipment has been tested and found to comply with the limits for a Class B digital device, pursuant to part 15 of the FCC rules. These limits are designed to provide reasonable protection against harmful interference in a residential installation. This equipment generates, uses, and can radiate radio frequency energy and, if not installed and used in accordance with the instructions, can cause harmful interference to radio communications. However, there is no guarantee that interference will not occur in a particular installation. If this equipment does cause harmful interference to radio or television reception, which can be determined by turning the equipment off and on, the user is encouraged to try to correct the interference by one or more of the following measures:

- Reorient or relocate the receiving antenna.
- Increase the separation between the equipment and the receiver.
- Connect the equipment into an outlet on a circuit different from that to which the receiver is connected.
- Consult the dealer or an experienced radio/TV technician for help.

LED indicator statement

The display LEDs meet the requirements of EN 60825-1.

この装置は、情報処理装置等電波障害自主規制協議会（VCCI）の基準に基づくクラスB情報技術装置です。この装置は、家庭環境で使用することを目的としていますが、この装置がラジオやテレビジョン受信機に近接して使用されると受信障害を引き起こすことがあります。
取り扱い説明書に従って正しい取り扱いをして下さい。

사용지 안내문 (B급 기기)
이 기기는 비업무용으로 전자파 적합 인증 받은 기기로서, 주거지역에서는 물론 모든 지역에서 사용될 수 있습니다.

Regulatory Model Identification Number

For regulatory identification purposes, this product is assigned a Regulatory Model Number.

The Regulatory Model Number for this printer is VCVRA-0105.

This regulatory number should not be confused with the marketing name (hp deskjet 6120 series) or product number (C8954a, C8954b).

Index

[Numbers](#) [A](#) [B](#) [C](#) [D](#) [E](#) [F](#) [G](#) [H](#) [I](#) [J](#) [K](#) [L](#) [M](#) [N](#) [O](#) [P](#) [Q](#) [R](#) [S](#) [T](#) [U](#) [V](#) [W](#) [X](#) [Y](#) [Z](#)

Numbers

[250-sheet plain paper tray](#)

A

[accessibility](#)

[acknowledgements](#)

[advanced features](#)

automatic paper-type sensor

[about](#)

[using](#)

[automatic two-sided printing accessory](#)

automatic two-sided printing

[about](#)

[paper jams](#)

[problems](#)

B

[banners](#)

[buttons](#)

C

[calibrating the print cartridge](#)

cleaning print cartridges

[automatically](#)

[manually](#)

[color tab](#)

connectivity

[about](#)

[network](#)

[parallel port](#)

[USB port](#)

D

[default settings, changing](#)

duplexer

[about](#)

[installing](#)

[specifications](#)

E

[envelopes](#)

[environmental statement](#)

F

[features tab](#)

features

[about](#)

[special](#)

G - H

[greeting cards](#)

I - K

[iron-on transfers](#)

L

[labels](#)

lights

[about](#)

[flashing](#)

[flashing \(all\)](#)

[on](#)

[power light is flashing](#)

[resume light is flashing](#)

M

maintenance

[print cartridge](#)

[printer body](#)

[minimum system requirements](#)

N - O

[notices and acknowledgements](#)

[notices, regulatory](#)

P - Q

[paper jam](#)

[paper trays](#)

[photographs](#)

[posters](#)

print cartridges

[about](#)

[calibrating](#)

[cleaning automatically](#)

[cleaning manually](#)

[cleaning using the hp toolbox](#)

[maintenance](#)

[recovery](#)

[refilling](#)

[replacing](#)

[status of](#)

[print settings](#)

[print status box](#)

printer driver

[about](#)

[color tab settings](#)

[features tab settings](#)

[setup tab settings](#)

printing

[banners](#)

[digital photographs](#)

[documents](#)

[greeting cards](#)

[index cards](#)

[iron-on transfers](#)

[labels](#)

[not printing](#)

[paper problems](#)

[photographs](#)

[plain paper](#)

[posters](#)

[printout problems](#)

[screen images](#)

[slow](#)

[small media](#)

[transparencies](#)

[printout problems](#)

R

[regulatory notices](#)

[removing ink from skin and clothing](#)

S

[setup tab](#)

[special features](#)

specifications

[duplexer](#)

[printer](#)

[system requirements](#)

T

[terms and conventions](#)

[tools](#)

[transparencies](#)

[troubleshooting](#)

two-sided printing

[about](#)

[about the duplexer](#)

[problems](#)

U - V

USB

[about](#)

[problems](#)

W - Z

[warranty](#)