



hp digital
home networking



phoneline gateway
hn200p
quick start guide

The Hewlett-Packard® Company makes no warranty of any kind with regard to this material, including, but not limited to, the implied warranties of merchantability and fitness for a particular purpose.

The information in this document is subject to change without notice.

HP shall not be liable for errors contained herein or for incidental or consequential damages in connection with the furnishing, performance, or use of this material.

This document contains proprietary information that is protected by copyright. All rights are reserved. No part of this document may be photocopied, reproduced, or translated to another language without the prior written consent of HP.

Hewlett-Packard Company
Home Networking Solutions Organization
3000 Hanover St
Palo Alto, Ca 94304

© Hewlett-Packard Company, 2001. All rights reserved.

Hewlett-Packard is a registered trademark of Hewlett-Packard Company in the United States of America and other countries.

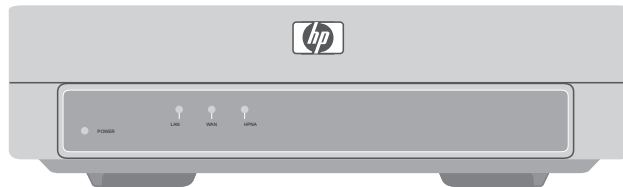
Microsoft, MS, MS-DOS, and Windows are registered trademarks of Microsoft Corporation.

Other brand or product names are trademarks of their respective holders.

phoneline gateway

hn200p

Thank you for choosing the Hewlett-Packard Digital Home Networking Phoneline Gateway. This *quick start guide* provides easy set-up instructions. For additional information, see the *user's guide* included on the CD-ROM.



box contents

- One Phoneline Gateway
- One Phoneline USB Network Adapter
- One installation and documentation CD-ROM
- One AC Power Adapter
- One USB cable
- One Ethernet cable (blue)
- One phone line cable
- One *quick start guide*
- One warranty sheet

before you begin

- 1 Verify that all of the box contents are included.
- 2 Confirm that:
 - The computers you intend to connect to the Gateway are all running either Windows 98, 98SE, Me, 2000, or XP. Windows 2000 and XP Professional require administrative privileges to install this software — see your user documentation for details.
 - Each computer has a CD-ROM drive.
 - A broadband (DSL or cable) modem has been installed and is connected to one of the computers via an Ethernet cable.
 - Each computer to be connected to the Phonline network:
 - Has a Phonline network adapter (internal or external) installed.

- Has a phone line cable running from the adapter to a wall phone line jack.
- Shares the same phone line.

- 3 To avoid conflicts, uninstall or disable any connection-sharing software, such as 3COM HomeClick, Microsoft Internet Connection Sharing (ICS), Intel Anypoint ISS, or proxy software such as WinGate, Sygate, or other similar applications. You no longer need this type of application when you install the Phonline Gateway.

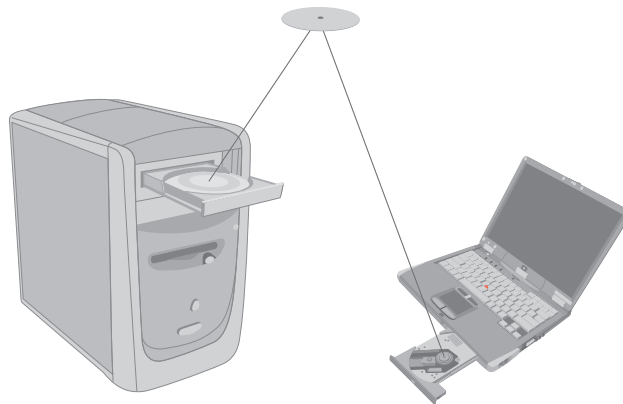
To uninstall a program:

- a) Select **Start > Settings > Control Panel**.
- b) Double-click **Add/Remove Programs**.
- c) Select the connection-sharing or proxy software application to be removed.
- d) Click **Add/Remove**, then click **Yes**.

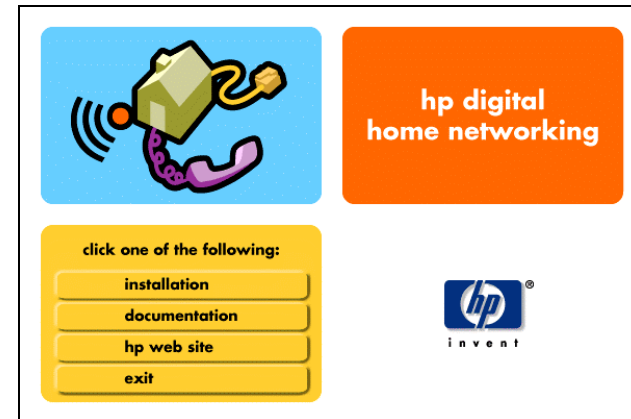
2

installing the phonline gateway and connecting the first computer

- 1 Remove the CD-ROM from the box.
- 2 If the computer is off, turn it on.
- 3 Insert the CD-ROM into the CD-ROM drive of the computer that is connected to your broadband (cable or DSL) modem.

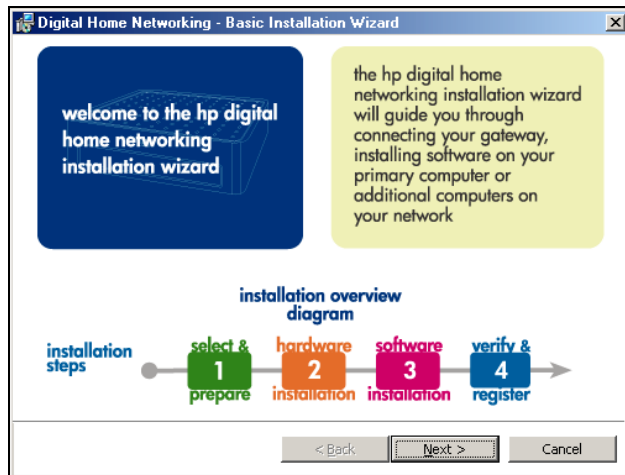


- 4 The HP welcome screen appears:



Note: This screen appears only if Autorun is enabled. If you don't see this screen, double-click **My Computer**. Right-click **Compact Disc**. Then click **AutoPlay** to launch the installed program.

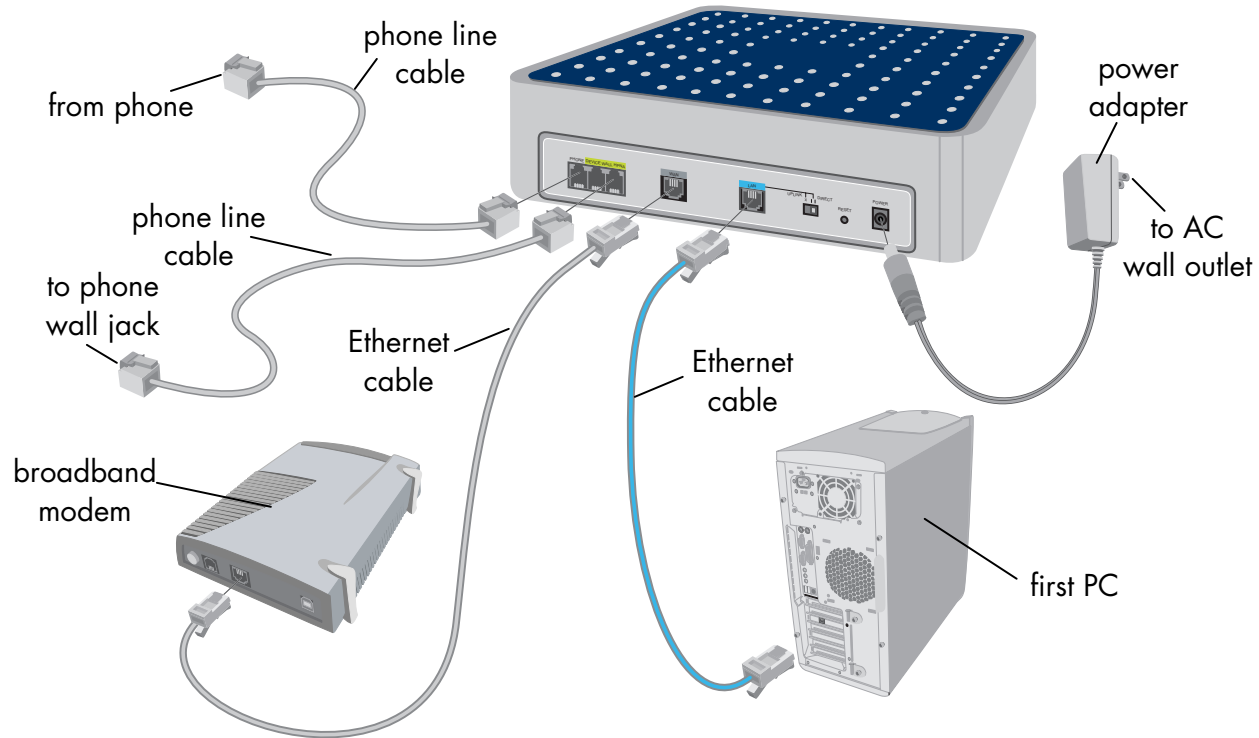
- 5 Select **installation**. The installation wizard screen appears.



- 6 Follow the onscreen instructions to set up and configure the Phoneline Gateway, and to connect the cables. Select **First PC** when you are prompted to set up either a first PC or an additional PC.
- 7 You will be asked to make cable connections with all equipment powered on. This is necessary to interactively detect that each connection has been properly made. There is no danger to you or to your equipment.

4

8 Use this diagram to help you connect the cables:



phonline gateway 5

registering the phonline gateway

Make sure you register your product with HP after the installation process is complete. The registration option has been pre-selected for you. HP registration provides you with automatic notification of updates to the firmware installed on the Gateway and to the software installed on the PC.

If you choose to register your product at a later date, enter the following into the address window of your Web browser (such as Internet Explorer or Netscape):

<http://register.hp.com>

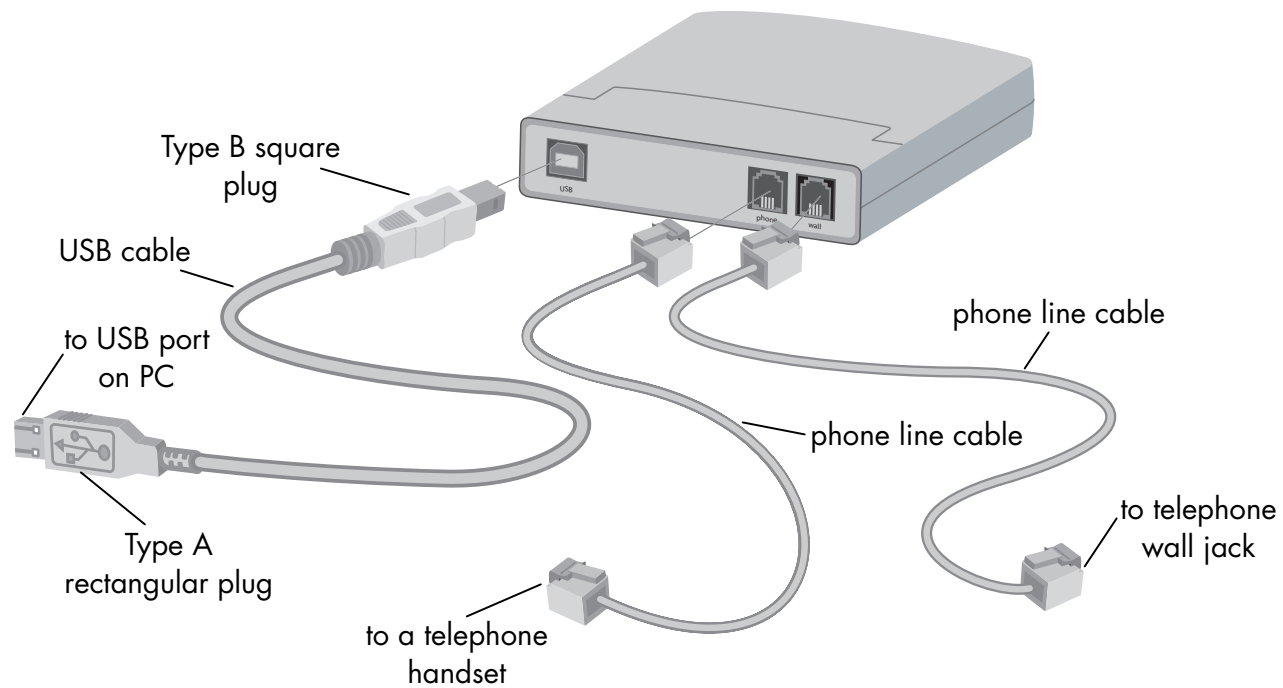
Then press Enter.

connecting the phonline USB network adapter (optional)

To provide you with an additional type of network cabling connection, a Phonline USB Network Adapter is included in this kit. You can add the network adapter after you have installed the Phonline Gateway and the first computer. You can use the network adapter to:

- Change the first computer to a phone line connection instead of an Ethernet connection.
 - Connect the second (or any additional) computer to the network.
- 1** To connect an additional computer, skip to step 2. To change the first computer to a phone line connection instead of an Ethernet connection, disconnect the Ethernet cable between the first computer and the Phonline Gateway.
 - 2** Turn off the computer.

- 3** Plug the Type B square end of the USB cable into the USB port of the adapter as illustrated in the following diagram:



phoneline gateway **7**

- 4 Plug the Type A rectangular end of the USB cable into the USB port on the computer.
- 5 Plug one end of the phone line cable into the wall port on the adapter (see the cabling diagram shown previously).
- 6 Plug the other end of the phone line cable into a wall phone jack.

installing the driver

You must install the driver for each additional computer added to the network.

- 1 Turn on the computer and insert the CD-ROM into the CD-ROM drive of the computer.

Note: *If the HP welcome screen appears, click **exit**.*

- 2 The computer operating system automatically recognizes the new USB network adapter, and the Add New Hardware screen appears.

8

- 3 Accept the default selection, **Automatic search for a better driver**, then click **Next**.
- 4 The computer operating system automatically finds and installs the correct driver from the CD-ROM. Once a successful installation is reported, click **Finish**.
- 5 If the wizard asks you for permission to restart the computer, click **Yes**. If the wizard does not appear, restart the computer.
- 6 When the HP welcome screen appears, click **installation**.
- 7 Follow the onscreen instructions. Select **Add additional computer** when you are prompted to install either a first PC or an additional PC.
- 8 When the installation is completed, click **Finish**.

registering the network adapter

Make sure you register your product with HP after the installation process is complete. Enter the following into the address window of your Web browser (such as Internet Explorer or Netscape):

<http://register.hp.com>

Then press Enter.

connecting a phone to the network adapter

Connect a telephone to the phone port of the adapter as illustrated in the cabling diagram shown previously.

Caution: *The phone port on the adapter does not contain a microfilter. If your Phonenumber network includes a DSL connection, you must insert the microfilter that came with your DSL modem into the phone port of the adapter, then insert the telephone handset into the microfilter's phone port. Use of the microfilter prevents distortion of the telephone signal by the DSL modem.*

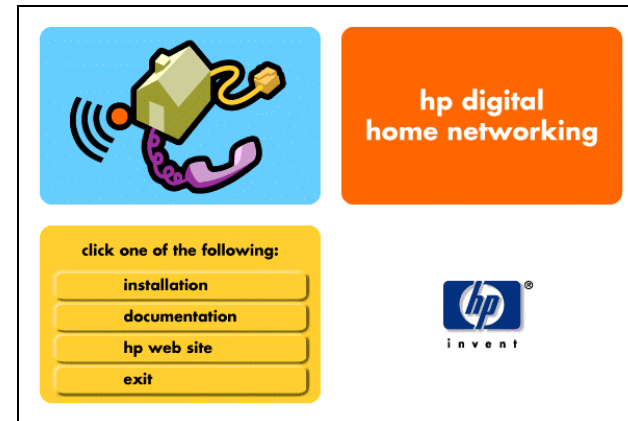
installing additional network computers

- 1 Turn on the computer to be connected and insert the CD-ROM in the CD-ROM drive.
- 2 When the HP welcome screen appears, click **installation**.
- 3 Follow the onscreen instructions. Select **Add additional computer** when you are prompted to install either a first PC or an additional PC.
- 4 When the installation is completed, click **Finish**.
- 5 Repeat Steps 1 to 4 for each additional computer on your home network.

Note: Keep the CD-ROM in a safe place for future use.

accessing additional documentation

- 1 Insert the CD-ROM into the CD-ROM drive of the computer.
- 2 Click **documentation** on the HP welcome screen.



- 3 Click **user's guide** or any other option you want to review.

Note: Keep the CD-ROM in a safe place for future use.

product and support information

- HP Customer Care: (208) 323-2551;
<http://www.hp.com/cposupport>
- Online product information and technical support: **<http://www.hp.com/go/homenetworking>**
(includes a home networking tutorial, FAQs, and other information)