

**hp** digital  
home networking



phoneline USB  
network adapter  
hn210p  
**quick start guide**

The Hewlett-Packard® Company makes no warranty of any kind with regard to this material, including, but not limited to, the implied warranties of merchantability and fitness for a particular purpose.

The information in this document is subject to change without notice.

HP shall not be liable for errors contained herein or for incidental or consequential damages in connection with the furnishing, performance, or use of this material.

This document contains proprietary information that is protected by copyright. All rights are reserved. No part of this document may be photocopied, reproduced, or translated to another language without the prior written consent of HP.

Hewlett-Packard Company  
Home Networking Solutions Organization  
3000 Hanover St  
Palo Alto, Ca 94304

© Hewlett-Packard Company, 2001. All rights reserved.

Hewlett-Packard is a registered trademark of Hewlett-Packard Company in the United States of America and other countries.

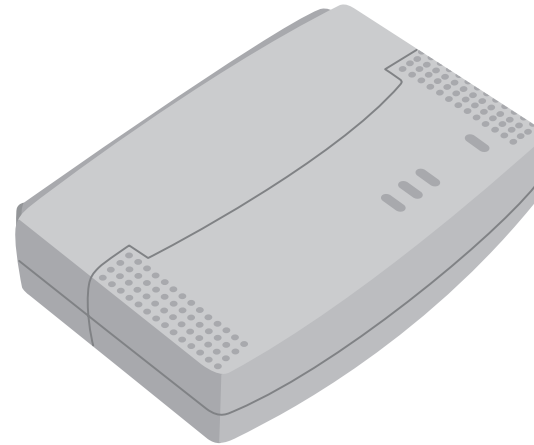
Microsoft, MS, MS-DOS, and Windows are registered trademarks of Microsoft Corporation.

Other brand or product names are trademarks of their respective holders.

# phoneline USB network adapter

hn210p

Thank you for choosing the Hewlett-Packard Digital Home Networking Phoneline USB Network Adapter. This *quick start guide* provides easy set-up instructions. For additional information, see the *user's guide* included on the CD-ROM.



**phoneline USB network adapter 1**

## box contents

- One Phoneline USB Network Adapter
- One installation and documentation CD-ROM
- One USB cable
- One phone line cable
- One *quick start guide*
- One warranty sheet

## before you begin

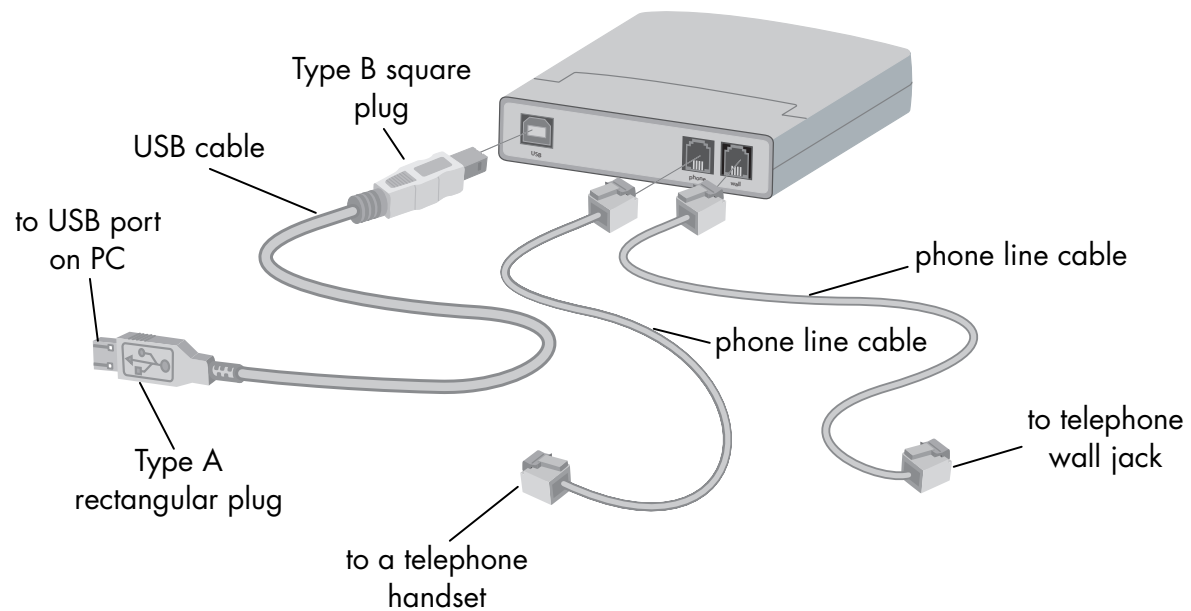
- 1** Verify that all of the box contents are included.
- 2** Confirm that the computers you plan to connect to the Adapter are all running either Windows 98, 98SE, Me, 2000, or XP. Windows 2000 and XP Professional require administrative privileges to install this software — see your user documentation for details.
- 3** Verify that each computer you're connecting to the network has a CD-ROM drive to run the installation software.

**Note:** *All computers to be added to network must share the same phone line.*

- 4** If the computer is on, turn it off.

## connecting the network adapter

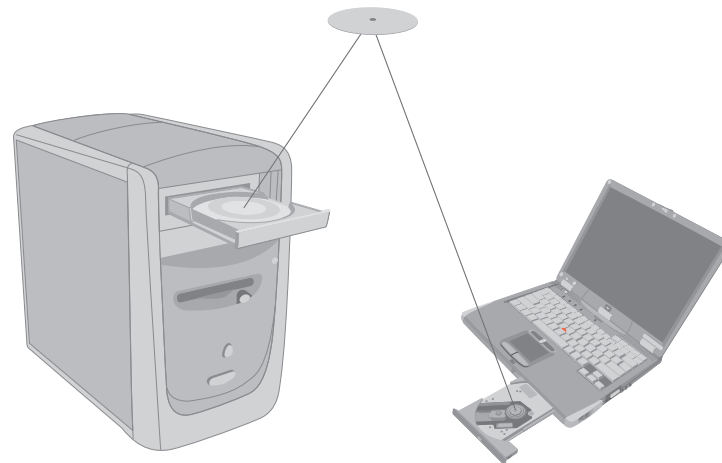
- 1 Plug the Type B square end of the USB cable into the USB port of the adapter as illustrated in the following diagram:



- 2** Plug the Type A rectangular end of the USB cable into the USB port on the computer.
- 3** Plug one end of the phone line cable into the Wall port on your adapter (see the cabling diagram in step 1).
- 4** Plug the other end of the phone line cable into a wall phone jack.

## installing the driver

- 1** Turn on the computer and insert the CD-ROM into the CD-ROM drive of the computer.



**4**

- 2** The computer operating system automatically recognizes the new USB network adapter, and the Add New Hardware screen appears.
- 3** Accept the default selection, **Automatic search for a better driver**, then click **Next**.
- 4** The computer operating system automatically finds and installs the correct driver from the CD-ROM. Once a successful installation is reported, click **Finish**.
- 5** If the wizard asks permission to restart the computer, click **Yes**. If the wizard does not appear, restart the computer.

## **registering the network adapter**

Make sure you register your product with HP after the installation process is complete. Enter the following into the address window of your Web browser (such as Internet Explorer or Netscape):

**<http://register.hp.com>**

Then press Enter.

## connecting a phone to the adapter

Connect a telephone to the phone port of the adapter as illustrated in the cabling diagram shown previously.

**Caution:** *The phone port on the adapter does not contain a microfilter. If your Phoneline network includes a DSL connection, you must insert the microfilter that came with your DSL modem into the phone port of the adapter, then insert the telephone handset into the microfilter's phone port. Use of the microfilter prevents distortion of the telephone signal by the DSL modem.*

## accessing additional documentation

- 1 Insert the CD-ROM into the CD-ROM drive of the computer.
- 2 On the desktop, double-click **My Computer**, then double-click the **Compact Disc** icon (or navigate to the CD-ROM drive in Windows Explorer).
- 3 Double-click the **hn210p** folder.
- 4 Double-click your language selection folder (**English**).
- 5 Double-click **user's guide**.

**Note:** *Keep the CD-ROM in a safe place for future use.*



## **product and support information**

- HP Customer Care: (208) 323-2551;  
**<http://www.hp.com/cposupport>**
- Online product information and technical support: **<http://www.hp.com/go/homenetworking>**  
(includes a home networking tutorial, FAQs, and other information)