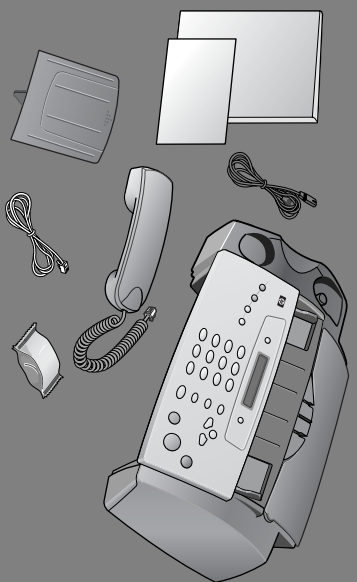


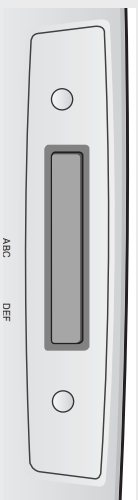
hp fax 1010 series setup poster



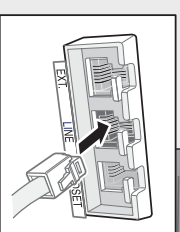
1 a Remove all shipping tape.

b

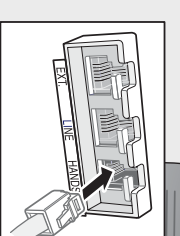
Peel off protective plastic from around LCD area and buttons.



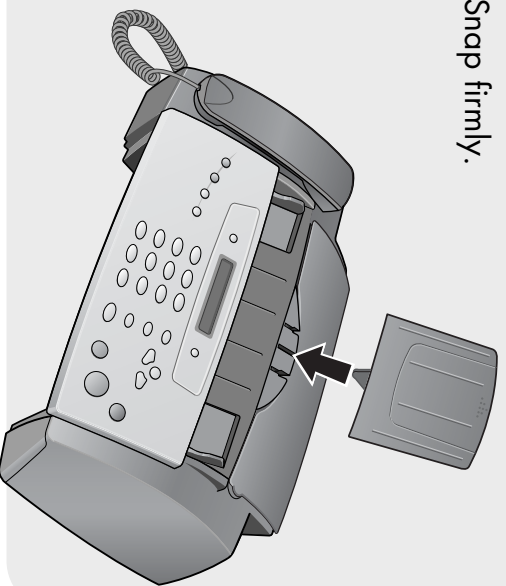
2 a



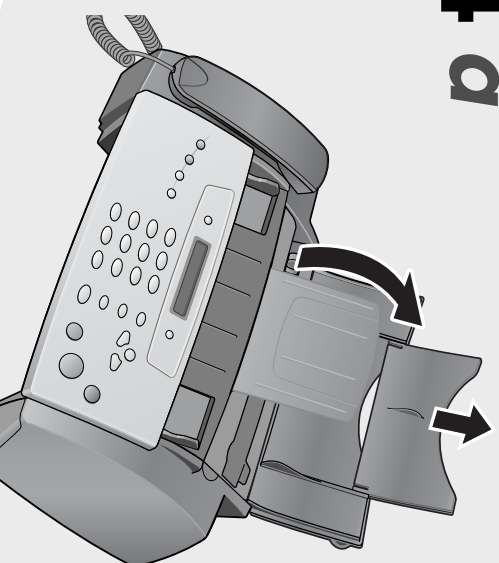
b



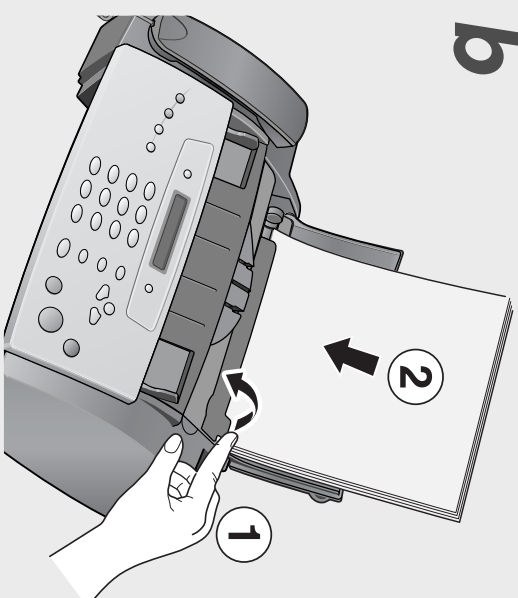
3 Snap firmly.



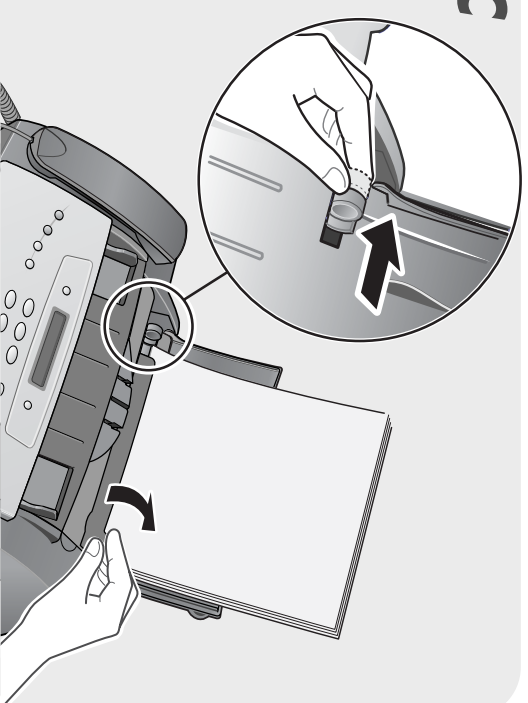
4 a



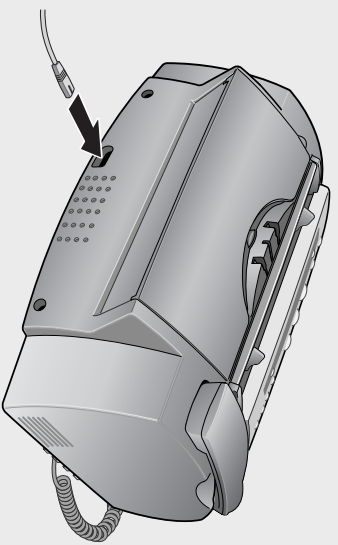
b



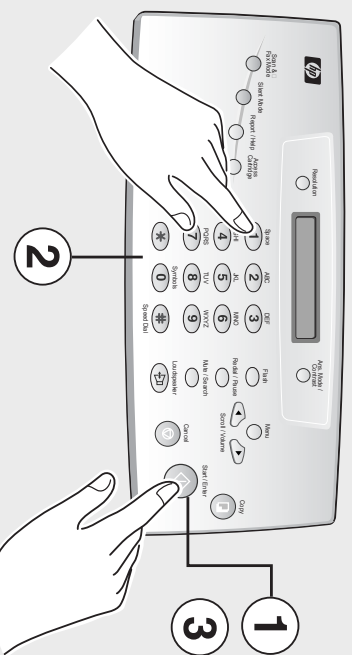
c



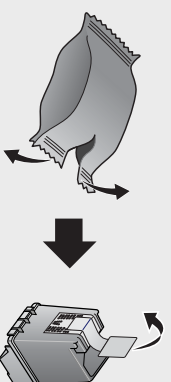
5 a



b Set date and time when prompted.



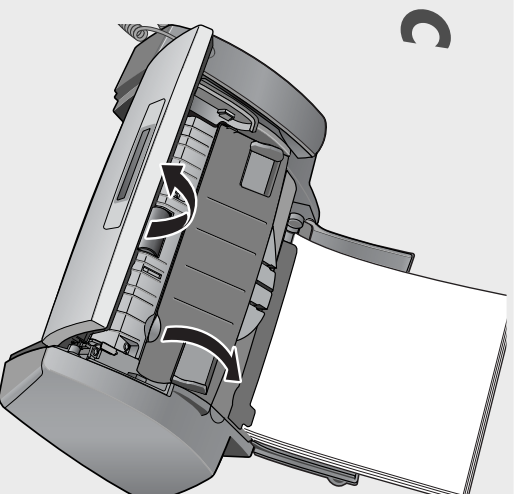
6 a



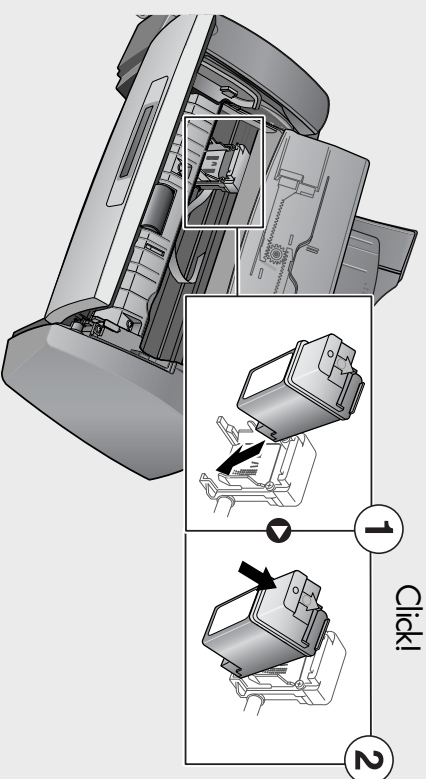
b



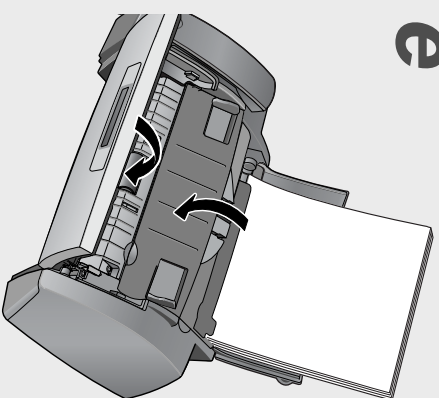
c



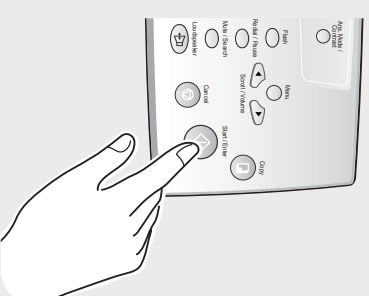
d Orient the copper area on the cartridge toward the back of the machine and click it in the carrier at a slight slant as shown.



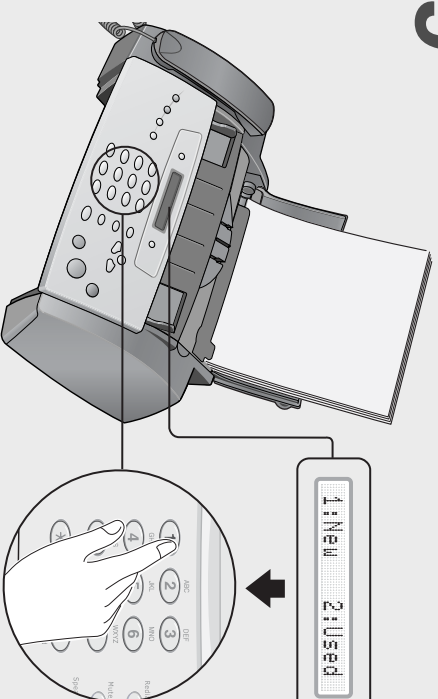
e



f



g



7 Setting the fax header (your name and fax number) is required by law in many countries.

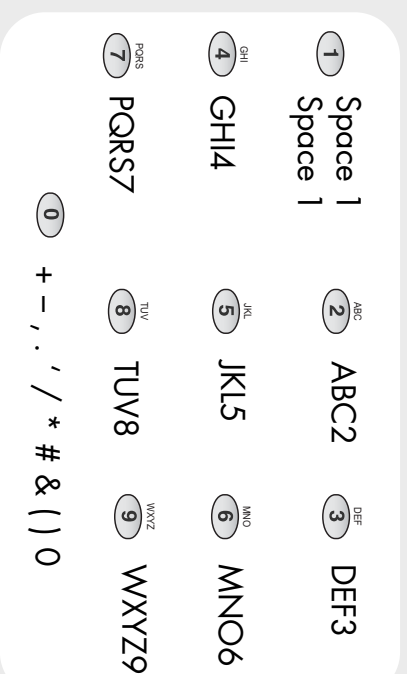
- 1 Press **Menu** repeatedly until System ID displays.
- 2 Press **Start/Enter**.
Fax Number will display.
- 3 Press **Start/Enter**.
The cursor will blink for you to enter the number. To enter punctuation in the number use the keys labelled Fax Number below.
- 4 Enter the number and press **Start/Enter**.

Fax Number



- 5 Fax Name will display.
Press **Start/Enter**.
The cursor will blink for you to enter the name. To enter punctuation or other special characters in the name, use the keys labelled Fax Name below.
- 6 Enter the name and press **Start/Enter**.

Fax Name



8

Press the **Ans.Mode/Contrast** button to set the answer mode.



- FAX Mode: To have the machine always answer as a fax.
- TEL Mode: To have the machine always answer as a telephone where you must manually receive faxes.

Go to Chapter 2 of the *Basic Guide* before selecting other Answer Modes.

9

Unless you selected TEL Mode in Step 8, review Chapter 2 of the *Basic Guide*.