

WS-R452/HP-R452/WS-P39CR
CIS RTL8139 Family PCI Fast Ethernet NIC

User Manual

© 2001 CIS Technology Inc.

Table of contents

Hardware Installation.....	3
-----------------------------------	----------

Software Installation

Windows 98.....	3
Windows Me.....	6
Windows 2000.....	8

TCP/IP Internet Settings

Windows 98/Me.....	12
Windows 2000.....	15

How to Remove Software

Windows 98/Me.....	17
Windows 2000.....	18

Hardware Installation

This section describes how to connect your PC to a LAN (local Area Network) with the PCI Ethernet NIC.

1. Turn off your computer.

NOTE: Some PCI 2.1/2.2 compliant motherboards supply power to the slots even when the PC is turned off. To prevent damage to your PC or CIS Ethernet NIC, always remove the power cord when installing or removing CIS Ethernet NIC.

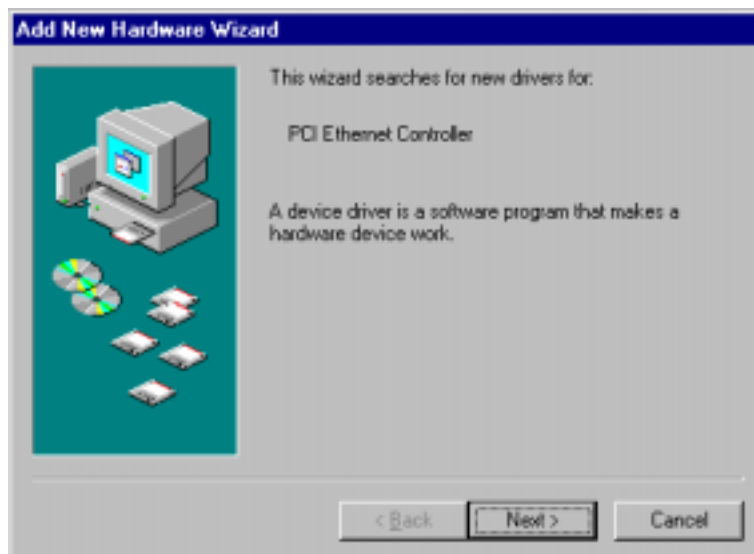
2. Insert the CIS Ethernet NIC into the empty PCI slot.
3. Connect one end of Ethernet cord to the jack on the Ethernet card, and connect another end to the Hub.
4. Connect the power cord to your computer and turn on the PC.

Software Installation

After connecting the hardware, your window system will detect the **PCI Ethernet Controller** automatically and open the *Add New Hardware Wizard* (*Windows 98/Me*) or *Found New Hardware Wizard* (*Windows 2000*).

Windows 98

1. The *Add New Hardware Wizard* will indicate that it found the PCI Ethernet NIC. Click **Next**.



2. The following Window appears. Insert the driver disc. Select **Search for the best driver for your device**, then click **Next**.



3. In the next dialog box, choose the **Specify a location** check box and enter the disk drive of the installation disc or click the **Browse** button and point to the location of the driver installation files.

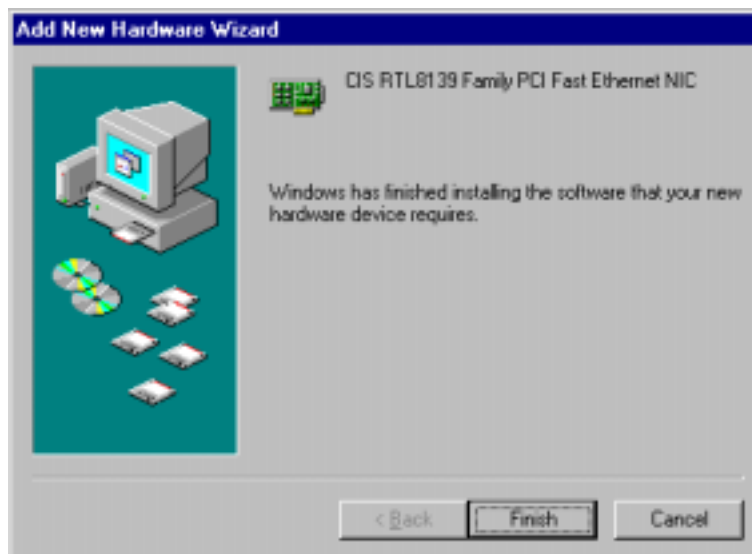
Note: The driver is located in D:\Driver\WIN98. **D:** is the device of CD.



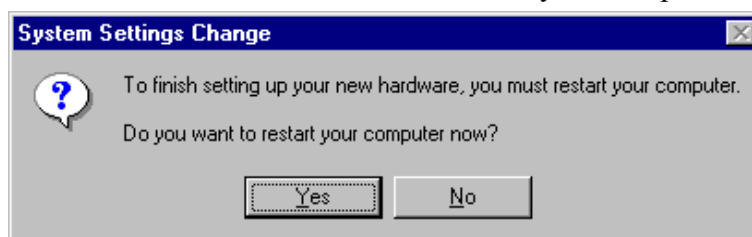
4. Click **Next**.
5. The following confirmation dialog will appear:



6. Click **Next**.
7. **WS-R452/HP-R452/WS-P39CR** driver files will now be copied. During Installation, the system may prompt you for Windows 98 CD.
8. After files have been copied, a dialog box similar to the following will appear:

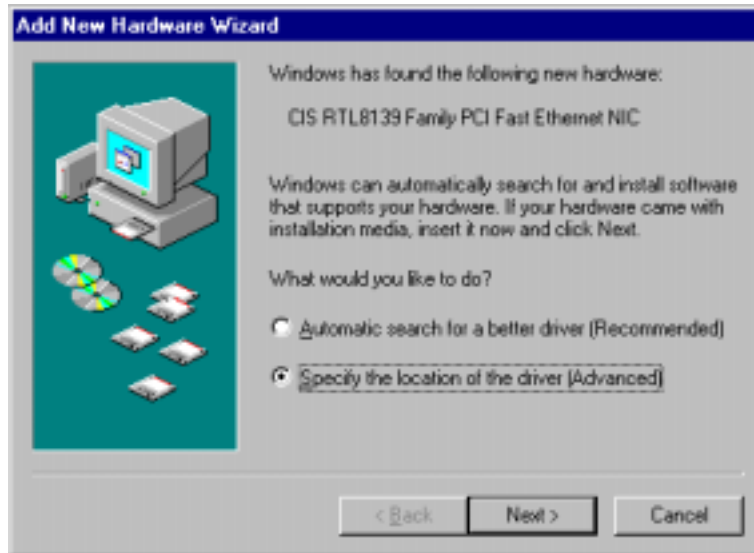


9. Click **Finish**.
10. You will be asked whether to restart your computer. Click **Yes**.



Windows Me

1. The *Add New Hardware Wizard* will indicate that it found the PCI Ethernet NIC. Insert the driver disc. Select **Specify the location of the driver**. Click **Next**.



2. In the next dialog box, choose the **Specify a location** check box and enter the disk drive of the installation disc or click the **Browse** button and point to the location of the driver installation files.

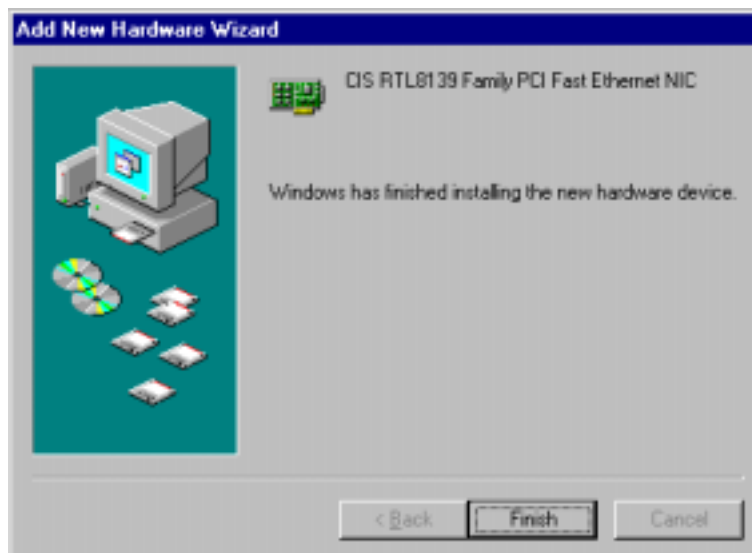
Note: The driver is located in D:\Driver\WINME. **D:** is the device of CD.



3. Click **Next** to continue.
4. The following confirmation dialog will appear, click **Next**.



5. After files have been copied, a dialog box similar to the following will appear:



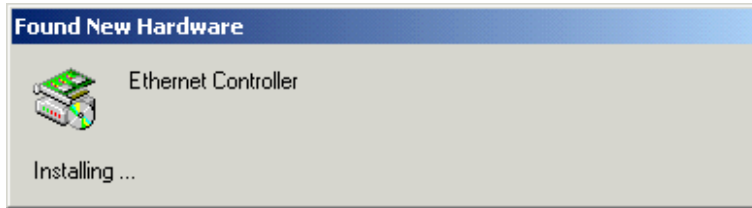
6. Click **Finish** button.

7. You will be asked whether to restart your computer. Click **Yes**.

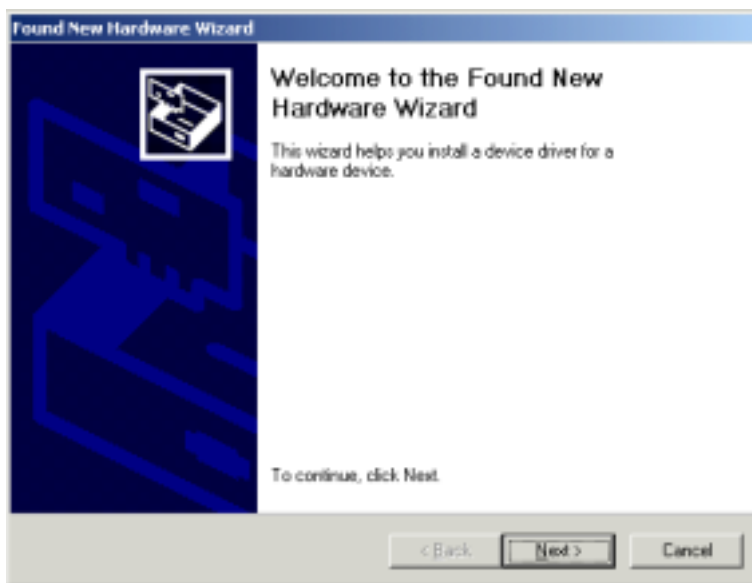


Windows 2000

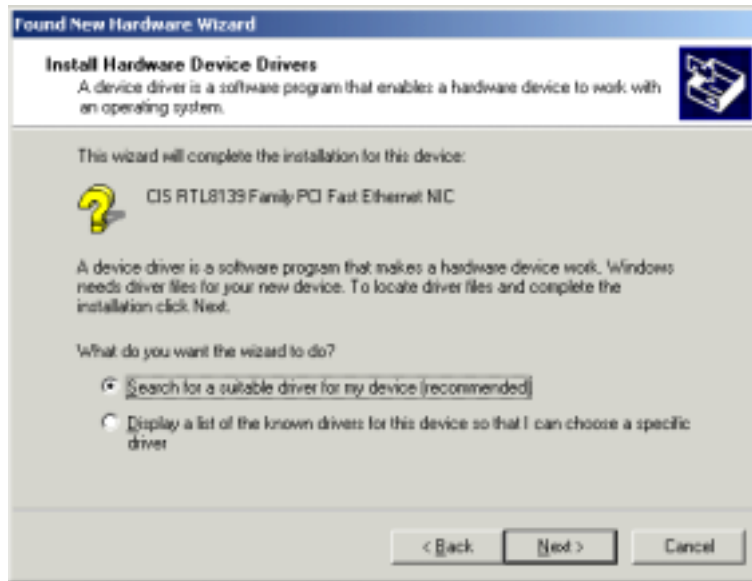
1. A *Found New Hardware Wizard* will appear when the **WS-R452/HP-R452/WS-P39CR** Ethernet Card is detected.



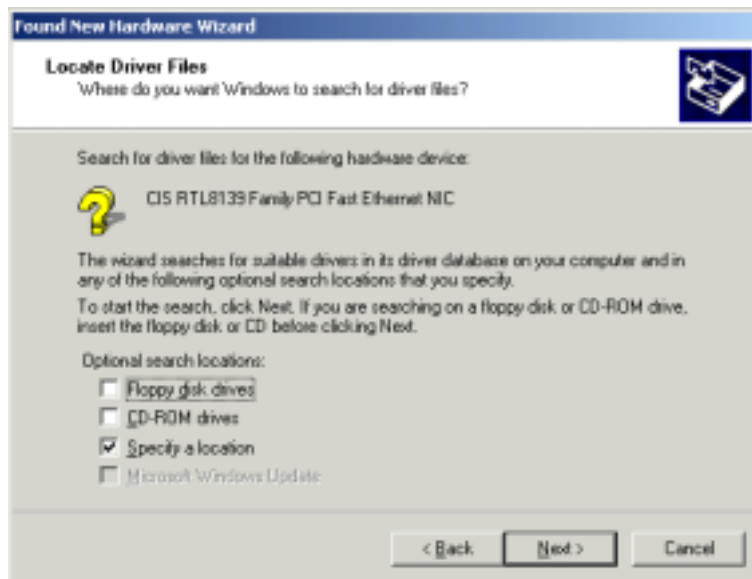
2. The welcome screen appears, Insert the **WS-R452/HP-R452/WS-P39CR** installation disk into the appropriate drive, and click **Next**..



3. Select **Search for a suitable driver for my device (recommended)** and click **Next**.



4. In the **Located Driver Files** dialog box, select **Specify a location** for searching location. Click **Next**.

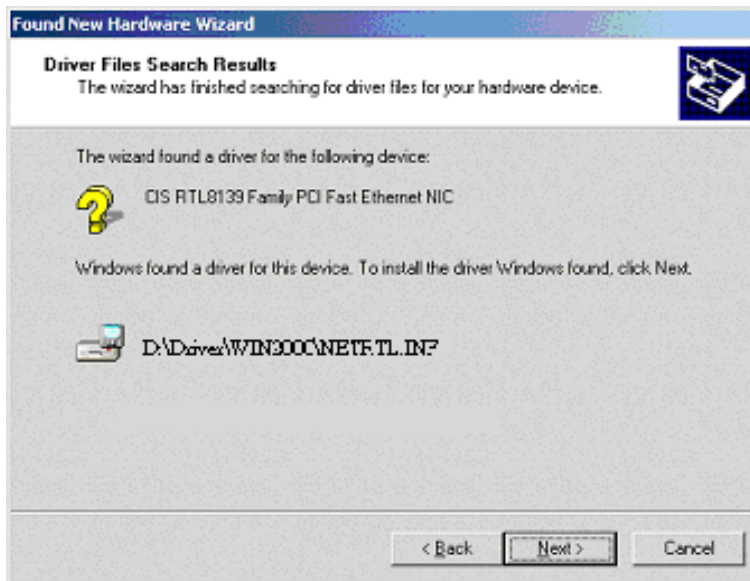


5. In the next dialog box, you can either enter the disk drive of the installation disk location or click the **Browse** button and point to the location of the driver installation files, then click the **Next** button.

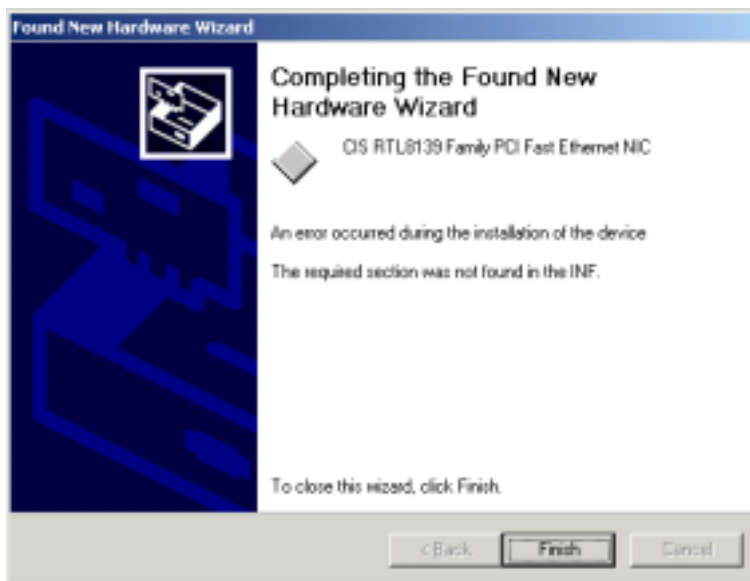
Note: The driver is located in D:\Driver\WIN2000. **D:** is the device of CD.



6. The following confirmation window will appear, click **Next**.



7. After files have been copied, a dialog box similar to the following will appear:



8. Click **Finish**.

TCP/IP Internet Settings

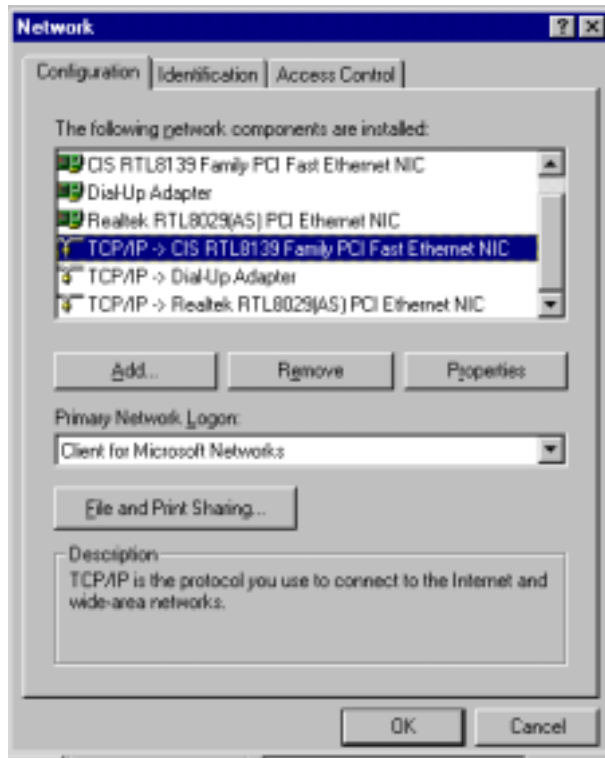
Before you do TCP/IP Internet Settings, you must have the following information list below in advance. You may ask your ISP for these information if you don't have.

- IP Address
- Subnet Mask
- DNS Server Name
- Gateway Address
- Host Name and Domain Name

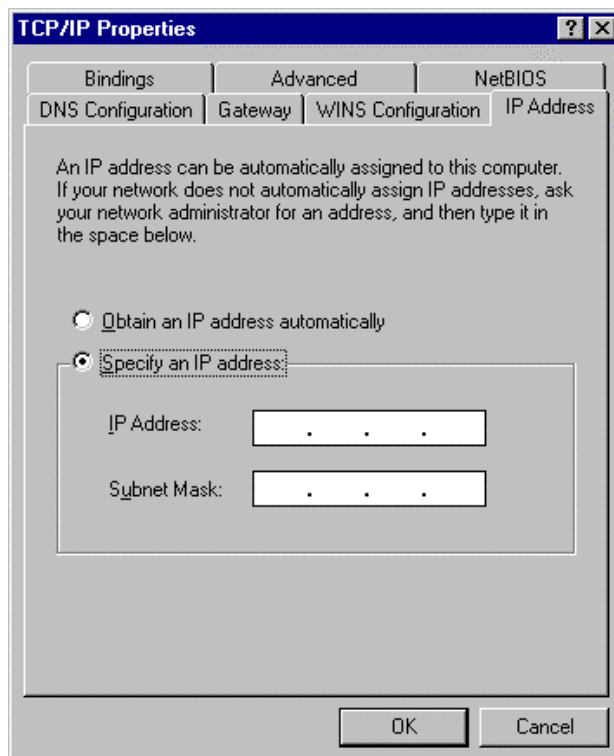
Note: You must ask your ISP whether they have a DHCP server. This user manual is only for if your ISP does not have a DHCP server.

Windows 98/Me

1. Go to Start / Settings / Control Panel.
2. In the Control Panel window, double click on **Network** icon.
3. The *Network* Window appears. Select the appropriate *TCP/IP* network component, than click on **Properties** button.



4. The *TCP/IP Properties* Window appears.

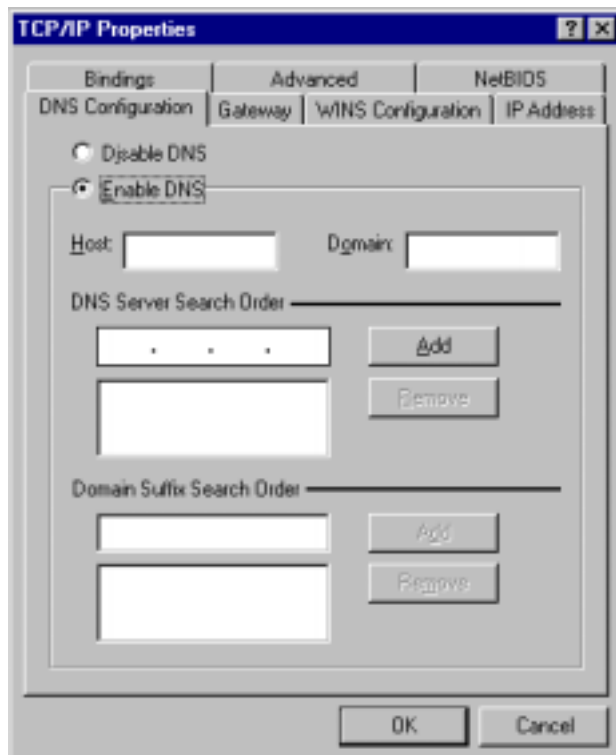


5. On the *IP Address* page, select the **Specify an IP address**. Fill in the **IP Address** and **Subnet Mask**.

6. Click on the **Gateway** tab.



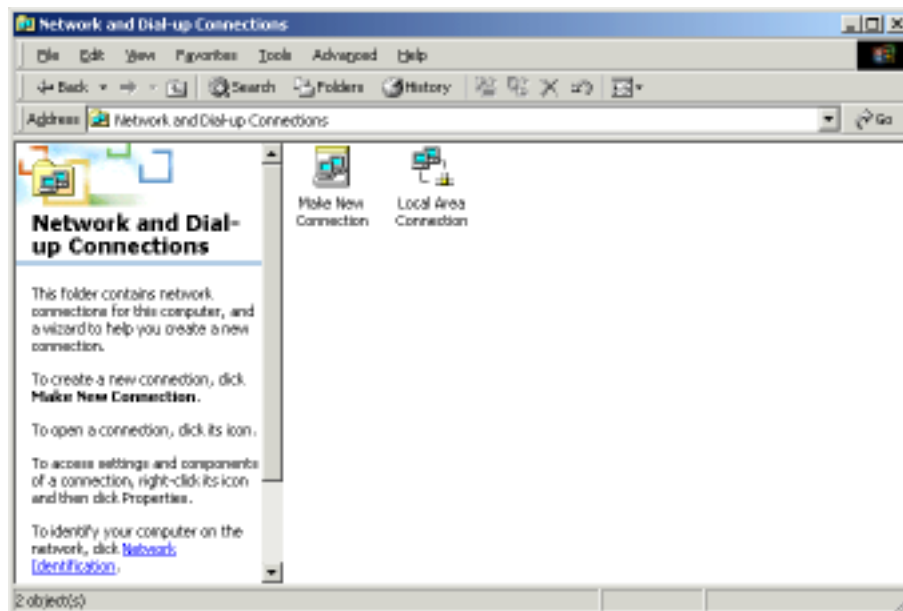
7. On the **Gateway** page, enter the ISP specified **New Gateway** address. Click **Add** button.
8. Click on the **DNS Configuration** tab.



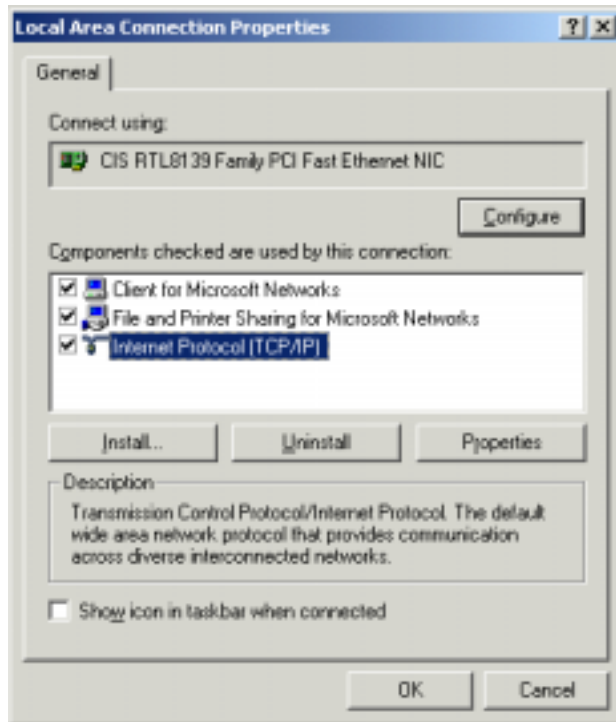
9. On the *DNS Configuration* page, select **Enable DNS** radio button. Fill in the **Host Name**. If your ISP doesn't specify it, assign a name of your choice. A Domain Name is optional.
10. Enter the ISP specified **DNS Server IP** address and click **Add** button.
11. Click **Ok**.

Windows 2000

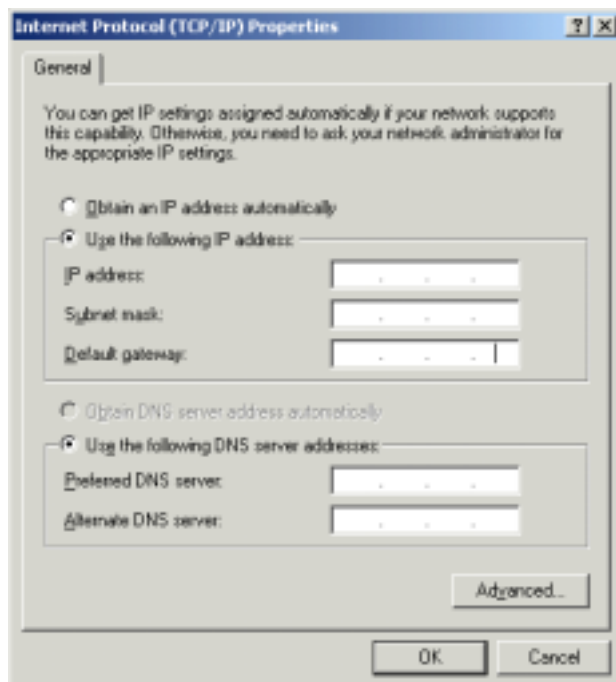
1. Go to Start / Settings / Control Panel.
2. In the Control Panel window, double click on **Network and Dial-Up Connections** icon.
3. The *Network and Dial-Up Connections* Window appears. Double click on **Local Area Connection** icon.



4. The *Local Area Connection Properties* Window appears.



5. Select **Internet Protocol (TCP/IP)**, and click **Properties** button.
6. The **Internet Protocol (TCP/IP) Properties** Window appears.



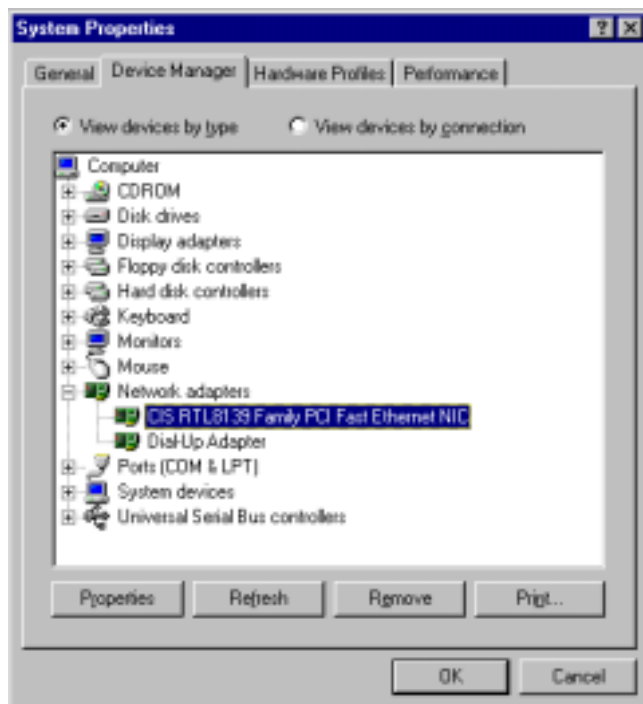
7. Select **Use the following IP address** radio button. Fill in each field as specified by your ISP.
8. Select **Use the following DNS Server address** radio button. Fill in the **Preferred DNS Server** IP address.

9. Click **OK**.

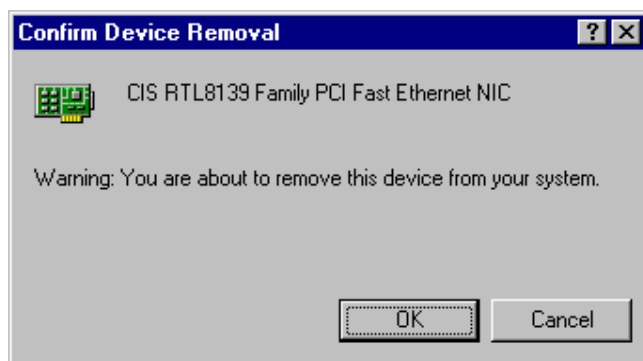
How to Remove Software

Windows 98/Me

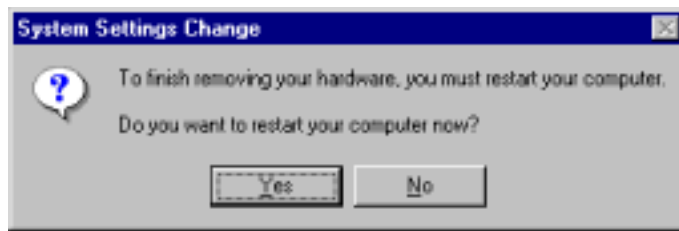
1. Go to Start / Settings / Control Panel.
2. In the Control Panel window, double click on **System** icon.
3. The **System Properties** window appears. Click on *Device Manager* tab.



4. Select **CIS RTL8139 Family PCI Fast Ethernet NIC** list from the sub-list of Network Adapters. Click **Remove** button.
5. The **Confirmation** window appears, click **OK** to remove the driver.

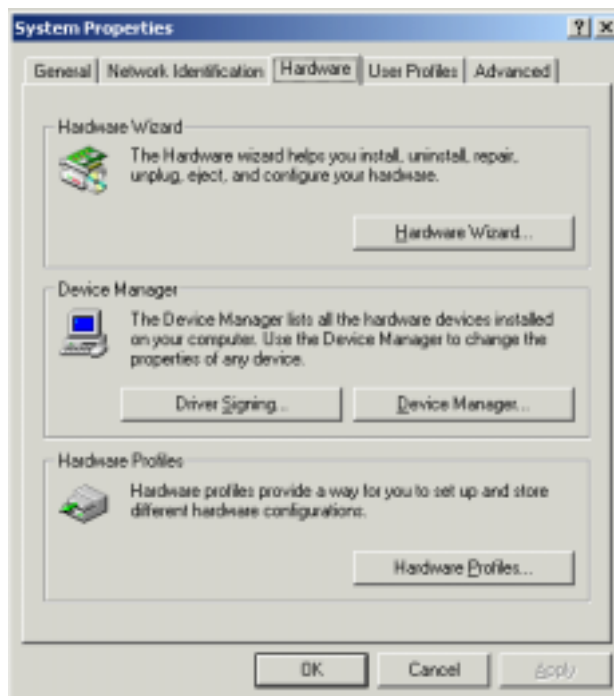


6. You are asked whether to restart your computer. Click **Yes**.

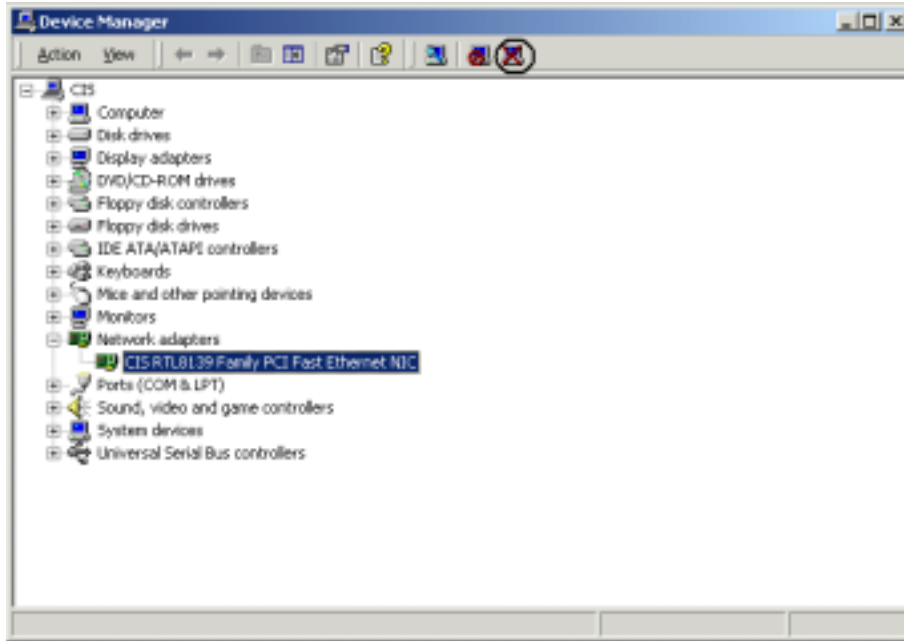


Windows 2000

1. Go to Start / Settings / Control Panel.
2. In the Control Panel window, double click on **System** icon.
3. The **System Properties** window appears. Click **Device Manager** Button.



4. The **Device Manager** window appears.



5. Select **CIS RTL8139 Family PCI Fast Ethernet NIC** list from the sub-list of Network Adapters. Click **Uninstall** fast button.
6. The **Confirmation** window appears, click **OK** to remove the driver.

