



hp media center pc



invent

**updated hp media
center pc information**

Updated HP Media Center PC Information

Please review this information and keep it with your guides. The information describes:

- Setting the location for the Media Center television program guide.
- Installing speakers.
- Understanding the 6-In-1 memory card.
- Recording data to CDs and DVDs.
- Playing recorded TV programs.
- Safeguarding your capability to play recorded TV programs.
- Using MyDVD to copy, or burn, recorded TV programs to DVD+R or DVD+RW discs.
- Switching display devices.
- Updated information about software programs.

Setting PC Location for Television Program Guide

During the initial setup of the PC, you specify your PC country/region location. Media Center uses this information to select the country/region for the television program guide.

The Media Center lists *United States* as the PC location. If this location does not match the ZIP Code or postal code location you enter in the Media Center program guide setting, you may see an error message. In addition, you may see *No data available* in the television program guide, or you may not be able to get the correct television program guide.

To resolve this problem, set the location for your PC in the Control Panel first and then in the Media Center Settings window.

To set the PC location

- 1 Click **Start** on the taskbar, and click **Control Panel**.
- 2 Click **Date, Time, Language, and Regional Options**, if it is present.
- 3 Double-click **Regional and Language Options**.
- 4 Click the **Regional Options** tab.
- 5 In the Location box near the bottom of the tab, select your country/region (for example, **Canada**) from the drop-down list.
- 6 Click **Apply**.
- 7 Click **OK**.

To change the program lineup in Media Center

- 1 Open Media Center.
- 2 In the Start menu select **Settings**.
- 3 Select **TV/DVD**.
- 4 Select **Guide Setup**.

- 5 Select **Change lineup**, and follow the onscreen instructions. When you enter your postal code, do not leave any spaces. For example, for Canadian postal code R2M 3Z4 you would enter R2M3Z4.
If you see an *Invalid* message, there is no guide for your area.

Installing Speakers

Your PC may have a sound card with connectors on the back of the PC for analog and digital audio outputs (Line out -1, Line out -2, and Line out -3), a microphone, and an audio input (Line in). The example illustration below shows a sound card that includes a FireWire® connector on the left. If your PC has a sound card with these connectors, perform the procedure "Installing Creative Audigy for speakers" on page 4 of this document.



Select PCs have the multi-channel audio capability that uses the microphone, Audio (Line) In, and Audio (Line) Out connectors on the back of the PC. If your PC has these connectors, perform the procedure “Installing multi-channel audio speakers” on page 4 of this document.

Installing Creative Audigy for speakers

After you turn on the PC for the first time and complete the initial onscreen setup, do the following so that your speakers work properly:

- 1** Close any open programs.
- 2** Click **Start** on the taskbar, choose **All Programs, Creative**, and then click **Install Application for Creative Audigy**.
- 3** The Audigy Application Setup window opens. Click **OK**.

The InstallShield Wizard begins the installation and automatically restarts the PC when the installation completes.

Note: *If you do not do this procedure, the speakers may produce an audible pop when the PC wakes from standby or hibernation.*

Installing multi-channel audio speakers

If your PC has multi-channel speakers capability (select models only), you can connect speakers for 4-channel or 6-channel output. You must connect your speaker system to the PC, and then configure the audio software for sound output.

Note: *Multi-channel audio uses the Microphone, Audio (Line) In, and Audio (Line) Out connectors on the back of the PC to connect the multi-channel speakers system to the PC.*

To connect your multi-channel speaker system to the PC

- 1** Turn off the PC.
- 2** Connect the three audio cable plugs from the speaker system to the connectors on the back of the PC (see the table).

Connect speaker channels (plugs)	To PC back connector
Front speakers	Audio (Line) Out (lime-green)
Rear speakers	Audio (Line) In (blue)
Center/subwoofer speakers	Mic-1 (pink)

- 3 Turn on the PC.
- 4 Turn on your speaker system.
- 5 Configure the multi-channel audio output; refer to the next procedure.

To configure multi-channel audio output for speakers configuration

- 1 Click **Start** on the taskbar.
- 2 Choose **All Programs**.
- 3 Choose **Multi-channel Sound Manager**, and then click **Multi-channel Sound Manager** again. The Audio Configuration window opens.

Note: *If you do not see the Speaker Configuration tab, your PC does not have the multi-channel option.*

- 4 Click the **Speaker Configuration** tab. (Your speakers must be connected to see this tab.)
- 5 Select the option describing the number of speakers in your system, for example, **6 speaker mode (for 5.1 channels)**. You can click the Speaker Test tab and then click on a speaker to test it.
- 6 Click **OK**.

Understanding the 6-In-1 Memory Card Reader

The 6-In-1 memory card reader can read from and write to six types of memory cards and to the IBM Microdrive™ disk drive.

Special note about the Safely Remove Hardware utility



Warning: *Do not click Stop in the Safely Remove Hardware window while the USB Mass Storage Device is selected. Doing so removes the operating system recognition of the 6-In-1 memory card reader from your PC. You must restart the PC to use your reader again.*



If you inadvertently open the *Safely Remove Hardware* window, click **Close**.

Understanding the in-use light

The 6-In-1 memory card reader in-use light turns on when you insert media into a slot. The light blinks when the memory card reader reads from or writes to the media.



Warning: *Do not insert or remove media when the in-use light is blinking. Doing so may cause data loss.*

Recording Data to CDs and DVDs

You can record data to blank or appendable CD-R, CD-RW, DVD+R or DVD+RW discs in different ways: open a recording program, use the Windows® XP CD Writing Wizard, or use the DLA (Drive Letter Access) program drag-and-drop method.

Important: *The DLA program is not preinstalled on your PC, but you can get it from the HP Web site; see “Installing DLA Software” on page 8 of this document.*

Recording with RecordNow

Use RecordNow to record data and music files to CDs and DVDs.

You can put data files on a DVD to store them or transfer them to another Media Center PC. However, data files on a DVD do not play in a DVD player.

Note: *To copy a recorded TV show to DVD to view on a home DVD player, see "Using MyDVD to Copy Recorded TV Programs to DVD" on page 17 of this document.*

To open RecordNow, click **Start** on the taskbar, choose **All Programs, RecordNow CD/DVD Writer**, and then click **RecordNow**. Follow the onscreen instructions.

Recording with MyDVD

Use MyDVD to record video files to CDs and DVDs. MyDVD writes files to DVD that can play in a DVD player.

To open MyDVD, click **Start** on the taskbar, choose **All Programs, Sonic MyDVD**, and then click **Start MyDVD**. Follow the onscreen instructions.

Recording with the Microsoft CD Writing Wizard

Use the CD Writing Wizard to record data or music files to CDs only. The CD Writing Wizard cannot write data to DVDs.

To copy data to a blank or appendable CD by using the CD Writing Wizard:

- 1 Copy your files to a writeable CD drive folder in My Computer by doing one of the following:
 - Dragging a file from a Windows Explorer window to the writeable CD drive icon.

Or

 - Selecting **Save As** from within certain programs, and then saving the file to the drive.

Or

 - Right-clicking a file, selecting **Send To**, and then selecting the drive.

2 When you are ready to record your files to a CD, click **Start** on the taskbar, and then click **My Computer**.

3 Double-click your writeable **CD drive** icon. The files you have copied to the drive should appear in the drive window.

Important: *The files displayed in the drive window are not recorded to the CD yet. You must complete the following steps to finish the recording process.*

4 Click **Write these files to CD** in the CD Writing Tasks section of the drive window. The CD Writing Wizard opens.

5 Type the name of the CD, and then click **Next**.

6 Insert a blank or an appendable CD.

7 Click **Next**. The files are being recorded to your CD.

8 When your files have finished recording, a message appears telling you the files have been successfully recorded. Click **Finish**.

Installing DLA Software

The DLA software is not preinstalled on your PC.

Important: *Installing the DLA program disables the CD Writing Wizard program.*

DLA allows you to use your DVD Writer/CD Writer drive as you would a diskette drive, by copying files to disc or by using a drag-and-drop method.

To get and install the DLA program:

1 Go to the Web site:

<http://www.hp.com/cposupport>

2 Type your model number into the Search box (for example, *Media Center 863n*).

3 Click **drivers and downloads** for your model. Click **applications**, if it is present.

4 Choose **DLA**, and then follow the onscreen instructions to download and install the program.

Recording with DLA

Important: *Format a blank CD or DVD before copying files directly to a CD or DVD. If you don't, a message appears telling you to format the disc or telling you that your drive is not accessible.*

- 1 Press the Eject button on the drive and insert the blank disc.
- 2 Click **Start**, and then click **My Computer**.
- 3 Right-click the **drive** icon and select **Format**.
- 4 Under Volume Label, type in the title of the disc.
- 5 Under Format type, select **Full** or **Quick (erase)**. You must select the quick format for all CD-R or DVD+R discs. You must select the full format for a CD-RW or a DVD+RW disc the first time you format it.

Note: *Full format can take up to 45 minutes. Quick format usually takes less than a minute.*
- 6 Click **Start** to format the disc.
- 7 Click **Yes** to the message that all files on the disc will be erased.

8 Click **OK**.

When the disc formatting is complete, you can copy your files directly to the disc in My Computer by:

- Dragging a file from a Windows Explorer window to your drive icon.

Or

- Selecting **Save As** from within some programs, and then saving the file to your drive.

Or

- Right-clicking a file, selecting **Send To**, and then selecting your drive.

After you record your files, if you want to read the DLA-formatted disc on most other CD-ROM drives, you must make the disc compatible: Insert your disc into your drive, right-click the **DVD Writer/CD Writer** drive icon, and then select **Make Compatible**.

The Make Compatible feature in DLA makes uncompressed CD-R and DVD+R discs readable by most read-only CD and DVD drives, even if DLA is not installed in the PC. When you make a disc compatible, DLA closes the session on your disc. This means:

- With a DVD+R, you are not able to add data to the disc.
- With a CD-R, you are able to add more data in another recording session, but you need to select **Make Compatible** again after you add the files.

Playing Recorded TV Programs

Most television broadcasters do not encrypt programs, so a recording can be played on any Media Center PC. A recording of a broadcaster-encrypted TV program, though, can be played only on the PC that recorded it. To protect your ability to play recorded TV programs, follow the instructions in “Safeguarding Your Capability

to Play Recorded TV Programs” on page 10 of this document.

Note: *To copy a recorded TV show to DVD to view on a home DVD player, see “Using MyDVD to Copy Recorded TV Programs to DVD” on page 17 of this document.*

For information on playing recorded TV programs on other devices, go to the Web site:
<http://www.hp.com/go/mediacenterpc>

Safeguarding Your Capability to Play Recorded TV Programs

When you record TV programs using Media Center, the TV program broadcaster may have an encryption code that Microsoft includes as a special code in the recorded files. This code is keyed to your PC and is required to play broadcaster-encrypted TV programs previously recorded to hard disk, copied to DVD, or copied to other media. When you perform a system recovery or replace the hard disk drive in your PC, you lose the special code.

You can safeguard your capability to play recorded TV programs by making a backup CD and using it as described in the procedures provided here. Make the backup CD now, before you need it, so that you can use the CD after you perform a system recovery, or replace the hard disk drive in your PC. If you do not have the backup CD after you perform a system recovery or replace the hard disk drive, you will not be able to play any previously recorded TV programs that are broadcaster-encrypted.

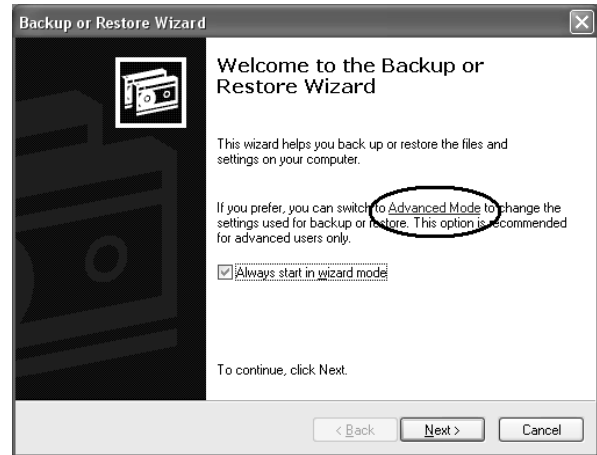
The procedures that follow describe how to prepare your PC, make the backup files you need, copy the file to CD, and use the backup CD to restore the files to your PC after a system recovery.

To prepare the code key files

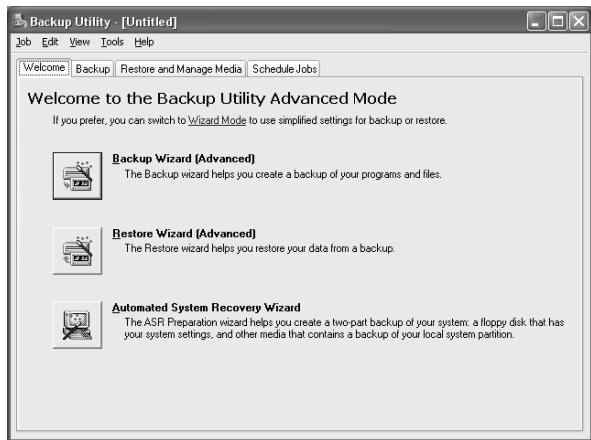
Note: *The code key files and backup CD you make can be used in your PC only.*

- 1 After you set up your PC and turn it on, complete the initial Microsoft Windows setup. Open Media Center and complete its setup.

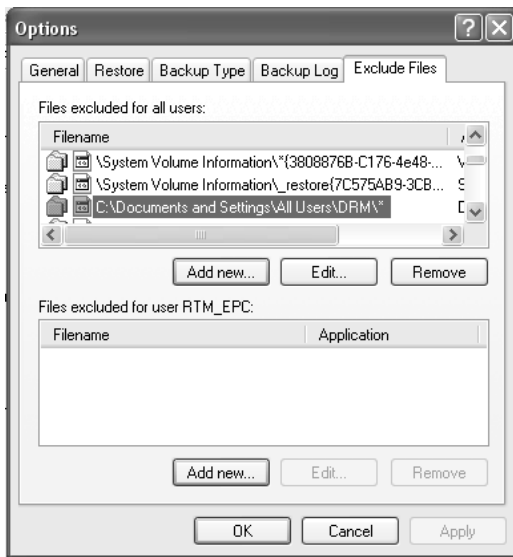
- 2 Record at least one TV program.
- 3 Close Media Center.
- 4 Open the Microsoft Backup utility: Click **Start** on the taskbar, choose **All Programs**, **Accessories**, **System Tools**, and then click **Backup**. The Backup or Restore Wizard opens.
- 5 Click the **Advanced Mode** link near the middle of the window.



- 6 At the top of the Backup Utility window that opens, click **Tools** and select **Options**.

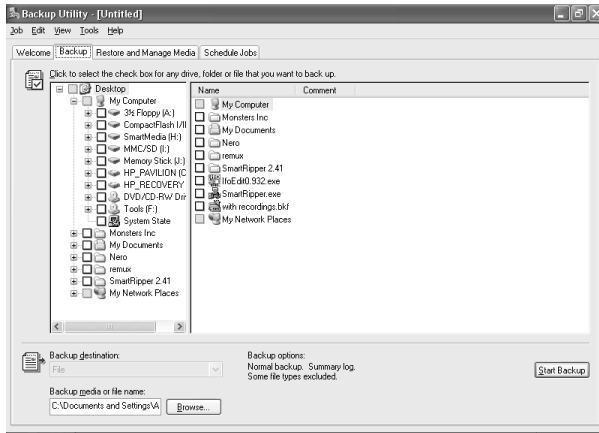


- 7 Click the **Exclude Files** tab.
- 8 In the *Files excluded for all users* box, put your cursor over the vertical line between *Filename* and *Application* in the title bar, and then click and drag the line to the right to see the full entries.

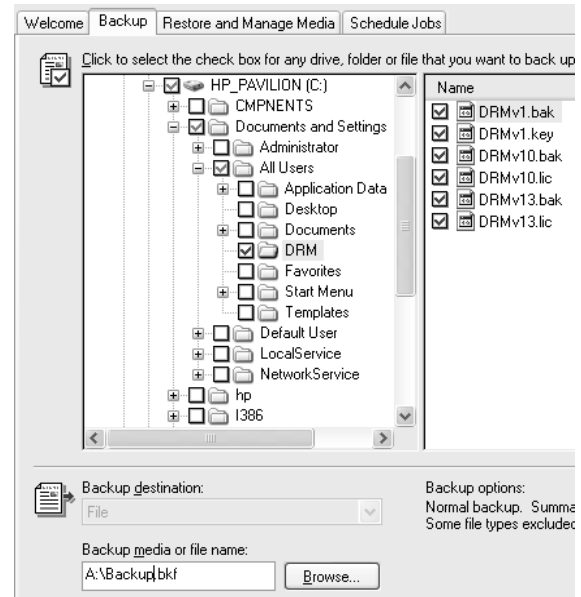


- 9 Scroll down the list to see and then click the entry: **C:\Documents and Settings\All Users\DRM***
- 10 Click **Remove**.
- 11 Click **Apply**.
- 12 Click **OK**. The Options window closes.

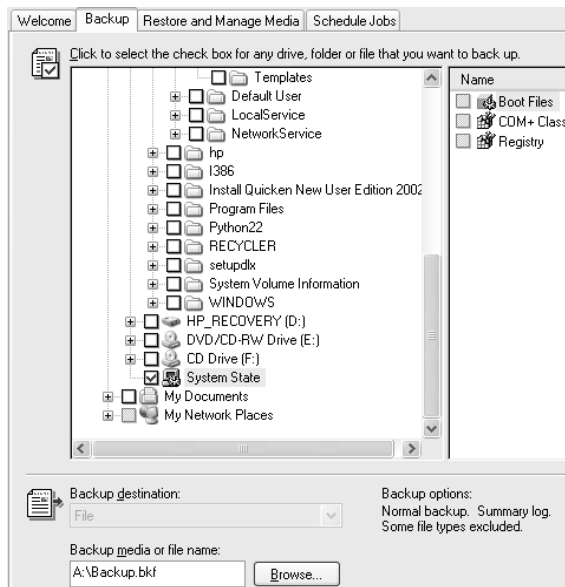
- 13** In the Backup Utility window, click the **Backup** tab.



- 14** In the left box, click the plus sign (+) for *HP Pavilion (C:)*. The file tree expands. Click the plus sign (+) for *Documents and Settings*, click the plus sign (+) for *All Users*, and then click the **DRM** box so a check mark appears (as shown in the next figure).



- 15** Scroll down the list and click the **System State** box so a check mark appears (as shown in the next figure).



- 16** At the bottom of the window, beneath *Backup media or filename*, click **Browse**. Because a diskette is too small to save the backup file on,

you will need to save the file to the desktop portion of the hard disk drive before writing the file to CD. If the message *Insert a disk into drive A* appears, click **Cancel**.

- 17** The *Save as* window opens. In the *Save in* box, select **Desktop** from the drop-down list. In the *Save as* box, use the default name or type in a file name with the extension .bkf and then click **Save**. The window closes.
- 18** Click **Start Backup** in the Backup Utility window. The Backup Job Information window opens.
- 19** Click **Start Backup**. The Backup Progress window opens. When the process finishes, the window displays *The backup is complete*.
- 20** Click **Close**.
- 21** Click the **x** in the upper corner of the Backup Utility window to close it.

Continue with the next procedure.

To make the backup CD

- 1 Click **Start** on the taskbar, choose **All Programs, RecordNow**, and then click **RecordNow** again. The RecordNow window opens.
- 2 Click **Make a Data Disc**.
- 3 Insert a blank CD.
- 4 Click **Next**.
- 5 Click **Add Files and Folders**. The *Select files and folders to add* window opens.
- 6 In the *Look in* box, select **Desktop** from the drop-down list.
- 7 Click the file name so it appears in the *File name* box. Click **Add**. The window closes.
- 8 On the RecordNow window, click **Next**. If a warning window opens, click **OK**.
- 9 Wait while the program writes to the CD and the disc tray ejects.

- 10 Remove the CD, label it, and store it in a safe place for use with the next procedure. Click **Done**.
- 11 Click the **x** in the upper corner of the RecordNow window to close it.
- 12 Because you do not need the backup file you created, drag the file to the Recycle Bin on the desktop. This deletes the copy of the file that was on the hard disk drive.

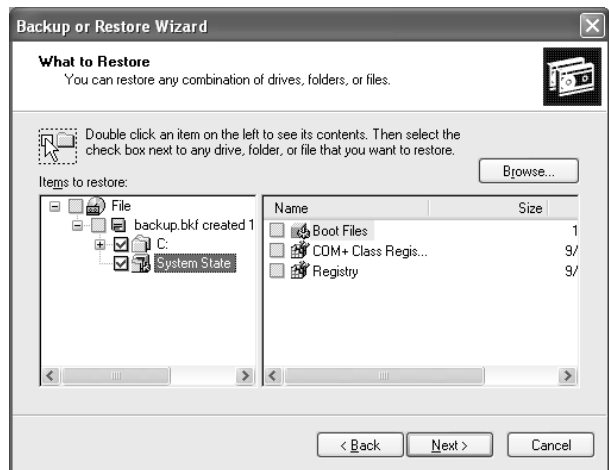
To use the code key backup CD after system recovery

Important: *After performing a system recovery procedure, use the CD you made to restore the backup code key files before using Media Center to record TV programs.*



Warning: *You must perform this procedure before recording TV. If you open Media Center and use it to record TV programs before completing this procedure, you cannot play those TV programs after you complete this procedure.*

- 1 Insert the backup CD you made into a drive. The drive window opens and shows the disc contents.
- 2 Double-click the backup file name. The Backup or Restore Wizard opens.
- 3 Click **Next**.
- 4 Choose **Restore files and settings**, and then click **Next**.
- 5 The *What to restore* window opens. Click **Browse**, and the browse window shows the A drive. Click **Browse** again, and the window shows *Select file to catalog*. Click the drop-down menu arrow and click the optical drive with the backup CD. Click the backup file name. Click **Open** and then click **OK**.
- 6 In the *Items to restore* box, click the plus sign (+) for the backup file name. The file tree expands. Click the **C:** box so a check mark appears. Click the **System State** box so a check mark appears. (The next figure shows the boxes checked.)



- 7 Click **Next**.
- 8 The Backup or Restore Wizard window shows the message *You have created the following restore settings*. In the window, click the **Advanced** button. Click **Next**.
- 9 A warning message window opens. Click **OK** in the Warning window.

- 10** Select **Replace existing file** and then click **Next**. Click **Next** again. Click **Finish**. The Restore Progress window opens.
- 11** Wait until the process completes, and then click **Close** in the Restore Progress window.
- 12** A Backup Utility message window opens. Click **Yes** to restart the PC. Wait until the restart completes.

Open Media Center and complete the setup. You can now play previously recorded TV programs that are broadcaster-encrypted.

Using MyDVD to Copy Recorded TV Programs to DVD

You can use MyDVD to write your recorded TV shows to DVD for viewing and playing in a home DVD player.

Your MyDVD program has an icon called Get Recorded TV Shows.

When you click this icon, the Shared Documents folder on the hard disk drive (C drive) opens and lists your recorded TV shows by name.



The recording quality determines the size of the file created for the recorded program. *Best* is the pre-set recording quality setting. A two-hour program recorded at *Best* quality produces a large file that will not fit on one DVD. The following table lists the recording quality and the estimated number of minutes that fit onto one DVD.

Recording quality	Minutes on one DVD (est.)
Best	80
Better	95
Good	110
Fair	190

The MyDVD program shows you the available DVD space.



This informs you when you've selected too many shows (or the required space is too large) to go onto the DVD. In this case, use the MyDVD program to "tip and tale" trim the file, creating two smaller files to store onto two independent DVDs.

You cannot change the recording quality of a program after it is recorded.

To change the Recording Quality setting:

- 1** In the Media Center Start menu, select **Settings**.
- 2** Select **TV/DVD**.
- 3** Select **Recorder**.
- 4** Select **Defaults**.

- 5** Use the arrow buttons to select the Quality option, and then press **OK** on the remote control to change the setting until *Good* is selected. Select **OK** in the window and then press **OK** on the remote control again to enter the change.
- 6** Press the **Back** button on the remote control to return to the main Settings menu.

Switching Display Devices

When you connect more than one display device (CRT monitor, flat panel monitor, TV, etc.) to the PC, you can quickly change where the PC desktop appears by pressing Alt+F5. Each time you press the Alt+F5 key combination, the PC display appears on the next device.

If Alt+F5 does not work, restart the PC and try again.

Updated Information about Software Programs

The following information updates software program information in your *Hardware Guide*.

- **InterVideo WinDVD** lets you watch DVD movies and video using an interactive menu.
- **www.myhpclub.com** is a special Web site for HP Pavilion home PC owners, including owners of Media Center PC. You will find fun projects, important product notices, support updates, tips, and special offers from HP; just press the HP button on the keyboard or enter the address in your Internet Web browser.
- **GameChannel** is a Web site where you can play cool 3-D games from WildTangent. It provides the best online gaming experience available today, and the games are updated all the time.
- **Quicken 2003 New User Edition** is a program for new users that is available on your PC. Start organizing your finances with Quicken: Balance your checkbook quickly, pay bills easily, track spending, and save time!



5 9 9 0 - 5 2 4 0