



hp media center pc



invent

**updated hp media
center pc information**

The information in this document is subject to change without notice.

Hewlett-Packard® Company makes no warranty of any kind with regard to this material, including, but not limited to, the implied warranties of merchantability and fitness for a particular purpose.

HP shall not be liable for errors contained herein or for incidental or consequential damages in connection with the furnishing, performance, or use of this material. THE WARRANTY TERMS CONTAINED IN THIS STATEMENT, EXCEPT TO THE EXTENT LAWFULLY PERMITTED, DO NOT EXCLUDE, RESTRICT OR MODIFY AND ARE IN ADDITION TO ANY MANDATORY STATUTORY RIGHTS APPLICABLE TO THE SALE OF THIS PRODUCT OR SERVICE TO YOU.

HP assumes no responsibility for the use or reliability of its software on equipment that is not furnished by HP.

This document contains proprietary information that is protected by copyright. All rights are reserved. No part of this document may be photocopied, reproduced, or translated to another language without the prior written consent of HP.

Hewlett-Packard Company
Home Products Division
P.O. Box 4010
Cupertino, CA 95015-4010
USA

© 2003 Hewlett-Packard Development Company, L.P.
All rights reserved.

Hewlett-Packard is a registered trademark of Hewlett-Packard Company in the United States of America and other countries/regions.

Other brand or product names are trademarks of their respective holders.

Contents

Updated HP Media Center PC

Information 1

Setting PC Location for Television Program Guide	2
Changing the Program Lineup in Media Center	3
Setting Parental Controls	3
Setting Closed Captioning	4
Installing Speakers	4
Connecting Altec Lansing Speakers	4
About Installing 5.1 Speakers	5
Installing Multi-channel Audio Speakers	5
Understanding the 6-In-1 Memory Card Reader	8
Recording Data to CDs and DVDs	9
Recording with RecordNow	9
Recording with MyDVD	9
Recording with the CD Writing Wizard	10
Installing DLA Software	11

Playing Video CD Slideshows	13
Playing Recorded TV Programs	13
Safeguarding Your Recorded TV Programs	13
Copying Recorded TV Programs to DVD	21
Standby Mode and Scheduled Recordings	22
Switching Display Devices	23
Updated Information about Software Programs	23
Capturing Analog Home Video	24
Using Application Recovery and System Recovery	29
Creating Recovery CDs/DVDs	32
Using HP PC Recovery CD-DVD Creator	34
Using HP Recovery Tools CD	35
System Restore	36
Application Recovery	37
System Recovery	38
System Recovery Using Recovery Discs	40

Updated HP Media Center PC Information

This document contains updated information about your Media Center PC. Please review this information and keep it with your hardware and software guides. The information describes:

- Setting PC location for television program guide
- Changing the program lineup in Media Center
- Setting parental controls
- Setting closed captioning
- Installing speakers
- Understanding the 6-In-1 memory card reader
- Recording data to CDs and DVDs
- Playing video CD slideshows
- Playing recorded TV programs
- Copying recorded TV programs to DVD
- Standby mode and scheduled recordings
- Switching display devices
- Updated information about software programs
- Capturing analog home video
- Using Application Recovery and System Recovery

Setting PC Location for Television Program Guide

During the initial setup of the PC, you specify your PC country/region location. Media Center uses this information to select the country/region for the television program guide.

Important: *Make sure the PC has a connection to the Internet and that you have completed the Media Center Setup Wizard before you try to download your television program guide.*

The Media Center program lists *United States* as the PC location by default. If you did not select your correct location and if this location does not match the ZIP Code or postal code location you entered in the Media Center program guide setting, an error message may appear. You may also see *No data available* in the television program guide, or you may not be able to get the correct television program guide.

To resolve this problem, set the location for your PC in the Control Panel first and then in the Media Center Settings window.

To set the PC location

- 1 Click **Start** on the taskbar, and then click **Control Panel**.
- 2 Click **Date, Time, Language, and Regional Options**.
- 3 Click **Regional and Language Options**.
- 4 Click the **Regional Options** tab.
- 5 In the Location box near the bottom of the tab, select your country/region (for example, **Canada**) from the drop-down list.
- 6 Click **Apply**, and then click **OK**.

Changing the Program Lineup in Media Center

Important: *Make sure you are connected to the Internet before you try to download the Electronic Program Guide or before you change the settings of the Guide in Media Center.*

- 1 Click **Start**, and then click **Media Center**.
- 2 In the Media Center Start menu, click **Settings**.
- 3 Click **TV/DVD**.
- 4 Click **Guide setup**.
- 5 Click **Change lineup**, and follow the onscreen instructions. When you enter your postal code, do not leave any spaces. For example, for Canadian postal code R2M 3Z4 you would enter R2M3Z4.

If you see an *Invalid* message, there is no guide for your area.

Setting Parental Controls

If you set Media Center to block unrated channels, an error could occur. It is recommended that you make sure this option is not selected.

To do this:

- 1 Click **Start** and then click **Media Center**.
- 2 Click **Settings, TV/DVD**, and then click **Parental control**.
- 3 Enter your PIN number.
- 4 Select **TV Ratings**.
- 5 Make sure that **Block unrated TV programs** is not selected.
- 6 If desired, you can select the **Maximum allowed TV rating** setting, select a rating, and then click **OK**. Selecting this setting does not cause an error.

Setting Closed Captioning

If you set Media Center to display closed captions while in window mode (not full-screen mode), the window or the closed-caption text may flash as the text scrolls in the window. To fix this problem, change the display to full-screen mode or turn off the closed-captioning option.

To turn off the closed-captioning option:

- 1 Click **Start** and then click **Media Center**.
- 2 Click **Settings** and then click **Audio**.
- 3 Click plus sign (+) to disable Caption display.

Installing Speakers

Connecting Altec Lansing Speakers

If your PC model came with the Altec Lansing® Speakers System Model 251, use the following procedure to connect the speakers to a Sound

Blaster Audigy Audio Card on the back of the PC. Also, refer to the setup information that came with your PC and your speaker system.

Note: *If your PC uses an integrated 5.1 audio solution (no audio card), refer to the section titled "Installing multi-channel audio speakers" and disregard this notice.*

Your speaker system has a yellow plug that does not match the color of the corresponding connector on the back of the PC.

- 1 Plug this yellow tip of the subwoofer cable into the orange audio card connector on the back of your PC.
- 2 Plug the other two tips of the audio cable into their matching color-coded connectors on the back of the PC.
- 3 Follow the speaker system documentation to connect the other speakers to the subwoofer.

About Installing 5.1 Speakers

Your PC may have a sound card with connectors on the back of the PC for analog and digital audio outputs (Line out -1, Line out -2, and Line out -3), a microphone, and an audio input (Line in). The example illustration below shows a sound card that includes a game port connector on the left. If your PC has a sound card with these connectors, perform the procedures in the next section.



Some PCs have the multi-channel audio capability that uses the microphone, Audio (Line) In, and Audio (Line) Out connectors on the back of the PC. If your PC has these connectors, you can connect and install a multi-channel audio speaker system. To do this, follow the procedures in the next section.

Installing Multi-channel Audio Speakers

If your PC has multi-channel speakers capability (select models only), you can connect speakers for 4-channel or 6-channel output. You must connect your speaker system to the PC, and then configure the audio software for sound output. Your PC may include the Multi-channel Sound Manager or the Creative SoundBlaster Audigy sound manager. Refer to the correct procedure to configure your multi-channel speakers.

Note: *Multi-channel audio uses the Microphone, Audio (Line) In, and Audio (Line) Out connectors on the back of the PC to connect the multi-channel speakers system to the PC.*

To connect your multi-channel speaker system to the PC

- 1 Turn off the PC.
- 2 Connect the three audio cable plugs from the speaker system to the connectors on the back of the PC (see the table).

Connect speaker channels (plugs)	To PC back connector
Front speakers	Audio (Line) Out (lime-green)
Rear speakers	Audio (Line) In (blue)
Center/subwoofer speakers	Mic-1 (pink)

- 3 Turn on the PC.
- 4 Turn on your speaker system.
- 5 Configure the multi-channel audio output; refer to the next procedure.

To configure multi-channel audio output for PCs with Multi-channel Sound Manager

- 1 Click **Start** on the taskbar.
- 2 Choose **All Programs**.
- 3 Choose **Multi-channel Sound Manager**, and then click **Multi-channel Sound Manager** again. The Multi-channel Audio Configuration window opens.
Note: *If you do not see the Speaker Configuration tab, your PC may not have the multi-channel option.*
- 4 Click the **Speaker Configuration** tab. (Your speakers may need to be plugged in to see this tab.)
- 5 Select the option describing the number of speakers in your system, for example, **6/5.1 speaker mode**. You can click the Speaker Test tab and then click each speaker to test it.
- 6 Click **OK**.

To configure multi-channel audio output for PCs with Creative SoundBlaster Audigy

- 1 Click **Start** on the taskbar.
- 2 Choose **All Programs**.
- 3 Choose **Creative, Sound Blaster Audigy**, and then click **Creative AudioHQ**.
- 4 Double-click the **Speaker** icon.
- 5 Click the drop-down menu and then select **5.1 speakers**. You can click the **Test** button to test it. If you don't hear sound during the test, check each speaker connection and then check the volume controls.

To configure multi-channel audio output for Media Center

Note: You need to perform this procedure if you have Creative SoundBlaster Audigy sound manager or the Multi-channel Sound Manager.

- 1 Click **Start** on the taskbar and then select **Media Center**.
- 2 Click **Settings, TV/DVD**, and then click **DVD**.
- 3 Click **Audio**.
- 4 Select **6 speaker mode (5.1 channel)**.
- 5 Click **Apply**, and then click **OK**.

Understanding the 6-In-1 Memory Card Reader

The 6-In-1 memory card reader can read from and write to six types of memory cards and to the IBM Microdrive™ disk drive.

Special note about the Safely Remove Hardware utility



Warning: *Do not click Stop in the Safely Remove Hardware window while the USB Mass Storage Device is selected. Doing so removes the operating system recognition of the 6-In-1 memory card reader from your PC. You must restart the PC to use your reader again.*



If you inadvertently open the *Safely Remove Hardware* window, click **Close**.

Understanding the in-use light

The 6-In-1 memory card reader in-use light turns on when you insert media into a slot. The light blinks when the memory card reader reads from or writes to the media.



Warning: *Do not insert or remove media when the in-use light is blinking. Doing so may cause data loss.*

Recording Data to CDs and DVDs

You can record data to blank or appendable CD-R, CD-RW, DVD+R or DVD+RW discs in different ways: Open a recording program, use the CD Writing Wizard, or use the DLA (Drive Letter Access) program drag-and-drop method.

Important: *The DLA program is not preinstalled on your PC, but you can get it from the HP Web site; see "Installing DLA Software" in this document.*

Recording with RecordNow

Use RecordNow to record data and music files to CDs and DVDs.

You can put data files on a DVD to store them or transfer them to another PC. However, data files on a DVD do not play in a DVD player.

Note: *To copy a recorded TV show to DVD to view on a home DVD player, see "Copying Recorded TV Programs to DVD."*

To open RecordNow, click **Start** on the taskbar, choose **All Programs, RecordNow**, and then click **RecordNow**. Follow the onscreen instructions.

Recording with MyDVD

Use Sonic MyDVD to record video files to CDs and DVDs. MyDVD writes files to DVD that can play in a DVD player.

To open MyDVD, click **Start** on the taskbar, choose **All Programs, Sonic, MyDVD**, and then click **Start MyDVD**. Follow the onscreen instructions.

Recording with the CD Writing Wizard

Use the Microsoft CD Writing Wizard to record data or music files to CDs only. The CD Writing Wizard cannot write data to DVDs.

To copy data to a blank or appendable CD by using the CD Writing Wizard:

- 1 Copy your files to a writeable CD drive in My Computer by doing one of the following:
 - Dragging a file from a Windows Explorer window to the writeable CD drive icon.
Or
 - Selecting **Save As** from within certain programs, and then saving the file to the drive.
Or
 - Right-clicking a file, selecting **Send To**, and then selecting the drive.

- 2 When you are ready to record your files to a CD, click **Start** on the taskbar, and then click **My Computer**.
- 3 Double-click your writeable **CD drive** icon. The files you have copied to the drive should appear in the drive window.

Important: *The files displayed in the drive window are not recorded to the CD yet. You must complete the following steps to finish the recording process.*

- 4 Insert a blank or an appendable CD.
- 5 Click **Write these files to CD** in the CD Writing Tasks section of the drive window. The CD Writing Wizard opens.
- 6 Type the name of the CD, and then click **Next**.
- 7 Click **Next**. The files are being recorded to your CD.
- 8 When your files have finished recording, a message appears telling you the files have been successfully recorded. Click **Finish**.

Installing DLA Software

The DLA software is not preinstalled on your PC.

Important: *Installing the DLA program disables the CD Writing Wizard program.*

DLA allows you to use your DVD Writer/CD Writer drive as you would a diskette drive, by copying files to disc or by using a drag-and-drop method.

To get and install the DLA program:

- 1 Go to the Web site:
<http://www.hp.com/cposupport>
- 2 Type your model number into the Search box (for example, *Media Center 863n*).
- 3 Click **drivers and downloads** for your model. Click **applications**, if it is present.
- 4 Choose **DLA**, and then follow the onscreen instructions to download and install the program.

Recording with DLA

Important: *Format a blank CD or DVD before copying files directly to a CD or DVD. If you don't, a message appears telling you to format the disc or telling you that your drive is not accessible.*

- 1 Press the Eject button on the drive and insert the blank disc.
- 2 Click **Start**, and then click **My Computer**.
- 3 Right-click the **drive** icon and select **Format**.
- 4 Under Volume Label, type in the title of the disc.
- 5 Under Format type, select **Full** or **Quick (erase)**. You must select the quick format for all CD-R or DVD+R discs. You must select the full format for a CD-RW or a DVD+RW disc the first time you format it.

Note: *Full format can take up to 45 minutes. Quick format usually takes less than a minute.*

- 6 Click **Start** to format the disc.
- 7 Click **Yes** to the message that all files on the disc will be erased.
- 8 Click **OK**.

When the disc formatting is complete, you can copy your files directly to the disc in My Computer by:

- Dragging a file from a Windows Explorer window to your drive icon.

Or

- Selecting **Save As** from within some programs, and then saving the file to your drive.

Or

- Right-clicking a file, selecting **Send To**, and then selecting your drive.

After you record your files, if you want to read the DLA-formatted disc on most other CD-ROM drives, you must make the disc compatible: Insert your disc into your drive, right-click the **DVD Writer/CD Writer** drive icon, and then select **Make Compatible**.

The Make Compatible feature in DLA makes uncompressed CD-R and DVD+R discs readable by most read-only CD and DVD drives, even if DLA is not installed in the PC. When you make a disc compatible, DLA closes the session on your disc. This means:

- With a DVD+R, you are not able to add data to the disc.
- With a CD-R, you are able to add more data in another recording session, but you need to select **Make Compatible** again after you add the files.

Playing Video CD Slideshows

Slideshows that are recorded onto video CDs (VCDs) cannot be played in Windows Media Center. You can play them in the InterVideo WinDVD program.

Windows Media Center can play your recorded DVDs and VCDs that don't have slideshows.

Playing Recorded TV Programs

Most television broadcasters do not encrypt programs, so a recording can be played on any Media Center PC. A recording of a broadcaster-encrypted TV program, though, can be played only on the PC that recorded it. To protect your ability to play recorded TV programs, follow the instructions in "Safeguarding Your Recorded TV Programs" in this document.

Note: *To copy a recorded TV show to DVD to view on a home DVD player, see "Copying Recorded TV Programs to DVD."*

For information on playing recorded TV programs on other devices, go to the Web site: <http://www.hp.com/go/mediacenterpc>

Safeguarding Your Recorded TV Programs

When you record TV programs using Media Center, the TV program broadcaster may have an encryption code that Microsoft includes as a special code in the recorded files. This code is keyed to your PC and is required to play broadcaster-encrypted TV programs previously recorded to your hard disk drive, copied to DVD, or copied to other media. When you perform a system recovery or replace the hard disk drive in your PC, you lose the special code.

You can safeguard your capability to play recorded TV programs by making a backup CD and using it as described in the procedures provided here. Make the backup CD now, before you need it, so that you can use the CD after you perform a system recovery, or replace the hard disk drive in your PC. If you do not have the backup CD after you perform a system recovery or replace the hard disk drive, you will not be able to play any previously recorded TV programs that are broadcaster-encrypted.

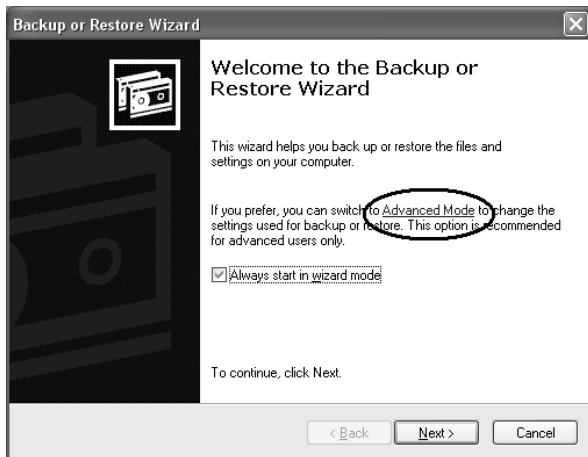
The procedures that follow describe how to prepare your PC, make the backup files you need, copy the file to CD, and use the backup CD to restore the files to your PC after a system recovery.

To prepare the code key files

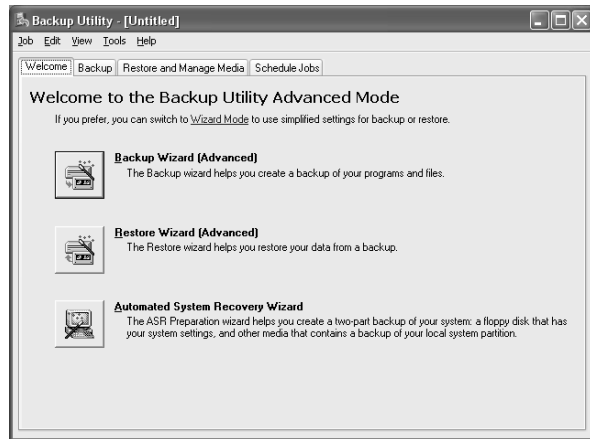
Note: *The code key files and backup CD you make can be used in your PC only.*

- 1 After you set up your PC and turn it on, complete the initial Microsoft Windows setup. Open Media Center and complete its setup.
- 2 Record at least one TV program.
- 3 Close Media Center.
- 4 Open the Microsoft Backup utility: Click **Start** on the taskbar, choose **All Programs**, **Accessories**, **System Tools**, and then click **Backup**. The Backup or Restore Wizard opens.

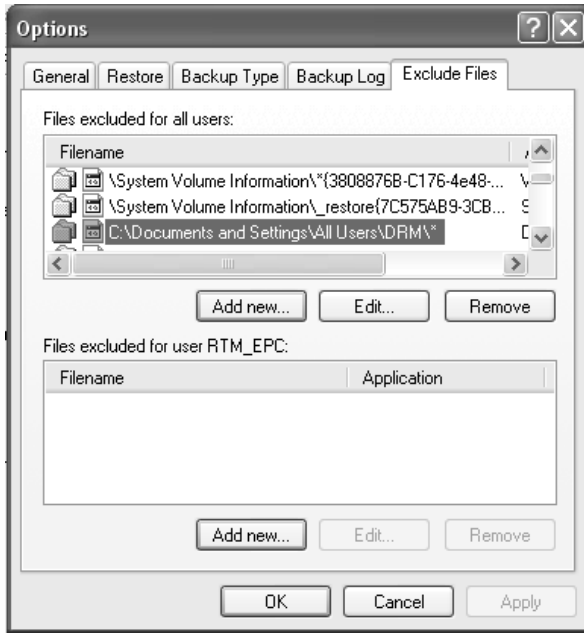
- 5 Click the **Advanced Mode** link near the middle of the window.



- 6 At the top of the Backup Utility window, click **Tools** and select **Options**.

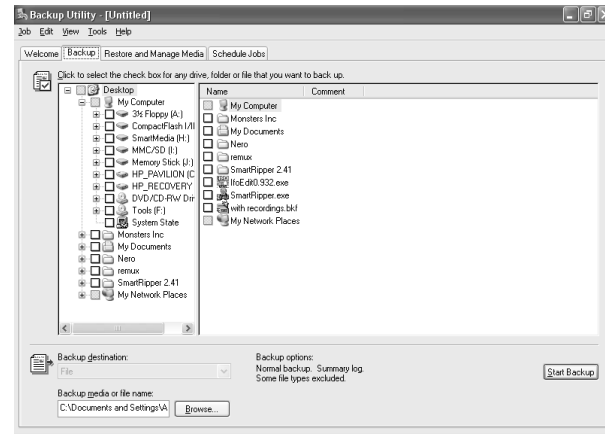


- 7 Click the **Exclude Files** tab.
- 8 In the Files excluded for all users box, put your cursor over the vertical line between Filename and Application in the title bar, and then click and drag the line to the right to see the full entries.

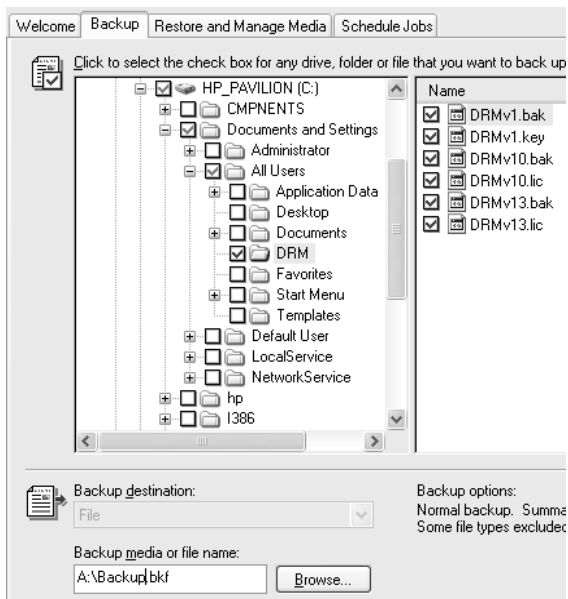


9 Scroll down the list to see and then click the entry: **C:\Documents and Settings\All Users\DRM***

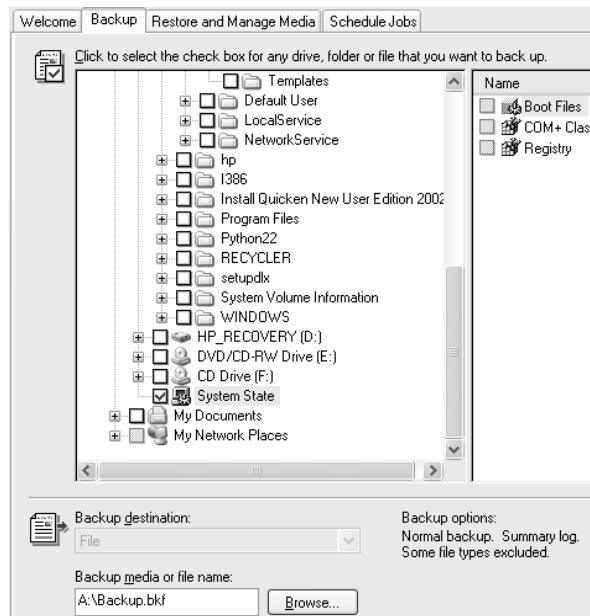
- 10 Click **Remove**.
- 11 Click **Apply**.
- 12 Click **OK**. The Options window closes.
- 13 In the Backup Utility window, click the **Backup** tab.



- 14** In the left box, click the plus sign (+) for HP Pavilion (C). The file tree expands. Click the plus sign (+) for Documents and Settings, click the plus sign (+) for All Users, and then click the **DRM** box so a check mark appears (as shown in the next figure).



- 15** Scroll down the list and click the **System State** box so a check mark appears (as shown in the next figure).



- 16** At the bottom of the window, beneath *Backup media or filename*, click **Browse**. Because a diskette is too small to save the backup file on, you will need to save the file to the desktop portion of the hard disk drive before writing the file to CD. If the message *Insert a disk into drive A* appears, click **Cancel**.
- 17** The *Save as* window opens. In the *Save in* box, select **Desktop** from the drop-down list. In the *Save as* box, use the default name (Backup.bkf) or type in a file name with the extension .bkf and then click **Save**. The window closes.
- 18** Click **Start Backup** in the Backup Utility window. The Backup Job Information window opens.
- 19** Click **Start Backup**. The Backup Progress window opens. When the process finishes, the window displays the message *The backup is complete*.

- 20** Click **Close**.
- 21** Close the Backup Utility window.
Continue with the next procedure.

To make the backup CD

- 1** Click **Start** on the taskbar, choose **All Programs, RecordNow**, and then click **RecordNow** again. The RecordNow window opens.
- 2** Click **Make a Data Disc**.
- 3** Insert a blank CD.
- 4** Click **Next**.
- 5** Click **Add Files and Folders**. The Select files and folders to add window opens.
- 6** In the *Look in* box, select **Desktop** from the drop-down list.
- 7** Click the backup file (for example Backup.bkf) so it appears in the File name box. Click **Add**. The window closes.

- 8 On the RecordNow window, click **Next**. If a warning window opens, click **OK**.
- 9 Wait while the program writes to the CD and the disc tray ejects.
- 10 Remove the CD, label it, and store it in a safe place for use with the next procedure. Click **Done**.
- 11 Close the RecordNow window.
- 12 Because you do not need the backup file you created, drag the file to the Recycle Bin on the desktop. This deletes the copy of the file that was on the hard disk drive.

To use the code key backup CD after System Recovery

Important: *After performing a system recovery procedure, use the CD you made to restore the backup code key files before using Media Center to record TV programs.*



Warning: *You must perform this procedure before recording TV. If you open Media Center and use it to record TV programs before completing this procedure, you cannot play those TV programs after you complete this procedure.*

- 1 Insert the backup CD you made into a drive. The drive window opens and shows the disc contents.

Or

If the window doesn't open automatically, click **Start, My Computer**, and then right-click the drive icon to view the contents of your backup disc.

- 2 Double-click the backup file (for example Backup.bkf). The Backup or Restore Wizard opens.
- 3 Click **Next**.
- 4 Choose **Restore files and settings**, and then click **Next**.
- 5 The What to restore window opens. Click **Browse**, and the browse window shows the A drive. Click **Browse** again, and the window shows *Select file to catalog*. Click the drop-down menu arrow and click the optical drive with the backup CD. Click the backup file name. Click **Open** and then click **OK**.
- 6 In the Items to restore box, click the plus sign (+) for the backup file name. The file tree expands. Click the **C** box so a check mark appears. Click the **System State** box so a check mark appears. (The next figure shows the boxes checked.)



- 7 Click **Next**.
- 8 The Backup or Restore Wizard window shows the message *You have created the following restore settings*. In the window, click the **Advanced** button. Click **Next**.
- 9 A warning message window opens. Click **OK** in the Warning window.

- 10** Select **Replace existing files** and then click **Next**. Click **Next** again. Click **Finish**. The Restore Progress window opens.
- 11** Wait until the process completes, and then click **Close** in the Restore Progress window.
- 12** A Backup Utility message window opens. Click **Yes** to restart the PC. Wait until the restart completes.

Open Media Center and complete the setup. You can now play previously recorded TV programs that are broadcaster-encrypted.

Copying Recorded TV Programs to DVD

You can use Sonic MyDVD to copy your recorded TV shows to DVD (select models only) for viewing and playing in a home DVD player.

Your MyDVD program has an icon called Get Recorded TV Shows.

When you click this icon, the Shared Documents folder on the hard disk drive (C drive) opens and lists your recorded TV shows by name.



The recording quality determines the size of the file created for the recorded program. *Best* is the pre-set recording quality setting. A two-hour program recorded at Best quality produces a large file that will not fit on one DVD. The following table lists the recording quality and the estimated number of minutes that fit onto one DVD.

Recording quality	Minutes on one DVD (est.)
Best	80
Better	95
Good	110
Fair	190

The MyDVD program shows you the available DVD space.



MyDVD displays a message you when you've selected too many shows (or the required space is too large) to go onto the DVD. In this case, use the MyDVD program to "tip and tale" trim the file, creating two smaller files to store onto two independent DVDs.

You cannot change the recording quality of a program after it is recorded.

To change the Recording Quality setting:

- 1 Click **Start**, and then click **Media Center**.
- 2 Click **Settings, TV/DVD, Recorder**, and then click Defaults.
- 3 Select the Quality option, and then change the setting to *Good*. Click **OK**, and then click **OK** again to enter the change.

Standby Mode and Scheduled Recordings

You should always close Media Center before you manually place the PC in Standby mode to avoid file corruption and other recording problems.

Note: *If Live TV or other media is playing in Media Center, the PC won't go into Standby mode automatically.*

Switching Display Devices

When you connect more than one display device (CRT monitor, flat panel monitor, TV, etc.) to the PC, you can quickly change where the PC desktop appears by pressing Alt+F5. Each time you press the Alt+F5 key combination, the PC display appears on the next device.

If Alt+F5 does not work, restart the PC and try again.

Updated Information about Software Programs

The following information updates software program information in your *Hardware Guide*:

- **www.myhpclub.com** is a special Web site for HP Pavilion home PC owners, including owners of Media Center PC. You will find fun projects, important product notices, support updates, tips, and special offers from HP; just press the HP button on the keyboard or enter the address in your Internet Web browser.
- **GameChannel** is a Web site where you can play cool 3-D games from WildTangent. It provides the best online gaming experience available today, and the games are updated all the time.
- **Quicken 2003 New User Edition** is a program for new users that is available on your PC. Start organizing your finances with Quicken: balance your checkbook quickly, pay bills easily, track spending, and save time!
- **InterVideo WinDVD** lets you watch DVD movies and video by using an interactive menu.

Capturing Analog Home Video

The TV tuner card of your PC allows you to play television programs in Media Center. The TV tuner card also allows you to connect a VCR, a camcorder, or another analog video device to the PC, and then capture your home video as a file.

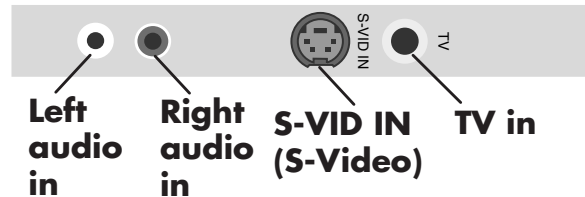
You cannot play a television program and capture analog video at the same time: Your PC will automatically restart or experience other problems.

To connect the analog home video source and record

- 1 Open Media Center. Click **Start** and then click **Media Center**.
- 2 Cancel any TV programs recording or scheduled for recording during this capture procedure:

Click **My TV, Recorded TV**, and then click **Scheduled**. Select any program scheduled for the same time as you are capturing your video, and then click **Don't Record**.

- 3 Close Media Center. You can now safely use your analog capture feature in ArcSoft ShowBiz.
- 4 Click **Start**, click **Turn Off Computer**, and then click **Turn Off**.
- 5 Use a coaxial cable or S-video cable to connect your analog home video source (VCR or camcorder) to the TV in connector or S-VID IN connector on the back of the PC. If necessary, first disconnect the cables for the TV signal from your antenna or set-top box.



Important: *If you use a composite video cable (RCA style), connect the cable to the S-video to composite video adapter, included in your PC box, and then connect the adapter to the S-VID IN (S-video) connector on the back of the PC.*

Also, plug audio cables (not provided) from your VCR into the right audio in (red) connector and the left audio in (white) connector on the back of the PC.

- 6 Press the On button on the front of the chassis to turn on the PC.
- 7 Turn on your analog home video source device.
- 8 On the PC desktop, click **Start**, choose **All Programs, ArcSoft ShowBiz**, and then click **ShowBiz**.
- 9 Click the **Capture** button in the ShowBiz window.

Note: *The preview window in ShowBiz is dark until you begin playing your VCR or camcorder.*

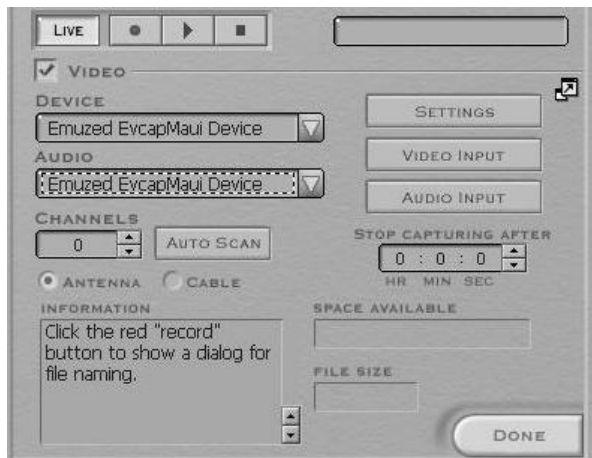


10 In the ShowBiz capture window, click the *Device* drop-down list and select the source for video; choose based on your card type:

- Emuzed EvcapMaui Device

Or

- Hauppauge WinTV PVR PCI II



11 Select the same item from the *Audio* drop-down list; choose:

- Emuzed EvcapMaui Device

Or

- Hauppauge WinTV PVR PCI II

12 Click the **Video Input** button, and click a selection based on the cable connection you made in step 3:

- S-video
- Composite Video — for the S-video to composite video adapter
- TV Tuner — for the coaxial cable connector



13 Click the **Audio Input** button and click a selection based on the cable connection you made in step 3:

- Tuner In — for both S-video and coaxial cable
- Line In — when you used the S-video to composite video adapter and connected audio cables to the audio in connectors



14 Press the play button or otherwise start your VCR or camcorder.

15 In the ShowBiz capture window, click the red-dot (record) button and type the file name for the video. To capture the video from the beginning, rewind your VCR or camcorder and begin play again.

16 Click the **square (stop)** button to stop capturing video. Your file is stored in the My Videos folder with the file name you typed in step 15.

With the video file, you can:

- Edit the video file by using ArcSoft ShowBiz.
- Store your video file on DVD by using the Sonic MyDVD program in the Start/All Programs menu.
- View your video file using Media Center (copy or move the video file into the Shared Videos folder to allow all users on the PC to view it).

- 17 When done capturing video, follow the steps in the next procedure to disconnect your device and return to the original signal source setup.

To disconnect the analog home video source

- 1 Turn off your analog home video device.
- 2 On the PC desktop, close any open programs.
- 3 Click **Start**, click **Turn Off Computer**, and then click **Turn Off**.
- 4 Disconnect your analog home video source (VCR or camcorder) cable from the connectors on the back of the PC.
- 5 Reconnect the original TV signal cables to the back of the PC.
- 6 Press the On button on the front of the chassis to turn on the PC.

- 7 Open Media Center and reschedule recording for any TV programs you canceled during this capture procedure.

- 8 From the Media Center start menu click **My TV**, and then click **Guide**. Find the show you canceled and then select it.

Or

If the show is a part of a recorded series, click **Recorded TV** from the Media Center start menu, and then click **Recording errors**. Find the show you canceled and then select it.

- 9 Click **Record** for a future show or click the **Record** icon (red circle) if the show is currently playing.
- 10 Close Media Center

Important: *HP supports lawful use of technology and does not endorse or encourage the use of our products for purposes other than those permitted by national copyright law.*

Using Application Recovery and System Recovery

The PC uses the operating system and installed software programs during normal operation. If your PC works improperly or stops because of the software, you may be able to repair it.

You need recovery discs (CDs or DVDs) for some repairs that use the HP Application Recovery program or the HP PC System Recovery program. The PC does not include recovery discs in the accessory box, but you can make your own recovery CDs or DVDs; see “Using HP PC Recovery CD-DVD Creator.”



Caution: *It is strongly recommended you create your recovery CDs or DVDs before you need them.*

You should also make the Recovery Tools CD. This CD contains utilities that allow you to make changes to your hard disk drive, including removing the recovery partition. See “Using HP Recovery Tools CD.”

HP and Microsoft provide several methods to fix your PC, including using the System Recovery program. Try these methods in the order listed here:

- **Restart** When you restart the computer, the PC starts over using the operating system and software in its memory. This is the simplest repair for your PC: Just click **Start**, choose **Turn Off Computer**, and then click **Restart**.

- **Turn Off Computer** When you turn off the computer and then turn it on again, you force the PC to copy the operating system into its memory and to clear some tracking information. This may eliminate some problems that can remain after performing a Restart.
- **Driver Rollback** This Microsoft Windows XP feature is part of the Windows Installer program used with the *Add or Remove Programs* utility in the Control Panel. It can revert to the previous version of a driver program if an installation fails when you are installing a new version of the driver program. For more information, type *Rollback* into the Search box in Help and Support.
- **System Restore** This Microsoft Windows XP feature creates a restore point where it records the PC settings at that time and date. You can later return the PC to the settings recorded at the restore point. You can create a specific restore point, or have the operating system create a restore point. For example, when you use *Add Programs* to add a software program, the operating system automatically creates a restore point before it adds the software. Use System Restore to return the PC to the settings the PC had before you installed the program. For more information, type *System Restore* into the Search box in Help and Support.

- **Application and Driver Recovery** If the problem with the PC seems to be with only one program or one driver, it may be that the application program or the driver program is damaged. You can reinstall individual factory-installed application programs and driver programs using the HP Application Recovery program (select models only).
- **System Recovery** Use the HP System Recovery program as a last resort to reinstall the software. Perform System Recovery using the hard disk drive partition first; see "System Recovery." If necessary, next perform System Recovery using the recovery CDs or DVDs and choose Standard Recovery; see "Starting System Recovery using recovery discs." Finally, if necessary, perform System Recovery using the recovery CDs or DVDs and choose Full System Recovery.

Before using the HP PC System Recovery program or the HP Application Recovery program, use System Restore.

Note: *Your PC hard disk drive contains the System Recovery image in a partition area of the disk drive. The PC does not include recovery discs in the accessory box, but you can make your own recovery CDs or DVD; see "Creating Recovery CDs/DVDs."*

Creating Recovery CDs/DVDs

1 You can **recover (bring back)** the operating system and programs that were included on your hard disk drive just as they were when you bought the computer.

Note: A **hard drive** is a disk inside the computer that stores the operating system, programs, and data.

2 You recover the operating system and programs directly from your hard disk drive, where a copy was placed for your convenience.

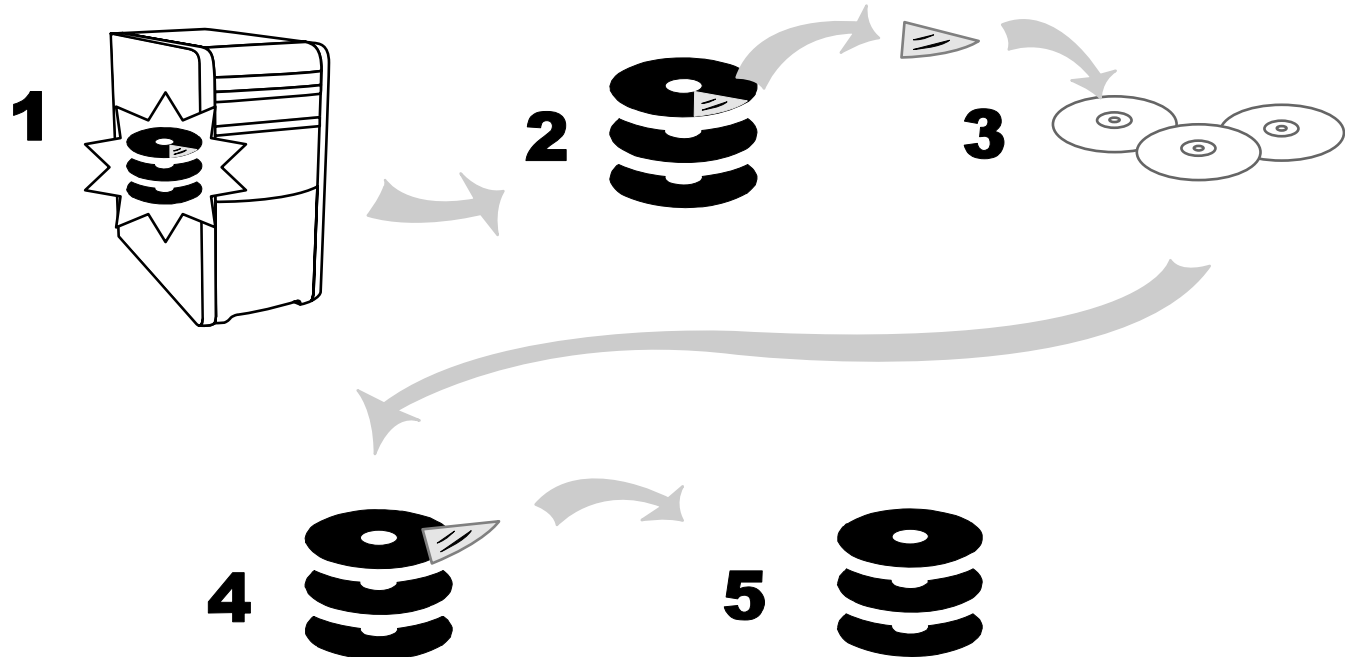
We call this part of your hard drive the “**recovery partition.**”

The recovery partition takes up some space on your hard drive.

3 You can copy the information of this recovery partition onto CDs or DVDs.

4 Then, if you would like to make extra space available on your hard drive, you can delete the recovery partition using a special software tool.

5 Do not delete your hard drive partition unless you have made recovery CDs or DVDs.



The recovery discs can be used only with the specified PC model. The discs are licensed for use only with your HP Pavilion home PC. The recovery discs can install the operating system and software on your PC hard disk drive if the software becomes corrupted or is accidentally erased.

Using HP PC Recovery CD-DVD Creator

Make recovery CDs or DVDs (select models only) for your PC by using HP Recovery CD-DVD Creator before you experience any problem.


The recovery discs set is a complete image of the original HP Pavilion home PC hard disk drive contents and is matched to your PC model number. The discs set contains the operating system, drivers, and application software that were originally installed on the PC at the factory.

You can use this program to make only one set of recovery CDs or a DVD for your PC. The recovery discs you create can be used only on your PC. To use this program, your PC must have a CD-RW drive, DVD Writer drive, or other drive that can write to the CDs or DVDs. If necessary, purchase a Windows XP-compatible drive from your local PC or electronics store.

The number of CDs or DVDs in the recovery set depends on your PC model. The program tells you the number of blank discs needed to make the set. The process takes some time, including up to 15 minutes per disc to verify that the information written on the disc is correct.

You can quit the process at any time. The next time you run the program, it begins where you left off.

To run HP PC Recovery CD-DVD Creator

- 1 Close any open programs. To close programs, click **X** in the upper-right corner of each window. 
- 2 Click **Start** on the taskbar.
- 3 Choose **All Programs**.
- 4 Choose **Hewlett-Packard**.
- 5 Choose **hp pavilion pc tools**.
- 6 Click **hp pc recovery CD-DVD creator**.
The creator window appears.
- 7 Follow the onscreen instructions. Label each disc as you make it.

Store the recovery discs in a safe place.

Using HP Recovery Tools CD

Your PC allows you to create (burn) a Recovery Tools CD. After you make the HP Recovery Tools CD, you can use it to:

- Read instructions to use each utility on the Recovery Tools CD.
- Start the System Recovery program from the recovery partition.
- Remove the System Recovery partition from your PC hard disk drive to increase space for data.
- Create a new data partition on your PC hard disk drive.
- Start the Microsoft Recovery Console (a utility from Microsoft that can perform operating system diagnostics and repairs).



Warning: *Before using the HP PC Recovery Tools CD to change your hard disk drive, make System Recovery discs for your PC by using the HP PC Recovery CD-DVD Creator program. You cannot make System Recovery CDs after you remove the System Recovery partition.*

To create or to start the HP PC Recovery Tools CD

- 1** Click **Start** on the taskbar.
- 2** Choose **All Programs**.
- 3** Choose **Hewlett-Packard**.
- 4** Choose **hp pavilion pc tools**.
- 5** Click **hp pc recovery tools CD**.

Follow the onscreen instructions.

System Restore



Warning: *Try System Restore before using the HP System Recovery program.*

If software on your hard disk drive accidentally gets erased or damaged, first use the Microsoft *System Restore* feature in Windows XP to restore the PC system and program settings.

System Restore returns the PC settings to a selected restore point without affecting user programs or document files. For more information, type *System Restore* into the Search box in Help and Support.

Application Recovery

Note: *Not all models include the Application Recovery program. Perform steps 3 through 7 of the following procedure. If HP Application Recovery appears in the folder, your PC includes the program.*

If an individual factory-installed application or driver accidentally gets erased or damaged, you can reinstall the software using the HP Application Recovery program.

Note: *Do not use the Application Recovery program to reinstall software programs that came on CDs or DVDs included in the PC box. Reinstall these programs directly from the CDs or DVDs.*

To start Application Recovery:

- 1 Close all applications and folders.
- 2 Uninstall the existing (damaged) application.
- 3 Click **Start** on the taskbar.
- 4 Choose **All Programs**.

- 5 Choose **Hewlett-Packard**.
- 6 Choose **hp pavilion pc tools**.
- 7 Click **hp application recovery**.
- 8 Click **Application Installation** or **Driver Installation**, and then click **Next**.
- 9 Select the driver or application program to install, and then click **Install**.
- 10 Follow the onscreen instructions.
- 11 Repeat steps 8 through 10 to install other drivers or applications.
- 12 When you have finished recovering applications or drivers, close the Application Recovery program. Then click **Start**, click **Turn Off Computer**, and click **Restart** to restart the PC.



Warning: *Do not skip this last step! You must restart the PC when you are finished recovering applications or drivers.*

System Recovery

When other methods of repairing your system software (like System Restore or Application Recovery) fail, you may want to use the HP System Recovery program as a last resort to reinstall the software.

When necessary, you can reinstall the operating system and the application software that was originally installed on the PC at the factory by using the System Recovery program.



Warning: *The HP System Recovery program will delete any data or programs that you installed after purchase. Be sure to back up any data that you want to keep onto a removable disc.*

The System Recovery program uses a special *recovery partition* on the hard disk drive that stores an image of the original software.

Note: *The System Recovery image is in a partition area of the hard disk drive and takes up part of the total drive space. This disk space is not usually available for your use.*

In the unlikely event that you replace the hard disk drive, or somehow damage the data in the special recovery partition on the hard disk drive, use recovery discs to reinstall the operating system and software to the hard disk drive. See “System Recovery Using Recovery Discs.”

Make your own recovery discs (CDs or DVD) before you need them; see “Using HP PC Recovery CD-DVD Creator.” You can also make the Recovery Tools CD. This CD contains utilities that allow you to make changes to your hard disk drive; see “Using HP Recovery Tools CD.”

To start System Recovery if the PC is responding

- 1** Turn off the PC. Disconnect all peripheral devices from the PC except the monitor, the keyboard, and the mouse. Turn on the PC.
- 2** Click **Start** on the taskbar, choose **All Programs**, choose **Hewlett-Packard**, choose **hp pavilion pc tools**, and click **hp pc system recovery**.
- 3** Wait until the System Recovery window appears asking *Do you really want to start System Recovery?*
- 4** Click **Yes** to continue with the recovery process. If you created recovery discs, you may be directed to insert recovery disc #1.
- 5** The PC starts the recovery; wait for the onscreen instructions to display, and then follow those instructions.
- 6** Complete the PC startup, and finish the registration process. Then reconnect all peripheral devices.

To start System Recovery if the PC is not responding

- 1** Turn off the PC. If necessary, press and hold the On button until the PC turns off.
- 2** Disconnect all peripheral devices from the PC except the monitor, the keyboard, and the mouse.
- 3** Press the On button to turn the PC on.
- 4** During the startup, do the following to enter the System Recovery program:

When the blue screen with the *HP Invent* logo appears, press the F10 key on the keyboard. (You have only a few seconds to press the F10 key before the normal startup process continues.)
- 5** The PC starts the recovery; wait for the onscreen instructions to display, and then follow those instructions.
- 6** Complete the PC startup, and finish the registration process. Then reconnect all peripheral devices.

System Recovery Using Recovery Discs

Make your own recovery CDs or DVDs before you need them; recovery discs are not included with your PC. See “Creating Recovery CDs/DVDs.”

Starting System Recovery using recovery discs

The recovery discs provide two recovery options:

- **Standard Recovery:** This option recovers factory-shipped programs, drivers, and the operating system without affecting any data files that you may have created since purchasing this PC. Some data files may be difficult to find after the System Recovery, so it is best to back up all hard disk drive files before performing a System Recovery.

- **Full System Recovery:** This recovery function completely erases and reformats the hard disk drive. The program performs a full System Recovery to reinstall the operating system, programs, and drivers from the recovery discs. However, you must reinstall any software that was not installed on the PC at the factory. This includes software that came on CDs included in the PC accessory box, and software programs you installed since your purchase.

Note: *If your PC has a blank or corrupted hard disk drive, you will see only the full System Recovery option.*

To run the System Recovery program using recovery discs

- 1 If the PC works, back up all data files that you want to save onto removable media, such as CD-RW or diskette. Remove the backup CD or diskette you've made.
- 2 Press the Eject button on the top CD-ROM drive, and wait for the tray to open. Insert Recovery disc #1 and close the tray.
- 3 Turn off the PC:
 - If the PC works: Click **Start** on the taskbar, click **Turn Off Computer**, and then click **Turn Off**.

Or

 - Press and hold the On button approximately 5 seconds until the PC turns off.
- 4 Disconnect all peripheral devices from the PC except the monitor, the keyboard, and the mouse.

- 5 Press the On button to turn on the PC.
- 6 The PC starts the recovery; wait for the onscreen instructions to display, and then follow those instructions.
 - For standard recovery, press R. Click **Next** to proceed with the System Recovery. Click **Yes** to start the recovery. Insert the remaining recovery discs when directed.

Or

 - For full System Recovery, press F. Click **Yes** to perform a full System Recovery. Confirm that you want to create a recovery partition. Insert the remaining discs when directed.

Or

 - If your PC hard disk drive is blank or corrupted, press R to perform a full System Recovery. Confirm that you want to create a recovery partition. Insert the remaining recovery discs when directed.

- 7** When the recovery program finishes, click **Restart** to restart the PC.
- 8** Before the PC restarts, the drive tray ejects. Remove the disc.
- 9** After the PC restarts, a series of startup screens appears. To proceed with the initial Microsoft Windows setup, you must answer a few questions.
- 10** Complete the registration process, and then reconnect all peripheral devices.
- 11** Reinstall software not originally installed on the PC by the factory.
- 12** Copy data files that you saved on the backup CD or diskette you made to your hard disk drive.



5 9 9 0 - 5 7 1 9