


get *Started***1** Install the main battery

Slide the battery pack into the battery slot, and push firmly until it snaps into place. Your HP Jornada should start automatically; however, if the main battery is low you may need to connect the AC adapter first, as described in step 2.

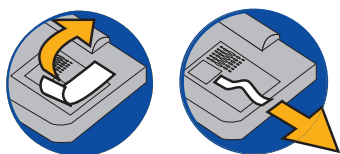
 Do not activate the backup battery before you install the main battery and connect the AC adapter.

**2** Connect the AC adapter


Connect the cable from the AC adapter to the DC jack on the right side of the HP Jornada. Then, connect the power cable to the AC adapter, and plug the other end of the power cable into an AC power outlet.

3 Activate the backup battery







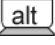
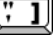
The backup battery has been pre-installed, but must be activated before use. To activate the backup battery, pull the tape from beneath the backup battery cover plate. Do not unscrew the cover plate.

**5** Follow the Welcome Wizard

Follow the instructions on your screen to complete the Windows CE Welcome Wizard. If you have HP Jornada model 680 or 690, the HP country selector program will prompt you to select your country to ensure that the built-in modem is configured properly.

 If your HP Jornada freezes during operation, you may need to reset the device. To reset, use the stylus to press the reset button on the left side of the keyboard.

4 Adjust contrast and brightness

Adjust the brightness and contrast of the display for comfortable viewing. Press   or   to adjust the contrast. Press   or   to adjust the brightness.

6 Register your HP Jornada

To ensure that you receive warranty coverage, technical support, and information on upgrades from Hewlett-Packard, register your HP Jornada now at www.hp.com/jornada

Installing PC Cards and CompactFlash Cards

The HP Jornada has a unique expansion module with two slots to accommodate both a PC Card and a CompactFlash Card in a small, portable size. You can install either a PC Card or CompactFlash Card, or install both at the same time. For a list of recommended cards, visit the HP Web site at www.hp.com/jornada

PC Card

The PC Card fits in the slot on the left side of the HP Jornada.

To install

- Slide the PC Card carefully into the PC Card slot. The expansion module will extend from the bottom of the unit.
- If you place your HP Jornada on a flat surface, extend the stabilizer to keep the device level.

To eject

- Press the PC Card release tab to eject the PC Card. The PC card will be pushed out of the unit slightly.



Do not obstruct the slot opening or hold down the expansion module when ejecting the PC Card.

- Hold the PC Card and pull it out completely.
- Once the PC card is out, the expansion module will recede back into the unit. Gently push it further down if necessary.



When using thicker PC Cards (for instance PCMCIA I/O Cards), you may initially feel some slight resistance when pulling out the card. Try pushing the card back in and eject again.

CompactFlash Card

The CompactFlash Card slot is located at the bottom of the unit, on top of the PC Card slot. Pressing the latch-bar will flip open the slot door.

To install

- Press the latch-bar at the opening of the slot with your finger while holding down the opposite end of the expansion module with your thumb, as shown in the diagram.
- Slide the CompactFlash Card into the slot. The finger pull (raised edge) on the CompactFlash Card should face up, and the main label down.
- Close the expansion module by pushing down until it clicks into place.

**To remove**

- To remove a CompactFlash Card, press the latch-bar while holding down the opposite end of the expansion module. The expansion module springs open.



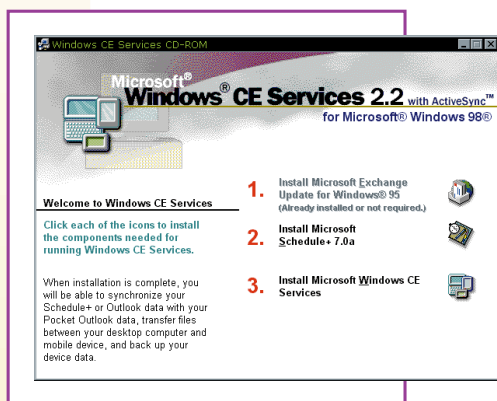
To open the expansion module when a CompactFlash Card is inside, you may find it convenient to use the stylus instead of your finger to push down into the groove between the CompactFlash Card and the latch-bar.



To use a CompactFlash Card that requires a cable connection, you must use a PC Card adapter to install the CompactFlash Card in the PC Card slot.

connect to your desktop PC

getting Help



1 Install Windows CE Services

1. Insert the Desktop Software for Microsoft Windows CE compact disc into the CD-ROM drive on your desktop PC.
2. The Windows CE Services Setup Wizard should start automatically. If it does not, click Run on the Start menu, and then type `d:\setup`, where `d` is the letter assigned to your CD-ROM drive.
3. Follow the directions on your screen to install Windows CE Services.

2 Place your HP Jornada in the docking cradle

1. Connect the 9-pin end of the sync cable to a serial port on your desktop PC and insert the flat end of the sync cable, arrow side up, into the serial port on the docking cradle.
2. Turn off your HP Jornada and disconnect any cables (power cable, telephone cable, etc.).
3. Connect the AC adapter to the cradle and plug it in.

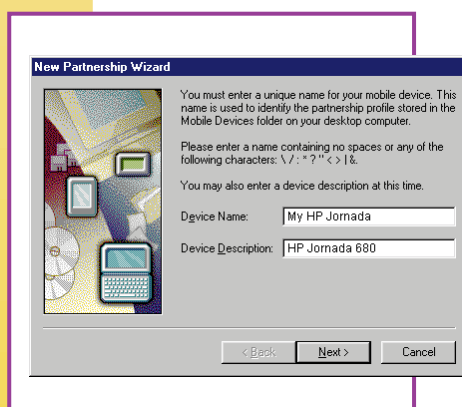


Do not connect your HP Jornada to more than one source of AC power. You must disconnect the AC adapter from your HP Jornada before placing it in the docking cradle to avoid damaging your HP Jornada.

4. Align your HP Jornada in the docking cradle, and push down firmly until it snaps into place.

3 Establish a partnership

After you place your HP Jornada in the docking cradle, your desktop PC should display the New Partnership Wizard. Follow the instructions on the screen to choose options for synchronizing contacts, calendar, tasks, e-mail messages, and files between your HP Jornada and desktop PC. For more information, see the HP Jornada User's Guide.



CDROM

The HP Jornada compact disc included with your HP Jornada contains useful programs from leading developers of software for Windows CE. The compact disc includes these programs:

- Outside In® file viewer from Inso® Corporation
- Pocket Quicken™ from On the Go Software (US only)
- TrueSync® CE 2.0 from Starfish Software, Inc.
- PhoneManager from Trio (Europe and Asia Pacific only)
- Image Expert™ CE from Sierra Imaging, Inc.
- HP PIM Translation Utility

Before installing software from the HP Jornada compact disc onto your HP Jornada, you must establish a connection between your HP Jornada and your desktop PC.