

**hp pocket camera
for hp jornada pocket pc**

User's Guide



Printed in Singapore
Edition 1

Copyright

The information contained in this document is provided “as is” and is subject to change without notice.

Hewlett-Packard Company makes no warranty of any kind with regard to this manual, including, but not limited to, the implied warranties of merchantability and fitness for a particular purpose. Hewlett-Packard Co. shall not be liable for any errors contained herein or for incidental or consequential damages in connection with the furnishing, performance, or use of this manual or the examples herein.

© Hewlett-Packard Co. 2001.

This document contains proprietary information that is protected by copyright. All rights are reserved. No part of this document may be photocopied, reproduced, adapted, or translated to another language without the prior written consent of Hewlett-Packard Co., except as allowed under the copyright laws.

The programs that control this product are copyrighted and all rights are reserved. Reproduction, adaptation, or translation of those programs without prior written permission of Hewlett-Packard Co. is also prohibited.

All brand names and product names used in this document are trade names, service marks, trademarks, or registered trademarks of their respective owners.

Contents

Welcome	1
What's in the Box	2
The HP Pocket Camera	3
Focusing Your Pocket Camera	4
Getting Started	5
Step 1: Insert the HP Pocket Camera into Your HP Jornada	7
Step 2: Snap a Picture	8
Step 3: View and Share Pictures	11
Viewing Pictures	11
Sharing Pictures	13
Removing Your HP Pocket Camera	17
Tips for Taking Better Pictures	19

Features and Usage	21
Using the Timer	22
Adjusting Exposure	23
Setting Picture Quality	25
Choosing Picture Size	26
Applying Digital Effects	27
Metering Options	29
Viewing and Editing Pictures	30
Viewing Pictures	30
Editing Pictures	36
Rotating Pictures	38
Recording Sounds with Pictures	39
Conserving Memory	41
Advanced Options	43
Conserving Power	43
Displaying Detailed Onscreen Information	46
Camera Log	47
Troubleshooting and Support	49
Caring for Your Pocket Camera	52
Support	52
Glossary	53
Index	55

Welcome

Congratulations on purchasing the HP pocket camera for HP Jornada Pocket PC. Take it with you wherever you go. It's easy to snap pictures and share them with your friends or colleagues—just plug in the camera, snap a picture, and send it by e-mail!

Here are a few features that make the HP Jornada pocket camera ideal for business or personal use:

- Enjoy fully automatic, point-and-shoot photography.
- Easily transfer pictures from your HP Jornada to your desktop PC or to selected infrared-equipped printers (such as the HP DeskJet 990Cxi) that support IrOBEX.
- JPEG file format can be used in e-mail or on Web sites.
- Record voice notes along with a picture.
- Digital effects and manual control of exposure settings let you customize your pictures.
- Integrated slideshow program lets you view pictures in sequence right on your HP Jornada.

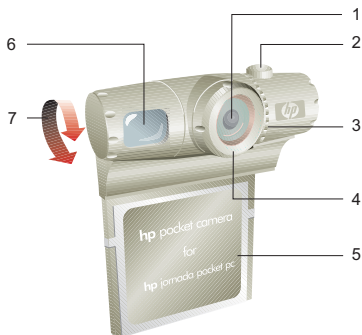
What's in the Box

In addition to the camera itself, your HP Jornada pocket camera comes with the following components:

- carrying pouch
- this User's Guide
- regulatory information and warranty booklet
- HP CD-ROM

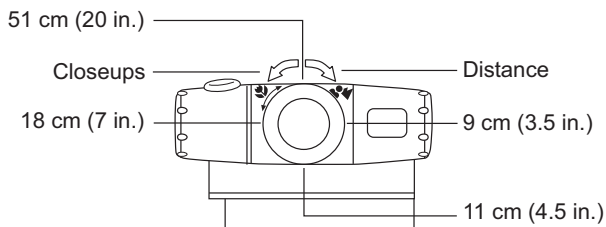
The HP CD-ROM contains two programs: the HP pocket camera software (for your HP Jornada) and a photo imaging program (for your desktop PC). The HP pocket camera software must be installed on your HP Jornada before you can snap pictures. The photo imaging program lets you edit and enhance the pictures you take with your HP Jornada pocket camera.

The HP Pocket Camera



- 1 **Lens.**
- 2 **Shutter button.** Press this button to snap a picture.
- 3 **LED ring.** Indicates camera status:
 - Steady green light: camera is ready to snap pictures.
 - Blinking slowly: camera is in Standby mode (using minimal power).
 - Blinking fast: camera is busy.
 - Off: camera is off or is not in use.
- 4 **Focus ring.** Turn the ring to focus on your subject. See "Focusing your Pocket Camera."
- 5 **CompactFlash™ Type I interface.** Connects to the CompactFlash card slot on your HP Jornada.
- 6 **Optical viewfinder.** Use the optical viewfinder for subjects at distances greater than 2 m (6 ft) or when it is difficult to see the digital viewfinder on the screen of your HP Jornada.
- 7 **Swivel lens.** Rotate the lens to point to the front or back or any angle in between.

Focusing Your Pocket Camera



Turn the focus ring to focus on close-up subjects (10 – 110 cm [4 – 46 in.]). Adjust the focus ring until the image in the digital viewfinder on the screen of your HP Jornada is clear. The digital viewfinder displays subjects exactly as they will be captured by the pocket camera.

The diagram shows the approximate position of the focus ring, based on the estimated distance of the subject. For subjects at distances greater than 110 cm (46 in.), turn the ring clockwise until it clicks into place.

Getting Started

Before using your HP Jornada pocket camera, you must first install the HP pocket camera software from the HP CD-ROM onto your HP Jornada. You only need to do this once. However, if you reset your HP Jornada to the factory default settings, or if you lose power and thereby erase all data on your HP Jornada, you will need to reinstall the software before you can use your camera again.

To install the HP pocket camera software

1. Connect your HP Jornada to your desktop PC.
2. Insert the HP CD-ROM into a CD-ROM drive on your desktop PC. Installation should begin automatically.
If installation does not begin, click **Run** on the **Start** menu, and type `d:\hpcd.exe` (where `d:` is the drive letter of the CD-ROM drive). Press Return.
3. Follow the instructions on your screen to complete installation.

After you have installed the software onto your HP Jornada, follow these steps to begin snapping pictures and sharing them with your friends and colleagues:

Step 1:

Insert the pocket camera into your HP Jornada.

Step 2:

Snap a picture.

Step 3:

View and share pictures.

The following sections describe each of these steps in detail. In addition, the “Features and Usage” section provides further information on the features of your pocket camera and software that can help you take better pictures.

Step 1: Insert the HP Pocket Camera into Your HP Jornada

To insert the HP pocket camera

- Insert the pocket camera until it is firmly seated in the CompactFlash card slot of your HP Jornada, as shown in the diagram.

The green LED ring on the camera will blink and then change to steady green to indicate that it is ready.



When you insert the HP pocket camera, your HP Jornada automatically turns on in Capture mode. When you see the camera's digital viewfinder on the screen of your HP Jornada, you're ready to begin snapping pictures!

! When you place your HP Jornada and pocket camera on a flat surface, be sure that the lens is not facing down. Resting the HP Jornada on the camera lens may place stress on the camera joints.

! Do not use excessive force when handling the HP pocket camera or when inserting or removing it. Align the CompactFlash interface of the camera carefully with the CompactFlash slot of your HP Jornada. Be sure the camera is oriented as shown.

Step 2: Snap a Picture

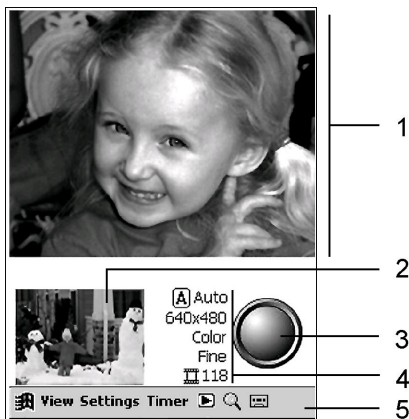
Using the optical viewfinder

1. Look through the optical viewfinder to frame the subject.
2. Press the shutter button on the camera.


Using the digital viewfinder on the display of your HP Jornada

1. Move the camera as necessary to frame the subject you want to photograph in the digital viewfinder.
2. Tap the shutter button on the touch screen, or press and release the Action button on your HP Jornada.

When you snap a picture, your HP Jornada makes a clicking sound (if you have not muted the sounds), and the green LED ring on the camera blinks rapidly to indicate that the picture has been taken and your HP Jornada is processing the picture. It may take a few seconds to process and store the picture, depending on its size, quality, and complexity.





Capture Mode

- Digital viewfinder.** Displays the picture currently framed by the camera. Tap  to zoom the view of the picture in or out.
- Last Picture window.** Displays the last picture captured.
- Shutter button.** Tap to snap a picture.
- Capture settings.** Show the current picture and exposure settings. Tap to change settings (for more information, see the “Features and Usage” section).
- Command bar.** Tap menus or icons to change modes, set options, or display advanced controls. Tap the Start button to switch between the HP pocket camera software and other applications.




NOTES

- Wait for the LED ring on the camera to shine a steady green before you snap a picture.
- If the pocket camera was not inserted properly, the digital viewfinder displays the  icon.
- The HP pocket camera software must be in Capture mode before you can snap a picture. If it is in Review mode, tap **Capture** on the **View** menu, or tap the  icon in the Command bar, to switch to Capture mode.



TIPS


- Use the optical viewfinder when lighting conditions make it difficult to see the picture on your HP Jornada screen or when your HP Jornada cover is closed.
- Use the optical viewfinder when subjects are at distances greater than 2 m (6 ft).
- If you cannot get as close as you would like to your subject, tap  on the Command bar to zoom in on your subject. Tap again to return to normal.
- Pictures you snap using the zoom feature may not be as sharp as other pictures. Be careful to hold the camera steady when snapping zoomed pictures.
- After you aim the camera, wait a moment to steady the camera and to ensure that automatic exposure has taken effect. Remember: aim, steady, and then snap.

Step 3: View and Share Pictures

Viewing Pictures

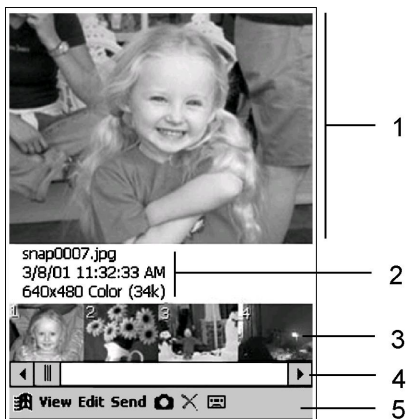
Use Review mode to browse the pictures you have taken and to send pictures in e-mail messages to friends and colleagues.

To switch to Review mode

- On the **View** menu, tap **Review**.
—or—
Tap  on the Command bar.



Review mode has many powerful features, including simple editing functions and the ability to display pictures in sequence as a slideshow. For more information, see the “Viewing and Editing Pictures” section.



Review Mode

1. **Preview window.** Displays the selected picture. (If no picture is selected, the Preview window is blank.)
2. **Image information.** Displays the file name, capture date and time, quality, and size of the selected picture.
3. **Thumbnails.** Displays smaller images of all the pictures in the current folder. Tap a thumbnail to display that picture in the Preview window.
4. **Scroll bar.** Tap to scroll forward or back through thumbnails.
5. **Command bar.** Tap menus or icons to change modes, edit the selected picture, or send the picture by e-mail or infrared. Tap the Start button to switch between the HP pocket camera software and other applications.

Sharing Pictures

You have several options for sharing pictures with friends and colleagues. You can send pictures as attachments to e-mail messages, send pictures to a desktop PC or Pocket PC via infrared, print pictures on an infrared-equipped printer, or transfer images to your desktop PC using Microsoft® ActiveSync®.

Sending Pictures by E-mail

E-mail is a fast, easy way to share pictures with friends and colleagues. You can send pictures by e-mail using the HP pocket camera software and the Inbox program on your HP Jornada.

To send pictures by e-mail

1. In Review mode, tap a thumbnail to select the picture you want to send.
2. On the **Send** menu, tap **E-mail**.
3. The Inbox application starts and opens a new e-mail message. The selected picture is attached to the message as a file attachment.
4. Enter the recipient's name in the **To** field, and enter a subject for the message.
5. Enter any text in the body of the message.
6. When you have finished composing your message, tap **Send**.

For more information on addressing and entering e-mail messages, refer to your HP Jornada User's Guide or tap **Help** on the HP Jornada **Start** menu.

The message remains in the Outbox folder on your HP Jornada until you connect to your Inbox service to send and receive messages, or until you connect your HP Jornada to your desktop PC to synchronize messages or perform an Inbox transfer. For more information on sending messages from your HP Jornada, refer to your HP Jornada User's Guide, ActiveSync Help on your desktop PC, or Inbox Help on your HP Jornada.

Sending Pictures to Another Pocket PC or Infrared-Equipped Device

The infrared port on your HP Jornada enables you to share pictures with other Pocket PCs or mobile devices that use the IrDA protocol.

To send a picture by infrared

1. In Review mode, tap a thumbnail to select a picture.
2. On the **Send** menu, tap **Infrared**.
3. Align the infrared port on your HP Jornada with the infrared port on the receiving device.
4. If the receiving device is a Pocket PC, on the receiving device, tap the **Start** menu, tap **Programs**, and then tap the Infrared Receive icon.

—or—

If the receiving device is another type of Microsoft Windows CE device, in File Explorer on the receiving device, tap the **File** menu, and then tap **Receive**.

Sending Pictures to a Desktop PC or Printer Using IrOBEX

The IrOBEX protocol is used by many new printers, such as the HP DeskJet 990Cxi, as well as by some desktop and notebook computers that run Microsoft Windows Me or Windows 2000.

You can transfer files directly from your HP Jornada to compatible infrared-equipped printers, desktop PCs, or notebook PCs using the IrOBEX protocol.

To send a picture using the IrOBEX protocol

1. In Review mode, tap a thumbnail to select a picture.
2. On the **Send** menu, tap **IrOBEX**.
3. Align the infrared port on your HP Jornada with the infrared port on the receiving device.
4. Wait until the picture has been sent.



You can usually send a picture using IrOBEX or IrDA without removing the camera from the CompactFlash slot of your HP Jornada; however, if you have difficulty sending a picture, try removing the camera to make it easier to line up the infrared ports of the two devices.



If you cannot send a picture to a printer or other infrared equipped device, check the documentation for that device to ensure that it supports the IrDA or IrOBEX protocols.

Copying Pictures to Documents or Notes

You can use the clipboard on your HP Jornada to copy pictures from the Preview window to another file, such as a Pocket Word document or the Notes section of a contact, appointment, or task.

To copy a picture to a document


1. In Review mode, tap a thumbnail to select a picture.
2. On the **Edit** menu, tap **Copy** or tap **Resize and Copy** and then select a scale factor.
3. Open the document or note into which you want to paste the picture.
4. On the **Edit** menu, tap **Paste**.



The Notes section of a contact, appointment, or task has a maximum size limit of 64 KB. Pictures copied to the clipboard are stored uncompressed and may exceed this size limit. For a 640 x 320 picture, resize and copy to 12.5%. For a 320 x 240 picture, resize and copy to 25%. "Conserving Memory" in the "Viewing and Editing Pictures" section offers other tips for reducing the file size of your pictures.


Removing Your HP Pocket Camera

To remove the HP pocket camera, simply pull it out of the slot.

When the camera is removed, the viewfinder on your HP Jornada screen displays the  icon.

Store your pocket camera in its carrying pouch when you are not using it.



Do not remove the camera from your HP Jornada before camera has configured itself. Wait until the  icon disappears from the digital viewfinder or until the LED ring on the camera shines steady green before you remove the camera.

To exit the HP pocket camera software

- On the **View** menu, tap **Exit**.

Exiting the HP pocket camera software turns off power to the camera, even if the camera is still inserted in your HP Jornada. If you switch to another application on your HP Jornada while the HP pocket camera software is in Capture mode, you can still snap pictures by pressing the shutter button on the camera.



If you want to continue to use the camera after switching to another application, make sure you have not set the camera to suspend (see “Conserving Power” in the “Advanced Options” section).



If the digital viewfinder is running, other applications on your HP Jornada may run slowly. Change to Review mode or exit the HP pocket camera software to speed up the other applications.



To take a picture while you are running another application, first check that the LED ring on the camera shines steady green. If the LED is blinking slowly, press the shutter button on the camera once to wake the camera from Standby mode. Press the shutter button again to take a picture.

Tips for Taking Better Pictures

- When taking pictures of scenes with many fine details and many colors (for example, Christmas decorations), use better-quality settings like **Super Fine** or **Best**. For more information, see “Setting Picture Quality” in the “Features and Usage” section.
- When taking pictures of subjects where the background has bright lights, either frame the subject so that the bright lights do not appear in the picture, or use the Spot-Metering feature to move the spot-metering box onto the subject for correct exposure. For more information, see “Metering Options” in the “Features and Usage” section.
- When taking pictures indoors or in darker conditions, select **Slow** or **Night** for the exposure mode. If possible, rest the camera on a solid object to prevent it from shaking during longer exposure times. For more information, see “Adjusting Exposure” in the “Features and Usage” section.

- Change the **White Balance** setting to the appropriate type of lighting, or choose **None** under the following conditions:
 - Pictures taken with indoor lighting appear tinted (either bluish or yellowish).
 - The picture is composed of a uniform, primary color (for example, a close-up shot of lemons or oranges).
 - No white color is present in picture.

On the **View** menu, tap **Options**, and then tap **White Balance** on the **Advanced** tab.

- If you are not sure how your picture will turn out, take the same picture using different settings, and compare the results. The Camera Log feature helps you keep track of the exposure settings used for each picture. For more information, see “Camera Log” in the “Advanced Options” section.
- For close-up pictures (distances of 10 – 110 cm [4 – 46 in.]), use the digital viewfinder (on the screen of your HP Jornada) and turn the focus ring on the camera to get the best focus. The digital viewfinder displays subjects exactly as they will be captured by your HP pocket camera.
- For distant subjects (more than 110 cm [46 in.]), use the optical viewfinder on the camera itself. Turn the focus ring on the camera clockwise until it clicks into place.

Features and Usage

Besides simple “point-and-shoot” photography, your pocket camera includes many other features. This section describes the features that can help you take better or more creative pictures.

Features include:

- timer delay
- exposure mode settings
- picture quality settings
- picture size
- digital effects
- light meter

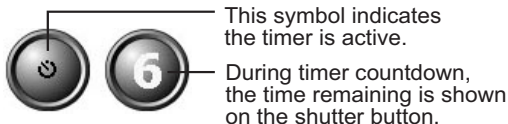
Using the Timer

The timer allows you to set a short delay before a picture is snapped. Use this feature when you want to be in your own pictures.

To set the timer

- On the **Timer** menu, select a delay of either 3 or 10 seconds.

When the timer is set, the shutter button displays the timer symbol.



When you have set a delay with the timer and you press the shutter button, the shutter button displays a countdown timer, your HP Jornada beeps, and the green LED ring on the camera blinks. During the last 2 seconds of the countdown, the beeping and blinking become faster.

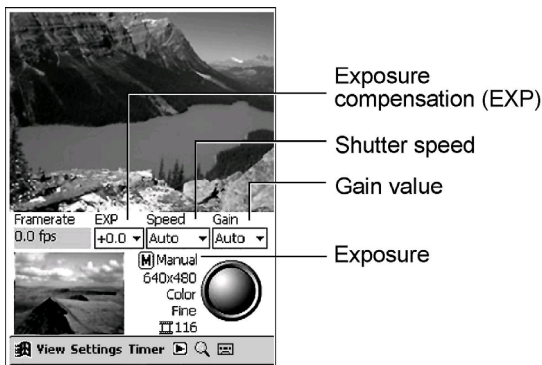
To cancel the timer

- Press the shutter button during the countdown.

Adjusting Exposure

The HP pocket camera software uses two settings (gain and shutter speed) to ensure the pictures you snap are not too dark or too light. If you snap a picture in dark conditions, a slower shutter speed allows the camera to capture more light. If you snap the same picture at a faster shutter speed, the camera compensates by using gain to amplify the existing light. Because increasing the gain can make your pictures look fuzzy or “washed out,” the software adjusts the shutter speed first, and then increases the gain value.

The Slow, Action, and Night exposure modes specify the minimum shutter speed. For example, if you take a picture outdoors on a cloudy day with the exposure mode set to Night, the software may slow the shutter speed to 1/20 second, while keeping the gain set at 1 (the optimum value). If you take the same picture with the exposure mode set to Action, the shutter speed must remain at 1/125 second, and the software may increase the gain to +10 or more to compensate for the limited light.



Select the best exposure mode for different subjects or lighting conditions according to suggestions below:

- **Auto mode.** Best for normal, hand-held shots. Slowest shutter speed 1/15 second.
- **Slow mode.** Best for darker, indoor shots. Slowest shutter speed 1/8 second.
- **Action mode.** Best for outdoor shots of moving subjects. Slowest shutter speed 1/125 second.
- **Night mode.** Best for very dark or night scenery and other low-light conditions. Slowest shutter speed 1/2 second.
- **Manual mode.** When you want full control of shutter speed and gain. Slowest shutter speed 1/2 second.

Note that at slower shutter speeds (greater than 1/15 second), it may be difficult to hold the camera steady. Place the camera on a solid surface if possible to ensure that the picture is not blurry.

To select an exposure mode

- In Capture mode, tap the mode setting on the display to cycle through all the mode settings.

—or—

On the **Settings** menu, tap **Mode**, and then select an exposure mode from the list.

Manual exposure mode offers the most precise control over capture settings. When the exposure mode is set to Manual, you can set exposure compensation (EXP), shutter speed, and gain by selecting values from the lists onscreen.

Setting Picture Quality

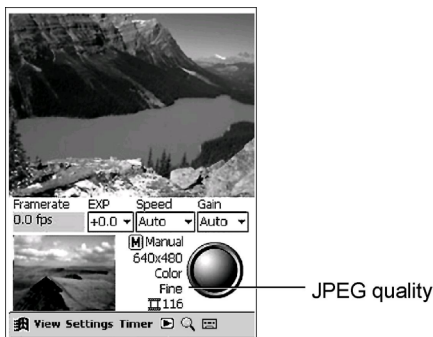
Choose from four quality settings for the pictures you snap. Higher-quality pictures look better, especially at greater magnification. Lower-quality pictures require less storage space on your HP Jornada, and may take less time when sending by e-mail or infrared.

The four quality settings are:

- Normal
- Fine (default)
- Super-Fine
- Best

To select the quality setting

- On the **Settings** menu, tap **Quality**, and select an option from the pop-up list.
—or—
Tap the JPEG quality display on the touch screen to cycle through the available settings.

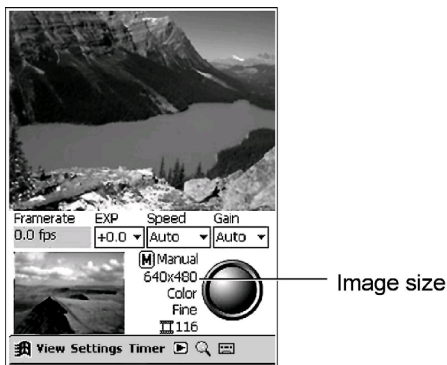


Choosing Picture Size

Choose from two sizes of picture: 320 x 240 pixels and 640 x 480 pixels (default size). The larger size (640 x 480) requires more storage space. It may also take longer to process and send.

To select a picture size

- On the **Settings** menu, tap **Size**, and select an option from the pop-up list.
—or—
Tap the size setting display on the touch screen to cycle through the available settings.

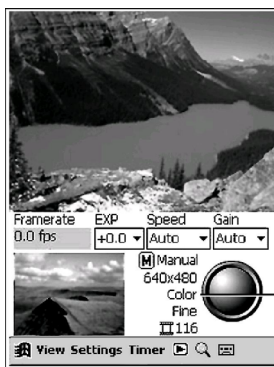


Applying Digital Effects

Choose from five different effects to give your pictures a different look:

- **Color.** (Default) Standard color output
- **B&W.** Grayscale image
- **Sepia.** Gives the image an old, faded look
- **Cool.** Gives the image a cool blue look
- **Negative.** Produces a color negative of the image taken

You must select an effect before you snap a picture. If you do not select an effect before taking a picture, the previous selection or the default effect (color) will be applied. Effects are applied to pictures when they are processed, but are not displayed in the viewfinder.



Selected digital effect

To select a digital effect

- On the **Settings** menu, tap **Effects**, and select an option from the pop-up list.
—or—
Tap the effect setting display on the touch screen to cycle through the available settings.



After using an effect, remember to set the effect back to your favorite setting. If you later snap a picture without looking at the display, or if you cannot see the display clearly, you may not notice that a different effect is selected.



Grayscale pictures result in smaller file sizes and require less storage space on your HP Jornada.



Picture color depends on your HP Jornada color display capability.

Metering Options

By default, the camera measures the brightness of the entire picture, with emphasis on the center. This is known as “center-weighted” metering. You can also use “spot” metering to correctly expose a specific part of the picture. Spot metering can be useful if the subject of a picture is much brighter or much darker than its surroundings, or if the subject is not centered in the frame.

To select metering options

1. On the **Settings** menu, tap **Metering**, and then tap **Spot** or **Center-Weighted**.
2. If you choose Spot metering, a green box displayed in the digital viewfinder represents the area that will be used to determine exposure settings. In the digital viewfinder, tap the area of the image on which you want to base the exposure settings.




Tapping the digital viewfinder to zoom in on a subject does not work when the camera is in spot-metering mode.

Viewing and Editing Pictures

Review mode allows you to view and edit your pictures.

To select Review mode

- On the **View** menu, tap **Review**.
—or—
Tap  on the Command bar.

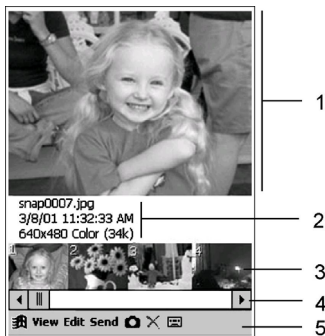
Viewing Pictures

You can view pictures on your HP Jornada in three ways:

- Preview window (default)
- Image Viewer
- Slideshow

The Preview Window

The Preview window shows the selected picture, or the last picture you snapped if you have switched from Capture mode. In addition to the Preview window, Review mode displays thumbnail views of the pictures in the current folder and information about the selected picture.



- 1. Preview window.** Displays the selected picture (If no picture is selected, the Preview window is blank.)
- 2. Picture information.** Displays the file name, capture date and time, quality, and size of the selected picture.
- 3. Thumbnails.** Tap a thumbnail of a picture to display it in the Preview window.
- 4. Scroll bar.** Tap to scroll forward or back through thumbnails.
- 5. Command bar.** Tap menus or icons to change modes, edit the selected picture, or send the picture by e-mail or infrared.



Tap the picture in the Preview window to switch to the Image Viewer and view the picture at actual size.

To display a picture in the Preview window

- Tap the thumbnail for the picture you want to display.
–or–
Rock the Action button to cycle through the pictures one by one.

By default, the Preview window displays pictures that are saved in the My Documents folder on your HP Jornada. You can display (and save) pictures in the My Documents folder or any subfolder you create in My Documents.

To view pictures in a different folder

1. On the **View** menu, tap **Options**, and then tap the **Filename** tab.
2. Under **Save/view pictures in folder**, select a folder from the drop-down list.



If you change the folder you are viewing, any new pictures that you take will be saved in the selected folder.

The Image Viewer

The Image Viewer allows you to view a picture on your HP Jornada screen at actual size.

To open the Image Viewer

- Tap the picture in the Preview window.
—or—
On the **View** menu, tap **Actual Size**.

To close the Image Viewer

- Tap **OK**.
—or—
Press the Action button.

If the picture is too large to fit on your HP Jornada screen, you can “pan” across the picture by dragging the stylus on the touch screen to display other parts of the picture. You can also pan up or down by rocking the Action button on your HP Jornada.

The Slideshow

In Slideshow mode, pictures are resized (and/or rotated) to fit the screen of your HP Jornada. You can choose whether the slideshow automatically displays the next picture in sequence after short delay, or whether you change the picture by rocking the Action button.

To start the slideshow

- On the **View** menu, tap **Slideshow**.
—or—
Press the Action button.

To stop the slideshow

- Press the Action button.
—or—
Tap the screen.



*Create a fun animation by snapping a sequence of pictures and playing them back with the slideshow feature. Set the slideshow options for a forward or reverse sequence with a short or zero delay. The animated motion is smoothest when the images have been captured at a size of 320x240. For best results when snapping pictures for an animation, set the exposure mode to **Manual** so that it does not vary from one frame to the next.*

To set slideshow options

1. On the **View** menu, tap **Options**, and then tap the **Slideshow** tab.
2. Select from the following slideshow options:
 - **Sequence.** To automatically play the slideshow, select the order in which you want pictures displayed: **Forward**, **Reverse**, or **Random**. To control the slideshow manually (by rocking the Action button to display the next picture), select **Off**.
 - **Delay.** Set the delay time (in seconds) you want the slideshow to wait before it automatically displays the next picture.
 - **Wrap around.** To repeat the slideshow after the final picture has been displayed, select the **Wrap around** check box. Clear the check box if you want the slideshow to stop after the last picture.
 - **Auto-rotate.** Select the **Auto-rotate** check box to rotate pictures if necessary to better fit the screen. Select either **Clockwise** or **Anti-clockwise** to determine the direction of rotation.
 - **Show filename and Show date.** Select **Show filename** and/or **Show date** to display information about the picture on the screen during the slideshow.
 - **Play audio.** Select **Play audio** to play any associated sound files when the picture is displayed.

Editing Pictures

In Review mode, you can rename pictures or move them to other folders, delete unwanted pictures, rotate pictures, record sounds with your pictures, and set options for storage.

Renaming a Picture File

When you snap a picture, a file name is automatically assigned to the picture file. You can rename individual files or set the software to number files sequentially using a prefix that you designate.

To rename a single picture file

1. In Review mode, tap a thumbnail to select the picture you want to rename. The current file name is displayed below the Preview window.
2. On the **Edit** menu, tap **Rename/Move**.
3. In the **Filename** box, enter a new name for the file. You do not need to include the file name extension (e.g., .jpg)

To set a file-naming convention for captured pictures

1. On the **View** menu, tap **Options**, and then tap the **Filename** tab.
2. In the **Filename prefix** box, enter a word or sequence of characters that you want to appear in all file names. For example, you could use the word “picture” to quickly identify picture files, or enter “august” to identify all pictures snapped during the month of August.
3. In the **Current counter value** box, enter a number. New images will be numbered sequentially beginning with the number you enter in the box.

Organizing Picture Files in Folders

By default, pictures are stored in the My Documents folder on your HP Jornada. To organize your pictures, you can create a subfolder in My Documents, for example, a folder called My Pictures.

To move a picture

1. In Review mode, tap a thumbnail to select the picture you want to move.
2. On the **Edit** menu, tap **Rename/Move**.
3. Under **Folder**, select the destination folder from the drop-down list.

To change the default folder where pictures are stored

1. On the **View** menu, tap **Options**, and then tap the **Filename** tab.
2. Under **Save/view pictures in folder**, select a folder from the drop-down list.

To delete a picture

1. In Review mode, select the picture you want to delete.
2. Tap the Delete button in the Command bar.
—or—
On the **Edit** menu, tap **Delete**.



*If you want to delete lots of pictures, you may find it easier to use the File Explorer. If you move, rename, or delete picture files using the File Explorer while the camera software is running in Review mode, tap **Refresh Thumbnails** on the **View** menu to update the displayed thumbnails.*

Rotating Pictures

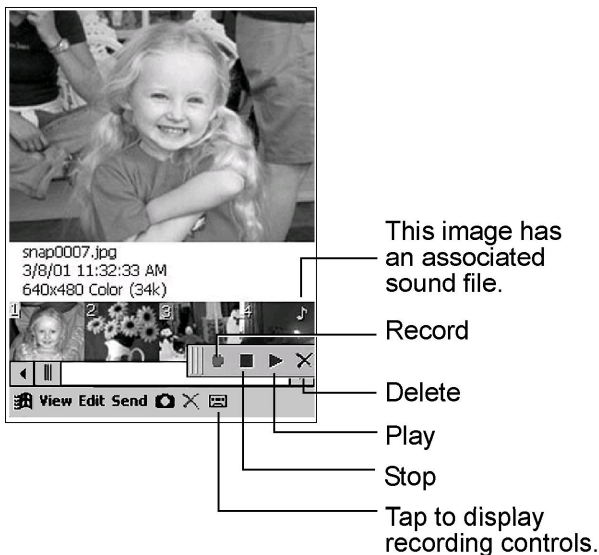
You can rotate pictures to ensure that they appear properly when they are displayed on your HP Jornada screen or copied to a note or document.

To rotate a picture

1. In Review mode, tap a thumbnail to select the picture.
2. On the **Edit** menu, tap **Rotate Anti-clockwise** or **Rotate Clockwise**.

Recording Sounds with Pictures


This feature can be used to associate simple voice recordings with your pictures. The voice recording feature is available in both Capture and Review modes.



To activate or de-activate the voice recording feature

- Tap  on the Command bar.

To record a voice recording

1. Tap  on the Command bar to activate the voice recording controls.
2. Tap the Record button, and speak into the microphone on your HP Jornada.
3. Tap the Stop button to stop recording.



Hold the microphone close to your mouth making a voice recording. For more information on recording techniques and formats, see your HP Jornada User's Guide.

The recording associated with the picture is stored as an 11-kHz, mono WAV file with the same name as the picture file it is associated with. Voice recordings created in Capture mode are associated with the last picture you snapped. Voice recordings created in Review mode are associated with the selected picture.

In Review mode, the thumbnail for a picture with an associated sound file is displayed with a musical note icon. Displaying the picture in the Preview window, the Image Viewer, or a slideshow also plays the associated sound.



You can also associate a prerecorded sound file with a picture by copying a WAV file to the folder the picture is saved in, and renaming the WAV file with the same file name as the picture file.



Sounds are clearer when played back through headphones. You must remove the HP pocket camera from the CompactFlash slot of your HP Jornada before inserting headphones into the headphone jack.

Conserving Memory

In general, larger, higher-quality pictures require more memory than pictures taken at a smaller size or lower quality.

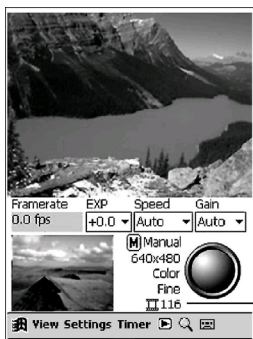
The table below shows the estimated average file size (in KB) for various settings:

Quality	320x240 pixels		640x480 pixels	
	Color	Gray-scale	Color	Gray-scale
Normal	12	8	36	30
Fine	18	12	55	46
Super Fine	27	18	86	74
Best	64	45	221	177



File sizes may vary significantly depending on the picture content and camera settings.

The HP pocket camera software keeps track of available storage memory and displays the approximate number of pictures that can be captured and stored using the current camera settings.



Number of images remaining
(based on current capture
settings and available memory).

To free up storage memory on your HP Jornada, you can transfer pictures from your HP Jornada to your desktop PC or to a CompactFlash card. For more information on transferring files from your HP Jornada to your desktop PC via ActiveSync or to a CompactFlash card, refer to your HP Jornada User's Guide.

Alternatively, you can also free up storage memory by deleting pictures from your HP Jornada. For information on deleting pictures, see "Organizing Pictures in Files and Folders" in the "Viewing and Editing Pictures" section.

Advanced Options

The following sections describe features and settings of the HP pocket camera software that will help you get the most from your HP pocket camera.

Conserving Power

The HP pocket camera draws power from your HP Jornada. You should take care to conserve power and to prevent your HP Jornada from running out of power. Typically, your fully charged HP Jornada will power the camera for up to 2 hours.

To save power, the pocket camera will turn off (suspend) after a period of inactivity. The camera will suspend at the same time as your HP Jornada, depending on the options you have set in the Power control panel. For information on setting your HP Jornada to suspend after a period of inactivity, refer to your HP Jornada User's Guide or online Help on your HP Jornada.

The HP pocket camera has two power-saving modes: Standby and Suspend.



Standby Mode

In Standby mode, the pocket camera uses less power. It enters Standby mode after a preset period of inactivity (that is, when you have not tapped the touch screen or taken any pictures). When the camera is in Standby mode, the green LED ring on the camera blinks slowly.



Suspend Mode

You can further conserve power by setting your camera to suspend when not in use. In Suspend mode, the pocket camera is off and does not use any power. When the camera is in Suspend mode, the green LED ring on the camera is not lit, and the shutter button on the pocket camera does not respond when you press it. By default, your camera will not suspend; you must set this option as described below.

To set the delay for Standby and Suspend modes

1. In Review mode, on the **View** menu, tap **Options**, and then tap the **Power** tab.
2. Select the delay times for Standby and Suspend modes from the drop-down lists.

To wake the camera from Standby mode

- Press the shutter button on the camera.
–or–
Tap the digital viewfinder.

The green LED ring on the camera shines steadily to indicate that the pocket camera is ready.

To wake the camera from Suspend mode

- Tap the shutter button on the screen of your HP Jornada.
–or–
Tap the digital viewfinder.

The green LED ring on the camera shines steadily to indicate that the camera is ready.



Your pocket camera uses power only when the HP pocket camera software is in Capture mode. You can save power by switching to Review mode or by closing the HP pocket camera software.

You can save power by disabling the LED ring on the camera and/or disabling sound playback features. “Capture-related” sounds are made by the HP pocket camera software in Capture mode, such as the shutter button sound and the timer-beeping sound. “Review-related” sounds are the voice recordings associated with pictures.

To set power-saving options

1. On the **View** menu, tap **Options**, and then tap the **Power** tab.
2. Clear the check boxes for **Enable LED**, **Enable Capture-related sounds**, and **Enable Review-related sounds**.

Displaying Detailed Onscreen Information

To display detailed information about the current picture

1. On the **View** menu, tap **Options**.
2. On the **Advanced** tab, select the **Display advanced information** check box.
3. In Capture mode, tap the information display to cycle through the available information:
 - **Framerate.** Displays the frame rate of the viewfinder in frames per second (fps). The value displayed is a 2-second average, and the first value shown may be inaccurate.
 - **Speed (Gain).** Shows the current shutter speed and gain.
 - **RGB value.** Displays the RGB value of the selected pixel, as indicated by the red crosshairs on the center of the screen. Tap the screen to move the spot-metering region and/or to zoom in or out.
 - **Timer.** Shows the time elapsed since Capture mode was activated, regardless of whether the camera has been running or not.
 - **Histogram.** Displays the RGB channels to determine if the picture has been exposed correctly. The histogram is also displayed for the selected picture in Review mode.



*You can modify the exposure value in Capture mode, even when you have selected an automatic exposure mode. On the **View** menu, tap **Options**, and then tap the **Advanced** tab. Select the **Display EXP setting** check box to display the EXP (exposure compensation) control.*

Camera Log

You can keep a log of the pictures you take, including the settings used (shutter speed, gain, metering mode, etc.) for each picture. The log can be helpful if you want to check the settings you used for a particular picture, or compare the results of different exposure settings. The log is stored as a text file called Camlog.txt in the My Documents folder.

To enable the camera log

1. On the **View** menu, tap **Options**, and then tap the **Advanced** tab.
2. Select the **Log capture information** check box.

To view the camera log

1. On the **View** menu, tap **Options**, and then tap the **Advanced** tab.
2. Tap **View Log**. The log file is opened in Pocket Word.

Troubleshooting and Support

This section presents solutions to some of the issues you may experience when using your pocket camera. If you have a problem that is not answered here, visit the HP Web site at www.hp.com/jornada for solutions to other common issues.

No image in digital viewfinder

- Is the HP pocket camera software running, and is it in Capture mode? The digital viewfinder is only active when the HP pocket camera software is running in Capture mode. To start the software, tap **Programs** on the **Start** menu, and then tap the HP pocket camera icon. To switch to Capture mode, tap **Capture** on the **View** menu.
- Have you installed the HP pocket camera software? You must install the software before you can use the camera. If you have restored your HP Jornada to the factory default settings, or lost power—thereby erasing all information on your HP Jornada—you will need to reinstall the software.
- Is something blocking the lens? Check to be sure your finger or another object is not in front of the lens and that the lens is not dirty or smudged.

HP pocket camera software does not start when you insert the camera

- Is the camera inserted properly? Be sure the camera is oriented properly and that it is firmly seated in the CompactFlash card slot. Remove and re-insert the camera. Wait for the LED to blink and then shine steady green. If the LED does not shine steady green after 2 or 3 seconds, remove the card and re-insert it again.

- Have you installed the HP pocket camera software? You must install the software before you can use the camera. If you have restored your HP Jornada to the factory default settings, or lost power—thereby erasing all information on your HP Jornada—you will need to reinstall the software.

Camera does not take a picture when you press the shutter button

- Was the pocket camera in Suspend or Standby mode? If the camera was in Standby mode, pressing the shutter button on the camera once will turn on the camera; you must press the shutter button a second time to snap a picture. If the camera was in Suspend mode, you must tap the onscreen shutter button in the HP pocket camera software to turn on the camera.
- Was the pocket camera ready? Be sure the LED ring on the pocket camera is shining steady green before you snap a picture. After you take a picture, you may need to wait a few moments for your HP Jornada to process and save the picture before you can take another one. (The green LED ring blinks rapidly while the camera is processing a picture.)
- Is the HP pocket camera software running? The software must be running in Capture mode before you can snap a picture. To start the software, tap **Programs** on the **Start** menu, and then tap the HP pocket camera icon.

Pictures are black

- Is something blocking the lens? Check to be sure your finger or another object is not in front of the lens, and that the lens is not dirty or smudged.

- Did you wait for the camera to set the exposure settings? The camera may take a few moments to set the exposure correctly, especially when you move from a dark place to a bright place, and vice versa. If you snap a picture before the camera has time to adjust the exposure, the picture may be too bright or too dark. Give the camera a few seconds to readjust the exposure settings before snapping a picture when moving between places with different lighting conditions.

Pictures are blurry

- Is the camera in focus? If the subject is at a distance of 110 cm (4 ft) or farther, turn the focus ring clockwise until it snaps into place. If the subject is closer, turn the focus ring until the image in the digital viewfinder is focused. You can also zoom in to help focus the image, and then zoom out again before taking the picture.
- Did you move the camera? It may be difficult to hold the camera steady, especially at slow shutter speeds (below 1/15 second). Try to place your HP Jornada on a solid surface before snapping the picture.
- Is the subject moving? To capture moving subjects, you will need a fast shutter speed. Set the exposure mode to Action, or adjust the exposure settings to obtain a faster shutter speed.

Cannot find pictures

- Are you looking in the right folder? The pocket camera stores pictures in the My Documents folder, or in any subfolder of My Documents. To see the folder that pictures are being stored in, tap **Options** on the **View** menu. The current folder is displayed on the **Filename** tab, under **Save/view pictures in folder**.



Caring for Your Pocket Camera

Do not drop your pocket camera, or subject it to hard knocks.

When you place your HP Jornada and pocket camera on a flat surface, be sure that the lens is not facing down. Resting the HP Jornada on the camera lens may damage the lens and place stress on the joints of the camera.

Do not use excessive force when handling the HP Pocket camera or when inserting or removing it from your HP Jornada. Align the CompactFlash interface of the camera carefully with the CompactFlash slot of your Jornada. Be sure the camera is oriented correctly before inserting it into the slot.

Use quality cleaning products designed for use on photographic lenses to keep your camera lens dirt- and smudge-free. Do not use excessive force on the lenses when cleaning to prevent damage to the lens.

Support

Each HP Jornada offers:

- 90 days warranty on accessories
- Phone support during the warranty period
- Electronic support services, available on the World Wide Web (<http://www.hp.com/jornada>)

Refer to your HP Jornada User's Guide for information on the HP worldwide customer support network.

Glossary

Capture-related sounds. Sounds made by the HP pocket camera software in Capture mode, such as the shutter button sound and the timer-beeping sound. You can save power by disabling these sounds, as well as **review-related sounds**.

Center-weighted metering. The default method used by the camera to measure the brightness of a picture. Exposure settings are based on the brightness at the center of the picture.

Digital effects. Special effects applied to a picture when it is processed. The effect—black and white (grayscale), negative, “cool,” or sepia-toned—is applied after you snap the picture, and is not displayed in the viewfinder.

Exposure compensation (EXP). A setting that allows you to manually correct scenes that are too dark or bright. Exposure values range from +0.0 to +2.0. Setting a higher EXP value makes the picture brighter; a lower EXP makes the picture darker.

Gain. The amount of brightness applied by the camera to compensate for low-light conditions. The gain value ranges from 1 to 25. For best picture quality, the gain value should be as low as possible.

Panning. A method used to view the areas of an actual-size picture that don't fit in the Image Viewer. Drag the stylus on the touch screen to display other parts of the picture, or pan up or down by rocking the Action button on your HP Jornada.

Review-related sounds. The voice recordings associated with pictures. You can save power by disabling these sounds, as well as **capture-related sounds**.

RGB (red/green/blue) value. Color value of a pixel. You can identify the RGB value of a pixel in the advanced information display in Capture mode. You can also display a histogram of values for all RGB channels in a picture.

Shutter speed. The length of exposure time for the picture. Darker conditions require slower shutter speeds, while moving subjects require faster shutter speeds. The shutter speed on your HP pocket camera ranges from 1/2 second (slowest) to 1/8000 second (fastest).

Spot metering. A way to override **center-weighted metering**, the camera's default method of measuring the brightness of a picture. Use spot metering to identify the part of a picture that you want the light meter to use to calculate exposure—for example, if the subject of a picture is much brighter or much darker than its surroundings, or if the subject is not centered in the frame.

Index

A

ActiveSync..... 13, 42
attachments .. See sending pictures

B

black-and-white picture
effect 27

C

camera
 carrying pouch.... 2, 17
 cleaning the lens..... 52
 focus ring...3, 4, 20, 51
 green LED ring . 3. See also status
 inserting into HP
 Jornada...3, 7, 10, 49
 lens3, 7, 49, 50, 52
 optical viewfinder . 3, 8, 10, 20, 46
 protecting7, 17, 52
 removing from HP
 Jornada..... 17
 shutter button .3, 8, 17, 18, 44, 50
 software..... See pocket camera software
 status..... See status
 storing 17
Capture mode timer 46
capture-related sounds
 45, **53**

capturing pictures See snapping pictures
center-weighted metering
 See light meter
CompactFlash card 42, 49
cool picture effect27

D

delay timer
 canceling.....22
 countdown.....22
 setting22
deleting pictures37, 42
displaying pictures..... See viewing pictures
documents, adding
 pictures to 16

E

exposure See also snapping pictures
 EXP setting . 24, 46, **53**
 gain . 23, 24, 46, 47, **53**
 log of settings20, 47
 low light 19, 23, 24
 manually adjusting .24, 46, 51
 settings9, 51
 shutter speed ...23, 24, 46, 47, 51, **54**
 spot metering ... 19, 29, 46, **54**
exposure mode
 Action..... 23, 24, 51

- Auto..... 24
 - Manual 24
 - Night..... 23, 24
 - selecting 24
 - Slow 19, 23, 24
- F**
- File Explorer 37
 - file-naming convention for pictures..... 36
 - frame rate of viewfinder 46
- G**
- gain..... 23, 24, 46, 47, **53**
 - grayscale picture effect 27, 28, 41
- H**
- headphones..... 40
 - histogram of RGB channels..... 46
- I**
- Image Viewer..... 31, 33
 - infrared See sending pictures
 - installing software See pocket camera software
 - IrDA protocol..... 14, 15
 - IrOBEX protocol..... 15
- L**
- lens..... 3, 7, 49, 50, 52
 - cleaning 52
- light meter
 - center-weighted metering 29, **53**
 - spot metering ... 19, 29, 46, **54**
 - lighting
 - bluish 20
 - indoor 19, 20, 24
 - low light. 10, 19, 23, 24
 - moving between dark and light..... 51
 - night 24
 - outdoor..... 23, 24
 - white 20
 - yellowish 20
 - log of camera settings
 - about 20
 - enabling 47
 - file name of 47
 - viewing 47
- M**
- memory
 - conserving.. 18, 28, 41, 42
 - effect of quality setting on 41
 - typical picture file sizes 41
 - My Documents folder... 32, 37, 47, 51
- N**
- negative picture effect .. 27
 - Notes
 - adding pictures to.... 16
 - file size limitation 16

P

photo imaging program .. 2

picture file size

determining..... 41

reducing 16

smaller file size for

grayscale 28

typical file sizes..... 41

picture problems

black..... 50

blue tint..... 20

blurry 10, 24, 51

bright background.. 19,
29

cannot find..... 51

fuzzy..... 23

no picture taken..... 50

no preview 49

washed out..... 23

yellow tint 20

picture quality setting

Best..... 25

effect on file size..... 41

Fine 25

Normal..... 25

selecting 19, 25

Super-Fine..... 25

picture size

dimensions 26

selecting 26

pictures *See also* snapping

pictures

adding to documents

..... 16

adding to Notes 16

associating sound files

with 40

browsing 11

deleting 37, 42

displaying. *See* viewing

pictures

file-naming convention

for 36

log of settings for..... 20,
47

moving 37

printing 15

renaming 36

rotating..... 35, 38

sending in e-mail..... 13

sending via infrared 14,
15

storing in folders 37, 51

transferring..... 42

pocket camera software

exiting 17, 45

installing... 2, 5, 10, 49,
50

reinstalling..... 5, 49, 50

troubleshooting..... 49

power ... *See also* Standby

mode, Suspend mode

conserving... 43, 44, 45

setting options..... 45

turning off by exiting

software..... 17

Preview window 12, 31, 32

printing pictures 15

R

reinstalling software... *See*

pocket camera

software

review-related sounds. 45,

53

RGB value

defined 53

histogram 46

of a pixel 46

S

sending pictures

in e-mail 13

via infrared 15

sepia-toned picture effect

..... 27

shutter button

on camera 3, 8, 17, 18,
44, 50

on touch screen ... 8, 9,
22

shutter speed ... 23, 24, 46,

47, 51, **54**

slideshow

delay 35

displaying info during
..... 35

loop 35

playing sound files

during 35

rotating pictures for. 35

sequence 35

starting 34

stopping 34

snapping pictures

adjusting exposure 19,
23, 24, 29, 46, 51

applying special effects
..... 27, 28, **53**

at night 24

camera ready for? .. 10,
51

focusing 3, 4, 20, 51

in low light ... 10, 19, 24

indoors 19, 20, 24

of bright backgrounds
..... 19

of close-up subjects.. 3,
4, 20, 51

of colorful scenes 19

of detailed scenes ... 19

of distant subjects 3, 4,
8, 10, 51

of fast-moving subjects
..... 24, 51

of yourself with delay
timer 22

outdoors 23, 24

using digital viewfinder
..... 8

using optical viewfinder
..... 8, 10

zooming .. 9, 10, 29, 51

software See pocket
camera software

sound files

associating with

pictures 40

disabling playback to
save power 45

file type 40

microphone 40

playing 40

playing during
slideshow 35

playing through
headphones 40

- recording 39, 40
- spot-metering.....*See* light meter
- Standby mode
 - about 44
 - canceling 45, 50
 - setting delay 44
 - waking from 45
- status (green LED ring)
 - blinking 3, 8, 22, 44, 50
 - off 3, 44
 - shining steadily 3, 7, 10, 17, 18, 45, 49, 50
- Suspend mode
 - about 43, 44
 - canceling 17, 45, 50
 - setting delay 44
 - waking from 45

T

- taking pictures *See* snapping pictures
- timer ... *See* Capture mode timer or delay timer
- transferring pictures 15, 42
- troubleshooting..... *See* picture problems

V

- viewing pictures
 - at actual size 31, 33
 - changing default folder for 32
 - in a slideshow 34
 - in Image Viewer 31, 33
 - in Preview window.. 12, 31, 32

