
HP LaserJet 5 Printer

Getting Started Guide *Printer Setup*

© Copyright Hewlett-Packard
Company 1996

All Rights Reserved.
Reproduction, adaptation, or
translation without prior written
permission is prohibited, except
as allowed under the copyright
laws.

Publication number
C3916-90919

First edition, April 1996

Warranty

The information contained in
this document is subject to
change without notice.

**Hewlett-Packard makes no
warranty of any kind with
regard to this material,
including, but not limited to,
the implied warranties or
merchantability and fitness for
a particular purpose.**

Hewlett-Packard shall not be
liable for errors contained herein
or for incidental or consequential
damaged in connection with the
furnishing, performance, or use
of this material.

Installation Checklist

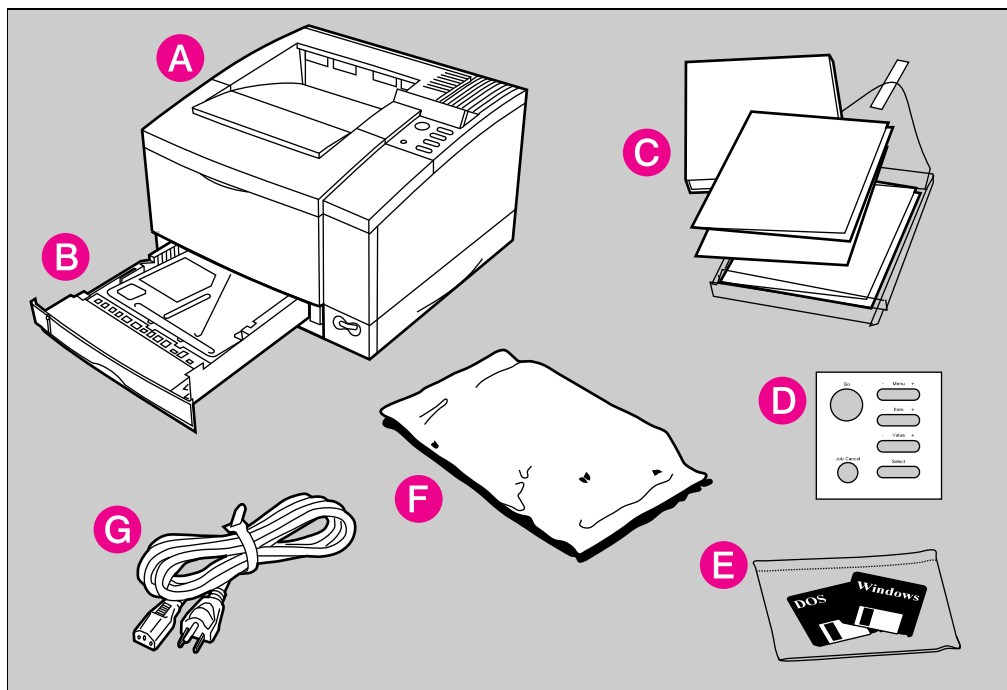
Congratulations on your purchase of the HP LaserJet 5 Printer!

This *Getting Started Guide* will help you set up and install your new printer. Complete, in order, the steps in the checklist. Each step is detailed on the following pages with easy-to-follow directions.

- | **Installation Checklist**
- Step 1. Check the package contents. Page 2
- Step 2. Remove the internal packaging. Page 3
- Step 3. Prepare a location for the printer. Page 5
- Step 4. Locate the printer parts. Page 6
- Step 5. Install the toner cartridge. Page 9
- Step 6. Load paper into Tray 2. Page 10
- Step 7. Load paper into Tray 1. Page 11
- Step 8. Attach the power cord. Page 12
- Step 9. Change the language (optional). Page 13
- Step 10. Test the printer operation. Page 14
- Step 11. Select a printer interface and cable. Page 15
- Step 12. Attach a cable. Page 17
- Step 13. Install the printing software. Page 18
- Step 14. Test printer to verify setup is complete. Page 20

A list of common questions is located at the back of this guide for help in problem solving with printer and software setup.

Step 1. Check the Package Contents



Locate each item listed below:

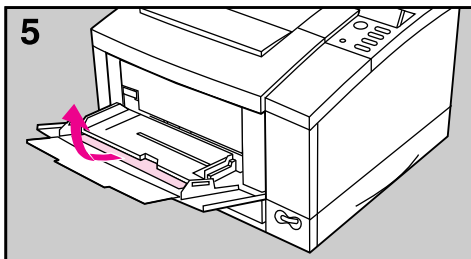
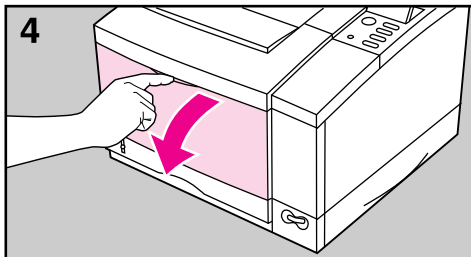
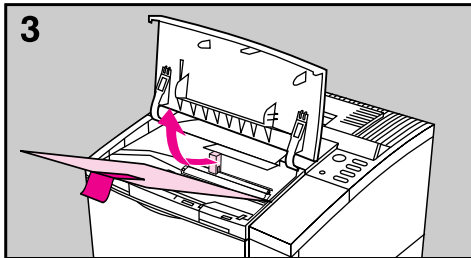
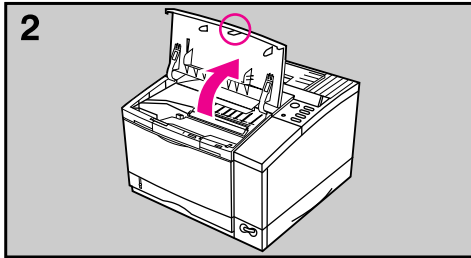
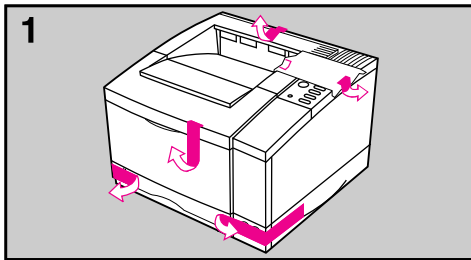
- A HP LaserJet 5 printer
- B Tray 2
- C Documentation package (containing the *Getting Started Guide*, *User's Manual*, and other useful documentation)
- D A Control Panel Overlay translated to your language (outside U.S. and Canada only)
- E Printer Software
- F Toner Cartridge (inside protective bag)
- G Power cord

Note

A parallel cable is not included in the package contents. See Chapter 1 of the printer *User's Manual* for ordering information.

If you need 5.25 inch software disks, refer to "Printer Drivers by Mail" located on the HP Support pages in the front of the printer *User's Manual*.

Step 2. Remove the Internal Packaging

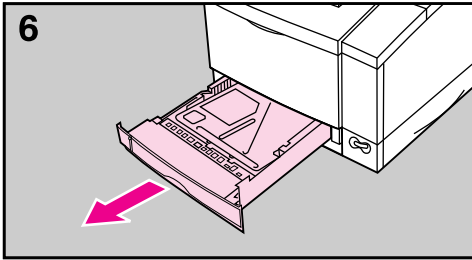


Note

Save all packing material. You may need to repack your printer at a later date.

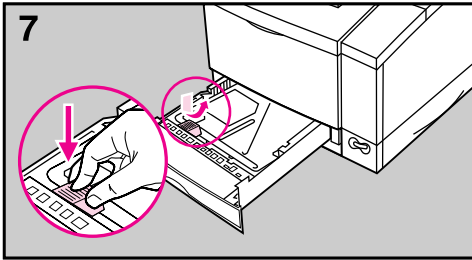
- 1 Remove the shipping bag and tape from the printer.
- 2 Open the printer by lifting up the front of the top door.
- 3 Remove the cardboard and foam packing pieces from inside the printer.
- 4 Open Tray 1 by pulling down on the top center of the door.
- 5 Remove the cardboard from inside Tray 1.

Continued on next page.

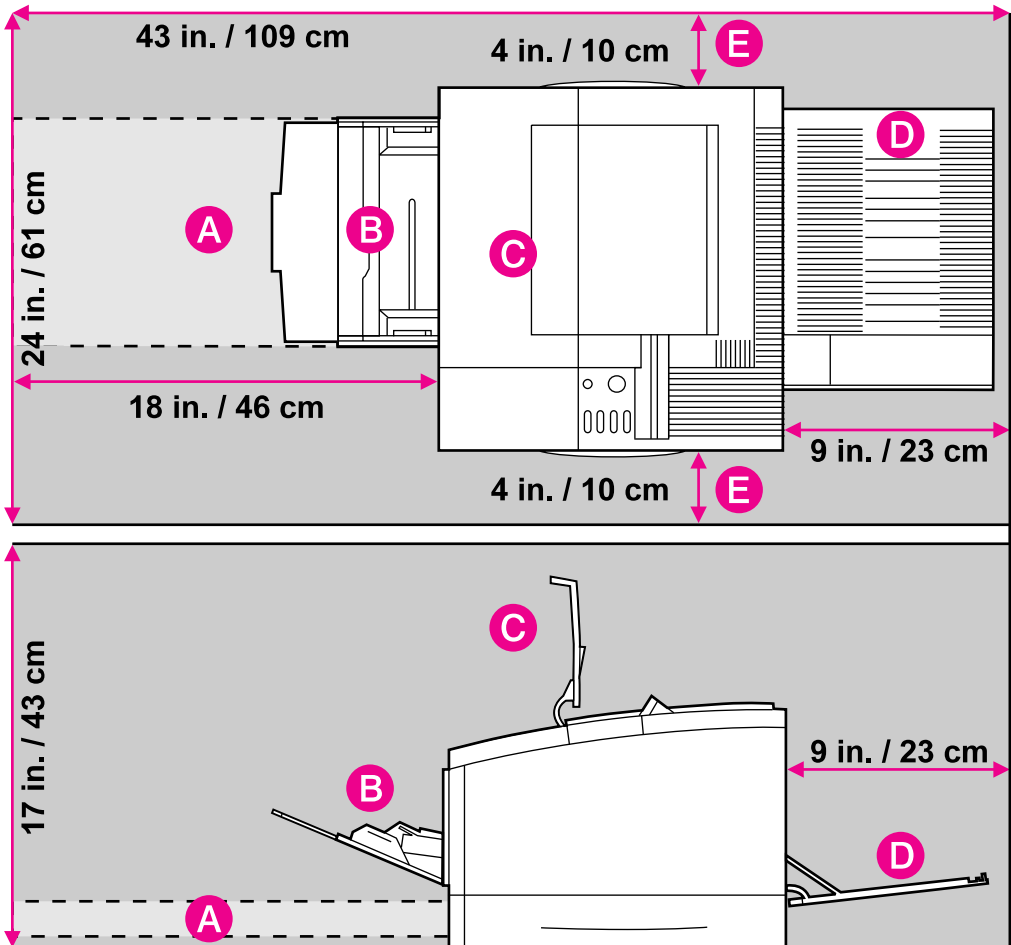


6 Slide Tray 2 out of the printer.

7 Remove the packing material from inside Tray 2 (press down on the orange plastic piece and pull it straight out).



Step 3. Prepare a Location for the Printer

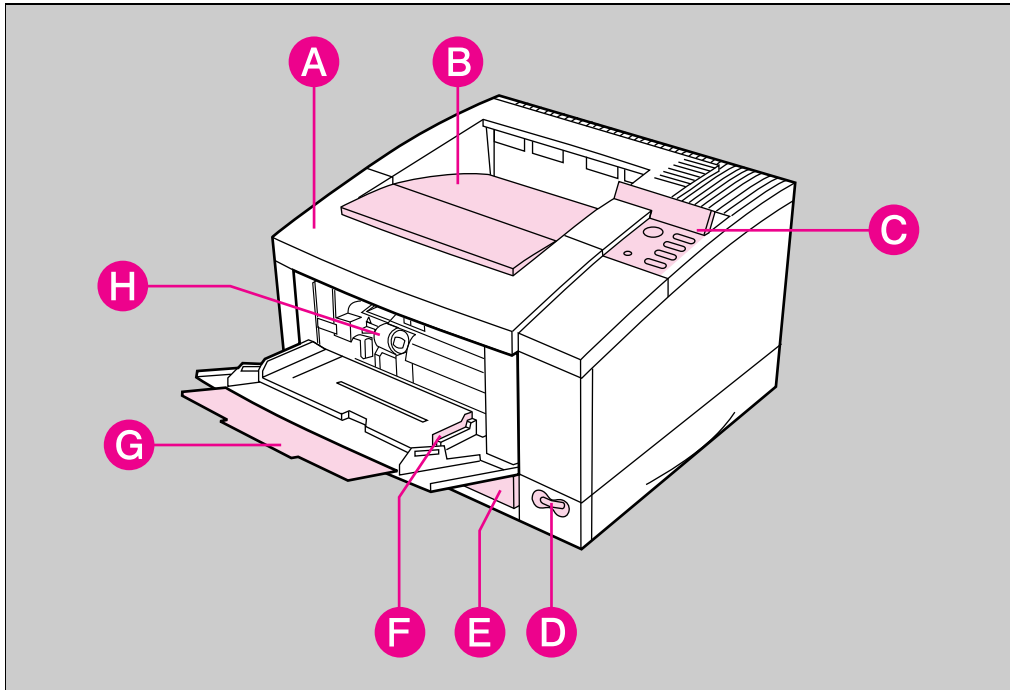


Location Requirements for your Printer

- A sturdy, level surface for placement
- Adequate space for:
 - (A) opening Tray 2
 - (B) opening Tray 1
 - (C) opening the top door
 - (D) opening the rear door
 - (E) allowing air circulation
- A well-ventilated room
- No exposure to direct sunlight or chemicals
- Adequate power supply (see your *User's Manual*)
- A stable environment— no abrupt temperature or humidity changes
- Relative humidity 20% to 80%
- Room temperature 50° to 91° F (10° to 32.5° C)

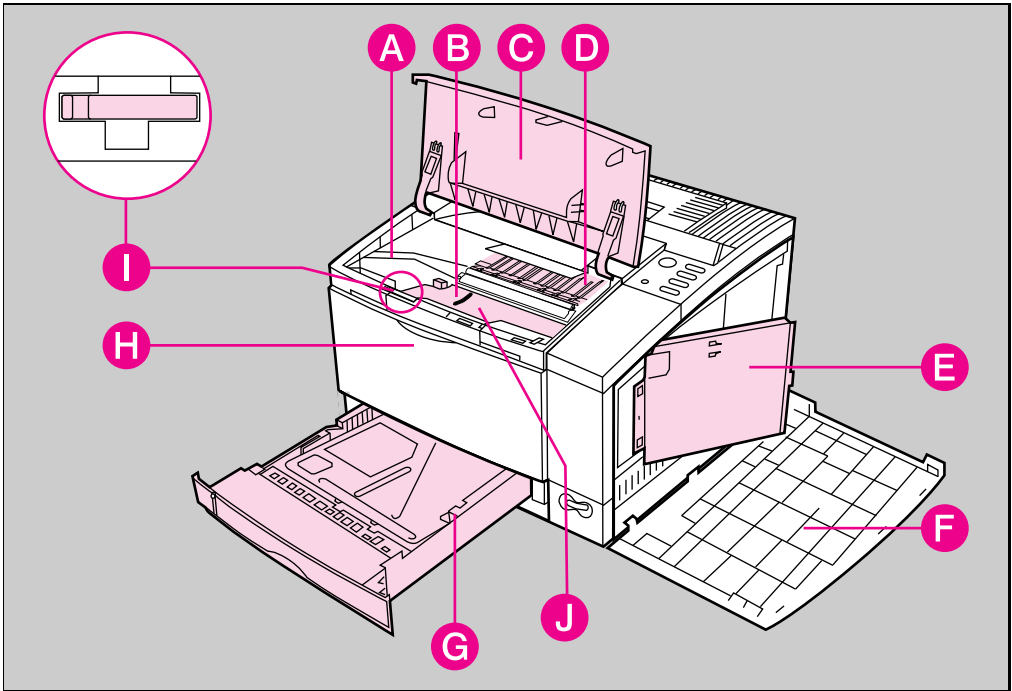
Step 4. Locate the Printer Parts

The following illustrations give the location and names of the key printer parts.



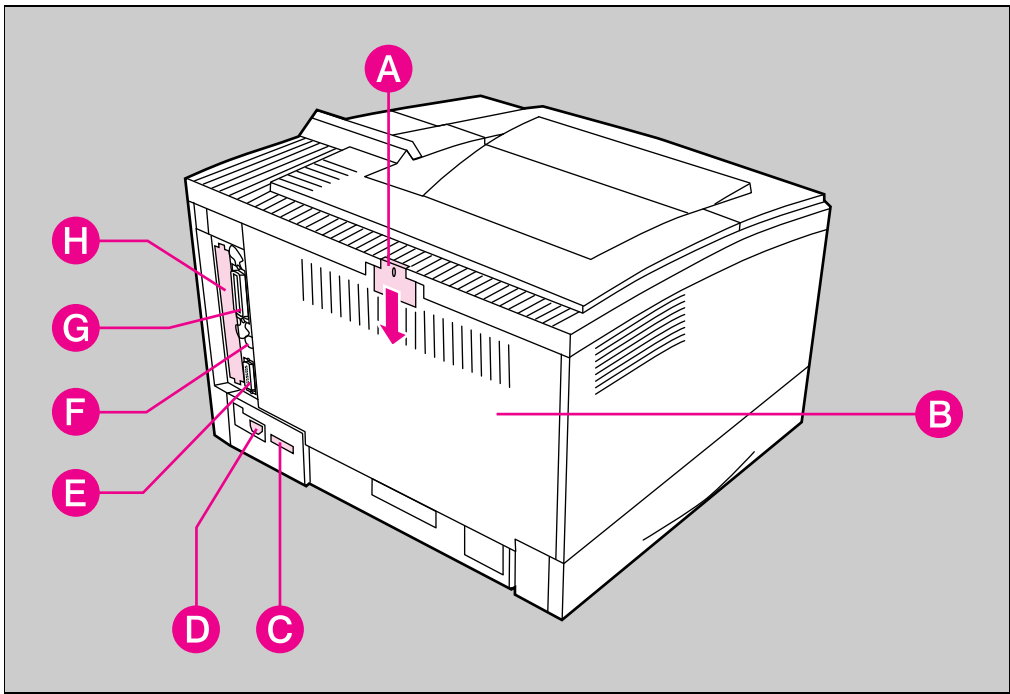
Front/right side view (with Tray 1 open)

- | | |
|------------------------------------|--|
| A Top door | E 250-sheet Tray 2 |
| B Output bin | F Tray 1 paper width guide |
| C Control panel and display | G Tray 1 and extension |
| D ON/OFF power switch | H Envelope Feeder access cover location
(shown with cover removed) |



Top/right side view with top door open and toner cartridge removed

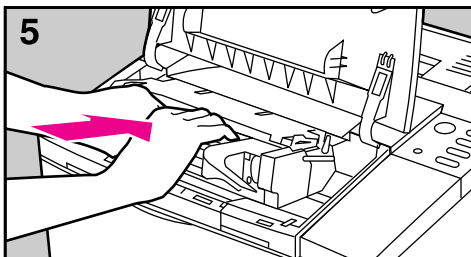
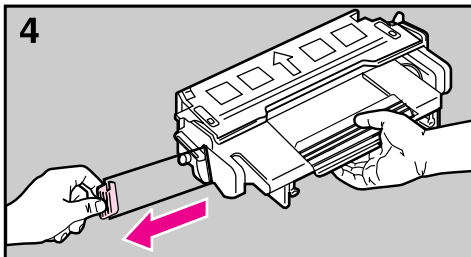
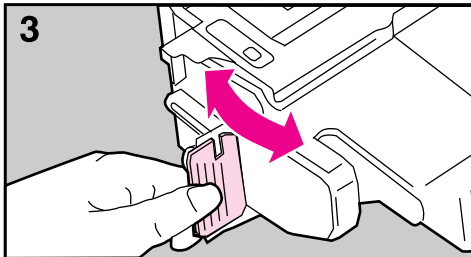
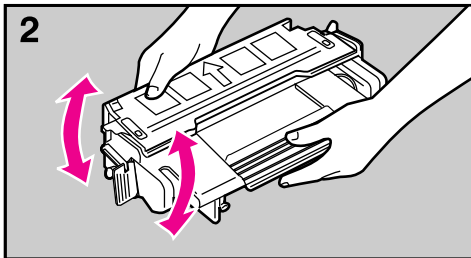
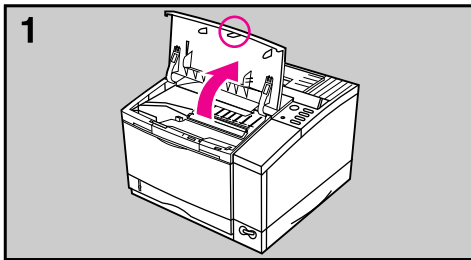
- | | |
|---|--|
| A Toner cartridge guides | F Right side cover (opened) |
| B Paper access door
(for paper jam removal) | G 250-sheet Tray 2 |
| C Top door (opened) | H Tray 1 release point (pull to open) |
| D Toner cartridge location
(shown with cartridge removed) | I Transfer Roller removal tool |
| E SIMM slots access door | J Serial Number label |



Rear/left side view

- | | |
|---|---|
| A Rear access cover latch
(Press down to release) | E Serial port |
| B Rear access cover | F Serial Infrared port
(HP IR Adapter Required) |
| C Serial number label | G Parallel port |
| D Power cable connector | H I/O (MIO) slot |

Step 5. Install the Toner Cartridge



- 1 Open the printer by lifting up the front of the top door. Remove the toner cartridge from its bag and save the packaging for possible cartridge storage.
- 2 Shake the cartridge to distribute the toner evenly inside the cartridge. Avoid tipping the cartridge on end.
- 3 Locate the sealing tape tab on the left end of the cartridge. Carefully bend the tab back and forth until it separates from the cartridge.
- 4 Pull the tab firmly to remove the entire length of the tape (22 in. / 56 cm). Avoid touching any black on the tape (this is loose toner).

Note

If the tab breaks, grasp the tape and pull it out of the cartridge.

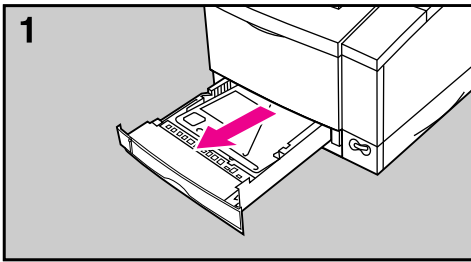
If toner gets on your clothing, wipe it off with a dry cloth and wash clothing in **cold** water.

- 5 Position the cartridge with the arrow facing into the printer. Slide the cartridge in until it clicks into place. Close the door.

Note

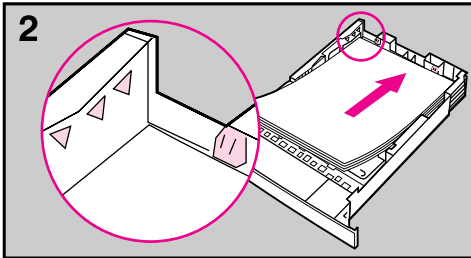
If the top door does not close, the cartridge is not installed correctly. Remove and reinstall the cartridge.

Step 6. Load Paper into Tray 2

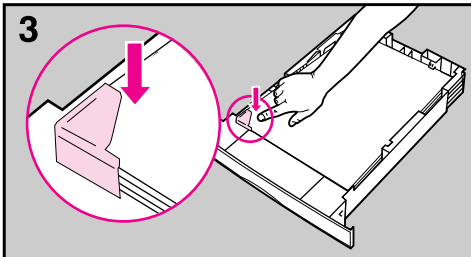


Tray 2 holds about 250 sheets of 20# (75g/m²) paper.

- 1 Slide Tray 2 out of the printer.
- 2 Load up to 250 sheets of paper into the tray. Do not fill above the arrows on the left rear. Keep the paper below the tabs in the rear of the tray.



- 3 Make sure that the paper is flat in the tray at all four corners. The paper should fit under the front left metal holder.



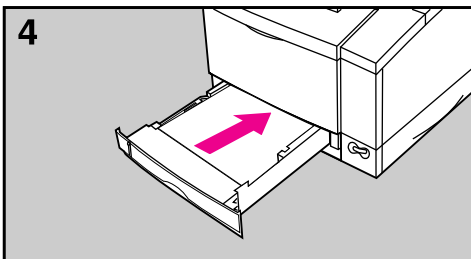
- 4 Slide Tray 2 back into the printer.

Note

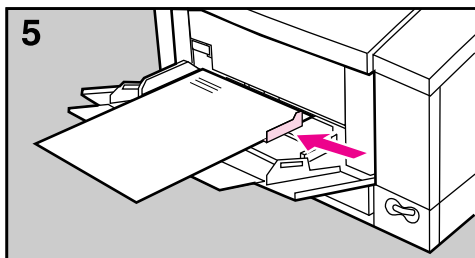
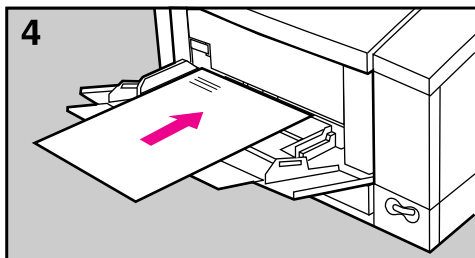
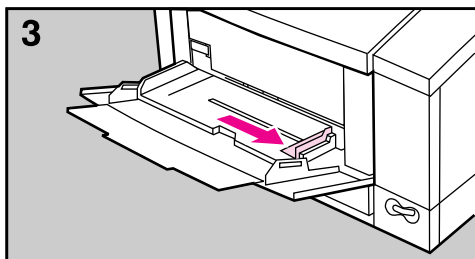
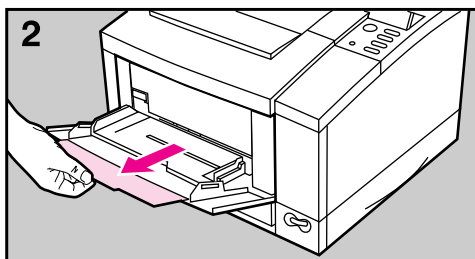
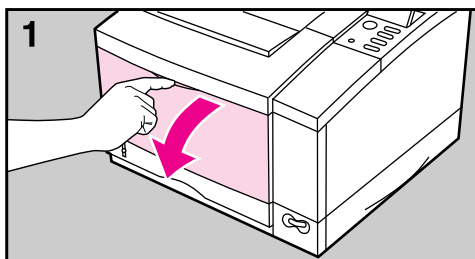
See the sections on letterhead and duplex printing in Chapter 4 of the *User's Manual* for proper media orientation for specific jobs.

Caution

Do not remove the tray while the printer is printing. This could cause a paper jam.



Step 7. Load Paper into Tray 1



Tray 1 allows you to automatically feed up to 100 sheets of paper or manually feed one sheet at a time. Tray 1 can be used for standard and odd-sized papers, envelopes, labels, and transparencies.

To load Tray 1:

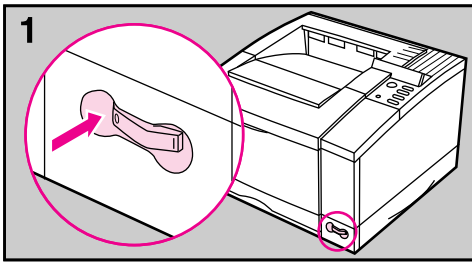
- 1 Open Tray 1 by pulling down on the top center of the door.
- 2 Pull out the tray extension until it clicks into place.
- 3 Slide the paper width guide to the far right side of the tray.
- 4 Place paper in the tray. The paper should be flush left, under the arrows on the paper guide tabs.

Note

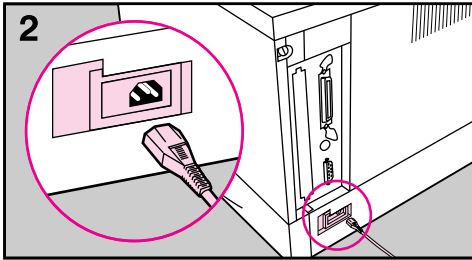
See the sections on letterhead, envelope, and duplex printing in Chapter 4 of the *User's Manual* for proper media orientation for specific jobs.

- 5 If necessary, slide the paper width guide to the left until it lightly touches the stack of paper without bending the paper.

Step 8. Attach the Power Cord

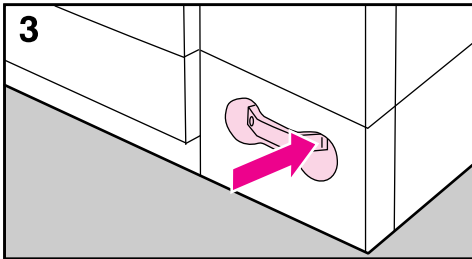


1 Locate the power switch on the front of the printer. Make sure the power switch is off (O).



2 Connect the power cord between the printer and a grounded power strip or an AC outlet.

3 Switch the printer on (I).

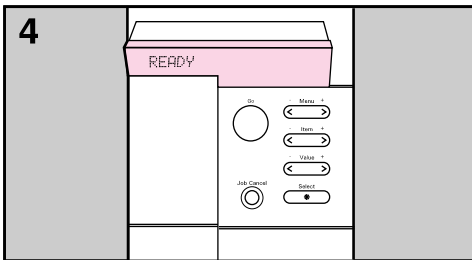


4 After the printer warms up, the display will read **READY**.

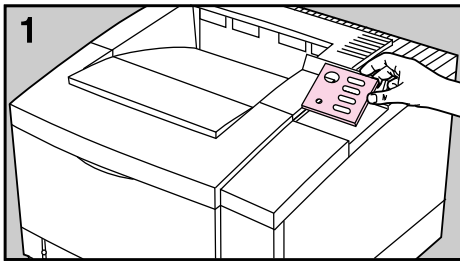
Note

The printer automatically switches to a PowerSave mode after 30 minutes of inactivity. (PowerSave is an adjustable/optional setting. Refer to Chapter 8 in the *User's Manual* for instructions on changing the time setting or turning PowerSave off.) If the display reads **POWERSAVE ON**, press **Go** to return to the **READY** message.

If the printer displays an error message, see Chapter 7 of the *User's Manual*.

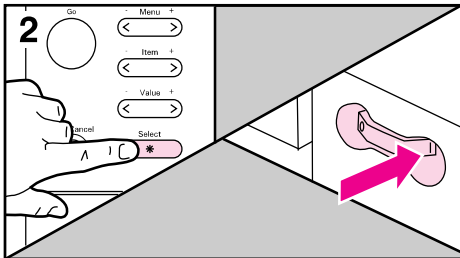


Step 9. Change the Language (optional)



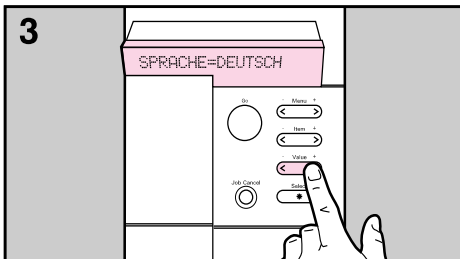
Follow these steps to change the control panel language from English to a language of your choice.

- 1 Switch the printer off (O). Place the Control Panel Overlay (translated to your language) onto the control panel and snap into place.



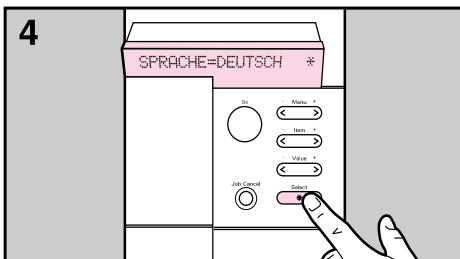
- 2 Hold down **Select** while switching the printer on (I).

The message, CONFIG LANGUAGE, briefly appears in the display. After completing a self test the printer will display LANG=ENGLISH.

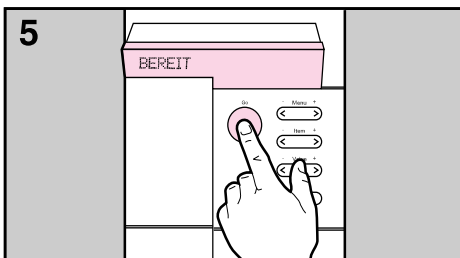


- 3 Press **- Value +** to scroll through the available display languages.

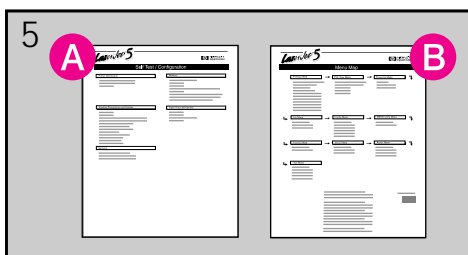
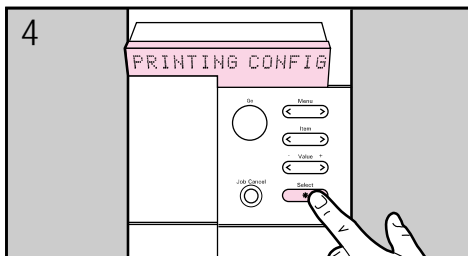
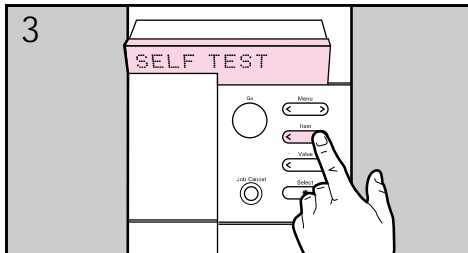
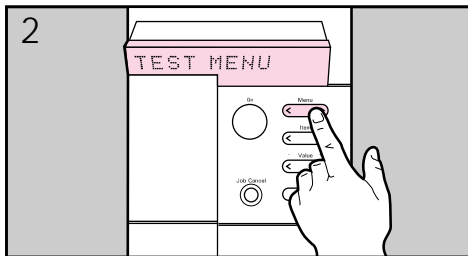
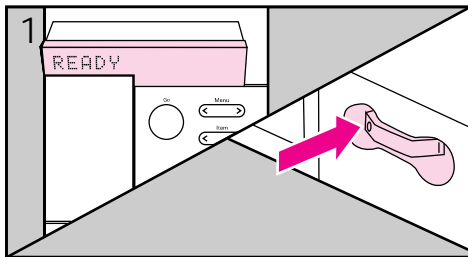
- 4 Press **Select** save your display language as the new default. An asterisk will appear in the right side of the display.



- 5 Press **Go** to return to a READY display message.



Step 10. Test the Printer Operation



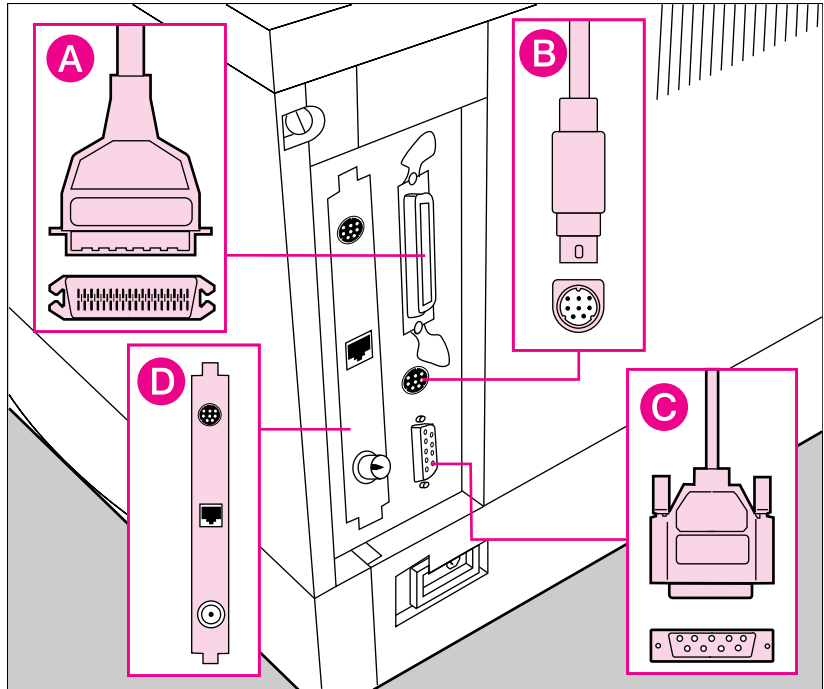
Print a configuration page (also known as self test) and menu map to make sure your printer is operating correctly.

- 1 Make sure the printer is on and the **READY** message is displayed.
- 2 Press **Menu** until the display reads **TEST MENU**.
- 3 Press **Item** until the display reads **SELF TEST**.
- 4 Press **Select** to print. The display will scroll the message **PRINTING CONFIGURATION PAGE**.
- 5 The configuration page (**A**) shows how your printer is configured. The menu map (**B**) is a useful reference for locating menu items.

Step 11. Select a Printer Interface and Cable

The HP LaserJet 5 printer supports three different interface connections: Parallel (A), Serial (C), and an IrDA serial infrared (B). An MIO slot (D) is provided for adding an optional HP JetDirect (or compatible) card. JetDirect is used to directly connect printers with a network.

Figure 1-1



Parallel Port (A)

The IEEE-1284 standard parallel port (compatible with Bi-Tronics parallel and Centronics parallel) provides enhanced capabilities, such as bi-directional communication between the computer and printer, and faster transmission of data.

Use the parallel interface when you:

- Want the fastest transfer of data to your printer.
- Send a lot of graphic information or soft fonts to the printer.
- Position your printer less than 10 feet (3 meters) from your computer.

Note

For best results use a high quality IEEE-1284 compliant parallel cable. See Chapter 1 of the *User's Manual* for ordering information.

Serial (9-pin) Port (C)

The printer supports a 9-pin RS-232C serial interface. Serial interfaces provide increased flexibility in locating the printer, but are generally slower than parallel interfaces.

Use a serial interface when you:

- Have a computer that does not have an available parallel interface.
- Have a printer that is positioned more than 10 feet (3 m) from your computer. (The RS-232C serial interface can support printers located up to 50 feet away.)
- Are using a serial printer-sharing device.

IrDA Serial Infrared Port (B)

The printer supports an 8-pin “wireless” infrared serial interface. An optional HP IR Adapter must be purchased separately. (See Chapter 1 of the *User’s Manual* for ordering information.)

Use an Infrared interface when:

- Your portable equipment (like a laptop or notebook computer) is equipped with an infrared transmitter.

See Chapter 4 of the *User’s Manual* for further information on the optional HP infrared adapter.

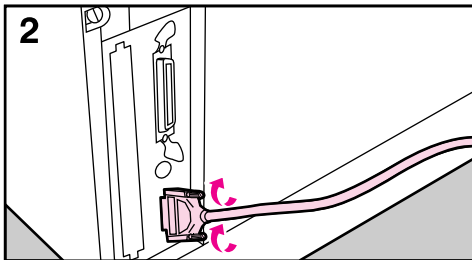
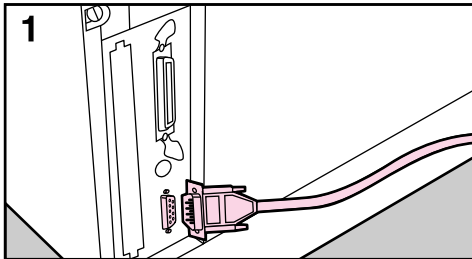
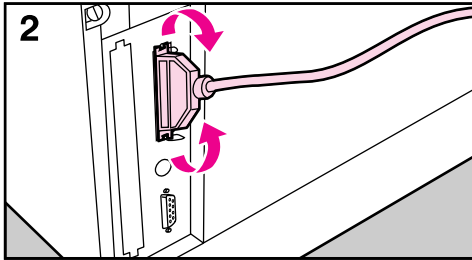
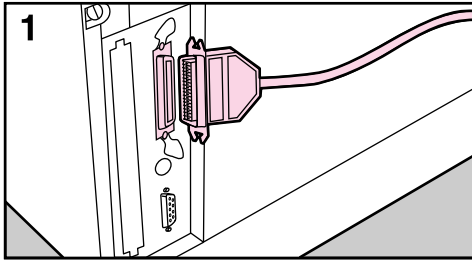
MIO Slot (D)

The printer comes with an MIO slot designed to support optional HP JetDirect cards or compatible MIO cards from other companies. (See Chapter 1 of the *User’s Manual* for ordering information.)

Use a JetDirect card when:

- The printer is used as a network printer.
- Multiple network operating systems and/or protocols are using the printer at the same time.

Step 12. Attach a Cable



Note

Make sure your computer and printer are switched off (O) before attaching a cable.

Be careful to install cables securely and right side up.

To Install a Bi-Tronics Parallel Cable

- 1 Plug the cable into both the computer and printer ports.
- 2 Use the wire clips to attach the cable to your printer.

Switch your computer and printer on (I).

To Install a Serial Cable:

- 1 Plug the cable into both the computer and printer ports.
- 2 Secure the cable screws.

Switch your computer and printer on (I).

Note

For serial cable installation, baud rate, pacing, and DTR polarity need to be set from the control panel. See Appendix E of the *User's Manual* for more information.

Step 13. Install the Printing Software

Before you use this printer with your software applications, **you must install printing software.** (Please review the “HP Software Product License” in Appendix F of the *User’s Manual*.) For more information on software components see Chapter 2 of the *User’s Manual*.

Note

If you use DOS programs also, see the following page.

Installing the MS Windows Printing System

The installation program for the MS Windows Printing System will install all of the components needed for printing in a MS Windows environment (version 3.1 and later).

Locate the disks titled *HP LaserJet 5 Printing System for Microsoft® Windows™*, and insert Disk 1 into drive A.

For Windows 3.1

- 1 Close all running applications. In the **Windows Program Manager** screen, pull down the **File** menu.
- 2 Select the **Run** command.
- 3 Type **A:SETUP** in the command line box and click **OK** on the screen or press **Enter** on your keyboard.
- 4 Follow the instructions on the screen to complete the installation.

For Windows 95

- 1 Click on **Start**. Select **Settings**. Select **Printers**.
- 2 Double Click on **Add Printer**.
- 3 Follow the instructions on the screen to complete the installation.

Note

Network utilities, such as JetAdmin are available through the **Custom Setup** option during software installation.

Installing the DOS Printing Software

Each DOS software application requires a separate printer driver. This installation program will install printer drivers and utilities for the following DOS applications:

- WordPerfect (versions 5.1 and 6.0)
- Lotus 1-2-3 (versions 2.3, 2.4, 3.1, 3.4, and 4.0)

Note

If your DOS application is not listed, please contact your DOS application vendor to obtain a printer driver.

If you are waiting to receive a driver for the HP LaserJet 5 printer, you can substitute a driver for a similar HP LaserJet printer. These substitute drivers allow you to use your HP LaserJet 5 printer but may not support all of the printer's features.

To install the DOS printing software:

- 1 Locate the disk titled *DOS Application Utilities and Drivers* and insert it into your drive.
- 2 At the DOS prompt type `A:SETUP` and press **Enter** on your keyboard.
- 3 Follow the instructions on the screen.

See Chapter 2 for more information on DOS printing software.

Step 14. Test Printer to Verify Setup

The easiest way to verify that the installation has been completed successfully is to print a test file from a software application.

- 1 Make sure the printer is on (I) and the printer display reads `READY` or `POWERSAVE ON`.
- 2 Load a software application of your choice (from either MS Windows or DOS).
- 3 Make sure you have selected the LaserJet 5 driver within your application.
- 4 Open or create a simple document.
- 5 Print the document.

If the test file prints, installation is now complete. If nothing printed, use the following procedure to verify that the computer and printer are connected properly.

- 1 Make sure the printer is on (I) and the printer display reads `READY` or `POWERSAVE ON`.
- 2 From a DOS prompt type `C:\DIR >PRN` and press **Enter** on the keyboard.
- 3 Press **Go**. The page should contain your directory listing.

If the directory listing printed but the test file above did not, repeat the software installation procedures (Step 12). If nothing printed, go to the problem solving questions on the following pages.

Common Questions about Setup

Test the Printer Operation

- What should I do if a blank page printed when I tried to print a self test?

Make sure that you have removed the toner cartridge sealing tape and that the toner cartridge is installed correctly.

- What should I do if the paper jammed when I tried to print a self test?

Check for packing materials still in the printer (see Step 2).

Printer Difficulties

- What should I do if my printer will not print the test file or the directory listing in Step 14?

Repeat the installation steps in this guide.

- Be sure you have removed all packing materials (Step 2).
- Be sure the toner cartridge is installed correctly and that the sealing tape was removed (Step 5).
- Verify that the cables are the correct type (Step 11).
- Be sure that all cable connections are secure, connected securely, with the right side up (Step 12).

For further assistance:

- 1 Consult your *User's Manual* (see Chapter 7, “Solving Printer Problems”).
- 2 Call the HP Dealer where you purchased your HP LaserJet 5 printer.
- 3 See the HP Support pages at the front of your *User's Manual* for customer service information.

