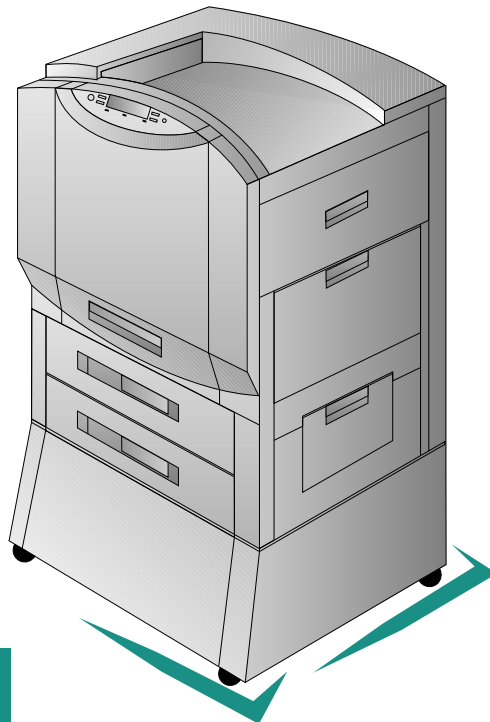


Color 
LaserJet™
8500, 8500 N, 8500 DN Printer



Getting Started Guide



READ ME FIRST

English

HP Color LaserJet 8500, 8500 N, 8500 DN Printer



Getting Started Guide

Copyright Information

© 1997 Hewlett-Packard
Company

All Rights Reserved.

Reproduction, adaptation, or translation without prior written permission is prohibited, except as allowed under the copyright laws.

Part number: C3983-90901
First Edition: October, 1997

Warranty

The information contained in this document is subject to change without notice.

Hewlett-Packard makes no warranty of any kind with respect to this information. HEWLETT-PACKARD SPECIFICALLY DISCLAIMS THE IMPLIED WARRANTY OF MERCHANTABILITY AND FITNESS FOR A PARTICULAR PURPOSE.

Hewlett-Packard shall not be liable for any direct, indirect, incidental, consequential, or other damage alleged in connection with the furnishing or use of this information.

Trademark Credits

Adobe™ is a trademark of Adobe Systems Incorporated which may be registered in certain jurisdictions.

CompuServe™ is a U.S. trademark of CompuServe, Inc.

HP-UX 9.* and 10.0 for HP 9000 Series 700 and 800 computers are X/Open Company UNIX 93 branded products.

Microsoft®, Windows®, Windows NT®, and MS-DOS® are U.S. registered trademarks of Microsoft Corporation.

PostScript™ is a trademark of Adobe Systems Incorporated which may be registered in certain jurisdictions.

UNIX® is a registered trademark in the United States and other countries, licensed exclusively through X/Open Company Limited.

All other products mentioned herein may be trademarks of their respective companies.

Contents

Where Is the User's Guide?	2
Additional Reference Materials	2
Step 1: Preparing a Location for the Printer	3
Step 2: Unpacking the Printer	4
Step 3: Installing the Cables	9
Step 4: Connecting the Printer to the Network	13
Step 5: Changing the Printer Control Panel Overlay and Language (Optional)	16
Selecting the Display Language	17
Step 6: Installing the Consumables	18
Step 7: Loading the Input Trays	24
Step 8: Configuring Input Trays	30
Selecting the Mode for Tray 1	30
Configuring Media Type and Size	31
Step 9: Printing a Configuration Page	32
Communicating with an optional HP JetDirect internal print server	34
Step 10: Understanding the Software	35
Structure of CD-ROM1	35
Installing the Software	35
Accessing the Online User's Guide	36
Additional Information	37
Step 11: Windows Network Installation	38
Configuring the Printer on the Network	39
Distributing the Printer Software to Network Clients	39
Installing the Printer Software for Network Clients	40
Connecting Network Clients to the Printer	41
Step 12: IBM LAN Network Installation	43
Installing the Printer Software for IBM LAN Server 4.x	43
Configuring the Printer on the Network	44
Distributing the Printer Software to Network Clients	44
Installing the Printer Software for Network Clients	44
Connecting Network Clients to the Printer	45
Step 13: Macintosh Network Installation	46
Installing the Macintosh Printer Software	46
Connecting Network Clients to the Printer	47
Configuring the Printer on the Network	48
Distributing the Printer Software to Network Clients	48
Installing the Macintosh Printer Software for Network Clients	48
Troubleshooting Checklist	49

Where Is the User's Guide?



The printer software includes the online user's guide on CD-ROM. The online user's guide provides information at your computer about printer hardware, troubleshooting, and customer service.

The online user's guide and the software needed to read the guide can be installed on your computer when you install the printer software. Once installed, accessing information is easy:

- Microsoft® Windows 95 users click **Start**, point to **Programs**, then **HP LaserJet**, and click the online user's guide icon.
- Microsoft Windows 3.1x users locate the HP LaserJet group and double-click the online user's guide icon.
- Macintosh users locate the HP LaserJet group and double-click the online user's guide icon.

For more information about finding information in the online user's guide, see "Step 10: Understanding the Software" in this guide.

Additional Reference Materials

Reference materials shipped with this printer include the following resources. For additional information or if you need to order software or parts, see the customer service information in the online user's guide.



Getting Started Guide (this guide) provides information on installing the hardware and software for the printer.



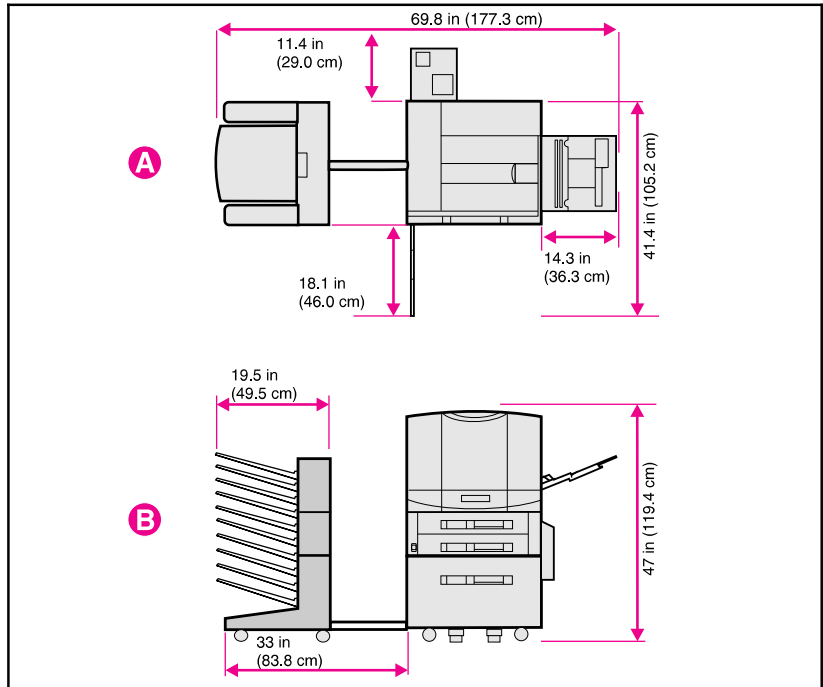
Quick Reference Guide provides information at the printer on media jams, loading media, and common printer control panel messages.



Online Help provides information at your computer about the printer software and printer drivers.

Step 1: Preparing a Location for the Printer

Figure 1



A Top View (with optional multi-bin mailbox and tray 4)

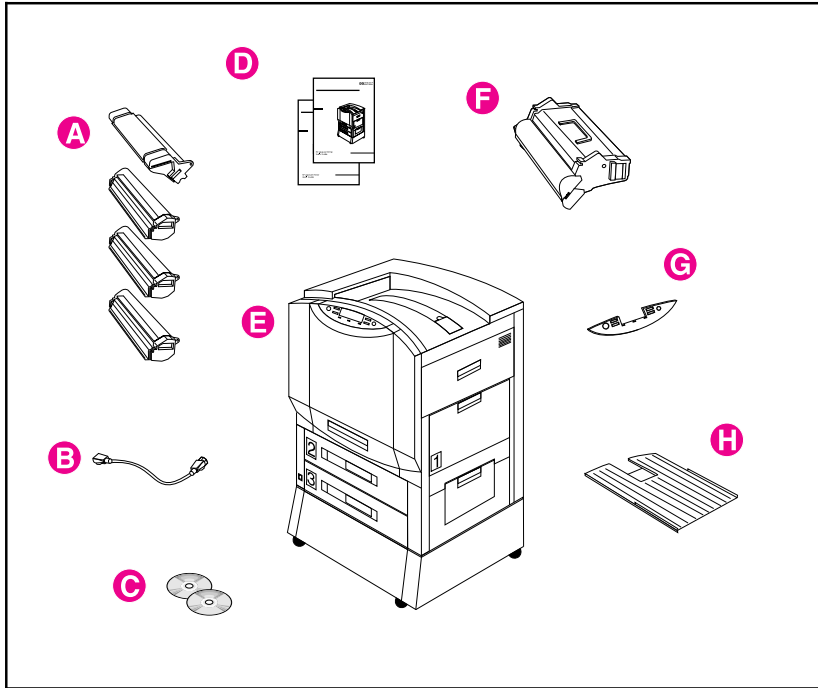
B Front View (with optional multi-bin mailbox and tray 4)

This printer requires the following:

- Space around the printer, as shown above
- Sturdy, level floor surface
- A well-ventilated room without abrupt humidity or temperature changes
- An area with a recommended temperature range of 68° to 79° F (20° to 26° C), or an allowed temperature range of 59° to 86° F (15° to 30° C)
- An area with a recommended humidity range of 20% to 50% relative humidity (RH), or an allowed humidity range of 10% to 80% RH
- Line voltage and frequency not varying more than 10% from the value stated on the printer regulatory label (located on the back of the printer)

Step 2: Unpacking the Printer

Figure 2

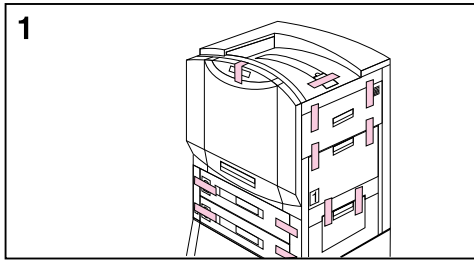


The following items are included with the printer:

- A** Toner cartridges: black, cyan, magenta, and yellow
- B** Power cord
- C** Software on CD-ROM
- D** Manuals: getting started guide (this guide) and quick reference guide; the online user's guide is on a CD-ROM
- E** Printer—shown with standard printer stand; if ordered, an optional tray 4 replaces the printer stand
- F** Imaging drum
- G** Control panel overlay (if applicable)
- H** Left (face-up) output bin

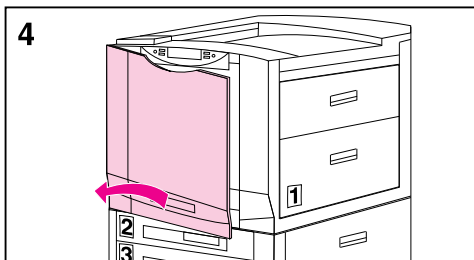
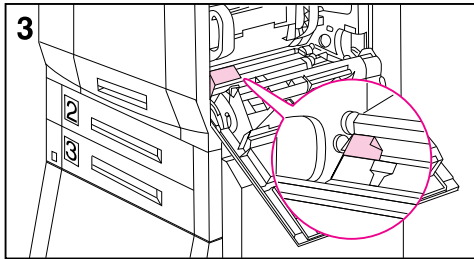
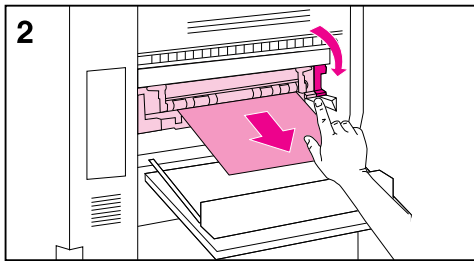
Note

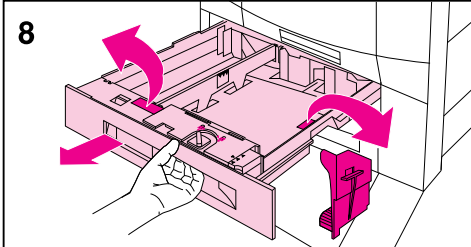
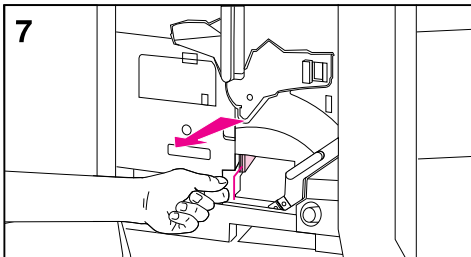
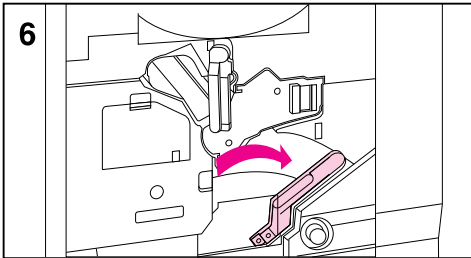
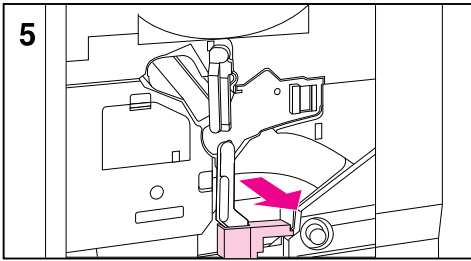
If an optional 2,000-sheet input tray (tray 4) was ordered, a power pack (containing power connections for the printer and tray 4), a preinstalled interface cable (connecting tray 4 to the printer), and five stabilizing legs are also included.



To unpack the printer

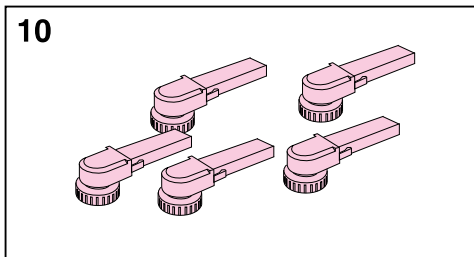
- 1 Remove all external packing tape from the printer.
- 2 Open the lower left door and push down the green lever on the right side of the fuser. Then, remove the orange shipping notice from the fuser.
- 3 Open the upper right door and remove the packing tape at the left side of the opening.
- 4 Open the front door.





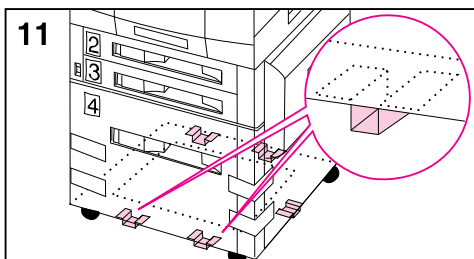
- 5 Remove the packing material from the lower (green) lever.
- 6 Press the white button on the lower (green) lever and swing the lever to the right.
- 7 Remove the packing cardboard from inside the printer and then swing the lower (green) lever back to the left, making sure the lever clicks into place.
- 8 Firmly grip the handle in the center of tray 2, squeeze the release lever, and pull the tray out until it stops. Then remove the orange packing spacers from inside the tray and close the tray.
- 9 Repeat step 8 to remove the orange packing spacers from tray 3.

If the printer came with an optional tray 4, continue with step 10. If the printer came with a stand, proceed to step 18.



Note

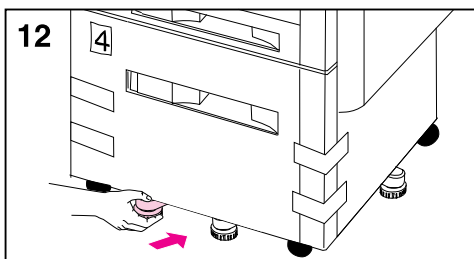
Follow steps 10-13 to attach the five stabilizing legs to the bottom of tray 4. If the five stabilizing legs (which are in addition to the four locking wheels) are already attached, proceed to step 14.



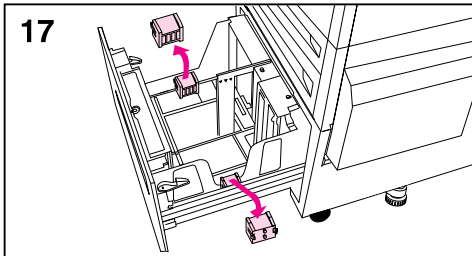
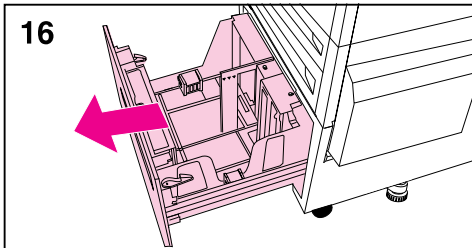
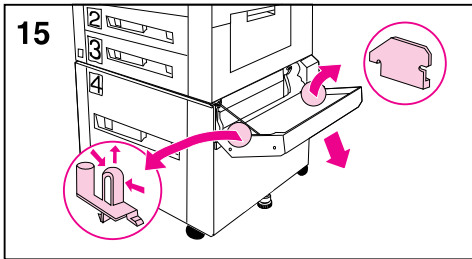
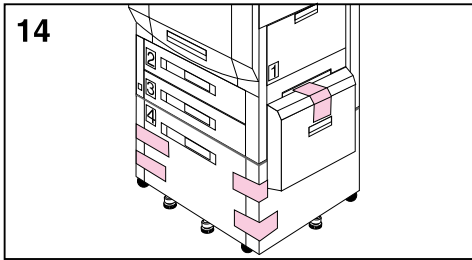
10 Locate the five stabilizing legs that came with the printer.

11 Locate the five guides for the stabilizing legs on the bottom of tray 4—two guides at the front edge, one on the right edge, and two on the back edge.

12 Insert a stabilizing leg into one of the guides and push the leg into the guide until it stops.



13 Repeat step 12 above to attach the other four stabilizing legs.



- 14** Remove the packing tape from tray 4.
- 15** Open the media transfer door and remove the orange packing spacers.
- 16** Firmly grip the handle in the center of tray 4, squeeze the release lever, and pull the tray out until it stops.
- 17** Remove the two orange packing clips from inside tray 4 by squeezing the sides of the clips and pulling them out.

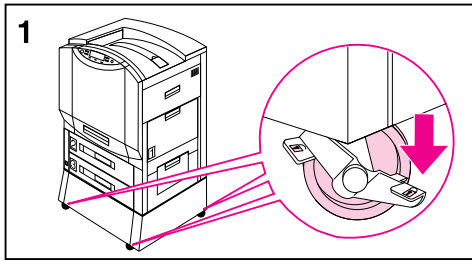
Caution

Leaving the orange clips in tray 4 can damage the tray.

- 18** Close all doors and input trays.
- 19** Remove the protective film from the printer control panel display.

By completing steps 1 through 19 above, all tape and spacers should be removed and unpacking of the printer should be complete.

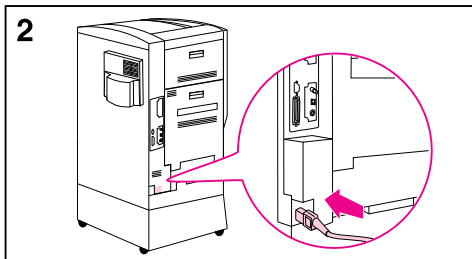
Step 3: Installing the Cables



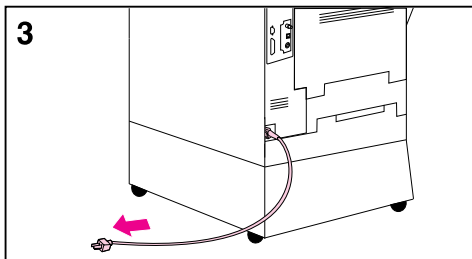
To connect the power cord to a printer with a stand

Note

Make sure that the printer is off (power button out) before connecting the power cord.



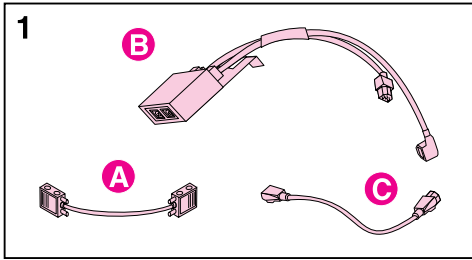
- 1 Roll the printer to its permanent location, where all four wheels rest on a level floor surface, and stabilize it by pushing the locking tabs on the printer stand's wheels to the locked position.



WARNING!

An unstable printer can tip over and cause injury; make sure that the printer is secured properly.

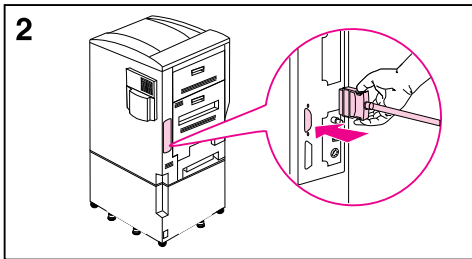
- 2 Plug the female end of the power cord into the connector on the back left corner of the printer.
- 3 Plug the male end of the power cord into a surge protector or other grounded power source.



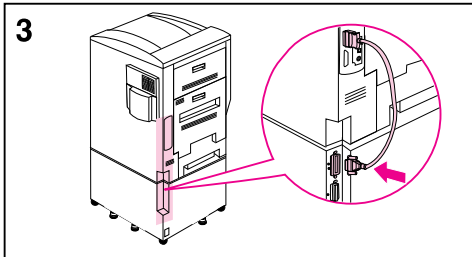
To connect the interface cable and power cords for a printer with an optional tray 4

Note

Make sure that the printer is off (power button out) before attaching the interface cable and connecting the power cords.

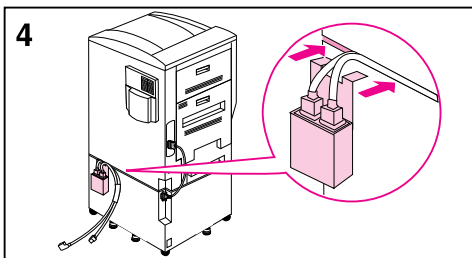


- 1 Locate the interface cable (A), the power pack (B), and the straight power cord (C).

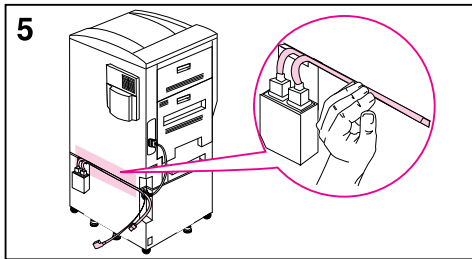


Note

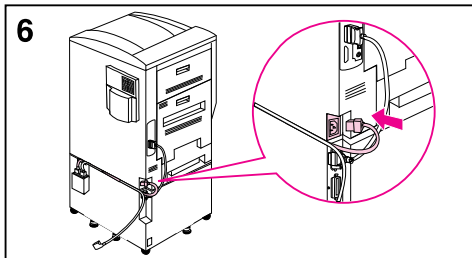
The interface cable (A) might already be attached to the printer and tray 4. If it is, proceed to step 4 below; otherwise, continue with step 2.



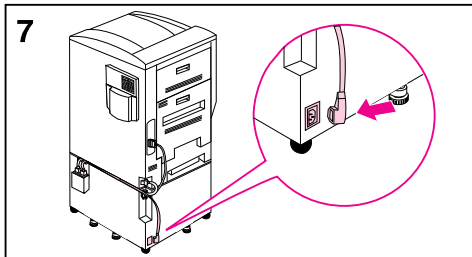
- 2 Attach the end of the interface cable that is marked with one dot to the printer above the parallel connector.
- 3 Attach the other end of the interface cable (marked with two dots) to the connector on tray 4 that is marked with two dots.
- 4 Attach the power pack to the back of the printer by inserting the clip into the space between the printer and tray 4.



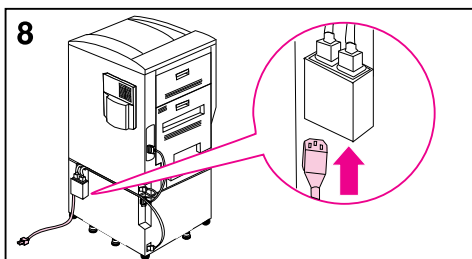
5 Push the two cables extending from the power pack into the space between the printer and tray 4 along the back of the printer.



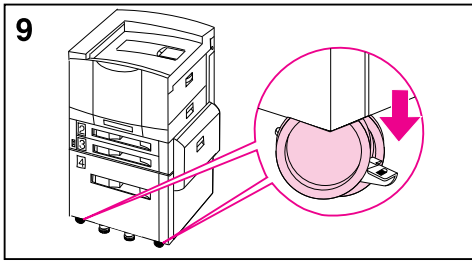
6 Plug the shorter of the two cables into the connector on the back left corner of the printer.



7 Plug the longer of the two cables into the connector on the back left corner of tray 4.

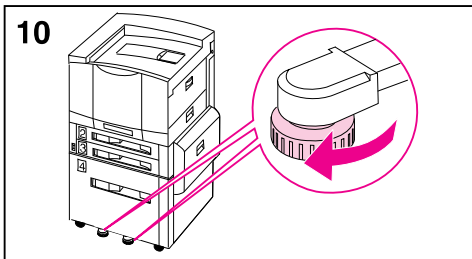


8 Plug the female end of the power cord into the male connector on the bottom of the power pack.



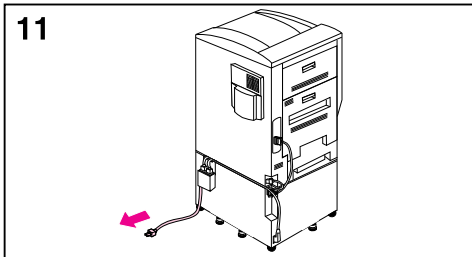
9 Roll the printer to its permanent location, where all four wheels rest on a level floor surface, and stabilize it by pushing the locking tabs on the tray's wheels to the locked position.

10 Rotate the feet of the five stabilizing legs and the anti-tip foot (on the left side of the tray) until they are snug against the floor.



WARNING!

An unstable printer can tip over and cause injury; make sure that the printer is secured properly.

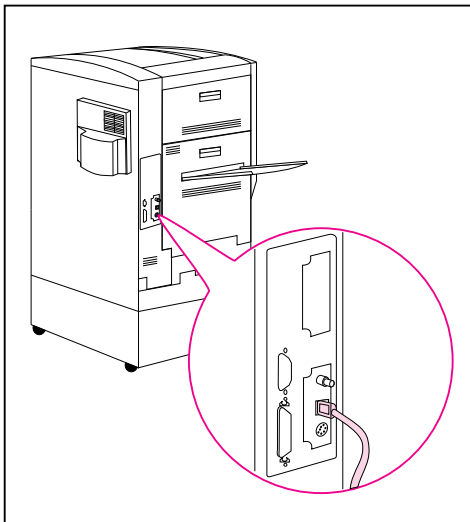
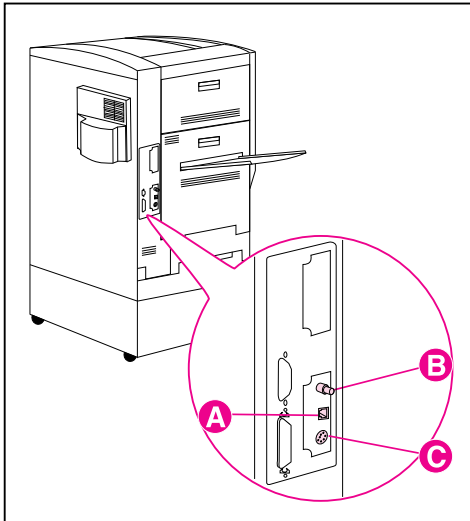


11 Plug the male end of the power cord into a surge protector or other grounded power source.

Note

If an optional multi-bin mailbox was ordered, see the installation guide included with the mailbox for installation instructions.

Step 4: Connecting the Printer to the Network



If you will connect the computer to the printer with a parallel cable, see “To connect a parallel cable” later in this Step.

If the printer was shipped with an optional HP JetDirect internal print server, one of two types is installed in the printer:

- HP JetDirect Ethernet print server supports up to three different network interface cables—RJ-45 (unshielded twisted pair) for 10Base-T networks, BNC (coaxial) for 10Base2 networks, and DIN-8 for LocalTalk networks. This print server supports only one Ethernet connection at a time—RJ-45 or BNC.
- HP JetDirect 10/100TX print server supports RJ-45 (unshielded twisted pair) for 10Base-T or 100Base-TX networks.

The locations of ports on the HP JetDirect internal print server are as follows:

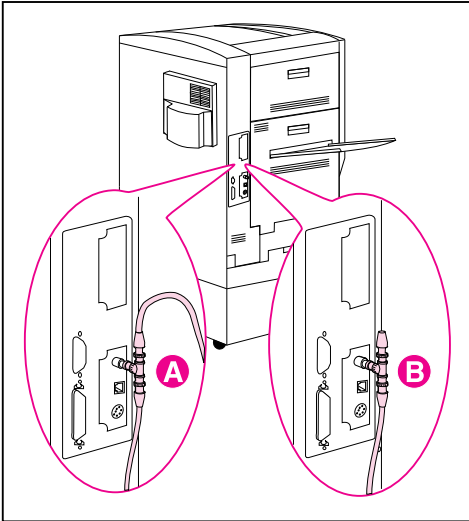
- A** RJ-45 port (this is the only connector available with the HP JetDirect 10/100TX card)
- B** BNC port
- C** LocalTalk (DIN-8) port

To connect to a 10Base-T or 100Base-TX network

Plug the connector of the unshielded twisted-pair network cable into the RJ-45 port. The other end of the cable should be attached to the network.

Note

RJ-45 cables are not included with the printer. They must be purchased separately.

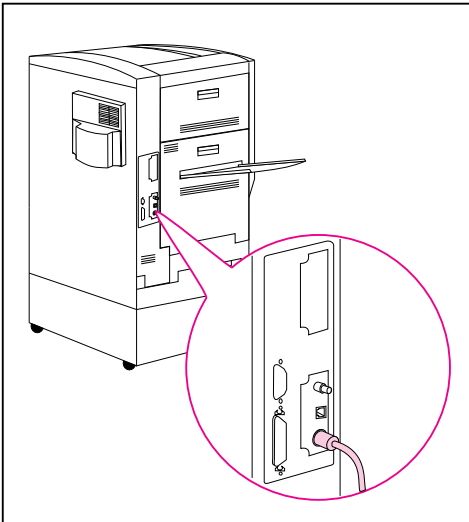


To connect to a 10Base2 network

- 1 Attach one section of the ThinLAN (coaxial) cable to a BNC “T” connector.
- 2 Attach another ThinLAN cable section (A) or, if it is at the end of the network, a 50-Ohm terminator (B) to the other side of the BNC “T” connector.
- 3 Plug the BNC “T” connector into the BNC port.

To connect to a LocalTalk network

Plug the end of the DIN-8 cable into the LocalTalk port.

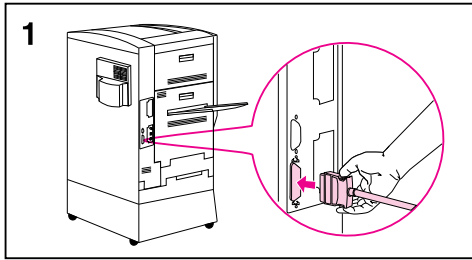


Note

ThinLAN and DIN-8 cables, BNC “T” connectors, and 50-Ohm terminators are not included with the printer. They must be purchased separately.

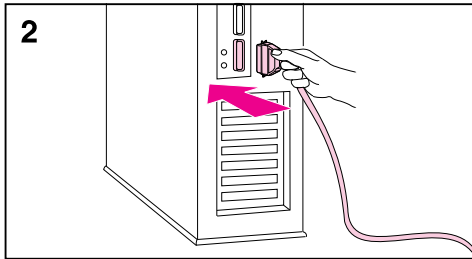
Note

If you only use the LocalTalk port, EIO 1 INITIALIZING will appear every time you turn the printer on. The message should not interfere with normal printing through LocalTalk. If it does not clear within approximately five minutes, there is a problem with the print server or the network. To prevent the message from appearing during normal operation, connect a BNC “T” connector with two 50-Ohm terminators to the BNC port.



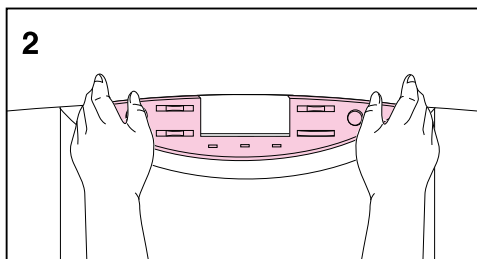
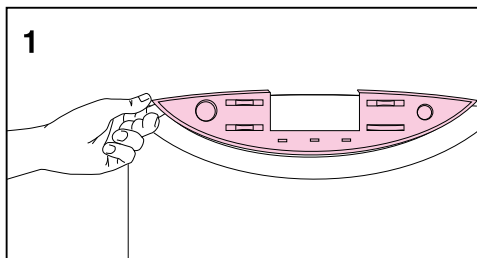
To connect a parallel cable

To print through the parallel port, the printer requires a 25-pin male/micro 36-pin male (“C-size”) parallel cable that is IEEE-1284 compliant. The cable is not included with the printer. It must be purchased separately.



- 1 Squeeze the clips on the micro 36-pin end of the parallel cable and plug it into the printer's parallel port. Release the clips.
- 2 Plug the other end of the parallel cable into the computer. Tighten the screws on the parallel cable to secure the cable to the computer.

Step 5: Changing the Printer Control Panel Overlay and Language (Optional)



Replace the printer control panel overlay with the one included for your language, if applicable. Then configure the printer control panel to show printer messages in your language.

To replace the overlay

- 1 Insert a thumbnail or a thin, rigid object under the edge of the overlay on the printer control panel and pull up on the overlay until it comes off.
- 2 Place the new overlay over the printer control panel and snap it into place.

Selecting the Display Language

Use the printer control panel to set the printer to display printer messages and print configuration pages in a variety of supported languages.

To select the printer control panel language

- 1 Hold down **Select** while turning the printer on (power button in). `CONFIG LANGUAGE` (in English) appears on the printer control panel display for approximately one second. Once the printer has restarted, `LANGUAGE = ENGLISH` will appear on the display.

Note

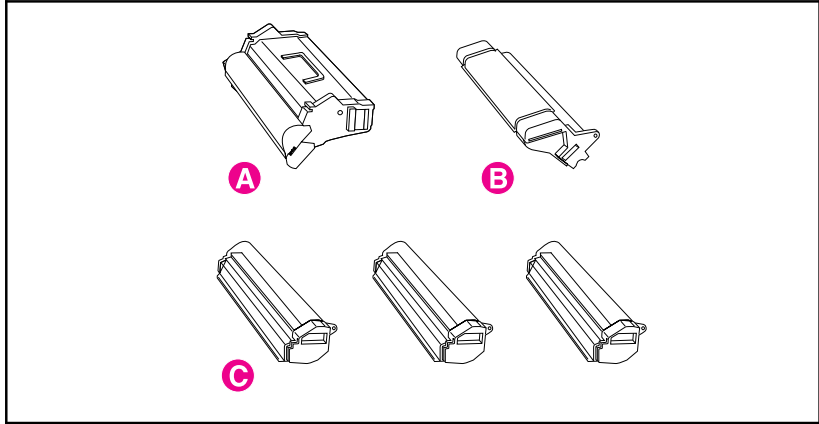
Only **- Value +**, **Select**, and **Go** are active while the display language is being configured. All other keys are ignored.

If you press **Go** without selecting a language, the printer will bring itself online and all subsequent messages will be displayed in English. However, since no display language was selected, the `LANGUAGE = ENGLISH` message will reappear (after the power-on self test) when the printer is next turned on. This message will be displayed every time the printer is turned on until you select a language through the configure language mode.

-
- 2 Press **- Value +** until the language you want appears on the display.
 - 3 Press **Select** to save the selection.
An asterisk (*) appears to the right of the selection. The language selected will be the default language until another selection is made by restarting the printer in the configure language mode.
 - 4 Press **Go**.
 - 5 Turn the printer off (power button out).

Step 6: Installing the Consumables

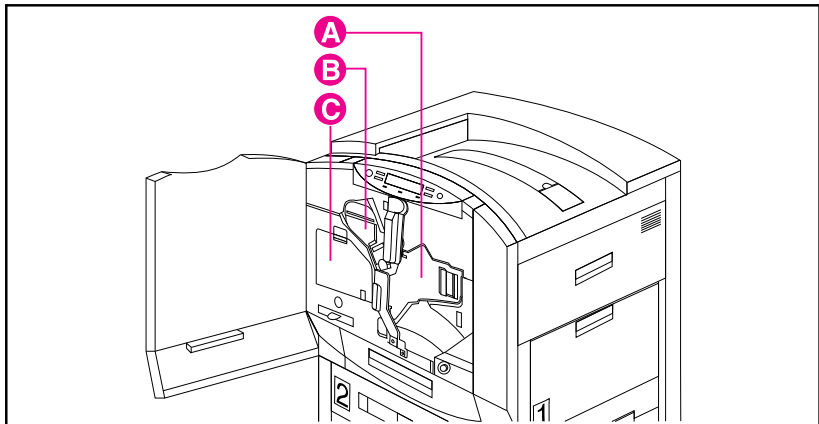
Figure 3



The following parts (consumables) are included with the printer:

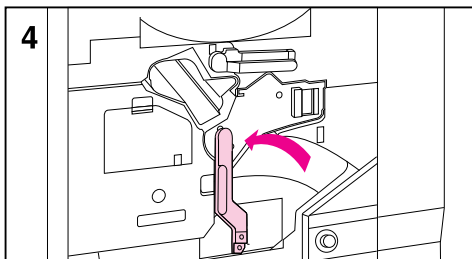
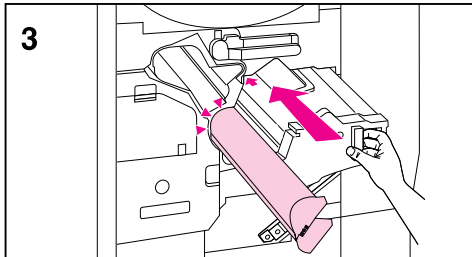
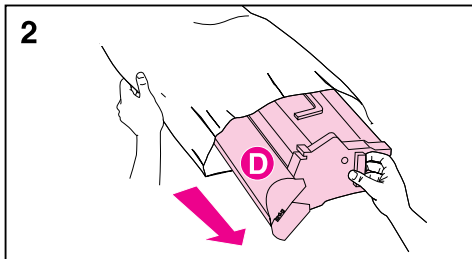
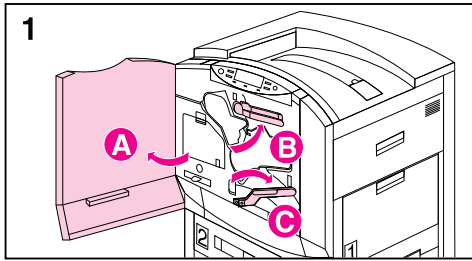
- A** Imaging Drum
- B** Black Toner Cartridge
- C** Color Toner Cartridges: yellow, magenta, and cyan

Figure 4



Install the consumables in the printer in this order:

- A** Imaging Drum
- B** Black Toner Cartridge
- C** Color Toner Cartridges (behind the clear door are three slots, one for each of the color toner cartridges)



To install the imaging drum

Note

Make sure that the printer is off (power button out) before installing the imaging drum.

- 1 Open the front door of the printer (A). Swing the upper (blue) lever to the right (B). Press the white button on the lower (green) lever and swing the lever to the right (C).
- 2 Remove the imaging drum from its packaging.

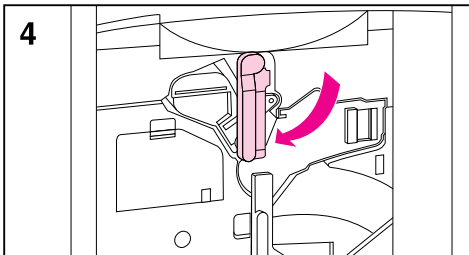
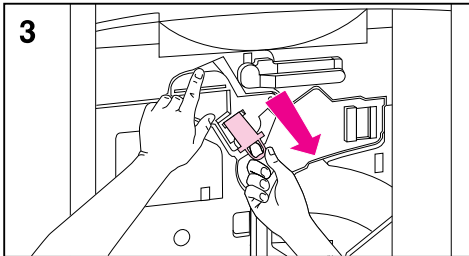
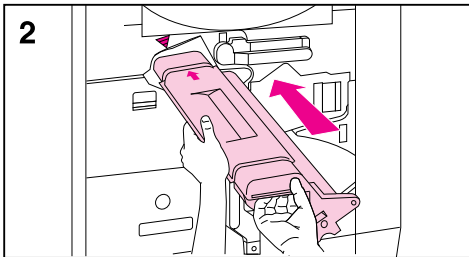
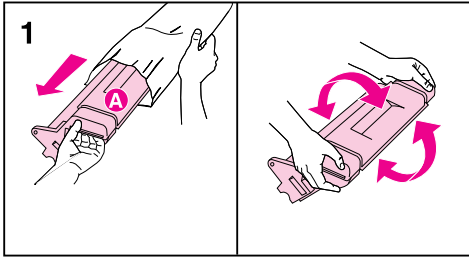
Caution

There is a cover (D) protecting the drum's cylinder. Do not remove this cover or the drum might be damaged; it will come off when you perform step 3, below.

- 3 Push the drum into the printer. The protective cover will slide off as the drum enters the printer. Set the cover aside.
- 4 Swing the lower (green) lever back to the left, making sure it clicks into place.

Note

If the lever does not return to its original position, make sure that the imaging drum is all the way in the printer.



To install the black toner cartridge

- 1 Remove the black toner cartridge from its packaging and gently rock the cartridge several times to distribute the toner.

Caution

Do not lift or remove the shutter (A) on the cartridge.

- 2 Align the arrow on the top of the cartridge with the arrow at the top of the slot in the printer and slide the cartridge into the printer.
- 3 Place one hand on the cartridge and use the other hand to pull the orange ring and remove the seal. Discard the seal.

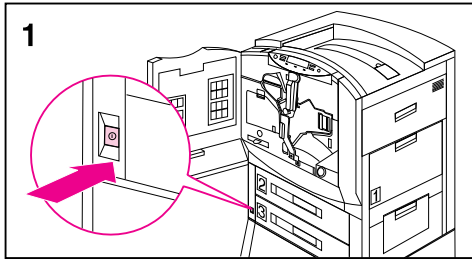
Note

If toner gets on fabric, wipe the toner off with a dry cloth and then wash the clothing in cold water. Warm water or the heat of a dryer will set toner into fabric.

- 4 Swing the upper (blue) lever back to the left.

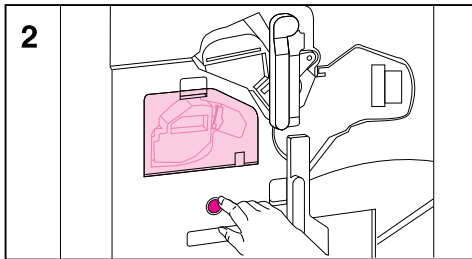
Note

If the lever does not return to its original position, make sure that the black toner cartridge and the imaging drum are all the way in the printer and that the orange seal was removed from the toner cartridge.



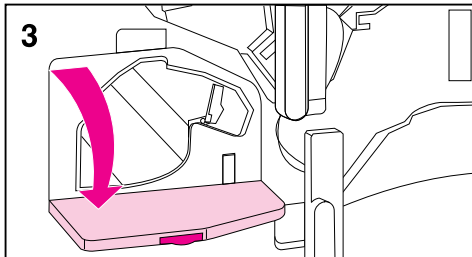
To install the color toner cartridges

- 1 Turn the printer on (power button in).
- 2 Press the blue button beneath the clear door to turn the color toner carousel to the slot marked with a yellow sticker.

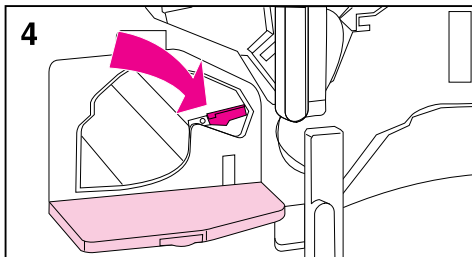


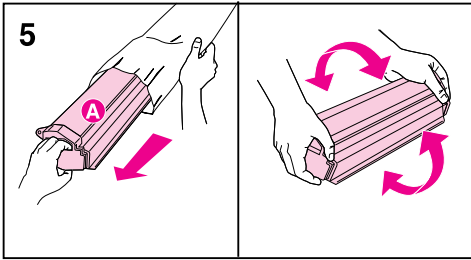
Note

The carousel will not rotate unless the clear door is closed, the imaging drum and black toner cartridge are installed completely (including removing the orange seal from the black toner cartridge and swinging the upper lever to the left), and the upper right door is closed.



- 3 Open the clear door.
- 4 Push the (blue) locking lever to the right.

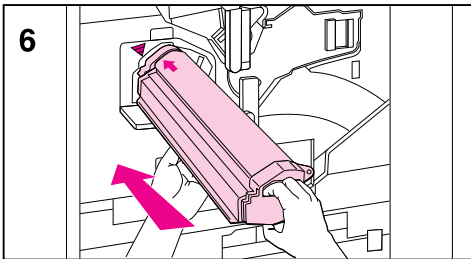




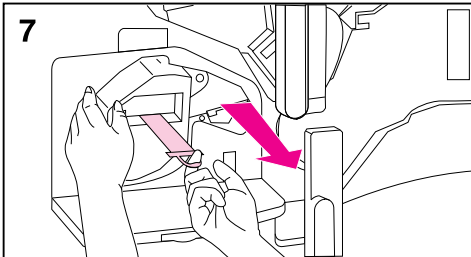
- 5 Remove the toner cartridge that matches the color of the sticker in the carousel slot from its packaging and gently rock the cartridge several times to distribute the toner.

Caution

Do not lift or remove the shutter (A) on the cartridge.

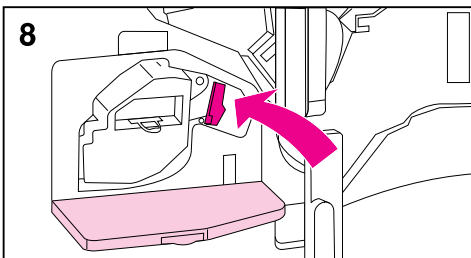


- 6 Align the arrow on the top of the cartridge with the arrow at the top of the slot and slide the cartridge into the printer.



Note

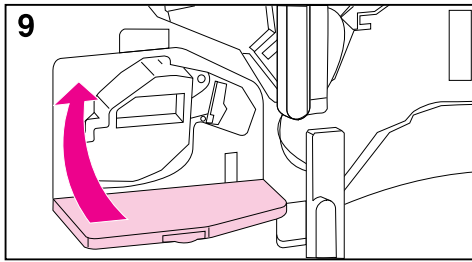
If the cartridge does not slide completely into the printer, make sure that the color of toner in the cartridge matches the colored sticker on the slot.



- 7 Place one hand on the cartridge and use the other hand to pull the orange ring and remove the seal. Discard the seal.
- 8 Push the blue locking lever back to the left.

Note

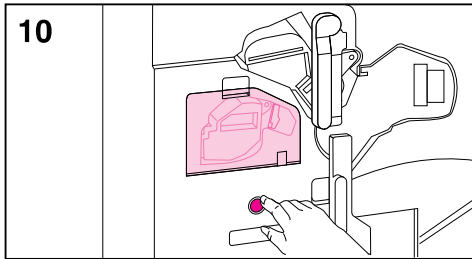
If toner gets on fabric, wipe the toner off with a dry cloth and then wash the clothing in cold water. Warm water or the heat of a dryer will set toner into fabric.



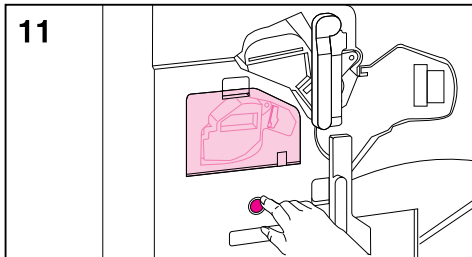
9 Close the clear door.

Note

If the clear door does not close, make sure that the blue locking lever is all the way to the left and that the seal has been completely removed from the toner cartridge.



10 Press the blue button to rotate the carousel to the slot marked with a magenta sticker and repeat steps 3 through 9.

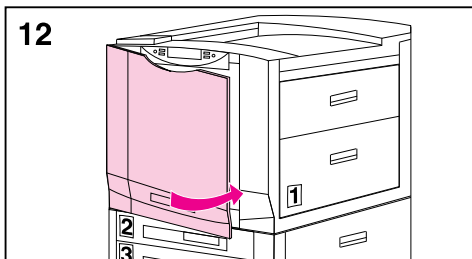


11 Press the blue button to rotate the carousel to the slot marked with a cyan (blue) sticker and repeat steps 3 through 9.

12 Close the front door.

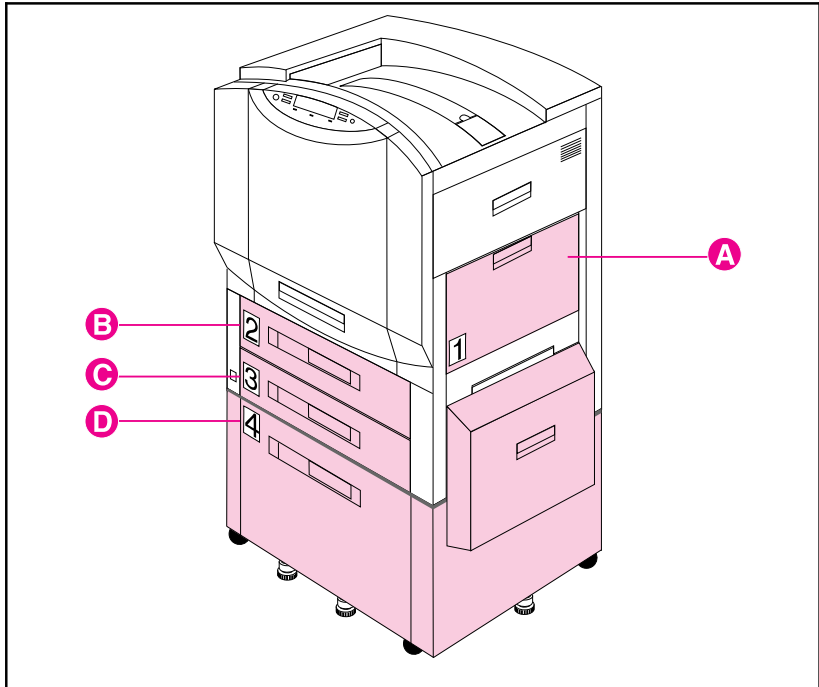
Note

To prevent damage to the printer, do not move the printer after the imaging drum or any of the toner cartridges have been installed.



Step 7: Loading the Input Trays

Figure 5

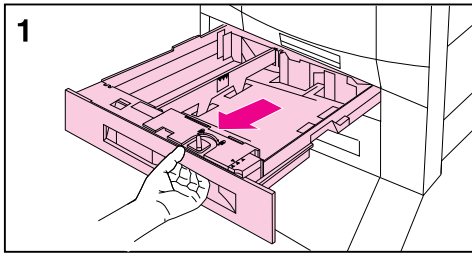


The printer has the following input trays:

- A Tray 1 (multipurpose tray)
- B Tray 2
- C Tray 3
- D Tray 4 (optional)

These input trays contain media guides that are preset at the factory to a default media size, either letter or A4.

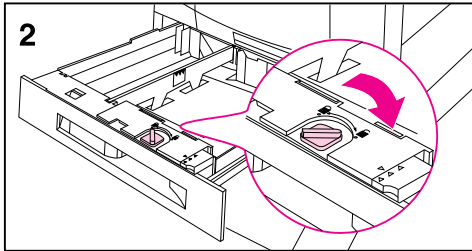
For more information about printing on different sizes and types of media, see the online user's guide or the quick reference guide.



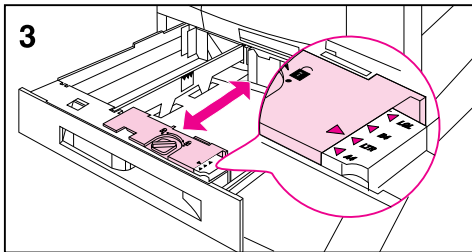
Loading media into trays 2 and 3

Note

Before loading media into trays 2 and 3, verify that the spacers were removed from both trays when “Step 2: Unpacking the Printer” was performed.

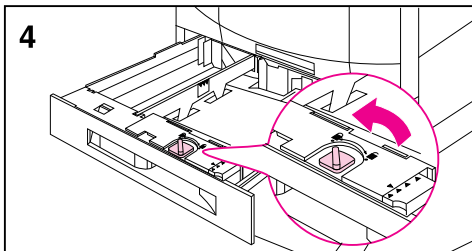


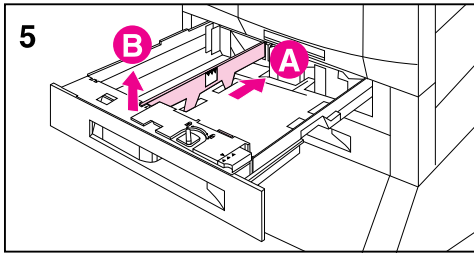
- 1 Firmly grip the handle in the center of tray 2, squeeze the release lever, and pull the tray out until it stops.



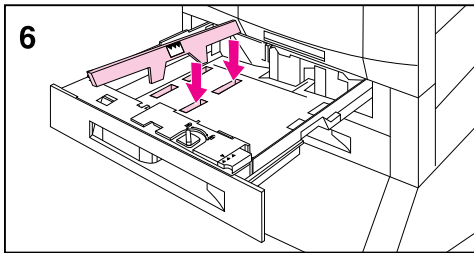
Depending on your country, input trays arrive adjusted for either A4- or letter-sized media. To load A4- or letter-sized media, proceed to step 8; otherwise, continue with step 2.

- 2 Turn the media-guide lock to the unlocked position.
- 3 Slide the front media guide to the size that matches the media size you are loading.
- 4 Turn the media-guide lock to the locked position.

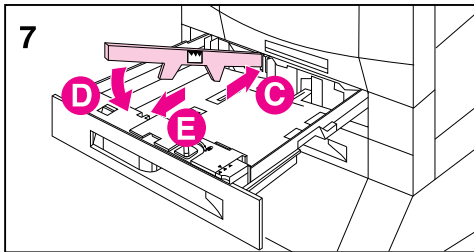




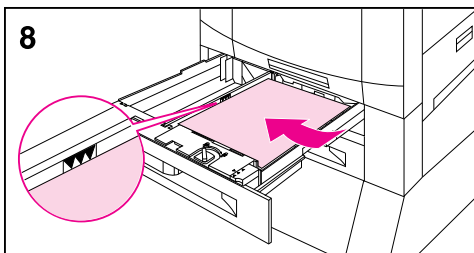
5 Adjust the left media guide by pushing it in (A) and lifting it up and out (B).



6 Position the guide over the appropriate media size marked in the tray.



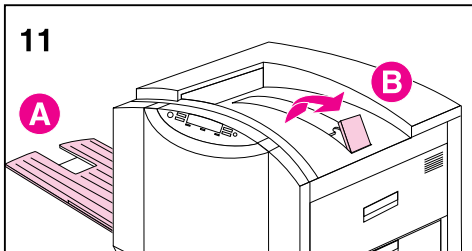
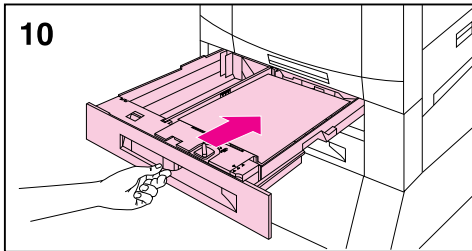
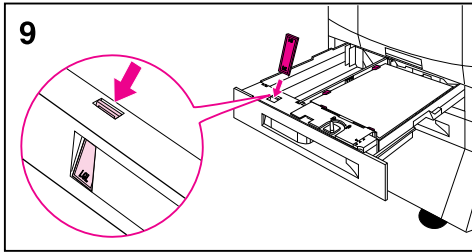
7 Press the guide into the rear slot (C), and then lower it down (D) into the front slot (E). Make sure the guide is not skewed.



8 Load media into the tray up to the media-fill mark. For example, up to 500 sheets of 20 lb (75 g/m²) bond paper will fit in the tray. For information on loading and orienting media, see the online user's guide or the quick reference guide.

Note

Do not fill input trays above the media-fill mark. Too much media in the input trays can cause media jams.

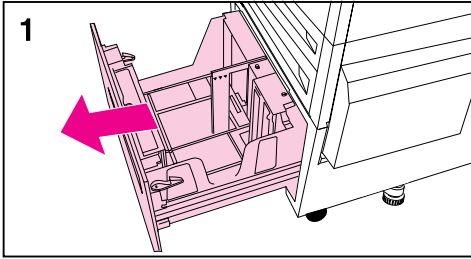


- 9 Make sure that the media-size tab on the front of the tray is set to the correct media size.
- 10 Slide the tray back into the printer.
- 11 Attach the left output bin (A) to the left side of the printer if you did not install an optional multi-bin mailbox. If necessary, adjust the media stop guide (B) on the top output bin for media sizes larger than letter or A4.
- 12 Repeat steps 1 through 10 to load media into tray 3.

Set the media type for trays 2 and 3 in the printer control panel. For instructions, see “Step 8: Configuring Input Trays.”

Note

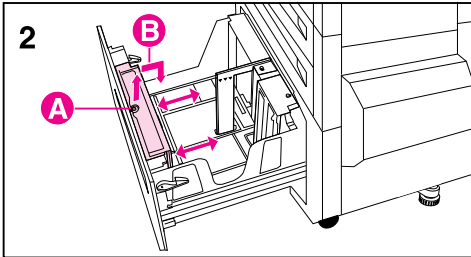
Always configure the media type in the printer control panel to prevent users from printing on the wrong media type.



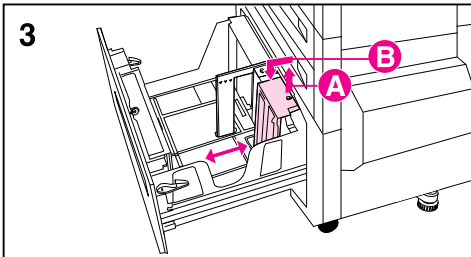
Loading media in the optional tray 4

Note

Before loading media into tray 4, verify that the spacers were removed from the tray when “Step 2: Unpacking the Printer” was performed.

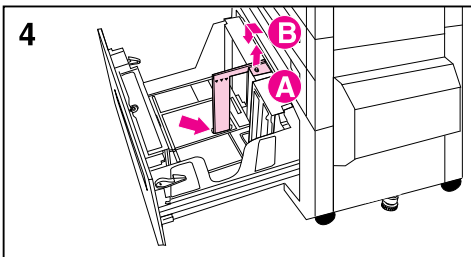


- 1 Firmly grip the handle in the center of the input tray, squeeze the release lever, and pull the tray out until it stops.



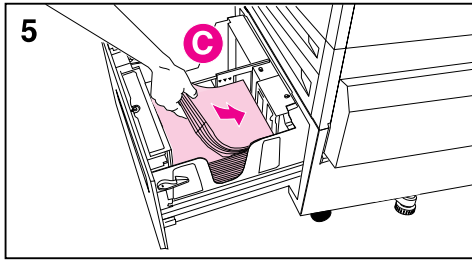
Depending on your country, tray 4 arrives adjusted for either A4- or letter- sized media. To load A4- or letter-sized media, proceed to step 5; otherwise, continue with step 2.

- 2 Adjust the front guide by pulling up on the pin (A), placing the guide into the slots on the top and bottom of the tray that correspond to the media size you are loading (B), and pushing in the pin.
- 3 Repeat step 2 to adjust the back guide.
- 4 Repeat step 2 to adjust the left media guide.

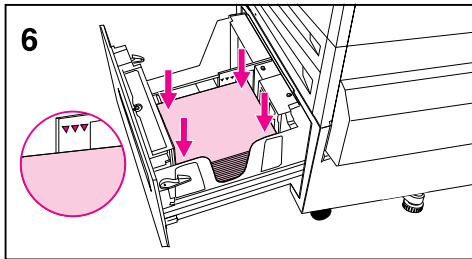


Note

To load 11-by-17 inch media, rotate the left media guide 90°, move it to the back of the tray, and place it into the slots on the top and bottom of the tray that correspond to 11-by-17.

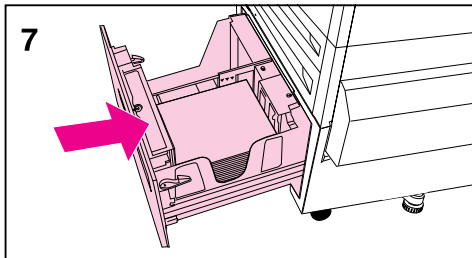


- 5 Load media into the tray up to the media-fill mark. For example, up to 2,000 sheets of 20 lb (75 g/m²) bond paper will fit in the tray. For information on loading and orienting media, see the online user's guide or the quick reference guide.



Note

Do not place anything in tray 4 to the left of the media guides (C) or the printer will not lift media out of the tray. Also, do not fill media above the media-fill mark on the left media guide. Too much media in the tray can cause media jams.



- 6 Press down on all four corners of the media stack to ensure the media rests flat in the tray.
- 7 Close tray 4.

Set the media type for tray 4 in the printer control panel. For instructions, see “Step 8: Configuring Input Trays.”

Note

Always configure the media type in the printer control panel to prevent users from printing on the wrong media type.

Step 8: Configuring Input Trays

Configure the mode for tray 1 (either First mode or Cassette mode), the type of media (such as plain paper, letterhead, and transparencies) for each of the input trays, and the size of the media (such as letter, A4, and legal) to use tray 1 in Cassette mode. When input trays are configured correctly, the printer will print based on media type and size and will automatically use the correct input tray.

For example, tray 2 could contain letterhead; tray 3, plain legal-sized paper; and tray 4, plain letter-sized paper. If the trays are configured correctly, when you set up a print job you can choose the media type and size in the printer driver, and the printer will automatically print from the correct input tray.

Selecting the Mode for Tray 1

Tray 1 has two modes: First mode and Cassette mode. First mode is the default mode for tray 1. In First mode, tray 1 functions as a multipurpose tray. When tray 1 is in First mode, the printer will look first for media loaded in tray 1. If media is loaded in tray 1, the printer will print from tray 1.

In Cassette mode, tray 1 functions as a regular input tray. When tray 1 is in Cassette mode, load media in tray 1 and configure the media type and size in the printer control panel.

Note

When tray 1 is in First mode, specify the media type and size in the printer driver. If the printer senses that the media in tray 1 is a different size from the media specified in the printer driver, then the printer will not feed the media (to prevent damage to the printer).

To configure the mode for tray 1

- 1 Press **Menu** until PAPER HANDLING MENU appears on the printer control panel display.
- 2 Press **Item** until TRAY 1 MODE = appears on the display.
- 3 Press **- Value +** until the correct mode appears on the display.
- 4 Press **Select** to save the selection. An asterisk (*) appears to the right of the selection.
- 5 Press **Go** to bring the printer online.

Configuring Media Type and Size

Configuring the media type is beneficial for several reasons:

- Configuring the media type prevents printing on the wrong (and possibly more expensive) media.
- If a user changes the type of media in an input tray, other users can still print on the correct media.
- The printer will automatically adjust its print speed to accommodate special media (such as card stock, labels, and transparencies). These adjustments will give the highest quality output, saving time and resources.

Note

If the media type is not set correctly, then the printer might not print on the correct media or at the correct speed for the media type, which can result in poor print quality.

To configure media type and size

- 1 Press **Menu** until PAPER HANDLING MENU appears on the printer control panel display.
- 2 Press **Item** until TRAY [Number] TYPE = appears on the display.
- 3 Press **- Value +** until the correct media type appears on the display.
- 4 Press **Select** to save the selection. An asterisk (*) appears to the right of the selection.

Note

Tray 2, tray 3, and the optional tray 4 automatically sense the media size. To configure the media size for tray 1 in Cassette mode, continue with step 5. Otherwise, proceed to step 8.

- 5 Press **Item** until TRAY 1 SIZE = appears on the printer control panel display.
- 6 Press **- Value +** until the media size appears on the display.
- 7 Press **Select** to save the selection. An asterisk (*) appears to the right of the selection.
- 8 Repeat steps 2 through 4 to configure media type in another tray.
- Or -
Press **Go** to bring the printer online.

Step 9: Printing a Configuration Page

Use the printer control panel to print a configuration page and verify that the printer was installed correctly. Configuration pages include the following information:

- General information about the printer (such as serial number and number of pages printed since most recent maintenance)
- Installed languages
- Print job errors
- Memory available and installed dual inline memory modules (DIMMs)
- Control panel and printer hard disk security
- Installed optional equipment (such as a tray 4 or duplexer)
- Tray configuration
- Network configuration

To print a configuration page

- 1 Press **Menu** until INFORMATION MENU appears on the printer control panel display.
- 2 Press **Item** until PRINT CONFIG PAGE appears on the display.
- 3 Press **Select** to print the configuration page. The printer will automatically bring itself online.

For more information about printing configuration pages, see the online user's guide.

To verify communication with a parallel cable

To verify that the printer and computer are set up correctly to communicate with each other, print a directory list.

- 1 Turn the computer and printer on and wait for the printer to bring itself online (the printer is online when the Ready light on the printer control panel is lit).
- 2 At the MS-DOS® prompt, type `DIR>LPT1` and press **Enter**.

Note

If you are using a UNIX® environment, use the equivalent commands.

- 3 If the Data light on the printer control panel display stays on, press **Go**. Otherwise, go to step 4, below.
- 4 If the printer prints the directory list, the printer setup is complete and the printer is ready for the software to be set up to work with the new printer.
 - Or -
If a message appears on the printer control panel, see the online user's guide for more information about the message.
 - Or -
If the printer neither prints the directory list nor displays an error message on the printer control panel, check that all power cables are plugged in and that all cables connecting the printer and computer are securely fastened.

Communicating with an optional HP JetDirect internal print server

If the printer contains an optional HP JetDirect internal print server, and you cannot communicate with the printer over the network, verify the operation of the print server. Check the JetDirect configuration page, which was printed when the steps under “To print a configuration page” were performed. If the message “I/O CARD READY” does not appear on the JetDirect configuration page, see the troubleshooting section of the *HP JetDirect Print Server Software Installation Guide*.

HP JetDirect 10/100TX print server

If the printer contains an optional HP JetDirect 10/100TX print server, check to see that the print server was able to link to the network:

- Check the link-speed indicators (10 or 100) on the print server. If both are off, the print server failed to link to the network.
- Check the JetDirect configuration page, which was printed when the steps under “To print a configuration page” were performed. The message “LOSS OF CARRIER ERROR” indicates that the print server failed to link to the network.

If the print server failed to link, verify that all cables are correctly connected. If all cables are correctly connected and the print server still fails to link, follow the steps below to reconfigure the print server:

- 1 Remove the HP JetDirect 10/100TX print server.
- 2 Use jumpers P1, P2, and P3 to manually configure the print server for either 10 or 100 Mbps (megabits per second) link speed, and Full- or Half-duplex operation according to the table below:

Print Server Operation	Jumper P1	Jumper P2	Jumper P3
Autonegotiation Enabled	AUTO	—	—
100 Half-duplex	(not AUTO)	100	H
100 Full-duplex	(not AUTO)	100	(not H)
10 Half-duplex	(not AUTO)	(not 100)	H
10 Full-duplex	(not AUTO)	(not 100)	(not H)

- 3 Reinstall the print server.
- 4 Verify that the configuration of the connecting network device (such as a 10/100TX network switch) matches. For example, to set the print server for 100TX Full-duplex operation, the port on the network switch must also be set for 100TX Full-duplex operation.
- 5 Turn the printer off and back on and check the print server operation. If the print server fails to link, contact a local authorized HP dealer or service representative.

Step 10: Understanding the Software

CD-ROMs are included with this printer. CD-ROM1 contains the printer software; CD-ROM2 contains the online user's guide and the software needed to read the guide—Adobe™ Acrobat Reader (Acro32.exe is on the root directory).

Structure of CD-ROM1

The following files are on the root directory of the CD-ROM labeled CD-ROM1:

- HPSetup.exe
- Setup.exe

Directories on the compact disc labeled CD-ROM1:

Directory	Subdirectory 1	Subdirectory 2	Subdirectory 3
\<operating system> (for example, \WIN95, \WINNT, and so forth)	\<language> (for example, \ENGLISH, \DANSK, \DEUTSCH, and so forth)	\DISK1, \DISK2 . . . \DISK7	files (\DISK1 contains SETUP.EXE)
		\PCL	\DISK1 (contains OEMSETUP.INF)
		\PS	\DISK1 (contains OEMSETUP.INF)
		\JETADMIN	\DISK1, \DISK2, \DISK3, \DISK4

Note

Depending on the operating system in use, some of the directories might not be accessible. For example, if you are using Microsoft Windows 95, you will not be able to access the Macintosh directory.

Installing the Software

For printers with the optional HP JetDirect internal print server, you might have to set certain network parameters depending upon the network configuration. For most networks, you can configure these parameters from the HP JetAdmin software included on CD-ROM1. For more information about how to set network parameters in the printer control panel, see the online user's guide.

For information about sharing the printer through the parallel port connection, see the computer's documentation.

- For Microsoft Windows network installation instructions, see “Step 11: Windows Network Installation.”
- For IBM LAN server network installation instructions, see “Step 12: IBM LAN Server Network Installation.”
- For Macintosh network installation instructions, see “Step 13: Macintosh Network Installation.”

A variety of the following operating systems are also supported by this printer, but the software must be obtained separately:

- HP-UX
- SunOS
- Solaris

To order the software, call your operating system software vendor or contact HP through CompuServe, the World Wide Web, HP Distribution, HP Bulletin Board Service (BBS), or HP FIRST. See the quick reference guide or online user’s guide for addresses, phone numbers, and URLs of these services.

Accessing the Online User’s Guide

The online user’s guide and the software needed to read the guide—Adobe™ Acrobat Reader—can be installed on your computer’s hard disk or can be read from the CD-ROM drive.

The reader software allows you to scroll through the online user’s guide, by pressing **Page Up** and **Page Down** or by using a mouse to click the scroll bar.

Additionally, it offers fast access to subjects in which you are interested through its table of contents and its index. “Table of Contents” and “Index” should always be displayed on the left-hand side of the screen. The table of contents or index will be displayed automatically when you click them. When the table of contents or the index is displayed on the screen, simply click the subjects to display the information.

There are additional navigation tools and viewing options under the **View** and **Tools** menus to help you explore the online user’s guide.

To install the online user’s guide to your hard disk

- 1 Insert the CD-ROM labeled CD-ROM2 into the CD-ROM drive.
- 2 Follow the procedures you normally use to install programs from the CD-ROM drive (for example, in Windows 95, click **Start**, click **Run**, and type `D:\Setup.Exe` on the command line).

To access the online user's guide from the hard disk

- Microsoft Windows 95 users click **Start**, point to **Programs**, then **HP LaserJet**, and click the online user's guide icon.
- Microsoft Windows 3.1x users locate the HP LaserJet group and double-click the online user's guide icon.
- Macintosh users locate the HP LaserJet group and double-click the online user's guide icon.

To access the online user's guide from the CD-ROM

- 1 Insert the CD-ROM labeled CD-ROM2 into the CD-ROM drive
- 2 If you already have Adobe Acrobat Reader installed on your computer's hard drive, open Acrobat Reader and then open the online user's guide from your CD-ROM drive.
-Or-
If you do not already have Adobe Acrobat Reader, use your operating system's file management utility to locate the online user's guide and then double-click the online user's guide. Then locate Adobe Acrobat Reader and double-click Adobe Acrobat Reader.

Additional Information

Information that was not available when this guide was printed can be found in the readme file, which is copied onto the hard disk during installation.

Step 11: Windows Network Installation

In Microsoft Windows 95 and Windows NT® 4.0, the installation software detects both the version of Windows that is in use and the language that is selected in the operating system. The installation software then installs printer drivers and printing software that are appropriate for the system.

For Novell NetWare networks, install the software on the workstation. For Windows NT networks with a client server, install the software on the server. For Windows 95 peer-to-peer networks, install the software on all workstations that need access to the printer.

The installation software does not support shared Windows 3.1 environments.

To install the Windows printer software for system administrators

- 1 Depending on the environment, log onto the workstation or log onto the server with Supervisor or Administrator privileges.
- 2 Quit all applications, virus checkers, and TSR (terminate stay resident) programs. These programs can be turned back on after the installation.
- 3 Insert the CD-ROM into the CD-ROM drive.
- 4 In Windows 3.1, choose **Run** from the **File** menu.
- Or -
In Windows 95 or NT 4.0, click **Start**, then click **Run**.
- 5 Type `D:\Setup.exe` on the command line. (This assumes that the CD-ROM drive is the D drive.)
- 6 Click **OK**.
- 7 To install printer software for the language and version of Windows on the computer, click **Continue**.
To install printing software in another language, click **Exit** and use the “Structure of CD-ROM1” section in “Step 10: Understanding the Software” to find the path for the language you want to install. For example, to install printing software for Windows 95 in Spanish, the path is `D:\Win95\Espanol\Disk1\Setup.exe`.
- 8 Choose an installation type that fits your needs.

Installation Type	Components Installed
Minimal Installation	PostScript drivers only
Typical Installation	PCL and PostScript drivers, HP toolbox
Custom Installation	Allows you to choose components

- 9 If you do not already have a port set up, choose **LPT1** when prompted to choose a port for the printer. You can assign the correct port when you configure the printer on the network.

Configuring the Printer on the Network

Before you can use the printer, configure it on the network. HP recommends that you use a printer management utility such as the HP JetAdmin software, PCONSOLE, or NWADMIN. Configuring the printer on the network involves steps such as setting up a print queue or port.

To configure the printer, see the information for this network contained in the *HP JetDirect Print Server Software Installation Guide*.

The printer can also be configured in the printer control panel. To configure the printer in the printer control panel, see the online user's guide.

Distributing the Printer Software to Network Clients

Before a client can print to the printer, the printer software must be installed on the client's workstation. Rather than distributing the compact disc to each client, disk images of the installation software can be placed in a public directory or onto diskettes. The installation software's **Disk Copy** lets you copy disk images for Windows operating systems to a designated directory.

When **Disk Copy** is used, the installation software automatically detects the operating system (language and version of Windows) that is operating on the workstation and defaults to that operating system.

To create disk images for a different language or operating system, either change to a workstation that uses that operating system and run **Disk Copy** from there, or use a different tool to create the disk images. Use a file management tool such as Windows File Manager or XCOPY to copy disk images. Use the "Structure of CD-ROM1" section in "Step 10: Understanding the Software" to determine the location of the disk images on the CD-ROM. For example, to copy disk images for Windows 95 in Spanish, the path on the CD-ROM is `d:\Win95\Espanol\`.

Creating Disk Images with Disk Copy

- 1 Insert the CD-ROM into the CD-ROM drive.
- 2 In the Windows 3.1x Program Manager, select **Run** from the **File** menu.
- Or -
In Windows 95 or NT 4.0, click **Start** then select **Run**.
- 3 Type `D:\Setup.exe` on the command line. (This assumes that the CD-ROM drive is the D drive.)
- 4 Click **OK**.
- 5 Click **Continue**.

- 6 When you are prompted to choose the method of installation, click **Disk Copy**.
- 7 Click **Browse** to assign a path to the drive and directory to which you want to copy.
- 8 Click **Continue** and follow the instructions on the screen.

Installing the Printer Software for Network Clients

Before network clients can print to the printer, the printer's software must be installed on their workstations. The installation procedures are similar to the installation procedures for system administrators. Install the software by running Setup.exe from the root directory of the CD-ROM or from a disk image copied with **Disk Copy**.

- To install network client software, choose **Typical Installation**.
 - Software for Windows 3.1 and Windows 95 includes the PCL and PostScript drivers, HP FontSmart, and HP Toolbox.
 - Software for Windows NT includes the PCL and PostScript drivers, HP FontSmart, and HP Toolbox.

Note

Do not install the PCL or PostScript drivers on workstations that connect to Windows NT servers when you install other network client software. Clear the PCL and PostScript Driver check boxes in the **Components** list during the Custom Install. The drivers will be installed from the server when you connect to a network printer (later in this section).

Note

To install the network client software onto a Windows NT workstation, you must have administrator privileges on that workstation.

- For a minimal installation on a Windows 3.1 or 95 workstation, use the minimal installation option in the installer.

On a peer-to-peer network, users who want access to the network printer should install the HP JetAdmin software on their workstations. For more information, see the chapters on peer-to-peer networks in the *HP JetDirect Print Server Software Installation Guide*.

Connecting Network Clients to the Printer

After installing the software on a workstation, you must connect workstation to the printer.

- Workstations in Windows 95 can be connected to the print server or directly to the printer.
- Workstations in Windows NT and Windows 3.1 can be connected to the print server.

To connect workstations to the print server

Connect the printer drivers to the printer on the proper port.

- In Windows 3.1, double-click **Printers** in the Control Panel, then select **Connect** to connect the printer driver to the network. If the network port is not visible in the **Ports** list, then click **Network** and complete the **Connect to Network** dialog box.
- In Windows 95, select the printer in the **Printers** folder. Then from the **File** menu, select **Properties**. Select the correct port on the **Details** tab. If the port is not present, click **Add Port** and browse for the correct path to the printer.
- When you connect to a network printer from a Windows NT workstation, the printer driver will be automatically installed if you use a Windows NT server. If the operating system is unable to install the driver from the server, you can install the driver from the CD-ROM. If you are prompted for the driver, browse for HPPRINT.INF in the WINNT\<<language>\CD1 subdirectory, where <language> is the language you are using.

Note

To connect to a network printer from a Windows NT workstation, you must have administrator privileges on that workstation.

In Windows NT, there are three options for connecting to a network printer:

- Open **Network Neighborhood** and locate the printer on the network. Drag and drop the printer's icon from **Network Neighborhood** to the **Printers** folder.
- Open **Network Neighborhood** and double-click the printer icon. Follow the instructions on the screen for connecting to a printer.
- Use the **Add Printer Wizard** in the **Printers** folder to connect to a network printer.

To connect Windows 95 and Windows NT 4.0 workstations directly to the printer

- 1 Click **Start**.
- 2 Click **Settings**.
- 3 Click **Printers**.
- 4 Right-click the icon for this printer to open a shortcut menu.
- 5 Click **Properties** on the shortcut menu.
- 6 Click the **Details** tab.
- 7 Click **Add Port**.
- 8 Select **Other** and highlight **HP JetDirect Port** by clicking it. This opens the "Add HP JetDirect Port Wizard."
- 9 Follow the instructions in "Add HP JetDirect Port Wizard" for TCP/IP printer or IPX/SPX printer.

For more information, see the *HP JetDirect Print Server Software Installation Guide*.

Step 12: IBM LAN Network Installation

Installing the Printer Software for IBM LAN Server 4.x

For IBM LAN Server 4.x networks, install the software on workstations or on the server.

To install IBM LAN Server printer software for system administrators

- 1 Verify the system requirements by referring to the *HP JetDirect Print Server Software Installation Guide*.
- 2 Quit all applications.
- 3 Insert the CD-ROM into the CD-ROM drive.
- 4 Display the OS/2 command window by completing the following steps:
 - a Double-click **OS/2 System**.
 - b Double-click **Command Prompts**.
 - c Double-click **OS/2 Window**.
- 5 At the OS/2 command prompt, select the CD-ROM drive, the \OS2\Jetadmin\directory, and the subdirectory for the language you want.
- 6 Copy the software to the computer's hard drive and extract the files.

Note

The following instructions assume you chose the \OS2\Jetadmin\English\ subdirectory.

- 7 Use the **Jetinst** command to start the installation of JetAdmin for OS/2:

```
Jetinst <sourcedrive:> <bootdrive:> <option>
```

where

```
<sourcedrive:>  points to a directory containing these install files  
<bootdrive:>   is the OS/2 boot partition where you want this software  
<option>       is HP to install as a print server (default)  
                - Or -  
                CLIENT to install as a client
```

For example, from the [D:\OS2\Jetadmin\English>] prompt, you might enter: `Jetinst D: C: HP`

- 8 Wait for the system to respond and then follow the instructions on the screen.

Note

Pmspl.dll must be a version dated September 23, 1996, or later.

Configuring the Printer on the Network

Before you can use the printer, you must configure it on the network by using a printer management utility such as the HP JetAdmin software. Configuring the printer on the network involves steps such as setting up a port.

To configure the printer, see the information for this network contained in the *HP JetDirect Print Server Software Installation Guide*.

Note

Make sure the correct protocol stack has been configured for your network adapter (for example, DLC or TCP/IP).

Distributing the Printer Software to Network Clients

Before a client can print to the printer, the printer software must be installed on the client's workstation. Rather than distributing the CD-ROM to each client, disk images of the installation software can be placed in a public directory or onto diskettes.

Use a file management tool to copy disk images. Use the "Structure of CD-ROM1" section in "Step 10: Understanding the Software" to determine the location of the disk images on the CD-ROM.

Installing the Printer Software for Network Clients

Use the following information to install the OS/2 PCL driver or OS/2 PostScript driver on OS/2 systems (versions 2.0 with Service Pak or later of the OS/2 operating system).

To install a driver if a printer was NOT selected during the OS/2 installation

- 1 Double-click the **Templates Folder** in the OS/2 system folder.
- 2 Using the right mouse button, drag the **Printer** template to the desktop. The "Create a Printer" window opens.
- 3 In the **Name** field, type a name for the printer.
- 4 Click the port to which the printer is connected.
- 5 Click **Install new printer driver**. A window appears with a list of the printer drivers that are shipped with OS/2.
- 6 Click **Other printer driver**.
- 7 Insert the CD-ROM into the CD-ROM drive.
- 8 In the **Directory** field, type:
D:\OS2\Drivers\English\`<driver>`

(This assumes that the CD-ROM drive is the D drive and that you are installing the English driver.)

For <driver>, type: PCL or PS.

- 9 Click **Refresh**. Printer drivers appear in the window.
- 10 Select the **HP Color LaserJet 8500** driver.
- 11 Click **Install**.

To install a driver if the printer was selected during the OS/2 installation

- 1 Right-click the printer icon on the desktop.
- 2 Select **Settings** or **Properties**.
- 3 Click the **Printer Driver** tab.
- 4 Right-click one of the printer driver objects.
- 5 Click **Install**.
- 6 Select **Other OS/2 printer driver**.
- 7 Insert the CD-ROM into the CD-ROM drive.
- 8 In the **Directory** field, type:
D:\OS2\Drivers\English\<driver>
(This assumes that the CD-ROM drive is the D drive and that you are installing the English driver.)
For <driver>, type: PCL or PS.
- 9 Click **Refresh**. Wait until the window fills with printer drivers.
- 10 Select **HP Color LaserJet 8500**.
- 11 Click **Install**.

Connecting Network Clients to the Printer

After installing the end-user software on a client workstation, you must connect the printer drivers to the printer on the proper port.

Step 13: Macintosh Network Installation

Installing the Macintosh Printer Software

The Macintosh printer driver for this printer supports system version 7.0 or later.

For an EtherTalk or LocalTalk network, install the software on each workstation. The installation procedures are the same for an administrator and a client workstation. The Mac OS portion on the compact disc contains an installer program for each language.

Find the language that is appropriate for the operating system and then use the installer program for that language.

To install printer software for system 7.5 or later

- 1 Restart the computer while holding down the space bar. This opens the Extensions Manager.
- 2 From the Extensions Manager, disable all extensions except the ones needed to run the CD-ROM drive.
- 3 Close the Extensions Manager.
- 4 Insert the CD-ROM into the CD-ROM drive.
- 5 Double-click **HP Color LaserJet 8500 Printer Installer** for your language and then follow the instructions on the screen.
- 6 After you complete the installation, restart the computer while holding down the space bar.
- 7 Open the Extensions Manager and re-enable the extensions you disabled in step 2 above.
- 8 In **Chooser**, select **HP Color LaserJet 8500**. (For instructions, see “Connecting Network Clients to the Printer” later in this section.)

To install printer software for system 7.0 or 7.1

- 1 Insert the compact disc into the CD-ROM drive.
- 2 Copy the **HP Color LaserJet 8500 Printer Installer** icon for your language to the hard disk by dragging the installer’s icon onto the hard disk’s icon or onto the Macintosh desktop.
- 3 Remove the CD-ROM from the CD-ROM drive.
- 4 Restart the computer while holding down **Shift**. This disables all extensions.
- 5 Install the software from the hard disk by double-clicking **Installer**.
- 6 Follow the instructions on the screen.
- 7 After you complete the installation, restart the computer.
- 8 Drag the **HP Color LaserJet Printer Installer** icon to the **Trash**.
- 9 In **Chooser**, select **HP Color LaserJet 8500**.

Connecting Network Clients to the Printer

If you are not using a print spooler or a print queue, follow the directions below to connect the printer drivers to the printer automatically. If you are using a print spooler or if the automatic setup is unsuccessful, follow the directions below to configure the printer driver manually.

To connect to the printer automatically

- 1 From the **Apple** menu, select **Chooser**.
- 2 From the list of icons along the left side of **Chooser**, click **HP LaserJet**.
- 3 In the **AppleTalk Zones** box, click the zone where the printer is located (if applicable).
- 4 From the list of printer names along the right side of **Chooser**, select the name of the printer (even if it is the only one that appears).

Note

You might have to print a configuration page to determine the printer's AppleTalk name.

- 5 Click **Setup**. A status dialog box appears while the printer driver attempts to communicate with the printer.
- 6 If the setup is successful, you will be returned to **Chooser** and an icon appears next to the selected printer. Close **Chooser**.
- Or -
If setup was not successful, go to the procedure below.

To configure the printer driver manually

- 1 From the **Apple** menu, select **Chooser**.
- 2 From the list of icons along the left side of **Chooser**, click **HP LaserJet**.
- 3 In the **AppleTalk Zones** box, click the zone where the printer is located (if applicable).
- 4 From the list of printer names along the right side of **Chooser**, select the name of the printer (even if it is the only one that appears).
- 5 Click **Setup**.
- 6 Click **Select PPD**.
- 7 From the list of PPD files, click **HP Color LaserJet 8500 Printer**.
- 8 Click **Select**.
- 9 Click **Configure**.
- 10 Enter the appropriate selections for the printer's installed options and click **OK**.
- 11 Click **OK** to complete the setup. An icon appears next to the name of the printer.
- 12 Close **Chooser**.

Configuring the Printer on the Network

Configure the printer in one of two ways:

- Print directly to the printer through EtherTalk.
- Print through the network by printing to a print queue. Set up the print queue using the network software.

The HP LaserJet Utility allows printer settings such as printer name and preferred zone to be configured from the Macintosh system. HP recommends that only system administrators use the printer configuration capabilities of this utility.

If the printer is to be serviced by a print spooler, set up the printer's name and zone before configuring the spooler to capture the printer.

Distributing the Printer Software to Network Clients

Before a client can print to the printer, the printer software must be installed on the client's workstation. Rather than distributing the CD-ROM to each client, disk images of the installation software can be placed in a public directory or onto diskettes.

Use a file management tool to copy disk images. Use the "Structure of CD1" section in "Step 10: Understanding the Software" to determine the location of the disk images on the compact disc.

Installing the Macintosh Printer Software for Network Clients

The installation procedures are the same for an administrator or a client workstation. Follow the instructions detailed in "Installing the Macintosh Printer Software" at the beginning of this section.

Troubleshooting Checklist

If the printer does not appear to be functioning correctly, check the following items:

Problem or Error Message	Solution
The printer control panel display is blank.	<p>Make sure the printer's power switch is on.</p> <p>The printer might be in Power Save mode. Press Go.</p> <p>Make sure all power cables are securely attached and plugged into a grounded power source.</p>
The printer control panel displays OFFLINE	Press Go .
Printer control panel displays EIO 1 INITIALIZING.	<p>Either no cable, a bad cable, or only a LocalTalk cable is attached to the HP JetDirect internal print server.</p> <p>For LocalTalk connections, the message should disappear after approximately 5 minutes, during which normal printing is possible. Check the cable connection.</p> <p>The HP JetDirect internal print server might be improperly installed. Reinstall the print server.</p> <p>There might be a network problem. See the <i>HP JetDirect Print Server Software Installation Guide</i>. Also, see "Step 4: Connecting the Printer to a Network" about how to add 50-Ohm terminators, if necessary.</p>
Cannot print from the computer using a parallel cable.	<p>The cable might be installed incorrectly, too long, or faulty. Remove the cable and reconnect it, making sure it is securely connected. Try another parallel cable under 10 feet (approximately 3 meters) in length. Replace the cable with an HP parallel cable (part number C2946A) or equivalent.</p> <p>The wrong port might be selected or rerouted. Check the MODE statement in the AUTOEXEC.BAT file. In Windows 3.1, look in the Control Panel to see which port is selected. In Windows 95 or Windows NT, check the Parallel Port Capture.</p> <p>There might be a bad port on the computer or printer. Try using a different port or, if possible, a different computer or printer to isolate the problem.</p>
Cannot print using a sharing device.	Try to isolate the cause of the problem. Test the printer using a cable connected directly from the computer to the printer. Contact the sharing device vendor for troubleshooting steps.
Random "garbage" characters are printing.	The interface cable might be bad or loose. Check the cable and connection. Try another parallel cable under 10 feet (approximately 3 meters) in length. Replace the cable with an HP Parallel cable (part number C2946A) or equivalent.
Printer control panel displays CLEAR PAPER JAM.	Media might be jammed in one of several locations. Clear all jams according to instructions in the quick reference guide.
Printer control panel displays an unfamiliar message.	Turn the printer off, then back on. If the message does not clear, see the online user's guide for more information.

For more printer control panel messages and troubleshooting solutions, see the online user's guide.



Copyright© 1997
Hewlett-Packard Co.
Printed in USA 10/97

Manual Part No.
C3983-90901



Printed on at least
50% Total Recycled Fiber with
at least 10% Post-Consumer Paper



C3983-90901