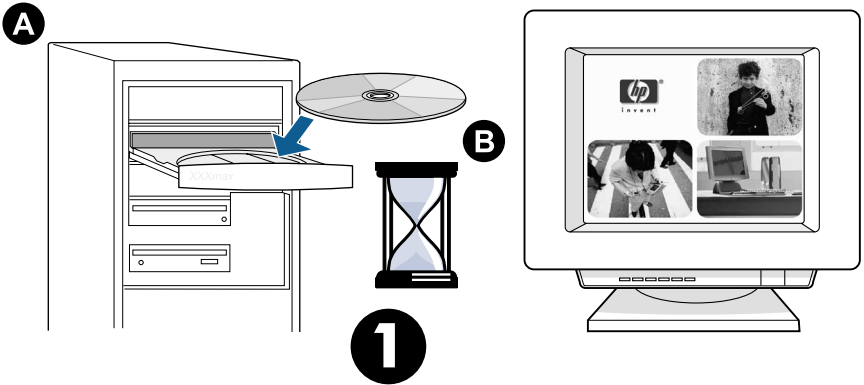




hp LaserJet 1000

getting started guide

**important !/ 重要! / ข้อมูลสำคัญ !/
penting !/ quan trọng !/ 중요 !**



Important: Install Software First

1. To install the software, load the CD-ROM and follow the instructions on the screen.
2. After the software installation is complete, set up the printer.
See steps 2 through 7 in the graphical instructions.

重要：請務必先安裝軟體

1. 要安裝軟體時，請將光碟裝入光碟機，然後按照螢幕上的說明繼續執行。
2. 完成軟體的安裝後，請繼續安裝印表機。
參閱步驟 2 到 7 的圖形說明。

สำคัญ โปรดติดตั้งซอฟต์แวร์นี้ก่อน

1. ในการติดตั้งซอฟต์แวร์ ให้โหลดซีดีรอมในไดรฟ์ และปฏิบัติตามคำแนะนำบนหน้าจอ
2. หลังจากติดตั้งซอฟต์แวร์แล้ว ให้ติดตั้งเครื่องพิมพ์ โปรดดูขั้นตอนที่ 2 ถึง 7 ในคำแนะนำแบบกราฟิก

Penting, Instal Software Terlebih Dahulu

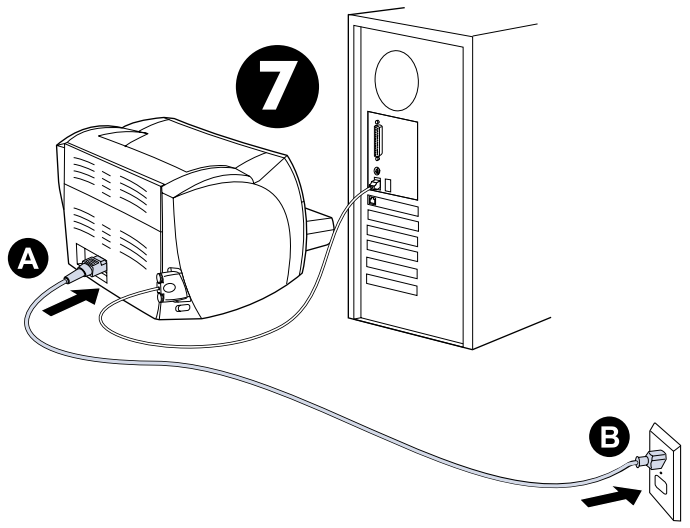
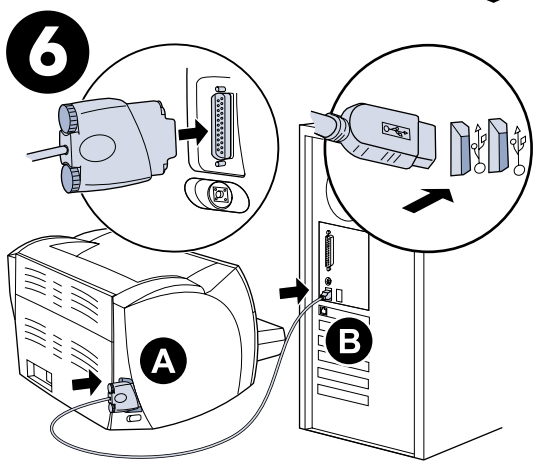
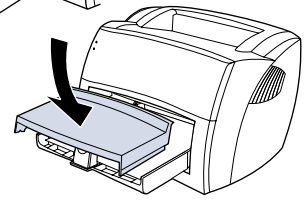
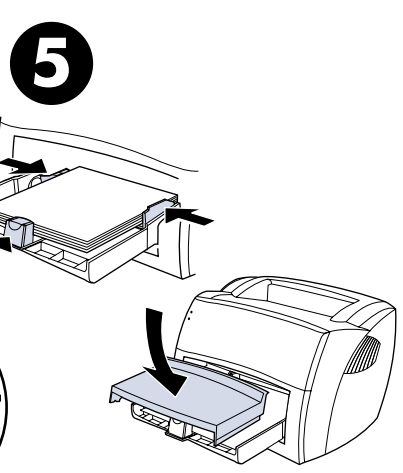
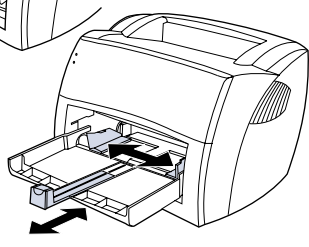
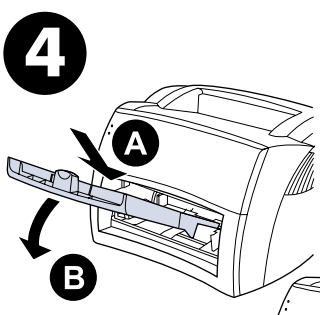
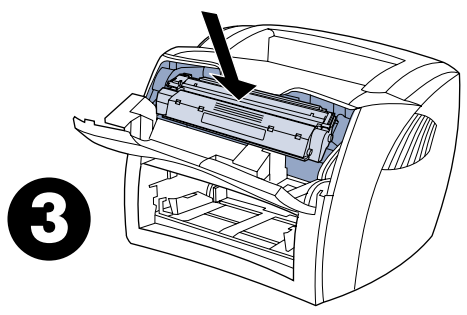
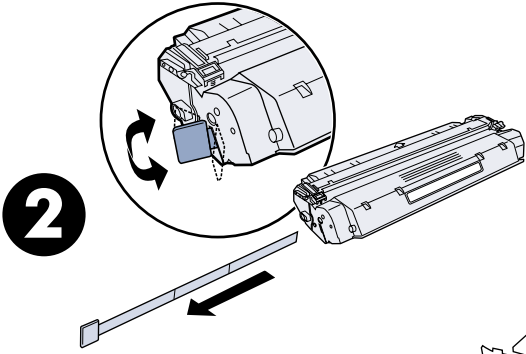
1. Untuk menginstalasi software, masukkan CD-ROM dan ikuti petunjuk yang ditampilkan di layar komputer.
2. Setelah instalasi software selesai, siapkan printer. Lihat butir 2 sampai 7 pada petunjuk bergambar.

Phaàn meàn caùi Đaët Đàu tieân quan trọng

1. Ủẹạ caùi Đaët phaàn meàm, Đaët Đóá CD-ROM vaọ vaọ thõic hieàn theo nhõõng hõõung daãn treån maựn hình.
2. Sau khi caùi Đaët xong phaàn meàm, caùi Đaët maựy in. Xem tộụ bõõuc 2 Đeán bõõuc 7 trong phaàn hõõung daãn baèng hình

중요한 소프트웨어 우선 설치

1. 소프트웨어를 설치하려면 CD-ROM을 넣고 화면의 지시 사항을 따릅니다.
2. 소프트웨어 설치를 완료한 후 프린터를 설정합니다. 그림으로 나타낸 과정의 2-7 단계를 참조하십시오.



New Hardware Found

In Microsoft Windows, if you get a message that states "New Hardware Found...", you can let windows install the necessary software. From the "New Hardware Found..." dialog, browse to the installation file (.inf file) on the CD. For additional assistance with your printer, see the online user guide on the CD or on the Web at www.hp.com/support/lj1000. If you need to contact HP, see the online user guide or the Web for support phone numbers.

發現新硬體

採用Microsoft Windows作業系統時，如果出現「發現新硬體…」訊息，則可讓Windows來安裝所需的軟體。從「發現新硬體…」對話方塊瀏覽尋找光碟上的安裝檔案(.inf檔案)。如需關於印表機的其他協助，請參閱光碟或位於<http://www.hp.com/support/lj1000>網站上面的線上版使用者手冊。如須連絡HP，請參閱線上使用者手冊或Web所列出的支援服務電話號碼。

New Hardware Found (พบฮาร์ดแวร์ใหม่)

ใน Microsoft Windows หากคุณได้รับข้อความ "New Hardware Found..." คุณสามารถให้วินโดวส์ติดตั้งซอฟต์แวร์ที่จำเป็นให้ จากไดอะล็อก "New Hardware Found..." ให้เลือกไฟล์การติดตั้ง (ไฟล์นามสกุล .inf) ในแผ่นซีดี สำหรับคำแนะนำเพิ่มเติมเกี่ยวกับเครื่องพิมพ์ โปรดดูคู่มือผู้ใช้แบบออนไลน์ในแผ่นซีดี หรือในเว็บ ที่ www.hp.com/support/lj1000 หากคุณต้องการติดต่อ HP โปรดดูหมายเลขโทรศัพท์ในคู่มือผู้ใช้แบบออนไลน์หรือในเว็บสำหรับการสนับสนุน

New Hardware Found menginstalasi

Di Microsoft Windows, jika Anda memperoleh pesan "New Hardware Found menginstalasi...", Anda dapat membiarkan windows software yang diperlukan. Dari dialog "New Hardware Found...", cari file instalasi (file .inf) yang ada di CD. Untuk bantuan tambahan, lihat petunjuk untuk pengguna online di CD atau kunjungi Web kami di www.hp.com/support/lj1000. Apabila Anda ingin menghubungi HP, lihat petunjuk untuk pengguna online atau kunjungi Web kami untuk memperoleh nomor telepon layanan bantuan.

Phaùt hieán Phaàn cöùng Môùi

Trong Microsoft Windows, nếu bạn nhận một thông báo "Phaùt hieán Phaàn cöùng Môùi", É bạn có thể Để cho windows cài Đặt phần mềm cần thiết. Tòy hoáp Đoái thoaii "Phaùt hieán Phaàn cöùng Môùi", truy cập Đển taáp tin cài Đặt (taáp tin .inf) trên Đóa CD. Úẹạ Đốóic hoặ trới theám veà maùy in, xem höòùng daãn söù dưng trớic tuyeán trên CD hoặc trang Web www.hp.com/support/lj1000. Neáu baïn caàn lieân heà vòui HP, xem muïc höòùng daãn söù dưng trớic tuyeán hoặc trang Web cho caùc soá Đieán thoaii cung caáp.

새 하드웨어 발견

Microsoft Windows에서 "새 하드웨어 발견..."이라는 메시지가 나타날 경우, Windows가 필요한 소프트웨어를 설치하도록 할 수 있습니다. "새 하드웨어 발견..." 대화 상자에서 CD의 설치 파일(.inf file)을 찾습니다. 프린터에 관한 추가 도움말은 CD의 온라인 사용 설명서를 참고하거나 웹 사이트 www.hp.com/support/lj1000 을 참조하십시오. HP 연락처는 온라인 사용 설명서나 웹 사이트에 나와 있는 지원 전화 번호를 참조하십시오.

Troubleshooting

- Refer to Chapter 6 of your Electronic User Guide.

疑難排解

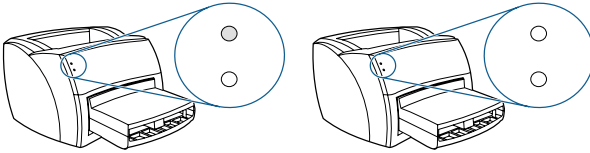
- 請參閱電子版使用者手冊的第 6 章

การแก้ไขปัญหา

- โปรดอ่านบทที่ 6 ในคู่มือผู้ใช้แบบอิเล็กทรอนิกส์

문제 해결

- 온라인 사용 설명서의 6장을 참조하십시오.



Jika lampu status paling atas menyala, printer sudah siap mencetak.

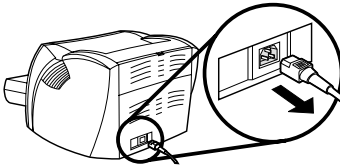
Jika tidak ada lampu status yang menyala, periksa kabel power dan koneksi kabel USB

PERINGATAN! Untuk menjamin keselamatan Anda ketika menangani printer, cabut kabel listrik printer.

Nếu đèn báo sáng, máy đã sẵn sàng in.

Nếu đèn báo không sáng, kiểm tra dây điện và các đầu nối dây cáp USB.

CẢNH BÁO! Hãy rút phích cắm máy in ra để bảo đảm an toàn khi sửa chữa bên trong máy in vì bất cứ lý do gì.



PERINGATAN! Pengaturan, penyetelan, atau penanganan yang tidak sesuai dengan petunjuk penggunaan akan menyebabkan bahaya radiasi.

PERINGATAN! Alkohol mudah terbakar. Jauhkan alkohol dan kain pembersih dari api. Sebelum Anda menutup printer dan menghubungkan kabel power, biarkan alkohol mengering terlebih dahulu.

CẢNH BÁO! Việc sử dụng các bộ điều khiển, điều chỉnh, hay qui trình thực hiện khác với các thao tác đã chỉ rõ trong sách hướng dẫn có thể dẫn đến việc phát ra các chất phóng xạ nguy hiểm.

CẢNH BÁO! Cồn là chất dễ cháy. Để cồn và vải vóc tránh xa nơi có lửa. Trước khi đóng máy in và cắm phích cắm vào ổ điện, bạn nên để cồn khô hoàn toàn.



i n v e n t

For More:

- Regulatory Information
- Important Safety Notices
- Detailed Installation and User Instructions

Refer to the HPLJ1000 electronic User Guide; or
www.hp.com/support/lj1000

สำหรับข้อมูลเพิ่มเติม:

- ข้อมูลเกี่ยวกับข้อบังคับต่างๆ
- ข้อมูลสำคัญเกี่ยวกับความปลอดภัย
- ข้อมูลการติดตั้งโดยละเอียดและคำแนะนำสำหรับผู้ใช้งาน

โปรดอ่านคู่มือผู้ใช้ HPLJ1000 แบบอิเล็กทรอนิกส์ หรือ
www.hp.com/support/lj1000

如需詳細的：

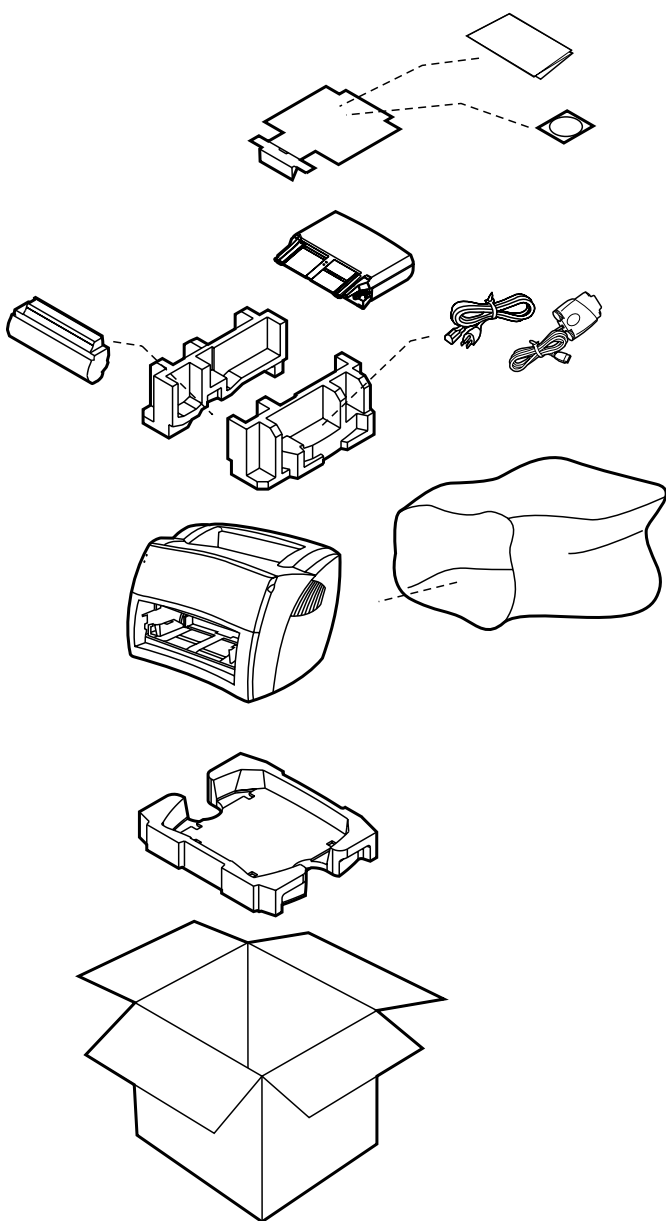
- 政府規章資訊
- 重要的安全注意事項說明
- 詳細的安裝和使用說明

請參閱電子版的 HPLJ1000 使用者手冊，或蒞臨
www.hp.com/support/lj1000

자세한 정보:

- 규정 정보
- 중요 안전 사항
- 자세한 설치 및 사용 지침서

HPLJ1000 온라인 사용 설명서 또는
www.hp.com/support/lj1000을
참조하십시오.



Copyright Information

© Copyright Hewlett-Packard Company 2001
All Rights Reserved. Reproduction,
adaptation, or translation without prior written
permission is prohibited, except as allowed
under the copyright laws.
Part number: Q1342A-90908
First Edition: October 2001

FCC Regulations

This equipment has been tested and found to comply with the limits for a Class B digital device, pursuant to Part 15 of the FCC rules. These limits are designed to provide reasonable protection against harmful interference in a residential installation. This equipment generates, uses, and can radiate radio frequency energy. If this equipment is not installed and used in accordance with the instructions, it may cause harmful interference to radio communications. However, there is no guarantee that interference will not occur in a particular installation. If this equipment does cause harmful interference to radio or television reception, which can be determined by turning the equipment off and on, the user is encouraged to try to correct the interference by one or more of the following measures: Reorient or relocate the receiving antenna. Increase separation between equipment and receiver.

Connect equipment to an outlet on a circuit different from that to which the receiver is located.

Consult your dealer or an experienced radio/TV technician.

Any changes or modifications to the printer that are not expressly approved by HP could void the user's authority to operate this equipment.

Use of a shielded interface cable is required to comply with the Class B limits of Part 15 of FCC rules.

Warranty

The information contained in this document is subject to change without notice. Hewlett-Packard makes no warranty of any kind with respect to this information.

HEWLETT-PACKARD SPECIFICALLY
DISCLAIMS THE IMPLIED WARRANTY OF
MERCHANTABILITY AND FITNESS FOR A
PARTICULAR PURPOSE.

Hewlett-Packard shall not be liable for any direct, indirect, incidental, consequential, or other damage alleged in connection with the furnishing or use of this information.

Trademark Credits

Microsoft ® , Windows ® , and Windows NT ® are U.S. registered trademarks of Microsoft Corporation. All other products mentioned herein may be trademarks of their respective companies

