

**Start**  
入门指南

**Hp** LaserJet 5100Le



---

# hp LaserJet 5100Le printer

---

start guide

© Copyright Hewlett-Packard  
Company 2002

All Rights Reserved.  
Reproduction, adaptation, or  
translation without prior written  
permission is prohibited,  
except as allowed under the  
copyright laws.

Publication number  
Q1863-90901

First Edition, May 2002

### **Warranty**

The information contained in  
this document is subject to  
change without notice.

Hewlett-Packard makes no  
warranty of any kind with  
respect to this information.

**WARRANTY ON THIS  
PRODUCT IS AVAILABLE IN  
CHINA, KOREA, AND  
TAIWAN.**

**HEWLETT-PACKARD  
SPECIFICALLY DISCLAIMS  
THE IMPLIED WARRANTY  
OF MERCHANTABILITY AND  
FITNESS FOR A  
PARTICULAR PURPOSE.**

Hewlett-Packard shall not be  
liable for any direct, indirect,  
incidental, consequential, or  
other damage alleged in  
connection with the furnishing  
or use of this information.

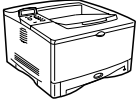
### **Trademark Credits**

ENERGY STAR and the Energy  
Star logo are U.S. registered  
marks of the United States  
Environmental Protection  
Agency.

Microsoft and Windows are  
U.S. registered trademarks of  
Microsoft Corporation.

---

## Introduction



Congratulations on your purchase of the HP LaserJet 5100Le printer! This printer (product number: Q1863A) is a 22 pages per minute (ppm) laser printer that comes standard with a 100-sheet multi-purpose Tray 1, a 250-sheet Tray 2, and 16 MB of memory. The printer is able to print full-bleed images on paper sizes up to A3 and 11 x 17 in (279 x 432 mm).

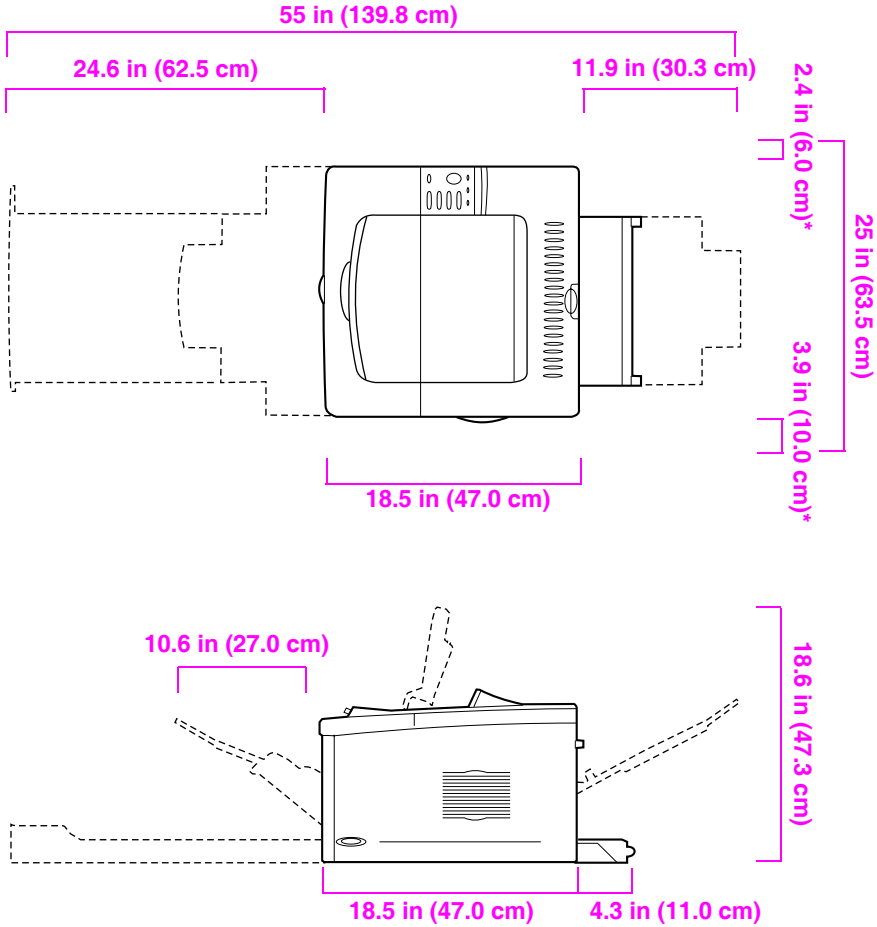
## Installation checklist

This guide will help you set up and install the new printer. For proper installation, please complete each section in order.

Unpack the printer	steps 1-4
Install and connect the printer	steps 5-13
Install printing software	step 14
Verify printer setup	step 15

# Step 1. Prepare printer location

## Printer Size



\* Space for ventilation.

Figure 1 HP LaserJet 5100Le printer dimensions (top and side views)

## Printer weight (without print cartridge)

HP LaserJet 5100Le printer: 50 lb (23 kg)

## Location requirements for the printer

---

- A sturdy, level surface for placement
- Space allowance around the printer, including 2.4 inches (60 mm) of space on the left side and 3.9 inches (100 mm) of space on the right side for ventilation
- A clean, well-ventilated environment
- No exposure to direct sunlight or chemicals, including ammonia-based cleaning solutions
- Adequate power supply (for 100-127 V models, at least 10.5 amps; for 220-240 V models, at least 5.3 amps)
- A stable environment—no abrupt temperature or humidity changes
- Relative humidity 20% to 80%
- Room temperature 50° to 91° F (15° to 32.5° C)



---

## Step 2. Check package contents

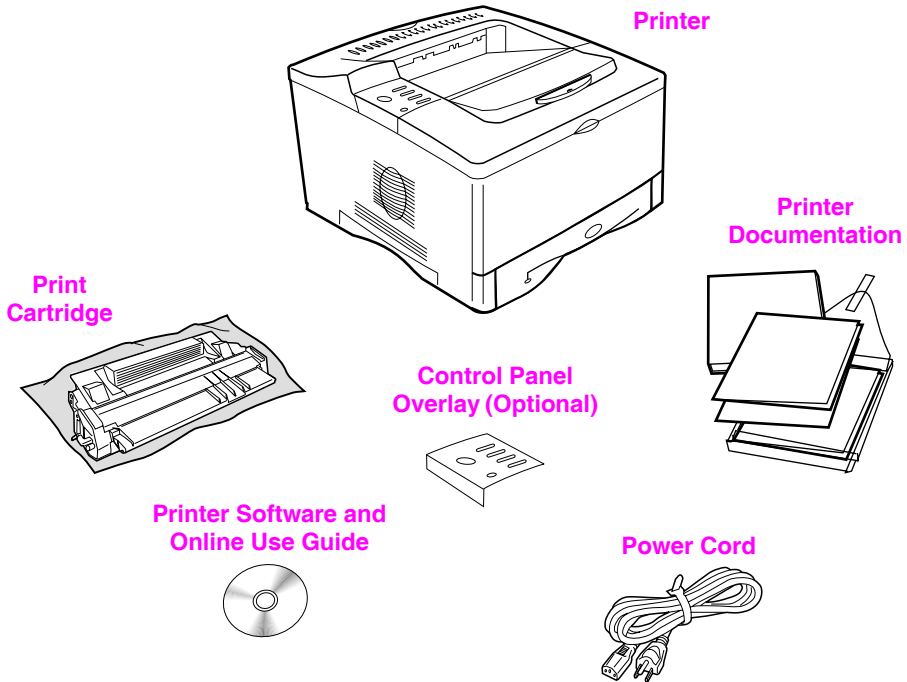


Figure 2 Package contents

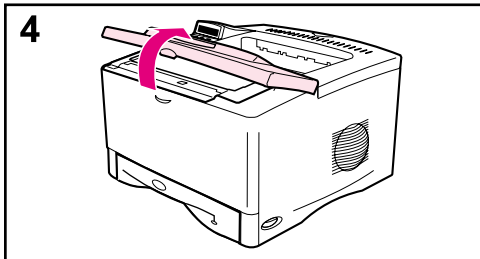
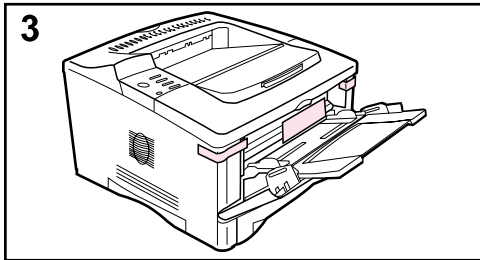
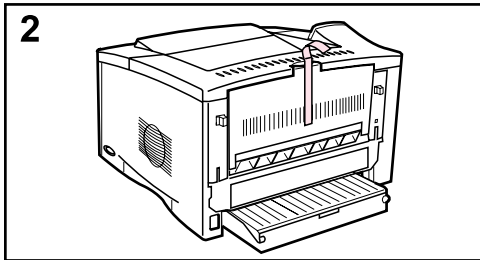
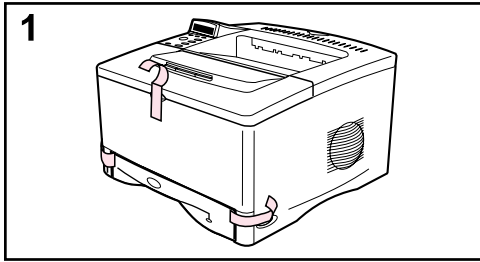
---

**Note**

A printer cable is not included in the package contents. See Chapter 1 of the online use guide for ordering information. (The online use guide is included on the compact disc included with the printer.)

---

## Step 3. Remove internal packaging



---

### Note

Save all packing material. You may need to repack the printer at a later date.

---

- 1 Remove the tape from the front of the printer.
- 2 Remove the tape from the back of the printer.
- 3 Open Tray 1 and remove the cardboard spacer and pieces of tape.
- 4 Open the top cover and remove the internal packing material.

## Step 4. Locate printer parts

The following illustrations give the location and names of the important printer parts.

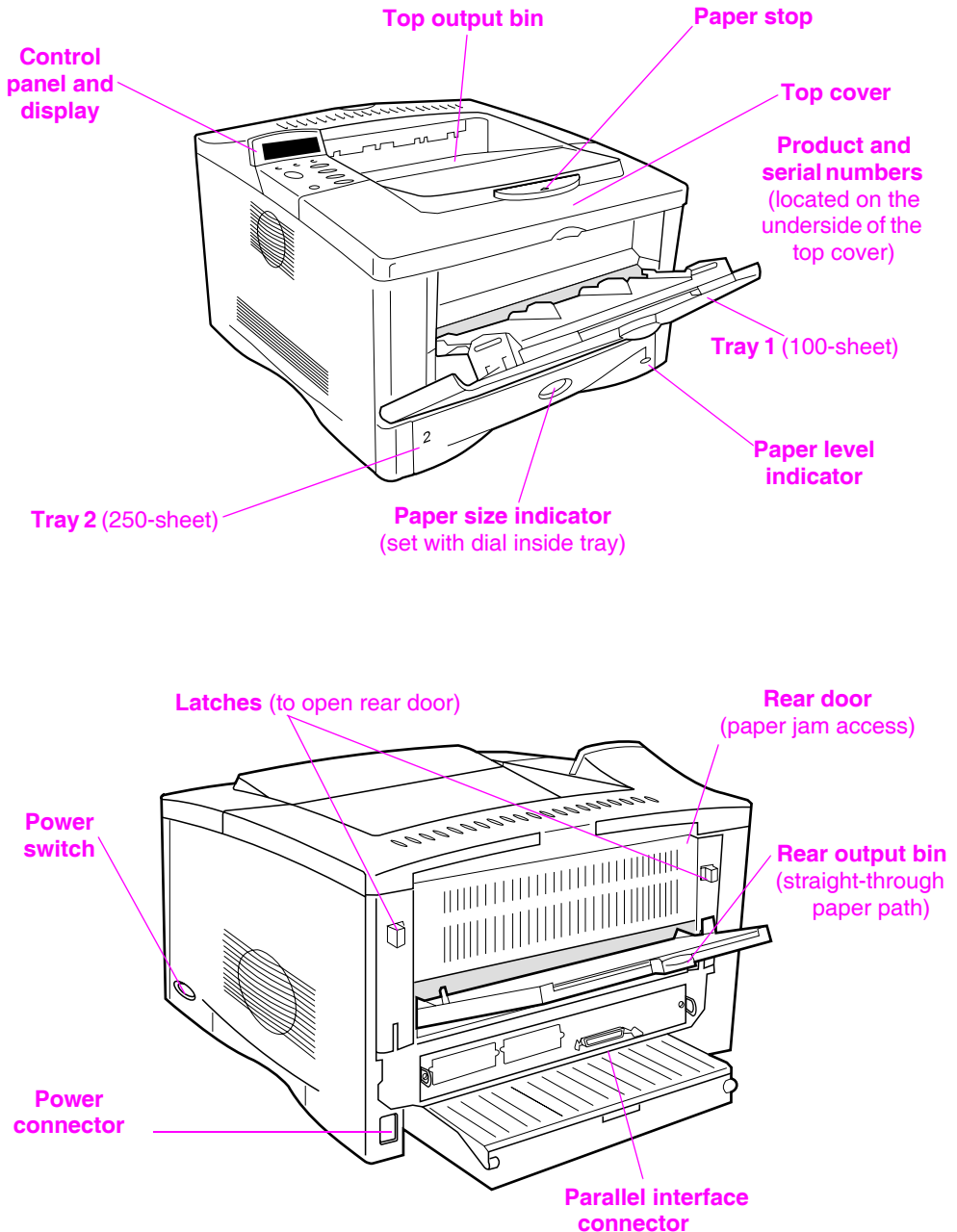
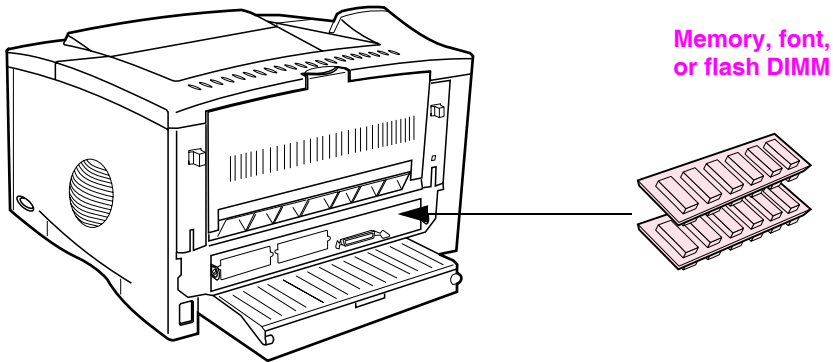


Figure 3 Printer parts (front and rear views)

---

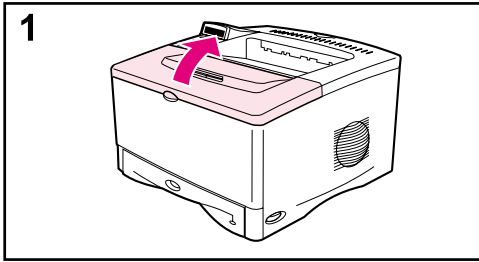
## Step 5. Install accessories

Install any accessories that you have purchased with the printer. See the online use guide for information on installation of the memory, font, or flash DIMM accessories.



**Figure 4** Optional accessories

## Step 6. Install print cartridge



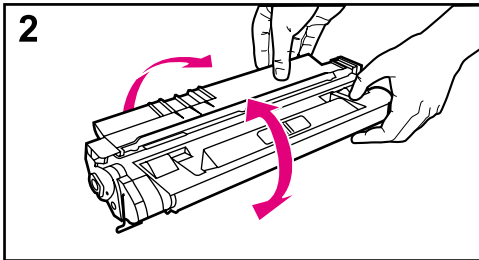
- 1 Open the printer's top cover. Remove the print cartridge from its packaging (save packaging for possible cartridge storage).

---

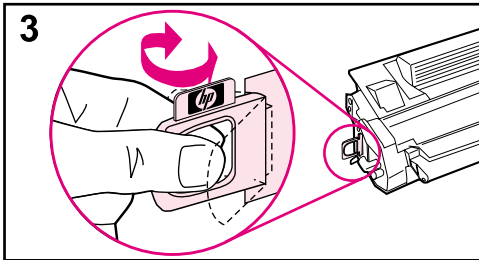
### Caution

To prevent damage to the print cartridge, do not expose it to light for more than a few minutes.

---

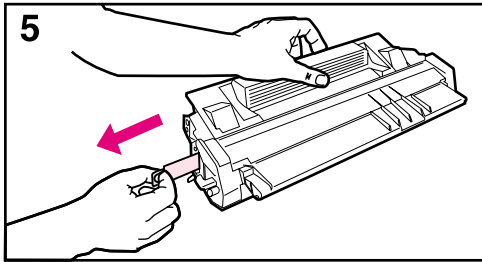


- 2 Rotate the cartridge and gently shake it from side to side to distribute the toner evenly inside the cartridge.



- 3 Locate the sealing tape tab on the end of the cartridge. Carefully bend the tab back and forth until it separates from the cartridge.

**Continued on the next page.**



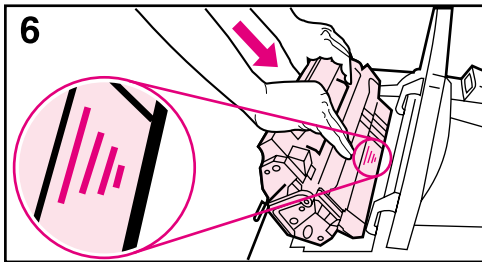
**4** Firmly pull the tab straight out from the cartridge to remove the entire length of tape. Avoid touching any black toner on the tape.

---

**Note**

If the tab separates from the tape, grasp the tape and pull it out of the cartridge.

---



---

**Note**

If toner gets on your clothing, wipe it off with a dry cloth and wash clothing in cold water. (Hot water sets toner into fabric.)

---

**5** Position the cartridge as shown with the arrow pointing into the printer. Slide the cartridge into the printer as far as it will go and close the top cover.

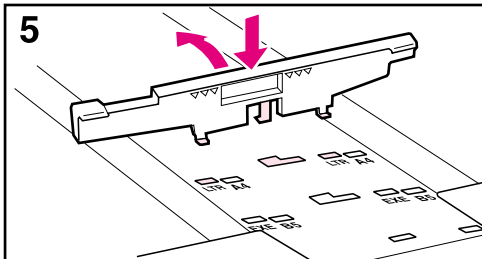
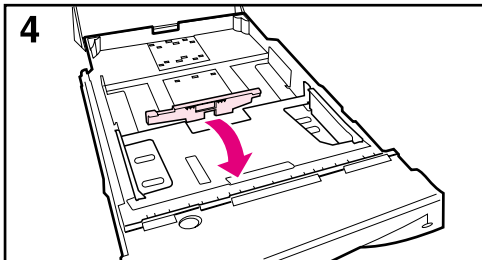
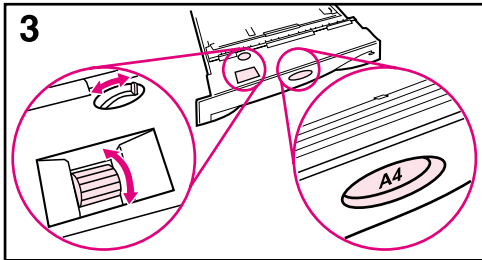
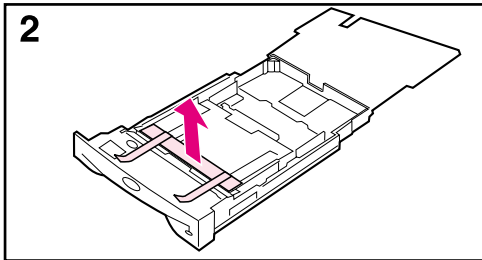
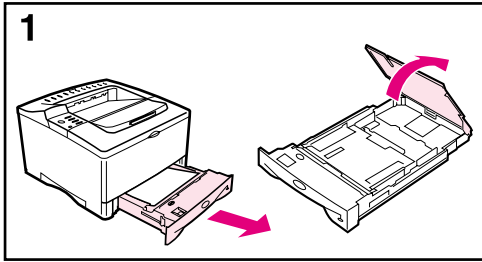
---

**Note**

If the print cartridge does not slide into the printer easily, make sure all packing material has been removed. Also, make sure the jam access plates inside the printer (identified with green handles) are in the down position.

---

## Step 7. Load Tray 2



1 Pull Tray 2 out of the printer and raise the tray cover.

2 Remove the packing cardboard and tape.

3 Set the dial in the tray to the desired setting so the printer will read the correct size of paper. Use the toggle switch to gain access to more sizes.

### Note

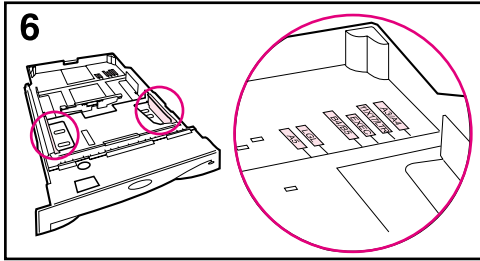
The paper size indicated by the dial in the tray must match the size of paper loaded in the tray. If these sizes do not match, the paper might jam or other errors might occur.

Setting the dial adjusts the printer's sensors, not the guides inside the tray.

4 To reposition the rear blue guide, tilt it toward the front of the tray and remove it.

5 Align the rear guide with the desired paper size. With the guide angled slightly toward the front of the tray, insert it into the appropriate holes. Rotate the rear guide upright until it snaps into place.

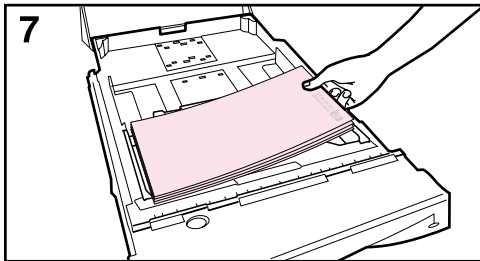
**Continued on the next page.**



**6** Slide the blue side guides to the desired paper size.

**7** Load paper into the tray.

**8** Make sure the paper is flat in the tray at all four corners and below the tabs on the guides.



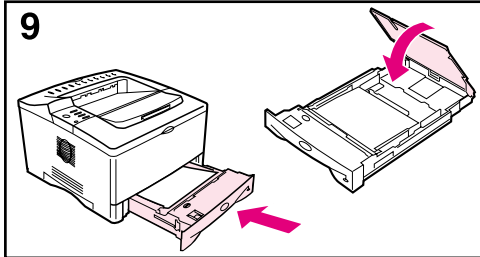
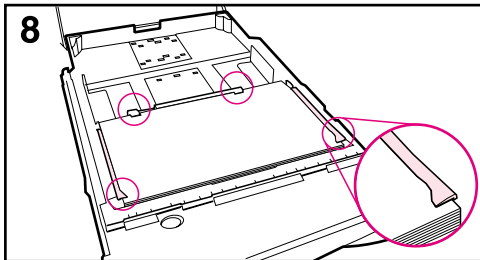
**9** Close the tray cover and slide the tray into the printer.

---

**Note**

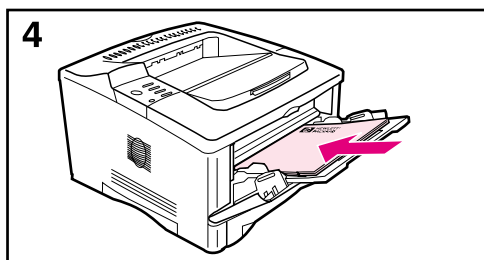
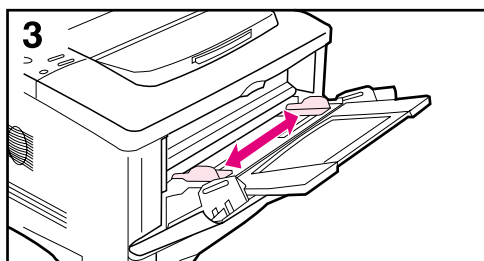
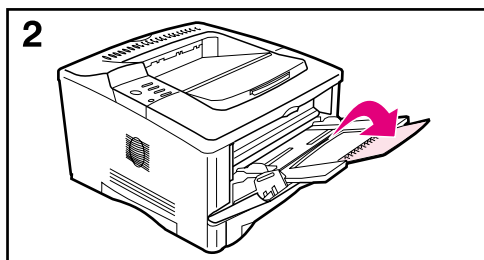
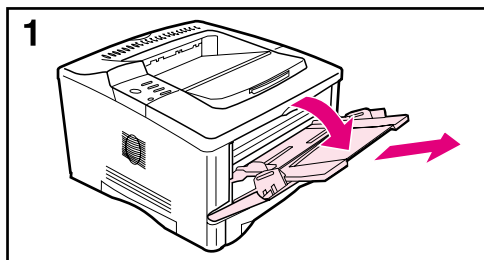
See the online use guide for instructions on loading and printing on custom-size paper.

---





## Step 8. Load Tray 1 (optional)



Tray 1 is a multi-purpose tray and holds up to 100 sheets of paper, approximately 10 envelopes, or 20 index cards.

---

### Note

Paper loaded in Tray 1 will be printed first unless the Tray 1 setting is changed from the printer control panel. To change the order in which trays are used, see the online use guide.

---

- 1 Open Tray 1 by pulling down on the top center of the door. Pull out the tray extension until it clicks into place.
- 2 Flip open the second tray extension if the paper is longer than 9 inches (229 mm).
- 3 Adjust the guides to the desired paper size.
- 4 Load paper. The paper should fit under the tabs on the guides.
  - Load letter or A4 paper with the long edge toward the printer.
  - Load legal, 11 x 17, or A3 paper with the short edge toward the printer.

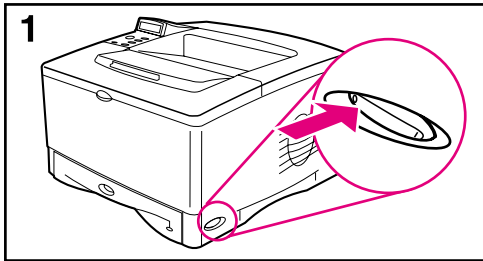
---

### Note

See the sections on letterhead, envelopes, and duplexing in the online use guide for proper orientation of specific jobs.

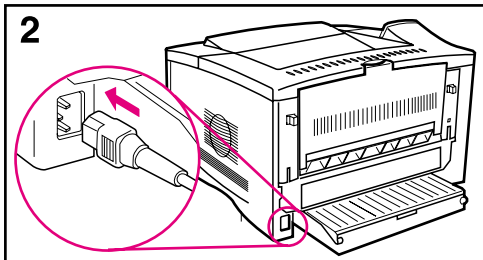
---

## Step 9. Attach power cord



1 Locate the power switch on the right side of the printer. Make sure the printer is turned off.

2 Connect the power cord to the printer and a grounded power strip or an AC outlet.

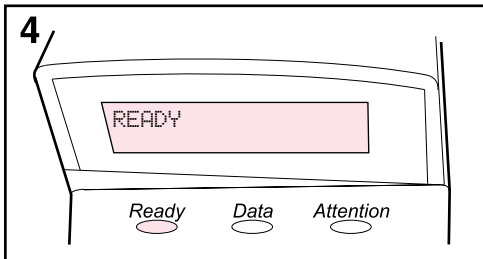
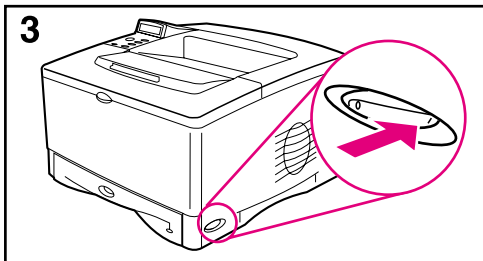


### Caution

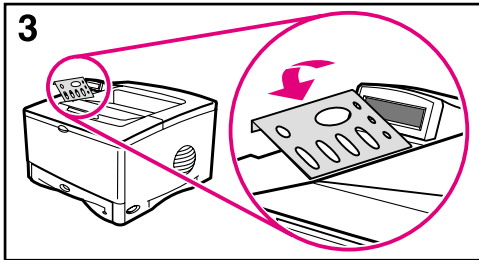
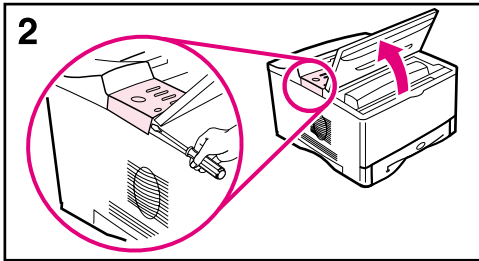
To prevent damage to the printer, use only the power cord shipped with the printer.

3 Turn the printer on.

4 After the printer warms up, the **READY** message should appear on the control panel display and the Ready light should remain on. If the **READY** message does not appear, see the problem solving chapter in the online use guide.



## Step 10. Change the control panel overlay (optional)



If necessary, use the following procedure to install the appropriate control panel overlay for your language.

- 1 Locate the control panel overlays in the output bin of the printer. (These overlays might have moved during shipping.)
- 2 If necessary, remove the overlay currently installed on the printer:
  - a Open the printer's top cover.
  - b Insert a thin, rigid object under the edge of the overlay, and then pull up on the overlay until it comes off.
  - c Close the top cover.
- 3 Place the desired control panel overlay onto the control panel and snap it into place.

---

## Step 11. Configure the control panel display language (optional)

By default, the control panel on the printer displays messages in English. If necessary, set the printer to display messages and print configuration pages in another supported language.

- 1 Turn the printer off.
- 2 Hold down **[Select]** while turning on the printer.
- 3 When `SELECT LANGUAGE` appears in the LED display, release **[Select]**.
- 4 After the printer has finished initializing, `LANGUAGE = ENGLISH` will appear in the LED display.
- 5 When `LANGUAGE = ENGLISH` appears in the display, press **[- VALUE +]** to scroll through the available languages.
- 6 Press **[Select]** to save the desired language as the new default.
- 7 Press **[Go]** to return to `READY`.
- 8 To activate your new language choice, turn the printer off and then turn the printer on.
- 9 The LED display text should now appear in the selected language.

---

## Step 12. Connect printer cables

The HP LaserJet 5100Le printer includes one interface: an IEEE-1284 parallel port.

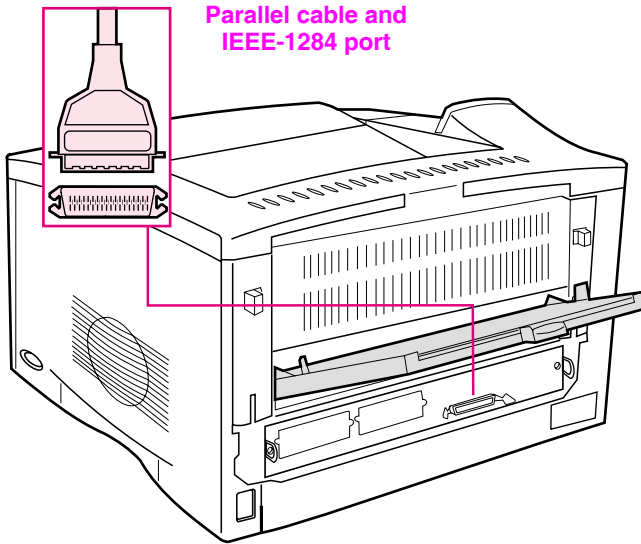
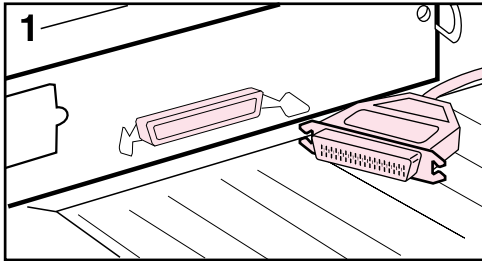


Figure 5 Interface ports

## Connecting parallel cable



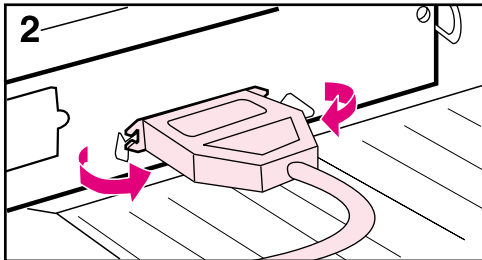
To ensure reliability, use an IEEE-1284 bi-directional parallel cable. (These cables are clearly marked with "IEEE-1284.") Only IEEE-1284 cables support all of the printer's advanced features.

---

### Caution

Make sure the printer is turned off.

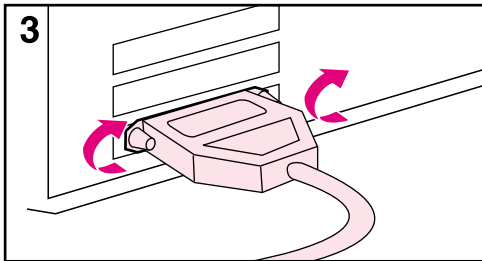
---



**1** Connect the parallel cable to the parallel port.

**2** Snap the wire clips in place to secure the cable to the printer.

The cable should install easily. If installation is difficult, check the cable orientation.



**3** Connect the other end of the cable to the proper connector on the computer.

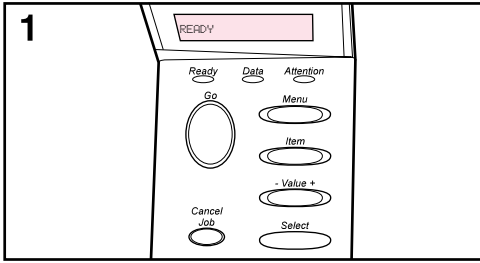
---

### Note

See the online use guide for information on ordering a two- or three-meter IEEE-1284 parallel cable.

---

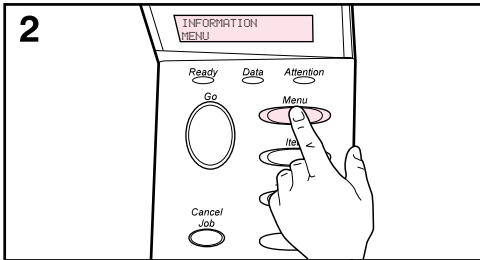
# Step 13. Test the printer



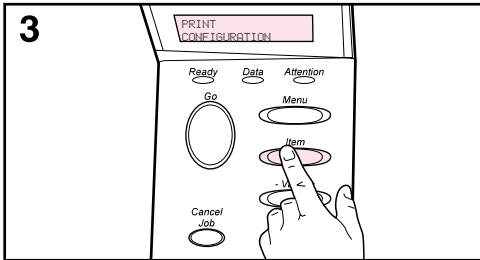
Print a configuration page to make sure the printer is operating correctly.

**1** Make sure that the printer is on and the **READY** message appears.

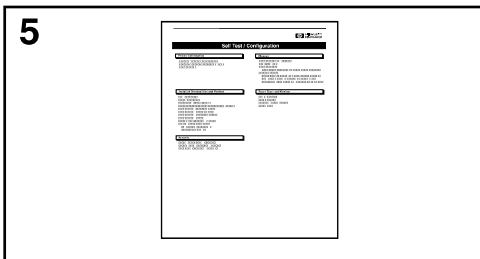
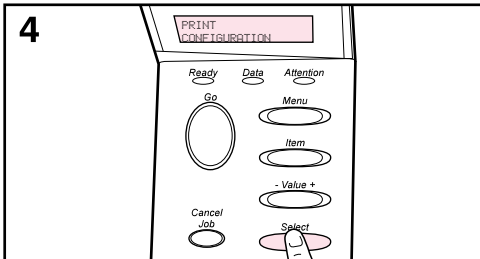
**2** Press **[Menu]** until the display reads **INFORMATION MENU**.



**3** Press **[Item]** until the display reads **PRINT CONFIGURATION**.



**4** Press **[Select]** to print the configuration page.



**5** The configuration page shows the printer's current configuration.

---

## Step 14. Install printing software

The printer comes with printing software on a compact disc. The printer drivers on this compact disc must be installed to take full advantage of the printer features. In addition, the online use guide for the printer is located on this compact disc.

If your computer does not have a CD-ROM drive but you have access to one, you can copy the compact disc onto diskettes for installation on your computer.

The most recent printer drivers are available on the Internet at <http://www.hp.com/support/lj5100>. Depending on the configuration of Microsoft® Windows®-driven computers, the installation program for the printer software automatically checks the computer for Internet access to obtain the latest software.



## Installing Windows printing software

- 1 Close all running applications.
- 2 Insert the compact disc into the CD-ROM drive.  
Depending on the computer configuration, the installation program might start automatically. If the installation program does not start automatically, complete the following steps:
  - a Click **Start**, and then click **Run**.
  - b Type **D:\SETUP** (or the appropriate drive-directory letter) in the command-line box and click **OK**.
- 3 Follow the instructions on the computer screen.

---

### Note

If you would like to test the software installation, select the option near the end of the installation program that allows you to print a test page.

---

---

## Step 15. Verify printer setup

The easiest way to verify that the installation has been completed successfully is to print a document from a software application.

- 1 Open a software application of your choice and open or create a simple document.
- 2 Select the Print command in the software application. (Typically, you can select this command by clicking **File**, and then clicking **Print**.) The **Print** dialog box for the software application appears.
- 3 Make sure the correct printer name appears in the **Print** dialog box.
- 4 Print the document.

If the document prints, installation is complete. If nothing prints or if the document does not print correctly, see the problem solving chapter in the online use guide.

**Congratulations, the printer setup is complete!**

---

# Hewlett-Packard Limited Warranty Statement

---

HP product	Duration of Limited Warranty
HP LaserJet 5100 series printer	1 year, return to HP

---

- 1 HP warrants to you, the end-user customer, that HP hardware and accessories will be free from defects in materials and workmanship after the date of purchase, for the period specified above. If HP receives notice of such defects during the warranty period, HP will, at its option, either repair or replace products which prove to be defective. Replacement products may be either new or equivalent in performance to new.
- 2 HP warrants to you that HP software will not fail to execute its programming instructions after the date of purchase, for the period specified above, due to defects in material and workmanship when properly installed and used. If HP receives notice of such defects during the warranty period, HP will replace software which does not execute its programming instructions due to such defects.
- 3 HP does not warrant that the operation of HP products will be uninterrupted or error free. If HP is unable, within a reasonable time, to repair or replace any product to a condition as warranted, you will be entitled to a refund of the purchase price upon prompt return of the product.
- 4 HP products may contain remanufactured parts equivalent to new in performance or may have been subject to incidental use.
- 5 Warranty does not apply to defects resulting from (a) improper or inadequate maintenance or calibration, (b) software, interfacing, parts or supplies not supplied by HP, (c) unauthorized modification or misuse, (d) operation outside of the published environmental specifications for the product, or (e) improper site preparation or maintenance.
- 6 TO THE EXTENT ALLOWED BY LOCAL LAW, THE ABOVE WARRANTIES ARE EXCLUSIVE AND NO OTHER WARRANTY OR CONDITION, WHETHER WRITTEN OR ORAL, IS EXPRESSED OR IMPLIED AND HP SPECIFICALLY DISCLAIMS ANY IMPLIED WARRANTIES OR CONDITIONS OF MERCHANTABILITY, SATISFACTORY QUALITY, AND FITNESS FOR A PARTICULAR PURPOSE. Some countries, states or provinces do not allow limitations on the duration of an implied warranty, so the above limitation or exclusion might not apply to you. This warranty gives you specific legal rights and you might also have other rights that vary from country to country, state to state, or province to province.

- 7 HP's limited warranty is valid in any country or locality where HP has a support presence for this product and where HP has marketed this product. The level of warranty service you receive may vary according to local standards. HP will not alter form, fit or function of the product to make it operate in a country for which it was never intended to function for legal or regulatory reasons.
- 8 **TO THE EXTENT ALLOWED BY LOCAL LAW, THE REMEDIES IN THIS WARRANTY STATEMENT ARE YOUR SOLE AND EXCLUSIVE REMEDIES. EXCEPT AS INDICATED ABOVE, IN NO EVENT WILL HP OR ITS SUPPLIERS BE LIABLE FOR LOSS OF DATA OR FOR DIRECT, SPECIAL, INCIDENTAL, CONSEQUENTIAL (INCLUDING LOST PROFIT OR DATA), OR OTHER DAMAGE, WHETHER BASED IN CONTRACT, TORT, OR OTHERWISE.** Some countries, states or provinces do not allow the exclusion or limitation of incidental or consequential damages, so the above limitation or exclusion may not apply to you.

**THE WARRANTY TERMS CONTAINED IN THIS STATEMENT, EXCEPT TO THE EXTENT LAWFULLY PERMITTED, DO NOT EXCLUDE, RESTRICT OR MODIFY AND ARE IN ADDITION TO THE MANDATORY STATUTORY RIGHTS APPLICABLE TO THE SALE OF THIS PRODUCT TO YOU.**

---

## Limited Warranty for Print Cartridge Life

This HP Print Cartridge is warranted to be free from defects in materials and workmanship for cartridge life (until the HP toner is depleted).

Your HP toner is depleted when you begin to see faded or light type on your printed page or, if applicable, your printer indicates a toner low message. HP will, at HP's option, either replace products which prove to be defective or refund your purchase price.

The warranty does not cover cartridges which have been refilled, are emptied, abused, misused, or tampered with in any way.

This limited warranty gives you specific legal rights. You may have other rights which vary from state to state, province to province and country to country.

To the extent allowed by applicable law, in no event shall Hewlett-Packard Company be liable for any incidental, consequential, special, indirect, punitive, or exemplary damages or lost profits from any breach of this warranty or otherwise.

In the event that your product proves to be defective, please return to place of purchase with a written description of the problem.

---

# Regulatory information

## FCC regulations

This equipment has been tested and found to comply with the limits for a Class B digital device, pursuant to Part 15 of the FCC rules. These limits are designed to provide reasonable protection against harmful interference in a residential installation. This equipment generates, uses, and can radiate radio frequency energy. If this equipment is not installed and used in accordance with the instructions, it may cause harmful interference to radio communications. However, there is no guarantee that interference will not occur in a particular installation. If this equipment does cause harmful interference to radio or television reception, which can be determined by turning the equipment off and on, the user is encouraged to try to correct the interference by one or more of the following measures:

- Reorient or relocate the receiving antenna.
- Increase separation between equipment and receiver.
- Connect equipment to an outlet on a circuit different from that to which the receiver is located.
- Consult your dealer or an experienced radio/TV technician.

---

### Note

Any changes or modifications to the printer that are not expressly approved by HP could void the user's authority to operate this equipment.

Use of a shielded interface cable is required to comply with the Class B limits of Part 15 of FCC rules.

---

# Environmental Product Stewardship Program

## Protecting the environment

Hewlett-Packard Company is committed to providing quality products in an environmentally-sound manner. This product has been designed with several attributes to minimize impacts on our environment.

### Ozone production

The product generates no appreciable ozone gas (O<sub>3</sub>).

### Energy consumption

Energy usage drops significantly while in PowerSave mode, which saves natural resources, and saves money without affecting the high performance of this product. **This product qualifies for ENERGY STAR®, which is a voluntary program established to encourage the development of energy-efficient office products.**



ENERGY STAR is a U.S. registered service mark of the U.S. Environmental Protection Agency. As an ENERGY STAR® partner, Hewlett-Packard Company has determined that this product meets ENERGY STAR® Guidelines for energy efficiency. For more information, see <http://www.energystar.gov>.

### Paper use

The duplex printing accessory and N-up printing capability (multiple pages printed on one sheet) can reduce paper usage and the resulting demands on natural resources. For more information about these features, see the online use guide.

### Plastics

Plastic parts over 25 grams are marked according to international standards that enhance the ability to identify plastics for recycling purposes at the end of the product's life.

## HP LaserJet printing supplies

In many countries, this product's printing supplies (for example, print cartridge) can be returned to HP through the HP Printing Supplies Returns and Recycling Program. An easy-to-use and free takeback program is available in over 48 countries. Multi-lingual program information and instructions are included in every new HP LaserJet print cartridge and supplies package.

## HP Printing Supplies Returns and Recycling Program Information

Since 1990, the HP Printing Supplies Returns and Recycling Program has collected more than 47 million used HP LaserJet print cartridges that otherwise may have been discarded in the world's landfills. The HP LaserJet print cartridges and supplies are collected and bulk shipped to our resource and recovery partners who disassemble the cartridge. After a thorough quality inspection, selected parts are reclaimed for use in new cartridges. Remaining materials are separated and converted into raw materials for use by other industries to make a variety of useful products.

### U.S. returns

For a more environmentally responsible return of used cartridges and supplies, HP encourages the use of bulk returns. Simply bundle two or more cartridges together and use the single, pre-paid, pre-addressed UPS label that is supplied in the package. For more information in the U.S., call (1) (800) 340-2445 or visit the HP Printing Supplies Returns and Recycling Program website at: <http://www.hp.com/go/recycle>.

### Non-U.S. returns

Non-U.S. customers should call the local HP Sales and Service Office or visit the <http://www.hp.com/go/recycle> website for further information regarding availability of the HP Printing Supplies Returns and Recycling Program.

## Paper

This product is capable of using recycled papers, when the paper meets the guidelines outlined in the HP LaserJet Printer Family Print Media Guide. See the online use guide for ordering information. This product is suitable for the use of recycled paper according to DIN 19309.



## Material restrictions

This product does not contain added mercury.

This product does not contain batteries.

This HP product contains lead in solder.

For recycling information, you can contact <http://www.hp.com/go/recycle> or contact your local authorities or the Electronics Industry Alliance: <http://www.eiae.org>.

## Material safety data sheet

Material Safety Data Sheets (MSDS) can be obtained from the HP LaserJet Supplies website at <http://www.hp.com/go/msds>.

## Extended warranty

HP SupportPack provides coverage for the HP hardware product and all HP supplied internal components. The hardware maintenance covers a three-year period from the date of the HP product purchase. The customer must purchase HP SupportPack within 180 days of the HP product purchase. For more information, contact HP Customer Care. See the support flyer that shipped in the box with the printer.

## Spare parts and supplies availability

Spare parts and consumable supplies for this product will be available for at least five years after production has stopped.

## For more information

On HP's environmental programs, including:

- Product environmental profile sheet for this and many related HP products
- HP's commitment to the environment
- HP's environmental management system
- HP's end-of-life product return and recycling program
- Material Safety Data Sheets

See: <http://www.hp.com/go/environment> or <http://www.hp.com/hpinfo/community/environment>

# Declaration of Conformity

according to ISO/IEC Guide 22 and EN 45014

---

**Manufacturer's Name:** Hewlett-Packard Company  
**Manufacturer's Address:** 11311 Chinden Boulevard  
Boise, Idaho 83714-1021, USA

**Declares that the product**

**Product Name:** HP LaserJet 5100Le  
**Model Number (s):** Q1863A  
**Product Accessory:** All

**Conforms to the following Product Specifications:**

**Safety:** IEC 60950:1991+A1 + A2 + A3 + A4 / EN 60950: +A1 + A2 + A3 + A4 + A11  
IEC 60825-1:1993 + A1 / EN 60825-1 + A11 Class 1 Laser/LED Product

**EMC:** CISPR 22:1993 + A1 + A2 / EN 55022:1994 + A1 + A2 Class B<sup>\*</sup>  
EN 61000-3-2:1995 / A14  
EN 61000-3-3:1995  
EN 55024:1998

FCC Title 47 CFR, Part 15 Class B2 / ICES-003, Issue 3  
AS / NZS 3548:1995 + A1 + A2

## Supplementary Information:

The product herewith complies with the requirements of the EMC Directive 89/336/EEC and the Low Voltage Directive 73/23/EEC, and carries the CE-Marking accordingly.

1. The product was tested in a typical configuration with Hewlett-Packard Personal Computer Systems.
2. This Device complies with Part 15 of the FCC Rules. Operation is subject to the following two Conditions:  
(1) this device may not cause harmful interference, and (2) this device must accept any interference received, including interference that may cause undesired operation.

\*The product includes LAN (Local Area Network) options. When the interface cable is attached to LAN connectors, the product meets the requirements of EN55022 Class A in which case the following applies:  
Warning: This is a class A product. In a domestic environment this product may cause radio interference in which case the user may be required to take adequate measures.

3. The model number may include an additional suffix letter "R".

**Boise, Idaho USA  
20 December 2001**

---

**Australia Contact:** Product Regulations Manager, Hewlett-Packard Australia Ltd., 31-41 Joseph Street, Blackburn, Victoria 3130, Australia

**European Contact:** Your Local Hewlett-Packard Sales and Service Office or Hewlett-Packard GmbH, Department HQ-TRE / Standards Europe, Herrenberger Straße 130, D-71034 Böblingen  
(FAX: +49-7031-14-3143)

**USA Contact:** Product Regulations Manager, Hewlett-Packard Company, PO Box 15, Mail Stop 160, Boise, Idaho 83707-0015 (Phone: 208-396-6000)

## Electrical specifications

### WARNING!

Power requirements are based on the region where the printer is sold. Do not convert operating voltages. This may damage the printer and void the product warranty.

	110-Volt Models	220-Volt Models
<b>Power Requirements</b>	100-127V (+/-10%) 50/60 Hz (+/- 2 Hz)	220-240V (+/-10%) 50/60 Hz (+/- 2 Hz)
<b>Minimum Recommended circuit capacity for typical product</b>	7.5 Amps	3.5 Amps
<b>Average Power Consumption (Watts) -</b>	<ul style="list-style-type: none"><li>• Printing (22 PPM): 467 W</li><li>• Standby: 33 W</li></ul>	<ul style="list-style-type: none"><li>• Printing (22 PPM): 465 W</li><li>• Standby: 30 W</li></ul>
<b>LaserJet 5100</b>	<ul style="list-style-type: none"><li>• PowerSave: 20 W</li><li>• Off: 0 W</li></ul>	<ul style="list-style-type: none"><li>• PowerSave: 23 W</li><li>• Off: 0 W</li></ul>

Values subject to change, see <http://www.hp.com/support/lj5100> for current information.

PowerSave default activation time is 30 minutes.

## Acoustic emissions

Values subject to change, see <http://www.hp.com/support/lj5100> for current information.

### Sound power level

Declared Per ISO 9296

Printing (22 PPM)	$L_{WAd} = 6.8$ Bels (A) [68 dB (A)]
PowerSave	$L_{WAd} = 4.4$ Bels (A) [44 dB (A)]

### SPL-bystander position

Declared Per ISO 9296

Printing (22 PPM)	$L_{pAm} = 53$ dB (A)
PowerSave	$L_{pAm} = 32$ dB (A)

# Safety statements

## Laser Safety Statement

The Center for Devices and Radiological Health (CDRH) of the U.S. Food and Drug Administration has implemented regulations for laser products manufactured since August 1, 1976. Compliance is mandatory for products marketed in the United States. The printer is certified as a “Class 1” laser product under the U.S. Department of Health and Human Services (DHHS) Radiation Performance Standard according to the Radiation Control for Health and Safety Act of 1968. Since radiation emitted inside the printer is completely confined within protective housings and external covers, the laser beam cannot escape during any phase of normal user operation.

---

### WARNING!

---

Using controls, making adjustments, or performing procedures other than those specified in this user’s guide may result in exposure to hazardous radiation.

## EMI Statement (Korea)

사용자 안내문 (B급 기기)

이 기기는 비업무용으로 전자파장해 검정을 받은 기기로서, 주거 지역에서는 물론 모든 지역에서 사용할 수 있습니다.



---

# hp LaserJet 5100Le 打印机

---

## 入门指南

© 版权所有 Hewlett-Packard  
Company 2002

一切权利保留。除非版权法许可，否则，在事先未经书面许可的情况下，严禁复制、改编或翻译本书。

出版号  
Q1863-90901

2002 年 5 月第一版

### 保修

本书所含信息如有更改，恕不另行通知。

惠普公司不对与本信息有关的任何事宜提供担保。

在以下国家/地区提供对本产品的保修：中国、韩国和台湾。

惠普公司未对任何特殊用途的适用性和适用性做出暗示担保。

对于由本信息的提供或使用所引起的任何直接、间接、偶然、继发性或其它损失，惠普公司概不负责。

### 商标说明

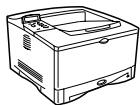
ENERGY STAR 和 Energy Star 徽标是美国环保署在美国的注册标记。

Microsoft 和 Windows 是微软公司在美国的注册商标。



---

## 简介



恭喜您购买了 HP LaserJet 5100Le 打印机！本打印机（产品号：Q1863A）是一台每分钟可打印 22 页（ppm）的激光打印机，随附的标准配件有 100 页多用途纸盘 1、250 页纸盘 2 和 16 MB 内存。该打印机能够在最大尺寸为 A3 和 11 × 17 英寸（279 × 432 毫米）的纸张上打印全出血图像。

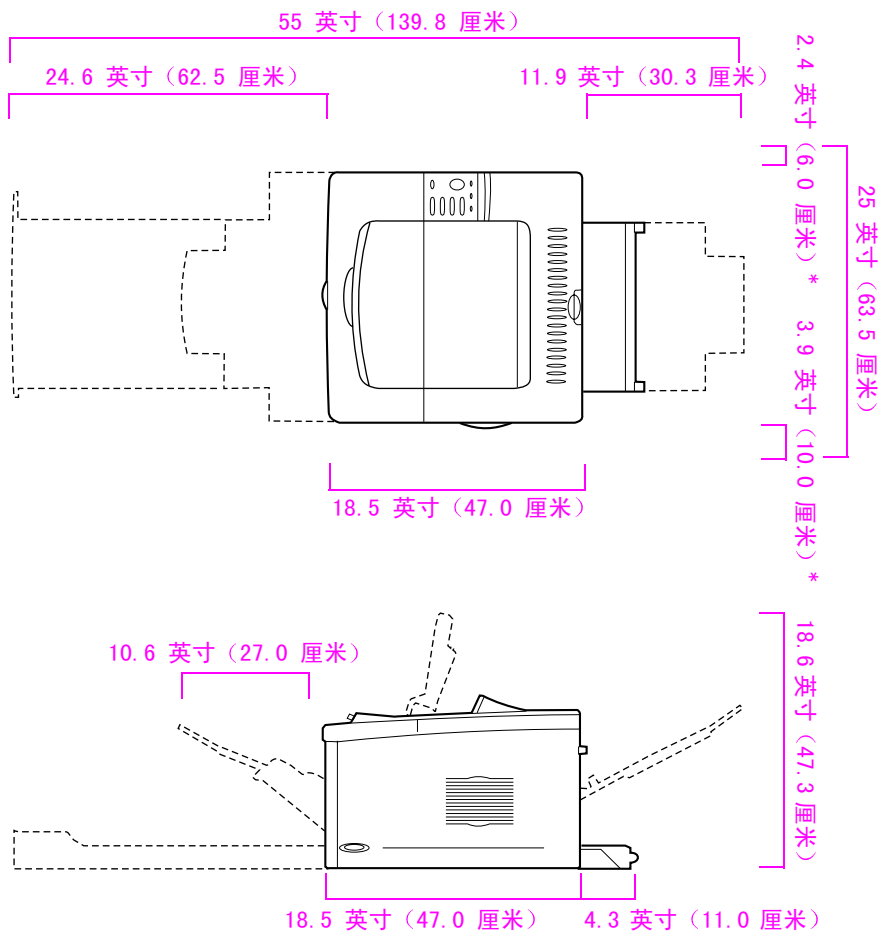
## 安装检查清单

本指南将帮助您设置和安装新打印机。要进行正确安装，请按顺序完成以下每个部分。

打开打印机包装	步骤 1-4
安装和连接打印机	步骤 5-13
安装打印软件	步骤 14
验证打印机安装	步骤 15

## 步骤 1. 准备打印机的安装位置

### 打印机尺寸



\* 通风空间。

图 1 HP LaserJet 5100Le 打印机尺寸（顶视图和侧视图）

### 打印机重量（不包括打印碳粉盒）

HP LaserJet 5100Le 打印机：50 磅（23 千克）

## 打印机安装位置要求

---

- 放置在稳固、平坦的表面上
- 足够的电源供应（对于 100-127 V 机型，至少 10.5 A；对于 220-240 V 机型，至少 5.3 A）
- 在打印机四周留出通风空间：  
左侧 2.4 英寸（60 毫米），  
右侧 3.9 英寸（100 毫米）
- 环境稳定 — 温度或湿度无突变
- 清洁、通风良好的环境
- 相对湿度介于 20% 至 80% 之间
- 不直接暴露在日光下或化学物品附近，包括氨基清洁剂
- 室温介于 50° 至 91°F（15° 至 32.5°C）之间

## 步骤 2. 检查包装箱内的物品

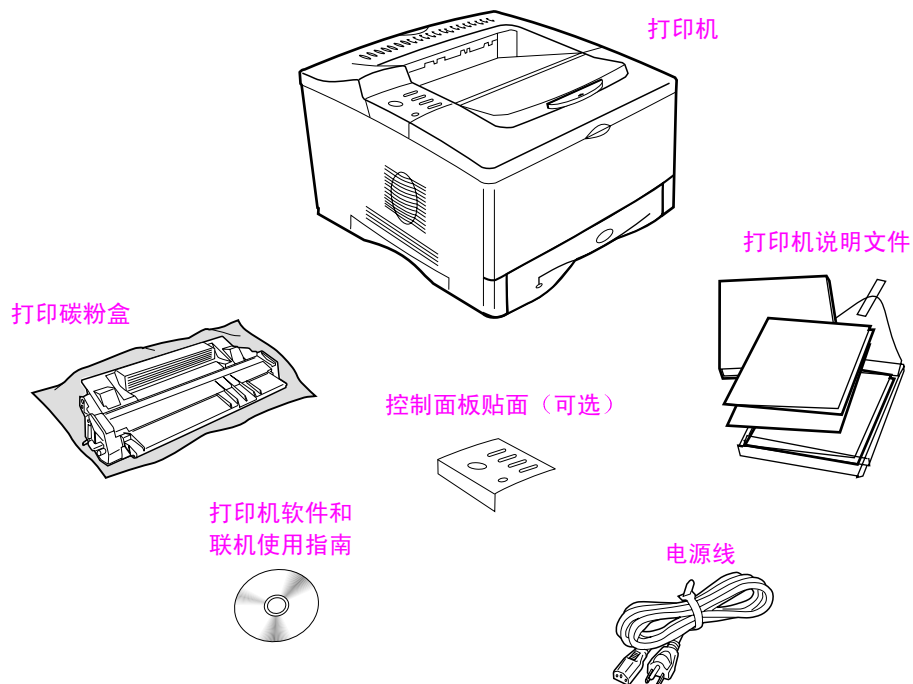
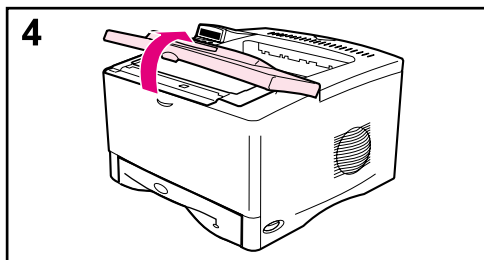
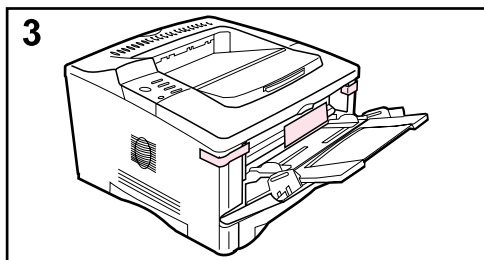
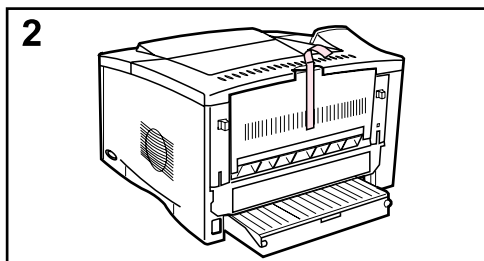
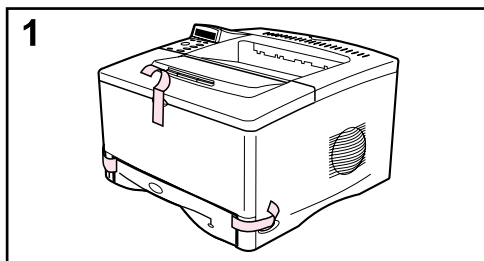


图 2 包装箱内的物品

### 注释

包装箱中并未附带打印机电缆。有关订购信息，请参阅联机使用指南的第 1 章。（联机使用指南位于随打印机附带的光盘上。）

## 步骤 3. 除去内层包装



### 注释

请保存好所有包装材料，您以后有可能需要重新包装打印机。

- 1 撕下打印机前面的胶布。
- 2 撕下打印机背面的胶布。
- 3 打开纸盘 1，取出纸隔板并撕下胶布。
- 4 打开顶盖并取出内部包装材料。

## 步骤 4. 打印机部件定位

下图显示了打印机重要部件的位置和名称。

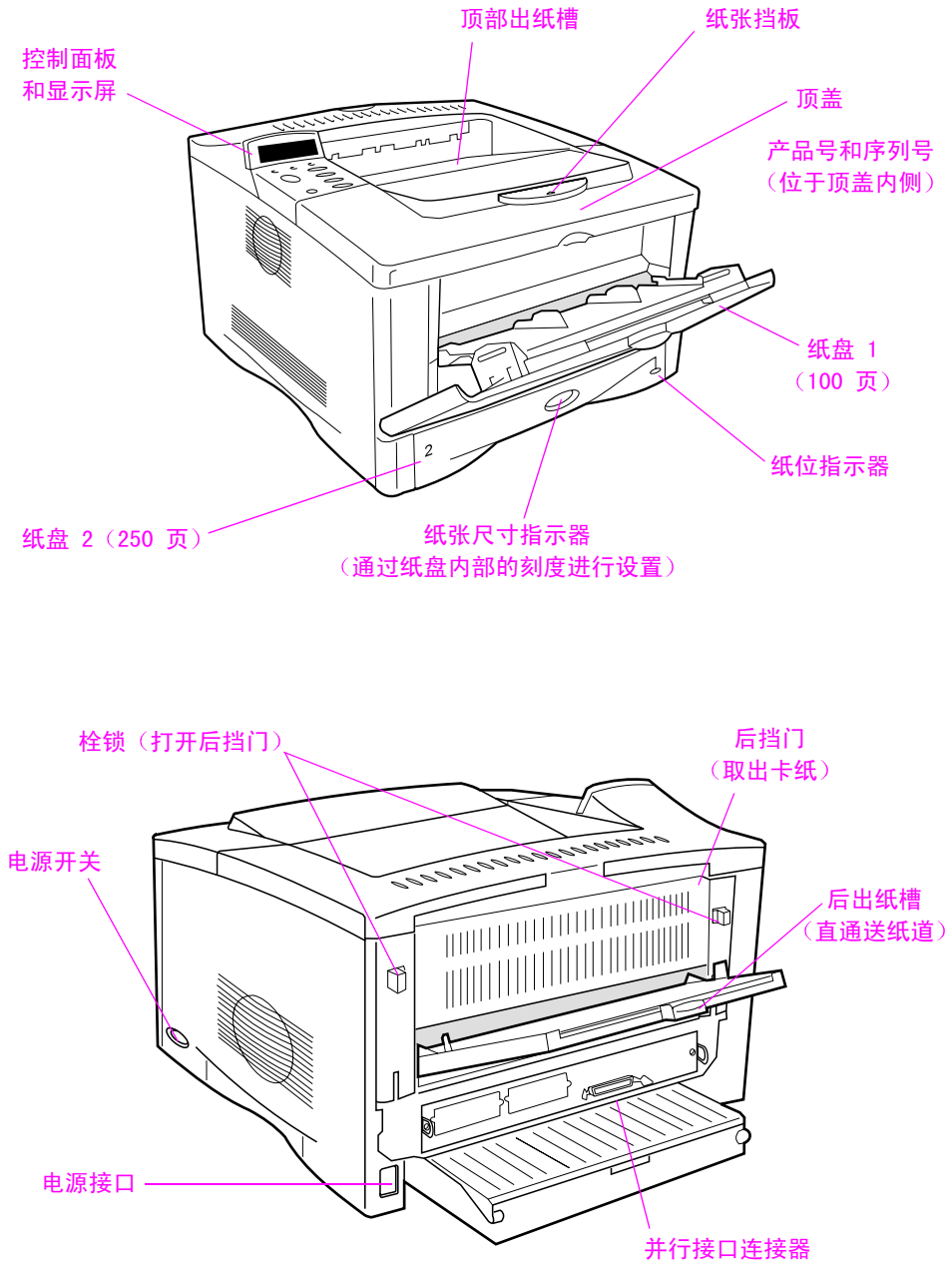


图 3 打印机部件 (前视图和后视图)

## 步骤 5. 安装附件

安装随打印机购买的所有附件。有关安装内存、字体或闪存 DIMM 附件的信息，请参阅联机使用指南。

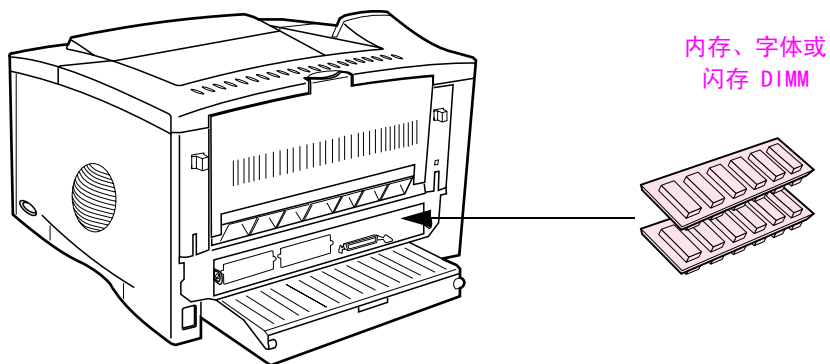
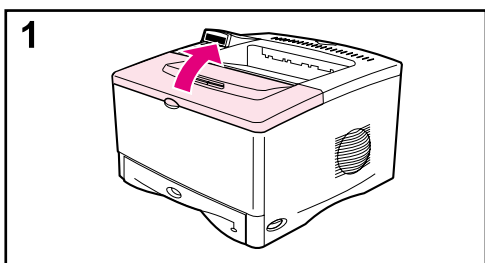


图 4 可选附件

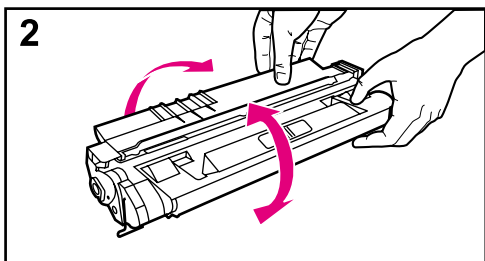
## 步骤 6. 安装打印碳粉盒



- 1 打开打印机的顶盖。从包装中取出打印碳粉盒（保留包装以备将来存放碳粉盒）。

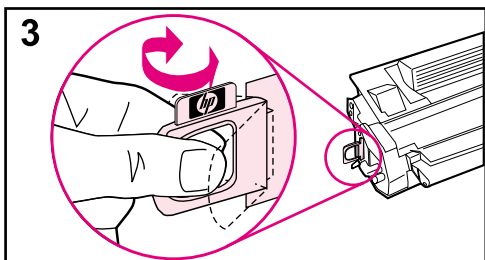
### 小心

为防止损坏打印碳粉盒，请勿将其暴露在日光下超过数分钟。

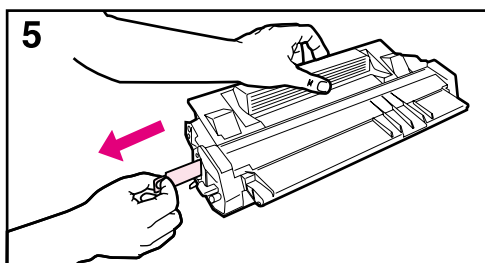


- 2 旋转碳粉盒并轻轻地左右摇晃，使碳粉在盒内均匀分布。
- 3 在碳粉盒末端找到密封胶带环，小心地将其来回弯曲，直到脱离碳粉盒。

继续下一页的步骤。







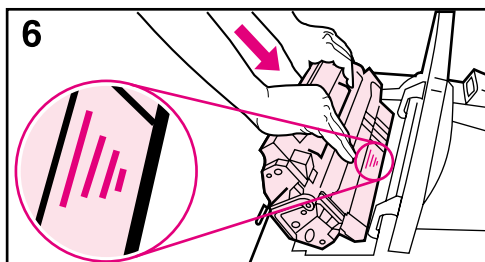
- 4 用力将该拉环拉离碳粉盒，以撕下整条密封胶带。避免接触胶带上的黑色碳粉。

---

**注释**

如果拉环从胶带上脱落，则抓紧胶带，将其从碳粉盒中拉出。

---



---

**注释**

如果碳粉沾在衣服上，请用干布将它抹去，然后用冷水洗涤衣服。（热水会使碳粉渗入纤维。）

---

- 5 如图所示放入碳粉盒，箭头指向打印机。将碳粉盒滑入打印机，直到滑到头为止，合上顶盖。

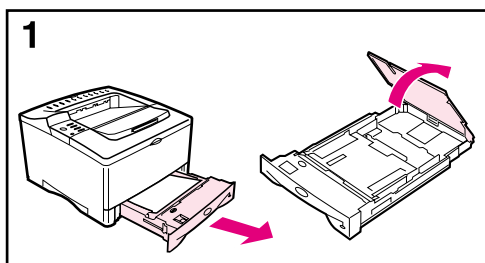
---

**注释**

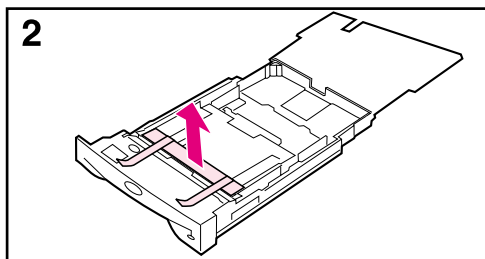
如果打印碳粉盒不能轻松滑进打印机，则检查并确保所有包装材料都已取下。同时，也确保打印机内部的卡纸检查口盖板（用绿色手柄标出）在向下位置。

---

## 步骤 7. 将纸张装入纸盘 2



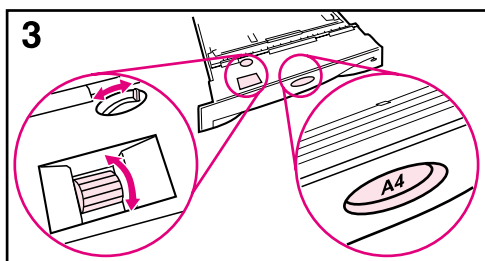
- 1 将纸盘 2 从打印机拉出，提起纸盘盖。
- 2 取出包装纸板并撕下胶带。
- 3 将纸盘中的刻度盘设为所需的设置，以便打印机读出正确的纸张尺寸。使用转换开关访问更多尺寸。



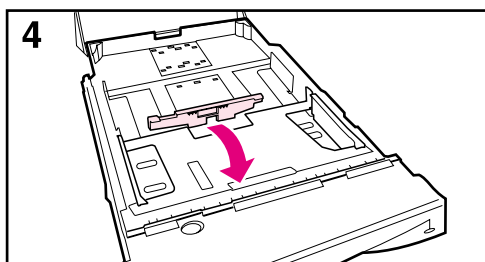
### 注释

纸盘刻度盘所示的纸张尺寸必须与纸盘中所装的纸张尺寸相匹配。如果这些尺寸不匹配，则纸张可能卡塞或产生其它错误。

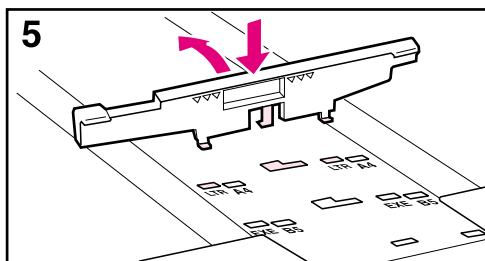
设置刻度盘会调整打印机的传感器，但不会调整纸盘内的导板。

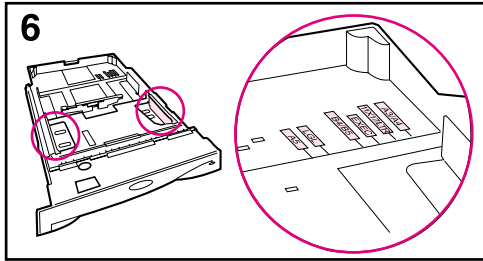


- 4 要重新放置后部的蓝色导板，请将导板向纸盘前部倾斜，然后取下该导板。
- 5 将后导板与所需纸张尺寸对齐。将导板稍稍倾向纸盘前端，然后将其插入合适的孔中。将后导板旋向上，直至其卡入到位。

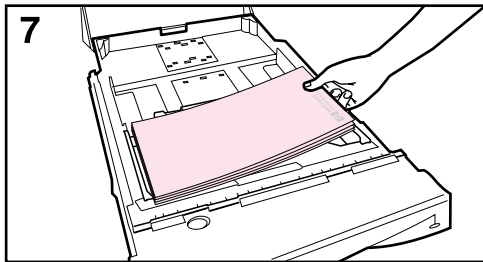


继续下一页的步骤。

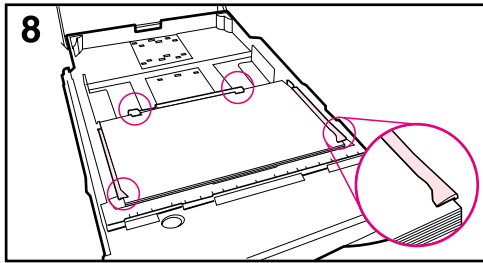




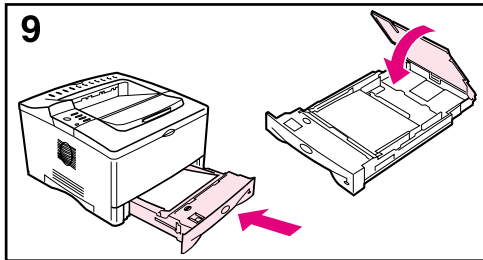
6 将蓝色的侧导板滑到需要的纸张尺寸处。



7 在纸盘中装入纸张。



8 确保纸张在纸盘中四角平展，并且处在导板的卡舌下。



9 合上纸盘盖，然后将纸盘滑入打印机。

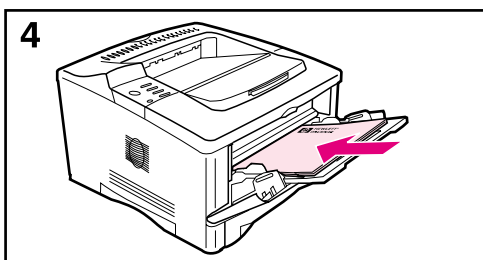
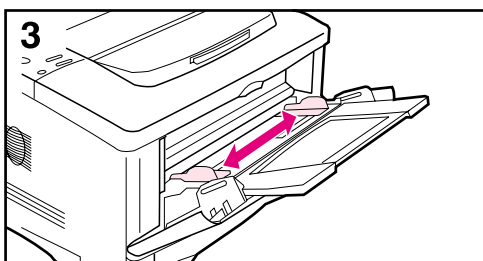
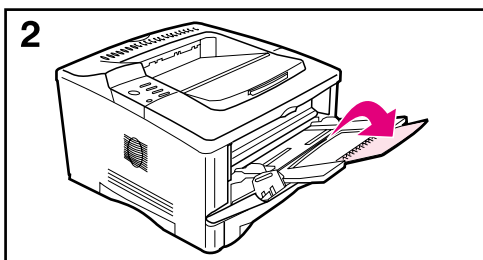
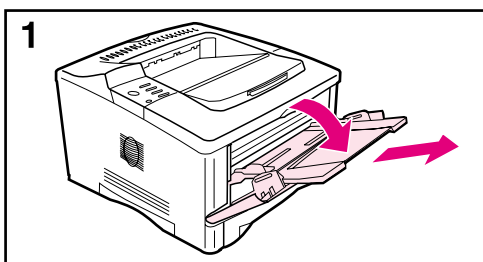
---

**注释**

有关装入和打印自定义尺寸纸张的说明，请参阅联机使用指南。

---

## 步骤 8. 将纸张装入纸盘 1 (可选)



纸盘 1 是多用途纸盘，最多可以装入 100 张纸、约 10 个信封或 20 张索引卡片。

### 注释

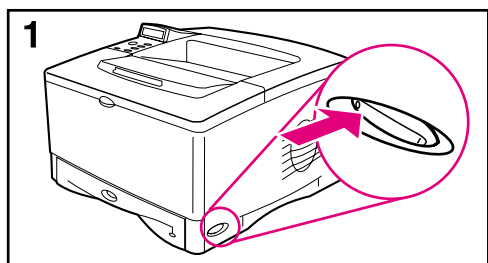
打印机将首先打印纸盘 1 中的纸张，除非您从打印机控制面板更改了纸盘 1 设置。要更改打印时纸盘的使用顺序，请参阅联机使用指南。

- 1 从挡门顶部中央向下拉，打开纸盘 1。拉出纸盘延伸架，直至其卡入到位。
- 2 如果纸张长于 9 英寸 (229 毫米)，则翻开第二块纸盘延伸架。
- 3 将导板调整到需要的纸张尺寸处。
- 4 装入纸张。纸张应卡在导板的卡舌下。
  - 装入 letter 或 A4 纸张时，长边朝向打印机。
  - 装入 legal、11 × 17 或 A3 纸张时，短边朝向打印机。

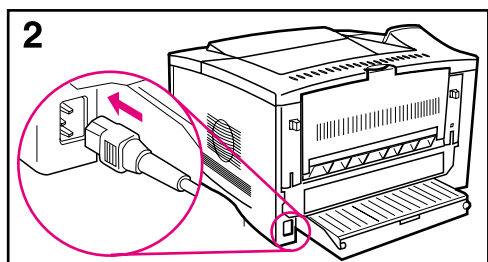
### 注释

有关特定作业的正确方向，请参阅联机使用指南中的信头纸、信封和双面打印部分。

## 步骤 9. 连接电源线

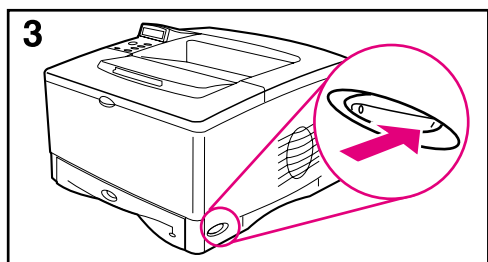


- 1 找到位于打印机右侧的电源开关。确保打印机已关闭。
- 2 用电源线将打印机连接至接地的电源插座或交流电插座。

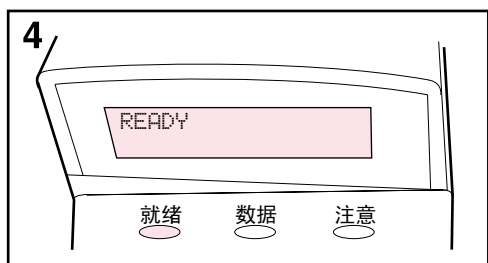


### 小心

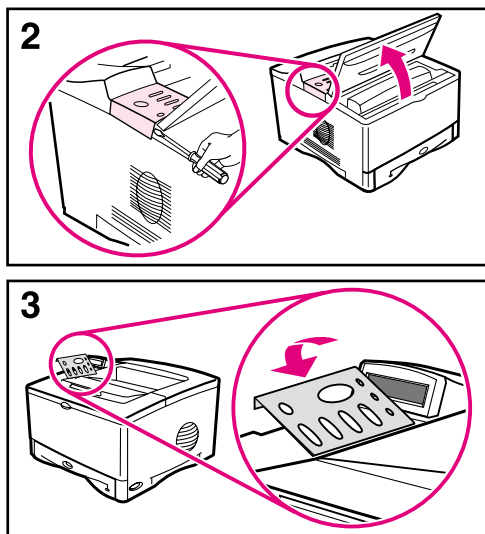
为防止损坏打印机，请仅使用随打印机提供的电源线。



- 3 打开打印机电源。
- 4 打印机预热之后，控制面板显示屏上应显示 READY（就绪）信息，并且就绪指示灯应持续亮起。如果未显示 READY（就绪）信息，则请参阅联机使用指南中的问题解决章节。



## 步骤 10. 更改控制面板贴面（可选）



如有必要，请按以下步骤安装适用于您的语言的相应控制面板贴面。

- 1 找到打印机出纸槽中的控制面板贴面。（这些贴面在装运过程中可能已发生移动。）
- 2 如有必要，请撕下打印机当前安装的贴面。
  - a 打开打印机的顶盖。
  - b 将一个薄硬物件插入贴面边缘下，然后向上拉贴面，直至其脱离。
  - c 关闭顶盖。
- 3 将所需的控制面板贴面放在控制面板上，然后卡入到位。

---

## 步骤 11. 配置控制面板显示语言（可选）

默认设置下，打印机控制面板会以英文显示信息。如有必要，请将打印机设置为以另外一种支持的语言显示信息和打印配置页。

- 1 关闭打印机电源。
- 2 打开打印机电源时，按住 [ 选择 ] 键。
- 3 当 LED 显示屏中显示 SELECT LANGUAGE（选择语言）时，松开 [ 选择 ] 键。
- 4 打印机完成初始化后，LANGUAGE = ENGLISH（语言 = 英语）将显示在 LED 显示屏上。
- 5 当 LANGUAGE = ENGLISH 显示在显示屏上时，按下 [- 数值 +] 键，滚动查看可用的语言。
- 6 按下 [ 选择 ] 键，将所需的语言保存为新的默认设置。
- 7 按下 [ 执行 ] 键，返回 READY（就绪）状态。
- 8 要使新选定的语言生效，请关闭打印机电源然后再打开。
- 9 LED 显示屏现在应以所选语言显示文字。

## 步骤 12. 连接打印机电缆

HP LaserJet 5100Le 打印机有一个接口：IEEE-1284 并行端口。

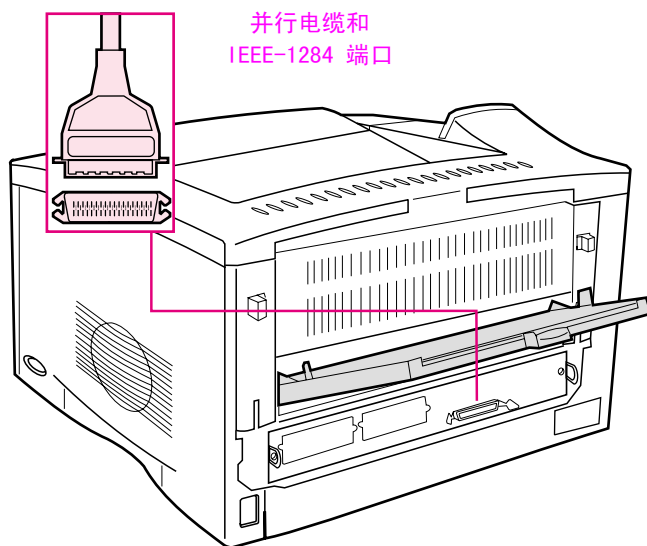
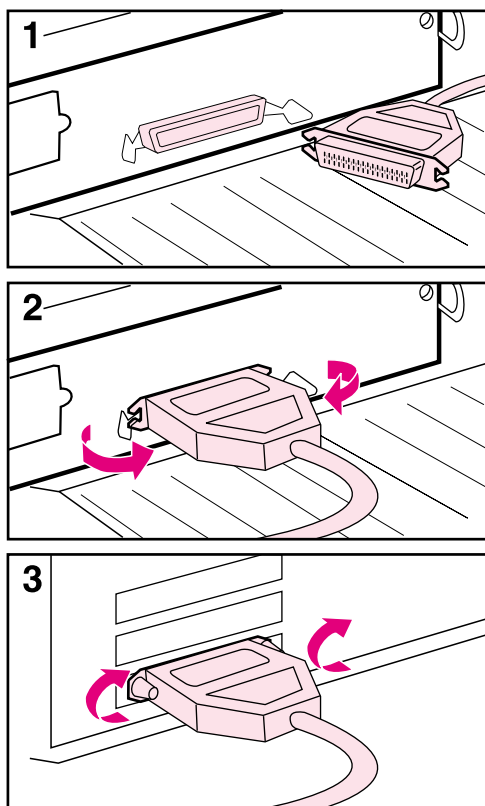


图 5 接口端口



## 连接并行电缆



要确保可靠性，请使用 IEEE-1284 双向并行电缆。（这些电缆清楚地标有“IEEE-1284”。）仅有 IEEE-1284 电缆才支持打印机的所有高级功能。

### 小心

确保打印机已关闭。

- 1 将并行电缆连接到并行端口。
- 2 将线夹卡入到位，以使电缆固定在打印机上。

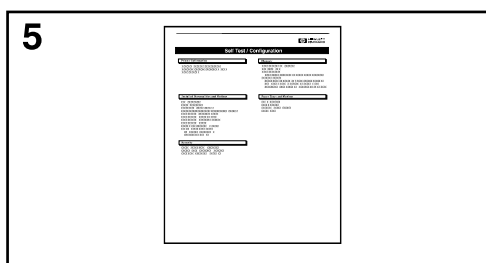
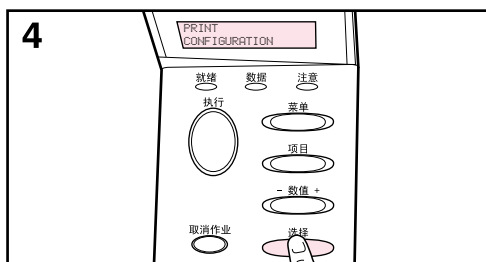
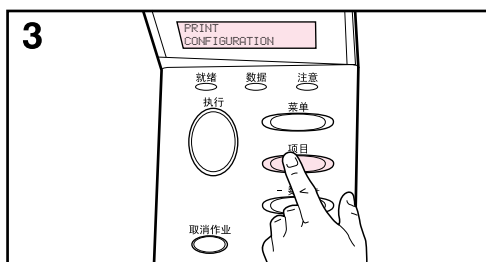
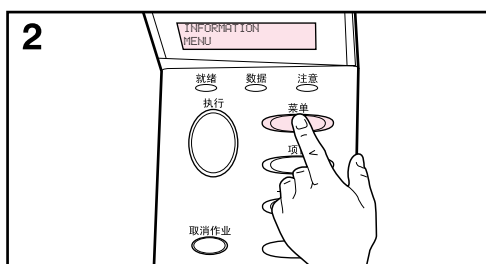
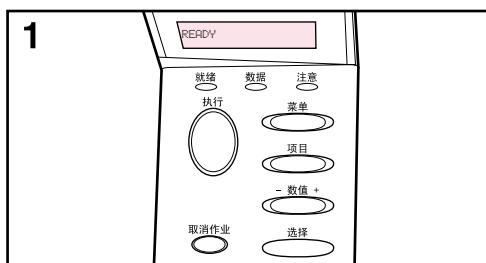
电缆应该很容易安装。如果难以安装，请检查电缆的方向是否正确。

- 3 将电缆另一端连接至计算机上的正确接口。

### 注释

有关订购两米或三米 IEEE-1284 并行电缆的信息，请参阅联机使用指南。

## 步骤 13. 测试打印机



打印配置页以确保打印机操作正常。

- 1 确保打印机已开机并显示 READY（就绪）信息。
- 2 按下 **[菜单]** 键，直到屏幕显示 INFORMATION MENU（信息菜单）。
- 3 按下 **[项目]** 键，直到屏幕显示 PRINT CONFIGURATION（打印配置）。
- 4 按下 **[选择]** 键，打印配置页。
- 5 配置页显示打印机的当前配置。

---

## 步骤 14. 安装打印软件

打印机附带的光盘中提供了打印软件。您必须安装此光盘上的打印机驱动程序，以便充分利用打印机功能。此外，此光盘上还有打印机联机使用指南。

如果您的计算机未配备 CD-ROM 驱动器，但您可以访问某个 CD-ROM 驱动器，则可以将光盘中的软件复制到软盘上，以便在计算机中安装。

您可从 Internet 的以下网址获得最新打印机驱动程序：

<http://www.hp.com/support/lj5100>。视运行 Microsoft® Windows® 的计算机的配置而定，打印机软件的安装程序会自动检查计算机是否可以访问 Internet，以便获得最新软件。

### 安装 Windows 打印软件

- 1 关闭正在运行的所有应用程序。
- 2 将光盘插入 CD-ROM 驱动器。  
视计算机配置而定，安装程序可能会自动运行。如果安装程序未自动运行，请按以下步骤操作：
  - a 单击**开始**，然后单击**运行**。
  - b 在命令行框中键入 `D:\SETUP`（或者恰当的驱动器目录名），然后单击**确定**。
- 3 按照计算机屏幕上的说明进行操作。

---

#### 注释

如果想测试软件安装是否成功，请在安装程序快要结束时选择打印测试页。

---

## 步骤 15. 验证打印机安装

验证安装是否顺利完成的最简便方法是通过一个软件应用程序打印一份文档。

- 1 打开您选择的软件应用程序，然后打开或创建一个简单的文档。
- 2 在软件应用程序中选择打印命令。（通常，您可以通过依次单击**文件**和**打印**来选择此命令。）软件应用程序的**打印**对话框会显示。
- 3 确保打印对话框中显示的打印机名称正确无误。
- 4 打印文档。

如果文档打印出来，则表示安装已完成。如果未打印任何内容或文档打印不正确，请参阅联机使用指南中的问题解决章节。

**恭喜您已完成了打印机安装！**

# 惠普有限保修声明

---

## HP 产品

## 有限保修期

---

HP LaserJet 5100 系列打印机

1 年, 退回 HP

---

- 1 HP 向最终用户担保 HP 硬件和附件自购买之日起, 在上述指定保修期内不存在材料和工艺上的缺陷。如果 HP 在保修期内获悉此类缺陷, 则 HP 将选择修理或更换证实有缺陷的产品。更换产品可能是新产品, 或是与新产品具有同等性能的产品。
- 2 HP 担保自购买之日起, 正确安装和使用的 HP 软件在上述指定的保修期内不会由于材料和工艺上的缺陷而不能执行其程序设计指令。如果 HP 获悉软件在保修期内存在此类缺陷, 则 HP 将更换由于此类缺陷而不能执行其程序设计指令的软件。
- 3 HP 不担保 HP 产品的操作不会中断或不会出现错误。如果 HP 无法在合理的时间内按保修所述条件修理或更换产品, 则您在迅速返还产品后有权要求收回该产品的购买款。
- 4 HP 产品可能含有在性能上等同于新部件的再造部件, 或可能被偶尔使用过的部件。
- 5 保修不适用于由于以下原因而造成的缺陷: (a) 维护或校准不当或不够; (b) 使用非 HP 提供的软件、接口技术、部件或耗材; (c) 擅自修改或错误使用; (d) 在公布的产品环境规格外操作; (e) 场地准备或维护不当。
- 6 在地区法律允许的范围内, 上述保证是专有保证, 此外并无其它暗示或明示的文字或口头的担保或条件, HP 特此否认有适销性、满意的质量以及特定用途适用性的暗示保证或条件。有些国家/地区不允许对暗示保修期有限制, 因此以上限制或例外情况可能不适用于您。本保修声明赋予您特定的法律权利, 因所处的国家/地区不同, 您可能还享有其它权利。
- 7 在 HP 已为本产品提供支持或者 HP 已销售本产品的任何国家/地区, HP 的有限保修均有效。根据各地标准的不同, 您收到的保修服务级别可能会有所不同。HP 不会更改产品的形式、配置和功能, 使产品用于由于法律或条例方面的原因而根本不应使用的国家/地区。

- 8 在地区法律允许的范围内，此保修声明中的补偿是唯一的专有补偿。除了上述补偿之外，HP 或其供应商在任何情况下都不对任何数据丢失或直接、特殊、随发性、意外性（包括利益性损失或数据丢失）或其它损失负责，不管它是依据合约、侵权还是其它原因。有些国家 / 地区不允许对随发性或意外性损失有例外或限制，因此以上限制或例外情况可能不适用于您。

除法律允许的范围外，本声明中的保修条款不包括，也不排除、限制或修改此产品销售给此类客户时适用的强制性法定权利。

---

## 打印碳粉盒使用寿命的有限担保

HP 打印碳粉盒在其使用寿命期限内（直至 HP 碳粉用完）保证不会有材料和工艺方面的缺陷。

在您看到打印页面的颜色开始变浅淡或者打印机显示碳粉不足信息（如果适用）时，即表明 HP 碳粉将耗尽。HP 将自行选择是更换经证实确有缺陷的产品还是退还购买款。

此保修不适用于重新灌装、空置、滥用、误用或以其它方式损坏的碳粉盒。

本有限保修赋予您特定的法律权利。根据各国家/地区、州或省份之间的不同，您可能还会拥有其它权利。

在适用法律允许的范围内，在任何情况下，对于任何违背本保修声明或其它方式造成的偶然、继发性、特殊、间接、惩罚性、或惩戒性损坏或利润损失，惠普公司概不负责。

如果您的产品经检查确实存在缺陷，请将其退回购买地点并附上书面问题说明。

---

## 管制信息

### FCC 规则

此设备经测试符合 FCC 规则第 15 部分的 B 级数字设备限制规定。在住宅区安装时，这些限制为防止有害干扰提供了合理保护。此设备可产生、使用并会发射无线射频能量。如果未按说明进行安装和使用，可能会对无线电通信造成有害干扰。同时，也不能保证在特定安装中不会产生干扰的问题。如果此设备确实对收音机或电视机接收造成干扰（可通过打开和关闭设备来确认），建议您采用以下一种或多种措施排除干扰：

- 重新调整接收天线的方向或位置。
- 加大设备和无线电接收设备之间的距离。
- 将设备连接到与接收设备使用不同电路的电源插座上。
- 与代理商或经验丰富的收音机 / 电视机技术人员联系。

---

#### 注释

未经 HP 同意而对打印机进行更改或修改会使用户无法操作此设备。

必须使用屏蔽接口电缆以符合 FCC 规则第 15 部分的 B 级限制。

---



# 环境产品管理程序

## 保护环境

惠普公司承诺提供符合环保的高质量产品。按照设计，本产品的一些属性可最大限度地降低对环境的影响。

### 臭氧产物

本产品不会产生可测到的臭氧气体 (O<sub>3</sub>)。

### 能源消耗

在 PowerSave (省电模式) 下可大大降低能耗，从而在不影响本产品高性能的前提下节约自然资源和资金。本产品符合 ENERGY STAR<sup>®</sup> 准则，Energy Star 是一个自愿活动，旨在鼓励开发节能高效的办公产品。



ENERGY STAR 是美国环保署在美国的注册服务标记。作为 ENERGY STAR<sup>®</sup> 的合作伙伴，惠普公司已确定本产品符合 ENERGY STAR<sup>®</sup> 的节能标准。有关更多信息，请访问

<http://www.energystar.gov>。

### 纸张使用

双面打印附件和数页打印功能 (在一张纸上打印多页) 可减少纸张消耗以及由此产生的对自然资源的需求。有关这些功能的更多信息，请参阅联机使用指南。

### 塑料

超过 25 克的塑料部件均按国际标准标有标记，有助于在本产品使用期满时识别塑料部件，从而达到回收利用的目的。

## HP LaserJet 打印耗材

在许多国家/地区，本产品的打印耗材（例如，打印碳粉盒）都可通过 HP 打印耗材退回和回收利用计划退回 HP。一项方便使用和免费送还的计划正在 48 个以上的国家/地区中实施。在每个新 HP LaserJet 打印碳粉盒和耗材包装内，均包括以多种语言印制的计划信息和说明。

### HP 打印耗材的退回和回收利用计划信息

从 1990 年开始，HP 打印耗材的退回和回收利用计划已回收了 4700 多万个旧 HP LaserJet 打印碳粉盒，如果不回收，这些打印碳粉盒可能已被弃为垃圾。HP LaserJet 打印碳粉盒和耗材在收集后被大批运到 HP 的资源回收伙伴处，他们将拆分碳粉盒。经过彻底地质量检查后，挑选的部件可回收利用到新碳粉盒中。剩余的材料被分离并且转化为其它工业生产中各种有用产品的原材料。

#### 美国退回

为了对环境负责，HP 鼓励大量回收旧碳粉盒和耗材。您只需将两个或多个碳粉盒捆扎在一起，并使用随包装附带的邮资已付、预先写上地址的 UPS 标签寄出即可。有关在美国退回的更多信息，请致电 (1) (800) 340-2445 或者访问 HP 打印耗材的退回和回收利用计划网站，网址为：<http://www.hp.com/go/recycle>。

#### 美国以外地区的退回

美国以外的客户请致电当地的 HP 销售和服务办事处，或者访问 <http://www.hp.com/go/recycle> 网站，以了解有关 HP 打印耗材的退回和回收利用计划的详细信息。

## 纸张

本产品可以使用再生纸，前提是纸张符合 HP LaserJet Printer Family Print Media Guide (HP LaserJet 系列打印机打印介质指南) 中列出的标准。有关订购信息，请参阅联机使用指南。根据 DIN 19309，本产品可以使用再生纸。

## 材料限制

本产品不含额外添加的汞。

本产品不含电池。

本 HP 产品的焊料中含有铅。

有关回收利用的信息，您可以访问 <http://www.hp.com/go/recycle>，或者联系当地的权威人士或电子产业联盟：<http://www.eiae.org>。

## 材料安全数据表

您可以从 HP LaserJet 耗材网站 <http://www.hp.com/go/msds> 获得材料安全数据表 (MSDS)。

## 延长保修期

HP SupportPack 的服务范围包括 HP 硬件产品和 HP 提供的所有内部部件。硬件维护期为三年，从 HP 产品购买日开始算起。客户必须在购买 HP 产品后的 180 天内购买 HP SupportPack。有关更多信息，请与 HP 客户服务中心联系。另外也请参阅随打印机包装箱附带的支持说明。

## 可提供的备件和耗材

在本产品停止生产后，产品的备件和耗材供应期限至少为 5 年。

## 更多信息

有关 HP 的环境计划，包括：

- 本 HP 产品和许多相关 HP 产品的产品环境简介表
- HP 的环境承诺
- HP 的环境管理系统
- HP 的报废产品退回和回收利用计划
- 材料安全数据表

请访问：<http://www.hp.com/go/environment> 或  
<http://www.hp.com/hpinfo/community/environment>

# Declaration of Conformity

according to ISO/IEC Guide 22 and EN 45014

---

**Manufacturer's Name:** Hewlett-Packard Company  
**Manufacturer's Address:** 11311 Chinden Boulevard  
Boise, Idaho 83714-1021, USA

**Declares that the product**

**Product Name:** HP LaserJet 5100Le  
**Model Number (s):** Q1863A  
**Product Accessory:** All

**Conforms to the following Product Specifications:**

**Safety:** IEC 60950:1991+A1 + A2 + A3 + A4 / EN 60950: +A1 + A2 + A3 + A4 + A11  
IEC 60825-1:1993 + A1 / EN 60825-1 + A11 Class 1 Laser/LED Product

**EMC:** CISPR 22:1993 + A1 + A2 / EN 55022:1994 + A1 + A2 Class B<sup>\*</sup>  
EN 61000-3-2:1995 / A14  
EN 61000-3-3:1995  
EN 55024:1998

FCC Title 47 CFR, Part 15 Class B2 / ICES-003, Issue 3  
AS / NZS 3548:1995 + A1 + A2

## Supplementary Information:

The product herewith complies with the requirements of the EMC Directive 89/336/EEC and the Low Voltage Directive 73/23/EEC, and carries the CE-Marking accordingly.

1. The product was tested in a typical configuration with Hewlett-Packard Personal Computer Systems.
2. This Device complies with Part 15 of the FCC Rules. Operation is subject to the following two Conditions: (1) this device may not cause harmful interference, and (2) this device must accept any interference received, including interference that may cause undesired operation.

\*The product includes LAN (Local Area Network) options. When the interface cable is attached to LAN connectors, the product meets the requirements of EN55022 Class A in which case the following applies:  
Warning: This is a class A product. In a domestic environment this product may cause radio interference in which case the user may be required to take adequate measures.

3. The model number may include an additional suffix letter "R".

**Boise, Idaho USA  
20 December 2001**

---

**Australia Contact:** Product Regulations Manager, Hewlett-Packard Australia Ltd., 31-41 Joseph Street, Blackburn, Victoria 3130, Australia

**European Contact:** Your Local Hewlett-Packard Sales and Service Office or Hewlett-Packard GmbH, Department HQ-TRE / Standards Europe, Herrenberger Straße 130, D-71034 Böblingen (FAX: +49-7031-14-3143)

**USA Contact:** Product Regulations Manager, Hewlett-Packard Company, PO Box 15, Mail Stop 160, Boise, Idaho 83707-0015 (Phone: 208-396-6000)

## 电气规格

### 警告！

电源要求是根据打印机的销售区域而制定的。不要转换操作电压，否则可能会损坏打印机并使产品保修无效。

	110V 机型	220V 机型
电源要求	100-127V (+/-10%) 50/60 Hz (+/- 2 Hz)	220-240V (+/-10%) 50/60 Hz (+/- 2 Hz)
建议用于典型产品的最小电路容量	7.5 A	3.5 A
平均电源消耗 (瓦) - LaserJet 5100	<ul style="list-style-type: none"><li>• 打印 (22 PPM) = 467W</li><li>• 待机 = 33 W</li><li>• PowerSave (省电模式) = 20 W</li><li>• 关机 = 0 W</li></ul>	<ul style="list-style-type: none"><li>• 打印 (22 PPM) = 465W</li><li>• 待机 = 30 W</li><li>• PowerSave (省电模式) = 23 W</li><li>• 关机 = 0 W</li></ul>

上述数值可能会更改，有关最新信息，请访问 <http://www.hp.com/support/lj5100>。

PowerSave (省电模式) 的默认激活时间为 30 分钟。

## 声音排放

上述数值可能会更改，有关最新信息，请访问 <http://www.hp.com/support/lj5100>。

### 声强级

根据 ISO 9296 声明

打印 (22 PPM)	$L_{WA} = 6.8$ 贝尔 (A) [68 dB (A)]
PowerSave (省电模式)	$L_{WA} = 4.4$ 贝尔 (A) [44 dB (A)] 或基本无声

### SPL- 旁观者位置

根据 ISO 9296 声明

打印 (22 PPM)	$L_{pA} = 53$ dB(A)
PowerSave (省电模式)	$L_{pA} = 32$ dB(A) 或基本无声

## 安全声明

### 激光安全声明

自 1976 年 8 月 1 日起，美国食品和药物管理局所属的仪器与放射保健中心 (CDRH) 就开始对制造的激光产品实施规则要求。所有在美国上市的产品都必须遵守此规则。根据 1968 年的健康和辐射控制条例，本打印机符合美国卫生与人类事务处 (DHHS) 辐射性能标准，被定为“1 级”激光产品。由于本打印机内部放射的辐射是完全限制在保护罩和外层护盖中，因此用户正常操作期间激光束不会外泄。

---

#### 警告！

---

使用控制件、进行调整、或执行超出本用户指南具体说明的步骤都可能导致有害辐射泄漏。

### EMI Statement (Korea)

#### 사용자 안내문 (B급 기기)

이 기기는 비업무용으로 전자파장해 검정을 받은 기기로서, 주거 지역에서는 물론 모든 지역에서 사용할 수 있습니다.

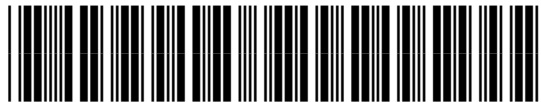




i n v e n t

copyright © 2002  
Hewlett-Packard Company

<http://www.hp.com/support/lj5100>



Q1863-90901