



HP DesignJet 2500CP

Printing Guide for Windows

Adobe, Adobe Illustrator, Adobe Type Manager, ATM, PageMaker, and PostScript are trademarks of Adobe Systems Incorporated or its subsidiaries and may be registered in certain jurisdictions.

MacroMedia and FreeHand are registered trademarks of Altsys Corporation.

Microsoft and MS-DOS are registered trademarks and Windows is a trademark of Microsoft Corporation.

CorelDRAW! is a registered trademark of Corel Systems.

Times and Helvetica are trademarks of Linotype-Hell and/or its subsidiaries. All other brand or product names are trademarks or registered trademarks of their respective holders.

PANTONE® is PANTONE, Inc.'s check-standard trademark for color and is a registered trademark of PANTONE, Inc.

For defense agencies: Restricted Rights Legend. Use, reproduction, or disclosure is subject to restrictions set forth in subparagraph (c)(1)(ii) of the Rights in Technical Data and Computer Software clause at 252.227-7013.

For civilian agencies: Restricted Rights Legend. Use, reproduction, or disclosure is subject to restrictions set forth in subparagraphs (a) through (d) of the Commercial Computer Software Restricted Rights clause at 52.227-19. Unpublished rights reserved under the copyright laws of the United States.

Overview of this HP DesignJet 2500CP Printing Guide for Windows

This HP DesignJet 2500CP Printing Guide for Windows combines several discrete documents into one guide. Each of the separate documents deals with a particular aspect of working with your chosen HP Adobe PostScript environment.

The documents forming this guide are:

- *The Adobe PostScript Printer Driver 3.0 User's Guide*
from page 1 to page 40.
- *Using the HP AdobePS 3.0.1 driver with an HP DesignJet 2500CP printer*
from page 41 to page 46.
- *Using the HP AdobePS 4.1 driver with your HP DesignJet 2500CP printer*
from page 47 to page 56.
- *Windows NT 3.51 HP DesignJet 2500CP driver information*
from page 57 to page 58.
- *Windows NT 4.0 HP DesignJet 2500CP driver information*
from page 59 to page 63.



User Guide

Adobe PostScript™ Printer Driver ^{version} 3.0



© 1995 Adobe Systems Incorporated. All Rights Reserved.

Adobe PostScript Printer Driver for Windows, Version 3.0

This manual, as well as the software described in it, is furnished under license and may only be used or copied in accordance with the terms of such license. The information in this manual is furnished for informational use only, is subject to change without notice, and should not be construed as a commitment by Adobe Systems Incorporated. Adobe Systems Incorporated assumes no responsibility or liability for any errors or inaccuracies that may appear in this book.

Except as permitted by such license, no part of this publication may be reproduced, stored in a retrieval system, or transmitted, in any form or by any means, electronic, mechanical, recording, or otherwise, without the prior written permission of Adobe Systems Incorporated.

Adobe, Adobe Illustrator, Adobe Type Manager, ATM, PageMaker, PostScript, and TypeAlign are trademarks of Adobe Systems Incorporated or its subsidiaries and may be registered in certain jurisdictions. Apple and LaserWriter are registered trademarks of Apple Computer, Inc. IBM, AT, and PS/2 are registered trademarks of International Business Machines Corporation. Microsoft and MS-DOS are registered trademarks and Windows is a trademark of Microsoft Corporation. Ventura Publisher is a registered trademark of

XEROX Ventura Software. CorelDRAW! is a registered trademark of Corel Systems. Times and Helvetica are trademarks of Linotype-Hell and/or its subsidiaries. All other brand or product names are trademarks or registered trademarks of their respective holders.

Written and designed at Adobe Systems Incorporated, 1585 Charleston Road, Mountain View, CA 94039-7900

Adobe Systems Europe Limited, Adobe House, Edinburgh EH11 4DU, Scotland, United Kingdom

Adobe Systems Co., Ltd., Yebisu Garden Place Tower, 4-20-3 Ebisu, Shibuya-ku, Tokyo 150, Japan

For defense agencies: Restricted Rights Legend. Use, reproduction, or disclosure is subject to restrictions set forth in subparagraph (c)(1)(ii) of the Rights in Technical Data and Computer Software clause at 252.227-7013.

For civilian agencies: Restricted Rights Legend. Use, reproduction, or disclosure is subject to restrictions set forth in subparagraphs (a) through (d) of the commercial Computer Software Restricted Rights clause at 52.227-19 and the limitations set forth in Adobe's standard commercial agreement for this software. Unpublished rights reserved under the copyright laws of the United States.

CONTENTS

INTRODUCTION	1
About this manual	2
System requirements.....	2
Using soft fonts with the Adobe Printer Driver	2
 CHAPTER 1: INSTALLING THE SOFTWARE	5
Running the Adobe Printer Driver setup program	5
Installing a PostScript printer from a PPD	7
Configuring the PostScript printer.....	8
Setting up the printer port for your printer.....	8
Installing Port Monitor.....	11
<i>Setting up the PPM software for a parallel port other than LPT1</i>	12
<i>Creating PPM icons for multiple printers attached to your computer</i>	12
 CHAPTER 2: USING THE ADOBE PRINTER DRIVER	15
Using online help.....	15
Changing your printer's setup	16
<i>Displaying the Setup tab dialog</i>	17
<i>Changing printer settings</i>	18
Printing to a file.....	19
<i>Creating a PostScript file from the application with the Print</i> <i>to File check box</i>	20
<i>Using the driver to print to a PostScript file</i>	20
Downloading Type 1 fonts	22
 CHAPTER 3: SUMMARY OF PRINTER SETTINGS	25
Paper tab dialog settings	25
Fonts tab dialog settings.....	27
PostScript tab dialog settings	28
Job control tab dialog settings.....	29
Watermark tab dialog settings.....	30
<i>Edit Watermark dialog settings</i>	31
<i>Add Watermark dialog settings</i>	31

CHAPTER 4: USING THE ADOBE POSTSCRIPT PORT MONITOR	33
APPENDIX: TROUBLESHOOTING	35
INDEX	39

Introduction



Welcome to the Adobe™ PostScript™ Printer Driver—Windows™ Version 3.0. The Adobe Printer Driver works with Adobe PostScript language printers and lets you take full advantage of your printer's features and capabilities. The Adobe Printer Driver can be used instead of the Microsoft® Windows PostScript printer driver that comes with Windows 3.1.

A printer driver is an operating system program that lets application programs communicate with printers. The Adobe Printer Driver translates your application's documents into the PostScript language and sends the PostScript document descriptions to your printer. The driver also provides applications with information about your printer, such as available fonts, paper sizes, and so on.

The Adobe Printer Driver supports both PostScript Type 1 fonts and TrueType fonts within a document. You can use the Adobe Printer Driver to save your documents as PostScript files to send to a service bureau. You can also use it to produce Encapsulated PostScript (EPS) files so that graphic images you create with one application and place in the documents of another application print with the greatest possible resolution.

The Adobe Printer Driver provides the following features:

- Full support for *all* your printer's features, including optional paper trays, duplex (two-sided) printing, and print enhancement technologies
- Maintenance of separate printer settings for each PostScript printer, making it easy to use two or more PostScript printers with the same computer
- Support for PostScript Level 1 and Level 2 printers
- A font downloader utility that lets you manually download PostScript Type 1 fonts to your printer; you can also use the font downloader utility to register font storage devices such as cartridges, disk drives, and CD-ROM drives
- A port-monitoring facility that lets you monitor and control specific activities on PostScript printers that are capable of bi-directional communication

ABOUT THIS MANUAL

This guide explains how to install and use the Adobe Printer Driver with your computer running Windows or Windows for WorkGroups versions 3.1 or 3.11. It also explains how to use the PostScript downloader utility and Port Monitor, which are included in your driver product package. The Appendix gives advice on troubleshooting printer problems.

This guide assumes a basic familiarity with Windows operations and terminology. For instructions on basic Windows operations, see your Microsoft Windows 3.1 documentation.

In this manual, text that you type as part of a procedure appears in **boldface**.

The README file included on the driver program disk contains the latest information about the Adobe Printer Driver. The README file also contains instructions for using the Adobe Printer Driver with your printer model and with specific applications. You can read or print the README file with any word-processing program supported by Windows.

SYSTEM REQUIREMENTS

The Adobe Printer Driver requires the following hardware and software:

- One 5.25-inch floppy-disk drive with 1.2 megabytes (MB) capacity or 3.5-inch drive with 1.44 MB capacity, required for installation only
- Hard disk
- Four megabytes or more of memory
- Microsoft Windows or Windows for WorkGroups, versions 3.1 or 3.11 running in enhanced mode
- MS-DOS® operating system, version 3.3 or higher (version 5.0 or higher is recommended)
- An Adobe PostScript language printer or other Adobe PostScript language imaging device

USING SOFT FONTS WITH THE ADOBE PRINTER DRIVER

You can use soft fonts to increase your font choices beyond the basic set of PostScript language (Type 1) fonts built into your printer. A soft font is a Type 1 font that you install on your computer's hard disk and that is downloaded to your printer when you print a document that uses that font. Soft fonts are available from Adobe Systems Incorporated and other Type 1 font vendors.

To view documents using soft fonts on your computer screen before printing, you must install screen versions of the soft fonts. Soft fonts sold by Adobe come with a program called Font Foundry™, which you can use to make screen versions of all of your soft fonts. However, the best way to make sure your documents look the same on screen as on paper is to use the Adobe Type Manager™ (ATM™) for Windows program. ATM uses Type 1 fonts stored on your computer hard disk to create screen fonts of any size and style on your computer screen as needed. With ATM, installing soft fonts is quick and easy, and you don't have to worry about installing screen versions of fonts at all. ATM also lets you print Type 1 fonts on non-PostScript printers, such as inkjet and dot matrix printers.

Chapter 1: Installing the Software

This chapter explains how to install the Adobe Printer Driver software on your computer and how to set up the driver to work with your PostScript printer.

Installation and setup involve the following steps:

- Running the Adobe Printer Driver setup program
- Installing a PostScript printer from a PostScript Printer Description file (PPD), which the driver uses to give you control of your printer's features
- Configuring the PostScript printer
- Installing the Adobe PostScript Port Monitor software

RUNNING THE ADOBE PRINTER DRIVER SETUP PROGRAM

The Adobe Printer Driver setup program deletes any copies of earlier versions of the Adobe Printer Driver.

Before installing the Adobe Printer Driver, perform the following tasks:

- Make sure that the Microsoft Windows 3.1 program or Windows for WorkGroups version 3.1 or 3.11 is installed on your computer.
- Close all other applications that may be using an earlier version of the driver.
- For safekeeping, make a backup copy of the Adobe Printer Driver disks.

To install the Adobe Printer Driver program:

- 1 Start Windows.
- 2 Make sure the Control Panel window in the Windows Program Manager is closed. Windows will place the PostScript Printers icon used to install PPDs in the Control Panel. To do so, the Control Panel must be closed; it is not sufficient to minimize the Control Panel to an icon.
- 3 Close any applications that may be using an earlier version of the Adobe Printer Driver.
- 4 Insert the Adobe Printer Driver program diskette into your floppy disk drive.
- 5 From the Windows Program Manager, choose File/Run.

6 In the Command Line box, type **a:\setup**, and click OK. Change the designation of the drive containing the program diskette (**b:**, for example), if necessary. The PostScript Printer Driver Setup window appears as setup is initialized. Then a window displaying information about the README file appears. The file README.WRI contains information about the Adobe Printer Driver that you should read before installing the software.

7 Click Read. The README file appears.

8 Choose File/Exit to exit the Write application after you have read the README file. The PostScript Printer Driver Setup window reappears.

9 Click Continue to continue the installation process.

The installation begins. A status window displaying the progress of the copy appears. The Adobe Printer Driver setup program first tries to install the driver files in the WINDOWS\SYSTEM directory.

If the setup program is unable to copy the files to the WINDOWS\SYSTEM directory because that directory is write protected, it displays a message about copying to your Windows directory. To copy the files to your Windows directory, click Continue. To contact a system administrator for assistance, click Exit.

If another version of the Adobe Printer Driver already exists in a read-only WINDOWS\SYSTEM directory, a message explaining this situation appears and the program does not proceed with software setup.

Once the copy has successfully completed, the setup program displays a message instructing you to restart Windows and then to use the PostScript Printers control panel to install printers from a selected PPD.

10 Click Restart Windows. The setup program restarts Windows. The PostScript Printers icon appears in the Control Panel the next time you run the Control Panel. For more information on using the PostScript Printers icon, see the following section.

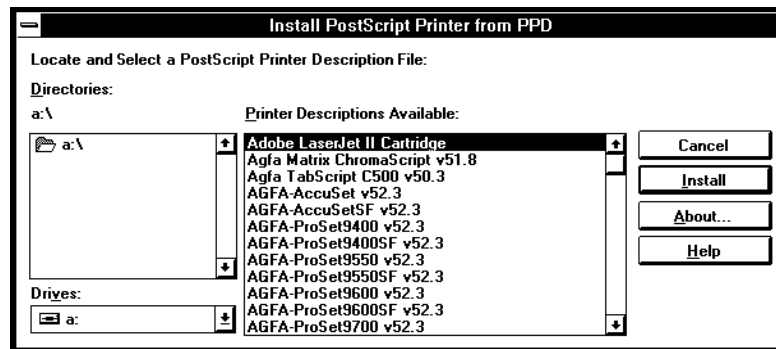
INSTALLING A POSTSCRIPT PRINTER FROM A PPD

The PostScript Printers icon lets you install a PostScript printer from a PostScript Printer Description file (PPD) that you specify. The driver uses the information in a PPD to give you control of all your printer's features.

The Adobe Printer Driver software package includes several diskettes containing alphabetized PPD files. While installing the PostScript printer, the printer driver can help you to find the diskette containing the desired PPD.

To install a PostScript printer from a PPD:

- 1 Insert the diskette that contains the PPD to be installed in a floppy diskette drive.
- 2 From the Windows Program Manager, open the Control Panel and double-click PostScript Printers. The Install PostScript Printer from PPD dialog box appears.

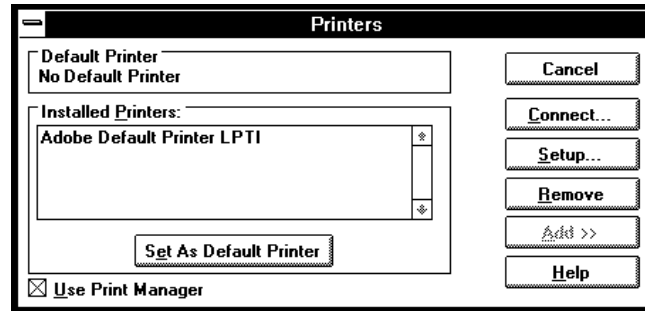


- 3 In the Drives box, select the drive containing the diskette that you just inserted. The Printer Descriptions Available panel in the dialog box displays all the PPDs on that drive.
 - 4 In the Printer Descriptions Available panel, select the PPD that you wish to use to install the PostScript printer. If the PPD that you wish to use is not on that drive, insert diskettes and view the corresponding PPDs until you find the PPD that you wish to install. Select that PPD.
 - 5 Click Install. The PostScript Printers installation software copies the selected PPD to the appropriate directory. It then assigns the printer the first available port that is not already assigned this printer description.
- You can continue to install PPDs by selecting entries in the Printer Descriptions Available panel and clicking Install.
- 6 Click Close when you have installed all the desired PPDs.

CONFIGURING THE POSTSCRIPT PRINTER

The next step is to configure any PostScript printers that you have installed.

- 1 In the Control Panel, double-click Printers. The Printers dialog box appears. This dialog box is similar to the following screen:



- 2 Select the printer that you wish to configure from the Installed Printers list.
- 3 Click Setup. The Setup dialog (the Paper tab dialog, by default) appears. For information on using this dialog to configure printers, see “Changing Your Printer’s Setup” on page 16.
- 4 Configure the printer as desired, and click OK when you are finished.
- 5 To set up the printer you just installed to be the default printer, click the Set As Default Printer button, if desired.
- 6 If your printer is connected to a port other than the one shown (usually LPT1), or if your printer is connected to your computer through a network, you must now set up the port for your printer. For more information, see the next section, “Setting Up the Printer Port for Your Printer.”
- 7 Click Close to close the Printers dialog box, and choose Settings/Exit to close the Control Panel and return to the Program Manager. You have now completed installing the Adobe Printer Driver and configuring the PostScript printer to work with the driver.

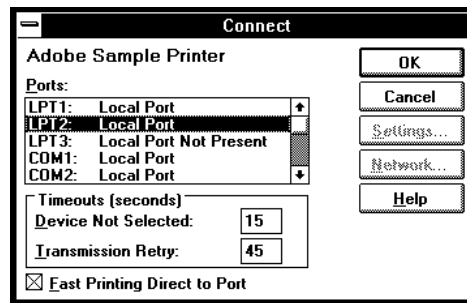
SETTING UP THE PRINTER PORT FOR YOUR PRINTER

After you install the Adobe Printer Driver, the entry for your printer model in the Installed Printers list of the Printers dialog box shows your printer as connected to LPT1. If your printer is connected to a parallel port other than LPT1, to a serial port, or to your computer through a network, you must set up the port for your printer.

The following instructions assume you have already connected your printer to your computer. If you haven't yet connected your printer, do so now. For instructions on how to connect your printer to your computer, see your printer documentation. Make a note of the port to which you connect your printer (LPT1 or COM2, for example).

To set up a port for your printer:

- 1 In the Printers dialog box, select the name of the printer you are setting up in the Installed Printers list.
- 2 Click Connect. The Connect dialog box appears.



- 3 From the Ports list, select the port to which you connected your printer.
- 4 Complete the setup by choosing one of the followings steps:
 - If your printer is connected directly to a parallel port such as LPT2 or LPT3, choose OK to close the Connect dialog box; choose Close to close the Printers dialog box; then choose Settings/Exit to close the Control Panel and return to the Program Manager.
 - If your printer is connected directly to a serial port, follow the steps in the next procedure, “To Complete the Setup for a Serial Port.”
 - If your printer is connected to your computer through a network, follow the steps in the procedure on page 10, “To Complete the Setup for a Network Printer.”

***Note:** Remember always to close the Printers dialog box in the Control Panel to complete any setup procedure using the Adobe Printer Driver software.*

To complete the setup for a serial port:

1 Choose Settings to display the Settings dialog box, and make sure that the settings match the serial communications settings for your printer. Typical values for these settings include

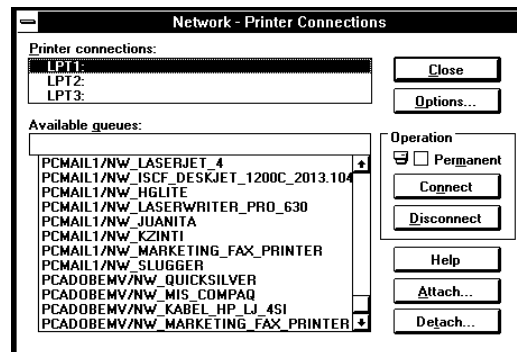
- Baud Rate: This value varies according to your hardware configuration, for example, 9600, 19200, and so on.
- Data Bits: 8
- Parity: None
- Stop Bits: 1

To determine your printer’s serial communications settings, see your printer documentation.

2 When the communications settings in the Settings dialog box match your printer settings, choose OK to close the Settings dialog box, OK to close the Connect dialog box, Close to close the Printers dialog box, and then Settings/Exit to close the Control Panel and return to the Program Manager.

To complete the setup for a network printer:

1 Choose Network to display the Network – Printer Connections dialog box.



2 Choose the network path to your printer.

For instructions on connecting to a network printer, see your Windows documentation or network manager. After you have selected a network path to the printer, you are done.

3 Choose Close to close the Network – Printer Connections dialog box, Close to close the Printers dialog box, and Settings/Exit to close the Control Panel and return to the Program Manager.

INSTALLING PORT MONITOR

This section describes how to install the Adobe PostScript Port Monitor (PPM) software that comes in the Adobe Printer Driver package. It also shows you how to set up the PPM software for a port other than LPT1 and how to create PPM icons for other bidirectional printers attached to your computer.

***Note:** Only install PPM if your printer has bidirectional capability. For some printers, you may have to turn on the bidirectional mode in the front panel, usually via the Advanced Functions or Bidirectional option. For more information, see your printer documentation.*

To install Adobe PostScript Port Monitor:

- 1 Make sure the printer you wish to use is directly connected to a parallel port of a local computer running Windows or Windows for WorkGroups, and that you have turned on the bidirectional mode, if necessary.
- 2 Insert the PostScript Port Monitor Setup disk into your a: or b: drive.
- 3 From the Windows Program Manager, choose File/Run.
- 4 In the Command Line box, type **a:\setup**, and click OK. Change the designation of the drive containing the program diskette, if necessary. The Port Monitor Setup window appears.
- 5 Click Continue to continue the installation process. A window displaying information about the README file appears. The file README.WRI contains information about Port Monitor that you should read before installing the software.
- 6 Click Read. The README file appears.
- 7 Choose File/Exit to exit the Write application after you have read the README file. The Port Monitor Destination window appears.
- 8 Click Continue to copy the Port Monitor software into the default directory PORTMON, or change the name of the directory and click Continue. A status window displaying the progress of the copy appears. Once the copy is complete, the Program Group Options window appears.
- 9 Click Continue to add Port Monitor to your StartUp Group.
- 10 Click OK once the installation has successfully completed.

Note: You may choose to economize desktop space and display printer information using the Port Monitor icon only. If you use the Port Monitor icon, the Windows Task List displays the brief summary status message that appears below the Port Monitor icon, instead of the expected name of the application task, "Port Monitor."

Setting up the PPM software for a parallel port other than LPT1

If your printer is configured for an LPT n port other than LPT1, to monitor your printer you need to change your StartUp Group Configuration to reflect that LPT n port.

To set up Port Monitor to monitor a printer connected to the LPT n port:

- 1 Open the StartUp Group in the Program Manager window by clicking the StartUp icon. The StartUp window appears.
- 2 Click the Port Monitor icon.
- 3 Choose File/Properties. The Properties dialog box appears.
- 4 In the Description field, type a name that will help you remember with which port this icon is associated, for example, "Port Monitor LPT n ." The name you specify in this field will appear below the Port Monitor icon.
- 5 In the Command field, change LPT1 to LPT n . The port designation appears after the pathname to the Port Monitor software.
- 6 Click OK. If you added Port Monitor to your StartUp Group during installation, in future Windows sessions PostScript Port Monitor automatically becomes active for the specified port when you start Windows. To monitor the specified port in the current Windows session, double-click the Port Monitor icon.

Creating PPM icons for multiple printers attached to your computer

You might have connected more than one bidirectional printer to the parallel ports in your computer. To use multiple printers in a work environment, you must create a Port Monitor icon for each printer.

To create a Port Monitor icon for a second printer:

- 1 Click the Port Monitor icon.
- 2 Choose File/Copy. The Copy Program Item dialog box appears.

- 3 Select the group to contain the new program item, and then click OK. You will probably want to leave the new icon in the same group in which the original Port Monitor icon resides, normally the StartUp Group.
- 4 Click File/Properties. The Program Item Properties dialog box appears.
- 5 In the Description field, type a name that will help you recognize different Port Monitor icons. You might want to include the type of printer associated with this icon. The name that you specify in this field appears below the icon.
- 6 In the Command field, change the port designation, as needed, for example, from LPT1 to LPT2.
- 7 Click OK. If you added Port Monitor to your StartUp Group during installation, in future Windows sessions PostScript Port Monitor automatically becomes active for the specified port when you start Windows. To monitor the specified port in the current Windows session, double-click the Port Monitor icon.

Chapter 2: Using the Adobe Printer Driver

This chapter explains how to change printer settings, how to create PostScript files for your documents, and how to manually download Type 1 fonts to your printer. For brief descriptions of the printer settings, see Chapter 3, “Summary of Printer Settings.” For detailed descriptions of the printer settings, see online help for the driver tab dialogs and dialog boxes.

USING ONLINE HELP

Online help for the Adobe Printer Driver contains detailed information intended to supplement this user guide. Online help for the driver covers the following subjects:

- Setting up the driver for fast printing
- Using TrueType fonts with a PostScript printer
- Substituting PostScript fonts for TrueType fonts
- Starting the PostScript downloader utility
- Setting up the printer to accept binary data
- Printing to a file
- Using the driver to print to a file
- Setting up the driver to create PostScript files for a remote printer
- Sending a PostScript file to a printer
- Creating an Encapsulated PostScript (EPS) file
- Ensuring that PostScript files are portable
- Using soft fonts with the Adobe Printer Driver
- Using type cartridges and font disks
- Downloading the PostScript header once per session
- Downloading the PostScript header with AUTOEXEC.BAT
- Changing the communications port to which a printer is attached
- Setting up the driver for an IBM Personal Pageprinter
- Using the Error Handler to troubleshoot printing problems

Online help for the driver also contains detailed descriptions of all the printer settings, and many troubleshooting tips and techniques.

To display online help, choose the Help button in any of the driver dialog boxes. To see the list of help topics, choose the Contents button in the Help window; click any topic title to display help for that topic.

CHANGING YOUR PRINTER'S SETUP

When you install the Adobe Printer Driver for your printer, the driver selects settings for the printer that meet the needs of most users and most applications. Many users can install the driver for their printers and never have to think about changing their printer settings. However, in some situations, you might want to change your printer's setup:

- To select print options such as Paper Size, Paper Source, Scaling, Orientation, and Number of Copies that are unavailable in your application's Print or Print Setup dialog boxes

Caution: Use your application to set any printer settings you can set with your application (such as number of copies). Use the driver tab dialogs only to set printer options you cannot control with your application's Print or Print Setup dialog boxes.

- To download Type 1 fonts to your printer manually, which can speed printing
- To download the PostScript header just once when you turn on your computer, which speeds printing to a printer that is always connected only to your computer
- To take advantage of your printer's binary communication feature (if the printer has this feature), which speeds printing
- To create PostScript files that can be printed on remote printers—at a service bureau, for example
- To create Encapsulated PostScript files that capture images from one application that can be placed in the documents of another application
- To download the PostScript Error Handler to your printer to help troubleshoot printing problems

Many print options you set with the Adobe Printer Driver apply to *all* documents printed from *all* applications. If you use one of the Setup tab dialogs to change these options for a single document, you must return to the tab dialog to restore the options to their original settings before printing another document.

Displaying the Setup tab dialog

You can display the Adobe Printer Driver Setup dialog in a number of ways:

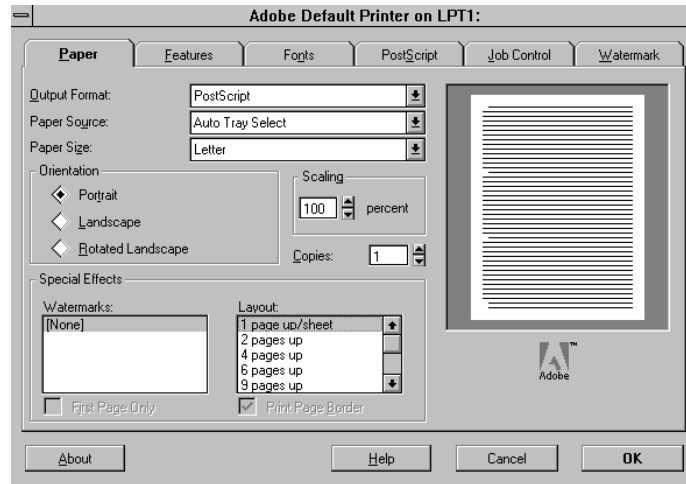
- **From the Control Panel.** You can use the Printers dialog box in the Control Panel to display the Setup dialog for every printer attached to your computer. From the Program Manager, double-click the Control Panel icon to display the Control Panel; then double-click the Printers icon to display the Printers dialog box. Select the printer that you wish to set up from the Installed Printers list and click Setup to display the Setup dialog for the printer. You can also use the Printers dialog box to select a default printer, to turn the Print Manager on and off, and to connect your printer to a different port. To complete the Default Printer setup and port connection, you must close the Printers dialog box and the Control Panel.
- **From your application.** Most applications have a Print Setup command on their File menus. Choosing this command usually displays the standard Print Setup dialog box. If you are using more than one printer, you can use the Print Setup dialog box to select the printer you want to set up. After selecting the printer, choose the Options (or Setup) button to display the Adobe Printer Driver's Setup dialog.

Note: The names of the commands and buttons used to display the printer setup dialog box vary from application to application. See your application's documentation for the precise command and button names used by your application.

- **From the Print Manager.** You can use the Print Manager dialog box to display the setup dialog box for every printer attached to your computer. From the Program Manager, double-click the Print Manager icon to display the Print Manager. Then select the printer you want to set up from the list of Printers. Finally, choose the Setup command from the Options menu to display the Setup dialog for your printer.

Changing printer settings

You change printer settings with the following Setup dialog:



The Setup dialog contains the following tabs:

- *Paper*. This tab displays the Paper tab dialog (the default for the Setup dialog). This tab dialog lets you specify paper source and size, orientation of the printout, scaling, and special effects. It provides a Custom Paper button if your printer supports custom paper sizes. The Custom Paper option lets you control the size of the print image produced by your application.
- *Features*. This tab displays the Features tab dialog, which contains controls for additional printer features. These controls change from printer to printer, but typically include such features as optional paper trays and duplex (two-sided) printing. The Features tab button is available only for printers that support additional features.
- *Fonts*. This tab displays the Fonts tab dialog, which lets you control the way the driver prints TrueType fonts that you use in your documents. The driver can either substitute available PostScript fonts for TrueType fonts or automatically create PostScript versions of TrueType fonts and download them to the printer when you print. The Fonts tab dialog provides a Font Downloader button that displays the Adobe PostScript Font Downloader dialog box. The Font Downloader lets you specify the fonts to download to the printer and the destination device. It also lets you create and delete font groups.

- *PostScript*. This tab displays the PostScript tab dialog, which lets you control features such as color printing, the communications protocol, and PostScript Level 2 features.
- *Job Control*. This tab displays the Job Control tab dialog, which lets you control when the PostScript header and the PostScript Error Handler are sent to your printer, for example.
- *Watermark*. This tab displays the Watermark tab dialog (only for PostScript Level 2 printers). This feature lets you specify the font size and the style of text, such as *Draft* or *Confidential*, to print across a page.

For a brief description of the printer settings you can control with the driver setup dialog boxes, see Chapter 3, “Summary of Printer Settings.”

PRINTING TO A FILE

As an alternative to printing your document on your printer, you can save a PostScript language description of your document as a disk file. PostScript language descriptions of documents can be useful for creating document archives and printing documents without using the application that created them (at a service bureau, for example).

Another use of printing to a file is to create an Encapsulated PostScript (EPS) file. You can use EPS files to export single pages from one application to another. EPS files can include any combination of text, graphics, and images, but they do not describe complete documents. For example, by saving an Encapsulated PostScript file, you can insert a page of a document created with one application as an illustration in a document created by another application.

***Note:** If you select the Send Data in Binary option in the PostScript tab dialog, the PostScript files can include binary characters, which may make them unsuitable for use with word processors and certain telecommunication services applications. If you intend to transfer the PostScript file over telecommunication services, the services must fully support binary data transfer, as needed.*

Two methods let you create PostScript files:

- If your application’s Print dialog box has a Print to File check box, place a check in this check box.
- If your application’s Print dialog box does not have a Print to File check box, make temporary changes to your printer connection.

Note: Make sure that the printer settings in the PostScript tab dialog will produce a file that prints correctly on your destination printer. For example, select the Use PostScript Level 2 Features option if you are sure that you will be printing the file only on Level 2 printers. If you plan to use a printer that does not support binary communication, disable the Send Data in Binary option. Selecting the Optimize for Portability option creates PostScript files that print successfully from different applications on a wide variety of printers and imaging devices; Adobe Systems recommends that you enable this option.

Creating a PostScript file from the application with the Print to File check box

Follow these steps to create a PostScript file with the Print to File check box:

- 1 Start your application and open the document.
- 2 Choose Print from the File menu. The Print dialog box appears.
- 3 Click the Print to File check box and choose OK. The Print To File dialog box appears.
- 4 Enter a pathname and filename for the file. (If you don't specify a pathname, your PostScript file is placed in your application's default directory.) Then choose OK. The file is created and you are returned to your application.

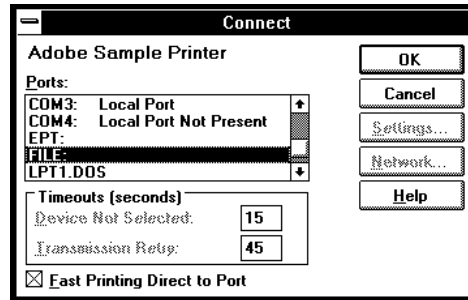
Using the driver to print to a PostScript file

Using the driver to print to a PostScript file is a three-step process. First you go to the Printers dialog box of the Control Panel to change your printer connection, then you use your application to create the file, and then you reset your printer connection for normal printing.

To change your printer connection to print to a PostScript file:

- 1 From the Program manager, open the Control Panel and double-click the Printers icon. The Printers dialog box appears.
- 2 If it is not already selected, select the name of the PostScript printer that you are using from the Installed Printers list. Then select Connect. The Connect dialog box appears.

3 Select FILE from the Ports list box.



4 Choose OK to close the Connect dialog box and return to the Printers dialog box.

5 Choose Setup. The driver Setup dialog box appears.

6 After changing (or confirming) your printer settings, choose OK to close the Setup dialog box.

7 Choose Close to close the Printers dialog box; then choose Settings/Exit to close the Control Panel.

Your computer is now set up to create PostScript files when you choose the Print command from a Windows application.

To print to a PostScript file:

1 Start your application and open the document for which you want to create a PostScript file.

2 If needed, select the Print Setup command from the File menu, change the settings as appropriate, and select OK.

3 Select the Print command from the File menu. Your application's Print dialog box appears.

4 Choose OK. A dialog box appears that asks you to name the file. Enter a path-name and filename for the file. If you don't specify a pathname, the PostScript file is placed in your application's default directory.

5 Choose OK. The PostScript file is created, and you are returned to your application.

After creating PostScript files, you need to restore your original printer setup options before you can use your printer again.

To restore your printer connection options after printing to a PostScript file:

- 1 From the Program Manager, open the Control Panel; then double-click the Printers icon. The Printers dialog box appears.
- 2 If it is not already selected, select the printer model on FILE entry from the Installed Printers list. Then choose Connect. The Connect dialog box appears.
- 3 In the Ports list box, select the port to which your PostScript printer is connected. Then choose OK. The Connect dialog box closes and you are returned to the Printers dialog box.
- 4 If you changed any printer settings to print to file, choose Setup to display the Setup dialog. Undo any changes you made and then choose OK. The Printers dialog box appears.
- 5 Select OK to close the Printers dialog box; then choose Settings/Exit to close the Control Panel.

DOWNLOADING TYPE 1 FONTS

The Adobe Printer Driver automatically downloads any Adobe Type 1 fonts from your hard disk to your PostScript printer's memory as needed for each document that you print. You can also use the Font Downloader to download fonts manually when you don't want to download fonts for each document. Manually downloading fonts can speed printing. Note that to start the Font Downloader, your computer must be connected to a printer.

***Note:** All PostScript printers have a set of built-in fonts, called resident fonts, which do not need to be downloaded. For information about resident fonts, see the documentation on your printer or PostScript Cartridge.*

The size of your printer memory and the number and frequency with which fonts are used in a document determine whether to download automatically or manually.

When an application prints a document containing a font that is not resident in your printer, the driver automatically downloads the font with the document. The printer clears downloaded fonts from the printer memory after the document prints. This means that each time you print a document that contains fonts not resident in the printer, the fonts must be downloaded.

In contrast, when you manually download a Type 1 font with the downloader, the font remains in printer memory until you turn off or restart the printer or when memory limitations are exceeded. Manually downloading frequently used

fonts therefore reduces printing time because the fonts do not have to be sent to the printer each time they are used. Keep in mind, however, that the manually downloaded fonts reduce the overall amount of memory available for printing and so may affect the printing of documents that do not contain the downloaded fonts.

In addition to downloading fonts, you can also use the Downloader to

- Install a hard disk (or other font storage device) attached to your printer to store the fonts for use by Windows applications
- Format a blank hard disk (or magnetic cartridge) for use as a font storage device
- Manually download soft fonts to a hard disk (or a magnetic cartridge) attached to your printer
- Perform various printer management tasks, such as listing and removing downloaded fonts, manually downloading PostScript language document descriptions, clearing the printer font cache, and resynchronizing your printer with Windows (when connected via serial communications)

Choose the Help button on the Downloader dialog box for instructions on performing these tasks.

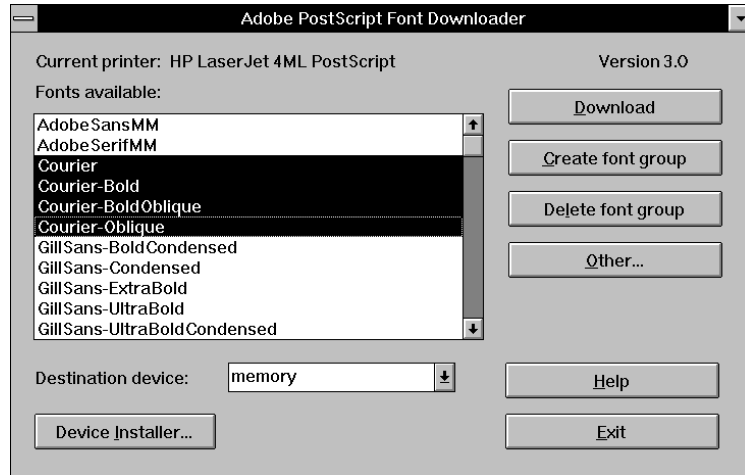
To manually download Type 1 fonts:

- 1 From the Program Manager, open the Control Panel; then double-click the Printers icon. The Printers control panel appears.
- 2 If it is not already selected, select the PostScript printer entry from the Installed Printers list; then choose Setup. The Setup dialog (the Paper tab dialog, by default) appears.

***Note:** You can also open the Setup dialog from within many Windows applications. Check your application documentation to see if you can change your printer setup from within your application.*

- 3 From the Setup dialog, select the Fonts tab. The Fonts tab dialog appears.

4 Choose Font Downloader. The Adobe PostScript Font Downloader dialog box appears.



5 Select the fonts you want to download from the Fonts Available list.

6 Choose Download. The downloader informs you of its progress as it downloads fonts.

Note: During downloading, you can use other applications, but you will not be able to print.

7 After you have finished downloading fonts, choose Exit. The program returns you to the Fonts tab dialog.

8 Choose OK to close the dialog, choose Close to close the Printers dialog box, and then choose Settings/Exit to close the Control Panel.

Chapter 3: Summary of Printer Settings

This chapter briefly describes all the printer settings you can control with the driver tab dialogs and dialog boxes. You can access the Paper, Features (if available on your printer), PostScript, Fonts, Job Control, and Watermark tab dialogs from each tab dialog.

This chapter does not describe the printer settings available in the Features tab dialog; these settings vary from printer to printer. For a description of the printer settings in the Features tab dialog, see your printer documentation.

PAPER TAB DIALOG SETTINGS

The following table summarizes the printer settings in the PostScript Printer Setup dialog, by default the Paper tab dialog.

Setting	Description
Output Format ▼	Selects either PostScript or Encapsulated PostScript. Use PostScript for normal printing. Use Encapsulated PostScript to create a one-page file that can be placed in a document of an application that accepts Encapsulated PostScript images.
Paper Source ▼	Selects the paper tray or manual input slot to use as the paper source.
Paper Size ▼	Specifies the paper size. Select the size that matches the paper in the current paper source. Printers that support user-defined paper sizes have a custom-paper option (the name of this option varies with your specific printer). Selecting the custom-paper option enables the Custom Paper button.
Orientation: <input checked="" type="radio"/> Portrait <input checked="" type="radio"/> Landscape <input checked="" type="radio"/> Rotated Landscape	Selects the orientation of the printed page. Portrait prints text and images on tall pages. Landscape prints text and images on wide pages. Rotated Landscape also prints text and images on wide pages but reverses the top and bottom of the page.
Scaling ___ percent	Shrinks or enlarges the print image by the specified percentage. You can scale the image from 10 percent to 400 percent.
Copies	Specifies the number of copies of each document page to print.
Special Effects: Watermarks <input type="checkbox"/> First Page Only	Selects special effects for your printout. Watermarks lists the names of available watermarks. First Page Only prints the watermark on the first page only. Layout lists the options for arranging pages on paper; between 1 and 16 document pages can appear on a single printer page. Print Page Border prints borders around each document page if you are printing more than one document page on a printed page.
Layout <input type="checkbox"/> Print Page Border	

In addition to these printer settings, the Paper tab dialog contains the Custom Paper button, which is available only if you choose the Custom Paper option in the Paper Size menu. Choosing the Custom Paper button displays the Custom Paper dialog box. The following table summarizes the printer settings in the Custom Paper dialog box.

The values you set for width and height are specific to the Portrait orientation. The relative width and height of a page might appear to change if you set the Orientation value to Landscape or Rotated Landscape, where the Landscape height reflects the Portrait width value and the Landscape width reflects the Portrait height value.

Setting	Description
Units: <input checked="" type="radio"/> Inches <input type="radio"/> Millimeters	Tells the driver whether to interpret the Width and Height values as inches or millimeters.
Width	Specifies the paper width in either inches or millimeters, depending on the Units setting.
Height	Specifies the paper height in either inches or millimeters, depending on the Units setting.

FONTS TAB DIALOG SETTINGS

Choosing the Fonts tab button displays the Fonts tab dialog. The following table summarizes the printer settings in the Fonts tab dialog.

Setting	Description
Send TrueType Fonts to This Printer as: ▼	<p>Tells the driver what kind of PostScript fonts to create for TrueType fonts. Select one of these options:</p> <ul style="list-style-type: none"> • Type 1 (to synthesize outline PostScript fonts) • Type 3 (to synthesize bitmapped PostScript fonts) • Type 42 (to package TrueType fonts for the PostScript printer) • Don't Send (to use TrueType fonts that are resident in the printer or are supplied by print-manager software) <p>The Type 42 option is available only for printers that support Type 42 fonts. Type 42 is an encapsulated PostScript TrueType outline, which improves printing of TrueType fonts.</p>
<input type="checkbox"/> Substitute PostScript Fonts for TrueType Fonts on This Printer	<p>When checked, tells the driver to substitute PostScript fonts available to the printer for TrueType fonts. The driver uses the TrueType Substitutions table to determine which PostScript font to use for each TrueType font installed on your system. Substituting appropriate PostScript fonts for TrueType fonts speeds printing (especially when the PostScript fonts are resident in the printer).</p>
TrueType Substitutions for All Printers	<p>This table lists all the TrueType fonts installed on your system, and for each TrueType font, shows which PostScript font is substituted for the TrueType font. This table is used only when you select the "Substitute PostScript Fonts for TrueType Fonts on This Printer" option.</p>
For This TrueType Font:	<p>Lists all the TrueType fonts installed on your system.</p>
Substitute This Font: ▼ Use Defaults Button	<p>Lists the PostScript fonts that are substituted for the TrueType fonts. Each drop-down list box lists all the PostScript fonts available to the printer. PostScript fonts available to the printer include all the fonts resident in the printer's ROM, as well as all the Type 1 soft fonts installed on your system. Each drop-down list box also contains a Send As option. The Send As option is the option currently selected in the Send TrueType Fonts to This Printer As drop-down list box. The Use Defaults button restores the original PostScript font substitutions.</p>
Font Downloader Button	<p>Displays the Adobe PostScript Font Downloader dialog box that lets you specify the fonts to download to a specified printer destination device.</p>

POSTSCRIPT TAB DIALOG SETTINGS

Choosing the PostScript tab button displays the PostScript tab dialog. The following table summarizes the printer settings in the PostScript tab dialog.

Setting	Description
Performance Options:	
<input type="checkbox"/> Use PostScript Level 2 Features	Tells the driver to use PostScript Level 2 features when printing documents. For printers that support PostScript Level 2, using Level 2 features speeds printing.
<input type="checkbox"/> Send Data in Binary	Tells the driver to send data to the printer in a binary format. The printer must be set up to receive binary data. For printers that support the binary data format, sending data in binary format speeds printing. You might need to set up some printers to receive binary data with the Send Mode button in the Job Control tab dialog. If so, see the Send Mode description in the Job Control tab dialog.
Color Options:	
<input type="checkbox"/> Send Full Color Data	Tells the driver to print full color bitmaps in color on a color printer. Turn this option off only if you have a black-and-white printer or are sending a 24-bit bitmap to your printer.
<input type="checkbox"/> Match Colors Across Printers	Tells the driver to use the color matching feature with PostScript Level 2 printers. The color matching feature slows printing somewhat, but produces consistent colors on different Level 2 PostScript printers and gives results closer to the on-screen image.
PostScript Timeout Values:	
Job Timeout – Seconds	The maximum number of seconds that the printer will spend printing a document before canceling the print job. A value of zero means that the job is never canceled. If your printer is shared (for example, on a network), do not specify a value of 0.
Wait Timeout – Seconds	The maximum number of seconds that the printer will wait for Windows to send data before canceling the print job. A value of zero means that job is never canceled. If your printer is shared (for example, on a network), do not specify a value of 0.
Margins:	
<input checked="" type="radio"/> Default	Default tells the driver to accurately report the printable area to the application. Most applications work best with the Default option.
<input type="radio"/> None	None tells the driver to report the size of the paper. Choose None only if an application is printing pages with the edges clipped.
Protocol Options:	
<input checked="" type="radio"/> Default – Serial/Parallel	Default tells the driver to begin and end print jobs with Ctrl-D. Use this option if your printer is connected directly to your computer through a serial or parallel communications port, or across most network types.
<input type="radio"/> None (AppleTalk)	None tells the driver not to end print jobs with Ctrl-D. Use this option if your printer is connected to your computer through an AppleTalk network.
PostScript Performance:	
<input checked="" type="radio"/> Optimize for Speed	Optimize for Speed tells the driver to build PostScript document descriptions that print as fast as possible but that might not print successfully on printers with limited memory.
<input type="radio"/> Optimize for Portability	Optimize for Portability tells the driver to build PostScript document descriptions that print successfully on many different printers. Use Optimize for Portability if you have a spooler or document manager that can interpret the data and allows sophisticated tasks, such as reversing page order or printing only parts of a document.

JOB CONTROL TAB DIALOG SETTINGS

Choosing the Job Control tab button displays the Job Control tab dialog. The following table summarizes the printer settings in the Job Control tab dialog.

Setting	Description
Printer Mode: <input checked="" type="checkbox"/> ASCII Mode <input checked="" type="checkbox"/> Binary Mode Send Mode Button	<p>Tells the driver whether your printer is set up to receive data in the ASCII format or binary format. The driver sends instructions that set up your printer to accept either ASCII or binary data when you choose the Send Mode button.</p> <p>These controls are available only for printers that can accept data in the binary format and that respond to mode-change instructions from the driver. Some printers accept only ASCII format or automatically switch between ASCII and binary format.</p> <p>When you set up your printer to accept binary data, remember that you must also select the Send Data in Binary option in the PostScript Options dialog box.</p>
PostScript Header: <input checked="" type="checkbox"/> Download Each Job <input checked="" type="checkbox"/> Already Downloaded Download Button	<p>The PostScript header contains instructions that a PostScript printer needs to print documents created by the driver. If your printer is connected directly to only your computer, you can save time by choosing the Download button to send the PostScript header only once when you switch on your printer.</p> <p>Download Each Job tells the driver to send the PostScript header with every document.</p> <p>Already Downloaded tells the driver not to send the PostScript header with documents.</p> <p>Download immediately sends the PostScript header to the printer, where it resides until you restart the printer. When you choose Download, the Adobe Printer Driver automatically turns on the Already Downloaded button.</p>
Error Handler: <input type="checkbox"/> Send Error Handler with Each Job	<p>Tells the driver to send a special PostScript error handler with every document you print. The error handler prints a page with a PostScript error message when a document fails to print.</p>
Font Control: <input type="checkbox"/> Do Not Download Fonts	<p>This advanced feature tells the driver not to download soft fonts when printing documents. Use this option <i>only</i> if you know that the fonts you use in your documents are always available to your printer (for example, if you have a Font Folio disk attached to your printer).</p>

WATERMARK TAB DIALOG SETTINGS

Choosing the Watermark tab button displays the Watermark tab dialog, which lets you define new watermarks and edit and delete existing watermark definitions. The Watermark tab dialog is available only for PostScript Level 2 printers. The following table summarizes the printer settings in the Watermark tab dialog.

Setting	Description
Select a Watermark	Lists the available watermark definitions, which you can select for editing or deletion.
Edit	Displays the Edit Watermark dialog box. For a summary of its features, see the following section, "Edit Watermark Dialog Settings."
Add	Displays the Add Watermark dialog box. For more information, see "Add Watermark Dialog Settings" on page 31.
Delete	Deletes the watermark definition selected in the Select a Watermark box.
Display Area	This bitmap displays a 1-up, portrait image of what the page will look like when printed.

Edit Watermark dialog settings

Choosing the Edit button in the Watermark tab dialog displays the Edit Watermark dialog box. The following table summarizes the printer settings in the Edit Watermark dialog box.

Setting	Description
Text	Displays the text of the watermark selected in the Select a Watermark box and lets you edit it.
Font	Lists all the TrueType fonts, ATM fonts, and the 4 base PostScript fonts either that reside in the printer or that you can download to the printer.
Size	Lets you specify a font size between 7 and 600 points.
Style	Lets you specify a style for the font: Regular, Bold, Bold Italic, and Italic when available.
Print in Foreground	Tells the printer to print the watermark in the foreground rather than in the background (the default). In some applications, for example, graphic images might cover up watermarks printed in the background. If you cannot see the watermark on the printed page, choose this option.
Print Outline Only	Tells the printer to print only the outline of the watermark and not to fill in the characters of the watermark. Choose this option if the watermark is covering up graphic images in your document.
Angle	Lets you specify the angle at which the watermark will display on the page.
Color	Lets you specify red, green, and blue values for the color in which the watermark is printed. Choose Color brings up a Color dialog box that lets you view and select a color for the watermark.
Position Automatically Center Watermark Position Relative to Center	Tells the driver how to position the watermark. Automatically Center Watermark centers the watermark on the page. Position Relative to Center lets you specify x and y coordinates for the watermark relative to the center.

Add Watermark dialog settings

Choosing the Add button in the Watermark tab dialog displays the Add Watermark dialog box. The Add Watermark dialog box has the same features as the Edit Watermark dialog box. For information on the Add Watermark features, see “Edit Watermark Dialog Settings.”

Chapter 4: Using the Adobe PostScript Port Monitor

This chapter explains how to access information on using the Adobe PostScript Port Monitor (PPM) for monitoring and controlling your printers that support the bidirectional communications feature. The bidirectional communications feature is the capability of a printer to communicate information about printer jobs and status to the computer. To use PPM effectively, the printer must be able to communicate bidirectionally, it must be configured to do so, and it must be connected to a parallel port on the computer that will use PPM to display job and printer status.

If you do not have a bidirectionally capable printer that is connected to a parallel port on your computer, PPM provides limited printer monitoring, such as on/off status of the printer and the name of the document being printed.

You will be unable to use the Adobe PostScript Port Monitor in environments where the printer is connected

- To a Novell network
- Via third-party software to an AppleTalk network
- Over Microsoft Windows for Workgroups that are sharing a printer with the computer to which it is connected, in which case only the computer directly attached to the printer can view printer status information

Also, in a few network environments—for example, on LANtastic 3.x networks—that print software, the Fast Printing Direct To Port option in the Control Panel needs to be turned off. If you do turn off the Fast Printing Direct To Port check box, you will be unable to use Port Monitor because PPM requires this option to be turned on.

The Adobe PostScript Port Monitor online help gives more details on these environments and on using the product.

Online help for Port Monitor includes the following how-to topics:

- Viewing various types of printer status
- Pausing, resuming, and canceling printing
- Turning off status processing
- Getting printer information
- Choosing the way the program displays printer status
- Choosing the type of sound to alert you to errors
- Setting up Port Monitor if your printer is connected to a port other than LPT1
- Creating a Port Monitor icon for a second printer

In addition to troubleshooting techniques and tips, the online help for Port Monitor also contains information on the two Port Monitor windows:

- PostScript Port Monitor Main Window
- Printer Information Dialog Box

To display online help, choose the Help button in any of the dialog boxes. To see the list of help topics, choose the Contents button in the Help window; click any topic title to display help for that topic.

Appendix A: Troubleshooting

This appendix offers solutions to problems you might encounter using the Adobe Printer Driver.

When the Adobe Printer Driver detects a problem, it displays an alert message describing the problem and telling you how to correct the problem. If you receive an alert message, follow any instructions provided in the message.

If you have a problem but do not receive an alert message or the alert message does not include any instructions, look through the following list of problems to find the solution. If you don't find a description of your problem in this appendix, look at the troubleshooting topics in online help for the Adobe Printer Driver.

To display the list of troubleshooting topics described in online help:

- 1 Display help for any driver tab dialog or dialog box by choosing the Help button.
- 2 In the Help window, choose Contents. A list of topics is displayed.
- 3 Scroll down to the bottom of the topics and click the line "Click this line to see the list of troubleshooting topics." The list of troubleshooting topics is displayed.
- 4 Click any topic to see the help for that topic.

If after checking the troubleshooting topics in this appendix and online help you still need help, contact your printer manufacturer for help.

You try to add an unlisted printer using the Printers Control Panel and receive an error message

Problem: When trying to install the Adobe Printer Driver software using the installation procedures for earlier versions of the Adobe Printer Driver or other products, you receive the message "The file OEMSETUP.INF does not exist in this directory."

Solution: You must use the current installation procedures to install this version of the Adobe Printer Driver and PostScript printers. To install using the correct procedure, follow all the instructions in "Installing the Software" on page 5.

Your printer isn't working at all

Problem: You've installed the Adobe Printer Driver and set up the driver for your printer but your printer isn't working. A number of problems can cause your printer to fail to print:

- Your printer is not turned on.
- Your printer is not connected correctly to your computer or network.
- Your printer is not selected as the default printer in the Printers dialog box (displayed from the Control Panel).
- The port you selected in the Printer-Connect dialog box is *not* the port to which you connected your printer.
- For printers connected to a serial communications port, the printer setup does not match the Windows port setup. (For example, your printer is set up to operate at 1200 Baud and the Windows Port Baud Rate is set to 9600 Baud.)
- The Adobe Printer Driver printer control settings do not match your printer's setup. (When this happens, your printer prints a page with a short description of the problem.)
- You left the output option set to Encapsulated PostScript after creating Encapsulated PostScript files.
- You did not return to the Program Manager after specifying the printer setup.
- You specified the default printer incorrectly. You can set a default printer in several different places, including the Printers dialog box of the Control Panel, an application's Print Setup dialog box, and an application's Print dialog box.
- Your printer is broken.

Solution: Check for these problems in the preceding order. If you cannot correct the problem, carefully repeat the installation instructions in your printer documentation. Then carefully check the Adobe Printer Driver printer control settings to make sure they match your printer's setup. If the printer still does not work, contact your printer dealer or printer manufacturer for help.

Printer stops printing

Problem: You try to print a document but the printer stops printing before the entire document has printed. A number of problems can cause your printer to stop printing:

- The Print Manager requires more memory or disk space than is available.

- Your printer requires more memory to print a complicated page than is available.
- Your printer encounters a PostScript language error while interpreting the PostScript language description of your document.
- The printer control settings of the Adobe Printer Driver do not match your printer's setup. When this happens, the printer prints a page with a short description of the problem.
- The output from the application is incorrect or incomplete.

Solution: If you suspect the problem is with the Print Manager, turn off the Print Manager (from the Printers dialog box) and try printing again. If computer memory or disk space is low, you can increase available disk space by deleting unused files or by purchasing an additional disk drive. You increase available memory by reducing the number of applications you run at the same time or by purchasing additional memory. You can sometimes reduce the amount of printer memory required to print your documents by selecting the Optimize for Portability option in the PostScript tab dialog.

If you suspect one of the other problems, download the PostScript Error Handler with the document that is failing to print. For instructions on how to download the Error Handler, see the description of "Job Control Tab Dialog Settings" on page 29.

If you cannot correct the problem, contact your printer dealer or printer manufacturer for help.

You cannot print to a network printer

Problem: You try to print a document to a network printer but the document fails to print. A number of problems can cause this failure:

- Your network is failing; nobody can print.
- Your Windows network setup is incorrect.
- Your print job has been redirected to a printer connected to an AppleTalk network but the printer driver is not set up to work with AppleTalk.

Solution: Contact your network administrator for help solving the first two problems.

For the second problem, if you are connected to a Novell network, you might have a problem with how the printer was connected to the port. In a Novell environment, you must first capture an LPT n port. (For details on capturing ports, see the Novell network documentation.) Next, edit the ports section of the WIN.INI file to include the name of the port you captured with a DOS extension, such as LPT n .DOS. Finally, connect the selected printer to the LPT n .DOS port (not the LPT n port itself) via the Connect option in the Printers dialog box of the Control Panel.

If you suspect the third problem, choose None as the Protocol Option in the PostScript tab dialog and try printing again.

Index

- Add Watermark dialog box 31
- Adobe Printer Driver
 - installation 5–6
 - list of features 1
 - memory requirements 2
 - README file 2
 - system requirements 2
 - tab dialogs 25-31
- Adobe Type Manager (ATM)
 - driver compatibility with 1
 - printing Type 1 fonts on non-PostScript printers 2
- alert messages 35
- archiving PostScript documents 19

- Binary communication 15**

- Changing**
 - communications port to which printer is attached 15
 - printer settings 16–19
- configuring, PostScript printer 8–9
- Connect dialog box 9
- Contents button on the Help window 16

- Dialog box**
 - Add Watermark 31
 - Edit Watermark 31
- dialog box
 - Connect 9
 - Font Downloader 22
 - Install PostScript Printer From PPD 7
- downloading
 - a PostScript file 15
 - PostScript header once per session 15
 - PostScript header with AUTOEXEC.BAT 15
 - Type 1 fonts 15, 22–24
- driver, printer. *See* Adobe Printer Driver

- Edit Watermark dialog box 33
- Encapsulated PostScript (EPS)
 - creating file 15
 - file 19

- Features tab dialog 25**
- font
 - disks 15
 - downloading 23
 - TrueType 15
- Font Downloader dialog box 24
- Fonts tab dialog 27

- Header, PostScript 15**
- help, online
 - Adobe Printer Driver 15
 - Port Monitor 33

- IBM Personal Pageprinter**
 - using driver with 15
- Install PostScript Printer from PPD dialog box 7
- installing
 - a new printer 7–8
 - Port Monitor 11–12
 - printer driver software 5–6

- Job Control tab dialog 29**

- Main Setup dialog**
 - displaying 17. *See also* Paper tab dialog
- Microsoft Windows, requirements for using with driver 2
- Network printer**
 - problems with 38
 - setting up port for 11
- online help
 - Adobe Printer Driver 15
 - Port Monitor 33
- Paper**
 - tab dialog 25
- performance, optimizing 15
- port
 - assigning to printer 8
 - changing 15
 - for Port Monitor 12
 - for printer 9–11
- Port Monitor 33–34
 - creating icons for multiple printers 12
 - installing 11–12
 - setting up for different parallel port 12
- PostScript
 - file 15
 - header 15
 - portable files 15
 - printing file to 19–22
- PostScript printer
 - configuring 8–9
 - driver. *See* Adobe Printer Driver
 - installing from a printer description 7–8
 - main Setup dialog. *See* Paper tab dialog
 - settings 25
 - changing 16–19
- PostScript tab dialog 28
- printer. *See* PostScript printer
- printing to a PostScript file 15, 19–22
- README file for the Adobe Printer Driver 2**
 - requirements, system 2
- Sending a PostScript file to a printer 15**
 - service bureau, creating PostScript files for 19
- Setting up
 - driver for IBM Personal Pageprinter 15
 - driver for fast printing 15
 - driver for printing to file 20
 - driver to create PostScript files for a remote printer 15
 - printer port 8
 - for network printer 10
 - serial 10
 - printer to accept binary data 15
- Setup program, Adobe Printer Driver 5–6
- soft fonts 15
- solving common problems 35
- substituting PostScript fonts for TrueType fonts 15
- system requirements 2
- Tab dialog 25–31**
 - Features 25
 - Fonts 27
 - Job Control 29
 - Paper 25
 - PostScript 28
 - Watermark 30
- troubleshooting
 - common problems 35
 - with Error Handler 15
- TrueType fonts 15
- Type 1 fonts 22
 - printing on non-PostScript printers 3
- type cartridges 15
- Watermark tab dialog 30**
- Windows. *See* Microsoft Windows

Using the AdobePS 3.0.1 driver with an HP DesignJet 2500CP printer

This chapter provides HP DesignJet driver specific information for the Windows 3.1 and 3.11 environments. The information complements the information in the driver's help system. Together they should help you make effective use of the features in the various tab dialog boxes that you can find in the driver.

Running the Printer Driver setup program

Before installing the HP DesignJet 2500CP PostScript Driver make a backup copy of the driver disk for safekeeping.

To install the driver:

- 1 Start Windows.
- 2 Make sure the Control Panel window in the Windows Program Manager is closed.
- 3 Close all applications that you have open.
- 4 Insert the HP DesignJet 2500CP PostScript Driver for Microsoft Windows 3.1 program disk into your floppy disk drive.
- 5 From the Windows' Program Manager, choose **File/Run**.
- 6 In the Command Line box, type **a:\setup**, and click **OK**. Change the designation of the drive containing the program disk (**b:**, for example), if necessary. The driver setup window appears as setup is initialized.
- 7 Click **Continue** to continue the installation process.

The installation begins. A status window displaying the progress of the copy appears. The setup program first tries to install the driver files in the `WINDOWS\SYSTEM` directory.

If the setup program is unable to copy the files to the `WINDOWS\SYSTEM` directory because that directory is write protected, it displays a message about copying to your Windows directory. To copy the files to your Windows directory, click **Continue**. To cancel the copy, click **Exit**.

Once the copy has successfully completed, the setup program displays a message instructing you to restart Windows.

- 8 Click **Restart Windows**. The setup program will automatically restart Windows.

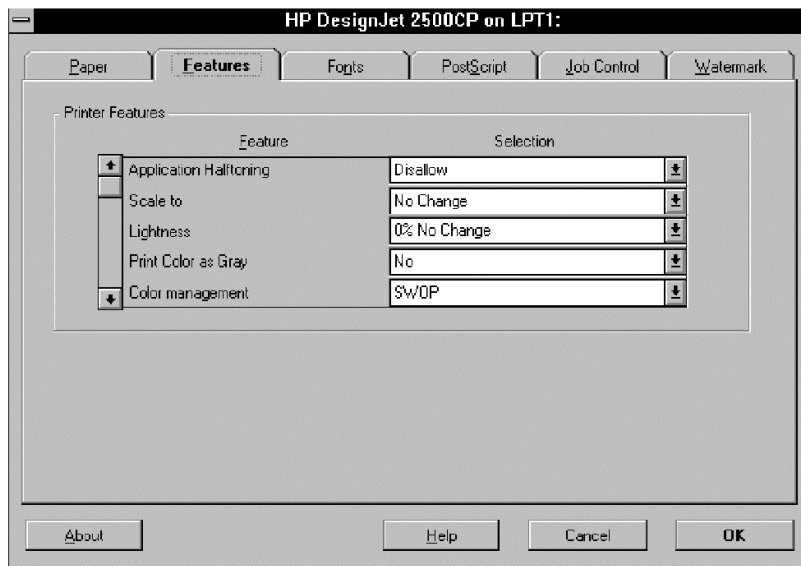
The installation of the HP DesignJet 2500CP PostScript Driver is complete.

To set up the driver:

The driver's dialog boxes can be accessed by using the Windows Program Manager's "Control Panel" and then double clicking on the **Printers** icon. From the Printers dialog box select your printer from the list and then click on the **Setup** button. You will see a dialog box with the name of your printer in the title bar. From here you can access all of the driver's features in their respective dialog boxes by clicking its tab.

The following sections describe the driver features.

FEATURES TAB DIALOG SETTINGS



The APPLICATION HALFTONING feature.

If you enable "Allow application halftoning" when printing from an application, like PhotoShop, QuarkXpress or PageMaker, it allows the application to use its own halftoning algorithms instead of the ones in the printer. The benefits of printer color calibration are ineffective while 'Allow application halftoning' is enabled.

The SCALE TO feature.

Scaling can be done using two different means: from the driver and from the printer's front panel.

Scaling from the driver:

The 'Scale to:' feature contains a list of standard page sizes, custom page sizes are not available. The Scale to: setting should be set to the final page size that you want the printer to use. The driver scales the printable area of the 'Page size' selected in your application so that it fits the printable area of the selected final page size.

Scaling from the printer's front panel:

Whenever the Scale to setting is "No change" (even if language is set to "Automatic") scaling from the printer's front panel is enabled and the page size is taken from the front panel. Note that when scaling from the front panel, if the printer's PS scale setting is set to 'Fit to page' and the Page Format setting is set to 'Inked area' or 'Software', the cut length of roll media will be 1.5 times the roll width.

The LIGHTNESS feature.

The "Lightness" feature allows you to decrease/increase the intensity of your print. If your printed image looks too dark/light and fine detail is being lost you could adjust this setting accordingly and print the image again.

The PRINT COLOR AS GRAY feature.

To print a monochrome copy of your drawing you should, for best results, set your application to send grayscales, ensure that this setting is disabled and set the printer's front panel to 'Color'. Use this setting only when your application does not allow you to send grayscales, the printer will substitute shades of gray for the colors in your drawing but the image quality will be unpredictable.

The COLOR MANAGEMENT feature

This is a very important feature which can help you to get the printed colors you want.

If your application is set to generate colors emulating a color standard which is: SWOP, EuroScale or Toyo, you should select the same color standard here. This will enable accurate conversion of colors from that standard to color values which your HP DesignJet 2500CP uses to create each of the colors.

The ColorSmart Vivid Business graphics setting is very useful when you are printing graphics for business presentations. This setting will provide you with high-quality printed output using clear, vibrant colors.

The “No Color Adjustment - Expert user” option should only be used if you are an experienced user of color management systems. It will allow you to make the most of the color gamut offered by the inks which your printer uses.

If you select “No Color Adjustment - Expert user” and the color values you send to the printer are inappropriate, the printer may use an excessive ink volume (more than 200% ink density) which will saturate some types of media and could, in extreme cases, result in serious printhead damage.

Printing PANTONE® colors

Printing the Pantone colors in your drawing using your HP DesignJet 2500CP is a very simple matter if you follow these guidelines:

- Use a Pantone certified software application to create your drawing.
- Select the Pantone colors from the palletes supplied by that application.
- Configure your application to output colors using one of the following ink standards: SWOP, EuroScale or Toyo.
- In the “Color Management” setting of the dialog box described above, select the same ink standard as you have selected in your application.

Using this method your application will output color values according to an ink standard which you HP DesignJet 2500CP knows how to emulate and the printed colors will be close approximations to the colors chosen in the original drawing.

PANTONE® is PANTONE, Inc.’s check-standard trademark for color and is a registered trademark of PANTONE, Inc.

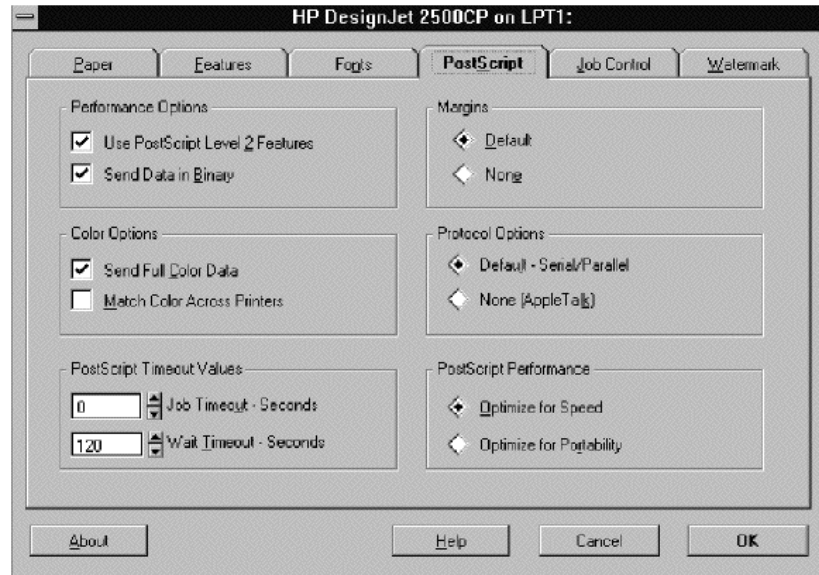
The MIRROR PRINT feature

With this setting set to “True”, your image will be printed as if reflected. This setting overrides the printer’s front panel mirroring setting.

The PRINT QUALITY feature

Choose from: Best - 600 dpi, Normal or Fast. Each of the settings have their different uses. Generally speaking the higher the print quality the longer the printer will need to process your drawing. Alternatively, when you have expensive media loaded in the printer, you will probably always use the higher print quality levels.

POSTSCRIPT TAB DIALOG SETTINGS



The PROTOCOL OPTIONS feature

!!IMPORTANT!!

Selecting the correct type of connection:

- Select “Default - Serial/Parallel” where your printer is directly connected, or via a non-Appletalk network, to your computer.
- Select “None (Appletalk)” where your printer is connected to your computer via an Appletalk network.

If the above setting is incorrectly set, your printer may be unable to perform the print request, and may exhibit one of a variety of indications depending on other settings you have selected.

The PERFORMANCE OPTIONS feature

To maximize data transfer speed, always use “Send Data in Binary” in the “Performance Options” box. Remember to select the correct “Protocol Option”:

- for parallel and non-Appletalk network connections, select “Default - Serial/Parallel”, (the driver will use the *tagged binary communications protocol*).

- for an Appletalk network printer, select “None (Appletalk)”, (the driver will use a *network binary protocol*).

Selecting the wrong option will result in errors:

- if sending a file through either a parallel or a non-Appletalk network port with ‘None (Appletalk)’ selected, a page reporting an error will be printed.
- if sending a file over an Appletalk network with “Default - Serial/Parallel” selected, the printer appears to receive data, but never prints.

Using the AdobePS 4.1 driver with an HP DesignJet 2500CP printer

This chapter provides HP DesignJet driver specific information for the Windows 95 environment. The information complements the information contained in the driver's help system and should help you make effective use of the features in the various tab dialog boxes that you can find in the driver.

Running the Printer Driver setup program

Before installing the HP PostScript Printer Driver make a backup copy of the *HP DesignJet 2500CP PostScript Driver for Microsoft Windows 95* disks, for safe-keeping.

To install the driver:

Step 1. With the *HP DesignJet 2500CP PostScript Driver for Microsoft Windows 95 - Disk 1/3* inserted in your floppy drive and with Windows 95 running, click on **Start** then **Settings** then **Printers** to open the Printers dialog box.

Step 2. Double-click on the **Add Printer** icon to open the "Add Printer Wizard".

Step 3. Follow the steps displayed on your screen. Below is a series of questions which, depending on your system configuration, you may be requested to answer.

*** Printer Managed by:**

Select:

Local Printer - if the printer is connected to your computer by a cable running directly between them.

Network printer- if the printer is not connected to your computer by a cable running directly between them.

*** Do you print from MS-DOS-based programs?**

We recommend that you select No, select Yes only in the case where you have an MS-DOS driver which can print to a HP DesignJet series printer.

*** Would you like to print a test page?**

We recommend that you select **Yes**. By printing a test page you will test the communications link between your system and the printer.

Step 4. At the end of the installation procedure you will be returned to the Windows' 95 "Add Printer Wizard" dialog box.

Setting up:

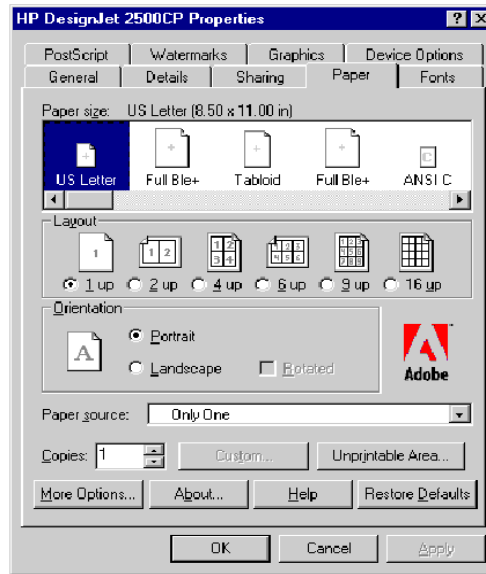
To set up the driver you will need to access its property pages. To do this:

Step 1. Click on **Start** and select **Settings** and then **Printers**.

Step 2. In the Printers window click on the HP DesignJet 2500CP printer icon with the right mouse button, and select **Properties** from the pop-up menu.

Step 3. You will see a dialog box with the name of your printer in the title bar and a range of tabs for the different property pages you can use to set up the driver. To open a particular property page, just click on its tab.

PAPER PROPERTIES PAGE SETTINGS



Using the CUSTOM PAPER feature.

The driver allows you to store three different Custom Page sizes. The limits for a Custom Page size for a HP DesignJet are:

- Minimum width and height: 2 inches (50.8 mm)
- Maximum width: 36.69 inches (932 mm)
- Maximum height: 129 inches (3.276 meters).

(The maximum height value is set by a limitation of the Windows operating system. See 'The SCALING feature' later.)

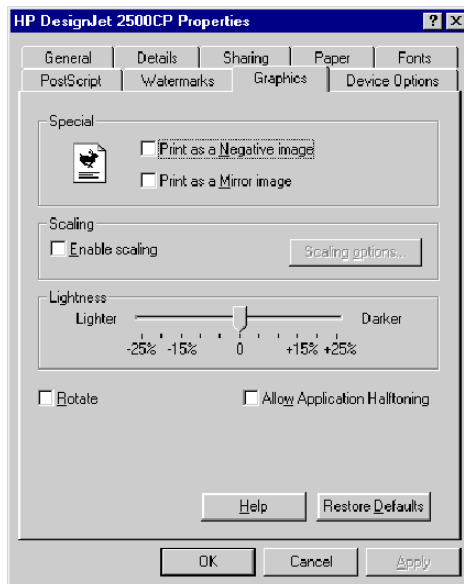
Using the ROTATED feature.

The "Orientation" setting tells the driver whether the drawing is landscape or portrait, but it does not change the orientation of the physical page. The page will always be printed by the printer with the short edge coming out of the printer first unless you are using the "Rotate" feature, see the Graphics properties page for more details.

Using the UNPRINTABLE AREA feature

You are strongly advised not to change this setting, since it represents the physical margins for the printer which are fixed by the mechanical constraints of the device.

GRAPHICS PROPERTIES PAGE SETTINGS



The SCALING feature.

Scaling can be done using two different means: from the driver and from the printer's front panel.

Scaling from the driver:

When using the driver to perform scaling you have the choice of two methods: scale by a factor you enter, or scale to a standard, or custom, page size.

- The scale factor (range from 25% to 419%) will be used to scale the dimensions of the imageable area that your application passes to the driver. So a scale factor of 200% will give you a final imageable area four times that which you have set in your application. If the scaling factor you enter is inappropriate for the media you have loaded in the printer your drawing may be clipped.
- When you scale to either a standard or custom page size the driver will maximize the size of the inkable area to fit within the final page size while ensuring that your drawing is not clipped. The maximum height that can be set using the custom page size is 1200 inches (30.48 meters)

Scaling from the printer's front panel:

Whenever the Scale to setting is “No change” (even if language is set to “Automatic”) scaling from the printer's front panel is enabled and the page size is taken from the front panel. Note that when scaling from the front panel, if the printer's PS scale setting is set to ‘Fit to page’ and the Page Format setting is set to ‘Inked area’ or ‘Software’, the cut length of roll media will be 1.5 times the roll width.

Using the ALLOW APPLICATION HALFTONING feature

If you enable “Allow application halftoning” when printing from an application, like PhotoShop, QuarkXpress or PageMaker, it allows the application to use its own halftoning algorithms. The benefits of printer color calibration are ineffective while ‘Allow application halftoning’ is enabled.

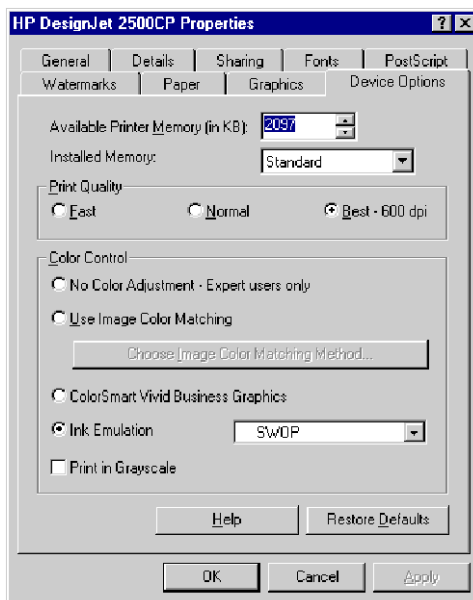
The LIGHTNESS feature

The “Lightness” feature allows you to decrease/increase the intensity of your print. If your printed image looks too dark/light and fine detail is being lost you could adjust this setting accordingly and print the image again.

Using the ROTATE feature.

Use this setting to rotate your portrait drawing and have the long edge coming out of the printer first (in order to save paper when using roll media). Alternatively, you can use the printer's front panel “Rotate” feature (Page Format > Rotate).

DEVICE OPTIONS PROPERTIES PAGE SETTINGS



The INSTALLED MEMORY feature

The Device Options properties dialog box lets you install additional printer memory and adjust the size of memory available to your printer. If you install additional printer memory, you must use the “Installed Memory” feature to enter the amount of memory you have added.

The amount of memory available to your printer can affect printing performance. If you have trouble printing and receive messages that the printer is short of memory, you might need to lower the “Available Printer Memory” value.

The PRINT QUALITY feature

Choose from: Best - 600 dpi, Normal or Fast. Each of the setting have their different uses. Generally speaking, the higher the print quality the longer the printer will need to process your drawing. Alternatively, when you have expensive media loaded in the printer, you will probably always use the higher print quality levels.

The NO COLOR ADJUSTMENT feature

The “No Color Adjustment - Expert user” option should only be used if you are an experienced user of color management systems. It will allow you to make the most of the color gamut offered by the inks which your printer uses.

If you select “No Color Adjustment - Expert user” and the color values you send to the printer are inappropriate, the printer may use an excessive ink volume (more than 200% ink density) which will saturate some types of media and could, in extreme cases, result in serious printhead damage.

The USE IMAGE COLOR MATCHING feature

This feature allows you to choose one of three color matching methods:

- Download Image Color Matching
- Printer Image Color Matching
- Host Image Color Matching

All the settings are described in the dialog box, however there is one option which requires a more complete explanation.

The “Host Image Color Matching” option should only be used if your application generates RGB color values for the colors in your drawing.

If your application generates CMYK color values and you select this option, the printer may use an excessive ink volume (more than 200% ink density) which will saturate some types of media and could, in extreme cases, result in serious printhead damage.

The COLORSMART VIVID BUSINESS GRAPHICS feature

A very useful setting when you are printing your business graphics for presentations. This setting will provide you with high-quality printed output using clear, vibrant colors.

The INK EMULATION feature

This is a very important feature which can help you to get the printed colors you want.

If your application is set to generate colors emulating a color standard which is: SWOP, EuroScale or Toyo, you should select the same color standard here. This will enable accurate conversion of colors from that standard to color values which your HP DesignJet 2500CP uses to create each of the colors.

Printing PANTONE® colors

Printing the Pantone colors in your drawing using your HP DesignJet 2500CP is a very simple matter if you follow these guidelines:

- Use a Pantone certified software application to create your drawing.

- Select the Pantone colors from the palletes supplied by that application.
- Configure your application to output colors using one of the following ink standards: SWOP, EuroScale or Toyo.
- In the “Ink Emulation” setting of the dialog box described above, select the same ink standard as you have selected in your application.

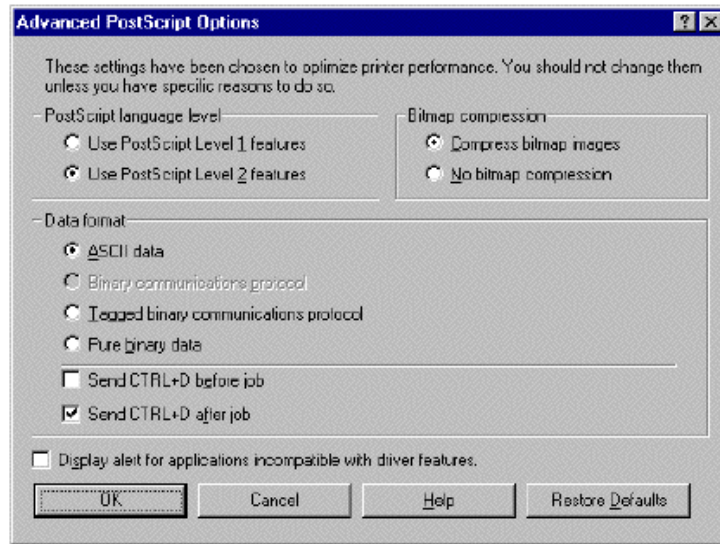
Using this method your application will output color values according to an ink standard which you HP DesignJet 2500CP knows how to emulate and the printed colors will be close approximations to the colors chosen in the original drawing.

PANTONE[®] is PANTONE, Inc.’s check-standard trademark for color and is a registered trademark of PANTONE, Inc.

The PRINT IN GRAYSCALE feature

To print a monochrome copy of your drawing you should, for best results, set your application to send grayscales, ensure that this setting is disabled and set the printer’s front panel to ‘Color’. Use this setting only when your application does not allow you to send grayscales, the printer will substitute shades of gray for the colors in your drawing but the image quality will be unpredictable.

POSTSCRIPT PROPERTIES PAGE SETTINGS



Using the ADVANCED POSTSCRIPT feature

!!IMPORTANT!!

To improve data transfer times you could select one of the binary options detailed below (default setting is ASCII mode*).

- Select “Tagged Binary Communications Protocol” where your printer is either connected directly, or through a non-Appletalk network, to your computer**.
- Select “Pure Binary Data” where your printer is connected to your computer via an Appletalk network.

Selecting the wrong option will result in errors:

- if sending a file through a parallel or non-Appletalk port with “Pure Binary Data” selected, a page reporting an error will be printed.
- if sending a file over an Appletalk network with “Tagged Binary Communications Protocol” selected, the printer appears to receive data, but never prints.

* As a general rule you should enable the “Send CTRL + D after job” setting where your printer is either connected directly or via a non-Appletalk network. Do NOT enable the “Send CTRL+D before job” setting.

**As a general rule you should NOT enable the “Send CTRL + D after the job” setting. Do NOT enable the “Send CTRL+D before job” setting.

INK LEVEL PROPERTIES PAGE

The features of the Ink Level properties page are only available with certain configurations, a definition of the configuration requirements is given below.

- Your printer should be an HP DesignJet 2500CP,
- Your printer should be using a network connection,
- You should have installed JetAdmin v2.4, or later, on your computer,
- You should be printing to one of the following:
 - a Novell queue, like '\\NetwareServer'\NetwareQueue', configured in Bindery mode,
 - '\\HP_Network_Printers'\PrinterName', if the printer is *not* configured to service a Novell NDS Queue,
 - a HP JetDirect port.

The INK LEVEL BY PEN feature

This feature shows a graphical representation and percentage estimation of the printer's ink levels, pen by pen, from when the information was last requested. This can help you avoid wasting time and media if you can see that one or more of your pens is low or out of ink.

The REFRESH INFORMATION feature

The pen ink level and media information in this properties page represents the printer status the last time the information was requested. More up-to-date information will be displayed when you press the **Refresh information** button.

The CHECK STATUS BEFORE PRINTING feature

With this feature enabled the driver will automatically report 'out of ink' and 'out of media' conditions before it sends a print to be printed. If the driver detects either condition you will have the opportunity to cancel the print request.

Win NT 3.51 HP DesignJet 2500CP driver information

To complement the Microsoft PostScript driver you received with your version of Windows NT 3.51, Hewlett-Packard have provided a set of PPD (PostScript Printer Description) files matched to the capabilities of your HP DesignJet printer. By installing these PPD files on your system you will, depending on your application, be able to make use of the PostScript capabilities of your printer, (during installation you will need your Windows NT 3.51 disks).

Product name:

HP DesignJet 2500CP PPD for Microsoft Windows NT

Version number:

v1.0

Language(s) supported:

English, French, Italian, German, Spanish.

Products supported:

HP DesignJet 2500CP

Platform requirements:

MS Windows NT v3.51

Installing:

- Step 1.** With the “HP DesignJet 2500CP PPD for Microsoft Windows NT” inserted in your floppy drive and with Microsoft Windows NT 3.51 running, open the “Control Panel” and double-click on **Print Manager**.
- Step 2.** Click on **Create Printer** and scroll down the list to select **Other**.
- Step 3.** Enter the path to the directory where the file is stored (A:\WINNT351), and click on **OK**.
- Step 4.** Select the appropriate printer name for the device you are installing, and click on **OK**.
- Step 5.** Next you will be requested to enter the path to the Windows NT distribution files, answer this question as appropriate for your system, and choose continue.

You should now be able to select and print to your HP DesignJet 2500CP printer as with any other printer in a Win NT 3.51 environment.

Win NT 4.0 HP DesignJet 2500CP driver information

To complement the Microsoft PScript driver you received when with your version of Windows NT 4.0 Hewlett-Packard have provided a set of PPD (PostScript Printer Description) files matched to the capabilities of your HP DesignJet printer. By installing these PPD files on your system you will be able to make full use of the PostScript capabilities of your printer, (during installation you will need your Windows NT 4.0 CD).

Product name:

HP DesignJet 2500CP PPD for Microsoft Windows NT

Version number:

v1.0

Language(s) supported:

English, French, Italian, German, Spanish.

Products supported:

HP DesignJet 2500CP

Platform requirements:

MS Windows NT v4.0

Installing:

Step 1. With the "HP DesignJet 2500CP PPD for Microsoft Windows NT" disk inserted in your floppy drive and with Windows NT 4.0 running, click on **Printers** to open the Printers dialog box.

Step 2. Double-click on the **Add Printer** icon to open the Add Printer Wizard

Step 3. Follow the steps displayed on your screen. Below is a series of questions which, depending on your system configuration, you may be requested to answer.

* **"Printer Managed by:"**

Select:

My Computer - if the printer is connected to your computer by a cable running directly between them.

Network printer server - if the printer is not connected to your computer by a cable running directly between them.

* **"Click the manufacturer and model of your printer. If your printer came with an installation disk, click Have Disk. If your etc..."**

When you see this message you can choose to do one of two things, read each of the two options and see which one fits your situation the best.

a) You have recently installed a Windows NT Service Pack, in which

case you can find your HP DesignJet printer in the "HP" list. Click on your printer's name and on **Next**. Skip to the next question.

b) The PPD file on the "HP DesignJet 2500CP PPD for Microsoft Windows NT" disk is the version you want to install on your system. In this case, click on **Have Disk...** and in the "Install From Disk" dialog box, enter **A:\WINNT40** and click on **OK**. This time in the Wizard dialog box select your HP DesignJet printer from the list and click on **Next**.

* **"Would you like to print a test page?"**

We recommend that you select **Yes**. By printing a test page you will test the communications link between your system and the printer.

Step 4. When requested, insert the Windows NT Workstation disk and answer any questions you see.

Setting up:

To set up the driver you will need to access its property pages. To do this:

Step 1. Click on **Start** and select **Settings** and then **Printers**.

Step 2. In the Printers window click on your HP DesignJet printer icon with the right mouse button, and select **Properties** from the pop-up menu.

Step 3. You will see a dialog box with the name of your printer in the title bar and a range of tabs for the different property pages you can use to set up the driver. To open a particular property page, just click on its tab.

The following sections describe the features that are included in the HP DesignJet 2500CP PPD file.

ADVANCED/PRINTER FEATURES TAB DIALOG SETTINGS

The APPLICATION HALFTONING feature.

If you enable "Allow application halftoning" when printing from an application, like PhotoShop, QuarkXpress or PageMaker, it allows the application to use its own halftoning algorithms instead of the ones in the printer. The benefits of printer color calibration are ineffective while 'Allow application halftoning' is enabled.

The SCALE TO feature.

Scaling can be done using two different means: from the driver and from the printer's front panel.

Scaling from the driver:

The 'Scale to:' feature contains a list of standard page sizes, custom page sizes are not available. The Scale to: setting should be set to the final page size that you want the printer to use. The driver scales the printable area of the 'Page size' selected in your application so that it fits the printable area of the selected final page size.

Scaling from the printer's front panel:

Whenever the Scale to setting is "No change" (even if language is set to "Automatic") scaling from the printer's front panel is enabled and the page size is taken from the front panel. Note that when scaling from the front panel, if the printer's PS scale setting is set to 'Fit to page' and the Page Format setting is set to 'Inked area' or 'Software', the cut length of roll media will be 1.5 times the roll width.

The LIGHTNESS feature.

The "Lightness" feature allows you to decrease/increase the intensity of your print. If your printed image looks too dark/light and fine detail is being lost you could adjust this setting accordingly and print the image again.

The PRINT COLOR AS GRAY feature.

To print a monochrome copy of your drawing you should, for best results, set your application to send grayscales, ensure that this setting is disabled and set the printer's front panel to 'Color'. Use this setting only when your application does not allow you to send grayscales, the printer will substitute shades of gray for the colors in your drawing but the image quality will be unpredictable.

The COLOR MANAGEMENT feature

This is a very important feature which can help you to get the printed colors you want.

If your application is set to generate colors emulating a color standard which is: SWOP, EuroScale or Toyo, you should select the same color standard here. This will enable accurate conversion of colors from that standard to color values which your HP DesignJet 2500CP uses to create each of the colors.

The ColorSmart Vivid Business graphics setting is very useful when you are printing graphics for business presentations. This setting will provide you with high-quality printed output using clear, vibrant colors.

The “No Color Adjustment - Expert user” option should only be used if you are an experienced user of color management systems. It will allow you to make the most of the color gamut offered by the inks which your printer uses.

If you select “No Color Adjustment - Expert user” and the color values you send to the printer are inappropriate, the printer may use an excessive ink volume (more than 200% ink density) which will saturate some types of media and could, in extreme cases, result in serious printhead damage.

Printing PANTONE® colors

Printing the Pantone colors in your drawing using your HP DesignJet 2500CP is a very simple matter if you follow these guidelines:

- Use a Pantone certified software application to create your drawing.
- Select the Pantone colors from the palletes supplied by that application.
- Configure your application to output colors using one of the following ink standards: SWOP, EuroScale or Toyo.
- In the “Color Management” setting of the dialog box described above, select the same ink standard as you have selected in your application.

Using this method your application will output color values according to an ink standard which you HP DesignJet 2500CP knows how to emulate and the printed colors will be close approximations to the colors chosen in the original drawing.

PANTONE® is PANTONE, Inc.’s check-standard trademark for color and is a registered trademark of PANTONE, Inc.

The MIRROR PRINT feature

With this setting set to “True”, your image will be printed as if reflected. This setting overrides the printer’s front panel mirroring setting.

The PRINT QUALITY feature

Choose from: Best - 600 dpi, Normal or Fast. Each of the settings have their different uses. Generally speaking the higher the print quality the longer the printer will need to process your drawing. Alternatively, when you have expensive media loaded in the printer, you will probably always use the higher print quality levels.

Notice

The information contained in this document is subject to change without notice and should not be construed as a commitment by the Hewlett-Packard Company. The software described in this document is for exclusive use with HP printers and plotters.

Hewlett-Packard assumes no responsibility for any errors that may appear in this document nor does it make expressed or implied warranty of any kind with regard to this material, including but not limited to, the implied warranties of merchantability and fitness for a particular purpose.

The Hewlett-Packard Company shall not be liable for incidental or consequential damages in connection with, or arising out of the furnishing, performance, or use of this document and the program material which it describes.

Limited Warranty

SOFTWARE: HP warrants for a period of NINETY (90) DAYS from the date of purchase that the software product will execute its programming instructions when properly installed on the personal computer or workstation indicated on this package. HP does not warrant that the operation of the software will be uninterrupted or error free. In the event that this software package fails to execute its programming instructions during the warranty period, customer's remedy shall be to return the disk(s) ("media") to HP for replacement. Should HP be unable to replace the media within a reasonable amount of time, customer's alternate remedy shall be a refund of the purchase price upon return of the product and all copies.

MEDIA: HP warrants the media upon which this product is recorded to be free from defects in materials and workmanship under normal use for a period of NINETY (90) DAYS from the date of purchase. In the event any media prove to be defective during the warranty period, Customer's remedy shall be to return the media to HP for replacement. Should HP be unable to replace the media within a reasonable amount of time, customer's alternate remedy shall be a refund of the purchase price upon return of the product and all copies.

NOTICE OF WARRANTY CLAIMS: Customer must notify HP in writing of any claim not later than thirty (30) days after the expiration of the warranty period.

LIMITATION OF WARRANTY CLAIMS: HP makes no other express warranty, whether written or oral with respect to this product. Any implied warranty of merchantability or fitness is limited to the 90-day duration of this written warranty. Some states or provinces do not allow limitations on how long an implied warranty lasts, so the above limitation or exclusion may not apply to you*.

This warranty gives specific legal rights, and you may also have other rights which vary from state to state, or province to province.

EXCLUSIVE REMEDIES: The remedies provided above are the customer's sole and exclusive remedies. In no event shall HP be liable for any direct, indirect, special, incidental, or consequential damages (including lost profit) whether based on warranty, contract, tort, or any other legal theory. Some states or provinces do not allow the exclusion or limitation of incidental or consequential damages, so the above limitation or exclusion may not apply to you. **WARRANTY SERVICE:** Warranty service may be obtained from the nearest HP sales office or other location indicated in the owner's manual or service booklet.

* **UK only:** if you are a "consumer" as defined by statutes, parts of this statement may not apply to you.

© Copyright Hewlett-Packard Company 1997

Manual Part Number: C4704-90081
Edition 1, April 1997.
English.
Printed in Europe.



C4704-90081

This manual has been printed on chlorine-free bleached paper.

Hewlett-Packard Company
Barcelona Division
Avda. Graells, 501
08190 Sant Cugat del Valles
Barcelona, Spain