



---

**Pantone Color Tables**  
**for the HP DesignJet 2500CP**

---

**User's Guide**



© Copyright  
Hewlett-Packard Company  
1997.

All rights are reserved. No part of the document may be photocopied, reproduced, or translated to another language without the prior written consent of Hewlett-Packard Company.

Microsoft® is a U.S. registered trademark of Microsoft Corp.  
Windows® is a U.S. registered trademark of Microsoft Corp.

PANTONE is Pantone, Inc.'s check-standard trademark for color.  
© Pantone, Inc., 1988.

PANTONE® Colors generated by the HP DesignJet 2500CP are four-color process simulations and may not match PANTONE-identified solid color standards. Use current PANTONE Color Reference Manuals for accurate color.

PANTONE Color simulations are only obtainable on this product when driven by qualified Pantone-licensed software packages. Contact Pantone, Inc. for a current list of qualified licensees.

Apple® and Macintosh® are registered trademarks of Apple Computer, Inc.

Adobe™  
PostScript™  
Adobe PageMaker™  
Adobe Photoshop™  
Adobe Illustrator™  
are trademarks of Adobe Systems Incorporated which may be registered in certain jurisdictions.

QuarkXPress is a trademark of Quark, Inc.

CorelDRAW is a trademark of Corel Corporation.



# Contents

## **1. Introduction 1**

What Can I Find Inside? 1

Common Questions Answered 2

## **2. Installation 5**

Introduction 5

Installation from CD-ROM 5

Macintosh Installation from Diskette 5

Windows Installation from Diskette 6

## **3. PANTONE Simulation Palettes 7**

PANTONE Color Palettes and your Application 7

Adobe Illustrator 5.x for Macintosh 8

Adobe Illustrator 4.x for Windows 9

Adobe PageMaker 5.x & 6.x (Macintosh and Windows) 10

Adobe Photoshop 3.x (Macintosh and Windows) 12

CorelDRAW 5.x (Windows 3.1 & 3.11 Only) 13

CorelDRAW 6.x (Windows 95 only) 14

Freehand 4.x & 5.x (Macintosh and Windows) 15

QuarkXPress 3.3x (Macintosh and Windows) 17

## **4. PANTONE Simulations Utility (Windows Only) 19**

Show Color Tables 19

Print Color Charts 20

## **5. PANTONE Color Tables (Macintosh Only) 21**

## **6. PANTONE Simulated Color Charts (Macintosh Only) 23**



# 1. Introduction

## What Can I Find Inside?

### For Macintosh Users

- PANTONE color palettes for the following applications:

Adobe PageMaker™  
Adobe Photoshop™  
Adobe Illustrator™  
Freehand  
QuarkXPress™

- PANTONE simulated color charts for the PostScript driver.
- PANTONE CMYK tables with color values.

### For Windows Users

- PANTONE color palettes for the following applications:

Adobe PageMaker  
Adobe Photoshop  
Adobe Illustrator  
CorelDRAW™  
Freehand  
QuarkXPress

- PANTONE CMYK tables with color values.

## Common Questions Answered

*Under what conditions is the PANTONE licensing valid?*

PANTONE is licensed only under the following conditions:

- using the HP PostScript solution
- printing on either HP Heavy-Weight Coated or HP High-Gloss Photo paper
- using scatter halftoning
- using the “Best” print quality setting
- using SWOP ink emulation
- using the Hewlett-Packard DesignJet 2500CP imaging ink system.

PANTONE colors printed out by your HP DesignJet 2500CP are four-color process simulations. Only by mixing PANTONE inks together can you get true PANTONE color. Software applications that support PANTONE will generate specific color values (CMYK = Cyan, Magenta, Yellow and Black, or RGB = Red, Green and Blue) to simulate each PANTONE color that is sent to the Windows and Macintosh drivers. However, the color values they use are often based on an ink standard such as SWOP or EuroScale, which have characteristics which differ from the ink in your HP DesignJet cartridges. If the color values sent by your application match the values in the HP PANTONE Process Color Simulation Lookup Table, the specified PANTONE color will be simulated by the printer.

*When should I use the “Pantone Process Color and Color Separation Tables for the HP DesignJet 2500CP”?*

You should use them if you do not use a third-party color management software (CMS) package.

*When do you recommend me to buy a third-party Color Management package?*

If the HP DesignJet 2500CP is the only device being used for final printed output, then this Pantone Process Color and Color Separation Tables provides a solution for all the main graphic arts applications and no extra software is required. However if you use a different device for your final printing and you want color consistency across devices, color calibration for your scanner and monitors then a third party CMS is recommended.



*Why do I get different colors when I print my file using an offset printer compared to when I print to an HP DesignJet 2500CP?*

The HP DesignJet 2500CP inks (Cyan, Magenta, Yellow & Black) are different from the standard offset inks. Typically, the offset printers use SWOP, EuroScale, or Toyo inks and the main applications specify colors in SWOP, EuroScale, or Toyo CMYK. Therefore, you will get the best color matching in this case by setting ink emulation to SWOP, EuroScale, or Toyo on your printer's front panel or in your printer driver.

*How can I ensure that my printed colors are repeatable?*

There are some environmental variables to which you should pay attention if you want to repeat prints and have color consistency. You should:

- use pen cartridges with the same lot number
- use media with the same lot number
- maintain temperature and humidity constant.

*What problems might I encounter using PANTONE colors?*

Software applications that are licensees of PANTONE may not have elected to use or integrate the PANTONE Color Lookup Table for your printer. These applications may send values that are different to the ones in the "HP PANTONE Process Color Simulation Lookup Tables" (see Chapters 4 to 6) for your HP DesignJet. If the application sends different values, your printer will not print a correct simulation of your chosen PANTONE color.

If the HP PANTONE values are not supported in your software and your application is not listed on page 1, we recommend that you contact your software vendor and request that they support the HP DesignJet 2500CP. Additionally, you can refer to the color tables included with the PANTONE Process Color Simulations disk and either enter the color values into the color palette in your application, or create a custom palette containing your own selection of colors which you frequently use (See below for further information).

*How do I make sure I get the color I want from the printer?*

If a palette has been supplied for your application, you should read the appropriate sections specific to your application that you will find later in this document. See page 1 for a list of applications.

If a palette has not been supplied for your application, you will have to enter the color values manually into your application in order to get the color you want from the printer. This is what you should do:

- 1 Set ink emulation to SWOP in the printer driver.
- 2 Start your application and access its “Edit Color Palette” or similar function.
- 3 Change the component color values for the PANTONE color in your application to match those of the color values in the color table or color chart (see Chapters 4 to 6). These tables and charts list the respective color component values which are used by the HP DesignJet 2500CP to simulate PANTONE colors. We recommend that you enter the values from this table into your application’s palette before you print your drawings.

**IMPORTANT – all values in the color tables range from 0 to 100%**

Some applications use the range 0 to 255. To derive values for these applications you must multiply the values given in the color tables by 2.55.

For example: PANTONE Blue 072 CH = 100, 90, 05

Multiplying each number by 2.55, we get: 255, 230, 13

Similarly, if your application uses a range of 0 to 64,353 for its color values you should use a multiplying factor of 643.53.

- 4 Be sure to save the color values that you changed in your application, in case you want to use them again in the future.

*What if my on-screen colors are not what I expected?*

Color representations on-screen are not always a valid way of judging the appearance of the printed output. If you have ensured that the color values (CMYK or RGB) for the designated PANTONE color are correct in your application the printed output will be an accurate PANTONE simulation.

## 2. Installation

### Introduction

You may have received the HP Pantone Color Tables on the “HP DesignJet 2500CP” CD-ROM, or separately on the “Pantone Process Color for the HP DesignJet 2500CP” diskette.

The installation procedures are described below. For information on how to use the PANTONE tables after installation, see Chapter 3.

### Installation from CD-ROM

If you received the CD-ROM, you can choose to install the Pantone Color Tables from the CD-ROM installation program. The installation is performed automatically; you need only confirm or change the default directory into which the files are copied.

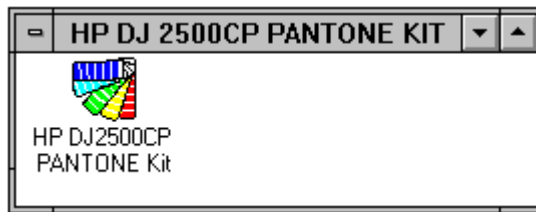
### Macintosh Installation from Diskette

- 1 Insert the diskette into your Macintosh and open it.
- 2 Double-click the **HP DesignJet Installer** icon, answer the on-screen questions until you see the installation selection dialog box.
- 3 You can make only one selection per installation operation: you can either “Install everything” or make a specific selection from the list. To install only a selection of the files you will have to repeat the installation for each table or profile you want to install. When you have made your choice, click on the **Install** button.
- 4 You will be prompted to enter a folder name where the files should be stored; the **HP DesignJet 2500CP Pantone kit** folder on your hard disk is the default. When the box contains the name to be used, click on **Install**.
- 5 Follow the on-screen instructions until you are told that the “Installation was successful”.
- 6 At this point you can choose **Continue** to install other tables or profiles, or **Quit** if there are no more tables or profiles you want to install.
- 7 If you choose **Quit**, you will see that the **HP DesignJet 2500CP Pantone kit** folder is open and contains folders for each of the items you chose in step 3.

## Windows Installation from Diskette

Your computer should be running Windows version 3.1, 3.11, or 95, or Windows NT.

- 1 Insert the diskette into your A or B drive.
- 2 Activate the Program Manager window.
- 3 Click on the **File** menu and select **Run...**
- 4 Type **A:\SETUP** and press Enter.  
(Type **B:\SETUP** if you have inserted the diskette into the B drive.)
- 5 You will see a dialog box that asks you to enter the name of a directory where the install program should place the “Pantone Process Color Tables” files. The default directory is C:\HPANTONE. To accept this directory, click on **OK**. Otherwise type the path and name of the directory you want to use.
- 6 Once you have entered a directory name and clicked on **Continue** the setup program will transfer several files to your chosen directory.
- 7 The end of this setup sequence is a message window that tells you that the installation is complete. Click on **OK**.
- 8 You will see a Windows group window like the one below.



- 9 If you want to use the HP PANTONE Process Color Simulations (and print out the PANTONE Process Color Simulation chart), double-click on the icon and see Chapter 4 for details. Otherwise close the window in the normal way.

### 3. PANTONE Simulation Palettes

#### PANTONE Color Palettes and your Application

Before your software application can use the PANTONE Four Color Process Simulation palettes you must first have installed them on your system (installation is described in Chapter 2).

<b>Application type</b>	<b>With the HP DesignJet 2500CP and this type of medium</b>	<b>Select palette with filename<sup>2</sup></b>
Windows applications <sup>1</sup>	HP Heavy-Weight Coated	2500CPCO
	HP High-Gloss Photo	2500CPGL
Macintosh applications <sup>1</sup>	HP Heavy-Weight Coated	HP2500CP_HeavyCoated
	HP High-Gloss Photo	HP2500CP_HighGloss

#### Notes

- 1 If your software application is not listed on page 1, you will have to enter values manually from the color tables into your application. See the notes on your application later in this chapter.
- 2 Filename extensions will be added to these names as required for a particular application.

## Adobe Illustrator 5.x for Macintosh

PANTONE palettes have been provided for Adobe Illustrator 5.x; they were copied by the installation program and placed on your hard disk. If you used the suggested location, they will be in a folder named **Illustrator** in the **HP DesignJet 2500CP Pantone kit** folder. The following procedure assumes that you have already opened your drawing using Illustrator.

### To Select and Load an HP PANTONE Palette File

- 1 Click on the **File** menu and select **Import styles**.
- 2 Use the file system navigator to go to the **HP DesignJet 2500CP Pantone kit** folder and open the **Illustrator** folder.
- 3 You will see two entries. Double-click on the appropriate HP PANTONE palette in the list. See the table at the beginning of this chapter for more information.
- 4 Select the **Show Paint Style** item from the **Window** menu. The **Paint Style** floating window will appear.
- 5 Click on the solid color button. The named color list will then appear in a scrolling window.
- 6 Scroll down until you see the PANTONE colors with a “CHC” suffix. This suffix is used to distinguish them from the default PANTONE colors in Illustrator, which have a “CV” suffix.

You may now apply these colors to your document in the same way as the other colors in the list.

## Adobe Illustrator 4.x for Windows

As Adobe Illustrator 4.x does not support loadable palettes, except as part of your document. We have created Illustrator native files for your use; they were copied to your hard disk by the installation program. If you used the suggested location, they will be in the **C:\HPANTONE\ILLUSTR** directory. The following procedure assumes that you have already opened your drawing using Illustrator.

### To Select and Load an HP PANTONE Palette File

- 1 Click on the **File** menu item and click on **Open**.
- 2 Use the file system navigator to go to the **C:\HPANTONE\ILLUSTR** directory.
- 3 You will see two entries, double-click on the appropriate HP PANTONE palette in the list, see the table at the beginning of this chapter for more information.
- 4 From the **Paint** menu item, select **Custom Color**. You will see that the list now contains the HP PANTONE colors from the palette file you selected.

These are now available for use in your drawing in the same way as the other colors in the list.

## Adobe PageMaker 5.x & 6.x (Macintosh and Windows)

Palettes have been provided for Adobe PageMaker 5.x; they were copied by the installation program and placed on your hard disk. If you used the suggested location, they will be in **C:\HPANTONE\PAGEMAKR** in Windows or a folder named **PageMaker** in the **HP DesignJet 2500CP Pantone kit** folder on your Macintosh's hard disk. You should move these files to the directory that PageMaker uses to store color palettes:

- The PageMaker 5.x default directory for color palettes is **C:\PAGEMAKR\CUSTOM** in Windows or the **System folder/Aldus/Color** folder on the Macintosh.
- The PageMaker 6.x default directory for color palettes is **C:\PAGEMAKR\RSRC\COLOR** in Windows or the **Adobe PageMaker 6/RSRC/Color** folder on the Macintosh.

You can move these files using the normal methods provided by your operating system. The following procedures assume that you have already moved the files and you have opened your drawing using PageMaker.

### Macintosh – To Select and Load an HP PANTONE Palette

- 1 Select the **Define Colors** item in the **Utilities** menu.
- 2 In the **Define Colors** dialog box click on the **New...** button.
- 3 In the **Edit Color** dialog box click on and hold the **Libraries** arrow.
- 4 Select the appropriate HP PANTONE palette in the list. See the table at the beginning of this chapter for more information. You may need to scroll down the list to see this entry.
- 5 The **Library** dialog box for your PANTONE Colors palette will appear. Holding the Shift key down, click on each of the PANTONE colors you want to work with in your document. You may need to scroll along the list to see all the entries.
- 6 Click on the **OK** button.
- 7 In the **Edit Color** dialog box set **Type** to **Process** and **Model** to **CMYK**. Click on **OK**.
- 8 The **Define Colors** dialog box will re-appear with the new colors added. Click on **OK**.

The colors are available for use in your drawing, in the same way as the other colors in the **Colors** dialog box list.



## Windows – To Select and Load an HP PANTONE Palette

- 1 Select the **Define Colors** item in the **Utilities** menu.
- 2 In the **Define Colors** dialog box, click the **New...** button.
- 3 In the **Edit Color** dialog box, click on the **Libraries** arrow.
- 4 Double-click on the appropriate HP PANTONE palette in the list. See the table at the beginning of this chapter for more information. You may need to scroll down the list to see this entry.
- 5 The **Library** dialog box for your PANTONE Colors palette will appear. Holding the Shift key down, click on each of the PANTONE colors you want to work with in your document. You may need to scroll along the list to see all the entries.
- 6 Click on the **OK** button.
- 7 In the **Edit Color** dialog box, set **Type** to **Process** and **Model** to **CMYK**. Click on **OK**.
- 8 The **Define Colors** dialog box will re-appear, click on **OK**.

The colors are available for use in your drawing, in the same way as the other colors in the **Colors** dialog box list.

## Adobe Photoshop 3.x (Macintosh and Windows)

Palettes have been provided for Adobe Photoshop 3.x; they were copied by the installation program and placed on your hard disk. If you used the suggested location, they will be in **C:\HPANTONE\PHOTOSH** in Windows, and a folder named **Photoshop** in the **HP DesignJet 2500CP Pantone kit** folder on your Macintosh's hard disk. The following procedures assume that you have already opened your drawing using Photoshop.

*IMPORTANT: For best results, you should ensure that Photoshop is in "CMYK color" mode before you add any PANTONE colors to your image.*

### Macintosh – To Select and Load an HP PANTONE Palette

- 1 Select the **Window** menu, then **Palettes**, then **Show Swatches**.
- 2 In the window that opens, select the arrow head and select **Load Swatches**.
- 3 Use the file system navigator to go to the **HP DesignJet 2500CP Pantone kit** folder and open the **Photoshop** folder.
- 4 Select the appropriate HP PANTONE palette in the list. See the table at the beginning of this chapter for more information. Then click on **Open**.

The colors will now be displayed in the **Swatches** window and are available for use in your drawing in the normal way.

### Windows – To Select and Load an HP PANTONE Palette

- 1 Select the **Window** menu, then **Palettes**, then **Show Swatches**.
- 2 In the window that opens, select the arrow head and select **Load Swatches**.
- 3 Use the file system navigator to go to the **C:\HPANTONE\PHOTOSH** directory.
- 4 Select the appropriate HP PANTONE palette in the list. See the table at the beginning of this chapter for more information. Then click on **Open**.

The colors will now be displayed in the **Swatches** window and are available for use in your drawing in the normal way.

### To Use the EPS Files

In addition to the palette files, charts of the PANTONE colors have been supplied in a set of EPS files, each of which can be opened in Photoshop in the normal way. The colors in these files can be copied into your drawings by using the eyedropper tool.

The advantage of using the EPS files is that each color is labeled with its PANTONE name.

When opening the EPS files, you must set **Mode** to **CMYK Color** in order to get the correct colors.

## **CorelDRAW 5.x (Windows 3.1 & 3.11 Only)**

Palettes have been provided for CorelDRAW 5.x; they were copied by the installation program and placed on your hard disk. If you used the suggested location, they will be in **C:\HPANTONE\COREL**. For convenience, we recommend that you move these files to the directory that Corel uses to store color palettes. The Corel 5.x default directory for color palettes is **C:\COREL50\CUSTOM**. You can move these files using the Windows File Manager. The following procedure assumes that you have already moved the files and that you have opened your drawing using CorelDRAW.

### **To Select and Load an HP PANTONE Palette**

- 1** Select an object in your drawing.
- 2** From the **Outline** or **Fill** tool flyout menu, click on the color wheel (Fill Color) icon. This will open the **Uniform Fill** dialog box.
- 3** Click on the **Custom Palettes** button, then choose **Open**.
- 4** From the **List Files of Type** box, select **Custom palette (\*.cpl)**, then click on the appropriate HP PANTONE palette in the list. See the table at the beginning of this chapter for more information. You may need to scroll down the list to see this entry.
- 5** Choose **OK**.

The colors will now be available in the **Custom Palettes** section of the **Uniform Fill** dialog box.

## CorelDRAW 6.x (Windows 95 only)

Palettes have been provided for CorelDRAW 6.x; they were copied by the installation program and placed on your hard disk. If you used the suggested location, they will be in **C:\HPANTONE\COREL**. For convenience, we recommend that you move these files to the folder which Corel uses to store color palettes. The CorelDRAW 6.x default location for color palettes is **C:\COREL\PROGRAMS\DATA**. You can move these files using the Windows 95 Explorer or My Computer. The following procedure assumes that you have already moved the files and that you have opened your drawing using CorelDRAW.

### To Select and Load an HP PANTONE Palette

- 1 Select an object in your drawing.
- 2 From the **Outline** or **Fill** tool flyout menu, click on the color wheel (**Fill Color**) icon. This will open the **Uniform Fill** dialog box.
- 3 Click on the **Palette Options** pop-up menu, then choose **Open Palette**.
- 4 From the **List Files of Type** box, select **Process palette (\*.pal)**, then click on the appropriate HP PANTONE palette in the list. See the table at the beginning of this chapter for more information. You may need to scroll down the list to see this entry.
- 5 Choose **OK**.

The colors will now be available in the **Custom Palettes** section of the **Uniform Fill** dialog box.

## Freehand 4.x & 5.x (Macintosh and Windows)

Palettes have been provided for Freehand; they were copied by the installation program and placed on your hard disk. If you used the suggested location, they will be in **C:\HPANTONE\FREEHAND** in Windows, or a folder named **Freehand** in the **HP DesignJet 2500CP Pantone kit** folder on your Macintosh's hard disk. For convenience, we recommend that you move these files to the directory that FreeHand uses to store color palettes:

- The FreeHand 4.x default location for color palettes in Windows is **C:\FH4\FH4LIB**, and on a Macintosh **System Folder/Aldus/Color**.
- The FreeHand 5.x default location for color palettes in Windows is **C:\FH5\usenglish\colors**, and on a Macintosh **Freehand Aldus/Color**.

You can move these files using the normal methods provided by your operating system. The following procedures assume that you have already moved the files and you have opened your drawing using FreeHand.

### Macintosh – To Select and Load an HP PANTONE Palette

- 1 Select the **Window** menu and then **Color List**. The **Color list** dialog box will appear.
- 2 Select **Options** in the **Color list** dialog box, and then select the appropriate HP PANTONE palette in the list. See the table at the beginning of this chapter for more information. You may need to scroll down the list to see this entry.
- 3 The **Library** dialog box for your PANTONE palette will appear. Select the PANTONE color you want to use from the list. To select multiple colors, hold down the Shift key while you select. You may need to scroll along the list to see all the entries.
- 4 Click on **OK**.

The colors will now be listed in the **Color list** dialog box, and are available for use in your drawing in the same way as the other colors in the list.

## **Windows – To Select and Load an HP PANTONE Palette**

**1** Freehand 4.x: select the **View** menu, then **Tools** and then **Color List**.

Freehand 5.x: select the **Window** menu and then **Color List**.

The **Color list** dialog box will open.

**2** Do one of the following:

- Select **Options** and then double-click on the appropriate HP PANTONE palette in the list.
- Click on **Import** and go to the directory where you can find the Freehand color palettes.

See the table at the beginning of this chapter for more information.

**3** Select the color you want to use from the list. To select multiple colors, hold down the Shift key.

**4** Click on **OK**.

The colors you selected will now be listed in the **Color list** dialog box, and are available for use in your drawing in the same way as the other colors in the list.

## QuarkXPress 3.3x (Macintosh and Windows)

As QuarkXPress does not support loadable palettes except as part of your document, we have created QuarkXPress 3.3x native files for your use. The following procedures assume that you have already opened your drawing using QuarkXPress.

*NOTE: The PANTONE names in our PANTONE palettes, calibrated for the HP DesignJet HP 2500CP, have a space character in front of PANTONE. Do not re-name this color without the space character. If you do, Quark will re-map its default CMYK color values into these PANTONE palettes.*

### Macintosh – To Select and Load an HP PANTONE Palette

- 1 Select the **Edit** menu and then **Colors...**
- 2 In the **Colors for ...** dialog box select **Append**.
- 3 Use the file system navigator to go to the **HP DesignJet 2500CP Pantone kit** folder, then open the **QuarkXPress** folder.
- 4 Select the appropriate HP PANTONE palette from the list (see the table on the next page). Then click on **Open**.

The new colors will now be listed in the **Colors for ...** dialog box, and are available for use in your drawing in the same way as the other colors in the list.

### Windows – To Select and Load an HP PANTONE Palette

- 1 Select the **Edit** menu and then **Colors...**
- 2 In the **Colors for ...** dialog box, select **Append**.
- 3 Use the file system navigator to open the **C:\HPANTONE\QXP** directory.
- 4 Click on the appropriate HP PANTONE palette in the list, see the table on the next page to find out which PANTONE pages are contained in each of the files, then select the file you want to use from the list.
- 5 Click on **OK**.

The colors will now be listed in the **Colors for ...** dialog box, and are available for use in your drawing in the same way as the other colors in the list.

### PANTONE Tables for QuarkXPress (Macintosh)

To find a specific PANTONE color, you will need to use the table below to find out which file contains that color:

PANTONE pages	Heavy-Weight Coated Paper	High-Gloss Photo Paper
1 – 11.5	HP2500CP_HeavCoat_1_11	HP2500CP_HighGloss_1_11
12 – 23	HP2500CP_HeavCoat_12_23	HP2500CP_HighGloss_12_23
24 – 30.5	HP2500CP_HeavCoat_24_30	HP2500CP_HighGloss_24_30
31 – 40	HP2500CP_HeavCoat_31_40	HP2500CP_HighGloss_31_40
41 – 52.3	HP2500CP_HeavCoat_41_52	HP2500CP_HighGloss_41_52
52.4 – 62.5	HP2500CP_HeavCoat_52_62	HP2500CP_HighGloss_52_62
63 – 71	HP2500CP_HeavCoat_63_71	HP2500CP_HighGloss_63_71
71.3 – 84	HP2500CP_HeavCoat_71_84	HP2500CP_HighGloss_71_84
85 – 92	HP2500CP_HeavCoat_85_92	HP2500CP_HighGloss_85_92

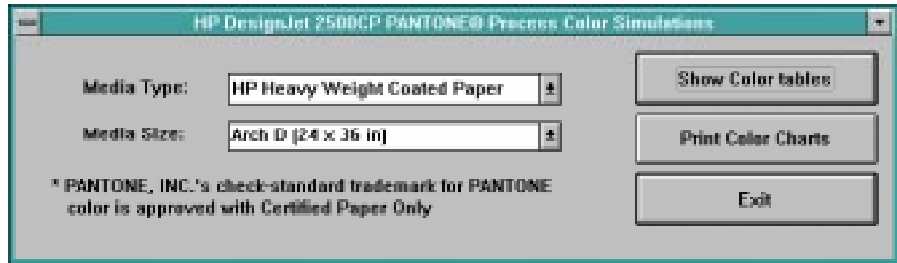
### PANTONE Tables for QuarkXPress (Windows)

To find a specific PANTONE color, you will need to use the table below to find out which file contains that color:

PANTONE pages	Heavy-Weight Coated Paper	High-Gloss Photo Paper
1 – 11.5	2500CPC1.QXD	2500CPG1.QXD
12 – 23	2500CPC2.QXD	2500CPG2.QXD
24 – 30.5	2500CPC3.QXD	2500CPG3.QXD
31 – 40	2500CPC4.QXD	2500CPG4.QXD
41 – 52.3	2500CPC5.QXD	2500CPG5.QXD
52.4 – 62.5	2500CPC6.QXD	2500CPG6.QXD
63 – 71	2500CPC7.QXD	2500CPG7.QXD
71.3 – 84	2500CPC8.QXD	2500CPG8.QXD
85 – 92	2500CPC9.QXD	2500CPG9.QXD



## 4. PANTONE Simulations Utility (Windows Only)



The PANTONE Process Color Simulations Utility main window has the following settings:

- **Media Type** – use this to select either of the PANTONE certified medias: Heavy-Weight Coated Paper and High-Gloss Photo Paper.
- **Media Size** – this is a pull-down list of media sizes to be used with the **Print Color Charts** button – see “Print Color Charts” below.

The three buttons in this window are described in the following sections.

### Show Color Tables

Clicking on this button opens the **HP PANTONE Process Color Tables** help window which lists the Postscript color tables available. They are:

- CMYK Color Tables using HP Heavy-Weight Coated paper.
- CMYK Color Tables using HP High-Gloss Photo paper.

**Note:** CMYK stands for “Cyan, Magenta, Yellow and black”.

These tables list the respective color component values which are used by your HP DesignJet 2500CP to simulate PANTONE process colors. The values in the tables are the same as those noted on the PANTONE Process Color Simulations Chart. If your application is not listed on page 1, and your application allows it, we recommend that you enter the values from this table into your application’s palette before you use your printer to print your drawings

If your application uses color values that are not in the range 0 – 100, you will need to re-scale the values shown in the table before entering them into your application. See Chapter 1 for an example.

## Print Color Charts

Clicking on the **Print Color Charts** button in the main window will open the **HP PANTONE Process Color Simulations** dialog box.

If you click on **OK** your printer will generate the PANTONE Process Color Simulations Chart consisting of two or four sheets of media. The **Media Size** setting on the main window is used to determine the size of the sheets.

Before clicking on **OK** make sure that:

- Your printer is in its “Ready to plot” state.
- The media size and type you have loaded into the printer correspond with those selected in **Media Size** and **Media Type** in the main window.
- If you are using sheet media, they are loaded in portrait orientation.

If you click on **Cancel** (default), the window will close and you will see the main window.

## Exit

Clicking on **Exit** will close the PANTONE Process Color Simulations Utility main window.

## 5. PANTONE Color Tables (Macintosh Only)

This section is for Macintosh users only. If you are a Windows user and you want to view or print the PANTONE Color Tables, refer to Chapter 4.

In the **HP DesignJet 2500CP Pantone Kit** folder on your hard disk, you will find a **Charts and Tables** folder, which contains two documents showing the CMYK component values for each of the PANTONE colors:

- HP2500CP\_HighGloss gives a scatter table for HP Heavy-Weight Coated Paper
- HP2500CP\_HeavyWeight gives a scatter table for HP High-Gloss Photo Paper

You can view these tables by double-clicking the appropriate icon. If you decide to print them please ensure you have a suitable device selected in the “Chooser” menu. (The HP DesignJet 2500CP can be used to print these tables but may not be your best choice.)



## 6. PANTONE Simulated Color Charts (Macintosh Only)

This section is for Macintosh users only. If you are a Windows user and you want to print the PANTONE Simulated Color Charts, refer to Chapter 4.

In the **HP DesignJet 2500CP Pantone Kit** folder on your hard disk, you will find a **Charts and Tables** folder, which contains two PANTONE Color Charts that can be printed on your HP DesignJet 2500CP:

- HP2500CP\_HighGloss.ps is a scatter chart for HP Heavy-Weight Coated Paper
- HP2500CP\_HeavyWeight.ps is a scatter chart for HP High-Gloss Photo Paper

Follow the instructions below to print either of these charts:

- 1** Double-click the file containing the chart. The HP LaserJet Utility will be automatically launched. If you have not used it before, it will ask you to select a target printer (select your HP DesignJet 2500CP).
- 2** When you see a message that asks if you want to see any response coming back from the printer, select **No**.
- 3** At the end of the file download sequence, select the **File** menu and then **Quit**.
- 4** Your PANTONE Color Chart will now be printed.



## Notice

The information contained in this document is subject to change without notice and should not be construed as a commitment by the Hewlett-Packard Company. The software described in this document is for exclusive use with HP printers and plotters.

**Hewlett-Packard assumes no responsibility for any errors that may appear in this document nor does it make expressed or implied warranty of any kind with regard to this material, including, but not limited to, the implied warranties of merchantability and fitness for a particular purpose.**

The Hewlett-Packard Company shall not be liable for incidental or consequential damages in connection with, or arising out of the furnishing, performance, or use of this document and the program material which it describes.

## Limited Warranty

**SOFTWARE:** HP warrants for a period of **NINETY (90) DAYS** from the date of purchase that the software product will execute its programming instructions when properly installed on the personal computer or workstation indicated on this package. HP does not warrant that the operation of the software will be uninterrupted or error free. In the event that this software package fails to execute its programming instructions during the warranty period, customer's remedy shall be to return the disk(s) ("media") to HP for replacement. Should HP be unable to replace the media within a reasonable amount of time, customer's alternate remedy shall be a refund of the purchase price upon return of the product and all copies.

**MEDIA:** HP warrants the media upon which this product is recorded to be free from defects in materials and workmanship under normal use for a period of **NINETY (90) DAYS** from the date of purchase. In the event any media prove to be defective during the warranty period, Customer's remedy shall be to return the media to HP for replacement. Should HP be unable to replace the media within a reasonable amount of time, customer's alternate remedy shall be a refund of the purchase price upon return of the product and all copies.

**NOTICE OF WARRANTY CLAIMS:** Customer must notify HP in writing of any claim not later than thirty (30) days after the expiration of the warranty period.

**LIMITATION OF WARRANTY CLAIMS:** HP makes no other express warranty, whether written or oral with respect to this product. Any implied warranty of merchantability or fitness is limited to the 90-day duration of this written warranty. Some states or provinces do not allow limitations on how long an implied warranty lasts, so the above limitation or exclusion may not apply to you\*.

This warranty gives specific legal rights, and you may also have other rights which vary from state to state, or province to province.

**EXCLUSIVE REMEDIES:** The remedies provided above are the customer's sole and exclusive remedies. In no event shall HP be liable for any direct, indirect, special, incidental, or consequential damages (including lost profit) whether based on warranty, contract, tort, or any other legal theory. Some states or provinces do not allow the exclusion or limitation of incidental or consequential damages, so the above limitation or exclusion may not apply to you.

**WARRANTY SERVICE:** Warranty service may be obtained from the nearest HP sales office or other location indicated in the owner's manual or service booklet.

\* **UK only:** if you are a "consumer" as defined by statutes, parts of this statement may not apply to you.

© Copyright Hewlett-Packard Company 1997

Part number: C6240-90023  
Edition 2, July 1997  
English  
Printed in Europe



C6240-90023

This manual has been printed on chlorine-free bleached paper

Hewlett-Packard Company  
Barcelona Division  
Avda. Graells, 501  
08190 Sant Cugat del Vallès, Spain