

# HP OfficeJet G85 Quick Setup Poster

## Macintosh



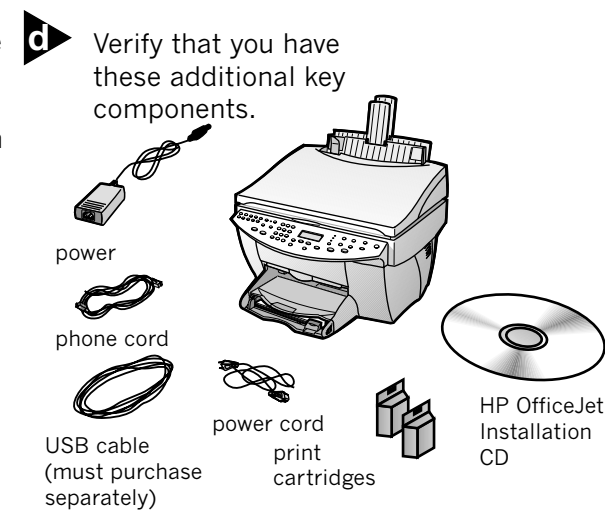
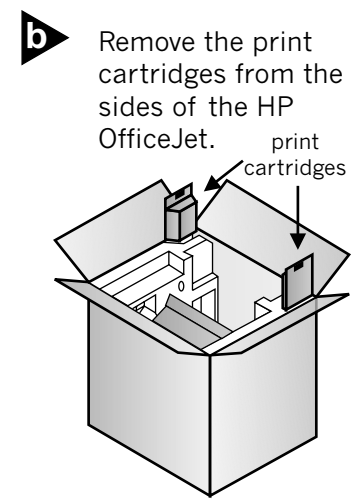
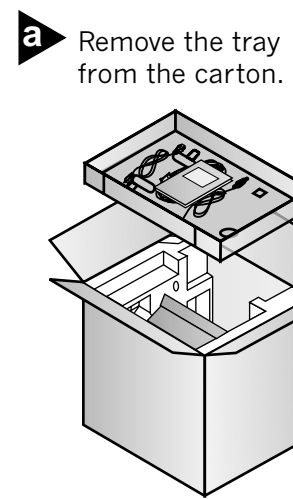
Side 1 of 2

1

### Unpack your HP OfficeJet

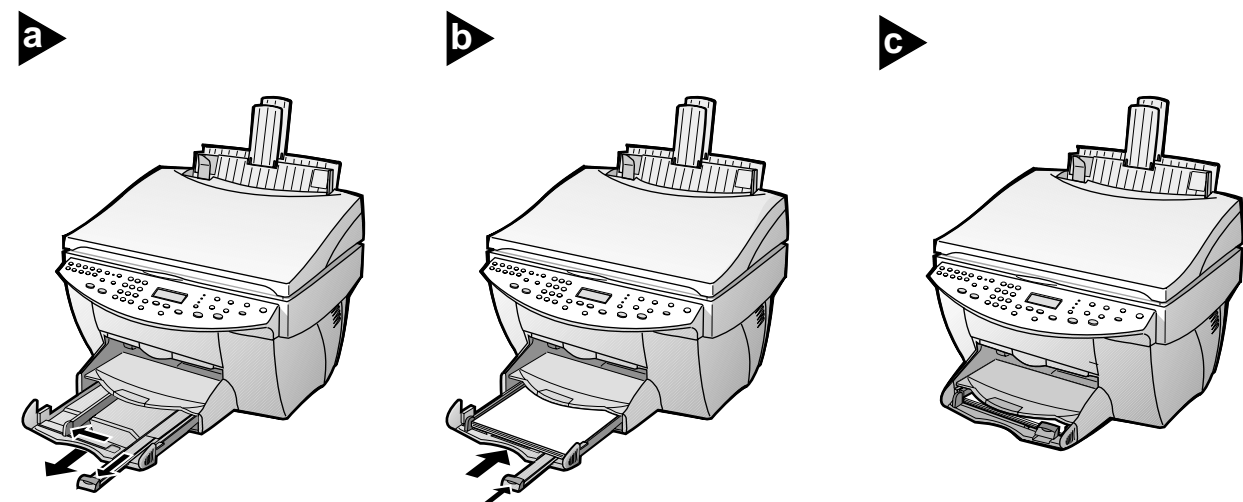
**Note:**  
The instructions for this poster **ONLY** apply to Macintosh operating systems.

A high-speed USB cable (12 Mbps) no longer than five meters must be purchased separately.



2

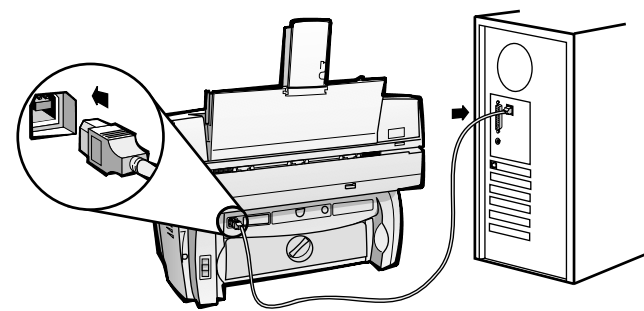
### Load paper



3

### Connect the cable

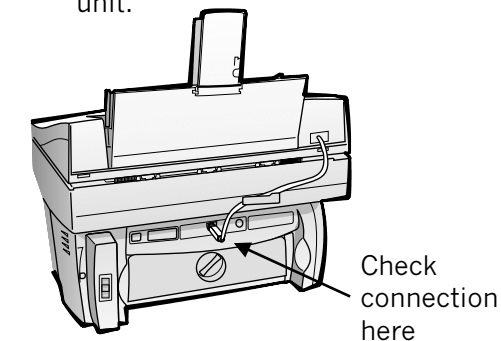
Connect the USB cable from your HP OfficeJet to your Macintosh.



4

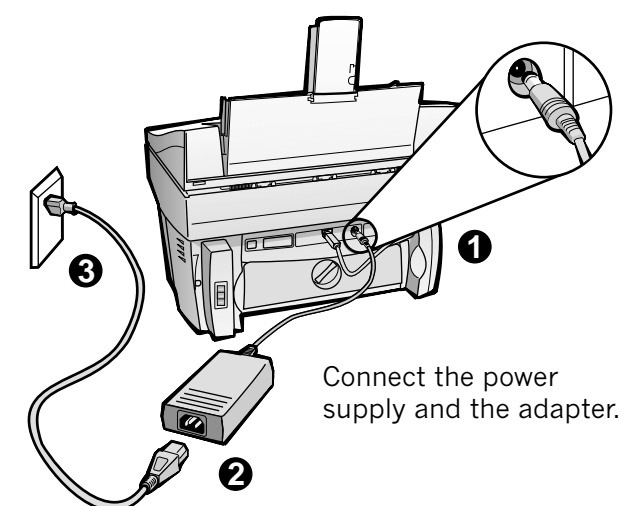
### Secure the cord

Make sure the Automatic Document Feeder cord is securely connected to the unit.



5

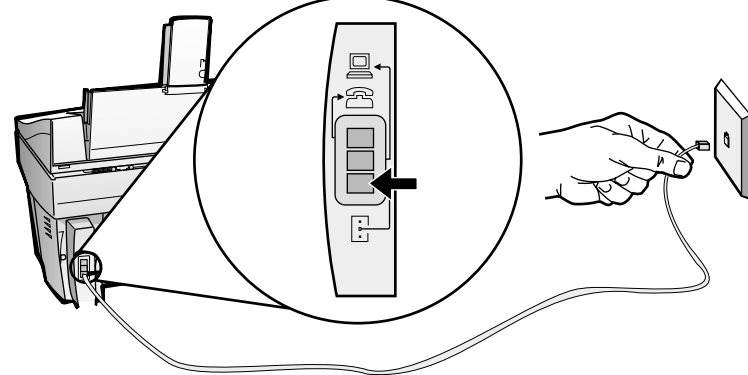
### Connect the power cord



6

### Connect the phone cord

Connect the phone/fax cord to the HP OfficeJet and then to the wall



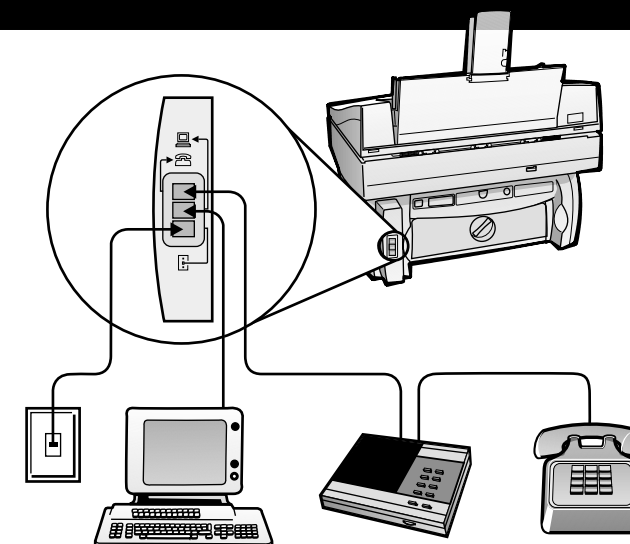
7

### Connect office equipment (optional)

This diagram shows a possible configuration for connecting additional office equipment.

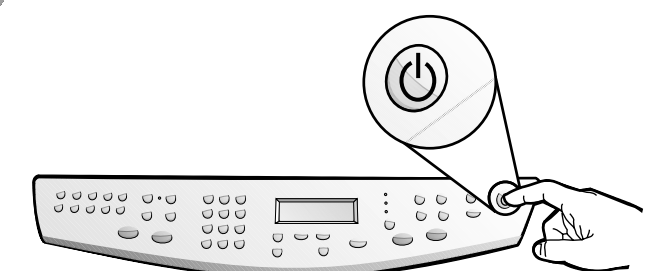
For each piece of office equipment you are connecting to the HP OfficeJet, remove a plastic tab from the phone/fax connector.

If you connect a modem, turn off its fax-receive feature. See your Onscreen Guide for information on tone versus pulse dialing and features such as distinctive ring or voice mail.



8

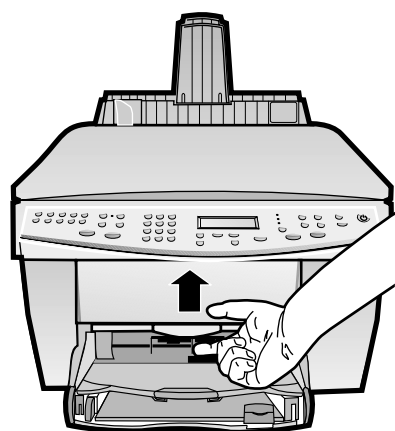
### Turn on your HP OfficeJet



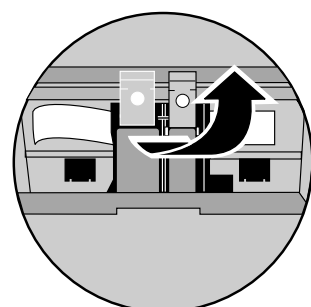
9

### Insert black print cartridge

**a** Open the door and raise it up until it clicks into place. The print-cartridge carriage will move to the middle of the access area.



**b** Raise both latches on the print carriage.

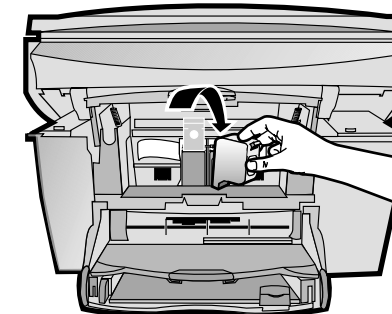


**c** Remove the black print cartridge (thinner one) from its packaging and, being careful to touch only the black plastic, gently remove both the green pull tab and the blue tape covering the nozzles.

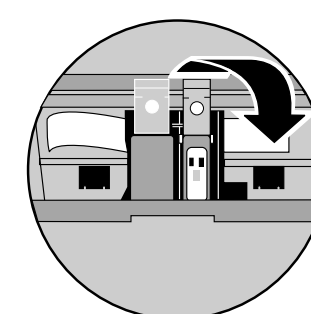
**CAUTION:**  
Do not touch or remove the gold-colored contacts.



**d** Push the black print cartridge firmly down into the slot on the right. As you insert the cartridge, make sure the label is facing you.



**e** Lower the right print-cartridge latch down onto the top of the cartridge, and push down until the latch locks firmly into place.



Turn over to continue.



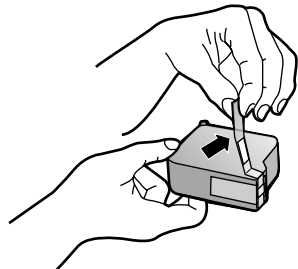
C6737-90121

<http://www.hp.com/go/all-in-one>

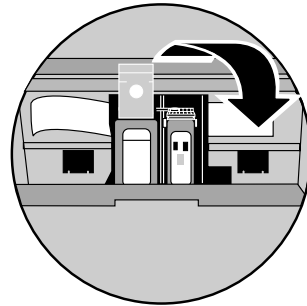
## 10 Insert color print cartridge

**a** Remove the color print cartridge (wider one) from its packaging and, being careful to touch only the black plastic, gently remove both the green pull tab and the blue tape covering the nozzles.

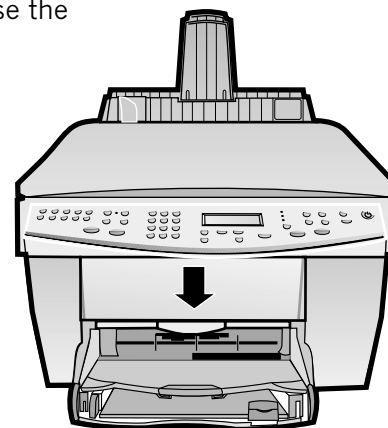
**CAUTION:**  
Do not touch  
or remove  
the gold-  
colored  
contacts.



**b** Push the color print cartridge firmly down the slot on the left. Lower the left print-cartridge latch down onto the top of the cartridge, and push down until the latch locks firmly into place.



**c** Pull the handle down to close the door.

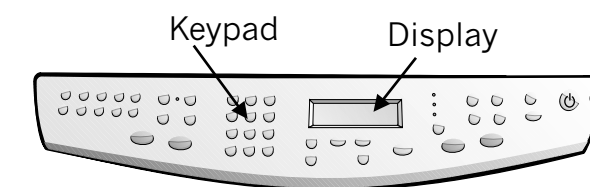


## 11 (Outside U.S. only) Select your country and language

**a** Look at the display on your HP OfficeJet for a country list. (U.S. users go to step 12.)

**b** If prompted on the display, enter the code for your language on the keypad, and then confirm your selection.

Enter the code for your country on the keypad, and then confirm your selection.

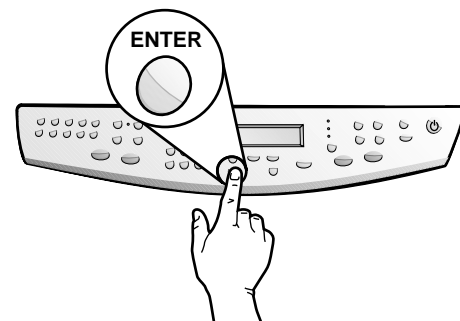


## 12 Print an alignment page

Make sure paper is loaded in your HP OfficeJet.

The message "Press **ENTER** to Align Cartridges" appears in the display. Press the **ENTER** key to enable the HP OfficeJet to perform the alignment. After a page prints, the alignment is complete.

Look at the alignment page for green check marks, and then recycle or discard the page.



## 13 Install the software

**a** Turn your computer and wait for your computer to finish rebooting. Insert the HP OfficeJet installation CD.



**b** The installer will automatically run after you insert the CD.  
  
If it does not, you should double-click the **HP All-In-One Installer** icon on your desktop.

**c** Select a language from the drop-down list and click **Install**.  
  
Click **Accept** to accept the Software License Agreement.

**d** Click **Install** to do an easy install.  
  
Then, click **Continue** to proceed with the installation.

**e** When prompted, restart your computer. The **Setup Assistant** will run after re-starting. Follow the instructions to complete the software installation.

**Note:**  
See the **Additional Setup Information in the Basic Guide** for details on how to set up a network installation.

## 14 Congratulations!

**Congratulations!**  
You can now print, copy, scan and fax  
with your new HP OfficeJet.