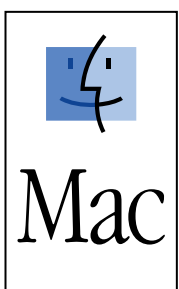




Q1679-90107



Supports Macintosh  
9.x and OS X



**Make sure you are using the correct side of this poster.**

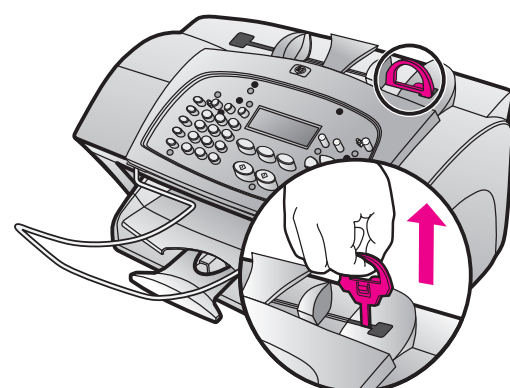
**Macintosh users: Follow the steps in order.**

**Windows users: See the other side of this poster.**

**See your box for exact contents and system requirements.**

**1**

Remove the red plastic tab

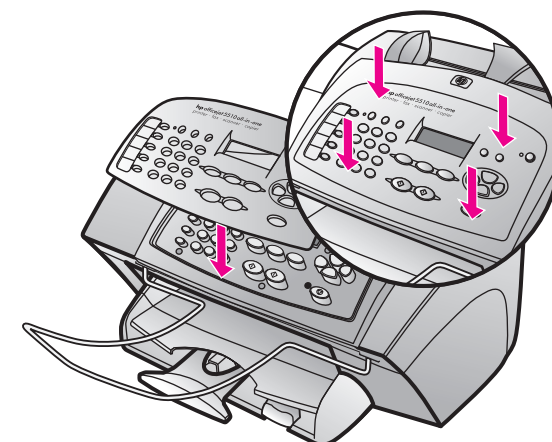


Remove and discard the red plastic tab.

**CAUTION:** You must complete this step **BEFORE** connecting the power cord.

**2**

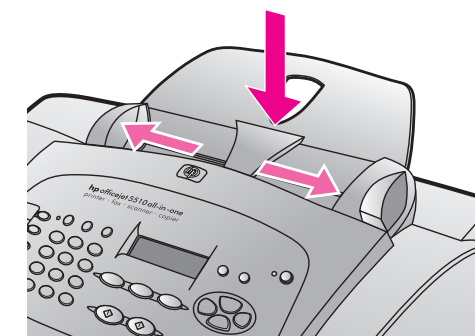
Attach the front-panel cover



Attach the front-panel cover. Make sure the cover is even with the unit and that all buttons are accessible and can move freely.

**3**

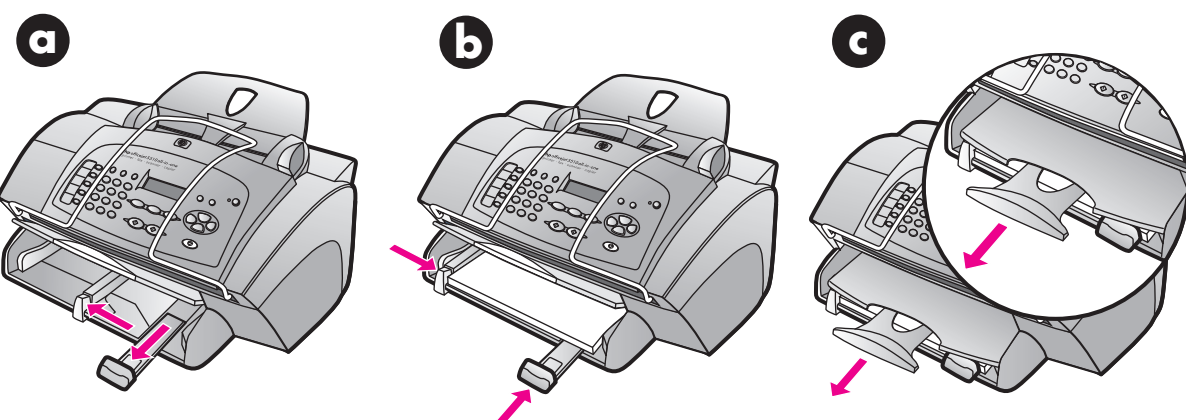
Attach the ADF tray extension



Attach the automatic document feeder (ADF) tray extension. Press down as shown to ensure it clicks into place. Slide out the paper-width guides.

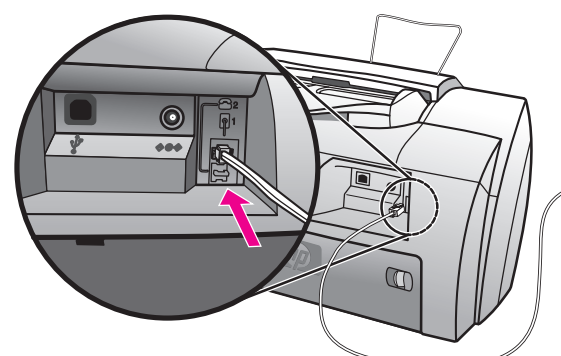
**4**

Load plain white paper



**5**

Connect the supplied phone cord

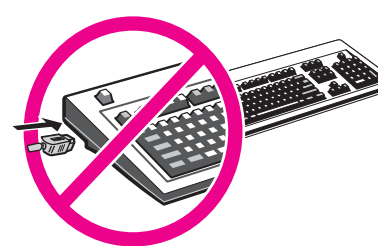
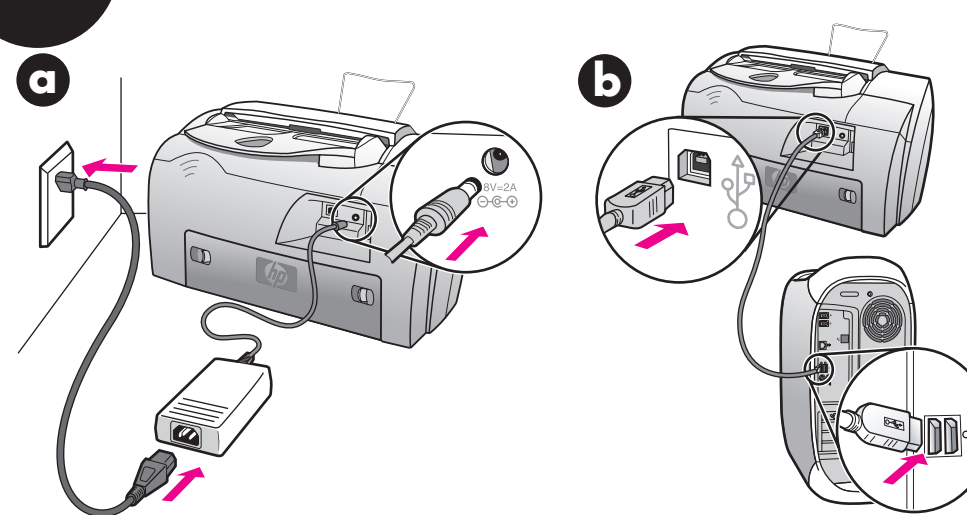


Connect the phone cord to connector 1 on the HP Officejet and then to a wall jack for your phone system.

If connecting a phone, modem, or answering machine, see the Reference Guide.

**6**

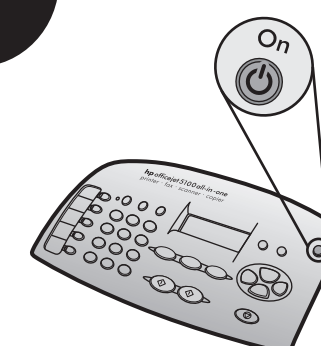
Connect the power cord and then the USB cable



**CAUTION:** Do not connect your HP Officejet to a USB port on a keyboard or to a non-powered USB hub.

**7**

Turn on your HP Officejet



The HP Officejet automatically ejects a blank piece of paper.

**8**

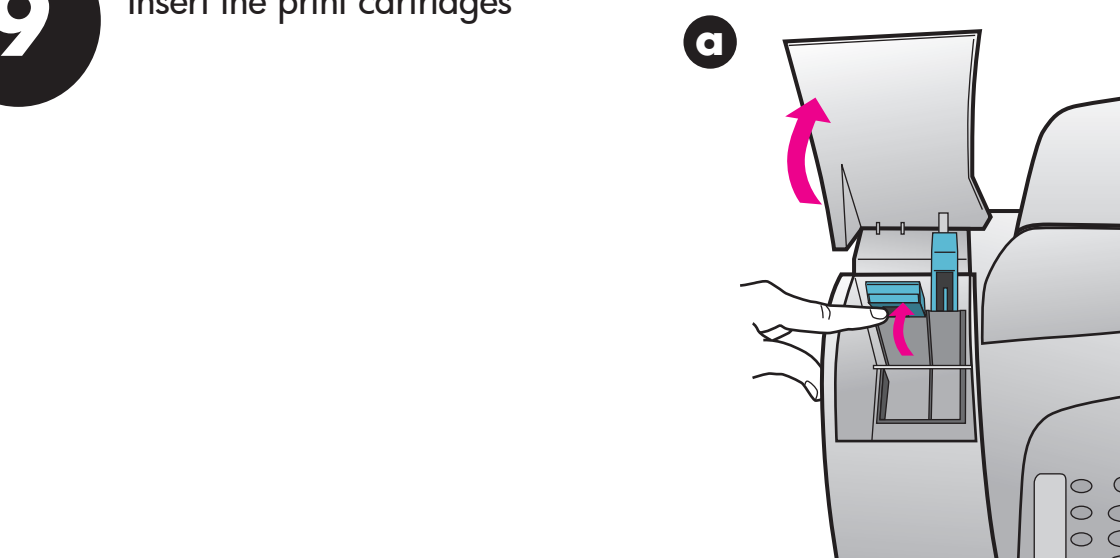
Choose your language and country/region

- 11 English
- 12 Español
- 13 Français
- 14 Deutsch
- 15 Português
- 16 Nederlands
- 17 Italiano
- 18 Dansk
- 19 Suomi
- 20 Norsk
- 21 Svenska

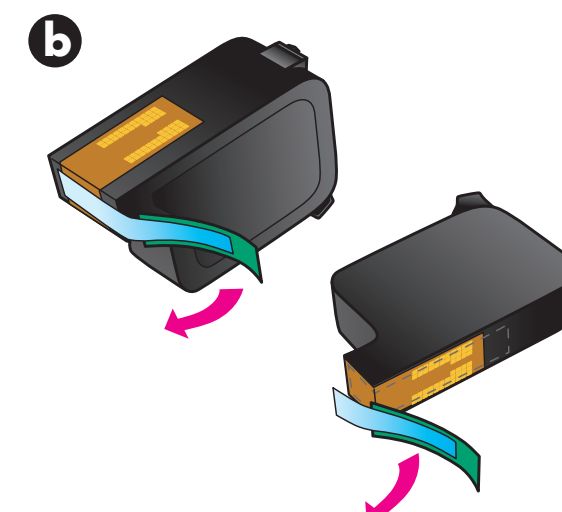
- a** Look at the front-panel display. Enter the code for your language on the keypad, and then confirm your selection.
- b** Enter the code for your country/region, and then confirm your selection. If you make a mistake, press **Setup**, **5**, and then **5** again to return to the language menu.

**9**

Insert the print cartridges



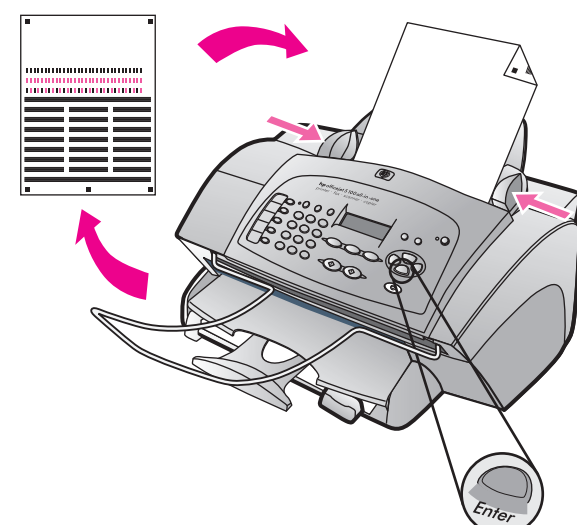
Lift the print cartridge door up until it catches. Wait for the print carriage to move into view. Lift the latches.



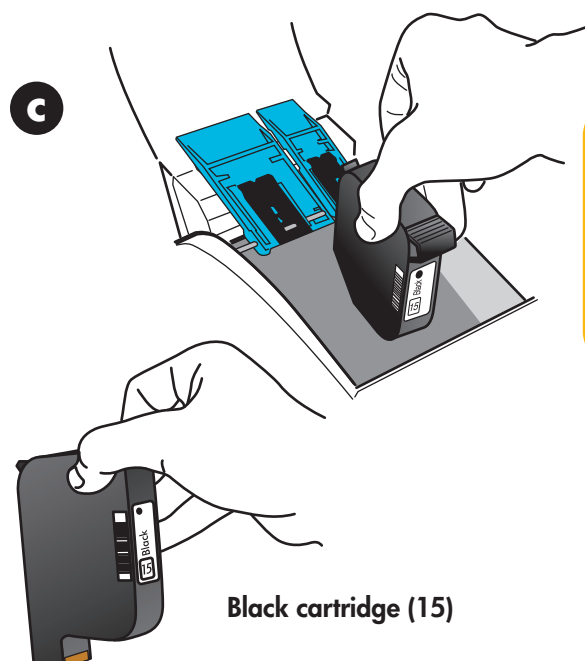
Pull the green tab to remove the blue tape from the print cartridges. Do not touch the gold-colored contacts or retape the cartridges.

**10**

Align print cartridges



- a** When prompted, press the **Enter** button on the front panel to begin aligning the print cartridges. A text page and an align cartridges (test pattern) page print. Follow the instructions on the text page.
- b** Load the align cartridges page face down in the ADF between the paper-width guides and press the **Enter** button again.
- c** Discard or recycle the printouts.



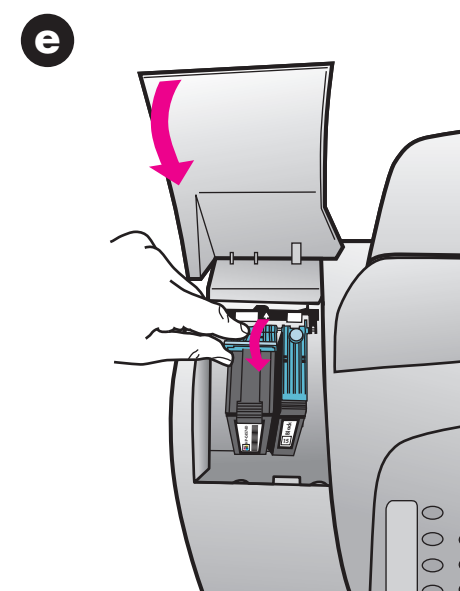
Black cartridge (15)

Hold the black print cartridge (the thinner one) with the label facing you as shown. Slide the cartridge into the right side of the print carriage.



Color cartridge (78)

Hold the color print cartridge (the wider one) with the label facing you as shown. Slide the cartridge into the left side of the print carriage.



Lower the print-cartridge latches onto the top of the cartridges, and push down firmly until the cartridges lock into place. Close the print cartridge door.

**11**

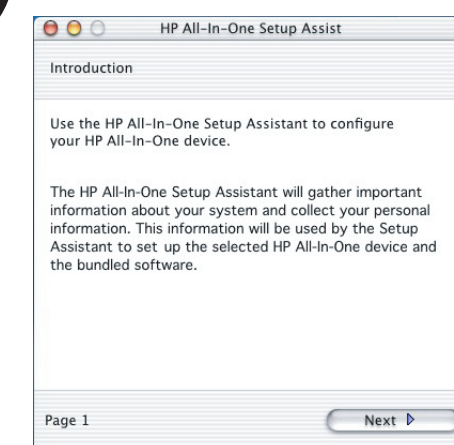
Install the software



- a** Turn on your Macintosh and wait for it to start up. Insert the HP Officejet software CD for your operating system.
- b** Double-click the **HP All-in-One Installer** icon on your desktop.
- c** Follow the onscreen instructions. You may be prompted to restart your Macintosh during setup.

**12**

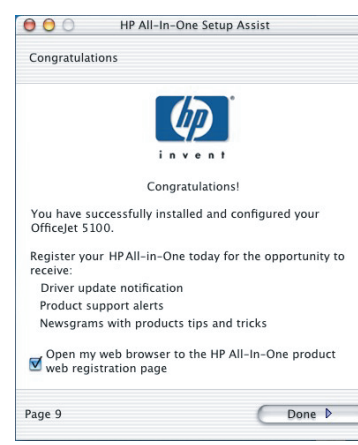
Run the Setup Assistant



Make sure you complete the Setup Assistant. Your HP Officejet must be on while you complete software installation.

**13**

Try your new HP Officejet



What's next?

- Take the product tour
- Use the Director
- Check the Reference Guide

[www.hp.com/support](http://www.hp.com/support)  
Copyright Hewlett-Packard Company 2002  
Printed in USA, Mexico, Germany, and Singapore

**Macintosh setup poster**  
**hp officejet 5100 series all-in-one**

