

1 Windows Users START HERE Windows 使用者從此處開始



This side of the poster is for **Windows** users. Make sure you are using the CD and side of the poster that matches your operating system.

本面海報是供 **Windows** 使用者使用。請確定您使用符合作業系統的 CD 和正確的海報頁面。

2 Turn your computer on 打開您的電腦

- Turn on your computer and wait for the Windows desktop to appear.
- Close any open programs.

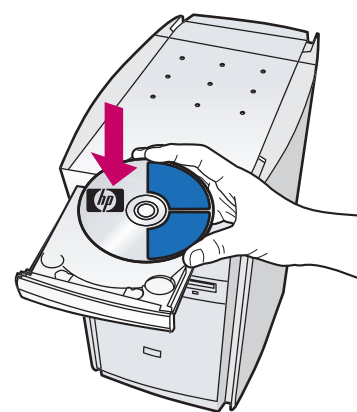
- 打開您的電腦，等待 Windows 桌面出現。
- 關閉任何開啓的程式。



3 Begin software installation 開始軟體安裝

- Insert the HP PSC Windows CD.
- Follow the onscreen instructions.

- 插入 HP PSC Windows CD。
- 依照螢幕上的指示進行。



If the software does not appear on your computer screen after inserting the CD, see the Troubleshooting Information chapter in the Reference Guide.

如果插入 CD 後，電腦螢幕上沒有出現軟體，請參閱《參考指南》的「疑難排解資訊」一章。

- Do not connect the USB cable yet.** When you see the **Setup your Device Now** dialog box, continue to step 4.

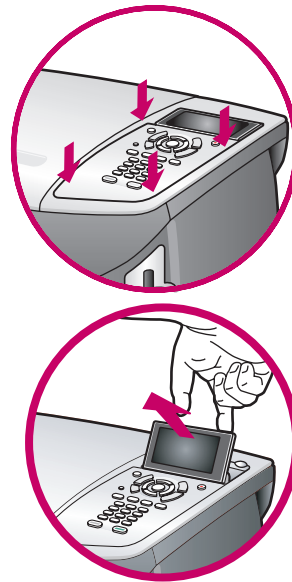
- 請還不要連接 USB 纜線。** 當您看到「立即設定裝置」對話方塊時，請繼續進行步驟 4。



4 Attach front panel cover 安裝面板蓋

- Remove any packaging material.
- Place the front panel cover over the buttons. Firmly press on the sides to snap the cover in place. Make sure all the buttons are visible.
- Lift the display.

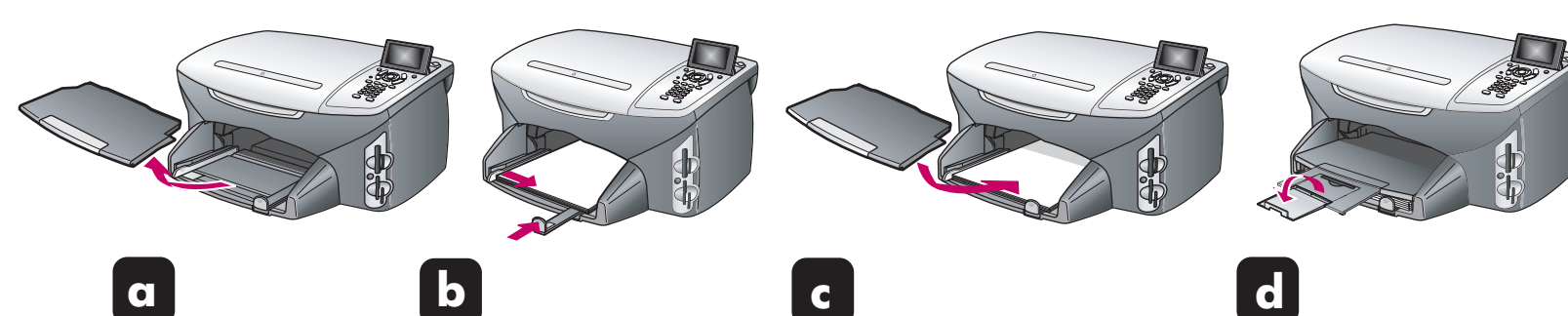
- 移除所有的包裝材料。
- 將面板蓋放在按鈕上。穩固地壓下每一邊，將面板蓋卡在正確位置。確認可以看見所有的按鈕。
- 抬起顯示器。



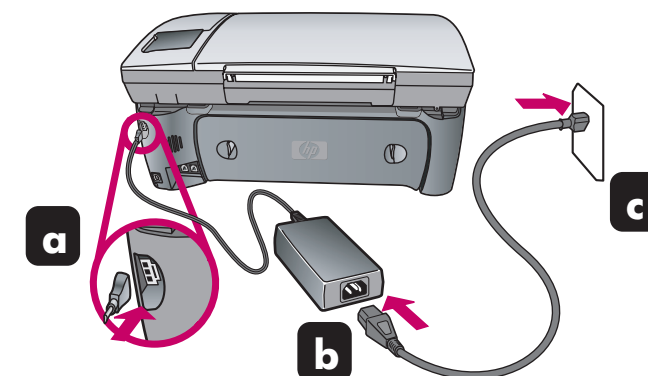
5 Load paper 載入紙張

Use plain white paper to prepare for print alignment.

使用一般白紙準備列印校正頁。



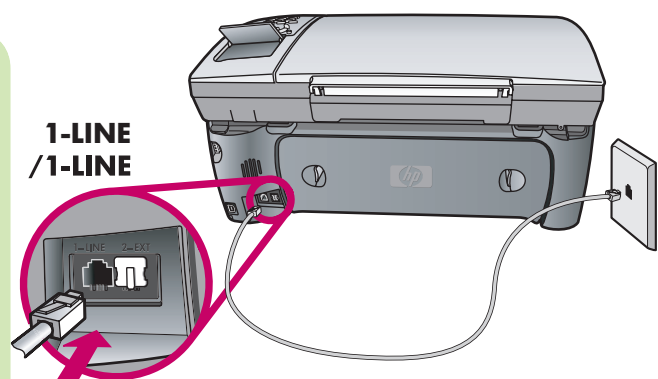
6 Connect power cords 連接電源線



7 Connect phone cord 連接電話線

- You must connect the supplied phone cord to the phone jack on the left (1-LINE).
- To connect an answering machine or use your own phone cord, see the Fax Setup chapter in the Reference Guide.

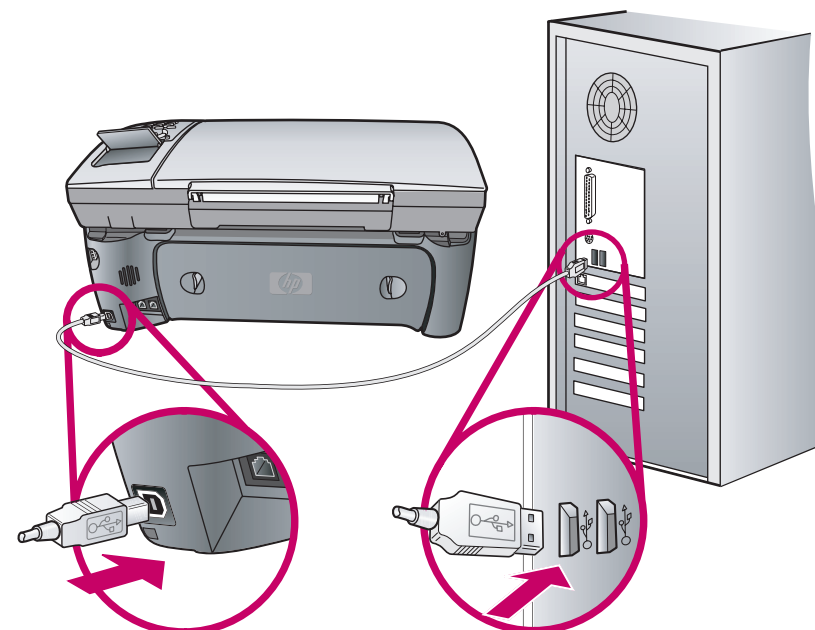
- 您必須將提供的電話線連接到電話左邊的插孔 (1-LINE)。(請不要使用其他產品的電話線。)
- 若要連接答錄機或使用您自己的電話線，請參閱《參考指南》的「傳真設定」一章。



8 Connect USB cable 連接 USB 纜線

Make sure that you see the screen in step 3 before plugging in your USB cable. Do not connect the USB cable to a keyboard.

在插入 USB 纜線之前，請先確認您在螢幕上看到步驟 3。請勿將 USB 纜線連至鍵盤。

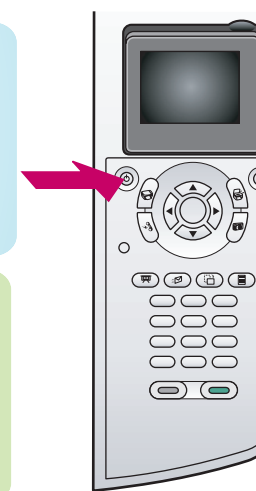


9 Turn HP device on 開啟 HP 裝置

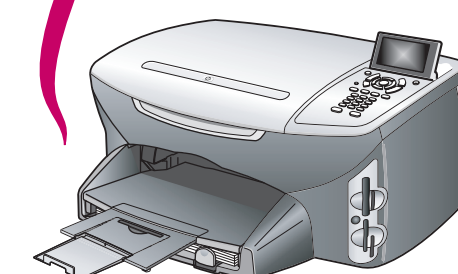
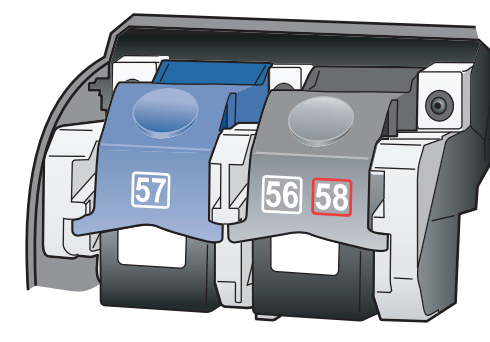
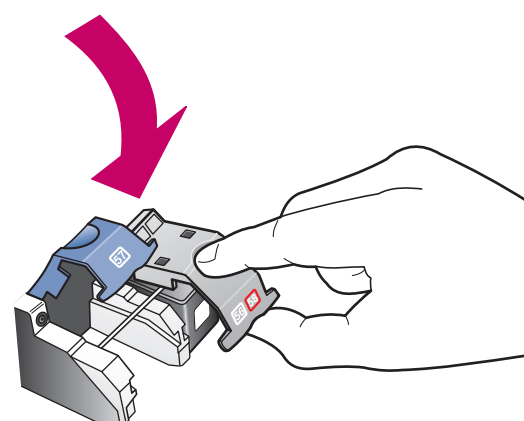
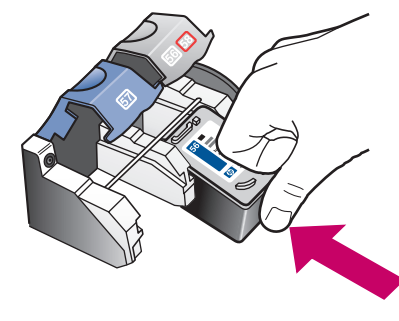
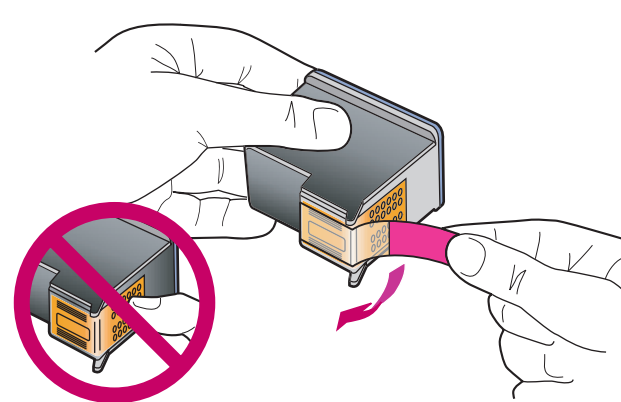
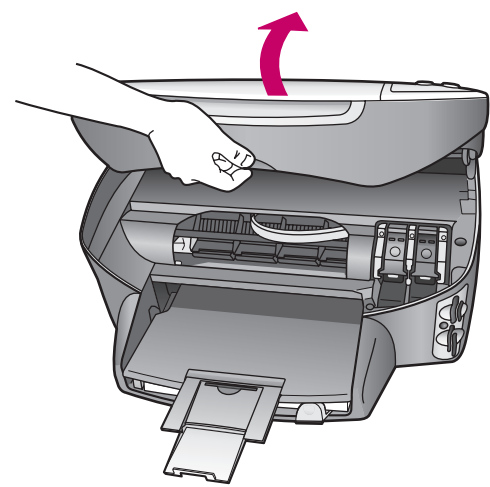
- Turn power on.
- Select your language, and then press **OK**. Select your country/region (if not listed, select Singapore), then press **OK**.

開啟電源。

選擇您的語言，然後按 **OK**。選擇您的國家/地區，然後按 **OK**。



10 Insert and align print cartridges 插入並校正列印墨匣



- Make sure the power is on. Lift the print carriage door up until it catches. Wait for the print carriage to move to the right. Lift the blue and gray latches.

- Remove the bright pink tape from both print cartridges. Do not touch the gold-colored contacts or retape the cartridges.

- Hold the black print cartridge with the HP label on top. Slide the cartridge into the right (gray latch) side of the print carriage.

- Press down on the gray latch until it locks into place. Insert the color cartridge on the left side, and lock into place.

- Make sure both latches are locked into position. Close the door.

- Press **OK** on the front panel to begin alignment. After a page prints, alignment is complete. Discard or recycle this page.

- 請確認已開啓電源。抬起列印托架門，直到卡住為止。等候列印托架移到右方。抬起藍色和灰色門門。

- 移除兩個列印墨匣的粉紅色膠帶。請勿接觸金色的接觸點，或將膠帶再貼回墨匣上。

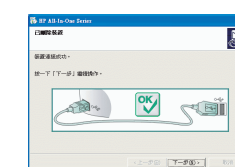
- 拿著黑色的列印墨匣，讓 HP 標誌朝上。將墨匣滑入右邊 (灰色門門) 的列印托架。

- 壓下灰色門門直到鎖定在位置上為止。在左邊插入彩色墨匣，並鎖定在位置上。

- 請確認兩個門門都鎖定在位置上。將門關上。

- 按一下面板上的 **OK** 開始校正。列印頁面後，即完成校正。丟棄或回收該頁。

11 Finish software installation 完成軟體安裝


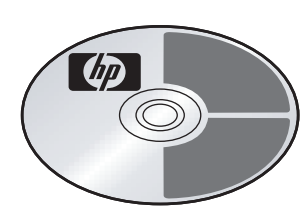


- Hardware setup is complete. Return to your computer. On the dialog box with the green checkmark, click **Next**. Depending on your system, it may take 20 minutes or more to finish installing the software.
- After you restart your computer, the Fax Setup Wizard appears. Follow the onscreen instructions. When you see the **Congratulations!** dialog box, you are ready to use your HP PSC. If you encounter any problems during setup, see the Reference Guide.

- 硬體設定已經完成。返回您的電腦。在有綠色核取記號的對話方塊，按一下「下一步」。根據不同的系統，完成軟體安裝可能需要花 20 分鐘或以上。

- 在您重新啓動電腦後，會出現「傳真設定精靈」。請隨著螢幕上的指示進行。當您看到「恭喜！」對話方塊時，就可以使用 HP PSC 了。如果您在安裝時遇到任何問題，請參閱《參考指南》。

1 Macintosh Users START HERE

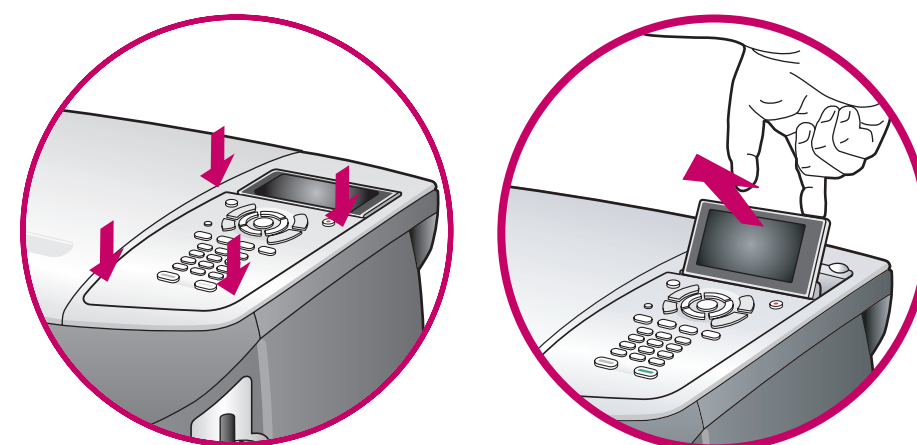
This side of the poster is for **Macintosh** users. Make sure you are using the correct side of the poster and CD for your operating system.

2 Attach front panel cover

a Remove any packaging material.

b Place the front panel cover over the buttons. Firmly press on the sides to snap the cover in place. Make sure all the buttons are visible.

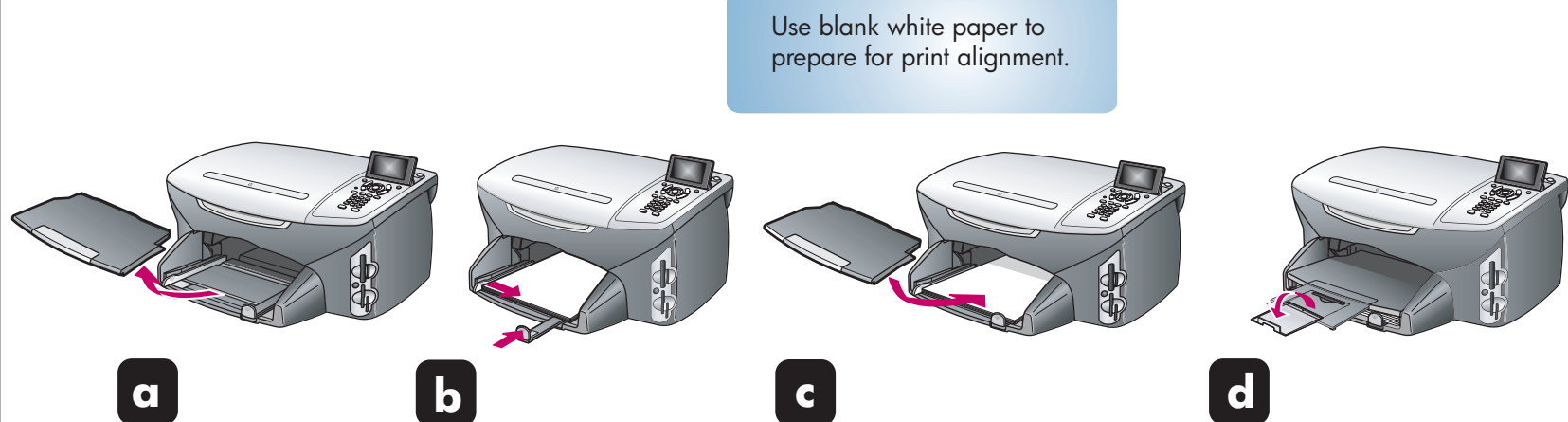
c Lift the display.



3 Load paper

Use blank white paper to prepare for print alignment.

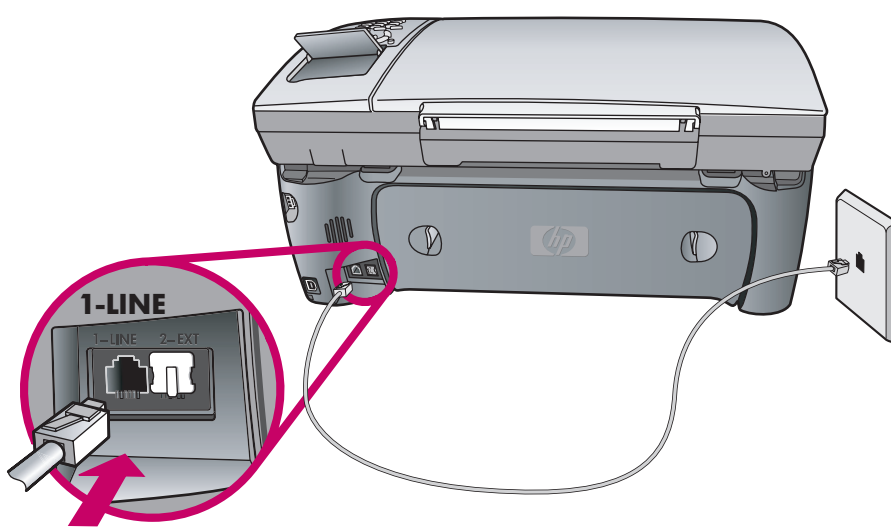
a **b** **c** **d**



4 Connect phone cord

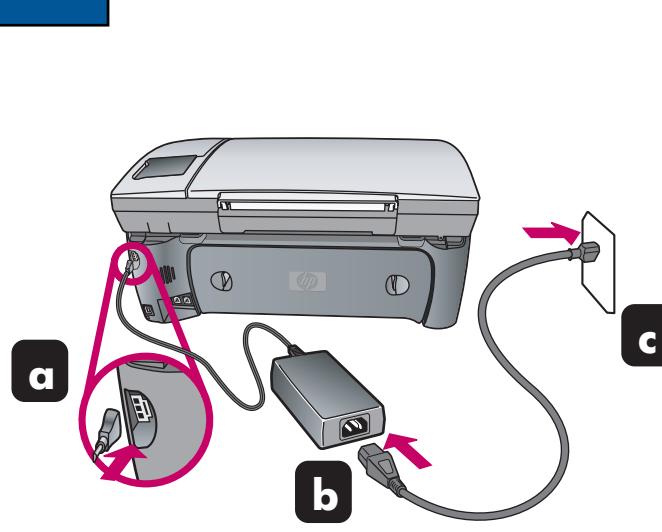
a You must connect the supplied phone cord to the phone jack on the left (1-LINE).

b To connect an answering machine or use your own phone cord, see the Fax Setup chapter in the Reference Guide.



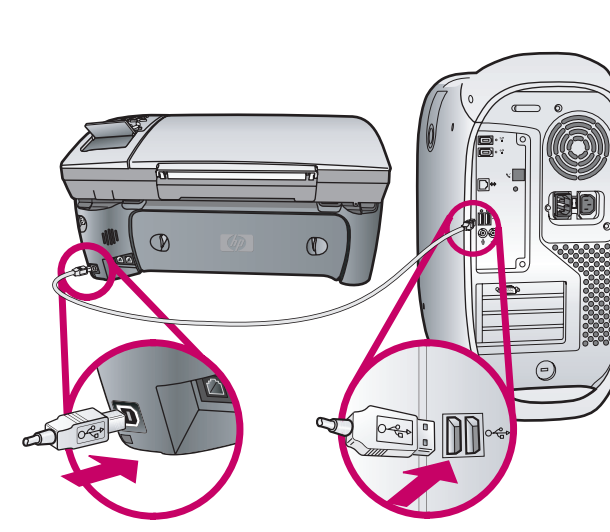
5 Connect power cords

a **b** **c**



6 Connect USB cable

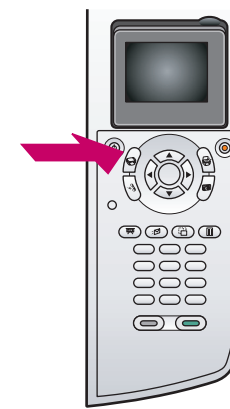
Do not connect the USB cable to a keyboard.



7 Turn HP device on

a Turn power on.

b Select your language, and then press **OK**. Select your country/region (if not listed, select Singapore), then press **OK**.



8 Insert print cartridges

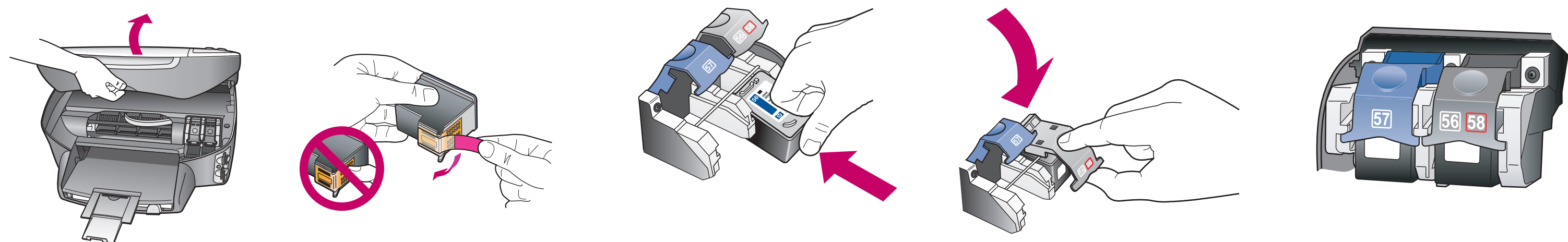
a Lift the print carriage door until it catches. Wait for the print carriage to move to the right. Lift the blue and gray latches.

b Remove the bright pink tape from both print cartridges. Do not touch the gold-colored contacts or retape the cartridges.

c Hold the black print cartridge with the HP logo on top. Slide the cartridge into the right (gray latch) side of the print carriage.

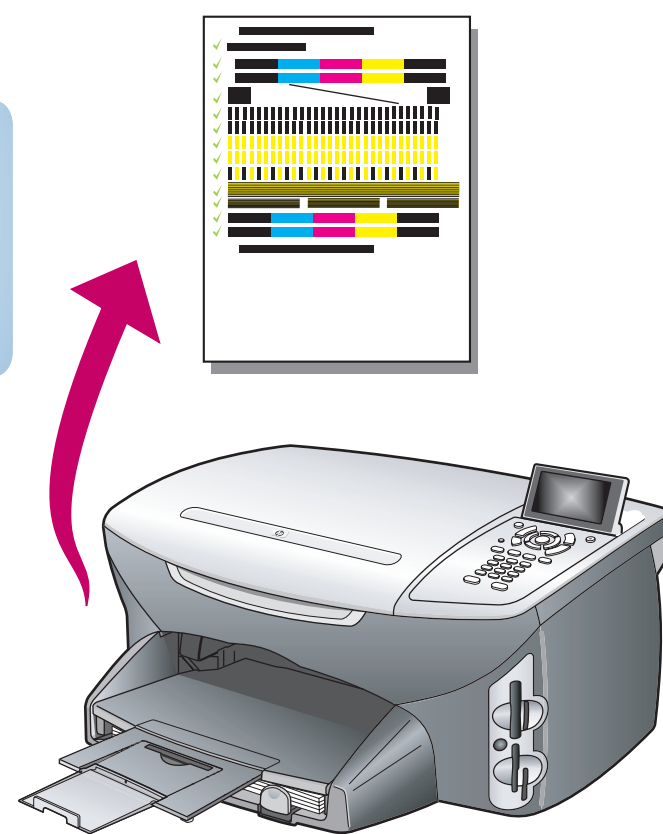
d Press down on the gray latch until it locks into place. Insert the color cartridge on the left side, and lock into place.

e Make sure both latches are locked into position. Close the door.



9 Align print cartridges

Press **OK** on the front panel to begin alignment. After a page prints, alignment is complete.



10 Install software

a Turn on your Macintosh wait for it to finish starting up. Insert the HP PSC Macintosh CD.

b Double-click the **HP All-In-One Installer** icon on your desktop.

c Follow the onscreen instruction. Make sure you complete the Setup Assistant.





11 Congratulations!

You are ready to begin using your HP device. See the Reference Guide to get started.

