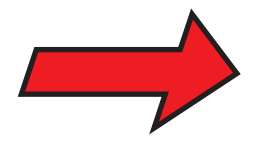


START HERE



Windows 98, 2000, ME, XP

Make sure you are using the correct side of the poster.

Windows users: Follow the steps in order. Do not connect the USB cable until instructed to do so. See your box for exact contents and system requirements.

1

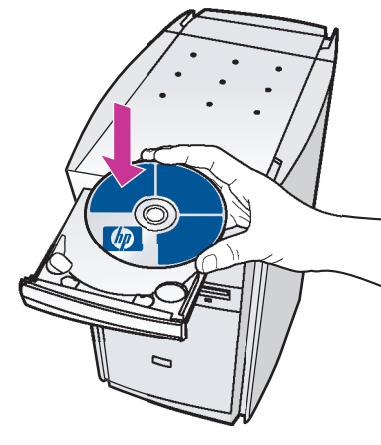
Turn on your PC



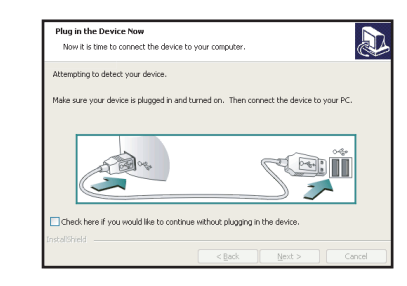
- a Turn your PC on and wait for the Windows desktop to appear.
- b Close any open programs, including virus-checking programs.

2

Install the software first



- a Insert the HP PSC software CD.
- b Follow the onscreen instructions.

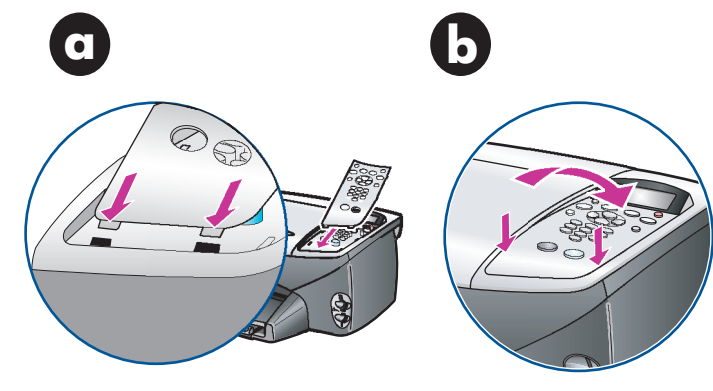


- c When prompted to plug in the device (as shown to the left), go to step 3. Return to your computer in step 9.

If nothing appears on your computer screen after inserting the CD, search for setup.exe on the CD and double-click the file.

3

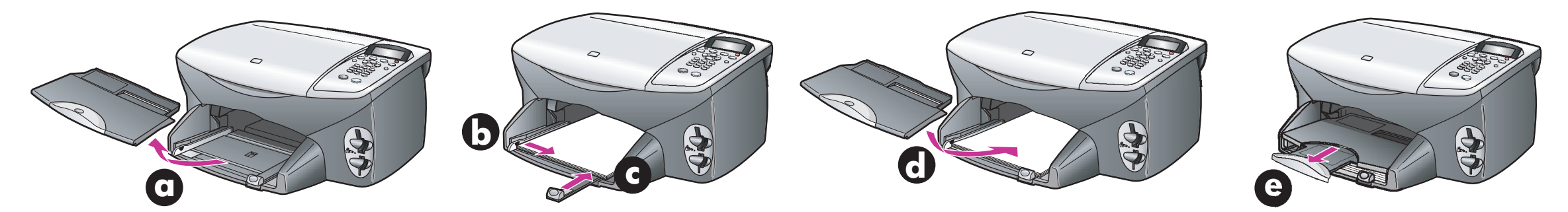
Attach the cover



- a Insert the two bottom tabs of the cover into the slots on the unit.
- b Tilt the cover down and press firmly. Make sure the tabs lock into place and the cover is even with the device.

4

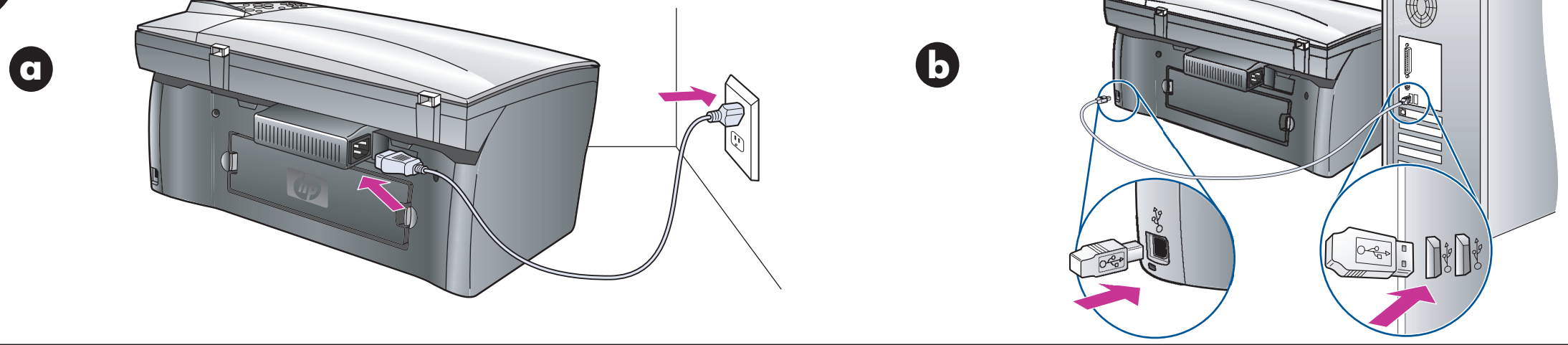
Remove output tray and load paper



Use blank white paper to prepare for print alignment.

5

Connect the power cord and USB cable

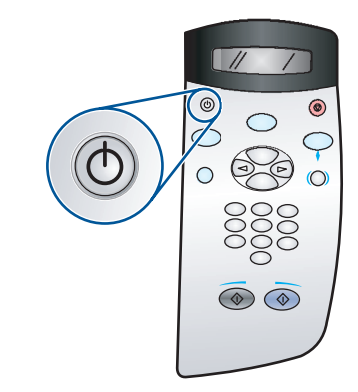


Do not connect the USB cable until you see the screen in Step 2. Do not connect the USB cable to a keyboard or non-powered hub.



6

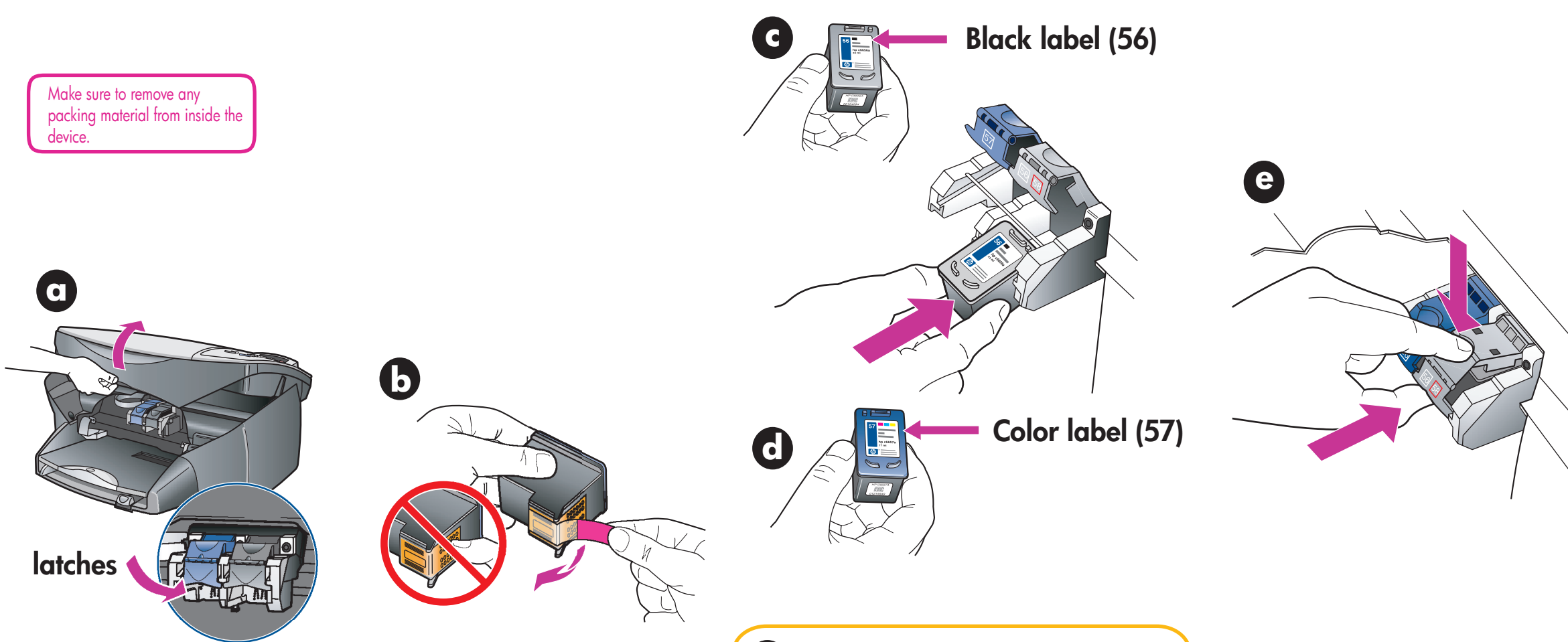
Turn on your HP PSC



Turn power **On** and wait for display prompt. Note: See the reference guide for adjusting the display viewing angle.

7

Insert and align the print cartridges



Make sure to remove any packing material from inside the device.

Black label (56)

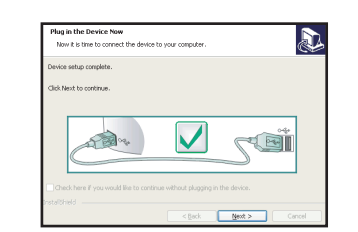
Color label (57)

- a Lift the print carriage door up until it catches. Wait for the print carriage to move to the center. Lift the blue and gray latches.
- b Remove the bright pink tape from the print cartridges. Do not touch the gold-colored contacts or retape the cartridges.
- c Hold the black print cartridge with the label on top as shown. Slide the cartridge into the right (gray latch) side of the print carriage.
- d Hold the color print cartridge with the label on top as shown. Slide the cartridge into the left (blue latch) side of the print carriage.
- e Pull the end of the gray latch toward you, press down until it stops, and then release. Make sure the latch catches below the bottom tabs. Repeat with the blue latch.
- f Make sure both latches are locked into position. Close the door.
- g Press **Enter** on the front panel to begin alignment. After a page prints, alignment is complete. Discard or recycle this page.

8

Finish software setup

Look at the screen with the green checkmark, and then continue. If you see the screen with the red "X", follow the instructions in the Readme.



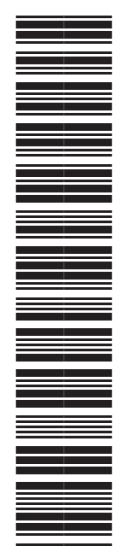
9

Try your new HP PSC

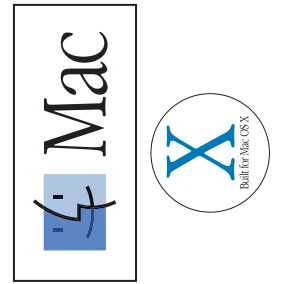
Congratulations! You are now ready to use the HP PSC. Double-click the Director icon to get started.



Make sure there are five icons in the HP Director window. If not, see the reference guide.



Q3066-90192



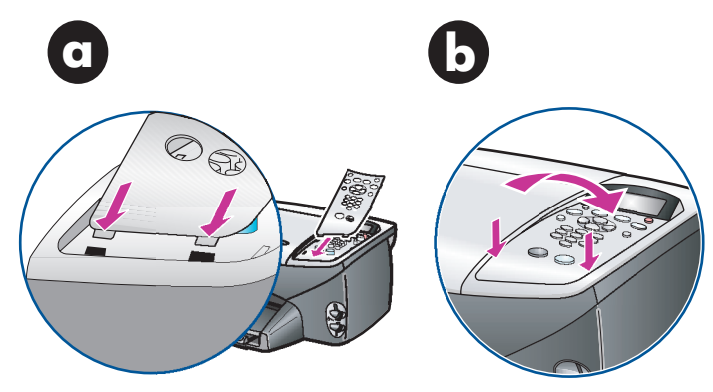
Macintosh® OS 9, OS X

Make sure you are using the correct side of the poster.
See your box for exact contents and system requirements. Windows users: see other side.

1 Attach the cover

a Insert the two bottom tabs of the cover into the slots on the device.

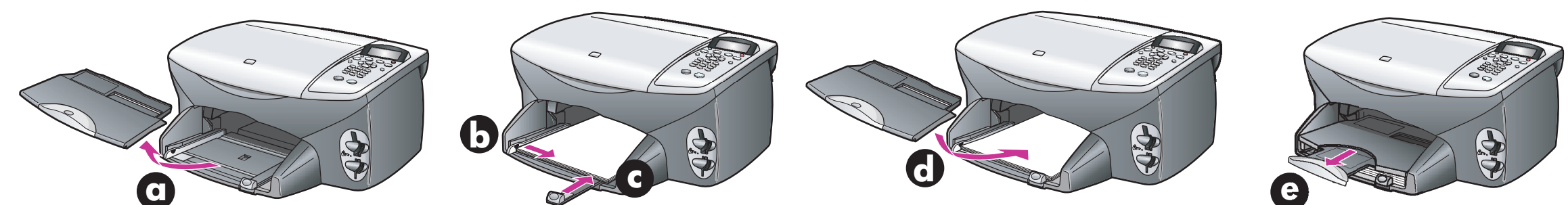
b Tilt the cover down and press firmly. Make sure the tabs lock into place and the cover is even with the device.



2 Remove output tray and load paper

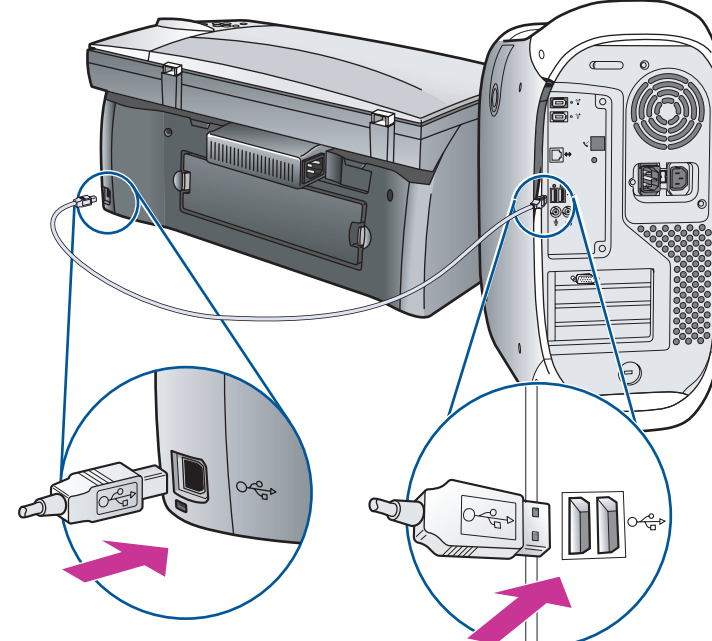
Use blank white paper to prepare for print alignment.

a **b** **c** **d** **e**

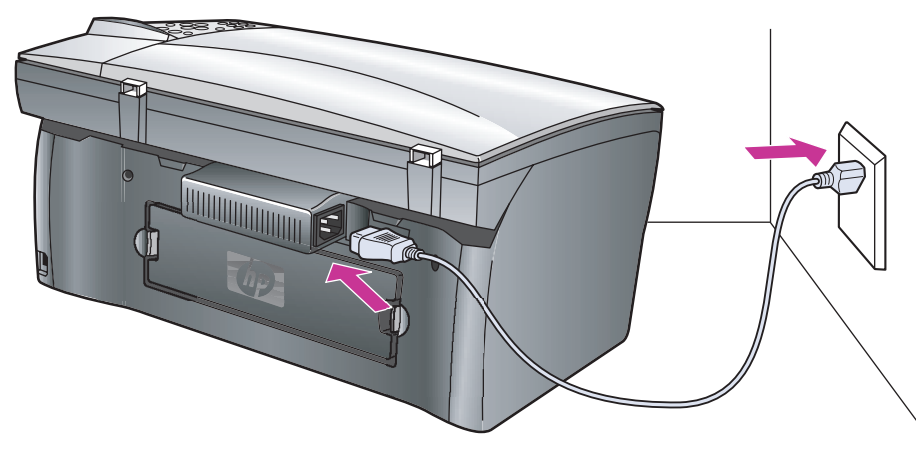


3 Connect the USB cable


If you have an iMac, your USB port is on the side. Do not connect the HP PSC to a USB port on a keyboard or non-powered USB hub. See the reference guide for more details.



4 Connect the power cord



5 Turn on your HP PSC



6 Insert and align the print cartridges

Make sure to remove any packing material from inside the device.

a Lift the print carriage door up until it catches. Wait for the print carriage to move to the center. Lift the blue and gray latches.

b Remove the bright pink tape from the print cartridge. Do not touch the gold-colored contacts or retape the cartridges.

c Hold the black print cartridge with the label on top as shown. Slide the cartridge into the right (gray latch) side of the print carriage.

d Hold the color print cartridge with the label on top as shown. Slide the cartridge into the left (blue latch) side of the print carriage.

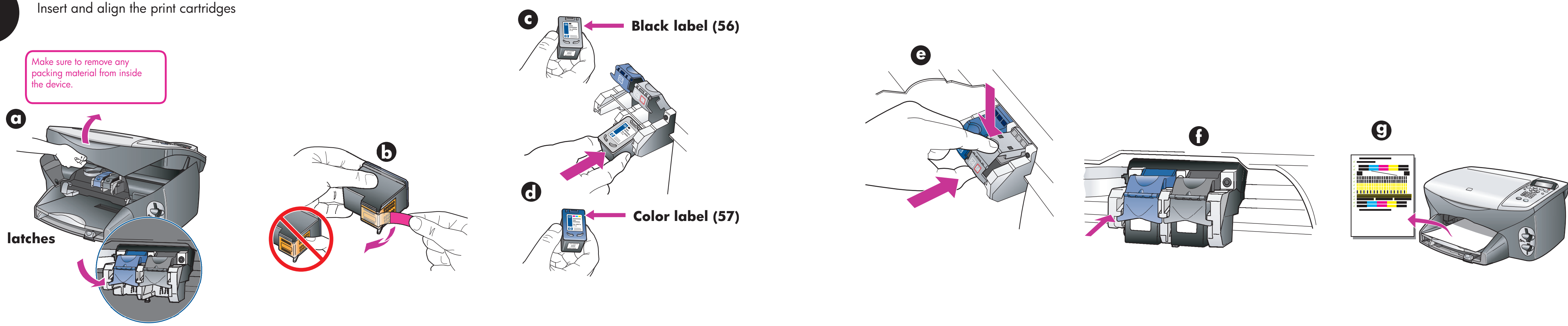
e Pull the end of the gray latch toward you, press down until it stops, and then release. Make sure the latch catches below the bottom tabs. Repeat with blue latch.

f Make sure both latches are locked into position. Close the door.

g Press **Enter** on the front panel to begin alignment. After a page prints, alignment is complete. Discard or recycle this page.

Black label (56)

Color label (57)

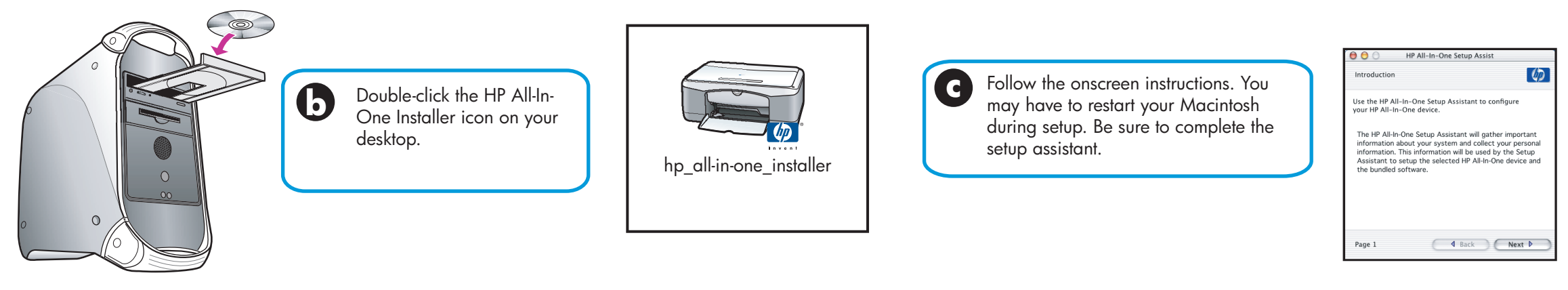


7 Install the software

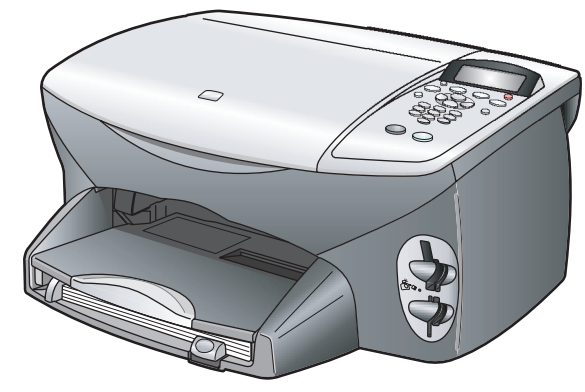
a Turn your Macintosh on and wait for your Macintosh to finish starting up. Insert the HP PSC software CD.

b Double-click the HP All-In-One Installer icon on your desktop.

c Follow the onscreen instructions. You may have to restart your Macintosh during setup. Be sure to complete the setup assistant.



8 Try your new HP PSC



Check the reference guide for other ways to get started with your HP PSC. The reference guide also provides instructions for changing the viewing angle on the display.