

Q3500-90204



1 Windows users START HERE Windows 用户从这里开始

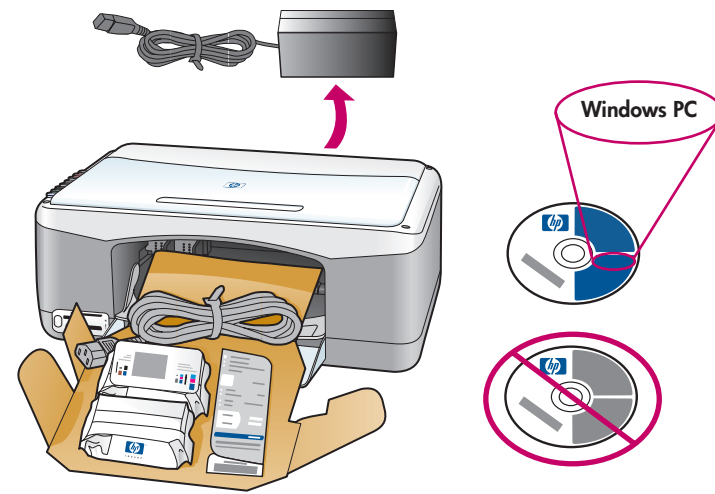
This side of the poster is for Windows users only.
Follow the steps on this poster in order.
Do not connect the USB cable until the software prompts you to do so.



Windows 98,
2000, ME, XP

本页海报仅供 **Windows** 用户使用。
请依次执行此海报中的步骤。
在软件未提示连接 USB 电缆前，请勿连接。

2 Unpack the device 拆开设备包装



3 Turn on the computer 打开计算机

Turn on your computer and wait for the Windows PC desktop to appear.
Close any open programs.



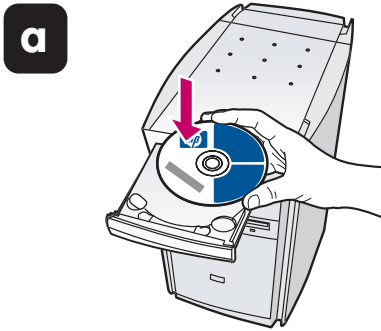
Windows PC desktop
Windows PC 桌面

打开计算机，等待 Windows PC 桌面出现。

关闭所有已打开的程序。

4 Begin software installation 开始软件安装

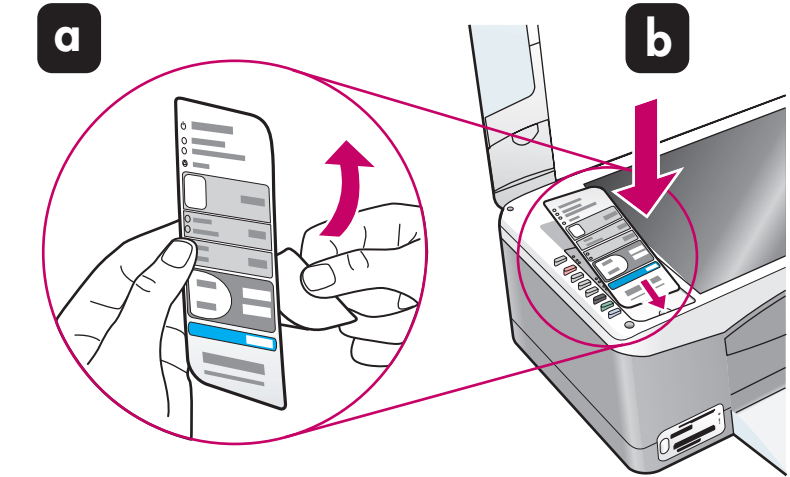
- a** Insert the Windows HP PSC CD and follow the onscreen instructions.
If nothing appears on your computer screen after you insert the CD, see the Troubleshooting Information chapter in the Reference Guide.
- b** When you see the Set Up Your Device Now screen, leave your computer and proceed to step 5 on this poster. **Do not connect the USB cable yet.**



- a** 插入 Windows HP PSC CD 并按照屏幕上的说明进行操作。
如果插入 CD 后，计算机屏幕上没有出现任何内容，请参阅《参考手册》的“疑难排解信息”一章。
- b** 当出现“立即安装设备”屏幕时，请离开计算机并执行此海报的第 5 步。此时仍不要连接 USB 电缆。

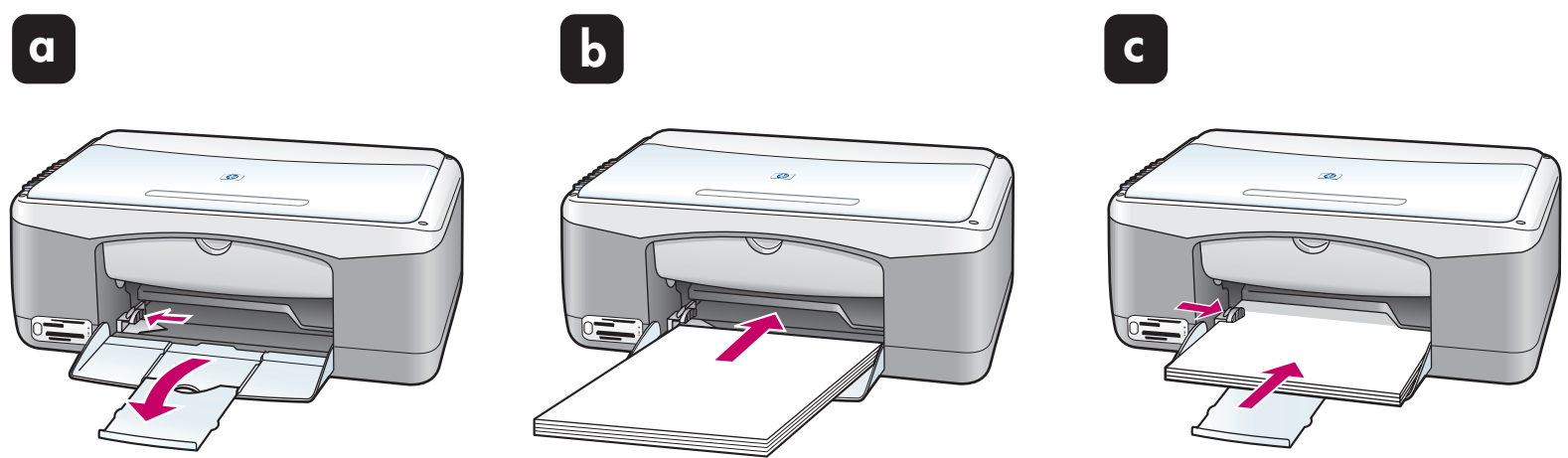
5 Attach the front panel cover 安装面板盖

- a** Remove the adhesive backing from the front panel cover.
b Raise the lid of the HP PSC. Place the front panel cover into the recess and stick it into place.
The HP PSC will not work until you attach the front panel cover!

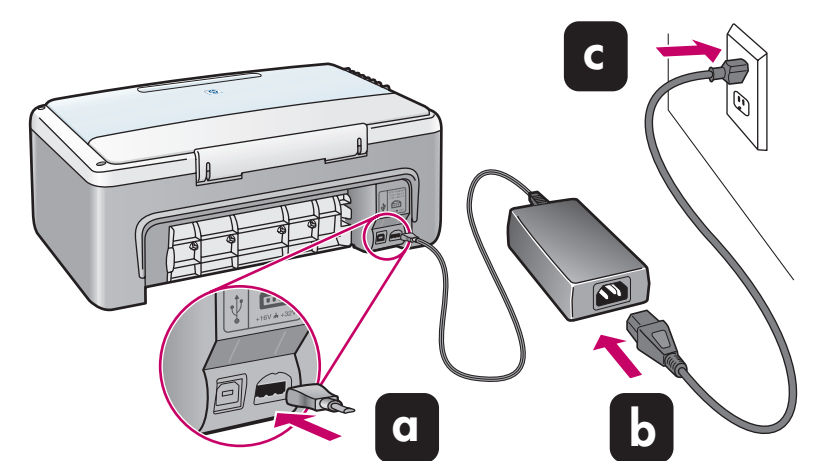


- a** 除去面板盖上的贴纸。
b 抬起 HP PSC 的盖子。将面板盖放到凹陷处并粘贴到位。
如果不安装面板盖，HP PSC 将无法工作！

6 Load plain white paper 装入普通白纸



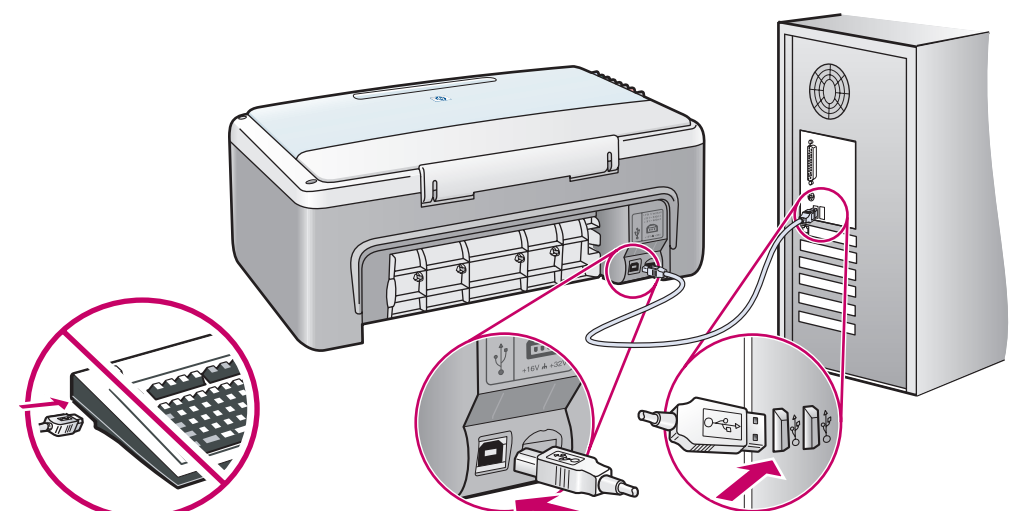
7 Connect the power cords 连接电源线



8 Connect the USB cable 连接 USB 电缆

Make sure that you see the Set Up Your Device Now screen on your computer, then connect the USB cable. Do not connect the USB cable to a keyboard or a non-powered USB hub.

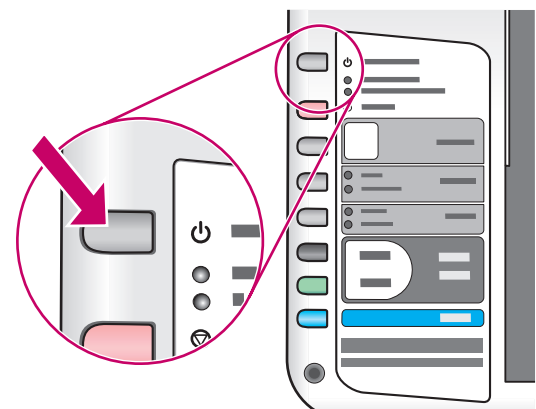
确保计算机上出现“立即安装设备”屏幕，然后连接 USB 电缆。请勿将 USB 电缆连接到键盘或无源 USB 集线器上。



9 Turn on the device 打开设备

Press the **On/Resume** button to turn on the HP PSC. Wait for it to finish initializing.

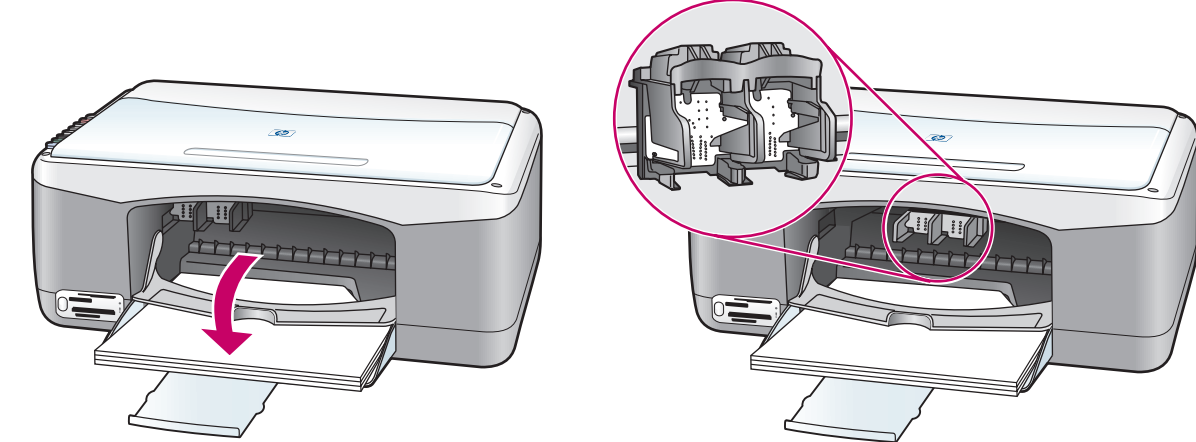
按“启动/重新开始”按钮打开 HP PSC。等待其完成初始化。



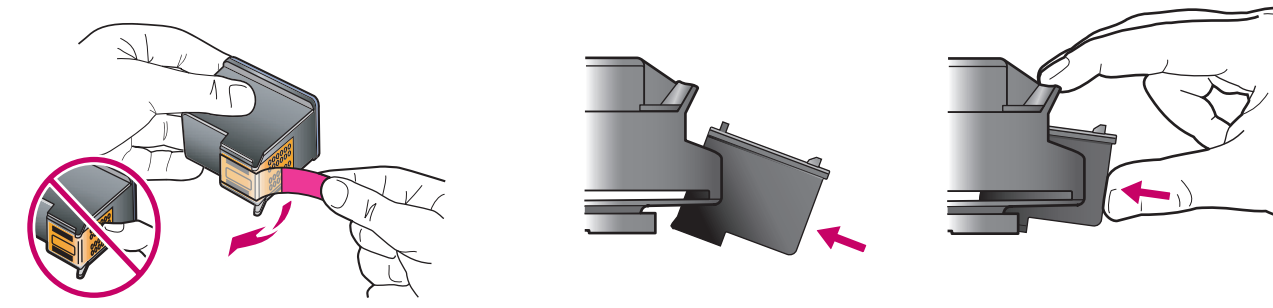
10 Open the print-carriage access door 打开打印托架检修门

Lower the print-carriage access door. The print carriage slides to the middle.

放下打印托架检修门。打印托架会滑到中央。



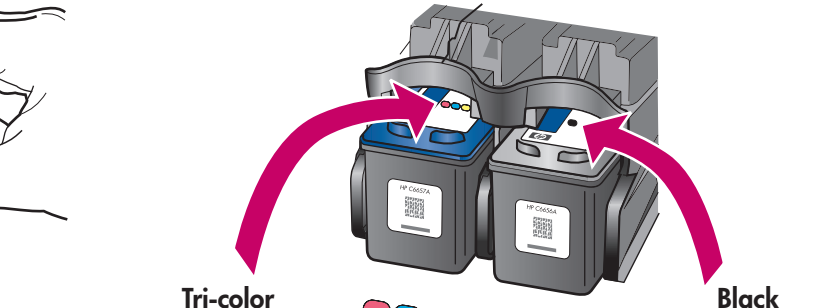
11 Insert and align the print cartridges 插入并校准墨盒



- a** Remove the bright pink tape from the print cartridges. Do not touch the gold-colored contacts or retape the cartridges.
- b** Hold the black print cartridge with the **large HP label and the raised markings on top**. Slide the cartridge at a slight angle into the **right** side of the print carriage. Press firmly until the print cartridge snaps into place.

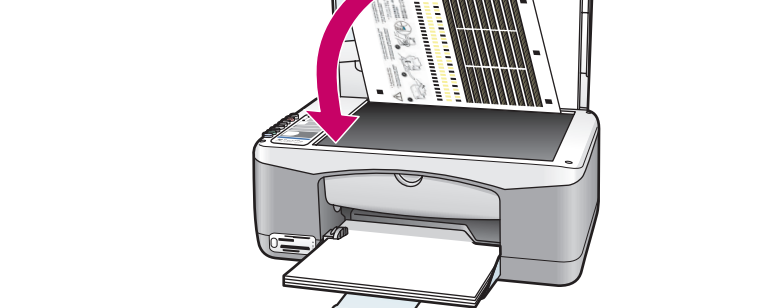
除去墨盒上的亮粉色胶带。请勿接触金色触点或重新贴上墨盒胶带。

握住带有大 HP 标签的黑色墨盒，并使标签朝上。将墨盒以较小的角度滑入打印托架的右侧。用力按压直到墨盒锁定到位。



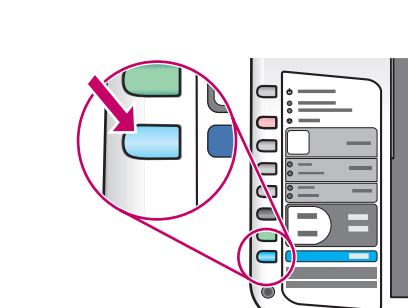
- c** Hold the color print cartridge with the **large HP label and the raised markings on top**. Slide the cartridge at a slight angle into the **left** side of the print carriage. Press firmly until the print cartridge snaps into place. Make sure that both print cartridges are secure.

握住带有大 HP 标签的彩色墨盒，并使标签朝上。将墨盒以较小的角度滑入打印托架的左侧。用力按压直到墨盒锁定到位。确保两个墨盒都完全锁定到位。



- d** Close the print-carriage access door. Within a few minutes, a print cartridge alignment page prints. Place the top of the alignment page face down in the left front corner of the glass. Close the lid.

关闭打印托架检修门。在几分钟内，会打印墨盒校准页。将校准页顶部面朝下放在玻璃板的左前角。盖上盖子。



- e** Press the **Scan** button. After the On light stops blinking, alignment is complete. Discard or recycle the alignment page.

按“扫描”按钮。
“启动”灯停止闪烁后，完成校准。丢弃或回收此校准页。

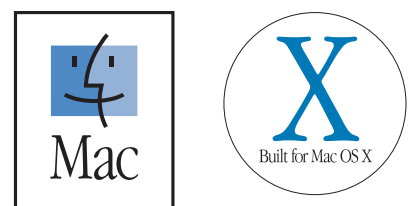
12 Finish software installation 完成软件安装



Hardware setup is now complete. Return to your computer. Click **Next** on the screen with the green checkmark. Depending on your system, it may take 20 minutes or more to finish installing the software. When you restart your computer and the Congratulations screen appears, you are ready to use your HP PSC. If you encounter problems during setup, see the **Reference Guide**.

硬件安装完成。请回到计算机进行操作。屏幕上出现绿色复选标记后，单击“下一步”。根据不同的系统，完成软件安装可能需要 20 分钟或更长时间。重新启动计算机并出现“祝贺您”屏幕时，您就可以开始使用 HP PSC 了。如果您在安装过程中遇到任何问题，请参阅《参考手册》。

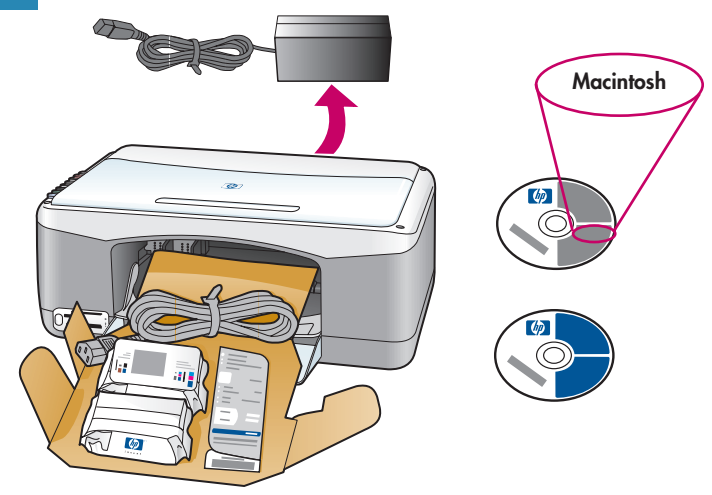
1 Macintosh users START HERE



Macintosh OS 9, OS X

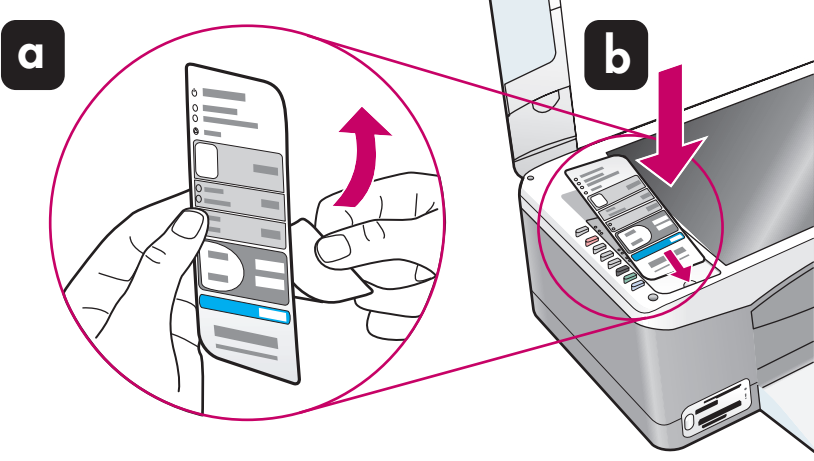
This side of the poster is for Macintosh users only.
Follow the steps on this poster in order.

2 Unpack the device

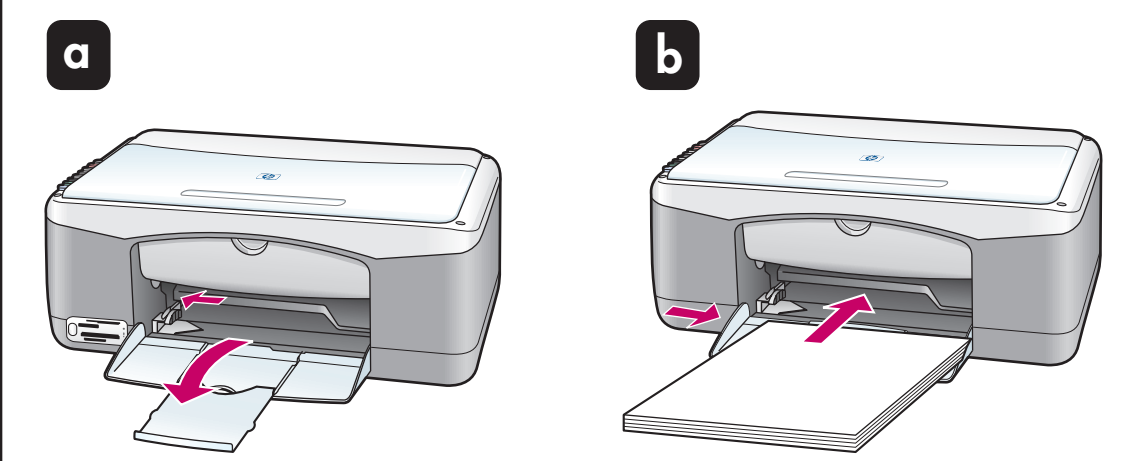


3 Attach the front panel cover

- a Remove the adhesive backing from the front panel cover.
 - b Raise the lid of the HP PSC. Place the front panel cover into the recess and stick it into place.
- The HP PSC will not work until you attach the front panel cover!

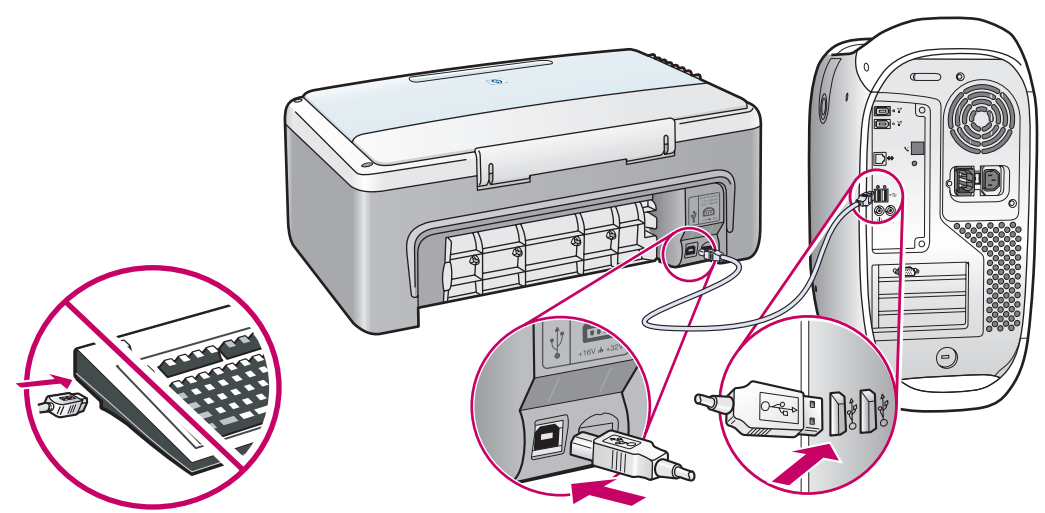


4 Load plain white paper

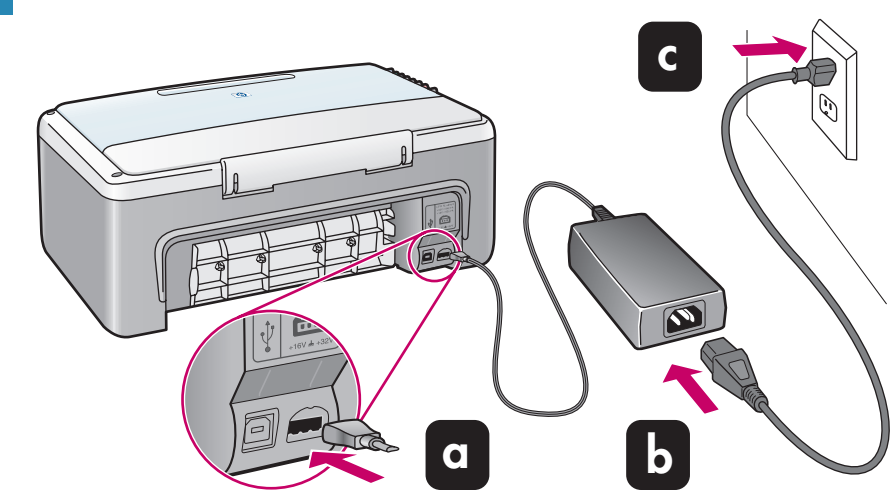


5 Connect the USB cable

If you have an iMac, the USB port is on the side. Do not connect the HP PSC to a USB port on a keyboard or a non-powered USB hub. See the **Reference Guide** for more details.

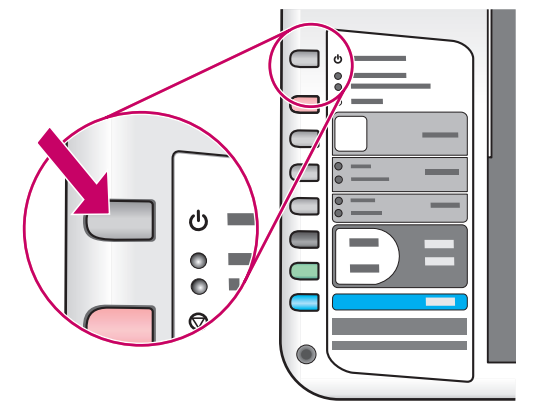


6 Connect the power cords

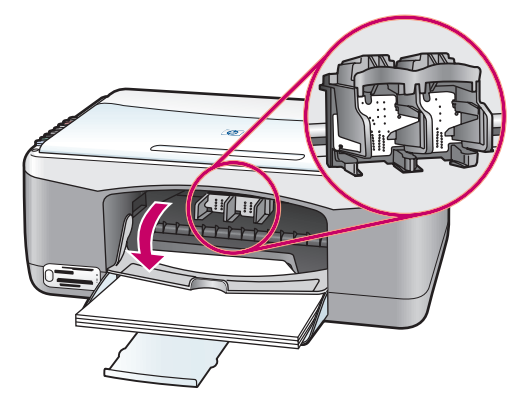


7 Turn on the HP PSC

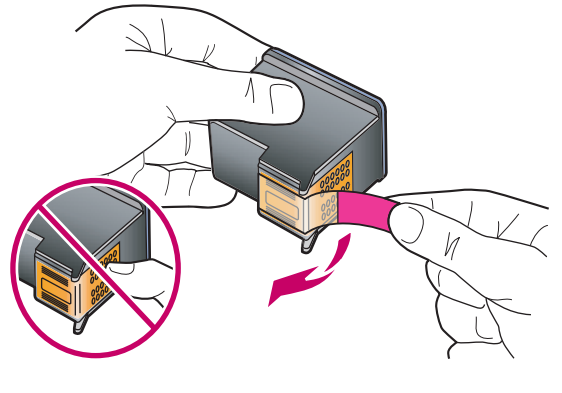
Press the **On/Resume** button to turn on the HP PSC. Wait for it to finish initializing.



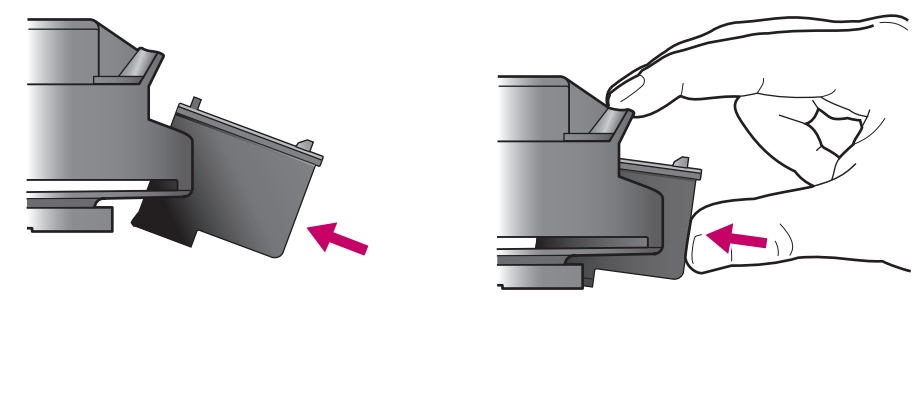
8 Insert and align the print cartridges



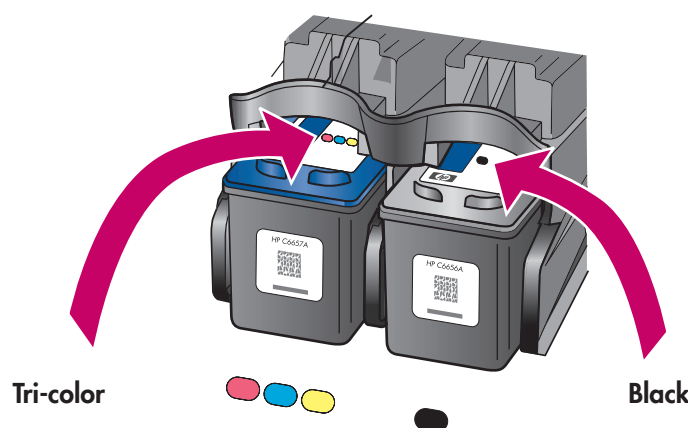
a Lower the print-carriage access door. The print carriage slides to the middle.



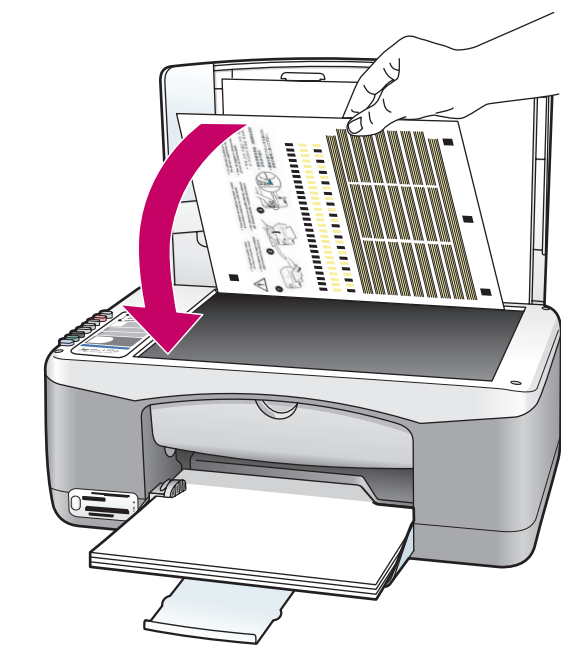
b Remove the bright pink tape from the print cartridges. Do not touch the gold-colored contacts or retape the cartridges.



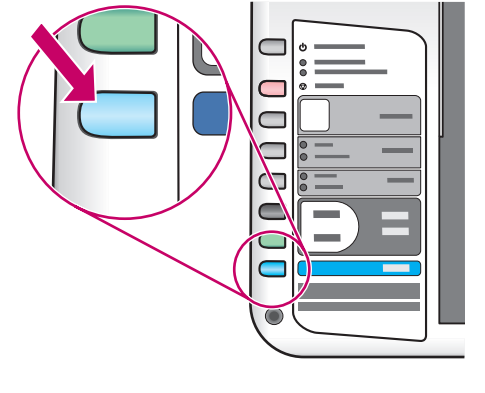
c Hold the black print cartridge with the **large HP label and the raised markings on top**. Slide the cartridge at a slight angle into the **right** side of the print carriage. Press firmly until the print cartridge snaps into place.



d Hold the color print cartridge with the **large HP label and the raised markings on top**. Slide the cartridge at a slight angle into the **left** side of the print carriage. Press firmly until the print cartridge snaps into place. Make sure that both print cartridges are secure.



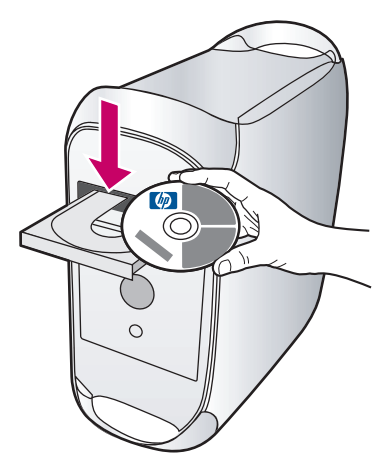
e Close the print-carriage access door. Within a few minutes, a print cartridge alignment page prints. Place the top of the alignment page face down on the front left corner of the glass. Close the lid.



f Press the **Scan** button. After the On light stops blinking, alignment is complete. Discard or recycle the alignment page.

9 Install the software

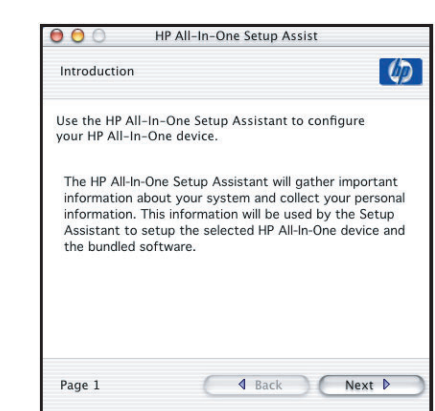
a Turn on your Macintosh and wait for it to finish starting up. Insert the Macintosh HP PSC CD.



b Double-click the HP All-In-One Installer icon on the desktop.



c Follow the onscreen instructions. You may have to restart your Macintosh during setup. Be sure to complete the setup assistant.



10 Try the HP PSC

Congratulations! You are now ready to use your HP PSC. Select the **HP Director** icon in the dock to get started. If you encounter problems during setup, see the **Reference Guide**.