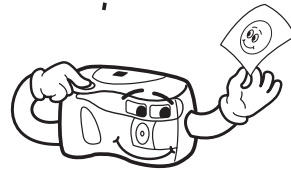
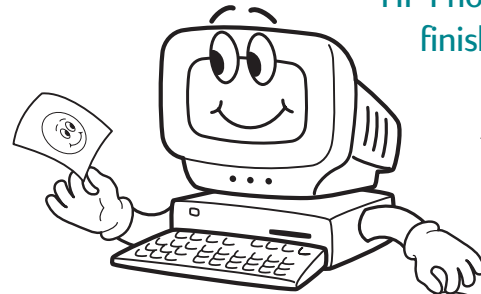


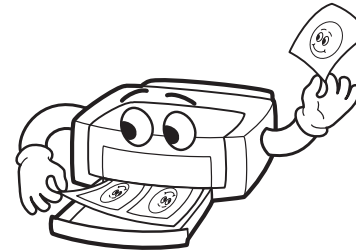
~~Photo~~Smart

HP PhotoSmart photo finishing software



HP PhotoSmart C30 digital camera

Your printer



# Photo Finishing Software

## User's Guide

© Copyright 1998 Hewlett-Packard Company

All rights are reserved. No part of this document may be photocopied, reproduced, or translated to another language without the prior written consent of Hewlett-Packard Company.

The information contained in this document is subject to change without notice. Hewlett-Packard shall not be liable for errors contained herein or for consequential damages in connection with the furnishing, performance, or use of this material.

HP, the HP logo, PhotoSmart, and the PhotoSmart logo are property of Hewlett-Packard Company.

Portions of the software are copyright © LEAD Technologies, Inc. 1991-1997. ALL RIGHTS RESERVED.

Kodak, FlashPix, and Photo CD are trademarks of Eastman Kodak Company.

Microsoft and Windows are registered trademarks and Picture It! is a trademark of Microsoft Corporation.

**Note:** This version of the HP PhotoSmart photo finishing software works only with the HP PhotoSmart C20 and C30 digital cameras. This version does **not** work with either the HP PhotoSmart photo scanner or the previous HP PhotoSmart digital camera.





---

# Contents

## Chapter 1 Introduction

System Requirements .....	6
Installing the Software .....	7
Running the Software .....	7
Automatically .....	7
Manually .....	8
Getting to Know Your HP PhotoSmart Software .....	10
The Tool Palette .....	10
The Gallery .....	13
The Status Bar .....	13
What's Next? .....	14

## Chapter 2 Using Your HP PhotoSmart Software

Getting Images into the Software .....	15
Getting Images from an HP PhotoSmart Digital Camera .....	16
Auto Detection Method .....	17

Get Images Method .....	18
Getting Images from a CompactFlash Memory Card .....	20
Auto Detection Method .....	21
Get Images Method .....	22
Getting Images from Files .....	24
Selecting Images .....	26
Using All of the Images .....	27
Using Only Certain Images .....	27
Doing Other Tasks in the Select View .....	28
Showing All or Only Selected Images .....	29
Selecting or De-Selecting All Images .....	30
Removing Images .....	31
Rotating an Image .....	33
Rearranging Images .....	33
Displaying Image Properties .....	34
Adjusting Images .....	34
Getting to Know the Adjust View .....	34
The Exposure Tools and Color Tools .....	35
The Preview Area and Selected Images Gallery .....	38
The Other Tools in the Preview Area .....	39
Adjusting the Exposure .....	40

Adjusting the Sharpness .....	42
Adjusting the Color .....	43
Adjusting the Color .....	44
Adjusting the Saturation .....	45
Changing the Orientation .....	46
Mirroring the Image .....	46
Rotating the Image .....	47
Cropping the Image .....	48
Changing the Orientation of the Crop Box .....	50
Doing Constrained and Unconstrained Crops .....	51
Changing the Output Size .....	52
Adding or Changing a Caption .....	53
Saving or Exporting Images .....	54
Saving Images to Files .....	54
Changing the File Name .....	55
Saving the Selected Images to Files .....	56
Exporting Images to Another Program .....	58
Exporting to a Program which Does <b>Not</b> Support TWAIN .....	58
Exporting to a Program which Supports TWAIN .....	60
Printing Images .....	62
Getting to Know the Print View .....	62

Setting Up and Printing Images .....	64
What's Next? .....	67
<b>Chapter 3 Getting Help with Your Software</b>	
Accessing the HP PhotoSmart Web Site .....	69
Viewing Online Help .....	70
Contacting HP Customer Care .....	72
<b>Chapter 4 Setting HP PhotoSmart Properties</b>	
Opening the HP PhotoSmart Properties Dialog Box .....	75
Getting to Know the Properties Dialog Box .....	76
Using the Properties Dialog Box .....	77
<b>Chapter 5 Using the Camera Control</b>	
Opening the Camera Control Window .....	79
Getting to Know the Camera Control Window .....	80
Using the Camera Control Window .....	81



---

# Chapter 1

# Introduction

Welcome to the HP PhotoSmart Photo Finishing Software User's Guide. The HP PhotoSmart photo finishing software helps you process photographic images on your PC at home, just like you were a professional photo finisher! And using the HP PhotoSmart software is as easy as 1 - 2 - 3...

First, the software lets you get photographic images quickly from either an HP PhotoSmart C30 digital camera, a CompactFlash memory card, or image files. Next, the HP PhotoSmart software lets you adjust your images easily, including:

- Correcting the exposure, sharpness, or color of the images
- Cropping the parts you want to use
- Rotating, reducing, or enlarging the images

Finally, the HP PhotoSmart software lets you send your finished images to a printer, files, or other software programs so that you can use them in any way you wish. For example, you can place your printed images into a photo album, publish online images on your Web site, or use your images in other creative printing projects like calendars, greeting cards, or invitations.

With your HP PhotoSmart software, you get the professional-quality photographic images you want right at home, as easy as 1 - 2 - 3!

## System Requirements

The HP PhotoSmart photo finishing software works on PCs running Microsoft® Windows® 95, Windows 98, or Windows NT 4.0 (with Service Pack 3 or later). Specific requirements are as follows:

Component	Minimum	Recommended
Processor	486-66 MHz	Pentium 100 or better*
RAM	16 MB	32 MB or more*
Free hard disk space	100 MB	120 MB
Software install size	10 MB	10 MB
Monitor/video	640 x 480, 256 colors	800 x 600 or more, 16-bit color
CD-ROM	Double-speed	Quad-speed (4x) or better
Serial port	Available 9-pin serial port for connection to the digital camera 25-pin serial port requires additional connector	
Sound card	Not required	16-bit or better
Mouse		

\* Minimum requirement for Windows NT 4.0

## Installing the Software

You install the HP PhotoSmart photo finishing software from the HP PhotoSmart CD that came with your HP PhotoSmart digital camera. For instructions on installing the software, please see the HP PhotoSmart C30 Digital Camera Basics guide.

## Running the Software

Once you've installed it on your PC, the HP PhotoSmart photo finishing software either runs automatically for you, or you can run it yourself manually.


### Automatically

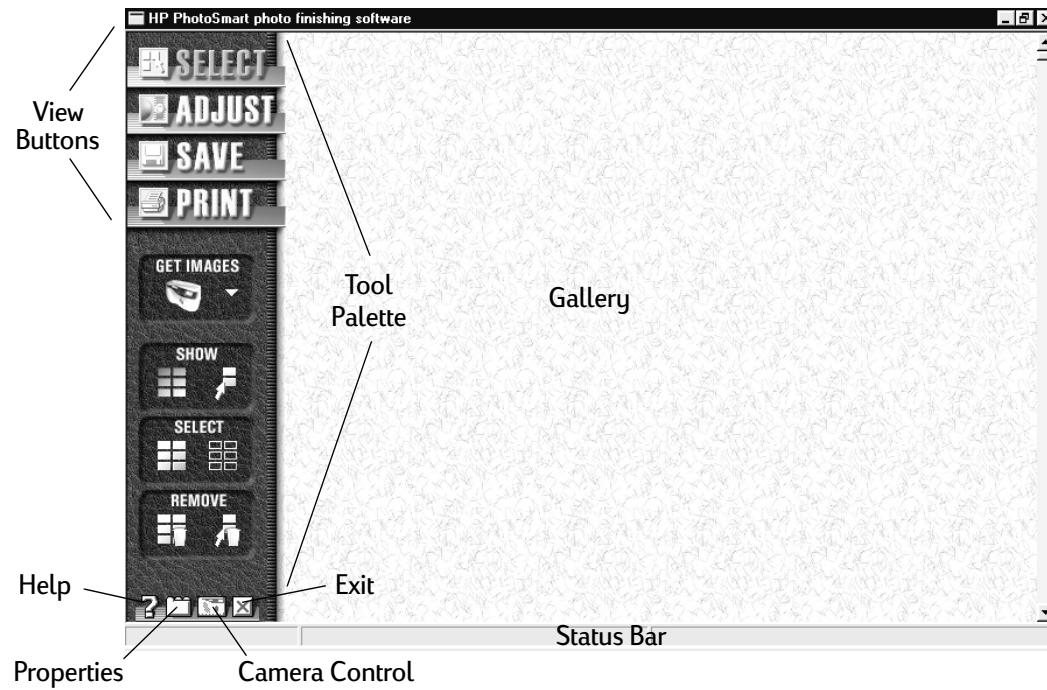
The software may run automatically when you connect your HP PhotoSmart digital camera to your PC (see page 16), or when you insert a CompactFlash memory card into your PCMCIA adapter (see page 20). If so, you see the HP PhotoSmart welcome window appear on your computer screen. Then the HP PhotoSmart software window is displayed, and thumbnails of your images are loaded from the digital camera or memory card into the software window.

**Note:** If you are using Windows NT 4.0, the software does not automatically detect the camera. Start the software manually as described on the following page.

## Manually

You can also run the software manually any time you want to work with images from either your HP PhotoSmart digital camera, a CompactFlash memory card, or image files:

1. Click the **Start** button in the Windows taskbar. 
2. From the **Start** pop-up menu, select **Programs > HP PhotoSmart > Photo Finishing Software**.



You see the HP PhotoSmart welcome window appear on your computer screen. Then the HP PhotoSmart software window is displayed.

# Getting to Know Your HP PhotoSmart Software

When the HP PhotoSmart software first opens, you are in the Select view. The software window in the Select view consists of several standard areas and buttons as shown:

**Note:** Depending on your screen size and resolution setting the software window may be smaller so that you only see the **Select View** button displayed in the Tool Palette. If you click on **Select**, a drop-down menu is displayed that lists the other **View** buttons.

## The Tool Palette

The Tool Palette has several standard buttons: the **View** buttons, as well as the **Help**, **Properties**, **Camera Control**, and **Exit** buttons. The following subsections describe these standard buttons.

**Tip:** To identify any button in the HP PhotoSmart software window, simply move your mouse pointer over that button (without clicking either mouse button). A ToolTip appears which briefly explains that particular button. For more details, keep your mouse pointer over the button and then click your right mouse button.

## View Buttons

At the top of the Tool Palette, there are four buttons that let you go to four different views of your photographic images. Each view has special software features that allow you to work with your images in particular ways. The four **View** buttons and their associated views are:



The Select view lets you bring photographic images into the HP PhotoSmart software and then lets you select the images you want to use. This view is where you start when the HP PhotoSmart software window first opens.



The Adjust view lets you adjust the images you have selected. For example, you can adjust the exposure, sharpness, or color of your images in this view.



The Save view lets you save your images in files or export your images to other programs.



The Print view lets you print your images.

**Note:** The following four buttons (**Help**, **Properties**, **Camera Control**, and **Exit**) are located at the bottom of the Tool Palette.

## Help Button



This button opens the **Help Topics** dialog box, where you can access online Help information for the HP PhotoSmart software and digital camera.

**Note:** To use the online Help, see page 70 in this guide.

## Properties Button



This button opens the **HP PhotoSmart Properties** dialog box, where you can set properties for the HP PhotoSmart software or digital camera. For example, you can set the temporary folder where you want the software to save your images in files.

**Note:** To set properties for either the HP PhotoSmart software or digital camera, see Chapter 4 starting on page 75 in this guide.

## Camera Control Button



This button opens the **Camera Control** window. If your HP PhotoSmart digital camera is connected to your PC, you can use the **Camera Control** window to delete images from your camera, or change the lock status of the images stored in your camera.

**Note:** To use the **Camera Control** window, see Chapter 5 starting on page 79 in this guide.



## Exit Button



This button exits the HP PhotoSmart photo finishing software. Use this button to close the software window when you are finished using the HP PhotoSmart software.

## The Gallery

The Gallery is where your images appear in the Select view of the HP PhotoSmart software. If the software was run automatically for you, you now see thumbnails of your images displayed here.

## The Status Bar

The Status Bar at the bottom of the software window displays important information about the current status of the HP PhotoSmart software. The Status Bar has the following three fields:

- The **Disk Space Available** field lists how much storage space is available on your PC's hard disk drive (for example, 34 MB available on drive C:).

- The **Selected** field lists the following information, depending on which view you are in:
  - In the Select, Adjust, and Save views, this field lists the number of images currently selected, as well as the total number of images (for example, Selected 5 of 22 images).
  - In the Print view, this field displays the number of the current page, as well as the total number of pages for printing (for example, Page 1 of 4).
- When applicable, the **Loading** field lists the image currently being loaded from the HP PhotoSmart digital camera or CompactFlash memory card into the HP PhotoSmart software window, as well as the total number of images which will be loaded (for example, Loading 3 of 10).

## What's Next?

Now that you are familiar with the standard areas and buttons in the HP PhotoSmart software window, you are ready to start using the software. Go on to the next chapter to learn how to use the HP PhotoSmart software for your photo finishing projects.

**Note:** If you ever need help while using the HP PhotoSmart software, see Chapter 3 starting on page 69 in this guide. Chapter 3 explains how to access the HP PhotoSmart Web site, view the online Help, and get technical support from Hewlett-Packard Company for your HP PhotoSmart software.

In addition, if you come across a particular term in this guide that you don't understand, please refer to the Glossary of definitions starting on page 83.

---

## Chapter 2

# Using Your HP PhotoSmart Software

Your HP PhotoSmart photo finishing software is easy to learn and use. This chapter steps you through the simple process of using the software for photo finishing, including:

- Getting images into the HP PhotoSmart software from either an HP PhotoSmart digital camera, CompactFlash memory card, or image files
- Selecting images to work with in the HP PhotoSmart software
- Adjusting the selected images with the HP PhotoSmart software, such as adjusting the exposure, sharpness, and color of the images
- Saving the finished images to files, or exporting the images to other software programs
- Printing the finished images on your printer

As you will see, using the HP PhotoSmart software for photo finishing is as easy as 1 - 2 - 3!

## Getting Images into the Software

The HP PhotoSmart photo finishing software lets you get photographic images from either an HP PhotoSmart digital camera (see below), a CompactFlash memory card (see page 20), or image files (see page 24).

## Getting Images from an HP PhotoSmart Digital Camera

There are two methods for getting images from an HP PhotoSmart digital camera:

- Auto Detection method -- The HP PhotoSmart software is originally set to auto detect your digital camera when you connect the camera to your PC. When your connected camera is auto detected, the HP PhotoSmart software automatically runs and loads thumbnails of the images from your digital camera.

**Note:** In Windows NT, the software does not automatically detect the camera. Use the “Get Images Method” on page 18 to view and download files from the digital camera.

If you are using a PCMCIA adapter to retrieve images directly from the CompactFlash memory card, use the “Get Images Method” on page 22.

- Get Images method -- You can turn off auto detection of the digital camera in the **Properties** sheet for the HP PhotoSmart digital camera. In this case, you must use the **Get Images** control within the HP PhotoSmart software to get the images from your digital camera.

The following subsections explain each of these methods for getting images from a digital camera. For information on how to set Properties like auto detection for your HP PhotoSmart digital camera, see Chapter 4 starting on page 75.

## Auto Detection Method

To get images from your HP PhotoSmart digital camera, connect your camera to the serial port on the back of your PC using the serial cable provided with the camera. Then connect the camera to a wall outlet using the AC power adapter cable. (For specific instructions, see your HP PhotoSmart C30 Digital Camera Basics guide.) When you have connected the digital camera to your PC and to a power outlet, turn on your camera by opening its lens cover.

Once the digital camera is auto detected, the HP PhotoSmart software runs automatically. It then loads thumbnails of the images that are stored in your camera, placing the thumbnail images in the Gallery of the HP PhotoSmart software window.

At first you will see a red diamond in the upper left-hand corner of each thumbnail image, which indicates that only a preview copy of the image has been loaded. Once all the preview copies are loaded, the full copies are then loaded, and the red diamonds disappear.

**Note:** The HP PhotoSmart software loads **copies** of the images from your digital camera. So until you delete the images from the camera itself, the original images are still stored in your digital camera.

**Tip:** While your HP PhotoSmart digital camera is connected to your PC, you can use the **Camera Control** window to delete images from your camera, or to change the lock status of the images stored in your camera. For information on how to do this, see Chapter 5 starting on page 79 in this guide.

When the thumbnails of all the images appear in the Gallery, you are ready to start working with your images. Go on to “Selecting Images” on page 26.

## Get Images Method

To get images from your HP PhotoSmart digital camera, connect your camera to the serial port on the back of your PC using the serial cable provided with the camera. Then connect the camera to a wall outlet using the AC power adapter cable. (For specific instructions, see your HP PhotoSmart C30 Digital Camera Basics guide.) When you have connected the digital camera to your PC and to a power outlet, turn on your camera by opening its lens cover.

If auto detection of your digital camera is turned off, or if you are using Windows NT 4.0, the HP PhotoSmart software will **not** run automatically when you have connected your digital camera to the PC. In this case, follow these steps to get the images from your digital camera:

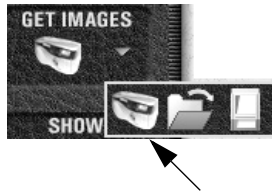
1. Run the HP PhotoSmart software manually, as explained on page 7 of this guide.
2. In the Tool Palette of the Select view, click the **Choose Image Source** button (the down-arrow in the **Get Images** control):



The **Get Images** flyout menu appears:



3. In the flyout menu, click the **Camera** icon:



The HP PhotoSmart software loads thumbnails of the images that are stored in your camera, placing the thumbnail images in the Gallery of the HP PhotoSmart software window.

At first you will see a red diamond in the upper left-hand corner of each thumbnail image, which indicates that only a preview copy of the image has been loaded. Once all the preview copies are loaded, the full copies are then loaded, and the red diamonds disappear.

**Note:** The HP PhotoSmart software loads **copies** of the images from your digital camera. So until you delete the images from the camera itself, the original images are still stored in your digital camera.

**Tip:** While your HP PhotoSmart digital camera is connected to your PC, you can use the **Camera Control** window to delete images from your camera, or to change the lock status of the images stored in your camera. For information on how to do this, see Chapter 5 starting on page 79 in this guide.

When the thumbnails of all the images appear in the Gallery, you are ready to start working with your images. Go on to “Selecting Images” on page 26.

## Getting Images from a CompactFlash Memory Card

There are two methods for getting images from a CompactFlash memory card:

- Auto Detection method -- The HP PhotoSmart software is originally set to auto detect a CompactFlash memory card when you insert it into a PCMCIA adapter that is connected to your PC. When the memory card is auto detected, the HP PhotoSmart software automatically runs and loads thumbnails of the images from the memory card.
- Get Images method -- You can turn off auto detection of the CompactFlash memory card in the **Properties** sheet for the C30 digital camera. In this case, you must use the **Get Images** control within the HP PhotoSmart software to get the images from the memory card.

The following subsections explain each of these methods for getting images from a CompactFlash memory card. For information on how to set Properties like auto detection for a CompactFlash memory card, see Chapter 4 starting on page 75.



## Auto Detection Method

To get images from a CompactFlash memory card, insert the memory card into the PCMCIA adapter that is connected to your PC. (For specific instructions, refer to the documentation provided with your memory card and PCMCIA adapter.)

Once your PC recognizes the CompactFlash memory card, the HP PhotoSmart software runs automatically. It then loads thumbnails of the images that are stored on your memory card, placing the thumbnail images in the Gallery of the HP PhotoSmart software window.

**Note:** The HP PhotoSmart photo finishing software loads **copies** of the images from your CompactFlash memory card. So until you delete the images from the memory card itself, the original images are still stored on your memory card.

When the thumbnails of the images appear in the Gallery, you are ready to start working with your images. Go on to “Selecting Images” on page 26.

## Get Images Method

To get images from a CompactFlash memory card, insert the memory card into the PCMCIA adapter that is connected to your PC. (For specific instructions, refer to the documentation provided with your memory card and PCMCIA adapter.)

If auto detection of the CompactFlash memory card is turned off, the HP PhotoSmart software will **not** run automatically when you have inserted the memory card into the PCMCIA adapter. In this case, follow these steps to get the images from your CompactFlash memory card:

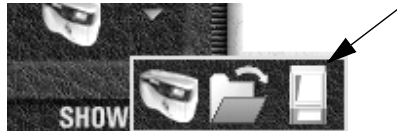
1. Run the HP PhotoSmart software manually, as explained on page 7 of this guide.
2. In the Tool Palette of the Select view, click the **Choose Image Source** button (the down-arrow in the **Get Images** control):



The **Get Images** flyout menu appears:



3. In the flyout menu, click the **Compact Flash Memory Card** icon:



The **Open** dialog box appears.

4. From the **Look in:** drop-down list of the **Open** dialog box, choose the drive for your PCMCIA adapter.

All the images that are stored on your CompactFlash memory card are displayed as files.

5. In the **Open** dialog box, choose the file name of an image you want to load from your memory card. If you wish to choose several image files from the memory card, press the **Ctrl** key on your keyboard while you click on the other file names.
6. Click the **Open** button.

The HP PhotoSmart software loads thumbnails of the images that are stored on your memory card, placing the thumbnail images in the Gallery of the HP PhotoSmart software window.

**Note:** The HP PhotoSmart photo finishing software loads **copies** of the images from your CompactFlash memory card. So until you delete the images from the memory card itself, the original images are still stored on your memory card.

When the thumbnails of the images appear in the Gallery, you are ready to start working with your images. Go on to “Selecting Images” on page 26.

## Getting Images from Files

**Note:** The HP PhotoSmart software can get images from image files that have these file types (or formats): Windows Bitmap (.bmp), FlashPix (.fpx), JPEG (.jpg), and TIFF (.tif).

To get images from files, do the following:

1. Run the HP PhotoSmart software manually, as explained on page 7 of this guide.
2. In the Tool Palette of the Select view, click the **Choose Image Source** button (the down-arrow in the **Get Images** control):



The **Get Images** flyout menu appears:



3. In the flyout menu, click the **Files** icon:



The **Open** dialog box appears.

4. From the **Look in:** drop-down list of the **Open** dialog box, choose the folder where the image file resides.

All the files in this folder are displayed.

5. Choose the name of a file containing an image that you want to get. If you wish to choose several image files from this same folder, press the **Ctrl** key on your keyboard while you click on the other file names.
6. Click the **Open** button.

The HP PhotoSmart software gets the image(s) from the file(s) you chose, placing each image as a thumbnail in the Gallery of the HP PhotoSmart software window.

**Note:** The HP PhotoSmart photo finishing software gets a **copy** of the image from the file. So until you delete or overwrite the file itself, the original image is still stored in that file.

To get more images from files in other folders, simply click the **Get Images** button in the Tool Palette and then repeat steps 4 through 6.



When you have obtained all the images that you want to use at this time, you are ready to start working with your images.

## Selecting Images

Now that your images are displayed as thumbnails in the Gallery, you can select the ones you wish to adjust, save, or print with the HP PhotoSmart photo finishing software.

The tools for selecting images should still be displayed in the Tool Palette. This is because you were initially placed in the Select view when the software window first opened. However, if you are in another view (that is, either **Adjust**, **Save**, or **Print** in the Tool Palette is currently selected), click **Select** now to return to the Select view.

It is important to know that all images are brought into the HP PhotoSmart software as **selected**. (You can tell that a thumbnail image is selected because it has highlight around it.) So you first have to decide which images you want to leave selected, and which of them you do not.

## Using All of the Images

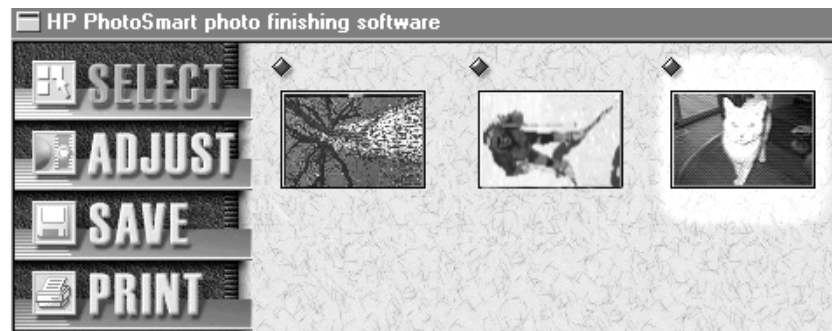
If you would like to work with all of the images that are now displayed in the Gallery -- great! You needn't do anything, since all the thumbnails of the images are already selected for you.

You can now adjust, save, or print all of the selected images. If you wish, skip ahead to the appropriate section later in this chapter for the task you want to do next. Or, if you want to learn more about the Select view now, go on to "Doing Other Tasks in the Select View" on page 28.

## Using Only Certain Images

If you want to work with only one or a few of the images though, you must de-select any thumbnails of the images that you do not wish to work with at this time. Simply click each thumbnail image that you do **not** wish to use. Each thumbnail that you click is unhighlighted, showing that the image is now de-selected.

For example, the following screen shows that the first two thumbnails were de-selected. The third thumbnail has a highlight around it, showing that it is still selected.



**Tip:** If you de-select an image by mistake, click its thumbnail again to select it.

**Tip:** Double-clicking on a thumbnail image is a shortcut to the Adjust view. The Adjust view is then opened, and the image that you double-clicked on is displayed as the large image in the Adjust view. To return to the previous view (such as the Select view), click that **View** button in the Tool Palette.

## Doing Other Tasks in the Select View

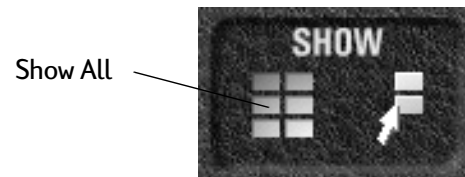
There are many other tasks you can do while in the Select view, as described in the following subsections. If you wish, read on and try these other Select view tasks. However, if you want to adjust, save, or print your selected images now, skip ahead to the appropriate section later in this chapter for the task you want to do next.



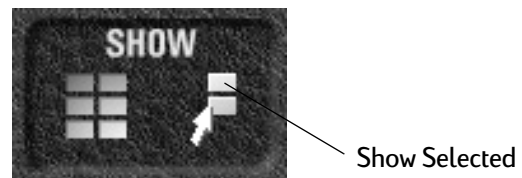
## Showing All or Only Selected Images

You can choose to have either all of the thumbnail images, or only the selected thumbnail images, displayed in the Gallery of the Select view.

To have all of the thumbnail images displayed, click the **Show All** button in the Tool Palette:

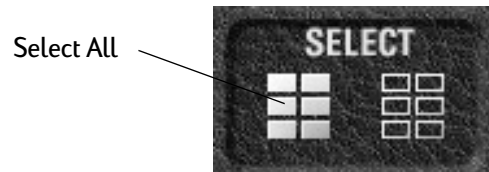


To display only those thumbnail images which are selected, click the **Show Selected** button:

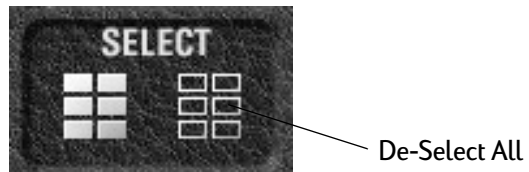


## Selecting or De-Selecting All Images

If you ever need to select all of the thumbnail images in the Gallery, click the **Select All** button in the Tool Palette:



Alternatively, you can de-select all of the thumbnail images in the Gallery by clicking the **De-Select All** button:



## Removing Images

**Caution:** The following actions will remove the image(s) from the Gallery and from the temporary computer storage associated with the Gallery. Therefore, be sure you do not need the image(s) any more before removing the image(s).

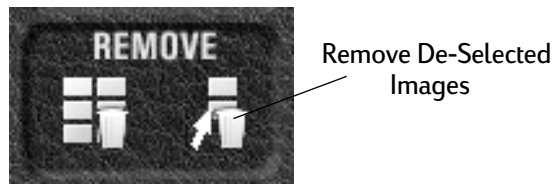
**Note:** The following actions will **not**, however, delete the image(s) stored in an HP PhotoSmart C30 digital camera, a CompactFlash memory card, or image file. (Loading or getting the images earlier from your digital camera, memory card, or image file did **not** delete the original images from the digital camera, memory card, or file itself. Therefore, if need be, you can always load or get the same images again.)

To remove all of the thumbnail images in the Gallery, click the **Remove All Images** button in the Tool Palette:

Remove All  
Images



Similarly, you can close just the thumbnail images that are currently de-selected in the Gallery. To do this, first make sure that all of the thumbnail images you wish to close are de-selected (that is, they are **not** highlighted in the Gallery). Remember that to de-select a currently selected thumbnail, simply click it again. Then click the **Remove De-Selected Images** button in the Tool Palette:

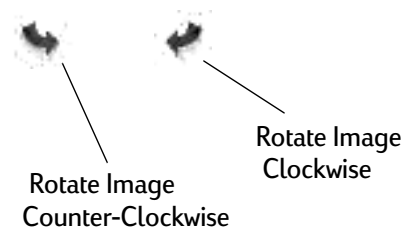


You can also remove a particular thumbnail image in the Gallery. To do this, move your mouse pointer over the thumbnail, then click the **Remove Image** button (the **X** button) that appears in the upper right-hand corner of the thumbnail frame:



## Rotating an Image

You can change the orientation of an image by rotating it either counter-clockwise or clockwise in 90 degree increments. To do this, move your mouse pointer over the thumbnail of the image, then click either the **Rotate Image Counter-Clockwise** button or the **Rotate Image Clockwise** button in the bottom of the thumbnail frame:



## Rearranging Images

You can arrange the thumbnail images in the Gallery in any order you wish. Simply drag each thumbnail around with your mouse, and then drop it in the Gallery wherever you want to place it.

That thumbnail is placed where you dropped it, and all the other thumbnail images are rearranged accordingly.

## Displaying Image Properties

You can also display information about a particular image, such as its original size, source (C30 digital camera, CompactFlash memory card, or image file), and so forth. To do this, move your mouse pointer over the image's thumbnail and then click your right mouse button.

A properties dialog box appears for the image. Once you have read the information about this image, close the dialog box by clicking either the **Close** button (the **X** button in the top right-hand corner), or the **OK** button.

## Adjusting Images

Now that you have selected the images you want to work with, you can adjust them to your liking. This section explains how to use the HP PhotoSmart software to adjust the exposure, sharpness, color, orientation, crop, output size, and caption of your images.

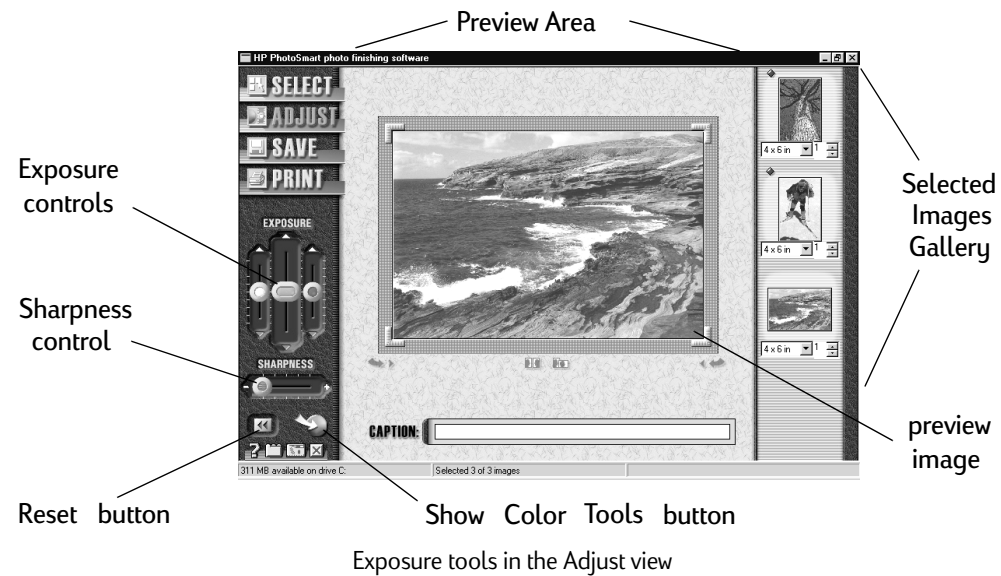
To do these tasks, you must be in the Adjust view. So if you're not already there, click **Adjust** in the Tool Palette to go to the Adjust view now.

## Getting to Know the Adjust View

The Adjust view provides specialized tools and screen areas that you can use to adjust your images. Take a few moments to read the following subsections to familiarize yourself with the tools and screen areas in the Adjust view.

## The Exposure Tools and Color Tools

The Adjust view's Tool Palette has exposure tools and color tools. As shown on the next page, the Tool Palette displays the exposure tools when you first enter the Adjust view. You can use the exposure tools to adjust the exposure and sharpness of your images.



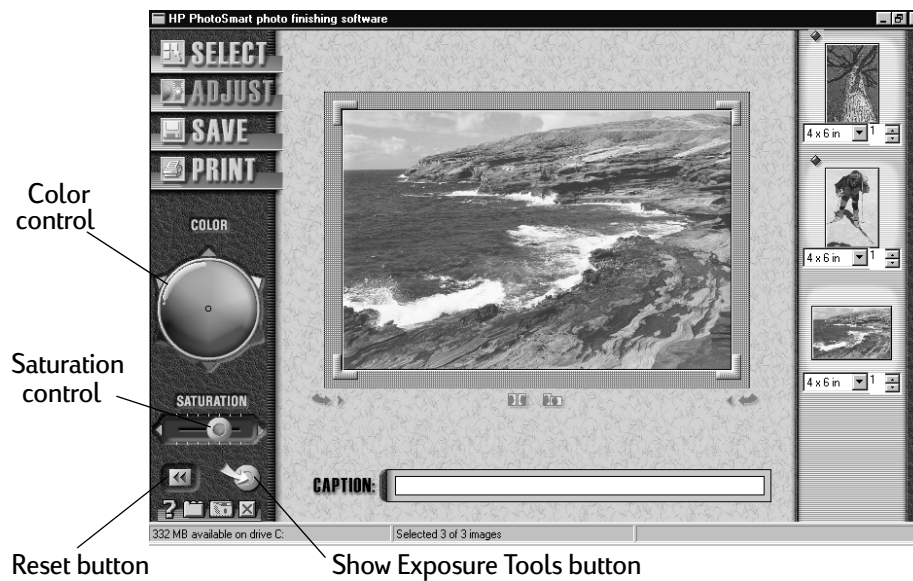
To go to the color tools, click the **Show Color Tools** button in the Tool Palette:



The Tool Palette changes to display the color tools.

The following screen shows the color tools in the Tool Palette of the Adjust view. You can use the color tools to adjust the color and saturation of your images.





Color control

Saturation control

Reset button

Show Exposure Tools button

Color tools in the Adjust view

To return to the exposure tools, click the **Show Exposure Tools** button in the Tool Palette:



**Note:** There is a **Reset** button under both the exposure tools and the color tools in the Tool Palette. When the exposure tools are displayed, you can click the **Reset** button to reset the large (preview) image to its original exposure settings. Similarly, you can click the **Reset** button when the color tools are displayed to reset the preview image to its original color and saturation settings.

## The Preview Area and Selected Images Gallery

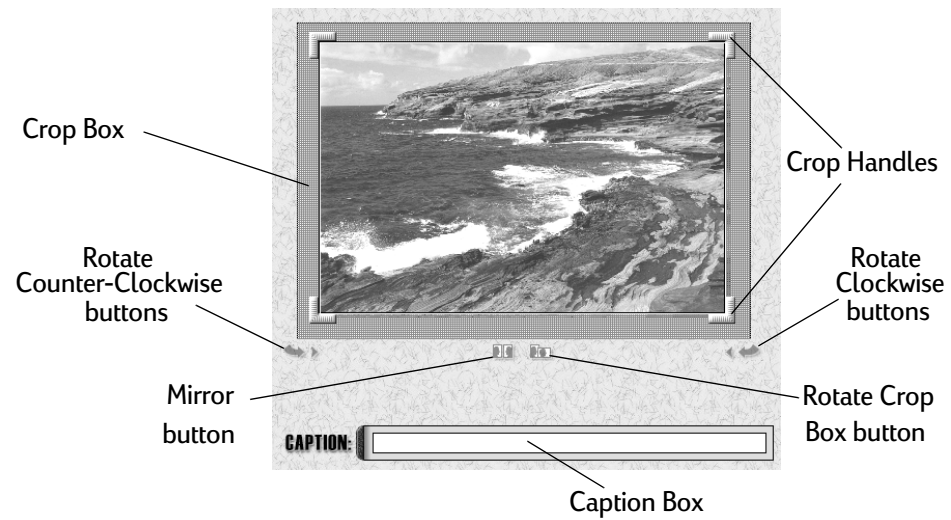
As the previous two example screens showed, you are presented with a Preview Area in the middle of the software window in the Adjust view. This Preview Area is where you can adjust one selected image at a time. When one of your selected images is displayed in this Preview Area, it is called the preview image.

All of your selected thumbnail images are displayed along the right edge of the Adjust view, which is called the Selected Images Gallery. To make one of the thumbnail images your preview image, click the thumbnail image in the Selected Images Gallery. The image you clicked becomes the new preview image displayed in the Preview Area. Whatever adjustments you make to the preview image will also be reflected in its corresponding thumbnail image in the Selected Images Gallery.

Under each thumbnail image in the Selected Images Gallery, there is also an output size for that image and a number of images to print. You can change the output size in the drop-down list, and the number of images with the arrow buttons. (As you will see, there are more ways to change the output size, as explained in “Changing the Output Size” on page 52.)

## The Other Tools in the Preview Area

There are also several tools in the Preview Area of the Adjust view that you can use to adjust the preview image. These tools are identified in the following screen:



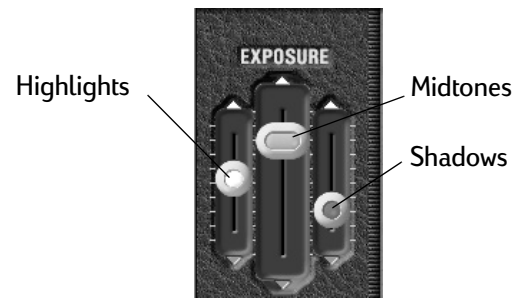
Other tools in the Preview Area of the Adjust view

Now that you are familiar with the different tools and areas of the Adjust view, you are ready to make adjustments to your images. The following subsections explain the various tasks you can do in the Adjust view, such as adjusting an image's exposure, color, and so on.

## Adjusting the Exposure

Exposure refers to the overall lightness or darkness of a photographic image. An image generally has light areas (highlights), dark areas (shadows), and areas in between (midtones).

In turn, the Tool Palette has three **Exposure** controls:



The **Exposure** controls do the following:

- The **Highlights** control adjusts the lightest parts of the image. Use this control to make the lightest parts of the image darker or lighter to gain the detail you want in the image.
- The **Midtones** control adjusts the overall brightness of the image. Use this control to adjust an image that is too dark or too light overall.
- The **Shadows** control adjusts the darkest parts of the image. Use this control to make the darkest parts of the image darker or lighter to gain the detail you want in the image.

Each **Exposure** control has a slider which allows you to change that control's exposure setting by dragging it up or down with your mouse. Therefore, to adjust the exposure of your preview image, use your mouse to drag the slider in each of the **Exposure** controls either up (increasing the exposure setting for that control), or down (decreasing it), as needed. Note that you can also click on the arrow above or below a slider to move it.

As you move each slider, the exposure of the preview image (and its corresponding thumbnail image in the Selected Images Gallery) changes accordingly.

**Tip:** When adjusting an image's exposure, it is best to proceed in the following order:

1. Adjust the midtones first. This changes the overall brightness of the image.
2. Adjust the highlights to show the right amount of detail in the lightest parts of the image.
3. Adjust the shadows to show the right amount of detail in the darkest parts of the image.

**Note:** The HP PhotoSmart software's exposure adjustments cannot correct all problems. If the original image was too poorly exposed, the image detail may not have been recorded, and the software adjustments cannot bring out details which are simply not there.

Remember that if you ever want to undo all of the exposure adjustments you have made to the preview image, click the **Reset** button in the Tool Palette. This will return the preview image to its original exposure settings.

## Adjusting the Sharpness

Sharpness refers to how hard or soft the detail appears within an image. For example, an image with an extremely sharp setting appears grainy or pixelated, whereas an image with a softer setting appears more muted or faded-back.

The **Sharpness** control has a slider which allows you to change the sharpness setting of the preview image:



To adjust the sharpness of your preview image, use your mouse to drag the slider in the **Sharpness** control either:

- To the left, which decreases the sharpness setting and makes the preview image appear softer
- To the right, which increases the sharpness setting and makes the preview image sharper

You can also click on either the minus sign on the left side of the slider, or the plus sign on right side of the slider, to move the slider one unit.

## Adjusting the Color

The HP PhotoSmart software lets you adjust the color and saturation of your images.

Color problems in photographic images usually involve one of the following:

- The image has too much of a single color (such as too much red or green).
- The image either does not have enough overall color (lacks saturation), or has too much overall color (is too saturated).

**Tip:** Problems with an image's exposure are often mistaken for color problems. Thus, you should adjust an image's exposure first before trying to adjust its color.

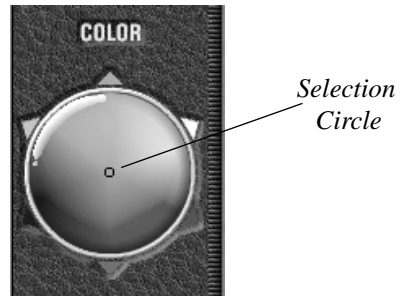
To adjust the color or saturation of your preview image, you must have the color tools displayed in the Tool Palette. So if the color tools are not displayed, click the **Show Color Tools** button in the Tool Palette now.



The following two subsections explain how to adjust the color and saturation in your images.

## Adjusting the Color

The **Color** control is displayed at the top of the Tool Palette:



Each point inside the **Color** control represents a specific color. When you first see the **Color** control, the software has placed the **Selection Circle** at the point in the control which indicates the average of all the colors in the preview image.

To adjust the color in your preview image, you can:

- Click one or more of the colored arrows to add more of the arrow's color to the image.
- Drag the **Selection Circle** to a new colored area within the control, or click inside the **Color** control to move the **Selection Circle** to that area, to change the mix of colors in the image.



Remember that if you ever want to undo all of the color and saturation adjustments you have made to the preview image, click the **Reset** button in the Tool Palette. This will return the preview image to its original color and saturation settings.

## Adjusting the Saturation

Saturation refers to the amount of color in an image. If the colors in an image are over-saturated, they look too bright. If the colors are under-saturated, however, they appear too gray. With no saturation, an image becomes a black and white image.

The **Saturation** control in the HP PhotoSmart software has a slider which allows you to change that control's saturation setting by dragging it to the left or right with your mouse:



To adjust the saturation of the preview image, use your mouse to drag the slider either to the left (decreasing the saturation value), or to the right (increasing it). You can also click on the arrow on either side of the slider to move it.

Setting the slider all the way to the left results in a black and white image (zero color saturation). Moving the slider all the way to the right creates a fully-saturated image.

**Tip:** You will generally get better results if you first decrease the saturation by one or two units on the left side of the slider. Then slowly move the slider to the right to gradually increase the saturation until you get the color saturation you want.

Remember that if you ever want to undo all of the color and saturation adjustments you have made to the preview image, click the **Reset** button in the Tool Palette. This will return the preview image to its original color and saturation settings.

## Changing the Orientation

The HP PhotoSmart software provides several tools in the Adjust view which you can use to change the orientation of your images. With these tools, you can mirror an image (flip the image from left to right), or rotate an image clockwise or counter-clockwise in either 90 degree increments, or in very small increments. These orientation tools are explained in the following subsections.

### Mirroring the Image

If you want to make a mirror-image of the preview image, click the **Mirror** button which is centered beneath the preview image:

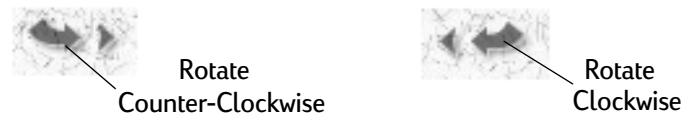


Clicking the **Mirror** button flips the image from left to right. To return the image to its original orientation, click the **Mirror** button again.

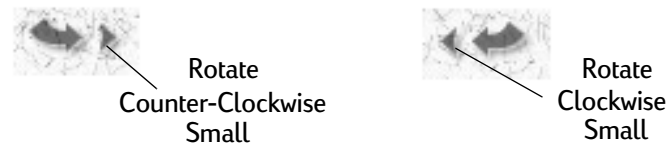
## Rotating the Image

The rotate tools in the Adjust view let you rotate an image either by 90 degree increments (quarter turns), or by small increments, clockwise and counter-clockwise.

To rotate the preview image by 90 degree increments, use either the **Rotate Counter-Clockwise** or the **Rotate Clockwise** button located beneath the preview image:



You can also rotate the preview image in much smaller increments with either the **Rotate Counter-Clockwise Small** or the **Rotate Clockwise Small** button shown below. These tools are particularly helpful if the preview image is slightly tilted.

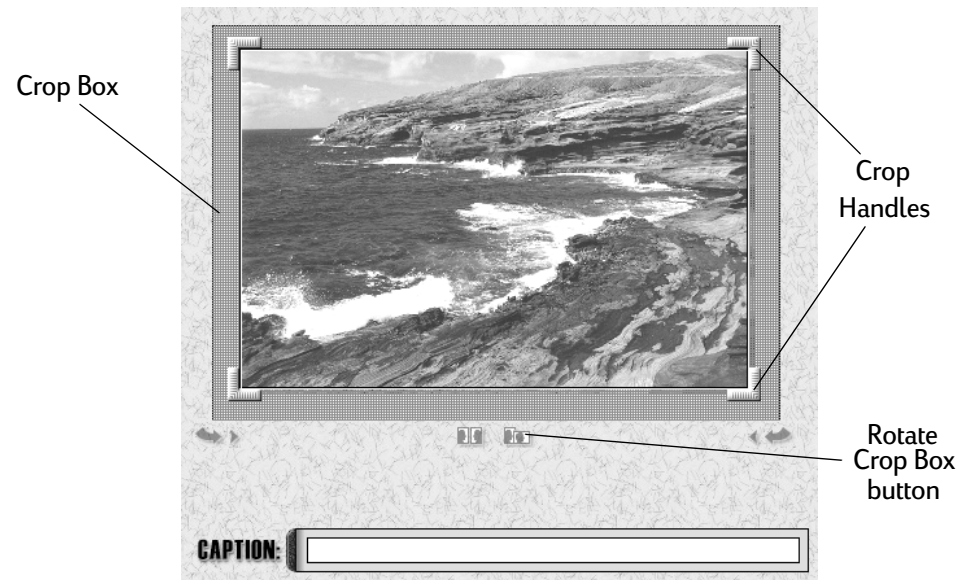


If you click a **Rotate Counter-Clockwise Small** or **Rotate Clockwise Small** button, the preview image is rotated (skewed) counter-clockwise or clockwise in small increments. This allows you to rotate the preview image slightly to straighten it, if needed.

## Cropping the Image

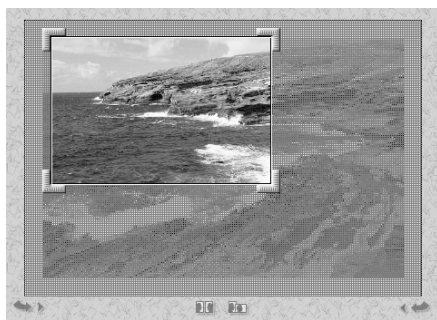
Cropping means to select the portion of an image that you want in the final image. For example, if you have an image of a person standing in a group of people, you can crop out all of the other people in the image, so that only that one person is in the final image. Cropping is especially helpful when there are elements in the image which you do not want to show.

The following screen shows the tools you can use to crop the preview image in the Adjust view:



Crop tools in the Adjust view

As shown below, the Adjust view contains a Crop Box, which is a resizable, rectangular box located directly over the preview image. The Crop Box contains the final portion of the image which will be printed, saved, or exported to another program. In turn, the Crop Box sets the proportions of the output size for your final image.



The Crop Box over the preview image at left, and the resulting final image on right

## Changing the Orientation of the Crop Box

You can change the orientation of the Crop Box itself with the **Rotate Crop Box** button, which is centered beneath the preview image. Click the **Rotate Crop Box** button to rotate the Crop Box in 90 degree increments (from horizontal to vertical, or vice versa) on the preview image:



## Doing Constrained and Unconstrained Crops

When the Crop Box is in the proper orientation (horizontal or vertical) over your preview image, you can then drag the Crop Handles to move the Crop Box and crop-out the portions of the preview image you don't want. There are two ways to crop an image:

- A constrained crop maintains the aspect ratio (proportions) of the desired output size.

To crop the preview image so that it maintains the same proportions as the output size, drag the Crop Handles, as needed, until the portion of the image inside the Crop Box is what you want in the final image.

- An unconstrained crop changes the aspect ratio (proportions) of the desired output size. This changes the output size of the preview image based on the relative change from the image's original output size.

To change the proportions of the final, cropped image, hold down the Ctrl key on your keyboard and drag the Crop Handles, as needed, until the portion of the image inside the Crop Box is what you want in the final image.

You can also move the re-sized Crop Box anywhere on your preview image. To do this, move the mouse pointer inside the re-sized Crop Box. The pointer changes to a four-pointed arrow. Now drag the entire, re-sized Crop Box to wherever you want it on the preview image.

**Tip:** If you crop-out too much of an image and then try to print the image at a large print size, you may be disappointed with the results. Excessive scaling can reduce the image's quality.

## Changing the Output Size

An output size is listed under each thumbnail image in the Selected Images Gallery of the Adjust view. If you open the **Output Sizes** drop-down list under a thumbnail image, you see that the HP PhotoSmart software provides the following sizes from which you can choose the output size for your image:

- Original size, which allows you to preserve the size and resolution of the original image
- Standard U.S. sizes in inches and/or standard metric sizes in millimeters and centimeters
- Standard pixel dimensions, which allow you to size an image that you will display on a computer screen, such as on a Web page

**Note:** Selecting a new, standard output size for an image may change the aspect ratio and, thus, the crop of that image.



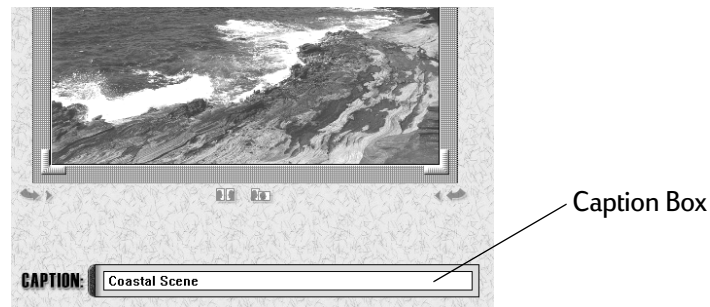
You can change the output size for an image by selecting a new size from those in the **Output Sizes** drop-down list.

However, if you wish to use an output size that is not in the drop-down list, you must first create a new standard size in the **HP PhotoSmart Properties** dialog box. (To do this, see Chapter 4 starting on page 75 in this guide.) Once you have created the new size in **Properties**, it will be added automatically to the **Output Sizes** drop-down list. Thus, you can select this new output size from the drop-down list for any of your thumbnail images.

Finally, if you do an unconstrained crop on an image (as explained on page 51), the aspect ratio and, therefore, the output size is changed for that image. The new size is only associated with the image for this particular software session, though -- this does **not** create a new standard output size in the **Output Sizes** drop-down list.

## Adding or Changing a Caption

A **Caption Box** is also located beneath the preview image:



To add a caption, click in the **Caption Box**, and then type in a caption for the preview image. When you print the image, the caption will be centered and will include line breaks as needed, given the size of the caption space on the print page for this image.

To change a caption, select the current caption, press the **Delete** key, and then type in a new caption.

## Saving or Exporting Images

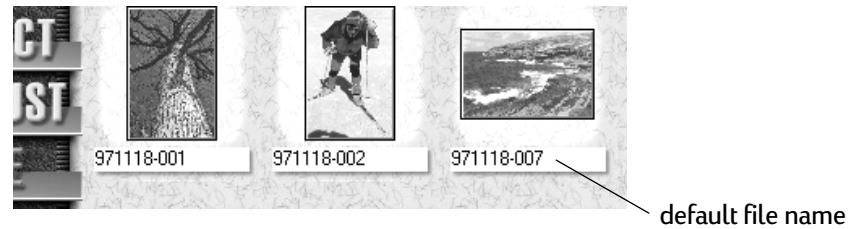
This section explains how to use the HP PhotoSmart software either to save selected images to files, or to export images to another software program.

You must be in the Save view to save or export your images. So if you're not already there, click **Save** in the Tool Palette to go to the Save view now.

### Saving Images to Files

**Note:** Files containing images can be very space-consuming. Therefore, be aware of the storage space required to save your images on your PC. If needed, you may have to either delete other files or move them to another medium (such as to a floppy disk) to free-up space on your PC to store new image files.

As you can see, the HP PhotoSmart software provides default file names for your selected images in the Save view. The default file name for each image is listed beneath each thumbnail image in the Gallery:



## Changing the File Name

If you would like to change the name of the file to which an image will be saved, do the following:

1. Drag your mouse pointer over the current file name listed beneath the thumbnail image.

The current file name is highlighted.

2. Type in the new file name you want.

The current file name is removed, and the new file name you've typed in is now displayed beneath the thumbnail image. Now when you save the image, it will be saved to this new file name.

Repeat the previous two steps to change the file name of each image in the Gallery, as desired.

## Saving the Selected Images to Files

**Note:** The HP PhotoSmart software saves all of the selected images in the Gallery to files in one folder in a single operation. So if you do not want to save a particular image to a file, or if you wish to save images to files in different folders, go back to the Select view now and select or de-select images, as appropriate, before following the procedures below. Once you have selected the images you wish to save to files in one folder, return to the Save view and follow the procedures below.

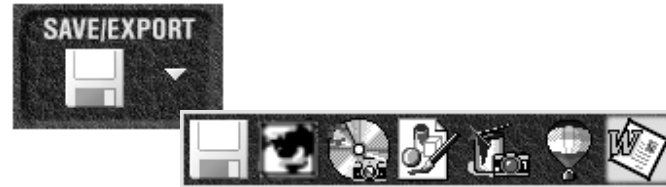
**Tip:** In the **HP PhotoSmart Properties** dialog box, you can change the default folder where images are saved. For information on how to do this, see Chapter 4 starting on page 75 in this guide.

To save all of your selected images to files in a particular folder:

1. In the Tool Palette, click the **Choose Destination** button (the down-arrow in the **Save/Export** control):



The **Save/Export** flyout menu appears:



2. In the flyout menu, click the **Files** icon:



The **Save to Folder** dialog box appears, which lists the default folder, drive, and file type (format) to which all of the selected images will be saved.

3. If you wish, in the **Save to Folder** dialog box, you can change the folder and/or the drive where your images will be saved. To do this, choose the folder from the **Folders:** window, and/or the drive from the **Drives:** drop-down list. Otherwise, go on to step 4.
4. If you wish, in the **Save to Folder** dialog box, you can also change the file type (format) to which your images will be saved. To do this, choose the file type from the **Save files as type:** drop-down list. The HP PhotoSmart software can save your images to either the Windows Bitmap (.bmp), FlashPix (.fpx), JPEG (.jpg), or TIFF (.tif) format. Otherwise, go on to step 5.

5. To save all of your selected images to the folder, drive, and file type listed in the **Save to Folder** dialog box, click the **OK** button.

Each of the selected images is saved to a file in that folder and/or drive in turn, with either the default file name (if you did not change the image's file name), or the file name you chose earlier for that image.

## Exporting Images to Another Program

This subsection explains how to export selected images from the HP PhotoSmart software to another program.

The actual procedures you follow to export images depends on whether the other program supports the TWAIN protocol, or not. If you are unsure, look for information on TWAIN support in either the table of contents or index of the documentation for your other program.

The following two subsections explain how to export images from the HP PhotoSmart software to another program which does **not** support the TWAIN protocol, and to another program which **does** support TWAIN. Follow the procedures in the subsection that applies to your other program.

### Exporting to a Program which Does **Not** Support TWAIN

If the other program does **not** support the TWAIN protocol, then you will need to initiate the export from within the HP PhotoSmart software itself. The HP PhotoSmart software will copy the image you choose to the clipboard, and then transfer the image from the clipboard to the other program.

**Note:** Programs which do not support TWAIN can only import one image at a time. Therefore, only the first selected image in the Gallery will be exported to the other program. If you want another image to be exported, go back to the Select view now and select only the image that you wish to export. (Deselect all the other images.) For information on how to select and deselect images, see “Using Only Certain Images” on page 27. Then return to the Save view and follow the procedures on the next page.

To export the first selected image in the Gallery to a program which does **not** support TWAIN, do the following:

1. Run the other program to which you want to export the image. The HP PhotoSmart software can only detect the other program if it is currently running on your PC.
2. If needed, open either an existing file or a new file within the other program to which you want the image exported.
3. In the Tool Palette of the Save view of the HP PhotoSmart software window, click the **Choose Destination** button (the down-arrow in the **Save/Export** control):



The **Save/Export** flyout menu appears, showing an icon for each possible destination program. For example:



4. In the flyout menu, click the icon for the program to which you want to export the selected image.  
The first image in the Gallery is exported to the other program and appears in the other program's window when the export is complete.

## Exporting to a Program which Supports TWAIN

If the other program supports the TWAIN protocol, then you can export selected images to that other program as follows:

1. If auto detection of the C30 digital camera is currently turned on, then turn it off in the **HP PhotoSmart Properties** dialog box. To do this:
  - Click the **Properties** button at the bottom of the Tool Palette.  
The **HP PhotoSmart Properties** dialog box opens.
  - Choose **C20/C30 Digital Camera** in the drop-down list at the top of the dialog box.  
The C30 digital camera **Properties** sheet of tabs is displayed.
  - On the **Status** tab, click the check box next to **Auto detect the camera** to remove the checkmark. This turns auto detection off.
  - Click **Apply** and then click **OK** at the bottom of the dialog box.
2. Exit the HP PhotoSmart software by clicking the **Exit** button at the bottom of the Tool Palette.



3. Run the other TWAIN-supported software program.
4. From the **File** or **Edit** menu in the other program, choose the appropriate command (such as **Acquire**) to import images from the HP PhotoSmart photo finishing software (the source).

The HP PhotoSmart software window opens, into which the images from the camera are loaded.

5. Once the images from the C30 digital camera have loaded into the HP PhotoSmart software window, select the images in the Gallery of the Select view that you wish to export to the other TWAIN-supported program.
6. Click **Save** to go to the Save view in the HP PhotoSmart software.
7. In the Save view, click the **Choose Destination** button (the down-arrow in the **Save/Export** control):



The **Save/Export** flyout menu appears, showing the icon for the other TWAIN-supported program.

8. In the flyout menu, click the icon for the other program to which you want to export the selected images.

If the other program supports the import of multiple images, all of the selected images will be exported from the HP PhotoSmart software to the other program. However, if the other program only supports the import of a single image at a time, then only the first image in the Gallery of the HP PhotoSmart software will be exported to the other program.

When the transfer is complete, the image(s) appear in the other program's window.

## Printing Images

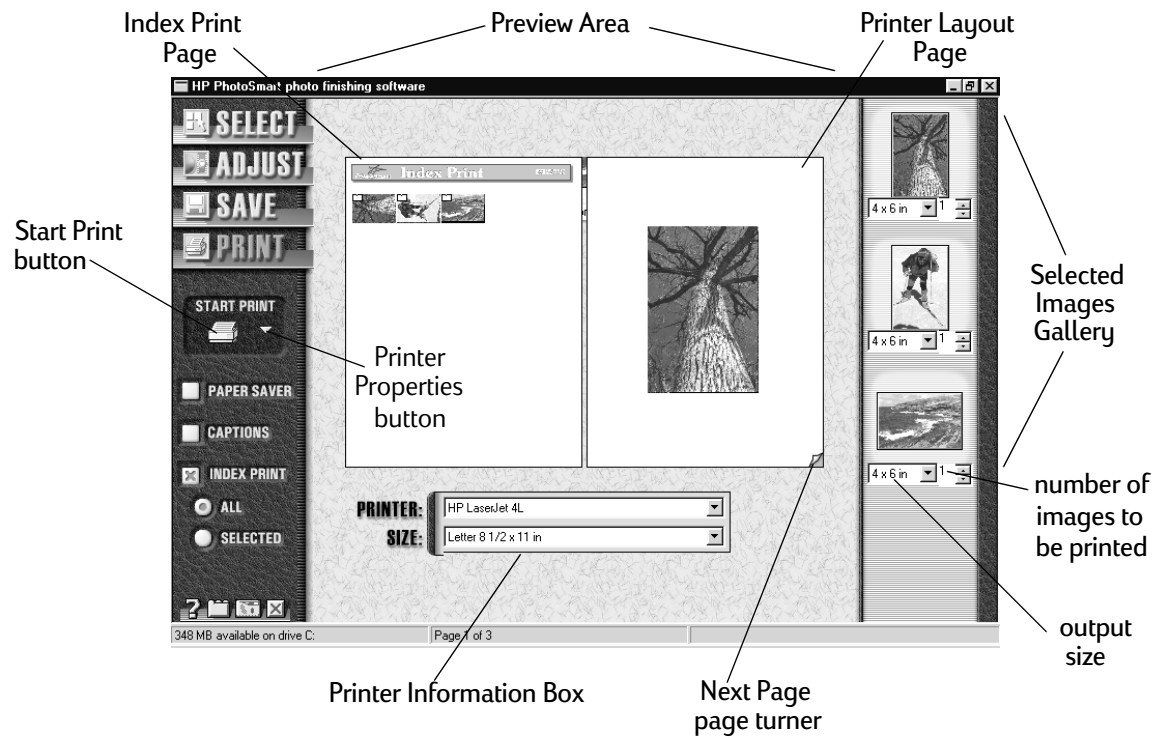
This section explains how to use the HP PhotoSmart software to print your selected images.

You must be in the Print view to print images. So if you're not already there, click **Print** in the Tool Palette to go to the Print view now.

### Getting to Know the Print View

The Print view lets you set up a print job while viewing how the selected images will be laid out on the printed page. The specialized tools and screen areas that you can use to set up and then print your images in the Print view are shown on the next page.

As you can see, the selected images are displayed as thumbnails in the Selected Images Gallery on the right edge of the Print view. In addition, the Preview Area in the center of the Print view shows an Index Print Page, as well as a Printer Layout Page. This Preview Area is updated as you make changes to the output sizes and number of images to print beneath each thumbnail image in the Selected Images Gallery.



Tools and screen areas in the Print view

## Setting Up and Printing Images

To set up and then print your selected images, do the following:

1. Under each thumbnail image in the Selected Images Gallery, change the output size for that image from the **Output Sizes** drop-down list, as needed.

**Note:** If you wish to use an output size that is not in the drop-down list, you must first create a new standard size in the **HP PhotoSmart Properties** dialog box. (See Chapter 4 starting on page 75 in this guide.) Once you have created the new size in **Properties**, it will be added automatically to the drop-down list of output sizes. Thus, you can select this new output size from the drop-down list for any of your thumbnail images.

The size of each image you change is reflected on the Printer Layout Page(s).

2. Similarly, change the number of images to print with the arrow buttons under each thumbnail image in the Selected Images Gallery, as needed. If you do not want to print an image, change the number of images to print to 0 (zero).

The number of images is reflected on the Printer Layout Page(s).

3. In the **Printer Information Box**, change the printer setting in the **Printer:** drop-down list if the default printer listed is not the printer you wish to use.
4. Similarly, change the size setting in the **Size:** drop-down list if the default page size listed is not the size you wish to use.

**Note:** If you wish to set a page size as the default which will always be used by the HP PhotoSmart software to print your images, click the **Printer Properties** button (the down-arrow in the **Start Print** control) in the Tool Palette. The **Printer Properties** dialog box is then displayed for the printer you selected. Choose the appropriate page size in the **Paper** tab, and then click **OK** at the bottom of the **Printer Properties** dialog box.

5. In the Tool Palette, click on the check boxes, as needed, to set the following for the print job:

- **Paper Saver** to have the software find a more efficient layout for the selected images. When checked, this will rotate and reorder all of the images on the Printer Layout Page(s) to make the most efficient use of the pages which will be printed.

If **Paper Saver** is not checked, the selected images will be printed without being rotated and reordered for increased efficiency of paper usage.

- **Captions** to have the captions for the selected images printed beneath the images.

If **Captions** is not checked, the selected images will be printed without their captions.

- **Index Print** to have the Index Print Page printed before printing the images on the Printer Layout Page(s). You also have the choice of printing an Index Print Page of all the images (click the **All** button), or only the selected images (click the **Selected** button).

If **Index Print** is not checked, only the Printer Layout Page(s) will be printed.

6. If there is more than one Printer Layout Page, and you wish to see all the Printer Layout Pages to preview all the images that will be printed, click the **Next Page** page turner at the bottom, right-hand corner of each Printer Layout Page.

This advances the Printer Layout Page to the next pair of pages.

To return to the previous Printer Layout Page(s), click the **Previous Page** page turner at the bottom, left-hand corner of each Printer Layout Page.

7. Once you are satisfied with all of the print settings in the Print view, click the **Start Print** button in the Tool Palette.

The print job is sent to your printer.

## What's Next?

You've now learned all the basics for using the HP PhotoSmart software for photo finishing. For more information on:

- Photo finishing tasks, look in the online Help. The online Help contains “how to” and reference information about the software, including some multimedia video clips that you can access from your HP PhotoSmart CD. To learn how to view the online Help, see page 70.
- Changing settings in the **HP PhotoSmart Properties** dialog box, see Chapter 4 starting on page 75.
- Using the **Camera Control** window for the HP PhotoSmart C30 digital camera, see Chapter 5 starting on page 79.

Also, if you ever need help with your HP PhotoSmart software, see the next chapter. Chapter 3 explains how to access the HP PhotoSmart Web site, as well as how to get technical support from Hewlett-Packard Company for your HP PhotoSmart photo finishing software.





---

## Chapter 3

## Getting Help with Your Software

The HP PhotoSmart photo finishing software is designed to be easy to use. When there is a problem, you have several resources for finding a solution.

This chapter explains how you can get help with your HP PhotoSmart photo finishing software, including:

- Accessing the HP PhotoSmart Web site for project ideas, troubleshooting assistance, and updated software
- Viewing the online Help for “how to” and reference information about the software
- Contacting Hewlett-Packard Company Customer Care for assistance with your software

### Accessing the HP PhotoSmart Web Site

You can get project ideas, troubleshooting assistance, and updated software from HP’s PhotoSmart Web site. For up-to-date information, check here first whenever you have a question about your HP PhotoSmart photo finishing software. The address is:

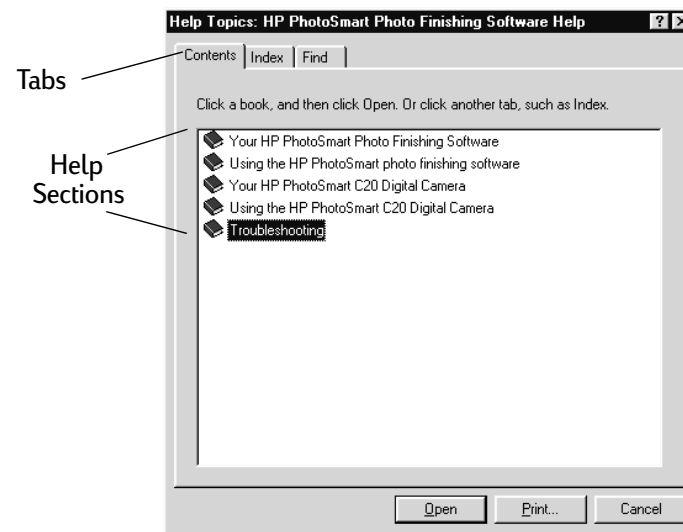
**<http://www.photosmart.com>**

## Viewing Online Help

The HP PhotoSmart photo finishing software comes with a complete online Help system. To view the online Help, click the **Help** button located at the bottom of the Tool Palette:



The **Help Topics** dialog box appears.



Help Topics dialog box

The online Help system provides information on all the various tasks you can perform with the HP PhotoSmart software. On the **Contents** tab, this “how to” and reference information is broken-down into numerous sections, which are designated as books. Simply double-click on a book to open that section, and then double-click on the Help topic you want.

You can also click on the other tabs to go to the online Help's **Index** and **Find** utilities. Then follow the instructions displayed at the top of each tab to access the online Help information you want.

**Tip:** Some online Help topics also have multimedia video clips that you can watch. To view any of these video clips, insert the HP PhotoSmart CD that came with your HP PhotoSmart digital camera into the CD-ROM drive of your PC. Then click on the movie icon for that online Help topic.

## Contacting HP Customer Care

No matter where you are or when you need it, Hewlett-Packard Company's Customer Care is there to help you get the most from your HP products. Whether it's making products easier to use or providing you with innovative new ways to tackle your important projects, HP support helps you become a confident and creative user. If you do encounter a problem with your HP product, don't worry. HP support delivers fast, accurate solutions that won't rob you of either your product or your valuable time.

HP has Customer Care centers worldwide, some of which are listed on the next page. For a **complete** listing of HP's Customer Care services, please see the online Help.

## HP's Customer Care

**Note:** Replace a + with your international telephone access code.

United States	(208) 376-FOTO (3686)
Canada	English language support: (208) 376-FOTO (3686) French language support: (800) 387-3867
Europe	United Kingdom: 0171 512 5202 France: 04 50 43 9853 Germany: 0180 5 25 81 43 English language support from other European countries: +44 171 512 5202
Australia	(+61 3) 9272 8000
Singapore	(65) 272-5300



---

## Chapter 4

## Setting HP PhotoSmart Properties

This chapter explains how to use the **HP PhotoSmart Properties** dialog box to set properties for your HP PhotoSmart photo finishing software and C30 digital camera.

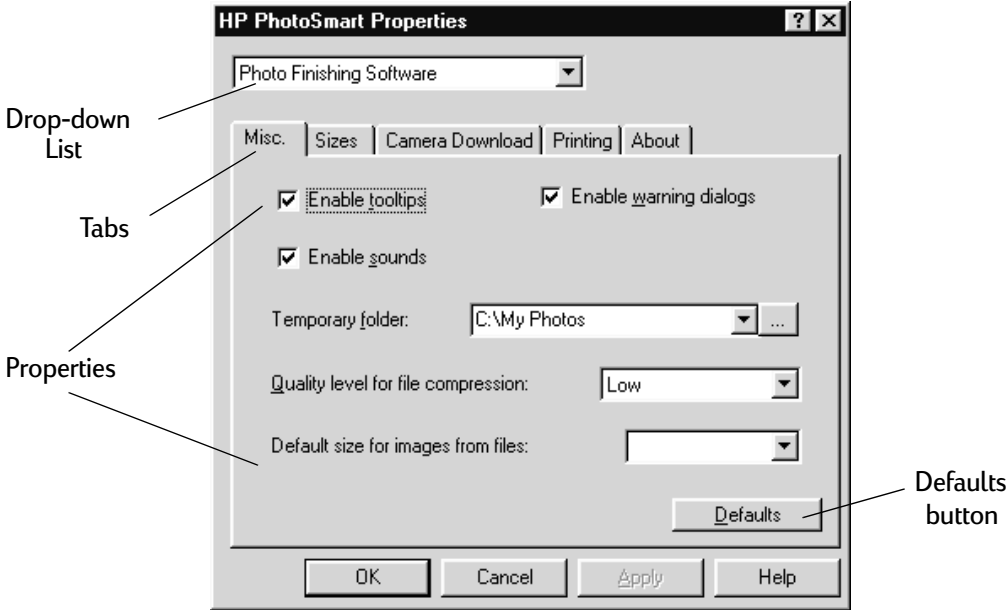
### Opening the HP PhotoSmart Properties Dialog Box

To open the **HP PhotoSmart Properties** dialog box, click the **Properties** button located at the bottom of the Tool Palette:



The **HP PhotoSmart Properties** dialog box appears, as shown on the next page.

# Getting to Know the Properties Dialog Box





## Using the Properties Dialog Box

From the drop-down list at the top of the **HP PhotoSmart Properties** dialog box, you can choose the **Properties** sheet of tabs for either the photo finishing software, or the C30 digital camera. Then click the tab on which you want to set properties.

To set a property which has:

- A check box, simply click the check box. A checkmark means the property is set; no checkmark means the property is turned off.
- An editable field, either choose the property from the drop-down list, or (if available) click the **Browse** button to get a dialog box from which you can choose the property.
- Other types of fields or windows, follow the directions provided on the tab.

**Note:** If you ever want to re-set a particular tab to its original, default settings, click the **Defaults** button at the bottom of that tab.

If you don't understand what a property does, or if you don't know how to set a property, click the **Help** button (the **?** button) at the upper right-hand corner of the **HP PhotoSmart Properties** dialog box. The cursor turns into a question mark. Move the question mark cursor over the property and then click that property. Online Help appears which explains that property and how to set it.



---

## Chapter 5

## Using the Camera Control

This chapter explains how to use the **Camera Control** window in the HP PhotoSmart photo finishing software. When your HP PhotoSmart digital camera is connected to your PC, you can use the **Camera Control** window to delete images from your camera, or to change the lock status of the images stored in your camera.

### Opening the Camera Control Window

To open the **Camera Control** window, click the **Camera Control** button located at the bottom of the Tool Palette:



The **Camera Control** window appears, as shown on the next page.

# Getting to Know the Camera Control Window

The screenshot shows the 'Camera Control' window with the following components and labels:

- Properties:** Points to the window title bar.
- Help:** Points to the question mark icon in the toolbar.
- Buttons:** Points to the UNLOCK, LOCK, SELECT ALL, and DELETE icons in the toolbar.
- Red diamond:** A red diamond icon above photo 1, labeled 'Red diamond indicating full copy of image is not loaded into the HP PhotoSmart software window'.
- Lock/Unlock Icon:** Points to the lock/unlock icons on the left side of each photo thumbnail.
- Camera Photo ID Number:** Points to the number in the top right corner of each photo thumbnail (e.g., 1, 2, 3, 4, 5, 6, 7, 8).
- Date & Time Photo was Taken:** Points to the timestamp below each photo thumbnail.
- Photo Quality Indicator:** Points to the diamond icons below each photo thumbnail. A legend indicates:
  - ◆ = Basic
  - ◆◆ = Fine
  - ◆◆◆ = Super-fine
- Status Bar:** At the bottom, it shows 'Camera will hold 26 more photos', 'AC power is ON', and 'Battery level is LOW'.

## Using the Camera Control Window

You can use the buttons located at the top of the **Camera Control** window to change the status of the images stored in your HP PhotoSmart digital camera, as follows:



Unlocks the selected images so that they can be deleted from the HP PhotoSmart digital camera's memory.



Locks the selected images in the HP PhotoSmart digital camera's memory so that the images cannot be deleted.



Selects all of the images so that you can lock, unlock, or delete them at one time.



Deletes all of the selected images that are not locked.

To have only certain images selected in the **Camera Control** window, click each image that you want to de-select (unhighlight).

Also at the top of the **Camera Control** window, you can click the **Help** button to view online Help, or the **Properties** button to get the **HP PhotoSmart Properties** dialog box.



---

## Glossary

### Acquire

A command in TWAIN-supported software programs that imports images from the HP PhotoSmart photo finishing software. If available, this command is usually in the File or Edit menu of the TWAIN-supported program.

### bit

The basic unit of digital information stored in a computer. Originally an acronym derived from Binary digit. Eight bits make a byte.

### bitmap

A type of computer image made up of a matrix of individual pixels. Also see Windows bitmap.

### .bmp

See Windows bitmap.

### brightness

The overall lightness or darkness of an image. Brightness can be adjusted by using the Midtones Exposure control in the Adjust view.

### button

A graphic area on the screen which, when clicked, executes a command.

### byte

A unit of digital information equivalent to 8 bits.

### CD-ROM

Compact Disk Read-Only Memory. A disk containing data that can be read by a computer, but cannot be modified.

### check box

Check boxes let you turn a feature on or off. The feature associated with the check box is on when the box contains an "X." Click the check box to check or uncheck it as needed.

### click

To press and release a mouse button once. (If not specified, this means the left mouse button.)

### clipboard

A temporary storage place used for copying and pasting data between software programs.

### crop

To eliminate portions of the image so that they do not show in the final image.



### crop box

The box over the preview image which surrounds the portion of the image that will be used in the final image when you save, export, or print the final image.

### double-click

To click the mouse button twice in rapid succession.

### drag

To hold the left mouse button down while moving the mouse pointer to move the screen item that is under the mouse pointer.

### exposure

The overall lightness or darkness of a photographic image.

### file

A basic unit of computer storage that lets a computer distinguish one collection of information from another. Files can contain graphics, documents, other data, or executable programs.

### file type

The format in which a graphics file (such as a file containing a photographic image) is saved. The HP PhotoSmart software supports the Windows Bitmap (.bmp), FlashPix (.fpx), JPEG (.jpg), and TIFF (.tif) file types for saving images in files.

### FlashPix

A file format used for photographic images. A FlashPix file uses the .fpx file name extension.

### flip

See mirror.

### folder

A collection of computer files stored at the same location on a computer.

### .fpx

The file name extension used for FlashPix files.

### hard disk

The permanently installed disk drive in a computer, which usually contains all the installed software programs.

### highlights

The lightest parts of image detail, usually reproduced as near-white or white on the computer screen or when printed.

### image

An electronic version of a photograph that can be displayed on a computer screen.

## JPEG

JPEG is a compressed file format for images. JPEG is named after the committee that developed the format, the Joint Photographic Expert Group. Its strengths are small file sizes and speed. (It is seven to ten times faster than some other formats.) The trade-off for these advantages, though, is reduced image quality. Each time an image is compressed with JPEG it loses a little of the image data. JPEG files are saved with the .jpg file name extension.

## .jpg

The file name extension generally used for JPEG files.

## midtones

The parts of an image that are between shadows and highlights.

## mirror

To flip an image left-to-right, or right-to-left, horizontally so that the resulting image mirrors the original image.

## photograph

The original negative, slide, or print. In the HP PhotoSmart photo finishing software, the electronic version of a photograph is called an image.

### pixel

The smallest element that can be assigned an independent color and intensity and displayed on a computer screen. A pixel is a dot with a square or rectangular shape. Thousands of pixels make up the image displayed on a computer screen.

### pointer

The small arrow or other-shaped graphic on the screen that follows the movement of the mouse.

### rotate

To turn the image clockwise or counter-clockwise using a Rotate button.

### saturation

The amount of color in the image. An image with high saturation has vivid color. A black and white image has zero saturation.

### shadows

The darkest parts of image detail, usually reproduced as near-black or black on the computer screen or when printed.

### taskbar

The Windows toolbar that docks on the edge of the desktop. The taskbar includes the Start button, buttons for each active program, and a status area.

### thumbnail

A miniature version of an image.

### .tif

The file name extension generally used for **TIFF files**.

### TIFF

Tagged Image File Format. A bitmapped file format for images. TIFF files are saved with the .tif file name extension.

### ToolTip

A brief description that displays when the pointer pauses over a button or control in the software window.

### TWAIN

A standard protocol (method of communication) that programs can use to send instructions to other programs or hardware and receive data back from them (such as images).

### Windows bitmap

A bitmapped file format for images. Windows bitmap files are saved with the .bmp file name extension.



## A

- Acquire command 61
- Adding an image caption 53
- Adjust view
  - Caption Box 53
  - changing the image's orientation 46
  - Color control 44
  - color tools 36
  - constrained crops 51
  - Crop Box 50
  - cropping tools 48
  - Exposure controls 40
  - exposure tools 36
  - Mirror button 46
  - number of images to print 64
  - Output Sizes drop-down list 52
  - Preview Area 38
  - preview image 38
  - Reset button 38
  - Rotate Clockwise button 47
  - Rotate Clockwise Small button 47
  - Rotate Counter-Clockwise button 47
  - Rotate Counter-Clockwise Small button 47
  - Rotate Crop Box button 50
  - Saturation control 45
  - screen areas in 34
  - Selected Images Gallery 38
  - Selection Circle in Color control 44
  - Sharpness control 42
  - shortcut to 28
  - Show Color Tools button 36
  - Show Exposure Tools button 37
  - tools in 34
  - unconstrained crops 51
  - View button 11

## Adjusting

- color 43, 44
- exposure 40
- saturation 45
- sharpness 42

## Auto detection of

- CompactFlash memory card 21
- digital camera 17

## C

Camera Control button 12, 79

Camera Control window

- opening 12, 79
- using 81

Caption, adding or changing 53

Captions check box in Print view 65

## Changing

- image caption 53
- image's file name in Save view 55
- number of images to print 64
- output size of image 52, 64
- preview image orientation in Adjust view 46
- properties 77

Color control in Adjust view 44

Color tools in Adjust view 36

Color, adjusting 43, 44

CompactFlash memory card

- auto detection of 21
- getting images from 20
- using Get Images control 22

Constrained crops in the Adjust view 51

Crop Box in Adjust view 50

Cropping the preview image in the Adjust view 48

Customer Care 72

## D

Deleting images from a digital camera 81

De-Select All button 30

De-selecting all images 30

De-selecting images 26

Diamond on thumbnail image 17, 19

Displaying image properties 34

Double-clicking on a thumbnail image 28



## E

- Exit button 13
- Exporting images to another program 58
- Exposure controls in Adjust view 40
- Exposure tools in Adjust view 36
- Exposure, adjusting 40

## F

- File name, changing in the Save view 55
- File types or formats 57
- Files, getting images from 24
- Files, saving images to 54
- Find utility in online Help 72

## G

- Gallery 13
- Get Images control 18, 22, 24
- Getting images from
  - CompactFlash memory card 20
  - digital camera 16
  - files 24

<http://www.photosmart.com>

## H

- Help button 12, 70
- Help Topics dialog box
  - opening 12, 70
  - using 70
- Highlights exposure control in Adjust view 40
- HP Customer Care 72
- HP PhotoSmart digital camera
  - auto detection of 17
  - Camera Control button 12, 79
  - changing lock status of images in 81
  - deleting images from 81
  - getting images from 16
  - Properties button 12, 75
  - setting properties for 77
  - using Get Images control 18
- HP PhotoSmart photo finishing software
  - Adjust view 34
  - adjusting images 34
  - Camera Control button 12, 79
  - Customer Care 72
  - de-selecting images 26
  - displaying image properties 34

- Exit button 13
- exporting images to another program 58
- Gallery 13
- getting images from CompactFlash memory card 20
- getting images from digital camera 16
- getting images from files 24
- Help button 12
- installing 7
- online Help 12, 70
- Print view 62
- printing images 62
- Properties button 12, 75
- rearranging images in the Gallery 33
- removing images from Gallery 31
- rotating a thumbnail image 33
- running 7
- Save view 54
- saving images to files 54
- Select view 10, 26
- selecting all images 30
- selecting images 26
- setting properties for 77
- standard areas and buttons in software window 10
- Status Bar 13

- system requirements 6
- Tool Palette 10
- video clips 72
- View buttons 11
- HP PhotoSmart Properties dialog box
  - online Help for 77
  - opening 12, 75
  - using 77
- HP PhotoSmart Web site, accessing 69

## I

- Image Caption Box 53
- Image caption, adding or changing 53
- Image files, getting images from 24
- Image properties, displaying 34
- Index Print check box in Print view 65
- Index utility in online Help 72
- Installing the photo finishing software 7

## L

- Locking images in a digital camera 81

## M

- Manually 8
- Manually running the photo finishing software 8
- Midtones exposure control in Adjust view 40
- Mirroring the image in Adjust view 46
- Multimedia video clips in online Help 72

## N

- Number of images to print, changing 64

## O

- Online Help
  - displaying ToolTips 10
  - Find utility 72
  - for setting Properties 77
  - Help button 12, 70
  - HP customer support services 72
  - Index utility 72
  - opening 12, 70
  - using 70
  - video clips 72

- Opening the photo finishing software 7
- Orientation of image, adjusting 46
- Output size of image, changing 52
- Output Sizes drop-down list 52, 64

## P

- Paper Saver check box in Print view 65
- Phone numbers for HP Customer Care 73
- Preview Area in Adjust view 38
- Preview image in Adjust view 38
- Print view
  - Captions check box 65
  - Index Print check box 65
  - Index Print Page 65
  - Output Sizes drop-down list 64
  - page turner on Printer Layout Page 66
  - Paper Saver check box 65
  - Printer Information Box 64
  - Printer Layout Pages 66
  - Printer Properties button 65
  - screen areas and tools in 62

- setting up images to print 64
- Start Print button 66
- View button 11
- Printer Information Box 64
- Printer Layout Pages, viewing 66
- Printer Properties button 65
- Printing images 62
- Properties button 12, 75
- Properties for an image, displaying 34
- Properties, setting or changing 77

## R

- Rearranging images in Gallery 33
- Red diamond on thumbnail image 17, 19
- Remove All Images button 31
- Remove De-Selected Images button 32
- Remove Image button on thumbnail frame 32
- Removing images from Gallery 31
- Reset button in Adjust view 38
- Rotate Crop Box button 50
- Rotate Image Clockwise button 33
- Rotate Image Counter-Clockwise button 33

- Rotating
  - image in Adjust view 47
  - thumbnail image 33
- Running the photo finishing software 7

## S

- Saturation, adjusting 45
- Save view
  - changing the image's file name 55
  - exporting images to another program 58
  - exporting images to non-TWAIN programs 58
  - exporting images to TWAIN programs 60
  - file types or formats 57
  - Save/Export control 56, 59
  - saving images to files 54
  - View button 11
- Saving images to files 54
- Select All button 30
- Select view
  - areas and buttons in 10
  - De-select All button 30
  - de-selecting all images 30
  - de-selecting images 26

- Gallery 13
- Get Images control 18, 22
- getting images 15
- Remove All Images button 31
- Remove De-Selected Images button 32
- Remove Image button on thumbnail frame 32
- removing images 31
- Rotate Image Clockwise button 33
- Rotate Image Counter-Clockwise button 33
- Select All button 30
- selecting all images 30
- selecting images 26
- Show All button 29
- Show Selected button 29
- View button 11
- Selected Images Gallery
  - in Adjust view 38
  - in Print view 62
- Selecting all images 30
- Selecting images 26
- Selection Circle in Color control of Adjust view 44

- Setting properties 77
- Setting up images to print 64
- Shadows exposure control in Adjust view 40
- Sharpness, adjusting 42
- Show All button 29
- Show Selected button 29
- Software window
  - maximizing 10
  - opening 7
  - standard areas and buttons in 10
- Start Print button in Print view 66
- Starting the photo finishing software 7
- Status Bar 13
- Straightening the preview image in the Adjust view 47
- Support from HP 72
- System requirements 6

## T

- Technical support 72
- Telephone numbers for HP Customer Care 73
- Tool Palette
  - Camera Control button 12
  - Exit button 13
  - Help button 12, 70
  - Properties button 12, 75
  - standard buttons in 10
  - View buttons 11
- ToolTips, displaying 10
- TWAIN programs, exporting images to 60

## U

- Unconstrained crops in the Adjust view 51
- Unlocking images in a digital camera 81

## V

- Video clips in online Help 72
- View buttons 11

## W

- Web site for HP PhotoSmart products 69