

# hp photosmart 7600 series



## basics guide



© Copyright 2003 Hewlett-Packard Company

All rights are reserved. No part of this document may be photocopied, reproduced, or translated to another language without the prior written consent of Hewlett-Packard Company.

The information contained in this document is subject to change without notice. Hewlett-Packard shall not be liable for errors contained herein or for consequential damages in connection with the furnishing, performance, or use of this material.

HP, the HP logo, and Photosmart are property of Hewlett-Packard Company.

The Secure Digital logo is a trademark of the SD Association.

Microsoft and Windows are registered trademarks of Microsoft Corporation.

CompactFlash, CF, and the CF logo are trademarks of the CompactFlash Association (CFA).

Sony Memory Stick is a registered trademark of Sony Corporation.

MultiMediaCard is a trademark of Infineon Technologies AG of Germany, and is licensed to the MMCA (MultiMediaCard Association).

SmartMedia is a trademark of Toshiba Corporation.

xD-Picture Card is a trademark of Fuji Photo Film Co., Ltd., Toshiba Corporation, and Olympus Optical Co., Ltd.

IBM is a registered trademark of International Business Machines Corporation.

Mac, the Mac logo, and Macintosh are registered trademarks of Apple Computer, Inc.

Pentium is a registered trademark of Intel Corporation.

Other brands and their products are trademarks or registered trademarks of their respective holders.

The embedded software in your printer is based in part on the work of the Independent JPEG Group.

The copyrights to certain photos within this document are retained by the original owners.

### **Regulatory Model Identification Number SDGOA-0376**

For regulatory identification purposes, your product is assigned a Regulatory Model Number. The Regulatory Model Number for your product is SDGOA-0376. This regulatory number should not be confused with the marketing name (hp photosmart 7600 series printer) or product number (Q3010A, Q3011A, Q3012A).

## **safety information**

Always follow basic safety precautions when using this product to reduce risk of injury from fire or electric shock.

**Warning!** To prevent fire or shock hazard, do not expose this product to rain or any type of moisture.

**Warning!** Potential shock hazard.

- Read and understand all instructions in the *HP Photosmart Setup Guide*.
- Use only a grounded electrical outlet when connecting the unit to a power source. If you do not know whether the outlet is grounded, check with a qualified electrician.
- Observe all warnings and instructions marked on the product.
- Unplug this product from wall outlets before cleaning.
- Do not install or use this product near water or when you are wet.
- Install the product securely on a stable surface.
- Install the product in a protected location where no one can step on or trip over the power cord, and where the power cord will not be damaged.
- If the product does not operate normally, see the troubleshooting information in the HP Photosmart Printer Help.
- There are no operator serviceable parts inside. Refer servicing to qualified service personnel.
- Use in a well-ventilated area.



<b>1</b>	<b>get started</b>	<b>1</b>
	welcome	1
	find information	1
	what's in the box?	3
	printer parts	4
	front	4
	photo tray	4
	back	5
	control panel	5
	indicator lights	6
	memory card slots	6
	menu structure	7
	paper information	8
	load paper in the in tray	8
	load paper in the photo tray	9
	maintain the quality of your photo paper	11
	print cartridge information	11
	supported print cartridges	11
	install or replace print cartridges	12
	remove print cartridges	14
	store the print cartridge	14
	ink-backup printing mode	15
	set printer preferences	16
	adjust the photo brightness	16
	set the date and time stamp	17
	print borderless photos	17
	set Exif printing	18
	select paper settings	19
	set print quality	19
	set LCD screen language and country/region	20
	revert to the factory default settings	20
<b>2</b>	<b>print from a memory card</b>	<b>21</b>
	supported memory cards	21
	insert a memory card	22
	remove the memory card	25
	decide which photos to print	26
	print a photo index page	26
	print a proof sheet	27
	print from a memory card	29
	print unmarked photos on a memory card	29
	print camera-selected photos on a memory card	29

	print new photos . . . . .	30
<b>3</b>	<b>print using the direct-printing port . . . . .</b>	<b>31</b>
	connect your hp digital camera to the direct-printing port . . . .	31
	connect your notebook computer to the direct-printing port . . .	32
<b>4</b>	<b>print from your computer . . . . .</b>	<b>35</b>
	print from your Windows PC . . . . .	35
	print from a software application . . . . .	35
	print borderless photos from your Windows PC . . . . .	36
	use the Windows PC taskbar icons . . . . .	37
	print from your Macintosh . . . . .	39
	print from a software application (OS X or OS 9). . . . .	39
<b>5</b>	<b>troubleshooting . . . . .</b>	<b>41</b>
	hardware problems . . . . .	41
	printing problems . . . . .	42
	error messages. . . . .	48
<b>6</b>	<b>specifications . . . . .</b>	<b>51</b>
	recommended paper . . . . .	51
	specifications . . . . .	52
	<b>index. . . . .</b>	<b>57</b>



# get started

## welcome

Thank you for purchasing an HP Photosmart 7600 Series printer! With your new photo printer, you can print beautiful photos, save photos to your computer, and create fun and easy projects.

For information about:

- Printing photos stored on your memory card, see **print from a memory card** on page 29.
- Printing camera-selected photos stored on your memory card, see **print camera-selected photos on a memory card** on page 29.
- Printing borderless photos using the printer's control panel, see **print borderless photos** on page 17.
- Printing borderless photos from your computer, see **print from your computer** on page 35.
- Printing camera-selected photos by connecting your HP direct-printing digital camera to your printer, see **connect your hp digital camera to the direct-printing port** on page 31.
- Saving photos to your computer, see the HP Photosmart Printer Help. For information about viewing the Printer Help, see **view the hp photosmart printer help** on page 2.

## find information

Your new printer comes with the following documentation to help you get started and take full advantage of your printer's capabilities:

- **Setup Guide**—The *HP Photosmart 7600 Series Setup Guide* contains quick and easy instructions to help you set up your printer and install the printer software.
- **Basics Guide**—The *HP Photosmart 7600 Series Basics Guide* is the booklet you are reading. This booklet describes the basic features of your printer and contains hardware troubleshooting information.
- **Setup & Support Reference Guide**—The *HP Photosmart Setup & Support Reference Guide* explains how to install and set up the software that comes with your printer. This guide contains software troubleshooting information, describes how to get support from **www.hp.com/support**, and explains how to contact HP support.
- **HP Photosmart Printer Help**—The HP Photosmart Printer Help describes how to use the more advanced features of your new printer. The Printer Help includes information about printer care and maintenance, advanced troubleshooting, and error messages.

After you have installed the HP Photosmart printer software on your computer, you can view and print the HP Photosmart Printer Help.

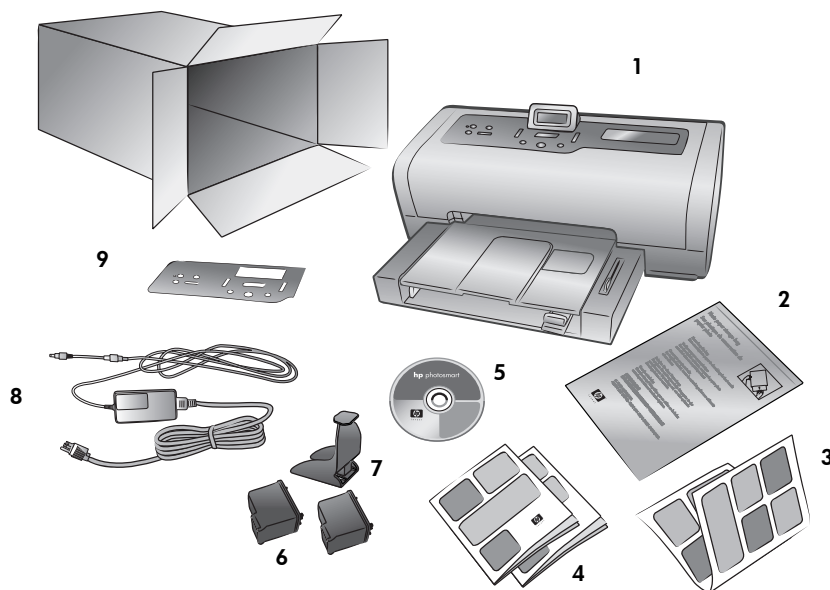
### view the hp photosmart printer help

- **Windows® PC:** From the **Start** menu, select **Programs** (in Windows XP, select **All Programs**); **Hewlett-Packard; Photosmart 140, 240, 7200, 7600, 7700, 7900 Series; Photo & Imaging Director**. From the **Photo & Imaging Director**, click **Help**.
- **Macintosh®:** Insert the HP Photosmart CD. In the **User Docs** folder, select your **language**, then double-click the **photosmart 7660.html** file.

### print the hp photosmart printer help

- **Windows PC:** Click **Print** in the top navigation bar of the HP Photosmart Printer Help window.
- **Macintosh:** Click in the frame you want to print. From the **File** menu, select **Print**, or click **Print** in the top navigation bar of the browser.

## what's in the box?



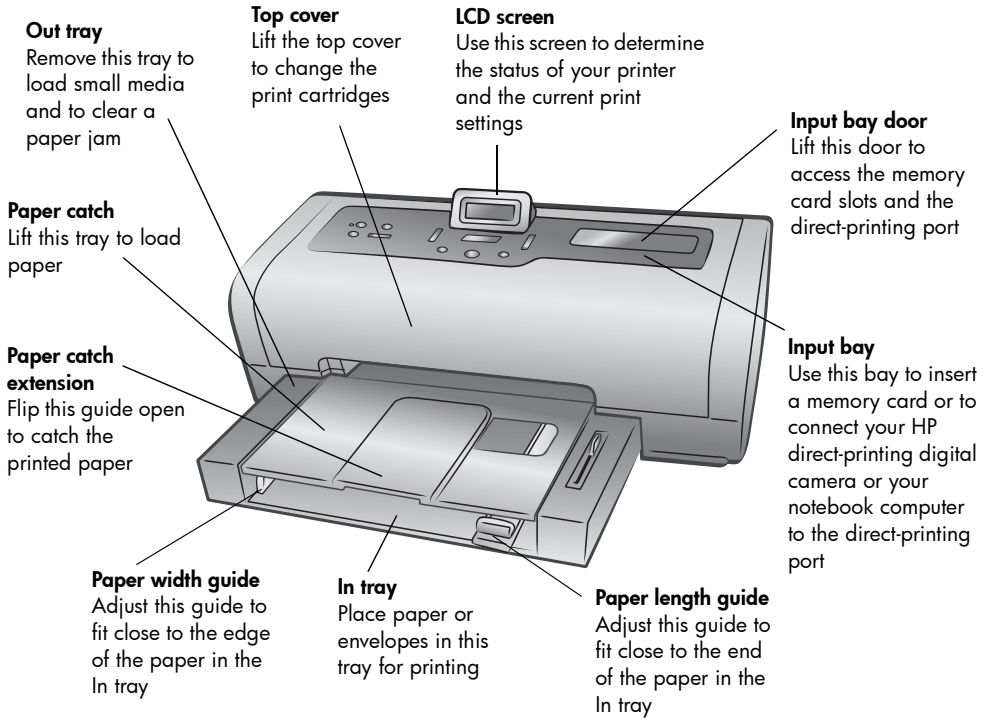
Your printer box contains the following items:

- 1 HP Photosmart 7600 Series printer
- 2 Photo paper storage bag
- 3 *HP Photosmart 7600 Series Setup Guide*
- 4 *HP Photosmart 7600 Series Basics Guide* and *HP Photosmart Setup & Support Reference Guide*
- 5 HP Photosmart 7600 Series printer software CD
- 6 HP #57 tri-color print cartridge and HP #58 photo print cartridge
- 7 Print cartridge protector
- 8 Power supply (may vary in appearance or have an additional power cord)
- 9 Faceplate

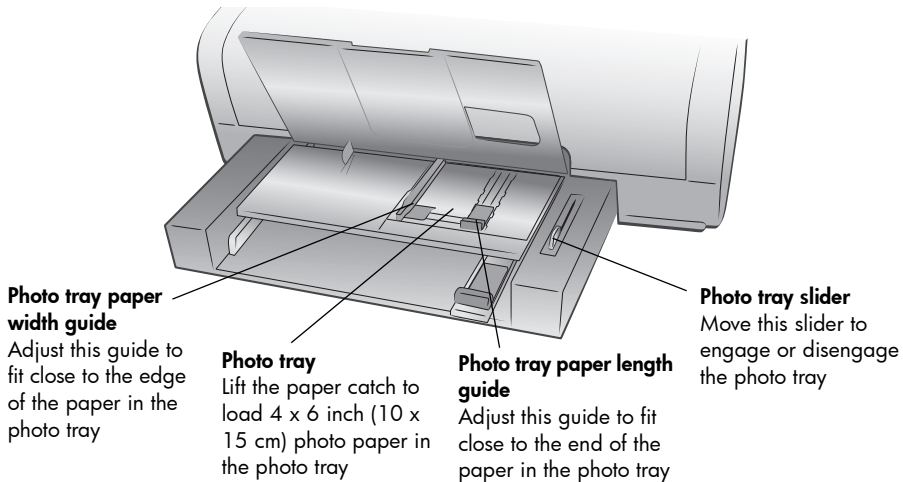
**Note:** Some contents may vary by country or region.

## printer parts

### front



### photo tray





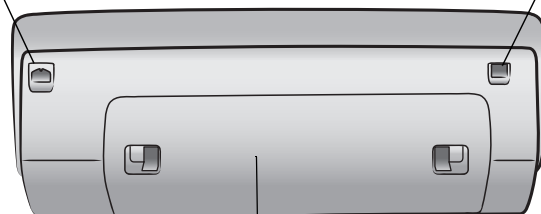
## back

**Power cord connection**

Use this port to connect the power cord included with the printer

**USB port**

Use this port to connect the printer to your computer

**Rear access door**

Remove this door to clear a paper jam

## control panel

**PRINT NEW PHOTOS**

Press this button to print all photos on a memory card that have not been previously printed from the memory card

**COPIES + or -**

Press this button to select the number of copies to print

**SIZE + or -**

Press this button to adjust the print size of your photos

**ON**

Press this button to turn on the printer or put it into power save mode

**SAVE**

Press this button to save photos from a memory card to your computer

**MENU**

Press these arrows to view the printer menu

**OK**

Press this button to select the current photo, to answer questions on the LCD screen, or to select menu options

**PRINT**

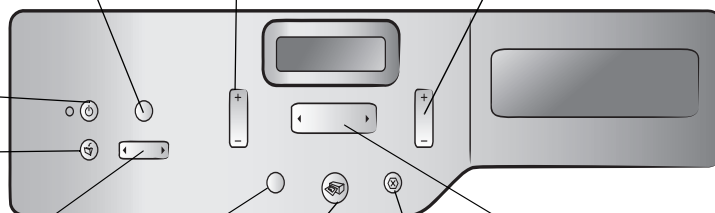
Press this button to print selected photos from a memory card

**SELECT PHOTOS**

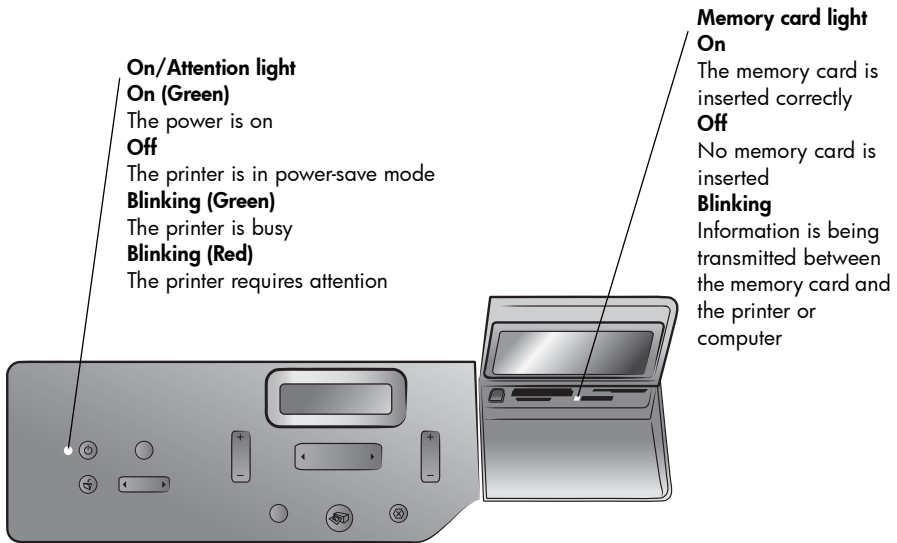
Press these arrows to select photos for printing

**CANCEL**

Press this button to deselect photos, to exit a menu, or to stop an action you have requested



## indicator lights



## memory card slots

### CompactFlash™ / IBM®

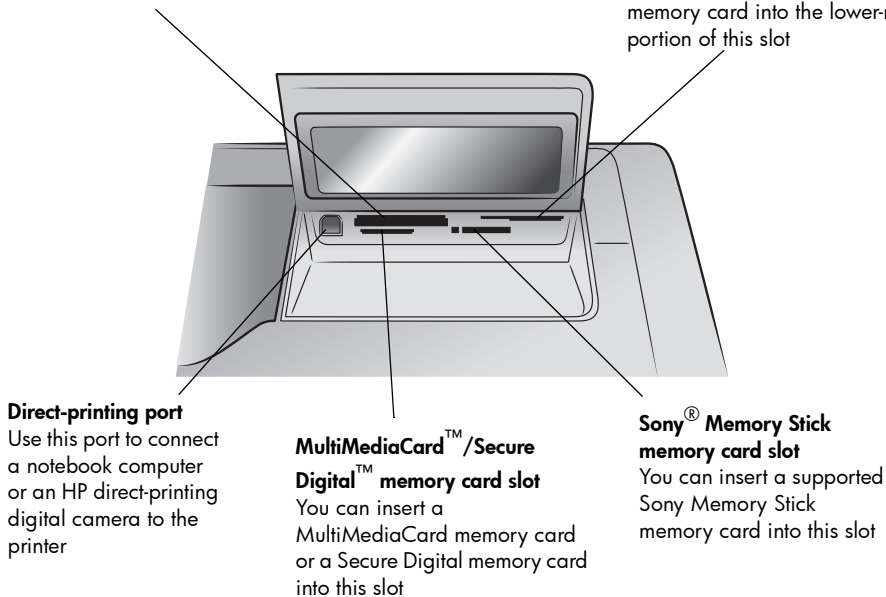
#### Microdrive memory card slot

You can insert a CompactFlash or an IBM Microdrive memory card into this slot

### SmartMedia™ / xD-Picture Card™

#### memory card slot

You can insert a SmartMedia memory card into the upper portion of this slot or an xD-Picture Card memory card into the lower-right portion of this slot



## menu structure

The following options are available from the menu on your printer's LCD screen. Press the **MENU** button to access these options.

Menu Option	Choices
Select page layout	Photo Album Paper Saver
Select photo cropping option	Standard crop Full image (do not crop)
Adjust photo brightness	Seven levels from dark to light
Color options for next print	Color Black & white Sepia (brown) Antique
Date/time stamp option	Date/time Date only Off
Borderless printing option	On Off
Exif printing	On Off
Select paper settings	Auto-detect Manually set
Change the print quality	Best Normal
Improve contrast	On Off
Print proof sheet	New photos All photos
Scan proof sheet	N/A
Print a sample page	N/A
Print a test page	N/A
Clean the print cartridges	N/A
Calibrate printer	N/A
Select language	English, Français, Deutsch, Español, Italiano, Português, Nederlands
Reset all menu settings	N/A

## paper information

You can print on a wide variety of paper types and sizes, from index cards and photo paper to envelopes and transparencies. For best results, use paper designed specifically for your projects. For example, if you are printing a photo, be sure to print on HP premium plus photo paper for the best photo quality.

**Note:** If you are printing from the computer and using HP specialty paper, select the paper type when you set the print settings. For more information, see **print from your Windows PC** on page 35 or **print from your Macintosh** on page 39.

For a list of available HP-designed inkjet papers, or to purchase supplies, go to:

- **www.hpshopping.com** (U.S.)
- **www.hp-go-supplies.com** (Europe)
- **www.hp.com/paper** (Asia/Pacific)
- **www.jpn.hp.com/supply/inkjet** (Japan)

Different countries use different paper sizes. For instance, Europe uses A4 paper while the U.S. uses letter-size paper. To change the paper sizes that are available from the printer's LCD screen, change the language and regional paper options.

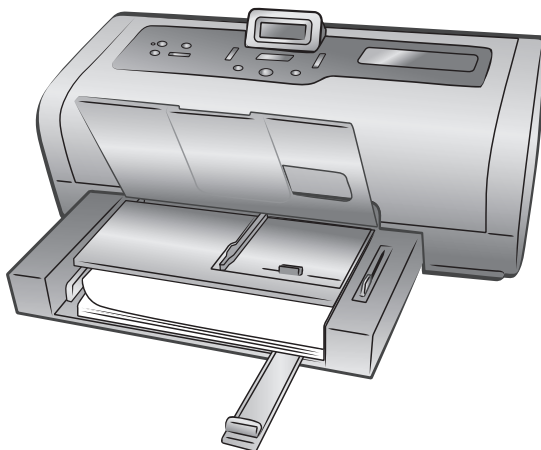
**Note:** Your printer supports the Automatic Two-Sided Printing Accessory (HP C8955A) for double-sided printing.

### load paper in the in tray

You can print using many different types of paper in the In tray, including plain paper, HP photo paper, and HP premium inkjet transparency film. For more information about supported paper types and sizes, see **specifications** on page 51.

#### To load paper in the In tray:

- 1 Lift the paper catch.



- 2 Pull out the paper length guide on the In tray and slide the paper width guide as far to the left as it will go.
- 3 Place a stack of paper in the In tray.
  - Load the paper with the side to be printed facing down. The printed document faces up on the paper catch.
  - Always load the paper in portrait orientation, with the shortest edge feeding into the printer.
  - Be careful not to use too much or too little paper. It may be difficult for the printer to pick up a sheet of paper when there are only one or two sheets in the In tray. Check that the stack of paper contains several sheets but is no higher than the top of the paper length guide. For more information about the amount of paper to load in the In tray, see **specifications** on page 52.
  - Use one type and size of paper at a time. Do not mix paper types or sizes in the In tray.
- 4 Adjust the paper width guide and the paper length guide to fit close to the edges of the paper without bending the paper. This helps the paper to feed straight into the printer.
- 5 Lower the paper catch.
- 6 Pull out the photo tray slider until it stops. This disengages the photo tray so the printer uses the paper in the In tray.

### load paper in the photo tray

Use the photo tray when you want to print on 4 x 6 inch (10 x 15 cm) photo paper or L-size cards (3.5 x 5 inches, 90 x 127 mm).

**Note:** For information about storing and handling photo paper, see **maintain the quality of your photo paper** on page 11.

**Tip:** If you want to print 4 x 6 inch (10 x 15 cm) borderless photos, be sure to use **HP premium plus photo paper, glossy 4 x 6 borderless**. If you are printing from the control panel, check that your printer is set to print borderless photos. If you are printing from a software application, select the appropriate borderless paper size from the Print dialog box. HP does not recommend printing borderless photos on plain paper. For more information about recommended paper types, see **recommended paper** on page 51.

When you use the photo tray, you can leave paper in the In tray. If you run out of photo paper in the photo tray, the printer continues to print using paper from the In tray.

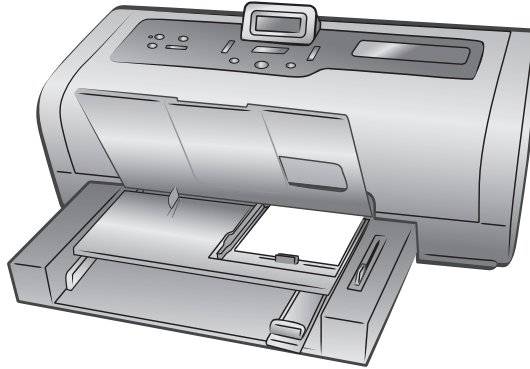
**Tip:** To print many photos at once, load the In tray with additional photo paper.

### To load paper in the photo tray:

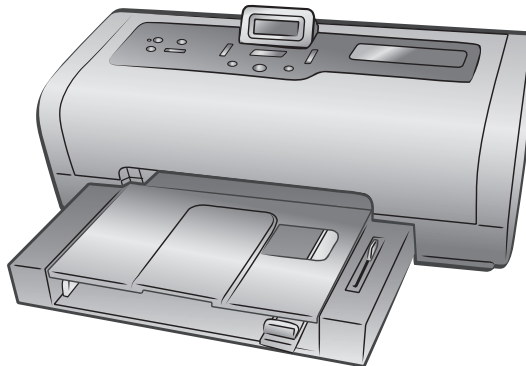
- 1 Pull out the photo tray slider until it stops. This action disengages the photo tray.
- 2 Lift the paper catch.

- 3 Pull out the photo tray paper length guide and slide the photo tray paper width guide as far to the left as it will go.
- 4 Place approximately 15 sheets of photo paper in the photo tray with the side to be printed facing down. If you are using tabbed paper, insert the paper so the tab feeds in last. The printed photo faces up on the paper catch.

**Note:** If you overload the photo tray, the printer may not be able to pick up the photo paper.



- 5 Adjust the photo tray paper length guide and paper width guide to fit close to the edges of the paper without bending the paper. This adjustment helps the paper to feed straight into the printer.
- 6 Lower the paper catch.
- 7 Push the photo tray slider forward until it stops. The photo tray disappears from view in the photo tray window. This action engages the photo tray.



## maintain the quality of your photo paper

To ensure high-quality prints, it is important to maintain the quality of your photo paper. This section provides information about storing and handling your photo paper.

### store photo paper

Keep unused photo paper in the photo paper storage bag that was shipped with your printer. Store the packaged photo paper on a flat surface in a cool, dry place.

When you are ready to print, remove only the paper you plan to use immediately. When you have finished printing, return any unused photo paper to the photo paper storage bag and seal it.

**Note:** Do not leave unused paper in the printer's paper tray. The paper may start to curl, which may reduce the quality of your photographs. Photo paper should be flat before printing. For more information about flattening curled paper, see the next section.

### handle photo paper

Always hold photo paper by the edges. Fingerprints on photo paper can reduce print quality.

If the corners of the photo paper curl, place the paper in a resealable plastic bag and gently bend it in the opposite direction of the curl until the paper lies flat.

## print cartridge information

Your printer prints in color and in black and white. HP provides a range of print cartridges so that you can choose the best print cartridges for your project.

### supported print cartridges

Your printer supports the following print cartridges. Installing a print cartridge that is not supported may invalidate your printer warranty.

To print...	Use these print cartridges...
Color or black and white documents	<b>HP #57 (C6657A)</b> —Tri-color print cartridge and <b>HP #56 (C6656A)</b> —Black print cartridge
Color photos	<b>HP #57 (C6657A)</b> —Tri-color print cartridge and <b>HP #58 (C6658A)</b> —Photo print cartridge
Black and white photos	<b>HP #57 (C6657A)</b> —Tri-color print cartridge and <b>HP #59 (C9359A)</b> —Photo gray print cartridge

When you install a print cartridge, match the number on the print cartridge to the number on the print cartridge latch. The printer holds two print cartridges at a time.

**Caution!** Check that you are using the correct print cartridges. Also, note that HP does not recommend modifying or refilling HP print cartridges. Damage that results from modifying or refilling HP print cartridges is not covered by HP's warranty.

## install or replace print cartridges

To get the best performance from your printer, use only genuine HP factory-filled print cartridges.

To get maximum use from your print cartridges, turn off the printer when it is not in use. Do not unplug the printer or turn off the power source (such as a power strip) until the On/Attention light is off. Properly turning off the printer allows it to store the print cartridges properly.

### To install or replace the print cartridges:

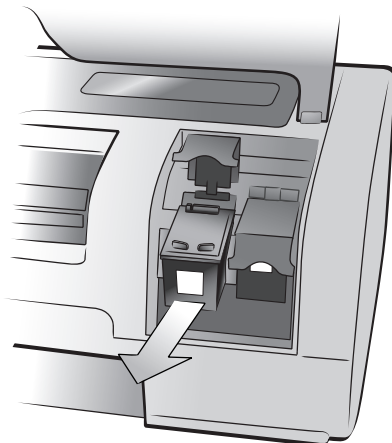
- 1 If the printer is off, press the **ON** button on the printer's control panel.
- 2 Load plain paper in the In tray so the printer can print a calibration page after you install the print cartridges.
- 3 Lift the top cover of the printer.
- 4 Push down on the print cartridge latch and pull it forward. The print cartridge latch pops open.



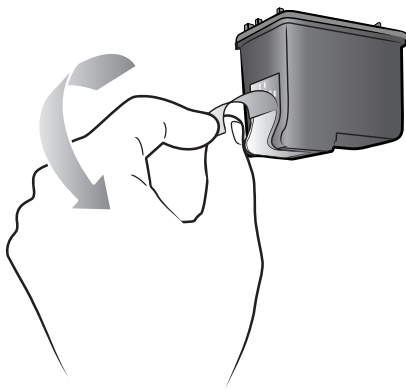
- 5 If you are replacing a print cartridge, slide out the old print cartridge and store, recycle, or discard it.



**Note:** For information about recycling print cartridges, go to [www.hp.com/recycle](http://www.hp.com/recycle).



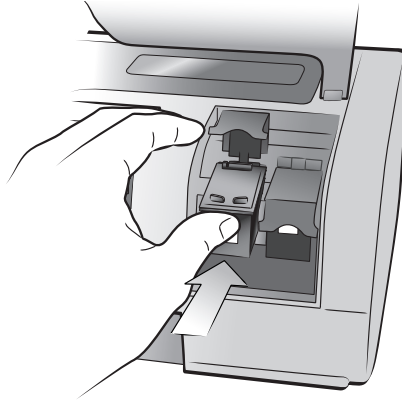
- 6 Take the new print cartridge out of its package.
- 7 Grasp the pink tab and gently peel off the plastic tape. Make sure you remove only the plastic tape. Be sure to install the print cartridge immediately after removing the tape; ink nozzles exposed longer than one minute may dry out and cause printing problems later. Once the tape is removed, do not attempt to replace it.



**Caution!** Do not touch the ink nozzles or the copper contacts on the print cartridge. Touching these parts may cause the print cartridge to fail.

- 8 Insert the print cartridge:
  - a. Hold the print cartridge so the copper contacts go into the printer first. Line up the ridges on the left and right sides of the top of the print cartridge with the grooves on the inside of the print cartridge cradle.

- b. Carefully slide the print cartridge under the silver bar into the cradle, then firmly push the print cartridge in until it stops.



- c. Push down on the print cartridge latch until it locks.
- 9 Close the top cover.
  - 10 If you are prompted to print a calibration page, press the **OK** button. The printer prints a calibration page.

Your printer and print cartridges are calibrated to give you optimal printing results. You can discard the calibration page.

## remove print cartridges

Remove a print cartridge for replacement, disposal, or storage.

### To remove a print cartridge:

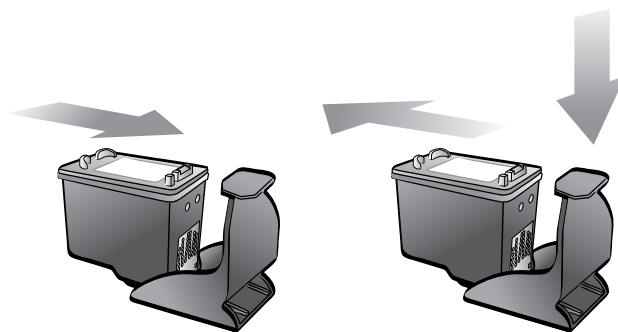
- 1 If the printer is off, press the **ON** button on the printer's control panel.
- 2 Lift the top cover of the printer.
- 3 Push down on the print cartridge latch, then pull it forward. The print cartridge latch pops open.
- 4 Slide out the old print cartridge and store, recycle, or discard it.

## store the print cartridge

The print cartridge protector is designed to keep your print cartridge fresh when it is not being used. Whenever you remove a partially used print cartridge from the printer, store it in the print cartridge protector that came with your printer.

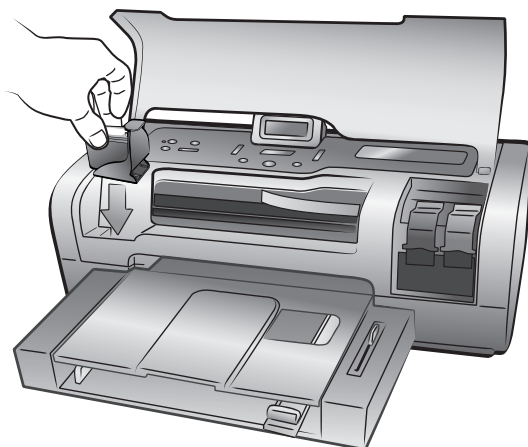
**Note:** It is critical that the print cartridge be placed in the print cartridge protector when it is not installed in the printer. Failure to properly store the print cartridge can result in failure of the print cartridge.

- To insert a print cartridge into the print cartridge protector, slide the print cartridge into the print cartridge protector at a slight angle, and snap it securely into place.



- To remove the print cartridge from the print cartridge protector, press down and back on the top of the print cartridge protector to release the print cartridge, then slide the print cartridge out of the print cartridge protector.

Once you have placed the print cartridge protector on the print cartridge, you can store the print cartridge in the print cartridge storage area located in your printer.



### ink-backup printing mode

Ink-backup Printing Mode allows you to keep printing even if one of your print cartridges fails or runs out of ink. If you receive a print cartridge error message on the LCD screen or your computer monitor, remove the print cartridge and close the top cover to enter Ink-backup Printing Mode. A message reminds you that you are in Ink-backup Printing Mode.

Printing in Ink-backup Printing Mode slows the printer and affects the print quality.

**Note:** Although Ink-backup Printing Mode allows you to keep printing, print quality and speed are reduced. For the highest print quality, be sure to replace the missing print cartridge as soon as possible.

## set printer preferences

Your printer stores default settings for features such as paper settings, date and time stamp, and borderless printing. You can change your printer's default settings to your own preferences using the printer's control panel.

**Note:** When you print from your computer, the control panel settings on the printer do not apply. The software on your computer overrides the printer preferences you set using the printer's control panel.

Press the **MENU** ◀ or ▶ button on the printer's control panel to display the default setting to be changed, then press the **OK** button to open the menu. Press the **MENU** ◀ or ▶ button to scroll through the sub-menu options, and then press the **OK** button to select a setting. Press the **CANCEL** button to cancel an action.

The following is a list of some of the settings you can change using the **MENU** button on the printer's control panel:

- Adjust the photo brightness
- Set the date and time stamp
- Print borderless photos
- Set Exif printing
- Select paper settings
- Set print quality
- Set LCD screen language and country/region
- Revert to the factory default settings

### adjust the photo brightness

To print your photos lighter or darker than the originals, adjust the photo brightness.

#### To change the default brightness setting:

- 1 On the printer's control panel, press the **MENU** ◀ or ▶ button until ADJUST PHOTO BRIGHTNESS? appears on the printer's LCD screen, then press the **OK** button.
- 2 Press the **MENU** ▶ button to lighten your photos, or press the **MENU** ◀ button to darken your photos.
- 3 Press the **OK** button.

A message appears confirming your selection.

**Note:** The new setting remains in effect until you change it again.

## set the date and time stamp

You can print the date and time that you took the photo in the lower-left corner of your photos. The default setting is **Off**.

**Note:** If you modify a photo using your computer, the original date and time information is lost. Changes that you make to the photo using the printer's control panel (such as changing the brightness or size) do not affect the date and time information.

### To change the default date/time setting:

- 1 On the printer's control panel, press the **MENU** ◀ or ▶ button until DATE/TIME STAMP OPTION? appears on the printer's LCD screen, and then press the **OK** button.

**Note:** An asterisk (\*) next to a setting indicates the current selection.

- 2 Select one of the following:

- **Date/time** – To turn both the date and time stamp on, press the **MENU** ◀ or ▶ button until DATE/TIME appears, then press the **OK** button.
- **Date only** – To turn only the date stamp on, press the **MENU** ◀ or ▶ button until DATE ONLY appears, then press the **OK** button.
- **Off** – To turn the date and time stamp off, press the **MENU** ◀ or ▶ button until OFF appears, then press the **OK** button.

A message appears confirming your selection.

**Note:** The new setting remains in effect until you change it again.

## print borderless photos

By default, your printer prints photos without borders so that photos print to the edges of the photo paper. If you turn this feature off, all photos print with borders.

Borderless printing is supported for 4 x 6 inch photo paper (100 x 150 mm), 8.5 x 11 inch (216 x 280 mm) paper. On 4 x 6 inch photo paper with 0.5 inch tab (10 x 15 cm with 1.25 cm tab), the photo prints without borders on three sides and with a small border on the bottom edge. Photos printed on other paper sizes print with borders even if you turn borderless printing on. This is caused by the way the printer handles the paper and is not an error.

**Note:** Borderless printing is not the default setting when you print photos from your computer. The software application you are using to print photos determines the setting.

**Note:** HP does not recommend printing borderless photos on plain paper. For more information about recommended paper types, see **recommended paper** on page 51.

### To change the default setting for borderless printing:

- 1 On the printer's control panel, press the **MENU** ◀ or ▶ button until BORDERLESS PRINTING OPTION? appears on the printer's LCD screen, and then press the **OK** button. The printer's LCD screen displays \*ON.

**Note:** An asterisk next to a setting indicates the current selection.

- 2 Select one of the following:
  - **Off** – To turn borderless printing off, press the **MENU** ◀ or ▶ button until OFF appears, and then press the **OK** button.
  - **On** – To turn borderless printing on, press the **MENU** ◀ or ▶ button until ON appears, and then press the **OK** button.

A message appears confirming your selection.

**Note:** The new setting remains in effect until you change it again.

### set Exif printing

Your printer supports Exif Print (Exchangeable Image File format 2.2), an international open standard that simplifies digital imaging and enhances printed photos. When you take a photo with a digital camera that supports Exif Print, information such as exposure time, flash setting, and color saturation is encoded in the image file.

You can set the printer to use the Exif Print information to automatically perform image-specific enhancements.

### To change the default setting for Exif printing:

- 1 On the printer's control panel, press the **MENU** ◀ or ▶ button until EXIF PRINTING? appears on the printer's LCD screen, and then press the **OK** button.

**Note:** An asterisk next to a setting indicates the current selection.

- 2 Select one of the following:
  - **On** – To use Exif Print information to enhance your prints, press the **MENU** ◀ or ▶ button until ON appears, and then press the **OK** button.
  - **Off** – To ignore Exif Print information, press the **MENU** ◀ or ▶ button until OFF appears, and then press the **OK** button.

A message appears confirming your selection.

**Note:** The new setting remains in effect until you change it again.

## select paper settings

Sensors in the printer's In tray automatically detect the size and type of paper loaded into the tray. To set the printer to ask you for the paper size and type each time you print, turn the paper detection sensor off. The default setting is **On**.

**Note:** The printer does not automatically detect the paper type and size when borderless printing is turned on. For information about setting the borderless printing option, see **print borderless photos** on page 17.

**Note:** The **Select paper settings** option applies to print projects that you start from the printer's control panel. To use the printer's automatic sensors when you start print projects from your computer, select **Automatic** as the paper type in the printer dialog.

### To change the default setting for automatic paper detection:

- 1 On the printer's control panel, press the **MENU** ◀ or ▶ button until **SELECT PAPER SETTINGS?** appears on the printer's LCD screen, and then press the **OK** button.

**Note:** An asterisk next to a setting indicates the current selection.

- 2 Select one of the following:
  - **Manually set**—To turn automatic detection off, press the **MENU** ◀ or ▶ button until **MANUALLY SET** appears, and then press the **OK** button.
  - **Auto-detect**—To turn automatic detection on, press the **MENU** ◀ or ▶ button until **AUTO-DETECT** appears, and then press the **OK** button.

A message appears confirming your selection.

**Note:** The new setting remains in effect until you change it again.

## set print quality

You can set the print quality when you print photos, text, or graphics from the control panel. **Best** is the default print quality and produces the best quality prints. **Normal** quality conserves ink and prints faster.

**Note:** Changing the print quality setting applies only to the next print project. Print quality is reset to **Best** when the print project finishes printing or is cancelled.

### To change the print quality for the next print job:

- 1 On the printer's control panel, press the **MENU** ◀ or ▶ button until **CHANGE THE PRINT QUALITY?** appears on the printer's LCD screen, and then press the **OK** button.
- 2 Select one of the following:
  - **Best**—For the highest quality photos by pressing the **MENU** ◀ or ▶ button until **BEST** appears, and then press the **OK** button.
  - **Normal**—For normal quality photos by pressing the **MENU** ◀ or ▶ button until **NORMAL** appears, and then press the **OK** button.

A message appears confirming your selection.

## set LCD screen language and country/region

The first time you turn the printer on, you may be asked to select a language and country/region for the printer's LCD screen. You can change the language and country/region setting at any time. The country/region setting also determines what photo and paper sizes the printer's LCD screen displays.

### To change the language and country/region settings:

**Note:** Resetting preferences to the factory default settings does not change your selected language or country/region setting. You can only change the language by following these steps.

- 1 On the printer's control panel, press the **MENU** ◀ or ▶ button until **SELECT LANGUAGE?** appears on the printer's LCD screen, and then press the **OK** button.
- 2 Press the **MENU** ◀ or ▶ button until your desired language appears.

**Note:** An asterisk next to a setting indicates the current selection.

- 3 Press the **OK** button to select the language. A message asking you to confirm your selection appears. If it is the correct language, press the **OK** button. If the incorrect language appears, press the **CANCEL** button and start the selection process again.

A message appears confirming your selection.

- 4 The **SELECT COUNTRY/REGION?** setting appears on the printer's LCD screen. Press the **OK** button to continue.
- 5 Press the **MENU** ◀ or ▶ button until the desired country and region appears on the printer's LCD screen.
- 6 Press the **OK** button to select the country and region.

The prompts and options on your printer's LCD screen now appear in the language you selected.

## revert to the factory default settings

If you made adjustments to the default settings, you can reset the printer to the original factory settings at any time.

**Note:** The language and region settings you selected do not change if you revert back to the factory default settings.

### To revert to the factory default settings:

- 1 On the printer's control panel, press the **MENU** ◀ or ▶ button until **RESET ALL MENU SETTINGS?** appears on the printer's LCD screen.
- 2 Press the **OK** button.

A message appears confirming your selection.



## 2

## print from a memory card

It's easy to print high-quality photos for yourself, family, and friends. If your digital camera uses a memory card to store photos, you can insert the memory card into the printer to print your photos. Messages on the printer's LCD screen guide you through the process—you don't have to turn on your computer or even have your printer connected to a computer!

**Note:** You can also print photos using your computer. For more information, see **print from your computer** on page 35.

### supported memory cards

Your HP Photosmart printer can read the following memory cards:

CompactFlash Association (CFA) certified Type I and II, IBM Microdrive, MultiMediaCard, Secure Digital, SmartMedia, Sony Memory Sticks, xD-Picture Card

These cards are manufactured by several vendors and are available in a variety of storage capacities. You can purchase memory cards where you purchased your digital camera or at most computer supply stores.

**Caution!** Using any other type of memory card may damage the memory card and the printer.



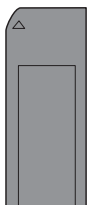
IBM Microdrive



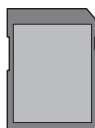
CompactFlash  
Type I and II



SmartMedia



Sony Memory Sticks



Secure Digital



MultiMediaCard



xD-Picture Card

## insert a memory card

After you have taken pictures with your digital camera, remove the memory card from your camera and insert it into your printer. You can print photos immediately or save the photos to your computer.

When the memory card is inserted correctly, the memory card light blinks and then remains solid.

**Caution!** Do not pull out the memory card while the memory card light is blinking. Removing a memory card while it is being accessed may damage the printer or the memory card, or corrupt the information on the memory card. For more information, see **remove the memory card** on page 25.

### To insert a memory card:

- 1 Lift the input bay door.
- 2 Remove any memory cards that may already be inserted into any of the memory card slots.
- 3 Hold the memory card so the correct side faces up. To determine the correct orientation for your memory card, see the table that follows these steps.

**Note:** To use a Sony Memory Stick Duo™ memory card, insert the memory card into the adapter that came with the Memory Stick Duo before you insert it into the printer's memory card slot.

- 4 Insert the memory card into the appropriate memory card slot. The end with the metal contacts or pinholes must go into the printer first.

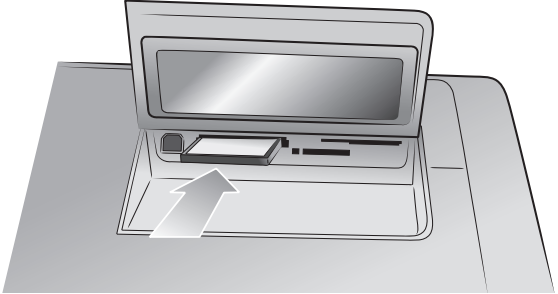
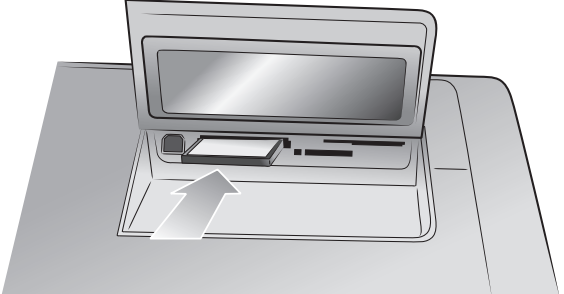
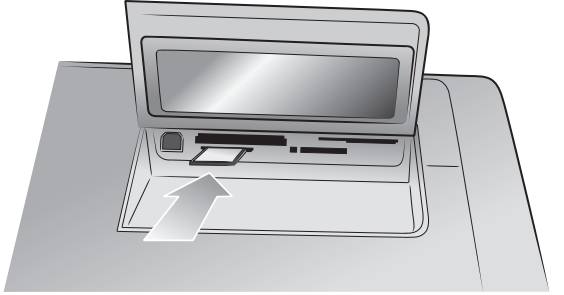
**Caution!** Inserting the memory card any other way may damage the memory card or the printer.

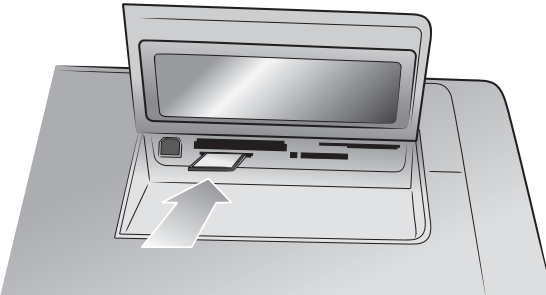
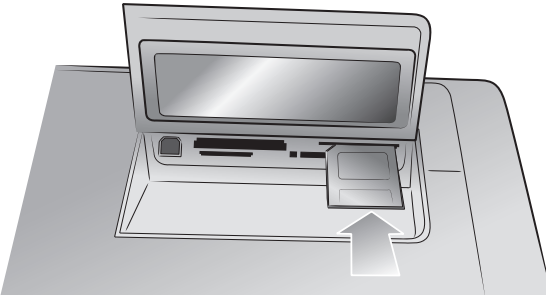

- 5 Gently push the memory card into the printer until it stops. The memory card may not insert all the way into the printer.

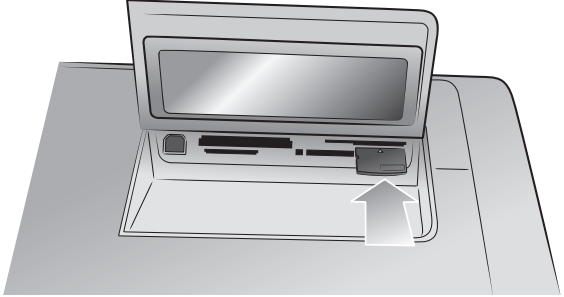
**Caution!** Forcing the memory card into the printer too far may damage the memory card or the printer.

**Note:** If you insert a SmartMedia memory card upside down, the red On/Attention light blinks. Remove the memory card and reinsert it properly.

**Note:** If you have camera-selected photos stored on the memory card, a message appears on the printer's LCD screen asking if you want to print the camera-selected photos. For more information, see **print camera-selected photos on a memory card** on page 29.

Memory card	Memory card slot	How to hold and insert the memory card
CompactFlash Type I and II	Top left slot	<ul style="list-style-type: none"> <li>• Front label faces up, and if the label has an arrow, the arrow points toward the printer</li> <li>• Pinholes insert into the printer first</li> </ul> 
IBM Microdrive	Top left slot	<ul style="list-style-type: none"> <li>• Front label faces up, and if the label has an arrow, the arrow points toward the printer</li> <li>• Pinholes insert into the printer first</li> </ul> 
MultiMediaCard	Bottom left slot	<ul style="list-style-type: none"> <li>• Label faces up, angled corner is on the right and arrow points toward the printer</li> <li>• Metal contacts face down</li> </ul> 

Memory card	Memory card slot	How to hold and insert the memory card
Secure Digital	Bottom left slot	<ul style="list-style-type: none"> <li>• Label faces up and angled corner is on the right</li> <li>• Metal contacts face down</li> </ul> 
SmartMedia	Upper portion of the top right double slot	<ul style="list-style-type: none"> <li>• Angled corner is on the left, and if the label has an arrow, the arrow points toward the printer</li> <li>• Metal contacts face down</li> </ul> 
Sony Memory Sticks	Bottom right slot	<ul style="list-style-type: none"> <li>• Angled corner is on the left and arrow points toward the printer</li> <li>• Metal contacts face down</li> </ul> 

Memory card	Memory card slot	How to hold and insert the memory card
xD-Picture Card	Lower right portion of the top right double slot	<ul style="list-style-type: none"> <li>Label faces up and arrow points toward the printer</li> <li>Metal contacts face down</li> </ul> 

## remove the memory card

Use the procedures in this section to safely remove the memory card from the printer's memory card slot.

**Caution!** Do not pull out the memory card while the memory card light is blinking. A blinking light means that the printer is accessing the memory card. Wait until the memory card light remains solid. Removing a memory card while it is being accessed may damage the printer and the memory card or corrupt the information on the memory card.

### To remove a memory card when the printer is not connected to a computer:

- ▶ Once the memory card light stops blinking, gently pull the memory card to remove it from the printer's memory card slot.

### To remove a memory card when the printer is connected to a Windows PC:

- 1 If the memory card light is blinking, wait for it to stop.
- 2 With the memory card still inserted in the printer, right-click the memory card icon in the Windows taskbar.
- 3 When the menu appears, select **Prepare to remove card**.
- 4 When prompted on the computer screen, click **OK**.

It is now safe to remove the memory card from the printer. Gently pull the memory card to remove it from the printer's memory card slot.

### To remove a memory card when the printer is connected to a Macintosh computer:

- 1 With the memory card still inserted in the printer, drag the memory card icon from the desktop to the Trash.
- 2 Wait until the memory card light stops blinking, then remove the memory card from the printer's memory card slot.

## decide which photos to print

You can decide which photos to print by printing a photo index page or a proof sheet.

- A photo index page shows thumbnail views and index numbers of the photos on the memory card. For more information, see **print a photo index page** on page 26.
- A proof sheet, which may be several pages long, shows thumbnail views of all the photos stored on the memory card, and allows you to select photos to print, specify the number of copies to print, and select a layout. For more information, see **print a proof sheet** on page 27.

### print a photo index page

The photos appear on the photo index page in the order in which they are stored on the memory card. Depending on the number of photos stored on the memory card, a photo index page could be several pages long. To accommodate the maximum number of photos on each photo index page, the printer may change the orientation of the photos.



**Note:** The index number on the photo index page may be different than the index number associated with the photo in your digital camera.

**To print a photo index page:**

- 1 Insert a memory card into your printer. The printer's LCD screen displays:



- 2 Press the **PRINT** button.

Index numbers appear in the lower-left corner of each thumbnail. Use the index numbers to specify which photos to print. If you use your digital camera or computer to add or delete photos from the memory card, the index numbers of the photos may change. Reprint a photo index page to see the new index numbers.

For information about printing photos, see **print from a memory card** on page 29.

**print a proof sheet**

Proof sheets make deciding which photos to print easy. After you print the proof sheet, mark the proof sheet using a black pen to select which photos to print, and then feed the marked proof sheet into the printer to be scanned. The printer reads your proof sheet and prints the photos you selected.

A proof sheet differs from a photo index page because it provides spaces for you to select photos to print, specify the number of copies to print, and select a layout. These selections can then be scanned by the printer, providing a simple and convenient way to order and make prints directly from a memory card.

You can also use the photo number on the proof sheet to select which photos to print. The photo number on the proof sheet may be different than the photo number associated with the photo on your digital camera. If you add or delete photos from your memory card, reprint the proof sheet to see the new photo numbers.

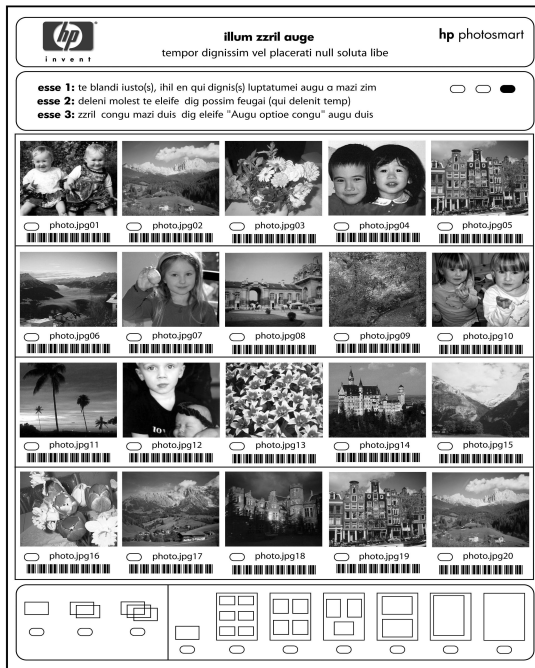
Printing a proof sheet is the first step in deciding which photos to print from a proof sheet. After you print a proof sheet, select specific photos, scan your proof sheet, and print your selected photos.

**To print a proof sheet:**

- 1 Make sure that the memory card is inserted into the appropriate slot.
- 2 Make sure that paper is loaded in the In tray.
- 3 Press the **MENU** ◀ or ▶ button until **PRINT PROOF SHEET?** appears on the printer's LCD screen, and then press the **OK** button.
- 4 Press the **MENU** ◀ or ▶ button to select from the following:
  - **New photos**—To print a proof sheet of any photos that were not previously printed from the control panel, and then press the **OK** button.
  - **All photos**—To print a proof sheet of all photos on the memory card, and then press the **OK** button.

## 5 Press the **OK** button to print the proof sheet.

After you print a proof sheet, you can use it to select specific photos from your memory card.



### To select photos from a proof sheet:

- 1 Select the photos you want to print by filling in the circles located underneath each photo with a dark pen.
- 2 Select only one choice in the number of copies and layout sections.

If you make more than one selection in any of these areas, scanning the proof sheet generates an error. Print a new proof sheet and start over.

After you select photos on a proof sheet, you can use it to print specific photos from your memory card.

### To scan a proof sheet:

- 1 Insert the proof sheet face down in the In tray with the top of the proof sheet feeding into the printer.
- 2 Make sure that the memory card is inserted into the appropriate slot.
- 3 On the printer's control panel, press the **MENU** ◀ or ▶ button until **SCAN PROOF SHEET?** appears on the printer's LCD screen, and then press the **OK** button.
- 4 Press the **OK** button.

The printer scans the proof sheet.



- 5 Load the correct paper for printing your photos in the In tray, and then press the **OK** button.

**Note:** The printer can only scan one proof sheet at a time. Repeat steps 1–5 for each proof sheet to scan.

For more information about printing photos, see **print from a memory card** on page 29.

## print from a memory card

Your printer can print digital photos that are stored on your memory card. Digital photos may be unmarked or camera-selected. For a list of supported digital photo file types, see **specifications** on page 52.

### print unmarked photos on a memory card

Unmarked digital photos are standard digital photos that you stored on the memory card but have not marked for printing.

**Note:** Not all digital cameras allow you to mark your photos for printing.

#### To print unmarked photos on a memory card:

- 1 Insert the memory card into the printer's memory card slot.
- 2 Press the **SELECT PHOTOS** ◀ or ▶ button to navigate through the photos on the memory card.
- 3 Press the **OK** button when the number of the photo you want to print appears on the printer's LCD screen.
- 4 (Optional) Repeat steps 2 and 3 to select additional photos for printing.
- 5 Press the **OK** button again. A message appears on the printer's LCD screen indicating the number of photos selected.

**Note:** At this point, you can print multiple copies of the selected photos. You can also change the default size of the selected photos. For more information, see the HP Photosmart Printer Help. For information about viewing the Help, see **view the hp photosmart printer help** on page 2.

- 6 Press the **PRINT** button to start printing.

### print camera-selected photos on a memory card

Camera-selected photos are photos you marked for printing using your digital camera. When you select photos using your camera, the camera creates a Digital Print Order Format (DPOF) file that identifies which photos have been selected for printing.

Your printer can read the DPOF file from the memory card so you do not have to reselect the photos to print. Review the documentation that came with your digital camera to see if it supports camera-selected photos. Your printer supports DPOF file format 1.1.

**Note:** Not all digital cameras allow you to mark your photos for printing.

### To print camera-selected photos on a memory card:

- 1 Use your digital camera to select the photos you want to print. For more information, see the documentation that came with your camera.
- 2 Insert the memory card into the printer's memory card slot.  
The printer automatically recognizes the camera-selected photos on the memory card and asks if you want to print them.
- 3 Press the **OK** button.

### print new photos

You can print all the photos on the memory card that were not previously printed from the printer's control panel.

### To print all new photos on a memory card:

- 1 Insert a memory card into the printer.
- 2 Press the **COPIES +** or **-** button until the number of copies you want to print appears on the printer's LCD screen.
- 3 Press the **SIZE +** or **-** button until the size you want to print appears.
- 4 Press the **PRINT NEW PHOTOS** button to print all the photos on the memory card that were not previously printed from the printer's control panel.

# 3

## print using the direct-printing port

For quick and easy printing, your printer allows you to connect a notebook computer or an HP direct-printing digital camera to the direct-printing port located on the front of the printer.

**Note:** If your direct-printing digital camera has a docking station, you can connect the docking station to the printer's USB port. For more information, see the documentation that came with the docking station.

### connect your hp digital camera to the direct-printing port

Your printer allows you to print beautiful photos from an HP direct-printing digital camera without using your computer.

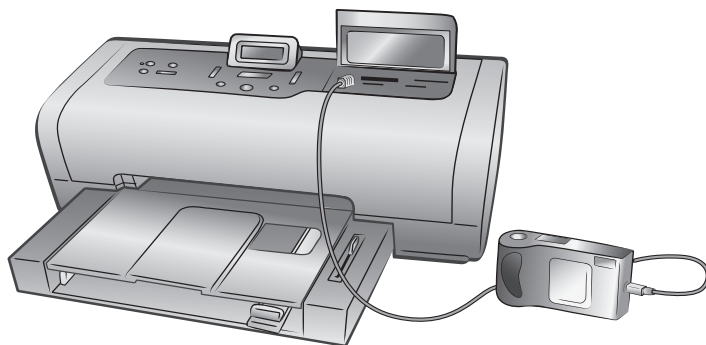
To see a list of the HP direct-printing digital cameras that work with your printer, go to **[www.hp.com/support](http://www.hp.com/support)**, select your country or region, and type **direct-printing digital cameras** in the search window.

**Note:** The printer's control panel settings are unavailable when you use direct-printing. The printer uses the settings in the camera-selected photo file.

After you use your HP direct-printing digital camera to select photos for printing, you can print your photos by connecting your camera to the direct-printing port.

#### To print by connecting your hp direct-printing digital camera to your printer:

- 1 Use the Share menu on your HP direct-printing digital camera to select the photos you want to print. For more information, see the documentation that came with your camera.
- 2 Connect the digital camera to the direct-printing port on the front of your printer using the USB cable that came with the camera. The direct-printing port is located under the input bay door, to the left of the memory card slots.



- 3 When you connect the digital camera to the printer, a Print Setup menu appears on the camera's LCD screen. Use this menu to:
  - Change which photos you have selected for printing
  - Select the paper type
  - Select the paper size
- 4 When you are ready to print, follow the instructions on your camera's LCD screen.

**Note:** For more information about using camera-selected photos, see the documentation that came with your digital camera.

For more information, see **print from a memory card** on page 29.

## connect your notebook computer to the direct-printing port

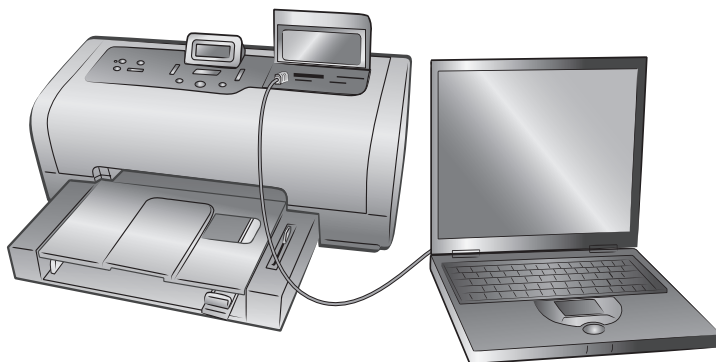
For quick and easy printing, your printer allows you to connect a notebook computer to the direct-printing port located in the front of the printer.

**Note:** To print using the direct-printing port, you must first install the HP Photosmart printer software on your notebook computer using the USB port located in the back of your printer. The first time you connect your notebook computer to the direct-printing port, your operating system will automatically reconfigure the software so you can print using that port. For information about installing the software on your notebook computer, see the *HP Photosmart Setup Guide* that came with your printer.

**Note:** To print photos or files from your notebook computer using the direct-printing port, the files must already be saved on your notebook computer. To save photos and other files from a memory card to your notebook computer, you must connect your notebook computer to the USB port located on the back of your printer.

### To print from your notebook computer:

- 1 Connect one end of a USB cable to the notebook computer, then connect the other end of the cable to the direct-printing port located on the front of the printer. The direct-printing port is located under the input bay door, to the left of the memory card slots.



- 2 Using your software application, open the file you want to print.
- 3 Follow the steps appropriate for your operating system:

**If you are using a Windows PC:**

- a. From the **File** menu of the software application, select **Print**.
- b. To access more advanced settings, click **Properties** (may be titled **Preferences** in some operating systems).
- c. Select the settings appropriate for your project and click **OK**.

**If you are using a Macintosh:**

- a. From the **File** menu of the software application, select **Page Setup**.
- b. In the **Format for** pop-up menu, select **photosmart 7600 series**.
- c. Select the page attributes (paper size, borderless or bordered photos, orientation, and scaling percentage).
- d. If you are using OS 9, the borderless option appears as a check box. If you are using OS X, the borderless options appear under the **Paper Size** pop-up menus.
- e. Click **OK**.
- f. From the **File** menu in your software application, select **Print**.
- g. Select the print settings appropriate for your project. Use the pop-up menus to open the other panels.
- h. Click **Print** (OS X) or **OK** (OS 9) to begin printing.



# 4

## print from your computer

You can use your printer with Windows PC or Macintosh software applications that allow printing. You can print a variety of projects.

If you already know how to use a printer with your computer, you are ready to begin printing as usual. If you are new to printing, or if you have questions, use this chapter to learn more.

When you print from your computer, the control panel settings on the printer do not apply; the software on your computer overrides the print settings.

### print from your Windows PC

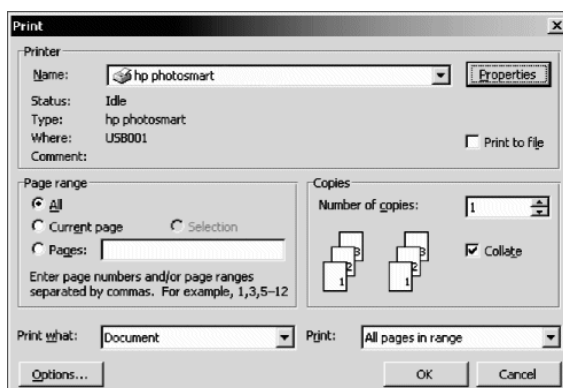
Before you begin, make sure your printer is connected to your computer, the printer software that came in the box is installed, and there is paper in the printer. For more information about setup, see the *HP Photosmart Setup Guide* that came with your printer. For information about loading paper, see **paper information** on page 8.

#### print from a software application

- 1 From the **File** menu in your software application, select **Print**.

Depending on the software application you are using and the operating system running on your computer, a Print dialog box may appear or the HP Photosmart Series Properties or Printing Preferences dialog box may appear.

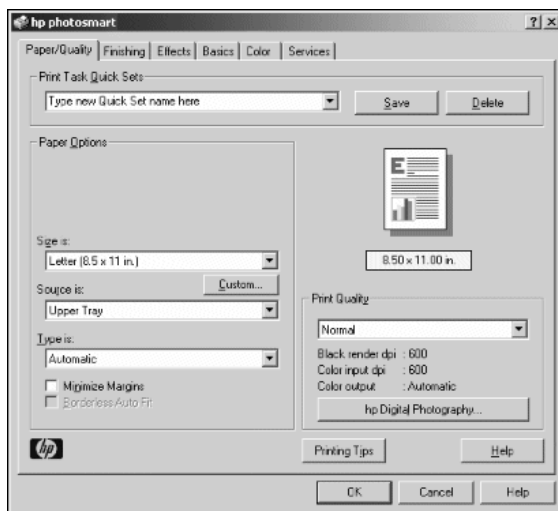
- 2 Select the pages and the number of copies you want to print.



- 3 To access the printing properties tabs, you may have to click **Properties** or **Preferences**. For information about the HP Photosmart Series printing properties, see the HP Photosmart Printer Help.

**Note:** The **Properties** button may be labeled **Preferences** and the Print dialog box may be different for each software application.

**Note:** Depending on the operating system running on your computer, the HP Photosmart Series Properties dialog box may be titled HP Photosmart Printing Preferences.



**Note:** To learn more about the available settings, click the ? in the upper-right corner of the printing properties dialog box, then click the item you want more information about. You can also click **Help**.

- 4 Click **OK** to begin printing.

### print borderless photos from your Windows PC

Borderless printing is supported for 4 x 6 inch photo paper (100 x 150 mm), 8.5 x 11 inch (216 x 280 mm) paper, L-size paper (3.5 x 5 inches, 90 x 127 mm), and Hagaki cards (3.9 x 5.8 inches, 100 x 148 mm).

**Note:** HP does not recommend printing borderless photos on plain paper. For more information about recommended paper types, see **recommended paper** on page 51.

**Note:** To print borderless photos from your computer, you must print from a software application that supports borderless printing. HP recommends using the HP Photo & Imaging software that you installed with your printer to achieve true borderless results. If you print using other imaging software, you may have to adjust the photo scaling to achieve borderless results.

#### To print borderless photos from your Windows PC:

- 1 Open the photo in a software application and from the **File** menu, select **Print**.
- 2 On the Print dialog box, click **Properties** or **Preferences** to access the HP Photosmart Series printing properties.



- 3 From the **Size is** list on the Paper/Quality tab, select a borderless paper size. Borderless paper sizes are clearly marked *Borderless* on the list.
- 4 Select other settings appropriate for your project, and then click **OK** to return to the Print dialog box.
- 5 Click **OK** to begin printing.

### use the Windows PC taskbar icons

After you install the printer software, two icons appear on the Windows taskbar:

- **hp photosmart printer icon** 
- **hp photosmart memory card icon** 

These icons help you perform a variety of tasks.



Printer icon

Memory card icon

#### hp photosmart printer icon

Use the HP Photosmart printer icon on the Windows taskbar to open the HP Photosmart Series Properties dialog box, select a default printer, or open the HP Photosmart Series Toolbox.




- When you click the printer icon, the printing properties dialog box appears.
- When you right-click the printer icon, a menu appears. Make your selection from the following menu items:
  - **Change default print settings** – Click to open the printing properties dialog box.
  - **Open HP Photosmart Series Toolbox** – Click to open the HP Photosmart Series Toolbox.
  - **HP Photosmart Series** – Select the HP Photosmart Series printer you want to use from the list of installed printers. A check mark indicates the currently selected printer.
  - **Exit** – Click to close the menu and remove the printer icon from the taskbar. Restart your computer to make these icons appear again. To close the menu without removing the printer icon from the taskbar, click anywhere outside the menu.

For more information, see **hp photosmart memory card icon** on page 38.

## hp photosmart memory card icon

Use the HP Photosmart memory card icon to determine the status of your printer, access the files stored on your memory card, and display connection messages on your computer screen.

The appearance of the icon tells you the status of the printer:

	When the memory card icon is green, a memory card is inserted in the printer and the printer is ready to access the files stored on the memory card.
	When the memory card icon is gray, a memory card is not inserted in the printer.
	When a red “x” appears on the memory card icon, the connection between the printer and the computer has been lost. To print from the computer you must re-establish communication. For information about re-establishing communication, see <b>error messages</b> on page 48.

When you right-click the memory card icon, a menu appears. Make your selection from the following menu items:

- **Open F: HP Photosmart Series**—Click to open Windows Explorer, where you can move, copy, delete, or open files. You can also double-click the memory card icon to open Windows Explorer. Note that “F:” may not be the drive assigned by your computer.
- **Prepare to remove card**—Click to prepare the memory card for safe removal from the printer.
- **Show disconnect warning**—Click if you want a warning message to appear when the printer loses communication or attempts to regain communication with your computer. A check mark indicates that a connection message will appear.
- **Show safe to remove card message**—Click if you want a message to appear notifying you when it is safe to remove the memory card from the printer. A check mark indicates that a message will appear.

For more information, see **hp photosmart printer icon** on page 37.

## print from your Macintosh

Before you begin, make sure your printer is connected to your computer, the printer software that came in the box is installed, and there is paper in the printer. For more information about setup, see the *HP Photosmart Setup Guide* that came with your printer. For information about loading paper, see **paper information** on page 8.

**Note:** HP does not recommend printing borderless photos on plain paper. For more information about recommended paper types, see **recommended paper** on page 51.

**Note:** To print borderless photos from your computer, you must print from a software application that supports borderless printing. If you are using OS X, HP recommends using the iPhoto application that came with the operating system.

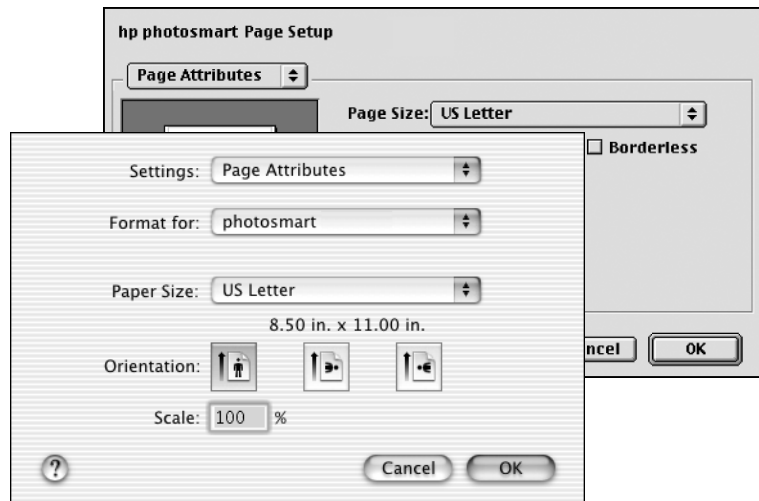
### print from a software application (OS X or OS 9)

**Note:** The following steps are specific to OS X. For OS 9, the steps may be slightly different. Be sure you have selected your HP Photosmart printer in the Print Center (OS X) or in the Chooser (OS 9) before you begin printing. For more information, see the reference guide that came with your printer.

- 1 From the **File** menu in your software application, select **Page Setup**.

The Page Setup dialog box appears.

- 2 In the **Format for** pop-up menu, select **photosmart 7600 series**.



- 3 Select the page attributes:
  - Select the paper size.
  - Select whether you would like to print borderless or bordered photos.

If you are using OS 9, the borderless option appears as a check box. If you are using OS X, the borderless options appear under the **Paper Size** pop-up menus.

- Select the orientation.
- Enter the scaling percentage.

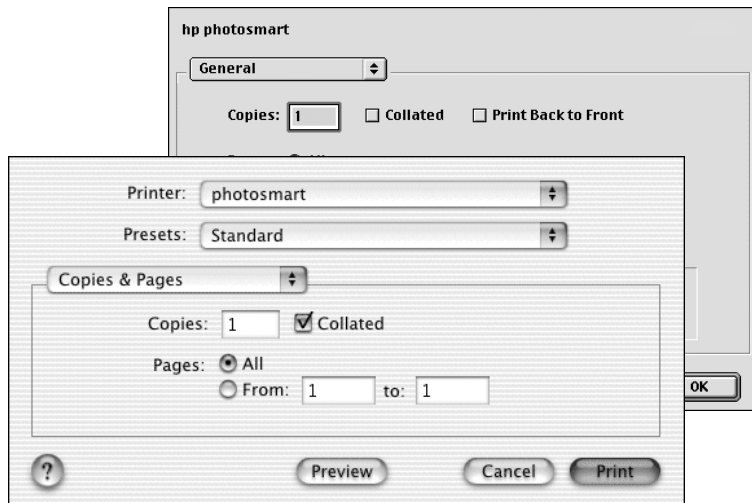
4 Click **OK**.

5 From the **File** menu in your software application, select **Print**.

The Print dialog box appears.

**Note:** If you are using OS X, the Copies & Pages panel opens. If you are using OS 9, the General panel opens.

6 Select the print settings appropriate for your project. Use the pop-up menus to open the other panels.



**Note:** To learn more about the settings, click the ? in the lower-left corner of the dialog box (OS X only).

7 Click **Print** (OS X) or **OK** (OS 9) to begin printing.

# 5 troubleshooting

Your HP Photosmart printer is designed to be reliable and easy to use. This section answers frequently asked questions and contains information about the following topics:

- hardware problems
- printing problems
- error messages

For more troubleshooting information about software installation, see the reference guide that came with your printer. For advanced troubleshooting information, view the HP Photosmart Printer Help that you installed with your printer software. For information about viewing the help, see **view the hp photosmart printer help** on page 2.

## hardware problems

Before contacting HP support, read this section for troubleshooting tips or go to the online support services at **[www.hp.com/support](http://www.hp.com/support)**.

**Note:** HP recommends using a USB cable of less than 10 feet (3 meters) in length to minimize injected noise due to potential high magnetic fields.

Problem	Possible cause	Solution
The On/Attention light is blinking green but the printer is not printing.	The printer is processing information.	Wait a moment for the printer to finish processing the information.
The On/Attention light is blinking red.	The printer requires attention.	Try the following: <ul style="list-style-type: none"><li>• Check the printer's LCD screen and the computer monitor for instructions.</li><li>• If you have a digital camera connected to the printer, check the camera's LCD screen for instructions.</li><li>• If this does not work, turn off the printer. Unplug the printer's power cord, wait one minute, then plug it in again. Turn on the printer.</li></ul>

Problem	Possible cause	Solution
The On/Attention light is blinking amber.	An unrecoverable error has occurred.	Turn off the printer. Unplug the printer's power cord, wait one minute, then plug it in again. Turn on the printer. If this does not work, go to <a href="http://www.hp.com/support">www.hp.com/support</a> or contact HP support.

## printing problems

Before contacting HP support, read this section for troubleshooting tips or go to the online support services at [www.hp.com/support](http://www.hp.com/support).

**Note:** In the presence of high electromagnetic fields, printed documents and photos may be slightly distorted.

Problem	Possible cause	Solution
The printer does not generate borderless photo output.	You need to select the appropriate paper size.	Select the paper size from your printer's control panel. For more information, view the HP Photosmart Printer Help that you installed with your printer software.
Printing is very slow. (Continued on next page.)	Your computer may have less than the recommended system requirements.	Check the amount of RAM (system memory), the processor speed, and the amount of free hard disk space on your computer. Having less than 500 MB of free space on your computer's hard disk can extend processing time. For information about system requirements, view the HP Photosmart Printer Help that you installed with your printer software.
	Too many software programs may be running at the same time.	Close all unnecessary software programs.
	You may be using outdated printer software.	Update the version of the printer software you are using. For more information, see the HP Photosmart Printer Help. For information about viewing the printer help, see <b>view the hp photosmart printer help</b> on page 2.

Problem	Possible cause	Solution
<i>(Continued from previous page.)</i>	You may have chosen <b>Maximum dpi</b> (Windows) or <b>High Resolution</b> (Macintosh).	<b>Windows PC</b> <ol style="list-style-type: none"> <li>1 Open the printing properties dialog box. For more information, see <b>print from a software application</b> on page 35.</li> <li>2 Select the <b>Paper/Quality</b> tab.</li> <li>3 Set the Print Quality to <b>Best</b> instead of <b>Maximum dpi</b>.</li> <li>4 Try printing again.</li> </ol> <b>Macintosh</b> <ol style="list-style-type: none"> <li>1 On the Paper Type/Quality panel in the Print dialog box, deselect <b>High Resolution</b>.</li> <li>2 Try printing again.</li> </ol>
Photo paper does not feed into the printer correctly.	The photo tray may not be engaged.	Engage the photo tray by gently pushing the photo tray slider towards the printer.
	The photo paper guides may not be adjusted correctly.	Make sure that the photo paper width guide and the photo paper length guide fit close to the edges of the paper without bending the paper.
	Your printer may be in an extremely high or low humidity environment.	Try the following: <ul style="list-style-type: none"> <li>• Insert the photo paper as far as it will go into the photo tray.</li> <li>• Load one sheet of photo paper at a time.</li> </ul>
	The photo paper may be curled.	If the photo paper is curled, place the paper in a plastic bag and gently bend it the opposite direction of the curl until the paper lies flat. If the problem persists, then use photo paper that is not curled.
Paper does not feed into the printer correctly. OR Paper does not come out of the printer correctly. <i>(Continued on next page.)</i>	There may be too much paper loaded in the In tray.	Remove some paper from the In tray and try printing again. For paper-loading instructions, see <b>load paper in the in tray</b> on page 8.

Problem	Possible cause	Solution
<i>(Continued from previous page.)</i>	The paper guides may not be adjusted correctly.	Make sure that the paper width guide and the paper length guide fit close to the edges of the paper without bending the paper.
	Two or more pieces of paper are stuck together	Remove the paper from the paper tray and fan the stack of paper so the sheets do not stick together. Reload the paper into the paper tray and try printing again. For paper-loading instructions, see <b>paper information</b> on page 8.
The printer does not print new photos on the memory card.	There are no new photos on the memory card or the photos have already been printed.	Select and print the desired photos. For more information, see <b>print new photos</b> on page 30.



Problem	Possible cause	Solution
No page came out of the printer.	The paper jammed while printing.	<p>Try the following:</p> <ul style="list-style-type: none"> <li>• Check the printer's LCD screen for instructions.</li> <li>• Remove the paper from the In tray and the paper catch.</li> <li>• If you were printing labels, make sure a label did not become unglued from the label sheet while going through the printer.</li> </ul> <p>If the paper is still jammed, try the following:</p> <ol style="list-style-type: none"> <li>1 Turn off the printer.</li> <li>2 Unplug the printer.</li> <li>3 Open and remove the rear access door.</li> <li>4 Gently remove the jammed paper from the printer, then replace the rear access door.</li> <li>5 Plug the printer back in and turn it on.</li> <li>6 When you have cleared the paper jam, print your document again.</li> </ol> <p>If you experience paper jams when printing on photo paper, try the following:</p> <ul style="list-style-type: none"> <li>• Make sure that the photo paper width guide and the photo paper length guide fit close to the edges of the paper without bending the paper.</li> <li>• Engage the photo tray by gently pushing the photo tray slider until it stops.</li> <li>• Load one sheet of photo paper at a time.</li> </ul>

Problem	Possible cause	Solution
The document printed at an angle or is off-center.	The paper may not be loaded correctly.	<p>Try the following:</p> <ul style="list-style-type: none"> <li>• Make sure the paper is correctly oriented in the In tray.</li> <li>• Make sure the paper width guide and the paper length guide fit close to the edges of the paper.</li> </ul> <p>For paper-loading instructions, see <b>load paper in the in tray</b> on page 8.</p>
	The print cartridges may not be properly calibrated.	<p><b>Windows PC</b></p> <ol style="list-style-type: none"> <li>1 Open the HP Photosmart Series Toolbox.</li> <li>2 Go to the <b>Device Services</b> tab in the HP Photosmart Toolbox and click <b>Calibrate the Device</b>.</li> </ol> <p><b>Macintosh</b></p> <ol style="list-style-type: none"> <li>1 Open the HP Inkjet Utility.</li> <li>2 Go to the <b>Calibrate</b> panel in the HP Inkjet Utility and click <b>Align</b>.</li> </ol> <p>For more information, view the HP Photosmart Printer Help that you installed with your printer software.</p>
Print quality is poor. (Continued on next page.)	You may be printing in Ink-backup Printing Mode. The printer enters Ink-backup Printing Mode when one of the print cartridges is missing.	<p>Replace the missing print cartridge with a new one. For more information, see <b>install or replace print cartridges</b> on page 12.</p> <p>For more information about printing in Ink-backup printing mode, view the HP Photosmart Printer Help that you installed with your printer software.</p>

Problem	Possible cause	Solution
(Continued from previous page.)	One of the print cartridges may be running out of ink.	<p>Print a test page. For more information, view the HP Photosmart Printer Help that you installed with your printer software.</p> <p>OR</p> <p><b>Windows PC</b></p> <p>Check the ink levels of the print cartridges from the Estimated Ink Level tab in the HP Photosmart Toolbox.</p> <p><b>Macintosh</b></p> <p>Check the ink level status in the HP Inkjet Utility.</p> <p>If a print cartridge is running low on ink, replace it.</p> <p>For more information, view the HP Photosmart Printer Help that you installed with your printer software.</p>
	You may not be using the best paper type for your output.	<p>Try the following:</p> <ul style="list-style-type: none"> <li>• Make sure you are using a paper type intended for the printer. Use HP-designed inkjet paper for best results.</li> <li>• Choose paper that is specifically designed for the output (photographs, transparencies, etc.) rather than plain paper.</li> </ul>
	You may be printing on the wrong side of the paper.	Make sure the paper is loaded with the side to be printed facing down.

Problem	Possible cause	Solution
(Continued from previous page.)	You may not have selected the correct paper type in the printer software.	<b>Windows PC</b> Make sure you have selected the correct paper type on the Paper/Quality tab in the printing properties dialog box.  <b>Macintosh</b> Make sure you have selected the correct paper type on the Paper Type/Quality panel in the Print dialog box. For more information, view the HP Photosmart Printer Help that you installed with your printer software.
	You may need to clean the print cartridges.	Clean the print cartridges from the printer's control panel. For more information, view the HP Photosmart Printer Help that you installed with your printer software.
I selected photos to print using the numbers on the digital camera's LCD screen, but they did not print. Different photos printed instead.	Your digital camera may assign numbers to your photos that do not match the numbers that the printer assigns to them.	Print an index page. Select photos to print using the index numbers shown on the photo index page. For more information, see <b>print a photo index page</b> on page 26.

## error messages

Before contacting HP support, read this section for troubleshooting tips or go to the online support services at [www.hp.com/support](http://www.hp.com/support).

Message	Possible cause	Solution
PAPER JAM. CLEAR JAM THEN PRESS OK.	The paper jammed while printing.	For more information, see the instructions for <b>clearing a paper jam</b> on page 45.
UNSUPPORTED MEDIA SIZE.	Your printer does not support the provided paper size.	1 Press the <b>OK</b> button to clear the error message. 2 Load the correct paper size in the paper tray. For more information about supported sizes, see <b>recommended paper</b> on page 51. 3 Try printing again.

Message	Possible cause	Solution
CARD INSERTED INCORRECTLY. GOLD LABEL SHOULD FACE DOWN.	Your SmartMedia memory card is inserted upside down.	Gently pull the memory card out and reinsert it properly. For instructions on inserting memory cards, see <b>insert a memory card</b> on page 22.
AUTOMATIC PAPER SENSOR FAILED	The automatic paper sensor is obstructed or damaged.	Try the following: <ul style="list-style-type: none"> <li>• Press the <b>OK</b> button and try printing again.</li> <li>• Make sure the printer is not in direct sunlight.</li> </ul> If this does not work, go to <b>www.hp.com/support</b> or contact HP support.
ONE OR MORE CARTRIDGES HAVE FAILED. REMOVE ALL CARTRIDGES, THEN REINSERT EACH CARTRIDGE BY ITSELF AND CLOSE THE COVER TO SEE IF IT HAS FAILED.	One or both of the print cartridges is old or damaged.	Test both print cartridges to see if one or both of the print cartridges failed. For more information, see <b>install or replace print cartridges</b> on page 12 or view the HP Photosmart Printer Help that you installed with your printer software.
CARTRIDGE SERVICE STATION IS STUCK.	There is an obstruction blocking the path of the cartridge service station.	Clear any obstruction and press the <b>OK</b> button to continue.
PRINT CARTRIDGE JAM. CLEAR JAM THEN PRESS OK.	The print cartridge cradle is stuck.	Clear any obstruction in the cradle path, and press the <b>OK</b> button to continue. The current page will eject and the print project will continue on the next available sheet of paper.
CARD INSERTED INCORRECTLY. GOLD LABEL SHOULD FACE DOWN.	Your SmartMedia memory card is inserted upside down.	Gently pull the memory card out and reinsert it properly. For instructions on inserting memory cards, see <b>insert a memory card</b> on page 22.



# 6

## specifications

This chapter lists recommended papers for your printer and provides selected printer specifications.

**Note:** For a complete list of printer specifications and system requirements, see the HP Photosmart Printer Help.

### recommended paper

For a list of available HP-designed inkjet papers, or to purchase supplies, go to:

- [www.hpshopping.com](http://www.hpshopping.com) (U.S.)
- [www.hp-go-supplies.com](http://www.hp-go-supplies.com) (Europe)
- [www.hp.com/paper](http://www.hp.com/paper) (Asia/Pacific)
- [www.jpn.hp.com/supply/inkjet](http://www.jpn.hp.com/supply/inkjet) (Japan)

**Note:** You can also purchase HP-designed inkjet paper at most computer and office supply stores.

HP photo papers	Best for	Sizes
HP premium plus photo paper	<ul style="list-style-type: none"> <li>• 4 x 6 inch (10 x 15 cm) borderless prints</li> <li>• High-value prints</li> <li>• Important photos</li> <li>• High-resolution images from scanners or digital cameras</li> <li>• Photo enlargements or reprints to frame or give as gifts</li> </ul>	Letter (8.5 x 11 inches, 216 x 280 mm) A4 (8.27 x 11.7 inches, 210 x 297 mm) 4 x 6 inches with 0.5 inch tab (10 x 15 cm with 1.25 cm tab) 4 x 6 inches (10 x 15 cm)
HP premium photo paper	<ul style="list-style-type: none"> <li>• Making and sharing photos with friends and families</li> <li>• Medium- to high-resolution images from scanners and digital cameras</li> <li>• Medium value prints from parties, team events, or celebrations</li> </ul>	Letter (8.5 x 11 inches, 216 x 280 mm) A4 (8.27 x 11.7 inches, 210 x 297 mm) 4 x 6 inches with 0.5 inch tab (10 x 15 cm with 1.25 cm tab)
HP photo paper	<ul style="list-style-type: none"> <li>• Casual photos or high-volume photos</li> <li>• School or business reports, photo projects</li> <li>• Business applications: real-estate proposals, sales and marketing materials</li> </ul>	Letter (8.5 x 11 inches, 216 x 280 mm) A4 (8.27 x 11.7 inches, 210 x 297 mm) 4 x 6 inches with 0.5 inch tab (10 x 15 cm with 1.25 cm tab)

HP photo papers	Best for	Sizes
HP everyday photo paper	<ul style="list-style-type: none"> <li>• Everyday photos, short-term, or one-time uses</li> <li>• E-mail or internet photos for bulletin boards or refrigerators</li> <li>• Kid's photos</li> <li>• Testing and proofing</li> </ul>	Letter (8.5 x 11 inches, 216 x 280 mm) A4 (8.27 x 11.7 inches, 210 x 297mm)

## specifications

When your printer is connected to your computer, it supports the media types listed in this section.

When your printer is not connected to your computer and you use it to print directly from a memory card or an HP direct-printing digital camera, it supports the following paper:

- In the In tray:
  - Letter-size paper (8.5 x 11 inches, 216 x 280 mm)
  - A4 paper (8.27 x 11.7 inches, 210 x 297mm)
- In the photo tray:
  - 4 x 6 inch (10 x 15 cm) photo paper with a 0.5 inch (1.25 cm) tab
  - 4 x 6 inch (10 x 15 cm) photo paper
  - L-size cards (3.5 x 5 inches, 90 x 127 mm) with a 0.5 inch (12.5 mm) tab
  - L-size cards (3.5 x 5 inches, 90 x 127 mm)

For system requirements and additional printer specifications, view the HP Photosmart Printer Help that you installed with your printer software.

### Connectivity, maximum

HP JetDirect External Print Servers: 175x, 310x, 380x

### Connectivity, standard

USB: Front and back ports  
 Windows 98, 2000 Professional, ME, XP Home, and XP Professional  
 Mac® OS 9 v9.1 or later, OS X v10.1 through v10.2

### Dimensions

17.8 x 14.7 x 6.9 inches (452.2 x 374.4 x 175.5 mm)



<b>Image file formats</b>	JPEG Baseline
	TIFF 24-bit RGB uncompressed interleaved
	TIFF 24-bit YCbCr uncompressed interleaved
	TIFF 24-bit RGB packbits interleaved
	TIFF 8-bit gray uncompressed/packbits
	TIFF 8-bit palette color uncompressed/packbits
<b>In tray capacity</b>	TIFF 1-bit uncompressed/packbits/1D Huffman
	25 sheets of photo paper
	100 sheets of plain paper
	20–40 cards (depending on thickness)
	15 envelopes
	20 sheets of banner paper
<b>Media sizes</b>	20 sheets of labels
	25 transparencies
	25 sheets of iron-on transfers
	Photo paper (4 x 6 inches, 10 x 15 cm)
	Photo paper with tab (4 x 6 inches with 0.5 inch tab, 10 x 15 cm with 1.25 cm tab)
	Index cards (4 x 6 inches, 10 x 15 cm)
<b>Media specifications, maximum</b>	Hagaki cards (3.9 x 5.8 inches, 100 x 148 mm)
	A6 cards (4.1 x 5.8 inches, 105 x 148 mm)
	L-size cards (3.5 x 5 inches, 90 x 127 mm)
	L-size cards with tab (3.5 x 5 inches with 0.5 inch tab, 90 x 127 mm with 12.5 mm tab)
	Banner paper (8.5 x 234 inch, 216 x 5969 mm)
	Recommended maximum length: 14 inches (356 mm)
	Recommended maximum thickness: 11.5 mil (292 $\mu$ m) per sheet

**Media sizes, standard Photo paper**

3 x 3 inches to 8.5 x 14 inches (76 x 76 mm to 216 x 356 mm)

**Plain paper**

Letter, 8.5 x 11 inches (216 x 280 mm)

Legal, 8.5 x 14 inches (216 x 356 mm)

Executive, 7.5 x 10 inches (190 x 254 mm)

A4, 8.27 x 11.7 inches (210 x 297 mm)

A5, 5.8 x 8.3 inches (148 x 210 mm)

B5, 6.9 x 9.8 inches (176 x 250 mm)

**Cards**

Hagaki, 3.9 x 5.8 inches (100 x 148 mm)

L-size, 3.5 x 5 inches (90 x 127 mm)

L-size with tab, 3.5 x 5 with 0.5 inch tab (90 x 127 mm with 12.5 mm tab)

Index, 3 x 5 inches, 4 x 6 inches, and 5 x 8 inches (76 x 127 mm, 10 x 15 cm, and 127 x 203 mm)

A6, 4.13 x 5.8 inches (105 x 148 mm)

**Envelopes**

No. 9, 3.875 x 8.875 inches (98.4 x 225.4 mm)

No. 10, 4.125 x 9.5 inches (105 x 240 mm)

A2 Invitation, 4.375 x 5.75 inches (110 x 146 mm)

DL, 4.33 x 8.66 inches (110 x 220 mm)

C6, 4.5 x 6.4 inches (114 x 162 mm)

**Custom**

3 x 5 inches to 8.5 x 14 inches (76 x 127 mm to 216 x 356 mm)

**Transparencies**

Letter, 8.5 x 11 inches (216 x 280 mm)

A4, 8.27 x 11.7 inches (210 x 297 mm)

**Label sheets**

Letter, 8.5 x 11 inches (216 x 280 mm)

A4, 8.27 x 11.7 inches (210 x 297 mm)

**Media types**

Paper (plain, inkjet, photo, and banner)

Envelopes

Transparencies

Labels

Cards (index, greeting, Hagaki, A6, L-size)

Iron-on transfers

**Memory cards**

CompactFlash Type I and II

IBM Microdrive

MultiMediaCard

Secure Digital

SmartMedia

Sony Memory Sticks

xD-Picture Card

<b>Memory card-supported file formats</b>	Printing: See <b>Image file formats</b> on page 53 Saving: All file formats
<b>Output tray capacity</b>	20 sheets of photo paper 50 sheets of plain paper 10 cards 10 envelopes 20 transparencies 20 sheets of banner paper 25 sheets of labels 25 sheets of iron-on transfers
<b>Paper trays</b>	One letter-size tray One 4 x 6 inch (10 x 15 cm) photo tray
<b>Photo tray capacity</b>	15 sheets of photo paper
<b>Print cartridges</b>	1 black HP #56 (C6656A) 1 tri-color HP #57 (C6657A) 1 color photo HP #58 (C6658A) 1 gray photo HP #59 (C9359A)
<b>USB support</b>	USB: Front and back ports Windows 98, 2000 Professional, ME, XP Home, and XP Professional Mac OS 9 v9.1 or later, OS X v10.1 through v10.2 HP recommends that the USB cable be less than 10 feet (3 meters) in length





## A

- accessory
  - supported 8
- adjust photo brightness 16

## B

- borderless photos 9, 17, 36, 39
- brightness
  - adjust 16
- button
  - Cancel 5
  - Copies 5
  - Menu 5
  - OK 5
  - On 5
  - Print 5
  - Print New Photos 5
  - Save 5
  - Select Photos 5
  - Size 5

## C

- camera, digital
  - troubleshooting printing
    - from 48
- camera-selected photos 30
- Cancel button 5
- capacity
  - in tray 53
  - out tray 55
  - photo tray 55
- cards, memory 6
  - insert 22
  - remove 25
  - supported 21, 54
- cartridges
  - install print 12
  - protector 15
  - remove print 14
  - store print 14
  - supported print 11, 55
- connect, direct 32
- control panel illustration 5
- Copies button 5
- country/region, set 20
- cover location 4

## D

- date and time stamp, set 17

- default settings 20
- digital camera
  - troubleshooting printing
    - from 48

- dimensions, printer 52
- direct connect 32
- direct printing port location 6
- DPOF 29

## E

- error messages 48
- Exif printing 18

## F

- factory default settings 20
- file formats supported 53

## G

- guide
  - paper length location 4
  - paper width location 4

## I

- icon
  - memory card 38
  - printer 37
  - Windows taskbar 37
- image formats, supported 53
- in tray
  - capacity 53
  - load paper 8
  - location 4
- index, print photo 26
- indicator lights 6
- ink cartridges. See print cartridges.
- ink-backup printing mode 15
- input bay
  - location 4
- insert memory cards 22
- install print cartridges 12

## J

- jam, clear paper 48

## L

- language, set 20
- laptop. See notebook computer.
- LCD screen

- location 4
  - set language and country/
    - region for 20

## Lights

- indicator 6
- location
  - direct printing port 6
  - in tray 4
  - input bay 4
  - LCD screen 4
  - memory card slots 6
  - out tray 4
  - paper catch 4
  - paper length guide 4
  - paper width guide 4
  - photo tray 4
  - power cord connection 5
  - rear access door 5
  - top cover 4
  - USB port 5

## M

- media supported 53, 54
- memory cards
  - icon 38
  - insert 22
  - print photos from 29
  - remove 25
  - slot location 6
  - supported 21, 54
- menu
  - adjust photo brightness 16
  - date and time stamp 17
  - Exif printing 18
  - factory default settings 20
  - print borderless photos 17
  - print quality 19
  - select paper settings 19
  - set LCD screen language
    - and country/region 20
  - structure 7
- Menu button 5
- messages, error 48

## N

- notebook computer, print
  - directly from 32

## O

- OK button 5
- On button 5
- out tray
  - capacity 55
  - location 4

## P

- paper
  - clear jam 48
  - load in photo tray 9
  - load in tray 8
  - select settings 19
  - set print quality 19
  - where to buy 8
- paper catch
  - location 4
- paper length guide
  - location 4
- paper width guide
  - location 4
- photo tray
  - capacity 55
  - load paper 9
  - location 4
- photos
  - adjust brightness 16
  - borderless 9, 17, 36, 39
  - print from memory card 29
  - print index 26
  - print new 30
  - print proof sheet 27
  - save 26
  - scan proof sheet 28
  - select from proof sheet 28
  - set date and time stamp 17
- port
  - direct printing 6
  - USB location 5
- power cord connection
  - location 5
- preferences
  - set 16
- print
  - borderless photos 17
  - camera-selected photos 30
  - direct from notebook
    - computer 32
  - Exif printing 18
  - from memory card 29
  - from software
    - application 35, 39

- ink-backup mode 15
- new photos 30
- photo index page 26
- photo proof sheet 27
- photos from proof sheet 28
- troubleshooting 42
- troubleshooting quality 46
- troubleshooting slow
  - printing 42

- Print button 5
- print cartridges
  - install 12
  - protector 15
  - remove 14
  - store 14
  - supported 11, 55
- Print New Photos button 5
- printer
  - control panel 5
  - control panel illustration 5
  - dimensions 52
  - icon 37
  - indicator lights 6
  - menu 7
  - set preferences 16
- problems
  - print quality 46
  - printing from digital
    - camera 48
- proof sheet
  - print photo 27
  - scan 28
  - select photos from 28
- protector
  - print cartridges 15

## R

- rear access door
  - location 5
- remove
  - memory cards 25
  - photo tray 9
  - print cartridges 14
- replace print cartridges 12
- revert to factory default
  - settings 20

## S

- Save button 5
- select
  - paper settings 19
  - photos from proof sheet 28
- Select Photos button 5

## set

- date and time stamp 17
- Exif printing 18
- print quality 19
- printer preferences 16
- Size button 5
- sizes
  - supported media 53
- slot location 6
- slow printing,
  - troubleshooting 42
- software
  - print from application 35, 39
- store print cartridges 14
- supported
  - image formats 53
  - media 53, 54
  - memory cards 21, 54
  - paper accessory 8
  - print cartridges 11, 55

## T

- taskbar icons, Windows 37
- top cover location 4
- tray
  - in capacity 53
  - in location 4
  - load in 8
  - load photo 9
  - out capacity 55
  - out location 4
  - photo capacity 55
  - photo location 4
  - remove photo 9
- troubleshooting
  - clear paper jam 48
  - error messages 48
  - print quality 46
  - printing 42
  - printing from digital
    - camera 48
  - slow printing 42
- types, supported media 54

## U

- USB port location 5

## W

- Windows taskbar icons 37



## DECLARATION OF CONFORMITY

according to ISO/IEC Guide 22 and EN 45014

**Manufacturer's Name:** Hewlett-Packard Company

**Manufacturer's Address:** 16399 West Bernardo Drive  
San Diego CA 92127, USA

**declares, that the product**

**Regulatory Model Number (RMN):** SDGOA-0376

**Product Name:** Photosmart 7660 (Q3010A)

**Model Number(s):** Photosmart 7660 (Q3010A)

**conforms to the following Product Specifications:**

**Safety:** IEC 60950: 3<sup>rd</sup> Edition:1999  
EN 60950:2000  
UL1950/CSA22.2 No.950, 3<sup>rd</sup> Edition:1995  
NOM 019-SFCI-1993  
GB4943:2001

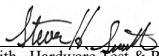
**EMC:** CISPR 22:1997 / EN 55022:1998 Class B  
CISPR 24:1997 / EN 55024:1998  
IEC 61000-3-2:1995 / EN 61000-3-2:1995  
IEC 61000-3-3:1994 / EN 61000-3-3:1995

**Supplementary Information:**

The Product herewith complies with the requirements of the Low Voltage Directive 73/23/EEC and the EMC Directive 89/336/EEC and carries the CE marking accordingly.

1) The product was tested in a typical configuration.

7 March 2003  
Date

  
Steve Smith, Hardware Test & Regs MGR.

European Contact for regulatory topics only: Hewlett Packard GmbH, HQ-TRE, Herrenberger Strasse 140,  
D-71034 Böblingen Germany. (FAX +49-7031-14-3143)



Printed on recycled paper  
Printed in U.S., 5/03



ENERGY STAR® is a U.S. registered mark.  
As an ENERGY STAR® partner,  
Hewlett-Packard Company has determined that this  
product meets the ENERGY STAR® guidelines for  
energy efficiency.

[www.hp.com](http://www.hp.com)

©2003 Hewlett-Packard Company



Q3010-90166

v 1.3.0