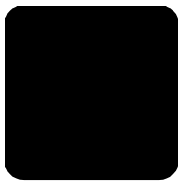


hp photosmart
7600 series



reference guide





contents

1	welcome	1
	find more information	1
	what's in the box?	2
	printer overview	3
	front	3
	photo tray	4
	back	4
	control panel	5
	indicator lights	5
	memory card slots	6
	menu structure	6
	print cartridge information	7
	supported print cartridges	7
	install or replace print cartridges	8
2	print from a memory card	11
	supported memory cards	11
	insert a memory card	12
	decide which photos to print	13
	print from a memory card	13
	print unmarked photos on a memory card	13
	print camera-selected photos on a memory card	14
	print new photos	14
3	installation troubleshooting	15
4	support and specifications	17
	support	17
	hp phone support	18
	specifications	19
	system requirements	19
	printer specifications	20
	hardware services	22
	software services	22
	limited warranty statement	23
	safety information	24
	environmental statements	25
	protecting the environment	25
	ozone production	25
	energy consumption	25
	paper use	25
	plastics	25
	material safety data sheets	25

recycling program	25
regulatory statements	26
copyrights and trademarks	26

Thank you for purchasing an HP Photosmart 7600 Series printer! With your new photo printer, you can print beautiful photos, save photos to your computer, and create fun and easy projects.

find more information

Your new printer comes with the following documentation to help you get started and take full advantage of your printer's capabilities:

- **Setup Guide**—The *HP Photosmart 7600 Series Setup Guide* contains quick and easy instructions to help you set up your printer and install the printer software.
- **Reference Guide**—The *HP Photosmart 7600 Series Reference Guide* is the booklet you are reading. The Reference Guide provides an overview of your printer, installation troubleshooting information, selected printer specifications, warranty information, and support information.
- **HP Photosmart Printer Help**—The HP Photosmart Printer Help describes how to use the more advanced features of your new printer. The Printer Help includes information about printer care and maintenance, printing and saving photos using your computer, advanced troubleshooting, and error messages.

After you have installed the HP Photosmart printer software on your computer, you can view and print the HP Photosmart Printer Help.

Note: If you are using a Windows® PC, and you want to install the HP Photosmart Printer Help in Arabic, Croatian, Estonian, Hebrew, Latvian, Lithuanian, or Slovak, insert the CD labeled "User's Guide" that came in the box with your printer.

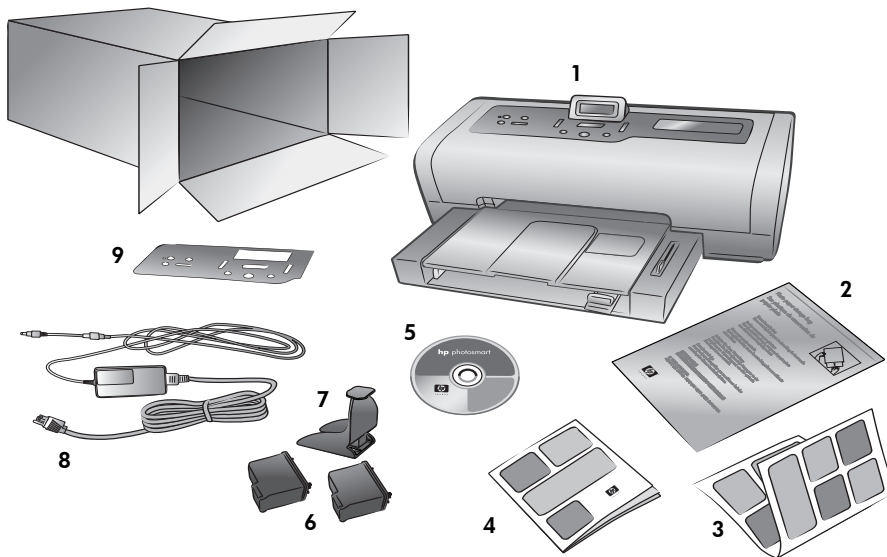
view the hp photosmart printer help

- **Windows PC:** From the **Start** menu, select **Programs** (in Windows XP, select **All Programs**); **Hewlett-Packard**; **Photosmart 140, 240, 7200, 7600, 7700, 7900 Series**; **Photo & Imaging Director**. From the **Photo & Imaging Director**, click **Help**.
- **Macintosh®:** Insert the HP Photosmart CD. In the **User Docs** folder, select your **language**, then double-click the **photosmart 7660.html** file.

print the hp photosmart printer help

- **Windows PC:** Click **Print** in the top navigation bar of the HP Photosmart Printer Help window.
- **Macintosh:** Click in the frame you want to print. From the **File** menu, select **Print**, or click **Print** in the top navigation bar of the browser.

what's in the box?



Your printer box contains the following items:

- 1 HP Photosmart 7600 Series printer
- 2 Photo paper storage bag
- 3 *HP Photosmart 7600 Series Setup Guide*
- 4 *HP Photosmart 7600 Series Reference Guide*
- 5 HP Photosmart 7600 Series printer software CD (some countries or regions may have more than one CD)
- 6 HP #57 tri-color print cartridge and HP #58 photo print cartridge
- 7 Print cartridge protector
- 8 Power supply (may vary in appearance or have an additional power cord)
- 9 Faceplate

Note: Some contents may vary by country or region.

printer overview

This chapter contains an overview of the following parts of your printer:

- **front** on page 3
- **photo tray** on page 4
- **back** on page 4
- **control panel** on page 5
- **indicator lights** on page 5
- **memory card slots** on page 6
- **menu structure** on page 6

front

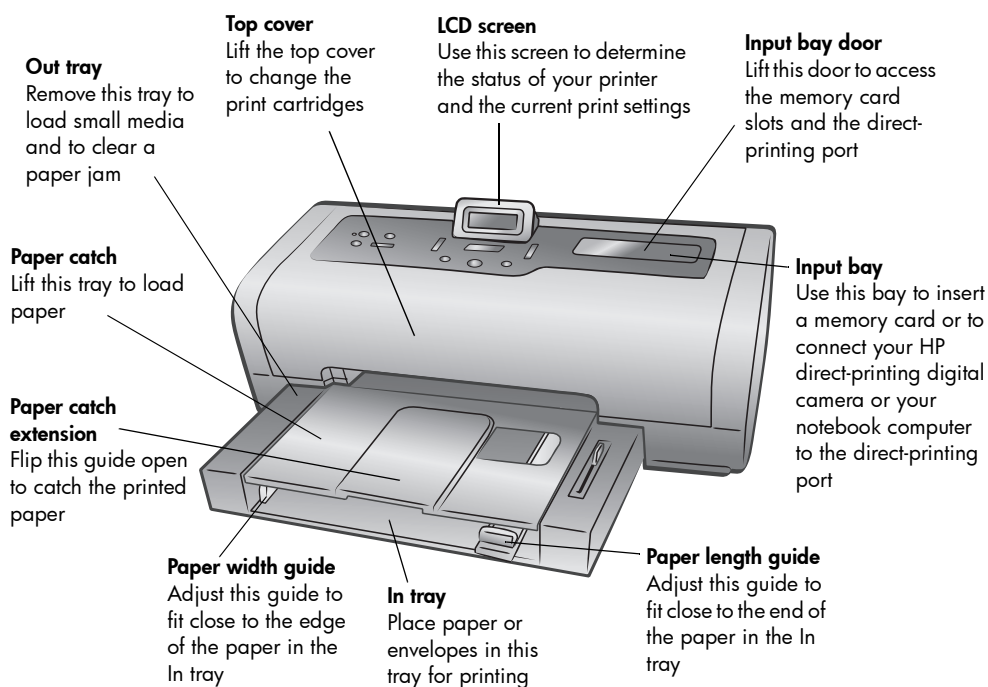
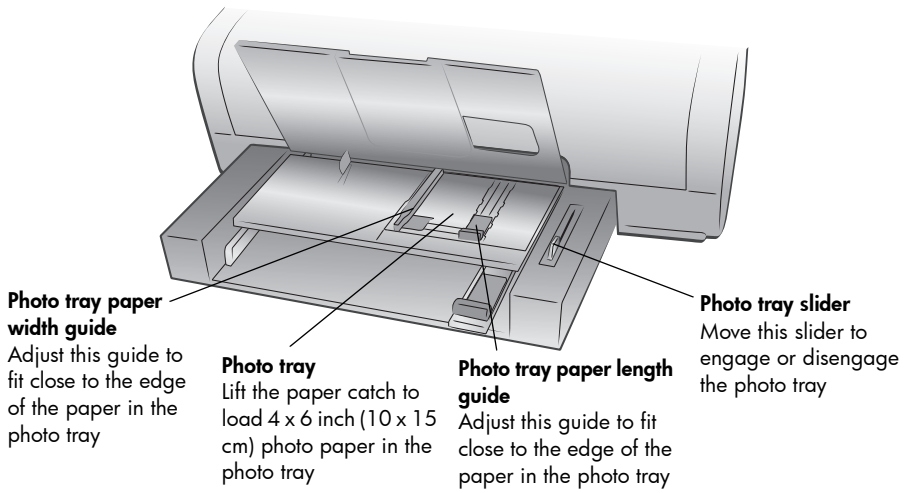
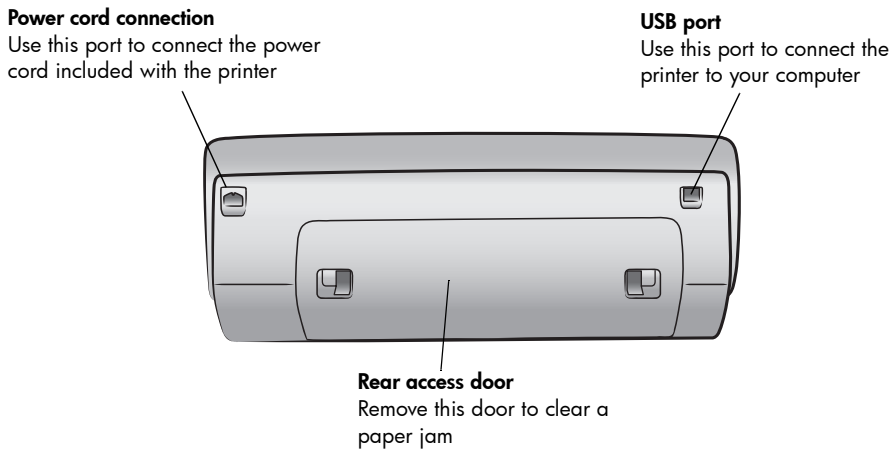


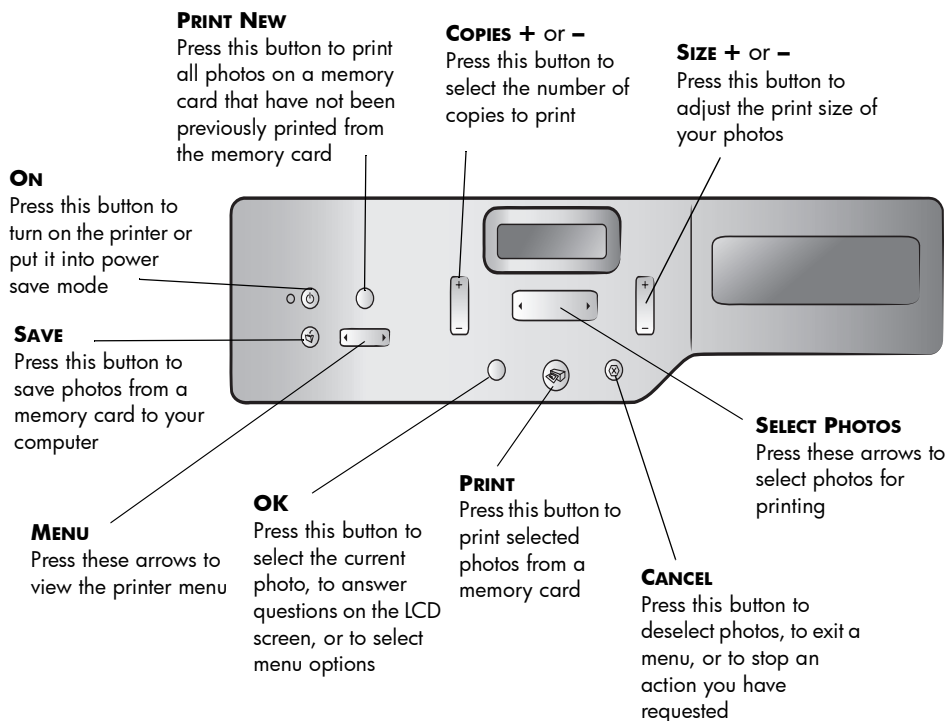
photo tray



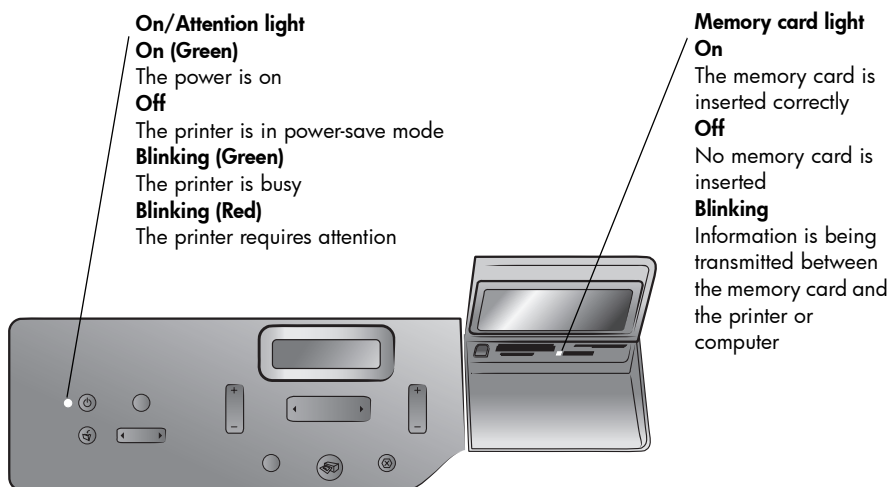
back



control panel



indicator lights



memory card slots

CompactFlash™/IBM®

Microdrive memory card slot

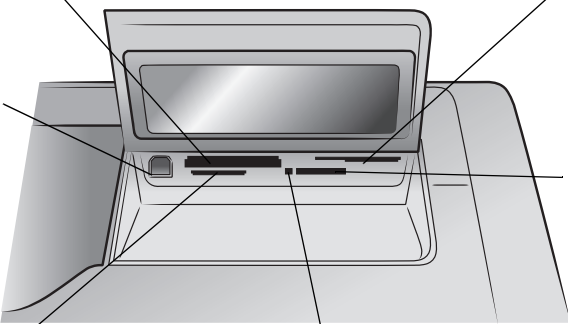
You can insert a CompactFlash or an IBM Microdrive memory card into this slot

SmartMedia™/xD-Picture Card™
memory card slot

You can insert a SmartMedia memory card into the upper portion of this slot or an xD-Picture Card memory card into the lower right portion of this slot

Direct-printing port

Use this port to connect a notebook computer or an HP direct-printing digital camera to the printer



Sony® Memory Stick
memory card slot

You can insert a supported Sony Memory Stick memory card into this slot

MultiMediaCard™/Secure
Digital™ memory card slot

You can insert a MultiMediaCard memory card or a Secure Digital memory card into this slot

Memory card light

On

The memory card is inserted correctly

Off

No memory card is inserted

Blinking

Information is being transmitted between the memory card and the printer or computer

menu structure

The following options are available from the main menu on your printer's LCD screen. Press the **MENU** button to access these options:

Menu Option	Choices
Select page layout	Photo Album Paper Saver
Select photo cropping option	Standard crop Full image (do not crop)
Adjust photo brightness	Seven levels from dark to light
Color options for next print	Color Black & white Sepia (brown) Antique
Date/Time stamp option	Date/time Date only Off
Borderless printing option	On Off

Menu Option	Choices
Exif printing	On Off
Select paper settings	Auto-detect Manually set
Change the print quality	Best Normal
Improve contrast	On Off
Print proof sheet	New photos All photos
Scan proof sheet	N/A
Print a sample page	N/A
Print a test page	N/A
Clean the print cartridges	N/A
Calibrate printer	N/A
Select language	English, Français, Deutsch, Español, Italiano, Português, Nederlands
Reset all menu settings	N/A

print cartridge information

Your printer prints in color and in black and white. HP provides a range of print cartridges so that you can choose the best print cartridges for your project.

supported print cartridges

Your printer supports the following print cartridges. Installing a print cartridge that is not supported may invalidate your printer warranty.

To print...	Use these print cartridges...
Color or black and white documents	HP #57 (C6657A) —Tri-color print cartridge and HP #56 (C6656A) —Black print cartridge
Color photos	HP #57 (C6657A) —Tri-color print cartridge and HP #58 (C6658A) —Photo print cartridge
Black and white photos	HP #57 (C6657A) —Tri-color print cartridge and HP #59 (C9359A) —Photo gray print cartridge (available Fall 2003)

When you install a print cartridge, match the number on the print cartridge to the number on the print cartridge latch. The printer holds two print cartridges at a time.

For information about printing in Ink-backup Printing Mode, see the HP Photosmart Printer Help.

Caution! Check that you are using the correct print cartridges. Also, note that HP does not recommend modifying or refilling HP print cartridges. Damage that results from modifying or refilling HP print cartridges is not covered by HP's warranty.

Note: Whenever you remove a print cartridge from the printer, store it in the print cartridge protector that came with your printer. Failure to do so can cause the print cartridge to fail. For more information about storing your print cartridges, see the HP Photosmart Printer Help.

install or replace print cartridges

To get the best performance from your printer, use only genuine HP factory-filled print cartridges.

To get maximum use from your print cartridges, turn off the printer when it is not in use. Do not unplug the printer or turn off the power source (such as a power strip) until the On/Attention light is off. Properly turning off the printer allows it to store the print cartridges properly.

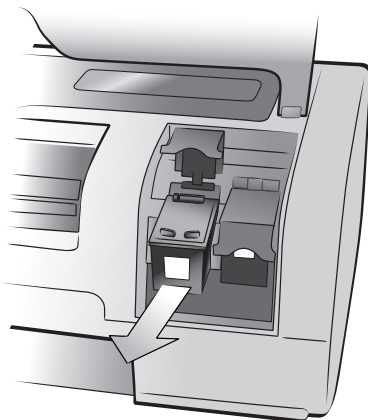
To install or replace the print cartridges:

- 1 If the printer is off, press the **ON** button on the printer's control panel.
- 2 Load plain paper in the In tray so the printer can print a calibration page after you install the print cartridges.
- 3 Lift the top cover of the printer.
- 4 Push down on the print cartridge latch and pull it forward. The print cartridge latch pops open.

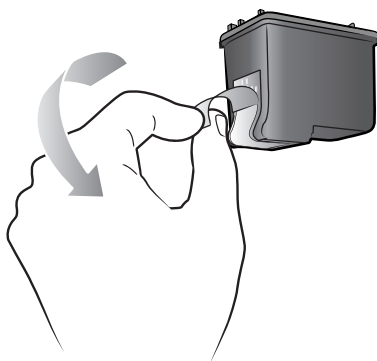


- 5 If you are replacing a print cartridge, slide out the old print cartridge and store, recycle, or discard it.

Note: For information about recycling print cartridges, go to www.hp.com/recycle.



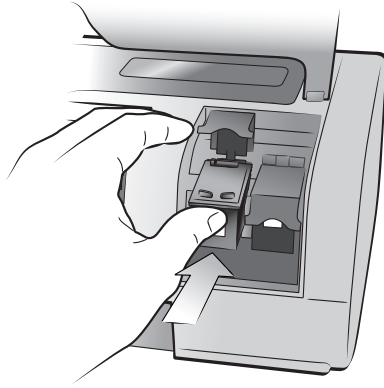
- 6 Take the new print cartridge out of its package.
- 7 Grasp the pink tab and gently peel off the clear plastic tape. Make sure you remove only the clear tape. Be sure to install the print cartridge immediately after removing the tape; ink nozzles exposed longer than one minute may dry out and cause printing problems later. Once the tape is removed, do not attempt to replace it.



Note: Do not touch the ink nozzles or the copper contacts on the print cartridge. Touching these parts may cause the print cartridge to fail.

- 8 Insert the print cartridge:
- Hold the print cartridge so the copper contacts go into the printer first. Line up the ridges on the left and right sides of the top of the print cartridge with the grooves on the inside of the print cartridge cradle.

- b. Carefully slide the print cartridge under the silver bar into the cradle, then firmly push the print cartridge in until it stops.



- c. Push down on the print cartridge latch until it locks.
- 9 Close the top cover.
 - 10 If you are prompted to print a calibration page, press the **OK** button. The printer prints a calibration page.

Your printer and print cartridges are calibrated to give you optimal printing results. You can discard the calibration page.

2

print from a memory card

It's easy to print high-quality photos for yourself, family, and friends. If your digital camera uses a memory card to store photos, you can insert the memory card into the printer to print your photos. Messages on the printer's LCD screen guide you through the process—you don't have to turn on your computer or even have your printer connected to a computer!

Note: You can also print photos using your computer. For more information, see the HP Photosmart Printer Help. For information about viewing the Printer Help, see **view the hp photosmart printer help** on page 1.

supported memory cards

Your HP Photosmart printer can read the following memory cards:

CompactFlash Association (CFA) certified Type I and II, IBM Microdrive, MultiMediaCard, Secure Digital, SmartMedia, Sony Memory Sticks, and xD-Picture Card.

These cards are manufactured by several vendors and are available in a variety of storage capacities. You can purchase memory cards where you purchased your digital camera or at most computer supply stores.

Caution! Using any other type of memory card may damage the memory card and the printer.



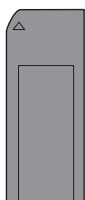
IBM Microdrive



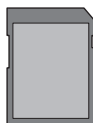
CompactFlash
Type I and II



SmartMedia



Sony Memory Sticks



Secure Digital



MultiMediaCard



xD-Picture Card

insert a memory card

After you have taken pictures with your digital camera, remove the memory card from your camera and insert it into your printer. You can print photos immediately or save the photos to your computer.

When the memory card is inserted correctly, the memory card light blinks and then remains solid.

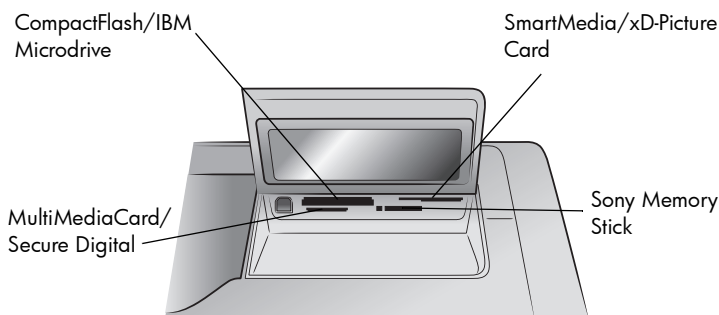
Caution! Do not pull out the memory card while the memory card light is blinking. Removing a memory card while it is being accessed may damage the printer or the memory card, or corrupt the information on the memory card.

To insert a memory card:

- 1 Lift the input bay door.
- 2 Remove any memory cards that may already be inserted into any of the memory card slots.

For information about removing memory cards, see the HP Photosmart Printer Help. For information about viewing the Printer Help, see **view the hp photosmart printer help** on page 1.

- 3 Find the correct slot for your memory card.



Note: To use a Sony Memory Stick Duo™ memory card, insert the memory card into the adapter that came with the Memory Stick Duo before you insert it into the printer's memory card slot.

- 4 Insert the memory card into the appropriate memory card slot. The end with the metal contacts or pinholes must go into the printer first.

Caution! Inserting the memory card any other way may damage the memory card or the printer.

- 5 Gently push the memory card into the printer until it stops. The memory card may not insert all the way into the printer.

Caution! Forcing the memory card into the printer too far may damage the memory card or the printer.

Note: If you insert a SmartMedia memory card upside down, the red On/Attention light blinks. Remove the memory card and reinsert it properly.

If you have camera-selected photos stored on the memory card, a message appears on the printer's LCD screen asking if you want to print the camera-selected photos. For more information, see **print camera-selected photos on a memory card** on page 14.

decide which photos to print

You can decide which photos to print by printing a photo index page or a proof sheet.

- A photo index page shows thumbnail views and index numbers of the photos on the memory card.
- A proof sheet, which may be several pages long, shows thumbnail views of all the photos stored on the memory card, and allows you to select photos to print, specify the number of copies to print, and select a layout.

For information about printing an index page or a proof sheet, see the HP Photosmart Printer Help. For information about viewing the Printer Help, see **view the hp photosmart printer help** on page 1.

print from a memory card

Your printer can print digital photos that are stored on your memory card. Digital photos may be unmarked or camera-selected. For a list of supported digital photo file types, see **printer specifications** on page 20.

print unmarked photos on a memory card

Unmarked digital photos are standard digital photos that you stored on the memory card but have not marked for printing.

Note: Not all digital cameras allow you to mark your photos for printing.

To print unmarked photos on a memory card:

- 1 Insert the memory card into the printer's memory card slot.
- 2 Press the **SELECT PHOTOS** ◀ or ▶ button to navigate through the photos on the memory card.
- 3 Press the **OK** button when the number of the photo you want to print appears on the printer's LCD screen.
- 4 (Optional) Repeat steps 2 and 3 to select additional photos for printing.
- 5 Press the **OK** button again. A message appears on the printer's LCD screen indicating the number of photos selected.

Note: At this point, you can print multiple copies of the selected photos. You can also change the default size of the selected photos. For more information, see the HP Photosmart Printer Help. For information about viewing the Printer Help, see **view the hp photosmart printer help** on page 1.

- 6 Press the **PRINT** button to start printing.

print camera-selected photos on a memory card

Camera-selected photos are photos you marked for printing using your digital camera. When you select photos using your camera, the camera creates a Digital Print Order Format (DPOF) file that identifies which photos have been selected for printing.

Your printer can read the DPOF file from the memory card so you do not have to reselect the photos to print. Review the documentation that came with your digital camera to see if it supports camera-selected photos. Your printer supports DPOF file format 1.1.

Note: Not all digital cameras allow you to mark your photos for printing.

To print camera-selected photos on a memory card:

- 1 Use your digital camera to select the photos you want to print. For more information, see the documentation that came with your camera.
- 2 Insert the memory card into the printer's memory card slot.
The printer automatically recognizes the camera-selected photos on the memory card and asks if you want to print them.
- 3 Press the **OK** button.

print new photos

You can print all the photos on the memory card that were not previously printed from the printer's control panel.

To print all new photos on a memory card:

- 1 Insert a memory card into the printer.
- 2 Press the **COPIES +** or **-** button until the number of copies you want to print appears on the printer's LCD screen.
- 3 Press the **SIZE +** or **-** button until the size you want to print appears.
- 4 Press the **PRINT NEW** button to print all the photos on the memory card that were not previously printed from the printer's control panel.

3

installation troubleshooting

Your HP Photosmart printer is designed to be reliable and easy to use. This chapter contains solutions to Windows PC printer software installation problems. For detailed troubleshooting information about all aspects of your printer, including Macintosh installation and error messages, see the HP Photosmart Printer Help. For information about viewing the Printer Help, see **view the hp photosmart printer help** on page 1.

Before contacting HP support, read this section for troubleshooting tips or go to the online support services at **www.hp.com/support**.

Note: In the presence of high electromagnetic fields, printed documents and photos may be slightly distorted. HP recommends using a USB cable of less than 10 feet (3 meters) in length to minimize injected noise due to potential high electromagnetic fields.

Problem	Possible cause	Solution
When I connected the printer to my computer, the Found New Hardware Wizard opened but did not recognize the printer.	You connected the printer to your computer before inserting the HP Photosmart CD.	<ol style="list-style-type: none"> 1 Disconnect the USB cable from the printer and close the Found New Hardware Wizard. 2 Insert the HP Photosmart CD that came with your printer. When the Install Wizard appears, click Cancel. 3 From the Start menu, click Run. 4 Click Browse and navigate to your CD drive. 5 Select the Uninstaller.bat file and click Open. 6 Click OK to launch the Uninstaller. 7 Click Continue to uninstall the files created when you connected the printer to your computer. 8 Click Restart. When the computer restarts, remove the HP Photosmart CD and follow the setup instructions in the <i>HP Photosmart Setup Guide</i> that came with your printer.
During installation, the system requirements dialog box appears, indicating that my computer monitor's display resolution does not meet the minimum system requirements.	Your monitor's display resolution is set below minimum system requirements. For more information, see system requirements on page 19.	<ol style="list-style-type: none"> 1 Click Cancel in the system requirements dialog box. 2 Right-click on the Desktop and select Properties. 3 Click the Settings tab. 4 Move the slider to the right until the resolution is 800 x 600 or higher. 5 Click Apply. A Monitor Settings message appears. 6 Click Yes to accept the changes. 7 Reinstall the printer software.

Problem	Possible cause	Solution
<p>The software did not install correctly on my computer. OR I need to reinstall the printer software.</p>	<p>There may be a conflict with your virus protection program. OR There may be a conflict with another software program.</p>	<ol style="list-style-type: none"> 1 Uninstall the printer software. To do this, insert the HP Photosmart CD into your computer, click Uninstall, then follow the instructions on your computer screen. 2 When the uninstall is complete, restart your computer. 3 Pause or disable any active virus protection programs. 4 Reinstall the printer software.
<p>Windows 98 only When I connect a USB cable between the printer and my computer, the Add New Hardware Wizard appears once, but the printer driver does not install completely. The Add New Hardware Wizard does not appear again.</p>	<p>Installation was cancelled, was not completed, or there was an error.</p>	<ol style="list-style-type: none"> 1 Turn off the printer and disconnect the USB cable from the printer. 2 Unplug the power cord from the printer. 3 Wait about 10 seconds. 4 Plug the power cord into the printer and turn on the printer. 5 Uninstall the printer software. To do this, insert the HP Photosmart CD into your computer, then follow the instructions on your computer screen. 6 When the uninstall is complete, restart your computer. 7 Reinstall the printer software.
<p>Windows 98 only When I connect a USB cable between the printer and my computer, the Add New Hardware Wizard does not appear.</p>	<p>Your USB cable may not be working or may not be connected properly.</p>	<ol style="list-style-type: none"> 1 Turn off the printer and disconnect the USB cable from the printer. 2 Unplug the power cord from the printer. 3 Wait about 10 seconds. 4 Plug the power cord into the printer and turn on the printer. 5 Reconnect the USB cable to the printer. <p>If you are still having problems, try using another USB cable.</p> <p>OR</p> <ol style="list-style-type: none"> 1 Click Start, Settings, Control Panel. 2 Double-click the System icon. 3 Click the Device Manager tab. 4 Click the (+) icon next to the Universal Serial Bus controllers option. If you see a USB host controller and a USB root hub listed, USB is probably enabled. If you do not see these devices listed, refer to your computer's documentation or contact the computer manufacturer for more information about enabling and setting up USB.

4

support and specifications

This chapter contains the following information about your printer:

- **support** on page 17
- **specifications** on page 19
- **hardware services** on page 22
- **software services** on page 22
- **limited warranty statement** on page 23
- **safety information** on page 24
- **environmental statements** on page 25
- **regulatory statements** on page 26
- **copyrights and trademarks** on page 26

support

If you have a problem, follow these steps:

- 1 Go to the HP Photosmart Printer Help for detailed information about how to use your printer and troubleshoot problems. For information about viewing the HP Photosmart Printer Help, see **view the hp photosmart printer help** on page 1.
- 2 If you are unable to solve the problem using the information in the HP Photosmart Printer Help, Web and E-mail support are available in the following languages: Dutch, English, French, German, Italian, Portuguese, Spanish, and Swedish.
 - Go to **www.hp.com/support** to access online support pages or send HP an E-mail message for one-on-one answers to your questions.
 - Go to **www.hp.com** to check for software updates.
- 3 If you are unable to solve the problem using the HP Photosmart Printer Help or HP Web sites, call HP support using the number for your country or region. For a list of country and region phone numbers, see the next section.

hp phone support

Your printer comes with a limited time of free phone support. To check the duration of your free support, see the **limited warranty statement** on page 23 or go to www.hp.com/support.

After the free phone support period, help is available from HP at an additional cost. Contact your HP dealer or call the support phone number for your country or region for support options.

To receive HP support by phone, call the appropriate support phone number for your location. Standard phone company charges apply.

Note: Customers in Western Europe should go to www.hp.com/support to access phone support numbers in their country or region.

Country	Phone number
Algeria	(+212) 22404747
Bahrain	800 728
Czech Republic	42 (0)2 6130 7310
Egypt	02 532 5222
Greece	+ 30 1 60 73 603
Hungary	+ 36 (0)1 382 1111
Israel	972 (0) 9 830 4848
Morocco	(+212) 22404747
Poland	+ 48 22 865 98 00
Romania	01 315 44 42
Russia, Moscow	7 095 923 50 01
Russia, St. Petersburg	7 812 346 7997
Saudi Arabia	800 897 14440
Slovakia	+ 421-2-68208080
South Africa	086 000 1030 inside RSA + 27-11 258 9301 outside RSA
Tunisia	+ 216 1 891 222
Turkey	1 216 579 71 71
Ukraine	+ 7 (380-44) 490-3520
United Arab Emirates	971 4 883 8454

place a call

Call HP support while you are near the computer and printer. Be prepared to provide the following information:

- Printer model number (located on the front of the printer).
- Printer serial number (located on the bottom of the printer).
- Computer operating system.
- Version of printer driver.
 - **Windows PC:** To see the printer driver version, right-click the memory card icon in the Windows taskbar and select **About**.
 - **Macintosh:** To see the printer driver version, use the Print dialog box.
- Messages displayed on the printer's LCD screen or on the computer's monitor.
- Answers to the following questions:
 - Has the situation you are calling about happened before? Can you recreate the situation?
 - Did you install any new hardware or software on your computer around the time that the situation occurred?

specifications

This section lists minimum system requirements needed to install your HP Photosmart printer on a computer, and provides selected printer specifications.

For a complete list of printer specifications, see the HP Photosmart Printer Help. For information about viewing the Printer Help, see **find more information** on page 1.

system requirements

Component	Windows PC minimum	Macintosh minimum
Operating system	Windows 98, 2000 Professional, ME, XP Home, and XP Professional	Mac [®] OS 9 v9.1 or later, OS X v10.1 through v10.2
Processor	Pentium [®] II (or equivalent) or higher	G3 or greater
RAM	64 MB (128 MB recommended)	Mac OS 9.1 and OS 9.2: 64 MB (128 MB recommended) Mac OS X v10.1 and OS X v10.2: 128 MB
Free disk space	500 MB	500 MB
Video display	800 x 600, 16-bit or higher	800 x 600, 16-bit or higher
CD-ROM drive	4x	4x
Connectivity	USB: Front and back ports (Windows 98, 2000 Professional, ME, XP Home, and XP Professional)	USB 2.0 Full speed (Mac OS 9 v9.1 or later, OS X v10.1 through v10.2)

Component	Windows PC minimum	Macintosh minimum
Browser	Microsoft® Internet Explorer 5.5 or higher	Not required for installation

printer specifications

Connectivity, maximum	HP JetDirect External Print Servers: 175x, 310x, 380x
Connectivity, standard	USB: Front and back ports Windows 98, 2000 Professional, ME, XP Home, and XP Professional Mac OS 9 v9.1 or later, OS X v10.1 through v10.2
Dimensions	17.8 x 14.7 x 6.9 inches (452.2 x 374.4 x 175.5 mm)
Image file formats	JPEG Baseline TIFF 24-bit RGB uncompressed interleaved TIFF 24-bit YCbCr uncompressed interleaved TIFF 24-bit RGB packbits interleaved TIFF 8-bit gray uncompressed/packbits TIFF 8-bit palette color uncompressed/packbits TIFF 1-bit uncompressed/packbits/1D Huffman
In tray capacity	25 sheets of photo paper 100 sheets of plain paper 20–40 cards (depending on thickness) 15 envelopes 20 sheets of banner paper 20 sheets of labels 25 transparencies 25 sheets of iron-on transfers
Media sizes	Photo paper (4 x 6 inches, 10 x 15 cm) Photo paper with tab (4 x 6 inches with 0.5 inch tab, 10 x 15 cm with 1.25 cm tab) Index cards (4 x 6 inches, 10 x 15 cm) Hagaki cards (3.94 x 5.83 inches, 100 x 148 mm) A6 cards (4.13 x 5.85 inches, 105 x 148.5 mm) L-size cards (3.5 x 5 inches, 90 x 127 mm) L-size cards with tab (3.5 x 5 inches with 0.5 inch tab, 90 x 127 mm with 12.5 mm tab) Banner paper (8.5 x 234 inch, 216 x 5969 mm)
Media specifications, maximum	Recommended maximum length: 14 inches (356 mm) Recommended maximum thickness: 11.5 mil (292 µm) per sheet

Media sizes, standard	Photo paper
	3 x 3 inches to 8.5 x 14 inches (76 x 76 mm to 216 x 356 mm)
	Plain paper
	Letter, 8.5 x 11 inches (216 x 280 mm)
	Legal, 8.5 x 14 inches (216 x 356 mm)
	Executive, 7.5 x 10 inches (190 x 254 mm)
	A4, 8.27 x 11.7 inches (210 x 297 mm)
	A5, 5.8 x 8.3 inches (148 x 210 mm)
	B5, 6.9 x 9.8 inches (176 x 250 mm)
	Cards
	Hagaki, 3.94 x 5.83 inches (100 x 148 mm)
	L-size, 3.5 x 5 inches (90 x 127mm)
	L-size with tab, 3.5 x 5 with 0.5 inch tab (90 x 127 mm with 12.5 mm tab)
	Index, 3 x 5 inches, 4 x 6 inches, and 5 x 8 inches (76 x 127 mm, 10 x 15 cm, and 127 x 203 mm)
	A6, 4.13 x 5.85 inches (105 x 148.5 mm)
	Envelopes
	No. 9, 3.875 x 8.875 inches (98.4 x 225.4 mm)
	No. 10, 4.125 x 9.5 inches (105 x 240 mm)
	A2 Invitation, 4.375 x 5.75 inches (110 x 146 mm)
	DL, 4.33 x 8.66 inches (110 x 220 mm)
	C6, 4.5 x 6.4 inches (114 x 162 mm)
	Custom
	3 x 5 inches to 8.5 x 14 inches (76 x 127 mm to 216 x 356 mm)
	Transparencies
	Letter, 8.5 x 11 inches (216 x 280 mm)
	A4, 8.27 x 11.7 inches (210 x 297 mm)
	Label sheets
	Letter, 8.5 x 11 inches (216 x 280 mm)
	A4, 8.27 x 11.7 inches (210 x 297 mm)
Media types	Paper (plain, inkjet, photo, and banner)
	Envelopes
	Transparencies
	Labels
	Cards (index, greeting, Hagaki, A6, L-size)
Memory cards	Iron-on transfers
	CompactFlash Type I and II
	IBM Microdrive
	MultiMediaCard
	Secure Digital
Memory card-supported file formats	SmartMedia
	Sony Memory Sticks
	xD-Picture Card
	Printing: See Image file formats on page 20
	Saving: All file formats

Output tray capacity	20 sheets of photo paper 50 sheets of plain paper 10 cards 10 envelopes 20 transparencies 20 sheets of banner paper 25 sheets of labels 25 sheets of iron-on transfers
Paper trays	One letter-size tray One 4 x 6 inch (10 x 15 cm) photo tray
Photo tray capacity	15 sheets of photo paper
Print cartridges	1 black HP #56 (C6656A) 1 tri-color HP #57 (C6657A) 1 color photo HP #58 (C6658A) 1 gray photo HP #59 (C9359A)
USB support	USB: Front and back ports Windows 98, 2000 Professional, ME, XP Home, and XP Professional Mac OS 9 v9.1 or later, OS X v10.1 through v10.2 HP recommends that the USB cable be less than 10 feet (3 meters) in length

hardware services

If you are experiencing printer hardware failure, contact the store where you purchased your printer. Or, go to www.hp.com/cpso-support/guide/psd/repairhelp.html for the nearest sales and service office. Service is free of charge during the limited warranty period. Beyond the warranty period, a service fee will be charged. For more information about the HP limited warranty, see **limited warranty statement** on page 23.

software services

HP periodically provides updates to the printer software. You can download these updates by going to www.hp.com/support or by using the software that came with your printer. Updates of the HP Photo & Imaging software are available on CD only.

To receive printer software updates using the software that came with your printer, follow these steps:

- **Windows PC:** From the **Start** menu, select **Programs** (in Windows XP, select **All Programs**); **Hewlett-Packard**; then **HP Software Update**.
- **Macintosh:** From the HP Inkjet Utility, select **Support** from the pop-up menu, then click **Support**.

limited warranty statement

Region	Europe, Middle East, Africa
Software warranty	90 days
Printer warranty	1 year

A. Extent of Limited Warranty

- 1 Hewlett-Packard (HP) warrants to the end-user customer that the HP products specified above will be free from defects in material and workmanship for the duration specified above, which duration begins on the date of purchase by the customer.
- 2 For software products, HP's limited warranty applies only to a failure to execute programming instructions. HP does not warrant that the operation of any product will be uninterrupted or error free.
- 3 HP's limited warranty covers only those defects which arise as a result of normal use of the product, and does not cover any other problems, including those which arise as a result of:
 - Improper maintenance or modification;
 - Software, media, parts, or supplies not provided or supported by HP; or
 - Operation outside the product's specifications.
- 4 For HP printer products, the use of a non-HP ink cartridge or a refilled ink cartridge does not affect either the warranty to the customer or any HP support contract with the customer. However, if printer failure or damage is attributable to the use of a non-HP or refilled ink cartridge, HP will charge its standard time and materials charges to service the printer for the particular failure or damage.
- 5 If HP receives, during the applicable warranty period, notice of a defect in any product which is covered by HP's warranty, HP shall either repair or replace the defective product, at HP's option.
- 6 If HP is unable to repair or replace, as applicable, a defective product which is covered by HP's warranty, HP shall, within a reasonable time after being notified of the defect, refund the purchase price for the product.
- 7 HP shall have no obligation to repair, replace, or refund until the customer returns the defective product to HP.
- 8 Any replacement product may be either new or like-new, provided that it has functionality at least equal to that of the product being replaced.
- 9 HP products may contain remanufactured parts, components, or materials equivalent to new in performance.
- 10 HP's limited warranty is valid in any country or region where the covered HP product is distributed by HP. Contracts for additional warranty services, such as on-site service, are available from any authorized HP service facility in countries or regions where the product is distributed by HP or by an authorized importer. For phone support in Europe please check for the details and conditions of phone support in your country or region by consulting the following Web site: www.hp.com/support. Alternatively, you can ask your dealer or call HP at the phone number indicated in this booklet. As part of our constant efforts to improve our phone support service, we advise you to check our Web site on a regular basis for new information regarding service features and delivery.

B. Limitations of Warranty

TO THE EXTENT ALLOWED BY LOCAL LAW, NEITHER HP NOR ITS THIRD PARTY SUPPLIERS MAKE ANY OTHER WARRANTY OR CONDITION OF ANY KIND, WHETHER EXPRESS OR IMPLIED, WITH RESPECT TO THE HP PRODUCTS, AND SPECIFICALLY DISCLAIM THE IMPLIED WARRANTIES OR CONDITIONS OF MERCHANTABILITY, SATISFACTORY QUALITY, AND FITNESS FOR A PARTICULAR PURPOSE.

C. Limitations of Liability

- 1 To the extent allowed by local law, the remedies provided in this Warranty Statement are the customer's sole and exclusive remedies.
- 2 TO THE EXTENT ALLOWED BY LOCAL LAW, EXCEPT FOR THE OBLIGATIONS SPECIFICALLY SET FORTH IN THIS WARRANTY STATEMENT, IN NO EVENT SHALL HP OR ITS THIRD PARTY SUPPLIERS BE LIABLE FOR DIRECT, INDIRECT, SPECIAL, INCIDENTAL, OR CONSEQUENTIAL DAMAGES, WHETHER BASED ON CONTRACT, TORT, OR ANY OTHER LEGAL THEORY AND WHETHER ADVISED OF THE POSSIBILITY OF SUCH DAMAGES.

D. Local Law

- 1 This Warranty Statement gives the customer specific legal rights. The customer may also have other rights which vary from state to state in the United States, from province to province in Canada, and from country to country or region to region elsewhere in the world.
- 2 To the extent that this Warranty Statement is inconsistent with local law, this Warranty Statement shall be deemed modified to be consistent with such local law. Under such local law, certain disclaimers and limitations of this Warranty Statement may not apply to the customer. For example, some states in the United States, as well as some governments outside the United States (including provinces in Canada), may:
 - Preclude the disclaimers and limitations in this Warranty Statement from limiting the statutory rights of a consumer (e.g. the United Kingdom);
 - Otherwise restrict the ability of a manufacturer to enforce such disclaimers or limitations; or
 - Grant the customer additional warranty rights, specify the duration of implied warranties which the manufacturer cannot disclaim, or not allow limitations on the duration of implied warranties.
- 3 FOR CONSUMER TRANSACTIONS IN AUSTRALIA AND NEW ZEALAND, THE TERMS IN THIS WARRANTY STATEMENT, EXCEPT TO THE EXTENT LAWFULLY PERMITTED, DO NOT EXCLUDE, RESTRICT, OR MODIFY, AND ARE IN ADDITION TO, THE MANDATORY STATUTORY RIGHTS APPLICABLE TO THE SALE OF THE HP PRODUCTS TO SUCH CUSTOMERS.

safety information

Always follow basic safety precautions when using this product to reduce risk of injury from fire or electric shock.

Warning! To prevent fire or shock hazard, do not expose this product to rain or any type of moisture.

Warning! Potential shock hazard.

- Read and understand all instructions in the *HP Photosmart Setup Guide*.
- Use only a grounded electrical outlet when connecting the unit to a power source. If you do not know whether the outlet is grounded, check with a qualified electrician.
- Observe all warnings and instructions marked on the product.
- Unplug this product from wall outlets before cleaning.
- Do not install or use this product near water or when you are wet.
- Install the product securely on a stable surface.
- Install the product in a protected location where no one can step on or trip over the power cord, and where the power cord will not be damaged.
- If the product does not operate normally, see the troubleshooting information in the HP Photosmart Printer Help.
- There are no operator serviceable parts inside. Refer servicing to qualified service personnel.
- Use in a well-ventilated area.

environmental statements

Hewlett-Packard Company is committed to providing quality products in an environmentally sound manner.

protecting the environment

This printer has been designed with several attributes to minimize impact on our environment. For more information, go to HP's Commitment to the Environment Web site at www.hp.com/hpinfo/globalcitizenship/environment/index.html.

ozone production

This product generates no appreciable ozone gas (O₃).

energy consumption

Energy usage drops significantly while in ENERGY STAR[®] mode, which saves natural resources, and saves money without affecting the high performance of this product. This product qualifies for ENERGY STAR, which is a voluntary program established to encourage the development of energy-efficient office products.



ENERGY STAR is a U.S. registered mark of the U.S. EPA. As an ENERGY STAR partner, Hewlett-Packard Company has determined that this product meets the ENERGY STAR guidelines for energy efficiency. For more information, go to www.energystar.gov.

paper use

This product is suited for the use of recycled paper according to DIN 19309.

plastics

Plastic parts over 0.88 ounces (24 grams) are marked according to international standards that enhance the ability to identify plastics for recycling purposes at the end of the printer's life.

material safety data sheets

Material Safety Data Sheets (MSDS) can be obtained from the HP Web site at www.hp.com/go/msds. Customers without Internet access should contact HP support.

recycling program

HP offers an increasing number of product return and recycling programs in many countries and partners with some of the largest electronic recycling centers throughout the world. HP conserves resources by reselling some of its most popular products.

This HP product contains lead in the solder, which may require special handling at the end of its life.

regulatory statements

For regulatory identification purposes, your product is assigned a Regulatory Model Number. The Regulatory Model Number for your product is SDGOA-0376. This regulatory number should not be confused with the marketing name (hp photosmart 7600 series printer) or product number (Q3010A, Q3011A, Q3012A).

Australia EMC statement



This equipment complies with Australian EMC requirements.

Canada EMC statement

Le présent appareil numérique n'émet pas de bruit radioélectrique dépassant les limites applicables aux appareils numériques de la classe B prescrites dans le Règlement sur le brouillage radioélectrique édicté par le ministère des Communications du Canada.

This digital apparatus does not exceed the Class B limits for radio noise emissions from digital apparatus set out in the Radio Interface Regulations of the Canadian Department of Communications.

copyrights and trademarks

© Copyright 2003 Hewlett-Packard Company

All rights are reserved. No part of this document may be photocopied, reproduced, or translated to another language without the prior written consent of Hewlett-Packard Company.

The information contained in this document is subject to change without notice. Hewlett-Packard shall not be liable for errors contained herein or for consequential damages in connection with the furnishing, performance, or use of this material.

HP, the HP logo, and Photosmart are property of Hewlett-Packard Company.

The Secure Digital logo is a trademark of the SD Association.

Microsoft and Windows are registered trademarks of Microsoft Corporation.

CompactFlash, CF, and the CF logo are trademarks of the CompactFlash Association (CFA).

Sony Memory Stick is a registered trademark of Sony Corporation.

MultiMediaCard is a trademark of Infineon Technologies AG of Germany, and is licensed to the MMCA (MultiMediaCard Association).

SmartMedia is a trademark of Toshiba Corporation.

xD-Picture Card is a trademark of Fuji Photo Film Co., Ltd., Toshiba Corporation, and Olympus Optical Co., Ltd.

IBM is a registered trademark of International Business Machines Corporation.

Mac, the Mac logo, and Macintosh are registered trademarks of Apple Computer, Inc.

Pentium is a registered trademark of Intel Corporation.

Other brands and their products are trademarks or registered trademarks of their respective holders.

The embedded software in your printer is based in part on the work of the Independent JPEG Group.

The copyrights to certain photos within this document are retained by the original owners.



Printed on recycled paper
Printed in U.S., 5/03



ENERGY STAR® is a U.S. registered mark.
As an ENERGY STAR® partner,
Hewlett-Packard Company has determined that this
product meets the ENERGY STAR® guidelines for
energy efficiency.

www.hp.com

© 2003 Hewlett-Packard Company



v1.2.0