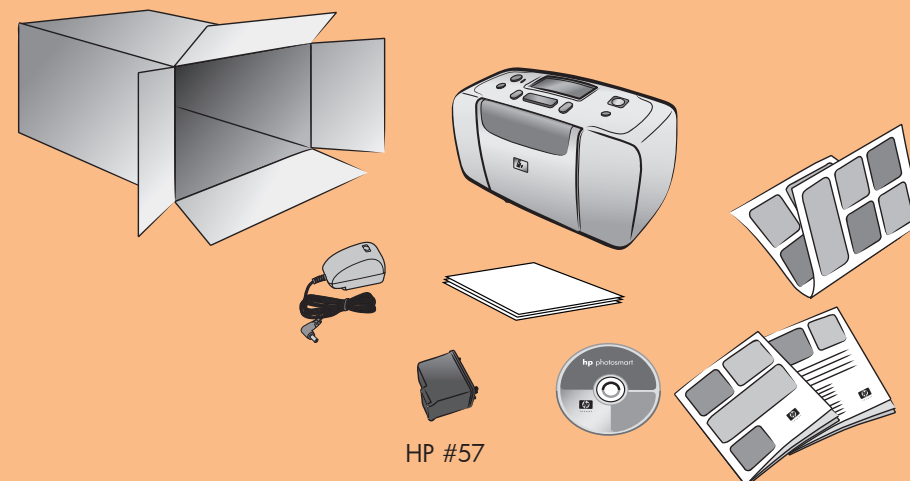


setup guide

hp photosmart 140 series



1 unpack your printer

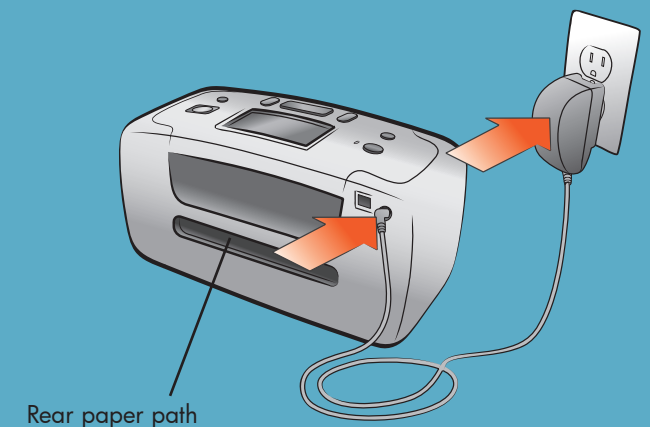


2 plug in the power cord

Place the printer at least 10 inches (250 mm) away from any obstruction to allow space for the paper to move through the printer during printing.

1. Connect the power cord to the back of your printer.
2. Plug the power cord into a working electrical outlet.

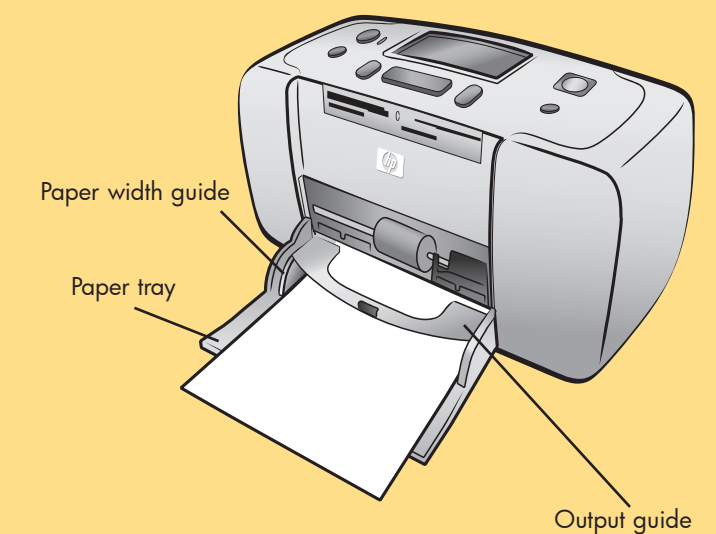
Important: Make sure the power cord does not block the rear paper path.



3 load an index card

Note: The index card will be used to print a calibration page in step 6.

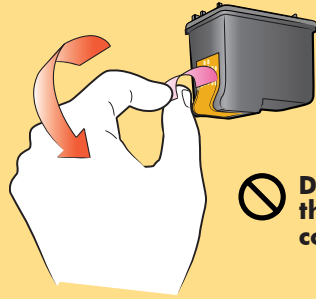
1. Open the paper tray door.
2. Place an index card from the sample pack on the paper tray and slide the card underneath the output guide.
3. Move the paper width guide to fit close to the left edge of the index card without bending the card.



Q3025-90153

4 remove the tape

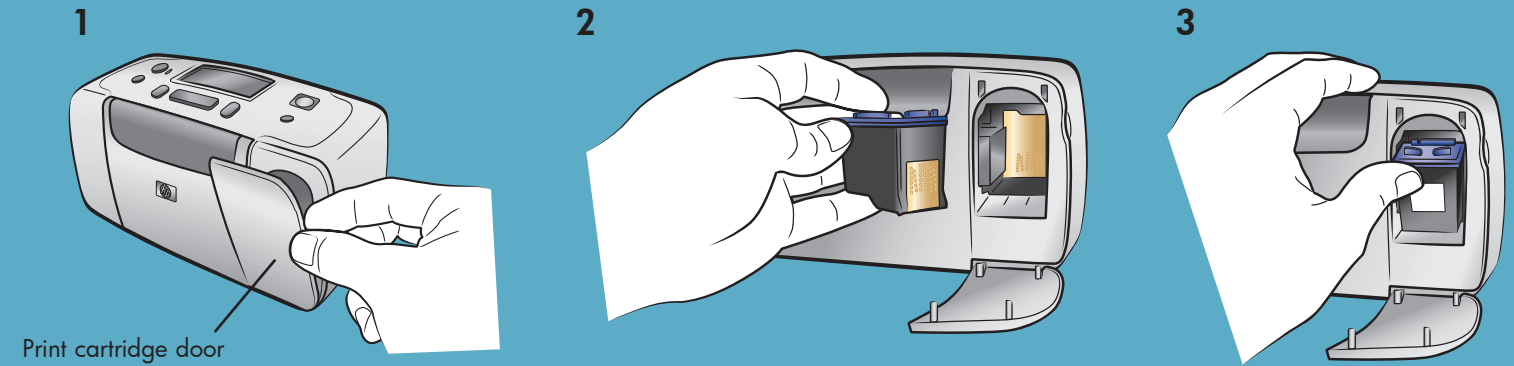
1. Open the print cartridge package.
2. Pull the **pink pull-tab** to remove the clear tape from the print cartridge.



Do not touch or remove the ink nozzles or the copper contacts!

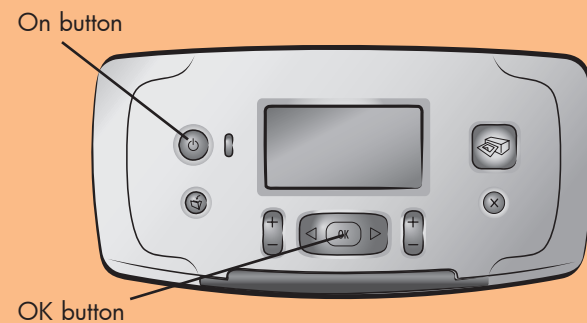
5 install the print cartridge

1. Open the print cartridge door.
2. Insert the **HP #57 tri-color** print cartridge into the print cartridge cradle with the copper contacts facing toward the inside of the printer and the ink nozzles facing down.
3. Push the print cartridge into the cradle until you feel it snap into place.
4. Close the print cartridge door.



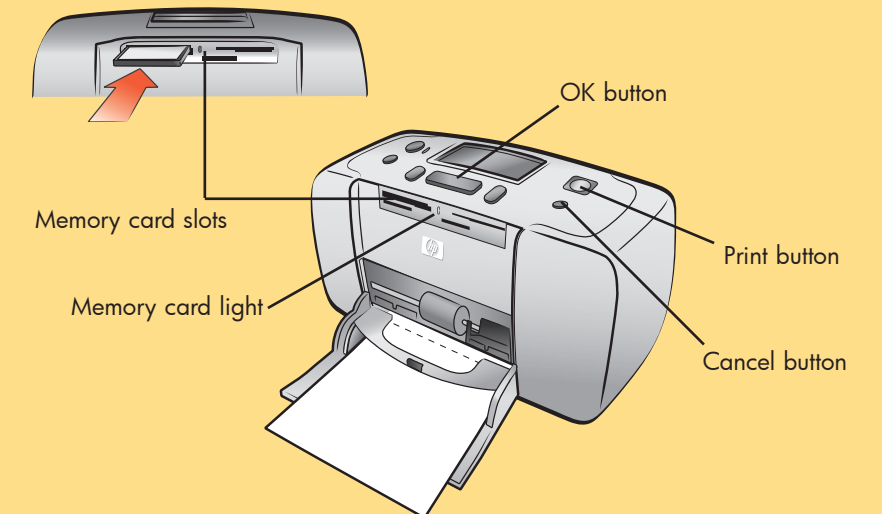
6 turn on your printer

1. Press the **ON** button on the top of the printer.
2. Press the **OK** button. A calibration page prints on the previously loaded index card.

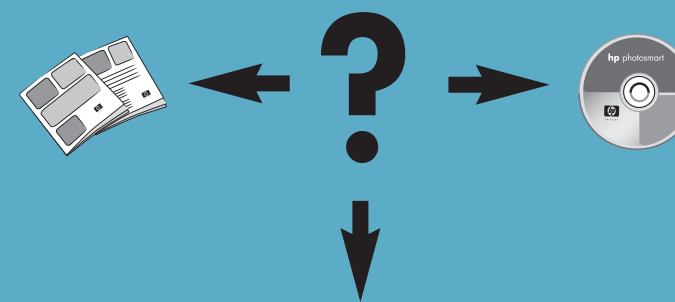


7 print your first photo

1. Place a few sheets of photo paper in the paper tray with the glossy side up and the tab closest to the inside of the printer. Slide the paper underneath the output guide.
2. Move the paper width guide to fit close to the left edge of the paper without bending the paper.
3. Insert a memory card that contains digital photos into the correct memory card slot.
Note: Push the memory card into the printer until it stops—it does not insert all the way into the printer. The memory card light flashes while the printer reads the memory card.
4. Press the **CANCEL** button to cancel printing a photo index page.
5. When **Select:#1** appears on the printer's LCD screen, press the **PRINT** button to print your first photo.



need more help?



www.hp.com/support



Printed in USA 05/03 v1.1.0 • Printed on recycled paper
© 2003 Hewlett-Packard Company