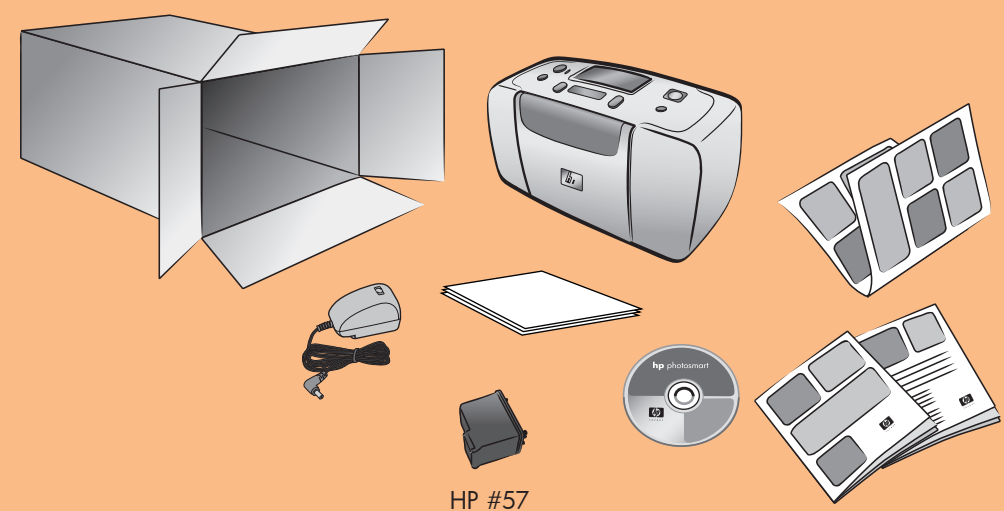


1

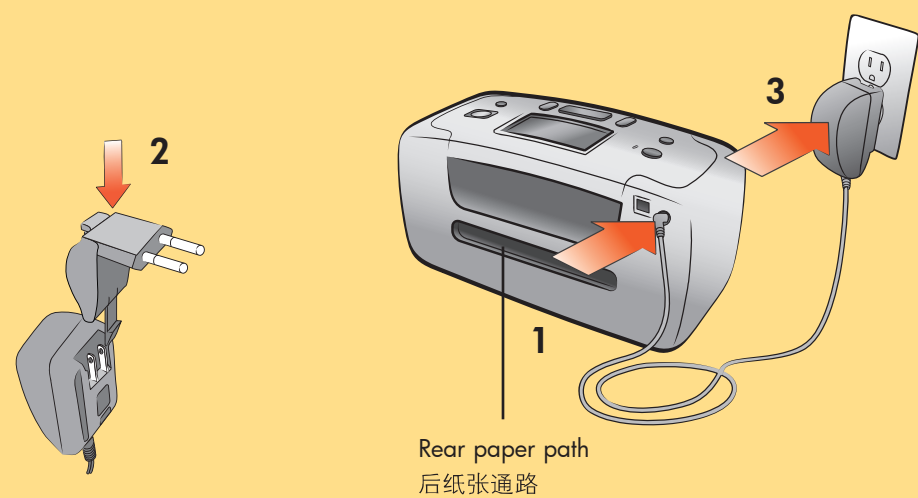


hp photosmart 140 series setup guide

hp photosmart 140 series 安装 指南



2



plug in the power cord

Place the printer at least 10 inches (254 mm) away from any obstruction to allow space for the paper to move through the printer during printing.

1. Connect the power cord to the back of your printer.
2. Connect the adapter plug for your area to the power cord.
3. Plug the power cord into a working electrical outlet.

Important: Make sure the power cord does not block the rear paper path.

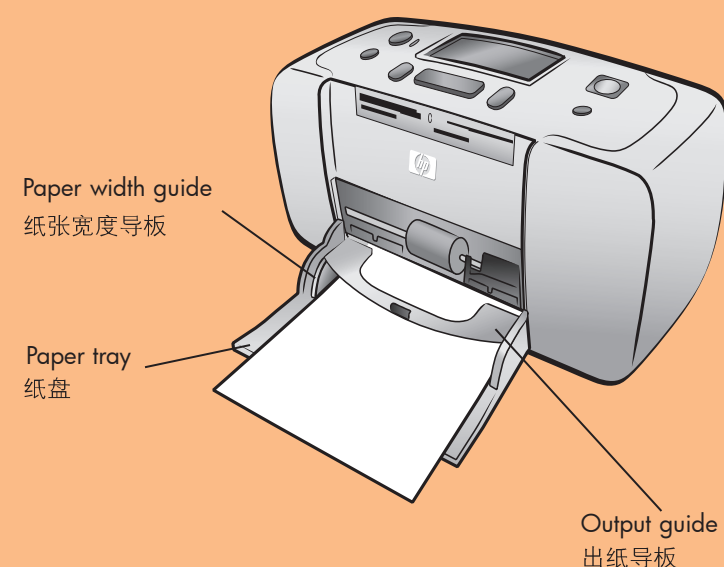
插入电源线

打印机至少与障碍物保持 10 英寸 (254 毫米) 的距离。这样，在打印时，给纸张进出打印机留出足够的空间。

1. 将电源线连接到打印机的后面。
2. 将适合您所在地区的适配器插头连接到电源线上。
3. 将电源线插入带电的插座中。

重要: 确保电源线没有阻塞后纸张通路。

3



load an index card

Note: The index card will be used to print a calibration page in step 6.

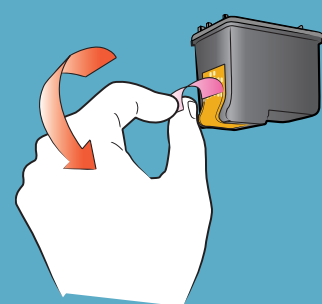
1. Open the paper tray door.
2. Place an index card from the sample pack on the paper tray and slide the card underneath the output guide.
3. Move the paper width guide to fit close to the left edge of the index card without bending the card.

装入索引卡

注意: 索引卡将用来打印步骤 6 中的校准页。

1. 打开纸盘盖。
2. 将样品包中的索引卡放在纸盘上，然后将索引卡滑入出纸导板的下面。
3. 移动纸张宽度导板，使其紧靠索引卡的左边缘，同时使卡保持平展。

4



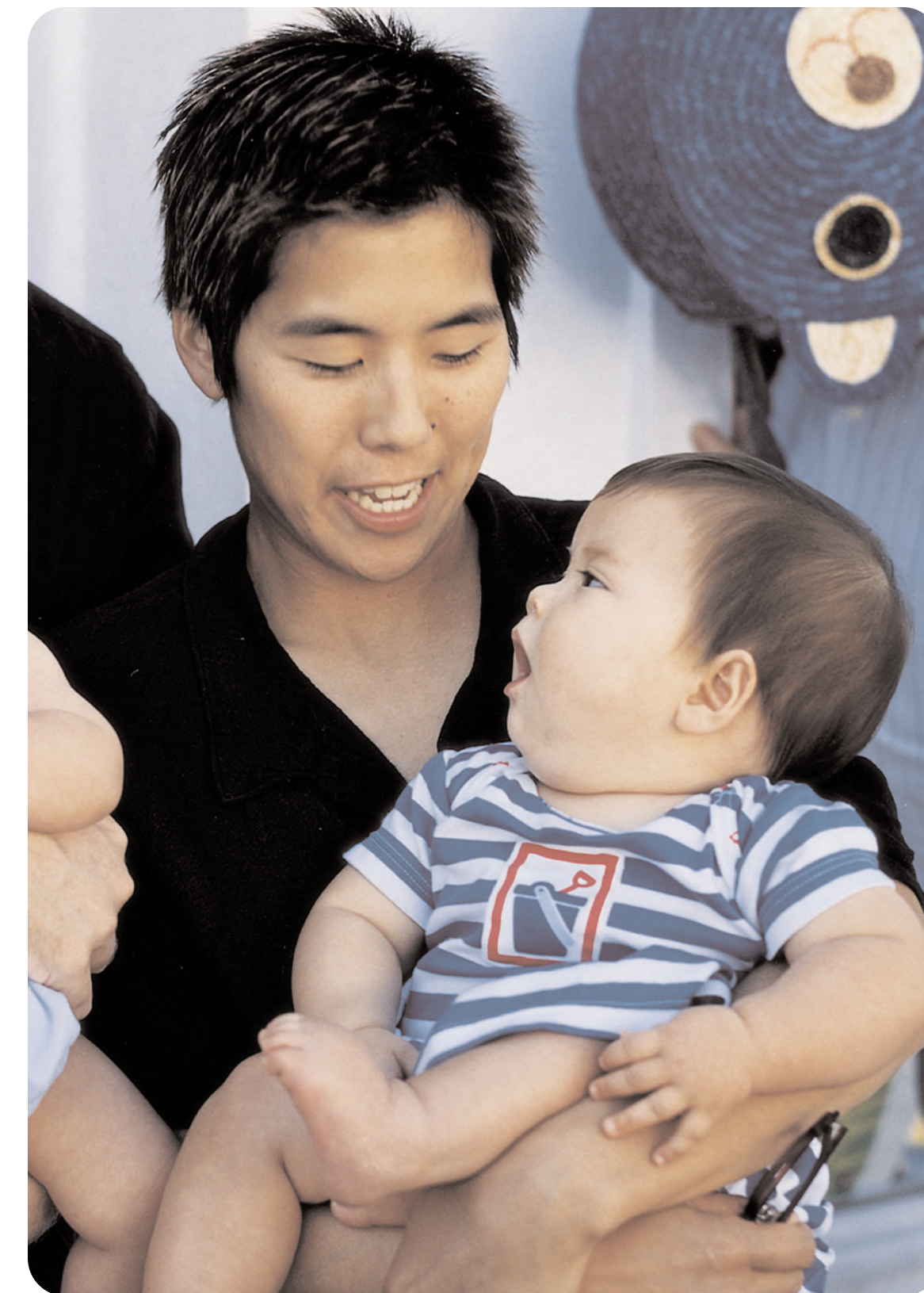
⊘ Do not touch or remove the ink nozzles or the copper contacts!
⊘ 请勿触摸或卸下油墨喷嘴或铜触点!

remove the tape

1. Open the print cartridge package.
2. Pull the pink pull-tab to remove the clear tape from the print cartridge.

撕掉胶带

1. 打开打印墨盒包装。
2. 拉起粉色标签，从打印墨盒上撕掉透明胶带。



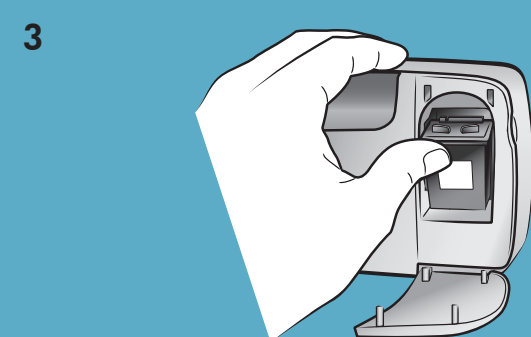
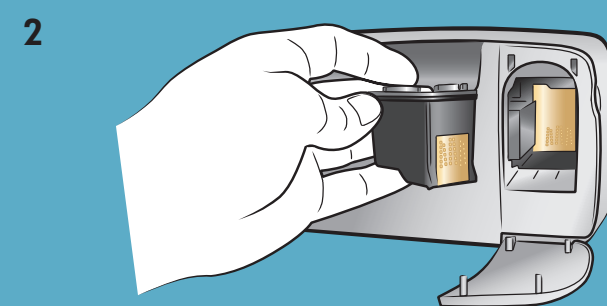
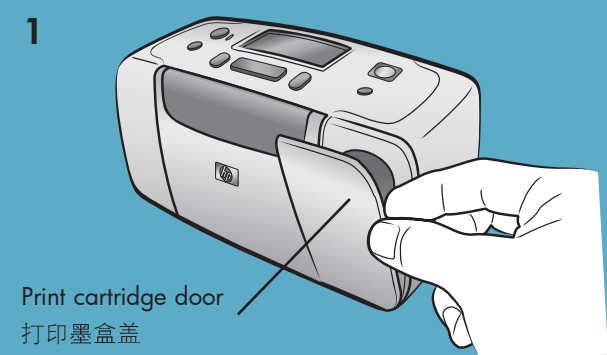
5

install the print cartridge

1. Open the print cartridge door.
2. Insert the **HP #57 tri-color** print cartridge into the print cartridge cradle with the copper contacts facing toward the inside of the printer and the ink nozzles facing down.
3. Push the print cartridge into the cradle until you feel it snap into place.
4. Close the print cartridge door.

安装打印墨盒

1. 打开打印墨盒盖。
2. 将 **HP #57 三色** 打印墨盒插入打印墨盒底座，使铜触点面朝打印机的内侧，油墨喷嘴朝下。
3. 将打印墨盒推入打印墨盒底座，直到感觉它已卡入到位。
4. 合上打印墨盒盖。



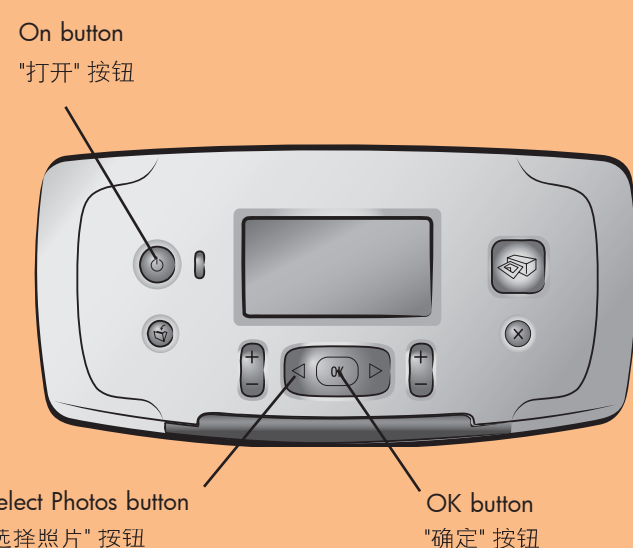
6

select your language

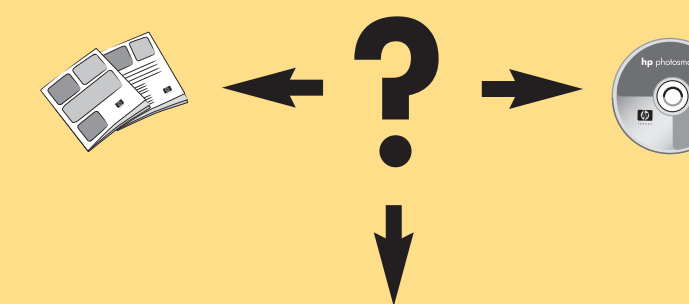
1. Press the **ON** button on the top of the printer.
2. When **Select Language?** appears on the printer's LCD screen, press the **OK** button. The first language choice appears.
3. To select this language, press the **OK** button. To see more languages, press the **SELECT PHOTOS** button. When you see your desired language, press the **OK** button. Press the **OK** button again to confirm your choice.
4. When **Select Country/Region?** appears on the printer's LCD screen, press the **OK** button. The first country/region choice appears.
5. To select this country/region, press the **OK** button. To see more choices, press the **SELECT PHOTOS** button. When you see your desired country or region, press the **OK** button.
6. Press the **OK** button again. A calibration page prints on the previously loaded index card.

选择语言

1. 按打印机上部的**打开**按钮。
2. 当打印机的 LCD 屏幕上出现 **Select Language?** (选择语言?) 时，请按**确定**按钮。出现第一个语言选项。
3. 要选择该语言，请按**确定**按钮。要查看更多语言，请按**选择照片**按钮。找到想要的语言时，按**确定**按钮。再次按**确定**按钮以确认所做的选择。
4. 当打印机的 LCD 屏幕上出现**选择国家/地区?** 时，请按**确定**按钮。出现第一个国家/地区选项。
5. 要选择该国家/地区，请按**确定**按钮。要查看更多选项，请按**选择照片**按钮。找到想要的国家或地区时，按**确定**按钮。
6. 再次按**确定**按钮。校准页打印在前面装入的索引卡上。



need more help? 需要更多帮助吗?



www.hp.com/support

7

print your first photo

1. Place a few sheets of photo paper in the paper tray with the glossy side up and the tab closest to the inside of the printer. Slide the paper underneath the output guide.
2. Move the paper width guide to fit close to the left edge of the paper without bending the paper.
3. Insert a memory card that contains digital photos into the correct memory card slot.
Note: Push the memory card into the printer until it stops—it does not insert all the way into the printer. The memory card light flashes while the printer reads the memory card.
4. Press the **CANCEL** button to cancel printing a photo index page.
5. When **Select:#1** appears on the printer's LCD screen, press the **PRINT** button to print your first photo.

打印第一张照片

1. 在纸盘中放入几张照片纸，使光面朝上、裁边朝向打印机内侧。在出纸导轨下面滑动纸张。
2. 移动纸张宽度导轨，使其紧靠纸的左边缘，同时使纸保持平展。
3. 将包含数码照片的存储卡插入正确的存储卡插槽。
注意：将存储卡推入打印机直至其停住 — 存储卡不会完全插入打印机。打印机读取存储卡时，存储卡指示灯闪烁。
4. 按**取消**按钮可取消打印照片索引页。
5. 当打印机的 LCD 屏幕上出现**选择：#1** 时，按**打印**按钮以打印第一张照片。

