



hp digital media receiver



i n v e n t

user's guide

Contents

welcome 1

getting started.....3

unpacking the box	3
installing software	4
video	5
audio	6
remote control	6
network connection	7
connecting power	8
setup wizard	8

controlling your receiver.....9

menu basics	9
remote buttons	10
onscreen keyboard	11
receiver options	11
changing the receiver name	12
controlling another receiver	12
screen saver	12
running the setup wizard	12

sharing content 13

server software	13
server menu	14
sharing content	14
synchronizing content	15
forcing resynchronization	15
music quality	16
supported music formats	16
recording digital music	17
copy protection	17
organizing music files	18
creating music playlists	18
supported photo formats	19
organizing photo albums	19
server printers	20
connection list	20
power settings	21

playing music23

music jukebox	23
supported music files	23

playing a track	23
browsing for music	24
music icon hints	25
searching for music	25
playing an artist or album	26
creating a playlist	26
playing a playlist	27
controlling music playback	28
displaying music status	28
shuffle and repeat	28
viewing track information	29
viewing photos with music	29
changing the view order	29
controlling other receivers	30

viewing photos31

photo albums	31
supported photo files	31
viewing a photo	31
photo and album icon hints	32
playing a photo slideshow	32
controlling photo playback	32
viewing photo information	33
playing music with slideshows	33
setting music for an album	33

printing photos	34
rotating photos	34
changing the view order	34
organizing your photos	34

network setup35

running the setup wizard	35
preparing for wired setup	35
wired home network	37
wired with dynamic address	37
wired with static address	38
wired with cross-over cable	39
preparing for wireless setup	40
wireless infrastructure	41
wireless ad hoc	41
wireless encryption	42
wireless signal strength	44

troubleshooting45

glossary49

warranty and license.....53

1 welcome

Thank you for purchasing an hp digital media receiver! With your new, easy-to-use media receiver you can:

- Browse and listen to your digital music on any TV and stereo in your home
- View your favorite digital pictures right on your TV and print them to any PC-connected printer
- Combine music and pictures into entertaining multimedia slideshows
- Automatically gather all digital music and pictures from multiple PCs to a central location
- Control music on multiple hp digital media receivers

setting up your receiver

This guide describes how to use your new media receiver. It includes information to help you get acquainted with your receiver, and plenty of detailed usage and troubleshooting information.

To begin setting up your hp digital media receiver, see “unpacking the box” on page 3.

finding information

Setup Sheet. Follow the instructions to quickly and easily set up your receiver.

User’s Guide. You are here! Use this guide to learn about using your receiver.

Onscreen User’s Guide. This is the electronic version of this guide. View it directly off of the CD or from the Start Menu program group after you install the receiver software on the PC.

World Wide Web. Visit Hewlett-Packard’s internet website at <http://www.hp.com> for information and support.

viewing the onscreen guide

A copy of this User's Guide is available on your computer when you install the media receiver software CD.

To view the onscreen User's Guide:

1. Click on the **Start** menu button
2. Select **All Programs**
3. Select **hp digital media**
4. Select **View User's Guide**

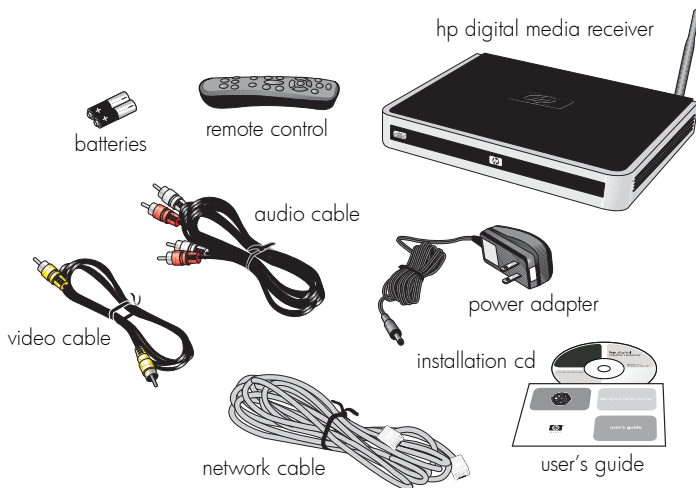
If Adobe® Acrobat® Reader® version 4.0 or later is not installed on your computer, it will be installed for you automatically when you first view the guide.

2 getting started

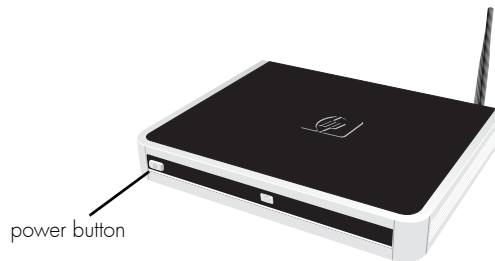
This section will help you set up your hp digital media receiver. Your connection locations and system components may vary.

unpacking the box

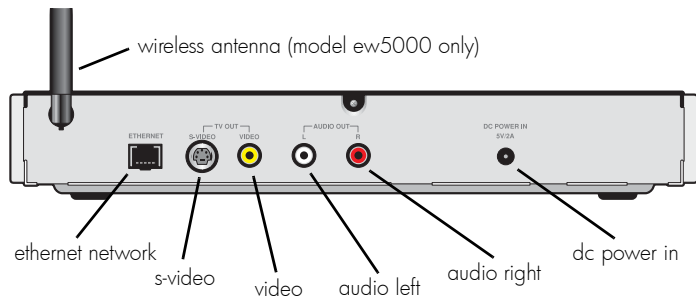
Make sure you have the following items:



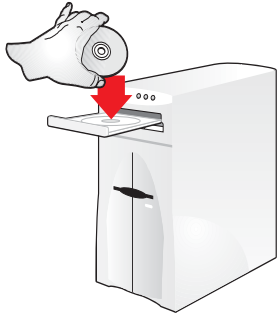
front of receiver



back of receiver



installing software



Install the hp digital media software on the PC where you store your music and digital photos.

It is best to install the software before setting up the receiver, so the receiver has content to display.

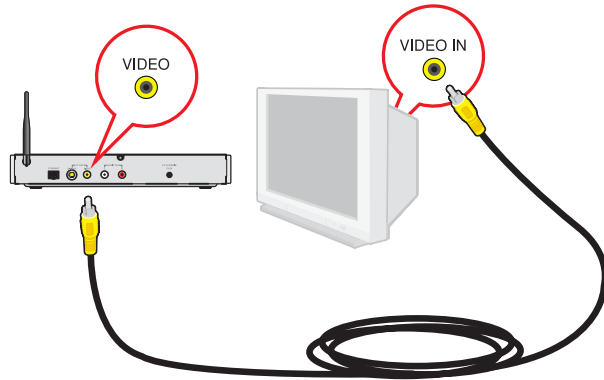
To install the software, insert the CD into the CD-ROM drive of your computer. The installation program starts automatically, and you can follow the on-screen instructions.

Note: If the software does not start automatically, you can access it from the Start menu on the Windows taskbar. On the **Start** menu, click **Run**. In the **Run** dialog box, type **x:/setup.exe**, where **x** is the drive letter of your CD-ROM drive.

The software will share the music and photos in your **My Music** and **My Pictures** folders. To change these folders or add additional shared folders, see “sharing content” on page 14.

You can install the software on multiple computers if you wish to share additional music and photos.

video



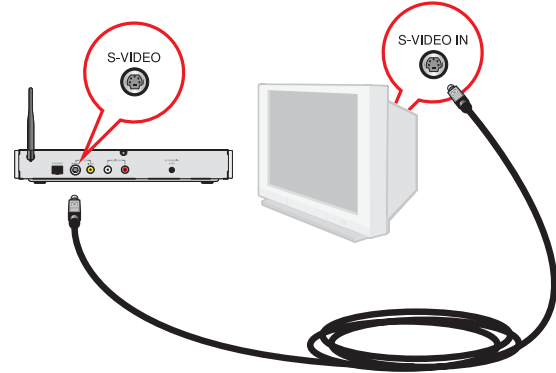
Connect the video cable from the video connector on the media receiver and attach it to the video input on your television. Some televisions have video inputs on the back of the TV and some have them on the front.

Note: If you have run out of video connections on your TV, connect the media receiver to your VCR.

For home theater systems, connect the video to your home theater receiver.

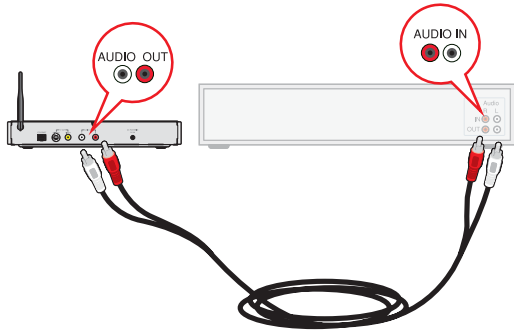
s-video

The hp digital media receiver supports s-video. If your television supports s-video, use an s-video cable (not included) for a better television picture.

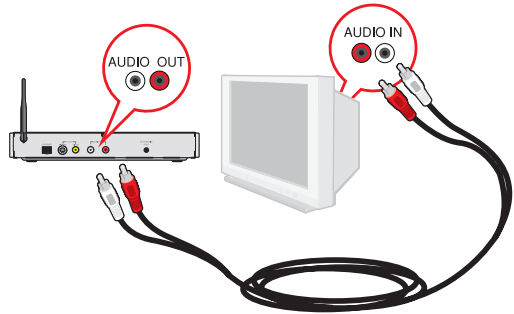


Note: You should connect either the video cable or the s-video cable...not both.

audio

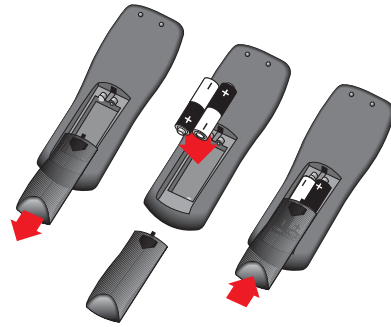


For the best music quality, connect the media receiver audio output to your home stereo system.



Alternately, connect the audio cable to your television.

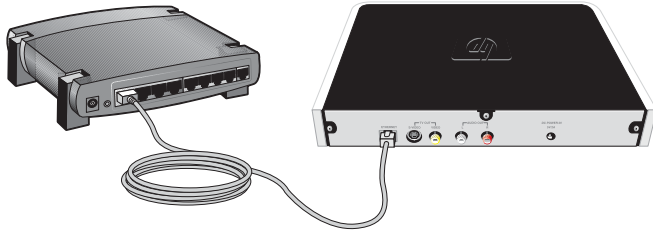
remote control



Place the included batteries in the remote control.

Match the battery direction shown above for proper operation.

network connection



In a wired home network, connect the media receiver to your home network hub or router.

If your computer is connected directly to a cable or DSL modem, and there is only one network port on the back of the modem, you do not have a home network. To set up your network, purchase a modem or router with additional network ports.

A router will allow you to share your internet connection with other PCs, and allows the media receiver access to your music and photos stored on your PC.

Note: For alternate network connections, see page 39.



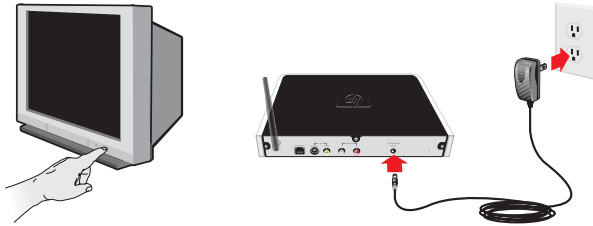
In a wireless home network, no network cable connection is required (model ew5000 only).

For the best possible reception, rotate the antenna so it extends perpendicular to the receiver, as shown above.

The hp digital media receiver can communicate with wireless access points (infrastructure mode) or directly to computers with wireless network cards (ad hoc mode).

Like all wireless devices, some experimentation may be necessary to find the best location for your media receiver. Signal strength and quality will depend on distance, walls, and building structure.

connecting power



Turn your television on. If you hooked up the audio to your stereo system, turn your stereo system on as well. Tune them both to the proper mode to match the audio and video connectors attached to the receiver.

Insert the small end of the power adapter cable into the power connection on the back of the media receiver. Make sure it is connected firmly.

Plug the power adapter into a working electrical outlet.

setup wizard

When power is applied for the first time, the setup wizard will appear.



Use the remote control to set up your hp digital media receiver. The setup wizard allows you to assign a name and quickly configure your network settings.

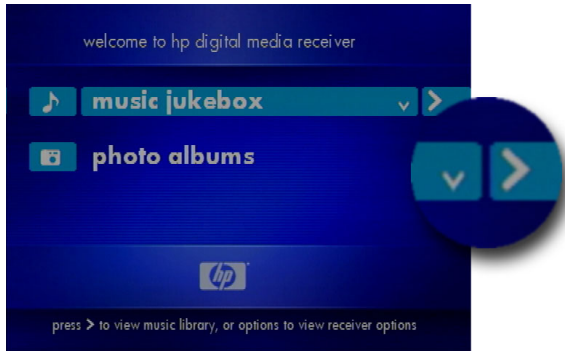
Once you have successfully completed the wizard, your media receiver will be ready to use!

Note: You can run the setup wizard again if you wish to change any of your settings. On the main screen, press the **options** button, highlight **Run Setup Wizard**, and press **select**.

3 controlling your receiver

menu basics

The hp digital media receiver uses a menu interface. As you move through the menus, you will use the **selection arrows** to move up, down, right and left. The highlight bar moves from item to item as you press the selection arrows.





The highlight bar contains arrow “hints” to help you with menu navigation. These hints show you the

possible paths you may take. For example, a down arrow hints that more items are available if you move the highlight bar down.

To move to the next menu screen, use the right arrow. Similarly, use the left arrow to move to the previous screen.

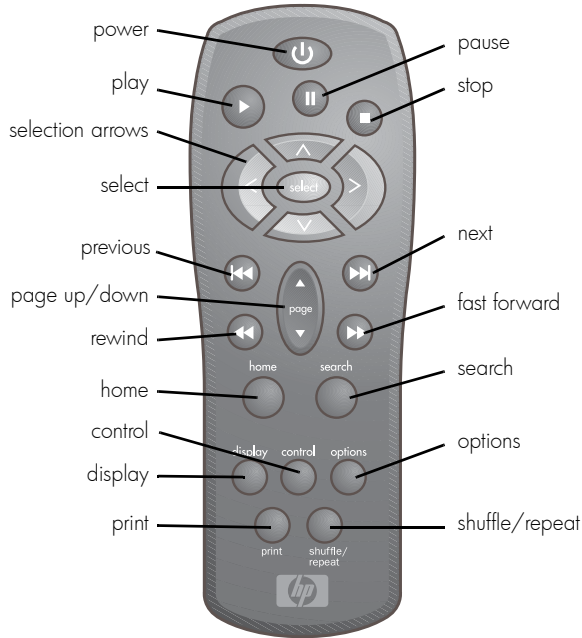
There are two additional hint icons: select and play.

-  The select hint indicates the highlighted option can be selected by the **select** button.
-  The play hint indicates the highlighted option can be played with the **play** button.

menu help

A menu help line appears at the bottom of the screen. This line provides additional help as you navigate through the media receiver menus and options.

remote buttons



power. The power button turns the receiver on, or places the receiver in a low-power standby state.

play, pause, stop. Play, pause, or stop music tracks and photo slideshows.

selection arrows, select. Navigate the onscreen menus with the selection arrows, and press select to choose the highlighted item.

previous, next. Skip to the previous or next track, or skip photos in a slideshow.

page up/down. Page up and down quickly through long menu lists.

rewind, fast forward. Rewind or fast forward through a music track.

home. Jump directly to the home menu screen.

search. Search for a particular music track.

display. Display status information at the top of the screen. Multiple presses will cycle through any additional information.

control. Control a different receiver on your network.

options. Display or change options for the current music file, photo, or album. Also displays the main receiver options when pressed while on the main menu.

print. If a photo file is highlighted, the photo will be printed on your computer's default printer.

shuffle/repeat. Cycle between shuffle, repeat, shuffle and repeat, and original order. Useful when playing music albums or photo slideshows.

menu home

The menu home screen is the top level menu. From the home screen, you can access the music jukebox and the photo album. To jump directly to the home screen, press the **home** button on the remote.

onscreen keyboard

The onscreen keyboard will appear whenever any text entry is required. The keyboard appears when naming your media receiver, entering network addresses, and performing searches.



To use the keyboard, highlight a character with the arrow buttons and press **select**. Highlight and select **Done** when you are finished entering text.

receiver options

The options button is context sensitive. This means it displays options for the currently highlighted menu.

While on the menu home page, press the **options** button to view or change main receiver options. From the main options menu, you can change your receiver preferences, configure your network settings, control other hp digital media receivers, or run the setup wizard.

Within the music jukebox, the **options** button will display options for the highlighted genre, artist, album, or track. For example, highlight a track and press **options**. From the music options menu, select **Track Information** to view the artist and album name, track title, date, and duration.

Similarly, highlight a photo and press the **options** button to print or rotate the photo, view photo information, or adjust the slideshow delay.

See “playing music” on page 23 and “viewing photos” on page 31 for more information on using the **options** button.

changing the receiver name

During setup, the receiver name defaults to “My Receiver”. You can either leave this name or change it to something more meaningful, such as “Living Room” or “Bedroom”. The name is used when allowing access to your servers, or when you are controlling more than one media receiver on your network.

From the home screen, press the **options** button, select **Preferences** and then **Receiver Name**. Use the onscreen keyboard to edit the name.

controlling another receiver

You can control music playback on another receiver if you have more than one media receiver on your network. See “controlling music playback” on page 28.

screen saver

The screen saver will appear after two minutes of inactivity. Press any button on the remote to exit the screen saver.

The screen saver time-out can be changed. From the home screen, press the **options** button, select **Preferences** and then **Screen Saver Delay**. Choose a delay from a minimum of 15 seconds to a maximum of 10 minutes.

Note: If your TV is sensitive to screen burn-in, you should reduce the screen saver delay to a minimum. Consult your TV manual for recommended settings.

running the setup wizard

The setup wizard runs the very first time you setup your hp digital media receiver. If you relocate the receiver or wish to make changes to your settings, you can run the setup wizard again.

From the home screen, press the **options** button, then highlight and select **Run Setup Wizard**.

4 sharing content on your pc

server software

The first step toward sharing content is installing the digital media software on your PC. Simply install the included software on each PC where you store your music or digital photos. For installation instructions, see “installing software” on page 4.

Once the software is installed, the media server icon will appear in your system tray. To configure the server, click on the icon.



The server shares the music and photos on your PC with all media receivers on your network. When you view a photo or music file on your TV, the server sends (serves) the file to your media receiver.

server start and stop

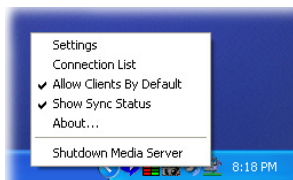
The media server software will start whenever you power on your PC. If the server software is not running, you can access it from the Start menu on the Windows taskbar. On the **Start** menu, click **All Programs**, then **hp digital media**, and select **hp digital media server**. The server icon will appear in your system tray.

To stop the server (and stop sharing your photos and music on your PC), click on the server icon and select **Shutdown** from the server menu.

Note: If the media server is not running, your photos and music will not be available on your hp digital media receiver.

server menu

To open the server menu, click the server icon with your left or right mouse button. The server menu will then display.



sharing content

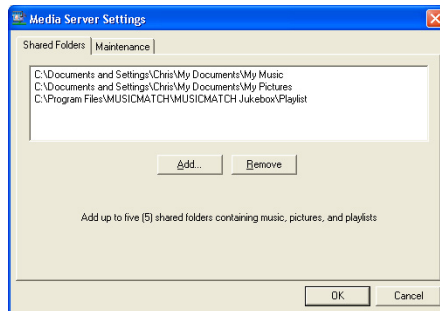
The media server will share content in the following default directory folders:

- My Music
- My Pictures
- MUSICMATCH playlists (if MUSICMATCH Jukebox is installed)

You can share up to five folders per computer. All subfolders within a shared folder are shared as well.

To add or change the shared folders, click on the media server icon and select **Settings**. A dialog will appear with a list of shared folders.

Add folders where your music and photos are stored, or remove folders you no longer wish to share. Depending on the number of files in your folders, it may take some time for the receiver to fully list the new folder contents.



Note: You cannot share folders that reside on a network or on removable drives or CDs. Shared folders must be local (physically attached) to your PC.

synchronizing content

Your music and photos must be synchronized between the server software on your PC, and the hp digital media receiver. This can take several minutes or more the first time, depending on the number of files you are sharing.

While the server software is synchronizing your files, a dialog box will be displayed on your PC. During synchronization, your music and photo files will be unavailable on the media receiver. If all servers are synchronizing, the media receiver will display a help message to let you know that “All servers synchronizing”. Your music and photos will be available once synchronization is complete.



Note: The synchronization status message can be hidden. Click on the server icon and uncheck **Show Synch Status**. Check the option to turn the status message on again. During synchronization, the server icon will display an hourglass.

Synchronization will also occur any time you add or remove files to your shared folders. This occurs very quickly when adding a small number of files or when ripping a CD. If you add or remove shared folders, or drag-and-drop a large subfolder into your shared folder directories, synchronization will take longer.

forcing resynchronization

If you have changed a large number of files, or renamed or restructured your folders, your media receiver may become out of sync with your server.

If some files are not appearing on your media receiver, or they are appearing incorrectly, try resynchronizing the server. Click on the server icon, select **Settings** from the menu, choose the **Maintenance** tab, and click the **Resynchronize** button. This will force a resynchronization of all your shared folders.

Note: When photos are resynchronized, the photo rotation setting will be lost. Photos will again appear in their original orientation. To permanently rotate your photos, use your photo editing software to rotate and save them.

about mediaspace

If you run the media server software on more than one PC on your network, the media receiver will collect all of the content and display it as one unified list. This list is called Mediaspace.

Mediaspace means all your music and photos are available on any of your media receivers at any time. It does not matter where the files are stored.

music quality

Your music listening experience on the receiver depends upon the quality of your digital music files on your PC. Avoid quality settings below 48kbps as they are unsupported. For CD quality music, rip your CDs at 128kbps. In recorders such as MUSICMATCH Jukebox, 128kbps is the default setting.

supported music formats

The following music file formats are supported:

- **mp3**
MPEG Audio file. The standard internet music file format, and the most common.
- **wma**
Windows Media Audio file. Supported by the Microsoft Windows Media player and some music jukebox programs.
- **m3u, pls, and rmp**
A playlist file. This is a text file supported by nearly all music software. A playlist is used for creating and storing lists of music tracks.

recording digital music

It is easy to digitally record your music onto your PC. This process is commonly called ripping. To rip a file with MUSICMATCH Jukebox:

1. Start the MUSICMATCH Jukebox program by selecting it from your **Start** menu, or by double-clicking the MMJB icon on your desktop.
2. Insert a music CD into your CD-ROM drive
3. Click the red recorder button on the player
4. MUSICMATCH will auto-configure your CD-ROM (this only happens once)
5. If you are connected to the Internet, the CD lookup service will auto-enter tag information (album, artist, and song name) into the Recorder screen.
6. Click the box next to the tracks you want to record
7. Click **Record**

The recorded tracks will be placed into your Music Library when completed. If you have that directory

shared (which is the default), the tracks will appear on your hp digital media receiver as well.

MUSICMATCH Jukebox is automatically set to record (rip) music files into the MP3 format at 128kbps, which is widely accepted as CD quality. If you want to change the quality settings:

1. Select **Options/Settings** from the main dropdown menu
2. Click on the **Recorder** tab
3. Adjust the quality and format as desired (48kbps minimum).

copy protection

Some music files are copy protected and can only be played on your computer. Copy protected files cannot be played on your hp digital media receiver. If a file is copy protected, it will not appear in the media receiver music jukebox.

If you plan on sharing and playing music files on your media receiver, turn copy protection off when ripping your own CDs to your PC.

organizing music files

Your music files can be contained in one directory folder, or organized in several subfolders...the folder names are ignored.

The media receiver automatically organize your music files by genre, artist, album, and tracks. This information is obtained from the ID3 tags in each of your music files. The ID3 tag is created for you when you rip (copy) your music from your CD.

However, if your music files have incorrect or incomplete tags, the tracks may not appear where they should in your music jukebox.

MUSICMATCH Jukebox Plus lets you add artist, album and song information to your entire music library quickly and easily with Super Tagging. Automatically tag groups of tracks using the filename, or tag tracks directly from MUSICMATCH online. You can also clean up existing track tags with the new **Rename files from Tag** feature.

For more information on how to edit tags or how to use Super Tagging see MUSICMATCH Help.

creating music playlists

Use your favorite music software on your PC to create music playlists. A playlist allows you to specify exactly what tracks to play and in what order to play them. For example, create a "favorites" playlist and just listen to your favorite tracks. Save the playlist in the industry standard **.m3u** playlist format.

For more information on creating playlists, see "creating a playlist" on page 26.

supported photo formats

The following photo file formats are supported:

- **bmp**
Windows bitmap file. Widely used in Microsoft Windows for pictures and backgrounds.
- **jpg** and **jpeg**
The JPEG format is the Internet and digital photo format standard used by most digital cameras.
- **gif**
Older format still widely available on the internet for photos, web pages, and clip art.
- **png**
Portable Network Graphics standard created in response to limitations in the GIF file format.

organizing photo albums

Unlike music files, photos contain very little information about their content. Therefore, photos are organized by their filename and by the folder they are in. Each folder will become an album on the receiver, and all files in the folder will appear in the album.

Many digital cameras will organize your photos into folders when you connect and unload them to your PC. Each time you dock or connect, a new folder is created using the current date and time, and all photos are copied into that folder.

You can also create your own photo albums. For instance, create a folder in the My Pictures directory called **My Birthday** and copy all your birthday photos into it. Your receiver will show the folder as a photo album named **My Birthday**. To play a slideshow of the album, highlight it and press the **play** button. To view a list of the photos in the album, highlight it and press the **> (right arrow)** button.

Similarly, you can give your photos meaningful names by changing the filename. Most digital cameras will number the photos sequentially. Rename the photo **IM001059.jpg** to **My Birthday Cake.jpg**. The photo will be named **My Birthday Cake** on your receiver.

You can create as many album folders as you need. Create a folder for the year, then create folders inside for each of the months, and then folders in each month for special occasions (birthday, vacation, holidays).

server printers

Photos will be printed 4x6" on the default printer of the PC where they are stored. If you are running the server software on more than one PC, make sure each PC has a default printer. If your PC does not have a printer, no photos can be printed.

For the best prints, use a photo printer with glossy 4x6" photo paper and set it as the default printer.

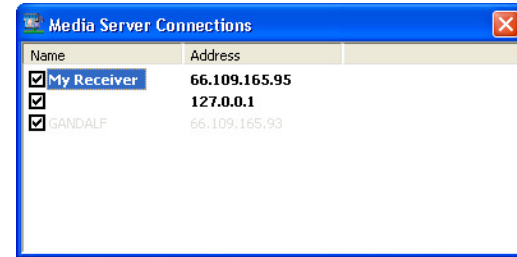
For more information on printing photos, see "printing photos" on page 34.

connection list

Each media server maintains a list of media receivers on your network. By default, the server allows all receivers to view the shared content on your computer. This is the preferred setting for most users.

If you have multiple media receivers, advanced users may wish to restrict the sharing of content. A receiver in the living room may not need access to all the songs on the computer upstairs, or a receiver located in a bedroom may not require content from the office PC.

The solution is the connection list. To view the list, click on the server icon and select **Connection List** from the menu. A window will be displayed, listing all receivers that have ever connected to the server. To hide server content from a particular receiver, uncheck the box next to the receiver name.



If you wish to be prompted before allowing a receiver access to shared content on the server PC, uncheck the **Allow Clients By Default** box. Whenever you attach a new receiver, a message box will appear on the PC asking whether you wish to allow access.

Note: Checking the **Allow Clients By Default** box will not change the status of receivers that have tried to connect before.

power settings

If you want access to your music and photos all the time, make sure to configure your PC's power settings. Do not allow your computer to enter a standby power state, or you will have to "wake up" your PC to view music or photos on your media receiver. However, your monitor can be in a low power state or turned off.

To change your power settings on Windows XP:

1. Click on **start**
2. Select **Control Panel**
3. Select **Performance and Maintenance**
4. Select **Power Options**
5. Change both **System standby** and **System hibernates** to **Never**
6. Click **OK**

To change your power settings on Windows Me:

1. Click on **start**
2. Select **Settings**
3. Select **Control Panel**
4. Select **Power Options**
5. Change both **System standby** and **System hibernates** to **Never**
6. Click **OK**

5 playing music

music jukebox

Playing music on the hp digital media receiver is easy with the music jukebox. The jukebox combines all of the shared music on all of the PCs on your network, organizes the tracks, and displays them in one easy to use menu interface.

For remote button positions and functions, see “remote buttons” on page 10.

supported music files

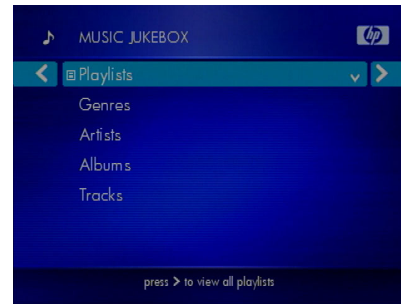
The media receiver supports the two most common music file formats:

- **mp3** MPEG Audio
- **wma** Windows Media Audio

For best results, rip your music files at 128 kbps or higher, with a sample rate of 44.1 kHz. See “recording digital music” on page 17.

playing a track

Once you enter the music jukebox menu, you can view tracks by artist, genre, album, or track name.



Use the **selection arrows** to navigate to the track you wish to play. Once you have found your track, highlight it and press the **play** button on the remote. The track will begin playing on your stereo or television speakers.

The track list contains all of your music tracks...simply scroll or page through the track list to find the track.

To play a track starting from the main home screen:

1. Select **music jukebox**
2. Select **Tracks**
3. Highlight a track name. Use the selection arrows, or use the **page up** and **page down** buttons to quickly move through the track list.
4. Press **play**

browsing for music

There are many ways to browse for a music track. For example, let's use the following music file:

With Arms Wide Open.mp3
Artist: Creed
Album: Human Clay

To browse for this track in the track list:

1. Select **Tracks**
2. Highlight **With Arms Wide Open**

To browse by artist:

1. Select **Artists**
2. Select **Creed**
3. Select **Human Clay**
4. Highlight **With Arms Wide Open**

To browse by album:

1. Select **Albums**
2. Select **Human Clay**
3. Highlight **With Arms Wide Open**

To browse by genre:

1. Select **Genres**
2. Select **Rock/Pop**
3. Select **Creed**
4. Select **Human Clay**
5. Highlight **With Arms Wide Open**

You can also search for music, as shown in the next section.

music icon hints

As you browse your music library, the following icon hints will help you identify music content:



Playlists



Genres



Artists



Albums



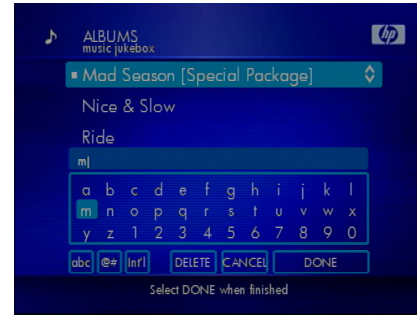
Tracks

These icons appear to the left of the name when the name is highlighted.

searching for music

Some music track lists can be very long and therefore tedious to scroll through...especially if the song you are looking for is at the bottom of the list. The **page up** and **page down** buttons can help you move more quickly. You can also search for a particular song.

When in a track list, press the **search** button. An onscreen keyboard will appear with a search edit box. Use the **selection arrows** to highlight the first letter for your search and press **select**. As soon as you enter a letter, the track list will scroll to the first matching track name.



For example, selecting **M** would search and find **Mad Season**. You can continue to enter letters to find a closer match, or press the **search** button again to clear the keyboard. Now press the **play** button to play your selected song.

Note: For more information about the onscreen keyboard, see “onscreen keyboard” on page 11.

playing an artist

To play all the tracks by an artist, highlight the artist name and press the **play** button. All tracks by that artist will be played.

To view the albums and tracks by the artist, highlight the artist name and press the **right** button instead of the **play** button.

playing an album

To play all the tracks in an album, highlight the album name and press the **play** button. All tracks in the album will be played.

To view the tracks in an album, highlight the album name and press the **right** button instead of the **play** button.

creating a playlist

The hp digital media receiver will play tracks from playlists you create on your computer. The media receiver supports playlists in several standard formats:

- **m3u** MPEG Playlist File
- **pls** MPEG Playlist File
- **rmp** RealJukebox, RealOne Player

Create a playlist with your favorite PC music program, and save it as a supported playlist format.

MUSICMATCH Jukebox

To create a playlist using MUSICMATCH Jukebox:

1. Open the **Music Library** by clicking on the **My Library** tab on the Player. Or go to the menu **View/My Library**.
2. If you have not already done so, add files into your Music Library by double-clicking or dragging tracks from the library into the **Playlist** window.
3. Drag and drop files to change the order of the tracks in the playlist.
4. Click the **Save** button to save the Playlist.
5. When prompted, enter the name you would like to give this playlist in the **Name** field. Click the Save button.

You now have a playlist that you can use on your PC or on your hp digital media receiver. Your playlists will appear under **Playlists** in the music jukebox menu.

Note: MUSICMATCH Jukebox stores playlists in the following directory:

**Program Files\MusicMatch\MusicMatch Jukebox\
\Playlist\Default**

If MUSICMATCH Jukebox was installed before you installed the media server software, this directory is already shared. Otherwise, add this folder to your shared folder list or copy the playlists from the MUSICMATCH directory to your shared music folder.

RealOne Player

RealPlayer Jukebox and RealOne Player store your playlists internally. To share a RealOne playlist, export it into one of your shared media directories. The exported playlist will be stored in the RMP format.

Windows Media Player

Windows Media Player 9 stores playlists in:

My Music\My Playlists

Because the My Music directory is already shared, your playlists are also shared and ready to be played. Remember to save them in a supported playlist format like **m3u**. If necessary, load and resave the playlist in m3u format.

playing a playlist

To play all the tracks in a playlist, highlight the playlist name and press the **play** button. All tracks will be played in the order they appear in the playlist.

To view the tracks in a playlist, highlight the playlist name and press the **right arrow** button instead of the **play** button.

Note: You can play a single track from a playlist. View the playlist tracks, highlight the track you wish to play, and press the **play** button.

controlling music playback

Your media receiver jukebox works just like a stereo or CD player. Controlling your music playback will be an easy and natural experience.

Use the remote to **play**, **pause**, or **stop** music. Press the **previous** and **next** buttons to skip to the previous or next track, or **rewind** and **fast forward** through a song.

displaying music status

Press the **display** button to view information about the currently playing track. Each time you press the **display** button, another page of information will appear. After the final page, the information will clear.



The displayed information includes the track name, the music state (playing, paused, stopped) and the elapsed time.

shuffle and repeat

Once you play a group of tracks (for example, playing an album, an artist, or a playlist), each track will play in the original order listed.

To change the play order, press the **shuffle/repeat** button. There are four play modes:

- **shuffle**. Change the order of the tracks, like you shuffle a deck of cards.
- **repeat**. When the last track is played, repeat the list again.
- **shuffle and repeat**. When the last track is played, shuffle them once more and repeat the list again.
- **normal**. Play tracks in their original order.

The next play mode will be selected each time you press the **shuffle/repeat** button.

viewing track information

To view information about a music track, highlight the track and press the **options** button. From the options menu, select **Track Information**.

The artist, album, track title, file date, and duration will be displayed. To change any of the track information, use MUSICMATCH Jukebox or the music program on your PC. See “organizing music files” on page 18.

viewing photos with music

Your hp digital media receiver is capable of viewing photos and playing music simultaneously.

Once you have started playing your selected music, return to the home screen (press the **home** button on the remote). Select **photo albums** and view your photos while listening to music.

Note: To learn how to associate a playlist with a photo album, see “playing music with slideshows” on page 33.

controlling music during slideshows

While a photo slideshow is playing, the **play**, **pause**, **stop**, **previous**, and **next** buttons will control the photo slideshow.

To control the music while a photo slideshow is playing, press the **display** button repeatedly until you see the music status. While the music status is displayed, the remote buttons will control the music playback. Pressing **pause** will pause the music and not the slideshow.

To return control to the photo slideshow, press the **display** button until the status screen disappears.

changing the view order

Tracks can be listed by their original order, or alphabetically by track name.

To change the view order, press the **options** button while viewing a track list. Select **Change View** and then choose your viewing order preference.

controlling other receivers

If you have more than one hp digital media receiver on your home network, you can use a single media receiver to control music playback on all of them.

For example, there is a media receiver in the living room and one in the bedroom. The receiver in the bedroom is connected to speakers, but may not be connected to a TV (or the TV is off). From the living room, you can select the bedroom receiver and start or stop music playback in the bedroom. This feature is very useful for locations where you want music but may not have a television.

To control another receiver on your network:

1. Press the **control** button on the remote
2. If there are other media receivers on your network, a message at the top of the screen will display the name of the receiver you are now controlling. For example, "controlling: bedroom".
3. Press the **control** button repeatedly until you find the media receiver you wish to control.

Once you are controlling another receiver, browse the music jukebox and play an album...music will start playing on the bedroom speakers. You can also stop or start music, pause and skip tracks using the remote.

To return control back to the receiver in front of you, press the **control** button until the controlling message goes away.

Note: Alternatively, press the **options** button on the home screen and choose **Select Receiver**. A list of available media receivers will appear. Highlight the receiver you wish to control and press **select**.

6 viewing photos

photo albums

Viewing photo albums on the hp digital media receiver is easy. The media receiver photo album combines all of the shared photos on all of the PCs on your network, organizes them by album, and displays them in one easy to use menu interface.

supported photo files

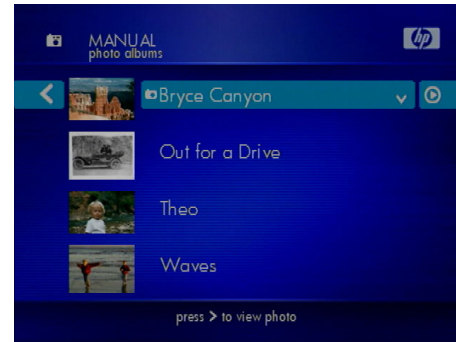
The media receiver supports the most common digital photo file formats:

- **bmp** Windows Bitmap
- **jpg** JPEG
- **gif** Graphics Interchange Format
- **png** Portable Network Graphics

For more information about these file formats, see “supported photo formats” on page 19.

viewing a photo

Once you enter the **photo album** menu, you can view your list of photo albums and photos. Beside each album or photo is a small thumbnail of the photo.



Use the **selection arrows** to navigate to the album or photo you wish to view. Highlight and press the **select** button to view the photo, or press the **right arrow** to view a list of photos in an album.

photo and album icon hints

A photo thumbnail appears before each photo or album name. As you browse your photos, the following icon hints will help you identify photos and albums:



Photo



Album

These icon hints will appear just after the thumbnail image, and before the photo or album name.



playing a photo slideshow

To start playing a photo slideshow, highlight a photo or album and press the **play** button. Your selected photo will display, and after a brief delay, it will be followed by the next photo in the album.

The slideshow will display all photos in the album, and all photos in any sub-albums. When the end of the photo album is reached, the slideshow will repeat.

controlling photo playback

Controlling photo playback is very similar to controlling a CD player...instead of music tracks, there are photos.

Once you have started a photo slideshow, use the remote to **play**, **pause**, or **stop** the show. Press the **previous** and **next** buttons to skip to the previous or next photo.

The default slideshow delay is five seconds. Before starting a slideshow, you can change the delay between photos by highlight a photo album and pressing the **options** button. Select **Photo**

Preferences, and then **Slideshow Delay**. The delay can be set from three seconds to two minutes at convenient intervals. To exit a slideshow, press the **left arrow**.

viewing photo information

To view information about a photo, highlight the photo and press the **options** button. From the options menu, select **Photo Information**. The file name, photo size, and file date will be displayed.

Note: To display the photo name during a slideshow, press the **display** button.

playing music with slideshows

Your hp digital media receiver is capable of viewing photos and playing music simultaneously.

First, select the music you wish to play. For help with selecting and playing music, see "music jukebox" on page 23. Once you have started playing your selected music, select and view your photos as you normally would. Browsing photos works the same whether music is playing or not.

setting music for an album

Perhaps you have a wedding photo album and you always want to play the songs from your wedding while viewing the album. Follow these simple steps:

1. Create a wedding music playlist on your PC. For help, see "creating a playlist" on page 26.
2. On the media receiver, highlight the wedding photo album and press the **options** button.
3. Select the **Music** option
4. Choose your wedding playlist and press **select**
5. Press **left arrow** to exit the playlist menu
6. Press **left arrow** or **options** again to exit.
7. Press **play** to view your slideshow, now with music!

Whenever you view that photo album, the wedding playlist will play music automatically.

printing photos

To print a photo, highlight it on your receiver and press the **print** button on the remote. You can also print a photo by pressing the **options** button and selecting **print photo** from the photo options menu.

Photos will be printed 4x6" on your computer's default printer. For the best prints, use a photo printer with glossy 4x6" photo paper and set it as the default printer. For more information, see "server printers" on page 20.

rotating photos

You can use the media receiver to rotate photos for proper viewing on your TV. To rotate a photo:

1. Highlight or select a photo
2. Press the **options** button and select **Rotate Photo**
3. Rotate the photo 90 degrees left or right, or 180 degrees if the photo is upside down.

The photo will be rotated for viewing.

Note: Your original image file is untouched. If you force a resynchronization (see "forcing resynchronization" on page 15), the photo will return to its original rotation. To permanently rotate a photo, use a photo editing program.

changing the view order

Photos can be listed by their original order, or alphabetically by photo name.

To change the view order, press the **options** button while viewing a photo album. Select **Change View** and then choose your viewing order preference.

organizing your photos

Photos are organized by the folder directory they appear in, and by their filename. To create a photo album, create a folder in the shared directory on your computer. Copy your photos into the new folder and your album is complete.

For more help with organizing your photos, see "organizing photo albums" on page 19.

7 network setup

running the setup wizard

Running the setup wizard is the easiest way to configure your network settings. The setup wizard runs the first time you power up your hp digital media receiver.

You can run the setup wizard again at any time if your network settings need to be changed. From the home screen, press the **options** button and then select **Run Setup Wizard** from the menu.

Alternatively, press the **options** button and select **Network Setup** to manually configure your network settings. The following sections describe the possible network setup options.

preparing for wired setup

In a wired network, you attach the media receiver to your network with a network cable. One end of the

cable attaches to the media receiver, and the other end attaches to your PC, a hub, or a router.

Note: See the “glossary” on page 49 for a list of common network terms.

To determine the proper network setup of your media receiver, you will need to know what kind of wired network you have.

do you have a network?

If you have a single PC and you connect to the internet with a phone line, chances are you do not have a network. At a minimum, you will need a network interface card (NIC) for your PC, or a USB-to-802.11b dongle. You can then attach the media receiver to your PC. See “wired with cross-over cable” on page 39.

If you have a single PC and you connect to the internet with a cable or DSL modem, check your modem connection. If the modem has only one network jack, you still don’t have a network. You will need to

purchase a different modem or add a router to your network.

Note: You can create a network of PCs without access to the internet. The internet is simply a common reason to network PCs together.

If you have multiple PCs and can share files between them, or all of the PCs can access the internet through a cable or DSL modem, then you do have a network. However, you will need to determine how your server PC (the PC running the hp media software) is assigned a network address.

hubs, routers and switches

When PCs are networked together, each PC is attached to a central “box” with 4, 8, 16 or more connections. This box is either a hub, a router, or a switch. They all operate in a similar way, with one important difference: a router will assign a network address dynamically, while a hub or switch will not.

network address: static or dynamic?

A PC (or any network device) is either assigned a network address manually (a static address), or

another device on the network (a DHCP server or router) assigns the address dynamically.

To determine your address settings under Windows XP:

1. Click on **start**
2. Click **All Programs**, then **Accessories**, then **Command Prompt**
3. At the prompt, type **ipconfig /all**
4. Look for the line **Dhcp Enabled** (you may have to scroll back to see it)

To determine your address under Windows Me:

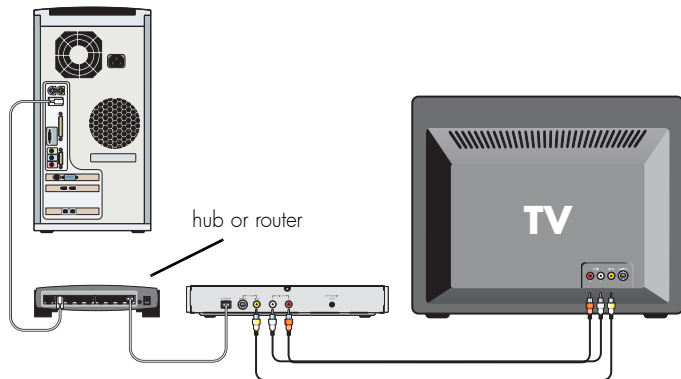
1. Click on **start**
2. Click **Run...**
3. At the prompt, type **winipcfg** and click **Ok**
4. Click the **Details...** button
5. Look for the line **DHCP Server** (if it has an address, DHCP is enabled)

If DHCP is enabled, you have a DHCP server on your network. See “wired with dynamic address” on page 37.

If DHCP is not enabled, you will need to assign a static address to your media receiver. Take note of the **IP Address** and **Subnet Mask** listed by the ipconfig utility, and see “wired with static address” on page 38.

Note: If you cannot tell how your network addresses are assigned, then try dynamic address (DHCP) first. The media receiver will display an error message if it is unable to dynamically configure its address.

wired home network



In a wired home network, all computers are connected to a network hub or router. This may also act as a cable/DSL modem for sharing an internet connection.

wired with dynamic address

Connect the media receiver to your router, just as you would one of your computers. In almost all cases, the router works as a DHCP server (i.e., it assigns network addresses).

Set the media receiver network settings to wired using DHCP addressing. From the main home screen:

1. Press **options**
2. Select **Network Setup**
3. Set **Connection** to **Wired (Ethernet)**
4. Select **Address**
5. Set **Configuration** to **DHCP**
6. Press **left arrow** to return to receiver options
7. Select **Apply Changes** to apply the network changes

Once the media receiver restarts you will be returned to the main home screen. If there are no error messages, your network settings are properly configured.

wired with static address

If a DHCP server is not available, you must assign the media receiver a static address that is valid for your network. The address must be very similar to the address used by your PC, and it cannot be in use by another network PC or device.

It is best to determine the addresses of all your PCs before assigning one to your media receiver. Use the method described in “network address: static or dynamic?” on page 36 to find the static addresses in use, and then pick an available address.

For example, you have three PCs on your network:

- PC1: 192.168.0.2
- PC2: 192.168.0.17
- PC3: 192.168.0.11

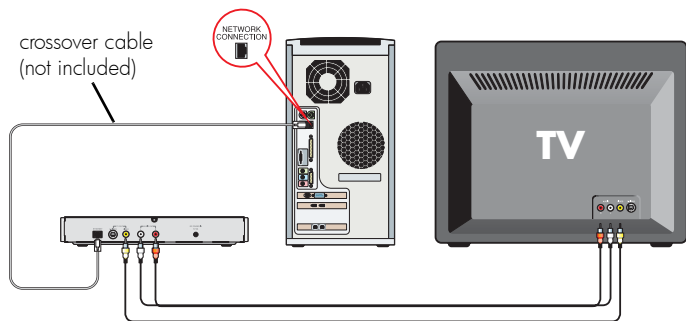
All with a netmask of 255.255.255.0. For the media receiver, pick an unused address like 192.168.0.20 and use the same netmask of 255.255.255.0. Write the addresses down for future reference.

To configure the receiver for the static address:

1. Press **options**
2. Select **Network Setup**
3. Set **Connection** to **Wired (Ethernet)**
4. Select **Address**
5. Set **Configuration** to **static**
6. Set the **IP Address** to **192.168.0.20**
7. Set the **Netmask** to **255.255.255.0**
8. Press **left arrow** to return to receiver options
9. Select **Apply Changes** to apply the network changes

The media receiver will restart and if the media server software is running, you should see your photos and music content.

wired with cross-over cable



If you don't have a home network, it is still possible to access your music and photos on a single PC. Connect a network crossover cable (not included) from the media receiver to the network connection on your PC. If your PC does not have a network connection, you will need to purchase a network card.

Choose a static address for your PC and one for your media receiver. For example, you can use 192.168.0.1 for your PC, and 192.168.0.2 for your media receiver. Use a netmask of 255.255.255.0 for both.

To configure the receiver for a cross-over cable:

1. Press **options**
2. Select **Network Setup**
3. Set **Connection** to **Wired (Ethernet)**
4. Select **Address**
5. Set **Configuration** to **static**
6. Set the **IP Address** to **192.168.0.2**
7. Set the **Netmask** to **255.255.255.0**
8. Press **left arrow** to return to receiver options
9. Select **Apply Changes** to apply the network changes

Follow the instructions that came with your network card for setting a static IP address of 192.168.0.1 on your PC.

preparing for wireless setup

The hp digital media receiver model ew5000 supports wireless networking. If your model does not have an antenna, it does not support wireless networking.

For the best results, you should set up and test your wireless network before attempting to use the media receiver wirelessly. This will rule out any problems with your network.

scanning for wireless networks

The media receiver will scan for available networks. You should know the name of your wireless network, as the receiver may pick up other wireless networks (wlans) in your area. The network name is sometimes called the SSID.

Note: Your network must broadcast its name for the receiver to find it. Do not use silent broadcast.

wireless reception

Wireless reception will vary on distance, access point manufacturer, number of walls, and environment. If possible, try setting up the media receiver in an area

that is close to your PC or wireless access point. Once everything is working properly, you can experiment with placement and distance.

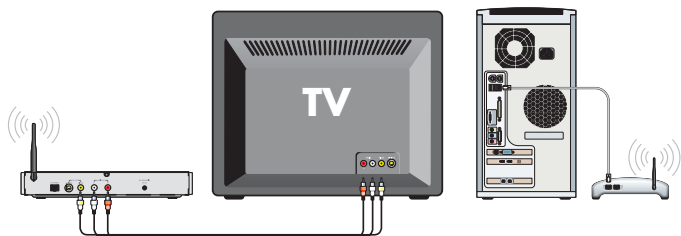
wireless infrastructure or ad hoc?

These are intimidating names for some very simple concepts.

In Infrastructure mode, a wireless access point exists on the network. The access point can be attached to a hub or router, or the router can act as a wireless access point as well. All PCs and wireless devices communicate through the access point.

If you do not have a wireless access point or router, you can use Ad Hoc mode. Ad Hoc allows communication between a PC with a wireless card and the media receiver. Communication occurs between the devices directly without the need for an access point.

wireless infrastructure



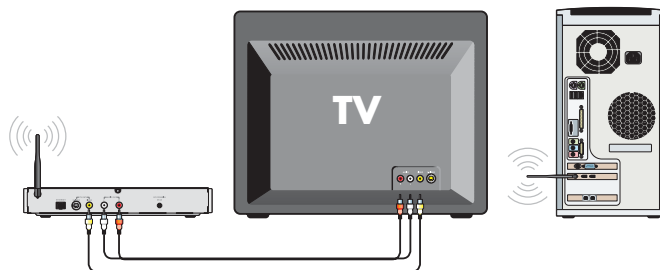
Most wireless networks communicate in infrastructure mode. To configure the media receiver network settings for wireless infrastructure and DHCP dynamic addressing:

1. Press **options**
2. Select **Network Setup**
3. Set **Connection** to **Wireless (Infrastructure)**
4. The receiver will scan for wireless local area networks (WLAN). Select **WLAN** to choose your wireless network if it is not already chosen.
5. Select **Address**
6. Set **Configuration** to **DHCP**

7. Press **left arrow** to return to receiver options
8. Select **Apply Changes** to apply the network changes

After restarting, verify the media receiver is able to view photos and play music.

wireless ad hoc



In Ad Hoc mode, an access point does not exist and the media receiver communicates directly with computers containing wireless network cards. It is similar to a static network, without wires.

You will need to assign a static address to the media receiver that is appropriate for your network. Use the

method described in “network address: static or dynamic?” on page 36 to find the static addresses in use, and then pick an available address.

Note: If you have other wireless PCs or devices, determine all of the addresses before assigning one to your receiver. Do not assign the same address to more than one device.

For example, you can use 192.168.0.1 for your PC, and 192.168.0.2 for your media receiver. Use a netmask of 255.255.255.0 for both.

To configure the media receiver network settings for wireless ad hoc mode and static addressing:

1. Press **options**
2. Select **Network Setup**
3. Set **Connection** to **Wireless (Ad Hoc)**
4. Select **Address**
5. Set **Configuration** to **static**
6. Set the **IP Address** to **192.168.0.2**
7. Set the **Netmask** to **255.255.255.0**
8. Press **left arrow** to return to receiver options

9. Select **Apply Changes** to apply the network changes

Follow the instructions that came with your wireless network card for setting a static IP address of 192.168.0.1 on your PC.

wireless encryption

For security reasons, a wireless network can encrypt the network packets broadcast between devices. This type of encryption is called Wired Equivalent Privacy, or WEP.

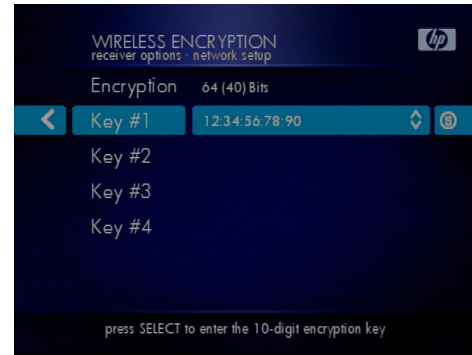
There are two levels of WEP encryption: 64 and 128 bit. You may have heard the numbers 40 and 104 bit used in conjunction with WEP encryption. These are just two different names for the same encryption method. Because there has been no official standardization of these terms, wireless vendors may use either name.

Whether you choose 64 or 128 bit is up to you. You must balance higher security versus slower network performance.

WEP is supported in both infrastructure and ad hoc mode. For WEP to work properly, you must use the same encryption level and keys on all your PCs, access points, and media receivers. Check the WEP settings on your access point or PC, then write down the encryption level and WEP keys.

To configure the media receiver for WEP:

1. Press **options**
2. Select **Network Setup**
3. Highlight **Wireless Encryption** and press the **right arrow**
4. Select **Encryption** and choose **off**, **64 (40) Bit**, or **128 (104) Bit**.
5. Select **Key #1** and enter the WEP key. An onscreen keyboard will appear for entering the key. Entering the colon separator **:** is optional.
6. Enter **Key #2**, **Key #3**, and **Key #4** if needed
7. Press the left arrow to exit the encryption options
8. Select **Apply Changes** to apply the network changes



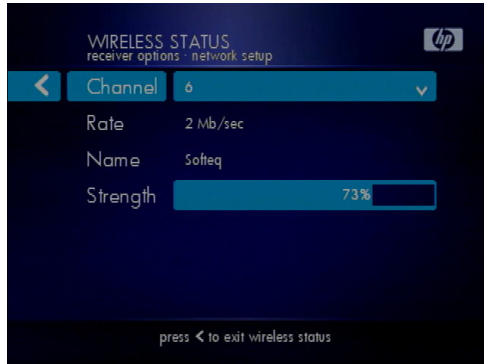
Some network devices allow the use of a text passphrase for the WEP key. After you enter the passphrase on that device, view the encryption keys that were generated. Write down the keys and enter them into the **Key** fields on the media receiver.

Note: If you have trouble connecting to the media server after enabling WEP, verify you have entered the keys correctly. The keys can be long and input errors are easy to make.

wireless signal strength

A lot of factors can affect the signal strength of the wireless network. Antenna position, location of the media receiver, distance, walls and environment all affect the signal. For good reception, adjust the antenna so it is pointing up.

Use the signal strength meter to adjust the position of your media receiver or antenna. The higher the signal strength, the better.



on this screen, the signal strength is 73%

To view the signal strength, from the home screen:

1. Press **options**
2. Select **Network Setup**
3. Highlight **Wlan** and press the **right arrow**
4. The **Wireless Status** screen will appear
5. Press the **left arrow** to exit

The signal strength percentage is a snapshot of the current signal strength...it does not update while you are viewing it. Whenever you make a change to the receiver or antenna position, press the **right arrow** on the **Wlan** option to view the new signal strength, then the **left arrow** again to exit. Repeat the process again until you are satisfied.

8 troubleshooting

I don't see the Welcome Screen when I turn on my receiver for the first time

- Make sure your TV is displaying the appropriate video source. You may need to use the **Input**, **Source**, **Select**, or **TV/Video** button on your TV or TV remote to change video sources. If you are having trouble changing the video source, refer to the instructions that came with your TV.
- If you did not connect the receiver directly to your TV but are instead passing the signal through your VCR, make sure your VCR is displaying the appropriate video source. You may need to use the **Input** or **Source** button on your VCR or VCR's remote control. Some VCRs only pass the signal through when they are turned off. If you are having trouble displaying the correct video source, refer to the instructions that came with your VCR.
- Make sure cables are connected to the IN jack on your TV or VCR, not the OUT jack.

- The cables you are using to connect your receiver to your TV or other equipment may be damaged or defective. Try exchanging the cables connected to the receiver with other cables that you know are working properly.
- Make sure you have firmly attached the power adapter plug to the back of the receiver. Also, verify the power adapter is plugged into a working power outlet and that the outlet is not controlled by a light switch.

My remote control isn't working

- Make sure the batteries are inserted correctly.
- Try removing the batteries and reinserting them without touching any buttons on the remote control.
- Replace the batteries with new ones.

I can't see any of my music or photos

- Make sure your computer is powered on and that it has not entered standby mode. Change your computer's power settings if you want your content to always be available.
- Make sure the server software is running on your computer. Look for the media server icon in your system tray. If necessary, start the server software again.
- Click on the server icon and select Settings to Verify you are sharing the correct directories.
- If you are using a wireless network, try locating the receiver closer to your access point or wireless computer.
- If you are using a wired network, verify the receiver network cable is properly attached to your network hub or router, and that the hub or router has power.
- If you are using static network addresses, verify the network address and netmask are correct for your network, and that the address is not already in use by another PC or device.

I can't hear any sound when I'm playing music

- Make sure the audio cables are properly connected.
- If the audio cables are connected to your TV, the TV must be on to hear any music.
- If the audio cables are connected to your stereo, make sure the stereo is on and you have the correct stereo input source selected. If you are having trouble selecting the correct audio source, refer to the instructions that came with your stereo.
- To perform an audio test, select the **music jukebox** and then press the **options** button. Select the **audio test** option to play a brief audio test on your speakers.

Some of my music files don't appear

- The hp digital media receiver supports the most common music file formats. However, there are almost an infinite variety of bit rates and sample rates. If a file does not appear on the receiver, it most likely uses an unsupported rate.

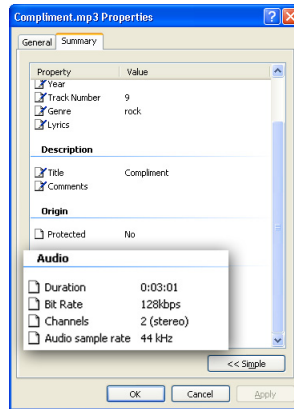
- The files may be copy protected. To share your files, turn copy protection off when you rip them.
- The following sample rates are supported: 4, 8, 16, 22.05, 24, 32, 44.1, 48, 88.2 and 96 kHz.
- For best results, rip your music files at 128 kbps or higher, with a sample rate of 44.1 kHz.

To check the bit and sample rates of a music file, right click on the filename and select **Properties**.

Select the **Summary** tab and scroll to the bottom of the list.

The file to the right has a bit rate of 128 kbps and a sample rate of 44 kHz.

In most cases, you don't need to worry about the sample rate unless you come across a file that will not play or appear on your receiver. Use the above procedure to check the file settings for supported rates.



When I push the Print button, nothing prints

- Printing is supported for photos. If a music file, music album, or photo album is selected, nothing can be printed.
- Photos will be printed 4x6" on your computer's default printer. If your computer does not have a printer, no photos can be printed.
- For the best prints, use a photo printer with glossy 4x6" photo paper.

I created a playlist on my computer, but it doesn't appear on my receiver

- Make sure the playlist file is located in a folder shared by your receiver. Copy the playlist to your shared music folder, or click on the media server icon to add or change your folder options.
- Make sure you save the playlist in the industry standard **.m3u** playlist format. This is the only format supported by your receiver. Load your playlist into your music software and select **Save As...**, then choose the **.m3u** format.

My receiver can't find my access point

- Verify that your access point is not broadcasting silently.
- Try moving the receiver closer to your access point.
- Check your WEP settings. See “wireless encryption” on page 42.

My receiver finds my access point, but won't connect

- Most likely your WEP settings are incorrect. See “wireless encryption” on page 42.
- Try resetting the power on the access point.

How do I reset my media receiver?

- Under normal circumstances, you should not need to reset your receiver. However, to fully reset the media receiver, disconnect the power adapter from the back. Wait a few seconds, then plug the power back in.

My media receiver has no antenna

- Some receiver models support only wired networks. An antenna is only required for wireless network support. If you need support for a wireless network, purchase a media receiver with wireless capability, such as the hp digital media receiver ew5000.

What version of software do I have?

- From the main home screen, press the **options** button and select **Preferences**. The software version will be listed.

9 glossary

10BaseT. The first Ethernet standard, which operated at 10Mbps (megabits per second). Also known as simply Ethernet.

802.11. Standard specifying the characteristics for wireless local area networks.

access point. An internetworking device that seamlessly connects wired and wireless networks together.

ad hoc. One of two types of wireless networking, usually used for smaller networks. Computers communicate directly with each other without an access point.

album. An album of music released by an artist, or a group of photos stored in a folder on a hard disk.

bmp. A Microsoft Windows standard for storing bitmapped images (photos).

cable modem. A class of modem that is used for connecting to a cable TV network which offers Internet service.

category 5. A type of cabling used by Ethernet networks. Category 5 cable is rated for 100Mbps.

cross-over cable. Most network cables are straight-through cables. A cross-over cable has the send and receive connections swapped, which is useful when connecting two network devices together without a hub, router, or switch.

DHCP. Dynamic Host Configuration Protocol. Allows the assigning of network IP addresses dynamically (automatically).

DRM. Digital Rights Management. Some music files have security built in so they cannot be copied.

DSL modem. A class of modem used for connecting a digital subscriber line.

dynamic address. See DHCP.

ethernet. A popular network technology for connecting PCs and other devices. Also called 10BaseT.

folder. Another name for a subdirectory on a PC. A folder contains other files, such as music or photos.

genre. A type of music, such as rock, country, or classical. There are many music genres.

gif. Graphical Interchange Format. A popular format for storing images.

hub. A device that interconnects computers and network devices, sometimes amplifying the signals between them.

icon. A small graphical picture.

ID3 tag. A tagging system that allows the storage of music information such as artist, song title, and album title within the audio file.

infrastructure. One of two types of modes used for wireless networking. Computers and devices communicate through a common access point. Access points transmit data to PCs equipped with wireless

network adapters, which can roam within a certain range of the access point.

IP address. Internet Protocol address, sometimes referred to as a network address. This is a series of twelve numbers that uniquely identifies a client on the network. For example, 192.168.0.1.

jack. A jack is a socket for attaching a network cable.

LAN. Local Area Network. A smaller network that typically spans a single building or campus.

mp3. An MPEG audio file. This is a very popular format for storing digital music.

network. A collection of PCs, printers, and devices that are connected together in order to share resources.

network adapter. See NIC.

network address. See IP address.

network cable. A cable similar to a telephone line, except larger. A telephone cable typically has four wires, and a network cable has eight. Also called an RJ-45 cable.

NIC. Network Interface Card. Also called a network adapter, a NIC is a device that connects a PC to a network. Usually this is a card that installs in the PC.

PC. A personal computer.

playlist. A file containing a list of music files used to play tracks in a particular order. The most common playlist format is m3u.

png. Portable Network Graphics. A popular graphics file format for storing images.

receiver. In this document, refers to the hp digital media receiver.

ripping. A slang term for converting a music CD into compressed music files. Music tracks are ripped from the CD, compressed, and stored digitally on a hard disk.

RJ-45 cable. See network cable.

router. A device similar to a hub. A router moves data between different network segments, and allow all users in a network to share a single connection to the internet.

server. A computer or software program that provides services to clients. In this document, the term server refers to the hp digital media software running on a PC.

SSID. Service Set Identifier. A network ID unique to a network. Only clients and Access Points that share the same SSID are able to communicate with each other. This string is case-sensitive.

static address. A network address that does not change and usually assigned manually.

switch. A device similar to a hub, but smarter. It improves network performance by reducing competition for bandwidth.

systray. The Windows system tray, usually located in the lower right corner of the display.

tag. See ID3 tag.

WEP. Wired Equivalent Privacy. A method of encryption designed to give wireless networks the same security found on wired networks.

wi-fi. Wireless Fidelity. Another term for wireless networking using the 802.11 standard.

WLAN. Wireless Local Area Network. A wireless LAN does not use cable to transmit signals, but rather uses radio to transmit packets through the air.

wma. Windows Media Audio file. A popular format for storing digital audio files, created by Microsoft and used by Windows Media Player.

10 warranty and license

ATTENTION: USE OF THE HP DIGITAL MEDIA RECEIVER OPERATING SYSTEM (the "SOFTWARE") IS SUBJECT TO BOTH THE HP LICENSE AND WARRANTY TERMS SET FORTH BELOW AS WELL AS ANY LICENSE TERMS IN THE PHYSICAL MEDIA. USING THE SOFTWARE INDICATES YOUR ACCEPTANCE OF ALL OF THESE LICENSE TERMS. IF YOU DO NOT ACCEPT ALL OF THESE LICENSE TERMS, (EXCEPT FOR THE GNU GPL AND GNU LGPL, FOR WHICH ACCEPTANCE OF THEIR PARTICULAR TERMS ARE ONLY REQUIRED AS SPECIFIED IN THOSE LICENSES) YOU MAY NOT INSTALL OR USE THE SOFTWARE. ANY ATTEMPT TO INSTALL OR USE THE SOFTWARE IN A MANNER THAT DOES NOT COMPLY WITH THE TERMS AND CONDITIONS OF THIS LICENSE IS VOID AND WILL TERMINATE YOUR RIGHTS UNDER THIS LICENSE. IF YOU DO NOT ACCEPT ALL OF THESE LICENSE TERMS (EXCEPT FOR THE GNU GPL AND GNU LGPL, FOR

WHICH ACCEPTANCE OF THEIR PARTICULAR TERMS ARE ONLY REQUIRED AS SPECIFIED IN THOSE LICENSES), YOU MAY RETURN THE ENTIRE UNIT TO THE VENDOR WITHIN THE VENDOR'S RETURN POLICY.

This Software contains portions of third party software some of which is proprietary to that third party, some of which is open source software, including: uClibc - LGPL, uClinux - GPL, and MusicMatch (the "Bundled Product"). Additional license and warranty terms associated with the Bundled Product may appear in files with the Bundled Product on this CD. By using this Software, you are expressly agreeing to comply with all the license terms accompanying the Bundled Product (except for the GNU GPL and GNU LGPL, for which acceptance of their particular terms are only required as specified in those licenses).

HP Warranty and License Information

HP Customer Care

Easy to reach. Easy to use. HP Customer Care is our promise to help you get the most from owning your HP Digital Media Receiver. By Web, phone, or through your local retailer, you'll find what you need. And you'll find it fast. Be sure to register your HP Digital Media Receiver to get the full benefits of HP Customer Care. The brief information you provide helps HP Customer Care respond to you faster with more personalized proactive support options.

Problems? HP Will Help

Your new HP Digital Media Receiver is built to work now - and for many years to come. But, it is a complex, and sometimes things go wrong. If that happens to your product, Hewlett-Packard is ready to help. Here's how.

What to Do First: See What You Can Do

There's lots of helpful information included with your HP Digital Media Receiver. The HP At Home Web site, www.hp.com/cposupport, has updated software, tips and tricks, common problems, and solutions.

What to Do Next: Call HP Customer Care Center

Finally, if these steps don't help, you can reach a real, knowledgeable human by calling the HP Customer Care Center at 1-208-323-2551 in the U.S., and 1-905-206-HOME (1-905-206-4663) in Canada. Technical phone assistance to help diagnose potential hardware issues is free for the duration of the hardware warranty period. The HP Customer Care Center is available 24 hours a day and 7 days a week.

And, if Necessary: Get Repair

Consumer Replaceable Parts

You can easily replace some of the HP Digital Media Receiver parts yourself, (i.e. remote control or cables). This is the fastest method of repair, as many times we can send the part directly to your home or business in a few days. We pay the shipping and handling. This service is free for the duration of the hardware warranty period.

HP Unit Exchange Service

If you encounter a hardware failure in the product itself, we will send you a refurbished replacement unit. You return the defective unit to us. We pay the shipping and handling both ways. This service is free for the duration of the hardware warranty period.

The Legal Language

Hewlett-Packard Limited Warranty Statement

DURATION OF LIMITED WARRANTY

Hardware:

Original Systems - 1 year

Replacement Systems - For the duration of original product warranty or 90 days, whichever is longer

Technical phone assistance to diagnose potential hardware issues - 1 year

HP warrants to you, the end-user customer, that HP hardware, accessories, and supplies will be free from defects in materials and workmanship after the date of purchase.

Original Systems - 1 year

Replacement Systems - For the duration of the original product warranty or 90 days, whichever is longer.

If HP receives notice of such defects during the warranty period, HP will replace products that prove to

be defective. Replacement components may be either new or like new. Replacement product will be refurbished.

HP warrants to you that HP software will not fail to execute its programming instructions after the date of purchase, for 30 (thirty) days, due to defects in material and workmanship when properly installed and used. If HP receives notice of such defects during the warranty period, HP will replace software media, which does not execute its programming instructions due to such defects.

HP does not warrant that the operation of HP products will be uninterrupted or error-free. If HP is unable, within a reasonable time, to repair or replace any product to a condition as warranted, you will be entitled to a refund of the purchase price upon prompt return of the product. Refunds with the first 3 months of ownership will be refunded at 100% of purchase price. Refunds within 3-6 months of ownership will be refunded at 85% of purchase price. Refunds within 6-9 months of ownership will be refunded at 55% of purchase price. Refunds within 9-12 months will be refunded at 35% of purchase price.

HP products may contain remanufactured parts, which are equivalent to new in performance or may have been subject to incidental use.

Warranty does not apply to defects resulting from (a) improper or inadequate maintenance or calibration, (b) software, interfacing, parts, or supplies not supplied by HP, (c) unauthorized modification or misuse, (d) computer viruses of any origin, (e) operation outside of the published environmental specifications for the product, (f) improper site preparation or maintenance, or (g) unplanned acts of nature, such as floods, tornadoes, lightning strikes, hurricanes, or earthquakes.

HP MAKES NO OTHER EXPRESS WARRANTY OR CONDITION WHETHER WRITTEN OR ORAL. TO THE EXTENT ALLOWED BY LOCAL LAW, ANY IMPLIED WARRANTY OR CONDITION OF MERCHANTABILITY, SATISFACTORY QUALITY, OR FITNESS FOR A PARTICULAR PURPOSE IS LIMITED TO THE DURATION OF THE EXPRESS WARRANTY SET FORTH ABOVE. Some countries/regions, states, or provinces do not allow limitations on the duration of an implied warranty, so the above limitation or exclusion might not apply to you. This warranty gives you

specific legal rights and you might also have other rights that vary from country/region to country/region, state to state, or province to province.

HP's limited warranty is valid in any country/region or locality where HP has a support presence for this product and where HP has marketed this product. The level of warranty service you receive may vary according to local standards. HP will not alter form, fit, or function of the product to make it operate in a country/region for which it was never intended to function for legal or regulatory reasons.

TO THE EXTENT ALLOWED BY LOCAL LAW, THE REMEDIES IN THIS WARRANTY STATEMENT ARE YOUR SOLE AND EXCLUSIVE REMEDIES. EXCEPT AS INDICATED ABOVE, IN NO EVENT WILL HP OR ITS SUPPLIERS BE LIABLE FOR LOSS OF DATA OR FOR DIRECT, SPECIAL, INCIDENTAL, CONSEQUENTIAL (INCLUDING LOST PROFIT OR DATA), OR OTHER DAMAGE, WHETHER BASED IN CONTRACT, TORT, OR OTHERWISE. Some countries/regions, states, or provinces do not allow the exclusion or limitation of incidental or consequential damages, so the above limitation or exclusion may not apply to you.

The above warranty is transferable upon sale.

Customer Responsibilities

You may be required to run HP-supplied diagnostic programs before replacement is dispatched, or a replacement product is shipped.

You are responsible for the security of your proprietary and confidential information and for maintaining a procedure external to the products for reconstruction of lost or altered files, data, or programs. Additionally, the customer is responsible for removing any components that were added after the purchase of the system. HP will not be responsible for components that the customer doesn't remove.

Obtaining Hardware Warranty Repair Service

For the duration of the hardware warranty period, hardware repair service includes Consumer Replaceable Parts Service, and Unit Exchange Service as described below. To obtain hardware warranty service, call HP's Customer Care Center at

1-208-323-2551 in the U.S., and 1-905-206-HOME (1-905-206-4663) in Canada.

Consumer Replaceable Parts Service

Components such as the remote and remote control and cables, may be serviced through expedited part shipment. In this event, HP will send you the component.

HP Unit Exchange Service

In the event of a hardware failure in the product itself, we will send you a refurbished replacement product equivalent to or with higher performance than your original system. When it arrives, pack the defective product in the replacement's box, and return it to HP using the enclosed prepaid mailer.

HP Software Product License Agreement

The HP Software License and Warranty Terms which appear below apply to that binary-only portion of the Software which is proprietary to HP or over which HP intends to assert an ownership right and does not

apply to or override, expressly or by implication, the terms associated with the Bundled Products.

License

GRANT - HP grants you a license to use one copy of the Software. "Use" means storing, loading, installing, executing, or displaying the Software. You may not modify the Software or disable any licensing or control features of the Software. If the Software is licensed for "concurrent use," you may not allow more than the maximum number of authorized users to use the Software concurrently.

OWNERSHIP - The Software is owned and copyrighted by HP or its third-party suppliers. Your license confers no title to, or ownership in, the Software and is not a sale of any rights in the Software. HP's third-party suppliers may protect their rights in the event of any violation of these License Terms.

Copies

ADAPTATIONS - You may make copies or adaptations of the Software only for archival purposes or when

copying or adaptation is an essential step in the authorized Use of the Software. You must reproduce all copyright notices in the original Software on all copies or adaptations. You may not copy the Software onto any public network.

No Disassembly

DECRYPTION - You may not disassemble or decompile the Software unless HP's prior written consent is obtained. In some jurisdictions, HP's consent may not be required for limited disassembly or decompilation. Upon request, you will provide HP with reasonably detailed information regarding any disassembly or decompilation. You may not decrypt the Software unless decryption is a necessary part of the operation of the Software.

TRANSFER - Your license will automatically terminate upon any transfer of the Software. Upon transfer, you must deliver the Software, including any copies and related documentation, to the transferee. The transferee must accept these License Terms as a condition to the transfer.

TERMINATION - HP may terminate your license upon notice for failure to comply with any of these License Terms. Upon termination, you must immediately destroy the Software, together with all copies, adaptations, and merged portions in any form.

EXPORT REQUIREMENTS - You may not export or re-export the Software or any copy or adaptation in violation of any applicable laws or regulations.

Restricted Rights

RIGHTS - The Software and any accompanying documentation have been developed entirely at private expense. They are delivered and licensed as "commercial computer software" as defined in DFARS 252.227-7013 (Oct 1988), DFARS 252.211-7015 (May 1991), or DFARS 252.227-7014 (Jun 1995), as a "commercial item" as defined in FAR 2.101(a), or as "Restricted computer software" as defined in FAR 52.227-19 (Jun 1987) (or any equivalent agency regulation or contract clause), whichever is applicable. You have only those rights provided for such Software and any accompanying documentation by the applicable FAR or DFARS clause or the HP standard software agreement for the product involved.

Declaration of Conformity

According to ISO/IEC Guide 22 and EN 45014

Manufacturer's Name: Hewlett-Packard Company

Manufacturer's Address: 10500 Ridgeview Ct.
Cupertino, CA 95015-4010
USA

declares that the product

Product Name: HP Digital Media Receiver

Model Number(s): 5000 series

Product Options: All

conforms to the following Product Specifications:

Safety: IUL 1950

EMC: EN61000-3-2:1995+A14 - Harmonics
EN61000-3-3:1995 - Flicker
FCC Title 47 CFR, Part 15 Class B

Radio: FCC Title 47 CFR, Part 15, Subpart 2

Supplementary Information:

1. The Product was tested in a typical configuration with Hewlett-Packard Personal Computer and peripherals.
2. This Device complies with Part 15 of the FCC Rules. Operation is subject to the following two conditions: (1) this device may not cause harmful interference, and (2) this device must accept any interference received, including interference that may cause undesired operation.

Hardware Quality Engineering Manager
Cupertino, CA, USA October, 2002

For Regulatory Compliance Information ONLY,
contact:

Hardware Quality Engineering Manager
Hewlett-Packard, CPC
10500 Ridgeview Ct.
Cupertino, CA 95015-4010 USA
Phone: 408-343-5000

Operating Specifications

Electrical ratings:	Models: 5000 series 100-127 V/200-240 V, 4/2 A, 50/60 Hz
Operating temperature:	5° to 35° C
Storage temperature:	-40° to 70° C
Operating humidity:	15 to 80% @ 26° C
Storage humidity:	90% @ 65° C (non-condensing)
Operating altitude:	0-2286 m
Storage altitude:	0-4572 m

FCC Regulatory and Safety Information (USA only)

Federal Communications Commission (FCC) Radio Frequency Interference Statement

Warning: This equipment has been tested and found to comply with the limits for a Class B digital device, pursuant to Part 15 of the FCC Rules. These limits are designed to provide reasonable protection against harmful interference in a residential installation. This equipment generates, uses, and can radiate radio frequency energy and, if not installed and used in accordance with the instructions, may cause harmful interference to radio communications. However, there is no guarantee that interference will not occur in a particular installation. If this equipment does cause harmful interference to radio or television reception, which can be determined by turning the equipment off and on, the user is encouraged to correct the interference by one or more of the following measures:

- Reorient or relocate the receiving antenna.
- Increase the separation between the equipment and the receiver.

- Connect the equipment into an outlet that is on a circuit different from the receiver.
- Consult the dealer or an experienced radio/TV technician for help.

Hewlett-Packard's system RFI and Radiated Immunity tests were conducted with HP supported peripheral devices and HP shielded cables, such as those you receive with your system. Changes or modifications not expressly approved by Hewlett-Packard could void the user's authority to operate the equipment. To comply with the limits for an FCC Class B computing device, always use shielded signal cables and the power cord supplied with this unit.

Additional Safety Information

Warning: When using this device, basic safety precautions should always be followed to reduce the risk of fire, electric shock, and injury to persons, including the following:

- Do not use this product near water, for example, near a bathtub, wash bowl, kitchen sink or laundry tub, in a wet basement or near a swimming pool.
- Avoid using this product during and electrical storm. There may be a remote risk of electric shock from lightning.
- Do not plug a modem or telephone cable into the Network Interface Card (NIC) receptacle.
- Always unplug the system from its power source and from any telecommunications systems (such as phone lines), networks, or modems before performing any of the procedures described in this guide. Failure to do so may result in personal injury or equipment damage. Hazardous voltage levels are inside the power supply and modem of this product.

Copyrights and Trademarks

© Copyright 2002 Hewlett-Packard Company

All rights are reserved. No part of this document may be photocopied, reproduced, or translated to another language without the prior written consent of Hewlett-Packard Company.

The information contained in this document is subject to change without notice. Hewlett-Packard shall not be liable for errors contained herein or for consequential damages in connection with the furnishing, performance, or use of this material.

Adobe, Acrobat, and Reader are registered trademarks of Adobe Systems, Inc.

HP and the HP logo are property of Hewlett-Packard Company.

Microsoft and Windows are registered trademarks of Microsoft Corporation.

Other brands and their products are trademarks or registered trademarks of their respective holders.

