

Q3073-90178

### 1 Windows Users START HERE Windows 사용자 시작



This side of the poster is for **Windows** users. Make sure you are using the CD and side of the poster that matches your operating system.

포스터의 이 면은 **Windows** 사용자를 위한 것입니다. 운영 체제에 맞는 CD와 포스터의 면을 사용하고 있는 지 확인합니다.

### 2 Turn your computer on 컴퓨터 켜기

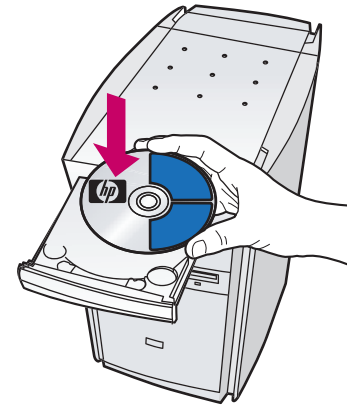
- Turn on your computer and wait for the Windows desktop to appear.
- Close any open programs.



- 컴퓨터를 켜고 Windows 바탕 화면이 나타날 때까지 기다리십시오.
- 모든 프로그램을 종료하십시오.

### 3 Begin software installation 소프트웨어 설치 시작

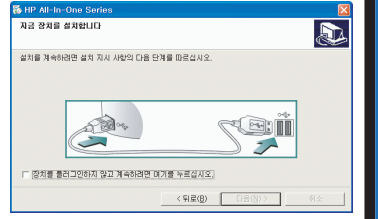
- Insert the HP PSC Windows CD.
- Follow the onscreen instructions.



If the software does not appear on your computer screen after inserting the CD, see the Troubleshooting Information chapter in the **Reference Guide**.

CD를 삽입한 후 컴퓨터에 아무것도 나타나지 않으면, **참조 설명서**의 "문제 해결 정보" 장을 참조하십시오.

- Do not connect the USB cable yet.** When you see the **Setup your Device Now** dialog box, continue to step 4.

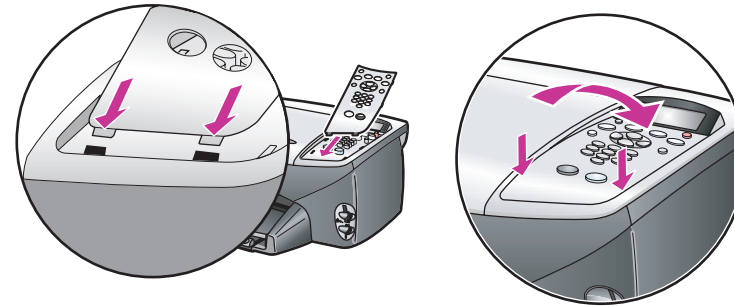


- 아직 USB 케이블을 연결하지 마십시오.** 지금 장치를 설치합니다 대화 상자가 나타나면 4 단계를 계속하십시오.

### 4 Attach front panel cover 전면 패널 덮개 부착하기

- Remove any packing material or tape.
- Insert the two bottom tabs of the cover into the slots on the unit.
- Tilt the cover down and press firmly. Make sure the tabs lock into place and the cover is even with the device.

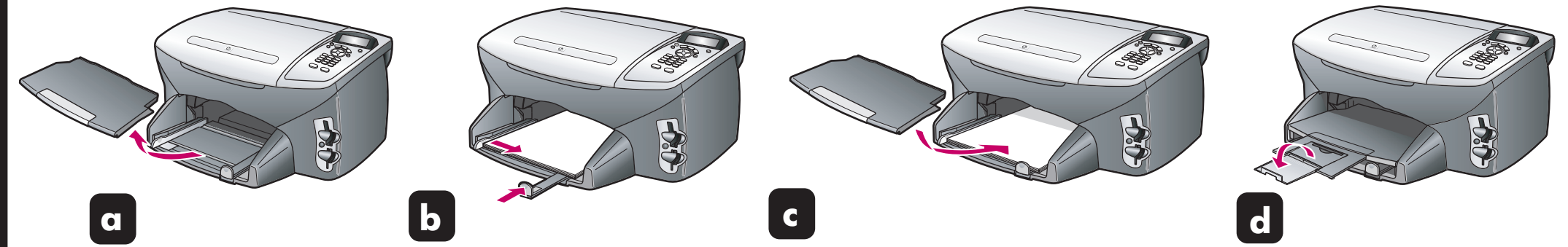
- 모든 포장재 또는 테이프를 제거합니다.
- 덮개의 하단 탭 두 개를 장치 슬롯에 끼워 넣습니다.
- 덮개를 아래로 기울여 단단하게 누릅니다. 탭이 제자리에 고정되고 덮개가 장치와 잘 맞춰졌는지 확인합니다.



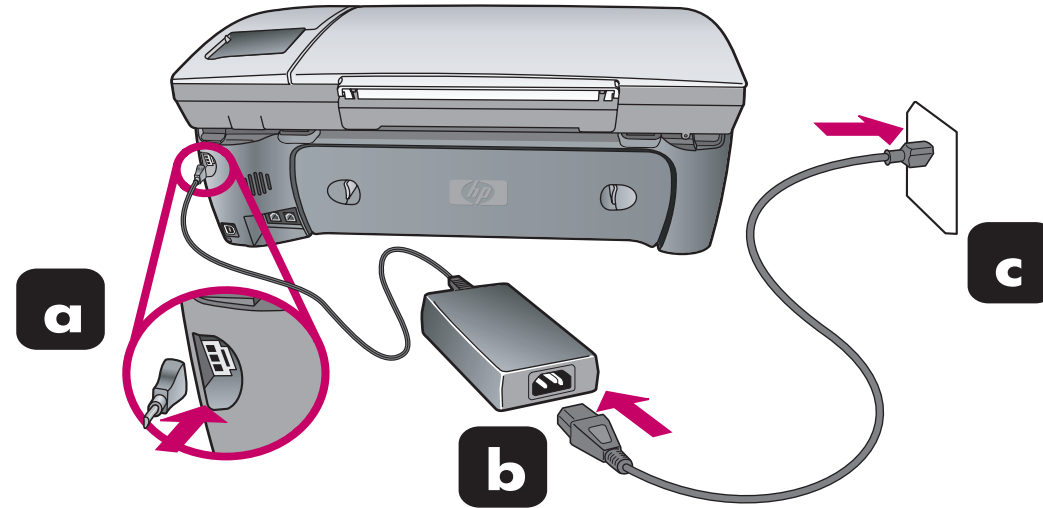
### 5 Load paper 용지 넣기

Use plain white paper to prepare for print alignment.

일반 용지를 사용하여 인쇄 정렬을 준비합니다.



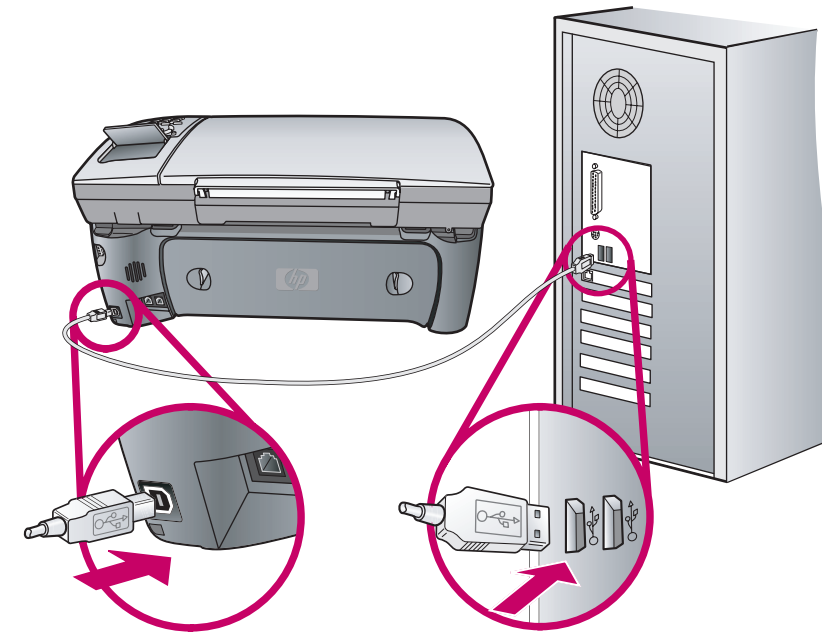
### 6 Connect power cords 전원 코드 연결



### 7 Connect USB cable USB 케이블 연결

Make sure that you see the screen in step 3 before plugging in your USB cable. Do not connect the USB cable to a keyboard.

USB 케이블을 연결하기 전에 3 단계의 화면이 나타났는지 확인합니다. USB 케이블을 키보드에 연결하지 마십시오.



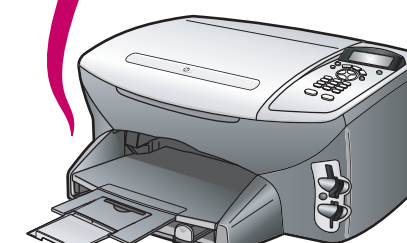
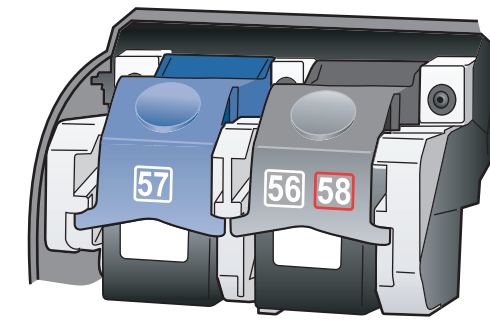
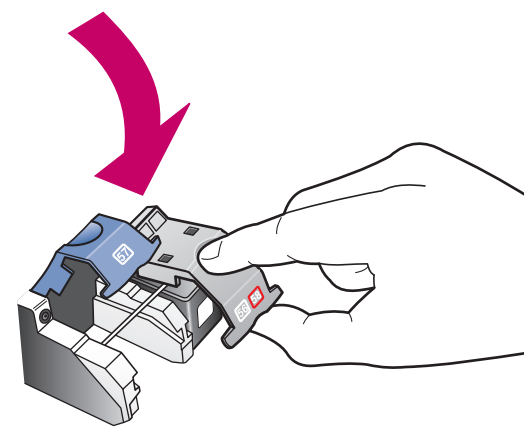
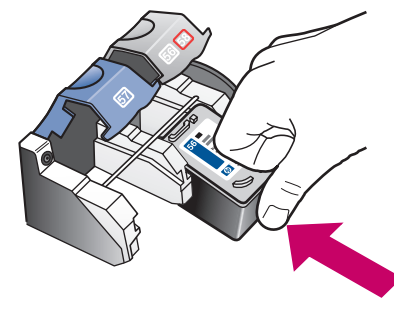
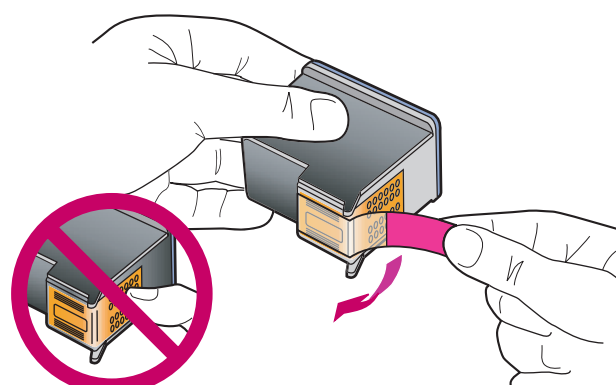
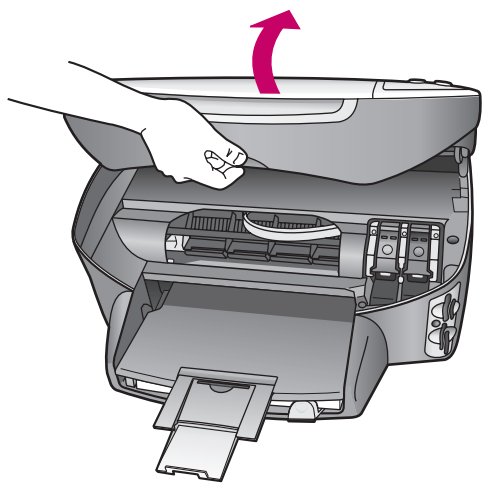
### 8 Turn HP device on and configure HP 장치 켜기 및 구성

- Use the arrow keys to scroll through the list. Enter the code for your language on the keypad, and then confirm your selection.
- Enter the code for your country/region, and then confirm your selection.

- 화살표 키를 사용하여 목록을 스크롤합니다. 키패드에서 언어 코드를 입력한 다음 선택을 확인합니다.
- 국가/지역 코드를 입력한 다음 선택을 확인합니다.

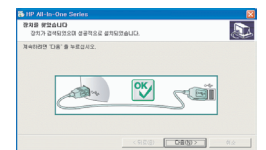


### 9 Insert and align print cartridges 잉크 카트리지를 삽입하고 정렬하기



- Make sure the power is on. Lift the print cartridge door up until it catches. Wait for the print carriage to move to the right. Lift the blue and gray latches.
  - Remove the bright pink tape from both print cartridges. Do not touch the gold-colored contacts or retape the cartridges.
  - Hold the black print cartridge with the HP label on top. Slide the cartridge into the right (gray latch) side of the print carriage.
  - Press down on the gray latch until it locks into place. Insert the color cartridge on the left side, and lock into place.
  - Make sure both latches are locked into position. Close the door.
  - Press **OK** on the front panel to begin alignment. After a page prints, alignment is complete.
- 전원이 켜져 있는지 확인합니다. 잉크 캐리지 덮개가 고정될 때까지 들어 올립니다. 잉크 캐리지가 오른쪽으로 이동할 때까지 기다립니다. 파란색과 회색 걸쇠를 들어 올립니다.
  - 두 잉크 카트리지에서 밝은 분홍색 테이프를 제거합니다. 이때 금색 점점을 만지거나 카트리지에 다시 붙이지 마십시오.
  - HP 레이블이 위를 향하도록 흑백 카트리지를 잡고 카트리지를 잉크 캐리지의 오른쪽(회색 걸쇠)으로 밀어 넣습니다.
  - 회색 걸쇠가 잠길 때까지 아래로 누릅니다. 컬러 잉크 카트리지를 왼쪽에 삽입한 다음 제자리에 잠기도록 합니다.
  - 양쪽 걸쇠가 제자리에 잠겨 있는지 확인하십시오. 덮개를 닫습니다.
  - 정렬을 시작하려면 전면 패널에서 **OK**를 누릅니다. 페이지가 인쇄되면 정렬이 완료됩니다. 이 페이지를 버리거나 재활용합니다.

### 10 Finish software installation 소프트웨어 설치 완료



- Hardware setup is complete. Return to your computer. On the dialog box with the green checkmark, click **Next**. Depending on your system, it may take 20 minutes or more to finish installing the software.
  - After you restart your computer, follow the onscreen instructions. When you see the **Congratulations!** dialog box, you are ready to use your HP PSC. If you encounter any problems during setup, see the Reference Guide.
- 하드웨어 설치가 완료되었습니다. 컴퓨터로 돌아가십시오. 녹색 체크 표시가 있는 대화 상자에서 **다음**을 누릅니다. 시스템에 따라 소프트웨어를 설치하는데 20분 이상이 소요될 수 있습니다.
  - 컴퓨터를 다시 시작한 다음 화면에 나타나는 지시 사항을 따르십시오. **축하합니다!** 대화 상자가 나타나면 HP PSC를 사용할 준비가 된 것입니다. 설치 중 문제가 발생하면 "참조 설명서"를 참조하십시오.



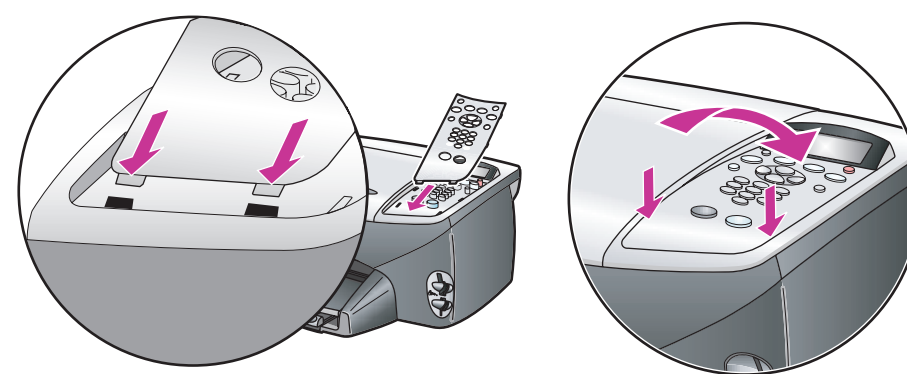
# 1 Macintosh Users START HERE



This side of the poster is for **Macintosh** users. Make sure you are using the CD and side of the poster that matches your operating system. Turn the poster over if you are installing software on a pc.

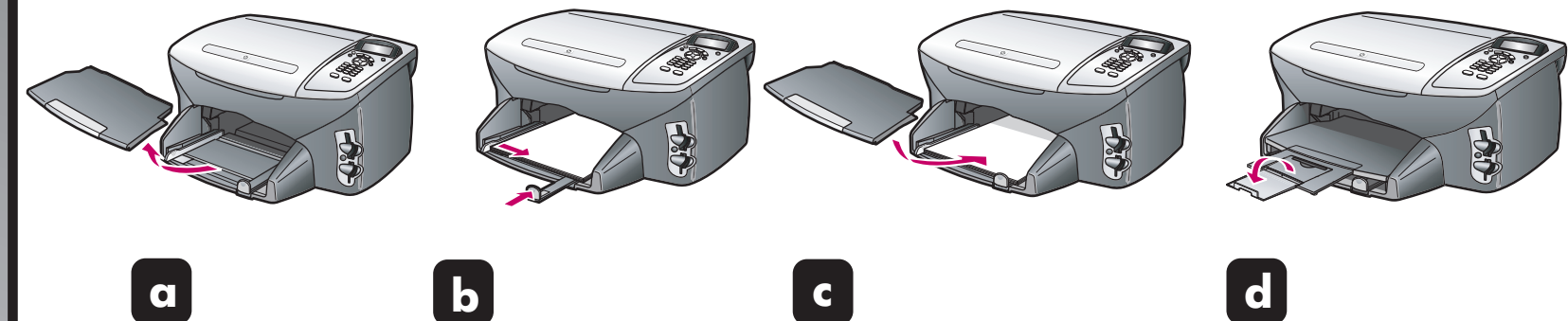
# 2 Attach front panel cover

- Remove any packaging material.
- Place the front panel cover over the buttons. Firmly press on the sides to snap the cover in place. Make sure all the buttons are visible.

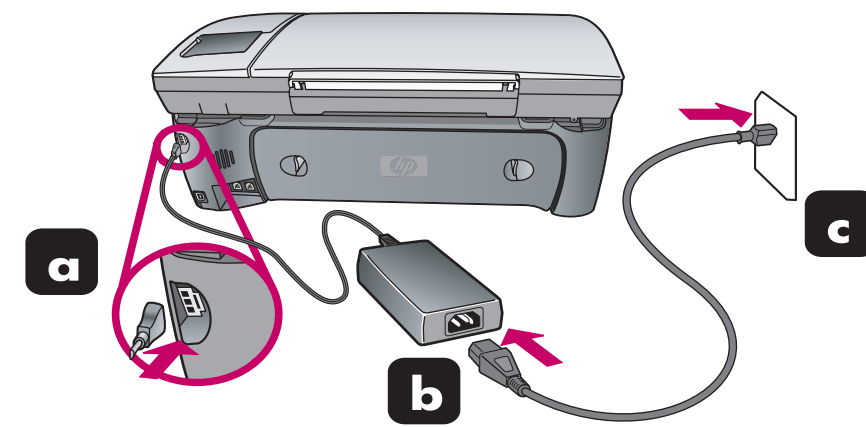


# 3 Load paper

Use blank white paper to prepare for print alignment.

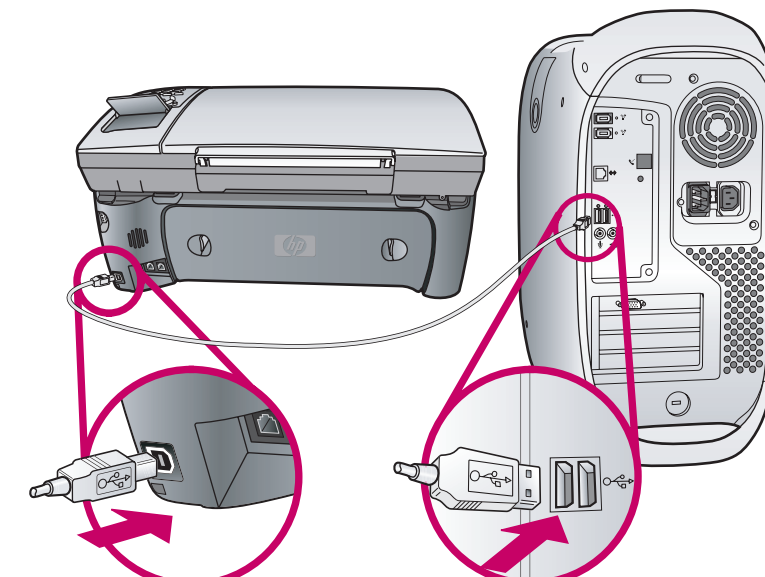


# 4 Connect power cords



# 5 Connect USB cable

Do not connect the USB cable to a keyboard.

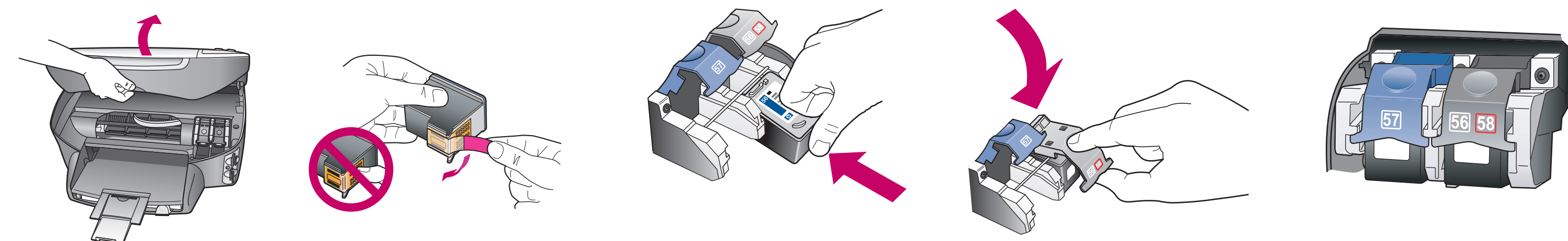


# 6 Turn HP device on and configure

- Use the arrow keys to scroll through the list. Enter the code for your language on the keypad, and then confirm your selection.
- Enter the code for your country/region, and then confirm your selection.



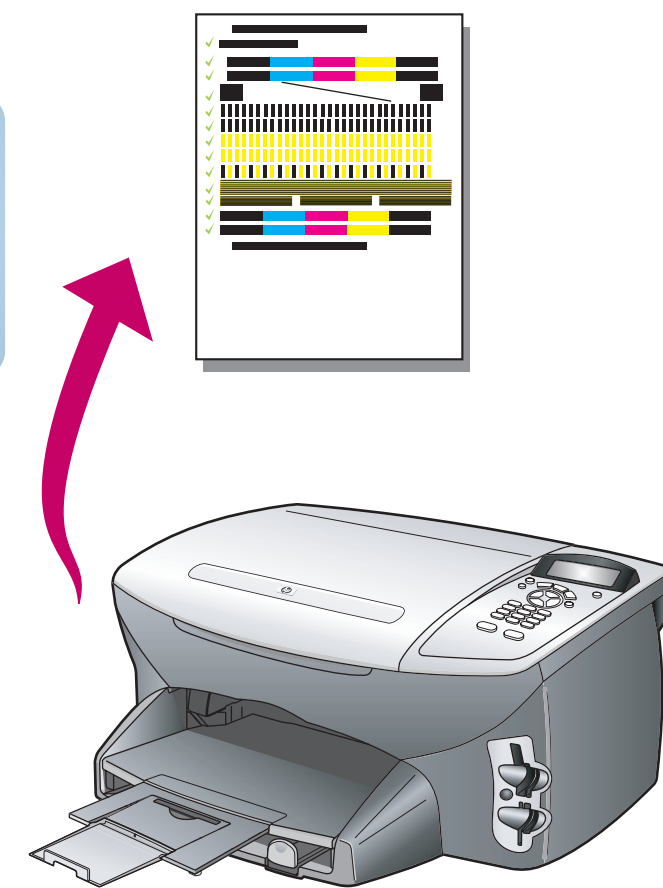
# 7 Insert print cartridges



- Lift the print carriage door until it catches. Wait for the print carriage to move to the right. Lift the blue and gray latches.
- Remove the bright pink tape from both print cartridges. Do not touch the gold-colored contacts or retape the cartridges.
- Hold the black print cartridge with the HP Logo on top. Slide the cartridge into the right (gray latch) side of the print carriage.
- Press down on the gray latch until it locks into place. Insert the color cartridge on the left side, and lock into place.
- Make sure both latches are locked into position. Close the door.

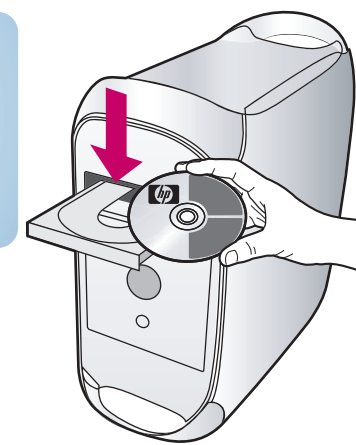
# 8 Align print cartridges

Press **OK** on the front panel to begin alignment. After a page prints, alignment is complete. Discard or recycle this page.



# 9 Install software

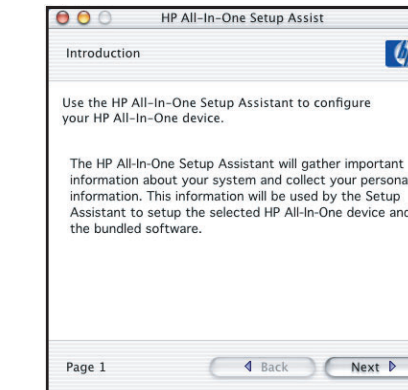
- Turn on your Macintosh and wait for it to finish starting up. Insert the HP PSC Macintosh CD.



- Double-click the **HP All-In-One Installer** icon on your desktop.



- Follow the onscreen instruction. Make sure you complete the Setup Assistant.



# 10 Congratulations!

You are ready to begin using your HP device. See the **Reference Guide** to get started.

