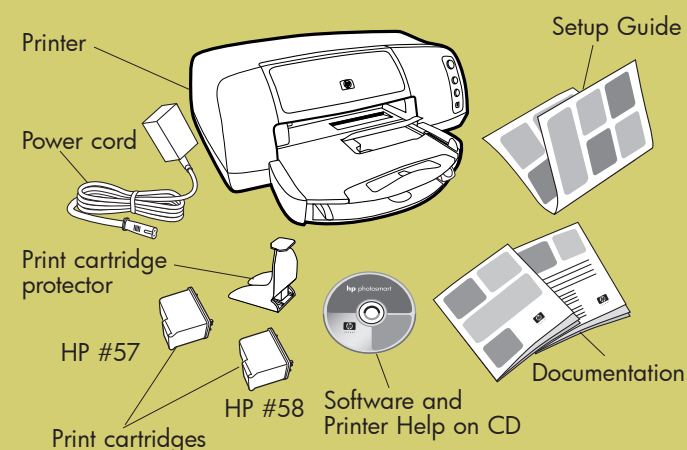


setup guide

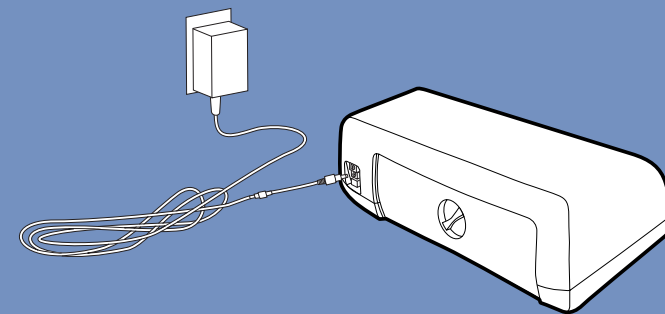
hp photosmart 7150



1 unpack your hp printer

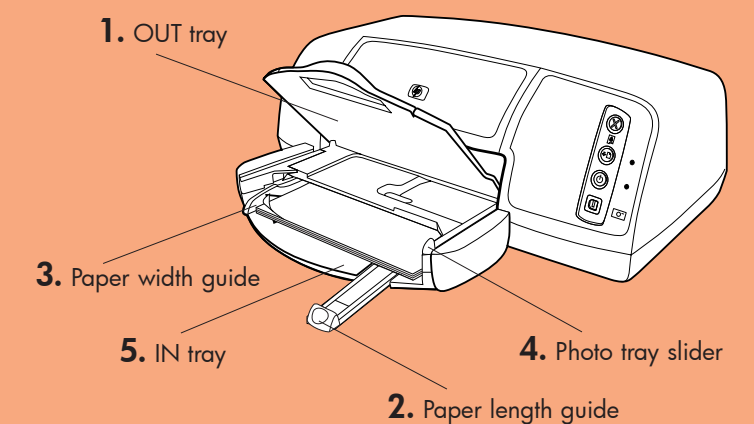


2 plug in the power cord



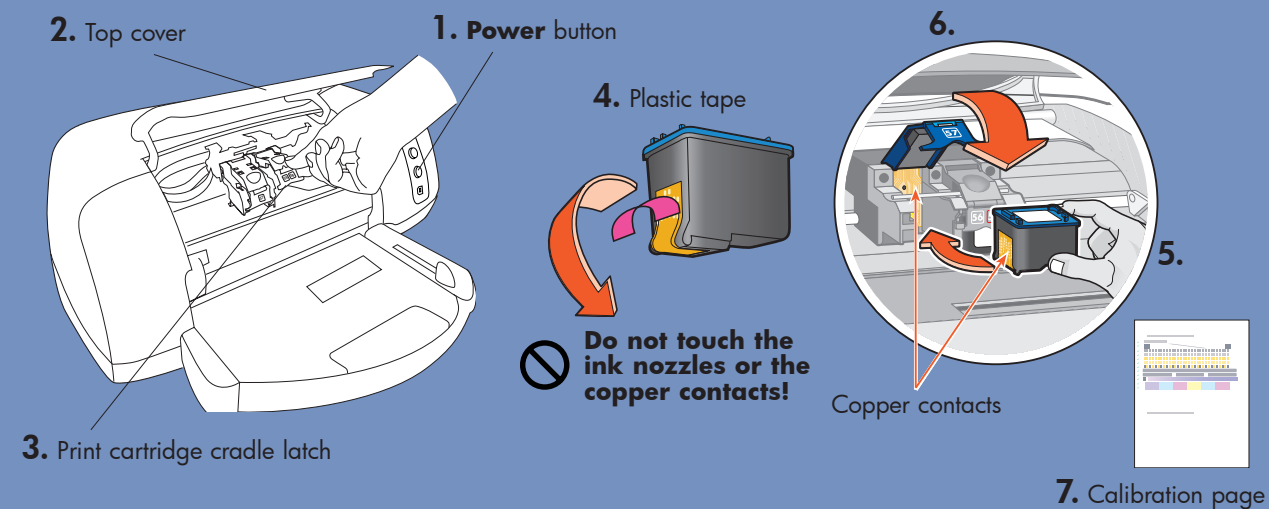
3 load plain paper in the IN tray

1. Lift the OUT tray.
2. Pull out the paper length guide on the IN tray.
3. Slide the paper width guide as far to the left as it will go.
4. Move the photo tray slider toward you until it stops. This disengages the photo tray.
5. Place a stack of plain paper into the IN tray.
6. Adjust the paper width guide and paper length guide to fit close to the edges of the paper without bending the paper.
7. Lower the OUT tray.



4 install the print cartridges

1. Press the **Power** button to turn the printer on.
2. Open the top cover. The print cartridge cradle moves to the center of the printer.
3. Pull out the bottom of the print cartridge cradle latches to open them.
4. Remove the plastic tape from each print cartridge.
5. Insert the **HP #57 tri-color** print cartridge in the left stall. Insert the **HP #58 photo** print cartridge in the right stall.
6. Close both print cartridge cradle latches by pulling the bottom of the latch out, pressing down, then releasing the latch.
7. Close the top cover. Wait while the printer performs internal diagnostics. After two minutes, a calibration page prints automatically. This verifies that the print cartridges are installed correctly.



install a black print cartridge

Be sure to purchase an HP #56 black print cartridge separately.

- To print text documents faster and better, replace the photo print cartridge in the right stall with an HP #56 black print cartridge.
- To go back to printing beautiful photos, remove the black print cartridge and reinstall the HP #58 photo print cartridge in the right stall.

Store the unused print cartridge in the protector that came with your printer.



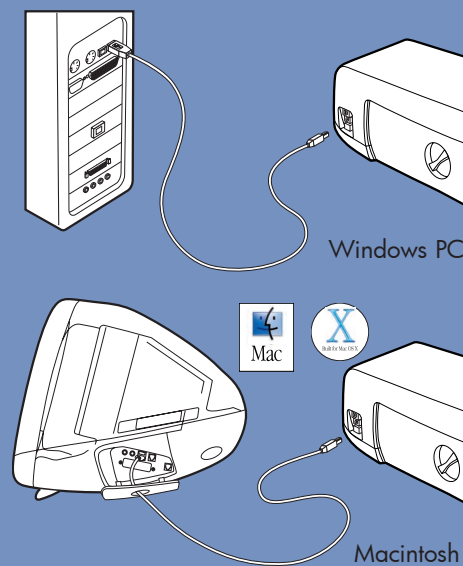
5 connect the printer to your computer

Your computer may be turned on or off during this procedure.

1. Purchase a USB-compliant interface cable separately. The cable must be less than 15 feet (5 meters) long.
2. Plug one end of the USB cable into your computer's USB port.
3. Plug the other end of the USB cable into the USB port on the **back** of your printer.

Note: Do **not** plug the USB cable into the camera port on the front of your printer. That port is for your HP direct-printing digital camera.

4. If you are using a Windows PC and your computer is on, the New Hardware Wizard appears on your computer screen when you connect the printer. Continue with step 6 to install the printer software.



printer lights

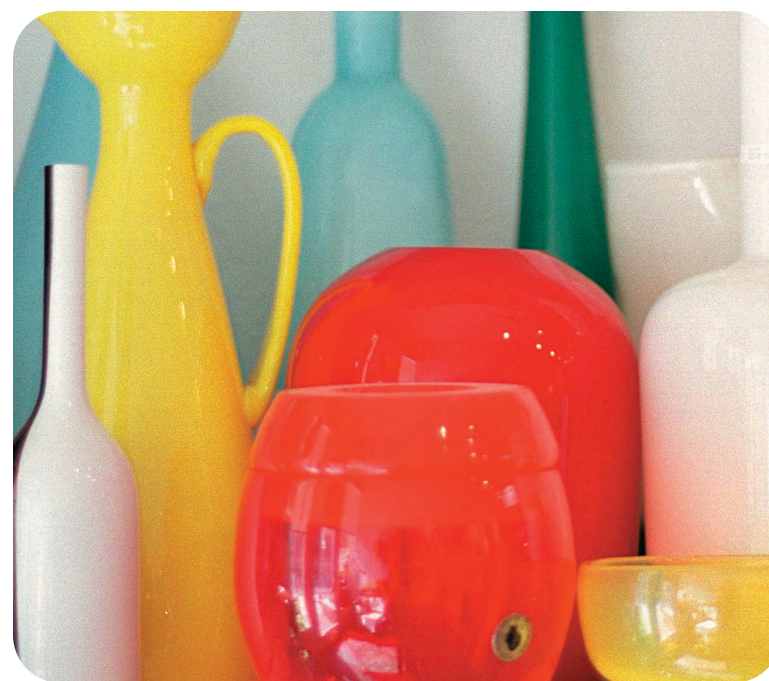
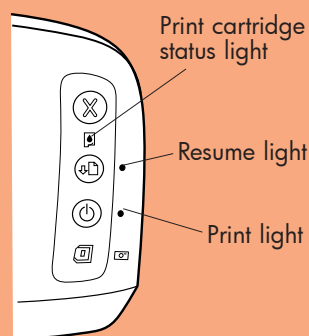
Print cartridge status light — When this light is on or flashing, check the print cartridges.

Resume light — When this light is on or flashing, the printer is out of paper or has a paper jam.

Print light — When this light is on, the power is on.

When this light flashes green, the printer is busy.

When all three lights are flashing, turn off the printer and unplug the power cord. Wait one minute, then plug the power cord back in and turn the printer on.



getting assistance



- *HP Photosmart 7150 Basics Guide*
- *HP Photosmart Software Setup & Product Support* booklet
- HP Photosmart 7150 Printer Help
- www.hp.com/go/support
- 208.323.2551 (U.S.)

Printed in USA 05/02 • Printed on recycled paper
© 2002 Hewlett-Packard Company
Windows is a registered trademark of Microsoft Corporation
Macintosh is a registered trademark of Apple Computer, Inc.

fun features

The HP Photosmart 7150 Printer Help tells you how to:

- Print photos directly from your digital camera without using your computer
- Use the included software to improve the quality of your photos
- Print high-quality photos using 4 x 6 inch (10 x 15 cm) photo paper in the photo tray
- Print photo album pages, transparencies, and other documents from your computer

6 install the hp photosmart printer software

Important: Disable virus-checking software before you install the printer software. Be sure the printer is connected directly to your computer. Installing the printer software when the printer is connected to the computer through a USB hub or switchbox can cause errors and prevent a successful installation.

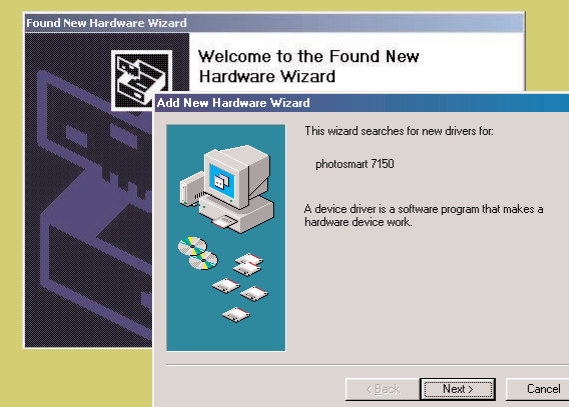
Note: Do not cancel the software installation, as this will uninstall the driver.

For more detailed instructions or troubleshooting information, see the *HP Photosmart Software Setup & Product Support* booklet.

Windows PC

1. Be sure you have completed steps 1 through 5. If your computer is off, turn it on.

The New Hardware Wizard appears on your computer screen.



2. Insert the HP Photosmart CD into your computer's CD-ROM drive. In the New Hardware Wizard, click **Next** to continue.

Note: If the New Hardware Wizard does not appear, use Windows Explorer or My Computer to locate your CD-ROM drive, then double-click the file **setup.exe**. The HP Photosmart printer dialog box appears. Click **Install hp photosmart printers software**.

3. Continue through the Wizard screens, clicking **Next**, **Accept**, or **Finish**, as appropriate, to install the printer software. If you are not sure which choices to select, use the defaults.

Note: To remove the software, finish the installation and then use Add/Remove Programs.

what is installed

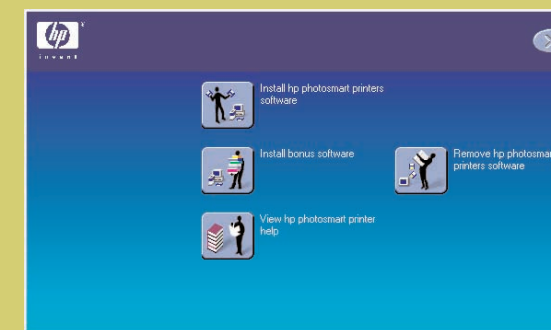
- HP Photosmart Printer Software
- HP Photo & Imaging Software

At the end of the installation, the computer restarts. A welcome window appears. Click where it says **Click here to print a test page**.



if your printer is not connected

If you insert the CD before connecting the printer to the computer, the following dialog box appears. Click **Install hp photosmart printers software**. Follow the onscreen instructions to complete the setup.



Macintosh

1. Be sure you have completed steps 1 through 5. If your computer is off, turn it on.
2. Insert the HP Photosmart CD into your computer's CD-ROM drive. Double-click the **HP Photosmart CD** icon.
3. Double-click the **HP Photosmart installer** icon, then follow the onscreen instructions to install the printer software.
4. If you are using OS X, this concludes the installation. If you are using OS 9.x, restart your computer.
5. If you are using OS X, the Print Center launches automatically. In the Print Center pull-down menu, choose the USB option, then select your printer. Click **Add** to finish adding your printer.

