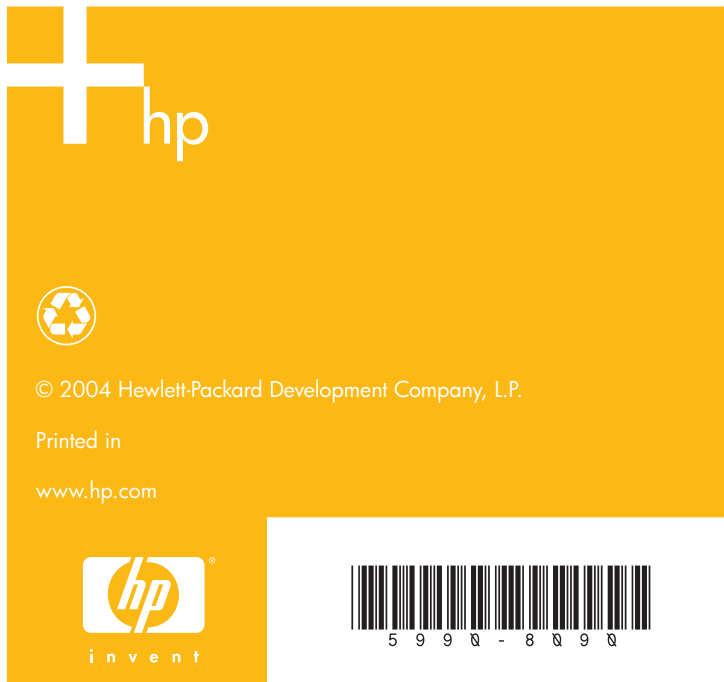


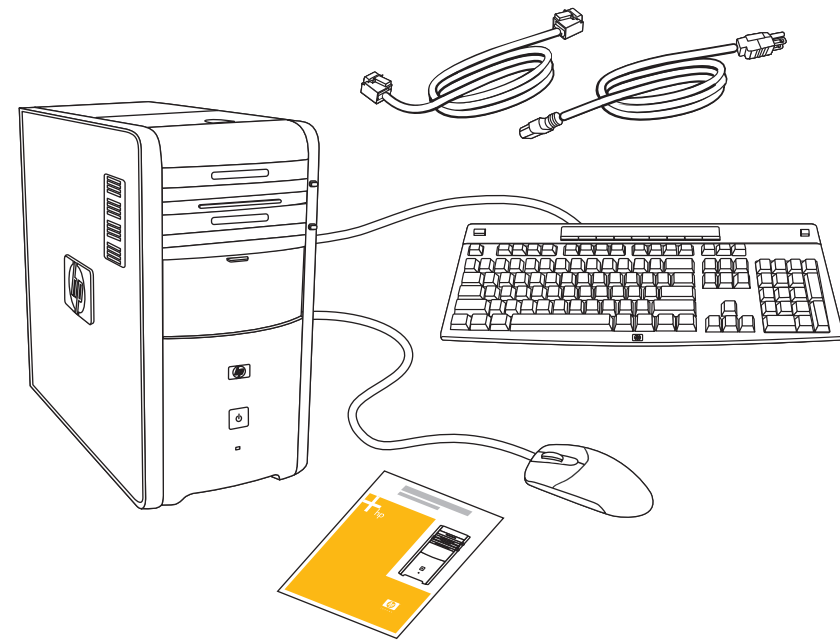
HP Pavilion home PC



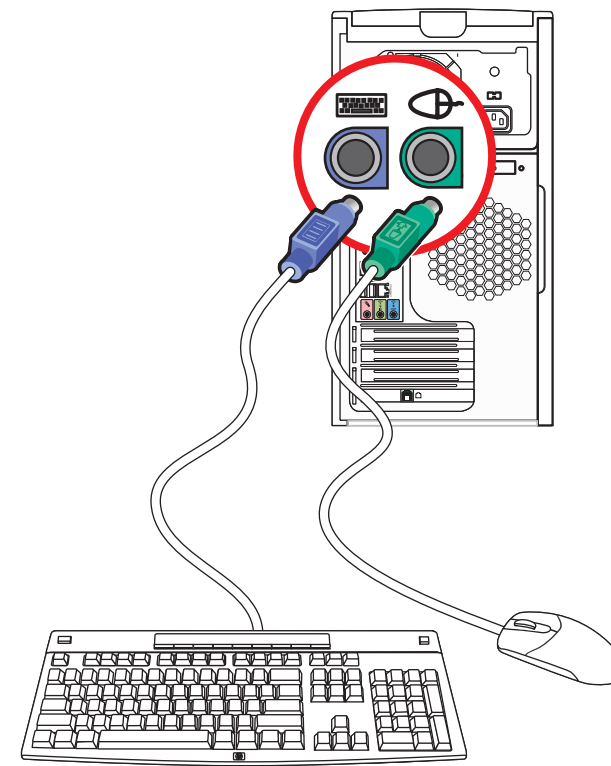
hp

© 2004 Hewlett-Packard Development Company, L.P.
Printed in
www.hp.com

5 9 9 9 - 8 8 9 9

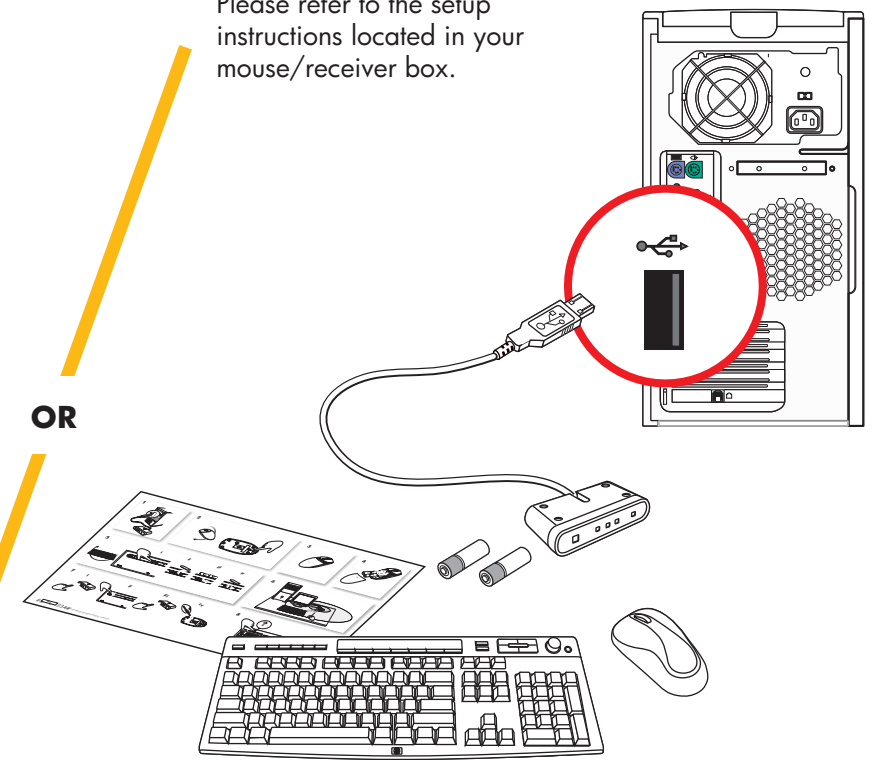


1 Keyboard and Mouse



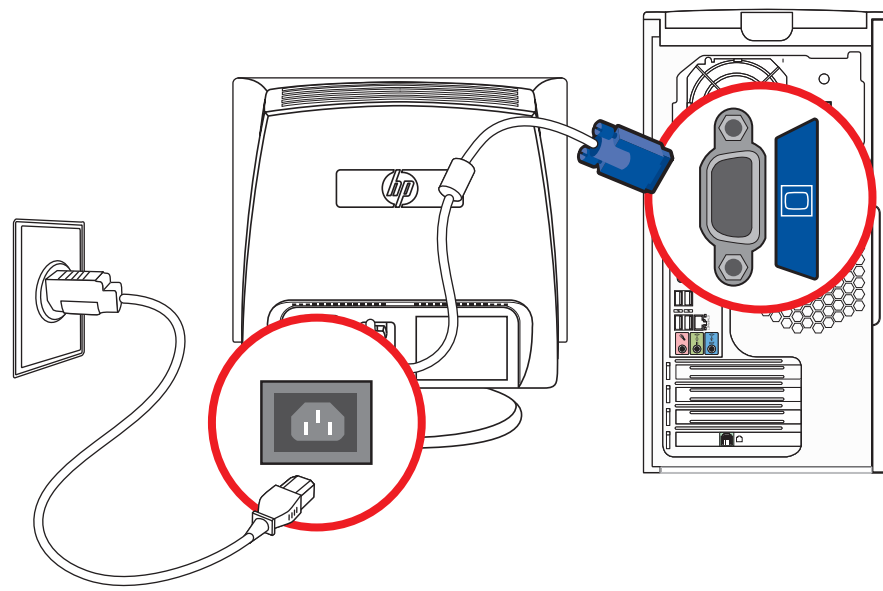
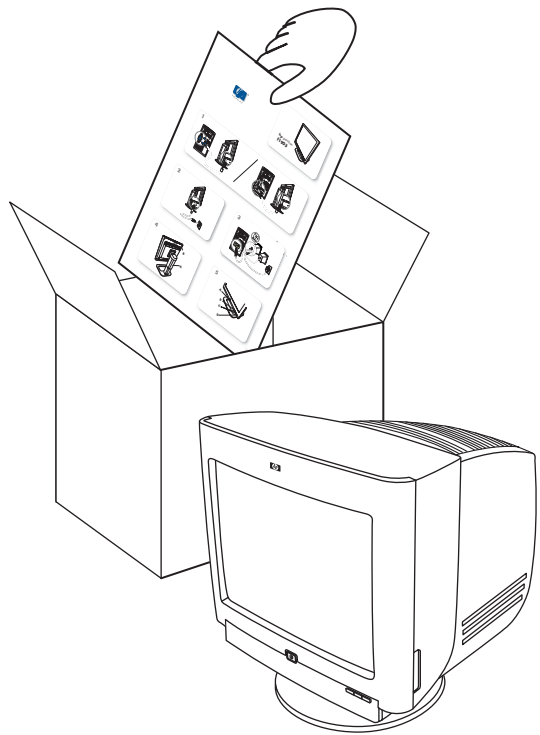
Wireless option

Please refer to the setup instructions located in your mouse/receiver box.



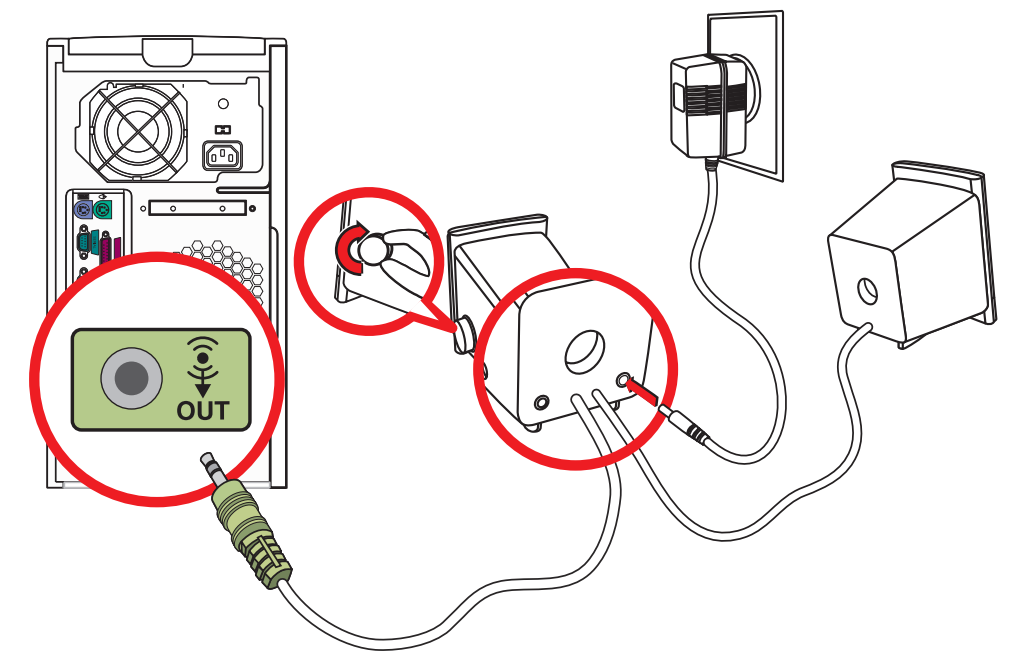
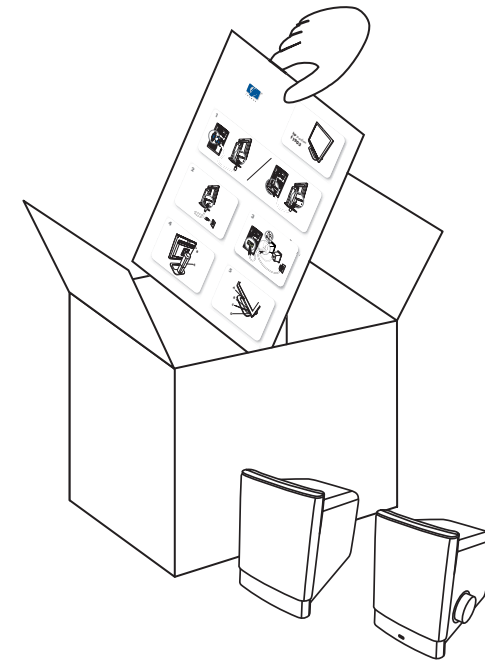
2 Monitor

Refer to setup instructions that came with your monitor.

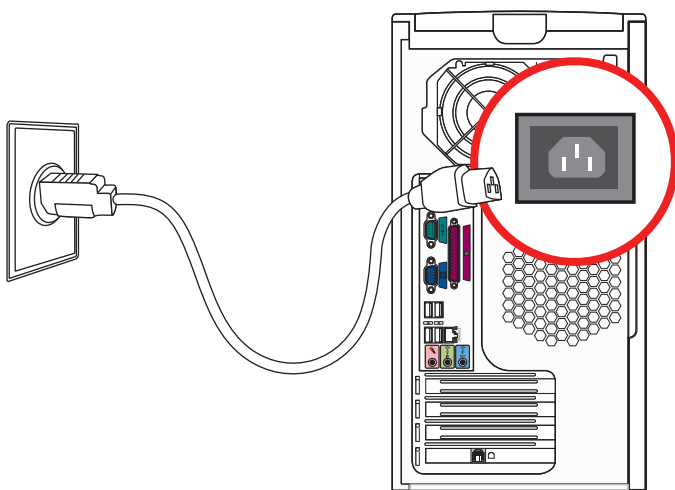


3 Speakers

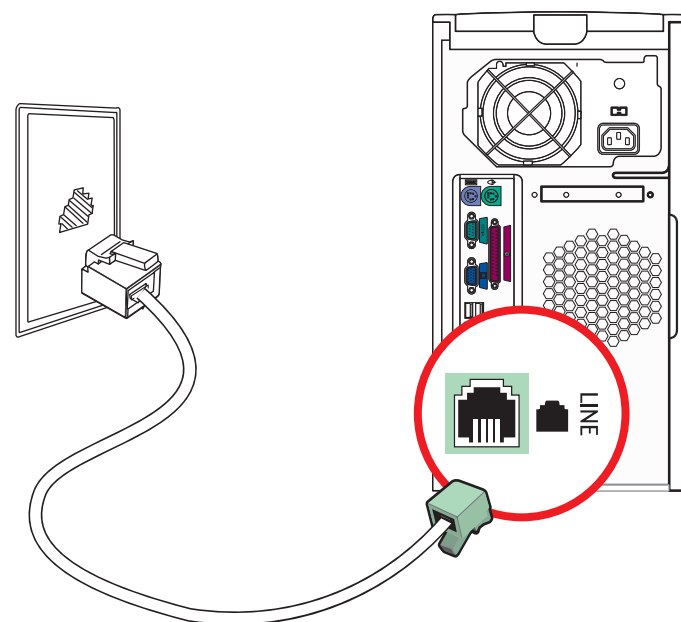
Refer to setup instructions that came with your speakers.



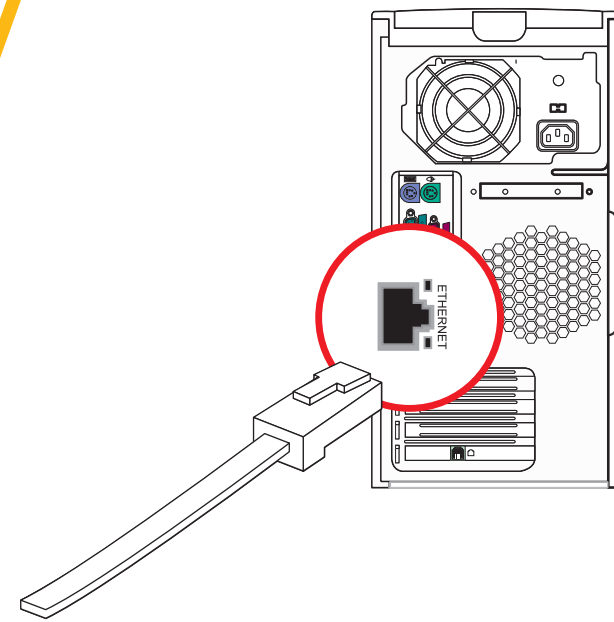
4 Power Connection



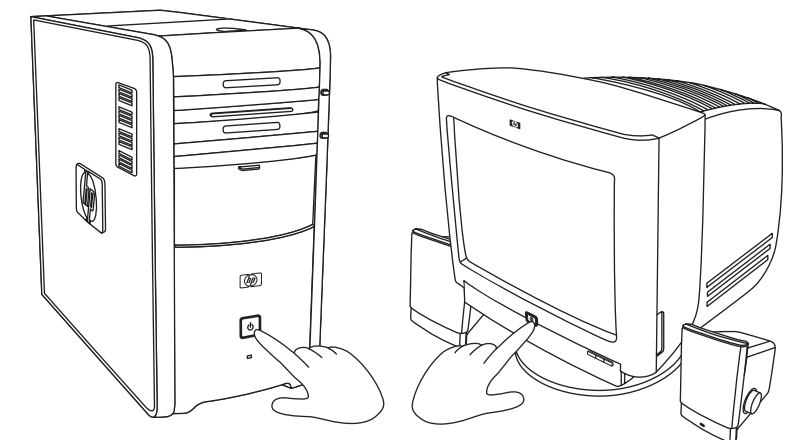
5 Modem / LAN



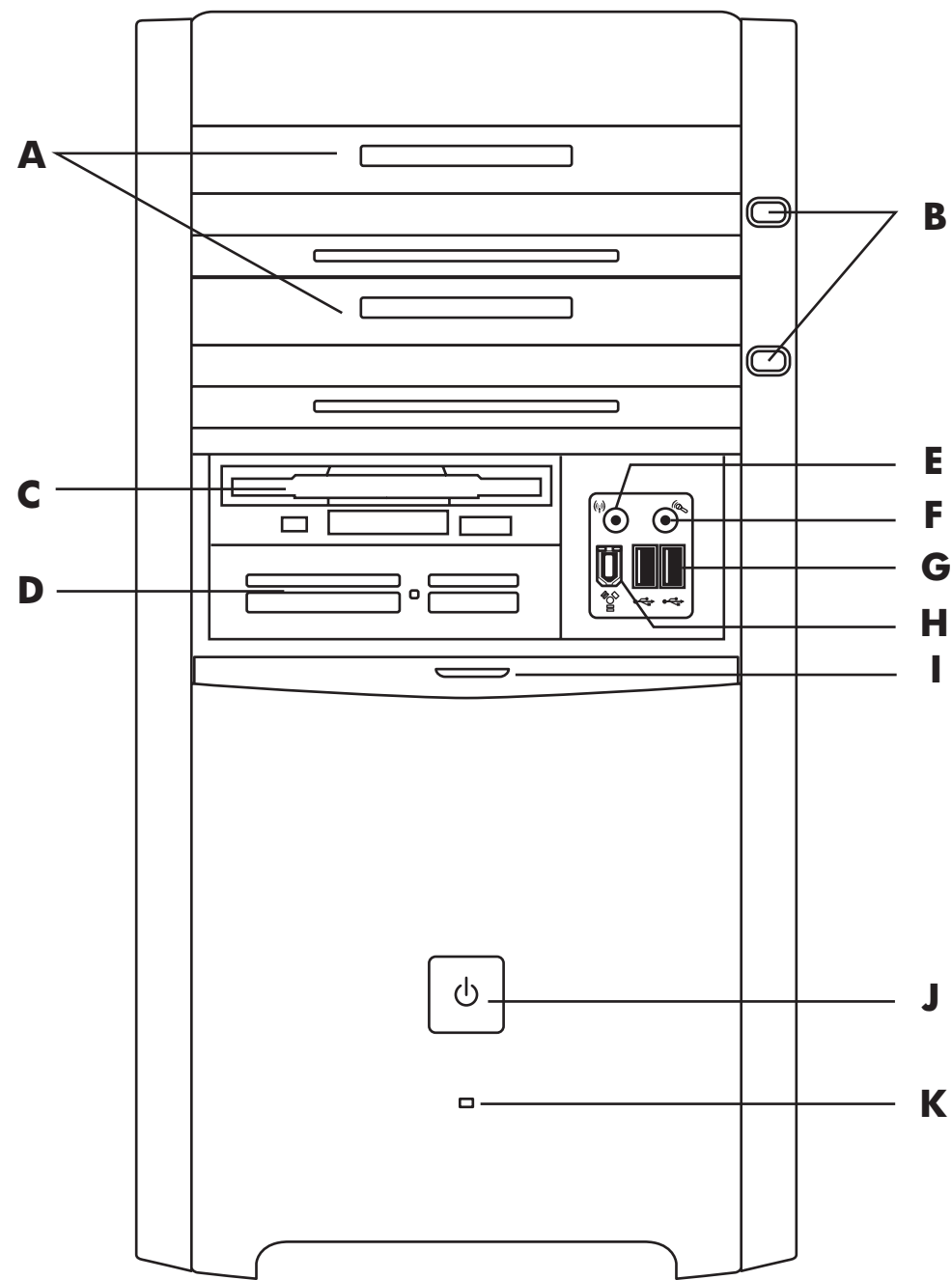
OR



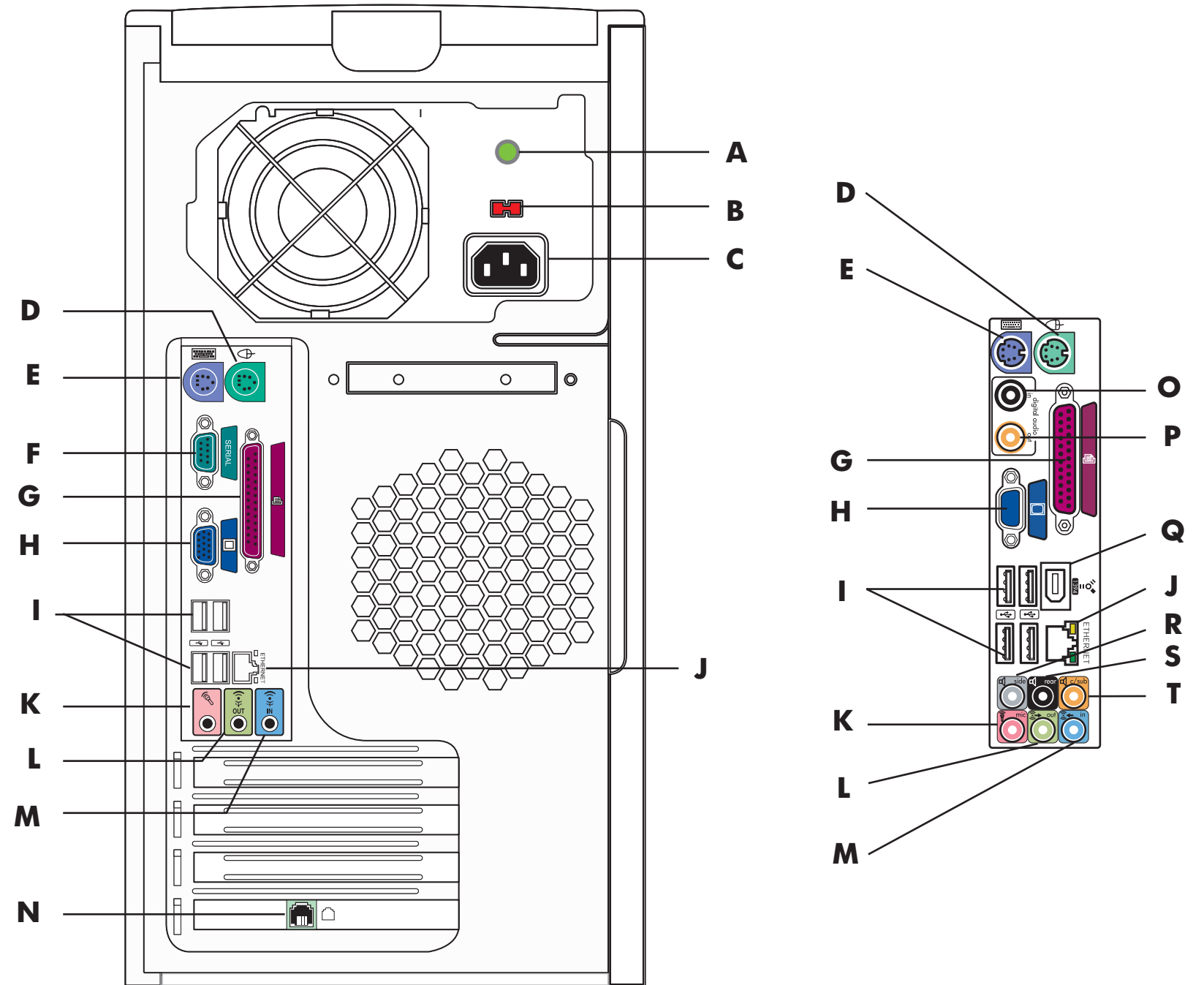
6 Power On



NOTE: Your components and connection locations may vary by model.



- A** — Optical drives
- B** — Optical drive Eject buttons
- C** — Floppy drive
- D** — Card reader
- E** — Headphones
- F** — Microphone
- G** — USB 2.0 ports
- H** — FireWire® (IEEE 1394) port
- I** — Door
- J** — On button with Indicator
- K** — Hard drive Activity light



- A** — Power LED
- B** — Voltage selector
- C** — Power Cord connector
- D** — PS/2 Mouse connector
- E** — PS/2 Keyboard connector
- F** — Serial port
- G** — Parallel port
- H** — VGA Monitor port
- I** — 4 USB 2.0 ports
- J** — LAN (Ethernet)
- K** — Microphone connector
- L** — Audio Line Out
- M** — Audio Line In
- N** — Modem (Line In RJ-11)

Select models only:

- O** — Digital Audio In
- P** — Digital Audio Out
- Q** — FireWire® (IEEE 1394) port
- R** — Side speaker port
- S** — Rear speaker port
- T** — Center speaker/subwoofer port