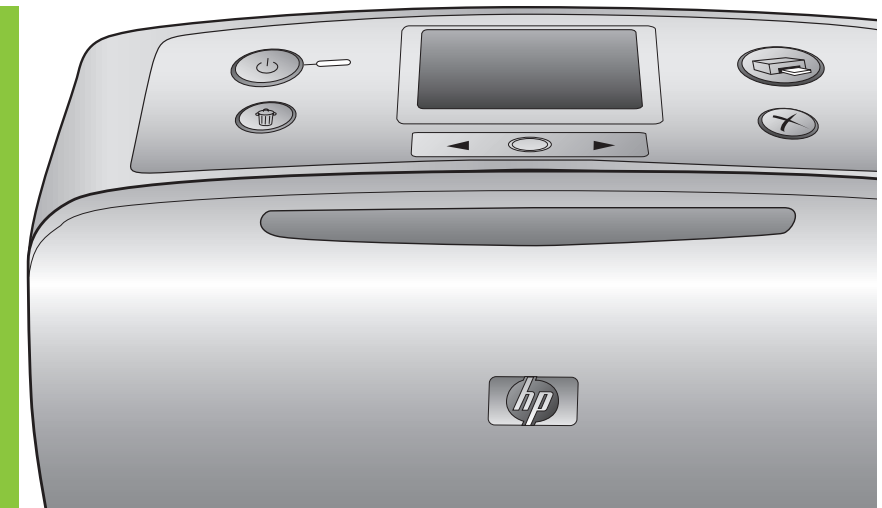


Setup Guide

HP Photosmart 320 series



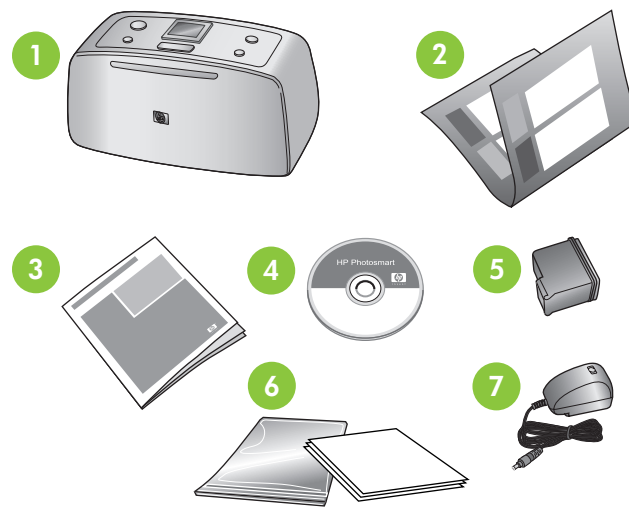
1 Unpack the printer

Remove the tape from inside and around the printer.

The printer box contains the following items:

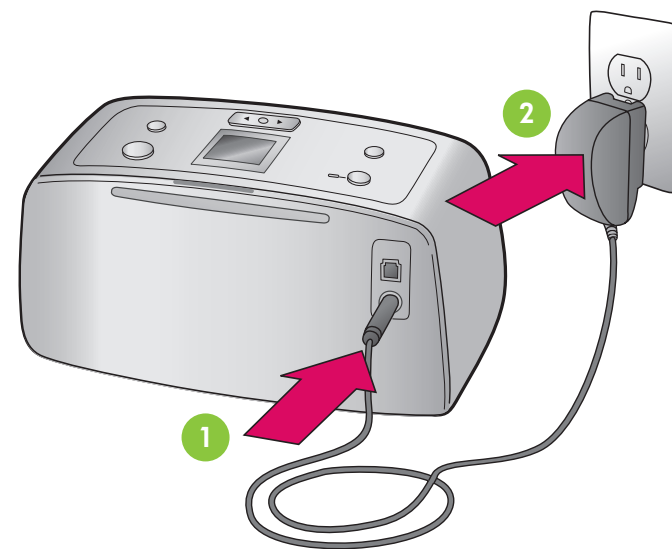
1. HP Photosmart 320 series printer
2. Setup Guide (this poster)
3. User's Guide
4. HP Photosmart software on CD
5. Tri-color print cartridge
6. Sample media pack and resealable media bag
7. Power supply (power supplies may vary in appearance or have an additional power cord)

Note: Some contents may vary by country/region.



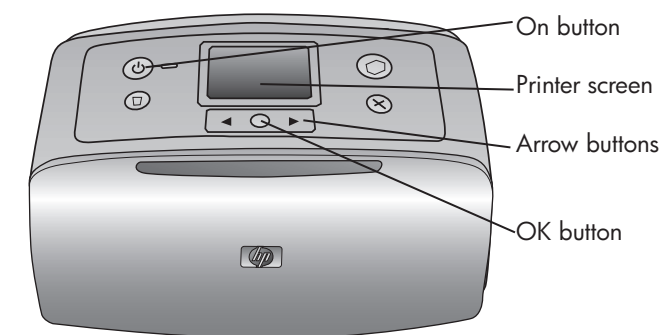
2 Plug in the power cord

1. Connect the power cord to the back of the printer.
2. Plug the power cord into a working electrical outlet.



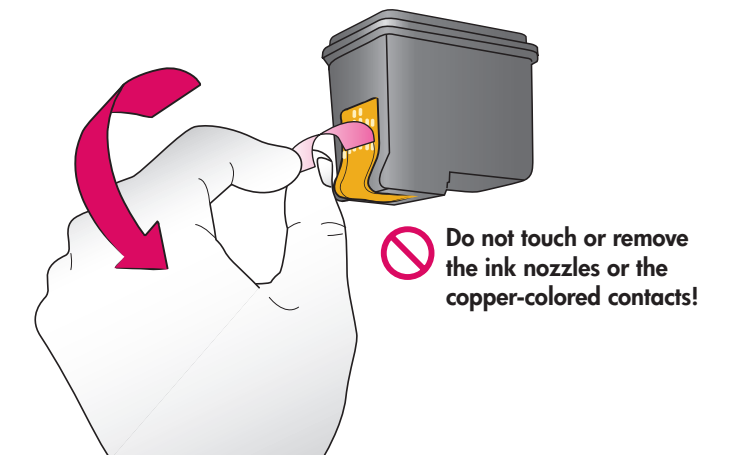
3 Turn on the printer

1. Press **On** to turn on the printer.
2. When **Select language** appears on the printer screen, press ◀ or ▶ to highlight your language.
3. Press **OK** to select your language and continue.
4. When **Set LCD language to (your language)** appears on the printer screen, press ◀ or ▶ to highlight **Yes**.
5. Press **OK** to select **Yes** and continue.
6. When **Select country/region** appears on the printer screen, press ◀ or ▶ to highlight your country/region.
7. Press **OK** to select your country/region.



4 Remove the tape on the print cartridge

1. Open the print cartridge package.
2. Pull the **pink pull-tab** to remove the clear tape from the print cartridge.



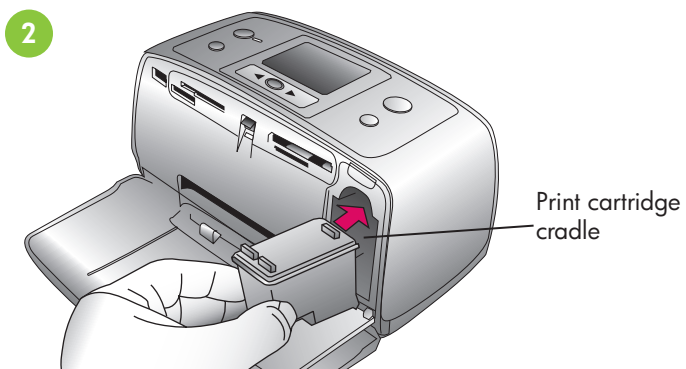
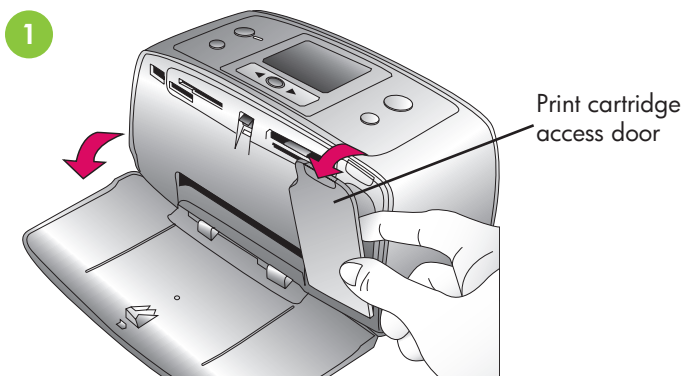
Do not touch or remove the ink nozzles or the copper-colored contacts!





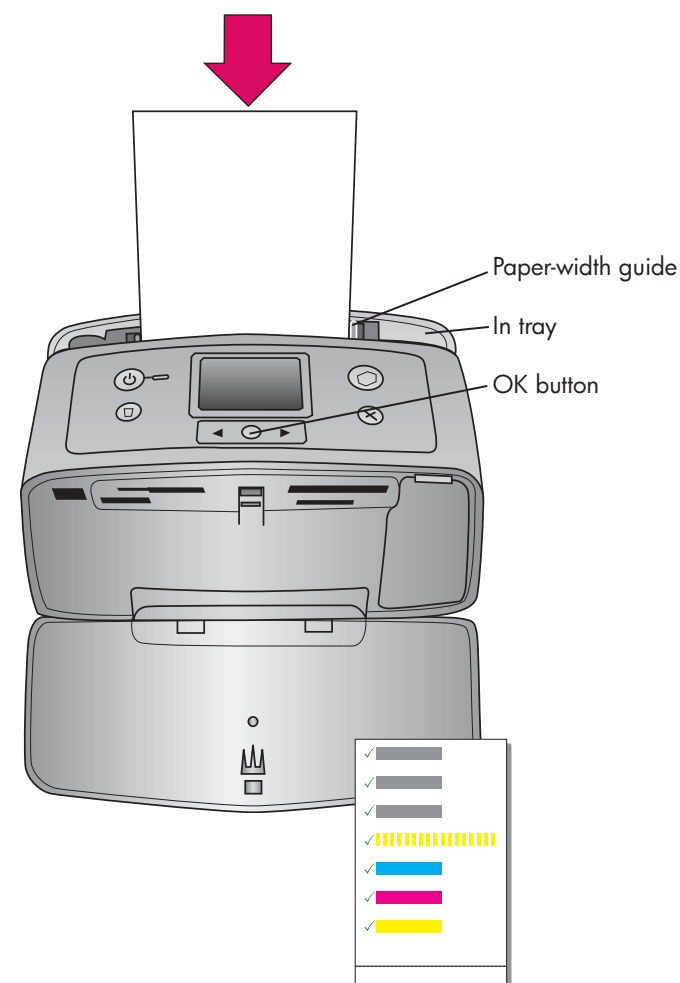
5 Install the print cartridge

1. Open the Out tray, then open the print cartridge access door.
2. Insert the Tri-color print cartridge into the print cartridge cradle with the label on top, the copper-colored contacts facing toward the inside of the printer, and the ink nozzles facing down.
3. Push the print cartridge into the cradle until it snaps into place.
4. Close the print cartridge access door.



6 Print an alignment page

1. Open the In tray as far as it will go.
2. Load an index card from the sample pack.
3. Adjust the paper-width guide to fit close to the edges of the index card without bending the card.
4. Press **OK**. An alignment page prints on the index card. Printing an alignment page ensures high print quality.
5. Discard the page.

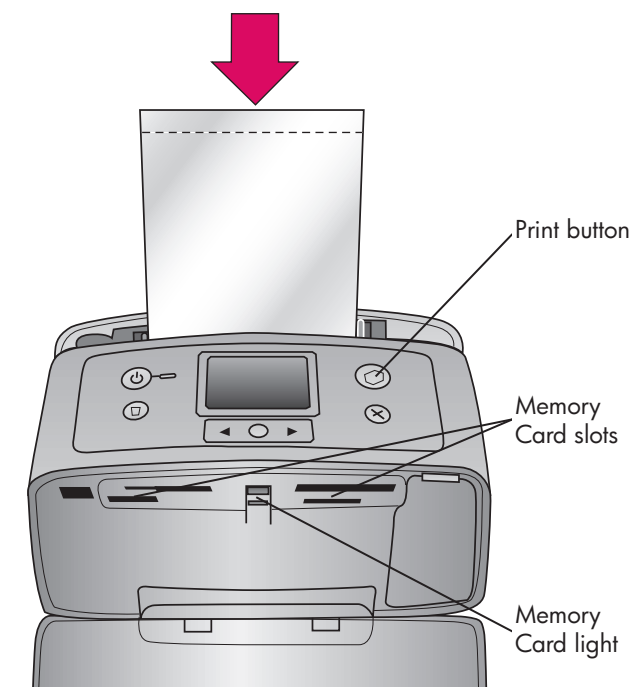


7 Print your first photo

1. Place a few sheets of photo paper in the In tray with the glossy side facing toward you. If you are using tabbed paper, insert it so the tabbed end feeds in last.
2. Adjust the paper-width guide to fit close to the edges of the paper without bending the paper.
3. Insert a memory card into the correct Memory Card slot.

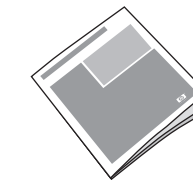
Note: The memory card will not insert all the way into the printer. When the memory card is inserted correctly, the Memory Card light flashes and then remains solid green.

4. Press **OK** to select 1 photo per page, then press **◀** or **▶** to view the photos.
5. Press **OK** to select a photo, then press **Print** to print your first photo.



Need more information?

For more information, see the following:



HP Photosmart 320 series User's Guide



Onscreen HP Photosmart Printer Help



www.hp.com/support



Printed in USA 06/04 v1.0.0 • Printed on recycled paper
© 2004 Hewlett-Packard Development Company, L.P.

