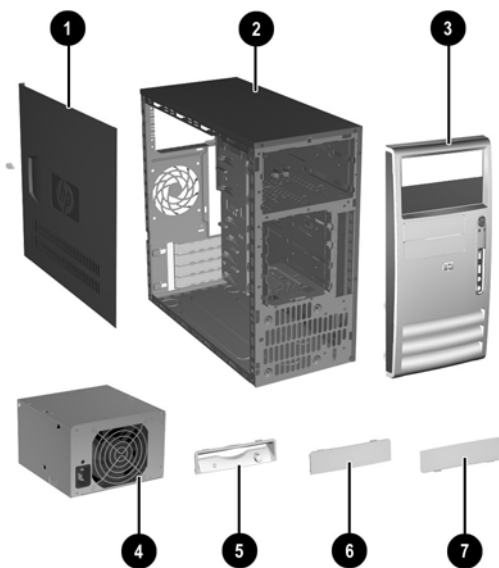


HP Compaq Business Desktop dx6100 Series Personal Computer

Illustrated Parts Map
Microtower



System Unit		
1	Access panel	376298-001
2	Chassis	not spared
3	Front Bezel with 5.25" ODD bezel blank and lower 3.5" bezel blank, painted	368085-001
4#	Power supply, PFC, 340 W (limited use)	349987-001
4	Power supply, PFC, 300 W	366505-001
5	Diskette drive bezel, painted	372448-001
6	3.5" bezel blank, top bay, painted	335938-005
7	3.5" bezel blank, lower(spared with 368085-001)	see 3, above

#340W power supplies have an external voltage selection switch and were used with early production models.

Mass Storage Devices (not illustrated)

40 GB\7200 RPM SATA hard drive	365555-001
80 GB\7200 RPM SATA hard drive	345713-005
120 GB\7200 RPM SATA hard drive	365556-001
160 GB\7200 RPM SATA hard drive	345712-005
Diskette drive with mounting screws	333505-005
48X CD-ROM drive with mounting screws	326773-005
52X CD-ROM drive	333969-005
48X/32X/48X CD-RW	346788-005
48X/32X/48X +16X DVD/CD-RW	359493-005
8X DVD+R/RW	358688-005
16/40X DVD ROM Drive	325313-005
Zip 250 drive without mounting bracket	326772-005

© 2004 Hewlett-Packard Development Company, L.P.

HP and the HP logo are trademarks of Hewlett-Packard Development Company, L.P.

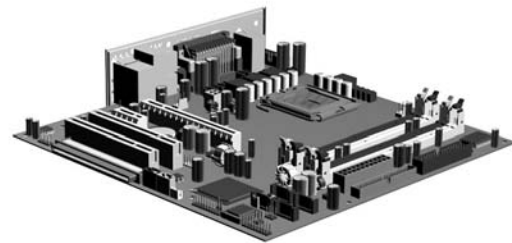
All other product names mentioned herein may be trademarks of their respective companies.

HP shall not be liable for technical or editorial errors or omissions contained herein. The information in this document is provided "as is" without warranty of any kind and is subject to change without notice. The warranties for HP products are set forth in the express limited warranty statements accompanying such products. **Nothing herein should be construed as constituting an additional warranty.**

1st Edition, August 2004

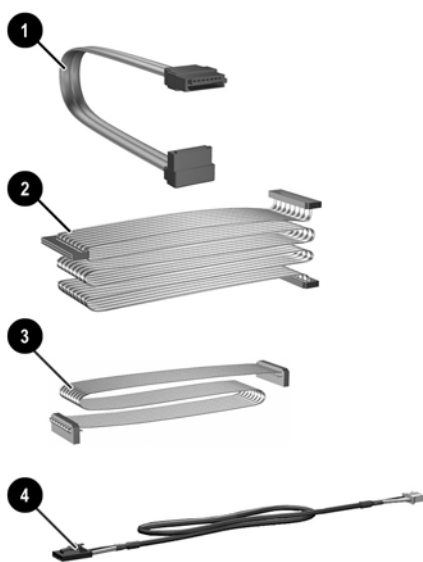
2nd Edition, September 2004

Document Number
361294-002



Standard and Optional Boards

1	System board with alcohol pad and thermal grease	365864-001
Memory Modules		
*	128 MB/400 MHz FSB	335697-005
*	256 MB/400 MHz FSB	335698-005
*	512 MB/400 MHz FSB	335699-005
*	1.0 GB/400 MHz FSB	335700-005
Intel Pentium 4 Processors with alcohol pad and thermal grease		
*	2.8 GHz(800 MHz FSB, 1MB cache)	367594-001
*	3.0 GHz(800 MHz FSB, 1MB cache)	366643-001
*	3.2 GHz(800 MHz FSB, 1MB cache)	366644-001
Other Cards		
*	PCI Modem, International, FH bracket	361286-021
*	Intel Gigabit NIC	314901-005
*	FireWire 1394 card, 2 ext/1 int port, FH bracket	361552-001
Graphics Solutions		
*	4 Layer ADD2 graphics	361265-001
*	ATI RV370 VGA graphics, 64M, FH bracket, PCI Express	361267-001
*	ATI RV370 VGA graphics, 128M, FH bracket, PCI Express	361266-001



Cables

1	SATA Hard drive cable (326965-001)	346141-005
2	IDE UATA dual device, Optical Disk Drive data cable, 14" (108950-038)	257048-005
3	Diskette drive cable (143218-005)	257309-005
4	CD-ROM audio cable (387527-001)	149806-001
*	Power/LED cable with switch and switch holder	370859-001

*Not shown

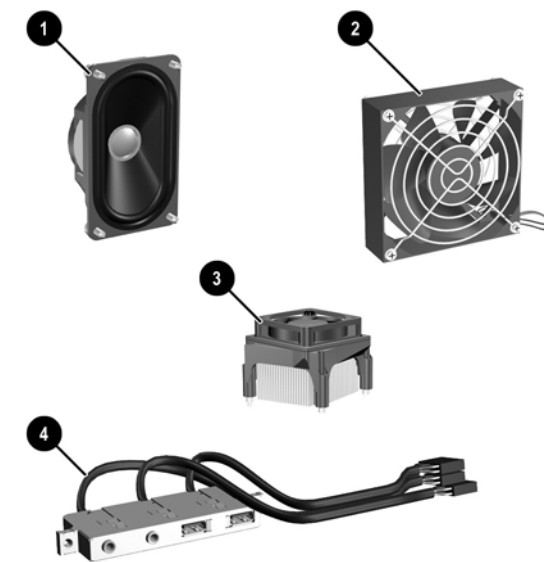
Standard Keyboard (not illustrated)

PS/2, Basic	355630-xxx	USB, Basic	355631-xxx	USB, Modular	355102-xxx
Arabic	-175	Japanese	-295		
Belgian	-185	Kazakh	-DF5		
BHCSY	-B45	Korean (Hanguel)	-KD5		
Czech	-225	Norwegian	-095		
Danish	-085	PRC	-AA5		
Dutch	-DF5	Polish	-245		
Europe*	-025	Portuguese	-135		
Finnish	-355	Russian	-255		
French	-055	Slovakian	-235		
French Arabic	-DE5	Spanish	-075		
German	-045	Swedish	-105		
Greek	-155	Swiss	-115		
Hebrew	-BB5	Taiwanese	-AB5		
Hungarian	-215	Thai	-285		
International**	-B35	Turkish	-145		
Italian	-065	U.K.	-035		

* For 355102 only
**Not for 355102

USB Basic Keyboard (not illustrated)

Gray and carbonite	355632-xxx
Belgian	-185 International -B35
Danish	-085 Italian -065
French	-055 Swedish -105
German	-045 Swiss -115



Miscellaneous Parts

1	Speaker	326776-005
2	Chassis fan	366641-001
3	Heatsink with fan, alcohol pad, and thermal grease	367862-001
4	Front I/O device with cable (377405-001)	377461-001
*	Real-time clock battery	153099-001
*	Drive Key, 128 MB	349988-005
*	Drive Key, 256 MB	344249-005
*	Kensington cable lock	370856-001
*	Rubber foot (4 ea)	370708-001
*	PC-MCIA Reader	331589-005
*	Port control	367861-001

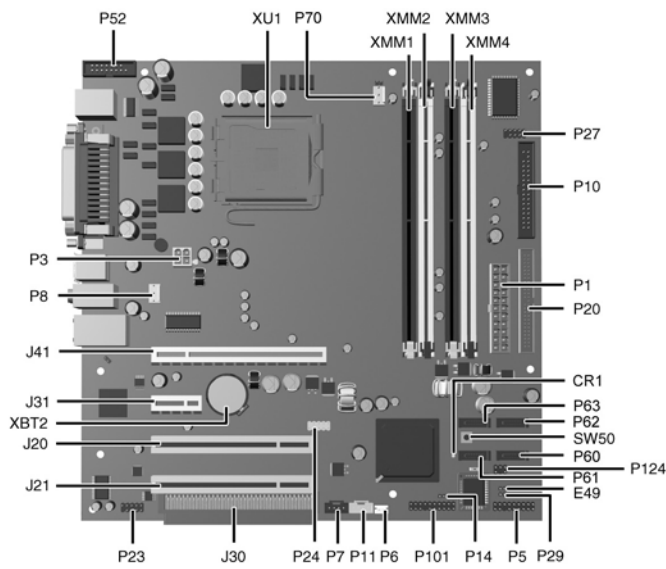
Mouse

*	2-Button, PS/2 with scroll wheel	323614-005
*	2-Button, USB, with scroll wheel	323615-005
*	2-Button, USB, optical with scroll wheel	323617-005

Miscellaneous screw kit, includes:

*	M3 x 5mm Full slot hi top, taptite (4 ea) (263585-001)
*	#6-32 x 1/4Hi top, taptite (4 ea) (262508-001)
*	#6-32 x 5/16 Hi top, taptite (2 ea) (262508-002)
*	#6-32 x 3/32 Hi top, taptite (4 ea) (262508-003)
*	#6-32 x 3/8 Tap tite with washer (1 ea) (114399-069)
*	#6-32 x 1/4 Thumbscrew (1 ea) (124702-004)
*	Countersunk, flat head plastite (1 ea) (247481-001)

*Not shown
#See next page



System Board Connectors and Jumpers (position of some untitled components may vary in location)

CR1	5V_Aux LED	P11	Aux audio in
E49	Password jumper	P14	Boot Block
J20	PCI slot 1	P20	Primary IDE
J21	PCI slot 2	P23	Front audio/USB
J30	PCI slot extender	P27	MiultiBay
J31	PCI Express x1	P29	SCSI LED
J41	PCI Express x16	P70	CPU fan
P1	Main power (20 pin)	P124	Hood lock
P3	CPU regulator power (4 pin)	SW50	CMOS button
P5	Front panel	XBT2	Battery
P6	Internal chassis speaker	XMM1	Memory socket
P7	CD audio in	XMM2	Memory socket
P8	Chassis fan	XMM3	Memory socket
P10	Diskette drive	XMM4	Memory socket
		XU1	Processor socket

System Hardware Interrupts

IRQ	System Function	IRQ	System Function
0	Timer Interrupt	8	Real-Time Clock
1	Keyboard	9	Unused
2	Interrupt Controller Cascade	10	Unused, available for PCI
3	Serial Port (COM B)	11	Unused, available for PCI
4	Serial Port (COM A)	12	Mouse
5	Unused, available for PCI	13	Coprocessor
6	Diskette Drive	14	Primary ATA (IDE) Controller
7	Parallel Port (LPT 1)		

Computer Diagnostic LEDs (on front of computer)

LED	Color	LED/Beep Activity	State/Message
Power	Green	On	(S0) Computer on
Power	Green	1 blink every 2 seconds	(S1) Suspend Mode
Power	Green	1 blink every 2 seconds	(S3) Suspend to RAM
Power	Clear	Off	(S4) Hibernation
Power	Clear	Off	(S5) Computer off
Power	Red*	2 blinks and beeps 1 second apart	CPU thermal shutdown
Power	Red*	3 blinks and beeps 1 second apart	CPU not installed
Power	Red*	4 blinks and beeps 1 second apart	Power supply overload (crow bar)
Power	Red*	5 blinks and beeps 1 second apart	Bad memory
Power	Red*	6 blinks and beeps 1 second apart	Graphics adapter error
Power	Red*	7 blinks 1 and beeps second apart	System board failure (detected prior to video)
Power	Red*	8 blinks and beeps 1 second apart	Invalid ROM checksum
Power	Red*	9 blinks and beeps 1 second apart	System not fetching code
Power	Red*	10 blinks and beeps 1 second apart	System hang while loading an option ROM
Hard Drive	Green	Blinking	Hard drive activity

*Blinking codes are repeated after a 2 second pause. Beeps stop after fifth iteration but LEDs continue until problem is resolved.

Keyboard Diagnostic LEDs, PS/2 Keyboards Only

LED	Color	LED Activity	State/Message
Num, Caps, Scroll Lock	Green	On (Rising Tone)	ROM reflashed successfully
Num Lock	Green	On	ROMPaq diskette not present, is bad, or drive not ready.*
Caps Lock	Green	On	Enter password.
Num, Caps, Scroll Lock	Green	Blink On in sequence, one at a time - N, C, SL	Keyboard locked in network mode

* Insert valid ROMPaq diskette in drive A. Turn power switch off, then on to reflash ROM. If ROM flash is successful, all three keyboard LEDs will light up, and you will hear a rising tone series of beeps. Remove diskette and turn power off, then on to restart the computer. For more information about flashing the ROM, refer to the Troubleshooting guide.

Clearing CMOS

The computer's configuration (CMOS) may occasionally be corrupted. If it is, it is necessary to clear the CMOS memory using switch SW50.

To clear and reset the configuration, perform the following procedure:

1. Prepare the computer for disassembly.

CAUTION: The power cord must be disconnected from the power source before pushing the Clear CMOS Button (NOTE: All LEDs on the board should be OFF). Failure to do so may damage the system board

2. Remove the access panel.
3. Press the CMOS button located on the system board and keep it depressed for 5 seconds.
4. Replace the access panel.
5. Turn the computer on and run F10 Computer Setup (Setup-utility) to reconfigure the system.

Disabling or Clearing the Power-On and Setup Passwords

1. Turn off the computer and any external devices, and disconnect the power cord from the power outlet.
2. Remove the access panel.
3. Locate the header and jumper labeled E49.
4. Remove the jumper from pins 1 and 2. Place the jumper over pin 2 only, in order to avoid losing it.
5. Replace the access panel.
6. Plug in the computer and turn on power. Allow the operating system to start.
NOTE: Placing the jumper on pin 2 clears the current passwords and disables the password features.
7. To re-enable the password features, repeat steps 1-3, then replace the jumper on pins 1 and 2.
8. Repeat steps 5-6, then establish new passwords.

Refer to the Computer Setup (F10 Setup) instructions to establish new passwords.

Computer Setup (F10) Utility Features (not all features may be available)

File	System Information About Set Time and date	Replicated Setup Default Setup Apply Defaults and Exit	Ignore Changes and Exit Save Changes and Exit
Storage	Device Configuration Storage Options	DPS Self-Test Boot Order	
Security	Setup Password Power-On Password Password Options Smart Cover Embedded Security	Drivelock Security Data Execution Prevention Master Boot Record Security Save Master Boot Record Restore Master Boot Record	Device Security Network Service Boot System IDs
Power	OS Power Management	Hardware Power Management	Thermal
Advanced	Power-On Options BIOS Power On Onboard devices	PCI Devices Bus Options	Device Options PCI VGA Configuration