

快速入门

Quick Start

you + hp



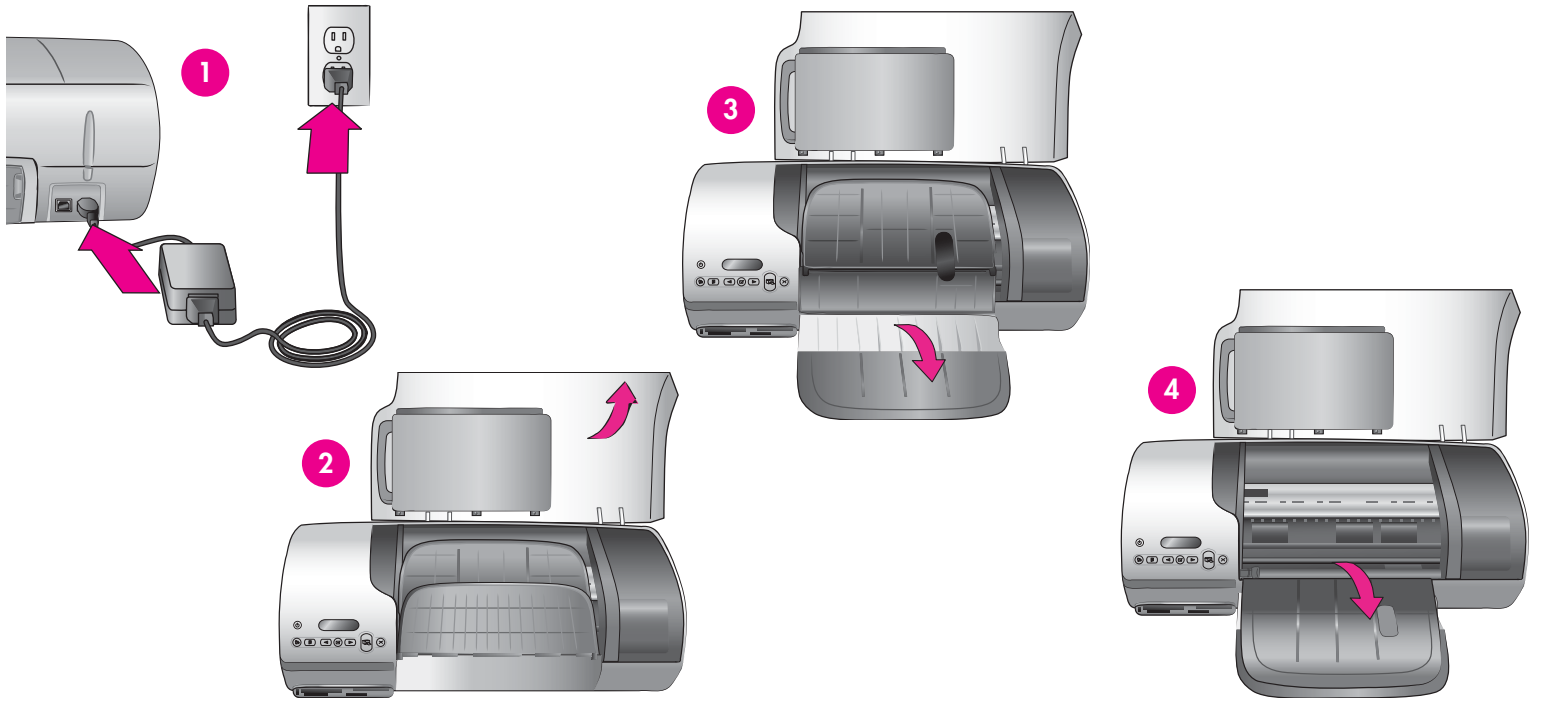
HP Photosmart 7400 series



2

接通电源并展开纸盘

Connect the power and unfold the paper trays



1. 将电源线的一端连接到打印机，另一端连接到墙壁插座。
2. 抬起顶盖。
3. 展开进纸盘。
4. 展开出纸盘。

重要： 软件安装期间，请勿在没有提示的情况下连接 USB 电缆。

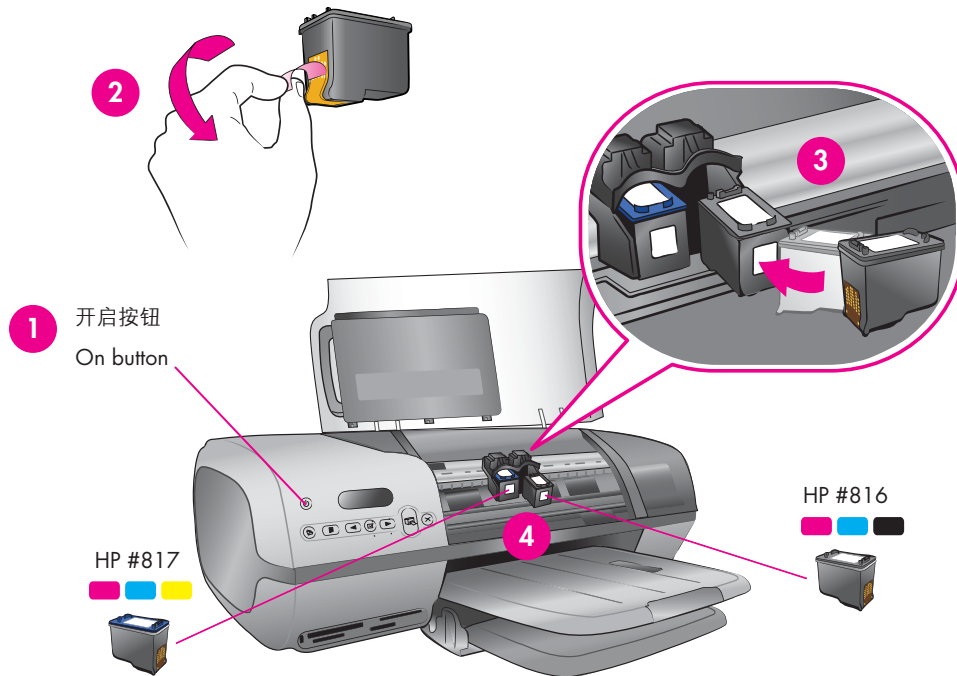
1. Connect one end of the power cord to the printer and the other end to a wall outlet.
2. Raise the top cover.
3. Unfold the In tray.
4. Unfold the Out tray.

Important: Do not connect the USB cable until you are prompted during software installation.

3

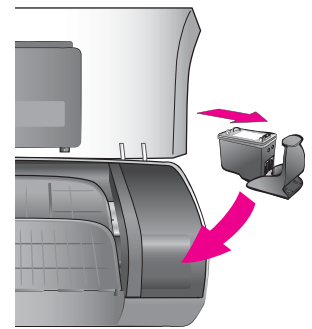
安装打印墨盒

Install the print cartridges



存放可选打印墨盒和保护器。*

Store the optional print cartridge and protector.*



1. 按**开启**按钮开启打印机。
2. 拉起粉色标签，撕掉两个打印墨盒上的透明胶带。**请勿触摸或卸下油墨喷嘴或铜色触点。**
3. 拿住墨盒，使铜色触点先进入打印机。打印墨盒上的标签应朝上。
4. 将三色打印墨盒 (HP #817) 略微向上倾斜，然后小心地推入底座左侧。用力推墨盒，直到卡入到位。重复上述过程，将黑色打印墨盒 (HP #816) 安装到底座右侧。
5. 放下顶盖。

* 将未使用的打印墨盒存放在此处。

您可以购买可选的照片打印墨盒 (HP #58)。要找到最适合打印作业的墨盒，请查看本小册子封底。

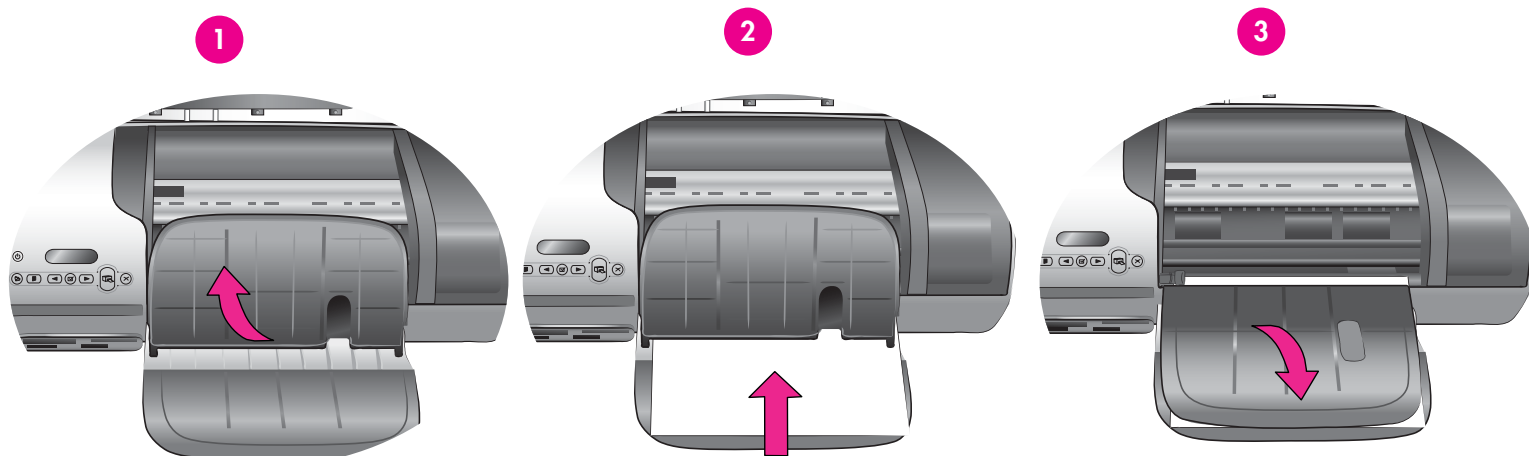
1. Press **On** to turn on the printer.
2. Pull the pink tab to remove the clear tape from both print cartridges. **Do not touch or remove the ink nozzles or copper-colored contacts.**
3. Hold the cartridge so the copper-colored contacts go into the printer first. The label on the print cartridge should face up.
4. Carefully slide the Tri-color print cartridge (HP #817) into the left side of the cradle at a slight upward angle. Push the cartridge in firmly until it snaps into place. Repeat this process to install the Black print cartridge (HP #816) on the right side of the cradle.
5. Lower the top cover.

* Store any unused print cartridge here.

You can purchase an optional Photo print cartridge (HP #58). Check the back cover of this booklet to find out the best cartridges to use for your print projects.

4 装入普通纸

Load plain paper



装入普通纸，以校准打印墨盒。

1. 抬起出纸盘。
2. 将一叠普通 letter 纸（不超过 100 张）装入进纸盘。
5. 放下出纸盘。

注意：要打印 10x15 厘米（4x6 英寸）的精美照片，请使用照片盒。有关详细信息，请参见本小册子第 12 页或《用户指南》。

Load plain paper to align the print cartridges.

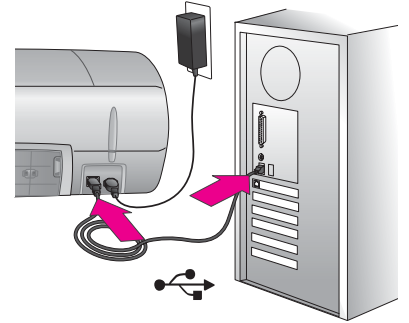
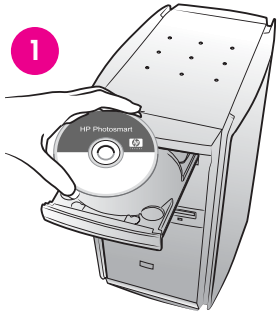
1. Raise the Out tray.
2. Place a stack of plain letter paper (no more than 100 sheets) in the In tray.
3. Lower the Out tray.

Note: To print beautiful 10x15 cm (4x6 inch) photos, use the Photo cassette. See page 12 of this booklet or the User's Guide for more information.

5 Windows

安装 HP Photosmart 软件

Install the HP Photosmart software



Macintosh 安装请参见第 7 页。

See page 7 for Macintosh installation.

重要： 请勿在没有提示的情况下连接 USB 电缆。

典型安装的软件可以查看、编辑和共享图像。仅当硬盘驱动器空间不足时才选择“最小”安装。

1. 将 HP Photosmart CD 插入计算机，然后遵循屏幕指示操作。如果没有出现指示，请双击 CD 上的 **setup.exe** 文件。

注意： 如果出现**发现新硬件**屏幕*，请单击**取消**，拔下 USB 电缆，然后重新启动安装程序。

2. 出现提示后，请使用 USB 电缆连接打印机和计算机。复制文件会占用几分钟，如果系统版本较旧，时间可能更长。
3. 出现“祝贺”屏幕后，请单击**打印演示页**。
4. 要获得最佳打印质量和速度，请校准打印墨盒。有关详细信息，请参见本小册子第 14 页或屏幕上的“HP Photosmart 打印机帮助”。

注意： 如果安装期间遇到问题，请参见第 8 页的疑难排除。

*



Important: Do not connect the USB cable until prompted.

The **Typical** installation provides software to view, edit, manage, and share images. Only choose Minimum if you have limited hard drive space.

1. Insert the HP Photosmart CD into the computer and follow the onscreen instructions. If instructions do not appear, double-click the **setup.exe** file on the CD.

Note: If the **Found New Hardware** screen appears*, click **Cancel**, unplug the USB cable, and restart the installation.

2. When prompted, connect the printer and computer with the USB cable. It may take several minutes to copy files and possibly longer on older systems.
3. When the Congratulations page appears, click **Print a demo page**.
4. For optimal print quality and speed, align the print cartridges. See page 14 of this booklet or the onscreen HP Photosmart Printer Help for more information.

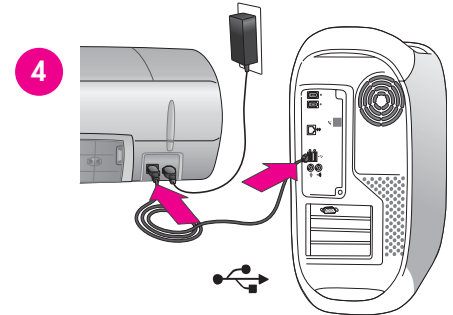
Note: If you experience problems during installation, see troubleshooting on page 8.

*



5 Macintosh

安装 HP Photosmart 软件 Install the HP Photosmart software



Windows 安装请参见第 6 页。

See page 6 for Windows installation.

重要： 请勿在没有提示的情况下连接 USB 电缆。

1. 将 HP Photosmart CD 插入计算机。
2. 双击 HP Photosmart CD 图标。
3. 双击“HP Photosmart Install”图标，然后遵循屏幕指示操作。
4. 出现提示后，请使用 USB 电缆连接打印机和计算机。复制文件会占用几分钟，如果系统版本较旧，时间可能更长。
5. 在 Print（打印）对话框中选择打印机。如果列表中没有显示该打印机，请选择 Add Printer（添加打印机）。
6. 要获得最佳打印质量和速度，请校准打印墨盒。有关详细信息，请参见本小册子第 14 页或屏幕上的“HP Photosmart 打印机帮助”。

注意： 如果安装期间遇到问题，请在屏幕上的“HP Photosmart 打印机帮助”中查看疑难排除信息。

Important: Do not connect the USB cable until prompted.

1. Insert the HP Photosmart CD into the computer.
2. Double-click the HP Photosmart CD icon.
3. Double-click the HP Photosmart Install icon. Follow the onscreen instructions.
4. When prompted, connect the printer and computer with the USB cable. It may take several minutes to copy files and possibly longer on older systems.
5. Select the printer in the Print dialog box. If the printer does not appear in the list, select **Add Printer** to add the printer.
6. For optimal print quality and speed, align the print cartridges. See page 14 of this booklet or the onscreen HP Photosmart Printer Help for more information.

Note: If you experience problems during installation, check the onscreen HP Photosmart Printer Help for troubleshooting information.

如果打印机软件安装失败，或安装软件后打印机与计算机无法正常通信，请在此页寻找解决方案。如果仍需帮助，请查看打印机文档或联系客服服务中心。

请检查打印机与计算机之间的所有电缆连线，并确保所用的打印机软件为最新版本。

问题：如果“发现新硬件向导”打开后未能识别打印机，则可能是在软件安装尚未完成时连接了 USB 电缆。

解决方案：断开 USB 电缆，重新启动软件安装程序。在安装过程中显示相应提示时连接 USB 电缆。

问题：如果在软件安装过程中计算机停止响应，可能是由于后台正在运行防病毒软件或其他软件程序，因此减慢了安装进度。

解决方案：等待软件完成文件复制，此过程可能会占用几分钟。如果几分钟过后，计算机仍没有响应，请重新启动计算机，然后暂停或禁用所有运行中的防病毒软件，并退出其他所有软件程序，再依照第 6 页的指示重新安装打印机软件。**注意：**计算机重启后，防病毒软件会自动重新打开。

问题：如果安装期间出现“系统要求”对话框，表示计算机系统的某个组件不满足最低系统要求。

解决方案：升级该组件，使之达到最低系统要求，然后重新安装打印机软件。

问题：系统要求检查指出，计算机运行的 Internet Explorer 版本过旧。

解决方案：按键盘上的 **Ctrl + Shift**，然后在“系统要求”对话框中单击**取消**，忽略该对话框提示并完成软件安装。安装 HP Photosmart 软件后必须立即更新 Internet Explorer，否则 HP 软件将不能正常工作。**注意：**更新 Internet Explorer 后，不必重新安装 HP 软件。

问题：计算机不能读取 HP Photosmart CD。

解决方案：确保 CD 没有污迹或划痕。如果其他 CD 均能正常工作，只有 HP Photosmart CD 例外，则该 CD 可能已损坏。可以从 www.hp.com/support 下载打印机软件。如果其他 CD 也不能工作，则可能需要维修光驱。

If the printer software did not install successfully or if the printer and computer are not communicating properly after software installation, check this page for possible solutions. If you still need help, check the printer documentation or contact Customer Care.

Check all cable connections between the printer and computer, and ensure you are using the most recent version of the printer software.

Problem: If the Found New Hardware Wizard opens but doesn't recognize the printer, you may have connected the USB cable before completing the software installation.

Solution: Disconnect the USB cable and restart the software installation. Connect the USB cable when prompted during software installation.

Problem: If the computer stops responding during software installation, it may mean that virus protection software or another software program is running in the background and slowing down the installation process.

Solution: Wait while the software finishes copying files; this may take several minutes. If, after several minutes, the computer is still not responding, restart the computer, pause or disable any active virus protection software, quit all other software programs, and then reinstall the printer software using the instructions on page 6. **Note:** Your virus protection software will turn back on automatically when you restart the computer.

Problem: If the System Requirements dialog box appears during installation, it means a component of the computer system does not meet minimum system requirements.

Solution: Upgrade the component to the minimum system requirement and then reinstall the printer software.

Problem: The system requirements check indicates that the computer is running an outdated version of Internet Explorer.

Solution: Press **Ctrl + Shift** on the keyboard and click **Cancel** in the System Requirements dialog box to bypass the block and complete the software installation. You must update Internet Explorer immediately after installing the HP Photosmart software, or the HP software will not work properly. **Note:** You do not have to reinstall the HP software after updating Internet Explorer.

Problem: The computer could not read the HP Photosmart CD.

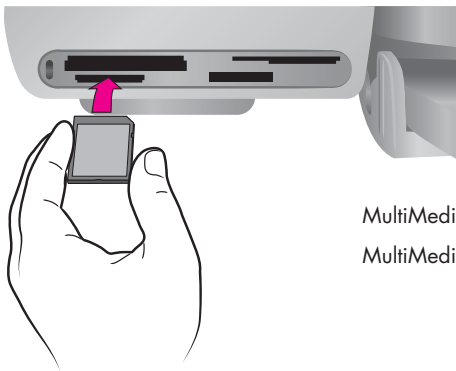
Solution: Make sure the CD isn't dirty or scratched. If other CDs work but the HP Photosmart CD does not, you may have a damaged CD. You can download the printer software from www.hp.com/support. If other CDs don't work, you may need to service the CD-ROM drive.

打印第一张照片

Print your first photo



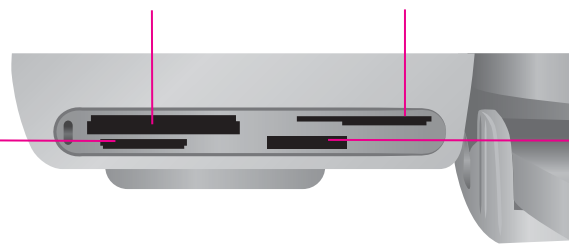
1 插入存储卡 Insert a memory card



MultiMediaCard 或 Secure Digital
MultiMediaCard or Secure Digital

Microdrive 或 CompactFlash
Microdrive or CompactFlash

SmartMedia 或 xD-Picture Card
SmartMedia or xD-Picture Card



Memory Sticks
Memory Sticks

注意：一次将一张存储卡插入打印机。

1. 正确的一面朝上拿住存储卡。有关使用存储卡的详细信息，请参见《用户指南》。
2. 将存储卡插入相应的存储卡插槽。将存储卡轻轻推入打印机，直到停住为止。打印机屏幕上随即出现数字 1，它代表卡上的第一张照片。

注意：存储卡不会完全插入打印机。如果强行将存储卡插得过深，可能导致存储卡或打印机损坏。

Note: Insert one memory card into the printer at a time.

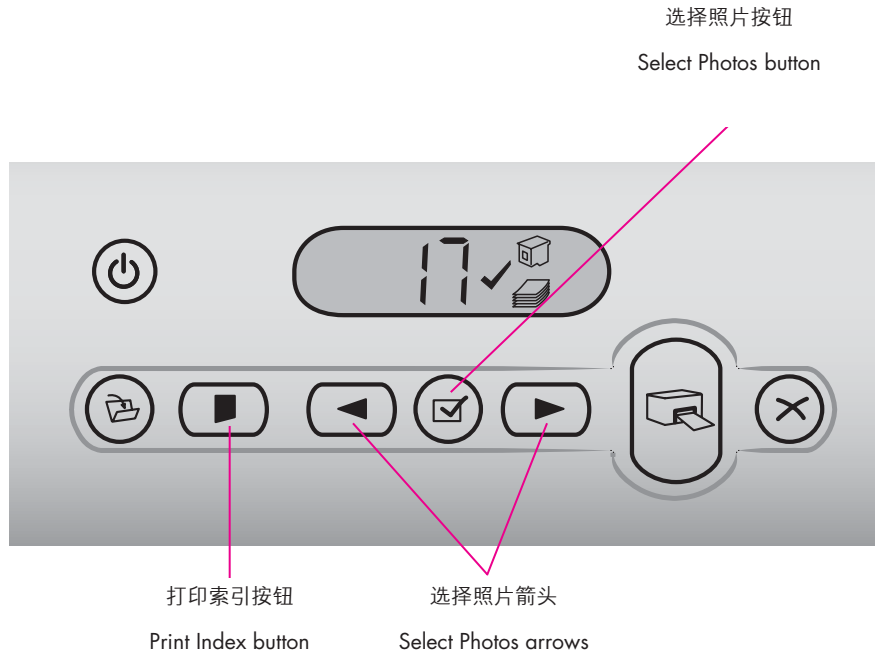
1. Hold the memory card so the correct side faces up. For more information about using memory cards, see the User's Guide.
2. Insert the memory card into the appropriate card slot. Gently push the memory card into the printer until it stops. The number 1, representing the first photo on the card, appears on the printer screen.

Note: The memory card does not insert all the way into the printer. Forcing the memory card into the printer too far may damage the memory card or the printer.

2

打印选择照片用的索引页

Print an index page to select a photo



要获得最佳打印质量和速度，请在安装打印墨盒后，使用 HP Photosmart 工具箱 (Windows) 或 HP Inkjet Toolbox (Macintosh) 校准打印墨盒。有关详细信息，请参见本小册子第 14 页或屏幕上的“HP Photosmart 打印机帮助”。

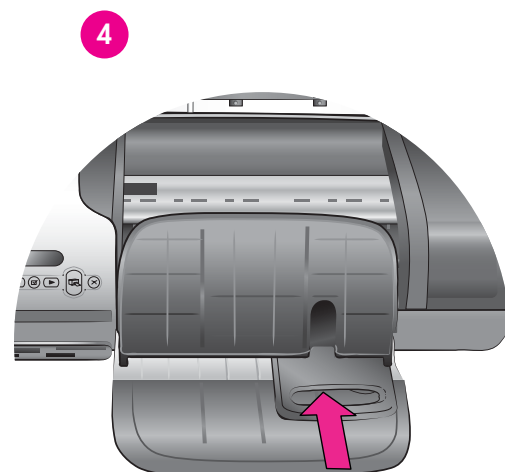
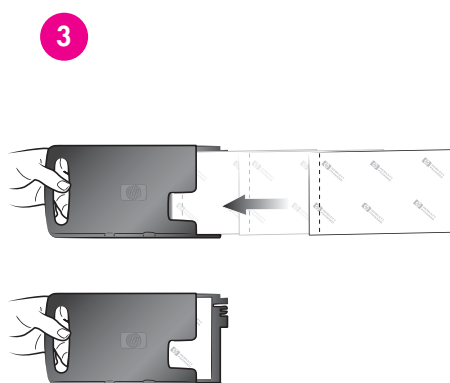
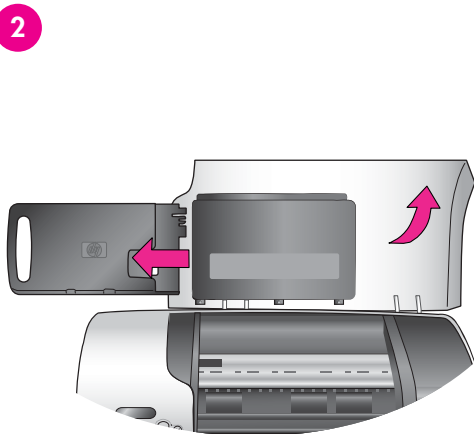
1. 确保进纸盘内装有几张普通纸。
2. 插入含照片的存储卡，然后按**打印索引**按钮。随即打印出索引页，其上包含存储卡上所有照片的缩略图和索引编号。
3. 按**选择照片**箭头，直到打印机屏幕上出现所需照片的索引编号。
4. 按**选择照片**按钮。打印机屏幕上出现选中标记，标明选中的照片。

For optimal print quality and speed, use the HP Photosmart Toolbox (Windows) or the HP Inkjet Toolbox (Macintosh) to align the print cartridges after you install them. See page 14 of this booklet or the onscreen HP Photosmart Printer Help for more information.

1. Make sure there are a few sheets of plain paper loaded in the In tray.
2. Insert a memory card that contains photos, and press **Print Index**. An index page prints that contains thumbnails and index numbers of all the photos on the memory card.
3. Press the **Select Photos** arrows until the desired photo's index number appears on the printer screen.
4. Press **Select Photos**. A check mark appears on the printer screen to indicate a photo is selected.

3 装入 10 x 15 厘米 (4 x 6 英寸) 照片纸

Load 10 x 15 cm (4 x 6 inch) photo paper

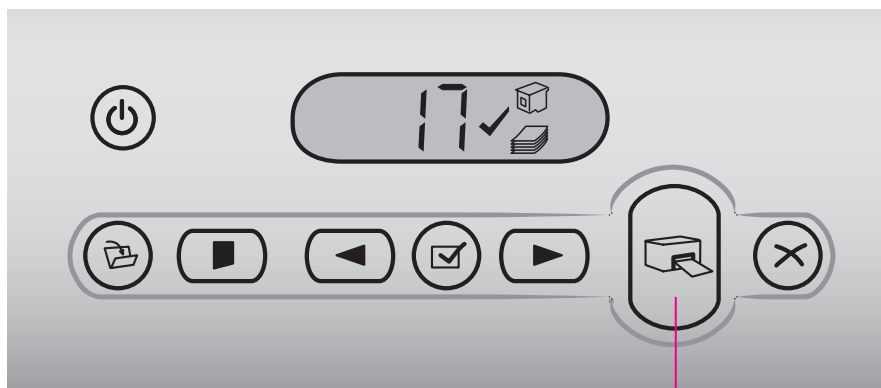


1. 抬起出纸盘，取出进纸盘中的所有纸张。
2. 抬起顶盖，从照片盒保存区取出照片盒。
3. 将最多 20 张带裁边的 10 x 15 厘米 (4 x 6 英寸) 打印面朝下装入照片盒。装入纸张，使带裁边的一端先进入盒中。
4. 沿进纸盘右侧推动照片纸盒，直到卡入到位。
5. 放下出纸盘。
6. 放下顶盖。

1. Raise the Out tray, and remove any paper from the In tray.
2. Raise the top cover and remove the photo cassette from its storage area.
3. Place up to 20 sheets of tabbed 10 x 15 cm (4 x 6 in.) photo paper in the photo cassette with the **side to be printed on facing down**. Insert the paper so the **tabbed end goes into the cassette first**.
4. Slide the photo paper cassette along the right side of the In tray until it snaps into place.
5. Lower the Out tray.
6. Lower the top cover

4 打印无边框照片

Print a borderless photo



打印按钮
Print button



可撕下的裁边
Removable tab

1. 确保要打印的照片旁边出现选中标记。
2. 按**打印**按钮。
3. 打印完照片后，请撕下载边以得到真正的无边框照片。

1. Make sure a check mark appears beside the index number of the photo you want to print.
2. Press **Print**.
3. When the photo is finished printing, remove the tab for a true borderless print.

快速提示

Quick tips



校准打印墨盒

Align the print cartridges

Windows




Macintosh



要确保最佳打印质量，每次安装或更换打印墨盒后必须校准墨盒。

Windows

1. 要打开“工具箱”，请在 Windows 任务栏上右击 ，然后选择 **Open HP Photosmart 7400 Series** 工具箱。
2. 选择**设备维护**选项卡。
3. 单击**校准打印墨盒**，然后遵循屏幕指示操作。

Macintosh

1. 要打开工具箱，请在 Dock 的 HP Photosmart 菜单中选择 **HP Inkjet Toolbox**。
2. 单击**校准**，然后遵循屏幕指示操作。

To ensure optimal print quality, each time you install or replace a print cartridge you must align the cartridges.

Windows

1. To open the Toolbox, right-click  in the Windows taskbar and select **Open HP Photosmart 7400 Series Toolbox**.
2. Select the **Device Services** tab.
3. Click **Align Print Cartridges**, and follow the onscreen instructions.

Macintosh

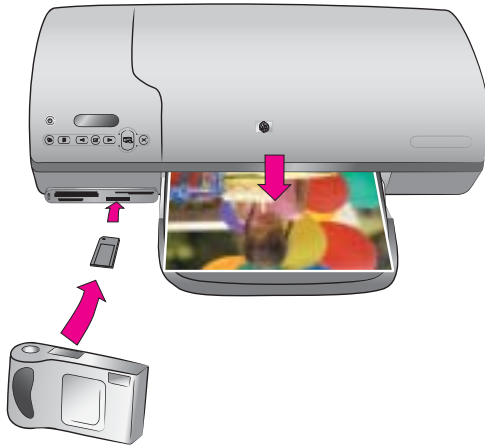
1. To open the Toolbox, choose **HP Inkjet Toolbox** from the HP Photosmart menu in the Dock.
2. Click **Align**, and follow the onscreen instructions.

打印无极限!

The possibilities are endless!

无需计算机，只用数码相机和存储卡即可打印出精美照片。

Print beautiful photos without a computer using your digital camera and a memory card.



或者

使用计算机和 HP Image Zone 软件打印精美绝伦的照片和有创意的项目。

OR

Print fabulous photos and creative projects using a computer and HP Image Zone software.



使用 HP Photosmart 7400 series 打印机，无需连接计算机，只用 HP 直接打印数码相机即可打印出精美照片。只需将存储卡直接插入打印机的相应存储卡插槽。

或者

使用连到计算机的打印机和

- HP Image Zone 软件，从数字照片创建有趣的项目，例如日历、小册子、相册、T 恤衫、CD 封面及相框
- HP Instant Share 软件，用电子邮件发送照片以及在线共享照片

注意：在 HP Photosmart 打印机软件的安装过程中选择“典型”(Windows) 或“Easy”(Macintosh) 后，会自动安装 HP Image Zone 和 HP Instant Share 软件。

The HP Photosmart 7400 series printer allows you to print beautiful photos from an HP direct-printing digital camera without connecting to a computer. Simply insert a memory card directly into the appropriate card slot on the printer.

OR

Use your printer with a computer and

- HP Image Zone software to create fun projects from digital photos, such as calendars, brochures, photo albums, T-shirts, CD covers, and picture frames
- HP Instant Share software to e-mail photos and share photos online

Note: HP Image Zone and HP Instant Share software are installed automatically when you choose the Typical (Windows) or Easy (Macintosh) installation of the HP Photosmart printer software.

安装适合您的打印项目的打印墨盒

Install the correct print cartridges for your project



三色和照片打印墨盒

Tri-color and Photo print cartridges



三色和黑白打印墨盒

Tri-color and Black print cartridges



三色和照片打印墨盒

Tri-color and Photo print cartridges

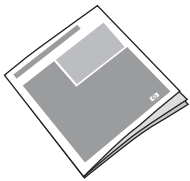


重要: 总要将未使用墨盒存放在打印机随附的打印墨盒保护器中。

Important: Always store the unused cartridge in the print cartridge protector that came with the printer.

需要更多信息吗?

Need more information?



用户指南

User's Guide



屏幕 Photosmart 打印机帮助

Onscreen Photosmart Printer Help



www.hp.com/support

www.hp.com



Q3409-90166



新加坡印刷, 2004 年 6 月 • v1.0.1 • 以再生纸印刷
© 2004 Hewlett-Packard Development Company, L.P.

Printed in Singapore 06/04 • v1.0.1 • Printed on recycled paper
© 2004 Hewlett-Packard Development Company, L.P.



i n v e n t