

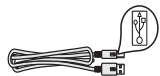
Start Here

從此處開始

1

Important: Do not connect the USB cable until Step 16 or software may not install properly. Follow the steps in order.

If you have problems during setup, see **Troubleshooting** in the last section.



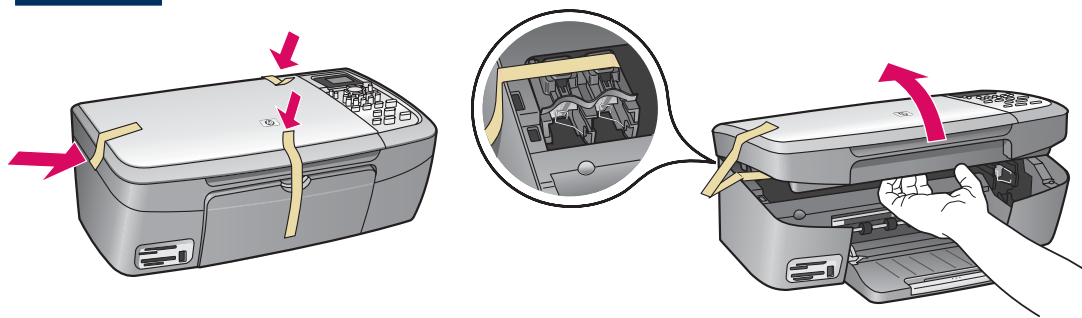
重要：在完成步驟 16 或尚未適當安裝軟體之前，請勿連接 USB 纜線。請按照步驟依序進行。

如果您在安裝時發生任何問題，請參閱最後一個章節中的[疑難排解]。

2

Remove all tape

撕掉所有膠帶



Lift the access door and remove tape inside the left side of the device.

掀起活動檔門，然後撕掉裝置左邊內側的膠帶。

3

Locate components

找出零件



Windows CD
Windows CD



print cartridges
列印墨匣



control-panel overlay
(may be attached)

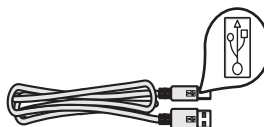
控制面板蓋片（可能已裝上）



Macintosh CD
Macintosh CD



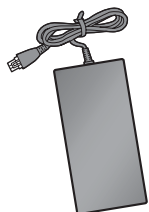
power cord and
adapter
電源線與電源轉接器



USB cable*
USB 纜線*



User Guide
使用者指南



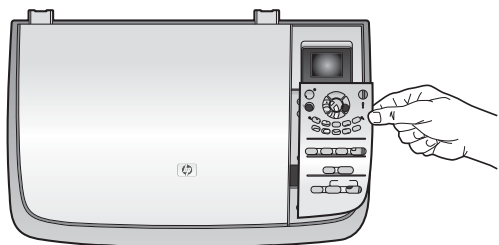
* Purchased separately.
The contents of your box may differ.
* 需另外購買。
包裝盒內容可能有所差異。



4

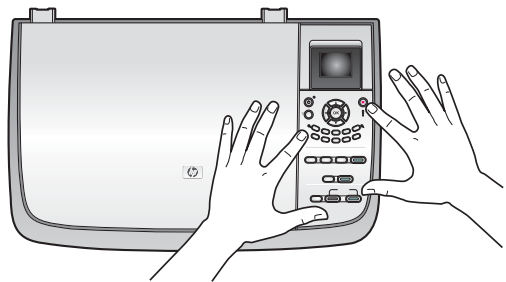
Attach the control-panel overlay (if not attached)

裝上控制面板蓋片 (若尚未裝上)



a Position the control-panel overlay above the device.

b Press down firmly on all edges of the overlay to secure it.



a 將控制面板蓋片置於裝置之上。

b 在蓋片的所有邊緣上均勻用力按下以裝上它。

The control-panel overlay must be attached for the HP all-in-one to work!

HP all-in-one 必須裝上控制面板蓋片才能運作！

5

Lift the color graphics display

掀起彩色圖形顯示器



Raise the color graphics display.

掀起彩色圖形顯示器。

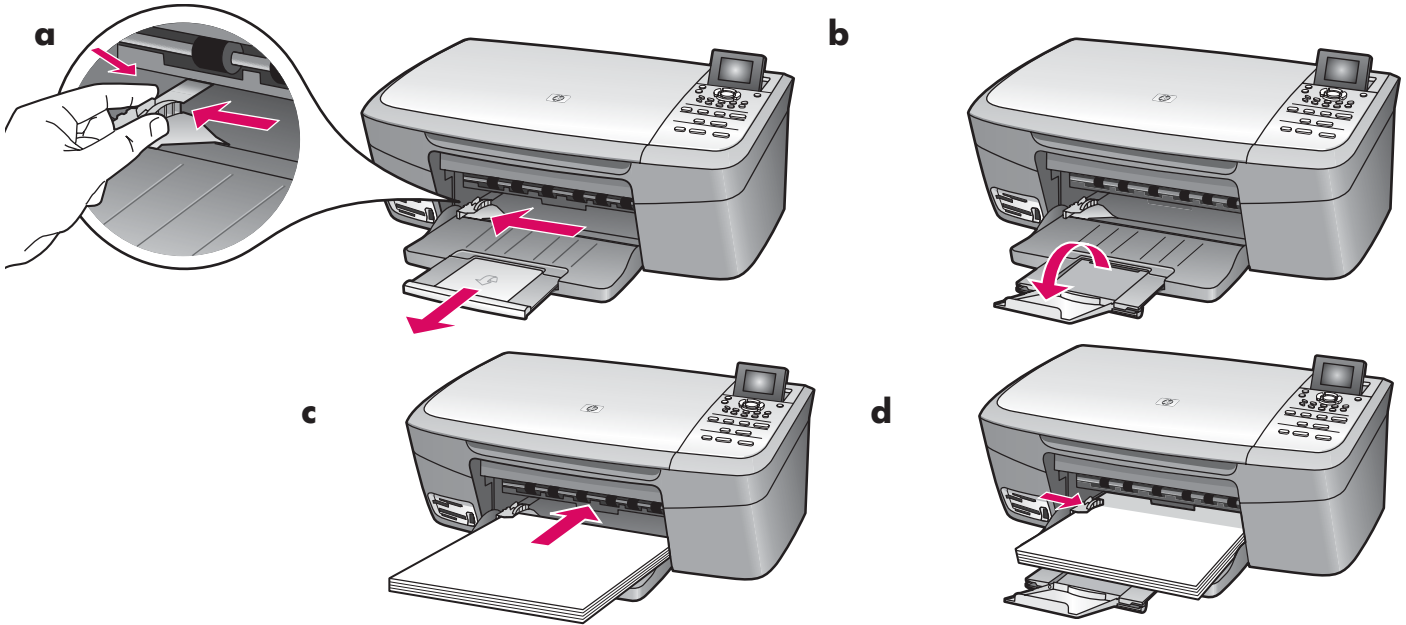
For best viewing, remove the protective film from the display.

爲了獲得最佳檢視效果，請撕掉螢幕上的保護膜。

6

Load plain white paper

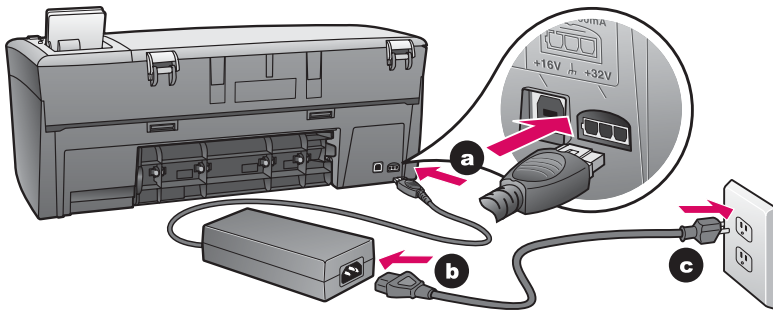
放入白紙



7

Connect the power cord and adapter

連接電源線與電源轉接器



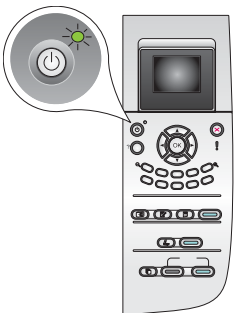
8

Press the On button and configure

按下 [開啟] 按鈕和設定

On

開啟



a After you press the **On** button, the green light flashes, and then becomes solid. This may take up to a minute.

b Wait for the language prompt. Use the arrow keys to select your language, and then confirm. Use the arrow keys to select your country/region, and then confirm.

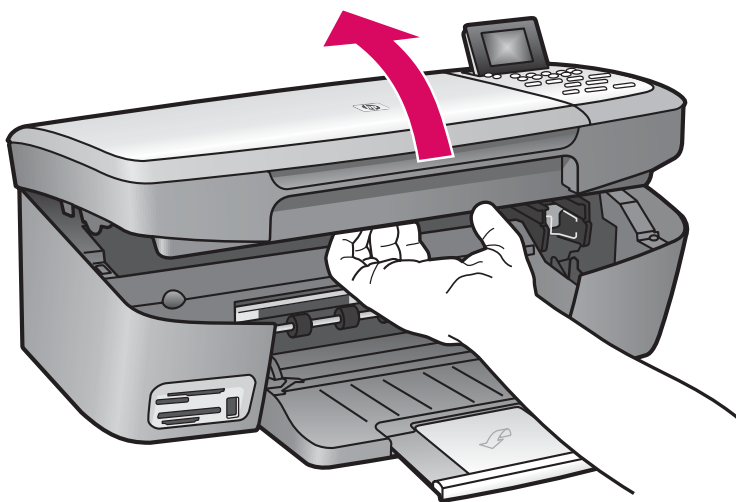
a 您按下 [開啟] 按鈕之後，綠燈會開始閃爍，然後變成持續亮綠燈。此過程可能要花一分鐘的時間。

b 請等候語言提示。使用方向鍵選擇您的語言，然後確認。使用方向鍵選擇您的國家/地區，然後確認。

9

Open access door

開啟活動檔門



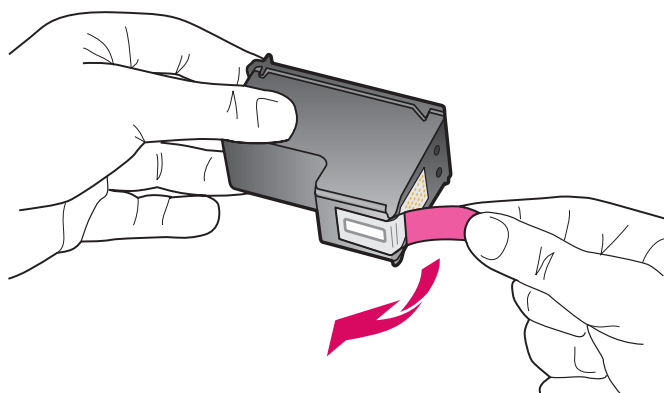
Lift the access door until it stops.

掀起活動檔門直到它停住為止。

10

Remove tape from both cartridges

撕掉兩個墨匣上的膠帶



Pull the pink tab to remove the tape from **both** print cartridges.

拉動粉紅色標籤以撕掉兩個列印墨匣的膠帶。



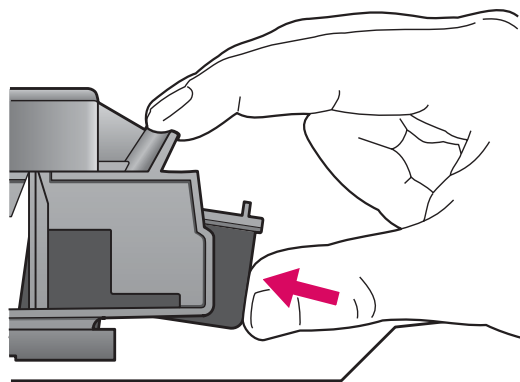
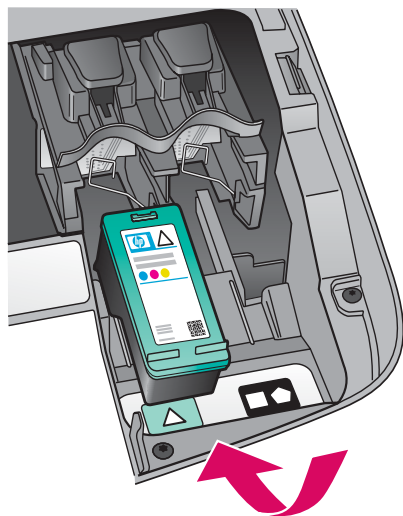
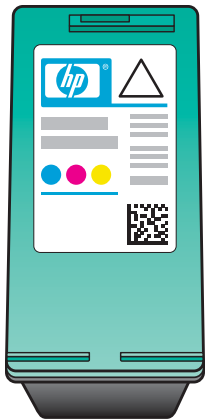
Do not touch the copper-colored contacts or retape the cartridges.

請勿接觸銅色的接點或重新將膠帶貼回墨匣。

11

Insert the tri-color print cartridge

插入三色列印墨匣



The device must be **On** before you can insert the print cartridges.

- a** Hold the **tri-color** print cartridge with the HP label facing up.
- b** Place the **tri-color** print cartridge in front of the **left** slot.
- c** Push the cartridge firmly into the slot until it snaps into place.

在插入列印墨匣之前，裝置必須在開啟狀態。

- a** 握住三色列印墨匣，讓 HP 標籤朝上。
- b** 將三色列印墨匣置入左插槽的前方。
- c** 穩當地將墨匣推進插槽中，直到它固定為止。

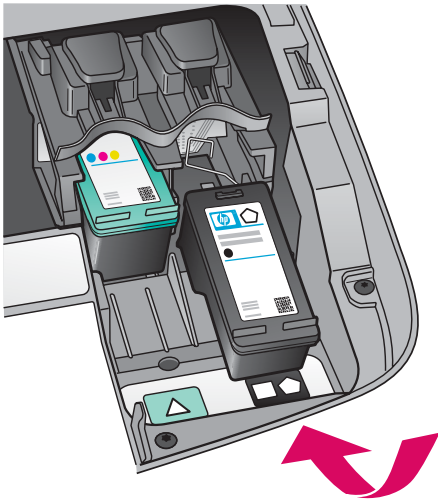
12

Insert the black print cartridge

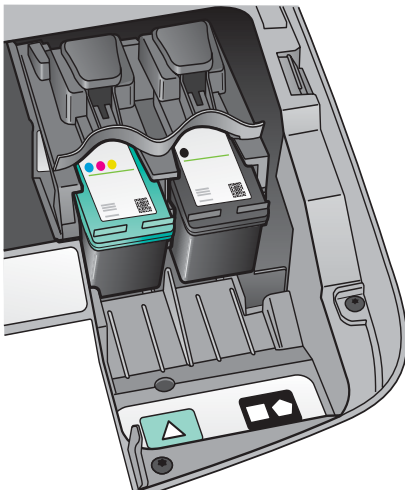
插入黑色列印墨匣

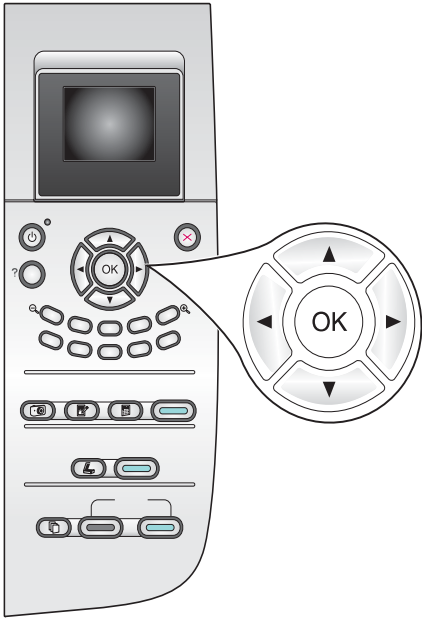


- a Hold the **black** print cartridge with the HP label facing up.
- b Place the **black** print cartridge in front of the **right** slot.
- c Push the cartridge firmly into the slot until it snaps into place.
- d Close the access door.



- a 握住黑色列印墨匣，讓 HP 標籤朝上。
- b 將黑色列印墨匣置入右插槽的前方。
- c 直直地將墨匣推進插槽中，直到它固定為止。
- d 關閉活動檔門。





- a** Press **OK** at each of the prompts on the control panel to start print cartridge alignment.

The alignment may take a few minutes.

- b** After the page prints, alignment is complete. Check the color graphics display for the status, and then press **OK**. If it fails, see **Troubleshooting** in the last section.

Recycle or discard the alignment page.



- a** 在控制面板的每個提示中按 [確定] 以校正開始列印墨匣。

校正過程將會花幾分鐘的時間。

- b** 列印校正頁之後，校正就算完成。檢視彩色圖形顯示器以查看狀態，然後按 [確定]。如果狀態是失敗，請參閱最後一個章節中的 [疑難排解]。

回收或丟棄該校正頁。

If you are not connecting the device to a computer, continue to the User Guide for information on how to get started.

若您尚未將裝置連接到電腦，請繼續參閱《使用者指南》的內容，取得開始連接的說明資訊。

14

Turn on your computer

打開電腦的電源



a Turn on your computer, login if necessary, and then wait for the desktop to appear.

b Close any open programs.

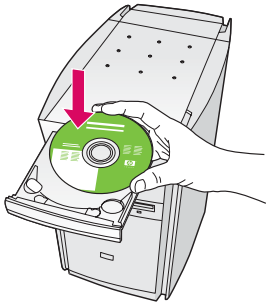
a 打開電腦的電源，必要時請登入，接著等候桌面出現。

b 關閉任何開啓的程式。

15

Insert the correct CD

插入正確的 CD



Windows Users:

a Insert the HP all-in-one **Windows** CD.

b Follow the onscreen instructions.

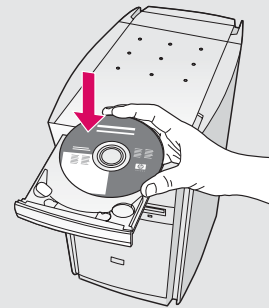
Windows 使用者：

a 插入 HP all-in-one **Windows** CD。

b 依照螢幕上的指示進行。

If the startup screen does not appear, double-click **My Computer**, double-click the **CD-ROM** icon, and then double-click **setup.exe**.

如果沒有顯示啟動畫面，請連按兩下 [我的電腦] 裡的 [CD-ROM] 圖示，再接著連按兩下 **setup.exe**。



Macintosh Users:

Insert the HP all-in-one **Macintosh** CD. Go to the next step before installing software.

Macintosh 使用者：

插入 HP all-in-one **Macintosh** CD。在安裝軟體之前，請先進行下一步驟。

16

Connect the USB cable

連接 USB 纜線

Windows Users:

You may have to wait several minutes before you see the onscreen prompt to connect the USB cable. Once the prompt appears, connect the USB cable to the port on the back of the HP all-in-one, and then to **any USB port** on your computer.

Windows 使用者：

看見螢幕提示連接 USB 纜線之前可能必須等候幾分鐘。當出現提示時，將 USB 纜線一頭連接到 HP All-in-One 後方的連接埠上，然後將另一頭連接到您電腦上的任一 **USB 連接埠**。



If you do not see this screen, see **Troubleshooting** in the last section.

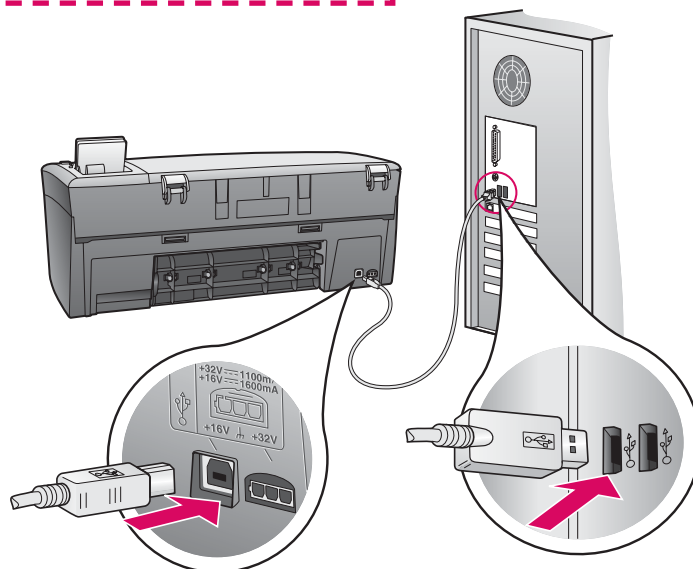
如果沒有看到這個畫面，請參閱最後一個章節的 [疑難排解]。

Macintosh Users:

Connect the USB cable to the port on the back of the HP all-in-one, and then to **any USB port** on your computer.

Macintosh 使用者：

將 USB 纜線一頭連接到 HP All-in-One 後方的連接埠上，然後將另一頭連接到您電腦上的任一 **USB 連接埠**。



17

Continue software installation

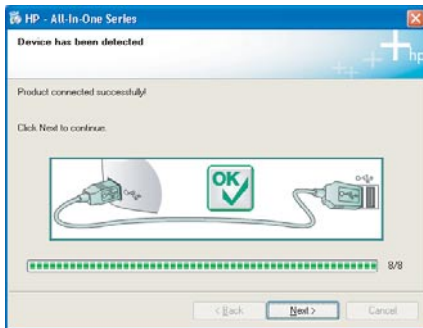
繼續軟體安裝

Windows Users:

If you do not see this screen, see **Troubleshooting** in the last section. Follow the onscreen instructions. Complete the **Sign up now** screen.

Windows 使用者：

如果沒有看到這個畫面，請參閱最後一個章節的 [疑難排解]。請遵循螢幕上的指示。完成 [立即註冊] 畫面。



Macintosh Users:

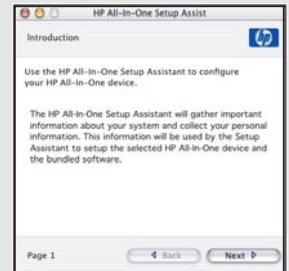
a Double-click the **HP All-in-One Installer** icon.

b Make sure you complete all screens, including the Setup Assistant.

Macintosh 使用者：

a 連按兩下 **HP All-in-One Installer** 圖示。

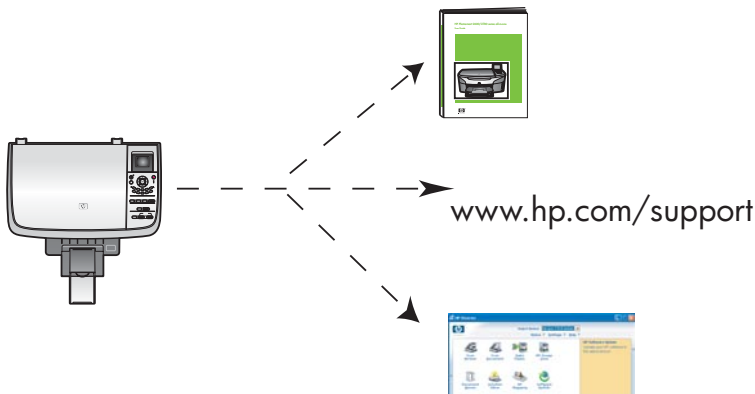
b 確定您完成所有畫面，包括「Setup Assistant（安裝助理）」。



18

Congratulations!

恭喜您！



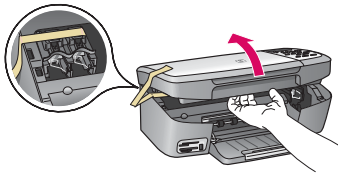
When you see the **Congratulations!** screen, you are ready to use your HP all-in-one.

See the User Guide or onscreen help to get started.

看到恭喜您！畫面時，表示您可以開始使用 HP all-in-one。

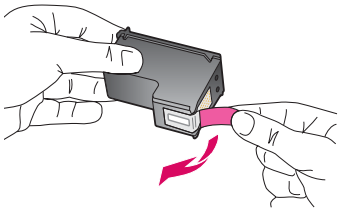
請參閱《使用者指南》或螢幕說明，開始使用本裝置。

Troubleshooting



Problem: A **Carriage Jam** message appears.

Action: Open the access door. Remove the tape from inside. Turn the power off, and then wait one minute. Turn the power on again.



Problem: The **Check Print Cartridge** message appears after you insert print cartridges or the print cartridge alignment fails.

Action: Remove print cartridges. Make sure you remove all tape from copper contacts. Re-insert the cartridges, and then close the access door.



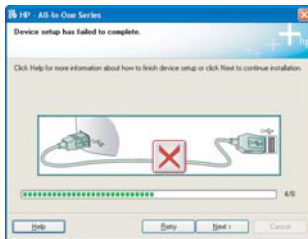
Problem: (Windows only) You did not see the screen telling you when to connect the USB cable.

Action: Remove, and then re-insert the HP all-in-one **Windows** CD. Refer to Step 15.



Problem: (Windows only) The **Microsoft Add Hardware** screen appears.

Action: Click **Cancel**. Unplug the USB cable, and then insert the HP all-in-one **Windows** CD. Refer to Steps 15 and 16.



Problem: (Windows only) **The Device Setup Has Failed To Complete** screen appears.

Action: Verify that the control-panel overlay is firmly attached. Unplug the device and plug it in again. Check all connections. Make sure the USB cable is plugged into the computer. Do not plug the USB cable into a keyboard or non-powered hub. Refer to Steps 4 and 16.



Problem: (Macintosh only) The Macintosh software does not install.

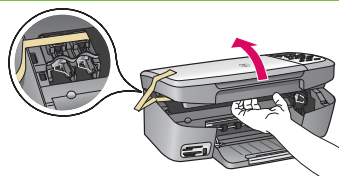
Action: Make sure the USB cable is plugged into the computer before installing the software. Do not plug the USB cable into a keyboard or non-powered hub. Refer to Step 16.

Refer to the User Guide for more information. Printed on recycled paper.
Visit www.hp.com/support for assistance.

疑難排解

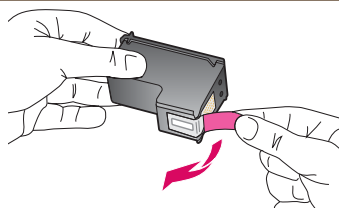


Q5786-90241



問題： 出現 [墨匣阻塞] 訊息。

動作： 開啓活動檔門。清除裡面的膠帶。將電源關閉，然後等候一分鐘。再開啓電源。



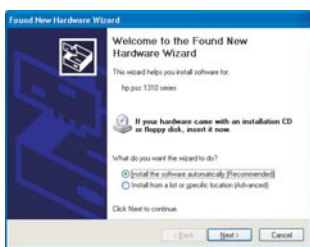
問題： 插入墨匣之後出現 [檢查墨匣] 訊息，或是墨匣校正失敗。

動作： 取出列印墨匣。確定已撕掉銅接點上的所有膠帶。重新插入墨匣，然後關閉活動檔門。



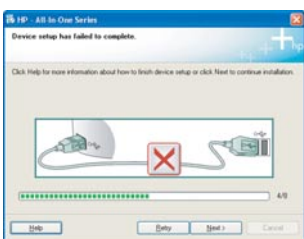
問題： (僅適用於 Windows) 當連接 USB 纜線時，畫面上沒有任何提示訊息。

動作： 拿出 HP all-in-one **Windows** CD，再重新插入。請參閱步驟 15。



問題： (僅適用於 Windows) 顯示 [**Microsoft** 新增硬體] 畫面。

動作： 按一下 [取消]。拔掉 USB 纜線，再插入 HP all-in-one **Windows** CD。請參閱步驟 15 和 16。



問題： (僅適用於 Windows) 顯示 [無法完成裝置安裝] 畫面。

動作 檢查控制面板蓋片是否有穩固裝好。請拔除裝置，再重新插上。檢查所有連線。確定 USB 纜線已插到電腦。請勿將 USB 纜線插到鍵盤、或是沒有啓用電源的集線器。請參閱步驟 4 和 16。



問題： (僅適用於 Macintosh) 沒有安裝 Macintosh 軟體。

動作： 安裝軟體之前，請先確定 USB 纜線已經插到電腦。請勿將 USB 纜線插到鍵盤、或是電源未開啓的集線器。請參閱步驟 16。

請參閱《使用者指南》以取得更多資訊。再生紙印製。請參觀 www.hp.com/support 以取得協助。

