

1 HP Deskjet 3740 series printer

To find an answer to a question, select one of the following topics:



- [Notices](#)
- [Special features](#)
- [Getting started](#)
- [Connecting to the printer](#)
- [Printing photos](#)
- [Printing other documents](#)
- [Printing tips](#)
- [Printer software](#)
- [Maintenance](#)
- [Troubleshooting](#)
- [Specifications](#)
- [Supplies](#)

2 Notices

- [Notices and acknowledgements](#)
- [Terms and conventions](#)

2.1 Notices and acknowledgements

Hewlett-Packard company notices

Reproduction, adaptation, or translation without prior written permission is prohibited, except as allowed under the copyright laws.

The information contained herein is subject to change without notice.

The only warranties for HP products and services are set forth in the express warranty statements accompanying such products and services. Nothing herein should be construed as constituting an additional warranty. HP shall not be liable for technical or editorial errors or omissions contained herein.

Acknowledgements

Apple, the Apple logo, AppleTalk, ColorSync, the ColorSync logo, Finder, Mac, Macintosh, MacOS, Powerbook, Power Macintosh, and Quickdraw are trademarks of Apple Computer, Inc., registered in the U.S. and other countries.

TrueType is a U.S. trademark of Apple Computer, Inc.

Adobe and Acrobat are trademarks of Adobe Systems Incorporated.

© 2004 Copyright Hewlett-Packard Development Company, L.P.

2.2 Terms and conventions

The following terms and conventions are used in the user's guide.

Terms

The HP Deskjet printer may be referred to as the **HP printer** or **printer**.

Cautions, warnings, and notes

A **Caution** indicates possible damage to the HP Deskjet printer or to other equipment. For example:



Caution: Do not touch the print cartridge ink nozzles or copper contacts. Touching these parts will result in clogs, ink failure, and bad electrical connections.

A **Warning** indicates possible harm to you or to others. For example:



Warning: Keep both new and used print cartridges out of the reach of children.

A **Note** indicates that additional information is provided. For example:

Note: For great results use HP products.

3 Special features

Congratulations! You have purchased an HP Deskjet printer that is equipped with several exciting features:

- **User friendly:** Easy to install and operate.
- **Borderless printing:** Print 4 x 6 inch photos to the edges of the paper by using the [borderless printing](#) feature.
- **Ink level indicator:** Know the approximate ink level of each print cartridge with the onscreen [ink level indicator](#).
- **Ink-backup mode:** Use [Ink-backup mode](#) to continue printing with one print cartridge when the other print cartridge has run out of ink.
- **Compact:** Small, lightweight, and easy to set up, store, or carry.



4 Getting started



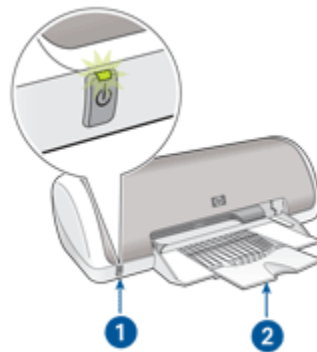
For an overview of the printer features, see the [printer features](#) page.

Click the appropriate topic for a description of a printer feature:

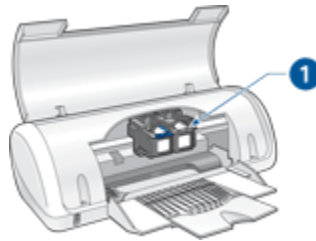
- [Power button and light](#)
- [Paper tray](#)
- [Print cartridges](#)
- [Ink-backup mode](#)

4.1 Printer features

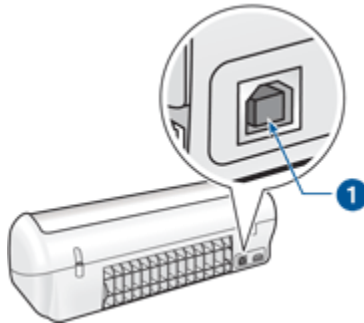
The printer has several features to make printing easier and more efficient.



1. [Power button and light](#)
2. [Paper tray](#)



1. Print cartridges



1. USB port

4.2 Power button and light

The Power button turns the printer on and off. It can take a few seconds for the printer to turn on after you press the Power button. The light on the Power button flashes when the printer is processing a job.



1. Power button and light



Caution: Always use the Power button to turn the printer on and off. Using a power strip, a surge protector, or a wall-mounted switch to turn the printer on and off can cause printer failure.

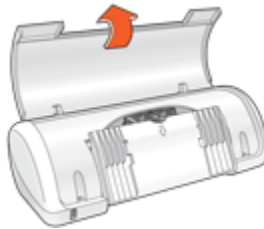
4.3 Paper tray

The fold-out paper tray holds paper and other media to be printed. Unfold the paper tray before printing.

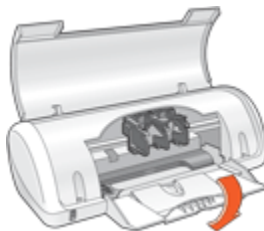
Unfolding the paper tray

Follow these steps to unfold the paper tray:

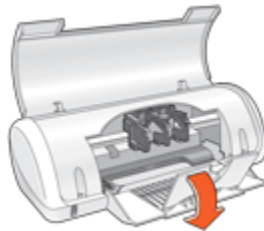
1. Raise the printer cover.



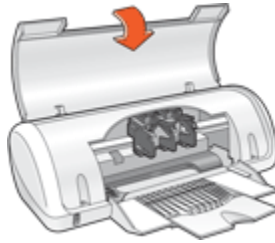
2. Lower the paper tray.



3. Fold out the tray extension.

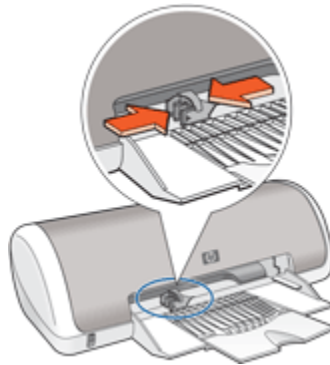


4. Lower the printer cover.



Using the paper tray

Print on different sizes of media by sliding the paper guide to the right or to the left. The printer deposits printed pages on the top of the paper tray.



Note: The [print cartridges](#) must be installed before printing.

4.4 Print cartridges

Two print cartridges are available for use with the printer.



1. Tri-color print cartridge
2. Black print cartridge

Replacing print cartridges

When buying print cartridges, look for the print cartridge selection number.

You can find the selection number in these places:

- Selection number label: Look at the label on the print cartridge that you are replacing.



1. Selection number label

- Printer documentation: For a list of print cartridge selection numbers, see the reference guide that came with the printer.
- HP Inkjet Toolbox: Open the [HP Inkjet Toolbox](#), and then select the **Supplies** panel.

If a print cartridge runs out of ink, the printer can operate in the [ink-backup mode](#).

For information about installing a print cartridge, see the [print cartridge installation page](#).

4.5 Ink-backup mode

In the ink-backup mode, the printer operates by using only one print cartridge. The ink-backup mode is initiated when a print cartridge is removed from the print cartridge cradle.

For instructions about removing a print cartridge, see the [print cartridge installation page](#).

Ink-backup mode output

Printing in ink-backup mode slows the printer and affects the quality of printouts.

Installed print cartridge	Result
Black print cartridge.	Colors are printed as grayscale.
Tri-color print cartridge.	Colors print but black is grayed and is not a true black.

Exiting ink-backup mode

Install two print cartridges in the printer to exit the ink-backup mode.

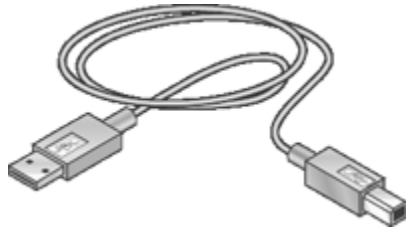
For instructions about installing a print cartridge, see the [print cartridge installation page](#).

5 Connecting to the printer

- USB

5.1 USB

The printer connects to the computer with a universal serial bus (USB) cable.



For instructions about connecting the printer with a USB cable, see the setup poster that came with the printer.

6 Printing photos

Select the type of photograph that you want to print:



Large photo with a white border Small photo with a white border Small borderless photo

Enhancing your photos

Learn how to enhance your photographs by using the printer's [photo printing features](#).

6.1 Enhancing your photos

The printer software offers several features to make printing digital photos easier and improve photo quality:

- Use the [HP digital photography options](#) to touch up photos.
- Achieve the highest resolution with [Maximum dpi](#).
- Use [HP Everyday Photo Paper, Semi-gloss](#) to save money and ink when printing photos.

Learn how to add professional touches to your digital photographs:

- Print [black-and-white photos](#).
- Print to the edges of the photo paper with [borderless printing](#).

To prevent photo paper from curling, follow the [photo paper storage guidelines](#).

6.2 HP digital photography options

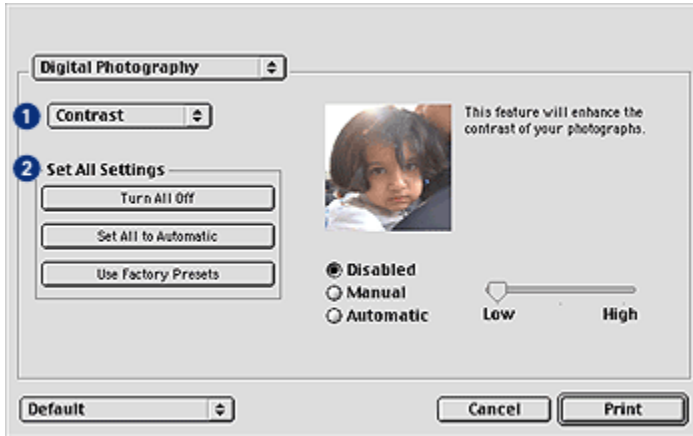
The printer has several features to improve the quality of digital photographs.

Follow these steps to gain access to the **Digital Photography** panel.

1. Open the [Print](#) dialog box.
2. Select the **Digital Photography** panel.

Description

Use the **Digital Photography** panel to set these options:



1. **Options Menu:** Select from the following options:
 - **Digital Flash:** Lighten dark images. Click **Automatic** to allow the printer driver to automatically balance lightness and darkness.
 - **Contrast enhancement:** Adjust the contrast to your preference. Click **Automatic** to allow the printer driver to automatically balance the contrast.
 - **SmartFocus:** Enhance image quality and clarity. Click **On** to allow the printer driver to automatically sharpen details in the image.
 - **Smoothing:** Soften an image. Click **Automatic** to allow the printer driver to automatically set the level of smoothing for the image.
 - **Sharpness:** Adjust the image sharpness to your preference. Click **Automatic** to allow the printer driver to automatically set the level of sharpening for the image.
2. **Set All Settings Menu:** Select from the following settings options:
 - **Turn All Off:** Turns off all the digital photography options.
 - **Set All to Automatic:** Sets all the digital photography options to **Automatic**.
 - **Use Factory Presets:** Sets all the digital photography options to a set of predefined print options.

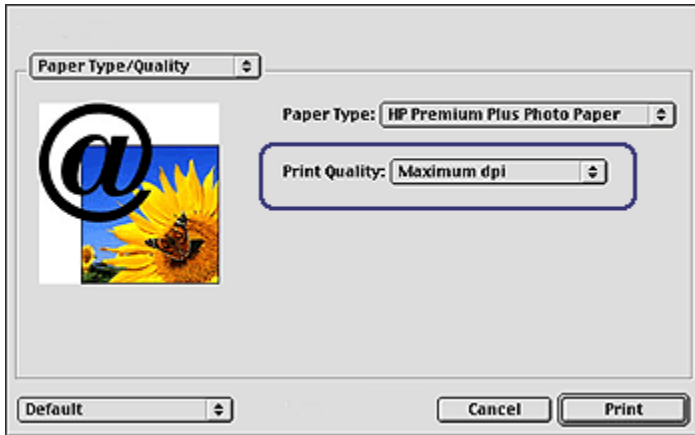
6.3 Maximum dpi

The **Maximum dpi** print quality setting offers 4800 x 1200 optimized dpi printing.

The 4800 x 1200 optimized dpi print mode is the highest quality resolution for this printer. When 4800 x 1200 optimized dpi is selected in the printer driver, the tri-color print cartridge prints in the 4800 x 1200 optimized dpi mode (up to 4800 x 1200 optimized dpi color and 1200-input dpi).

Follow these steps to print in the 4800 x 1200 optimized dpi mode:

1. Open the [Print](#) dialog box.
2. Select the **Paper Type/Quality** panel.



3. In the **Print Quality** drop-down list, click **Maximum dpi**.
4. Select any other print settings that you want, and then click **Print**.

6.4 Printing black-and-white photos

You can perform the following tasks with the printer:

- [Print a black-and-white photo](#)
- [Print a color photo in black-and-white](#)

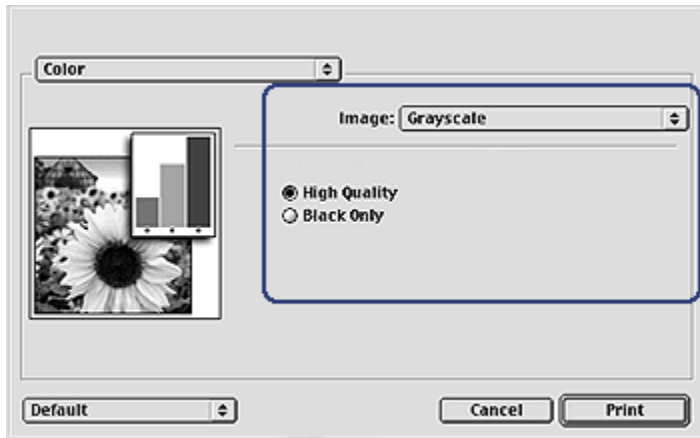
Printing a black-and-white photo

To print a photo that is already black and white, simply follow the instructions for the [type and size of photo](#) that you want to print.

Printing a color photo in black and white

Follow these steps to print a color photo in black and white:

1. Open the [Print](#) dialog box.
2. Select the **Color** panel.



3. In the **Image** drop-down list, click **Grayscale**.
4. Click the **High Quality** option.
5. Select any other print settings that you want, and then click **Print**.

6.5 Storing and handling photo paper

Follow these instructions to maintain the quality of your HP brand photo paper.

Storage

- Keep unused photo paper in a resealable plastic bag, in the box in which it was originally packaged. Store the packaged photo paper on a flat surface in a cool place.
- When you are ready to print, remove only the paper that you plan to use immediately from the plastic bag. When you have finished printing, return any unused photo paper to the plastic bag.
- Do not leave unused photo paper in the printer paper tray. The paper might start to curl, which can reduce the quality of your photographs.

Handling

- Always hold photo paper by its edges. Fingerprints on photo paper can reduce print quality.
- Verify that the photo paper is not curled. If the photo paper is curled, place the paper in a plastic bag and gently bend it the opposite direction of the curl until the paper lies flat. If the problem persists, use photo paper that is not curled.

6.6 Saving money when printing photos

HP Everyday Photo Paper

To save money and ink when printing photos, use **HP Everyday Photo Paper, Semi-gloss** and set the **Print quality** to **Normal**.

HP Everyday Photo Paper, Semi-gloss is designed to create quality photos with less ink.

Note: For higher-quality photos, use HP Premium Plus Photo paper and set the **Print quality** to **Best** or **Maximum dpi**.

6.7 Large photos with a white border

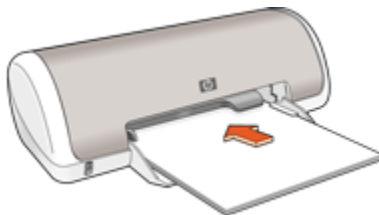
Guidelines

- To learn how to use the photo printing features, see the [photo enhancing](#) page.
- Use **HP Everyday Photo Paper, Semi-gloss** to save money and ink when printing photos.
- Verify that the photo paper that you are using is flat. For information about preventing photo paper from curling, see the [photo paper storage instructions](#).
- Do not exceed the paper tray capacity: Up to 15 sheets.

Preparing to print

1. Slide the paper guide to the left.
2. Place the paper with the side to be printed on facing down in the tray, and then push it into the printer until it stops.

The paper will extend over the edge of the tray.



3. Slide the paper guide firmly against the edge of the paper.

Printing

1. Open the [Page Setup](#) dialog box, and then select the following settings:

- **Paper Size:** The appropriate paper size
 - **Orientation:** The appropriate orientation
2. Click **OK**.
 3. Open the **Print** dialog box.
 4. Select the **Paper Type/Quality** panel, and then select the following settings:
 - **Paper Type:** Scroll down and select **Photo paper**, and then click the appropriate paper type.
 - **Print Quality:** **Best** or **Maximum dpi**.
 5. If you want to use them, set the **HP digital photography options**.
 6. Select any other print settings that you want, and then click **Print**.

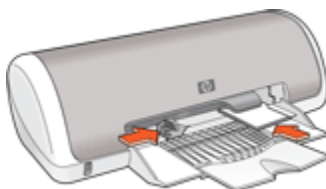
6.8 Small photos with a white border

Guidelines

- To learn how to use the photo printing features, see the [photo enhancing](#) page.
- Use **HP Everyday Photo Paper, Semi-gloss** to save money and ink when printing photos.
- Verify that the photo paper that you are using is flat. For information about preventing photo paper from curling, see the [photo paper storage instructions](#).
- Do not exceed the paper tray capacity: Up to 15 sheets.

Preparing to print

1. Slide the paper guide to the left.
2. Place the photo paper, with the side to be printed on facing down and the short edge pointing towards the printer, in the right side of the tray. Push the paper into the printer until it stops.



3. Slide the paper guide firmly against the edge of the paper.

Printing

1. Open the **Page Setup** dialog box, and then select the following settings:

- **Paper Size:** The appropriate paper size
 - **Orientation:** The appropriate orientation
2. Click **OK**.
 3. Open the **Print** dialog box.
 4. Select the **Paper Type/Quality** panel, and then select the following settings:
 - **Paper Type:** Scroll down and select **Photo paper**, and then click the appropriate paper type.
 - **Print Quality:** **Best** or **Maximum dpi**.
 5. If you want to use them, set the **HP digital photography options**.
 6. Select any other print settings that you want, and then click **Print**.

6.9 Borderless photos

Guidelines

- To print borderless photos, use 4 x 6 inch photo paper with a 0.5 inch tab (10 x 15 cm with 1.25 cm tab); the photo prints without borders on three sides and with a small border on the bottom edge that you tear off to make the photo completely borderless.
- To learn how to use the photo printing features, see the [photo enhancing](#) page.
- Use **HP Everyday Photo Paper, Semi-gloss** to save money and ink when printing photos.
- Verify that the photo paper that you are using is flat. For information about preventing photo paper from curling, see the [photo paper storage instructions](#).
- Do not print borderless photos in **ink-backup mode**. Always have two print cartridges installed in the printer.
- Open the file in a software program and assign the image size. Ensure that the size corresponds to the paper size on which you want to print the image.
- Do not exceed the paper tray capacity: Up to 15 sheets.

Preparing to print

1. Slide the paper guide to the left.
2. Place the photo paper, with the side to be printed on facing down and the short edge pointing towards the printer, in the right side of the tray. If you are using photo paper that has a tear-off tab, verify that the tab is pointing away from the printer. Push the paper into the printer until it stops.



3. Slide the paper guide firmly against the edge of the paper.

Printing

1. Open the [Page Setup](#) dialog box, and then select the following settings:
 - **Paper Size:** The appropriate borderless paper size
 - **Orientation:** The appropriate orientation
2. Click **OK**.
3. Open the [Print](#) dialog box.
4. Select the **Paper Type/Quality** panel, and then select the following settings:
 - **Paper Type:** Scroll down and select **Photo paper**, and then click the appropriate paper type.
 - **Print Quality:** **Best** or **Maximum dpi**.
5. If you want to use them, set the [HP digital photography options](#).
6. Select any other print settings that you want, and then click **Print**.

When you print on 4 x 6 inch photo paper with tear-off tabs, the printout is completely borderless after the tear-off strip is removed.



When you print on 4 x 6 inch photo paper without tear-off tabs, the printout is borderless on three sides and has a border on the bottom.



7 Printing other documents



E-mail



Letters



Documents



Envelopes



Labels



Brochures



Greeting cards



Transparencies



Index cards



Iron-on transfers

Printing tips

Minimize your cost and effort while maximizing the quality of your printouts by using these [printing tips](#).

Printer software

Learn about the [printer software](#).

7.1 E-mail

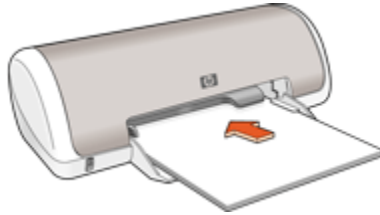
Guidelines

Do not exceed the paper tray capacity: Up to 80 sheets.

Preparing to print

1. Slide the paper guide to the left.
2. Place the paper with the side to be printed on facing down in the tray, and then push it into the printer until it stops.

The paper will extend over the edge of the tray.



3. Slide the paper guide firmly against the edge of the paper.

Printing

1. If necessary, open the [Page Setup](#) dialog box and set the paper size and orientation options.
2. Open the [Print](#) dialog box.
3. Select the **Paper Type/Quality** panel, and then specify the following settings:
 - **Paper Type:** The appropriate paper type
 - **Print Quality:** **Normal**
4. Select any other print settings that you want, and then click **Print**.

7.2 Letters

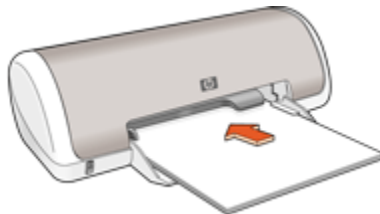
Guidelines

- For help printing on an envelope, see the [envelopes](#) page.
- Do not exceed the paper tray capacity: Up to 80 sheets.

Preparing to print

1. Slide the paper guide to the left.
2. Place the paper with the side to be printed on facing down in the tray, and then push it into the printer until it stops.

The paper will extend over the edge of the tray.



3. Slide the paper guide firmly against the edge of the paper.

Printing

1. If necessary, open the [Page Setup](#) dialog box and set the paper size and orientation options.
2. Open the [Print](#) dialog box.
3. Select the **Paper Type/Quality** panel, and then specify the following settings:
 - **Paper Type:** The appropriate paper type
 - **Print Quality:** **Normal** or **Best**
4. Select any other print settings that you want, and then click **Print**.

7.3 Documents

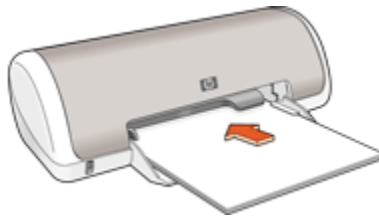
Guidelines

- Do not exceed the paper tray capacity: Up to 80 sheets.

Preparing to print

1. Slide the paper guide to the left.
2. Place the paper with the side to be printed on facing down in the tray, and then push it into the printer until it stops.

The paper will extend over the edge of the tray.



3. Slide the paper guide firmly against the edge of the paper.

Printing

1. If necessary, open the [Page Setup](#) dialog box and set the paper size and orientation options.
2. Open the [Print](#) dialog box.
3. Select the **Paper Type/Quality** panel, and then specify the following settings:
 - **Paper Type:** The appropriate paper type

- **Print Quality: Normal or Best**
4. Select any other print settings that you want, and then click **Print**.

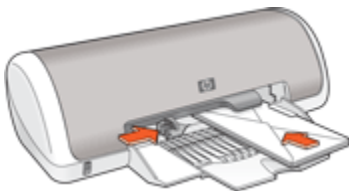
7.4 Envelopes

Guidelines

- Avoid using envelopes that have the following features:
 - Have clasps
 - Have thick, irregular, or curled edges
 - Are shiny or embossed
 - Are wrinkled, torn, or otherwise damaged
- Align the envelope edges before inserting them in the paper tray.
- Do not exceed the paper tray capacity: Up to 10 envelopes.

Preparing to print

1. Slide the paper guide to the left.
2. Place the envelopes, with the side to be printed on facing down and the flap to the left, in the paper tray and to the right. Push the envelopes into the printer until they stop.



3. Slide the paper guide firmly against the edge of the envelopes.

Printing

1. If necessary, open the [Page Setup](#) dialog box and set the paper size and orientation options.
2. Open the [Print](#) dialog box.
3. Select the **Paper Type/Quality** panel, and then specify the following settings:
 - **Paper Type:** The appropriate paper type
 - **Print Quality: Normal or Best**
4. Select any other print settings that you want, and then click **Print**.

7.5 Labels

Guidelines

- Use only labels that are designed specifically for inkjet printers.
- Use only full sheets of labels.
- Verify that the labels are not sticky, wrinkled, or pulling away from the protective backing.
- Do not exceed the paper tray capacity: Up to 15 sheets of labels (use only letter-size or A4-size sheets).

Preparing to print

1. Slide the paper guide to the left.
2. Fan the edges of the label sheets to separate them, and then align the edges.
3. Place the label sheets with the label side facing down in the tray, and then push the sheets into the printer until they stop.

The sheets will extend over the edge of the tray.



4. Slide the paper guide firmly against the edge of the sheets.

Printing

1. If necessary, open the [Page Setup](#) dialog box and set the paper size and orientation options.
2. Open the [Print](#) dialog box.
3. Select the **Paper Type/Quality** panel, and then specify the following settings:
 - **Paper Type:** The appropriate paper type
 - **Print Quality:** **Normal** or **Best**
4. Select any other print settings that you want, and then click **Print**.

7.6 Brochures

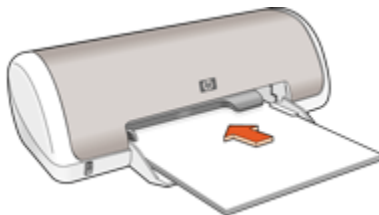
Guidelines

- For great results, use HP Brochure & Flyer Paper.
- Do not exceed the paper tray capacity: Up to 30 sheets.

Preparing to print

1. Slide the paper guide to the left.
2. Place the paper with the side to be printed on facing down in the tray, and then push it into the printer until it stops.

The paper will extend over the edge of the tray.



3. Slide the paper guide firmly against the edge of the paper.

Printing

1. If necessary, open the [Page Setup](#) dialog box and set the paper size and orientation options.
2. Open the [Print](#) dialog box.
3. Select the **Paper Type/Quality** panel, and then specify the following settings:
 - **Paper Type:** The appropriate brochure paper type
 - **Print Quality:** **Normal**, **Best**, or **Maximum dpi**
4. Select any other print settings that you want, and then click **Print**.

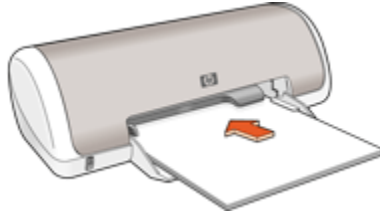
7.7 Greeting cards

Guidelines

- Unfold prefolded cards, and then place them in the paper tray.
- For great results, use HP Greeting Card Paper.
- Do not exceed the paper tray capacity: Up to 20 cards.

Preparing to print

1. Slide the paper guide to the left.
2. Fan the edges of the greeting cards to separate them, and then align the edges.
3. Place the greeting cards, with the side to be printed on facing down, in the paper tray. Push the cards into the printer until they stop.



4. Slide the paper guide firmly against the edge of the paper.

Printing

1. If necessary, open the [Page Setup](#) dialog box and set the paper size and orientation options.
2. Open the [Print](#) dialog box.
3. Select the **Paper Type/Quality** panel, and then specify the following settings:
 - **Paper Type:** The appropriate greeting card paper type
 - **Print Quality:** **Normal**, **Best**, or **Maximum dpi**
4. Select any other print settings that you want, and then click **Print**.

7.8 Transparencies

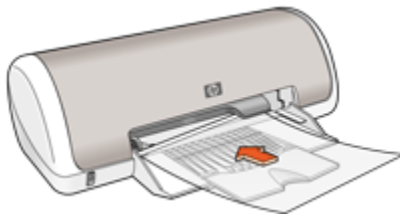
Guidelines

- For great results, use HP Premium Inkjet Transparency Film.
- Do not exceed the paper tray capacity: Up to 20 transparencies.

Preparing to print

1. Slide the paper guide to the left.
2. Place the transparencies, with the side to be printed on facing down and the adhesive strip toward the printer, in the tray.

The transparencies will extend over the edge of the tray.



3. Carefully push the transparencies into the printer until they stop so that none of the adhesive strips catch on one another.
4. Slide the paper guide firmly against the edge of the transparencies.

Printing

1. If necessary, open the [Page Setup](#) dialog box and set the paper size, scaling, or orientation options.
2. Open the [Print](#) dialog box.
3. Select the **Paper Type/Quality** panel, and then specify the following settings:
 - **Paper Type:** The appropriate transparency film type
 - **Print Quality:** **Normal**, **Best**, or **Maximum dpi**.
4. Select any other print settings that you want, and then click **Print**.

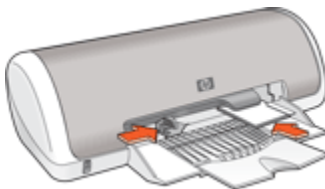
7.9 Index cards and other small media

Guidelines

- Use only cards and small media that meet the printer's paper-size specifications. For specifications, see the reference guide that came with the printer.
- Do not exceed the paper tray capacity: Up to 20 cards.

Preparing to print

1. Slide the paper guide to the left.
2. Place the cards, with the side to be printed on facing down and the short edge pointing towards the printer, in the tray and to the right. Push the cards into the printer until they stop.



3. Slide the paper guide firmly against the edge of the paper.

Printing

1. Open the [Page Setup](#) dialog box, and then select the following settings:
 - **Paper Size:** The appropriate paper size

Note: To print a borderless card, click the borderless photo size that matches the card size.

 - **Orientation:** The appropriate orientation
2. Click **OK**.
3. Open the [Print](#) dialog box.
4. Select the **Paper Type/Quality** panel, and then select the following settings:
 - **Paper Type:** The appropriate paper type
 - **Print Quality:** **Normal**, **Best**, or **Maximum dpi**
5. If you want to use them, set the [HP digital photography options](#).
6. Select any other print settings that you want, and then click **Print**.

Note: If an out-of-paper message appears, verify that the cards are positioned correctly in the paper tray.

7.10 Iron-on transfers

Guidelines

- Use HP Iron-on Transfers for great results.
- When printing a mirror image, the text and the pictures are horizontally reversed from what appears on the computer screen.

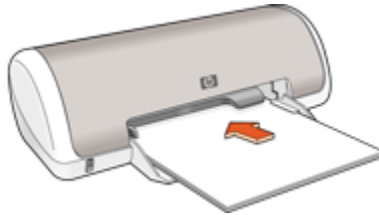


- Do not exceed the paper tray capacity: Up to 10 iron-on transfer papers.

Preparing to print

1. Slide the paper guide to the left.
2. Place the iron-on transfer paper, with the side to be printed on facing down, in the paper tray, pushing the paper into the printer until it stops.

The paper will extend over the edge of the tray.



3. Slide the paper guide firmly against the edge of the paper.

Printing

1. Open the [Page Setup](#) dialog box, and then select the following settings:

Note: Some iron-on transfer paper types do not require you to print a mirror image. Consult the instructions that came with your iron-on transfer paper to see if printing a mirror image is required.

- **Paper Size:** A4 or US Letter
 - **Mirror Image:** Selected
2. Click **OK**.
 3. Open the [Print](#) dialog box.
 4. Select the **Paper Type/Quality** panel.
 5. In the **Paper Type** drop-down list, click the appropriate paper type.
 6. For **Print Quality**, select **Normal** or **Best**.
 7. Select any other print settings that you want, and then click **Print**.

8 Printing tips

Save time

- Print from [back to front](#).
- Print [collated copies](#).

Save money

- Use [HP Everyday Photo Paper](#) to save money and ink when printing photos.

Enhance the quality of printouts

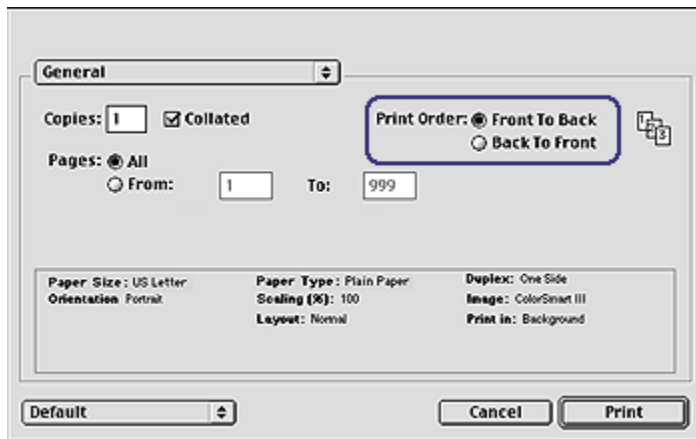
- Select the correct [paper type](#).
- Select the correct [print quality](#).
- [Resize](#) the document as needed.

8.1 Setting the print order

Setting the print order determines the order in which your document is printed. Frequently, it is convenient to have the first page of a document printed last so that the complete document is lying face-up in the paper tray.

Follow these steps to set the print order:

1. Open the [Print](#) dialog box.
2. Select the **General** panel.



3. Select one of the following options for the **Print Order**:
 - **Front to back**: Prints the first page of the document first.

- **Back to front:** Prints the first page of the document last. This is the appropriate setting for most print jobs.
4. Select any other print settings that you want, and then click **Print**.

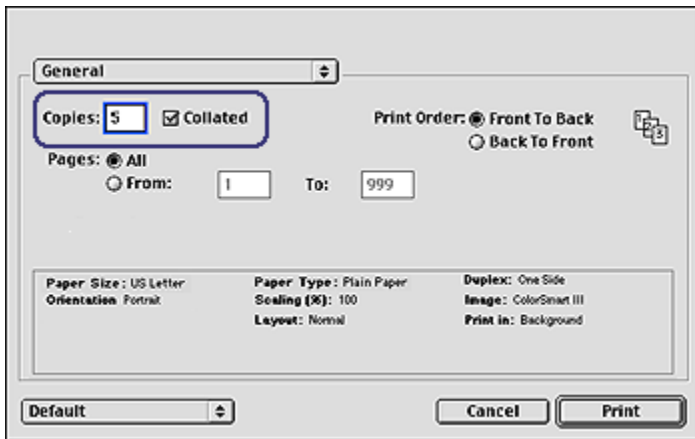
8.2 Printing collated copies

If you are printing several copies of a document at one time, use collation so that you do not have to re-arrange the copies after printing.

Note: Some software programs do not allow you to use the printer software to specify the number of copies to print. If the program that you are using allows you to specify the number of copies to print, then specify the number of copies to print in the application.

Follow these steps to print collated copies:

1. Open the **Print** dialog box.
2. Select the **General** panel.



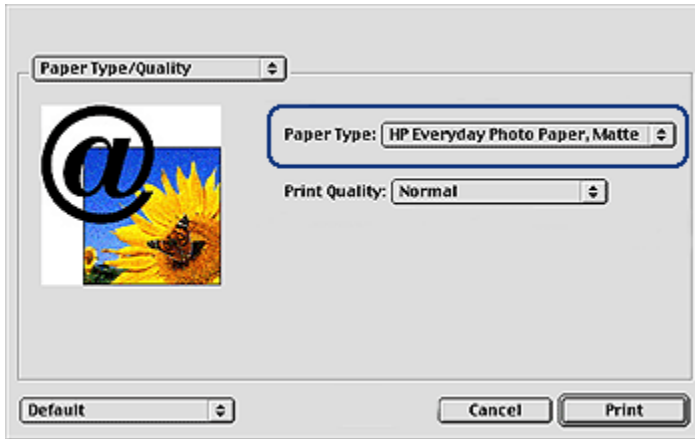
3. In the **Copies** box, type the number of copies that you want to print.
4. Select the **Collated** check box.
5. Select any other print settings that you want, and then click **Print**.

8.3 Selecting a paper type

When printing a higher-quality document, it is recommended that you select a specific paper type.

Follow these steps to select a specific paper type:

1. Open the **Print** dialog box.
2. Select the **Paper Type/Quality** panel.



3. In the **Paper Type** drop-down list, click the specific paper type.
4. Select any other print settings that you want, and then click **Print**.

8.4 Selecting a print quality

Follow these steps to select a print quality from the printer software:

1. Open the **Print** dialog box.
2. Select the **Paper Type/Quality** panel.



3. Select one of the following options from the **Print Quality** drop-down list:

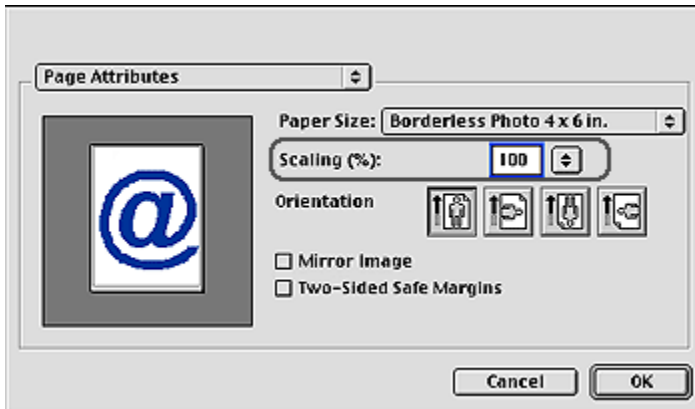
- **FastDraft:** Prints at the fastest printing speed.
- **Fast Normal:** Prints more quickly than the Normal mode and at a higher print quality than FastDraft.
- **Normal:** Provides the best balance between print quality and speed. This is the appropriate setting for most documents.
- **Best:** Provides high-quality printing.
- **Maximum dpi:** Provides the highest quality printing but requires longer to print than Best.

8.5 Resizing a document

Use this feature to shrink or enlarge printed text and graphics without changing the paper size.

Follow these steps to shrink or enlarge text and graphics:

1. Open the **Page Setup** dialog box.



2. In the **Scaling (%)** box, type the percentage by which you want to shrink or enlarge the document.
 - Type a number from 25 to 99 to reduce a document image.
 - Type a number from 101 to 400 to enlarge a document image.
3. Click **OK**, and then print the document.

9 Printer software

- [Print settings](#)
- [Page Setup dialog box](#)
- [Print dialog box](#)
- [Managing the printer](#)
- [Viewing and changing the status of a print job](#)
- [Printing from the computer desktop](#)

9.1 Print settings

The printer is controlled by software that is installed on your computer. Use the printer software, known as the *printer driver*, to change the print settings for a document.

To specify the paper size, scaling, and orientation for a document, use the [Page Setup](#) dialog box.

To specify other print settings for a document, and to send the document to the printer, use the [Print](#) dialog box.

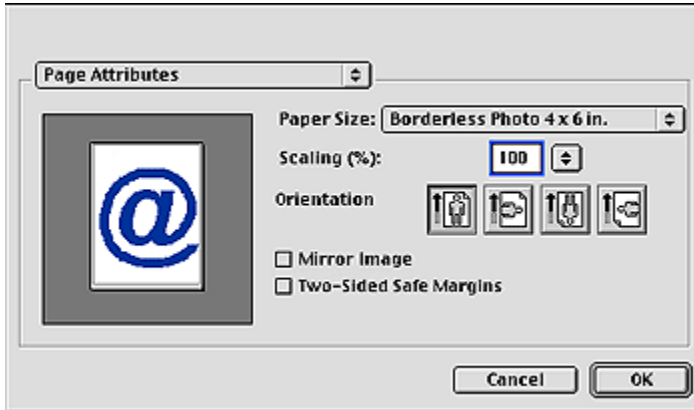
Mac OS X Classic

Mac OS X Classic is a Mac OS X feature that allows applications that were built for Mac OS 9.x to run on a Mac OS X computer. Mac OS X Classic applications have a Mac OS 9.x interface.

9.2 Page Setup dialog box

Use the **Page Setup** dialog box to modify the layout of a document.

To open the **Page Setup** dialog box, open the software program that you used to create the document, click **File**, and then click **Page Setup**.



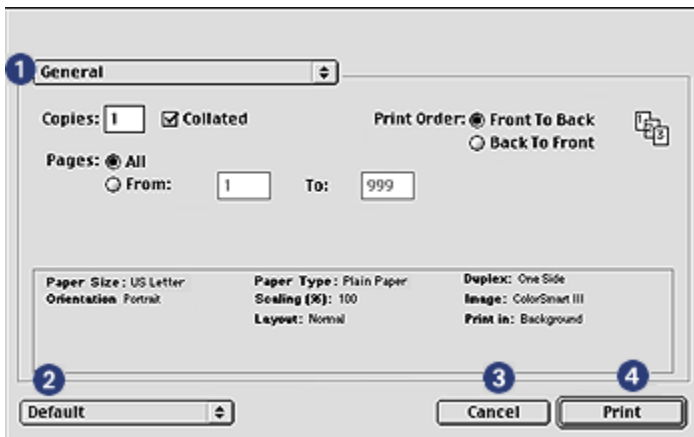
You can use the **Page Setup** dialog box to do the following tasks:

- Set the paper size for a document.
- [Resize](#) a document.
- Specify the document orientation.

9.3 Print dialog box

Use the **Print** dialog box to modify print settings for the document that you are printing. The options that appear depend on the panel that you selected.

To open the **Print** dialog box, open the document you want to print, click **File**, and then click **Print**.



Use the menu and buttons for these functions:

1. **Panel Menu:** Toggles between print setting panels and an application-specific panel.
2. **Default:** Select one of the following options:
 - **Save Settings:** Save the current print settings without printing the document.
 - **Revert to Defaults:** Restore the default print settings.
3. **Cancel:** Close the dialog box without saving the new settings.
4. **Print:** Click this option to print the document.

9.4 Managing the printer

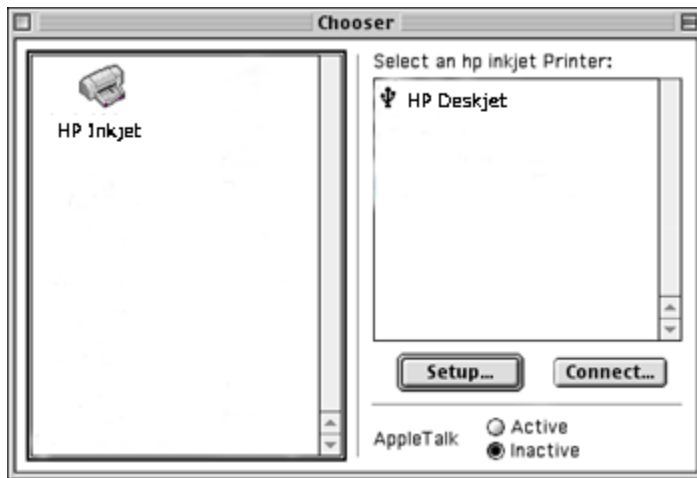
Managing the printer includes the following tasks:

- [Choosing the printer](#)
- [Setting the printer as your default printer](#)
- [Checking the status of the printer](#)

Choosing the printer

Follow these steps to choose the printer:

1. Select **Chooser** from the Apple menu.
2. Click the HP printer icon on the left side of the **Chooser** dialog box.



3. Click the HP printer name on the right side of the **Chooser** dialog box.

4. Close the **Chooser**.

Setting the printer as your default printer

Setting the printer as your computer's default printer will automatically route all print jobs to the printer.

You can select another printer for a particular document; however, switching printers might affect a document's formatting and pagination. If you select a printer, always check the document for changes in formatting and pagination before printing.

Follow these steps to set the printer as your computer's default printer:

1. Use **Chooser** to select the printer.
2. Do one of the following:
 - Click the menu bar printer icon at the top of the screen, and then select the printer name.
 - Click the control strip printer icon, and then select the printer name.
 - Click the desktop printer icon, and then click **Set Default Printer** in the **Printing** menu.

Checking the status of the printer

The printer desktop icon shows you the status of the printer:

Icon Meaning



Printer is idle and set as the default printer.



Printer is idle and not set as the default printer.



Printing on the default printer.



Printing stopped on the default printer.



Error on the default printer.



The printer driver is not available.

9.5 Viewing and changing the status of a print job

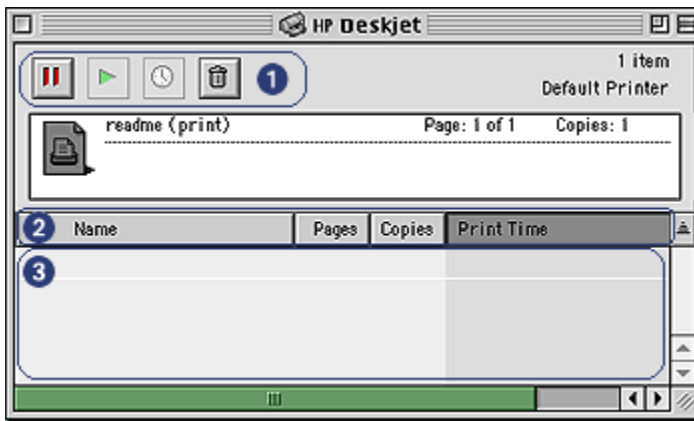
When printing a document with background printing, use the **Print Status** dialog box to see the status of the document as it is printing.

Opening the Print Status dialog box

Double-click the HP printer icon on the desktop to open the **Print Status** dialog box.

Using the Print Status dialog box

The following options are available in the **Print Status** dialog box:



1. **Control Buttons:** Select a print job in the print queue, and then click one of the following buttons to control printing:



Pause a print job.



Restart printing.



Set the print time.



Delete a print job.

2. **Column Titles:** Click a column title to sort print jobs.
3. **Print Queue:** Select a print job, and then drag it to a new position in the print queue.

9.6 Printing from the computer desktop

Desktop printing is useful when you want to print a number of documents at the same time or print a document that is formatted for a particular printer.

Use one of the following methods to print from the desktop:

- Drag the icons for the documents that you want to print to the printer icon on the desktop.
- Select the icons for the documents that you want to print, click **File**, and then click **Print**. Select the options that you want from the **Print** dialog box, and then click **Print**.

10 Maintenance

- Installing print cartridges
- Aligning print cartridges
- Automatically cleaning print cartridges
- Manually cleaning print cartridges
- Printing a test page
- View estimated ink levels
- Removing ink from skin and clothing
- Maintaining print cartridges
- Maintaining the printer body
- Using the HP Inkjet Toolbox

10.1 Installing print cartridges

Print cartridges

Always install the tri-color print cartridge in the *left* print cartridge cradle compartment.

Install the black print cartridge in the *right* print cartridge cradle compartment.

Replacing print cartridges

When buying print cartridges, look for the print cartridge selection number.

You can find the selection number in these places:

- Selection number label: Look at the label on the print cartridge that you are replacing.



1. Selection number label

- Printer documentation: For a list of print cartridge selection numbers, see the reference guide that came with the printer.
- HP Inkjet Toolbox: Open the [HP Inkjet Toolbox](#), and then select the **Supplies** panel.

If a print cartridge runs out of ink, the printer can operate in the [ink-backup mode](#).

For information about installing a print cartridge, see the [print cartridge installation page](#).

Ink back-up mode

The printer can operate with only one print cartridge installed. For more information, see the [ink back-up mode page](#).

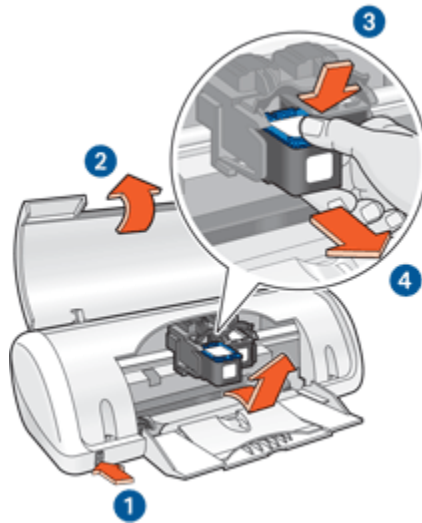
Installation instructions

To install a print cartridge:

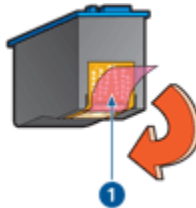
1. Press the **Power** button to turn on the printer.
2. Open the printer cover.

The cradle moves to the center of the printer.

3. Push down on the print cartridge and slide it out of the print cartridge cradle.



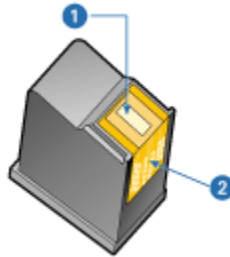
1. Press the Power button.
 2. Lift the printer cover.
 3. Push down on the print cartridge.
 4. Slide the print cartridge out of the cradle.
4. Remove the replacement print cartridge from its packaging and carefully remove the plastic tape. Hold the print cartridge so that the copper strip is on the bottom and facing toward the printer.



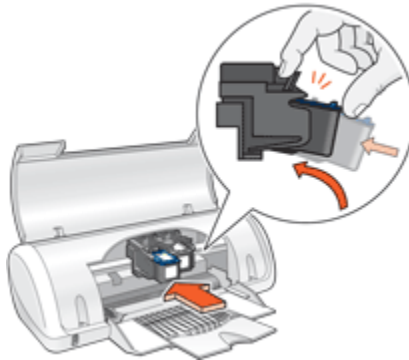
1. Remove the pink tape only.



Caution: Do not touch the print cartridge ink nozzles or copper contacts. Touching these parts will result in clogs, ink failure, and bad electrical connections. Do not remove the copper strips. They are required electrical contacts.



1. Ink nozzles
2. Copper contacts
5. Slide the print cartridge firmly into the cradle at a slight upward angle until you feel resistance.



6. Push the cartridge into the cradle.
You hear a snap when the print cartridge is correctly positioned.
7. Close the printer cover.
8. **Calibrate** the printer for optimum print quality.

For information about storing print cartridges, see the [print cartridge storage](#) page.

For information about recycling empty print cartridges, see the [print cartridge recovery](#) page.



Warning: Keep both new and used print cartridges out of the reach of children.

10.2 Aligning print cartridges

The printer automatically aligns the print cartridges after a new print cartridge is installed. You can also align the print cartridges at other times to ensure optimal print quality.

To calibrate the print cartridges:

1. Load letter-size or A4-size plain white paper in the In tray.
2. Open the [HP Inkjet Toolbox](#).
3. Select the **Calibrate** panel.
4. Click the **Align** button, and then follow the onscreen instructions.

10.3 Automatically cleaning print cartridges

If your printed pages are missing lines or dots, or if they contain ink streaks, the print cartridges might be [low on ink](#) or might need to be cleaned.

If the print cartridges are not low on ink, follow these steps to clean the print cartridges automatically:

1. Open the [HP Inkjet Toolbox](#).
2. Select the **Clean** panel.
3. Click the **Clean** button, and then follow the onscreen instructions.



Caution: Clean print cartridges only when necessary. Unnecessary cleaning wastes ink and shortens the life of the cartridge.

10.4 Manually cleaning print cartridges

If the printer is used in a dusty environment, a small amount of debris might accumulate inside the case. This debris can include dust, hair, or carpet or clothing fibers. When debris gets on the print cartridges and cradle, ink streaks and smudges might appear on printed pages. Ink streaking is easily corrected by manually cleaning the cartridges and cradle.

Gathering cleaning supplies

You will need the following items to clean the print cartridges and cradle.

- Distilled water
- Cotton swabs or other soft, lint-free material that will not stick to the cartridges

Be careful not to get [ink on your hands or clothing](#) as you clean.

Preparing to clean

1. Press the **Power** button to turn on the printer, and then raise the printer cover. The cradle moves to the center of the printer.
2. Disconnect the power cord from the back of the printer.
3. Remove the print cartridges and place them on a piece of paper with the nozzle plate facing up.



1. Nozzle plate



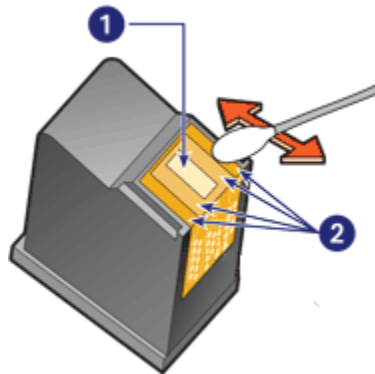
Caution: Do not leave the print cartridges outside the printer for more than 30 minutes.

Cleaning instructions

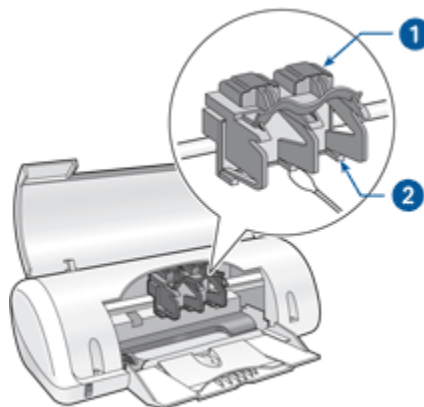
1. Lightly moisten a cotton swab with distilled water and squeeze any excess water from the swab.
2. Wipe the face and edges of the first print cartridge with the cotton swab.



Caution: Do not wipe the nozzle plate. Touching the ink nozzles will result in clogs, ink failure, and bad electrical connections.



1. Nozzle plate
2. Face and edges of print cartridge
3. Inspect the face and edges of the print cartridge for fibers.
Repeat steps 1 and 2 if fibers are still present.
4. Repeat steps 1 through 3 for the second cartridge.
5. Wipe the underside of the print cartridge cradle walls with clean, moistened cotton swabs.
Repeat this process until no ink residue or dust appears on a clean swab.



1. Print cartridge cradle
2. Print cartridge cradle walls
6. Insert the print cartridges in the printer, and then close the printer cover.
7. Connect the power cord to the back of the printer.
8. Print a [test page](#).

9. Repeat the cleaning procedure if ink streaks continue to appear on printed pages.

10.5 Printing a test page

Follow these steps to print a test page:

1. Open the [HP Inkjet Toolbox](#).
2. Select the **Test** panel.
3. Click the **Print a test page** button, and then follow the onscreen instructions.

10.6 View estimated ink levels

Follow these steps to view the estimated ink levels of the print cartridges that are installed in the printer:

1. Open the [HP Inkjet Toolbox](#).
2. Select the **Ink Levels** panel.

10.7 Removing ink from skin and clothing

Follow these instructions to remove ink from skin and clothing:

Surface	Remedy
Skin	Wash the area with an abrasive soap.
White fabric	Wash the fabric in cold water and use chlorine bleach.
Color fabric	Wash the fabric in cold water and use sudsy ammonia.



Caution: Always use cold water to remove ink from fabric. Warm or hot water can set the ink into the fabric.

10.8 Maintaining print cartridges

The following tips will help maintain HP print cartridges and ensure consistent print quality:

- Keep all print cartridges in their sealed packages until they are needed. Print cartridges should be stored at room temperature (15 to 35 degrees C or 59 to 95 degrees F).

- Do not remove the plastic tape covering the ink nozzles until you are ready to install the print cartridge in the printer. If the plastic tape has been removed from the print cartridge, do not attempt to reattach it. Reattaching the tape damages the print cartridge.

10.9 Maintaining the printer body

Because the printer ejects ink onto the paper in a fine mist, ink smudges will eventually appear on the printer case and adjacent surfaces. To remove smudges, stains, or dried ink from the exterior of the printer, use a soft cloth moistened with water.

When cleaning your printer, keep these tips in mind:

- Do not clean the interior of the printer. Keep all fluids away from the interior.
- Do not use household cleaners or detergent. In the event that a household cleaner or detergent is used on the printer, wipe the printer's exterior surfaces with a soft cloth that has been moistened with water.
- Do not lubricate the support rod that the print cartridge cradle uses to slide back and forth. Noise is normal when the cradle moves back and forth.

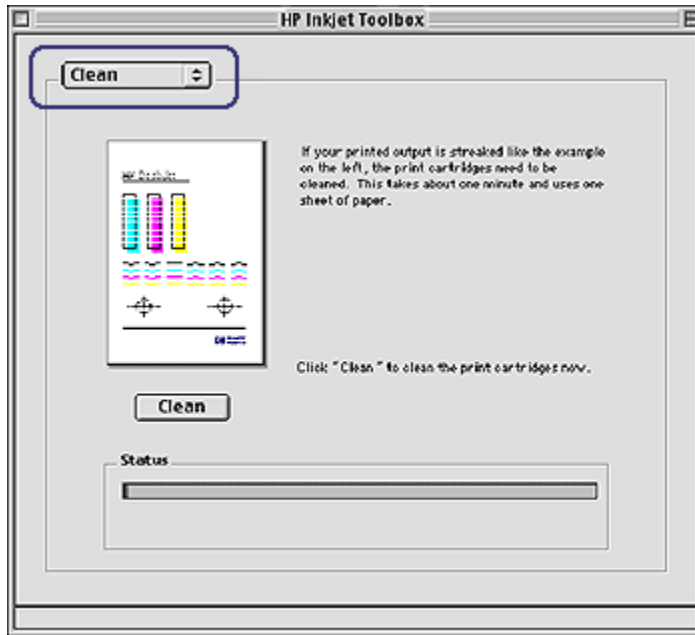
10.10 Using the HP Inkjet Toolbox

The **HP Inkjet Toolbox** contains tools to calibrate the printer, clean the print cartridges, print a test page, and find Web site support information.

Opening the HP Inkjet Toolbox

1. Double-click the **Macintosh HD** icon on the desktop.
2. Double-click **Applications**, double-click **Utilities**, double-click **HP**, and then double-click **HP Printer Selector**.
3. Click **Local**.
4. Select the printer, and then click the **Utilities** button.

HP Inkjet Toolbox panels



Select the appropriate panel to view HP Inkjet Toolbox options:

- **WOW!:** Prints a sample page to view the output quality of the printer.
- **Test:** Prints a test page to confirm communication with printer.
- **Clean:** Cleans the print cartridges.
- **Ink Levels:** Provides estimated ink levels.
- **Calibrate:** Calibrates the print cartridges.
- **Supplies:** Provides print cartridge selection numbers.
- **Support:** Provides access to the HP Web site where you can find support for the printer and information about HP products and supplies.
- **Register:** Accesses the HP Web site to register the printer.

11 Troubleshooting

- Printer is not printing
- Paper jam
- Paper problems
- Print quality is poor
- Document is misprinted
- Photos are not printing correctly
- Borderless printing problems
- Error messages
- Power light is flashing
- Document prints slowly
- If you continue to have problems

11.1 Printer is not printing

Verify the following

- Printer is connected to the power source.
- Cable connections are secure.
- Printer is turned on.
- Print cartridges are [correctly installed](#).
- Paper or other media is correctly loaded in the paper tray.
- Printer cover is closed.
- Rear access door is attached.

Check the power light

If the Power light is flashing, there might exist an error.

See [Power light is flashing](#) for more information.

Check the printer cable connection

If the printer cable is attached to a USB hub, a printing conflict might exist. Use one of these methods for solving the conflict:

- Attach the printer USB cable directly to your computer.
- When printing, do not use other USB devices that are attached to the hub.

If the printer does not turn on

The printer might have drawn too much power.

1. Disconnect the power cord from the electrical outlet.
2. Wait approximately 10 seconds.
3. Reconnect the power cord.
4. Press the **Power** button to turn on the printer.

If the printer still does not turn on, try the following solutions:

- Plug the printer into a different electrical outlet.
- Plug the printer directly into an electrical outlet rather than into a surge protector.

If the printer still does not print

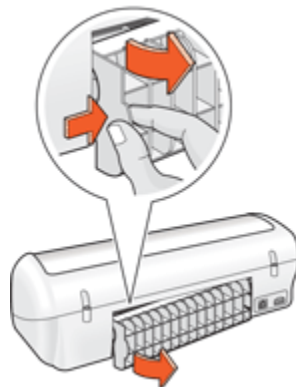
Select the topic below that best describes the problem:

- [Paper jam](#)
- [Out of paper message](#)

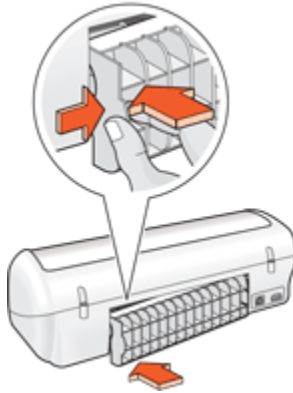
11.2 Paper jam

Follow each of these steps until the paper jam is cleared.

1. Remove the paper from the paper tray.
2. If you are printing labels, verify that a label did not become detached from the label sheet while passing through the printer.
3. Remove the rear access door. Press the handle to the right, and then pull out the door.



4. Remove the paper jam from the back of the printer, and then replace the rear access door.



5. Reload paper in the paper tray.
6. Reprint the document.

11.3 Paper problems

Printer prints on multiple sheets at once

Paper weight

The printer might print on multiple sheets of paper at once if the paper is under the recommended paper weight. Use paper that meets the recommended paper weight. For paper weight specifications, see the reference guide that came with the printer.

Paper is loaded improperly

The printer might print on multiple sheets of paper at once if the paper is loaded too far toward the back of the printer. Reload paper into the paper tray, pushing the paper until you feel resistance.

The printer also might print on multiple sheets if different paper types are loaded in the printer. For example, photo paper might be mixed with plain paper. Empty the paper tray and load only the paper type that is appropriate for the document that you are printing.

Other paper problems

- For information on clearing a paper jam, see the [paper jam](#) page.
- If an out of paper message appears, see the [error messages](#) page.

11.4 Print quality is poor

Streaks and missing lines

If your printed pages are missing lines or dots or if streaks appear, the print cartridges may be **low on ink** or may need to be **cleaned**.

Print is faded

1. Verify that neither of the print cartridges is **low on ink**.

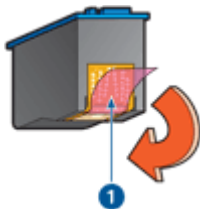
If a print cartridge is low on ink, consider **replacing the print cartridge** when the print quality lessens.

If the print cartridge is not low on ink, **clean the print cartridge**.

2. Verify that a black print cartridge is installed.

If the black text and images on your printouts are faded, you might be printing with only the tri-color print cartridge. Insert a black print cartridge, in addition to the tri-color print cartridge, for optimal black print quality.

3. Verify that the protective piece of plastic tape has been removed from the print cartridges.



1. Plastic tape

4. Consider selecting a higher print quality.

Increase the ink density

1. Open the **Print** dialog box.
2. Select the **Ink** panel.
3. Move the **Ink Density** slider toward **Heavy**.
4. Click **Print**.

Blank pages print

- The protective piece of plastic tape might still be attached to the print cartridges. Verify that the plastic tape has been removed from the print cartridges.

- The print cartridges might be **out of ink**. Replace one or both empty print cartridges.

11.5 Document is misprinted

Text and images are misaligned

If the text and images on your printouts are misaligned, then **align** the print cartridges.

Document is printed off-center or at an angle

1. Verify that only one type of paper is placed in the paper tray, and that the paper has been placed in the tray correctly.
2. Verify that the paper guide fits firmly against the edge of paper.
3. Reprint the document.

Envelope is printed at an angle

1. Slide the flap inside the envelope before loading it in the paper tray.
2. Confirm that the paper guide fits firmly against the edge of the envelope.
3. Reprint the envelope.

Parts of the document are missing or printed in the wrong place

Open the **Page Setup** dialog box and verify the following settings:

Panel	Setting
Page Attributes	Paper Size: The appropriate paper size Orientation: Verify the appropriate orientation

Printout does not reflect selected print settings

Some software applications allow you to set certain print settings. The software application's print settings might differ from the printer settings that you specified in the **Print** or **Page Setup** dialog boxes.

Change the appropriate print settings within the software application to match the settings on the **Print** or **Page Setup** dialog boxes.

11.6 Photos are not printing correctly

Check the paper tray

1. Verify that the photo paper is placed in the paper tray with the side to be printed on facing down.
2. Slide the paper forward until it stops.
3. Slide the paper guide firmly against the edge of the paper.

Check the printer settings

1. Open the [Page Setup](#) dialog box and verify the following settings:

Panel	Setting
Page Attributes	Paper Size: The appropriate paper size Orientation: The appropriate orientation

2. Open the [Print](#) dialog box and verify the following settings:

Panel	Setting
Paper Type/Quality	Paper Type: The appropriate photo paper type Print Quality: Best or Maximum dpi

11.7 Borderless printing problems

Guidelines

When printing borderless printouts, follow these guidelines:

- Open the file in a software application and assign the image size. Ensure that the size corresponds to the paper size on which you want to print the image.
- Verify that the paper size that is specified in the [Page Setup](#) dialog box matches the size of the paper that is loaded in the paper tray.
- Select the appropriate paper type in the **Paper Type/Quality** panel.
- Do not print borderless documents in [ink-backup mode](#). Always have two print cartridges installed in the printer.

Edge of the photograph is faded



Verify that the photo paper is not curled. If the photo paper is curled, place the paper in a plastic bag and gently bend it the opposite direction of the curl until the paper lies flat. If the problem persists, use photo paper that is not curled.

For instructions about preventing photo paper from curling, see the [photo paper storage](#) page.

Image is printed at an angle



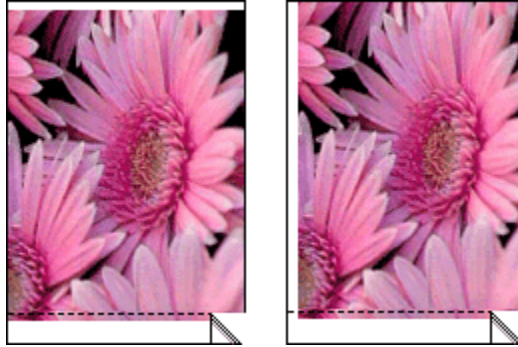
Follow these steps if the image is printed at an angle:

1. Remove all paper from the paper tray.
2. Load the photo paper correctly in the paper tray.
3. Verify that the paper guide fits firmly against the edge of the paper.

Printout has an unwanted border

The following conditions can create an unwanted border.

For small photo paper

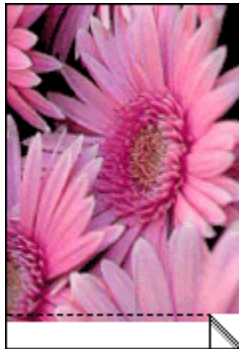


If the printout has an unwanted border, then try the following solutions:

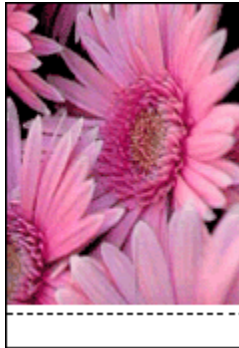
- [Align the print cartridges.](#)
- Verify that the software application you are using supports borderless printing.

For small photo paper with a tear-off tab

If the border appears below the tear-off tab, then remove the tab.



If the border appears above the tear-off tab, then [align the print cartridges.](#)



11.8 Error messages

Out of paper message

Follow the appropriate steps for the condition that exists.

If the paper tray is loaded

1. Verify the following:
 - A sufficient amount of paper is loaded in the paper tray (at least ten sheets).
 - The paper tray is not overly full.
 - The paper stack is touching the back of the paper tray.
2. Slide the paper guide so that it fits firmly against the edge of the paper.
3. Click **Continue** to resume printing.

If the paper tray is empty

1. Load paper in the paper tray.
2. Push the paper forward until it stops.
3. Slide the paper guide so that it fits firmly against the edge of the paper.
4. Click **Continue** to resume printing.

The error message 'problem with print cartridges' appears

One or both of the print cartridges is either low on ink, improperly installed, or malfunctioning.

To solve the problem, remove the print cartridges, then reinsert them. If the problem continues, [replace](#) one or both print cartridges.

An error message appears while the Power light is flashing

Read the error message explaining the problem and its solution.

For more information, see [Power light is flashing](#).

11.9 Power light is flashing

- If the Power light is **on**, the printer is either printing or ready to print.
- If the Power light is **off**, the printer is off.
- If the Power light is **flashing**, see the following information.



1. Power light

What the flashing light means

The Power light can flash for several reasons:

- The printer cover is open.
- The printer is out of paper.
- There is a problem with the printer, such as a [paper jam](#) or a problem with a print cartridge.

If an error message appears

Read the error message explaining the problem and its solution.

11.10 Documents print slowly

Several variables can slow the printer's performance.

Multiple software applications are open

The computer does not have sufficient resources for the printer to print at its optimum speed.

To increase printer speed, close all unnecessary software programs when printing.

Complex documents, graphics, or photographs are printing

Documents containing graphics or photographs print slower than text documents.

Best or Maximum dpi print mode is selected

The printer prints slower when **Best** or **Maximum dpi** is selected as the print quality. To increase the printer speed, select a different print quality mode.

Printer driver is outdated

An outdated printer driver may be installed.

For information about updating the printer driver, visit the HP Web site at www.hp.com/support.

Printer is in ink-backup mode

The printer might print more slowly if it is in [ink-backup mode](#).

To increase the print speed, use two print cartridges in the printer.

Computer does not meet system requirements

If your computer does not have enough RAM or does not have a large amount of free space on the hard drive, then the printer processing time will be longer.

1. Verify that the computer hard disk space, RAM, and processor speed meet the system requirements.

For the system requirements, see the reference guide that came with the printer.

2. Make space available on the hard drive by deleting unneeded files.

11.11 If you continue to have problems

If you continue to have problems after investigating the troubleshooting topics, turn off your computer and then restart it.

If you still have problems after restarting your computer, go to HP customer support at www.hp.com/support.

12 Specifications

- [Printer specifications](#)
- [Environmental statement](#)
- [Print cartridge recovery](#)

12.1 Printer specifications

See the reference guide that came with your printer for complete printer specifications, including the following information:

- Types, sizes, and weights of paper and other printing media that can be used with your printer
- Print speeds and resolutions
- Power requirements

12.2 Environmental statement

Hewlett-Packard continuously improves the design processes of its deskjet printers to minimize the negative impact on the office environment and on the communities where printers are manufactured, shipped, and used.

Reduction and elimination

Paper use: This equipment is suitable for using recycled paper (in accordance with EN 12281:2002).

Recycled paper: All paper documentation for this printer is printed on recycled paper.

Ozone: Ozone-depleting chemicals such as CFCs have been eliminated from Hewlett-Packard's manufacturing processes.

Recycling

Design for recycling has been incorporated into this printer. The number of materials has been kept to a minimum while ensuring proper functionality and reliability. Dissimilar materials have been designed to separate easily. Fasteners and other connections are easy to locate, access, and remove using common tools. High-priority parts have been designed to gain access to quickly for efficient disassembly and repair.

Printer packaging: The packaging materials for this printer have been selected to provide maximum protection for the least cost possible, while attempting to minimize environmental impact and facilitate recycling. The rugged design of the HP Deskjet printer assists in minimizing both packaging materials and damage rates.

Plastic parts: All major plastics and plastic parts are marked according to international standards. All plastic parts used in the printer housing and chassis are technically recyclable and all use a single polymer.

Product longevity: To ensure the longevity of your HP Deskjet printer, HP provides the following:

- **Extended warranty:** Details can be found in the reference guide that came with your printer.
- **Product take-back:** To return this product to HP at the end of its useful life, go to www.hp.com/recycle. To return empty print cartridges to HP, see [print cartridge recovery](#).

Note: The extended warranty and product take-back options are not available in all countries/regions.

Energy consumption

Energy consumption in standby mode: See the reference guide for energy consumption specifications.

Energy consumption in off-mode: When the printer is off, an amount of energy is still being consumed. Energy consumption can be prevented by turning the printer power off, then disconnecting the end of the printer power cord from the electrical source.

12.3 Print cartridge recovery

Customers interested in recycling their genuine HP print cartridges can participate in HP's Planet Partner's Program for inkjet cartridges. HP offers this program in more countries/regions than any other inkjet cartridge manufacturer in the world. This program is provided as a free service to HP customers as an environmentally sound solution for these products at end-of-life.

To participate, simply follow the directions provided on the HP Web site at this address: www.hp.com/recycle. This service is not available in all countries/regions. Customers may be asked for their name, phone number, and address.

Because HP's unique recycling processes are very sensitive to material contamination, we cannot take back and recycle cartridges from other manufacturers. The end products of the recycling process are used in the manufacture of new products, and HP must ensure the composition of the material is consistent. To do that, we recycle only HP original cartridges. This program does not extend to refilled cartridges.

Returned cartridges are separated for purification into raw materials for use in other industries to manufacture new products. Examples of products made from recycled HP print cartridge materials include automobile parts, trays used in microchip fabrication processes, copper wire, steel plates, and the precious materials used in electronics. Depending on the model, HP is able to recycle up to 65% of the print cartridge by weight. The remaining parts that cannot be recycled (ink, foam, and composite parts) are disposed of in an environmentally responsible manner.

13 Supplies

- [Paper](#)
- [USB cables](#)
- [Print cartridges](#)

Note: The availability of supplies and accessories varies by country/region.

13.1 Paper supplies

This list is subject to change. For an updated list, go to HP customer support at www.hp.com/support.

Note: The availability of supplies varies by country/region.

HP Bright White Inkjet Paper

HPB250 Letter, 250 sheets

HPB1124 Letter, 500 sheets

C5977B A4, 250 sheets

C1825A A4, 500 sheets (Europe/Asia)

HP Premium Paper

51634Y Letter, 200 sheets

51634Z A4, 200 sheets

HP Brochure & Flyer Paper, Matte

C5445A Letter, 100 sheets

HP Brochure & Flyer Paper, Gloss

C6817A Letter, 50 sheets

C6818A A4, 50 sheets

HP Tri-Fold Brochure Paper, Gloss

C7020A Letter, 100 sheets

Q2525A A4, 50 sheets

HP Tri-Fold Brochure Paper, Matte

Q5543A Letter, 100 sheets

HP Premium Inkjet Transparency Film

C3828A Letter, 20 sheets

C3834A Letter, 50 sheets

C3832A A4, 20 sheets

C3835A A4, 50 sheets

HP Premium Plus Photo Paper, Glossy

Q2502A 4x6 in, 60 sheets (U.S.)

Q2502AC 4x6 in, 60 sheets (Canada)

Q2503A 10x15 cm, 20 sheets (Europe)

Q2504A 10x15 cm, 20 sheets (Asia Pacific)

C6831A Letter, 20 sheets (U.S.)

Q1785A Letter, 50 sheets (U.S.)

Q5493A Letter, 100 sheets (U.S.)

C6831AC Letter, 20 sheets (Canada)

C6832A A4, 20 sheets (Europe)

Q1786A A4, 50 sheets (Europe)

Q1951A A4, 20 sheets (Asia Pacific)

Q1933A A4, 20 sheets (Japan)

HP Premium Plus Photo Paper (with tear-off tab)

Q1977A 4x6 in, 20 sheets (U.S.)

Q1978A 4x6 in, 60 sheets (U.S.)

Q5431A 4x6 in, 100 sheets (U.S.)

Q1977AC 4x6 in, 20 sheets (Canada)

Q1978AC 4x6 in, 60 sheets (Canada)

Q1979A 10x15 cm, 20 sheets (Europe)

Q1980A 10x15 cm, 60 sheets (Europe)

Q1952A 10x15 cm, 20 sheets (Asia Pacific)

Q1935A 10x15 cm, 20 sheets (Japan)

HP Premium Plus Photo Paper, Matte

Q2506A 4x6 in, 60 sheets (U.S.)

Q2507A 10x15 cm, 20 sheets (Europe)

Q2508A 10x15 cm, 60 sheets (Europe)

C6950A Letter 20 sheets (U.S.)

Q5450A Letter, 50 sheets (U.S.)

C6950AC Letter, 20 sheets (Canada)

C6951A A4, 20 sheets (Europe)

Q1934A A4, 20 sheets (Japan)

HP Photo Paper, Glossy (with tear-off tab)

C7890A 4x6 in, 20 sheets (North America)

C7893A 4x6 in, 60 sheets (North America)

Q7891A 10x15 cm, 20 sheets (Europe)

Q7894A 10x15 cm, 60 sheets (Europe)

HP Photo Paper, Glossy

C1846A Letter, 25 sheets (U.S.)

C7896A Letter, 50 sheets (U.S.)

Q5437A A4, 25 sheets (Europe)

Q7897A A4, 50 sheets (Europe)

C6765A A4, 20 sheets (Asia Pacific)

C7898A A4, 20 sheets (Japan)

HP Premium Photo Paper, Glossy

Q5477A 4x6 in, 60 sheets (U.S.)

Q5477A 5x7 in, 20 sheets (U.S.)

Q5479A 10x15 cm, 20 sheets (Europe)

Q5480A 13x18 cm, 20 sheets (Europe)

C6039A Letter, 15 sheets (U.S.)

C6979A Letter, 50 sheets (U.S.)

Q5494A Letter, 100 sheets (U.S.)

Q5447A Letter, 120 sheets (U.S.)

C6039AC Letter, 15 sheets (Canada)

C6979AC Letter, 50 sheets (Canada)

Q2519A A4, 20 sheets (Europe)

C7040A A4, 50 sheets (Europe)

HP Premium Photo Paper, Glossy (with tear-off tab)

Q1988A 4x6 in, 20 sheets (U.S.)

Q1989A 4x6 in, 60 sheets (U.S.)

Q1990A 4x6 in, 100 sheets (U.S.)

Q1988AC 4x6 in, 20 sheets (Canada)

Q1989AC 4x6 in, 60 sheets (Canada)

Q1991A 10x15 cm, 20 sheets (Europe)

Q1992A 10x15 cm, 60 sheets (Europe)

HP Premium Photo Paper, Matte (with tear-off tab)

Q5435A 4x6 in, 60 sheets (U.S.)

Q5436A 10x15 cm, 20 sheets (Europe)

HP Premium Photo Paper, Matte

Q1993A Letter, 15 sheets (U.S.)

Q1994A Letter, 50 sheets (U.S.)

Q5433A A4, 20 sheets (Europe)

C5434A A4, 50 sheets (Europe)

HP Premium High Gloss Film

Q1973A Letter, 20 sheets (U.S.)

C3836A Letter, 50 sheets (U.S.)

C3836AC Letter, 50 sheets (Canada)

Q1981A Letter, 20 sheets (Europe)

C3837A Letter, 50 sheets (Europe)

Q1958A A4, 10 sheets (Japan)

HP Everyday Photo Paper, Semi-gloss (with tear-off tab)

- Q5440A 4x6 in, 100 sheets (U.S.)
- Q5440AC 4x6 in, 100 sheets (Canada)
- Q5441A 10x15 cm, 100 sheets (Europe)
- Q5442A 10x15 cm, 100 sheets (Asia Pacific)

HP Everyday Photo Paper, Semi-gloss

- Q5498A Letter, 25 sheets (U.S.)
- Q2509A Letter, 100 sheets (U.S.)
- Q2509AC Letter, 100 sheets (Canada)
- Q5451A A4, 25 sheets (Europe)
- Q2510A A4, 100 sheets (Europe)
- Q2511A A4, 100 sheets (Asia Pacific)

HP Advanced Photo Paper, Glossy

- Q5461A 4x6 in, 60 sheets (U.S.)
- Q5454A Letter, 25 sheets (U.S.)
- Q5510A Letter, 50 sheets (U.S.)

HP Advanced Photo Paper, Glossy (with tear-off tab)

- Q5508A 4x6 in, 20 sheets (U.S.)
- Q5509A 4x6 in, 60 sheets (U.S.)

HP Matte Greeting Cards, White, Quarter-Fold

- C6042A A4, 20 sheets (Europe)

HP Matte Greeting Cards, White, Half-Fold

- C7018A Letter, 20 sheets (U.S.)

HP Photo Greeting Cards, Half-Fold

- C6044A Letter, 10 sheets (U.S.)
- C6045A A4, 10 sheets (Europe)

HP Textured Greeting Cards, Ivory, Half-Fold

C6828A 20 sheets

HP Textured Greeting Cards, Cream, Half-Fold

C6829A 20 sheets

HP Textured Greeting Cards, White, Half-Fold

C7019A 20 sheets

HP Linen Greeting Cards, White, Half-Fold

C1788A 20 sheets

HP Linen Greeting Cards, Ivory, Half-Fold

C1787A 20 sheets

HP Iron-On Transfers (for white fabrics)

C6049A Letter, 12 sheets (U.S.)

C6050A A4, 12 sheets (Europe)

C6055A A4, 12 sheets (Asia Pacific)

C7917A A4, 12 sheets (Japan)

HP Iron-On Transfers for Dark Fabric

C1974A 6 sheets

HP Matte Photo and Project Paper

Q5499A Letter, 50 sets

13.2 USB cables

Note: The availability of supplies varies by country/region.

C6518A HP USB A-B 2 M cable

Index

A

- acknowledgements
- Align button
- aligning print cartridges

B

- borderless photos
 - border appears

C

- cards
 - index
- cleaning
 - print cartridges manually
- collated copies
- contrast enhancement
- conventions

D

- default printer, setting
- digital flash

E

- energy consumption
- environmental statement
- error messages

H

- HP digital photography options
- HP Inkjet Toolbox

I

- index cards

- ink-backup mode
- ink, removing ink from skin and clothing

L

- light
 - flashing

M

- maintenance
 - manually cleaning the print cartridges
- maximum dpi

N

- notices

O

- orientation

P

- page size
- paper jam
- paper supplies
- paper tray
- photographs
 - printing problems
- photos
 - 4800 x 1200 optimized dpi printing
 - black-and-white
 - digital
 - edge is faded
 - enhancing
 - maximum dpi
 - printing
 - storing photo paper
- photos
- Power button
- print cartridges

- align
- black print cartridge
- cleaning automatically
- cleaning manually
- installing
- maintaining
- recovery
- recycling
- replacing
- storing
- tri-color print cartridge
- print job status
- print order
- print quality
- print settings
- printer
 - does not reflect new print settings
 - does not turn on
 - is not printing
 - is slow
 - prints blank pages
- printer body
- printer features
- printer status
- printing
 - brochures
 - documents
 - e-mail
 - envelopes
 - greeting cards
 - index cards
 - iron-on transfers
 - labels
 - letters
 - photos
 - selecting a paper type
 - transparencies
- printing tips

R

- recycling
 - about
 - print cartridges
- removing ink from skin and clothing
- replacing print cartridges
- resizing documents

S

- scaling
- setting printer as default printer
- sharpness
- SmartFocus
- smoothing
- special features
- status of print job

T

- terms
- troubleshooting
 - blank pages print
 - document is printed at an angle
 - document is printed off-center
 - error messages
 - paper jam
 - parts of the document are printed in the wrong place
 - parts of the document are missing
 - photos are not printing correctly
 - print is faded
 - printer does not turn on
 - printer is not printing
 - printer light is flashing
 - printer prints on multiple sheets at once
 - printout does not reflect new print settings
 - prints slowly
 - streaks and missing lines
 - text and images are misaligned

U

USB

cable part number