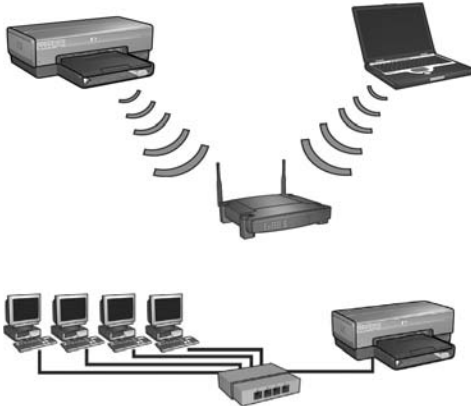


HP Deskjet 6800 series



Network Guide 網路指南





i n v e n t

English

Edition 1 May 2004

Copyright 2004 Hewlett-Packard Development Company, L.P.

Notice

Reproduction, adaptation, or translation without prior written permission is prohibited, except as allowed under the copyright laws.

The information contained herein is subject to change without notice.

The only warranties for HP products and services are set forth in the express warranty statements accompanying such products and services. Nothing herein should be construed as constituting an additional warranty. HP shall not be liable for technical or editorial errors or omissions contained herein.

Acknowledgements

Microsoft®, MS-DOS, and Windows are registered trademarks of Microsoft Corporation.

Mac, Macintosh, AppleTalk, and Mac OS are trademarks of Apple Computer, Inc., registered in the U.S. and other countries.

This product includes software developed by the OpenSSL Project for use in the OpenSSL Toolkit (<http://www.openssl.org>).

Wi-Fi® and the Wi-Fi logo are registered trademarks of the Wi-Fi Alliance.

PictBridge and the PictBridge logo are trademarks of the Camera & Imaging Products Association (CIPA).

Networking the HP Deskjet 6800 series printer

Thank you for buying the HP Deskjet 6800 series printer!



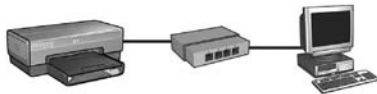
This guide contains the following information about networking your printer:

Connecting the printer to a wireless network 3



Step 1: Find the network basic wireless settings	5
Step 2: Find the network wireless security settings	7
Step 3: Install the printer software for a wireless connection	9
Troubleshooting a wireless connection	27

Connecting the printer to a wired Ethernet network 36



Step 1: Connect the printer to the network	37
Step 2: Install the printer software over a wired Ethernet connection	39
Troubleshooting a wired Ethernet connection	42

Managing the printer on a network 48

HP Report page	49
Embedded Web server (EWS)	50
Changing wireless security settings	51
Configuring the printer for a software firewall	52
Resetting the printer to factory default settings	57

Glossary 58

Connecting the printer to a wireless network



Getting started

Has the printer hardware been set up?

Follow the instructions on the setup poster that came with the printer to set up the printer hardware before connecting the printer to the network.

Are computers on the network protected by a software firewall?

If any of the computers on the network are protected by a software firewall, follow the instructions under “Configuring the printer for a software firewall” on page 52 before connecting the printer to the network.

Connecting to the printer

Step 1: Find the network basic wireless settings

You need to know the **network name (SSID)** and **communication mode** of the network. Consult the configuration utility for the network Wireless Access Point (WAP) or the computer network card for these settings.

For more information, see “Step 1: Find the network basic wireless settings” on page 5.

Step 2: Find the network wireless security settings

You need to know what type of security your network uses: WPA, WEP, or none.

For more information, see “Step 2: Find the network wireless security settings” on page 7.

Go to the next page...

Step 3: Install the printer software for a wireless connection

The steps for installing the printer software on your computer vary by operating system and communication mode.

For installation instructions, see “Step 3: Install the printer software for a wireless connection” on page 9.



Wireless Network Key? If you use a USB flash drive as a Wireless Network Key to configure devices for your wireless network, skip steps 1 and 2 and go to “Infrastructure network with a Wireless Network Key” on page 10.

Step 1: Find the network basic wireless settings

In order to install the printer on a wireless network, you need to know the **communication mode** and **network name (SSID)** of the network. To find these settings, consult the configuration utility for the computer network card or for the network Wireless Access Point (WAP).

Communication mode

There are two options for the network communication mode:

- Infrastructure
- Ad hoc

Infrastructure (recommended)

If you want to use a Wireless Access Point (WAP) to connect the printer to a network, then set the printer to the infrastructure communication mode. In the Infrastructure mode the printer communicates with other devices on the network, whether the devices are wired or wireless, through a WAP. WAPs commonly act as routers or gateways on small networks.



Ad hoc or computer-to-computer networks

If you do not want to use a WAP to connect the printer to a wireless network, then set the printer to the ad hoc, or "computer-to-computer," communication mode. In the ad hoc mode, the printer communicates directly with other wireless devices.



Network name (SSID)

A network name, or “Service Set Identifier (SSID),” identifies a particular wireless network. In order to operate on a network, a device must know the network name of the network.

More information

For more information about wireless networking concepts, see the online user’s guide. The online user’s guide is available after you install the printer software on your computer.

Step 2: Find the network wireless security settings

The printer **must** share the same network wireless security settings as the other devices on the network. If the printer does not have the correct wireless security settings, other devices on the network will not be able to use the printer.

To find the security settings for the wireless network, consult the configuration utility for the computer wireless network card or the network Wireless Access Point (WAP).

Types of wireless security

You can configure the printer to use the following wireless security options:

- Open system (no security)
- Wired Equivalent Privacy (WEP)
- Wi-Fi Protected Access (WPA)

Open system (no security)

On an open system, the network does not require authorization or encryption.

To configure the printer to operate on an open system, you need to know the network communication mode and network name (SSID). For help finding these items, see "Step 1: Find the network basic wireless settings" on page 5.

Wired Equivalent Privacy (WEP)

Wired Equivalent Privacy (WEP) provides security by encrypting data sent over radio waves from one wireless device to another wireless device. Devices on a WEP-enabled network use WEP keys to encode data.

To configure the printer to operate on a network that uses WEP, you must know the WEP key(s) that the network uses.

Wi-Fi Protected Access (WPA)

Wi-Fi Protected Access (WPA) provides security by doing the following:

- Encrypting data sent over radio waves from one wireless device to another wireless device
- Controlling access to network resources through authentication protocols

To configure the printer to operate on a network that uses WPA, you must know the passphrase and authentication protocol that the network uses.

Step 3: Install the printer software for a wireless connection

Software Firewall? If your computer is protected by a software firewall, follow the steps under "Configuring the printer for a software firewall" on page 52 before installing the printer software.

Windows



Wireless Network Key? If you use a USB flash drive as a Wireless Network Key to configure devices for your wireless network, see "Infrastructure network with a Wireless Network Key" on page 10.

Infrastructure network (recommended)

1. Use an Ethernet cable to connect the printer to an Ethernet port on the network, such as an available Ethernet port on a Wireless Access Point (WAP), router, hub, or wall socket.
2. Insert the printer software CD in the computer CD-ROM drive, and then follow the onscreen instructions.
3. On the **Connection Type** screen, select **Wireless**, and then click **Next**.
4. Follow the onscreen instructions to complete the software installation.

Additional computers

You must install the printer software on each computer that will use the printer. Follow steps 2 through 4 above to install the printer software on other network computers.

The Ethernet cable is only needed when installing the printer software and configuring its wireless settings during the first installation on the network. The Ethernet cable is not required for installing the printer on other computers on the network.

Infrastructure network with a Wireless Network Key

Getting ready

Using a USB flash drive as a Wireless Network Key is a fast and convenient way to configure a device to operate on a wireless network.



In order to use a USB flash drive as a Wireless Network Key to configure the printer, you must have a computer with Windows XP Service Pack 2 and a wireless network card installed. To obtain Windows XP Service Pack 2, visit the Microsoft Web site at this address: www.microsoft.com.

Using the Wireless Network Key

Follow these steps to use a Wireless Network Key to configure the printer for your wireless network:

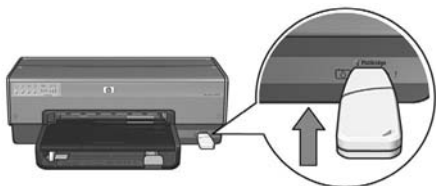
1. On the Windows desktop, click **Start**, point to **Programs**, point to **Accessories**, point to **Communications**, and then click **Wireless Network Setup**.
2. On the wireless network setup wizard, enter the network name of the wireless network, then do one of the following tasks:
 - To let Windows create the Wireless Network Key, select the automatic option.
 - To create the Wireless Network Key yourself, select the manual option.

Note: If the router on your network does not support the use of a Wireless Network Key, you must select the manual option. If you select the manual option, you must know the wireless network security settings.

3. Follow the onscreen instructions until you are prompted to remove the Wireless Network Key from the computer.

Go to the next page...

4. With the printer powered on, plug the Wireless Network Key into the PictBridge USB port on the front of the printer.



5. Wait for the printer lights to flash simultaneously three times.
6. Plug the Wireless Network Key into the computer, and then follow the onscreen instructions to complete the wireless network setup wizard.
7. Insert the printer software CD in the computer CD-ROM drive, and then follow the onscreen instructions.
8. On the **Connection Type** screen, select **Wireless**, and then click **Next**.
9. Follow the onscreen instructions to complete the software installation.

Additional computers

You must install the printer software on each computer that will use the printer. Follow steps 7 through 9 above to install the printer software on other network computers.

Ad hoc

Devices on the ad hoc network must:

- Be 802.11b compatible
- Have **ad hoc** as the communication mode
- Have the same network name (SSID)
- Be on the same subnet
- Be on the same channel
- Have the same wireless security settings

Follow these steps to connect to the printer using the factory default ad hoc network settings:

1. Open the configuration utility for the computer wireless network card, and then do the following tasks:
 - a. Create a new wireless profile with the following values:
 - Communication mode: **ad hoc**
 - Network Name (SSID): **hpsetup**
 - Security (encryption): **disabled**
 - b. Activate the profile.
2. Wait two minutes for the printer to obtain an IP address, and then press the **HP Report** button to print an HP Report page.



3. On the HP Report page, verify the following settings:
 - The network name (SSID) is **hpsetup**
 - The communication mode is **ad hoc**
 - The subnet mask and channel match those of your wireless network
 - The IP address is *something other than 0.0.0.0*

If one of the above is not true, delete the wireless profile created in step 1, and then repeat steps 1 through 3.

Go to the next page...

4. Insert the printer software CD in the computer CD-ROM drive, and then follow the onscreen instructions.
5. On the **Connection Type** screen, select **Wireless**, and then click **Next**.
6. Follow the onscreen instructions to complete the software installation.

Additional computers

You must install the printer software on each computer that will use the printer. Follow steps 4 through 6 above to install the printer software on other network computers.

Advanced setup

For instructions on configuring the printer to operate on ad hoc networks other than the **hpsetup** factory default, visit the HP Web site at www.hp.com/support.

802.11g

The printer defaults to 802.11b in ad hoc mode in order to be compatible with the widest assortment of 802.11 devices. If your network is made up of only 802.11g devices, then you might want to configure the printer to operate in 802.11g mode in order to optimize network performance.

Follow these steps to configure the printer to operate in 802.11g mode while connected to an ad hoc network:

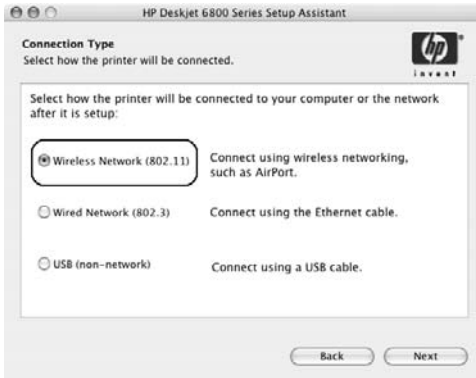
1. Open the printer embedded Web server (EWS). For help opening the EWS, see page 50.
2. Click the **Networking** tab.
3. Under the **Connections** heading, click **Wireless (802.11)**.
4. Click the **Advanced** tab.
5. Scroll to the bottom of the Web page, and clear the **In an ad hoc network use 802.11b behavior** check box.
6. Click the **Apply** button, and then close the EWS.

Macintosh

Mac OS X

Infrastructure network (recommended)

1. Use an Ethernet cable to connect the printer to an Ethernet port on the network, such as an available Ethernet port on a Wireless Access Point (WAP), router, hub, or wall socket.
2. Insert the printer software CD in the computer CD-ROM drive, and then double-click the CD desktop icon.
3. Double-click the **HP Deskjet 6800 installer** icon, and then follow the onscreen instructions.
4. On the **Connection Type** screen, select **Wireless Network (802.11)**, and then click **Next**.



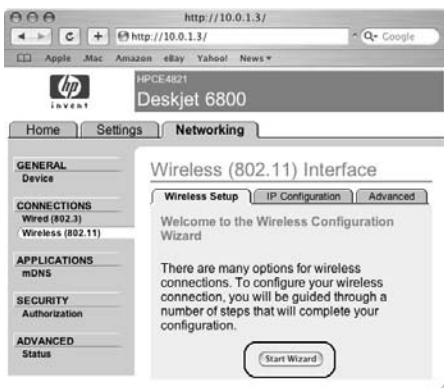
5. Proceed through the next several screens to find the printer on the network.

Go to the next page...

6. On the **Confirm or Change Settings** screen, click the **Change Settings** button.



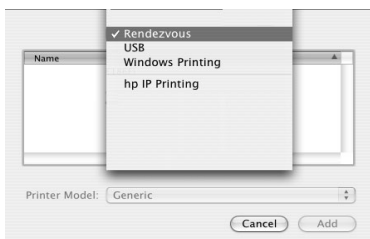
7. On the **Change Settings** screen, click the **Change Settings** button.
The printer embedded Web server (EWS) opens.
8. On the EWS, click the **Networking** tab.
9. Under the **Connections** heading, click **Wireless (802.11)**.
10. On the **Wireless (802.11) Interface** screen, click the **Start Wizard** button to start the Wireless Configuration Wizard.



Go to the next page...

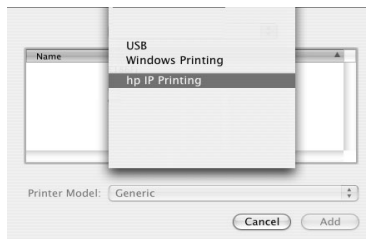
11. Follow the onscreen instructions to configure the printer settings.
12. After the **Wireless Configuration Wizard** is finished, close the EWS.
13. On the **Confirm or Change Settings** screen, click **Next**.
14. Follow the onscreen instructions to complete the printer software installation.
15. On the **Add Printer** screen, click **Open Print Center**.
16. Click **Add Printer**.
17. Do one of the following depending on the version of Mac OS X you are using:

Mac OS X v 10.2.3 and later



Select **Rendezvous**.

Mac OS X v 10.2.2 and earlier



Select **HP IP Printing**, then click the **Discover** button.

18. Select the printer, and then click the **Add** button.
19. Close **Print Center**.

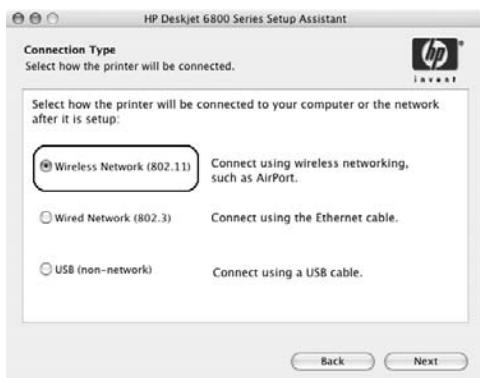
Additional computers

Follow these steps to install the printer software on each computer that will use the printer.

1. Insert the printer software CD in the computer CD-ROM drive, and then double-click the CD desktop icon.
2. Double-click the **HP Deskjet 6800 installer** icon, and then follow the onscreen instructions.
3. Close the **HP Deskjet 6800 series printer Setup Assistant** when it appears.
Since the printer is already configured for the network, you do not need to use the setup assistant.
4. Open **Print Center**, and then follow steps 15 through 19 above.

Ad hoc or computer-to-computer

1. Use an Ethernet cable to connect the printer to the computer.
2. Insert the printer software CD in the computer CD-ROM drive, and then double-click the CD desktop icon.
3. Double-click the **HP Deskjet 6800 installer** icon, and then follow the onscreen instructions.
4. On the **Connection Type** screen, select **Wireless Network (802.11)**, and then click **Next**.



5. Proceed through the next several screens to find the printer on the network.

Go to the next page...

6. On the **Confirm or Change Settings** screen, click the **Change Settings** button.

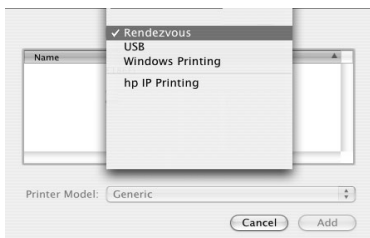


7. On the **Change Settings** screen, click the **Change Settings** button.
The printer embedded Web server (EWS) opens.
8. On the EWS, click the **Networking** tab.
9. Under the **Connections** heading, click **Wireless (802.11)**.
10. On the **Wireless (802.11) Interface** screen, click the **Advanced** tab.
11. Enter the wireless network settings for the wireless network to which you want to connect the printer:
- Under the **Network Name** heading, enter the network name (such as "MyNetwork") in the **SSID** box.
 - Under the **Network Settings** heading:
 - Select **Ad Hoc**.
 - Select the channel from the **Channel** drop-down list.
 - Enter the network wireless security settings.
12. After entering the wireless network settings, click the **Apply** button, and then close the EWS.
13. On the **Add Printer** screen, click **Open Print Center**.
14. Click **Add Printer**.

Go to the next page...

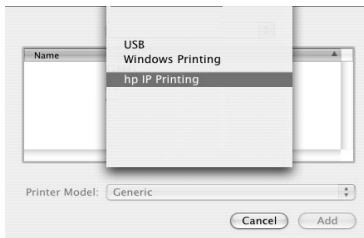
15. Do one of the following depending on the version of Mac OS X you are using:

Mac OS X v 10.2.3 and later



Select **Rendezvous**.

Mac OS X v 10.2.2 and earlier



Select **HP IP Printing**, then click the **Discover** button.

16. Select the printer, and then click the **Add** button.

17. Close **Print Center**.

Additional computers

Follow these steps to install the printer software on each computer that will use the printer.

1. Insert the printer software CD in the computer CD-ROM drive, and then double-click the CD desktop icon.
2. Double-click the **HP Deskjet 6800 installer** icon, and then follow the onscreen instructions.
3. Close the **HP Deskjet 6800 series printer Setup Assistant** when it appears.
Since the printer is already configured for the network, you do not need to use the setup assistant.
4. Open **Print Center**, and then follow steps 13 through 17 above.

802.11g

The printer defaults to 802.11b in ad hoc mode in order to be compatible with the widest assortment of 802.11 devices. If your network is made up of only 802.11g devices, then you might want to configure the printer to operate in 802.11g mode in order to optimize network performance.

To configure the printer to operate in 802.11g mode while connected to an ad hoc network, follow the steps under "802.11g" on page 13.

Mac OS X Classic

1. Follow the steps on page 14 to install the printer software on a Mac OS X computer.
2. Open **Chooser**, and then select the **HP Inkjet 6.x** icon.

Note: If you do not see the **HP Inkjet 6.x** icon, then insert the printer software CD into the computer CD-ROM drive and follow the onscreen instructions to install the Mac OS 9 printer driver. Then repeat step 1.

3. When asked if you want the computer to scan for TCP/IP network printers, click **Yes**.
4. Select the printer, and then close **Chooser**.

Mac OS 9

Infrastructure network without encryption

1. Use an Ethernet cable to connect the printer to an Ethernet port on the network, such as an available Ethernet port on a Wireless Access Point (WAP), router, hub, or wall socket.
2. Verify that the Network light is illuminated. If not, check the cable connections.



3. Press the printer **Report Page** button to print an HP Report page.



4. Launch the computer Internet browser, and then enter the printer URL listed on the HP Report page in the address box to open the printer embedded Web server (EWS).
5. On the EWS, click the **Networking** tab.
6. Under the **Connections** heading, click **Wireless (802.11)**.
7. On the **Wireless (802.11) Interface** screen, click the **Start Wizard** button to start the Wireless Configuration Wizard.



Go to the next page...

8. Follow the onscreen instructions to configure the printer settings.
9. After the **Wireless Configuration Wizard** is finished, close the EWS.
10. Unplug the Ethernet cable from the printer to enable wireless communication.
11. Insert the printer software CD in the computer CD-ROM drive, and then double-click the CD desktop icon.
12. Double-click the **HP Deskjet 6800 installer** icon, and then restart the computer when prompted.
13. Open **Chooser**, and then select the **HP Inkjet 6.x** icon.
14. When asked if you want the computer to scan for TCP/IP network printers, click **Yes**.
15. Select the printer, and then close **Chooser**.

Additional computers

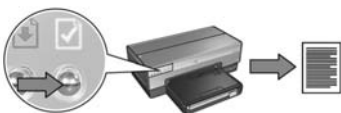
You must install the printer software on each computer that will use the printer. Follow steps 11 through 15 above to install the printer software on other network computers.

Infrastructure network with encryption

1. Open the **AirPort Admin Utility**, then do the following:
 - a. Click **Base Station**, and then select **Equivalent Network Password**.
 - b. Write down the WEP key on a piece of paper.
 - c. Close the **AirPort Admin Utility**.
2. Use an Ethernet cable to connect the printer to an Ethernet port on the network, such as an available Ethernet port on a Wireless Access Point (WAP), router, hub, or wall socket.
3. Verify that the Network light is illuminated. If not, check the cable connections.



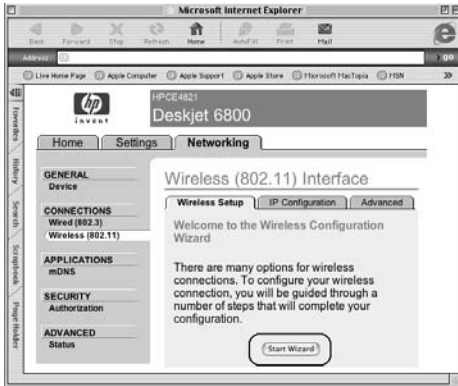
4. Press the printer **Report Page** button to print an HP Report page.



5. Launch the computer Internet browser, and then enter the printer URL listed on the HP Report page in the address box to open the printer embedded Web server (EWS).
6. On the EWS, click the **Networking** tab.
7. Under the **Connections** heading, click **Wireless (802.11)**.

Go to the next page...

- On the **Wireless (802.11) Interface** screen, click the **Start Wizard** button to start the Wireless Configuration Wizard.



- Follow the onscreen instructions to configure the printer settings, including the WEP key you wrote down in step 1.
- After the **Wireless Configuration Wizard** is finished, close the EWS.
- Unplug the Ethernet cable from the printer to enable wireless communication.
- Insert the printer software CD in the computer CD-ROM drive, and then double-click the CD desktop icon.
- Double-click the **HP Deskjet 6800 installer** icon, and then restart the computer when prompted.
- Open **Chooser**, and then select the **HP Inkjet 6.x** icon.
- When asked if you want the computer to scan for TCP/IP network printers, click **Yes**.
- Select the printer, and then close **Chooser**.

Additional computers

You must install the printer software on each computer that will use the printer. Follow steps 12 through 16 above to install the printer software on other network computers.

Ad hoc or computer-to-computer

1. Press the printer **Report Page** button to print an HP Report page.



2. Open the **AirPort Setup Assistant**, and then follow the onscreen instructions for joining an existing wireless network. Use **hpsetup** as the existing network to join.
3. Find the **URL** listed on the HP Report page.
4. Launch the computer Internet browser, and then enter the printer URL listed on the HP Report page in the address box to open the printer embedded Web server (EWS).
5. On the EWS, click the **Networking** tab.
6. Under the **Connections** heading, click **Wireless (802.11)**.
7. On the **Wireless (802.11) Interface** screen, click the **Advanced** tab.
8. Enter the wireless network settings for the wireless network to which you want to connect the printer:
 - Under the **Network Name** heading, enter the network name (such as "MyNetwork") in the **SSID** box.
 - Under the **Network Settings** heading:
 - Select **Ad Hoc**.
 - Select the channel from the **Channel** drop-down list.
 - Enter the network wireless security settings.
9. After entering the wireless network settings, click the **Apply** button, and then close the EWS.
10. Open the **AirPort Setup Assistant**, and then reset the computer to the original AirPort configuration.

Go to the next page...

11. Insert the printer software CD in the computer CD-ROM drive, and then double-click the CD desktop icon.
12. Double-click the **HP Deskjet 6800 installer** icon, and then restart the computer when prompted.
13. Open **Chooser**, and then select the **HP Inkjet 6.x** icon.
14. When asked if you want the computer to scan for TCP/IP network printers, click **Yes**.
15. Select the printer, and then close **Chooser**.

Additional computers

You must install the printer software on each computer that will use the printer. Follow steps 11 through 15 above to install the printer software on other network computers.

802.11g

The printer defaults to 802.11b in ad hoc mode in order to be compatible with the widest assortment of 802.11 devices. If your network is made up of only 802.11g devices, then you might want to configure the printer to operate in 802.11g mode in order to optimize network performance.

To configure the printer to operate in 802.11g mode while connected to an ad hoc network, follow the steps under "802.11g" on page 13.

Troubleshooting a wireless connection

During software installation

During the software installation process, the setup wizard searches for the printer twice, once when the Ethernet cable is connected to the printer, and then after the Ethernet cable has been removed.

The computer cannot find the printer when the Ethernet cable is connected

If the computer cannot find the printer when the Ethernet cable is connected, verify the following before investigating any of the topics in this section:

- All cable connections to the computer and the printer are secure.
- The network is operational and the network hub, switch, router, or Wireless Access Point (WAP) is powered on.
- The printer is powered on, paper is loaded in the In tray, and the print cartridges are correctly installed.
- All applications, including virus protection programs and personal firewalls, are closed or disabled.

If you corrected any of the above, try running the installation wizard again.

Connect the Ethernet cable if it is not connected

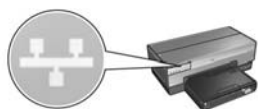
Connecting the Ethernet cable to the printer is crucial to successfully configuring the printer to operate on a wireless network.

Use an Ethernet cable to connect the printer to an Ethernet port on the network, such as an available Ethernet port on a Wireless Access Point (WAP), router, hub, or wall socket.

After connecting the cable, rerun the installation wizard. When prompted during the installation, remove the Ethernet cable.

Check the Network light

Check the Network light on the front of the printer. If the Network light is not illuminated, then the printer is not connected to the network.



Verify that the cable connections are secure. If the cable connections are secure, press the **Report Page** button on the front of the printer to print an HP Report page.



Then try one of the following solutions to connect the printer to the network.

- **Disable any software firewall running on the computer**

A software firewall can prevent the computer from finding the printer on the network during the printer software installation process. If the computer cannot discover the printer, then the printer software cannot be installed on the computer. If the computer has a software firewall other than the firewall included with Windows XP installed (such as, BlackICE®, ZoneAlarm®, or Brickhouse®), consult the documentation that came with the firewall for help in disabling the firewall.

Note: The software firewall included with Windows XP does not interfere with the connection to the printer. If the computer is only running the Windows XP software firewall, then you do not need to disable the firewall during software installation or assign the printer a static IP address.

Before installing the printer software on a computer, temporarily disable the software firewall on the computer, and then assign the printer a static IP address. After the printer software is installed on the computer, re-enable the firewall.

For instructions about connecting the printer to a network on which computers are protected by a software firewall, go to "Configuring the printer for a software firewall" on page 52.

- **Place the printer and the computer on the same subnet**

A subnet is a small network that is part of a larger network. If the computer is on a different subnet than the printer, the software installation can be problematic.

Compare the printer IP address listed on the HP Report page with the IP address for the computer. If the first set of digits in the IP addresses are not identical, then the printer and the computer are not on the same subnet. For example, if the computer IP address begins with 169 and the printer IP address begins with 10, then the printer and the computer are not on the same subnet.

To find the IP address on a Windows computer:

1. Click **Start**, click **Run**, and then enter **Command**.
2. Type **ipconfig** at the command prompt, and then press **Enter**.

To find the IP address on a Macintosh OS X computer:

1. Open the **Network** control panel.
2. Select **Airport** in the **Show** drop-down list, and then click **TCP/IP**.

To find the IP address on a Macintosh OS 9 computer, select **TCP/IP** from the **Apple** menu.

If the computer and the printer are not on the same subnet, move the printer to the same subnet as the computer, and then run the setup wizard again.



The computer and the printer are on different subnets.



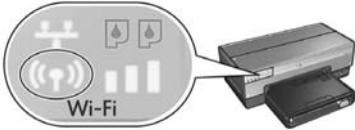
The computer and the printer are on the same subnet.

- **Verify that the computer is connected to the network**

Verify that the computer is connected to the network and the computer LAN or network card is operating correctly.

The computer cannot find the printer after you remove the network cable

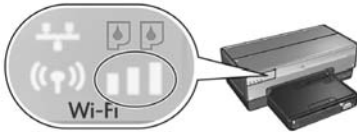
Check the Wireless Status light on the front of the printer. If the Wireless Status light is not illuminated, then the printer wireless radio is not active.



Verify that the network cable has been removed from the printer. The printer cannot communicate over a wireless connection if the network cable is connected to the printer Ethernet port.

Check the Network light

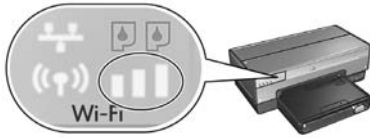
Check the Network light on the front of the printer. If the Network light is not illuminated, then the printer is not connected to the network.



Try the following solutions:

- **Check the Signal Strength indicator**

Check the Signal Strength indicator on the front of the printer. If all three bars are illuminated, then the printer is receiving a strong radio signal.



If none or only one of the bars on the Signal Strength indicator is illuminated, then verify the following conditions:

- No large objects are obstructing the path between the printer and the WAP or the printer and the computer.
 - The printer is within range of the WAP or computer.
 - A cordless phone or microwave oven is not operating near the wireless network.
- **Compare the printer wireless settings to the network wireless settings**

Press the **Report Page** button on the front of the printer to print an HP Report page.



Check the settings displayed on the HP Report page against the wireless settings for the network. Find the settings that do not match. Use the Ethernet cable to connect the printer to the network, rerun the setup wizard, and then enter the correct network wireless settings to configure the printer for the network.

- **The Wireless Access Point (WAP) filters by MAC address**

If the network WAP or router filters network devices by MAC address, then follow these steps:

1. Find the printer hardware address (MAC address) on the HP Report page.
2. Open the configuration utility for the WAP or router.
3. Enter the printer MAC address for the printer.

For help using the configuration utility for the WAP or router, consult the documentation that came with the WAP or router.

After software installation Printer does not print

If the printer does not print, then verify the following:

- The printer is loaded with paper.
- The printer is not experiencing a paper jam.
- The Print Cartridge Status lights on the front of the printer are not illuminated or flashing.
- The printer is selected in the application from which you are attempting to print.
- The network is operational and the network hub, switch, router, or Wireless Access Point (WAP) is powered on.
- The printer is powered on.

For further troubleshooting information, see the printer online user's guide installed on the computer.

If each of the above conditions is true, then follow the steps to check the Network light as shown under "Check the Network light" on page 30.

Network settings are wrong or have changed

If any of the settings displayed on the HP Report page do not match the network settings, or if the network wireless security settings have changed, follow these steps:

1. Connect the Ethernet cable to the printer Ethernet port, and then do one of the following tasks:
 - For an ad hoc network: connect the Ethernet cable to your computer.
 - For an infrastructure network: connect the Ethernet cable to the Wireless Access Point or router.
2. Open the printer embedded Web server (EWS). For help opening the EWS, see page 50.
3. On the EWS, click the **Networking** tab.
4. Under the **Connections** heading click **Wireless (802.11)**.
5. Click the **Wireless Setup** button to run the wireless setup wizard.
6. After the wireless setup wizard has finished, close the EWS, and then disconnect the Ethernet cable.

If the printer still does not print, try the following solutions:

- **Network authentication protocol is not supported by the printer**

If you changed the network authentication protocols on your wireless network after connecting the printer to the network, you might have selected a protocol that is not supported by the printer.

The printer can support WEP authentication, WPA-AES, and WPA-TKIP. The network to which the printer is connected must use one of these authentication protocols or no authentication at all.

- **Software firewall is blocking access to the printer**

If your network uses DHCP or AutoIP to assign IP addresses to network devices, then a software firewall installed on your computer might block access to the printer after the printer is connected to the network and the printer software is installed on the computer.

Note: The software firewall included with Windows XP does not interfere with the connection to the printer. If the computer is only running the Windows XP software firewall, then you do not need to disable the firewall during software installation or assign the printer a static IP address.

To fix this problem, follow the steps under "Configuring the printer for a software firewall" on page 52.

- **The printer and the computer are not on the same subnet**

A subnet is a small network that is part of a larger network. If the computer is on a different subnet than the printer, the computer and the printer might not be able to communicate.

Compare the printer IP address listed on the HP Report page with the IP address for the computer. If the first set of digits in the IP addresses are not identical, then the printer and the computer are not on the same subnet. For example, if the computer IP address begins with 169 and the printer IP address begins with 10, then the printer and the computer are not on the same subnet.

To find the IP address on a Windows computer:

1. Click **Start**, click **Run**, and then enter **Command**.
2. Type **ipconfig** at the command prompt, and then press **Enter**.

To find the IP address on a Macintosh OS X computer:

1. Open the **Network** control panel.
2. Select **Airport** in the **Show** drop-down list, and then click **TCP/IP**.

To find the IP address on a Macintosh OS 9 computer, select **TCP/IP** from the **Apple** menu.

If the computer and the printer are not on the same subnet, move the printer to the same subnet as the computer.

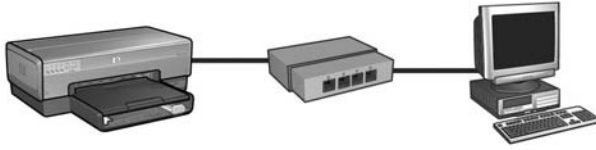


The computer and the printer are on different subnets.



The computer and the printer are on the same subnet.

Connecting the printer to a wired Ethernet network



Getting started

Has the printer hardware been set up?

Follow the instructions on the setup poster that came with the printer to set up the printer hardware before connecting the printer to the network.

Are computers on the network protected by a software firewall?

If any of the computers on the network are protected by a software firewall follow the instructions under "Configuring the printer for a software firewall" on page 52 before connecting the printer to the network.

Connecting to the printer

Step 1: Connect the printer to the network

Use an Ethernet cable to connect the printer to the network hub, switch, or router.

For instructions on connecting the printer to a network, see "Step 1: Connect the printer to the network" on page 37.

Step 2: Install the printer software over a wired Ethernet connection

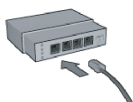
The steps for installing the printer software on your computer vary by operating system: Windows, Mac OS9, and Mac OS X.

For installation instructions, see "Step 2: Install the printer software over a wired Ethernet connection" on page 39.

Step 1: Connect the printer to the network



Follow these steps to connect the printer to an Ethernet network:

1. Verify that the printer is powered on.
2. Connect the Ethernet cable to the network hub, switch, or router.



Note: Do not plug the Ethernet cable into a port labeled **Internet**, **WAN**, or **Uplink**.

3. Connect the Ethernet cable to the Ethernet port on the back of the printer.
4. Do one of the following:

State of the Link light	Task
On 	Go to step 5.
Off 	Repeat steps 2 through 4. If the Link light is still off, then verify the following: <ul style="list-style-type: none"> • The printer is powered on. • The network hub, switch, or router is powered on. • All cable connections are secure. • You are using an Ethernet cable.

Go to the next page...

5. Press the printer **Report Page** button to print an HP Report page.



6. Install the printer software on each computer that will use the printer (see "Step 2: Install the printer software over a wired Ethernet connection" on page 39).

Note: It is recommended that the printer and the computers that use the printer be on the same subnet.

Step 2: Install the printer software over a wired Ethernet connection

Software Firewall? If your computer is protected by a software firewall follow the steps under "Configuring the printer for a software firewall" on page 52 before installing the printer software.

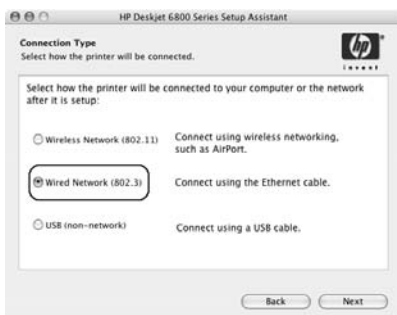
Windows

1. Insert the printer software CD in the computer CD-ROM drive, and then follow the onscreen instructions.
2. On the **Connection Type** screen, select **Wired Network**, and then click **Next**.
3. Follow the onscreen instructions to complete the software installation.

Macintosh

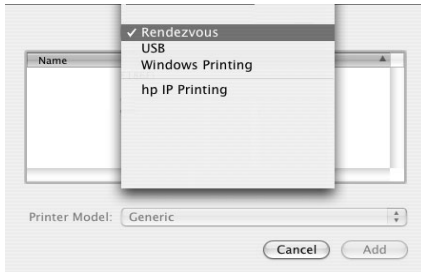
Mac OS X

1. Insert the printer software CD in the computer CD-ROM drive, and then double-click the CD desktop icon.
2. Double-click the **HP Deskjet 6800 installer** icon, and then follow the onscreen instructions.
3. On the **Connection Type** screen, select **Wired Network (802.3)**, and then click **Next**.

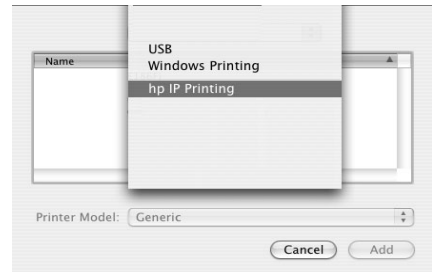


Go to the next page...

4. Follow the onscreen instructions to complete the software installation.
5. On the **Add Printer** screen, click **Open Print Center**.
6. Click **Add Printer**.
7. Do one of the following depending on the version of Mac OS X you are using:

Mac OS x v 10.2.3

Select **Rendezvous**.

Mac OS x v 10.2.2 and lower

Select **HP IP Printing**, and then click the **Discover** button.

8. Select the printer, and then click the **Add** button.
9. Close **Print Center**.

Mac OS 9

1. Insert the printer software CD in the computer CD-ROM drive, and then double-click the CD desktop icon.
2. Double-click the **HP Deskjet 6800 installer** icon, and then restart the computer when prompted.
3. Open **Chooser**, and then select the **HP Inkjet 6.x** icon.
4. When asked if you want the computer to scan for TCP/IP network printers, click **Yes**.
5. Select the printer, and then close **Chooser**.

Troubleshooting a wired Ethernet connection

During installation

The computer cannot find the printer

If you are unable to install the printer software on the computer or discover the printer, verify the following before investigating any of the topics in this section:

- All cable connections to the computer and the printer are secure.
- The network is operational and the network hub, switch, or router is powered on.
- The printer is powered on.
- All applications, including virus protection programs and personal firewalls, are closed or disabled.

Check the Network light on the front of the printer. If the Network light is not illuminated, then the printer is not connected to the network.



Verify that the cable connections are secure. If the cable connections are secure, press the **Report Page** button on the front of the printer to print an HP Report page.



Then try one of the following solutions to connect the printer to the network.

- **Printer and computer are on different subnets**

A subnet is a small network that is part of a larger network. If the computer is on a different subnet than the printer, the software installation can be problematic.

Compare the printer IP address listed on the HP Report page with the IP address for the computer. If the first set of digits in the IP addresses are not identical, then the printer and the computer are not on the same subnet. For example, if the computer IP address begins with 169 and the printer IP address begins with 10, then the printer and the computer are not on the same subnet.

To find the IP address on a Windows computer:

1. Click **Start**, click **Run**, and then enter **Command**.
2. Type **ipconfig** at the command prompt, and then press **Enter**.

To find the IP address on a Macintosh OS X computer:

1. Open the **Network** control panel.
2. Select **Airport** in the **Show** drop-down list, and then click **TCP/IP**.

To find the IP address on a Macintosh OS 9 computer, select **TCP/IP** from the **Apple** menu.

If the printer and the computer are not on the same subnet, move the printer to the same subnet as the computer and then run the installation wizard again.



The computer and the printer are on different subnets.



The computer and the printer are on the same subnet.

- **Disable any firewall running on the computer**

A software firewall can prevent the computer from finding the printer on the network during the printer software installation process. If the computer cannot discover the printer, then the printer software cannot be installed on the computer.

If the computer has a software firewall other than the firewall included with Windows XP installed (such as BlackICE®, ZoneAlarm®, or Brickhouse®), consult the documentation that came with the firewall for help in disabling the firewall.

Note: The software firewall included with Windows XP does not interfere with the connection to the printer. If the computer is only running the Windows XP software firewall, then you do not need to disable the firewall during software installation or assign the printer a static IP address.

Before installing the printer software on a computer, temporarily disable the software firewall on the computer, and then assign the printer a static IP address. After the printer software is installed on the computer, re-enable the firewall.

For instructions about connecting the printer to a network on which computers are protected by a software firewall, go to “Configuring the printer for a software firewall” on page 52.

After installation

Printer does not print

If the printer does not print, then verify the following:

- The printer is loaded with paper.
- The printer is not experiencing a paper jam.
- The Print Cartridge Status lights on the front of the printer are not illuminated or flashing.
- The printer is selected in the application from which you are attempting to print.
- The network is operational and the network hub, switch, or router is powered on.
- The printer is powered on.
- All cable connections to the computer and the printer are secure.

For further troubleshooting information, see the printer online user guide installed on the computer.

Check the Network light on the front of the printer. If the Network light is not illuminated, then the printer is not connected to the network.



Verify that the cable connections are secure. If the cable connections are secure, press the **Report Page** button on the front of the printer to print an HP Report page.



Then try one of the following solutions to connect the printer to the network.

- **Printer and computer are on different subnets**

A subnet is a small network that is part of a larger network. If the computer is on a different subnet than the printer, the computer and the printer might not be able to communicate.

Compare the printer IP address listed on the HP Report page with the IP address for the computer. If the first set of digits in the IP addresses are not identical, then the printer and the computer are not on the same subnet. For example, if the computer IP address begins with 169 and the printer IP address begins with 10, then the printer and the computer are not on the same subnet.

To find the IP address on a Windows computer:

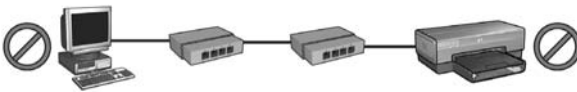
1. Click **Start**, click **Run**, and then enter **Command**.
2. Type **ipconfig** at the command prompt, and then press **Enter**.

To find the IP address on a Macintosh OS X computer:

1. Open the **Network** control panel.
2. Select **Airport** in the **Show** drop-down list, and then click **TCP/IP**.

To find the IP address on a Macintosh OS 9 computer, select **TCP/IP** from the **Apple** menu.

If the printer and the computer are not on the same subnet, move the printer to the same subnet as the computer.



The computer and the printer are on different subnets.



The computer and the printer are on the same subnet.

- **Software firewall is blocking access to the printer**

If your network uses DHCP or AutoIP to assign IP addresses to network devices, then a software firewall installed on your computer might block access to the printer after the printer is connected to the network and the printer software is installed on the computer.

Note: The software firewall included with Windows XP does not interfere with the connection to the printer. If the computer is only running the Windows XP software firewall, then you do not need to disable the firewall during software installation or assign the printer a static IP address.

To fix this problem, follow the steps under “Configuring the printer for a software firewall” on page 52.

Network settings have changed

Follow these steps to check the printer network settings listed on the HP Report page against the actual settings for the network:

1. Open the configuration utility for the network hub, switch, or router and find the network settings.
For help using the configuration utility for the network hub, switch, or router, consult the documentation that came with the hub, switch, or router.
2. Open the printer embedded Web server (EWS). For help opening the EWS, see page 50.
3. On the EWS, click the **Networking** tab.
4. Under the **Connections** heading, click **Wired (802.3)**.
5. Click the **IP Configuration** tab.
6. Enter the correct settings for network, and then click the **Apply** button.
7. Close the EWS.
8. Press the printer **Report Page** button to print an HP Report page.



9. Compare the printer network settings to the actual setting for the network. If the settings do not match, repeat steps 2 through 9.

Managing the printer on a network

The printer offers several tools to help you manage the printer on a network.

HP Report page	49
Embedded Web server (EWS)	50
Changing wireless security settings	51
Configuring the printer for a software firewall	52
Resetting the printer to factory default settings	57

HP Report page

Press the **Report Page** button to print an HP Report page.



The HP Report page supplies useful information about the printer wireless, wired, and PictBridge connections, such as the following items:

- URL: The address of the printer embedded Web server.
- Hardware address (MAC): The printer media access control (MAC) address.
- IP address: The IP address of the printer.
- Subnet mask: The subnet mask of the network to which the printer is connected.
- Default gateway: The IP address of the gateway.
- Communication mode: The wireless communication mode to which the printer is set.
- Network name (SSID): The network name of the wireless network to which the printer is connected.
- Channel: The number of the channel on which the printer wireless radio is broadcasting.
- Authentication type: The authentication protocol that the printer is using.
- Encryption: The wireless encryption strategy that the printer is using.

Embedded Web server (EWS)

The printer has an internal Web page, called the embedded Web server (EWS). You can access the EWS with an Internet browser.

To use the EWS, the printer must have a valid IP address and be on the same subnet as the computer you are using.

Follow these steps to open the EWS:

1. Press the printer **Report Page** button to print an HP Report page.



2. Find the printer URL on the HP Report page.

Note: Verify the printer URL is *something other than* **http://0.0.0.0** and that the subnet mask matches that of your computer. If either of these conditions is not true, connect an Ethernet cable to the printer and the network router, and then repeat steps 1 and 2.

3. Launch the Web browser (use either Internet Explorer 5 and higher, Netscape 4.75 and higher, or Safari).
4. Enter the printer URL in the browser address box, and then press **Enter**.



Changing wireless security settings

If you change the wireless security settings for your wireless network, you must reconfigure the printer with the new settings.

Getting started

Before reconfiguring the printer, you must find the following settings:

- Network name (SSID)
- The new wireless security settings:
 - WEP: Find the WEP key(s)
 - WPA: Find the passphrase and authentication protocol

Consult the configuration utility for the network Wireless Access Point (WAP) to find the wireless security settings.

Configuring the printer

Follow these steps to reconfigure the printer with new wireless security settings:

1. Use an Ethernet cable to connect the printer to an Ethernet port on the network, such as an available Ethernet port on a Wireless Access Point (WAP), router, hub, or wall socket.
2. Open the printer embedded Web server (EWS). For help opening the EWS, see page 50.
3. On the EWS, click the **Networking** tab.
4. Under the **Connections** heading, click **Wireless (802.11)**.
5. On the **Wireless Setup** tab, click the **Start Wizard** button.
6. Follow the onscreen instructions to enter the new settings and finish the configuration.

Configuring the printer for a software firewall

A software firewall protects a computer from unauthorized access when a computer is connected to the Internet.

Popular software firewalls include: BlackICE®, ZoneAlarm®, and Brickhouse®.

Note: Windows XP has a software firewall included. If your computer uses only the Windows XP firewall, then you do not need to follow the instructions contained in this section.

Problem

Unfortunately, a software firewall can cause two problems when using the printer on a wired or wireless network.

- **Failed installation:** A software firewall can prevent the computer from finding the printer on the network during the printer software installation process. If the computer cannot discover the printer, then the printer software cannot be installed on the computer.
- **Lost connection:** If the printer is connected to a wired or wireless network that uses DHCP or AutoIP to assign IP addresses, then if the printer IP address changes, a software firewall can prevent the computer from finding the printer on the network even if the printer software has been successfully installed on the computer.

Solution

In order for the printer to be usable on a network on which computers are protected by a software firewall, you must do the following:

1. Temporarily disable the software firewall before installing the printer software on a computer.
2. Assign the printer a static IP address.

Temporarily disabling the software firewall before installation

Before assigning the printer a static IP address and then installing the printer software on a computer, temporarily disable the software firewall on the computer. For instructions about disabling the software firewall, see the documentation that came with the software firewall.

Whenever the software firewall is disabled, HP strongly recommends that the following items be installed on the computer:

- A hardware device, such as a gateway, that provides firewall protection between the computer and the Internet
- An up-to-date anti-virus software program

For maximum virus protection while the firewall is disabled, disconnect the computer or router from the Internet while you install the printer software on the computer. After the printer software is installed, you can reconnect the computer or router to the Internet.

After disabling the software firewall, follow the steps for assigning the printer a static IP address.

Assigning the printer a static IP address

Getting ready

Before assigning the printer a static IP address, you must find the following information about your network:

- The IP address range of the network DHCP server
- Subnet mask
- Gateway

To find this information, see the configuration utility for the network router or switch. Otherwise, see the documentation that came with the network router or switch.

The static IP address must be outside the range of IP addresses that your network assigns to devices on the network.

For example, a network might use DHCP to assign IP addresses that range from 1.1.1.1 to 1.1.1.100. In this case, 1.1.1.25 would not be a good static IP address to assign to the printer since it falls in the range of IP addresses assigned by the network. However, 1.1.1.101 would be a good static IP address because it falls outside the range of IP addresses assigned by the network.

Assigning the static IP address

Follow these steps to assign the printer a static IP address:

1. Use an Ethernet cable to connect the printer to an Ethernet port on the network, such as an available Ethernet port on a Wireless Access Point (WAP), router, hub, or wall socket.
2. When the Network light on the front of the printer is turned on and solid, press the **Report Page** button to print an HP Report page.



3. Find the printer URL on the HP Report page.
4. Launch the computer Internet browser, and then enter the printer URL listed on the HP Report page in the address box to open the printer embedded Web server (EWS).
5. On the EWS, click the **Networking** tab.
6. Under the **Connections** heading, click one of the following options:
 - If you are connecting the printer to a wired Ethernet network, click **Wired (802.3)**.
 - If you are connecting the printer to a wireless network, click **Wireless (802.11)**, and then click the **IP Configuration** tab.
7. Under the **IP Address Configuration** heading, select **Manual IP**, and then enter the static IP address you want to assign to the printer, the subnet mask, and default gateway.

Note: Remember, the static IP address must be outside the range of IP addresses assigned by the network. Also, if you do not have a subnet mask or default gateway to enter, then enter 0.0.0.0 for each item.

Go to the next page...

8. Under the **DNS Address Configuration** heading, enter the preferred and alternate DNS servers.
Note: If you do not have preferred and alternate DNS servers to enter, then enter 0.0.0.0 for each item.
9. After entering all of the information, click the **Apply** button, and then close the EWS.
10. Open the configuration utility for the software firewall, and then enter the IP address that you assigned to the printer in the list of accepted IP addresses.
For help with the software firewall configuration utility, see the documentation that came with the software firewall.

After assigning the printer a static IP address, follow the printer software installation instructions appropriate for how you want to connect the printer to the network:

- Wireless connection: go to page 9.
- Wired Ethernet connection: go to page 37.

Note: After installing the printer software, re-enable the software firewall on the computer.

Resetting the printer to factory default settings

Resetting the printer to the factory default settings clears all the settings from the printer memory for your network. This should only be done as a last resort when troubleshooting the printer.

Resetting the printer to the factory default settings may require you to reinstall the printer software. Additionally, you will also have to reconfigure the printer security settings.

The printer default settings are:

Option	Default setting
Communication mode	Ad hoc
Network name (SSID)	hpsetup
Encryption	None
IP address	Automatic
Wireless radio	On
EWS administrator password	[blank]

Follow these steps to reset the printer to the factory default settings:

1. Verify that the printer is powered on.
2. Press and hold down the **Report Page** button.
3. While holding down the **Report Page** button, press the **Cancel** button three times.
4. Release the **Report Page** button.

Glossary

802.11g and b: 802.11g and 802.11b are wireless standards that communicate in the 2.4 GHz band. 802.11g provides speeds up to 54 Mbps. 802.11b provides speeds up to 11 Mbps.

Ad hoc network: A type of wireless network in which devices directly communicate with each other rather than through a Wireless Access Point (WAP). Ad hoc networks are typically small and simple (for example, two wireless PCs or a wireless PC and a wireless printer). Performance on these types of networks can degrade if more than six devices are on the network. Ad hoc networks are also known as “computer-to-computer networks,” “peer-to-peer networks,” “independent basic service stations (IBSS),” or “direct-connect wireless networks.”

Authentication: Authentication is a wireless network security strategy. On a network with authentication, devices use a shared key as a password and communicate only with devices that know the key. Unlike WEP, authentication does not encrypt the data sent between wireless devices. However, authentication can be used in conjunction with WEP. Authentication keys and WEP keys can be identical.

Channel: One of several pre-set frequencies at which 802.11-enabled devices communicate in order to reduce interference. The number of channels available varies by country/region.

Embedded Web server (EWS): The printer embedded Web server is a networking configuration utility that is accessed through an Internet browser. For more information, see “Embedded Web server (EWS)” on page 50.

Encryption: A network security strategy that encodes the data sent across a wireless network making the data unintelligible to eavesdroppers. The printer supports WEP and WPA.

Encryption keys: A sequence of characters or digits that a wireless device uses to encode data. Encryption keys can be static (as they are in WEP) or dynamic (as they are in WPA).

Ethernet: A popular form of wired computer networking for Local Area Networks.

Ethernet cable: There are two types of Ethernet cables. A straight-through cable is the most common and is used to connect devices on a network to a hub or router. A crossover cable is used to connect two devices that have Ethernet ports but that are not hubs or routers.

Firewall: A combination of hardware and software tools that protect a network from unwanted entry.

Gateway: A dedicated device (router or computer) that connects two different networks. For example, a computer on an Ethernet network may act as a gateway between the network and the Internet.

Hub: A simple device that acts as the center of an Ethernet network. Other devices on the network are connected to the hub.

IP address (Internet Protocol address): A unique number that identifies a device on a network. The IP address is often automatically assigned by DHCP or AutoIP. However, a device can be manually assigned a static IP address.

Infrastructure network: A type of wireless network in which devices communicate with each other through a Wireless Access Point (WAP), such as a wireless network hub, router, or gateway.

Network card: A network card enables a computer to communicate on a wired or wireless network.

Network name: A network name is an alphanumeric, case-sensitive character string that provides basic access control to a wireless network. A network name is also known as a "Service Set Identifier (SSID)."

Subnet: A small network that acts as part of a large network. It is recommended that the printer and the computers that use the printer all be on the same subnet.

Subnet mask: A number that identifies the IP addresses that belong to a subnet.

Switch: A network device that manages network traffic in order to minimize collisions and maximize speed.

USB flash drive: A USB flash drive is a portable storage device that plugs into a USB port. USB flash drives are sometimes called “thumbdrives” or “jumpdrives.”

WEP: Wired Equivalent Privacy (WEP) provides security by encrypting data sent over radio waves from one wireless device to another wireless device. WEP encodes the data sent across the network making the data unintelligible to eavesdroppers. Only devices that share the same WEP settings as the printer will be able to communicate with the printer. WEP depends on encryption keys that are static and provides less security than WPA.

WEP key: A WEP key, or encryption key, is a sequence of alphanumeric characters or hexadecimal digits. After creating a WEP key, you must remember it or store it in a secure location. You may not be able to retrieve the WEP key if you lose it. A WEP key is either 64- or 128-bits long. The first 24 bits of the key are provided automatically. When creating the WEP key, the person creating the key provides the remaining bits (40 bits in the case of a 64-bit key, or 104 bits in the case of a 128-bit key).

Wireless Access Point (WAP): A Wireless Access Point (WAP) is a device through which devices (for example, computers and printers) on an infrastructure wireless network communicate with one another. A WAP is also called a “base station.”

Wireless Network Key: On a computer that is running Windows XP service pack 2, you can use a USB flash drive to create a Wireless Network Key. A Wireless Network Key allows you to easily configure wireless devices for a wireless network. For more information, see “Infrastructure network with a Wireless Network Key” on page 10.

Wireless profile: A wireless profile is a collection of wireless network settings that applies to a particular wireless network. For example, a wireless LAN card can have one profile for a home network and another profile for an office network. When installing a device on a network, be sure to select the appropriate profile.

WPA: Wi-Fi Protected Access (WPA) provides security by encrypting data sent over radio waves from one wireless device to another wireless device and by controlling access to network resources through authentication protocols. Only devices that share the same WPA settings as the printer will be able to communicate with the printer. WPA uses encryption keys that change frequently. WPA provides better security than WEP.



i n v e n t

繁體中文

2004 年 5 月，第 1 版

版權所有 2004 Hewlett-Packard Development Company, L.P.。

通告

除版權法允許之外，未獲得事先書面許可，不得進行複製、改編或翻譯。

此處包含的資訊如有更改，恕不另行通知。

HP 產品與服務的唯一擔保已在這些產品與服務隨附的書面保固聲明中闡明。此處的任何資訊將不會構成額外擔保的制定。HP 將不會對本文包含的技術或編輯錯誤或者疏忽負責。

聲明

Microsoft®、MS-DOS 與 Windows 是 Microsoft Corporation 的註冊商標。

Mac、Macintosh、AppleTalk 與 Mac OS 是 Apple Computer, Inc. 在美國及其他國家註冊的商標。

本產品包含由 OpenSSL Project 研發，用於 OpenSSL Toolkit 的軟體 (<http://www.openssl.org>)。

Wi-Fi® 與 Wi-Fi 徽標是 Wi-Fi Alliance 的註冊商標。

PictBridge 與 PictBridge 徽標是 Camera & Imaging Products Association (CIPA) 的商標。

連線 HP Deskjet 6800 series 印表機

感謝您購買 HP Deskjet 6800 series 印表機！



本指南包含下列有關連線印表機的資訊：

將印表機連接到無線網路..... 3



步驟 1：查找網路基本無線設定.....	5
步驟 2：查找網路無線安全性設定.....	7
步驟 3：在無線連接中安裝印表機軟體.....	9
無線連接的故障排除.....	27

將印表機連接到有線乙太網路..... 36



步驟 1：將印表機連接到網路.....	37
步驟 2：在有線乙太網連接上安裝印表機軟體.....	39
有線乙太網連接的故障排除.....	42

在網路上管理印表機..... 48

「HP 報告」頁.....	49
內嵌式 Web 伺服器 (EWS).....	50
變更無線安全性設定.....	51
為軟體防火牆組態印表機.....	52
將印表機重設為出廠設定值.....	57

詞彙表..... 58

將印表機連接到無線網路



使用入門

是否已安裝印表機硬體？

在將印表機連接到網路前，請按照印表機隨附的安裝海報上的指示安裝印表機硬體。

網路上的電腦是否有軟體防火牆保護？

若網路上的任何一台電腦有軟體防火牆保護，在將印表機連接到網路前，請按照第 52 頁的「為軟體防火牆組態印表機」中的步驟執行。

連接印表機

步驟 1：查找網路基本無線設定

您需要知道網路的**網路名稱 (SSID)** 和**通訊模式**。請參閱 WAP 或電腦網路卡的組態公用程式，以查找這些設定。

要獲得更多資訊，請參閱第 5 頁的「步驟 1：查找網路基本無線設定」。

步驟 2：查找網路無線安全性設定

您需要知道您網路的安全性類型：WPA、WEP，或無。

要獲得更多資訊，請參閱第 7 頁的「步驟 2：查找網路無線安全性設定」。

下頁繼續 ...

步驟 3：在無線連接中安裝印表機軟體

在電腦上安裝印表機軟體的步驟將根據作業系統和通訊模式而有所不同。

要獲得安裝指示，請參閱第 9 頁的「步驟 3：在無線連接中安裝印表機軟體」。



無線網路金鑰？若您使用 USB 快閃磁碟機作為「無線網路金鑰」為您的無線網路組態裝置，請跳過步驟 1 和 2，然後參閱第 10 頁的「具備無線網路金鑰的架構網路」。

步驟 1：查找網路基本無線設定

要在無線網路上安裝印表機，您需要知道網路的**通訊模式**和**網路名稱 (SSID)**。要查找這些設定，請參閱電腦網路卡或 WAP 的組態公用程式。

通訊模式

網路通訊模式有兩種選項：

- 架構
- 點對點

架構（建議使用）

若您要使用 WAP 將印表機連接到網路，請將印表機設定為架構通訊模式。在「架構」模式中，印表機將會透過 WAP 與網路上的其他裝置通訊，不論這些裝置是有線還是無線。WAP 通常作為小型網路上的路由器或閘道。



點對點或電腦對電腦網路

若您不要使用 WAP 將印表機連接到無線網路，請將印表機設定為點對點，或「電腦對電腦」通訊模式。在點對點模式中，印表機將直接與其他無線裝置通訊。



網路名稱 (SSID)

網路名稱，或「服務設定識別 (SSID)」，用於識別特殊無線網路。要在網路上操作，裝置必須知道網路的網路名稱。

更多資訊

要獲得關於無線連線概念的更多資訊，請參閱線上使用指南。線上使用指南會在您將印表機軟體安裝到電腦後提供。

步驟 2：查找網路無線安全性設定

印表機**必須**與網路上的其他裝置共用相同的網路無線安全性設定。若印表機沒有正確的無線安全性設定，網路上的其他裝置將無法使用印表機。

要查找無線網路的安全性設定，請參閱電腦無線網路卡或 WAP 的組態公用程式。

無線安全性的類型

您可以將印表機組態為使用下列無線安全性選項：

- 開放式系統（無安全性）
- 有線等同保密 (WEP)
- 受 Wi-Fi 保護的存取 (WPA)

開放式系統（無安全性）

在開放式系統中，網路不需要授權或加密。

要將印表機組態為在開放式系統上操作，您需要知道網路通訊模式和網路名稱 (SSID)。要獲得關於如何查找這些項目的說明，請參閱第 5 頁的「步驟 1：查找網路基本無線設定」。

有線等同保密 (WEP)

有線等同保密 (WEP) 透過加密在無線電波上從一台無線裝置傳送到另一台無線裝置的資料提供安全性。啓用 WEP 網路上的裝置使用 WEP 金鑰編碼資料。

要將印表機組態為在使用 WEP 的網路上操作，您必須知道網路所使用的 WEP 金鑰。

受 Wi-Fi 保護的存取 (WPA)

受 Wi-Fi 保護的存取 (WPA) 透過執行下列操作提供安全性：

- 加密在無線電波上從一台無線裝置傳送到另一台無線裝置的資料
- 透過驗證協定控制網路資源的存取

要將印表機組態為在使用 WPA 的網路上操作，您必須知道網路所使用的密碼和驗證協定。

步驟 3：在無線連接中安裝印表機軟體

軟體防火牆？若您的電腦有軟體防火牆保護，請在安裝印表機軟體前，先按照第 52 頁的「為軟體防火牆組態印表機」中的步驟執行。

Windows



無線網路金鑰？若您使用 USB 快閃磁碟機作為「無線網路金鑰」為您的無線網路組態裝置，請參閱第 10 頁的「具備無線網路金鑰的架構網路」。

架構網路（建議使用）

1. 使用乙太網纜線將印表機連接到網路上的乙太網埠，例如：WAP、路由器、集線器或牆上插座上的可用乙太網埠。
2. 將印表機軟體 CD 放入電腦的 CD-ROM 磁碟機，然後按照畫面上的指示執行。
3. 在**連接類型**畫面上，選取**無線**，然後按一下下一步。
4. 按照畫面上的指示完成軟體安裝。

附加電腦

您必須在每一台要使用該印表機的電腦上安裝印表機軟體。請按照上面所說明的步驟 2 至 4，在其他網路電腦上安裝印表機軟體。

只有在網路上第一次安裝期間，安裝印表機軟體和組態其無線設定時才需要使用乙太網纜線。在網路的其他電腦上安裝印表機將不需要使用乙太網纜線。

具備無線網路金鑰的架構網路

準備就緒

若您使用 USB 快閃磁碟機作為「無線網路金鑰」，這將是在無線網路上組態裝置的快速與便利方式。



要使用 USB 快閃磁碟機作為「無線網路金鑰」組態印表機，您必須擁有具備 Windows XP Service Pack 2 的電腦以及已安裝無線網路卡。要取得 Windows XP Service Pack 2，請瀏覽 Microsoft 網站：www.microsoft.com。

使用無線網路金鑰

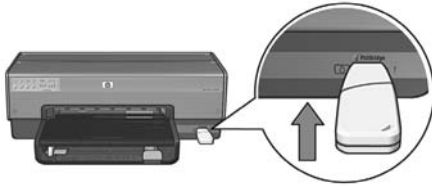
要使用「無線網路金鑰」為您的無線網路組態印表機，請：

1. 在 Windows 桌面上，按一下**開始**、依序選取**程式集**、**附屬應用程式**和**通訊**，然後按一下**無線網路安裝**。
2. 在「無線網路安裝精靈」上，輸入無線網路的網路名稱，然後執行下列操作之一：
 - 要讓 Windows 建立「無線網路金鑰」，請選取自動選項。
 - 要自己建立「無線網路金鑰」，則選取手動選項。

註：若您網路上的路由器不支援「無線網路金鑰」，您必須選取手動選項。若您選取手動選項，您必須知道無線網路安全性設定值。
3. 按照畫面上的指示執行，直到系統提示您從電腦取下「無線網路金鑰」。

下頁繼續 ...

4. 開啓印表機電源，將「無線網路金鑰」插入印表機前方的 PictBridge USB 埠。



5. 等待印表機指示燈同時閃爍三次。
6. 將「無線網路金鑰」插入電腦，然後按照畫面上的指示執行以完成無線網路安裝精靈。
7. 將印表機軟體 CD 放入電腦的 CD-ROM 磁碟機，然後按照畫面上的指示執行。
8. 在**連接類型**畫面上，選取**無線**，然後按一下**下一步**。
9. 按照畫面上的指示完成軟體安裝。

附加電腦

您必須在每一台要使用該印表機的電腦上安裝印表機軟體。請按照上面所說明的步驟 7 至 9，在其他網路電腦上安裝印表機軟體。

點對點

點對點網路上的裝置必須：

- 與 802.11b 相容
- 以**點對點** 作為通訊模式
- 具有相同的網路名稱 (SSID)
- 在同個子網路上
- 在同個通道上
- 具有相同的無線安全性設定

要連接使用廠家預設點對點網路設定值的印表機：

1. 開啓無線網路卡的組態公用程式，然後執行下列操作：
 - a. 使用下列值建立無線設定檔：
 - 通訊模式：**點對點**
 - 網路名稱 (SSID)：**hp 設定**
 - 安全性（加密）：**停用**
 - b. 啓動設定檔。
2. 等待兩分鐘，讓印表機取得 IP 位址，然後按下 **報告頁** 按鈕列印「HP 報告」頁。



3. 在「HP 報告」頁上，檢查下列設定值：
 - 網路名稱 (SSID) 為 **hp 設定**
 - 通訊模式為**點對點**
 - 子網路遮罩和通道與您無線網路的符合。
 - IP 位址不是 **0.0.0.0**

若上述其中一個條件為「否」，請刪除在步驟 1 中建立的無線設定檔，然後重複執行步驟 1 至 3。

下頁繼續 ...

4. 將印表機軟體 CD 放入電腦的 CD-ROM 磁碟機，然後按照畫面上的指示執行。
5. 在**連接類型**畫面上，選取**無線**，然後按一下**下一步**。
6. 按照畫面上的指示完成軟體安裝。

附加電腦

您必須在每一台要使用該印表機的電腦上安裝印表機軟體。請按照上面所說明的步驟 4 至 6，在其他網路電腦上安裝印表機軟體。

進階安裝

要獲得關於將印表機組態為在 **hp 設定** 廠家設定值以外的點對點網路上操作的指示，請瀏覽 HP 網站：www.hp.com/support。

802.11g

在點對點模式中，印表機的預設設定將是 802.11b，以便可以與更多類型的 802.11 裝置相容。若您的網路只使用 802.11g 裝置組成，您可能要將印表機組態為在 802.11g 模式中操作，從而優化網路性能。

要在連接到點對點網路時將印表機組態為在 802.11g 模式中操作：

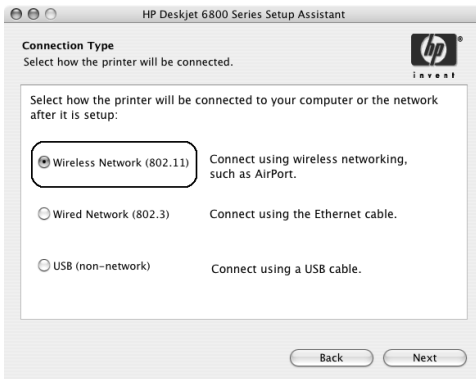
1. 開啓印表機的內嵌式 Web 伺服器 (EWS)。若需要關於如何開啓 EWS 的說明，請參閱第 50 頁。
2. 按一下 **Networking (連線)** 標籤。
3. 在 **Connections (連接)** 標題下，按一下 **Wireless (802.11) (無線 802.11)**。
4. 按一下 **Advanced (進階)** 標籤。
5. 捲動到網頁的底部，然後取消選取 **In an ad hoc network use 802.11b behavior (在點對點網路中使用 802.11b 特性)** 核取方塊。
6. 按一下 **Apply (套用)** 按鈕，然後關閉 EWS。

Macintosh

Mac OS X

架構網路（建議使用）

1. 使用乙太網纜線將印表機連接到網路上的乙太網埠，例如：WAP、路由器、集線器或牆上插座上的可用乙太網埠。
2. 將印表機軟體 CD 放入電腦的 CD-ROM 磁碟機，然後連按 CD 桌面圖像。
3. 連按 **HP Deskjet 6800 installer**（**HP Deskjet 6800 安裝器**）圖像，然後按照畫面上的指示執行。
4. 在 **Connection Type**（**連接類型**）畫面上，選取 **Wireless Network (802.11)**（**無線網路 802.11**），然後按一下 **Next**（**下一步**）。



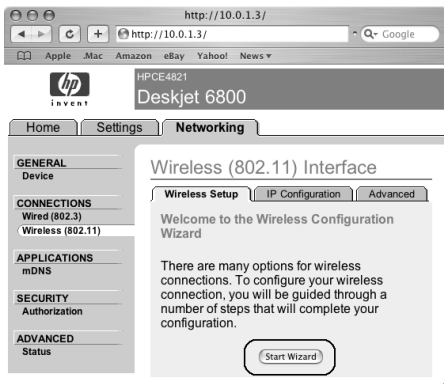
5. 繼續在下來的幾個畫面中執行以查找網路上的印表機。

下頁繼續 ...

- 在 **Confirm or Change Settings** (確認或變更設定) 畫面上，按一下 **Change Settings** (變更設定) 按鈕。



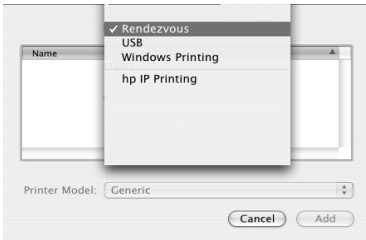
- 在 **Change Settings** (變更設定) 畫面上，按一下 **Change Settings** (變更設定) 按鈕。
印表機內嵌式 Web 伺服器 (EWS) 將會開啓。
- 在 EWS 上，按一下 **Networking** (連線) 標籤。
- 在 **Connections** (連接) 標題下，按一下 **Wireless (802.11)** (無線 802.11)。
- 在 **Wireless (802.11) Interface** (無線 802.11 介面) 畫面上，按一下 **Start Wizard** (啟動精靈) 按鈕，以啟動「Wireless Configuration Wizard」(無線組態精靈)。



下頁繼續 ...

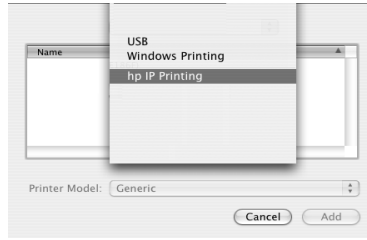
11. 按照畫面上的指示組態印表機設定。
12. 完成 **Wireless Configuration Wizard**（無線組態精靈）後，關閉 EWS。
13. 在 **Confirm or Change Settings**（確認或變更設定）畫面上，按一下 **Next**（下一步）。
14. 按照畫面上的指示完成印表機軟體安裝。
15. 在 **Add Printer**（加入印表機）畫面上，按一下 **Open Print Center**（開啓 Print Center）。
16. 按一下 **Add Printer**（加入印表機）。
17. 根據您使用的 Mac OS X 版本，執行下列操作之一：

Mac OS X v 10.2.3 和之後版本



選取 **Rendezvous**。

Mac OS X v 10.2.2 和更低版本



選取 **HP IP Printing**（HP IP 列印），然後按一下 **Discover** 按鈕。

18. 選取印表機，然後按一下 **Add**（加入）按鈕。
19. 關閉 **Print Center**。

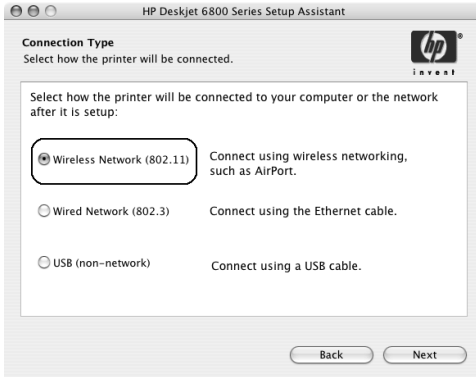
附加電腦

要在每一台將使用該印表機的電腦上安裝印表機軟體，請：

1. 將印表機軟體 CD 放入電腦的 CD-ROM 磁碟機，然後連按 CD 桌面圖像。
2. 連按 **HP Deskjet 6800 installer**（HP Deskjet 6800 安裝器）圖像，然後按照畫面上的指示執行。
3. 在 **HP Deskjet 6800 series printer Setup Assistant**（HP Deskjet 6800 series 印表機安裝助理）出現時將它關閉。
由於印表機已為網路組態妥當，因此您不需要使用安裝助理。
4. 開啓 **Print Center**，然後按照上面所指示的步驟 15 至 19 執行。

點對點或電腦對電腦

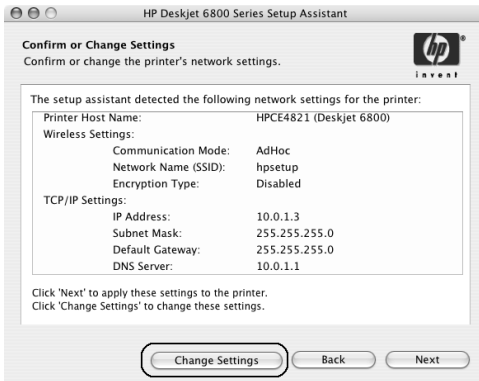
1. 使用乙太網纜線將印表機連接到電腦。
2. 將印表機軟體 CD 放入電腦的 CD-ROM 磁碟機，然後連按 CD 桌面圖像。
3. 連按 **HP Deskjet 6800 installer**（**HP Deskjet 6800 安裝器**）圖像，然後按照畫面上的指示執行。
4. 在 **Connection Type**（**連接類型**）畫面上，選取 **Wireless Network (802.11)**（**無線網路 802.11**），然後按一下 **Next**（**下一步**）。



5. 繼續在下來的幾個畫面中執行以查找網路上的印表機。

下頁繼續 ...

6. 在 **Confirm or Change Settings**（確認或變更設定）畫面上，按一下 **Change Settings**（變更設定）按鈕。

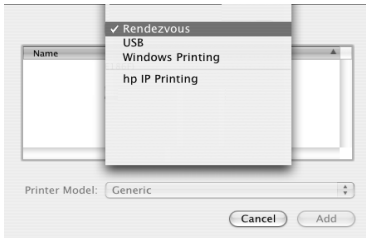


7. 在 **Change Settings**（變更設定）畫面上，按一下 **Change Settings**（變更設定）按鈕。
- 印表機內嵌式 Web 伺服器 (EWS) 將會開啓。
8. 在 EWS 上，按一下 **Networking**（連線）標籤。
9. 在 **Connections**（連接）標題下，按一下 **Wireless (802.11)**（無線 802.11）。
10. 在 **Wireless (802.11) Interface**（無線 802.11 介面）畫面上，按一下 **Advanced**（進階）標籤。
11. 輸入您要連接印表機的無線網路的無線網路設定。
- 在 **Network Name**（網路名稱）標題下，將網路名稱（例如：「MyNetwork」）輸入 **SSID** 方塊。
 - 在 **Network Settings**（網路設定）標題下：
 - 選取 **Ad Hoc**（點對點）。
 - 從 **Channel**（通道）下拉清單選取通道。
 - 輸入網路無線安全性設定。
12. 輸入無線安全性設定後，按一下 **Apply**（套用）按鈕，然後關閉 EWS。
13. 在 **Add Printer**（加入印表機）畫面上，按一下 **Open Print Center**（開啓 Print Center）。
14. 按一下 **Add Printer**（加入印表機）。

下頁繼續 ...

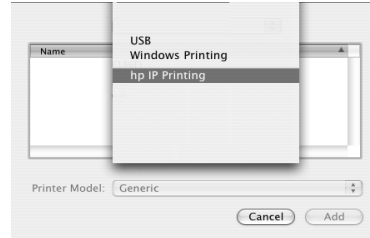
15. 根據您使用的 Mac OS X 版本，執行下列操作之一：

Mac OS X v 10.2.3 和之後版本



選取 **Rendezvous**。

Mac OS X v 10.2.2 和更低版本



選取 **HP IP Printing (HP IP 列印)**，然後按一下 **Discover** 按鈕。

16. 選取印表機，然後按一下 **Add (加入)** 按鈕。

17. 關閉 **Print Center**。

附加電腦

要在每一台將使用該印表機的電腦上安裝印表機軟體，請：

1. 將印表機軟體 CD 放入電腦的 CD-ROM 磁碟機，然後連按 CD 桌面圖像。
2. 連按 **HP Deskjet 6800 installer (HP Deskjet 6800 安裝器)** 圖像，然後按照畫面上的指示執行。
3. 在 **HP Deskjet 6800 series printer Setup Assistant (HP Deskjet 6800 series 印表機安裝助理)** 出現時將它關閉。
由於印表機已為網路組態妥當，因此您不需要使用安裝助理。
4. 開啓 **Print Center**，然後按照上面所指示的步驟 13 至 17 執行。

802.11g

在點對點模式中，印表機的預設設定將是 802.11b，以便可以與更多類型的 802.11 裝置相容。若您的網路只使用 802.11g 裝置組成，您可能要將印表機組態為在 802.11g 模式中操作，從而優化網路性能。

要在連接到點對點網路時將印表機組態為在 802.11g 模式中操作，請按照第 13 頁的「802.11g」中的步驟執行。

Mac OS X Classic

1. 請按照第 14 頁中的步驟在 Mac OS X 電腦上安裝印表機軟體。
2. 開啓 **Chooser**（選配器），然後選取 **HP Inkjet 6.x** 圖像。

註：若您沒有看到 **HP Inkjet 6.x** 圖像，請將印表機軟體 CD 放入電腦 CD-ROM 磁碟機，然後按照畫面上的指示安裝 Mac OS 9 印表機驅動程式。接著，重複執行步驟 1。

3. 當系統詢問您是否要電腦查找 TCP/IP 網路印表機時，請按一下 **Yes**（是）。
4. 選取印表機，然後關閉 **Chooser**（選配器）。

Mac OS 9

沒有加密的架構網路

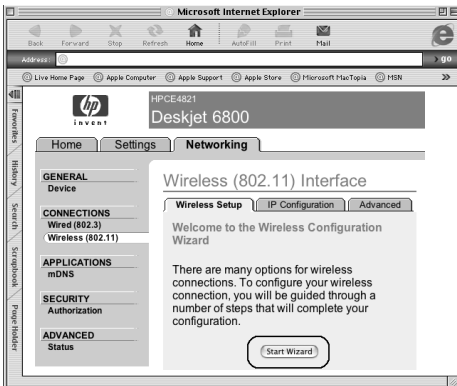
1. 使用乙太網纜線將印表機連接到網路上的乙太網埠，例如：WAP、路由器、集線器或牆上插座上的可用乙太網埠。
2. 檢查「網路」指示燈是否亮起。若沒有，請檢查纜線的連接。



3. 按下印表機**報告頁**按鈕列印「HP 報告」頁。



4. 啓動電腦網際網路瀏覽器，然後在位址方塊中輸入「HP 報告」頁上列出的印表機 URL，以開啓印表機內嵌式 Web 伺服器 (EWS)。
5. 在 EWS 上，按一下 **Networking (連線)** 標籤。
6. 在 **Connections (連接)** 標題下，按一下 **Wireless (802.11) (無線 802.11)**。
7. 在 **Wireless (802.11) Interface (無線 802.11 介面)** 畫面上，按一下 **Start Wizard (啓動精靈)** 按鈕，以啓動「Wireless Configuration Wizard」(無線組態精靈)。



下頁繼續 ...

8. 按照畫面上的指示組態印表機設定。
9. 完成 **Wireless Configuration Wizard**（無線組態精靈）後，關閉 EWS。
10. 從印表機拔下乙太網纜線以啓用無線通訊。
11. 將印表機軟體 CD 放入電腦的 CD-ROM 磁碟機，然後連按 CD 桌面圖像。
12. 連按 **HP Deskjet 6800 installer**（HP Deskjet 6800 安裝器）圖像，然後在電腦提示時重新啓動電腦。
13. 開啓 **Chooser**（選配器），然後選取 **HP Inkjet 6.x** 圖像。
14. 當系統詢問您是否要電腦查找 TCP/IP 網路印表機時，請按一下 **Yes**（是）。
15. 選取印表機，然後關閉 **Chooser**（選配器）。

附加電腦

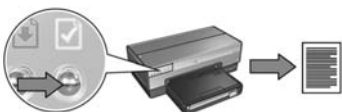
您必須在每一台要使用該印表機的電腦上安裝印表機軟體。請按照上面所說明的步驟 11 至 15，在其他網路電腦上安裝印表機軟體。

有加密的架構網路

1. 開啓 **AirPort Admin Utility** (**AirPort 管理員公用程式**)，然後執行下列操作：
 - a. 按一下 **Base Station** (**基地站**)，然後選取 **Equivalent Network** (**等同網路密碼**)。
 - b. 將 WEP 金鑰寫在紙上。
 - c. 關閉 **AirPort Admin Utility** (**AirPort 管理員公用程式**)。
2. 使用乙太網纜線將印表機連接到網路上的乙太網埠，例如：WAP、路由器、集線器或牆上插座上的可用乙太網埠。
3. 檢查「網路」指示燈是否亮起。若沒有，請檢查纜線的連接。



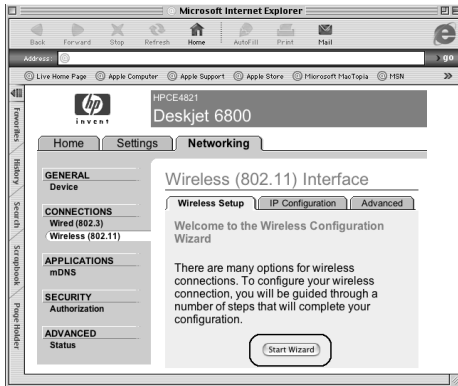
4. 按下印表機**報告頁**按鈕列印「HP 報告」頁。



5. 啓動電腦網際網路瀏覽器，然後在位址方塊中輸入「HP 報告」頁上列出的印表機 URL，以開啓印表機內嵌式 Web 伺服器 (EWS)。
6. 在 EWS 上，按一下 **Networking** (**連線**) 標籤。
7. 在 **Connections** (**連接**) 標題下，按一下 **Wireless (802.11)** (**無線 802.11**)。

下頁繼續 ...

- 在 **Wireless (802.11) Interface** (無線 802.11 介面) 畫面上，按一下 **Start Wizard** (啟動精靈) 按鈕，以啟動「Wireless Configuration Wizard」(無線組態精靈)。



- 按照畫面上的指示組態印表機設定，包括您在步驟 1 中寫下的 WEP 金鑰。
- 完成 **Wireless Configuration Wizard** (無線組態精靈) 後，關閉 EWS。
- 從印表機拔下乙太網纜線以啟用無線通訊。
- 將印表機軟體 CD 放入電腦的 CD-ROM 磁碟機，然後連按 CD 桌面圖像。
- 連按 **HP Deskjet 6800 installer** (HP Deskjet 6800 安裝器) 圖像，然後在電腦提示時重新啟動電腦。
- 開啓 **Chooser** (選配器)，然後選取 **HP Inkjet 6.x** 圖像。
- 當系統詢問您是否要電腦查找 TCP/IP 網路印表機時，請按一下 **Yes** (是)。
- 選取印表機，然後關閉 **Chooser** (選配器)。

附加電腦

您必須在每一台要使用該印表機的電腦上安裝印表機軟體。請按照上面所說明的步驟 12 至 16，在其他網路電腦上安裝印表機軟體。

點對點或電腦對電腦

1. 按下印表機報告頁按鈕列印「HP 報告」頁。



2. 開啓 **AirPort Setup Assistant** (**AirPort 安裝助理**)，然後按照畫面上的指示執行，以加入現有的無線網路。使用 **hpsetup** (**hp 設定**) 作為要加入的現有網路。
3. 查找「HP 報告」頁上列出的 URL。
4. 啓動電腦網際網路瀏覽器，然後在位址方塊中輸入「HP 報告」頁上列出的印表機 URL，以開啓印表機內嵌式 Web 伺服器 (EWS)。
5. 在 EWS 上，按一下 **Networking** (**連線**) 標籤。
6. 在 **Connections** (**連接**) 標題下，按一下 **Wireless (802.11)** (**無線 802.11**)。
7. 在 **Wireless (802.11) Interface** (**無線 802.11 介面**) 畫面上，按一下 **Advanced** (**進階**) 標籤。
8. 輸入您要連接印表機的無線網路的無線網路設定。
 - 在 **Network Name** (**網路名稱**) 標題下，將網路名稱 (例如：「MyNetwork」) 輸入 **SSID** 方塊。
 - 在 **Network Settings** (**網路設定**) 標題下：
 - 選取 **Ad Hoc** (**點對點**)。
 - 從 **Channel** (**通道**) 下拉清單選取通道。
 - 輸入網路無線安全性設定。
9. 輸入無線安全性設定後，按一下 **Apply** (**套用**) 按鈕，然後關閉 EWS。
10. 開啓 **AirPort Setup Assistant** (**AirPort 安裝助理**)，然後將電腦重置為原來的 AirPort 組態。

下頁繼續 ...

11. 將印表機軟體 CD 放入電腦的 CD-ROM 磁碟機，然後連按 CD 桌面圖像。
12. 連按 **HP Deskjet 6800 installer**（**HP Deskjet 6800 安裝器**）圖像，然後在電腦提示時重新啟動電腦。
13. 開啓 **Chooser**（**選配器**），然後選取 **HP Inkjet 6.x** 圖像。
14. 當系統詢問您是否要電腦查找 TCP/IP 網路印表機時，請按一下 **Yes**（**是**）。
15. 選取印表機，然後關閉 **Chooser**（**選配器**）。

附加電腦

您必須在每一台要使用該印表機的電腦上安裝印表機軟體。請按照上面所說明的步驟 11 至 15，在其他網路電腦上安裝印表機軟體。

802.11g

在點對點模式中，印表機的預設設定將是 802.11b，以便可以與更多類型的 802.11 裝置相容。若您的網路只使用 802.11g 裝置組成，您可能要將印表機組態為在 802.11g 模式中操作，從而優化網路性能。

要在連接到點對點網路時將印表機組態為在 802.11g 模式中操作，請按照第 13 頁的「802.11g」中的步驟執行。

無線連接的故障排除

軟體安裝期間

在軟體安裝過程中，安裝精靈會搜尋印表機兩次，一次是在將乙太網纜線連接到印表機時，另一次則在取下乙太網纜線後。

電腦在連接乙太網纜線時找不到印表機

若電腦在連接乙太網纜線時找不到印表機，請在調查本節中的任何主題前，先檢查下列事項：

- 電腦和印表機的所有纜線連接都牢固。
- 網路可正常操作，而且網路集線器、交換器、路由器，或 WAP 電源已開啓。
- 印表機電源已開啓，進紙匣中已裝入紙張，而且已正確安裝列印墨水匣。
- 所有應用程式，包括病毒保護程式和個人防火牆都已關閉或停用。

若您更正上述任何一項，請嘗試再次執行安裝精靈。

若尚未連接，請連接乙太網纜線。

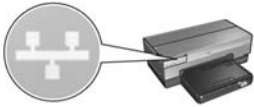
將乙太網纜線連接到印表機對於成功將印表機組態為在無線網路上操作是非常重要的。

使用乙太網纜線將印表機連接到網路上的乙太網埠，例如：WAP、路由器、集線器或牆上插座上的可用乙太網埠。

連接纜線後，重新執行安裝精靈。當系統在安裝過程中提示您時，請取下乙太網纜線。

檢查「網路」指示燈

檢查印表機前方的「網路」指示燈。若「網路」指示燈沒有亮起，則表示印表機尚未連接到網路。



檢查纜線連接是否牢固。若纜線連接牢固，按下印表機前方的**報告頁**按鈕，列印「HP 報告」頁。



然後嘗試下列解決方法之一，將印表機連接到網路。

- **停用電腦上執行的任何軟體防火牆**

在安裝印表機軟體的過程中，軟體防火牆會阻止電腦查找網路上的印表機。若電腦無法找到印表機，印表機軟體將無法安裝到電腦上。

若電腦具有安裝 Windows XP 時隨附的防火牆以外的軟體防火牆（例如：BlackICE[®]、ZoneAlarm[®] 或 Brickhouse[®]），請參閱防火牆隨附的說明文件以獲得有關停用該防火牆的說明。

註：Windows XP 隨附的軟體防火牆不會對印表機的連接造成干擾。若電腦僅執行 Windows XP 軟體防火牆，您將不需要在安裝軟體或在為印表機指定一個靜態 IP 位址期間停用防火牆。

在電腦上安裝印表機軟體前，請在電腦上暫時停用軟體防火牆，然後為印表機指定一個靜態 IP 位址。在電腦上安裝印表機軟體後，重新啟動防火牆。

要獲得關於將印表機連接到有軟體防火牆保護的電腦的指示，請參閱第 52 頁的「為軟體防火牆組態印表機」。

- 將印表機和電腦放在同個子網路上

子網路是大型網路的一個小型網路。若電腦處於和印表機不同的子網路上，軟體安裝將會出現問題。

將「HP 報告」頁中列出的印表機 IP 位址，與電腦的 IP 位址對照。若 IP 位址中的第一組數字不一樣，則表示印表機與電腦不在同個子網路上。例如，若電腦 IP 位址以 169 開頭，而印表機 IP 位址以 10 開頭，則表示印表機與電腦不在同個子網路上。

要在 Windows 電腦上查找 IP 位址，請：

1. 按一下**開始**、**執行**，然後輸入**指令**。
2. 在指令提示時，輸入 **ipconfig**，然後按下 **Enter**。

要在 Macintosh OS X 電腦上查找 IP 位址：

1. 開啓**網路**控制台。
2. 在 **Show**（顯示）下拉式清單中，選取 **Airport**，然後按一下 **TCP/IP**。

要在 Macintosh OS 9 電腦上查找 IP 位址，從 **Apple** 功能表，選取 **TCP/IP**。

若電腦和印表機不在同個子網路上，請將印表機移到與電腦相同的子網路，然後再次執行安裝精靈。



印表機和電腦處於不同的子網路。



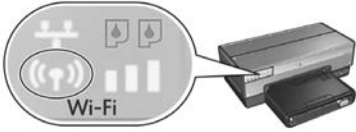
印表機和電腦處於同個子網路。

- **檢查電腦是否已連接到網路**

檢查電腦是否已連接到網路，而且電腦 LAN 或網路卡是否正確操作。

電腦在您取下網路纜線後找不到印表機

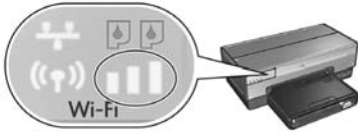
檢查印表機前方的「無線狀態」指示燈。若「無線狀態」沒有亮起，則表示印表機無線電沒有啟用。



檢查是否已從印表機取下網路纜線。若網路纜線連接到印表機乙太網埠，印表機將無法在無線連接上通訊。

檢查「網路」指示燈

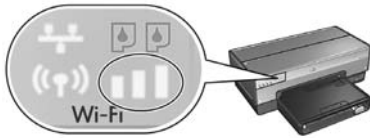
檢查印表機前方的「網路」指示燈。若「網路」指示燈沒有亮起，則表示印表機尚未連接到網路。



嘗試下列解決方法：

- **檢查「訊號強度」指示器**

檢查印表機前方的「訊號強度」指示器。若所有的三個顯示列都亮起，則表示印表機正接收強的無線電訊號。



若沒有或只有任何一個顯示列亮起，則檢查下列情況：

- 沒有大的物件阻隔印表機和 WAP 或印表機和電腦之間通道。
- 印表機是否處於 WAP 或電腦的範圍內。
- 沒有在無線網路附近操作無線電話或微波爐。

- **對照印表機無線設定與網路無線設定**

按下印表機前方的**報告頁**按鈕列印「HP 報告」頁。



將「HP 報告」頁中顯示的設定與網路的無線設定進行比較。查找不符合的設定。使用乙太網纜線將印表機連接到網路，重新執行安裝精靈，然後輸入正確的網路無線設定，為網路組態印表機。

- **依 MAC 位址過濾 WAP**

若網路 WAP 或路由器依 MAC 位址過濾網路裝置，請執行下列步驟：

1. 在「HP 報告」頁上查找印表機硬體位址（MAC 位址）。
2. 開啓 WAP 或路由器的組態公用程式。
3. 輸入印表機的 MAC 位址。

要獲得關於如何使用 WAP 或路由器的組態公用程式的說明，請參閱 WAP 或路由器隨附的說明文件。

安裝軟體後 印表機無法列印

若印表機無法列印，請檢查下列事項：

- 印表機已裝有紙張。
- 印表機沒有出現卡紙。
- 印表機前方的「列印墨水匣狀態」指示燈沒有亮起或閃爍。
- 已從您嘗試列印的應用程式選取印表機。
- 網路可正常操作，而且網路集線器、交換器、路由器，或 WAP 電源已開啓。
- 印表機電源已開啓。

要獲得更詳盡的故障排除資訊，請參閱電腦上安裝的印表機線上使用指南。

若上述的其中一個條件為「否」，請按照第 30 頁的「檢查「網路」指示燈」中的步驟檢查「網路」指示燈。

網路設定不正確或已變更

若「HP 報告」頁中顯示的任何設定與網路設定不符合，或網路無線安全性設定已變更，請執行下列步驟：

1. 將乙太網纜線連接到印表機的「Ethernet」（乙太網）埠，然後執行下列操作：
 - 對於點對點網路：將乙太網纜線連接到您的電腦。
 - 對於架構網路：將乙太網纜線連接到 WAP 或路由器。
2. 開啓印表機的內嵌式 Web 伺服器 (EWS)。若需要關於如何開啓 EWS 的說明，請參閱第 50 頁。
3. 在 EWS 上，按一下 **Networking（連線）** 標籤。
4. 在 **Connections（連接）** 標題下，按一下 **Wireless (802.11)（無線 802.11）**。
5. 在 **Wireless Setup（無線安裝）** 標籤上，按一下 **Start Wizard（啓動精靈）** 按鈕。
6. 完成無線安裝精靈後，關閉 EWS，然後拔下乙太網纜線。

若印表機仍然無法列印，請嘗試下列解決方法：

- **印表機不支援網路驗證協定**

若您在將印表機連接到網路後變更無線網路上的網路驗證協定，您可能選取了印表機不支援的協定。

印表機可以支援 WEP 驗證、WPA-AES，以及 WPA-TKIP。印表機要連接的網路必須使用這些驗證協定之一或完全不使用驗證。

- **軟體防火牆阻止存取印表機**

若您的網路使用 DHCP 或 AutoIP 來指定 IP 位址給網路裝置，在將印表機連接到網路和在電腦上安裝印表機軟體後，您電腦上安裝的軟體防火牆可能會阻止存取印表機。

註：Windows XP 隨附的軟體防火牆不會對印表機的連接造成干擾。若電腦僅執行 Windows XP 軟體防火牆，您將不需要在安裝軟體或在為印表機指定一個靜態 IP 位址期間停用防火牆。

要解決此問題，請按照第 52 頁的「為軟體防火牆組態印表機」中的步驟執行。

- **印表機和電腦不處於同個子網路**

子網路是大型網路的一個小型網路。若電腦處於和印表機不同的子網路上，電腦與印表機將無法通訊。

將「HP 報告」頁中列出的印表機 IP 位址，與電腦的 IP 位址對照。若 IP 位址中的第一組數字不一樣，則表示印表機與電腦不在同個子網路上。例如，若電腦 IP 位址以 169 開頭，而印表機 IP 位址以 10 開頭，則表示印表機與電腦不在同個子網路上。

要在 Windows 電腦上查找 IP 位址，請：

1. 按一下**開始**、**執行**，然後輸入**指令**。
2. 在指令提示時，輸入 **ipconfig**，然後按下 **Enter**。

要在 Macintosh OS X 電腦上查找 IP 位址：

1. 開啓**網路**控制台。
2. 在 **Show**（顯示）下拉式清單中，選取 **Airport**，然後按一下 **TCP/IP**。

要在 Macintosh OS 9 電腦上查找 IP 位址，從 **Apple** 功能表，選取 **TCP/IP**。

若電腦和印表機不在同個子網路上，請將印表機移到與電腦相同的子網路。

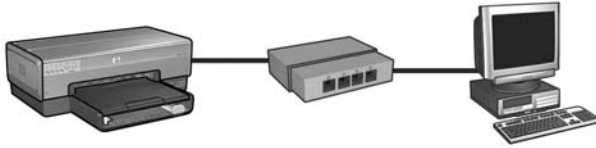


印表機和電腦處於不同的子網路。



印表機和電腦處於同個子網路。

將印表機連接到有線乙太網路



使用入門

是否已安裝印表機硬體？

在將印表機連接到網路前，請按照印表機隨附的安裝海報上的指示安裝印表機硬體。

網路上的電腦是否有軟體防火牆保護？

若網路上的任何一台電腦有軟體防火牆保護，在將印表機連接到網路前，請按照第 52 頁的「為軟體防火牆組態印表機」中的步驟執行。

連接印表機

步驟 1：將印表機連接到網路

使用乙太網纜線將印表機連接到網路集線器、交換器，或路由器。

要獲得關於將印表機連接到網路的指示，請參閱第 37 頁的「步驟 1：將印表機連接到網路」。

步驟 2：在有線乙太網連接上安裝印表機軟體

在電腦上安裝印表機軟體的步驟將根據作業系統而有所不同：Windows、Mac OS9，以及 Mac OSX。

要獲得安裝指示，請參閱第 39 頁的「步驟 2：在有線乙太網連接上安裝印表機軟體」。

步驟 1：將印表機連接到網路



要將印表機連接到乙太網路，請：

1. 檢查印表機電源是否已開啓。
2. 將乙太網纜線連接到網路集線器、交換器，或路由器。



註：不要將乙太網纜線插入標有 **Internet**、**WAN**，或 **Uplink** 的埠。

3. 將乙太網纜線連接到印表機後方的「Ethernet」（乙太網）埠。
4. 執行下列操作之一：

「連結」指示燈的狀態	操作
亮起 	移到步驟 5。
熄滅 	重複執行步驟 2 到 4。 若「連結」指示燈仍然熄滅，則檢查下列項目： <ul style="list-style-type: none">• 印表機電源已開啓。• 網路集線器、交換器，或路由器電源已開啓。• 所有纜線牢固連接。• 您使用的是乙太網纜線。

下頁繼續 ...

5. 按下印表機**報告頁**按鈕列印「HP 報告」頁。



6. 在每一台要使用該印表機的電腦上安裝印表機軟體（請參閱第 39 頁的「步驟 2：在有線乙太網連接上安裝印表機軟體」）。

註：建議印表機和使用該印表機的電腦都處於同個子網路。

步驟 2：在有線乙太網連接上安裝印表機軟體

軟體防火牆？若您的電腦有軟體防火牆保護，請在安裝印表機軟體前，先按照第 52 頁的「為軟體防火牆組態印表機」中的步驟執行。

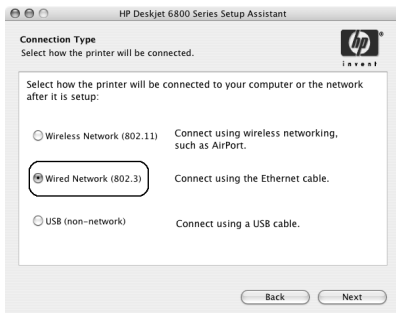
Windows

1. 將印表機軟體 CD 放入電腦的 CD-ROM 磁碟機，然後按照畫面上的指示執行。
2. 在**連接類型**畫面上，選取**有線網路**，然後按一下下一步。
3. 按照畫面上的指示完成軟體安裝。

Macintosh

Mac OS X

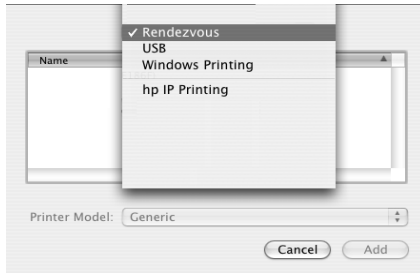
1. 將印表機軟體 CD 放入電腦的 CD-ROM 磁碟機，然後連按 CD 桌面圖像。
2. 連接 **HP Deskjet 6800 installer**（**HP Deskjet 6800 安裝器**）圖像，然後按照畫面上的指示執行。
3. 在 **Connection Type**（**連接類型**）畫面上，選取 **Wired Network (802.3)**（**有線網路 802.3**），然後按一下 **Next**（**下一步**）。



下頁繼續 ...

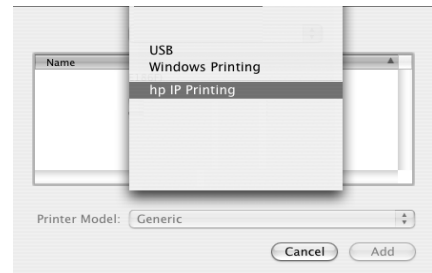
4. 按照畫面上的指示完成軟體安裝。
5. 在 **Add Printer**（加入印表機）畫面上，按一下 **Open Print Center**（開啓 **Print Center**）。
6. 按一下 **Add Printer**（加入印表機）。
7. 根據您使用的 Mac OS X 版本，執行下列操作之一：

Mac OS x v 10.2.3



選取 **Rendezvous**。

Mac OS x v 10.2.2 和更低版本



選取 **HP IP Printing**（**HP IP** 列印），然後按一下 **Discover** 按鈕。

8. 選取印表機，然後按一下 **Add**（加入）按鈕。
9. 關閉 **Print Center**。

Mac OS 9

1. 將印表機軟體 CD 放入電腦的 CD-ROM 磁碟機，然後連按 CD 桌面圖像。
2. 連按 **HP Deskjet 6800 installer** (**HP Deskjet 6800 安裝器**) 圖像，然後在電腦提示時重新啓動電腦。
3. 開啓 **Chooser** (**選配器**)，然後選取 **HP Inkjet 6.x** 圖像。
4. 當系統詢問您是否要電腦查找 TCP/IP 網路印表機時，請按一下 **Yes** (**是**)。
5. 選取印表機，然後關閉 **Chooser** (**選配器**)。

有線乙太網連接的故障排除

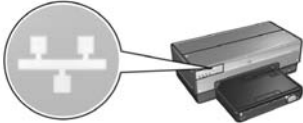
安裝期間

電腦找不到印表機

若您無法在電腦上安裝印表機軟體或找不到印表機，請在調查本節中的任何主題前，先檢查下列事項：

- 電腦和印表機的所有纜線連接都牢固。
- 網路可正常操作，而且網路集線器、交換器，或路由器電源已開啓。
- 印表機電源已開啓。
- 所有應用程式，包括病毒保護程式和個人防火牆都已關閉或停用。

檢查印表機前方的「網路」指示燈。若「網路」指示燈沒有亮起，則表示印表機尚未連接到網路。



檢查纜線連接是否牢固。若纜線連接牢固，按下印表機前方的**報告頁**按鈕，列印「HP 報告」頁。



然後嘗試下列解決方法之一，將印表機連接到網路。

- **印表機和電腦處於不同的子網路**

子網路是大型網路的一個小型網路。若電腦處於和印表機不同的子網路上，軟體安裝將會出現問題。

將「HP 報告」頁中列出的印表機 IP 位址，與電腦的 IP 位址對照。若 IP 位址中的第一組數字不一樣，則表示印表機與電腦不在同個子網路上。例如，若電腦 IP 位址以 169 開頭，而印表機 IP 位址以 10 開頭，則表示印表機與電腦不在同個子網路上。

要在 Windows 電腦上查找 IP 位址，請：

1. 按一下**開始**、**執行**，然後輸入**指令**。
2. 在指令提示時，輸入 **ipconfig**，然後按下 **Enter**。

要在 Macintosh OS X 電腦上查找 IP 位址：

1. 開啓**網路**控制台。
2. 在顯示下拉式清單中，選取 **Airport**，然後按一下 **TCP/IP**。

要在 Macintosh OS 9 電腦上查找 IP 位址，從 **Apple** 功能表，選取 **TCP/IP**。

若印表機和電腦不在同個子網路上，請將印表機移到與電腦相同的子網路，然後再次執行安裝精靈。



印表機和電腦處於不同的子網路。



印表機和電腦處於同個子網路。

- **停用電腦上執行的任何防火牆**

在安裝印表機軟體的過程中，軟體防火牆會阻止電腦查找網路上的印表機。若電腦無法找到印表機，印表機軟體將無法安裝到電腦上。

若電腦具有安裝 Windows XP 時隨附的防火牆以外的軟體防火牆（例如：BlackICE[®]、ZoneAlarm[®] 或 Brickhouse[®]），請參閱防火牆隨附的說明文件以獲得有關停用該防火牆的說明。

註：Windows XP 隨附的軟體防火牆不會對印表機的連接造成干擾。若電腦僅執行 Windows XP 軟體防火牆，您將不需要在安裝軟體或在為印表機指定一個靜態 IP 位址期間停用防火牆。

在電腦上安裝印表機軟體前，請在電腦上暫時停用軟體防火牆，然後為印表機指定一個靜態 IP 位址。在電腦上安裝印表機軟體後，重新啟動防火牆。

要獲得關於將印表機連接到有軟體防火牆保護的電腦的指示，請參閱第 52 頁的「為軟體防火牆組態印表機」。

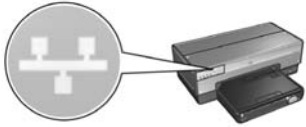
安裝後 印表機無法列印

若印表機無法列印，請檢查下列事項：

- 印表機已裝有紙張。
- 印表機沒有出現卡紙。
- 印表機前方的「列印墨水匣狀態」指示燈沒有亮起或閃爍。
- 已從您嘗試列印的應用程式選取印表機。
- 網路可正常操作，而且網路集線器、交換器，或路由器電源已開啓。
- 印表機電源已開啓。
- 電腦和印表機的所有纜線連接都牢固。

要獲得更詳盡的故障排除資訊，請參閱電腦上安裝的印表機線上使用指南。

檢查印表機前方的「網路」指示燈。若「網路」指示燈沒有亮起，則表示印表機尚未連接到網路。



檢查纜線連接是否牢固。若纜線連接牢固，按下印表機前方的**報告頁**按鈕，列印「HP 報告」頁。



然後嘗試下列解決方法之一，將印表機連接到網路。

- **印表機和電腦處於不同的子網路**

子網路是大型網路的一個小型網路。若電腦處於和印表機不同的子網路上，電腦與印表機將無法通訊。

將「HP 報告」頁中列出的印表機 IP 位址，與電腦的 IP 位址對照。若 IP 位址中的第一組數字不一樣，則表示印表機與電腦不在同個子網路上。例如，若電腦 IP 位址以 169 開頭，而印表機 IP 位址以 10 開頭，則表示印表機與電腦不在同個子網路上。

要在 Windows 電腦上查找 IP 位址，請：

1. 按一下**開始**、**執行**，然後輸入**指令**。
2. 在指令提示時，輸入 **ipconfig**，然後按下 **Enter**。

要在 Macintosh OS X 電腦上查找 IP 位址：

1. 開啓**網路**控制台。
2. 在**顯示**下拉式清單中，選取 **Airport**，然後按一下 **TCP/IP**。

要在 Macintosh OS 9 電腦上查找 IP 位址，從 **Apple** 功能表，選取 **TCP/IP**。
若印表機和電腦不在同個子網路上，請將印表機移到與電腦相同的子網路。



印表機和電腦處於不同的子網路。



印表機和電腦處於同個子網路。

- **軟體防火牆阻止存取印表機**

若您的網路使用 DHCP 或 AutoIP 來指定 IP 位址給網路裝置，在將印表機連接到網路和在電腦上安裝印表機軟體後，您電腦上安裝的軟體防火牆可能會阻止存取印表機。

註：Windows XP 隨附的軟體防火牆不會對印表機的連接造成干擾。若電腦僅執行 Windows XP 軟體防火牆，您將不需要在安裝軟體或在為印表機指定一個靜態 IP 位址期間停用防火牆。

要解決此問題，請按照第 52 頁的「為軟體防火牆組態印表機」中的步驟執行。

網路設定已變更

要對照「HP 報告」頁中列出的印表機網路設定與網路的實際設定，來檢查印表機網路設定：

1. 開啓網路集線器、交換器，或路由器的組態公用程式，以查找網路設定。
要獲得關於如何使用網路集線器、交換器，或路由器的組態公用程式的說明，請參閱集線器、交換器，或路由器隨附的說明文件。
2. 開啓印表機內嵌式 Web 伺服器 (EWS)。若需要關於如何開啓 EWS 的說明，請參閱第 50 頁。
3. 在 EWS 上，按一下 **Networking (連線)** 標籤。
4. 在 **Connections (連接)** 標題下，按一下 **Wired (802.3) (有線 802.3)**。
5. 按一下 **IP Configuration (IP 組態)** 標籤。
6. 輸入網路的正確設定值，然後按一下 **Apply (套用)** 按鈕。
7. 關閉 EWS。
8. 按下印表機**報告頁**按鈕列印「HP 報告」頁。



9. 將印表機網路設定與實際的網路設定對照。若設定不符合，請重複執行步驟 2 至 9。

在網路上管理印表機

印表機提供數種工具幫助您在網路上管理印表機。

「HP 報告」頁	49
內嵌式 Web 伺服器 (EWS)	50
變更無線安全性設定	51
為軟體防火牆組態印表機	52
將印表機重設為出廠設定值	57

「HP 報告」頁

按下**報告頁**按鈕列印「HP 報告」頁。



「HP 報告」頁提供關於印表機的無線、有線和 PictBridge 連線之有幫助資訊，例如下列項目：

- URL：印表機內嵌式 Web 伺服器的位址。
- 硬體位址 (MAC)：印表機媒體存取控制 (MAC) 位址。
- IP 位址：印表機的 IP 位址。
- 子網路遮罩：印表機所連接的網路的子網路遮罩。
- 預設閘道：閘道的 IP 位址。
- 通訊模式：印表機所設定的無線通訊模式。
- 網路名稱 (SSID)：印表機所連接的無線網路的網路名稱。
- 通道：印表機無線電所廣播的通道數目。
- 驗證類型：印表機所使用的驗證協定。
- 加密：印表機所使用的無線加密策略。

內嵌式 Web 伺服器 (EWS)

印表機具有一個內部 Web 頁，稱為「內嵌式 Web 伺服器」(EWS)。您可以使用網際網路瀏覽器存取 EWS。

要使用 EWS，印表機必須具有一個有效的 IP 位址，並且處於和您正在使用的電腦相同的子網路上。

要開啓 EWS，請：

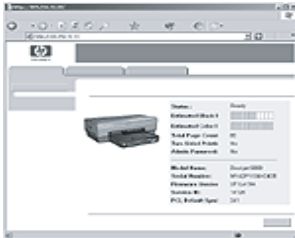
1. 按下印表機**報告**頁按鈕列印「HP 報告」頁。



2. 在「HP 報告」頁上查找印表機的 URL。

註：檢查是否印表機 URL 不是 **http://0.0.0.0**，以及子網路遮罩是否與印表機的符合。若其中一個條件為「否」，請將乙太網纜線連接到印表機和網路路由器，然後重複執行步驟 1 和 2。

3. 啓動 Web 瀏覽器（使用 Internet Explorer 5 和更高版本、Netscape 4.75 和更高版本，或者 Safari）。
4. 在瀏覽器位址方塊中輸入印表機 URL，然後按下 **Enter**。



變更無線安全性設定

若您變更無線網路的無線安全性設定，您必須使用這些新的設定值來重新組態印表機。

使用入門

重新組態印表機前，您必須查找下列設定：

- 網路名稱 (SSID)
- 新的無線安全性設定：
 - WEP：查找 WEP 金鑰
 - WPA：查找密碼和驗證協定

參閱「Wireless Access Point」（無線存取點，WAP）的組態公用程式，以查找無線安全性設定。

組態印表機

要使用新的無線安全性設定值來重新組態印表機，請：

1. 使用乙太網纜線將印表機連接到網路上的乙太網埠，例如：WAP、路由器、集線器或牆上插座上的可用乙太網埠。
2. 開啓印表機的內嵌式 Web 伺服器 (EWS)。若需要關於如何開啓 EWS 的說明，請參閱第 50 頁。
3. 在 EWS 上，按一下 **Networking（連線）** 標籤。
4. 在 **Connections（連接）** 標題下，按一下 **Wireless (802.11)（無線 802.11）**。
5. 在 **Wireless Setup（無線安裝）** 標籤上，按一下 **Start Wizard（啓動精靈）** 按鈕。
6. 按照畫面上的指示輸入新的設定值並完成組態。

為軟體防火牆組態印表機

軟體防火牆可以在電腦連接到網際網路時保護電腦免受未經授權的存取。

流行的軟體防火牆包括：BlackICE[®]、ZoneAlarm[®] 以及 Brickhouse[®]。

註：Windows XP 會隨附一個軟體防火牆。若您的電腦僅使用 Windows XP 防火牆，您將不需要按照本節中的指示執行。

問題

很遺憾的，當您在有線或無線網路上使用印表機時，軟體防火牆可以導致兩個問題。

- **安裝失敗：**在安裝印表機軟體的過程中，軟體防火牆會阻止電腦查找網路上的印表機。若電腦無法找到印表機，印表機軟體將無法安裝到電腦上。
- **失去連接：**若印表機是連接到使用 DHCP 或 AutoIP 來指定 IP 位址的有線或無線網路，然後若印表機 IP 位址有變更，軟體防火牆就會阻止電腦查找網路上的印表機，即使印表機軟體已成功安裝到電腦上。

解決方法

為了使印表機可以在有軟體防火牆保護的電腦的網路上使用，您必須執行下列操作：

1. 在電腦上安裝印表機軟體前，暫時停用軟體防火牆。
2. 為印表機指定一個靜態 IP 位址。

安裝前暫時停用軟體防火牆

為印表機指定一個靜態 IP 位址和在電腦上安裝印表機軟體前，在電腦上暫時停用軟體防火牆。要獲得關於停用軟體防火牆的指示，請參閱軟體防火牆隨附的說明文件。

在停用軟體防火牆後，HP 極力建議在電腦上安裝下列項目：

- 一個硬體裝置，例如：閘道，它可以在電腦與網際網路之間提供防火牆保護。
- 一個最新的防毒軟體程式

要在停用軟體防火牆時獲得最大的防毒保護，請在電腦上安裝印表機軟體時，中斷電腦或路由器與網際網路的連接。安裝印表機軟體後，您即可將電腦或路由器重新連接到網際網路。

停用軟體防火牆後，按照為印表機指定一個靜態 IP 位址的步驟執行。

為印表機指定一個靜態 IP 位址

準備就緒

為印表機指定一個靜態 IP 位址前，您必須查找關於您網路的下列資訊：

- DHCP 網域伺服器的 IP 位址範圍
- 子網路遮罩
- 閘道

要查找此資訊，請參閱網路路由器或交換器的組態公用程式。否則，您也可以查閱網路路由器或交換器隨附的說明文件。

靜態 IP 位址必須在您的網路於網路上指定給裝置的 IP 位址的範圍外。

例如，若有一個網路必須使用 DHCP 指定範圍從 1.1.1.1 到 1.1.1.100 的 IP 位址。在此情形下，1.1.1.25 將不會是一個好的靜態 IP 位址用於指定給印表機，因為它處於網路所指定的 IP 位址範圍內。然而，1.1.1.101 將是一個好的靜態 IP 位址，因為它處於網路所指定的 IP 位址範圍外。

指定靜態 IP 位址

要為印表機指定一個靜態 IP 位址：

1. 使用乙太網纜線將印表機連接到網路上的乙太網埠，例如：WAP、路由器、集線器或牆上插座上的可用乙太網埠。
2. 當印表機前方的「網路」指示燈固定亮起時，按下**報告頁**按鈕列印「HP 報告」頁。



3. 在「HP 報告」頁上查找印表機的 URL。
4. 啓動電腦網際網路瀏覽器，然後在位址方塊中輸入「HP 報告」頁上列出的印表機 URL，以開啓印表機內嵌式 Web 伺服器 (EWS)。
5. 在 EWS 上，按一下 **Networking (連線)** 標籤。
6. 在 **Connections (連接)** 標題下，按一下下列選項之一：
 - 若您要將印表機連接到有線乙太網路，請按一下 **Wired (802.3) (有線 802.3)**。
 - 若您要將印表機連接到無線網路，則請按一下 **Wireless (802.11) (無線 802.11)**，然後按一下 **IP Configuration (IP 組態)** 標籤。
7. 在 **IP Address Configuration (組態 IP 位址)** 標題下，選取 **Manual IP (手動組態 IP)**，然後輸入您要指定給印表機的靜態 IP 位址、子網路遮罩，以及預設閘道。

註：請切記，靜態 IP 位址必須在網路所指定的 IP 位址範圍外。此外，若您沒有可輸入的子網路遮罩或預設閘道，則在各項目中輸入 0.0.0.0。

下頁繼續 ...

8. 在 **DNS Address Configuration**（組態 DNS 位址）標題下，輸入偏好與備用 DNS 伺服器。

註：若您沒有可輸入的偏好與備用 DNS 伺服器，則在各項目中輸入 0.0.0.0。

9. 輸入所有資訊後，按一下 **Apply**（套用）按鈕，然後關閉 EWS。

10. 開啓軟體防火牆的組態公用程式，然後在可接受的 IP 位址列表中，輸入您要指定給印表機的 IP 位址。

要獲得關於軟體防火牆組態公用程式的說明，請參閱軟體防火牆隨附的說明文件。

爲印表機指定一個靜態 IP 位址後，請選取下列適合您將印表機連接到網路的方式，然後按照其印表機軟體安裝指示執行：

- 無線連接：請到第 9 頁。
- 有線乙太網連接：請到第 37 頁。

註：安裝印表機軟體後，在電腦上重新啓動軟體防火牆。

將印表機重設為出廠設定值

將印表機重設為出廠設定值將會刪除印表機記憶體中您所有的網路設定。此操作應該只在對印表機進行故障排除時最後考慮執行的方法。

將印表機重設為出廠設定值可能需要您重新安裝印表機軟體。此外，您也將需要重新組態印表機安全性設定。

印表機預設設定是：

選項	預設設定
通訊模式	點對點
網路名稱 (SSID)	hp 設定
加密	無
IP 位址	自動
無線電	開啓
EWS 管理員密碼	[空]

要將印表機重設為出廠設定值，請：

1. 檢查印表機電源是否已開啓。
2. 按住**報告頁**按鈕。
3. 在按住**報告頁**按鈕時，按下**取消**按鈕三次。
4. 放開**報告頁**按鈕。

詞彙表

802.11g 和 b：802.11g 和 802.11b 是在 2.4 十億赫茲 (GHz) 頻帶中通訊的無線標準。802.11g 可提供高達 54 Mbps 的速度。802.11b 則可提供高達 11 Mbps 的速度。

IP 位址 (網際網路協定位址)：識別網路上的裝置的獨特號碼。IP 位址通常由 DHCP 或 AutoIP 自動指定。但是，您可以為裝置手動指定一個靜態 IP 位址。

USB 快閃磁碟機：USB 快閃磁碟機是一個插入 USB 埠的攜帶型儲存裝置。USB 快閃磁碟機有時也稱為「thumbdrives」或「jumpdrives」。

WEP：有線等同保密 (WEP) 透過加密在無線電波上從一台無線裝置傳送到另一台無線裝置的資料提供安全性。WEP 可以將網路上傳送的資料進行編碼從而使資料不易被竊取。只有具有與印表機相同 WEP 設定的裝置才可以和印表機通訊。WEP 依賴靜態的加密金鑰，並且提供的安全性比 WPA 少。

WEP 金鑰：WEP 金鑰，或加密金鑰，是一個包括文字與數字的字元或十六進位數字的順序。建立 WEP 金鑰後，您必須牢牢記得它或將它儲存到一個安全的地點。若您丟失了 WEP 金鑰，您可能無法檢索取回。WEP 金鑰可以長達 64 或 128 位元。金鑰的前面 24 位元將自動提供。建立 WEP 金鑰時，建立金鑰者將提供剩餘的位 (若是 64 位元金鑰則是 40 位元，或者若是 128 位元金鑰則是 104 位元)。

WPA：Wi-Fi 保護存取 (WPA) 透過加密在無線電波上從一台無線裝置傳送到另一台無線裝置的資料，以及透過使用驗證協定控制網路資源的存取，來提供安全性。只有具有與印表機相同 WPA 設定的裝置才可以和印表機通訊。WPA 使用經常變更的加密金鑰。WPA 可以比 WEP 提供更好的安全性。

乙太網：用於區域網路的流行有線電腦連線形式。

乙太網纜線：乙太網纜線有兩種。筆直纜線是最普遍的，並且用於將網路上的裝置連接到集線器或路由器。交叉纜線用於連接兩台具備乙太網埠的裝置，但不是集線器或路由器。

子網路：作為大型網路的一部分的小型網路。建議印表機和使用該印表機的電腦都處於同個子網路。

子網路遮罩：識別屬於子網路的 IP 位址的號碼。

內嵌式 Web 伺服器 (EWS)：印表機內嵌式 Web 伺服器是透過網際網路瀏覽器存取的連線組態公用程式。要獲得更多資訊，請參閱第 50 頁的「內嵌式 Web 伺服器 (EWS)」。

加密：一種網路安全性策略，將無線網路上傳送的資料進行編碼從而使資料不易被竊取。印表機支援 WEP 和 WPA。

加密金鑰：無線裝置用於為資料編碼的字元或數字順序。加密金鑰可以是靜態的（例如在 WEP 中）或是動態的（例如在 WPA 中）。

交換器：管理網路通訊以將衝突減到最低和達到最快速度的網路裝置。

防火牆：硬體和軟體工具的組合，用於保護網路免受不必要的侵入。

架構網路：無線網路的一種，網路上的裝置需要透過無線存取點 (WAP) 互相通訊，如：無線網路集線器、路由器或閘道。

通道：在啟用 802.11 的裝置上通訊時的幾種預先設定頻率之一，用於減少干擾。可用的通道數目將因不同的國家 / 地區而有所不同。

閘道：連接兩個不同網路的專用裝置（路由器或電腦）。例如，可以將乙太網路上的電腦作為網路和網際網路之間的閘道。

集線器：作為乙太網路中心的簡單裝置。網路上的其他裝置將連接到集線器。

無線存取點 (WAP)：無線存取點 (WAP) 是可以讓架構無線網路上的裝置（例如，電腦和印表機）互相通訊的裝置。WAP 也稱為「基地站」。

無線網路金鑰：在執行 Windows XP service pack 2 的電腦上，您可以使用 USB 快閃磁碟機建立「無線網路金鑰」。「無線網路金鑰」可以讓您簡易地為無線網路組態無線裝置。要獲得更多資訊，請參閱第 10 頁的「具備無線網路金鑰的架構網路」。

無線設定檔：無線設定檔是適用於特定無線網路的無線網路設定的收集。例如，無線 LAN 卡可以具有家庭網路的一個設定檔，以及辦公室網路的另一個設定檔。在網路上安裝裝置時，請確定選取適當的設定檔。

網路卡：網路卡可以讓電腦在有線或無線網路上通訊。

網路名稱：網路名稱是包括文字與數字、區分大小寫的字串，為無線網路提供基本的存取控制。網路名稱也稱為「服務設定識別 (SSID)」。

點對點網路：無線網路的一種，網路上的裝置可以直接互相通訊而無須透過無線存取點 (WAP)。點對點網路通常是小型而簡單的（例如，兩台無線 PC 或一台無線 PC 和一台無線印表機）。若網路上具有超過六個裝置，此類網路的效能將會減退。點對點網路也稱為「電腦對電腦網路」、「對等網路」、「獨立的基本服務站 (IBSS)」，或「直接連接無線網路」。

驗證：驗證是一種無線網路安全性策略。在具備驗證的網路上，裝置使用共用金鑰作為密碼，並且僅與知道該金鑰的裝置通訊。與 WEP 不同，驗證不會將無線裝置之間傳送的資料加密。然而，驗證可以和 WEP 聯合使用。驗證金鑰和 WEP 金鑰可以是一樣的。



Printed on minimum 50% recycled fiber and
30% postconsumer waste.
© Copyright 2004
Copyright 2004 Hewlett-Packard Development
Company, L.P.



* C 9 0 2 9 - 9 0 0 6 9 *

C9029-90069
Printed in [country] 07/2004
Printed in [country] 07/2004