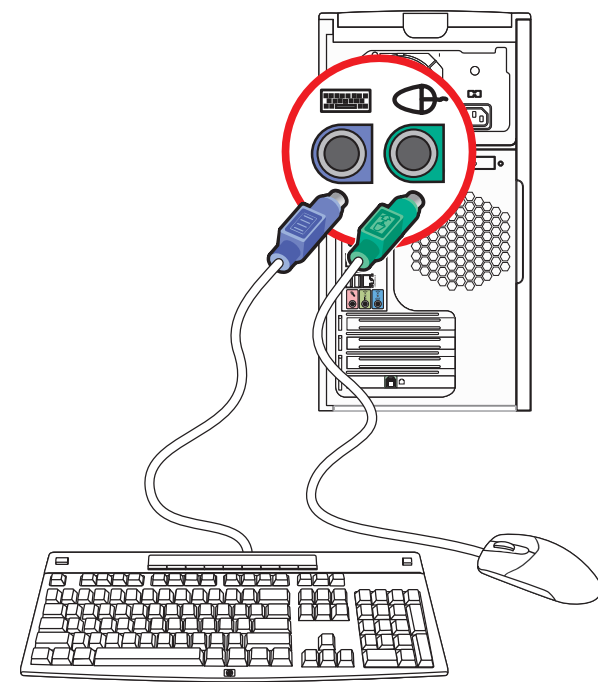


© 2004 Hewlett-Packard Development Company, L.P.  
Printed in  
www.hp.com

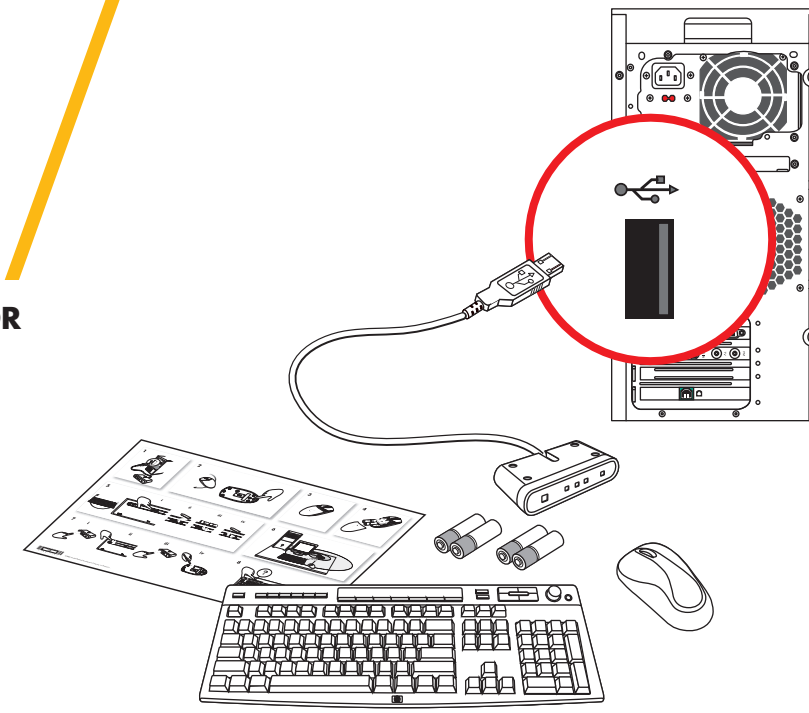
### 1 Keyboard and Mouse



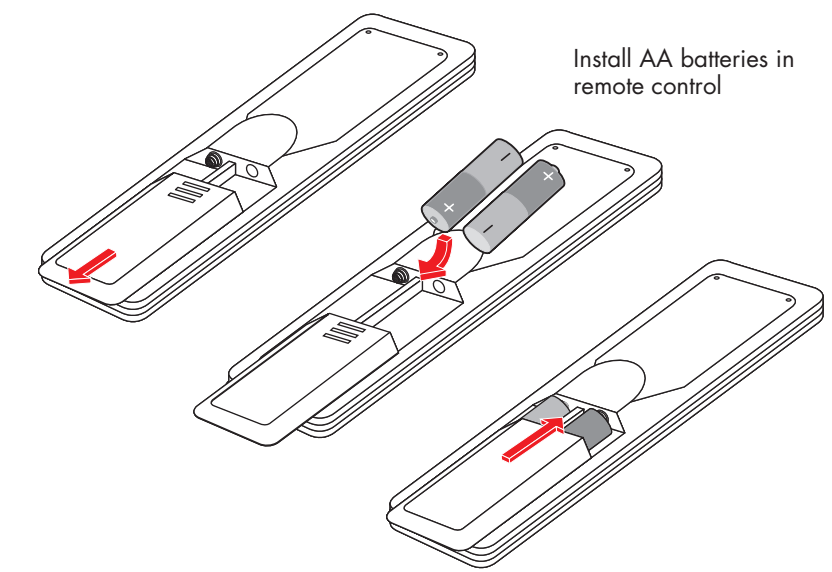
### Wireless option

Refer to setup instructions located in your mouse/receiver box.

OR

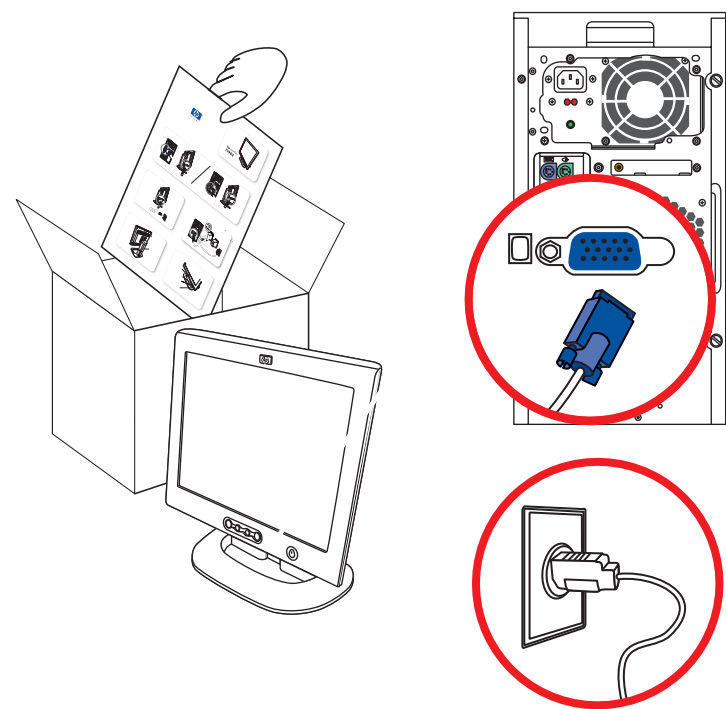


### 2 Remote Control



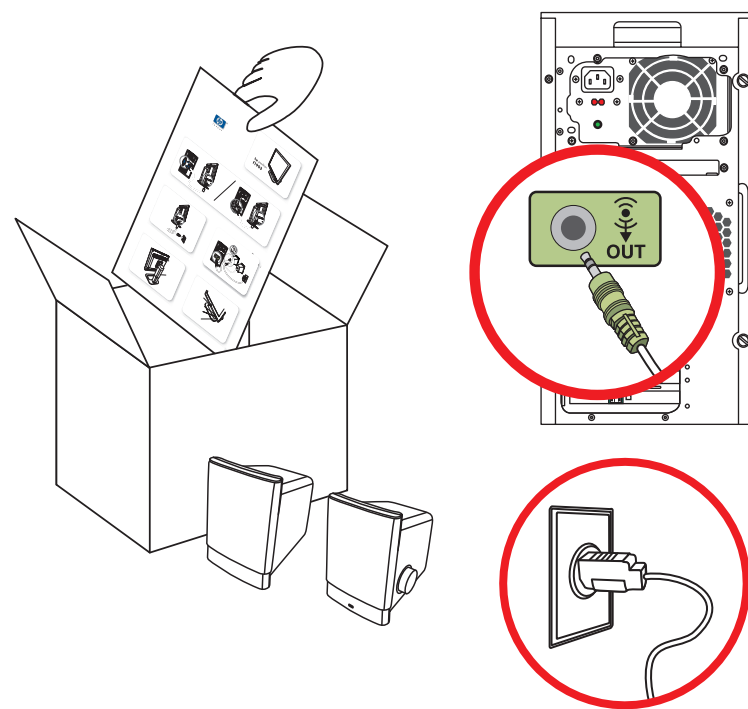
### 3 Monitor

Refer to setup instructions that came with your monitor.



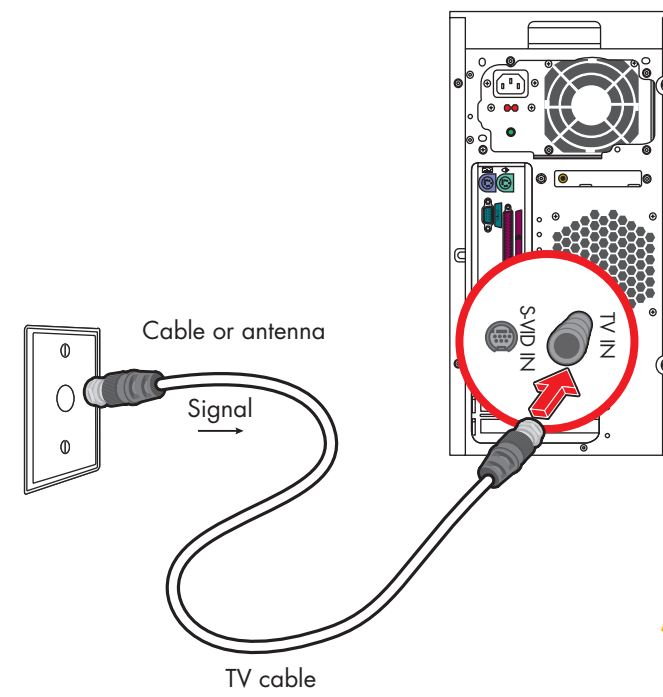
### 4 Speaker System

Refer to setup instructions that came with your speakers.



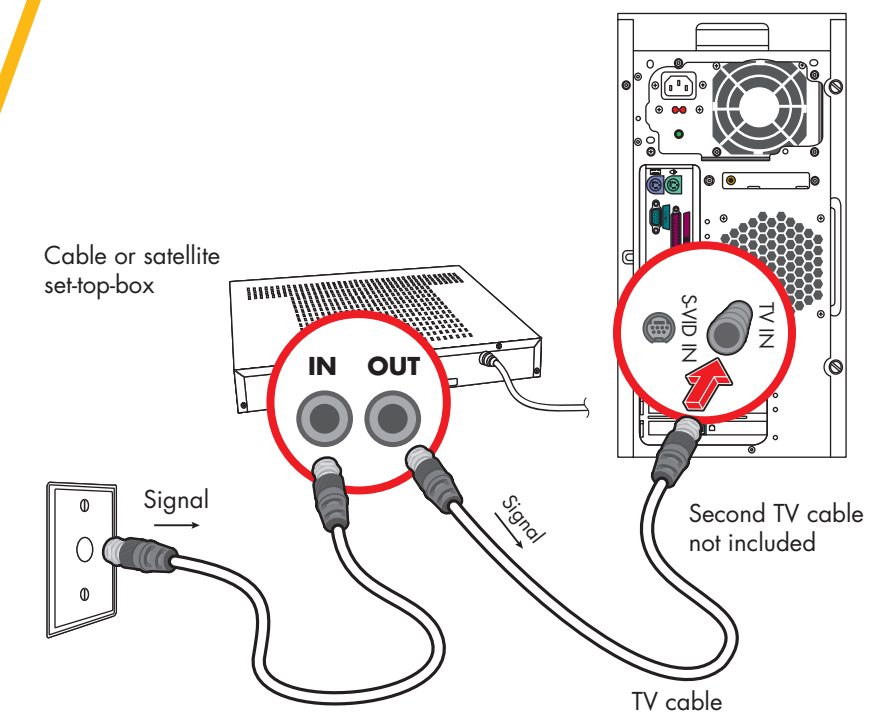
### 5 TV In

Connect TV signal to computer



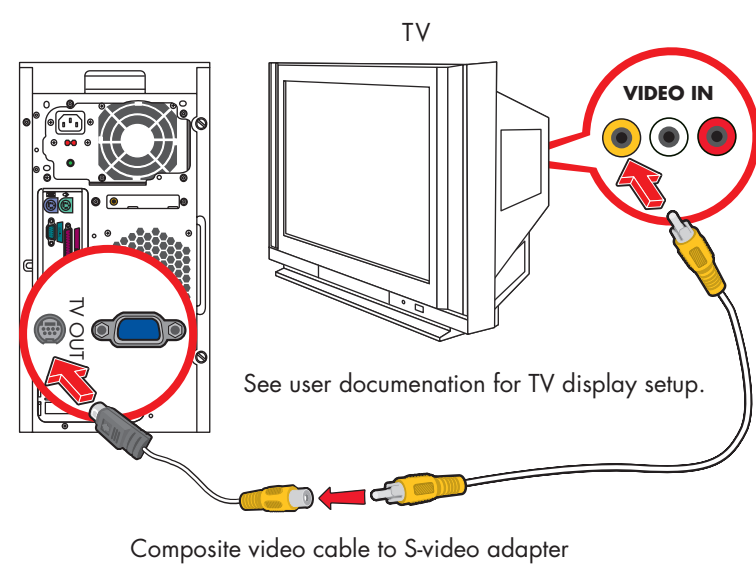
OR

If you use a cable or satellite set-top box, pass the signal through the box.



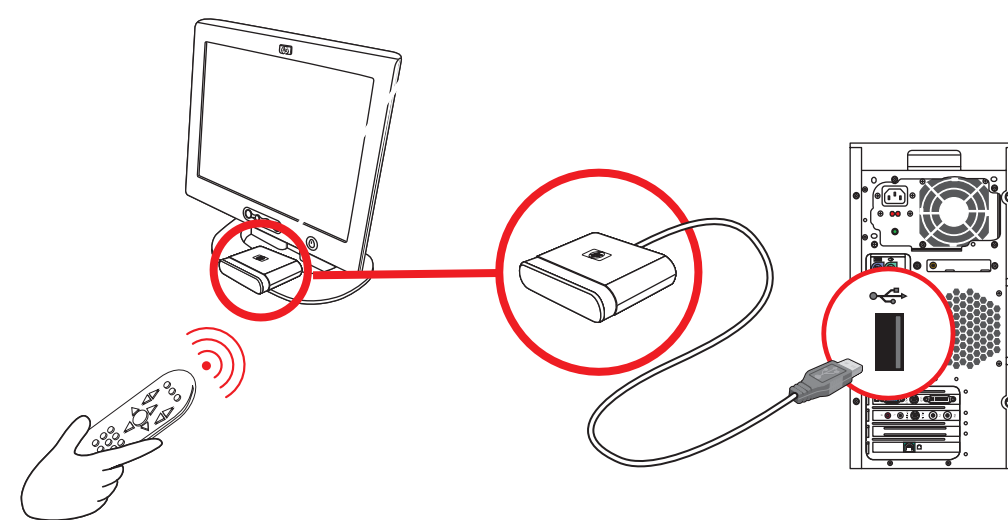
### 6 TV Out (TV connections are optional)

TV signal from computer to TV



### 7 Remote Sensor

Connect remote control receiver to computer.



OR

If you use a cable or satellite set-top box, pass the signal through the remote sensor control cable.

