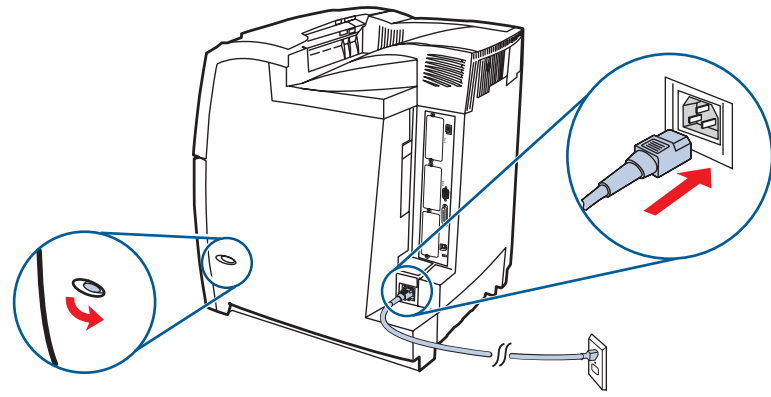
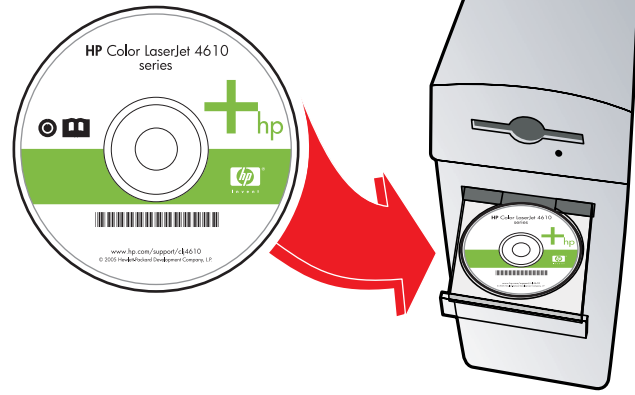


6

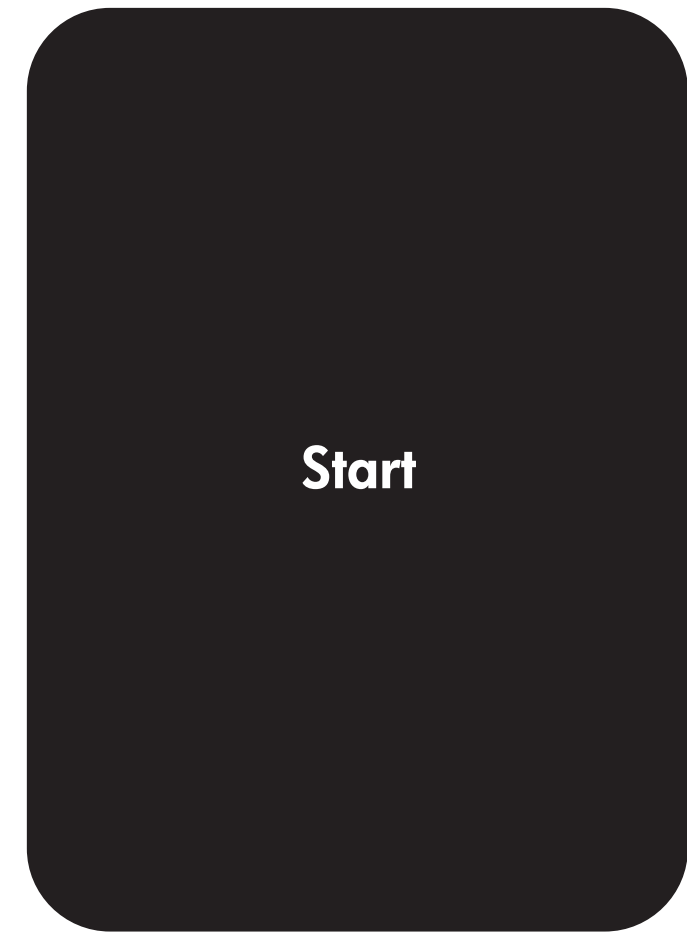


7 Install software & drivers

The Color LaserJet 4610 series installation CD contains network setup software for the HP Jetdirect 175x. Do not use the separate HP Jetdirect 175x installation CD.



HP Color LaserJet 4610n



Start



**English**  
**Additional Information**  
 See the electronic User Guide on the CD-ROM that came with the printer for more information about the following topics.  
 - Detailed user instructions  
 - Troubleshooting information  
 - Important safety notice  
 - Regulatory information  
 This information is also available at [www.hp.com/support/clj4610n](http://www.hp.com/support/clj4610n)



[www.hp.com/support/clj4610n](http://www.hp.com/support/clj4610n)



© 2005 Hewlett-Packard Development Company, L.P.

[www.hp.com](http://www.hp.com)



Q7732-90901

Copyright Information

© 2005 Hewlett-Packard Development Company, L.P.  
 Reproduction, adaptation or translation without prior written permission is prohibited, except as allowed under the copyright laws. The information contained herein is subject to change without notice. The only warranties for HP products and services are set forth in the express warrant statements accompanying such products and services. Nothing herein should be construed as constituting an additional warranty. HP shall not be liable for technical or editorial errors or omissions contained herein.  
 Part number : Q7732-90901  
 Edition 1, 2/2005

FCC Regulations

This equipment has been tested and found to comply with the limits for a class B digital device, pursuant to Part 15 of the FCC rules. These limits are designed to provide reasonable protection against harmful interference in a residential installation. This equipment generates, uses, and can radiate radio frequency energy. If this equipment is not installed and used in accordance with the instructions, it may cause harmful interference to radio communications. However, there is no guarantee that interference will not occur in a particular installation. If this equipment does cause harmful interference to radio or television reception, which can be determined by turning the equipment off and on, the user is encouraged to try to correct the interference by one or more of the following measures:

Reorient or relocate the receiving antenna.

Increase separation between equipment and receiver.

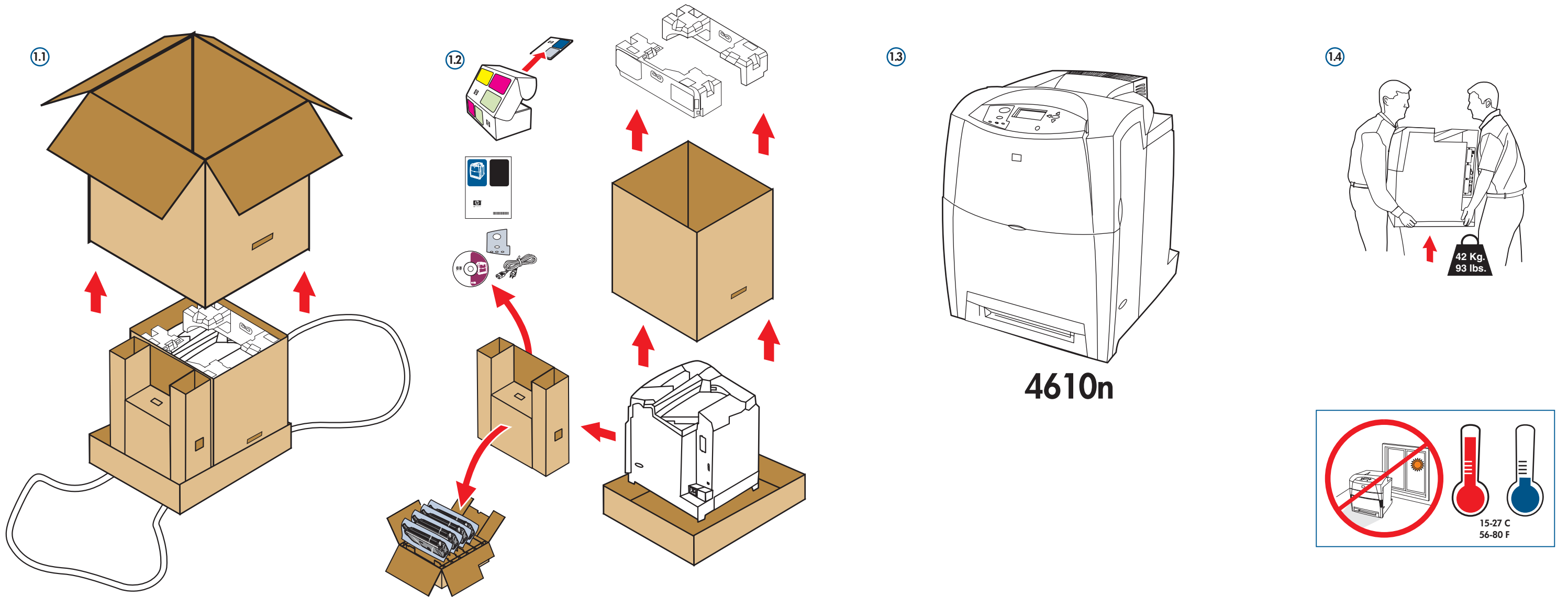
Connect equipment to an outlet on a circuit different from that to which the receiver is located.

Consult your dealer or an experienced radio/TV technician.

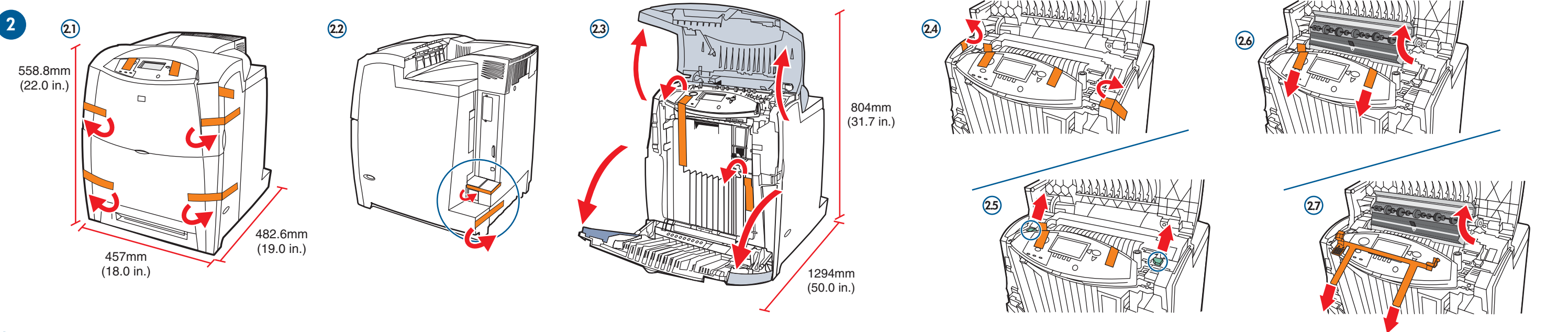
Any changes or modifications to the printer that are not expressly approved by HP could void the user's authority to operate this equipment.

Use of a shielded interface cable is required to comply with the Class B limits of Part 15 of FCC rules.

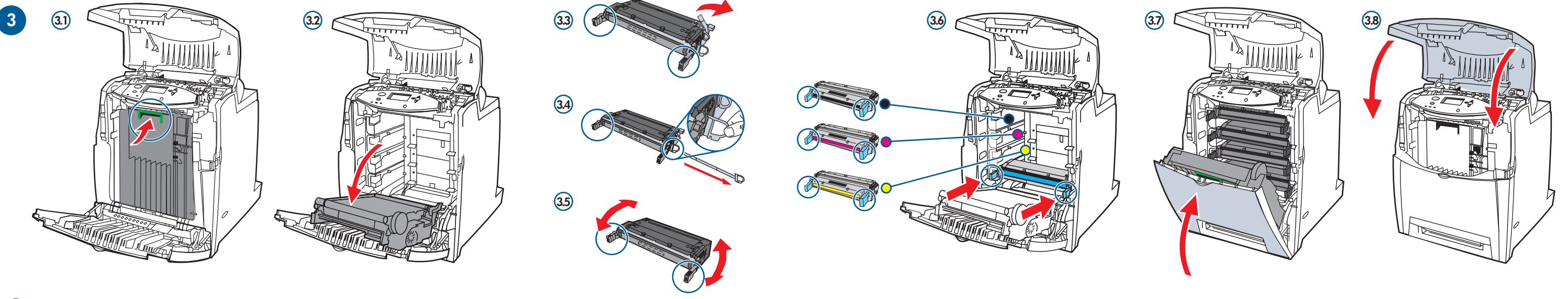
1



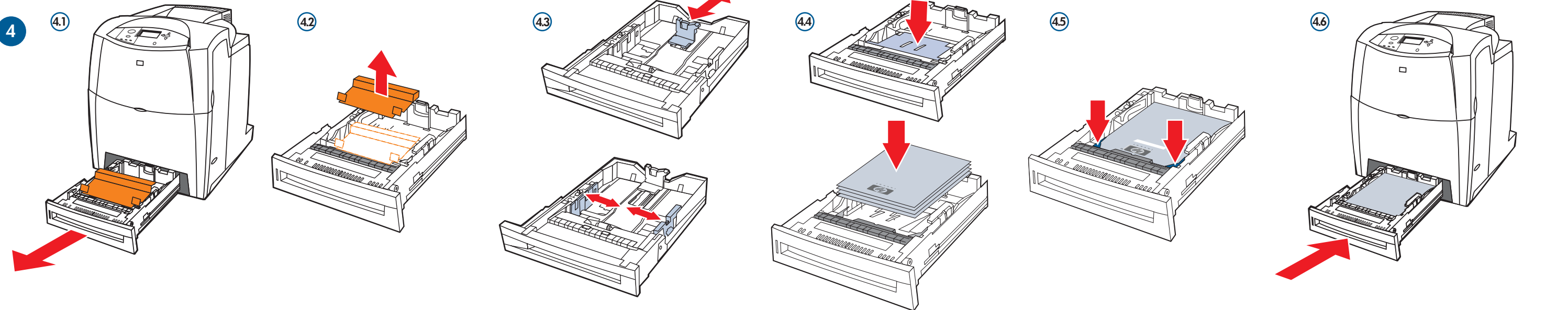
2



3



4



5

