

# Start Here

1

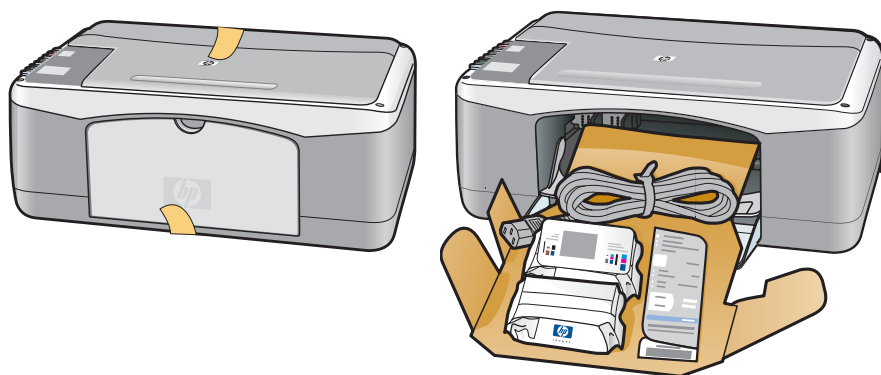


**Important: Do not connect the USB cable until Step 15 or software may not install properly.**

Follow the steps in order. If you have problems during setup, see **Troubleshooting** on page 7.

2

## Remove all tape and components



- a Remove all tape.
- b Lower the paper tray, and then the access door. Remove the shipping material and components.

3

## Locate components



Windows CD



print cartridges



control panel overlay  
(sticker, may be pre-attached)



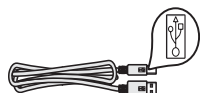
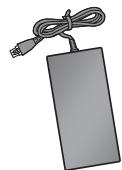
Macintosh CD



power cord and  
adapter



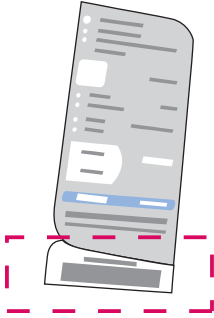
User Guide



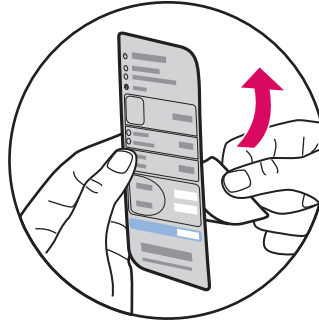
\* USB cable

\* Purchased separately.  
The contents of your box may differ.

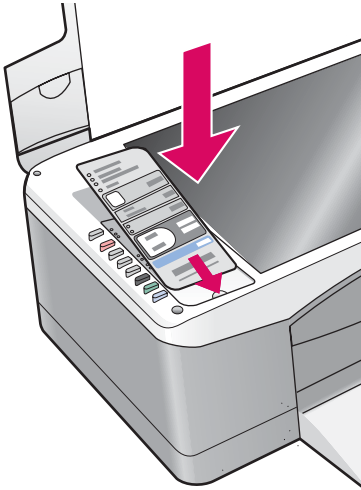
## 4 Attach the control panel overlay (if not attached)



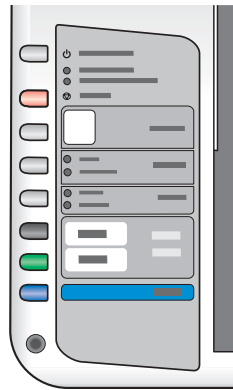
**a** Bend the bottom of the control panel overlay.



**b** Remove the bottom tab and the backing from the overlay.



**c** Lift the lid. Attach the overlay to the device.

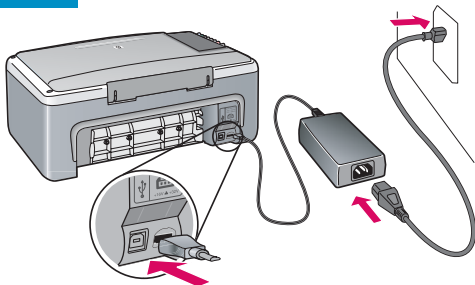


**d** Press down on the overlay to ensure it is firmly attached.



**CAUTION:** The control panel overlay must be attached for the HP All-in-One to work!

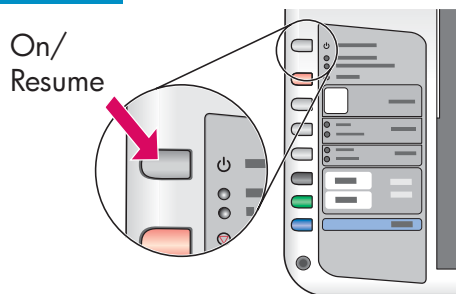
## 5 Connect the power cord and adapter



**Important:** Do not connect the USB cable until instructed later in this guide.

6

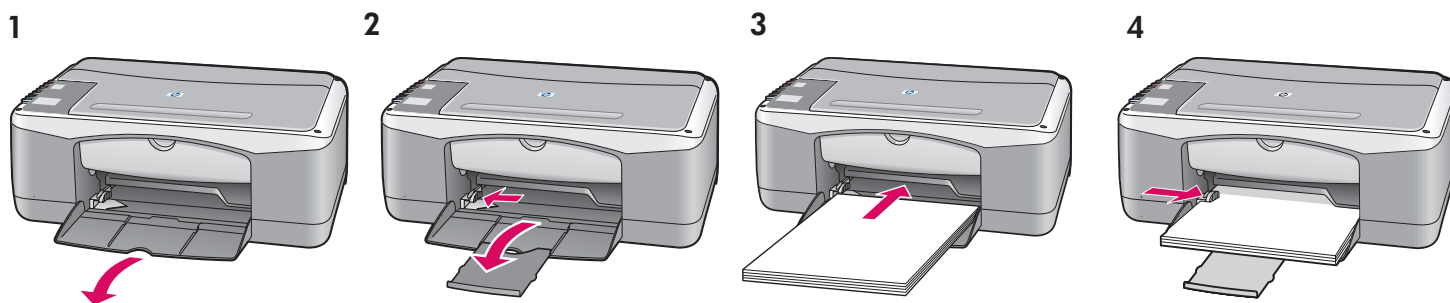
## Press the On/Resume button



After you press the **On/Resume** button, the green light blinks, and then becomes solid. This may take up to a minute.

7

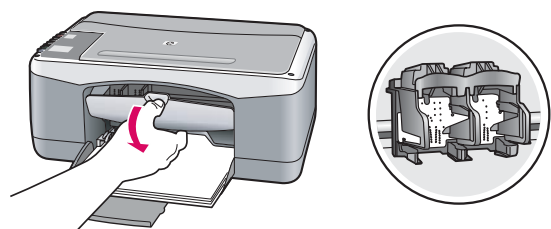
## Load plain white paper



**CAUTION:** To avoid paper jams, do not force paper too far into the tray.

8

## Open access door

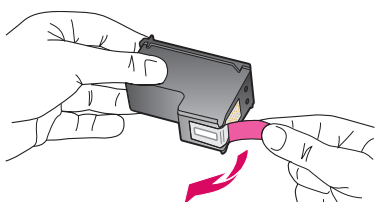


Lower the access door until it stops. Make sure the print carriage moves to the center.

The device must be **On** before you can insert the print cartridges.

9

## Remove tape from both cartridges

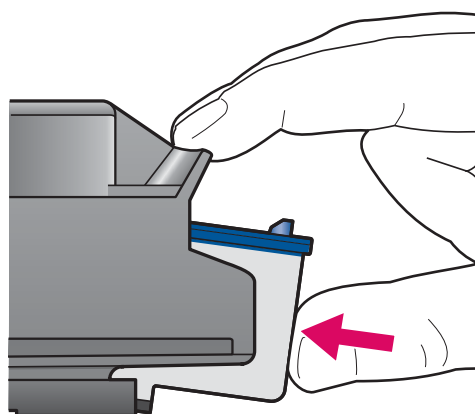
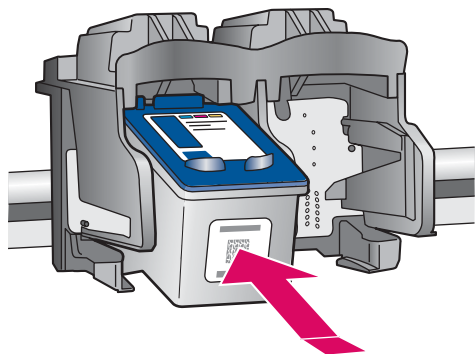
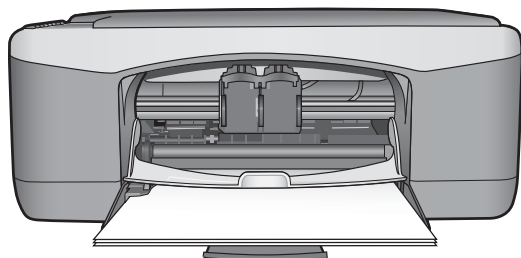


Pull the pink tab to remove the tape from **both** print cartridges.

**CAUTION:** Do not touch the copper-colored contacts or retape the cartridges.

10

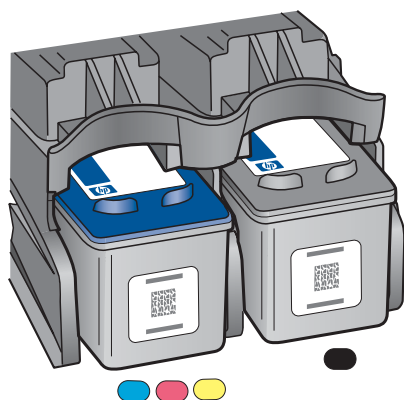
## Insert the tri-color print cartridge



- a** Hold the **tri-color** print cartridge with the blue HP logo on top.
- b** Place the **tri-color** print cartridge in front of the **left** slot.
- c** Push the cartridge firmly into the slot until it snaps into place.

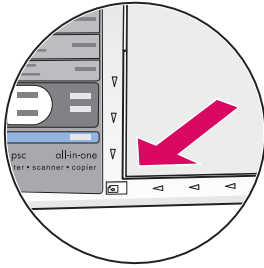
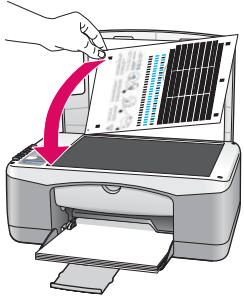
11

## Insert the black print cartridge



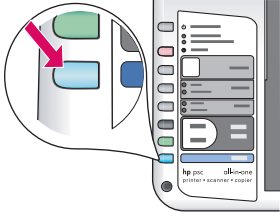
- a** Hold the **black** print cartridge with the blue HP logo on top.
- b** Place the **black** print cartridge in front of the **right** slot.
- c** Push the cartridge firmly into the slot until it snaps into place.
- d** Close the access door.

## 12 Align the print cartridges



After you insert the cartridges, a print cartridge alignment page prints. (This may take a few minutes.)

- a** Lift the lid. Place the top of alignment page face down in the left front corner of the glass. Close the lid.
- b** Press the **Scan** button.



After the **On/Resume** light stops blinking, alignment is complete. Recycle or discard the alignment page.

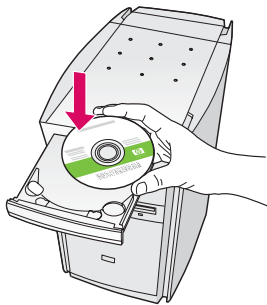
## 13 Turn on your computer



- a** Turn on your computer, login if necessary, and then wait for the desktop to appear.
- b** Close any open programs.

## 14 Choose the correct CD

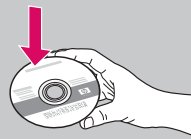
### Windows Users:



- a** Insert the HP All-in-One **Windows** CD.
- b** Follow the onscreen instructions.

If the startup screen does not appear, double-click **My Computer**, double-click the **CD-ROM** icon, and then double-click **setup.exe**.

### Macintosh Users:



- a** Locate the HP All-in-One **Macintosh** CD.
- b** Continue to the next step.

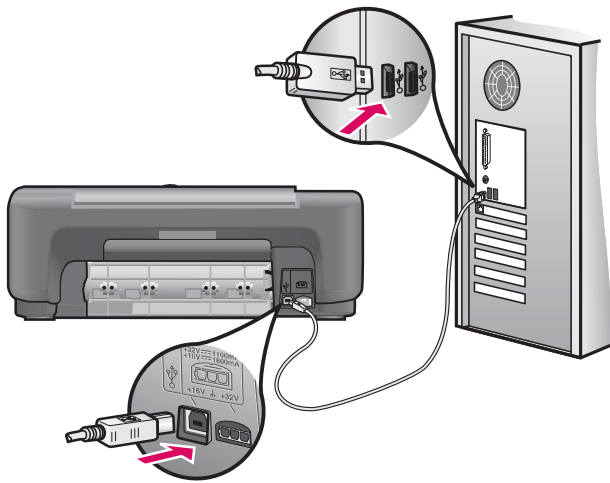
**Windows Users:**

You may have to wait several minutes before you see the onscreen prompt to connect the USB cable.

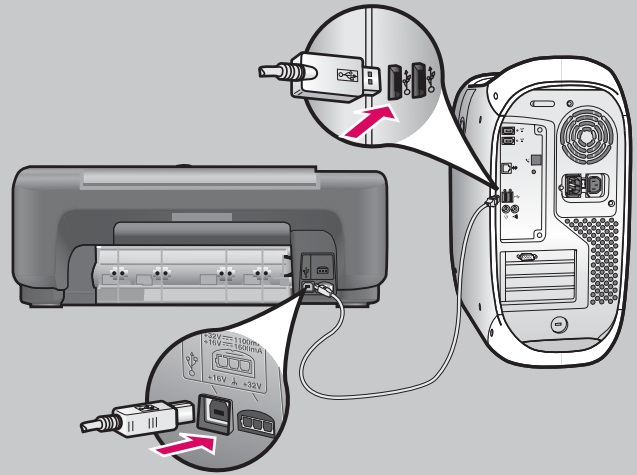
Once the prompt appears, connect the USB cable to the port on the back of the HP All-in-One, and then to **any USB port** on your computer.



If you do not see these screens, see **Troubleshooting** on page 7.

**Macintosh Users:**

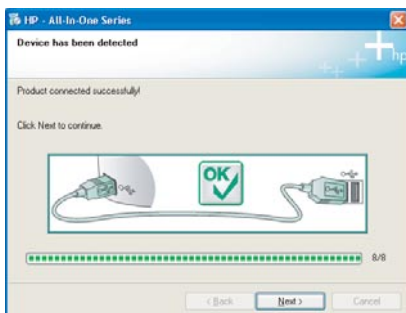
Connect the USB cable to the port on the back of the HP All-in-One, and then to **any USB port** on your computer.



# 16 Finish software installation

## Windows Users:

Follow the onscreen instructions. Complete the **Sign up now** screen. Congratulations on completing the setup!



## Macintosh Users:

- Insert the HP All-in-One **Macintosh** CD.
- Double-click the **HP All-in-One Installer** icon.
- Make sure you complete all screens, including the Setup Assistant. Congratulations on completing the setup!

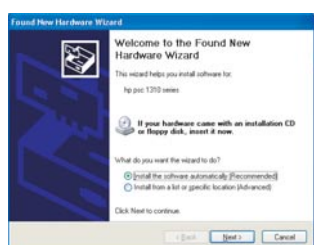


## Troubleshooting



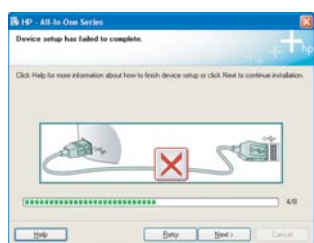
**Problem:** (Windows only) You did not see the screen telling you when to connect the USB cable.

**Action:** Cancel all screens. Remove, and then re-insert the HP All-in-One **Windows** CD. Refer to Step 14.



**Problem:** (Windows only) The **Microsoft Add Hardware** screens appear.

**Action:** Click **Cancel** on all screens. Unplug the USB cable, and then insert the HP All-in-One **Windows** CD. Refer to Steps 14 and 15.



**Problem:** (Windows only) The **Device Setup Has Failed To Complete** screen appears.

**Action:** Verify that the control panel overlay is firmly attached. See Step 4. Unplug the device and plug it in again. Check all connections. Make sure the USB cable is plugged into the computer. Do not plug the USB cable into a keyboard or non-powered hub. See Step 15.



Q7286-90216

- 1 on/resume
- 2 check paper
- 3 check print cartridges
- 4 cancel
- 5 number of copies
- 6 100%
- 7 fit to page
- 8 plain paper
- 9 photo paper
- 10 black copy
- 11 color copy
- 12 scan



**1 On/Resume button:** Powers on. Use after correcting a paper jam or print cartridge problem.

**2 Check Paper light:** Indicates paper is not loaded correctly or there is a jam.

**3 Check Print Cartridges light:** Indicates a print cartridge needs to be cleaned or replaced; or the access door is open.

**4 Cancel button:** Stops a job.

**5 Number of copies button:** Sets the number of copies. An "E" indicates an error. See Chapter 1 in the User Guide.

**6 100% button:** Makes the copy the actual size of the original.

**7 Fit to page button:** Adjusts the copy to the size of the paper.

**8 Plain paper button:** Sets the paper type to plain.

**9 Photo paper button:** Sets the paper type to photo.

**10 Black copy button:** Starts a black and white copy job.

**11 Color copy button:** Starts a color copy job.

**12 Scan button:** Copies the original to the computer.

