

HP LaserJet 1020

Software Technical Reference



HP LaserJet 1020 printer

Software Technical Reference



Copyright

© 2005 Copyright Hewlett-Packard Development Company, L.P.

Reproduction, adaptation or translation without prior written permission is prohibited, except as allowed under the copyright laws.

The information contained herein is subject to change without notice.

The only warranties for HP products and services are set forth in the express warranty statements accompanying such products and services. Nothing herein should be construed as constituting an additional warranty. HP shall not be liable for technical or editorial errors or omissions contained herein.

Edition 1, 4/2005

Trademarks

Adobe® and Acrobat® are trademarks of Adobe Systems Incorporated.

EnergyStar® and the Energy Star logo® are US registered marks of the United States Environmental Protection Agency.



Linux is a U.S. registered trademark of Linus Torvalds.

Microsoft®, Windows®, and Windows NT® are U.S. registered trademarks of Microsoft Corporation.

Pentium® is a registered trademark of Intel Corporation or its subsidiaries in the United States and other countries.

UNIX® is a registered trademark of The Open Group.

Table of contents

1 Introduction

Purpose and scope.....	2
HP LaserJet 1020 printer.....	3
Software availability and fulfillment.....	4
In-box file layout.....	4
HP LaserJet 1020 software CD, Windows partition.....	4
CD language groupings and part numbers.....	4
Ordering software.....	6
Documentation availability and localization.....	8

2 Windows software overview

Windows operating systems.....	12
Supported Windows operating systems.....	12
Supported operating systems.....	12
Driver-only supported operating systems.....	12
Windows system requirements.....	12
Windows supported operating system requirements.....	12
Software component information.....	14
Printing-system software features.....	14
Software component availability.....	14
Software component localization.....	15
HP Software Update utility.....	17
HP Print Screen utility.....	19
Installation.....	19
Activating the utility.....	19
Features.....	19
HP Order Reminder utility.....	22
Available printer configurations.....	23
Software features by connection type.....	23
Direct connection.....	23
Port communication.....	24
Overview.....	24
USB port connections.....	24
Device conflicts in Windows.....	24
Opening the Windows Device Manager.....	24
Check for device conflicts.....	25
Guidelines for troubleshooting and resolving device conflicts.....	25

3 Windows driver features

Host-based features.....	28
Access to drivers.....	28
Help system.....	28
What's this? Help.....	29
Context-sensitive Help.....	29
Constraint messages.....	29
Driver tab features.....	29
Printing Preferences tab set.....	30
Paper/Quality tab features.....	30
Quick Sets.....	31
Default Print Settings.....	31
Type new Quick Set name here.....	31
Paper Options group box.....	32
Size is:.....	32
Custom.....	33
Name.....	34
Save, Delete, or Rename.....	35
Paper Size (width and height controls).....	36
Custom width and height control limits.....	36
Units.....	36
OK.....	36
Use different paper check box.....	37
Source Is: drop-down menu.....	37
Type is: drop-down menu.....	37
Use different paper options.....	38
Back Cover options.....	39
First Page and Other Pages options.....	40
Document preview image.....	41
Effects tab features.....	41
Quick Sets.....	42
Fit to Page options group box.....	42
Print Document On setting.....	42
Scale to Fit option.....	42
% of Normal Size option.....	43
Document preview image.....	43
Watermarks group box.....	44
Current Watermarks.....	45
Watermark Message.....	46
Message Angle.....	46
Font Attribute.....	46
Name.....	46
Color.....	46
Shading.....	47
Size.....	47
Style.....	47
Default settings.....	47
Finishing tab features.....	47

Quick Sets.....	48
Document Options.....	48
Print on Both Sides (Manually) option.....	49
Manually printing on both sides.....	49
Flip Pages Up.....	49
Booklet layout.....	50
Book and Booklet printing.....	50
Printing a Booklet.....	51
Printing a Book.....	51
Pages per Sheet.....	51
Print Page Borders.....	51
Page Order.....	51
Document preview image.....	52
Print Quality.....	52
Print Quality drop-down menu.....	53
Print All Text as Black.....	53
Economode.....	53
Basics tab features.....	53
Quick Sets.....	54
Copies group box.....	54
Orientation.....	55
Portrait option button.....	55
Landscape option button.....	55
Rotated check box.....	55
Document preview image.....	55
About button.....	56
Printer Properties tab set.....	56
Configure tab Features.....	56
Quick Sets.....	57
Jam Recovery.....	58
Status Messages.....	58
Cleaning Page.....	58
Print Density.....	58
Courier Font Type.....	58
Properties tab features - Windows 98 SE and Windows Me.....	58

4 Windows software installation

Installation overview.....	62
Installation options.....	63
Windows installation for direct connections.....	63
Setting up Windows sharing (peer-to-peer networking).....	63
Setting up the host computer running Windows 98 SE, Windows Me, or Windows 2000.....	64
Setting up the host computer running Windows XP.....	64
Setting up client computers running Windows 98 SE, Windows Me, or Windows 2000.....	64
Setting up client computers running Windows XP.....	65
Installing the printer driver only.....	65
Printer-driver installation for Windows 98 SE.....	65
Printer-driver installation for Windows 2000 or XP.....	66

Plug-n-Play.....	66
Add Printer Wizard.....	66
Installation dialog-box options for Windows.....	67
Installing the software before the printer is connected to the computer.....	67
Installing the software when the printer is already connected to a computer.....	73
Uninstall.....	83
Uninstall instructions for Windows.....	83
Uninstalling using the HP program group (recommended).....	83
Uninstalling using Windows Add/Remove programs feature.....	85
Removing the HP Software Update utility.....	89
Index.....	91

List of tables

Table 1-1	Features of the HP LaserJet 1020 printer.....	3
Table 1-2	CD language groupings for Windows installation.....	4
Table 1-3	User documentation availability and localization.....	8
Table 2-1	Software component availability for the HP LaserJet 1020 printer.....	14
Table 2-2	Language key A-I.....	15
Table 2-3	Software component localization by language, A-I.....	16
Table 2-4	Languagekey, L-Z.....	16
Table 2-5	Software component localization by language, K-Z	16
Table 3-1	Name drop-down menu text strings.....	35
Table 3-2	Host-based custom media sizes.....	36
Table 3-3	OK dialog box text strings.....	37
Table 3-4	Standard media types.....	38
Table 3-5	Page orientation.....	50

List of figures

Figure 2-1	Welcome screen - HP Software Update.....	17
Figure 2-2	New software is available screen - HP Software Update.....	18
Figure 2-3	HP Print Screen - system tray icon.....	19
Figure 2-4	HP Print Screen - configuration dialog box.....	20
Figure 2-5	HP Cartridge Order Reminder screen.....	22
Figure 3-1	A typical constraint message.....	29
Figure 3-2	Paper/Quality tab.....	30
Figure 3-3	Paper Options group box.....	32
Figure 3-4	Custom Paper Size dialog box.....	33
Figure 3-5	Back Cover setting.....	39
Figure 3-6	First Page and Other Page options.....	40
Figure 3-7	Effects tab.....	41
Figure 3-8	Preview images - Legal on Letter; Scale to Fit off (left) and on (right).....	43
Figure 3-9	Watermark Details.....	45
Figure 3-10	Finishing tab.....	48
Figure 3-11	Print on Both Sides Instructions.....	49
Figure 3-12	Page-order preview images.....	52
Figure 3-13	Basics tab.....	54
Figure 3-14	About This Driver dialog box.....	56
Figure 3-15	Configure tab.....	57
Figure 3-16	Properties tabs - Windows 98 SE.....	59
Figure 4-1	Step 1 - CD Browser screen.....	67
Figure 4-2	Step 2 - HP Software License Agreement screen.....	68
Figure 4-3	Step 3 - Model Selection screen.....	69
Figure 4-4	Step 4 - Start Copying Files screen.....	70
Figure 4-5	Step 5 - Installation Status screen.....	70
Figure 4-6	Step 6 - USB Cable Connect screen.....	71
Figure 4-7	Step 7 - Finish screen.....	71
Figure 4-8	Step 8 - Registration screen.....	72
Figure 4-9	Step 9 - Exit Setup screen.....	72
Figure 4-10	Step 1 - Add Printer Wizard Welcome Screen.....	73
Figure 4-11	Step 2 - Local or Network Printer screen.....	74
Figure 4-12	Step 3 - Select the Printer Port screen.....	75
Figure 4-13	Step 4 - Manufacturer and model screen.....	76
Figure 4-14	Step 5 - Install from Disk.....	76
Figure 4-15	Step 6 - Select the correct language.....	77
Figure 4-16	Step 7 - Select the .INF file.....	77
Figure 4-17	Step 8 - Install from Disk, screen 2.....	78
Figure 4-18	Step 9- Manufacturer and model screen 2.....	78
Figure 4-19	Step 10 - Name Your Printer screen.....	79

Figure 4-20	Step 11 - Printer Sharing screen.....	80
Figure 4-21	Step 12 - Print Test Page screen.....	81
Figure 4-22	Step 13 - Completing the Add Printer Wizard screen.....	82
Figure 4-23	Welcome to the LaserJet 1020 series uninstall Wizard dialog box.....	83
Figure 4-24	Remove the Program dialog box.....	84
Figure 4-25	Uninstalling the HP LaserJet 1020 series dialog box.....	84
Figure 4-26	Restart dialog box.....	85
Figure 4-27	Windows Control Panel.....	86
Figure 4-28	Windows Change or Remove programs.....	87
Figure 4-29	Remove the Program dialog box.....	88
Figure 4-30	Uninstalling the HP LaserJet 1020 series dialog box.....	88
Figure 4-31	Restart dialog box.....	89

1 Introduction

This chapter provides information about the following topics:

- [Purpose and scope](#)
- [HP LaserJet 1020 printer](#)
- [Software availability and fulfillment](#)
- [Documentation availability and localization](#)

Purpose and scope

This software technical reference (STR) provides information about and troubleshooting tips for the printing-system software for the HP LaserJet 1020 printer.

This document is prepared in an electronic format to serve as a quick-reference tool for Customer Care Center (CCC) agents, support engineers, system administrators, management information systems (MIS) personnel, and end users, as appropriate.



NOTE This STR describes drivers that are shipped on the printing-system software CD that comes with the product. This STR does *not* cover drivers that will become available on the Web.

The following information is included in this STR:

- Overview of driver and operating systems
- Procedures for installing and uninstalling software components



NOTE An addendum to this STR describes system modification information, including file lists and changes to registry keys.

HP LaserJet 1020 printer

The following table lists features of the HP LaserJet 1020 printer.

Table 1-1 Features of the HP LaserJet 1020 printer

Feature	HP LaserJet 1020 printer
HP Product number	Q5911A
Memory	<ul style="list-style-type: none"> ■ 2 megabytes (MB) of random access memory (RAM)
Speed	<ul style="list-style-type: none"> ■ Prints up to 15 pages per minute (ppm) for letter-size paper ■ Prints up to 14 ppm for A4-size paper ■ First-page-out speed: less than 10 seconds
Connectivity	<ul style="list-style-type: none"> ■ Universal serial bus (USB) 2.0 compatible
Paper-handling	<ul style="list-style-type: none"> ■ One 10-sheet priority input slot (tray 1) ■ One 250-sheet tray (tray 2) for standard media sizes
Print	<ul style="list-style-type: none"> ■ 600 dots per inch (dpi) ■ FastRes 1200: 600x600 dots per inch (dpi) ■ Host-based ■ 2000-page capacity black print cartridge ■ EconoMode (saves toner)
Control panel	Two light-emitting diodes (LEDs)



NOTE Because the HP LaserJet 1020 printer does not have a parallel port, it does not support MS-DOS, Windows® 95, Windows 98 (first edition), or Windows NT®. These operating systems require a parallel port and do not support USB connections.

Software availability and fulfillment

The software CD for the HP LaserJet 1020 printer contains a variety of files for installing the printing-system software on your computer. This section describes the files that are available on the software CD, as well as additional support and fulfillment information.

In-box file layout

The HP LaserJet 1020 printing-system software consists of documentation files and files that are required to install and uninstall the system.

HP LaserJet 1020 software CD, Windows partition

The HP LaserJet 1020 printing-system software is delivered on a CD that is included with the product. The CD include the following files:

- Installation files
- Uninstall files
- Printer driver
- Online Help
- OrderReminder
- .CHM version of the HP LaserJet 1020 printer User Guide
- .PDF version of the HP LaserJet 1020 printer User Guide
- Registration link
- Readme
- Late-breaking readme (English only)
- Status-message files

To view the directories and support files, insert the HP LaserJet 1020 printing-system software CD into the CD-ROM drive on your computer, right-click **Start**, click **Explore**, and then select the CD-ROM drive.

CD language groupings and part numbers

The following table presents the Windows installation part numbers and language groups that are included on the software CDs for the product.

Table 1-2 CD language groupings for Windows installation

CD	Part Number	Languages
1	Q5912-60104	<ul style="list-style-type: none"> ■ Arabic ■ Bahasa ■ Bulgarian

Table 1-2 CD language groupings for Windows installation (continued)

		■ Catalan
		■ Croatian
		■ Czech
		■ Danish
		■ Dutch
		■ English
		■ Estonian
		■ Finnish
		■ French
		■ German
		■ Greek
		■ Hebrew
		■ Hungarian
		■ Italian
		■ Kazakh
		■ Korean
		■ Latvian
		■ Lithuanian
		■ Norwegian
		■ Polish
		■ Portuguese, Brazilian
		■ Romanian
		■ Russian
		■ Simplified Chinese
		■ Slovak
		■ Slovenian
		■ Spanish
		■ Swedish
		■ Thai
		■ Traditional Chinese
		■ Ukrainian
2 (North America only. Contains an electronic version of the HP LaserJet 1020 Start Guide)	Q5911-60102	■ Arabic
		■ Bahasa

Table 1-2 CD language groupings for Windows installation (continued)

- Bulgarian
- Croatian
- Czech
- Danish
- Dutch
- English
- Estonian
- Finnish
- Greek
- Hebrew
- Hungarian
- Kazakh
- Korean
- Latvian
- Lithuanian
- Norwegian
- Polish
- Portuguese, Brazilian
- Romanian
- Russian
- Simplified Chinese
- Slovak
- Slovenian
- Swedish
- Thai
- Traditional Chinese
- Ukrainian

Ordering software

If you need a replacement CD or a newer version of the product software, go to the following Web site:

www.hp.com/go/lj1020_software

Click **CD Order Page** to order, or click **Download drivers and software** to get the software update.

To request the software CD by phone, see the following Web site for the correct contact number for your country/region:

www.hp.com/country/us/en/wwcontact.html

Documentation availability and localization

The documentation in the following table is available for the product.

Table 1-3 User documentation availability and localization

Document name	Languages	Location
<i>HP LaserJet 1020 printer User Guide</i>	■ Arabic	The <i>HP LaserJet 1020 printer User Guide</i> is available in electronic format on the HP LaserJet 1020 software CD.
	■ Bahasa	
	■ Bulgarian	
	■ Catalan	This guide is also available by clicking Manuals at the following Web site: www.hp.com/support/lj1020
	■ Croatian	
	■ Czech	
	■ Danish	
	■ Dutch	
	■ English	
	■ Estonian	
	■ Finnish	
	■ French	
	■ German	
	■ Greek	
	■ Hebrew	
	■ Hungarian	
	■ Italian	
	■ Kazakh	
	■ Korean	
	■ Latvian	
	■ Lithuanian	
	■ Norwegian	
	■ Polish	
	■ Portuguese, Brazilian	
	■ Romanian	
	■ Russian	
	■ Simplified Chinese	
	■ Slovak	
	■ Slovenian	

Table 1-3 User documentation availability and localization (continued)

	<ul style="list-style-type: none"> ■ Spanish ■ Swedish ■ Thai ■ Traditional Chinese ■ Ukrainian 	
<i>HP LaserJet 1020 Series Printer Welcome Mat</i>	<ul style="list-style-type: none"> ■ Arabic ■ Bahasa ■ Bulgarian ■ Catalan ■ Croatian ■ Czech ■ Danish ■ Dutch ■ English ■ Estonian ■ Finnish ■ French ■ German ■ Greek ■ Hebrew ■ Hungarian ■ Italian ■ Kazakh ■ Korean ■ Latvian ■ Lithuanian ■ Norwegian ■ Polish ■ Portuguese, Brazilian ■ Romanian ■ Russian ■ Simplified Chinese ■ Slovak 	<p>The <i>HP LaserJet 1020 Series Printer Welcome Mat</i> is available in electronic format on the HP LaserJet 1020 software CD.</p> <p>This guide is also available by clicking Manuals at the following Web site:</p> <p>www.hp.com/support/lj1020</p>

Table 1-3 User documentation availability and localization (continued)

<ul style="list-style-type: none">■ Slovenian■ Spanish■ Swedish■ Thai■ Traditional Chinese■ Ukrainian		
<i>HP LaserJet 1020 Printing System Install Notes</i>	English	The <i>HP LaserJet 1020 Printing System Install Notes</i> are available in electronic format on the HP LaserJet 1020 software CD.

2 Windows software overview

This chapter provides information about the following topics:

- [Windows operating systems](#)
- [Software component information](#)
- [HP Software Update utility](#)
- [HP Print Screen utility](#)
- [HP Order Reminder utility](#)
- [Available printer configurations](#)
- [Port communication](#)

Windows operating systems

This section contains information about the following topics:

- [Supported Windows operating systems](#)
- [Windows system requirements](#)

Supported Windows operating systems

The HP LaserJet 1020 printing-system software supports the following operating systems.

Supported operating systems

The following Windows operating systems are fully supported through the software installer and drivers available on the software CD that comes with the HP LaserJet 1020 printer:

- Microsoft® Windows 98 SE
- Microsoft Windows Millennium Edition (Windows Me)
- Microsoft Windows 2000
- Microsoft Windows XP (32-bit)
- Microsoft Windows Longhorn 32



NOTE Because the HP LaserJet 1020 printer does not have a parallel port, it does not support MS-DOS, Windows 95, Windows 98 (first edition), or Windows NT. These operating systems require a parallel port and do not support USB connections.

Driver-only supported operating systems

The following Windows operating system has print-driver-only support by the HP LaserJet 1020 printing-system software:

- Microsoft Windows 2003 Server (32-bit) - print driver included on the printing-system CD

Windows system requirements

For print-driver-only support, the HP LaserJet 1020 printing-system software has the following minimum system requirements.

Windows supported operating system requirements

- Processor and RAM requirements:
 - For Windows 98 SE and Windows ME: a computer with at least a Pentium® 166 MHz processor and 32 MB of RAM
 - For Windows 2000: a computer with at least a Pentium 166 MHz processor and 64 MB of RAM
 - For Windows XP: a computer with at least a Pentium 233 MHz processor and 128 MB of RAM
- 150 MB or more of free hard-disk space

- CD-ROM drive (required for installation)
- Works with USB and Hi-Speed USB systems and cables

Software component information

This section contains information about the following topics:

- [Printing-system software features](#)
- [Software component availability](#)
- [Software component localization](#)

Printing-system software features

The printing-system software for the HP LaserJet 1020 Series printer includes the following features:

- **New Installer.** The product includes a new installer that improves the software installation process and supports either a hardware-first or a software-first installation.
 - Software-first is the recommended installation method.
 - In a hardware-first installation, the HP LaserJet 1020 printing-system software uses two separate installers, which run together to set up the port and the printing-system software correctly. If you cancel the installation after the hardware-first plug-and-play installer finishes, your installation consists of the print driver only.
- **HP Software Update utility.** The HP Software Update utility is a software program that locates the latest updates that you need for the HP hardware and software installed on your system, and gives you the choice of which updates to install.
- **HP Print Screen utility.** The HP Print Screen utility is a software program that you can use to print the current screen of the PC to the default printer. You can also use the HP Print Screen feature to save the screen to an image file.
- **HP Order Reminder utility.** The HP Order Reminder utility is a software program that you can use to set specific times for reminders to check the current level of toner in the print cartridge. HP Order Reminder also contains a link to a Web page that helps you order supplies online from a reseller of your choice.

Software component availability

The following table lists the availability of the HP LaserJet 1020 printing-system software components by operating system.



NOTE In the following table, "98 SE/Me" refers to Windows 98 SE and Windows Me; "2K/XP" refers to Windows 2000 and Windows XP.

Table 2-1 Software component availability for the HP LaserJet 1020 printer

Component	98 SE/Me	2K/XP
Drivers		
Host-based driver	X	X
Installers		
Common Windows Installer	X	X

Table 2-1 Software component availability for the HP LaserJet 1020 printer (continued)

Component	98 SE/Me	2K/XP
CD Browser	X	X
Fonts	X	X
.INF File (Add Printer)	X	X
Bidirectional communication		
Direct Connect Bidirectional Communications	X	X
Remote management and status		
Online Documentation		
<i>HP LaserJet 1020 printer User Guide</i> ¹	X	X
<i>HP LaserJet 1020 Printing System Install Notes</i>	X	X
Help systems	X	X
Other		
HP Software Update program	X	X
HP Print Screen program	X	X
HP Order Reminder program	X	X

¹ This document is also available at www.hp.com/support/lj1020.

Software component localization

The following tables provide localization information about the printing-system software components.

Table 2-2 Language key A-I

AR = Arabic	ES = Spanish
CS = Czech	FI = Finnish
DA = Danish	FR = French
DE = German	HE = Hebrew
EL = Greek	HU = Hungarian
EN = English	IT = Italian

Table 2-3 Software component localization by language, A-I

Component ¹	Operating system	AR	CS	DA	DE	EL	EN	ES	FI	FR	HE	HU	IT
Host-based driver	98 SE, Me, 2000, XP	X	X	X	X		X	X	X	X	X	X	X
Common Windows Installer	98 SE, Me, 2000, XP	X	X	X	X	X	X	X	X	X	X	X	X
Online manuals	98 SE, Me, 2000, XP	X	X	X	X		X	X	X	X	X	X	X
Online Help	98 SE, Me, 2000, XP	X	X	X	X	X	X	X	X	X	X	X	X

¹ Components that are not available in a specific language are supported in English.

Table 2-4 Languagekey, L-Z

KO = Korean	SV = Swedish
NL = Dutch	TH = Thai
NO = Norwegian	TR = Turkish
PL = Polish	ZHCN = Simplified Chinese
PT = Portuguese	ZHTW = Traditional Chinese
RU = Russian	

Table 2-5 Software component localization by language, K-Z

Component ¹	Operating system	KO	NL	NO	PL	PT	RU	SV	TH	TR	ZHCN	ZHTW
Host-based driver	98 SE, Me, 2000, XP	X	X	X	X	X	X	X	X	X	X	X
Common Windows Installer	98 SE, Me, 2000, XP	X	X	X	X	X	X	X	X	X	X	X
Online manuals	98 SE, Me, 2000, XP	X	X	X	X	X	X	X	X	X	X	X
Online Help	98 SE, Me, 2000, XP	X	X	X	X	X	X	X	X	X	X	X

¹ Components that are not available in a specific language are supported in English.

HP Software Update utility

The HP Software Update utility is installed with the HP LaserJet 1020 printing-system software. The HP Software Update utility provides an easy and convenient way to keep your HP software programs and HP products up-to-date. The HP Software Update utility locates the latest updates that you need for the HP hardware and software installed on your system, and gives you the choice of which updates to install.

To gain access to the HP Software Update utility, click **Start**, click **Programs**, select **HP**, and then click **HP Software Update**.

From the **Welcome** screen, you can perform the following tasks:

- Configure the HP Software Update utility
- View the data that the HP Software Update utility has collected
- View HP's privacy policy
- View frequently asked questions about the HP Software Update utility
- View the End User License Agreement
- Send feedback to HP

The following illustration shows the **Welcome** screen for the HP Software Update utility.



Figure 2-1 Welcome screen - HP Software Update



NOTE At the time of the writing of this manual the only update available is an update to HP Software Update Version 3.0.1.

When you click **Next**, the following screen appears.

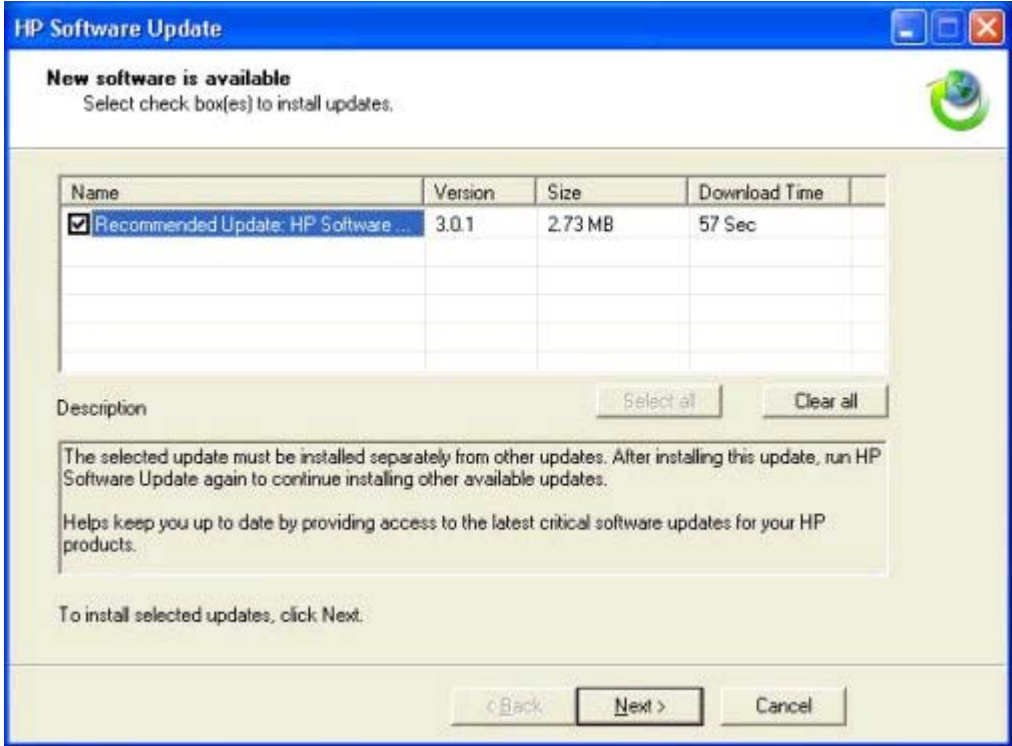


Figure 2-2 New software is available screen - HP Software Update

HP Print Screen utility

HP Print Screen is utility software that you can use to print the current computer screen on the default printer. You can also use the utility to save the screen to an image file.

Installation



NOTE Administrator installations do not install the HP Print Screen program or the HP Web Update utility.

HP Print Screen is a self-contained software program that is installed silently when you install the HP LaserJet 1020 printing-system software.

To open the HP Print Screen utility, click **Start**, click **Programs**, select **HP**, and then click **HP Print Screen**. The configuration dialog box provides the option to run the HP Print Screen utility when Windows is started.

The following path is the installation location for the HP Print Screen utility:

<preferred location>\HP\HP PRINT SCREEN

HP Print Screen is removed from your computer when you uninstall the HP LaserJet 1020 printing-system software.

The HP Print Screen utility supports the same operating systems as the printing-system software. To see a list of supported operating systems, see [Supported Windows operating systems](#).

Activating the utility

The HP Print Screen utility can only be started by clicking **Start**, clicking **Programs**, selecting **HP**, and then clicking **HP Print Screen**. The utility then runs as a system-tray icon, and you can print the current screen when you press the **PrtScn** key or the **Alt + PrtScn** key combination on the keyboard.



NOTE The configuration dialog box also appears when you press the **PrtScn** key or the **Alt + PrtScn** key combination on the keyboard

The configuration dialog box can be opened in any of the following ways:

- Click **Start**, click **Programs**, select **HP**, and then click **HP Print Screen**.
- Press the **PrtScn** key or the **Alt + PrtScn** key combination on the keyboard after the HP Print Screen icon appears in the system tray.
- Mouse over the HP Print screen icon in the system tray, right-click, and then click **Configure** in the context menu.

Features

When the software starts, the HP Print Screen icon appears in the system tray.



Figure 2-3 HP Print Screen - system tray icon

When this icon is visible, a configuration dialog box appears when you press the **PrtScn** key or the **Alt + PrtScn** key combination on the keyboard.

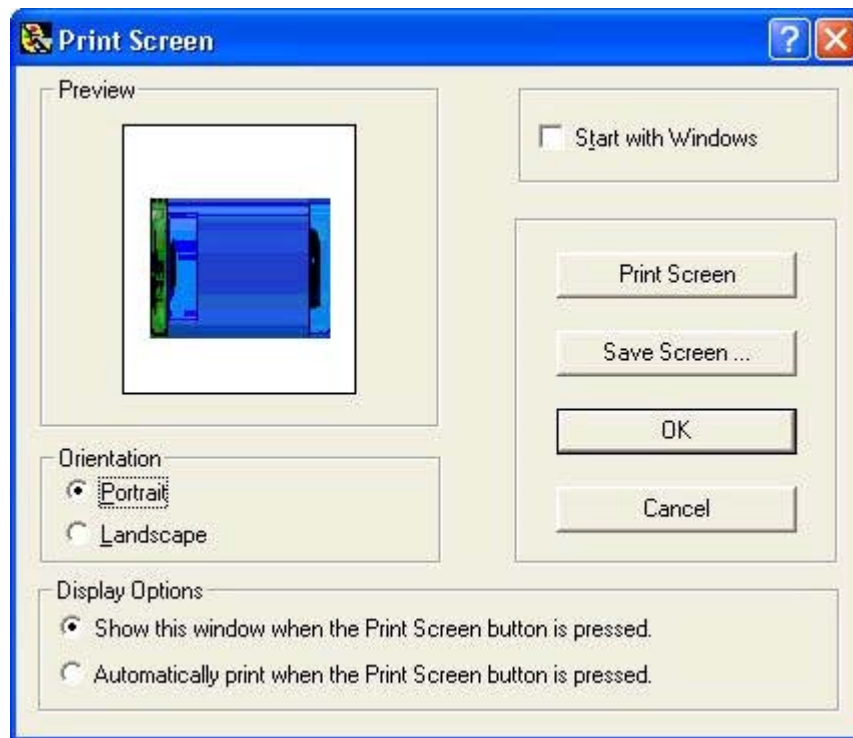


Figure 2-4 HP Print Screen - configuration dialog box

In the configuration dialog box, you can perform the following tasks:

- Print the current screen by clicking **Print Screen**.
- Save the screen to an image file by clicking **Save Screen ...**.
 - The keys that you press on the keyboard determine the current screen. If you use the HP Print Screen interface, the entire desktop is captured. If you press the **Alt + PrtScn** key combination on your keyboard, the active window is captured.
 - After the HP Print Screen utility is started, pressing the **PrtScn** key or the **Alt + PrtScn** key combination does *not* update the HP Print Screen dialog box.
 - The HP Print Screen preview always shows the clipboard content (in bitmap format only) that was there before you opened the HP Print Screen dialog box.
 - Control the orientation of the screen before sending the print job to the default printer or before saving to an image file.
- Enable or disable the option to have the HP Print Screen utility run automatically when you start Windows.
- If you have selected the **Automatically print when the Print Screen button is pressed** option, and then pressed the **PrtScn** key or the **Alt + PrtScn** key combination on your keyboard, the HP Print Screen utility dialog box does *not* appear, but the screen capture is sent automatically to the default printer.

- All of the setting in this dialog box are retained unless they are changed within the configuration or for a specific job. The following are the default values for the settings:
 - Do not start with Windows
 - Orientation is landscape
 - Automatically open the configuration dialog box when you press the **PrtScn** key or the **Alt + PrtScn** key combination on your computer keyboard
- Context-sensitive help opens when you click ? and then click the configuration dialog box control that you want information about.
- The HP Print Screen utility is localized in the following languages:
 - Czech
 - Danish
 - Dutch
 - English
 - Finnish
 - French
 - German
 - Greek
 - Hungarian
 - Italian
 - Korean
 - Norwegian
 - Polish
 - Portuguese (Brazilian)
 - Russian
 - Spanish
 - Swedish
 - Simplified Chinese
 - Traditional Chinese
 - Turkish

HP Order Reminder utility

The HP Order Reminder utility is installed with the HP LaserJet 1020 printing-system software. The HP Order Reminder utility provides an easy and convenient way to set specific times for reminders to check the current level of toner in the print cartridge. You can also use the utility to disable the reminder.

HP Order Reminder also contains an **Order Now** link to a Web page that helps you order supplies online from a reseller of your choice.

To gain access to the HP Order Reminder utility, click **Start**, select **Programs**, select **Hewlett-Packard**, select **OrderReminder**, and then click **OrderReminder HP LaserJet 1020**.

The following illustration shows the **HP Cartridge Order Reminder** screen .



Figure 2-5 HP Cartridge Order Reminder screen

The **HP Cartridge Order Reminder** screen offers the following options in the **Remind me in** drop-down menu:

- 1 day
- 1 week
- 2 weeks
- 1 month
- 6 months
- 1 year

Available printer configurations

This section contains information about the following topics:

- Software features by connection type
- Supported configurations

Software features by connection type

The HP LaserJet 1020 printing-system software can be used with the product in the following configuration:

- Directly connected to a computer. If the product is connected to a computer running Windows 98 SE, Windows Me, Windows 2000, or Windows XP, you can share the product with other network users through Windows sharing.

Direct connection

In the direct (or local) configuration, the product is connected directly to the host computer with a universal serial bus (USB) cable. In this configuration, the product is not shared. A single user has complete control of the product. You can gain access to all of the capabilities of the product in this configuration.

Port communication

This section provides information about the following topics:

- [Overview](#)
- [USB port connections](#)
- [Device conflicts in Windows](#)

Overview

The product is connected through the USB port.

USB port connections

USB 2.0 is an input/output mode that both Windows and Macintosh computers support. A wide variety of consumer devices, such as digital cameras and scanners, also support USB. Note that the HP LaserJet 1020 printer is compatible with USB 2.0 specifications.

A distinction exists between a USB Host and a USB Device. The HP LaserJet 1020 printer is a USB Device. It can only connect to a USB Host or a USB Hub.

Device conflicts in Windows

When two-way communication cannot be established with the product, the Windows Device Manager might show a conflict. Conflicts should be resolved immediately, and before continuing to troubleshoot two-way communication issues. The following sections contain a few guidelines for identifying and resolving these conflicts.



NOTE This process applies to both USB and parallel port devices. However, USB devices are only supported in Windows 98 SE, Windows Me, Windows 2000, and Windows XP.

Opening the Windows Device Manager

Follow these steps to open the Windows Device Manager.

- 1 For Windows 98 SE, Windows Me, and Windows 2000, click **Start**, click **Settings**, and then click **Control Panel**.

For Windows XP, click **Start**, and then click **Control Panel**.

- 2 Double-click the **System** icon.
- 3 On the **Hardware** tab, click **Device Manager**.



NOTE In Windows 98 SE, click the **Device Manager** tab.

Check for device conflicts

Follow these steps to check for device conflicts.

- 1 Look for devices that appear on the list with a yellow exclamation mark (!) or a red X.
- 2 Identify port conflicts by double-clicking **Port** or by clicking the plus sign (+). Conflicts here usually interfere with two-way communication.
- 3 To check the status of a device, click the device name, and then click **Properties**. The **Device Status** appears in the middle of the dialog box.
- 4 To check the **Conflicting Device** list, click the device name, and then click **Properties**. Click the **Resources** tab, and look at the **Conflicting Device** list at the bottom of the dialog box.
- 5 Click the plus sign (+) to the left of **Open the Other Devices**. Misidentified or noncategorized devices appear here.

Guidelines for troubleshooting and resolving device conflicts

Follow these steps for resolving device conflicts.

- 1 If the conflicting device is no longer present in the list of devices, click the device name, click **Remove**, and then click **Yes**. Click **Yes** to restart Windows.
- 2 If the conflicting device is a duplicate (and one of the duplicate listings does *not* show a conflict), click the name(s) of the device(s) that have a conflict, click **Remove**, and then click **Yes**. Click **Yes** to restart Windows.



NOTE You might not need to restart the computer in Windows 2000 or Windows XP, depending on the type of port conflict that you are resolving.

- 3 If a device has a conflict and you have the driver for that device, remove the device and then reinstall it. After removing the device, restart the computer. When Windows reinstalls devices, it usually finds nonconflicting resources.

3 Windows driver features

This chapter provides information about the following topic:

- [Host-based features](#)

Host-based features



NOTE Host-based printing differs from PCL printing by computing the print job on the host computer rather than computing the print job in the product formatter.

This section contains the following information:

- Access to drivers
- Help system
- Driver-tab features

Access to drivers

To gain access to driver settings from within most software programs, click **File**, click **Print**, and then click **Properties**. The appearance and names of the driver tab can vary, depending on the operating system. These settings apply only while the software program is open.

You can also control the drivers directly from the **Printers** folder. These settings change the default settings that are used across all software programs.

- In Windows 2000, click **Start**, click **Settings**, click **Printers**, right-click the product name, and then click **Printing Preferences** to gain access to the same set of driver tabs that the software program controls.
- In Windows XP, click **Start**, click **Printers and Faxes** (Windows XP Professional) or **Printers and Other Hardware Devices** (Windows XP Home), right-click the product name, and then click **Printing Preferences** to gain access to the same set of driver tabs that the software program controls.

If, after right-clicking the product name, you click **Properties**, you gain access to a different set of tabs that control the driver behavior and driver connections. For information about the **Properties** tabs that are described in this chapter, see the [Printer Properties tab set](#) section.

Help system

The Host-based driver includes a full-featured Help system to provide assistance with printing and configuration options. The following Help options are available:

- What's this? Help
- Context-sensitive Help
- Constraint messages

What's this? Help

"What's this?" Help is supported in Windows 2000 and Windows XP. You can gain access to "What's this?" Help messages in any of the following ways:

- Right-click a control or option and then click **What's this?**, and a pop-up Help window appears.
- Click the **?** button at the upper-right corner of the frame, next to the **X**, to change the cursor to an arrow with a question mark. Use this special cursor to select a control or option, and the pop-up Help window for that feature appears.
- Press the **F1** key, and the Help window for the currently selected control or option appears.

Context-sensitive Help

Press the **Help** button on a driver tab or in a dialog box, and context-sensitive Help appears.

Constraint messages

Constraint messages are unsolicited messages that appear in response to specific actions that you take. These messages alert you to selections that are illogical or impossible given the capabilities of the product or the current settings of other controls. For example, if you click **Print on Both Sides (Manually)** and then change the media type to **Transparency**, a message appears asking you to resolve this conflict.

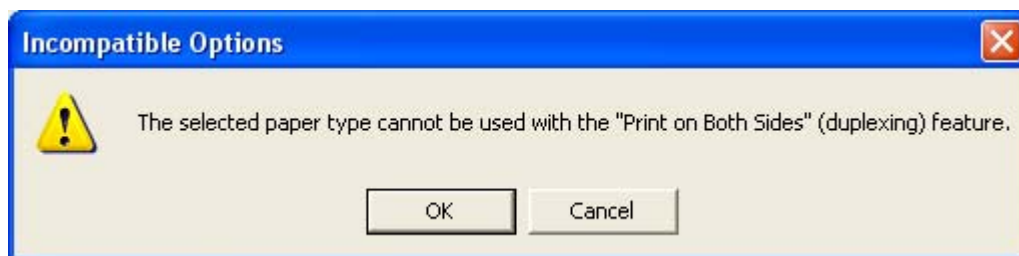


Figure 3-1 A typical constraint message

Whenever a constraint message appears with **Restore my previous settings** and **Keep this setting, and I will change it later** buttons, the interpretation of the buttons is as follows:

- Clicking **OK** accepts the change that was just made, and the driver then resets the conflicting control to a setting that is compatible with the new value.
- Clicking **Cancel** rejects the change that was just made, and the control remains set at its previous value.

Driver tab features

This section describes the options that are available on each tab of the Host-based driver interfaces. The following information is included:

- **Printing Preferences** tab set
- **Printer Properties** tab set

Printing Preferences tab set

The **Printing Preferences** tabs contain information for formatting documents for the product. You can gain access to the **Printing Preferences** tabs either through your software program or through the Windows **Printers** folder. For more information, see the [Access to drivers](#) section for Windows 2000 and Windows XP.

The following tabs are included in the **Printing Preferences** tab set:

- **Paper/Quality** tab
- **Effects** tab
- **Finishing** tab
- **Basics** tab

Paper/Quality tab features

Use the **Paper/Quality** tab to specify the size, type, and source of the print media. You can also use this tab to configure different media-selection choices for the first page, other pages, and back cover of the document. The following illustration shows the **Paper/Quality** tab.

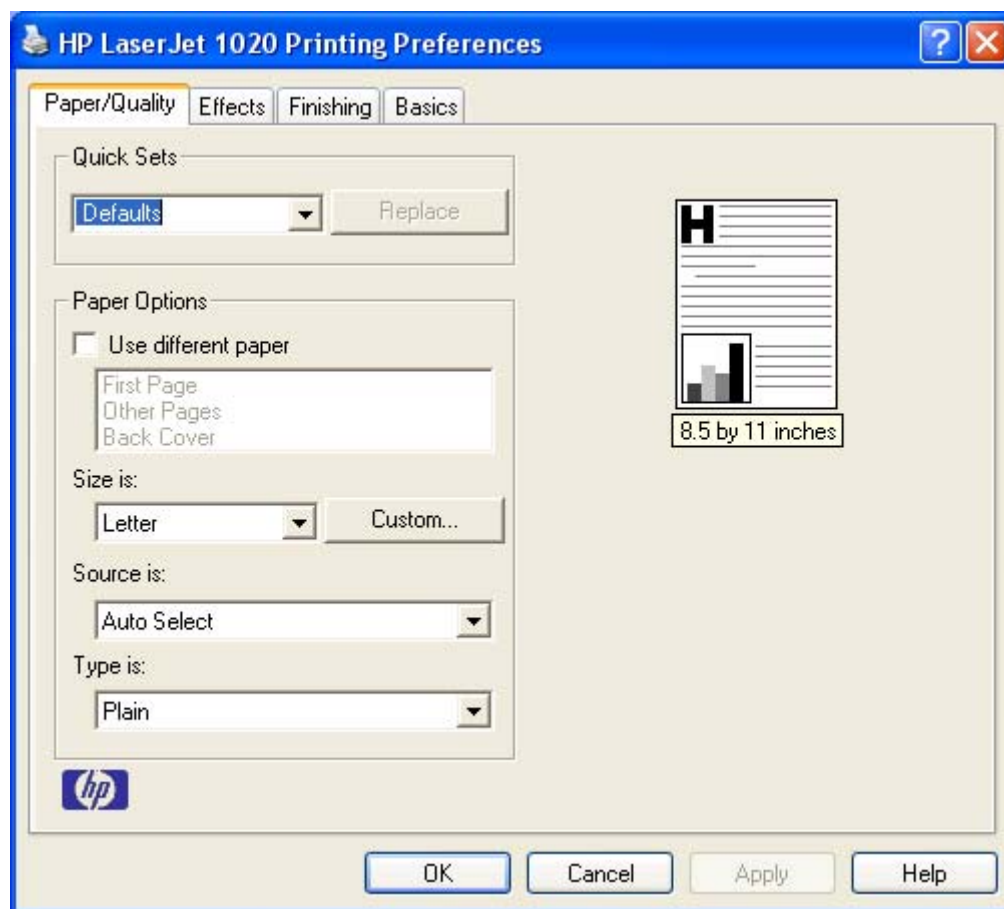


Figure 3-2 Paper/Quality tab

The **Paper/Quality** tab contains the following controls:

- **Quick Sets** group box
- **Paper Options** group box
- Document preview image

Quick Sets

The first group box in the upper portion of the **Paper/Quality** tab is **Quick Sets**. Any change to the **Quick Sets** group box that is made on the **Paper/Quality** tab affects all of the **Printing Preferences** driver tabs (the **Paper/Quality**, **Effects**, **Finishing**, and **Basics** tabs) because they are all the same control.

Use the **Quick Sets** setting to store the current combination of driver settings that are on all of the other print driver tabs. **Quick Sets** are either preset by using network-administrator settings or user-defined printing specifications (such as media size, pages per sheet, and so on).



NOTE Administrators can predefine Quick Sets for their users. These administrator Quick Sets are defined on the server and are available to users, but usually cannot be modified by users. Users can also define Quick Sets for their own use. User-defined Quick Sets are described later in this section.

The following selections are available in the **Quick Sets** drop-down menu:

- **Defaults**
- **Type new Quick Set name here**

Default Print Settings

When you select **Defaults**, nearly all of the settings are restored to the combination that existed after the driver was installed (the original settings). However, if the attribute combinations that are associated with watermark definitions or custom media sizes quick sets have been changed or deleted, the original settings are not restored.

Defaults appears in the **Quick Sets** menu automatically if no other driver settings have been changed since the driver was installed, or if all of the driver settings match the original settings. Otherwise, the setting in the **Quick Sets** menu is the same label that appeared when you last closed the printing **Properties** dialog box by clicking **OK**.

Type new Quick Set name here

By default, the **Quick Sets** menu is set to **Defaults**. When you change any of the default settings on any of the **Printing Preferences** driver tabs and you want to save the configuration as a Quick Set, highlight the words **Untitled**, type the name that you want for your new Quick Set, and then click **Save**. Quick Sets are saved in the system registry. To delete a Quick Set, select it from the drop-down menu and then click **Delete**.



NOTE Administrators can predefine Quick Sets for their users. These administrator Quick Sets are defined on the server and are available to users, but usually cannot be modified by users. Users can also define Quick Sets for their own use. User-defined Quick Sets are described later in this section.

You can store a maximum of 25 Quick Sets on a particular system. If you attempt to save too many, a message box appears that reads, "There are too many Quick Sets defined. Please delete some before adding new ones."

Paper Options group box

The settings specified in the **Paper Options** group box on the **Paper/Quality** tab apply to all of the pages of the document. The following illustration shows the **Paper Options** group box and the selections available by default.

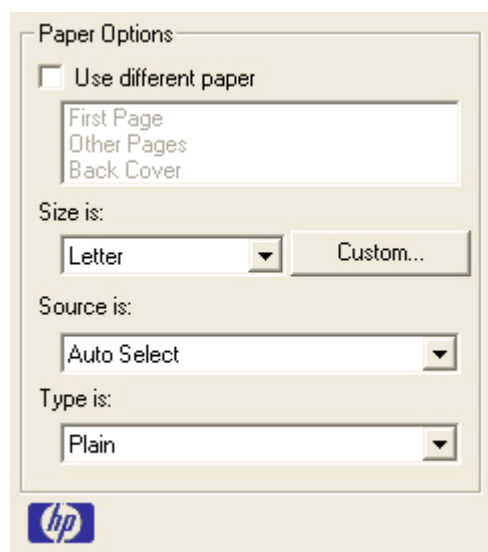


Figure 3-3 Paper Options group box

The appearance of the **Paper Options** group box changes when the **Use different paper** check box is selected. The settings in the **Paper Options** group box are described below in the following order:

- [Size is:](#)
- [Custom](#)
- [Source Is: drop-down menu](#)
- [Type is: drop-down menu](#)
- [Use different paper options](#)

Size is:

The **Size is:** setting is a drop-down menu that lists all of the supported media sizes.

You can specify a size for all the settings in the **Paper Options** group box. You must use the same media size for the entire print job. That is, if the print job uses Letter-size media, any option that you select from the available **Use different paper** options must also use Letter-size media.



NOTE Certain software programs can override the size command and specify different media sizes within a single document.

For the **Other Pages** and **Back Cover** settings, you can select a source (tray) and media type that differ from the settings selected for **First Page**. If a conflict exists among media source, media size,

and/or media type, and you choose to keep the conflicting settings, the settings are processed in the following order: media size, media type, and then media source.

Because driver settings are overridden by media-size settings in most software programs, it is generally best to use the driver to set media size only for software programs that lack a media-size setting, such as NotePad, or when you are producing a book or a booklet that does not require different media sizes.



NOTE When you use a software program that has a media-size setting, you can specify different media sizes within a single document by using the **Use different paper** options. For more information, see [Use different paper options](#).

Custom

The **Custom Paper Size** dialog box appears when you click the **Custom** button on the **Paper/Quality** tab. The following illustration shows the initial appearance of the **Custom Paper Size** dialog box.



NOTE The **Custom** button is not available when **Use different paper** is selected *and* any setting other than **First Page** is also selected.

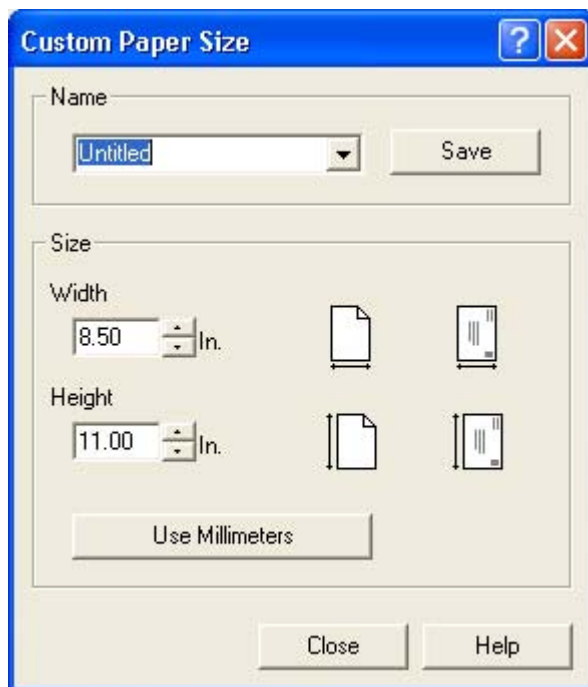


Figure 3-4 Custom Paper Size dialog box

When the **Custom Paper Size** dialog box appears, the drop-down menu in the **Name** group contains one of two things, depending on the current media-size selection on the **Paper/Quality** tab:

- If the media-size selection is a previously defined custom size, then the drop-down menu contains the name of that custom size.
- If the media-size selection is a standard media size, then the drop-down menu shows the default name **Untitled** for a custom media size.



NOTE In Windows 98 SE and Windows Me, two names for the same size media can coexist (for example, "big" and "BIG" can both be used as names for custom-size media measuring 8.4 inches x 11 inches). In Windows NT 4.0, Windows 2000, and Windows XP, both uppercase and lowercase names can be used, but they cannot be used to name the same media size.

The new name is compared only against the list of user-defined custom media-size names, and not against the standard media-size names.

The complete set of titles for this button and the specific characteristics that determine its title and capabilities are discussed in the [Save, Delete, or Rename](#) section.

Name

The **Name** drop-down menu shows the name of the custom media size that was selected most recently. Use the **Name** drop-down menu to select from the list of currently defined custom media sizes, or to type a new name for a custom media size.

The name that appears in the **Name** drop-down menu is one of three things, depending on the following conditions:

- If a saved custom media size has been selected from the drop-down menu and the other controls in the dialog box have not been changed since then, the **Name** drop-down menu shows the name of the last selected custom media size.
- If the width or height controls have been changed since a custom size was selected or saved, or if a saved media size has just been deleted, then the **Name** drop-down menu shows the default name of **Untitled**.
- If a new name has been typed into the **Name** drop-down menu for the purpose of saving a new size or renaming an existing size, then that new name will remain in the drop-down menu until a saved custom media size has been selected from the drop-down menu.

If you type a new name into the **Name** drop-down menu, but then do not click the **Save** button, you should be able to change the width and height values without losing the name. However, if a saved media-size name is selected from the drop-down menu, any unsaved name or size values are lost without warning, and replaced by the values of the selected custom media size.

Save, Delete, or Rename

The dynamic command button located next to the **Name** drop-down menu has three possible labels: **Save**, **Delete**, or **Rename**.

- **Save** is the button title whenever the height and width values have been changed since the most recent save action or since the selection of an existing custom media size. Clicking the button causes the name in the **Name** drop-down menu to be compared against each of the saved names. If a duplicate is found, a dialog box appears, asking if it is okay to replace the existing item. If you click **Yes**, the old item is updated with the new values. If you click **No**, the driver returns to the **Custom Paper Size** dialog box, where you can type a different name. The new name is compared only against the list of user-defined custom media names, and not against the standard media-size names. Whenever the command button has the **Save** title, it is the default button.
- **Delete** is the button title whenever the name of an existing (previously saved) custom media size appears in the **Name** drop-down menu, such as immediately after selecting an item from the drop-down menu or clicking the **Save** button. Clicking the **Delete** button causes the saved custom media size to be deleted, after which the **Name** drop-down menu changes to **Untitled**, the height and width controls are unchanged, and the button title changes to **Save**.
- **Rename** is the button title when you type something into the **Name** drop-down menu after selecting an existing custom media size from the drop-down menu. If no duplicate is found, then the name of the stored custom media size changes to match the contents of the **Name** drop-down menu.

The following table illustrates the relationships between the **Name** drop-down menu, the command button, and the actions that take users from one state to another.

Table 3-1 Name drop-down menu text strings

State	Drop-down menu contents	Button label	Action	Next state
1	Untitled	Save	Click Save .	3
			Type something into the Name drop-down menu.	2
			Change the width or height values.	1
			Select a saved item from the drop-down menu.	3
2	<user-typed text>	Save	Click Save .	3
			Type something into the Name drop-down menu.	2
			Change the width or height values.	2
			Select a saved item from the drop-down menu.	3
3	<name of saved item>	Delete	Click Delete .	1
			Type something into the Name drop-down menu.	4
			Change the width or height values.	1
			Select a saved item from the drop-down menu.	3
4	<user-typed text>	Rename	Click Rename (when the name is unique).	3
			Click Rename (when the name is a duplicate).	4
			Type something into the Name drop-down menu.	4

Table 3-1 Name drop-down menu text strings (continued)

State	Drop-down menu contents	Button label	Action	Next state
			Change the width or height values.	2
			Select a saved item from the drop-down menu.	3

Paper Size (width and height controls)

The width and height values can be changed either by typing numeric strings into the edit boxes, or by using the up and down arrows.

Any entry that is greater than the maximum limits of the width and height control is rounded down to the maximum valid entry, while any entry that is smaller than the minimum limits of the width and height control is rounded up to the minimum valid entry.

If units are in millimeters, the custom media-size range minimum is the limit rounded up to the nearest whole millimeter. The custom media-size range maximum is the limit rounded down to the nearest whole millimeter. Any non-numerical entry reverts to the last valid entry. Width and height entries are validated when the focus has changed.

The resolution of each control is one millimeter or one-tenth of an inch, depending on the current measurement units. Clicking the up and down arrows increases or decreases the current value by the increment amount (within the allowed range of values). The computer determines the rate at which the values change.

Unit indicator labels change dynamically to indicate inches or millimeters, depending on the measurement units the driver is currently using. To change measurement units, click the dynamic Measurement Units button (either **Use Inches** or **Use Millimeters**).

Custom width and height control limits

The minimum media size for the HP LaserJet 1020 is 76.2 x 127 mm (3 x 5 inches) and the maximum is 216 x 356 mm (8.5 x 14 inches). The following table summarizes media size limits for each media-handling device.

Table 3-2 Host-based custom media sizes

Tray	Dimensions	Minimum	Maximum
Tray 1 (10-sheet priority input slot)	Width	76.2 mm (3 inches)	216 mm (8.5 inches)
	Height	127 mm (5 inches)	356 mm (14 inches)
Tray 2 (250-sheet)	Width	148 mm (5.83 inches)	216 mm (8.5 inches)
	Height	210 mm (8.27 inches)	356 mm (14 inches)

Units

Select the **Inches** or **Millimeters** button to show the unit of measurement in either standard (inches) or metric (millimeters).

OK

The **OK** button closes the **Custom Paper Size** dialog box according to the logic in the following table. In all cases, any custom media sizes that are successfully saved (and not renamed or deleted)

while the dialog box is open will remain in the **Size is:** drop-down menu on the **Paper/Quality** tab. The following table lists options that appear when you click the **OK** button.

Table 3-3 OK dialog box text strings

If the drop-down menu contains	And the button says	Then this happens when you click the OK button
Custom	Save	The dialog box closes, but you lose the changes that were not saved. The current media size remains the same as it was when the Custom button was selected.
<user-typed text>	Save	The dialog box closes, but you lose the changes that were not saved. The current media size remains the same as it was when the Custom button was selected.
<name of saved item>	Delete	The dialog box closes, and the current media size is set to that which was last shown in the drop-down menu.
<user-typed text>	Rename	The dialog box closes, but you lose the changes that were not saved. The current media size remains the same as it was when the Custom button was selected.

Use different paper check box

When the **Use different paper** check box is selected and different options are configured, the **Size is:**, **Source is:**, and **Type is:** menus change, offering a variety of options. For more information, see [Use different paper check box](#).

Source is: drop-down menu

The **Source is:** setting specifies the source tray to use for printing a document. The list of source trays depends on the printer accessories. Any optional source trays that are installed through the **Device Settings** tab also appear here.

The **Source is:** drop-down menu can contain the following options:

- **Auto Select**
- **Manual Feed**

The default setting is **Auto Select**. When this setting is selected, the product uses the source tray that supports the media size that you have selected. If you select a source tray other than **Auto Select**, make sure that the correct media size is loaded in the source tray.

Type is: drop-down menu

The **Type is:** drop-down menu shows all of the media types that the product supports.

The following standard media types appear in the list.

Table 3-4 Standard media types

Media type
Bond Paper
Cardstock (106 to 163 g/m ² or 28 to 43 lb.)
Color
Envelope
Heavy (90 to 105 g/m ² or 24 to 28 lb.)
Labels
Letterhead
Light (< 75 g/m ²)
Plain
Preprinted
Prepunched
Recycled
Rough Paper
Transparency
Vellum

The default setting is **Unspecified**, and the program selects the media type. If you select a different setting, make sure that the correct media type is loaded in the tray you selected in the **Source is:** setting.

Use different paper options

You can print books that include different types of print media by using the **Use different paper** options.

When you select the **Use different paper** check box, the following settings can appear in the group box, along with associated options:

- **First Page**
- **Other Pages**
- **Back Cover**

To use **Use different paper** options, you must configure the setting for the print job. Each option for the **Use different paper** setting is described in the sections that follow this procedure. Use the procedure to configure the setting.

To configure the Use different paper options for a print job

For each option, you can set a different tray in the **Source Is:** drop-down menu. For some options, the **Type is:** drop-down menu is also available.

- 1 To use different media or cover stock, select the **Use different paper** check box. A list of options appears in the dialog box. The full set of selections is visible when you scroll by using the down arrow button to the right of the list.
- 2 To use different media for the pages within the print job, select the appropriate option (**First Page**, **Other Pages**, or **Back Cover**) in the dialog box.
- 3 Click **OK** to print.



NOTE You must use the same size of media for the entire print job. All options that you select from the available **Use different paper** options use the size selected in the **First Page** settings.

When you change the type and source of the media and covers, the settings you select remain configured until you close the software program.

Each option for the **Use different paper** setting is described in the following sections, in the order they appear in the pane below the **Use different paper** check box.

Back Cover options

The following illustration shows the **Back Cover** setting and options that you use to include a blank or preprinted back cover on a document.

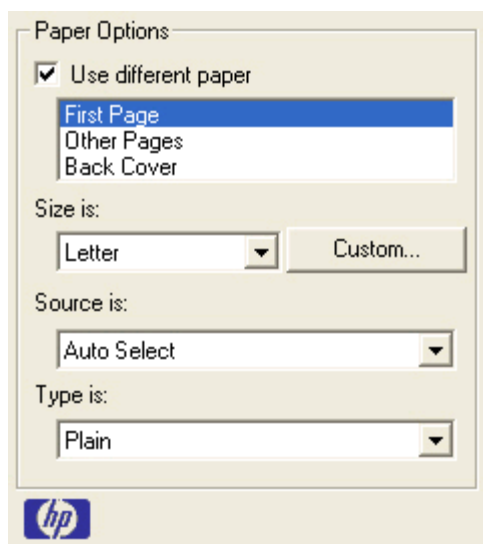


Figure 3-5 Back Cover setting

The **Back Cover** options are as follows:

- **Source is:** drop-down menu
- **Type is:** drop-down menu



NOTE The **Back Cover** options are not available when the **Booklet Layout** setting is enabled on the **Finishing** tab. For two-page-per-sheet (2-up) booklet printing, you can include a cover by selecting different media for the first page only. The back cover setting is unavailable, because this page would be printed in the middle of a booklet.

The **Source is:** setting specifies the source tray to use for adding a back cover to the document. The list of source trays depends on the product accessories. Any optional trays that are installed through the **Configure** tab also appear here. For more information about the **Source is:** setting, see the [Source Is: drop-down menu](#) section of this chapter.

The **Type is:** drop-down menu shows all of the media types that the product supports. For more information about the **Type is:** drop-down menu settings, see the **Type is:** in the [Type is: drop-down menu](#) section of this chapter.

First Page and Other Pages options

Use these options to select an alternative media size, type, or source for the first page or other pages of a document. The following illustration shows the appearance of the **Paper Options** group box when you select the **Use different paper** check box.

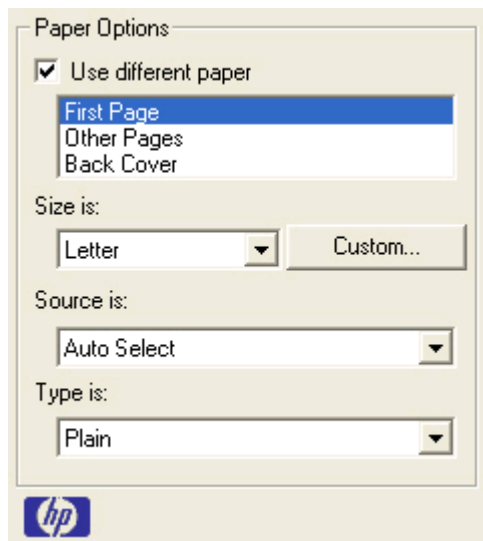


Figure 3-6 First Page and Other Page options

The **First Page**, and **Other Pages** options are as follows:

- **Size is:** drop-down menu
- **Source is:** drop-down menu
- **Type is:** drop-down menu

The **Size is:** driver setting for the first page applies to the entire print job. When this is set for the **First Page** option, the setting becomes unavailable for all the other **Use different paper** options.

The **Source is:** setting specifies the source tray to use for printing a document. The list of source trays depends on the product accessories. Any optional source trays that are installed through the **Device Settings** tab also appear here.

The **Type is:** drop-down menu shows all of the media types that the product supports.

Document preview image

The document preview image is a line-drawn image of a page that represents graphics and text. The document preview image is always oriented so that the contents of the page are right-side up. The document preview image appears in the upper-right corner of the **Paper/Quality**, **Effects**, **Finishing**, and **Basics** tabs.

Switching between tabs does not change the location or appearance of the document preview image. When you move the mouse over the document preview image, the mouse cursor changes from an arrow to a gloved hand. You can toggle between portrait and landscape page orientation by clicking on the image.

Effects tab features

Use the **Effects** tab to create unique media effects such as scaling and watermarks. The following illustration shows the **Effects** tab.

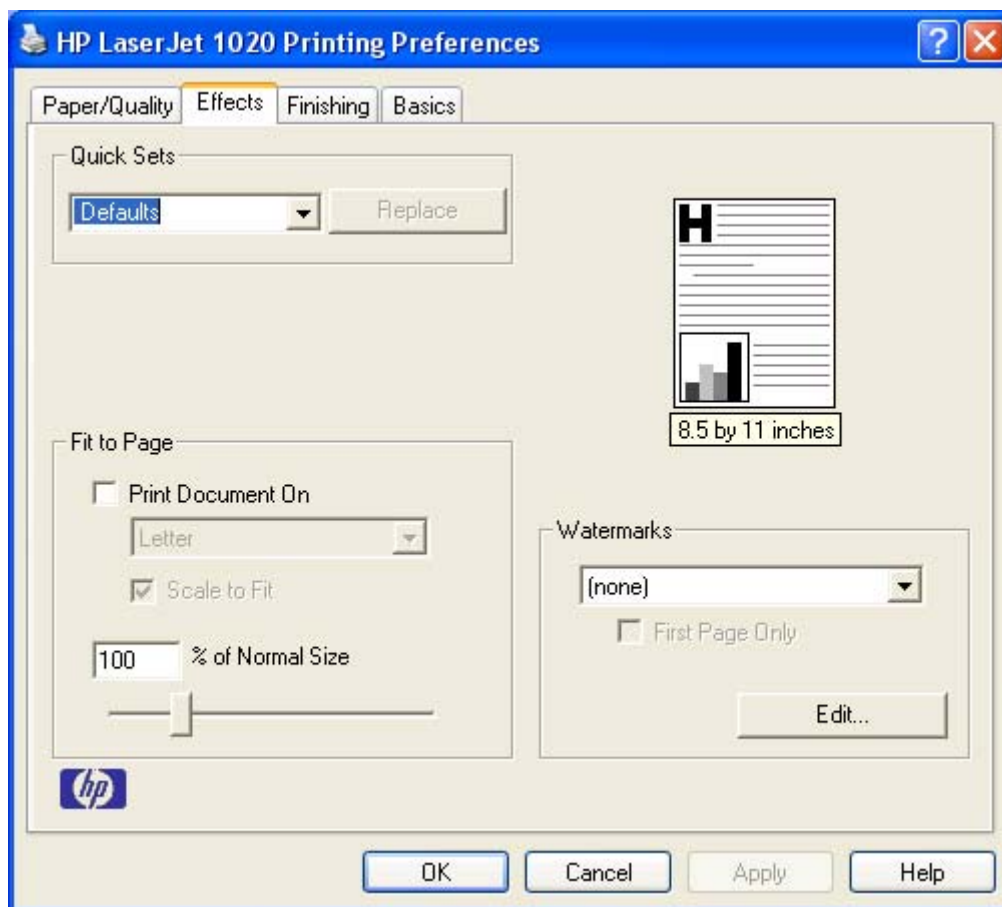


Figure 3-7 Effects tab

The **Effects** tab contains the following controls:

- **Quick Sets** group box
- **Fit to Page** group box
- Document preview image

- **Watermarks** group box

Quick Sets

Use the **Quick Sets** control to store the current combination of driver settings that are found on all of the other **Printing Preferences** driver tabs. Quick sets are either preset or user-defined printing specifications, such as media size and pages per sheet. For more information, see [Quick Sets](#) in the **Paper/Quality** tab section of this guide.

Fit to Page options group box

The **Fit to Page** group box consists of the following controls:

- **Print Document On** setting
- **Scale to Fit** option
- **% of Normal Size** setting

Print Document On setting

Select the **Print Document On** option button to format the document for one media size and then print the document on a different media size, with or without scaling the image to fit the new media size.

The **Print Document On** control is disabled by either of the following conditions:

- The **% of Normal Size** value is not 100.
- The **Pages per Sheet** value (on the **Finishing** tab) is not 1.

When **Print Document On** is selected, the drop-down menu shows the media sizes on which you can print. The list contains all of the standard media sizes that the selected media source supports and any custom media sizes that you have created. When **Print Document On** is selected, **Scale to Fit** is automatically selected.

Scale to Fit option

The **Scale to Fit** option box specifies whether each formatted document page image is scaled to fit the target media size. By default, **Scale to Fit** is selected when **Print Document On** is selected. If the setting is turned off, then the document page images will not be scaled, and are instead centered at full size on the target media. If the document size is larger than the target media size, then the document image is clipped. If it is smaller, then it is centered within the target media. The following illustration shows preview images for a document that has been formatted for legal-size media with the **Print Document On** check box selected, and the target size specified as **Letter**.

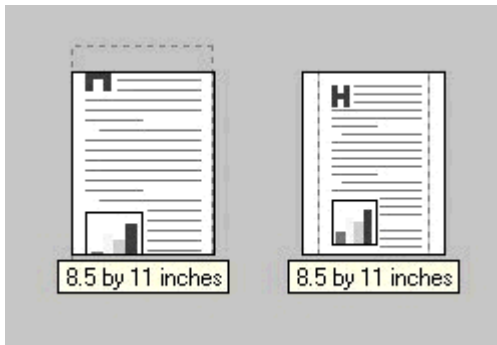


Figure 3-8 Preview images - Legal on Letter; Scale to Fit off (left) and on (right)

When the size for which the document is formatted (that is, the logical size) differs from the target size, the preview image uses a dashed gray line to show the boundaries of the logical page in relation to the target page size.

% of Normal Size option

The **% of Normal Size** option provides a slider bar to use for scaling the percentage setting. The default setting in the entry box is 100 percent of normal size. Normal size is defined as the media size that is selected within the driver or what the driver receives from the software program (if the software program does not negotiate the media size with the driver). The driver scales the page by the appropriate factor and sends it to the product.

The limits of the range are from 25 percent to 400 percent, and any values outside of the range are adjusted to those limits as soon as the focus is removed from the control (that is, when the **Tab** key is pressed or another control is selected).

Any change to the scale also changes the page preview, which increases or decreases from the upper-left corner of the preview.

The slider bar controls the scale directly. The value in the edit box changes as the scroll bar indicator is dragged, and the preview image is updated to the new image scale. Each click on the scroll bar arrows increases or decreases the scale by one percent. Each click on the slider bar affects the scale by 10 percent.

You cannot achieve an exact value by dragging the scroll bar indicator at the default Windows resolution. Use the scroll bar indicator to approximate the value that you want, and then use the scroll bar arrows to refine the value.

The following settings disable **% of Normal Size**:

- **Print Document On** (on the **Effects** tab) is selected
- **Pages per Sheet** (on the **Finishing** tab) is not 1

Document preview image

The document preview image is a line-drawn image of a page that represents graphics and text. The document preview image is always oriented so that the contents of the page are right-side up. The document preview image appears in the upper-right corner of the **Finishing**, **Effects**, and **Paper/Quality** tabs.

Switching between tabs does not change the location or appearance of the document preview image. When you move the mouse over the document preview image, the mouse cursor changes

from an arrow to a gloved hand. You can toggle between portrait and landscape page orientation by clicking the document preview image.

Watermarks group box

Use the **Watermarks** feature to choose a watermark, create your own custom watermarks (text only), or edit an existing watermark. The following watermarks are preset in the driver:

- **(none)**
- **Confidential**
- **Draft**
- **SAMPLE**

The drop-down menu shows alphabetically sorted watermarks that are currently available on the system, plus the string "(none)", which indicates that no watermark is selected. This is the default setting. Any watermark selected from this list appears in the preview image.

When the **First Page Only** check box is selected, the watermark is printed only on the first page of the document. The **First Page Only** check box is disabled when the current watermark selection is **(none)**.

Watermarks are applied to logical pages. For example, when **Pages per Sheet** is set to **4** and **First Page Only** is turned off, four watermarks appear on the physical page (one on each logical page).

Click **Edit**, and the **Watermark Details** dialog box appears.

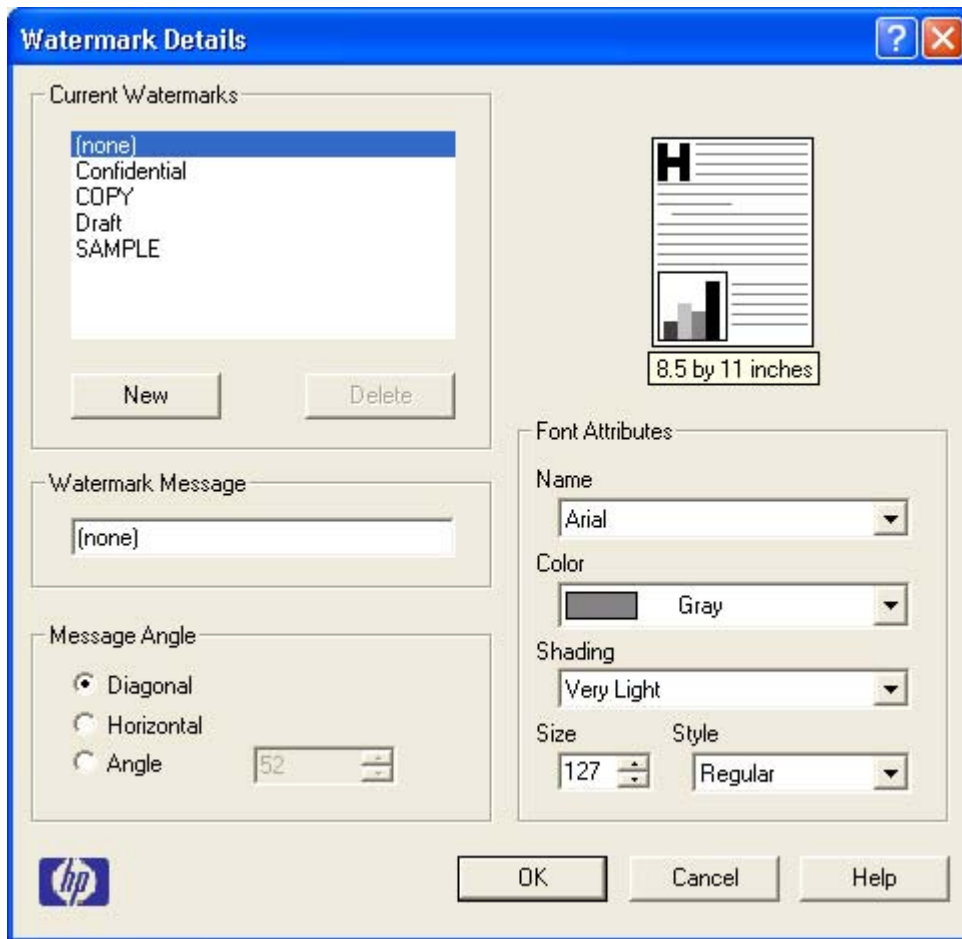


Figure 3-9 Watermark Details

The dialog box shows a preview image and provides options for creating a new watermark and controlling the message angle and font attributes.

Click **OK** to accept all of the changes that are made in the **Watermark Details** dialog box. However, clicking **Cancel** does not cancel all of the changes. If you make changes to a watermark, and then select a different watermark or click **New**, all of the changes that you made to the previous watermark are saved, and only the current, unsaved changes can be canceled.

Current Watermarks

The **Current Watermarks** group box contains a list of available watermarks, both predefined watermarks made available in the driver and any new watermarks that you have created.

To create a new watermark, click **New**. The new watermark appears in the **Current Watermarks** list and in the **Watermark Message** edit box as **Untitled** until you name it. The name that you type in the **Watermark Message** field appears in the **Current Watermarks** group box in the **Watermark Details** dialog box and in the **Watermarks** group box on the **Effects** tab.

To name the new watermark, type the selected watermark text in the **Watermark Message** edit box. To delete a watermark, select the watermark in the **Current Watermarks** list and click **Delete**. A warning appears asking whether you are sure you want to delete the selected item. Click **Cancel** if you want to keep the watermark. Click **OK** to delete the selected watermark.



NOTE You can have no more than 30 watermarks in the **Current Watermarks** list at one time. When the limit of 30 watermarks is reached, the **New** button is disabled, and a Bubble Help appears that explains why the button is disabled and how to enable it.

To edit an existing watermark, select the watermark in the **Current Watermarks** list. If you change the **Watermark Message** for that watermark, you are, in effect, creating a new watermark.

Watermark Message

The **Watermark Message** is also the name that identifies the watermark in the **Current Watermarks** list, except when more than one watermark has the same message. For example, you might want several different watermarks with the message DRAFT, each with a different typeface or font size. When this occurs, the string is appended with a space, a pound sign, and a number (for example, **Draft #2**). When a number is added, the number two is used first, but if the resulting name is also in the list, then the number increases until the name is unique (**Draft #3**, **Draft #4**, and so on).

Message Angle

Use the controls in the **Message Angle** group box to print the watermark in different orientations in relation to the text. The settings are **Diagonal**, **Horizontal**, or **Angle** (custom). The default is **Diagonal**. All three settings automatically center the watermark string within the page; the selection of a particular setting affects only the angle of the string placement. **Diagonal** places the text along a line that spans the lower-left to upper-right corners of the page. **Horizontal** places the text along a line that spans the mid-left and mid-right edges of the page. **Angle** places the text at the specified angle across the page.

Font Attribute

Use the controls in the **Font Attributes** group box to change the font and the shading, size, and style of the font.

The **Font Attributes** group box contains the following controls:

- **Name** drop-down menu
- **Color** drop-down menu
- **Shading** drop-down menu
- **Size** spin box
- **Style** drop-down menu

Name

The **Name** drop-down menu lists fonts that are currently installed on the system. The default is language-dependent.

Color

The default **Gray** setting is the only setting available from the **Color** drop-down menu.

Shading

The default **Shading** setting for new and preset watermarks is **Very Light**. The following range of shades is available from the **Shading** drop-down menu.

- **Lightest**
- **Very Light** (default)
- **Light**
- **Medium Light**
- **Medium**
- **Medium Dark**
- **Dark**
- **Very Dark**
- **Darkest**

These values represent the intensity of the gray that is used. A choice of **Light** produces a lightly saturated gray watermark. A choice of **Lightest** produces the lightest shade of watermark; **Darkest** produces a black watermark.

Size

Font sizes from 1 to 999 points are available from the **Size** menu. The default point size is language-dependent. The choice of **Regular**, **Bold**, **Italic**, and **Bold Italic** is available from the **Style** drop-down menu.

Style

The choice of **Regular**, **Bold**, **Italic**, and **Bold Italic** is available from the **Style** drop-down menu. The default **Style** setting for new and preset watermarks is **Regular**.

Default settings

The default settings for new watermarks are **Arial** font, **Gray** color, **Very Light** shading, **80** points, and **Regular** style. The default settings for preset watermarks are **Arial** font, **Very Light** shading, and **Bold** style. The default point size for preset watermarks is language-dependent, and varies.

Finishing tab features

Use the **Finishing** tab to print booklets and control the media output. The following illustration shows the **Finishing** tab.

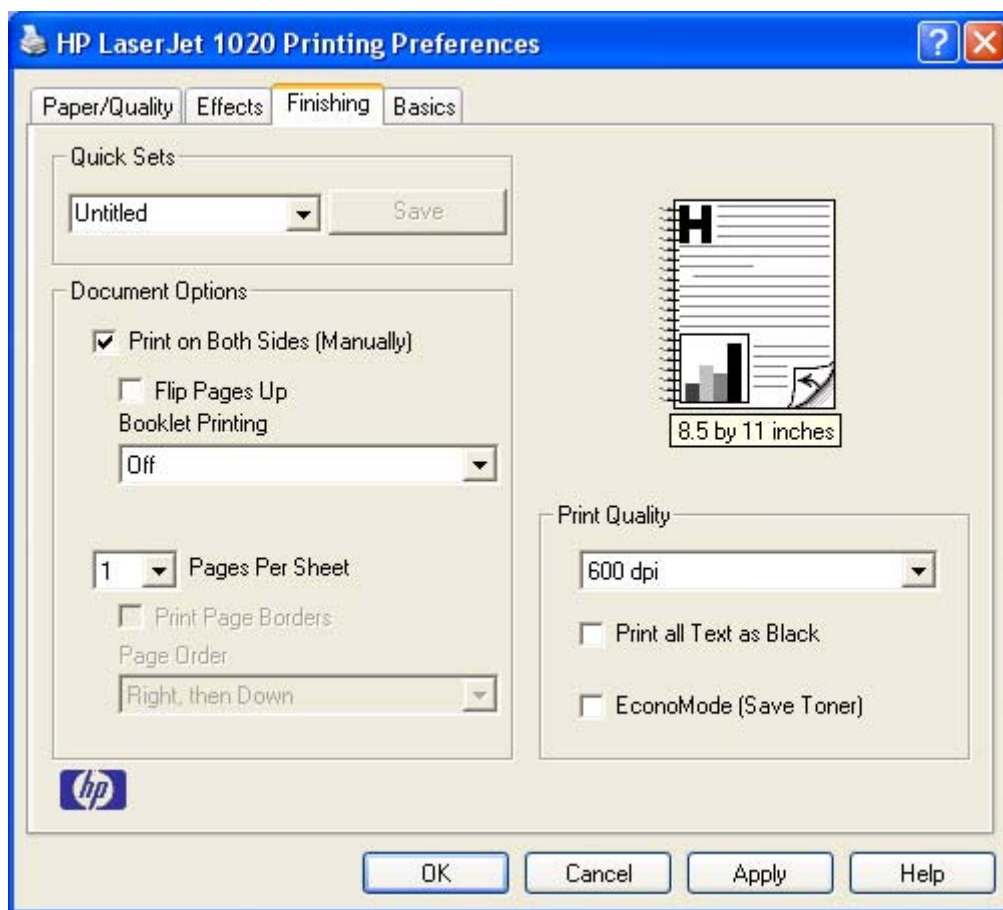


Figure 3-10 Finishing tab

The **Finishing** tab contains the following controls:

- **Quick Sets** group box
- **Document Options** group box
- Document preview image
- **Print Quality** group box

Quick Sets

Use the **Quick Sets** control to store the current combination of driver settings that are found on all other **Printing Preferences** driver tabs. Quick sets are either preset or user-defined printing specifications, such as media size and pages per sheet. For more information, see [Quick Sets](#) in the **Paper/Quality** tab section of this guide.

Document Options

The **Document Options** group box contains the following controls:

- **Print on Both Sides (Manually)** check box
- **Flip Pages Up** option

- **Booklet Printing** drop-down menu
- **Pages per Sheet** drop-down menu
- **Print Page Borders** check box
- **Page Order** drop-down menu

Print on Both Sides (Manually) option

The default setting for the **Print on Both Sides (Manually)** option is off (not selected). Selecting **Print on Both Sides (Manually)** makes the **Flip Pages Up** and **Booklet Printing** options available.

Manually printing on both sides

Follow these steps to manually print on both sides:

- 1 Print all of the even-numbered pages in your document. Some software programs have a selection in the **Print** dialog box that you can use to specify printing even- or odd-numbered pages.
- 2 Follow the instruction on the **Print on Both Sides Instructions** dialog box.

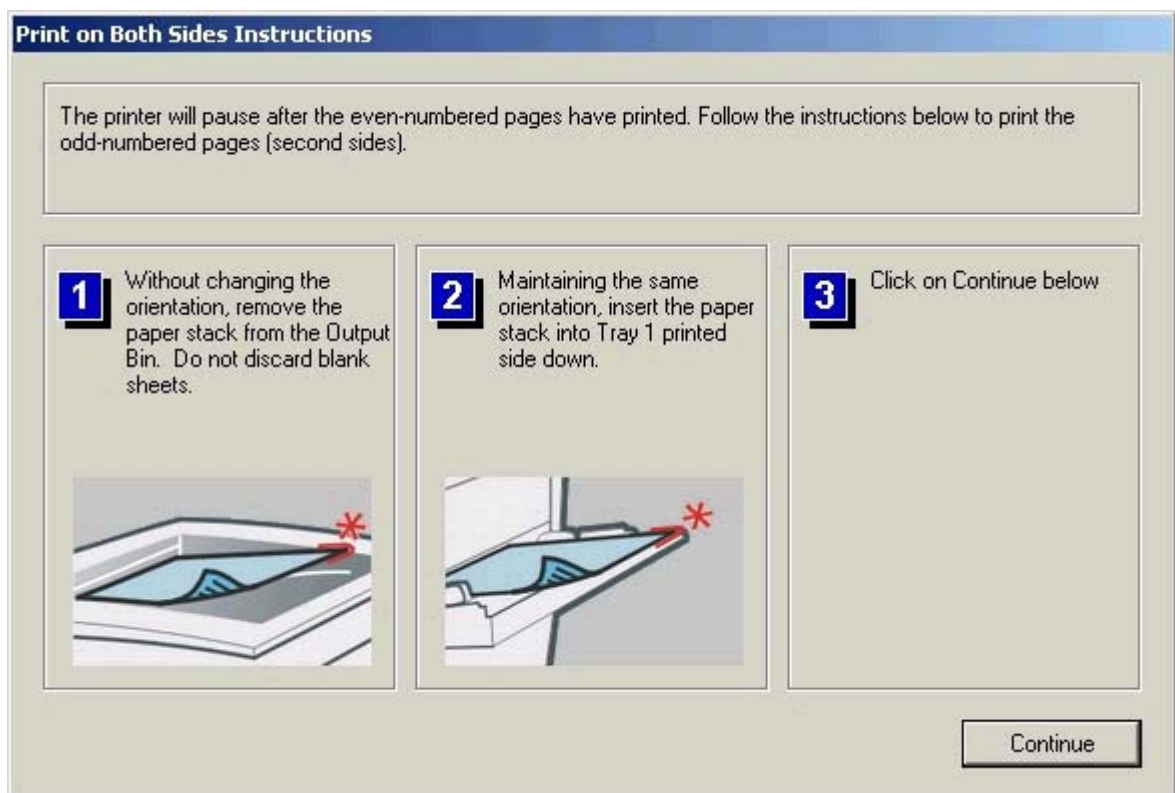


Figure 3-11 Print on Both Sides Instructions

Flip Pages Up

The **Flip Pages Up** check box, which is available only when **Print on Both Sides** is selected, is used to specify the duplex-binding option. By default, the **Flip Pages Up** check box is not selected.

The following table demonstrates the results of selecting this box, depending on the media orientation that you selected on the **Finishing** tab.

Table 3-5 Page orientation

Orientation (Finishing tab)	Flip Pages Up selected	Flip Pages Up not selected
Portrait	Short-edge binding	Long-edge binding
Landscape	Long-edge binding	Short-edge binding

When **Print on Both Sides (Manually)** is selected, the document preview image changes to show a spiral binding along either the left edge or the top edge of the page. In addition, a folded-over corner appears in the lower-right portion of the preview image, indicating that printing occurs on the back side. An arrow on the folded-over corner points in the direction that the pages would be flipped if they were bound together.

Short-side binding is for print jobs with pages that read by flipping over like the pages of a note pad. Long-side binding is for print jobs with pages that read by turning like the pages of a book.

Booklet layout

The **Booklet Layout** drop-down menu, visible when **Print on Both Sides** is selected, offers choices that are based on the current media size. The default setting for the **Booklet Printing** drop-down menu is **Off**.

- **Left Edge Binding**
- **Right Edge Binding**

When you select **Left Edge Binding** or **Right Edge Binding**, the document preview image changes to show the location of the binding. If the **Pages per Sheet** setting is on the default setting of 1, it automatically changes to **2 pages per sheet**. If you change the **Pages per Sheet** setting manually to 4, 6, 9, or 16 pages per sheet, the booklet setting is disabled. See the [Printing a Booklet](#) section of this chapter for more information.

The **Booklet Layout** setting is disabled when A6 or B6 (JIS) is selected as the media size, and an incompatibility error message appears when you click **OK** to close the driver.

Book and Booklet printing

The HP LaserJet 1020 supports book and booklet printing.

A book is a print job consisting of at least two pages that can have a different media type for the first page, other pages, or back cover. Use the **First Page**, **Other Pages**, and **Back Cover** settings on the **Paper/Quality** tab (available when you select the **Use different paper** check box) to select different media for these pages.

A booklet is a print job that places two pages on each side of a sheet that can be folded into a booklet that is half the size of the media type. Use the **Booklet Layout** drop-down menu on the **Finishing** tab to control booklet settings.

Printing a Booklet

Complete the following steps to print a booklet.

- 1 Click **File**, click **Print**, and then click **Properties**.
- 2 Click the **Finishing** tab and select the **Print on Both Sides (Manually)** check box.
- 3 In the **Booklet Layout** drop-down menu, select the type of booklet printing that you want (for example, **Right Edge Binding**).
- 4 Click **OK** in the print driver.
- 5 Click **OK** in the print dialog box to print.

Printing a Book

You can print a book in which the first page, other pages, and back cover have different media types. For more information, see the [Paper/Quality tab features](#) section of this chapter.

Pages per Sheet

Use the **Pages per Sheet** option to select the number of pages that you want to print on a single sheet of media. If you choose to print more than one page per sheet, the pages appear smaller and are arranged on the sheet in the order that they would otherwise be printed. The **Pages per Sheet** drop-down menu provides six settings:

- 1 page per sheet (default)
- 2 pages per sheet
- 4 pages per sheet
- 6 pages per sheet
- 9 pages per sheet
- 16 pages per sheet



NOTE When you select an option other than **2 pages per sheet**, booklet printing is unavailable.

Print Page Borders

Related controls indented beneath the **Pages per Sheet** edit box are **Print Page Borders** and **Page Order**, which become active when **Pages per Sheet** is greater than 1.

Print Page Borders sets a line around each page image on a printed sheet to help visually define the borders of each logical page.

Page Order

The **Page Order** drop-down menu contains four selections:

- **Right, then Down**
- **Down, then Right**

- **Left, then Down**
- **Down, then Left**

The preview document image changes to reflect alterations in these settings, as shown by the examples in the following illustration.

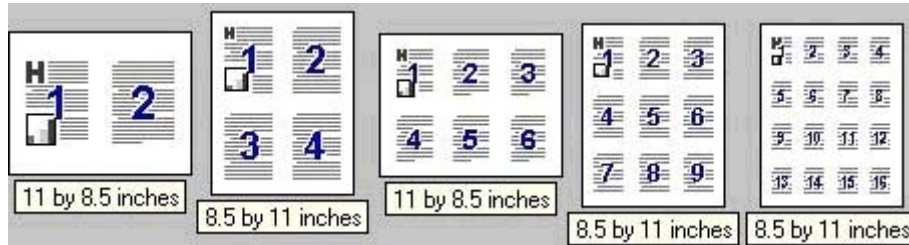


Figure 3-12 Page-order preview images

- **2 pages per sheet**
- **4 pages per sheet**
- **6 pages per sheet**
- **9 pages per sheet**
- **16 pages per sheet**

Document preview image

The document preview image is a line-drawn image of a page that represents graphics and text. The document preview image is always oriented so that the contents of the page are right-side-up. The document preview image appears in the upper-right corner of the **Paper/Quality**, **Effects**, **Finishing**, and **Basics** tabs.

Switching between tabs does not change the location or appearance of the document preview image. When you move the mouse over the document preview image, the mouse cursor changes from an arrow to a gloved hand. You can toggle between portrait and landscape page orientation by clicking the document preview image.

Print Quality

Print quality settings affect how light or dark the print is on the page and the style for printing graphics. You can also use the print quality settings to optimize the print quality for a specific media type.

The **Print Quality** group box contains the following controls:

- **Print Quality drop-down menu**
- **Print All Text as Black**
- **Economode**

Print Quality drop-down menu

You can change the setting to accommodate the type of job that you are printing. The following are the settings:

- **FastRes 1200** This setting uses FastRes 1200 to provide 600 x 600 x 2. This is the default setting.
- **600 dpi** This setting provides 600 x 600 dpi.

Print All Text as Black

The **Print All Text as Black** feature is **Disabled** by default. When **Enabled** is selected, the driver prints all text as black regardless of the original document text color. Color text is printed as black, except for white text, which remains white. White text is a reliable method of printing reverse typeface against a dark background. This setting does not affect graphic images on the page, nor does it affect any text that is part of a graphic.

Economode

EconoMode is a feature that allows the product to use less toner per page. Selecting this option will extend the life of the toner supply and will reduce cost per page. However, it will also reduce print quality. The printed image is lighter, but it is adequate for printing drafts or proofs.

HP does not recommend the full-time use of EconoMode. If EconoMode is used full-time when the average toner coverage is significantly less than 5 percent, it is possible that the toner supply will outlast the mechanical parts in the print cartridge. If print quality begins to degrade under these circumstances, you must install a new print cartridge, even if there is toner supply remaining in the cartridge.

Basics tab features

The **Basics** tab provides options for setting the number of copies to be printed and the orientation of the print job. You can also use the **Basics** tab to retrieve information about the driver. The following illustration shows the **Basics** tab.

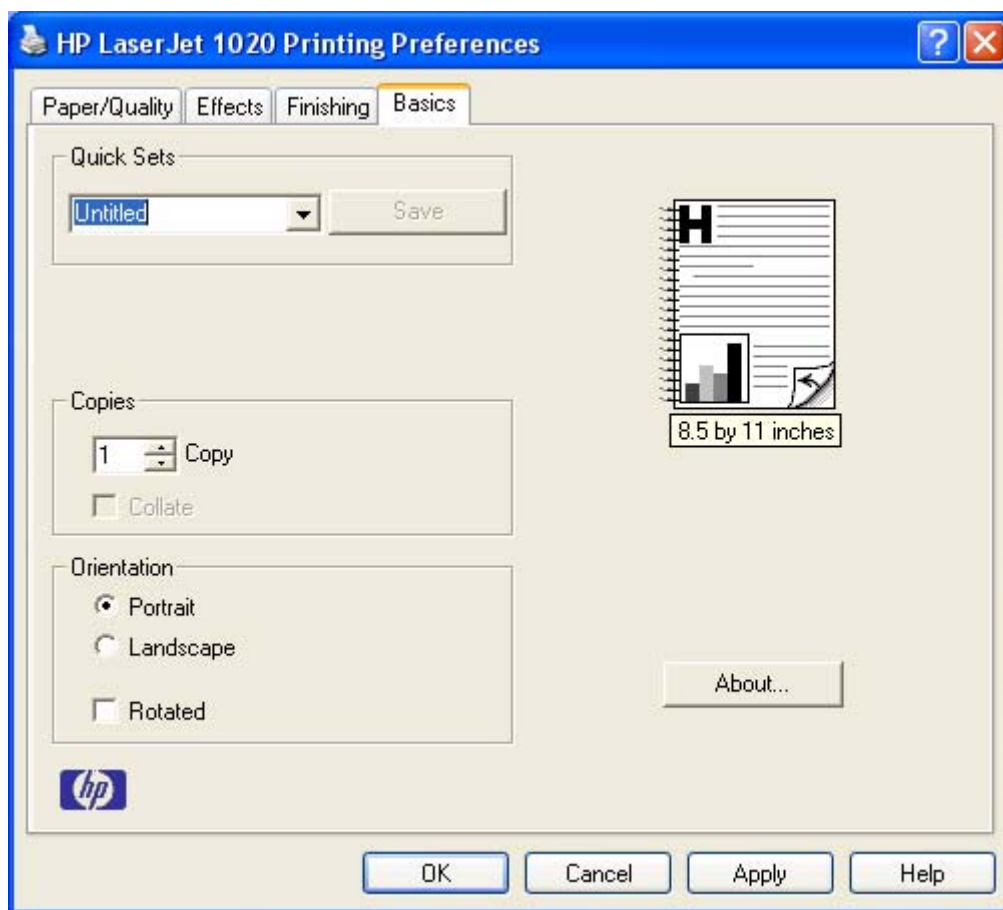


Figure 3-13 Basics tab

The **Basics** tab contains the following controls:

- **Quick Sets** group box
- **Copies** group box
- **Orientation** group box
- Document preview image
- **About** button

Quick Sets

Use the **Quick Sets** control to store the current combination of driver settings that are found on all of the other **Printing Preferences** driver tabs. Quick sets are either preset or user-defined printing specifications, such as media size and pages per sheet. For more information, see [Quick Sets](#) in the **Paper/Quality** tab section of this guide.

Copies group box

The **Copies** feature allows you to specify the number of copies to print.

The number of copies you request appears in the **Copies** box. You can select the number by typing in the box or by using the up and down arrows to the right of the edit box. Valid entries are numbers

from **1** to **999**. The copies value will not advance from the maximum number (999) to 1 when the up arrow is used, or change from 1 to the maximum number (999) when the down arrow is used. Invalid entries into the edit box (such as non-numerical input, numbers less than 1 or greater than the maximum allowed) are changed to the last valid value entered when you click on another group box or leave the **Basics** tab. The default number of copies is **1**.

Because you can set the number of copies that you want from some software programs, conflicts between the software program that you are using and the driver can arise. In most cases, the software program and the driver communicate, so that the number of copies set in one location (such as the program) will appear in the other (such as the driver). For some programs, this communication does not take place, and the copies values are treated independently. For these programs, setting 10 copies in the program and then setting 10 copies in the driver will result in 100 copies (10 x 10) being printed. It is recommended that you set the number of copies in the program wherever possible.

Orientation

Orientation refers to the layout of the image on the page, and does not affect the manner in which media is fed into the printer. You can specify the orientation of the print job.

Orientation can toggle between portrait and landscape by left-clicking the preview image. If you check **Rotate by 180 degrees**, there is no change in the preview image.

The **Orientation** group box contains the following options:

- **Portrait** option button
- **Landscape** option button
- **Rotated** check box

Portrait option button

Select this feature to print your document in **Portrait** orientation. This is the default setting.

Landscape option button

Select this feature to print your document in **Landscape** orientation.

Rotated check box

Select this feature to rotate the document image on the media 180 degrees. For example, if the return address on an envelope is smudged, try this setting and feed the envelope so that the return address area is fed first into the printer.

Document preview image

The document preview image is a line-drawn image of a page that represents graphics and text. The document preview image is always oriented so that the contents of the page are right-side up. The document preview image appears in the upper-right corner of the **Finishing**, **Effects**, and **Paper/Quality** tabs.

Switching between tabs does not change the location or appearance of the document preview image. When you move the mouse over the document preview image, the mouse cursor changes from an arrow to a gloved hand. You can toggle between portrait and landscape page orientation by clicking the document preview image.

About button

Click the **About** button on the **Basics** tab or select the HP logo on any of the driver property pages to open the **About** dialog box. To close the **About** box, click **OK**, press **ESC**, press **ALT + F4**, or press **ENTER**. The figure below shows the **About** box. The information varies according to HP LaserJet 1020 model number, driver, date, and versions.

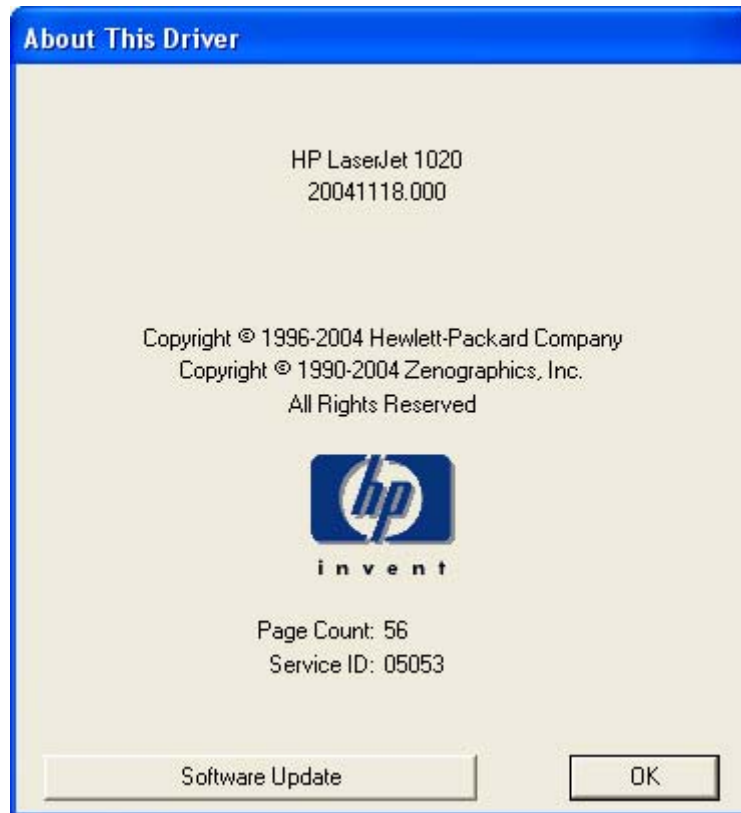


Figure 3-14 About This Driver dialog box

Printer Properties tab set

The printer **Properties** tab set contains information about and options for configuring the printer. To gain access to the printer **Properties** tabs, click **Start** on the Windows task bar, click **Settings**, and then click **Printers** for Windows 2000 or **Printers and Faxes** for Windows XP. Right-click the product name, and then click **Properties**.

The following HP printer driver tab is included in the printer **Properties** tab set:

■ **Configure** tab features



NOTE The printer **Properties** tab set also includes Windows-specific tabs. For information about those tabs, see the documentation that came with your computer.

Configure tab Features

The **Configure** tab contains controls for

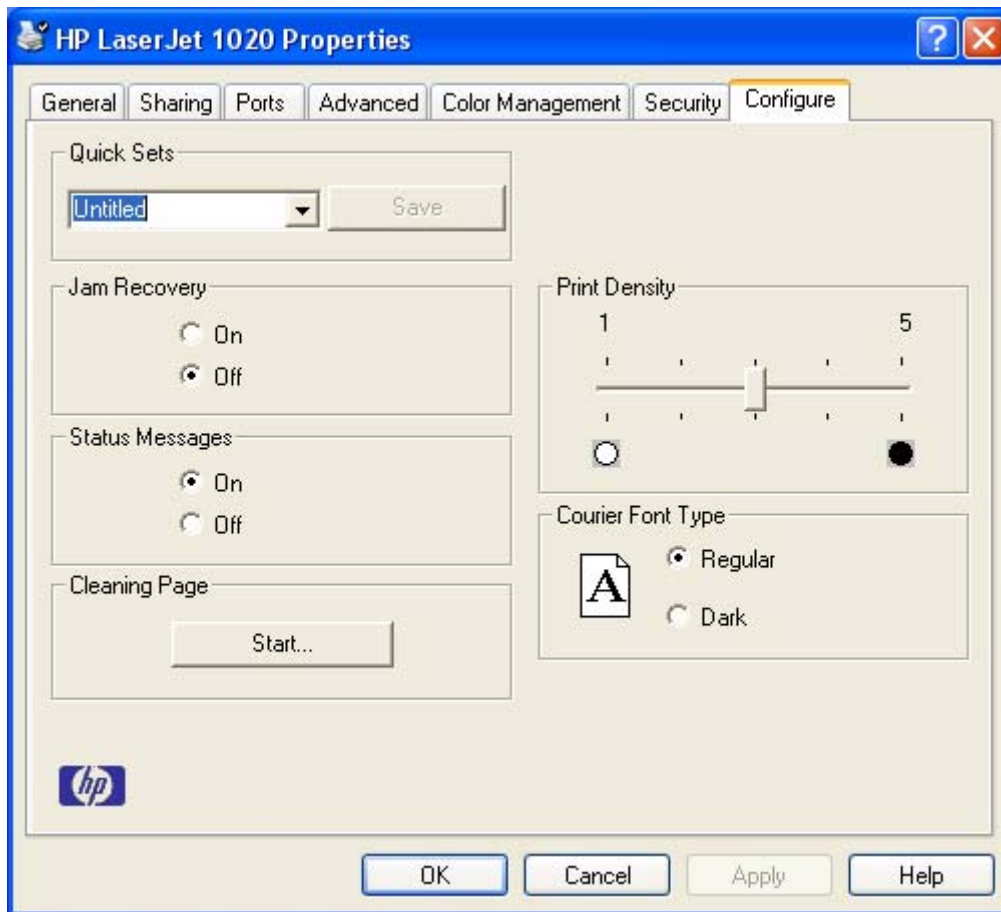


Figure 3-15 Configure tab

The **Configure** tab contains the following controls:

- **Quick Sets** group box
- **Jam Recovery** buttons
- **Status Messages** buttons
- **Cleaning Page**
- **Print Density** control
- **Courier Font Type** buttons

Quick Sets

Use the **Quick Sets** control to store the current combination of driver settings that are found on all of the other **Printing Preferences** driver tabs. Quick sets are either preset or user-defined printing specifications, such as media size and pages per sheet. For more information, see [Quick Sets](#) in the **Paper/Quality** tab section of this guide.

Jam Recovery

Select **On** to reprint a page if a paper jam occurs. Select **Off** to *not* reprint a page if a paper jam occurs. **Off** is the default setting.



NOTE Jobs print faster when **Off** is selected.

Status Messages

Select **On** to allow error messages to display on the computer screen during error conditions. Select **Off** to *not* allow error messages to display on the computer screen during error conditions. **On** is the default setting.



NOTE The paper-out message still appears when **Off** is selected

Cleaning Page

Click **Start** to launch the cleaning page process. This process cleans the product paper path and takes approximately two minutes to complete.

Print Density

Use this control to specify how much toner is put on the page. **3** is the default setting.

Courier Font Type

Select **Regular** to print any text by using TrueType Courier or Courier New with normal weight. Select **Dark** to print any text by using TrueType Courier or Courier New with a dark weight but without changing the font attributes in a program. **Regular** is the default setting.

Properties tab features - Windows 98 SE and Windows Me

In Windows 98 SE and Windows Me, click **Start**, select **Settings**, click **Printers**, right-click the product name, click **Properties**, and then click **Printing Preferences** to gain access to all of the print-driver tabs.

The following figure shows the **Properties** tabs in Windows 98 SE.

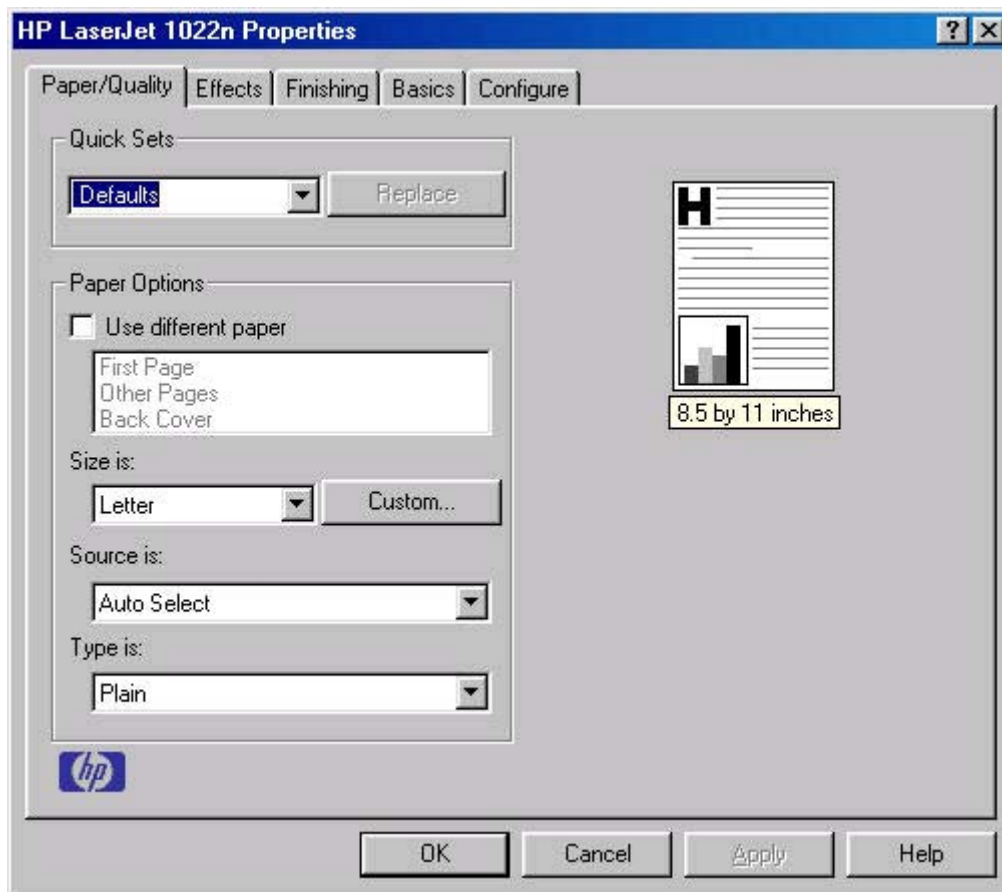


Figure 3-16 Properties tabs - Windows 98 SE

4 Windows software installation



NOTE This chapter covers information about the HP LaserJet 1020 printing-system software for Windows.

This chapter provides information about the following topics:

- [Installation overview](#)
- [Installation options](#)
- [Installation dialog-box options for Windows](#)
- [Uninstall](#)

Installation overview

The software for the HP LaserJet 1020 is shipped on one CD. On Windows systems, the Setup program installs the HP LaserJet 1020 printing-system software from the CD onto the hard disk and updates the Windows files.

On all of the supported platforms, a series of query dialog boxes guides you through the installation process. You are asked to provide information about your computer environment. The Installer guides you through the installation, whether you are configuring a directly-connected or a networked product.

Installation options

The HP LaserJet 1020 printing-system software can be used in the following configurations:

- You install the HP LaserJet 1020 printing-system software on a computer that is directly connected to the product through a USB port. On Windows systems, you can share your HP LaserJet 1020 printer with other users on your network.
- The HP LaserJet 1020 printer is directly connected to a computer and you install only the printer driver.

HP recommends that you install the software before connecting the product to the computer (software-first installation). However, if the product is already connected to the computer, you can install the software by using the Plug-n-Play method or by using the Add Printer Wizard. For more information, see [Plug-n-Play](#) and [Add Printer Wizard](#).

Windows installation for direct connections

Use the following instructions to install the product software on a computer that is running Windows 98 SE, Windows Me, Windows 2000, or Windows XP (32-bit only).



NOTE Set up and turn on the product before installing the printing-system software. Do not connect the product to the computer until the software installation program prompts you to do so.

NOTE You must have administrator privileges to install the printing-system software on Windows 2000 or Windows XP.

- 1 Close all of the programs that are open on the computer.
- 2 Insert the HP LaserJet 1020 printing-system software CD into the CD-ROM drive.



NOTE If your CD does not start automatically, click **Start**, click **Run**, and then browse to and double-click the SETUP.EXE file in the root directory of the CD.

- 3 Click **Next** and follow the onscreen prompts.
- 4 When the installation is nearly complete, the **Finish** dialog box appears and you can print a test page. Click the **Print Test Page** check box, and then click **Finish** to finish the installation and print a test page.
- 5 If you are prompted to restart your computer, click **Yes**.

Setting up Windows sharing (peer-to-peer networking)



NOTE This section describes procedures for sharing a product using Microsoft Windows Sharing (peer-to-peer networking). Peer-to-peer networking is a feature of Microsoft operating systems, not of HP print drivers. If these procedures are not successful, or for more information about peer-to-peer networking procedures, contact Microsoft at the following Web site: www.microsoft.com

This section contains instructions for using Windows sharing to make the product available to network users when the product is directly connected to a host computer.



NOTE Using Windows sharing, the person using the computer directly connected to the product can allow other users on the network to print to the product.

When the product is shared, install the printer drivers on all of the computers that you want to print to the product.

When you have set up the host computer to share your product, you must also configure the client computers. Perform the following steps at the computers of all other network users who want to print to the product.

Setting up the host computer running Windows 98 SE, Windows Me, or Windows 2000

At the computer that is directly connected to the product, perform the following steps:

- 1 Click **Start**, click **Settings**, and then click **Printers**.
- 2 In the printer list, right-click the icon for your HP LaserJet 1020 Series printer, and then click **Sharing**.



NOTE If **Sharing** does not appear on the right-click menu, you must first enable printer sharing for Windows 98 SE or Windows Me. Follow these steps:

1. Click **Start**, click **Settings**, and then click **Control Panel**.
 2. Double-click the **Network** icon.
 3. On the **General** tab, click **File and Print Sharing**.
 4. Click the **I want to be able to allow others to print to my printers check box**, and then click **OK**.
 5. Click **OK** again, and then close the **Control Panel**. If you are prompted to restart your computer, click **Yes**.
-

- 3 On the **Sharing** tab, click the **Share As** option button, and then type a name for the product in the **Share Name** field. Click **OK**.

Setting up the host computer running Windows XP

At the computer that is directly connected to the product, perform the following steps:

- 1 Click **Start**, and then click **Printers and Faxes**.
- 2 In the printer list, right-click the icon for your HP LaserJet 1020 printer, and then click **Sharing**.
- 3 On the **Sharing** tab, click the **Share this printer** option button, and then type a name for the product in the **Share Name** field. Click **OK**.
- 4 Click the **Ports** tab. Click to clear the **Enable bidirectional support** check box, and then click **OK**.

Setting up client computers running Windows 98 SE, Windows Me, or Windows 2000

- 1 Click **Start**, click **Settings**, and then click **Printers**.
- 2 Double-click the **Add Printer** icon to open the **Add Printer** wizard.
- 3 Click **Next** to start the wizard.

- 4 Click the **Local Printer** option button, and then click **Next**.
- 5 Type in the path and share name of the HP LaserJet 1020 printer to which you want to connect.
- OR -
Click **Browse** and navigate to find the HP LaserJet 1020 printer to which you want to connect.
Click **Next**.
- 6 Click the **Yes** or **No** option button when asked if you want to use this product as your default printer for Windows-based programs, and then click **Next**.
- 7 Click **Finish** to complete the installation and close the **Add Printer** wizard.



NOTE You might need the product software CD to complete the printer driver installations.

Setting up client computers running Windows XP

- 1 Click **Start**, and then click **Printers and Faxes**.
- 2 On the left-hand column, under **Printer Tasks**, click **Add a printer** to open the **Add Printer** wizard.
- 3 Click **Next** to start the wizard.
- 4 Click the **A network printer or a printer attached to another computer** option button, and then click **Next**.
- 5 Type in the path and share name of the HP LaserJet 1020 printer to which you want to connect.
- OR -
Click **Browse** and navigate to find the HP LaserJet 1020 printer to which you want to connect.
Click **Next**.
- 6 Click the **Yes** or **No** option button when asked if you want to use this product as your default printer for Windows-based programs, and then click **Next**.
- 7 Click **Finish** to complete the installation and close the **Add Printer** wizard.

Installing the printer driver only



NOTE If the product is directly connected to another user's computer, the product must be shared from that computer by using Windows sharing.

Use the following instructions to install the printer driver only.

Printer-driver installation for Windows 98 SE

- 1 From the **Start** menu, click **Settings**, and then click **Printers**.
- 2 Double-click **Add Printer**, and then click **Next**.
- 3 When asked if the product is a local or network printer, click **Local Printer**, and then click **Next**.

- 4 Click **Have Disk** from the wizard screen that appears.
- 5 Insert the CD into the CD-ROM drive. Navigate to the X:\<language>\DRIVERS folder (where X is the letter of your CD-ROM drive and <language> is your chosen installation language).
- 6 Double-click the .INF file that you find in that folder.
- 7 Complete the installation. When prompted, print a test page to ensure that the printer driver is installed properly.

Printer-driver installation for Windows 2000 or XP

- 1 From the **Start** menu, click **Settings**, and then click **Printers**.



NOTE For Windows XP, click **Start**, and then click **Printers and Faxes**.

- 2 Double-click **Add Printer**, and then click **Next**.
- 3 When asked if the product is a local or network printer, click **Local Printer**, and then click **Next**.
- 4 You might need to first select the printer from the list of printers or type an IP address. If the printer driver is not available, the **Add Printer Wizard** dialog box appears. Click **Have Disk** from the wizard screen.
- 5 Insert the CD into the CD-ROM drive. Navigate to the X:\<language>\DRIVERS folder (where X is the letter of your CD-ROM drive and <language> is your chosen installation language).
- 6 Double-click the .INF file that you find in that folder.
- 7 Complete the installation. When prompted, print a test page to ensure that the printer driver is installed properly.

Plug-n-Play

If the product is already connected to a computer when you begin installing the software, Windows automatically detects the product and uses Plug-n-Play to install the product. During this process, Plug-n-Play calls the Add Printer Wizard to automatically install the printer driver and the USB port. At the end of the Add Printer Wizard, you are given the option to install the additional support files.

Add Printer Wizard



NOTE This procedure is not recommended if you are using Windows 98 SE or ME because the Add Printer Wizard does not install the USB port for these operating systems.

If the product is already connected to a computer when you begin installing the software, Windows automatically detects the product and uses Plug-n-Play to install the printer driver. If you prefer, you can cancel Plug-n-Play and run the Add Printer Wizard manually to install the printer driver. At the end of the Add Printer Wizard, you are given the option to install the additional support files.

If you are using Windows 98 SE or ME, you must also unplug the USB cable from the product and then plug it in again so that Windows can use Plug-n-Play to install the USB port.

Installation dialog-box options for Windows

HP recommends that you install the software before connecting the product to the computer. However, it is possible to install the software if the product is already connected by using Plug-n-Play and the Add Printer Wizard. The following sections show the dialog box options that appear during the HP LaserJet 1020 printing-system software installation on Windows operating systems.

Installing the software before the printer is connected to the computer



NOTE HP recommends that you install the software before connecting the HP LaserJet 1020 to the computer (software-first installation). These instructions are for a software-first installation.

These instructions are intended to be used the first time that you install the HP LaserJet 1020 printing-system software.

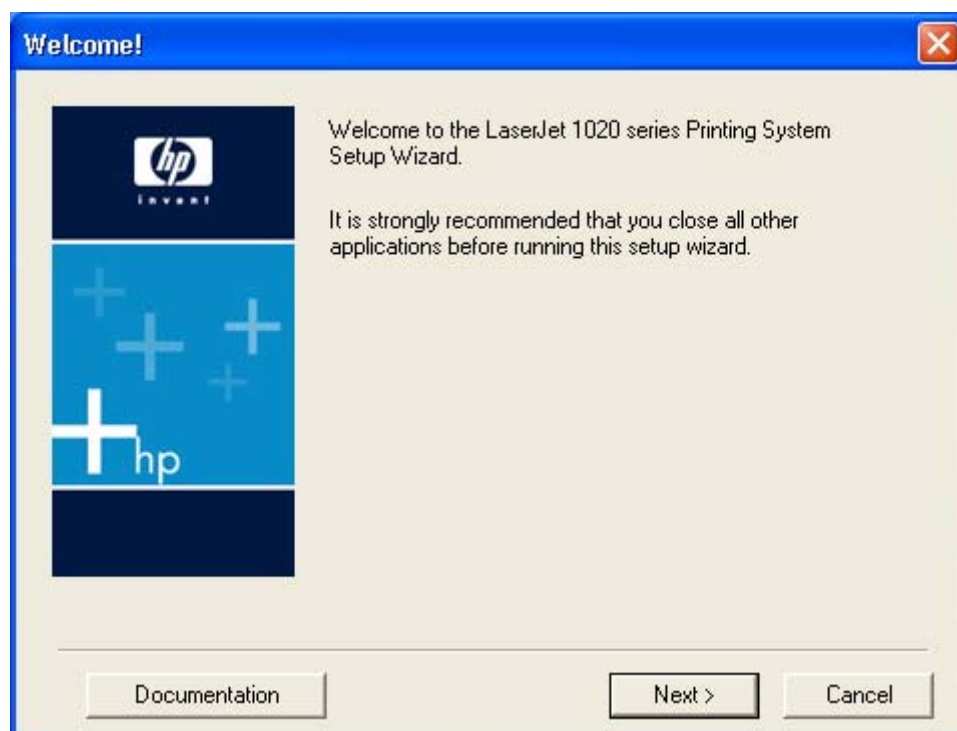


Figure 4-1 Step 1 - CD Browser screen

This dialog box includes three command buttons that lead to three different paths:

Documentation. Click this link to launch your Web browser and go to the **Hewlett-Packard LaserJet 1020 Series Products Software Readme File**.

Next takes you to the **Software License Agreement** screen (Step 2).

Cancel takes you to the **Exit Setup** dialog box (Step 9).

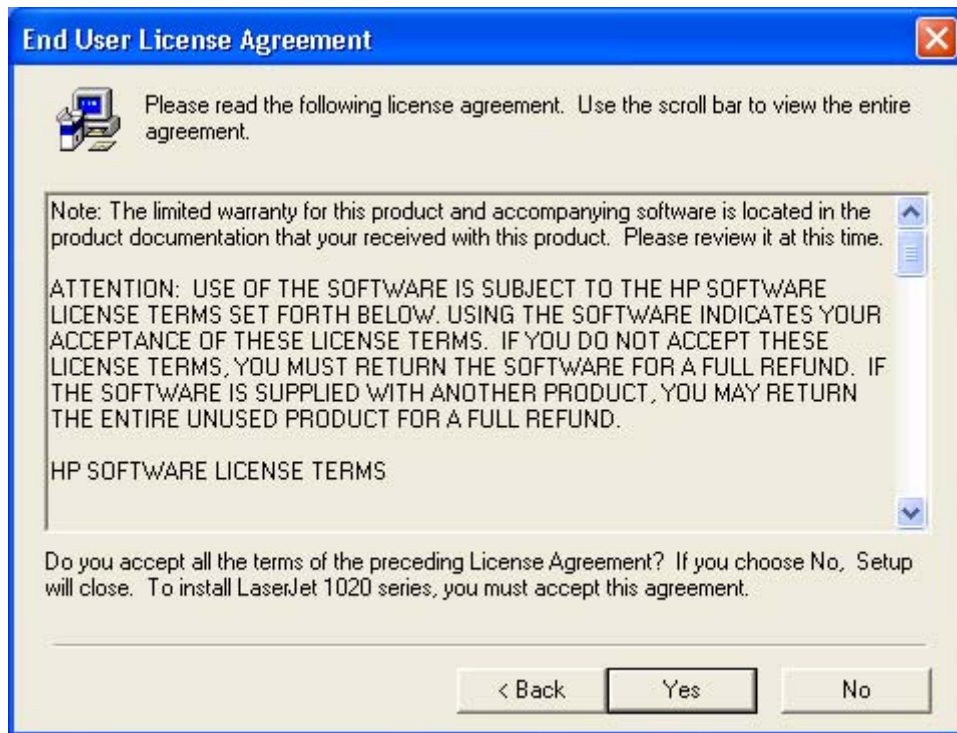


Figure 4-2 Step 2 - HP Software License Agreement screen

Back returns you to the **Welcome** dialog box (Step 1).

Yes takes you to the **Model** dialog box (Step 3).

No takes you to the **Exit Setup** dialog box (Step 19).

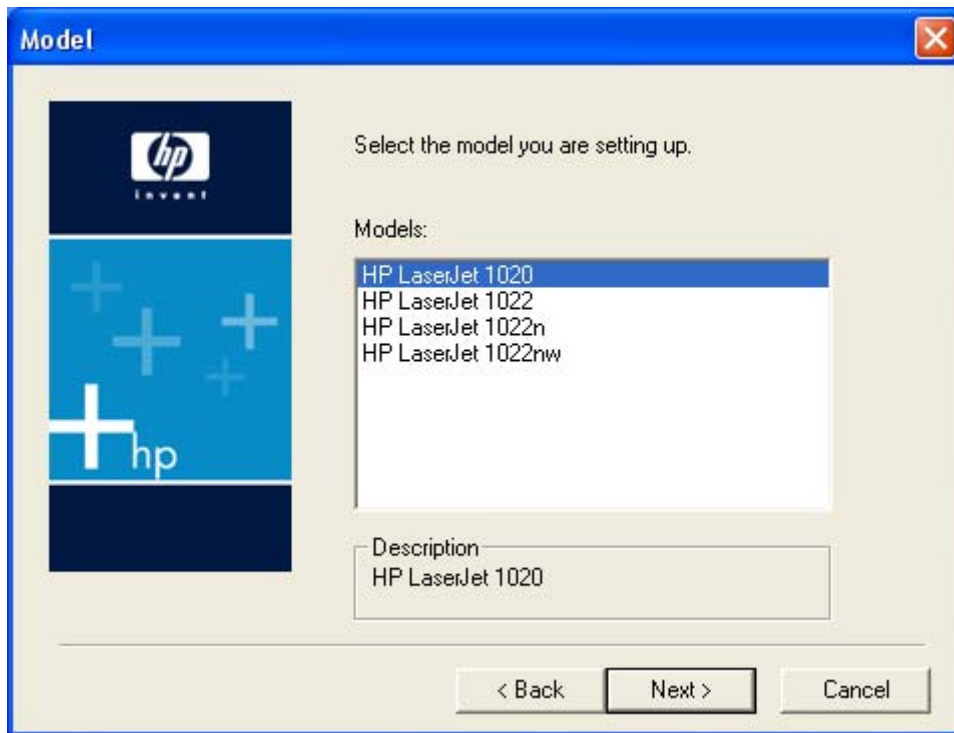


Figure 4-3 Step 3 - Model Selection screen

Clicking **HP LaserJet 1020** and then clicking **Next** takes you to the **Start Copying Files** dialog box (Step 4).

Back returns you to the **Software License Agreement** screen (Step 2).

Cancel takes you to the **Exit Setup** dialog box (Step 9).

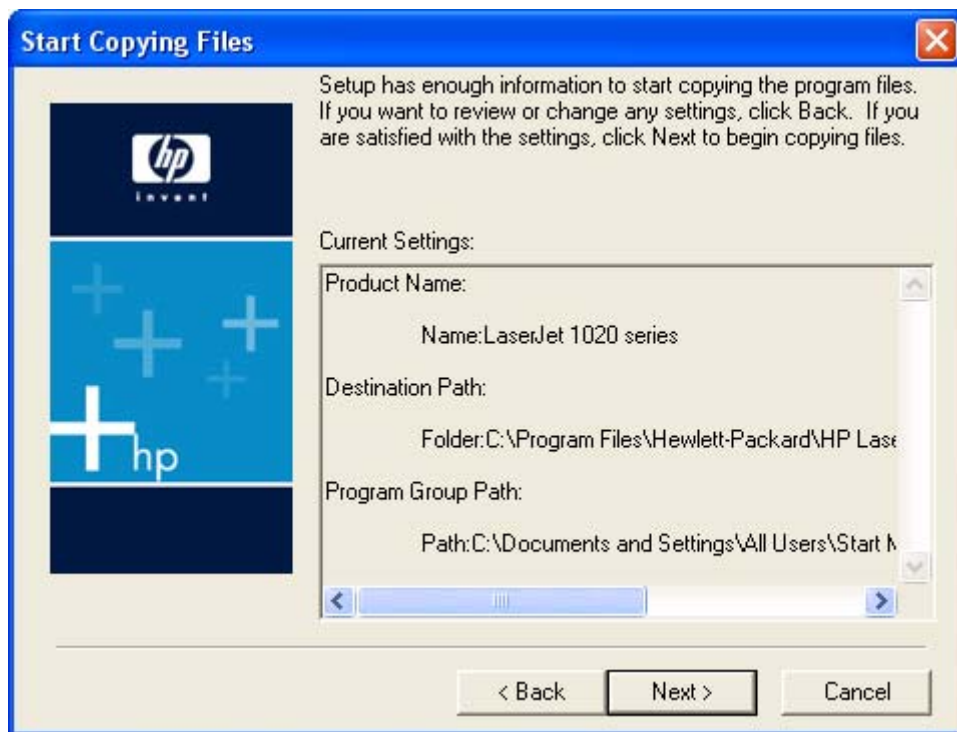


Figure 4-4 Step 4 - Start Copying Files screen

Next starts the installation process and takes you to the **Installation Status** dialog box (Step 5).

Back returns you to the **Model Selection** screen (Step 3).

Cancel takes you to the **Exit Setup** dialog (Step 9).

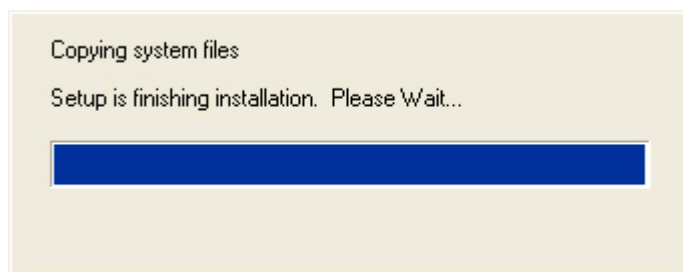


Figure 4-5 Step 5 - Installation Status screen



NOTE During the installation process, the status bar refreshes several times.

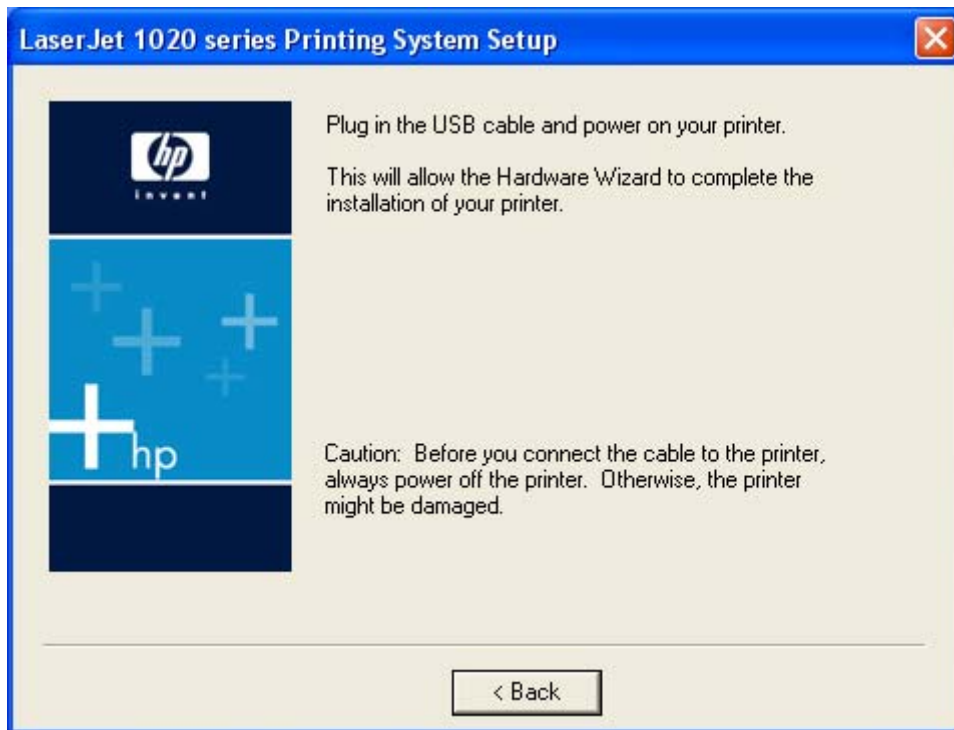


Figure 4-6 Step 6 - USB Cable Connect screen

Back returns you to the **Start Copying Files** dialog box (Step 4).

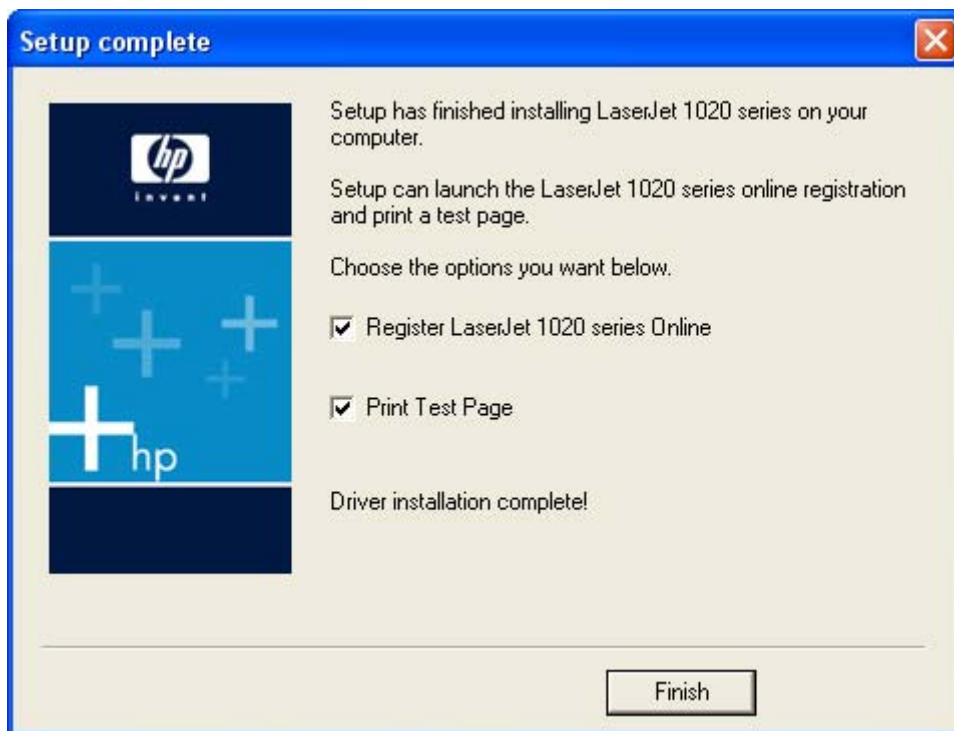


Figure 4-7 Step 7 - Finish screen

The **Register LaserJet 1020 series Online** and **Print Test Page** check boxes are selected by default.

Clicking **Finish** with the **Register LaserJet 1020 series Online** check box selected closes the Install wizard, opens your Web browser, and then takes you to the HP Web Registration Web site.

Clicking **Finish** with the **Print Test Page** check box selected closes the Install wizard and prints a test page.

Clearing both check boxes and clicking **Finish** closes the Install wizard.

Figure 4-8 Step 8 - Registration screen

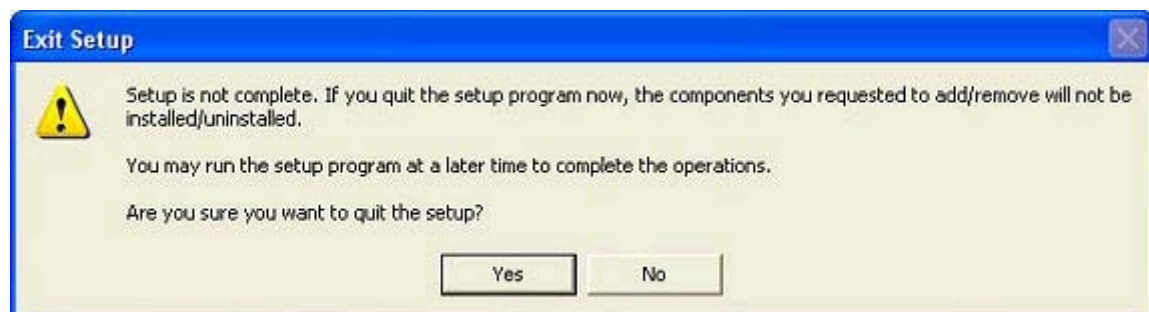


Figure 4-9 Step 9 - Exit Setup screen

Yes cancels the print-driver installation.

No returns you to the last open screen of the installer.

Installing the software when the printer is already connected to a computer

If the product is already connected to a computer when you begin installing the software, Windows automatically detects the product and uses Plug-n-Play to install the printer driver. During this process, Plug-n-Play calls the Add Printer Wizard to automatically install the printer driver and the USB port. When Plug-n-Play completes, you are given the option to install the additional support files.

If you prefer, you can cancel Plug-n-Play and run the Add Printer Wizard manually to install the printer driver. This procedure is not recommended if you are using Windows 98 SE or Me because the Add Printer Wizard does not install the USB port for these operating systems. If you are using Windows 98 SE or Me, when the Add Printer Wizard completes you must unplug the USB cable from the product and then plug it in again so that Windows can use Plug-n-Play to install the USB port.

At the end of the Add Printer Wizard, you are given the option to install the additional support files.

This section shows the dialog box options that appear during the Add Printer Wizard.



Figure 4-10 Step 1 - Add Printer Wizard Welcome Screen

Next takes you to the **Local or Network Printer** dialog box.

Cancel exits the Add Printer Wizard.

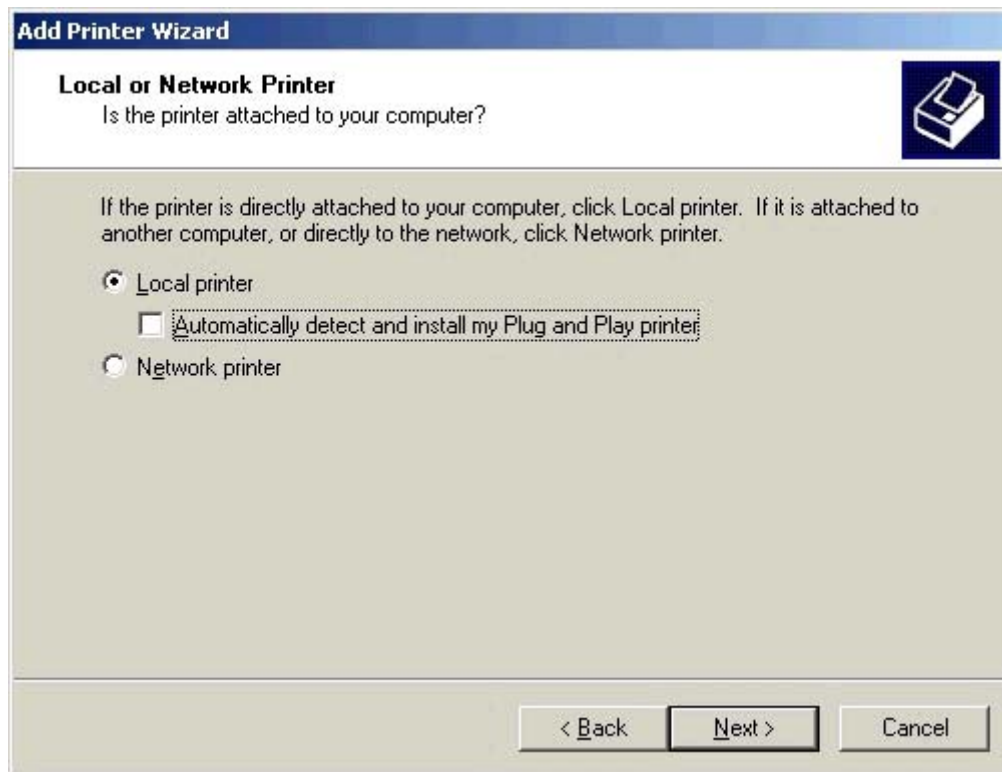


Figure 4-11 Step 2 - Local or Network Printer screen

Select **Local printer**.

Select **Automatically detect and install my Plug and Play printer** to have Windows automatically set up the product.

Back returns you to the Welcome screen (Step 1).

Next takes you to the **Select the Printer Port** screen (Step 3).

Cancel exits the Add Printer Wizard.

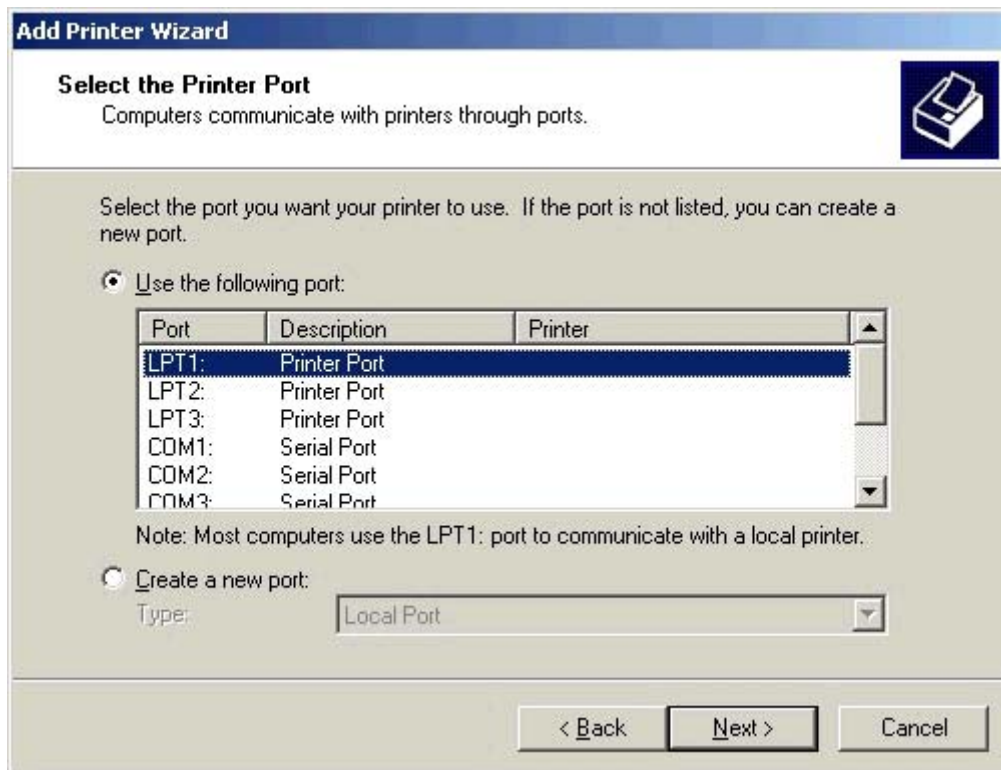


Figure 4-12 Step 3 - Select the Printer Port screen

Select **Use the following port** to use an existing port on your computer.

Select **Create a new port** to add a new port.

Click **Next** to continue.

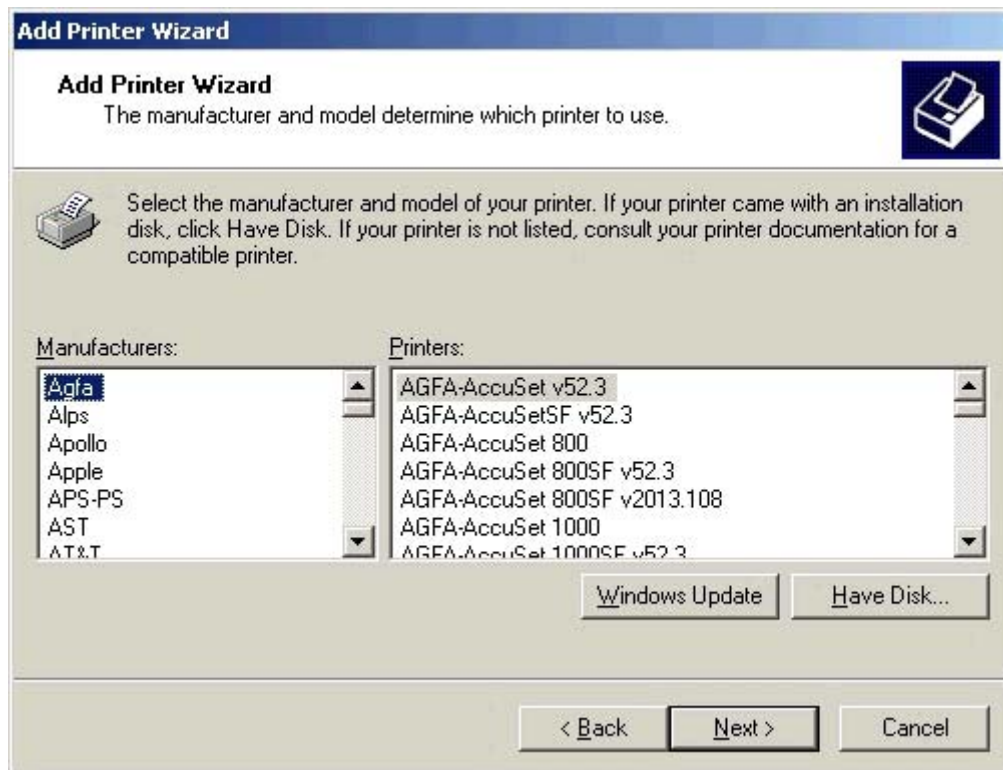


Figure 4-13 Step 4 - Manufacturer and model screen

Click **Have Disk...** to install the software from the CD-ROM.

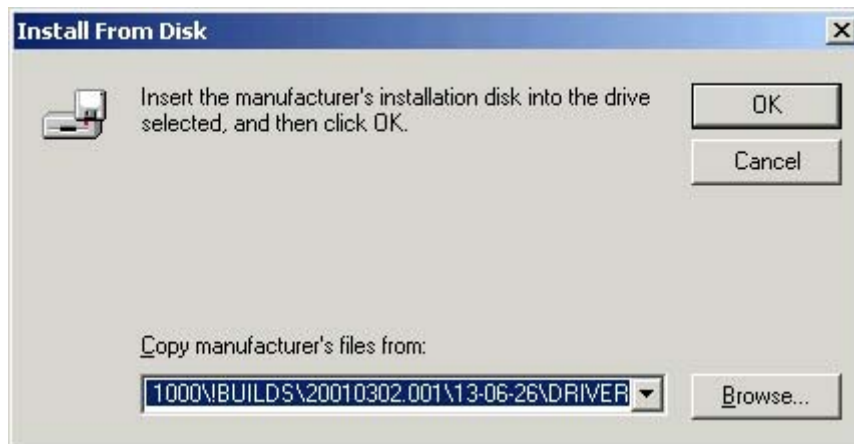


Figure 4-14 Step 5 - Install from Disk

Click **Browse** to begin searching for the driver file that is on the CD-ROM.



Figure 4-15 Step 6 - Select the correct language

Click the folder for the correct language, and then click **Open**.

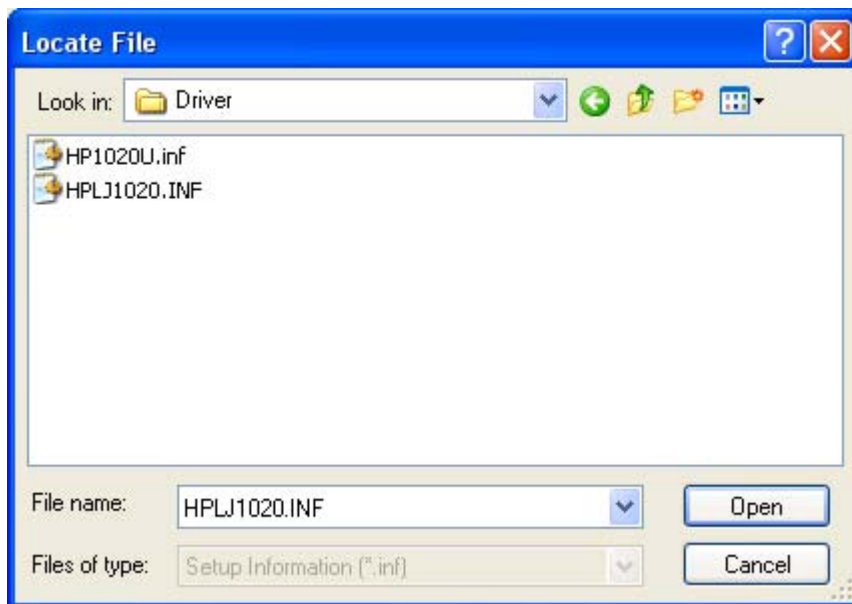


Figure 4-16 Step 7 - Select the .INF file

Click the **HPLJ1020.INF** file, and then click **Open**.



Figure 4-17 Step 8 - Install from Disk, screen 2

Click **OK** to continue.

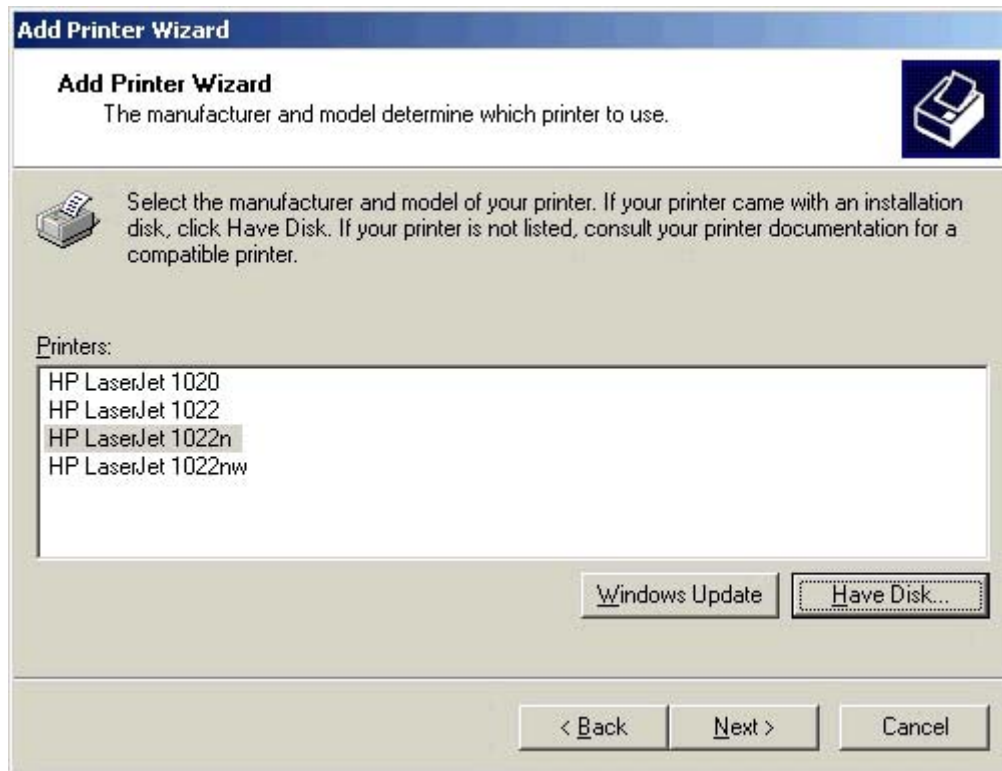


Figure 4-18 Step 9- Manufacturer and model screen 2

Select the correct HP LaserJet 1020 model.

Click **Next** to continue.

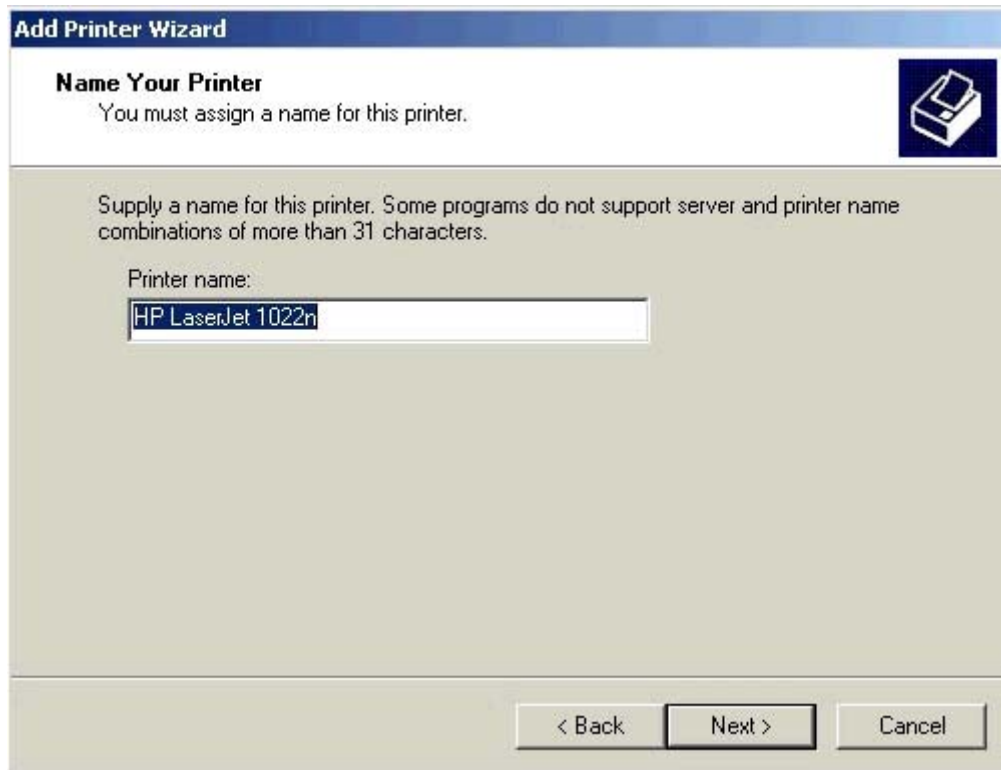


Figure 4-19 Step 10 - Name Your Printer screen

Type a name for the product.

Click **Next** to continue.

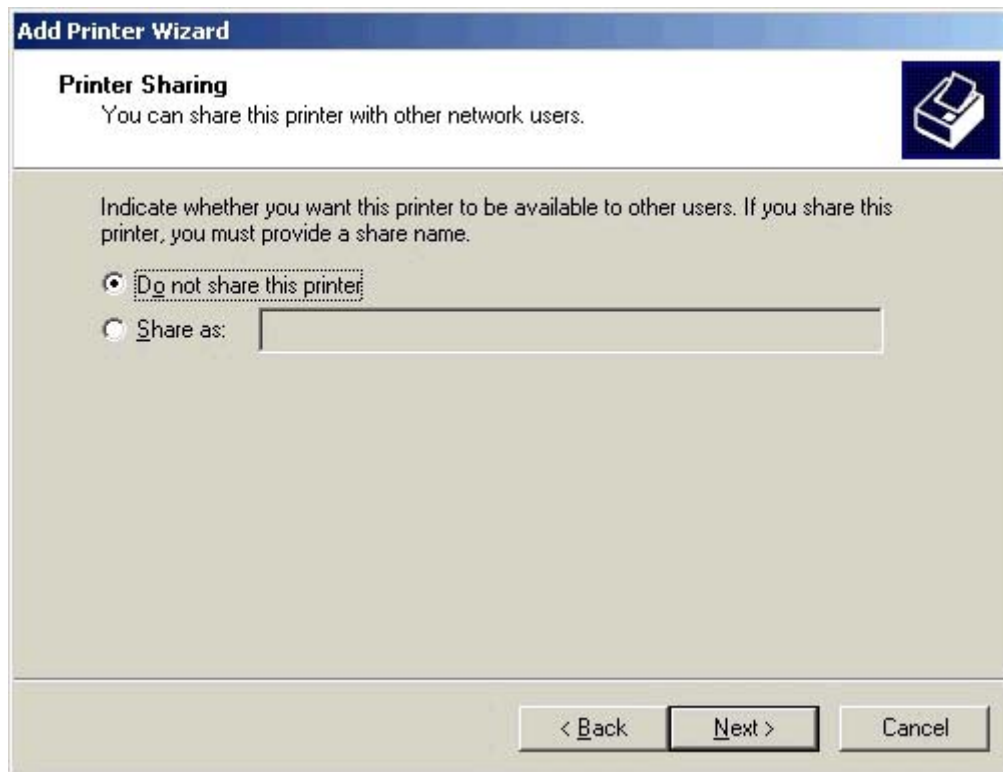


Figure 4-20 Step 11 - Printer Sharing screen

Select **Do not share this printer** if only one computer will use the product.

Select **Share as:** to enable Windows sharing (peer-to-peer networking)

Click **Next** to continue.

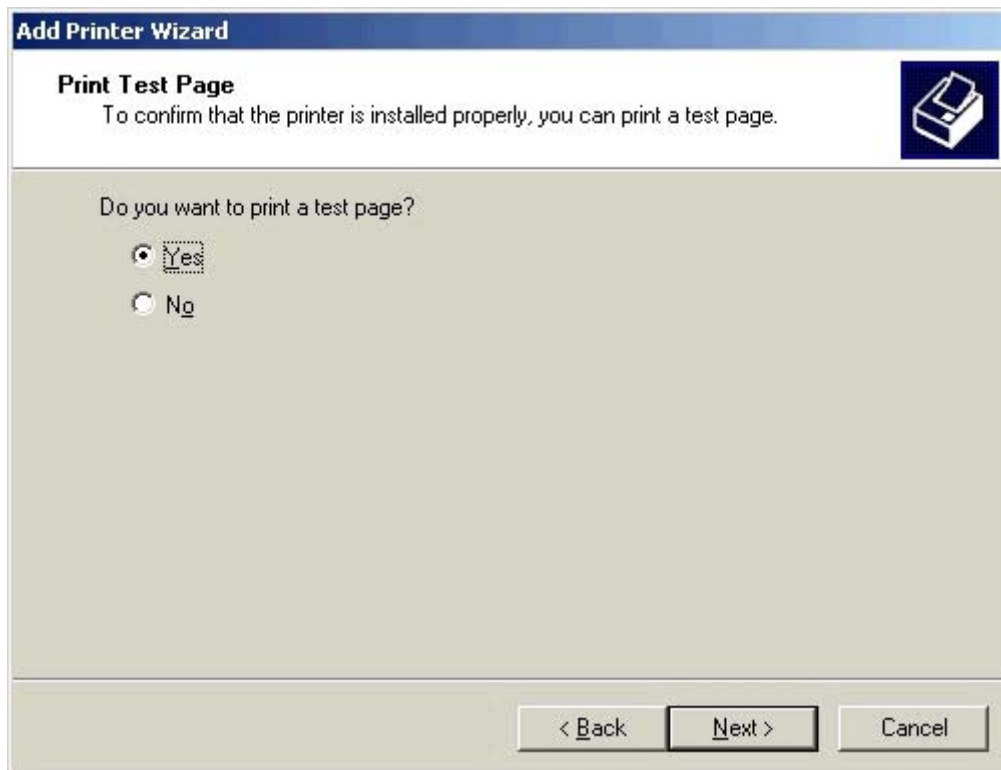


Figure 4-21 Step 12 - Print Test Page screen

Select **Yes** to print a test page after the software is installed.

Select **No** if you do not want to print a test page.

Click **Next** to continue.



Figure 4-22 Step 13 - Completing the Add Printer Wizard screen

Click **Finish** to complete the Add Printer Wizard.

Uninstall

This section provides information about the following topics:

- [Uninstall instructions for Windows](#)

Uninstall instructions for Windows

Choose one of the following two methods to uninstall the HP LaserJet 1020 printing-system software:

- Uninstalling using the HP program group (recommended)
- Uninstalling using the Windows Add/Remove Program feature

Uninstalling using the HP program group (recommended)



NOTE To uninstall the software from Windows 2000 or XP, you must log on with administrator privileges.

- 1 Close all of the programs that are open on the computer.
- 2 Click **Start**, click **Programs**, select **HP**, select **HP LaserJet 1020 series**, and then click **Uninstall LaserJet 1020 series**.
- 3 The **Welcome to the LaserJet 1020 series uninstall Wizard** dialog box appears.

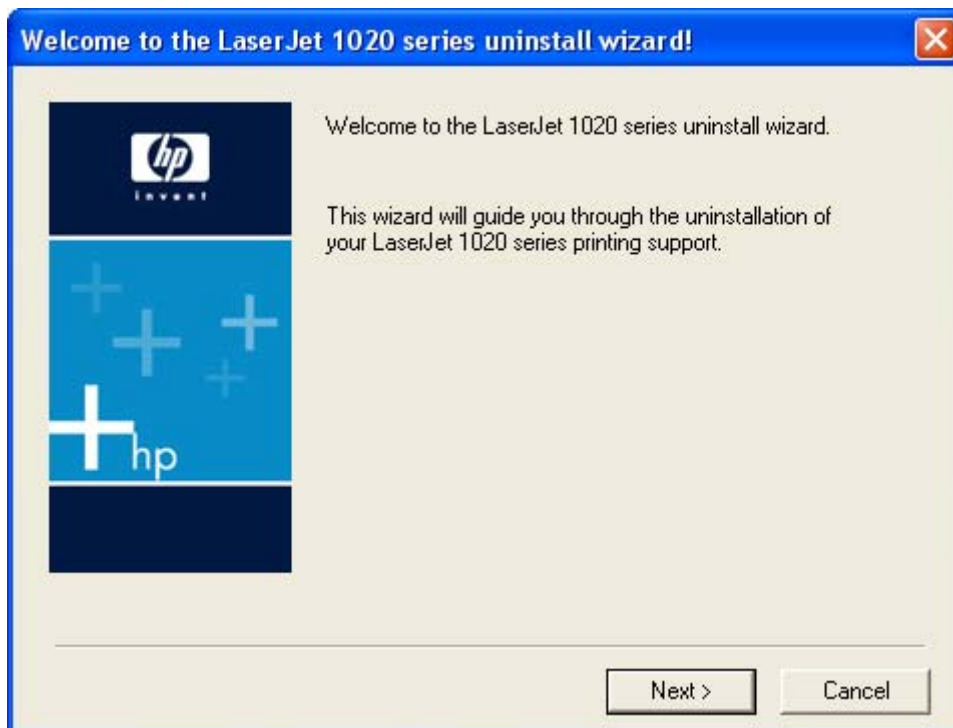


Figure 4-23 Welcome to the LaserJet 1020 series uninstall Wizard dialog box

Click **Next** to continue.

- 4 The **LaserJet 1020 series printer driver uninstall information.** dialog box appears.

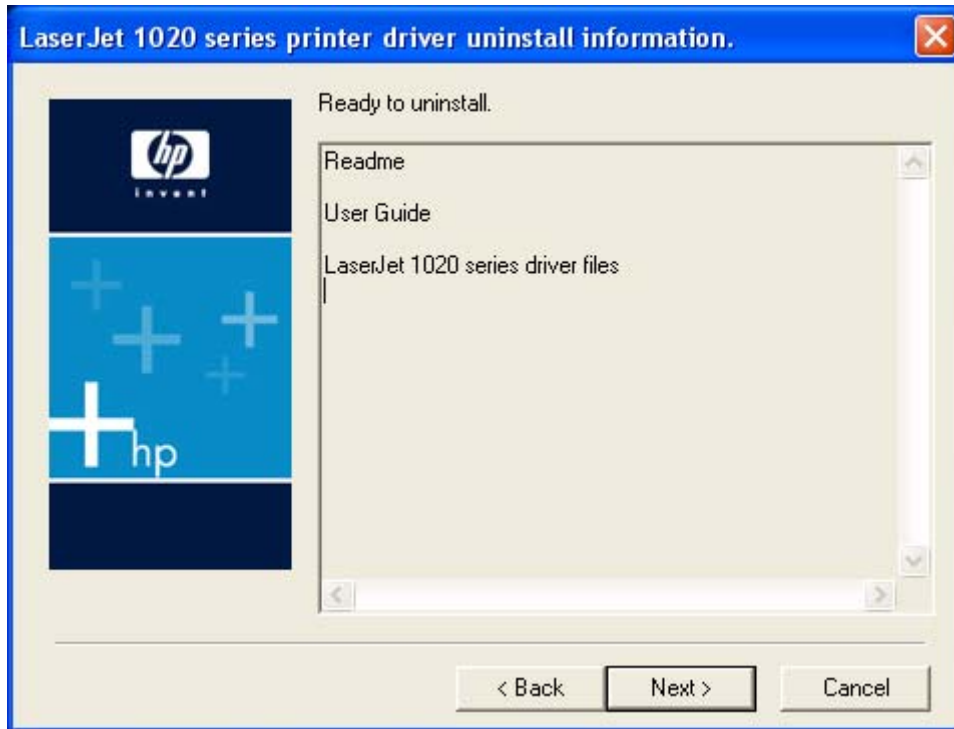


Figure 4-24 Remove the Program dialog box

Click **Next** to begin the uninstall process.

- 5 The **Uninstalling the HP LaserJet 1020 series** dialog box appears.

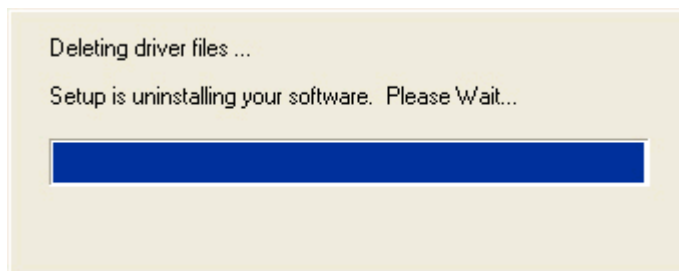


Figure 4-25 Uninstalling the HP LaserJet 1020 series dialog box

The progress bar reflects the status of the uninstall process.

- 6 The **Restart** dialog box appears.

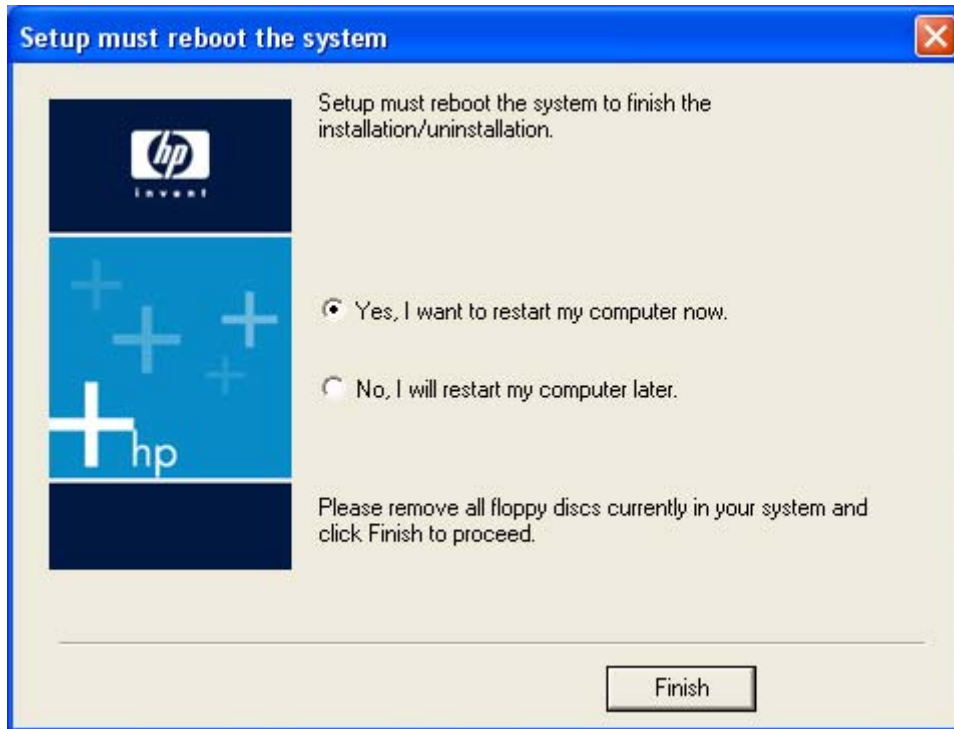


Figure 4-26 Restart dialog box

Click **Yes, I want to restart my computer now.** to restart your computer and finish the uninstall process.

Uninstalling using Windows Add/Remove programs feature

Follow these steps to uninstall the HP LaserJet 1020 printing-system software by using the Windows **Add/Remove programs** feature.



NOTE Using this uninstall method, you do not need the HP LaserJet 1020 printing-system software CD.

NOTE To uninstall the software from Windows 2000 or XP, you must log on with administrator privileges.

- 1 Close all of the programs that are open on the computer.

- 2 For Windows 98 SE, Windows Me, or Windows 2000, click **Start**, click **Settings**, click **Control Panel**, and then double-click **Add/Remove programs**

For Windows XP, click **Start**, click **Control Panel**, and then double-click **Add/Remove programs**.



Figure 4-27 Windows Control Panel

- 3 Click **Change or Remove Programs**, click **LaserJet 1020 series**, and then click **Change/Remove**.

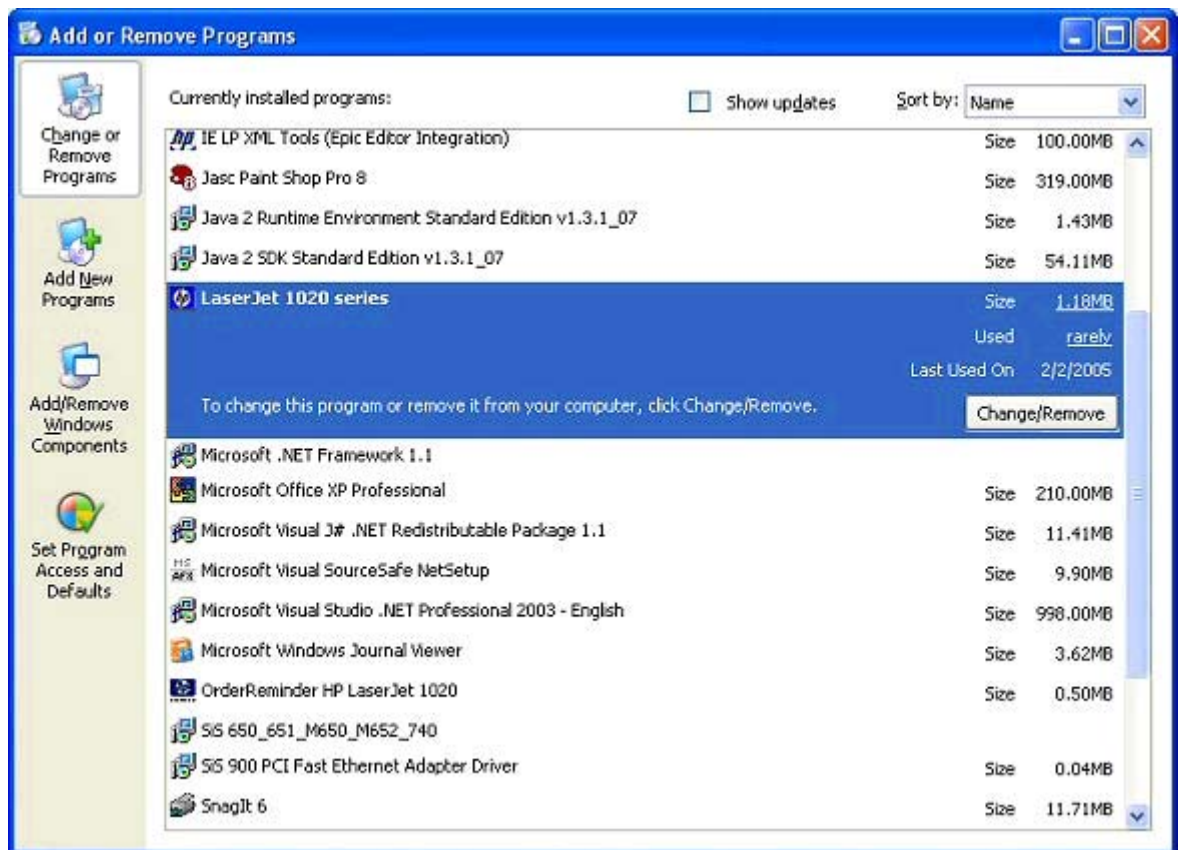


Figure 4-28 Windows Change or Remove programs

- 4 The **Remove the Program** dialog box appears.

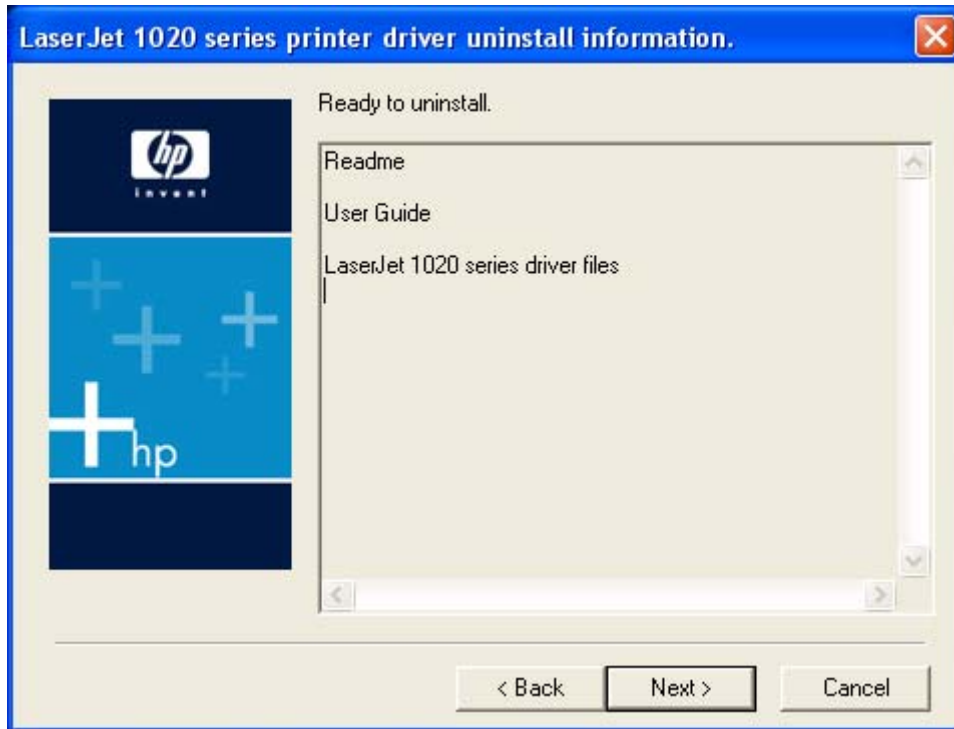


Figure 4-29 Remove the Program dialog box

Click **Next** to begin the uninstall process.

- 5 The **Uninstalling the HP LaserJet 1020 series** dialog box appears.

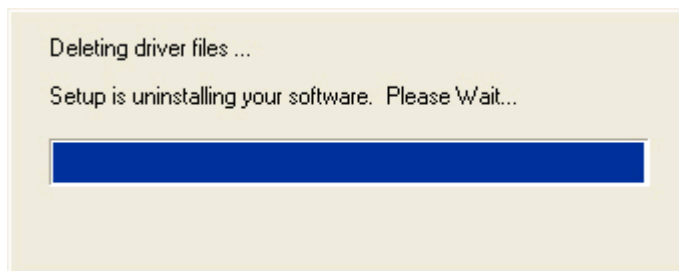


Figure 4-30 Uninstalling the HP LaserJet 1020 series dialog box

The progress bar reflects the status of the uninstall process.

- 6 The **Restart** dialog box appears.

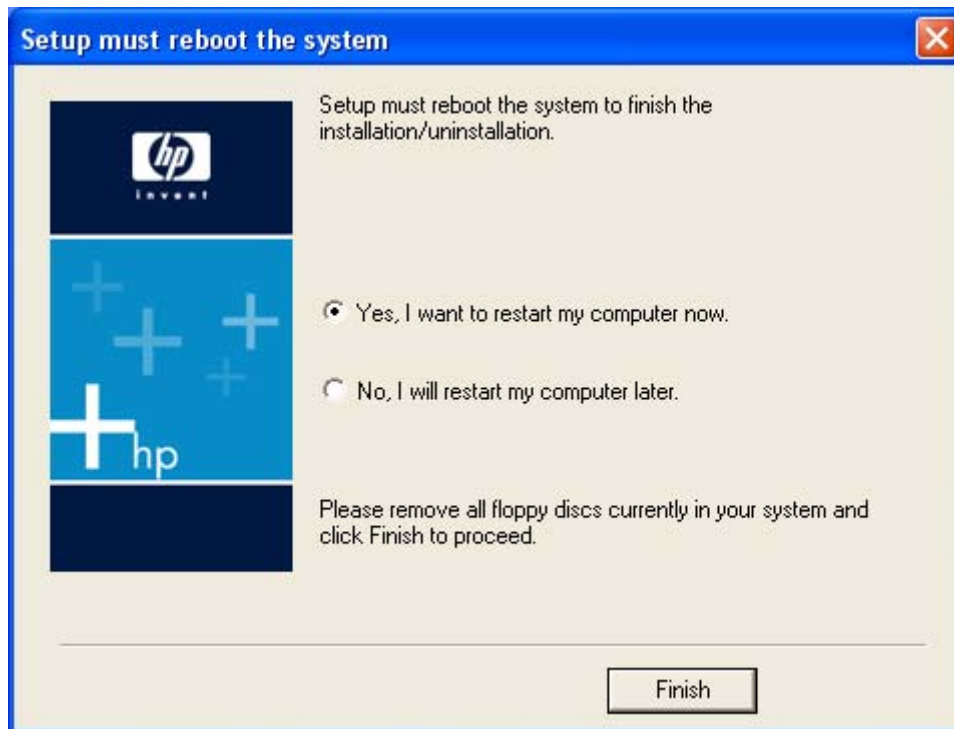


Figure 4-31 Restart dialog box

Click **Yes, I want to restart my computer now.** to restart your computer and finish the uninstall process.

This uninstall method does not automatically remove the HP Software Update utility. To remove the HP Software Update utility, click **No, I will restart my computer later.** here and then follow the instructions in the [Removing the HP Software Update utility](#) section.

Removing the HP Software Update utility

Follow these instructions to remove the HP Software Update utility from your computer.

- 1 For Windows 98 SE, Windows Me, or Windows 2000, click **Start**, click **Settings**, click **Control Panel**, and then double-click **Add/Remove programs**.
For Windows XP, click **Start**, click **Control Panel**, and then double-click **Add/Remove programs**.
- 2 Click **Change or Remove programs**, click **HP Software Update**, and then click **Remove**.
- 3 The **Remove the Program** dialog box appears. Click **Remove** to begin the uninstall process.
- 4 The **Uninstalling the HP LaserJet 1020 series** dialog box appears. The progress bar reflects the status of the uninstall process.
- 5 When the uninstall process is completed, the **Finish** dialog box appears. Click **Finish** to continue.
- 6 The **Restart** dialog box appears. Click **Yes** to restart your computer and finish the uninstall process.

Index

Symbols/Numerics

% of Normal Size option 43

A

About button 56
Add Printer Wizard 66, 73
administrator Quick Sets 31
applications, driver settings 28

B

back cover, paper for 38
Basics tab 53
bidirectional communication
 device conflicts, troubleshooting 24
 Windows operating systems supported 15
binding options 49
black, printing text as 53
Booklet Layout settings 50
both sides, printing on 49

C

cartridges, page capacities 3
CD
 directory structure, Windows 4
 languages 4
 ordering 6
CD Browser screen 67
components, software
 Windows 14
Configure tab 56
conflicts, device 24
connection types 23
constraint messages 29
context-sensitive Help 29
Copies, number of 54
covers, different paper for 38
custom paper sizes 33

D

device conflicts 24
dialog boxes, Windows installation
 CD Browser 67
 Exit Setup 72
 Finish 71
 HP Software License Agreement 68
 Installation Status 70
 Model Selection 69
 Registration 72
 Start Copying Files 70
 USB Cable Connect 71
direct connections 23
directory structure, CD
 Windows 4
Document Options 48
document preview image 41
documentation
 localized versions 8
 operating systems supported 15
dots per inch (dpi)
 settings 52
 specifications 3
double-sided printing 49
dpi (dots per inch)
 settings 52
 specifications 3
drivers
 Help system, Windows 28
 installing Windows 65
 localized versions 15
 operating systems supported 14
 settings, accessing 28
 version number 56
duplexing (manually) 49

E

EconoMode 52
Effects tab 41
Exit Setup screen 72

F

FastRes settings 52
features
 model comparison 3
 Windows printing-system software 14
files, included on installation CD
 Windows 4
Finish screen 71
Finishing tab 47
first page out 3
first page, paper for 38
Fit to Page options 42
Flip Pages Up 49
fulfillment centers 6

H

Help
 localized versions 15
 operating systems supported 15
 Windows driver 28
host-based driver
 Help system, Windows 28
installing Windows 65
localized versions 15
operating systems supported 14
settings, accessing 28
version number 56
HP Print Screen utility 19
HP Software License Agreement screen 68
HP Software Update Utility 17
HP Software Update utility 89

I

- in-box file layout
 - Windows 4
- inches, settings 36
- installation
 - dialog boxes, Windows 67
 - driver-only 65
 - Windows software 62, 63
- installation notes 15
- Installation Status screen 70
- installers
 - localized versions 15
 - Windows, included 14
 - Windows, new features 14

L

- landscape orientation
 - Flip Pages Up 49
 - settings 55
- languages, localized versions
 - CDs 4
 - documentation 8
 - HP Print Screen utility 21
 - key to abbreviations 15, 16
 - ordering software 6
 - software components 15
- license agreement
 - Windows 68
- localized versions
 - CDs 4
 - documentation 8
 - HP Print Screen utility 21
 - key to abbreviations 15, 16
 - ordering software 6
 - software components 15

M

- manuals
 - localized versions 8
 - operating systems supported 15
- measurement units 36
- media
 - & of Normal Size option 43
 - custom sizes 33
 - Fit to Page options 42
 - Pages per Sheet 51
 - Paper Options 32
 - Paper/Quality tab 30
 - Print Document On settings 42

- Print on Both Sides (Manually) 49
- Scale to Fit option 42
- Size is settings 32
- Source is 37
- tray capacities 3
- Type is settings 37
- Use different paper options 38
- memory
 - product, included 3
 - Windows system requirements 12
- Microsoft Windows. *See* Windows
- millimeters, settings 36
- Model Selection screen 69

N

- networks
 - features available 23
 - peer-to-peer, setting up 63
 - ports 3
- number of copies 54

O

- operating systems supported
 - Windows 12
- ordering software 6
- orientation
 - Flip Pages Up 49
 - settings 55

P

- page orientation
 - Flip Pages Up 49
 - settings 55
- pages per minute 3
- Pages per Sheet settings 51
- paper
 - & of Normal Size option 43
 - custom sizes 33
 - Fit to Page options 42
 - Pages per Sheet 51
 - Print Document On settings 42
 - Print on Both Sides (Manually) 49
 - Scale to Fit option 42
 - Size is settings 32
 - Source is 37
 - tray capacities 3
 - Type is settings 37
 - Use different paper options 38

- paper handling features 3
- Paper Options 32
- Paper/Quality tab 30
- parallel ports, not supported 3
- part numbers
 - documentation 8
 - software CDs 6
- peer-to-peer networking 63
- Percent of Normal Size option 43
- Plug-n-Play 66, 73
- portrait orientation
 - Flip Pages Up 49
 - settings 55
- ports
 - connecting 24
 - device conflicts 24
 - operating systems supported 3
 - specifications 3
- preview image 41
- Print All Text as Black 53
- print cartridges, page capacities 3
- Print Document On settings 42
- Print on Both Sides (Manually) 49
- Print Quality tab 52
- Print Screen utility 19
- printer drivers. *See* drivers
- Printer Properties tabs 56
- Printing Preferences tabs 30
- programs, driver settings 28
- ProRes settings 52

Q

- quality 52
- Quick Sets 31

R

- RAM
 - included 3
 - Windows system requirements 12
- Registration screen 72
- removing software
 - HP Software Update utility 89
 - using Add/Remove programs 85
 - using HP program group 83
- resizing settings 42
- resolution
 - settings 52
 - specifications 3

ROM, included 3
Rotate by 180 degrees 55

S

Scale to Fit option 42
screen capture utility 19
settings, driver
 accessing 28
 Quick Sets 31
sharing
 setting up 63
Size is option 32
software license agreement
 Windows 68
software, ordering 6
Source is settings 37
speed specifications 3
Start Copying Files screen 70
system requirements
 Windows 12

T

text, printing as black 53
trays
 capacities 3
 custom paper sizes 36
 Source is settings 37
troubleshooting
 constraint messages 29
 device conflicts 24
two-sided printing 49
Type is settings 37

U

uninstalling
 HP Software Update utility 89
 Windows software using Add/
 Remove programs 85
 Windows software using HP
 program group 83
units of measurement 36
Update utility 17, 89
USB Cable Connect screen 71
USB port
 Add Printer Wizard 66, 73
 device conflicts 24
 devices vs. hubs 24
 operating systems supported 3
 specifications 3
Use different paper options 38
user guides

localized versions 8
operating systems supported
15

V

version number, driver 56

W

watermarks 44
Web sites
 ordering software 6
What's this Help 29
Windows
 Add Printer Wizard 66, 73
 component availability 14
 connection types 23
 device conflicts 24
 dialog boxes, installation 67
 directory structure on
 installation CD 4
 driver-only installation 65
 installation options 62
 installers 14
 installing software 63
 new features for 14
 operating systems supported
 12
 Plug-n-Play 66, 73
 sharing, setting up 63
 system requirements 12
 uninstalling product software
 using Add/Remove programs
 85
 uninstalling product software
 using HP program group 83
uninstalling software using HP
 Software Update utility 89

© 2005 Hewlett-Packard Development Company, L.P.

www.hp.com

