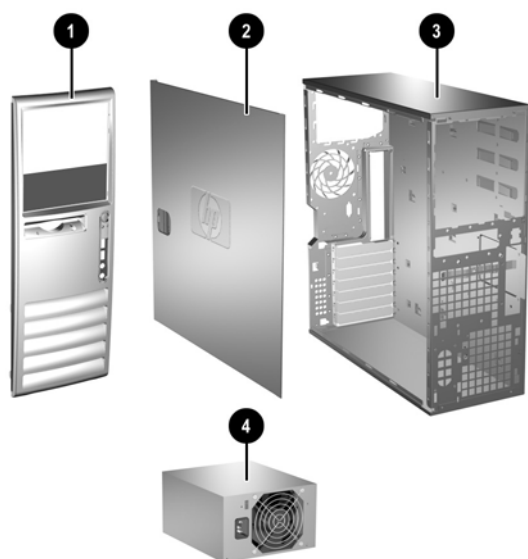


HP Compaq Business PC dc7600 Series Personal Computer

Illustrated Parts Map
Convertible Minitower



System Unit

1	Front bezel assembly with sub panel, 5.25" bezel blank, and diskette drive bezel	371116-001
1	Front bezel assembly with sub panel, 5.25" bezel blank, and diskette drive bezel (unpainted, for Blue Angel use only)	392406-001
2	Computer access panel	392405-001
3	Chassis assembly	not spared
4	Power supply, PFC	381023-001

Mass Storage Devices (not illustrated)

40 GB\7200 RPM SATA hard drive	365555-001
80 GB\7200 RPM SATA hard drive	391945-001
160 GB\7200 RPM SATA hard drive	391741-001
Diskette drive with mounting screws	392415-001

Optical Disk Drives

48X CD-ROM drive with mounting screws	326773-005
52X CD ROM drive	333969-005
48X/32X/48X CD-RW	395272-001
48X/32X/48X +16X DVD/CD-RW	359493-005
16X DVD+/-RW with LightScribe (DL/DF)	390882-001
16/48X DVD-ROM drive	391946-001

Modem Cable Adapters, RJ-11 to Country (not illustrated)

Belgium	316904-181	Italy	316904-065
Czech	234963-225	Netherlands	316920-335
Denmark	316904-085	Norway	234963-095
Finland	316904-355	Poland	316904-241
France	316904-051	Scandinavia	382848-DH1
Germany	316904-045	Sweden	316904-105
Greece	316904-151	Turkey	316904-141
Hebrew	316904-BB1	U.K.	158593-035
Hungary	234963-215		

© 2005 Hewlett-Packard Development Company, L.P.

HP and the HP logo are trademarks of Hewlett-Packard Development Company, L.P.

All other product names mentioned herein may be trademarks of their respective companies.

HP shall not be liable for technical or editorial errors or omissions contained herein. The information in this document is provided "as is" without warranty of any kind and is subject to change without notice. The warranties for HP products are set forth in the express limited warranty statements accompanying such products. **Nothing herein should be construed as constituting an additional warranty.**

1st Edition, June 2005

Document Number
390743-001

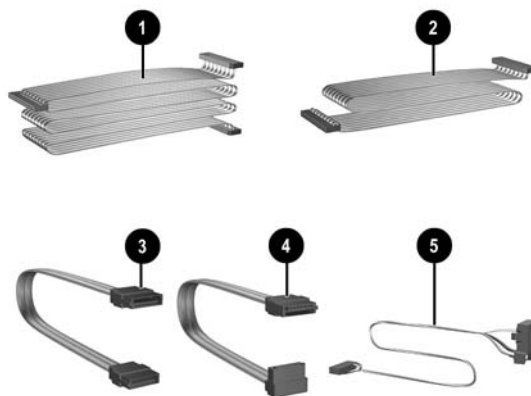


Keyboards (not illustrated)

PS/2, Basic		382925-xxx	
USB, Basic		382926-xxx	
USB, Basic, BG1650		382927-xxx	
Belgian*	-181	Korean (Hangul)	-AD1
BHCSY	-B41	LA Spanish	-161
Brazilian Portuguese	-201	Norwegian	-091
Czech	-221	PRC	-AA1
Danish*	-081	Portuguese	-131
Finnish	-351	Slovakian	-231
French*	-051	Spanish	-071
French Arabic	-DE1	Swedish*	-101
French Canadian	-121	Swiss*	-111
German*	-041	Taiwanese	-AB1
Hebrew	-BB1	Thai	-281
Hungarian	-211	Turkish	-141
International*	-B31	U.S.	-001
Italian*	-061	U.K.	-031
Japanese	-291		

*Only these countries include the 382927 keyboard

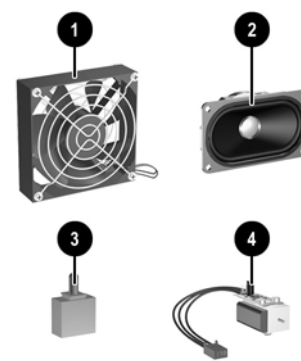
PS/2, Basic, 105 key		396215-xxx	
USB, Basic, 105 key		396217-xxx	
Arabic	-171	Russian	-251
Greek	-151		



Cables

1	IDE cable, ODD, 17.25", two device	392286-001
2	Diskette drive cable	392288-001
3	SATA hard drive cable for 5.25" ODD bay only, 19.5"	391739-001
4	SATA hard drive cable, 13"	391738-001
5	Power switch/LED cable without switch holder	392285-001
*	Front I/O device with cable	392408-001
*	DMS-59 to dual dongle cable	339257-005
*	RJ-11 telephone cable (use with 361286-021)	198220-005
*	Telephone modular 6-position cable assembly	366510-001
*	Telephone modular 6-position cable assembly (Australia)	304398-015
*	Telephone modular 6-position cable assembly (Sweden)	304398-101
*	Telephone modular 6-position cable assembly (Switzerland)	304398-115

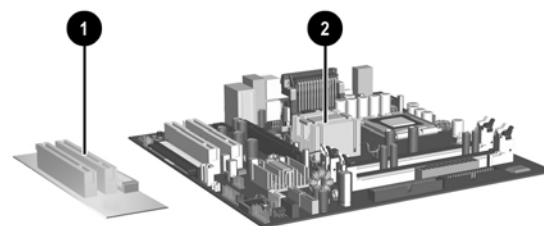
*Not shown



Miscellaneous Parts

1	Chassis fan	392412-001
2	Speaker	392413-001
3	Hood sensor	392417-001
4	Solenoid lock with cable	392416-001
*	PCI latch kit	339808-005
*	5.25" Bay bezel blank	335937-005
*	Diskette drive bay bezel blank	336581-005
*	Diskette drive bay bezel	371119-001
*	Diskette drive bay bezel blank, (unpainted, for Blue Angel only)	392407-001
*	Heatsink with thermal grease and alcohol pad	435920-001
*	Power switch holder (use with 392285-001)	336156-005
*	Mouse, 2-Button, PS/2 with scroll wheel	390937-001
*	Mouse, 2-Button, USB, optical with scroll wheel	390938-001
*	Mouse, 2-Button, USB, with scroll wheel	323615-005
*	Rubber foot (4 ea)	336445-005
*	Drive Key II, 256 MB	372889-001
*	Real-time-clock battery	153099-001
*	Port control cover	340400-005
*	Second Serial Port	392414-001
*	PCI extender card tray	392418-001
*	Card guide	371117-001
*	Front I/O device mounting bracket	371118-001
*	Kensington cable lock	370856-001
*	HP Business PC Security Lock (without cable)	335808-005
*	HP Business PC Security Lock (with cable)	335809-005
*	DVI to VGA adapter	202997-005

*Not shown



Standard and Optional Boards

1	PCI extender card	391084-001
2	System board with alcohol pad and thermal grease	380356-001
Memory Modules		
*	256 MB/533 MHz FSB	393392-001
*	512 MB/533 MHz FSB	393393-001
*	1.0 GB/533 MHz FSB	393394-001
*	256 MB/667 MHz FSB	396519-001
*	512 MB/667 MHz FSB	396520-001
*	1.0 GB/667 MHz FSB	398038-001

Intel Pentium 4 Processors with alcohol pad and thermal grease

*	2.8 GHz/800 MHz FSB, 1MB cache, 521	394643-001
*	3.0 GHz/800 MHz FSB, 1MB cache, 531	394642-001
*	3.2 GHz/800 MHz FSB, 1MB cache, 541	394812-001
*	3.0 GHz/800 MHz FSB, 2MB cache, 630	392273-001
*	3.2 GHz/800 MHz FSB, 2MB cache, 640	384786-001
*	3.4 GHz/800 MHz FSB, 2MB cache, 650	384787-001
*	3.6 GHz/800 MHz FSB, 2MB cache, 660	392272-001
*	3.8 GHz/800 MHz FSB, 2MB cache, 670	392271-001

Intel Pentium D Processors with alcohol pad and thermal grease

*	2.8 GHz/800 MHz FSB, 2x1MB cache, 820	392419-001
---	---------------------------------------	------------

Intel Celeron D Processors with alcohol pad and thermal grease

*	2.66 GHz/533 MHz FSB, 256KB cache, 331	391940-001
*	2.8 GHz/533 MHz FSB, 256KB cache, 336	391941-001

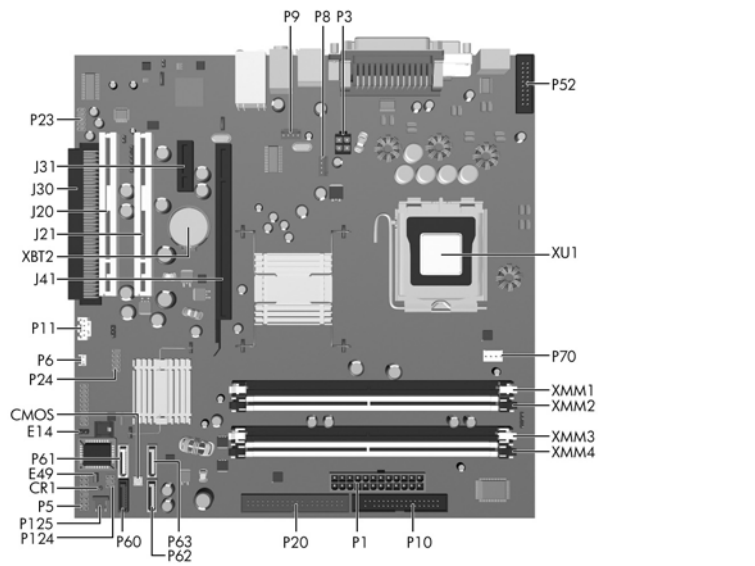
Other Cards

*	Intel Pro/1000 NIC	314901-005
*	ATI PCI-E DVI/S-Video graphics, 128 MB	361266-001
*	Quadro NVS 280 PCI graphics, 64 MB	351384-005
*	Quadro NVS 280 PCI-E graphics, 64 MB	365934-001
*	DVI ADD 2 graphics card	361265-001
*	PCI Modem, worldwide	361286-021
*	1394, FH bracket	361552-001

*Not shown

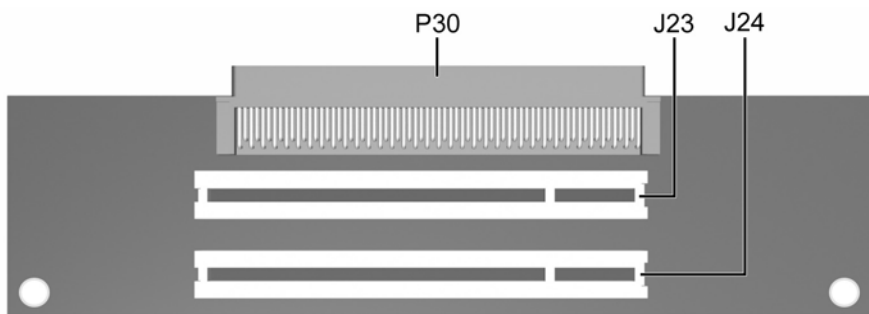
Miscellaneous Screw Kit (not illustrated)

Miscellaneous screw kit	393956-001
6-32x.250 TF, HI/TP W/SERR, 6 ea	
6-32x.187 Tamper-resistant, T15, 2 ea	
Plastite, Flathead, Phillips, 4 ea	
Plastite 8X5/16L, .185DX.03 SHLDR, 2 ea	



System Board Connectors and Jumpers (position of some untitled components may vary in location)

CMOS	CMOS button	P20	Primary IDE
CR1	5V_AUX LED	P23	Front audio
E14	Boot block	P24	Front panel USB
E49	Password jumper	P52	Serial port header
J20	PCI slot 1	P60	Primary Serial ATA (SATA) Port connector
J21	PCI slot 2	P61	Secondary Serial ATA (SATA) Port connector
J30	PCI slot extender	P62	Third Serial ATA (SATA) Port connector
J31	PCI Express slot x1	P63	Fourth Serial ATA (SATA) Port connector
J41	PCI Express slot x16	P70	CPU fan
P1	Main power (24 pin)	P124	Hood lock
P3	Processor 12V header	P125	Hood sensor
P5	Front panel	XBT2	Battery
P6	Internal chassis speaker	XMM1	Memory socket
P8	Chassis fan	XMM2	Memory socket
P9	Secondary chassis fan	XMM3	Memory socket
P10	Diskette drive	XMM4	Memory socket
P11	Aux audio in	XU1	Microprocessor socket



PCI Extender Card Connectors

J23	PCI slot 4	P30	Male expansion plug
J24	PCI slot 5		

System Hardware Interrupts

IRQ	System Function	IRQ	System Function
0	Timer Interrupt	8	Real-Time Clock
1	Keyboard	9	Unused
2	Interrupt Controller Cascade	10	Unused, available for PCI
3	Serial Port (COM B)	11	Unused, available for PCI
4	Serial Port (COM A)	12	Mouse
5	Unused, available for PCI	13	Coprocessor
6	Diskette Drive	14	Primary ATA (IDE) Controller
7	Parallel Port (LPT 1)		

Computer Diagnostic LEDs (on front of computer)

LED	Color	LED/Beep Activity	State/Message
Power	Green	On	(S0) Computer on
Power	Green	1 blink every 2 seconds	(S1) Suspend Mode
Power	Green	1 blink every 2 seconds	(S3) Suspend to RAM
Power	Clear	Off	(S4) Hibernation Mode
Power	Clear	Off	(S5) Computer off
Power	Red*	2 blinks 1 second apart	CPU thermal shutdown
Power	Red*	3 blinks 1 second apart	CPU not installed
Power	Red*	4 blinks 1 second apart	Power supply overload (crow bar)
Power	Red*	5 blinks 1 second apart	Defective or missing memory
Power	Red*	6 blinks 1 second apart	Defective or missing graphics
Power	Red*	7 blinks 1 second apart	System board failure (detected prior to video)
Power	Red*	8 blinks 1 second apart	Invalid ROM based on checksum
Power	Red*	9 blinks 1 second apart	System not fetching code
Power	Red*	10 blinks 1 second apart	System hang while loading an option ROM
Hard Drive	Green	Blinking	Hard drive activity

*Blinking codes are repeated after a 2 second pause. Beeps stop after fifth iteration but LEDs continue until problem is resolved.

Clearing CMOS

The computer's configuration (CMOS) may occasionally be corrupted. If it is, it is necessary to clear the CMOS memory using switch SW50.

To clear and reset the configuration, perform the following procedure:

1. Turn off the computer and any external devices, and disconnect the power cord from the power outlet.

CAUTION: The power cord must be disconnected from the power source before pushing the Clear CMOS Button (NOTE: All LEDs on the board should be OFF). Failure to do so may damage the system board.

2. Remove the access panel.
3. Press the CMOS button located on the system board.
4. Replace the access panel.
5. Turn the computer on and run Computer Setup (F10 Setup Utility) to reconfigure the system.

Disabling or Clearing the Power-On and Setup Passwords

1. Turn off the computer and any external devices, and disconnect the power cord from the power outlet.

2. Remove the access panel.

3. Locate the header and jumper labeled E49.

4. Remove the jumper from pins 1 and 2. Place the jumper over pin 2 only, in order to avoid losing it.

5. Replace the access panel.

6. Plug in the computer and turn on power. Allow the operating system to start.

NOTE: Placing the jumper on pin 2 clears the current passwords and disables the password features.

7. To re-enable the password features, repeat steps 1-3, then replace the jumper on pins 1 and 2.

8. Repeat steps 5-6, then establish new passwords.

Refer to the *Desktop Management Guide* and the *Computer Setup (F10) Utility Guide* for instructions on establishing new passwords.

Computer Setup (F10) Utility Features (not all features may be available)

File	System Information About Set Time and date	Flash system ROM Replicated Setup Default Setup	Apply Defaults and Exit Ignore Changes and Exit Save Changes and Exit
Storage	Device Configuration Storage Options	DPS Self-Test Boot Order	
Security	Smart Card Options Setup Password Power-On Password Password Options	Smart Cover Embedded Security Device Security Network Service Boot	System IDs Drivelock Security OS Security Data Execution Prevention
Power	OS Power Management	Hardware Power Management	Thermal
Advanced	Power-On Options Execute Memory Test BIOS Power On	Onboard Devices PCI Devices PCI VGA Configuration	Bus Options Device Options

Note: See the *Computer Setup (F10) Utility Guide on the Documentation and Diagnostics CD*.