

# **HP Personal Media Drive User's Guide**

The only warranties for HP products and services are set forth in the express warranty statements accompanying such products and services. Nothing herein should be construed as constituting an additional warranty. HP shall not be liable for technical or editorial errors or omissions contained herein.

HP assumes no responsibility for the use or reliability of its software on equipment that is not furnished by HP.

This document contains proprietary information that is protected by copyright. No part of this document may be photocopied, reproduced, or translated to another language without the prior written consent of HP.

Hewlett-Packard Company  
P.O. Box 4010  
Cupertino, CA 95015-4010  
USA

Copyright © 2004, 2005 Hewlett-Packard Development Company, L.P.

HP supports lawful use of technology and does not endorse or encourage the use of our products for purposes other than those permitted by copyright law.

The information in this document is subject to change without notice.

# Table of Contents

<b>Introduction .....</b>	<b>1</b>
Safe Handling Information .....	1
Care and Handling of Your HP Personal Media Drive .....	1
HP Personal Media Drive Components .....	2
HP Personal Media Drive Features .....	3
<b>System Requirements.....</b>	<b>3</b>
<b>Getting Started with Your HP Personal Media Drive .....</b>	<b>4</b>
Installing Drivers and Software from the Installation CD .....	4
Inserting the HP Personal Media Drive into HP PCs with Integrated Drive Bay .....	4
Drive Indicators and Connectors.....	5
Connecting the Drive to a PC without a Drive Bay .....	5
Locating the Drive .....	6
Disconnecting the Drive Safely .....	6
<b>Formatting the Drive for Windows .....</b>	<b>7</b>
Reformatting the Drive with a FAT32 File System.....	7
<b>Using Your HP Personal Media Drive Software.....</b>	<b>8</b>
Using Sonic BackUp MyPC SE for HP Software .....	8
Restoring Damaged or Erased Files.....	9
Transferring Files to Another PC Manually .....	9
Playing Games.....	10
Using Your HP Personal Media Drive with a HP Media Center PC .....	10
Using the Security Lock.....	10
<b>HP Personal Media Drive Specifications.....</b>	<b>10</b>
<b>Troubleshooting .....</b>	<b>11</b>
<b>Getting Help .....</b>	<b>11</b>



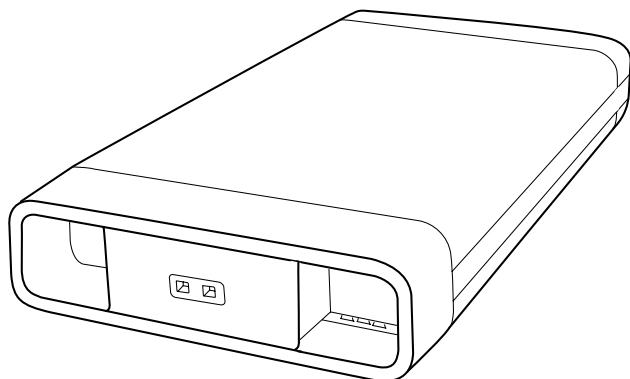
## Introduction

Thank you for selecting the HP Personal Media Drive. This drive is an external hard disk drive with a large capacity designed to quickly and easily store and transfer media files such as digital photos, music, video, and other important files.

The HP Personal Media Drive connects and disconnects easily from a USB 2.0 connector on the front or back of most PCs.

For some HP PCs, the HP Personal Media Drive is designed to fit inside a horizontal or vertical drive bay.

Your HP Personal Media Drive comes with backup software (select models only) that is compatible with most Windows® operating systems.



## Safe Handling Information

The HP Personal Media Drive is designed to be used as a stationary unit. It is very important that you handle this drive carefully to avoid hardware damage and data loss. Please read the following warnings before attempting to install, use, or move your HP Personal Media Drive.

## Care and Handling of Your HP Personal Media Drive



**WARNING:** The warnings for the care and handling of the HP Personal Media Drive are listed below.

- Do not move the drive while it is operating to avoid hardware damage and potential data loss. You can safely move your drive only when you have properly disconnected and powered off the drive through the operating system.
- When running for long periods of time, the aluminum case of the Personal Media Drive may become very warm. This is part of the HP Personal Media Drive's advanced design and is completely normal.
- The built-in, low-noise fan is designed to automatically turn on at pre-set temperatures. If you are using the HP Personal Media Drive connected externally to your PC, please place the drive in a well-ventilated area.
- Do not move the PC with the HP Personal Media Drive attached to a USB port, or while inserted into specially designed HP PC drive bays.
- Incorrect handling, such as dropping the drive, can cause data loss and invalidates the warranty.
- Do not attempt to open the drive's case. This action voids the warranty.
- Do not set the drive on its side, as it may fall over and cause damage.
- Do not remove any cables or power cords without properly disconnecting the drive through the operating system.
- Do not set any liquids or drinks on the drive. Liquids can damage the internal electronics.
- Do not block airflow around the drive while the drive is turned on.
- Do not stack anything on top of the drive; this can overheat and damage your drive.

## HP Personal Media Drive Components

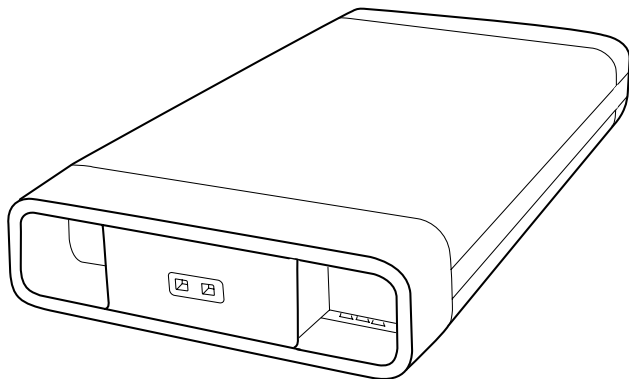
Your HP Personal Media Drive components are listed below:

- A** Pre-formatted USB 2.0 external hard disk drive
- B** Quick setup document  
*Warranty and Support Guide*  
(not shown)
- C** Installation CD that includes:
  - User's Guide
  - Read Me file
  - Adobe Acrobat Reader
  - Sonic BackUp MyPC SE
- D** 1.8 meter (6 foot) USB 2.0 cable
- E** Power adapter
- F** Power cable

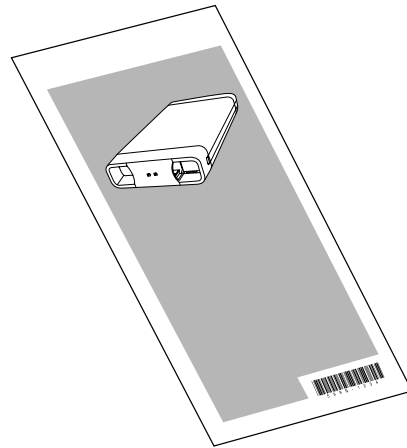
---

**NOTE:** The Sonic BackUp MyPC SE for HP software program is included with select models only.

---



**A**



**B**



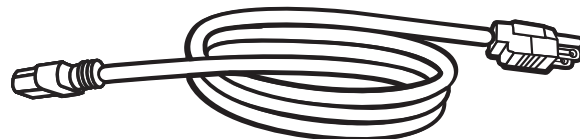
**C**



**D**



**E**



**F**

## HP Personal Media Drive Features

---



**WARNING:** To avoid hardware damage and data loss, please read “Safe Handling Information” at the beginning of this document before attempting to install or use the HP Personal Media Drive.

---

Your HP Personal Media Drive is a pre-formatted, portable, external hard disk drive that allows you to quickly and easily store a large number of digital music, photo, video, recorded TV, gaming, or other data files.

Some HP PCs include a specially designed drive bay where you can install and remove the HP Personal Media Drive without turning off the PC and without using any external USB or power cables.

The HP Personal Media Drive has the following features:

**Plug and Play installation with most PCs**

Uses USB 2.0 for high-speed transfer of data, with backward compatibility to USB 1.1.

**Large storage capacity**

The large storage capacity allows you to easily store files from your digital cameras, digital video camcorders, and MP3 players.

**Integrated software (select models only)**

Helps you back up and manage a large number of files. Perform system backups for added data security and quickly transfer data between PCs.

### Compatibility

Works with most PCs, notebooks, and any Plug and Play ready port so you may easily share files between PCs. Compatible with Kensington® and other brand security locking cables (not included).

### Compact design

The HP Personal Media Drive is lightweight and small.

### Warm swappable convenience

When disconnecting the drive, you do not need to turn off the PC.

### Pre-formatted

This drive is pre-formatted in NTFS.

---

**NOTE:** To disconnect your drive, see “Disconnecting the Drive Safely” on page 6.

---

**NOTE:** Your drive displays a drive capacity that is slightly less than the capacity stated on the box. This is normal.

---

## System Requirements

The following are the system minimum requirements:

- Windows ME, XP Home or Professional, or Windows XP Media Center Edition
- CD-ROM or DVD-ROM drive
- 32 MB RAM or more as required by Windows
- Available USB 1.1 or 2.0 port, depending on model

## Getting Started with Your HP Personal Media Drive

You can get started with your HP Personal Media Drive in a few easy steps. First insert the installation CD to install the software for the HP Personal Media Drive, and then connect the power cable and USB cable. Refer to the instructions that follow.

### Installing Drivers and Software from the Installation CD

---

**NOTE:** Only install the applications that are compatible with your language and your PC operating system.

---

To install HP Personal Media Drive drivers and software:

- 1 Insert the HP Personal Media Drive Installation CD. A menu of installation options appears when the PC recognizes the CD.
- 2 Select the items you want to install by placing a check in the check box next to the software.
- 3 Click **Install**, and then follow the onscreen instructions to install the software program. The programs are installed automatically.
- 4 After installing the software, restart the PC.

If available, read the *NEWUPDATE* file for any updates and changes to the software programs.

## Inserting the HP Personal Media Drive into HP PCs with Integrated Drive Bay

The HP Personal Media Drive is designed to work with most PCs as an external drive that is connected using a USB cable, but it also can be inserted into specially designed HP PCs. These PCs have a special drive bay that includes an internal USB port and power cable that connects to the HP Personal Media Drive. The HP Personal Media Drive can be easily inserted and removed from the hard drive bay without turning off the PC, sometimes referred to as warm swappable.

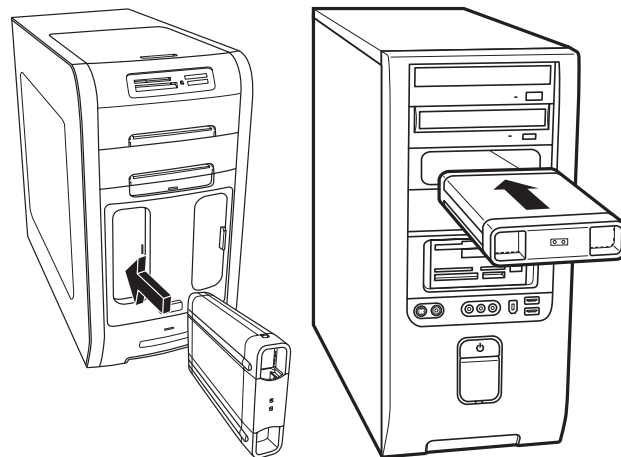
Some HP PCs have vertically oriented drive bays and some have horizontally oriented drive bays; both accommodate your HP Personal Media Drive.



**WARNING:** Do not move the PC with the HP Personal Media Drive inserted in the bay or connected to a USB port on the PC. This can cause damage to the drive and data loss.

**Before moving the PC, it should be turned off and the HP Personal Media Drive should be removed or disconnected safely.**

---





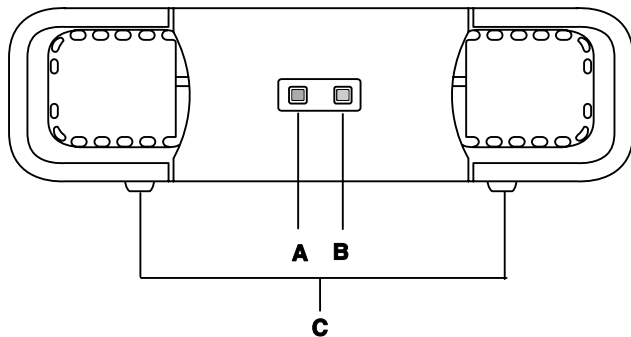
To insert the HP Personal Media Drive into a specially designed HP PC:

- 1 Line up the ridges on the bottom of the drive with the two slots on the correct side of the PC drive bay. Do not force the drive into the bay; it should slide easily into the bay.
- 2 Slide the drive all the way into the drive bay until the drive is firmly connected to the internal power and USB cables. When the PC is turned on, and the drive is inserted correctly, the power LED on the front of the drive is lit.

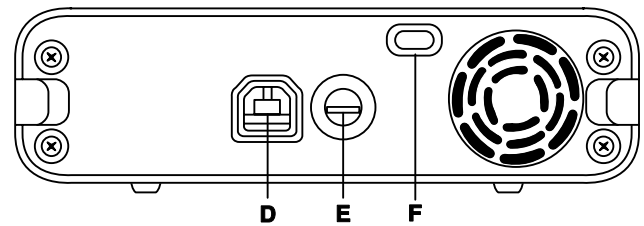
## Drive Indicators and Connectors

The HP Personal Media Drive comes with two LED indicators, a USB connector, a power connector, and a security lock connector.

### Front of HP Personal Media Drive



### Back of HP Personal Media Drive



- A** Drive activity LED indicator
- B** Power on LED
- C** HP Personal Media Drive guide rails/feet
- D** USB 2.0 connector (USB 1.1 backward compatible)
- E** DC power connector
- F** Kensington security locking slot

---

**NOTE:** The Kensington security lock is sold separately.

---

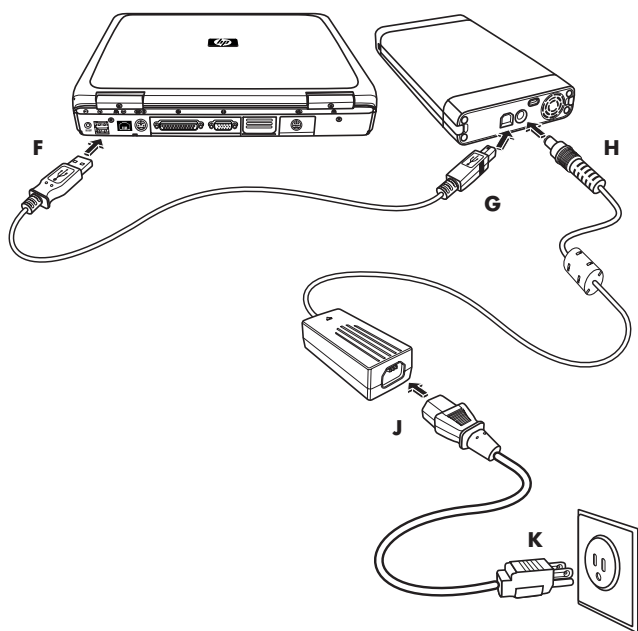
## Connecting the Drive to a PC without a Drive Bay

The HP Personal Media Drive is designed to work with most PCs as an external hard disk drive that you connect using a USB 2.0 cable.

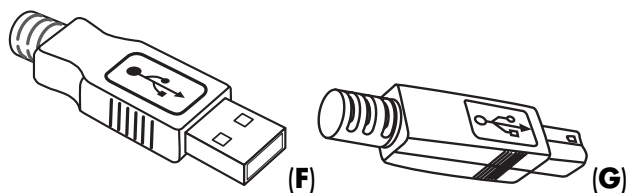
To connect the drive:

- 1 Make sure you have installed the software and drivers on the HP Personal Media Drive installation CD. See "Installing Drivers and Software from the Installation CD" on page 4.
- 2 Plug the round power cable from the power adapter into the back of the HP Personal Media Drive (**H**).
- 3 Plug power adapter into the power cable (**J**), and then plug the power cable into the wall (**K**).

#### 4 Turn on the PC.



- 5 Plug the rectangular end of the USB 2.0 cable (F) into an available USB port on your PC. Plug the square end of the USB 2.0 cable (G) into the USB connector on the back of the drive.



**NOTE:** The PC may take several seconds to recognize the HP Personal Media Drive.

## Locating the Drive

When you plug the drive into a USB 2.0 connector, the operating system automatically assigns a hard disk drive letter to it. The assigned letter depends on other storage devices connected to your PC.

The default volume label of this drive is *HP Personal Media Drive*. You can rename the drive in the My Computer window by right-clicking the drive, selecting **Rename**, and then typing in a new name. HP recommends renaming a drive if you have more than one HP Personal Media Drive.

To locate your HP Personal Media Drive, open My Computer for a list of all of the internal and external drives. For more information on opening My Computer, refer to the Help files in your operating system or the documentation that came with your PC.

## Disconnecting the Drive Safely



**CAUTION:** To avoid hardware damage and data loss, always disconnect your HP Personal Media Drive safely when it is not saving or transferring data.

- 1 Double-click the *Safely Remove Hardware* icon in the system tray at the bottom of the desktop. The Safely Remove Hardware window opens.



**NOTE:** For some PCs, this may be called the Unplug Hardware or Eject Hardware icon.

- 2 Double-click **USB Mass Storage Device**. This name may appear differently for some PCs.

**NOTE:** USB Mass Storage Device may be listed twice. One may contain a memory card reader or other mass storage drives. Look for the label of this drive, which is *HP Personal Media Drive*.

- 3 Select your device, and then click **OK**. A *Safe to Remove Hardware* message appears in the System tray at the bottom of your desktop letting you know that the device is safe to disconnect.
- 4 Click **Stop** to make sure the HP Personal Media Drive is not active, and then click **Close**.
- 5 Disconnect the drive from the PC.

---

**NOTE:** If your PC does not allow you to disconnect the drive safely, you may need to close all applications and documents, and then try again to disconnect the drive.

---

## Formatting the Drive for Windows



**CAUTION: Reformatting a hard disk drive destroys all data on the drive. If you have data that you want to keep, back up the data before reformatting the drive.**

---

Your HP Personal Media Drive was formatted at the factory for an NTFS file system. This file system supports large media files that are larger than 4 GB.

Some PCs use the FAT32 file system. FAT32 is a file system that organizes files on the PC. This system is standard for Windows ME and is supported under Windows XP.

With FAT32, a single file is limited in size to 4 GB. This may create a problem when you are creating backup files. If you need to use this drive on a PC that is formatted with FAT32, you will need to reformat the drive.

If your PC has Windows ME and you upgrade to Windows XP, your PC is automatically reformatted to use an NTFS file system.

## Reformatting the Drive with a FAT32 File System

If you have an older operating system such as Windows ME, you may need to reformat the HP Personal Media Drive with a FAT32 file system.

If your BIOS is older, it only supports 4 to 16 gigabyte partitions. If you do not want your drive partitioned, go to the BIOS manufacturer's Web site to download a BIOS upgrade.

To reformat the drive with FAT32 on a Windows ME system:

- 1 Make sure the HP Personal Media Drive is NOT connected to the PC.
- 2 Click **Start** on the taskbar.
- 3 Choose **Settings** and click **Control Panel**.
- 4 Double-click **System**.
- 5 Click the **Device Manager** tab.
- 6 Double-click **Disk drives** to open the list of drives connected to your system.
- 7 Write down the drive(s) listed so you'll be able to correctly identify the new drive when it appears.
- 8 Close the System Properties window and the Control Panel window.
- 9 Connect the HP Personal Media Drive to the PC. See "Connecting the Drive to a PC without a Drive Bay" on page 5.
- 10 Click **Start** on the taskbar.
- 11 Choose **Settings** and click **Control Panel**.
- 12 Double-click **System**.
- 13 Click the **Device Manager** tab.
- 14 Double-click **Disk drives** to open the list of drives connected to your system.
- 15 Select the new drive from the *Disk drive* list. The new drive is the drive that was not listed before in step 6.
- 16 Click **Properties**.
- 17 Click the **Settings** tab.
- 18 Make sure that the **Removable** check box has a check mark next to it. Click it if it does not.
- 19 Click **OK**.
- 20 Click **Close**.
- 21 Restart your system.

To format your HP Personal Media Drive disk:

- 1 Double-click the **My Computer** icon.
- 2 Click the **Removable Disk** icon. A message appears asking you if you want to format the disk.
- 3 Click **Yes**.
- 4 In the Format window, in the Format type area, click **Full**. You can also type a label for the drive at this time if you choose.
- 5 Click **Start**.
- 6 Click **OK**. Formatting can take longer than 60 minutes. Do not disconnect the drive during the procedure.
- 7 When formatting is complete, click **Close** and then click **OK**.

## Using Your HP Personal Media Drive Software

Once installed, you can use the HP Personal Media Drive the same way you use the other drives on your PC. You can move or copy files or folders from one drive to another. Because of the capacity of this drive, you can save large media files such as video clips, digital images, and hard disk drive backup files.

---

**NOTE:** Sonic BackUp MyPC SE for HP software is included with select models only.

---

## Using Sonic BackUp MyPC SE for HP Software

---

**NOTE:** You must be logged on as an administrator to run a backup with Sonic BackUp MyPC SE software.

---

With Sonic BackUp MyPC SE for HP software, you can:

- Store a large capacity of digital media files onto your HP Personal Media Drive.
- Easily schedule compressed backups of your most important files with incremental saves.

- Back up all or selected files and folders from a local drive.
- Back up all selected files or back up new and changed files.
- Enable backup of multiple PCs from different locations.

---

**NOTE:** To start scheduled backups, you must close the Sonic BackUp MyPC SE program.

---

## Backing Up a Drive or Specified Files

To back up a drive on your PC:

- 1 Make sure the Sonic BackUp MyPC SE for HP software that came on the included CD is installed. See "Installing Drivers and Software from the Installation CD" on page 4.
- 2 Click **Start** on the taskbar.
- 3 Choose **All Programs**, choose **Sonic, Backup MyPC**, and then click **Backup MyPC**.
- 4 Select the **Backup Wizard**, and then click **OK**.
- 5 Follow onscreen instructions to complete backing up your files.
- 6 After the backup is finished, click **OK** and then click **OK** again to close the backup process window.

To back up specified files:

- 1 Click **Start** on the taskbar.
- 2 Choose **All Programs**, choose **Sonic, Backup MyPC**, and then click **Backup MyPC**.
- 3 Select a blank backup job, and then click **OK**.
- 4 Select the drive or drives you want to back up by placing a check in the check box next to the drive letter.
- 5 Under *Where to back up*, click the **browse** button (folder icon at the bottom of the window) to send your backup file to your drive. Select the drive letter associated with your HP Personal Media Drive, and then click **Open**.

- 6** Click the **Options** button to change your backup options such as compression, media, and names. Click **OK** when you have selected your options.
- 7** Click **Start** to begin your backup.
- 8** Click **Yes** to save your backup.
- 9** Type a title for your backup, and then click **Save**. Your files are prepared for backup to your drive.
- 10** Follow any onscreen instructions.
- 11** After the backup is finished, click **OK** and then click **OK** again to close the backup process window.

You can also click the **Help** menu, and then select **Backup MyPC Help** for more information about this program.

## Restoring Damaged or Erased Files

With Sonic BackUp MyPC SE software, you can schedule a complete disaster recovery backup without having to re-install Windows or any other software programs. An integrated disaster recovery process starts the PC from a customized set of backup media (Disaster Recovery Set), restores the operating system, and then recovers your data to the state it was in when the Disaster Recovery Set was created.

Before performing a disaster recovery, you may want to try other options. For example, if the problem appears to be a Windows system problem, try to recover by following the steps in the documentation that came with your PC.

If you have a backup of your files, you can also re-install Windows, reinstall your backup software, and then selectively restore the rest of the files you need. This last option may be the best choice if your hardware configuration has changed since you created your Disaster Recovery Set.

To restore files on your PC:

- 1** Insert the installation CD that came with your HP Personal Media Drive, and then follow the onscreen instructions to install Sonic BackUp MyPC SE.
- 2** Restart your PC.
- 3** Click **Start** on the taskbar.
- 4** Choose **All Programs**, choose **Sonic, Backup MyPC**, and then click **Backup MyPC**.
- 5** Select a blank backup job, and then click **OK**.
- 6** Click the **Tools** menu, and then click **Restore Wizard**.
- 7** Follow the onscreen instructions.

You can click the **Help** menu, and then select **Backup MyPC Help** for more information about this program.

## Transferring Files to Another PC Manually

You can transfer your PC profile information, which includes how your PC looks and feels as well as the personal files such as photos, music, or video you have created.

To transfer your files manually:

- 1** Connect your HP Personal Media Drive to the PC.
- 2** Select your files and then drag and drop them to your HP Personal Media Drive in My Computer.
- 3** Disconnect your HP Personal Media Drive and then connect it to another PC.
- 4** Select your files and then drag and drop them to the other hard disk drive.

## Playing Games

CD-ROM games typically run faster when they are installed on a hard disk drive than when they run on a CD. You can use your HP Personal Media Drive to store and play CD-ROM games.

## Using Your HP Personal Media Drive with a HP Media Center PC

Some versions of the HP Media Center PCs have a dedicated drive bay for your HP Personal Media Drive. For more information, refer to the user guide that came with your HP Media Center PC. For information on using your HP Personal Media Drive with an older version of HP Media Center PC, go to <http://www.hp.com/support> and enter the model number of your HP Media Center PC or HP Personal Media Drive.

## Using the Security Lock

Your drive includes a security locking slot on the back of the drive. The security locking slot is compatible with most security locking cables, including those offered by Kensington.

These security cables are designed to prevent unauthorized removal of the drive by locking it to an unmovable object.

For more information about Kensington locking cables, you can go to:

<http://www.kensington.com>

## HP Personal Media Drive Specifications

Category	Specifications
Supported operating systems	Windows ME, XP Home, XP Professional, and Media Center Edition
USB format	USB 2.0 (USB 1.1 backward compatible)
Storage capacity	Varies depending on model
Special features	<ul style="list-style-type: none"><li>• Warm swappable</li><li>• High speed USB 2.0 data transfer</li><li>• Power and drive activity LED indicators</li><li>• Kensington security lock ready</li><li>• Backup software (select models only)</li></ul>
Rotational speed	7,200 RPM
Data transfer rate	USB 1.1 = 12 MBps* (megabytes per second) USB 2.0 = 480 MBps
Physical dimensions	Length: 213 mm (8.0 inches) Width: 119 mm (4.5 inches) Depth: 34 mm (1.4 inches) Weight: 1 to 1.5 lbs, depending on capacity
Power adapter	AC input voltage: 100–240 VAC AC input frequency: 50/60 Hz AC input current: 1A DC output voltage: 12 VDC DC output current: 2A Output connector: <ul style="list-style-type: none"><li>• Outer barrel diameter: 5.5 mm</li><li>• Inner pin diameter: 2 mm</li></ul>
Operating temperature	+5 to +35 degrees C
Non-operating temperature	–30 to +70 degrees C

\*Byte is an abbreviation for binary term, a unit of storage capable of holding a single character. On almost all modern computers, a byte is equal to 8 bits. Large amounts of memory are indicated in terms of kilobytes (1,024 bytes), megabytes (1,048,576 bytes), and gigabytes (1,073,741,824 bytes).

# Troubleshooting

## Microsoft updates

Make sure you have the latest Microsoft operating system service packs and other Windows updates installed on your system before you try to troubleshoot a drive problem. These service packs are issued to fix bugs, add drivers, and enhance the security features of your system. See <http://support.microsoft.com> for details about how to install service packs and Windows updates in your system. Contact Microsoft Customer Service for information about obtaining these system enhancements if you don't have Internet access.

## Drive does not appear on my PC

Try the following solutions in the order listed:

- 1 Check to see if the drive is on. The power LED on the front of the drive and the light on the power adapter should be lit.
- 2 Make sure the power adapter is securely plugged into the drive and into a power outlet. If the drive is plugged into a power strip, try plugging it directly into the wall outlet.
- 3 Check that the USB cable is securely and properly connected to the drive and the USB connector on the PC.
- 4 While the PC is turned on, unplug the USB cable. Wait 10 seconds and then reconnect the USB cable.
- 5 See if the PC is recognizing the USB port you are using by checking in the Device Manager window. See the documentation that came with your PC for more information.

## I got a message that I have a high-speed device connected to a low-speed port (Windows XP)

This is normal. Windows XP displays a message that you have connected your USB 2.0 drive to a USB 1.1 port. You will not have the high-speed capabilities that you would have using a USB 2.0 port.

## I'm having data transfer performance problems with my USB 2.0 adapter card

Your HP Personal Media Drive runs as fast as the host adapter card allows (up to the maximum burst rate of 480 MB per second). If you are having performance issues, make sure that the USB 2.0 card drivers are the most current available and are installed properly.

## Software does not work or has stopped working

Reinstall the software. See "Installing Drivers and Software from the Installation CD" on page 4.

## Write Cache Enable Does Not Stay Enabled

For protection of your data, Write Cache Enable is turned off with the HP Personal Media Drive. For more information, go to <http://www.hp.com/support>

## Administrator privilege for installing software

Depending on your operating system, you may need to be logged on as the Administrator to install software. See the Windows Help files or the documentation that came with your PC.

## Getting Help

For additional help with your drive, its installation, and the software, contact one of the following:

### Web support

- For the latest updates and information about your HP Personal Media Drive, you can go to the HP Support Web site at:  
<http://www.hp.com/support>

### Other support

- For technical support numbers and warranty information, refer to the warranty and support documentation that came with this drive.
- Refer to the Help menu in the Sonic BackUp MyPC SE software program for more information about the software.

