

HP ProLiant

DL100 G2 Storage Server

installation instructions



This document is for the person who installs, administers, and troubleshoots servers and storage systems. HP assumes that you are qualified in servicing computer equipment, and trained in recognizing hazards in products with hazardous energy levels.

Operating System

The HP ProLiant DL100 G2 Storage Server is preloaded with the Windows® Storage Server 2003 operating system. Prior to power up, deployment instructions found in the *HP ProLiant Storage Server user guide* should be followed to enable the successful configuration of the storage server.

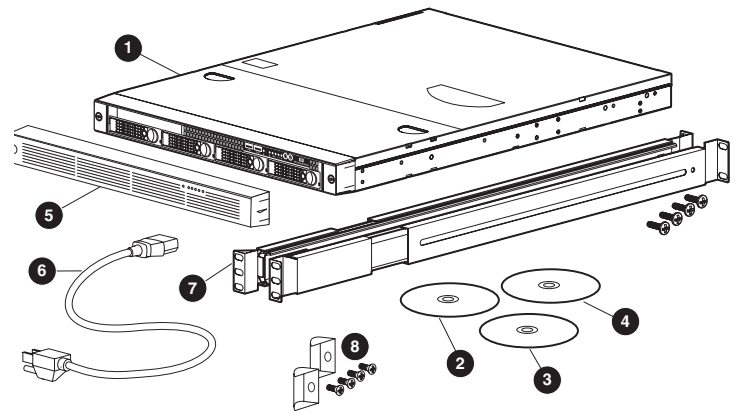
Product Documentation

<i>Installation Instructions</i>	Rack installation instructions
<i>User Guide</i>	Requirements and configuration options
<i>Administration Guide</i>	Provides administrative and procedural instructions to manage the storage server
<i>Documentation CD</i>	Contains electronic versions of: <ul style="list-style-type: none">■ Administration guide■ User guide■ Rack installation instructions
HP Warranty fulfillment document	Provides instructions to obtain a printed warranty
HP <i>Important Safety Information</i> booklet	Safety information for HP storage, power, networking and rack products

© Copyright 2005 Hewlett-Packard Development Company, L.P.
Windows® is a U.S. registered trademark of Microsoft Corporation.
Third edition September 2005
Product names mentioned herein may be trademarks of their respective companies as reflected by an associated footnote.
The information in this document is subject to change without notice.
www.hp.com



Contents



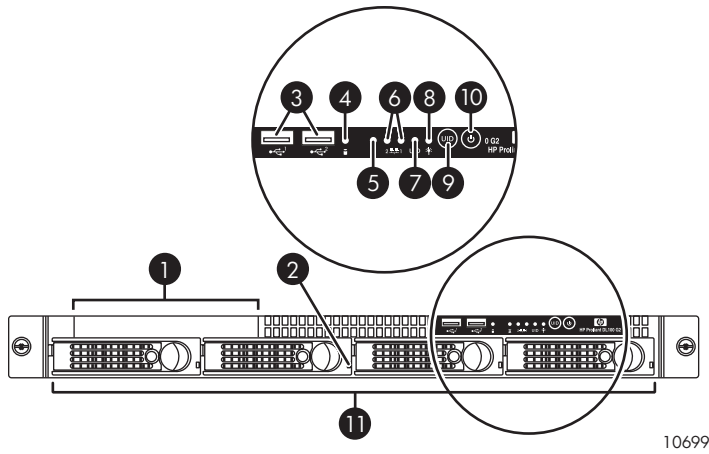
5200a

- 1 DL100 G2 Storage Server
- 2 Documentation CD
- 3 Quick Restore CD
- 4 Service Release CD
- 5 Bezel
- 6 Power cord
- 7 Slide rail assembly¹
- 8 Thumbscrew brackets and screws



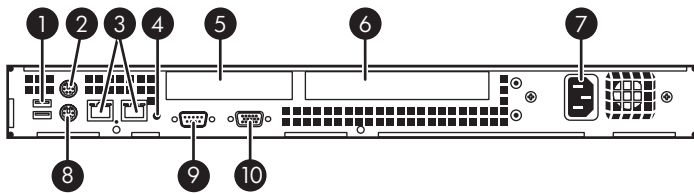
* 3 7 2 0 1 7 - 0 0 3 *

Front and Rear Views



10699

- 1 Slim DVD-ROM
- 2 Individual HDD status LED
- 3 2 USB ports
- 4 Overall HDD activity LED
- 5 Overall HDD fault LED
- 6 NIC LEDs
- 7 UID LED
- 8 Power LED
- 9 UID button
- 10 Power button
- 11 HDD bays (0-3)



10700

- 1 Dual USB port
- 2 PS/2 mouse port
- 3 NIC connectors (RJ45)(1-2)
- 4 UID LED
- 5 Low profile, half length PCI-X slot
- 6 Full height, full length PCI-X slot
- 7 AC power connector
- 8 PS/2 keyboard port
- 9 Serial port
- 10 D-sub VGA port

Warnings and Cautions

⚠ WARNING! Before you begin, make sure that the rack is sufficiently stable. If provided, lower the rack leveler feet and make sure any required stabilizers are installed. If provided, extend the rack anti-tip device. Failure to extend the anti-tip device could result in personal injury or damage if the rack tips over.

⚠ CAUTION: Make sure that the rack and all equipment mounted in the rack have a reliable ground connection. Verify that the total current of the rack components does not exceed the current rating of the power distribution unit or outlet receptacles.

Rack planning procedures

The rack resource kit ships with all HP branded or Compaq branded 9000, 10000, and H9 series racks. For more information on the content of each resource, see the rack resource kit documentation.

If you intend to deploy and configure multiple servers in a single rack, refer to the white paper on high-density deployment at the following HP web site:

www.hp.com/products/servers/platforms

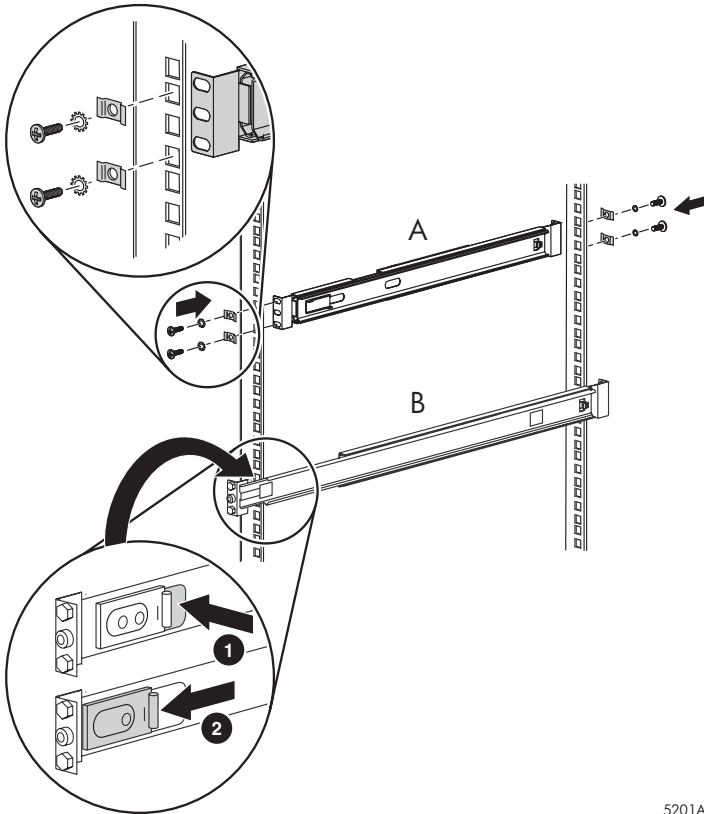
1. Slide rail assemblies vary. The click-and-snap assemblies hook onto the rack. The hardware-mounted assemblies attach to the rack using supplied screws, star washers, and locator washers.

1 Slide rail installation

NOTE: Depending on the rail kit provided, your slide rail assemblies may vary slightly from those in the following illustrations.

1. Install the slide rails to the rack as shown.

- For hardware-mounted rails (**A**), mount the rails onto the rack using the supplied screws and star washers. For square-hole racks, use the provided locator washers.
- For click-and-snap rails (**B**), hook the rails onto the rack. At both ends of the rail, push the outer spring latch **1**, and then slide the spring mechanism toward the rail end until the rail is secure **2**.

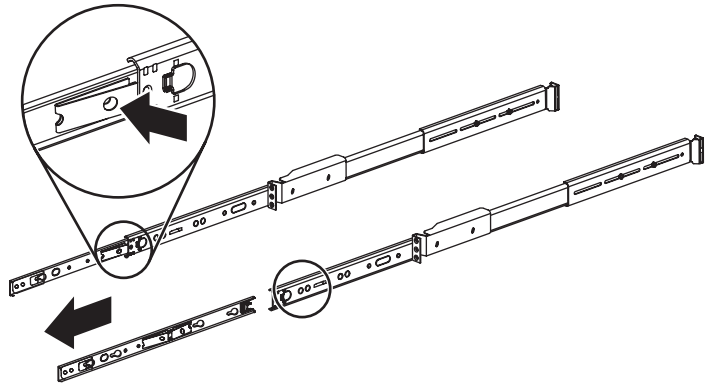


5201A

IMPORTANT: For hardware-mounted assemblies, HP recommends leaving the screws loose until the server is completely installed. This eases installation by preventing binding of the server in the rack.

2. Locate the inner slide rails:

- On hardware-mounted assemblies, remove the inner slide rails from the outer slide rails. To do so, extend the inner slide rails from the front of the rack until they lock in place. Then, press the inner slide lock down, as shown, and pull the inner slide rails straight out.

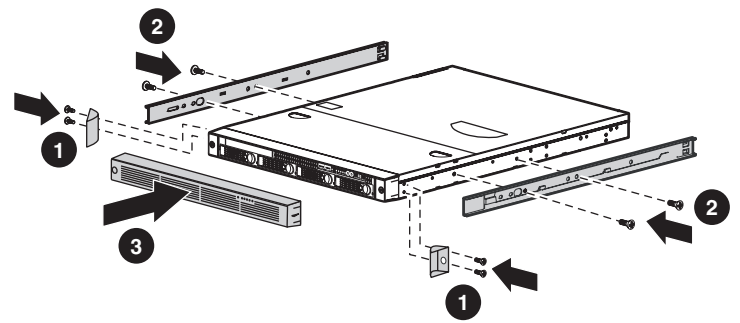


10685

- On click-and-snap assemblies, the inner slide rails arrive separately from the outer slide rails.

2 Server preparation

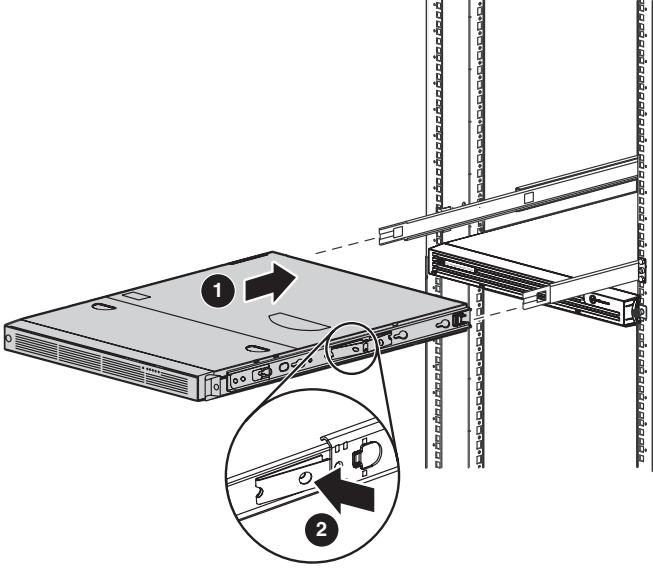
1. Attach the two thumbscrew brackets to the server using the supplied bracket screws, as shown **1**.
2. Attach a slide rail (lock facing out) to each side of the server, insert the slide rail screws through the slide rails, and then tighten, as shown **2**.
3. Attach the bezel **3** to the thumbscrew brackets, and then lock bezel to server (if desired).



5202

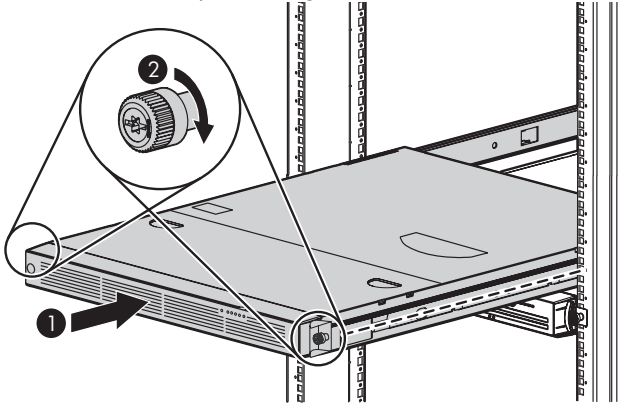
3 Server installation

1. With the outer slide rails extended a short distance from the rack, insert the inner slide rails (with the server attached) into the outer slide rails, as shown ❶. Press the inner slide lock ❷, and then push the server all the way into the rack, making sure that the inner slide rails lock into place.



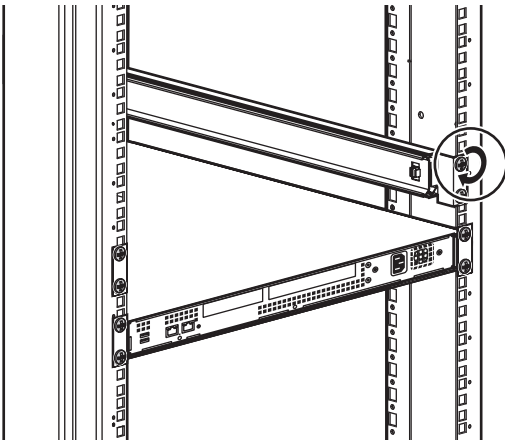
5203A

2. Slide the server in and out of the rack several times, allowing the rails to position properly ❶.
3. Lock the server in place using the thumbscrews ❷.



5204

4. If installing a hardware-mounted rail assembly, tighten all the slide rail screws.



5205

4 Cables

1. Install the cables.
2. Plug the power cord into the rack power strip.