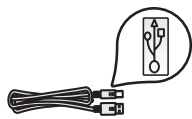


# Start Here

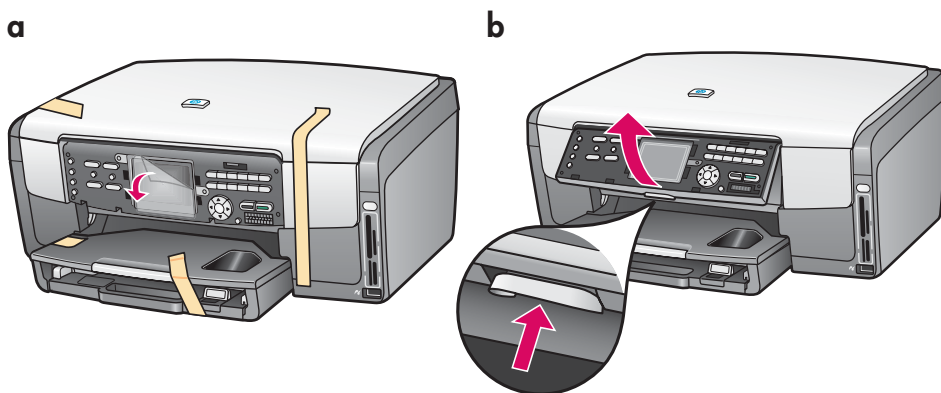
1



**USB cable users: Do not connect the USB cable until this guide instructs you to or the software may not install properly.**

Use this guide to set up the hardware and connect the HP All-in-One to either your computer or a working network. If you have problems during setup, see **Troubleshooting** later in the guide.

## 2 Remove all tape and lift display

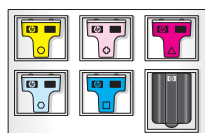


- a Remove all tape. For best viewing, remove the protective film from the color graphics display.
- b Lift the display.

## 3 Locate components



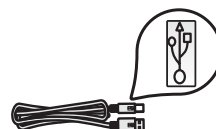
Windows CD



ink cartridges



power cord



USB cable\*



Ethernet cable\*



Macintosh CD



4 x 6 in  
(10 x 15 cm)  
photo paper



control panel  
faceplate (may  
be pre-attached)



User Guide on CD

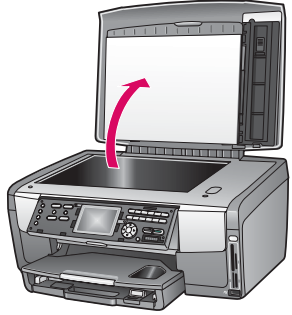
\* Purchased separately.

The contents of your box may differ.

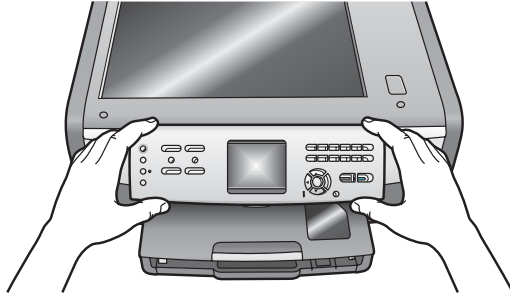
Additional network equipment specified later in guide.

## 4

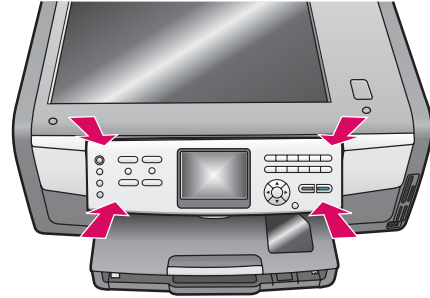
# Attach the control panel faceplate (if not attached)



**a** Lift the lid.



**b** Position the control panel faceplate over the buttons on the device.



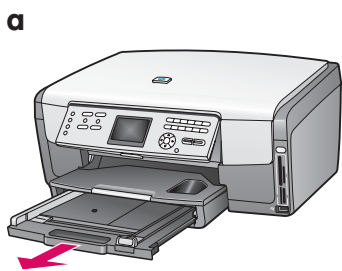
**c** Press down firmly on all edges of the overlay to secure it. Make sure all buttons are visible and not blocked.

The control panel faceplate must be attached for the HP All-in-One to work!

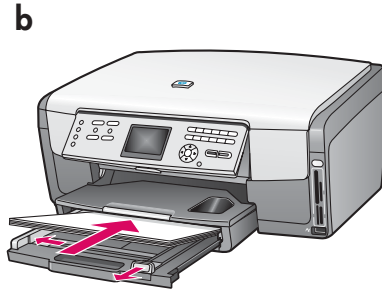
## 5

# Load paper trays

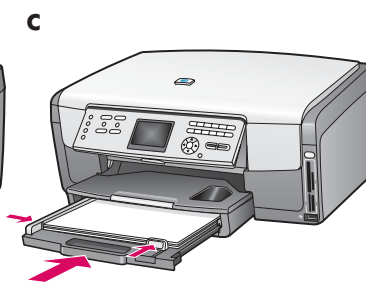
## Main tray:



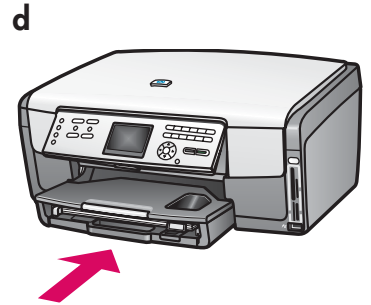
**a**



**b**



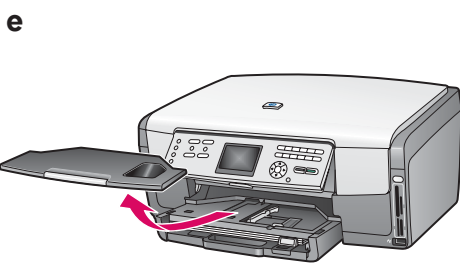
**c**



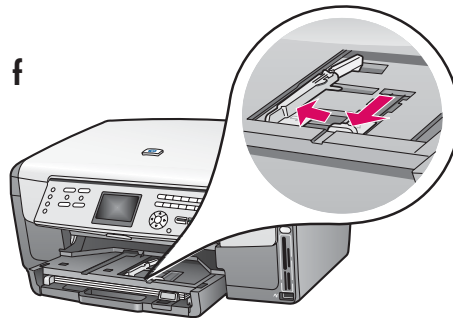
**d**

Load plain white paper in the bottom paper tray. Plain paper is needed for alignment.

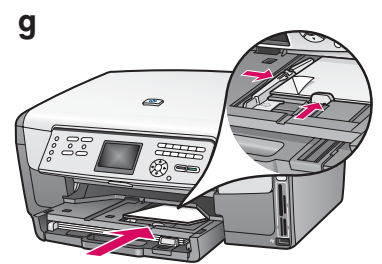
## Photo paper tray:



**e**

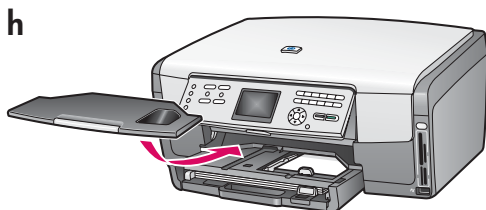


**f**

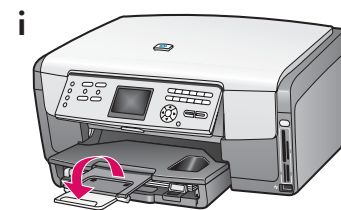


**g**

Load the 4 x 6 in (10 x 15 cm) photo paper with the glossy side down in the photo tray located underneath the output tray. (If paper is tabbed, make sure the tab is towards you.)



**h**

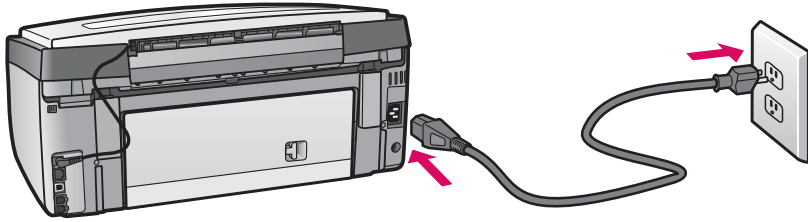


**i**



**Tip:** Pull out, and then flip the paper tray extender to catch pages.

## 6 Connect the power cord



**USB cable users:** Do not connect the USB cable until instructed later in this guide.

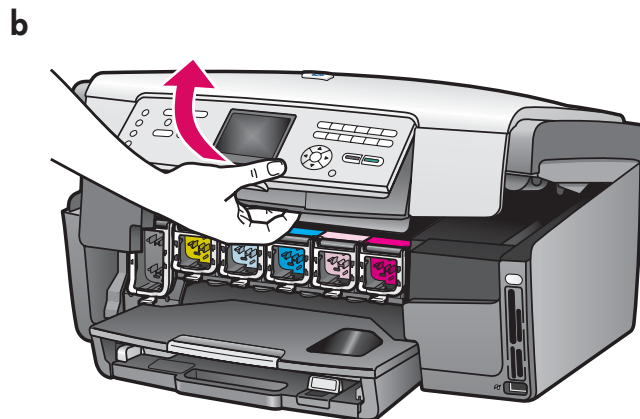
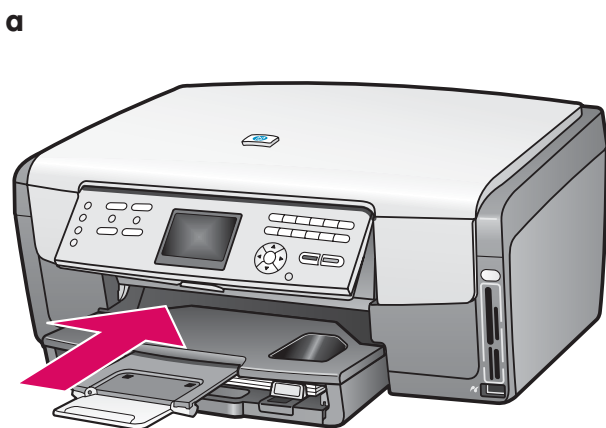
## 7 Press the On button and configure

On



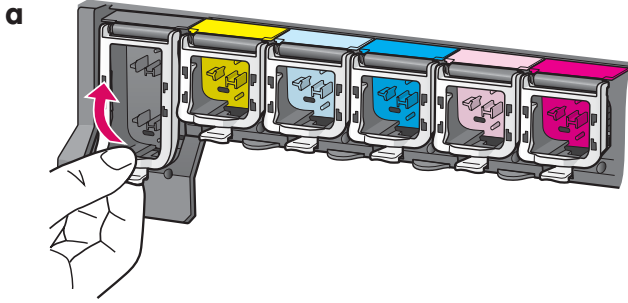
- After you press the **On** button, the blue light flashes, and then becomes solid. This may take up to a minute.
- Wait for the language prompt before continuing. Use the arrow keys to select your language, press **OK**, and then confirm. Use the arrow keys to select your country/region, press **OK**, and then confirm.

## 8 Open the access door



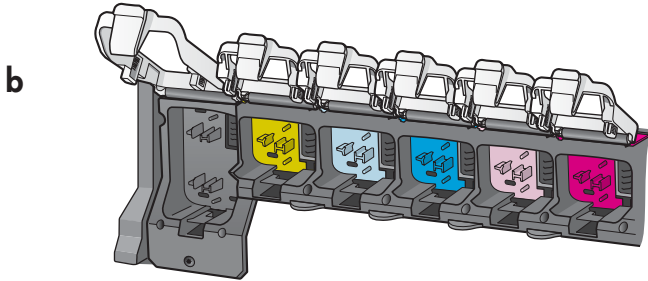
## 9

## Lift latches inside of the device



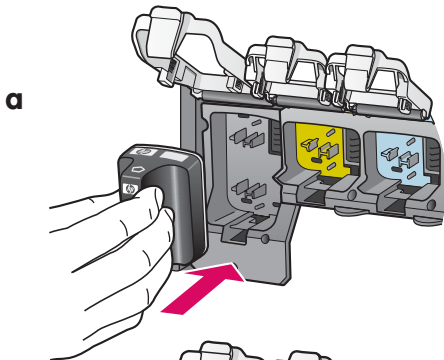
**a** Squeeze the bottom of each latch to release it, and then lift the latch.

**b** Lift all six latches.



## 10

## Insert all six ink cartridges

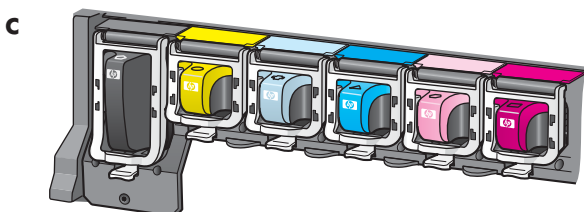
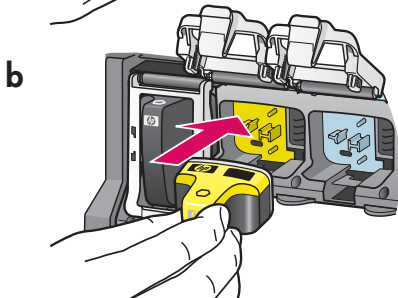


Match the color and pattern of the ink cartridge to the color and pattern on the print carriage.

**a** Push the black ink cartridge into the first slot on the left. Close the latch.

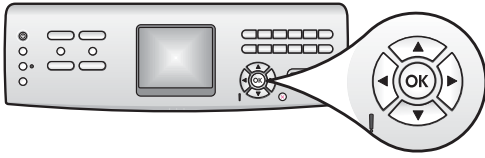
**b** Repeat with each of the color ink cartridges.

**c** Make sure each latch is secure.



# 11 Close the access door and follow the prompts

a



- a After you close the access door, a prompt appears to load plain white paper. Make sure plain white paper is loaded, and then press **OK** to start the process.

The device initializes the ink cartridges and aligns the printer. This takes approximately 5 minutes.

⚠ Do not disconnect or turn off the HP All-in-One during this time. You may hear the device making noises.

b



- b After the page prints, the printer is aligned. Check the color graphics display for the status, and then press **OK**. Recycle or discard the alignment page.

# 12 Turn on your computer



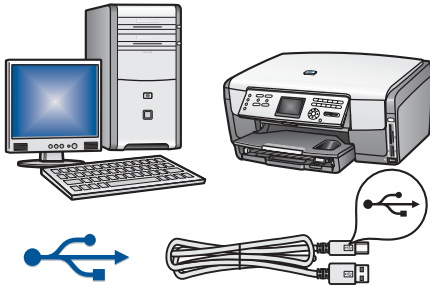
- a Turn on your computer, login if necessary, and then wait for the desktop to appear.

- b Close any open programs. Continue to the next page.

# 13

## Choose ONE connection type (A or B)

### A: USB Connection - Do not connect yet.

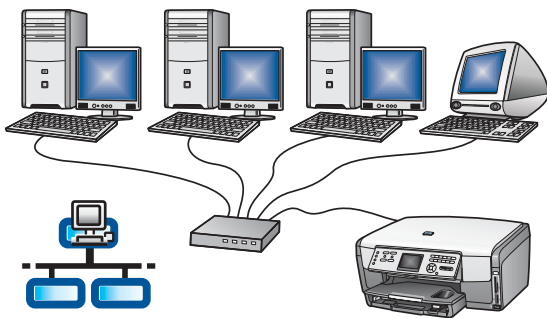


Use this connection type if you want to connect the device directly to one computer. **(Do not connect until the software instructs you to.)**

Equipment needed: USB cable.

**For a USB connection, go to Section A (page 7) for instructions.**

### B: Ethernet (Wired) Network



Use this connection type if you want an Ethernet cable connection between the device and your network.

Equipment needed: hub/router/switch and Ethernet cable.

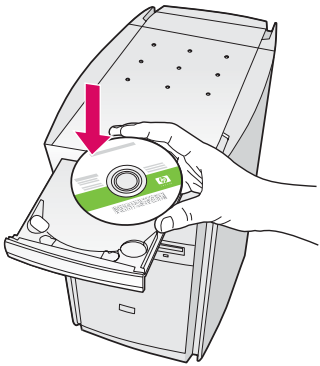
**For an Ethernet cable connection, go to Section B (page 9) for instructions.**

**Questions:** For information on how to set up a network, go to [www.hp.com/support](http://www.hp.com/support), enter **Photosmart 3200**, and search for **Network Setup**.



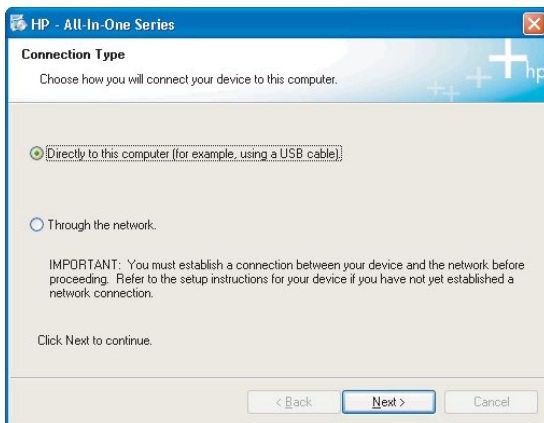
### A1 Insert the correct CD

#### Windows Users:



**Note:** If the startup screen does not appear after you insert the CD, double-click **My Computer**, double-click the **CD-ROM** icon, and then double-click **setup.exe**.

- Insert the HP All-in-One **Windows** CD.
- Follow the onscreen instructions to install the software.
- On the **Connection Type** screen, make sure to select **directly to this computer**. Continue to the next page.



#### Macintosh Users:



- Locate the HP All-in-One **Macintosh** CD.
- Continue to the next page.

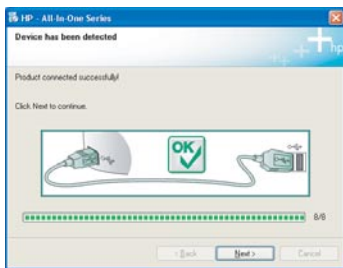
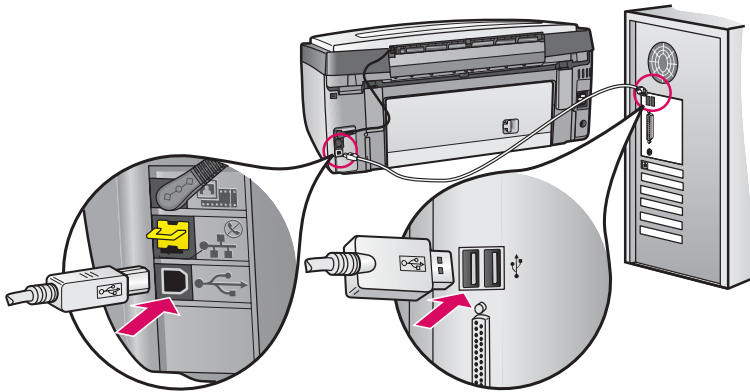
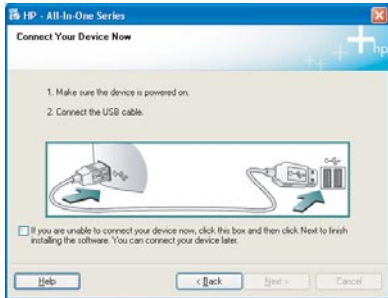


# Connect the USB cable

## Windows Users:

- a Follow the onscreen instructions until you see the prompt to connect the USB cable. (This may take several minutes.)

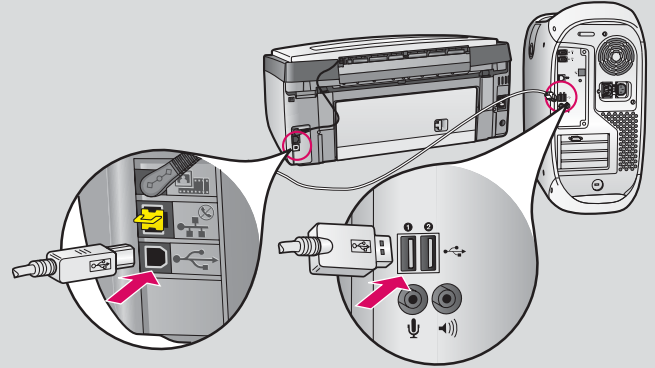
Once the prompt appears, connect the USB cable to the port on the back of the HP All-in-One, and then to **any USB port** on your computer.



- b Follow the onscreen instructions. Complete the **Sign up now** screen.

## Macintosh Users:

- a Connect the USB cable from your computer to the USB port on the back of the device.



- b Double-click the **HP All-in-One installer** icon.  
c Make sure you complete all screens, including the Setup Assistant.



# Go to back of the guide to make a test copy

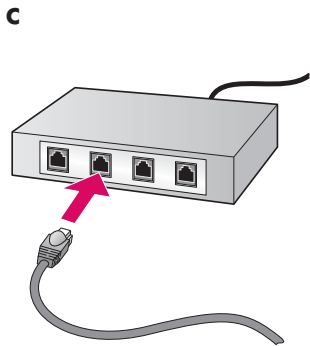
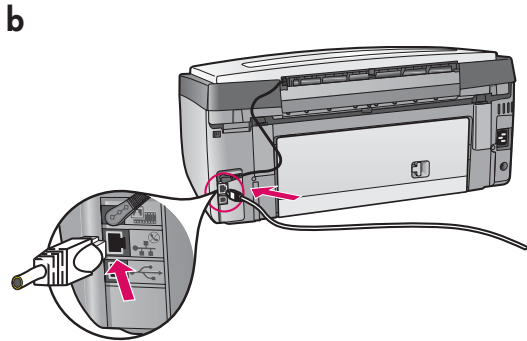
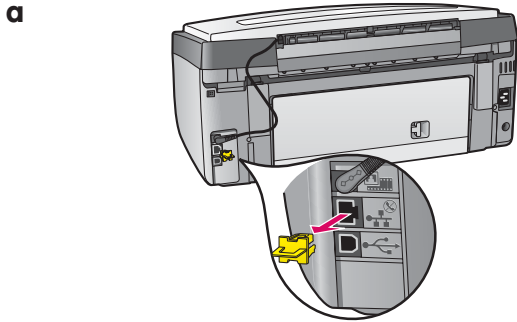




## Section B: Ethernet (wired) network

### B1

## Connect the Ethernet cable



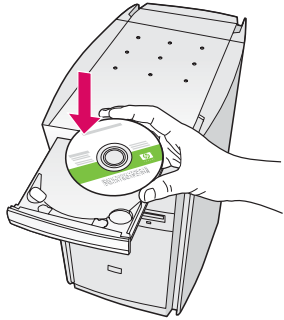
- a Remove the yellow plug from the back of the device.
- b Connect one end of the Ethernet cable to the Ethernet port on the back of the device.
- c Connect the other end of the Ethernet cable to the hub/router/switch. If the cable is not long enough, you can purchase a longer cable.

**Important:** Do not connect the Ethernet cable to a cable modem.

You must have a working network. If you already connected the USB cable, do not connect the Ethernet cable.

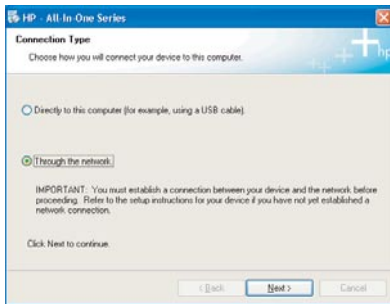
# Insert the correct CD

## Windows Users:



**Note:** If the startup screen does not appear after you insert the CD, double-click **My Computer**, double-click the **CD-ROM** icon, and then double-click **setup.exe**.

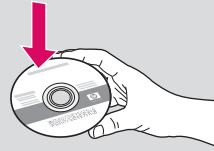
- Insert the HP All-in-One **Windows** CD.
- Follow the onscreen instructions to install the software.
- On the **Connection Type** screen, make sure to select **through the network**. Follow the onscreen instructions.



- You must choose **unblock** or **accept** on all firewall messages or setup will fail. Follow all onscreen instructions. Continue to the next page.

**Questions:** Anti-virus, Anti-Spyware, or firewall programs can block software installation. For details, go to [www.hp.com/support](http://www.hp.com/support), enter **Photosmart 3200**, and then search for **Firewalls**.

## Macintosh Users:



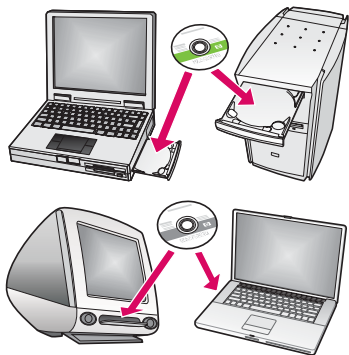
- Insert the HP All-in-One **Macintosh** CD.
- Double-click the **HP All-in-One installer** icon.



- Make sure you complete all screens, including the Setup Assistant. Continue to the next page.



## B3 Install software on additional computers

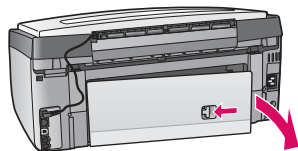


If you have additional computers on your network, install the HP All-in-One software on each computer. Choose the correct HP All-in-One CD for each installation.

Follow the onscreen instructions. Make sure that you choose the connection type between the network and your HP All-in-One (not between your computer and the network).

## B4 Go to back of the guide to make a test copy

# Troubleshooting



**Problem:** A **Paper Jam** message appears.

**Action:** Remove the back access door, and then gently pull out any paper. Turn the device off, and then on. Load the paper again.



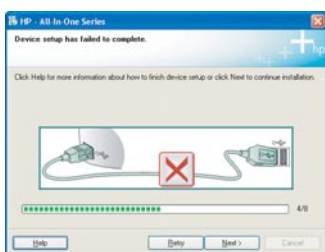
**Problem:** You did not see the screen prompting you to connect the USB cable.

**Action:** Remove, and then re-insert the HP All-in-One **Windows** CD. Refer to Section A.



**Problem:** The Microsoft **Add Hardware** screen appears.

**Action:** Click **Cancel**. Unplug the USB cable, and then insert the HP All-in-One **Windows** CD. Refer to Section A.



**Problem:** The **Device Setup Has Failed To Complete** screen appears.

**Action:** Verify that the control panel faceplate is firmly attached. Unplug the HP All-in-One and plug it in again. Check all connections. Make sure the USB cable is plugged into the computer. Do not plug the USB cable into a keyboard or non-powered hub. Refer to Section A.

# Make a test copy



Q5841-90316

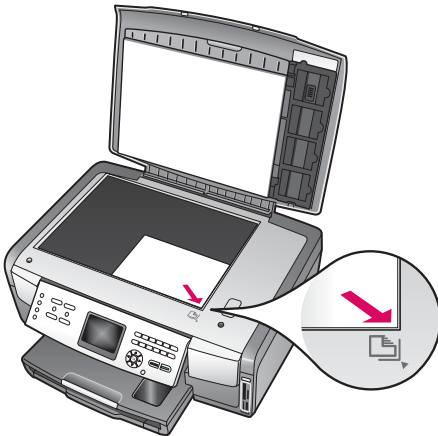
Now that you have finished setup, it is time to use your HP All-in-One. Make a copy of a favorite photo and see the new copy preview feature.

1



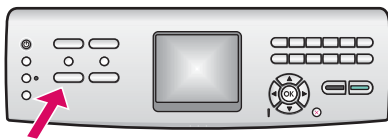
1 Find a 4 x 6 in (10 x 15 cm) photo.

2



2 Place the photo (face down) on the right front corner of the glass. Make sure the long edge of the photo is along the front of the glass. Close the lid.

3



3 Make sure you have the photo paper loaded in the paper tray (see page 2), and then press the **Copy** button.

**Copy**

4



4 Press the **Photo Tray** button. The device scans the photo, and then shows a preview on the color graphics display.

**Photo Tray**

5



5 Press the **Start Color** button.

**Start Color**

The HP All-in-One makes a copy of your original photo.



To learn about printing photos from memory cards and other features, see the User Guide and online help. For additional help, see [www.hp.com/support](http://www.hp.com/support).

